

Community and Economic Development Planning Division

Jamie Bax
Director

- 200 W. 4th Street
- Suite 3100
- Madera, CA 93637
- (559) 675-7821
- FAX (559) 675-6573
- TDD (559) 675-8970
- mc_planning@maderacounty.com

NOTICE OF INTENT TO ADOPT MITIGATED NEGATIVE DECLARATION 2026-04

This notice is to inform the public and interested agencies that in accordance with the California Environmental Quality Act (CEQA), the County of Madera is circulating Initial Study/Mitigated Negative Declaration (MND) 2026-04 for public comment.

Project/Location: The property is located on the northeast corner of Avenue 21 1/2 and Golden State Blvd (Road 19), (No Situs), Chowchilla.

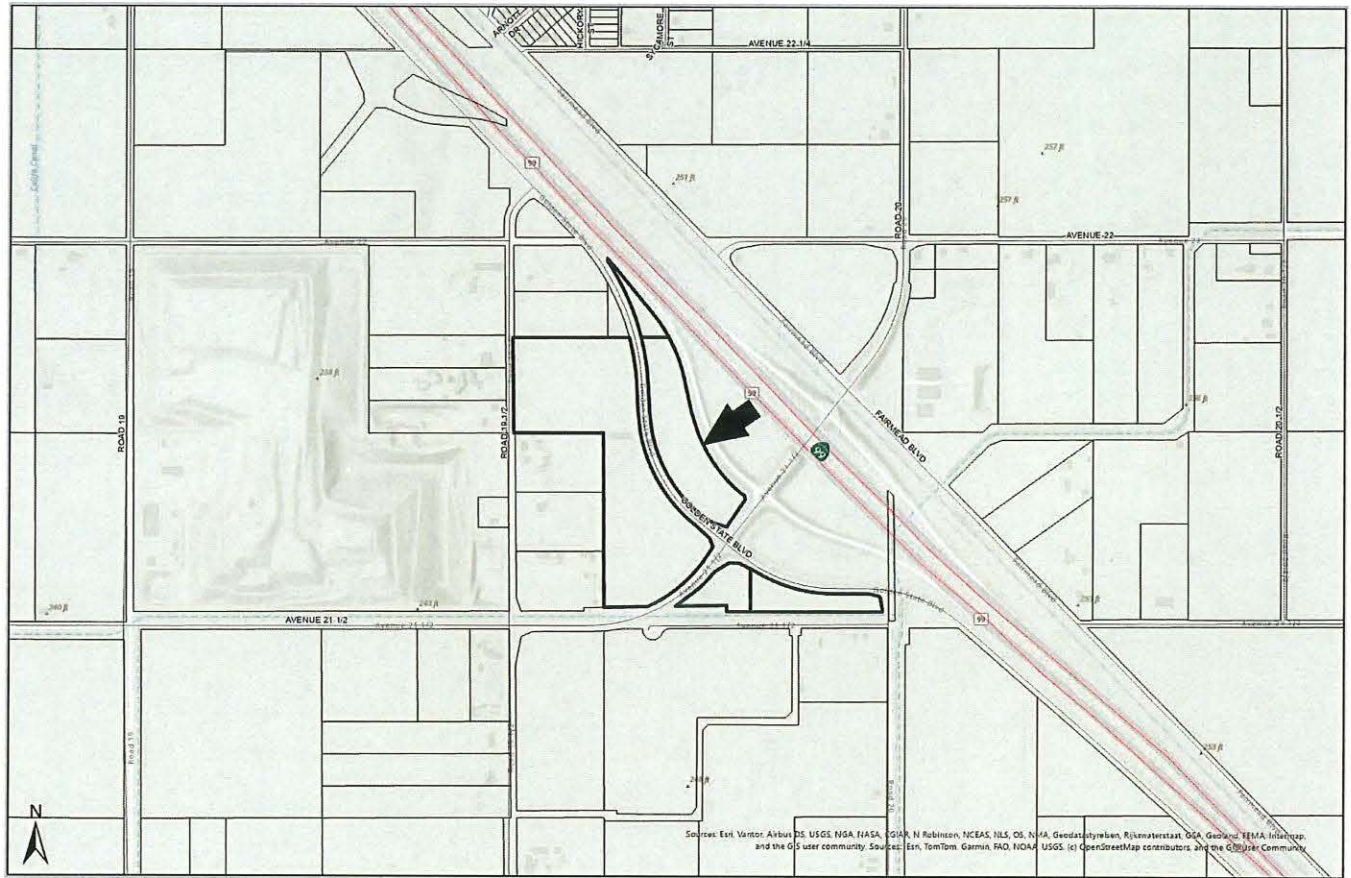
Project Description: The applicant is requesting a General Plan amendment from AR (Agriculture residential) to HSC (Highway Service Commercial) and Rezone from AR-5 (Agriculture Rural 5 Acre) District to CRG (Commercial Rural General) District to construct a truck stop complex. The truck stop complex will consist of truck parking, gas station, convenience store, fast food store, and a dog park.

Document Availability: The Initial Study/MND will be available for review at the following location beginning on Thursday May 14th, 2026:

- County of Madera Community & Economic Development Planning Division, 200 W 4th Street, Madera, CA 93637

Public Review Period: The 30-day public review period for the Initial Study/ND is from May 14, 2026, to June 12, 2026.

Comments: Any person who wishes to comment on the County's intent to adopt the ND must submit written comments no later than 5:00 p.m. on Friday June 12, 2026. Written comments may be sent to Jacob Aragon, Senior Planner, County of Madera Community & Economic Development Planning Division, 200 W 4th Street, Ste. 3100, Madera, CA 93637



Sources: Erik Varfor, Arkbu, US, USGS, NGA, NASA, CGIAR, N Robinson, NCEAS, NLS, OS, N/A, Geodatasystemen, Rijksoverheid, USA, Geonod, TEMMA, Intermap, and the GIS user community. Sources: Esri, TomTom, Garmin, FMO, NOAA, USGS, (c) OpenStreetMap contributors and the OpenStreetMap Community



Site Map