

APPENDIX A

FIGURES

- Figure 1. Site and Vicinity Map
 - Figure 2. Aerial Map
 - Figure 3. General Plan Land Use Designations
 - Figure 4. Zoning Designations
 - Figure 5. Important Farmlands Map
 - Figure 6. Soils Map
-

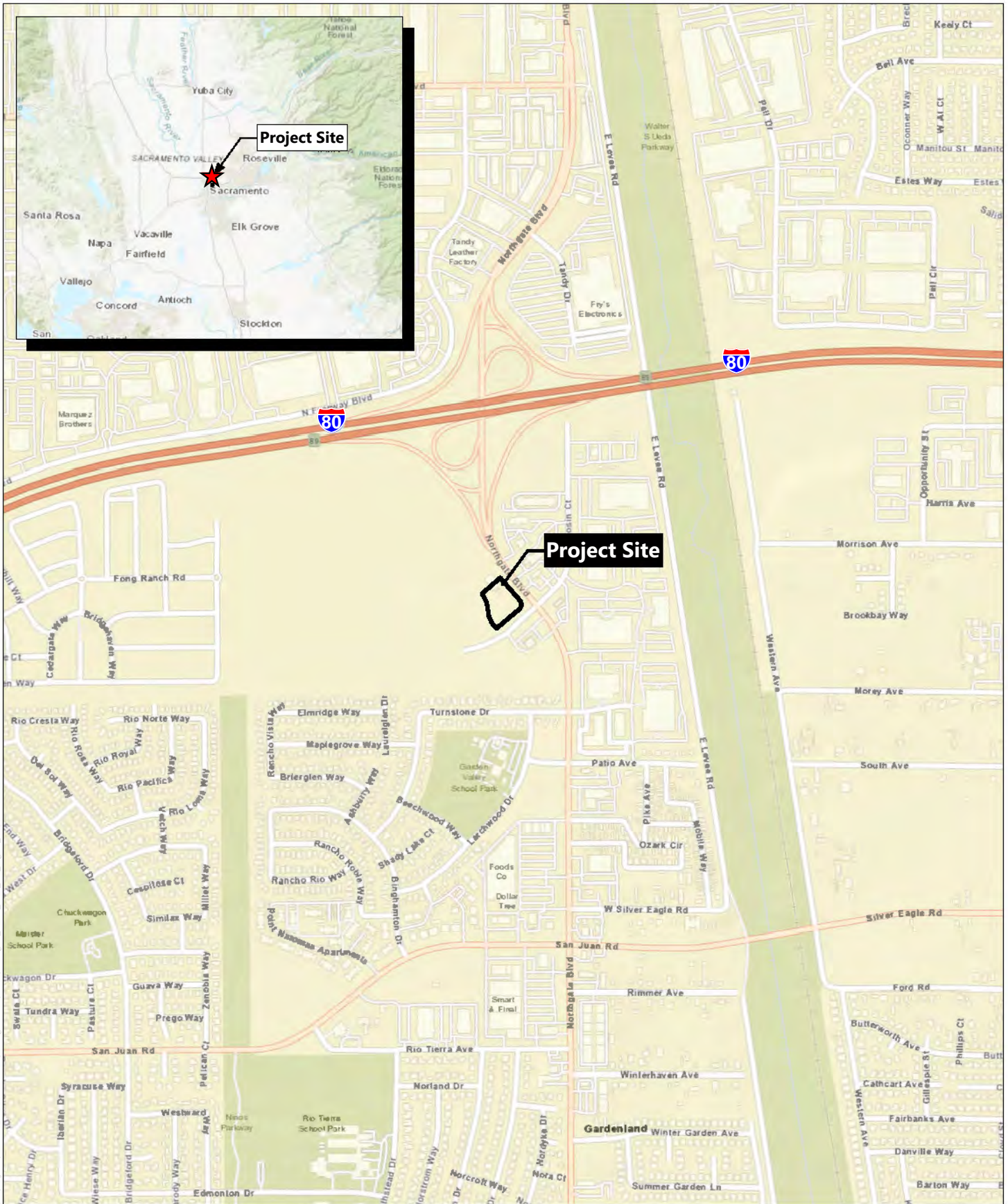
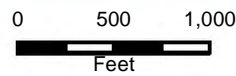


Figure 1 - Site & Vicinity

7-Eleven Convenience Store and Fuel Station,
 Northgate Boulevard and Rosin Court
 Sacramento, CA



**Point View
 Environmental**

Source: Base Map Layers (ESRI; 2025)



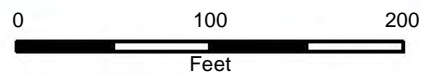
Figure 2 - Aerial Map

7-Eleven Convenience Store and Fuel Station,
Northgate Boulevard and Rosin Court

Sacramento, CA

**Point View
Environmental**

Aerial Source: Google Earth (11/2025)



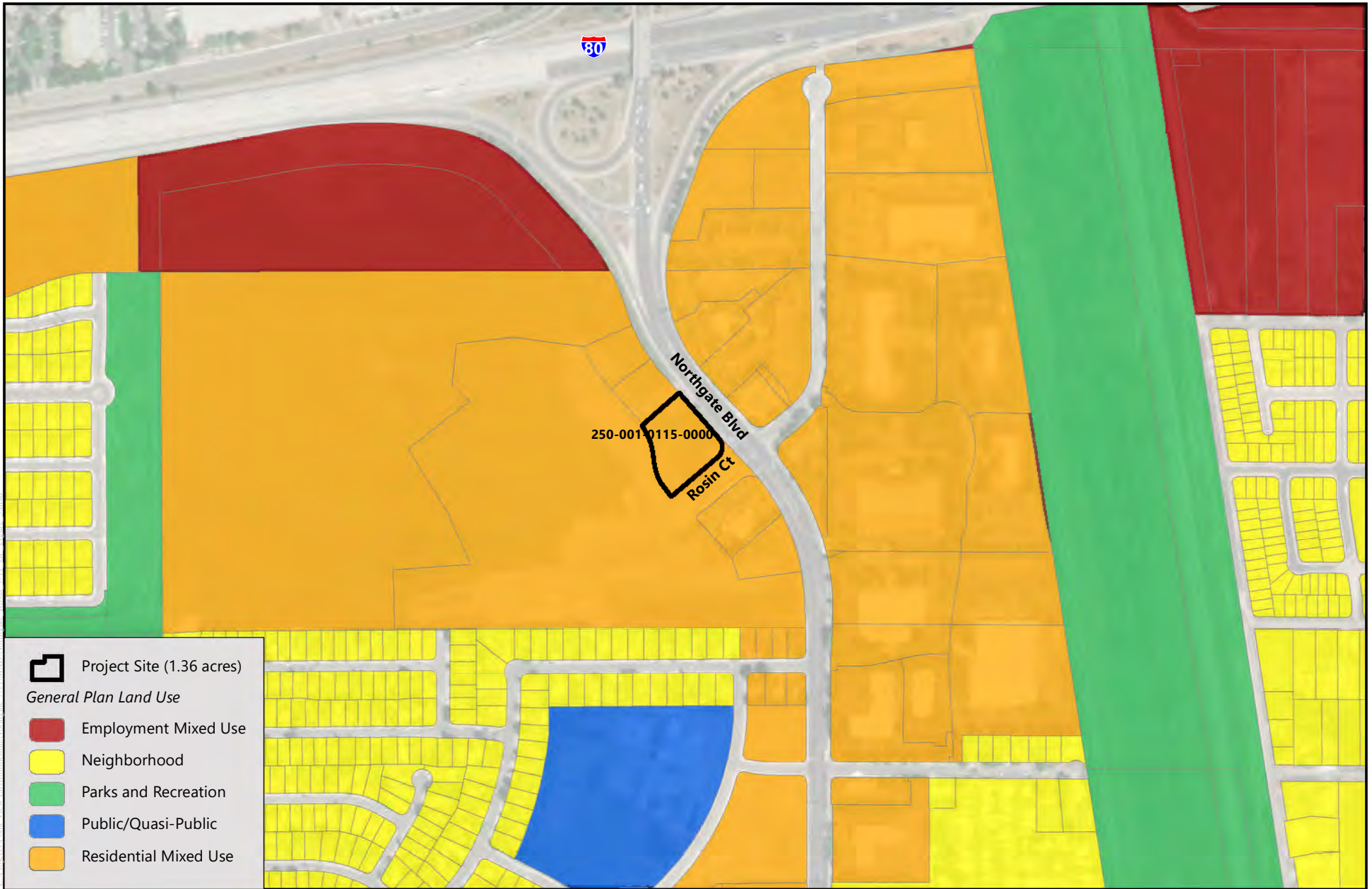
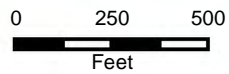


Figure 3 - General Plan Land Use Designations

7-Eleven Convenience Store and Fuel Station,
Northgate Boulevard and Rosin Court

Sacramento, CA

**Point View
Environmental**



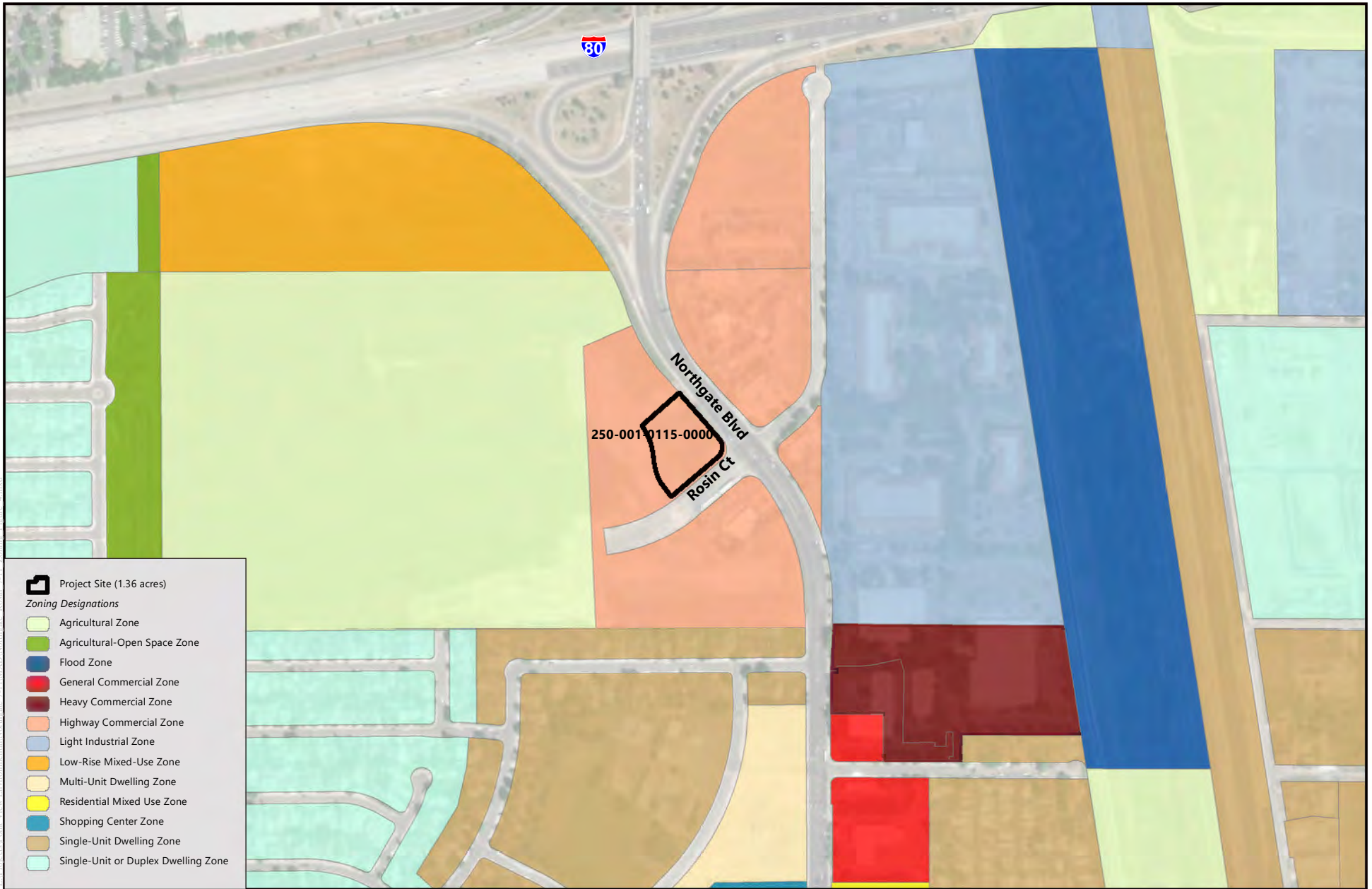
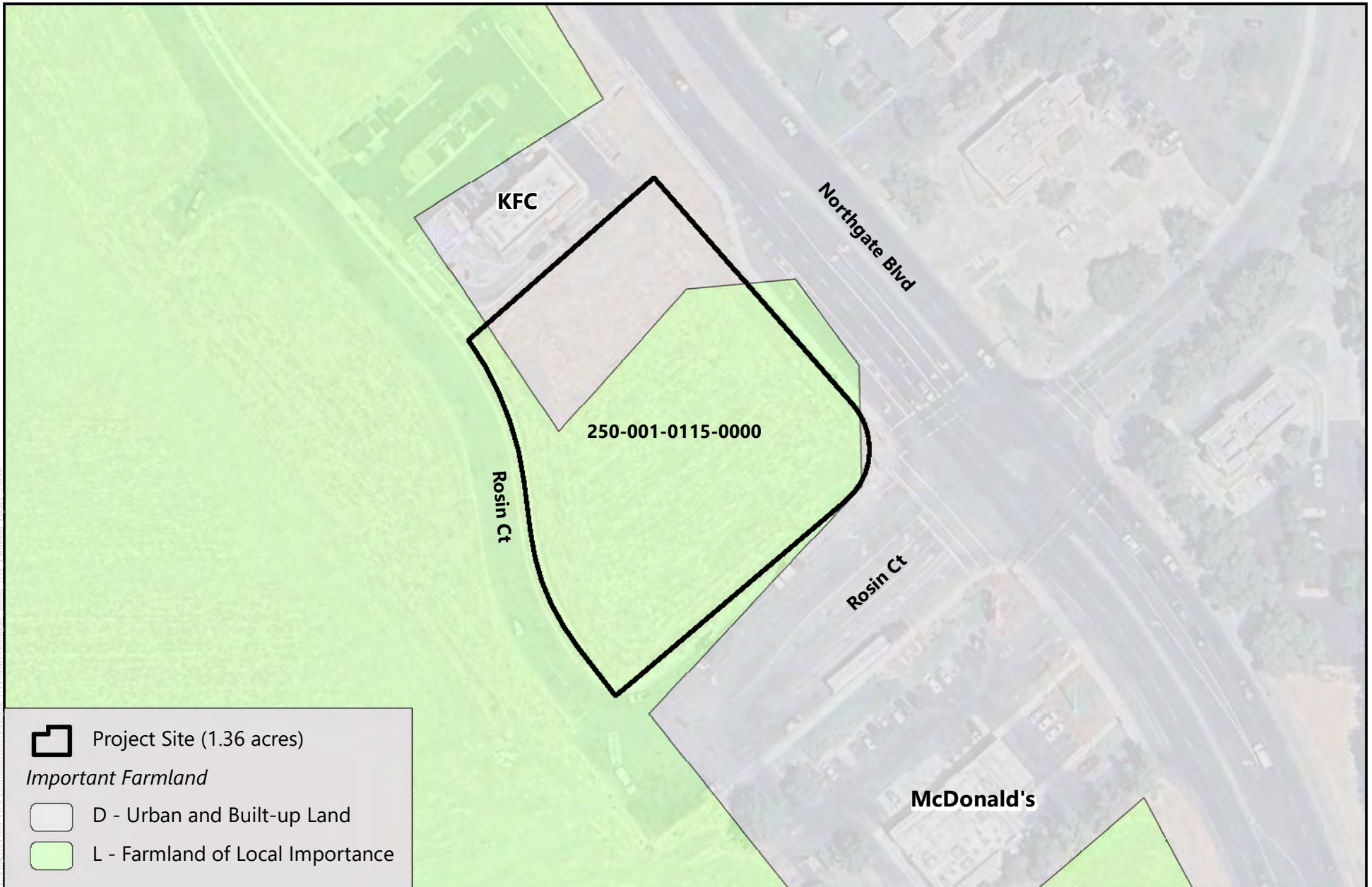





Figure 4 - Zoning Designations
 7-Eleven Convenience Store and Fuel Station,
 Northgate Boulevard and Rosin Court

Sacramento, CA

**Point View
 Environmental**

Aerial Source: Google Earth (11/2025); Data Source: City of Sacramento (2025)



 Project Site (1.36 acres)
Important Farmland
 D - Urban and Built-up Land
 L - Farmland of Local Importance

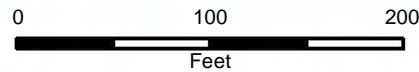


Figure 5 - Important Farmland

7-Eleven Convenience Store and Fuel Station,
Northgate Boulevard and Rosin Court

Sacramento, CA

Point View
Environmental

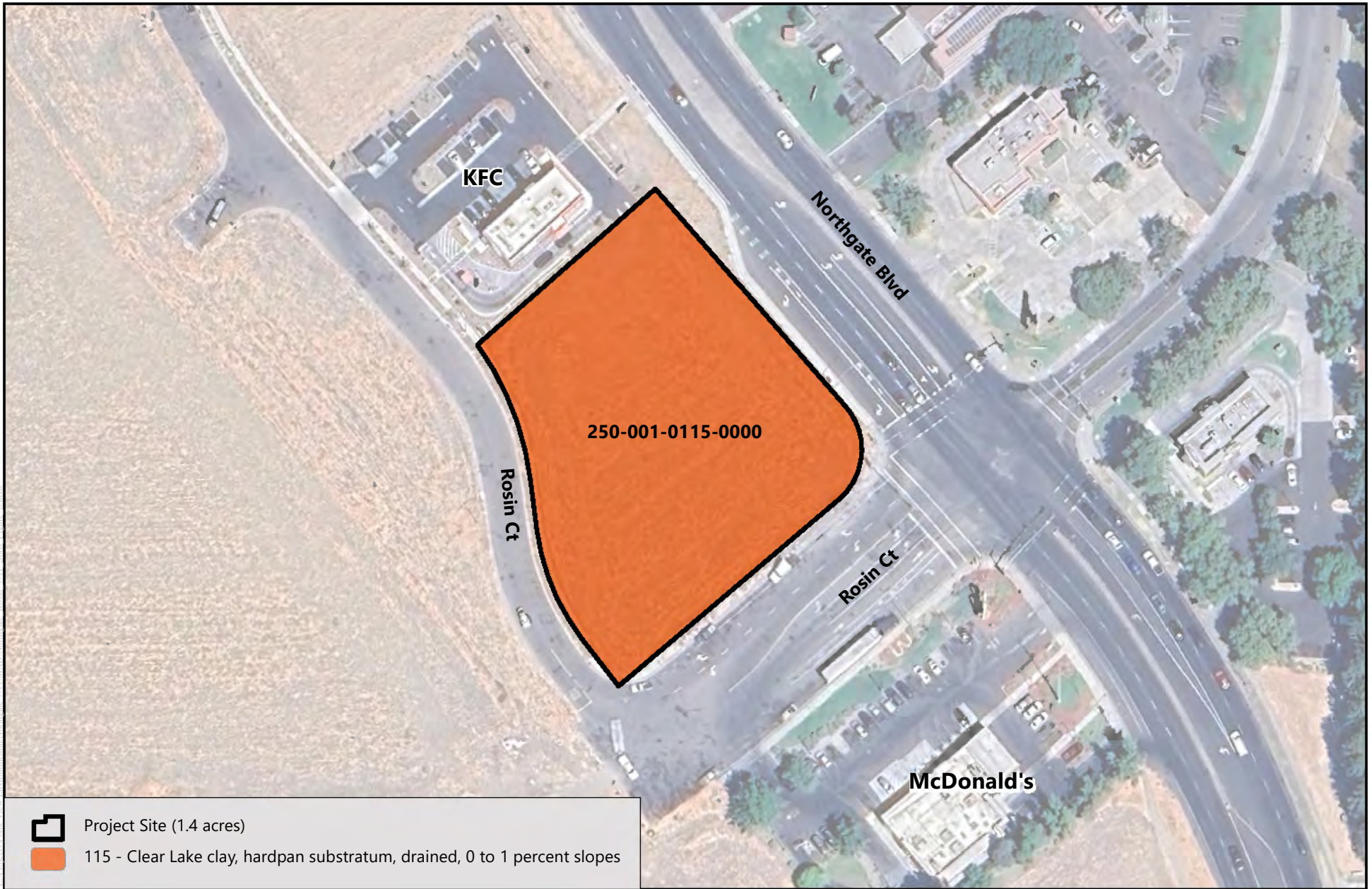


Figure 6 - Soils Map

7-Eleven Convenience Store and Fuel Station,
Northgate Boulevard and Rosin Court

Sacramento, CA

**Point View
Environmental**