

Exhibit B-2



February 6, 2025

Matt Bueno
PPI Engineering, Inc.
2800 Jefferson Street
Napa, CA 94558

RE: Application Completeness Determination – Wappo Hill Vineyard Conversion Agricultural Erosion Control Plan (ECPA) #P24-00213-ECPA APNs 039-040-050 & -054 (WRA Project #330091)

Mr. Bueno,

This letter addresses the requests from the Napa County regarding biological resources outlined in their letter *Application Completeness Determination – Wappo Hill Vineyard Conversion Agricultural Erosion Control Plan (ECPA) #P24-00213-ECPA APNs 039-040-050 & -054* dated September 16, 2024. Under #7 Biological Resources in the letter, Napa County outlined five additional items (a through e); the following addresses four of these five as follows.

(Napa County text in ***BOLD ITALICS***)

7. Biological Resource Information: Please provide an addendum or update to the Biological Resources Reconnaissance Survey prepared by WRA Inc., (May 2024) that includes:

a. An inventory of trees with a 6-inch diameter at breast height (DBH) or greater proposed to be removed that includes species and DBH. The inventory should also identify the locations of potential bat habitat trees and trees with high ecological value located within the project areas and describes the extent of potential bat habitat and trees with high ecological value within the overall holding.

On December 18, 2024 and January 16, 2025, WRA conducted a tree and bat maternity roost inventory throughout the proposed vineyard grading limits. Each tree over 6 inches in DBH within the proposed vineyard grading limits was typed to species, measures for DBH, and evaluated for unique habitat values (i.e., bat maternity roost). Table 1 summarizes the results of the tree inventory and all data are included in Attachment B.

Table 1. Tree Inventory Summary Results

SCIENTIFIC NAME	COMMON NAME	TOTAL	AVERAGE DBH (in.)	RANGE DBH (in.)
<i>Aesculus californica</i>	California Buckeye	1	30	30 – 30
<i>Eucalyptus globulus</i>	Blue Gum	2	40	40 – 48
<i>Juglans hindsii</i>	Black Walnut	2	21	7 – 22
<i>Quercus agrifolia</i>	Coast Live Oak	254	23	6 – 115
<i>Quercus douglasii</i>	Blue Oak	3	19	12 – 57
<i>Quercus kelloggii</i>	California Black Oak	24	21	7 – 77
<i>Quercus lobata</i>	Valley Oak	45	21	6 – 50
<i>Quercus suber</i>	Cork Oak	4	20	10 – 18
<i>Sequoia sempervirens</i>	Coast Redwood	3	17	12 – 25

Most of the trees scheduled for removal have no potential to support bats, including and particularly, maternity roosts. Most trees are small to medium diameter coast live oak (*Quercus agrifolia*), California black oak (*Quercus kelloggii*), and valley oak (*Quercus lobata*), which are healthy and do not provide suitable mass to maintain stable thermal conditions required by roosting bats nor do they contain substrates (e.g., exfoliating bark, hollows, fissures) in which bats can take cover.

However, there are 24 large trees, primarily coast live oaks (*Quercus agrifolia*) located within the proposed vineyard grading limits have the potential to support maternity roosts for bats. These trees have substantial holes, cavities, and/or fissures in the bark, trunks, and/or large branches sufficient to provide roosting substrate. Additionally, there are two large valley oaks (*Quercus lobata*) that are granary trees where woodpeckers have cached acorns. These trees should be removed and trimmed between August 31 and October 15. Bat habitat trees shall be removed or trimmed in a two-phased system conducted over two consecutive days. The first day (in the afternoon), limbs and branches will be removed by a tree cutter using chainsaws only. Limbs with cavities, crevices and deep bark fissures will be avoided, and only branches or limbs without those features will be removed. On the second day, the entire tree will be removed. All felled trees shall remain on the ground for at least 24 hours prior to disposal to allow any present bats within the trees to escape. Prior to overall construction of the vineyards, including tree removal, WRA biologists will clearly mark the habitat trees for construction personnel.

A targeted inventory of trees, including wildlife habitat trees, was not conducted outside of the proposed vineyard blocks; however, there are numerous trees with high ecological value outside of the blocks. These trees will continue to provide these valuable functions for local wildlife and will be preserved as part of the required canopy/woodland retention.

b. An assessment of the quality, in terms of biological/ecologic and foraging value, of the various Land Cover (or habitat types) occurring on the property and project area, in particular oak woodlands. Also confirm that mapped Land Covers are consistent with the Manual of California Vegetation (MCV2).

The developed areas provide very little habitat value for wildlife and native flora. Native wildlife accustomed to development and human disturbance (e.g., ground squirrel (*Otospermophilus beecheyi*), house finch (*Haemorhous mexicanus*)) may occur in and utilize the developed areas.

The non-native grasslands and coyote brush scrub provide foraging habitat for a variety of wildlife such as California quail (*Callipepla californica*), red-tailed hawk (*Buteo jamaicensis*), and black-tailed deer (*Odocoileus hemionus columbianus*). They are significantly invaded by numerous aggressive non-native herbaceous species including Italian thistle (*Carduus pycnocephalus*), distaff thistle (*Carthamus lanatus*), and black mustard (*Brassica nigra*). The Study Area's non-native grasslands and coyote brush scrub provide habitat values (e.g., foraging, cover, nesting, dispersal) on par with other like land covers throughout Napa County, and those on-site remainder grasslands/scrublands will continue to provide such habitat for local wildlife.

The Study Area's oak woodlands vary in quality throughout the site. Overall, they lack vertical heterogeneity with very little abundance and cover of native shrubs and saplings. Although not abundant, there is some regeneration on the edges and openings of the woodlands. Likewise, although not dense, the northern woodlands contain a higher degree of vertical heterogeneity. Those few shrubs that are present in the woodlands include poison oak (*Toxicodendron diversilobum*) and toyon (*Heteromeles arbutifolia*). The understories are dominated by non-native herbaceous species particularly false brome (*Brachypodium distachyon*), ripgut brome (*Bromus diandrus*), dogtail grass (*Cynosurus echinatus*), and hedge parsley (*Torilis arvensis*).

The age cohorts of the woodlands are fairly consistent throughout the subject property, with numerous large, old trees present within and outside of the proposed vineyard grading limits. The canopy provides cover, nesting, and foraging resources for a variety of woodland birds and small mammals, including several trees with substrate that may provide maternity roosting for bats and granary habitat for woodpeckers and squirrels (Attachment D). The woodlands within the proposed vineyard grading limits are not substantively different from those located outside of such and in all cases are contiguous with such. The remainder woodlands will continue to provide nesting, foraging, and cover resources for local wildlife, particularly birds and bats.

As noted below, the seasonal wetlands are dominated by non-native herbaceous species. Most of the wetlands do not support inundated waters sufficient to preclude vegetation and therefore, do not provide breeding habitat for amphibians. Several of the wetlands are man-made, particularly those wetlands situated in drainage ditches and construction-related depressions.

There are ten land covers in the Study Area mapped by WRA: developed, non-native grassland, coyote brush scrub, blue oak woodland, coast live oak woodland, valley oak woodland, seasonal wetland, and streams (ephemeral, intermittent, and perennial (Napa River)). All three oak woodlands, as well as the coyote brush scrub, are consistent with the

description and membership rules in the MCV2. Non-native grassland and seasonal wetland were not typed to the Alliance level (i.e., MCV2) because they are herbaceous systems with an in-situ mosaic of Alliances, and they are subject to a high degree of inter-annual variation. For instance, they may be dominated by wild oat (*Avena barbata*) in a drier year and soft chess (*Bromus hordeaceus*) or Italian rye grass (*Festuca perennis*) in the wetter year. Alliances were noted in the text of the report for both the non-native grasslands and seasonal wetlands.

c. An expanded discussion of the potential wetlands identified adjacent to Proposed Vineyard Blocks 3 and 5 that includes the history of these areas, the influence the reservoir outfall and two septic leach fields may have on these potential features, and any field data sheets and methodology used to classify the soils, vegetation, and hydrology in these areas that would support them meeting the definition of wetlands set forth in 33 CFR § 328.3 or the State of California definition of wetland as adopted by the Water Resources Control Board.

During the 2023 surveys, aquatic resources, including wetlands, were determined and mapped at an assessment level (i.e., evaluation of surficial characteristics) versus a formal delineation (i.e., formal data collection). I revisited the site on December 11 and 18, 2024 and January 16, 2025, to collect formal wetland information on standard U.S. Army Corps of Engineers Arid West datasheets (Attachment C).

The broad swale below the residences (Sample Point A-01) and the ditch downstream from the reservoir (Sample Point A-02) both meet all three wetland parameters of (1) hydrophytic vegetation, (2) hydric soils, and (3) wetland hydrology (see datasheets, Attachment C). These wetlands appear to be isolated (i.e., not connected to a Traditional Navigable Water (TNW)) and therefore would likely *not* be considered jurisdictional under the Clean Water Act based on the recent (2023) Sackett Decision. However, these features would be regulated by the Regional Water Quality Control Board (RWQCB) under the Porter-Cologne and State Water Policy. Therefore, alterations (e.g., fill, dredge) would require permitting with RWQCB.

The wetland summarized by Sample Point A-02 is situated within a man-made ditch intended to drain reservoir overflow. It is dominated by non-native herbaceous hydrophytes and provides very little habitat value above that of the surrounding grasslands. Therefore, a reduced setback to 10 feet would be appropriate and would not compromise the integrity of the ditch wetland with the application of standard erosion control measures developed and deployed by the project's civil engineers.

d. The dates of the surveys conducted in 2021 as indicated on page 20 of the report.

Survey dates are April 11, May 18, and June 13, 2023. The references to 2021 and 2024 in the last paragraph on Page 20 are in error.

e. Locations and type of raptor perches identified in the Supplemental Project Information and if these perches are existing or proposed.

INFORMATION INCLUDED ELSEWHERE BY PROJECT PROPONENT IN COORDINATION WITH
PPI ENGINEERING

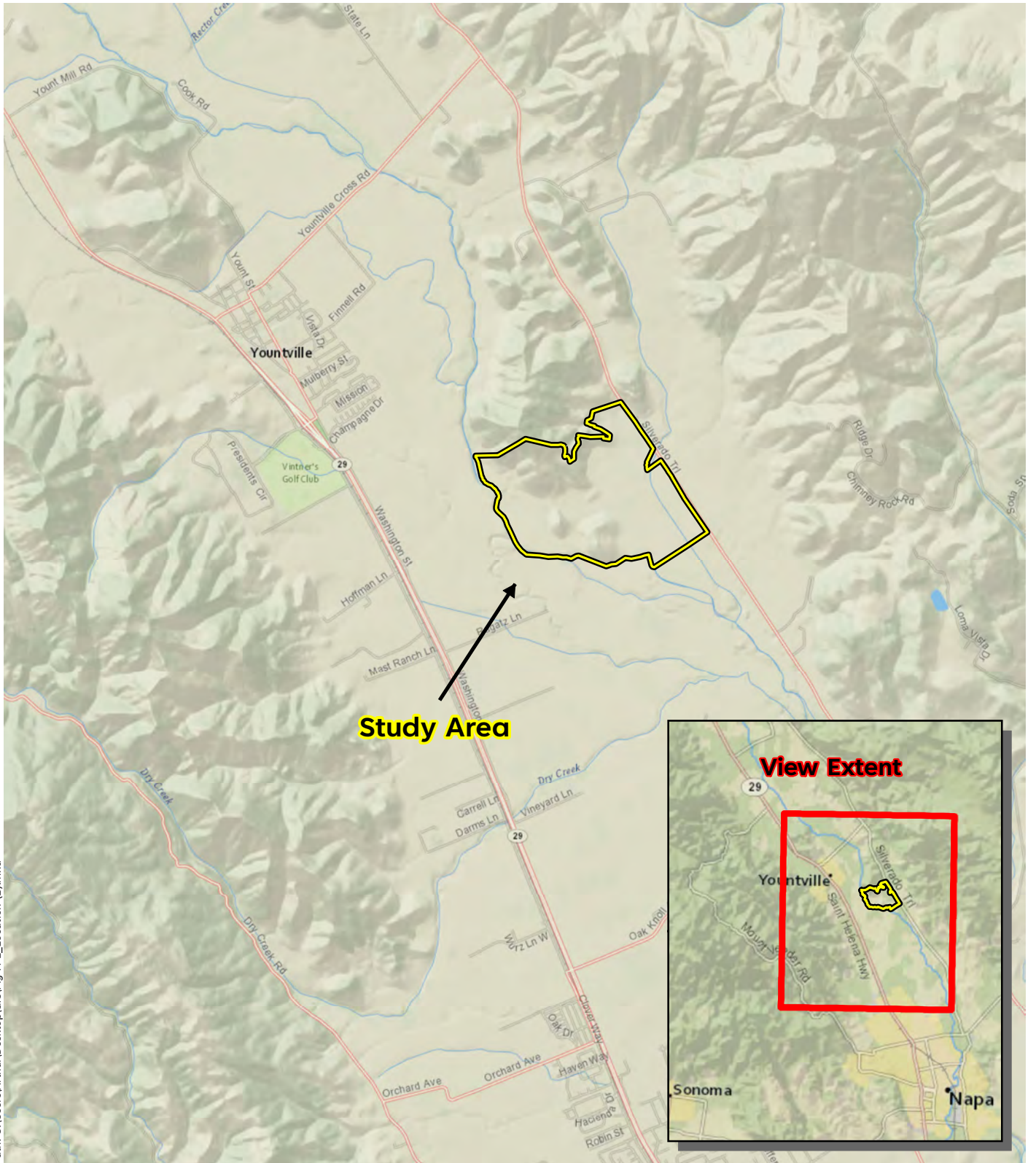
Please contact me if you have questions or require additional information. Sincerely,



Aaron Arthur
Associate Biologist
WRA, Inc.
arthur@wra-ca.com

ENCLOSURES: Attachment A: Figures
Attachment B: Tree Inventory
Attachment C: Wetland Datasheets
Attachment D: Representative Photographs
Attachment E: Observed Wildlife Species December 2024 and January 2025

ATTACMENT A – FIGURES

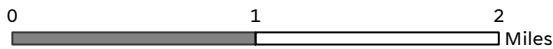


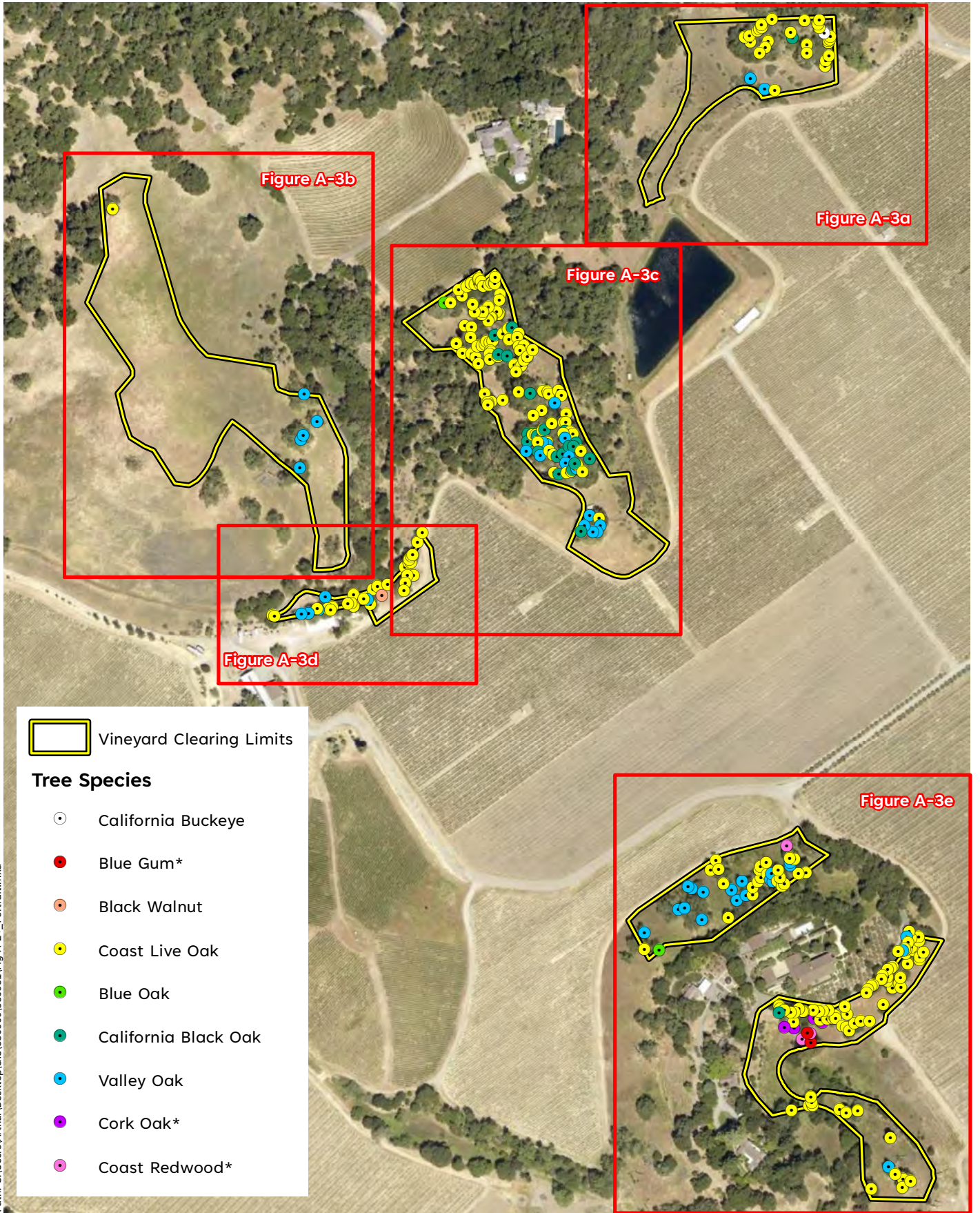
Path: C:\Users\Arthur\Desktop\GIS\Fig A-1_Location (1).mxd

Sources: National Geographic, WRA | Prepared By: Arthur, 3/25/2024

Figure A-1. Study Area Location

Constellation - Wappo Hill
Napa County, CA





Path: C:\Users\Arthur\Desktop\GIS\330000\330091\Fig A-2+_Portrait.mxd

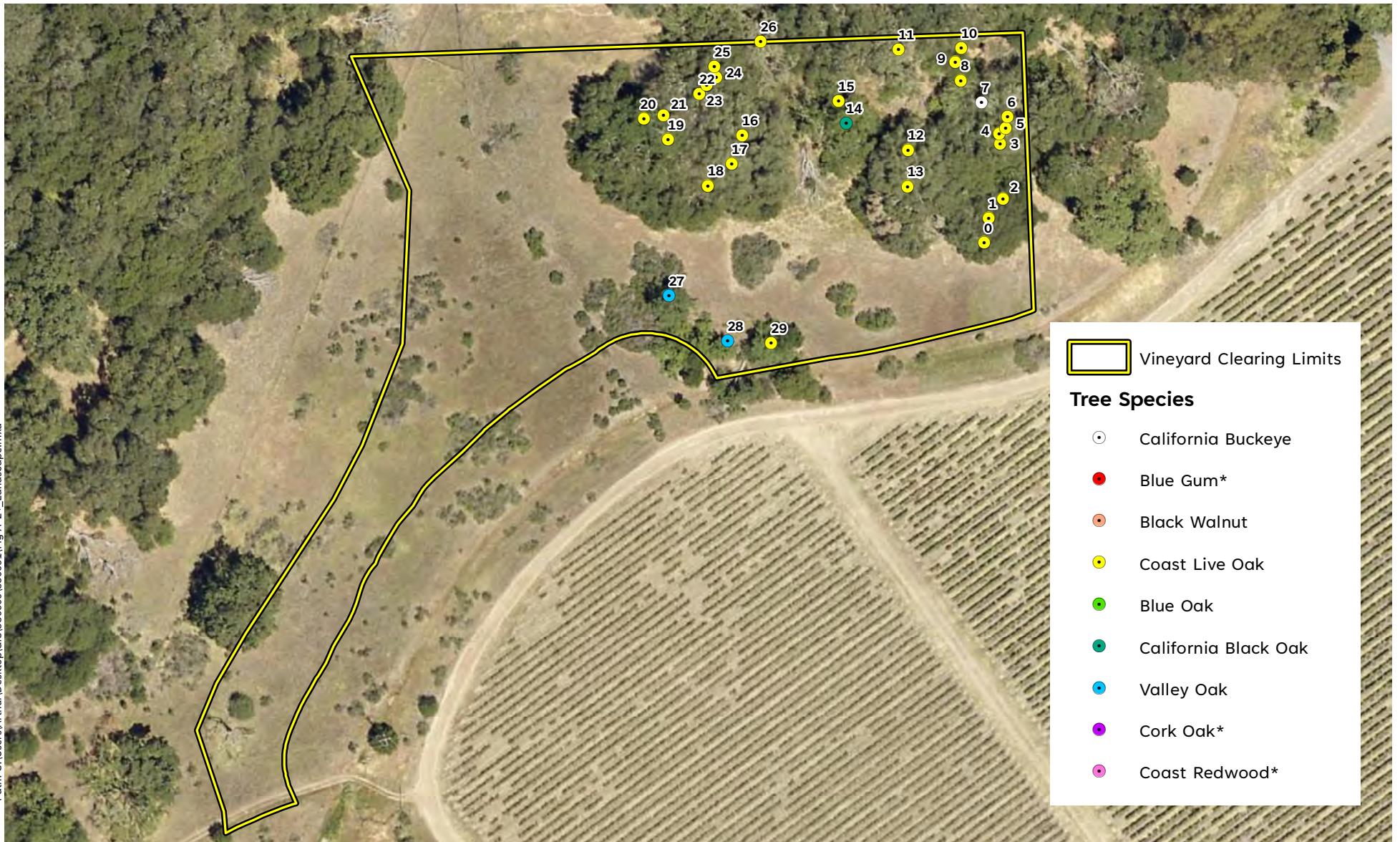
Sources: DigitalGlobe 2016 Aerial, WRA | Prepared By: Arthur, 11/12/2024

Figure A-2. Tree Inventory - Overview

*Not native to the Subject Property



Path: C:\Users\Arthur\Desktop\GIS\330000\3300091\Fig A-2+_Landscape.mxd

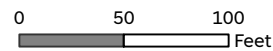


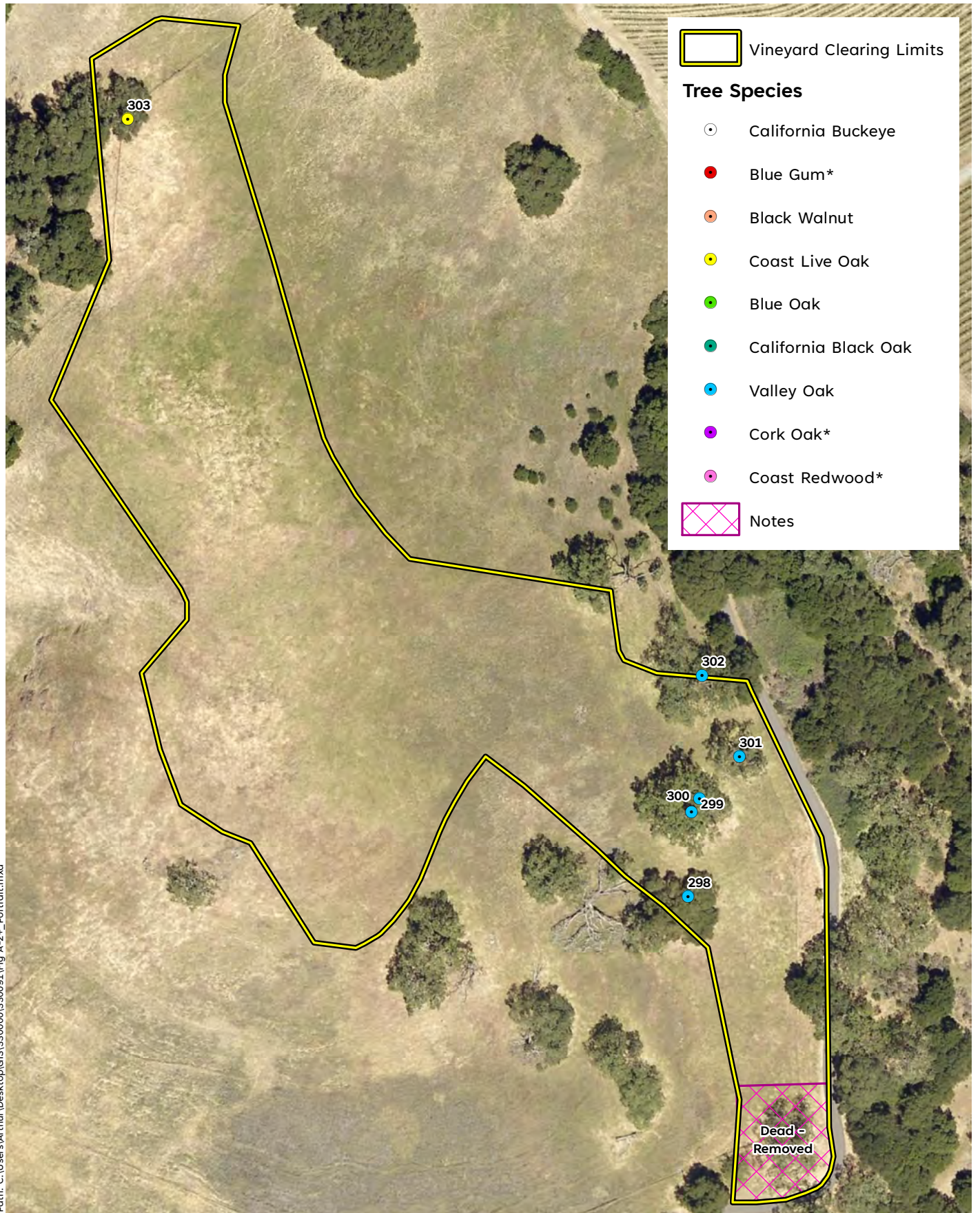
Sources: DigitalGlobe 2016 Aerial, WRA | Prepared By: Arthur, 1/2/2025

*Not native to the Subject Property

Figure A-3a. Tree Inventory - Close-up

Constellation Brands - Wappo Hill
Napa County, CA





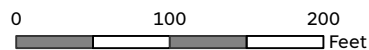
Path: C:\Users\Arthur\Desktop\GIS\330000\330091\Fig A-2+_Portrait.mxd

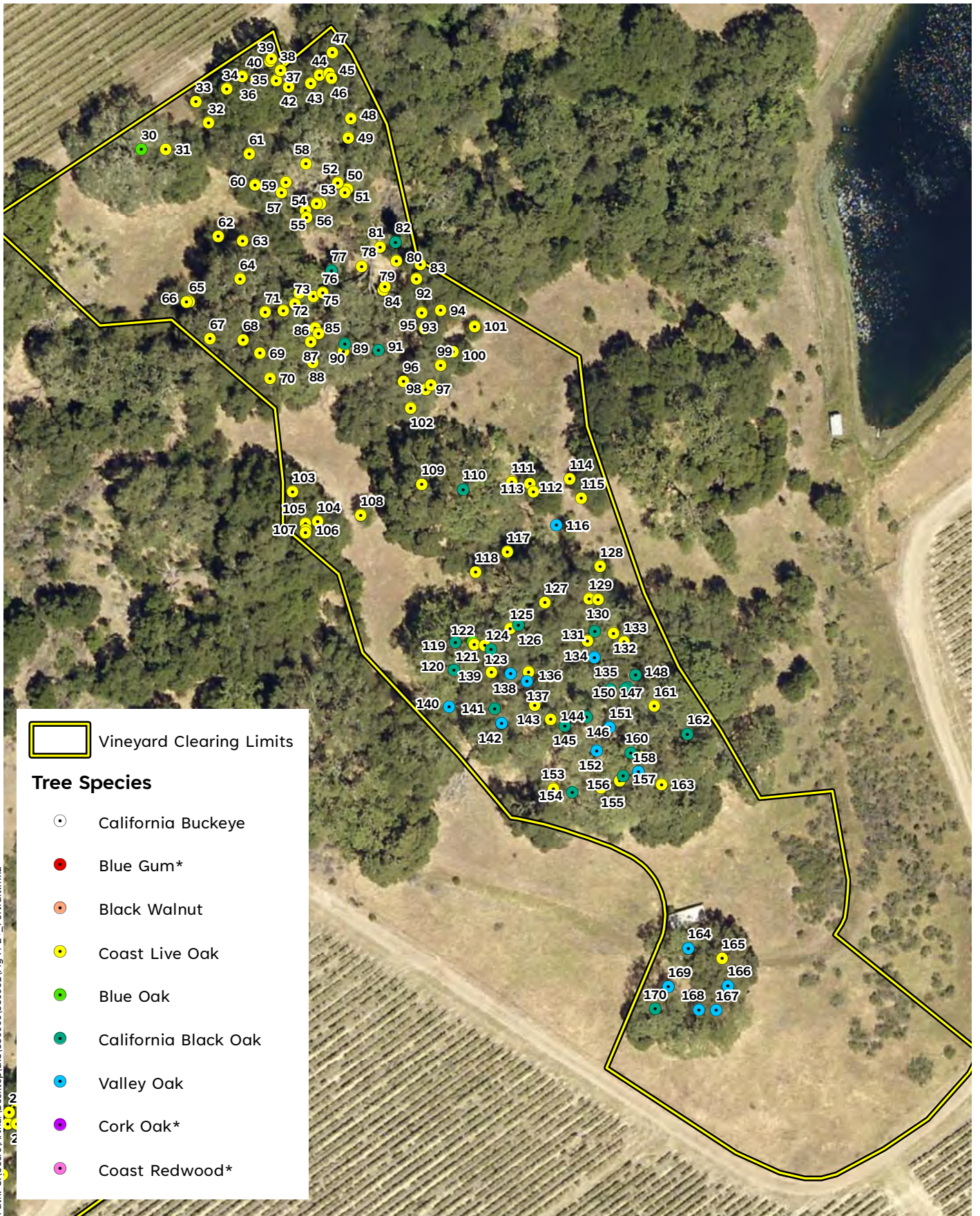
Sources: DigitalGlobe 2016 Aerial, WRA | Prepared By: Arthur, 11/12/2024

Figure A-3b. Tree Inventory - Close-up

*Not native to the Subject Property

Constellation - Wappo Hill
Napa County, CA





Sources: DigitalGlobe 2016 Aerial, WRA | Prepared By: Arthur, 11/12/2024

*Not native to the Subject Property

Figure A-3c. Tree Inventory - Close-up

Constellation - Wappo Hill
Napa County, CA



Path: C:\Users\Arthur\Desktop\GIS\330000\3300091\Fig A-2+_Landscape.mxd

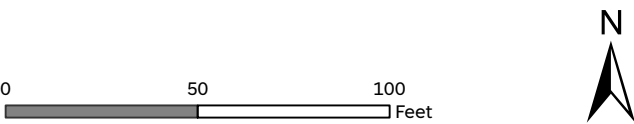


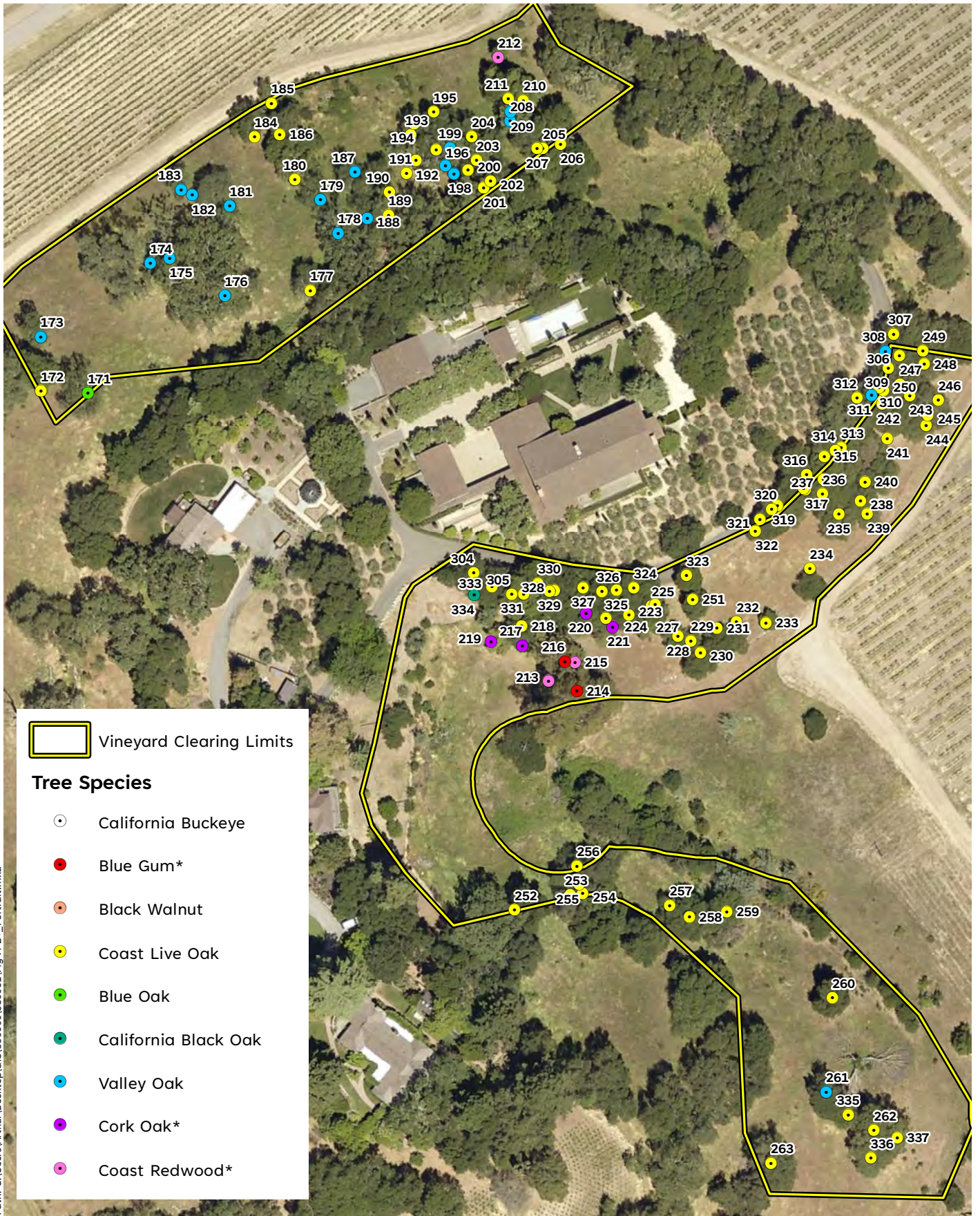
Sources: DigitalGlobe 2016 Aerial, WRA | Prepared By: Arthur, 1/2/2025

*Not native to the Subject Property

Figure A-3d. Tree Inventory - Close-up

Constellation Brands - Wappo Hill
Napa County, CA



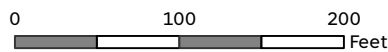


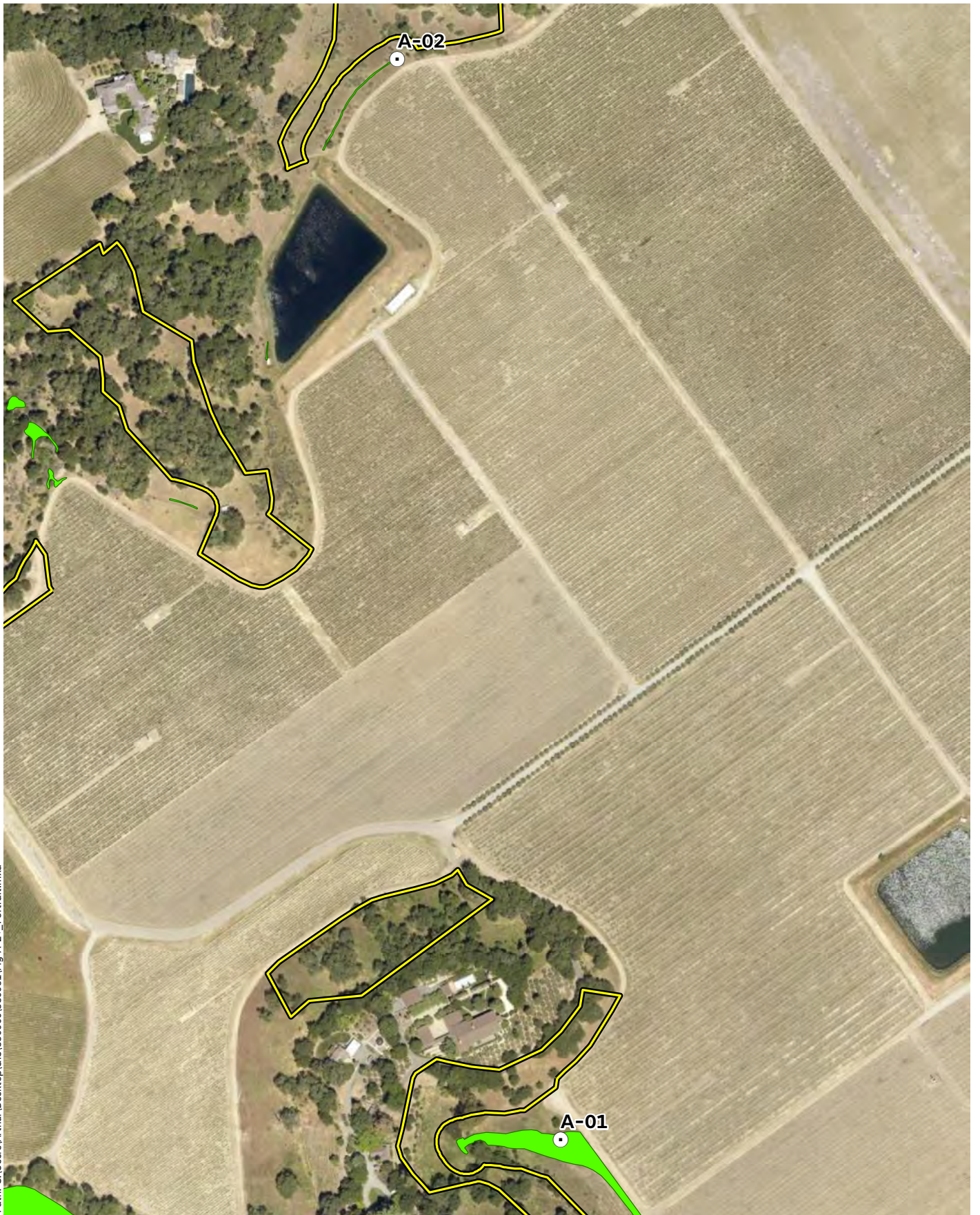
Sources: DigitalGlobe 2016 Aerial, WRA | Prepared By: Arthur, 11/12/2024

Figure A-3e. Tree Inventory - Close-up

*Not native to the Subject Property

Constellation - Wappo Hill
Napa County, CA





Path: C:\Users\Arthur\Desktop\GIS\330000\330091\Fig A-2+_Portrait.mxd

Sources: DigitalGlobe 2016 Aerial, WRA | Prepared By: Arthur, 1/17/2025

Figure A-4. Seasonal Wetlands & Sample Points

Constellation - Wappo Hill
Napa County, CA

0 100 200
Feet



ATTACHMENT B – TREE INVENTORY

Table B-1. Tree Inventory

TREE #	SCIENTIFIC NAME	COMMON NAME	DBH 1	DBH 2	DBH 3	DBH 4	DBH 5	DBH SUM	HABITAT NOTES
0	<i>Quercus agrifolia</i>	Coast Live Oak	13	--	--	--	--	13	
1	<i>Quercus agrifolia</i>	Coast Live Oak	20	25	15	--	--	60	
2	<i>Quercus agrifolia</i>	Coast Live Oak	12	9	--	--	--	20	
3	<i>Quercus agrifolia</i>	Coast Live Oak	16	--	--	--	--	16	
4	<i>Quercus agrifolia</i>	Coast Live Oak	12	14	--	--	--	26	
5	<i>Quercus agrifolia</i>	Coast Live Oak	24	26	--	--	--	50	
6	<i>Quercus agrifolia</i>	Coast Live Oak	15	7	--	--	--	21	
7	<i>Aesculus californica</i>	California Buckeye	14	16	--	--	--	30	
8	<i>Quercus agrifolia</i>	Coast Live Oak	9	--	--	--	--	9	
9	<i>Quercus agrifolia</i>	Coast Live Oak	9	--	--	--	--	9	
10	<i>Quercus agrifolia</i>	Coast Live Oak	9	--	--	--	--	9	
11	<i>Quercus agrifolia</i>	Coast Live Oak	42	--	--	--	--	42	Bat Maternity Roost
12	<i>Quercus agrifolia</i>	Coast Live Oak	13	25	25	--	--	62	
13	<i>Quercus agrifolia</i>	Coast Live Oak	10	18	24	--	--	52	Bat Maternity Roost
14	<i>Quercus kelloggii</i>	California Black Oak	45	--	--	--	--	45	
15	<i>Quercus agrifolia</i>	Coast Live Oak	10	--	--	--	--	10	
16	<i>Quercus agrifolia</i>	Coast Live Oak	40	30	20	20	0	110	Bat Maternity Roost
17	<i>Quercus agrifolia</i>	Coast Live Oak	50	--	--	--	--	50	
18	<i>Quercus agrifolia</i>	Coast Live Oak	23	13	--	--	--	35	
19	<i>Quercus agrifolia</i>	Coast Live Oak	40	33	--	--	--	73	Bat Maternity Roost
20	<i>Quercus agrifolia</i>	Coast Live Oak	40	--	--	--	--	40	Bat Maternity Roost
21	<i>Quercus agrifolia</i>	Coast Live Oak	22	--	--	--	--	22	
22	<i>Quercus agrifolia</i>	Coast Live Oak	12	--	--	--	--	12	
23	<i>Quercus agrifolia</i>	Coast Live Oak	11	19	11	15	19	75	
24	<i>Quercus agrifolia</i>	Coast Live Oak	7	13	--	--	--	20	
25	<i>Quercus agrifolia</i>	Coast Live Oak	12	10	38	--	--	60	
26	<i>Quercus agrifolia</i>	Coast Live Oak	36	--	--	--	--	36	Bat Maternity Roost
27	<i>Quercus lobata</i>	Valley Oak	10	10	--	--	--	20	
28	<i>Quercus lobata</i>	Valley Oak	26	25	--	--	--	50	
29	<i>Quercus agrifolia</i>	Coast Live Oak	13	--	--	--	--	13	
30	<i>Quercus douglasii</i>	Blue Oak	57	--	--	--	--	57	
31	<i>Quercus agrifolia</i>	Coast Live Oak	29	--	--	--	--	29	
32	<i>Quercus agrifolia</i>	Coast Live Oak	7	--	--	--	--	7	

TREE #	SCIENTIFIC NAME	COMMON NAME	DBH 1	DBH 2	DBH 3	DBH 4	DBH 5	DBH SUM	HABITAT NOTES
33	<i>Quercus agrifolia</i>	Coast Live Oak	7	--	--	--	--	7	
34	<i>Quercus agrifolia</i>	Coast Live Oak	10	--	--	--	--	10	
35	<i>Quercus agrifolia</i>	Coast Live Oak	14	--	--	--	--	14	
36	<i>Quercus agrifolia</i>	Coast Live Oak	11	--	--	--	--	11	
37	<i>Quercus agrifolia</i>	Coast Live Oak	8	--	--	--	--	8	
38	<i>Quercus agrifolia</i>	Coast Live Oak	12	--	--	--	--	12	
39	<i>Quercus agrifolia</i>	Coast Live Oak	13	--	--	--	--	13	
40	<i>Quercus agrifolia</i>	Coast Live Oak	13	--	--	--	--	13	
41	<i>Quercus agrifolia</i>	Coast Live Oak	12	--	--	--	--	12	
42	<i>Quercus agrifolia</i>	Coast Live Oak	9	--	--	--	--	9	
43	<i>Quercus agrifolia</i>	Coast Live Oak	9	--	--	--	--	9	
44	<i>Quercus agrifolia</i>	Coast Live Oak	15	--	--	--	--	15	
45	<i>Quercus agrifolia</i>	Coast Live Oak	13	--	--	--	--	13	
46	<i>Quercus agrifolia</i>	Coast Live Oak	10	--	--	--	--	10	
47	<i>Quercus agrifolia</i>	Coast Live Oak	7	--	--	--	--	7	
48	<i>Quercus agrifolia</i>	Coast Live Oak	45	--	--	--	--	45	Bat Maternity Roost
49	<i>Quercus agrifolia</i>	Coast Live Oak	14	24	21	--	--	59	
50	<i>Quercus agrifolia</i>	Coast Live Oak	10	--	--	--	--	10	
51	<i>Quercus agrifolia</i>	Coast Live Oak	8	--	--	--	--	8	
52	<i>Quercus agrifolia</i>	Coast Live Oak	12	--	--	--	--	12	
53	<i>Quercus agrifolia</i>	Coast Live Oak	8	--	--	--	--	8	
54	<i>Quercus agrifolia</i>	Coast Live Oak	7	--	--	--	--	7	
55	<i>Quercus agrifolia</i>	Coast Live Oak	7	--	--	--	--	7	
56	<i>Quercus agrifolia</i>	Coast Live Oak	7	--	--	--	--	7	
57	<i>Quercus agrifolia</i>	Coast Live Oak	18	--	--	--	--	18	
58	<i>Quercus agrifolia</i>	Coast Live Oak	15	--	--	--	--	15	
59	<i>Quercus agrifolia</i>	Coast Live Oak	7	6	--	--	--	13	
60	<i>Quercus agrifolia</i>	Coast Live Oak	9	6	12	--	--	26	
61	<i>Quercus agrifolia</i>	Coast Live Oak	45	--	--	--	--	45	Bat Maternity Roost
62	<i>Quercus agrifolia</i>	Coast Live Oak	9	--	--	--	--	9	
63	<i>Quercus agrifolia</i>	Coast Live Oak	7	--	--	--	--	7	
64	<i>Quercus agrifolia</i>	Coast Live Oak	43	--	--	--	--	43	Bat Maternity Roost
65	<i>Quercus agrifolia</i>	Coast Live Oak	7	--	--	--	--	7	
66	<i>Quercus agrifolia</i>	Coast Live Oak	6	--	--	--	--	6	

TREE #	SCIENTIFIC NAME	COMMON NAME	DBH 1	DBH 2	DBH 3	DBH 4	DBH 5	DBH SUM	HABITAT NOTES
67	<i>Quercus agrifolia</i>	Coast Live Oak	48	26	--	--	--	73	Bat Maternity Roost
68	<i>Quercus agrifolia</i>	Coast Live Oak	20	--	--	--	--	20	
69	<i>Quercus agrifolia</i>	Coast Live Oak	19	--	--	--	--	19	
70	<i>Quercus agrifolia</i>	Coast Live Oak	6	--	--	--	--	6	
71	<i>Quercus agrifolia</i>	Coast Live Oak	24	--	--	--	--	24	
72	<i>Quercus agrifolia</i>	Coast Live Oak	33	--	--	--	--	33	Bat Maternity Roost
73	<i>Quercus agrifolia</i>	Coast Live Oak	24	9	--	--	--	33	Bat Maternity Roost
74	<i>Quercus agrifolia</i>	Coast Live Oak	15	13	17	--	--	45	
75	<i>Quercus agrifolia</i>	Coast Live Oak	12	15	--	--	--	27	
76	<i>Quercus agrifolia</i>	Coast Live Oak	14	24	20	0	0	57	
77	<i>Quercus kelloggii</i>	California Black Oak	20	--	--	--	--	20	
78	<i>Quercus agrifolia</i>	Coast Live Oak	21	21	21	--	--	63	
79	<i>Quercus agrifolia</i>	Coast Live Oak	21	--	--	--	--	21	
80	<i>Quercus agrifolia</i>	Coast Live Oak	10	--	--	--	--	10	
81	<i>Quercus agrifolia</i>	Coast Live Oak	18	--	--	--	--	18	
82	<i>Quercus kelloggii</i>	California Black Oak	19	--	--	--	--	19	
83	<i>Quercus agrifolia</i>	Coast Live Oak	32	--	--	--	--	32	Bat Maternity Roost
84	<i>Quercus agrifolia</i>	Coast Live Oak	21	--	--	--	--	21	
85	<i>Quercus agrifolia</i>	Coast Live Oak	17	--	--	--	--	17	
86	<i>Quercus agrifolia</i>	Coast Live Oak	25	--	--	--	--	25	
87	<i>Quercus agrifolia</i>	Coast Live Oak	19	13	16	16	--	64	
88	<i>Quercus agrifolia</i>	Coast Live Oak	17	--	--	--	--	17	
89	<i>Quercus agrifolia</i>	Coast Live Oak	19	--	--	--	--	19	
90	<i>Quercus kelloggii</i>	California Black Oak	16	--	--	--	--	16	
91	<i>Quercus kelloggii</i>	California Black Oak	16	--	--	--	--	16	
92	<i>Quercus agrifolia</i>	Coast Live Oak	32	--	--	--	--	32	Bat Maternity Roost
93	<i>Quercus agrifolia</i>	Coast Live Oak	9	--	--	--	--	9	
94	<i>Quercus agrifolia</i>	Coast Live Oak	9	--	--	--	--	9	
95	<i>Quercus agrifolia</i>	Coast Live Oak	6	13	11	--	--	31	
96	<i>Quercus agrifolia</i>	Coast Live Oak	27	7	--	--	--	34	
97	<i>Quercus agrifolia</i>	Coast Live Oak	9	6	--	--	--	15	
98	<i>Quercus agrifolia</i>	Coast Live Oak	6	7	--	--	--	13	
99	<i>Quercus agrifolia</i>	Coast Live Oak	6	--	--	--	--	6	
100	<i>Quercus agrifolia</i>	Coast Live Oak	13	--	--	--	--	13	

TREE #	SCIENTIFIC NAME	COMMON NAME	DBH 1	DBH 2	DBH 3	DBH 4	DBH 5	DBH SUM	HABITAT NOTES
101	<i>Quercus agrifolia</i>	Coast Live Oak	5	4	4	0	0	13	
102	<i>Quercus agrifolia</i>	Coast Live Oak	7	--	--	--	--	7	
103	<i>Quercus agrifolia</i>	Coast Live Oak	14	19	--	--	--	33	
104	<i>Quercus agrifolia</i>	Coast Live Oak	15	--	--	--	--	15	
105	<i>Quercus agrifolia</i>	Coast Live Oak	12	--	--	--	--	12	
106	<i>Quercus agrifolia</i>	Coast Live Oak	14	13	9	15	--	51	
107	<i>Quercus agrifolia</i>	Coast Live Oak	16	--	--	--	--	16	
108	<i>Quercus agrifolia</i>	Coast Live Oak	7	7	--	--	--	14	
109	<i>Quercus agrifolia</i>	Coast Live Oak	9	21	51	34	--	115	Bat Maternity Roost
110	<i>Quercus kelloggii</i>	California Black Oak	17	13	17	30	--	77	
111	<i>Quercus agrifolia</i>	Coast Live Oak	8	7	--	--	--	14	
112	<i>Quercus agrifolia</i>	Coast Live Oak	7	11	--	--	--	18	
113	<i>Quercus agrifolia</i>	Coast Live Oak	7	10	10	--	--	27	
114	<i>Quercus agrifolia</i>	Coast Live Oak	9	8	8	6	--	31	
115	<i>Quercus agrifolia</i>	Coast Live Oak	9	7	--	--	--	16	
116	<i>Quercus lobata</i>	Valley Oak	6	--	--	--	--	6	
117	<i>Quercus agrifolia</i>	Coast Live Oak	7	--	--	--	--	7	
118	<i>Quercus agrifolia</i>	Coast Live Oak	9	--	--	--	--	9	
119	<i>Quercus kelloggii</i>	California Black Oak	16	34	--	--	--	49	
120	<i>Quercus kelloggii</i>	California Black Oak	13	15	--	--	--	28	
121	<i>Quercus douglasii</i>	Blue Oak	12	--	--	--	--	12	
122	<i>Quercus agrifolia</i>	Coast Live Oak	22	--	--	--	--	22	
123	<i>Quercus agrifolia</i>	Coast Live Oak	14	--	--	--	--	14	
124	<i>Quercus kelloggii</i>	California Black Oak	16	--	--	--	--	16	
125	<i>Quercus agrifolia</i>	Coast Live Oak	14	--	--	--	--	14	
126	<i>Quercus kelloggii</i>	California Black Oak	26	12	9	15	--	62	
127	<i>Quercus agrifolia</i>	Coast Live Oak	39	--	--	--	--	39	Bat Maternity Roost
128	<i>Quercus agrifolia</i>	Coast Live Oak	7	--	--	--	--	7	
129	<i>Quercus agrifolia</i>	Coast Live Oak	7	--	--	--	--	7	
130	<i>Quercus agrifolia</i>	Coast Live Oak	9	--	--	--	--	9	
131	<i>Quercus kelloggii</i>	California Black Oak	19	--	--	--	--	19	
132	<i>Quercus agrifolia</i>	Coast Live Oak	27	--	--	--	--	27	
133	<i>Quercus agrifolia</i>	Coast Live Oak	19	--	--	--	--	19	
134	<i>Quercus agrifolia</i>	Coast Live Oak	17	24	21	15	11	87	

TREE #	SCIENTIFIC NAME	COMMON NAME	DBH 1	DBH 2	DBH 3	DBH 4	DBH 5	DBH SUM	HABITAT NOTES
135	<i>Quercus lobata</i>	Valley Oak	17	--	--	--	--	17	
136	<i>Quercus agrifolia</i>	Coast Live Oak	18	--	--	--	--	18	
137	<i>Quercus lobata</i>	Valley Oak	19	--	--	--	--	19	
138	<i>Quercus lobata</i>	Valley Oak	16	--	--	--	--	16	
139	<i>Quercus agrifolia</i>	Coast Live Oak	20	18	17	11	19	84	
140	<i>Quercus lobata</i>	Valley Oak	11	23	--	--	--	33	
141	<i>Quercus kelloggii</i>	California Black Oak	26	--	--	--	--	26	
142	<i>Quercus lobata</i>	Valley Oak	14	12	--	--	--	26	
143	<i>Quercus agrifolia</i>	Coast Live Oak	14	12	--	--	--	26	
144	<i>Quercus agrifolia</i>	Coast Live Oak	18	13	14	--	--	45	
145	<i>Quercus kelloggii</i>	California Black Oak	20	--	--	--	--	20	
146	<i>Quercus kelloggii</i>	California Black Oak	14	--	--	--	--	14	
147	<i>Quercus kelloggii</i>	California Black Oak	14	11	--	--	--	25	
148	<i>Quercus kelloggii</i>	California Black Oak	7	--	--	--	--	7	
149	<i>Quercus kelloggii</i>	California Black Oak	18	18	--	--	--	37	
150	<i>Quercus kelloggii</i>	California Black Oak	13	--	--	--	--	13	
151	<i>Quercus lobata</i>	Valley Oak	17	17	--	--	--	34	
152	<i>Quercus lobata</i>	Valley Oak	14	13	15	--	--	41	
153	<i>Quercus agrifolia</i>	Coast Live Oak	32	--	--	--	--	32	Bat Maternity Roost
154	<i>Quercus kelloggii</i>	California Black Oak	32	--	--	--	--	32	
155	<i>Quercus agrifolia</i>	Coast Live Oak	32	--	--	--	--	32	Bat Maternity Roost
156	<i>Quercus agrifolia</i>	Coast Live Oak	9	--	--	--	--	9	
157	<i>Quercus kelloggii</i>	California Black Oak	22	--	--	--	--	22	
158	<i>Quercus lobata</i>	Valley Oak	9	24	--	--	--	33	
159	<i>Quercus agrifolia</i>	Coast Live Oak	18	16	23	32	--	88	
160	<i>Quercus kelloggii</i>	California Black Oak	11	--	--	--	--	11	
161	<i>Quercus agrifolia</i>	Coast Live Oak	25	--	--	--	--	25	
162	<i>Quercus kelloggii</i>	California Black Oak	24	--	--	--	--	24	
163	<i>Quercus agrifolia</i>	Coast Live Oak	34	--	--	--	--	34	Bat Maternity Roost
164	<i>Quercus lobata</i>	Valley Oak	22	--	--	--	--	22	
165	<i>Quercus agrifolia</i>	Coast Live Oak	28	--	--	--	--	28	
166	<i>Quercus lobata</i>	Valley Oak	22	--	--	--	--	22	
167	<i>Quercus lobata</i>	Valley Oak	21	--	--	--	--	21	
168	<i>Quercus lobata</i>	Valley Oak	25	--	--	--	--	25	

TREE #	SCIENTIFIC NAME	COMMON NAME	DBH 1	DBH 2	DBH 3	DBH 4	DBH 5	DBH SUM	HABITAT NOTES
169	<i>Quercus lobata</i>	Valley Oak	22	--	--	--	--	22	
170	<i>Quercus kelloggii</i>	California Black Oak	21	--	--	--	--	21	
171	<i>Quercus douglasii</i>	Blue Oak	23	--	--	--	--	23	
172	<i>Quercus agrifolia</i>	Coast Live Oak	20	--	--	--	--	20	
173	<i>Quercus lobata</i>	Valley Oak	14	--	--	--	--	14	
174	<i>Quercus lobata</i>	Valley Oak	37	--	--	--	--	37	
175	<i>Quercus lobata</i>	Valley Oak	36	--	--	--	--	36	
176	<i>Quercus lobata</i>	Valley Oak	46	--	--	--	--	46	Bat Maternity Roost
177	<i>Quercus agrifolia</i>	Coast Live Oak	12	12	--	--	--	24	
178	<i>Quercus lobata</i>	Valley Oak	8	9	--	--	--	17	
179	<i>Quercus lobata</i>	Valley Oak	13	--	--	--	--	13	
180	<i>Quercus agrifolia</i>	Coast Live Oak	18	14	12	--	--	44	
181	<i>Quercus lobata</i>	Valley Oak	17	--	--	--	--	17	
182	<i>Quercus lobata</i>	Valley Oak	10	--	--	--	--	10	
183	<i>Quercus lobata</i>	Valley Oak	12	--	--	--	--	12	
184	<i>Quercus agrifolia</i>	Coast Live Oak	23	--	--	--	--	23	
185	<i>Quercus agrifolia</i>	Coast Live Oak	13	--	--	--	--	13	
186	<i>Quercus agrifolia</i>	Coast Live Oak	15	--	--	--	--	15	
187	<i>Quercus lobata</i>	Valley Oak	15	10	--	--	--	25	
188	<i>Quercus lobata</i>	Valley Oak	13	--	--	--	--	13	
189	<i>Quercus agrifolia</i>	Coast Live Oak	15	--	--	--	--	15	
190	<i>Quercus agrifolia</i>	Coast Live Oak	12	10	--	--	--	22	
191	<i>Quercus agrifolia</i>	Coast Live Oak	17	--	--	--	--	17	
192	<i>Quercus agrifolia</i>	Coast Live Oak	17	--	--	--	--	17	
193	<i>Quercus agrifolia</i>	Coast Live Oak	12	--	--	--	--	12	
194	<i>Quercus agrifolia</i>	Coast Live Oak	10	--	--	--	--	10	
195	<i>Quercus agrifolia</i>	Coast Live Oak	8	--	--	--	--	8	
196	<i>Quercus agrifolia</i>	Coast Live Oak	18	--	--	--	--	18	
197	<i>Quercus lobata</i>	Valley Oak	11	--	--	--	--	11	
198	<i>Quercus lobata</i>	Valley Oak	8	--	--	--	--	8	
199	<i>Quercus lobata</i>	Valley Oak	9	--	--	--	--	9	
200	<i>Quercus agrifolia</i>	Coast Live Oak	7	--	--	--	--	7	
201	<i>Quercus agrifolia</i>	Coast Live Oak	10	--	--	--	--	10	
202	<i>Quercus agrifolia</i>	Coast Live Oak	12	--	--	--	--	12	

TREE #	SCIENTIFIC NAME	COMMON NAME	DBH 1	DBH 2	DBH 3	DBH 4	DBH 5	DBH SUM	HABITAT NOTES
203	<i>Quercus agrifolia</i>	Coast Live Oak	14	--	--	--	--	14	
204	<i>Quercus agrifolia</i>	Coast Live Oak	13	--	--	--	--	13	
205	<i>Quercus agrifolia</i>	Coast Live Oak	13	--	--	--	--	13	
206	<i>Quercus agrifolia</i>	Coast Live Oak	14	--	--	--	--	14	
207	<i>Quercus agrifolia</i>	Coast Live Oak	13	--	--	--	--	13	
208	<i>Quercus lobata</i>	Valley Oak	11	--	--	--	--	11	
209	<i>Quercus lobata</i>	Valley Oak	11	--	--	--	--	11	
210	<i>Quercus agrifolia</i>	Coast Live Oak	13	8	--	--	--	21	
211	<i>Quercus agrifolia</i>	Coast Live Oak	12	--	--	--	--	12	
212	<i>Sequoia sempervirens</i>	Coast Redwood	12	--	--	--	--	12	
213	<i>Sequoia sempervirens</i>	Coast Redwood	20	--	--	--	--	20	
214	<i>Eucalyptus globulus</i>	Blue Gum	48	--	--	--	--	48	Bat Maternity Roost
215	<i>Sequoia sempervirens</i>	Coast Redwood	25	--	--	--	--	25	
216	<i>Eucalyptus globulus</i>	Blue Gum	40	--	--	--	--	40	
217	<i>Quercus suber</i>	Cork Oak	18	--	--	--	--	18	
218	<i>Quercus agrifolia</i>	Coast Live Oak	14	12	--	--	--	26	
219	<i>Quercus suber</i>	Cork Oak	17	--	--	--	--	17	
220	<i>Quercus suber</i>	Cork Oak	15	--	--	--	--	15	
221	<i>Quercus suber</i>	Cork Oak	10	--	--	--	--	10	
222	<i>Quercus agrifolia</i>	Coast Live Oak	13	--	--	--	--	13	
223	<i>Quercus agrifolia</i>	Coast Live Oak	13	--	--	--	--	13	
224	<i>Quercus agrifolia</i>	Coast Live Oak	9	--	--	--	--	9	
225	<i>Quercus agrifolia</i>	Coast Live Oak	10	--	--	--	--	10	
226	<i>Quercus agrifolia</i>	Coast Live Oak	9	--	--	--	--	9	
227	<i>Quercus agrifolia</i>	Coast Live Oak	11	--	--	--	--	11	
228	<i>Quercus agrifolia</i>	Coast Live Oak	13	--	--	--	--	13	
229	<i>Quercus agrifolia</i>	Coast Live Oak	10	--	--	--	--	10	
230	<i>Quercus agrifolia</i>	Coast Live Oak	13	11	11	--	--	35	
231	<i>Quercus agrifolia</i>	Coast Live Oak	15	--	--	--	--	15	
232	<i>Quercus agrifolia</i>	Coast Live Oak	11	--	--	--	--	11	
233	<i>Quercus agrifolia</i>	Coast Live Oak	9	--	--	--	--	9	
234	<i>Quercus agrifolia</i>	Coast Live Oak	10	9	9	--	--	28	
235	<i>Quercus agrifolia</i>	Coast Live Oak	16	--	--	--	--	16	
236	<i>Quercus agrifolia</i>	Coast Live Oak	12	11	--	--	--	23	

TREE #	SCIENTIFIC NAME	COMMON NAME	DBH 1	DBH 2	DBH 3	DBH 4	DBH 5	DBH SUM	HABITAT NOTES
237	<i>Quercus agrifolia</i>	Coast Live Oak	13	--	--	--	--	13	
238	<i>Quercus agrifolia</i>	Coast Live Oak	11	8	7	--	--	26	
239	<i>Quercus agrifolia</i>	Coast Live Oak	10	9	--	--	--	19	
240	<i>Quercus agrifolia</i>	Coast Live Oak	16	14	--	--	--	30	
241	<i>Quercus agrifolia</i>	Coast Live Oak	14	--	--	--	--	14	
242	<i>Quercus agrifolia</i>	Coast Live Oak	15	--	--	--	--	15	
243	<i>Quercus agrifolia</i>	Coast Live Oak	10	8	--	--	--	18	
244	<i>Quercus agrifolia</i>	Coast Live Oak	13	11	--	--	--	24	
245	<i>Quercus agrifolia</i>	Coast Live Oak	13	--	--	--	--	13	
246	<i>Quercus agrifolia</i>	Coast Live Oak	11	8	6	--	--	25	
247	<i>Quercus agrifolia</i>	Coast Live Oak	12	--	--	--	--	12	
248	<i>Quercus agrifolia</i>	Coast Live Oak	18	--	--	--	--	18	
249	<i>Quercus agrifolia</i>	Coast Live Oak	11	9	--	--	--	20	
250	<i>Quercus agrifolia</i>	Coast Live Oak	15	--	--	--	--	15	
251	<i>Quercus agrifolia</i>	Coast Live Oak	13	--	--	--	--	13	
252	<i>Quercus agrifolia</i>	Coast Live Oak	21	--	--	--	--	21	
253	<i>Quercus agrifolia</i>	Coast Live Oak	11	--	--	--	--	11	
254	<i>Quercus agrifolia</i>	Coast Live Oak	14	--	--	--	--	14	
255	<i>Quercus agrifolia</i>	Coast Live Oak	14	9	--	--	--	23	
256	<i>Quercus agrifolia</i>	Coast Live Oak	19	--	--	--	--	19	
257	<i>Quercus agrifolia</i>	Coast Live Oak	30	--	--	--	--	30	
258	<i>Quercus agrifolia</i>	Coast Live Oak	19	--	--	--	--	19	
259	<i>Quercus agrifolia</i>	Coast Live Oak	19	--	--	--	--	19	
260	<i>Quercus agrifolia</i>	Coast Live Oak	18	--	--	--	--	18	
261	<i>Quercus lobata</i>	Valley Oak	20	--	--	--	--	20	
262	<i>Quercus agrifolia</i>	Coast Live Oak	0	15	--	--	--	15	
263	<i>Quercus agrifolia</i>	Coast Live Oak	30	--	--	--	--	30	
264	<i>Quercus agrifolia</i>	Coast Live Oak	15	--	--	--	--	15	
265	<i>Quercus agrifolia</i>	Coast Live Oak	9	8	--	--	--	17	
266	<i>Quercus lobata</i>	Valley Oak	7	6	--	--	--	13	
267	<i>Quercus agrifolia</i>	Coast Live Oak	19	--	--	--	--	19	
268	<i>Quercus agrifolia</i>	Coast Live Oak	28	--	--	--	--	28	
269	<i>Quercus agrifolia</i>	Coast Live Oak	14	--	--	--	--	14	
270	<i>Quercus agrifolia</i>	Coast Live Oak	24	--	--	--	--	24	

TREE #	SCIENTIFIC NAME	COMMON NAME	DBH 1	DBH 2	DBH 3	DBH 4	DBH 5	DBH SUM	HABITAT NOTES
271	<i>Quercus agrifolia</i>	Coast Live Oak	8	--	--	--	--	8	
272	<i>Quercus agrifolia</i>	Coast Live Oak	16	--	--	--	--	16	
273	<i>Quercus agrifolia</i>	Coast Live Oak	14	--	--	--	--	14	
274	<i>Quercus agrifolia</i>	Coast Live Oak	13	--	--	--	--	13	
275	<i>Quercus agrifolia</i>	Coast Live Oak	10	8	8	7	--	33	
276	<i>Quercus agrifolia</i>	Coast Live Oak	11	11	8	7	--	37	
277	<i>Quercus agrifolia</i>	Coast Live Oak	12	10	9	--	--	31	
278	<i>Quercus agrifolia</i>	Coast Live Oak	12	10	7	--	--	29	
279	<i>Quercus agrifolia</i>	Coast Live Oak	9	9	8	--	--	26	
280	<i>Quercus agrifolia</i>	Coast Live Oak	12	--	--	--	--	12	
281	<i>Quercus agrifolia</i>	Coast Live Oak	18	--	--	--	--	18	
282	<i>Quercus agrifolia</i>	Coast Live Oak	24	--	--	--	--	24	
283	<i>Quercus agrifolia</i>	Coast Live Oak	26	--	--	--	--	26	
284	<i>Juglans hindsii</i>	Black Walnut	22	--	--	--	--	22	
285	<i>Quercus lobata</i>	Valley Oak	10	--	--	--	--	10	
286	<i>Quercus agrifolia</i>	Coast Live Oak	21	11	--	--	--	32	
287	<i>Juglans hindsii</i>	Black Walnut	7	--	--	--	--	7	
288	<i>Quercus agrifolia</i>	Coast Live Oak	19	15	--	--	--	33	
289	<i>Quercus agrifolia</i>	Coast Live Oak	10	--	--	--	--	10	
290	<i>Quercus agrifolia</i>	Coast Live Oak	7	--	--	--	--	7	
291	<i>Quercus agrifolia</i>	Coast Live Oak	18	8	--	--	--	26	
292	<i>Quercus agrifolia</i>	Coast Live Oak	18	--	--	--	--	18	
293	<i>Quercus agrifolia</i>	Coast Live Oak	6	--	--	--	--	6	
294	<i>Quercus lobata</i>	Valley Oak	20	16	--	--	--	36	
295	<i>Quercus agrifolia</i>	Coast Live Oak	6	--	--	--	--	6	
296	<i>Quercus lobata</i>	Valley Oak	11	11	--	--	--	22	
297	<i>Quercus lobata</i>	Valley Oak	24	--	--	--	--	24	
298	<i>Quercus lobata</i>	Valley Oak	37	--	--	--	--	37	Bat Maternity Roost
299	<i>Quercus lobata</i>	Valley Oak	45	--	--	--	--	45	Granary
300	<i>Quercus lobata</i>	Valley Oak	23	--	--	--	--	23	
301	<i>Quercus lobata</i>	Valley Oak	35	--	--	--	--	35	Bat Maternity Roost
302	<i>Quercus lobata</i>	Valley Oak	40	--	--	--	--	40	
303	<i>Quercus agrifolia</i>	Coast Live Oak	60	--	--	--	--	60	Bat Maternity Roost
304	<i>Quercus agrifolia</i>	Coast Live Oak	17	--	--	--	--	17	

TREE #	SCIENTIFIC NAME	COMMON NAME	DBH 1	DBH 2	DBH 3	DBH 4	DBH 5	DBH SUM	HABITAT NOTES
305	<i>Quercus agrifolia</i>	Coast Live Oak	8	--	--	--	--	8	
306	<i>Quercus agrifolia</i>	Coast Live Oak	12	6	--	--	--	18	
307	<i>Quercus agrifolia</i>	Coast Live Oak	15	--	--	--	--	15	
308	<i>Quercus lobata</i>	Valley Oak	7	--	--	--	--	7	
309	<i>Quercus agrifolia</i>	Coast Live Oak	8	5	5	5	--	23	
310	<i>Quercus agrifolia</i>	Coast Live Oak	16	--	--	--	--	16	
311	<i>Quercus lobata</i>	Valley Oak	40	--	--	--	--	40	Granary
312	<i>Quercus agrifolia</i>	Coast Live Oak	7	--	--	--	--	7	
313	<i>Quercus agrifolia</i>	Coast Live Oak	8	6	--	--	--	14	
314	<i>Quercus agrifolia</i>	Coast Live Oak	13	--	--	--	--	13	
315	<i>Quercus agrifolia</i>	Coast Live Oak	10	8	7	--	--	25	
316	<i>Quercus agrifolia</i>	Coast Live Oak	9	--	--	--	--	9	
317	<i>Quercus agrifolia</i>	Coast Live Oak	15	--	--	--	--	15	
318	<i>Quercus agrifolia</i>	Coast Live Oak	11	--	--	--	--	11	
319	<i>Quercus agrifolia</i>	Coast Live Oak	11	9	--	--	--	20	
320	<i>Quercus agrifolia</i>	Coast Live Oak	9	9	8	--	--	26	
321	<i>Quercus agrifolia</i>	Coast Live Oak	10	--	--	--	--	10	
322	<i>Quercus agrifolia</i>	Coast Live Oak	7	6	--	--	--	13	
323	<i>Quercus agrifolia</i>	Coast Live Oak	10	6	5	--	--	21	
324	<i>Quercus agrifolia</i>	Coast Live Oak	14	12	11	8	--	45	
325	<i>Quercus agrifolia</i>	Coast Live Oak	12	--	--	--	--	12	
326	<i>Quercus agrifolia</i>	Coast Live Oak	12	11	--	--	--	23	
327	<i>Quercus agrifolia</i>	Coast Live Oak	21	--	--	--	--	21	
328	<i>Quercus agrifolia</i>	Coast Live Oak	10	8	7	--	--	25	
329	<i>Quercus agrifolia</i>	Coast Live Oak	14	8	--	--	--	22	
330	<i>Quercus agrifolia</i>	Coast Live Oak	21	--	--	--	--	21	
331	<i>Quercus agrifolia</i>	Coast Live Oak	22	12	--	--	--	34	
332	<i>Quercus agrifolia</i>	Coast Live Oak	8	--	--	--	--	8	
333	<i>Quercus agrifolia</i>	Coast Live Oak	17	8	--	--	--	25	
334	<i>Quercus kelloggii</i>	California Black Oak	12	--	--	--	--	12	
335	<i>Quercus agrifolia</i>	Coast Live Oak	14	--	--	--	--	14	
336	<i>Quercus agrifolia</i>	Coast Live Oak	20	--	--	--	--	20	
337	<i>Quercus agrifolia</i>	Coast Live Oak	17	--	--	--	--	17	

ATTACHMENT C – ARID WEST DATASHEETS

Wetland Determination Data Form - Arid West Region

Project/Site Wappo Hill City unincorporated County Napa Sampling Date 12/11/2024
 Applicant/Owner Constellation Brands State CA Sampling Point A-01
 Investigator(s) Aaron Arthur Section, Township, Range N/A
 Landform (hillslope, terrace, etc) hillslope Local Relief (concave, convex, none) broadly linear concave Slope(%) 3-5
 Subregion(LRR) LRR C (Medit. CA) Lat: 38.3885 Long: -122.3277 Datum: WGS 84
 Soil Map Unit Name Forward silt loam, 5-39% slopes NWI classification N/A

Are climatic/hydrologic conditions on-site typical for this time of year? Yes No (If no, explain in remarks:
 Are any of the following significantly disturbed? Vegetation Soil Hydrology Are "Normal Circumstances" present? Yes No
 Are any of the following naturally problematic? Vegetation Soil Hydrology (If needed, explain any answers in remarks)

SUMMARY OF FINDINGS - Attach site map showing sample point locations, transects, important features, etc.

Hydrophytic Vegetation Present? <input checked="" type="checkbox"/> Yes <input type="checkbox"/> No Hydric Soil Present? <input checked="" type="checkbox"/> Yes <input type="checkbox"/> No Wetland Hydrology Present? <input checked="" type="checkbox"/> Yes <input type="checkbox"/> No	Is the Sampled Area within a Wetland? <input checked="" type="checkbox"/> Yes <input type="checkbox"/> No
Remarks: Sample point situated in a broad hillside swale with a seep at the head. All three wetland parameters present.	

VEGETATION (use scientific names)

TREE STRATUM	Plot Size:	Absolute % cover	Dominant Species?	Indicator Status	
1. _____	<u>N/A</u>	_____	_____	_____	Dominance Test Worksheet Number of Dominant Species that are OBL, FACW, or FAC? <u>2</u> (A) Total number of dominant species across all strata? <u>2</u> (B) % of dominant species that are OBL, FACW, or FAC? <u>100</u> (A/B)
2. _____		_____	_____	_____	
3. _____		_____	_____	_____	
4. _____		_____	_____	_____	
Tree Stratum Total Cover: _____					
SAPLING/SHRUB STRATUM	Plot Size:	Absolute % cover	Dominant Species?	Indicator Status	
1. _____	<u>N/A</u>	_____	_____	_____	Prevalence Index Worksheet Total % cover of _____ Multiply by: OBL species _____ x1 _____ FACW species _____ x2 _____ FAC species _____ x3 _____ FACU species _____ x4 _____ UPL species _____ x5 _____ Column Totals _____ (A) _____ (B) Prevalence Index = B/A = _____
2. _____		_____	_____	_____	
3. _____		_____	_____	_____	
4. _____		_____	_____	_____	
Sapling/Shrub Stratum Total Cover: _____					
HERB STRATUM	Plot Size:	Absolute % cover	Dominant Species?	Indicator Status	
1. <i>Festuca perennis</i>	<u>5'r</u>	<u>75</u>	<u>Yes</u>	<u>FAC</u>	Hydrophytic Vegetation Indicators <input checked="" type="checkbox"/> Dominance Test is >50% <input type="checkbox"/> Prevalence Index is <= 3.0 ¹ <input type="checkbox"/> Morphological adaptations (provide supporting data in remarks) <input type="checkbox"/> Problematic hydrophytic vegetation ¹ (explain) ¹ Indicators of hydric soil and wetland hydrology must be present, unless disturbed or problematic.
2. <i>Hordeum marinum</i>		<u>20</u>	<u>Yes</u>	<u>FAC</u>	
3. _____		_____	_____	_____	
4. _____		_____	_____	_____	
5. _____		_____	_____	_____	
6. _____		_____	_____	_____	
7. _____		_____	_____	_____	
8. _____		_____	_____	_____	
Herb Stratum Total Cover: _____					
WOODY VINE STRATUM	Plot Size:	Absolute % cover	Dominant Species?	Indicator Status	
1. _____	<u>N/A</u>	_____	_____	_____	Hydrophytic Vegetation Present ? <input checked="" type="checkbox"/> Yes <input type="checkbox"/> No
2. _____		_____	_____	_____	
Woody Vines Total Cover: _____					
% Bare ground in herb stratum <u>5</u>		% cover of biotic crust <u>5</u>			

Remarks: Vegetation is dominated by hydrophytes.

SOIL

Sampling Point A-01

Profile description: (Describe to the depth needed to document the indicator or confirm the absence of indicators.)								
Depth (inches)	Matrix		Redox Features				Texture	Remarks
	Color (moist)	%	Color (moist)	%	Type ¹	Loc ¹		
0-10	10YR 4/2	95	7.5YR 3/4	3	C	M	clay loam	
			7.5YR 4/6	2	C	M, PL		

¹Type: C=Concentration, D=Depletion, RM=Reduced Matrix. ²Location: PL=Pore Lining, RC=Root Channel, M=Matrix

<p>Hydric Soil Indicators: (Applicable to all LRRs, unless otherwise noted.)</p> <p><input type="checkbox"/> Histosol (A1)</p> <p><input type="checkbox"/> Histic Epipedon (A2)</p> <p><input type="checkbox"/> Black Histic (A3)</p> <p><input type="checkbox"/> Hydrogen Sulfide (A4)</p> <p><input type="checkbox"/> Stratified Layers (A5)(LRR C)</p> <p><input type="checkbox"/> 1cm Muck (A9)(LRR D)</p> <p><input type="checkbox"/> Depleted Below Dark Surface (A11)</p> <p><input type="checkbox"/> Thick Dark Surface (A12)</p> <p><input type="checkbox"/> Sandy Mucky Mineral (S1)</p> <p><input type="checkbox"/> Sandy Gleyed Matrix (S4)</p>	<p><input type="checkbox"/> Sandy Redox (S5)</p> <p><input type="checkbox"/> Stripped Matrix (S6)</p> <p><input type="checkbox"/> Loamy Mucky Mineral (F1)</p> <p><input type="checkbox"/> Loamy Gleyed Matrix (F2)</p> <p><input checked="" type="checkbox"/> Depleted Matrix (F3)</p> <p><input type="checkbox"/> Redox Dark Surface (F6)</p> <p><input type="checkbox"/> Depleted Dark Surface (F7)</p> <p><input type="checkbox"/> Redox Depressions (F8)</p> <p><input type="checkbox"/> Vernal Pools (F9)</p>	<p>Indicators for Problematic Hydric Soils³:</p> <p><input type="checkbox"/> 1cm Muck (A9) (LRR C)</p> <p><input type="checkbox"/> 2cm Muck (A10)(LRR B)</p> <p><input type="checkbox"/> Reduced Vertic (F18)</p> <p><input type="checkbox"/> Red Parent Material (TF2)</p> <p><input type="checkbox"/> Other (explain in remarks)</p>
--	---	--

³Indicators of hydric vegetation and wetland hydrology must be present.

<p>Restrictive Layer (if present):</p> <p>Type: <u>N/A</u></p> <p>Depth (inches): _____</p>	<p>Hydric Soil Present ? <input checked="" type="checkbox"/> Yes <input type="checkbox"/> No</p>
--	---

Remarks: Hydric soil indicators present.

HYDROLOGY

<p>Wetland Hydrology Indicators:</p> <p>Primary Indicators (any one indicator is sufficient)</p> <p><input type="checkbox"/> Surface Water (A1)</p> <p><input checked="" type="checkbox"/> High Water Table (A2)</p> <p><input checked="" type="checkbox"/> Saturation (A3)</p> <p><input type="checkbox"/> Water Marks (B1)(Nonriverine)</p> <p><input type="checkbox"/> Sediment Deposits (B2)(Nonriverine)</p> <p><input type="checkbox"/> Drift Deposits (B3)(Nonriverine)</p> <p><input type="checkbox"/> Surface Soil Cracks (B6)</p> <p><input type="checkbox"/> Inundation Visible on Aerial Imagery (B7)</p> <p><input type="checkbox"/> Water-Stained Leaves (B9)</p> <p><input type="checkbox"/> Salt Crust (B11)</p> <p><input checked="" type="checkbox"/> Biotic Crust (B12)</p> <p><input type="checkbox"/> Aquatic Invertebrates (B13)</p> <p><input type="checkbox"/> Hydrogen Sulfide Odor (C1)</p> <p><input type="checkbox"/> Oxidized Rhizospheres along Living Roots (C3)</p> <p><input type="checkbox"/> Presence of Reduced Iron (C4)</p> <p><input type="checkbox"/> Recent Iron Reduction in PLoWed Soils (C6)</p> <p><input type="checkbox"/> Other (Explain in Remarks)</p>	<p>Secondary Indicators (2 or more required)</p> <p><input type="checkbox"/> Water Marks (B1)(Riverine)</p> <p><input type="checkbox"/> Sediment Deposits (B2)(Riverine)</p> <p><input type="checkbox"/> Drift Deposits (B3)(Riverine)</p> <p><input type="checkbox"/> Drainage Patterns (B10)</p> <p><input type="checkbox"/> Dry-Season Water Table (C2)</p> <p><input type="checkbox"/> Thin Muck Surface (C7)</p> <p><input type="checkbox"/> Crayfish Burrows (C8)</p> <p><input type="checkbox"/> Saturation Visible on Aerial Imagery (C9)</p> <p><input type="checkbox"/> Shallow Aquitard (D3)</p> <p><input type="checkbox"/> FAC-Neutral Test (D5)</p>
--	---

<p>Field Observations:</p> <p>Surface water present? <input type="checkbox"/> Yes <input checked="" type="checkbox"/> No Depth (inches): _____</p> <p>Water table present? <input checked="" type="checkbox"/> Yes <input type="checkbox"/> No Depth (inches): <u>8</u></p> <p>Saturation Present? <input checked="" type="checkbox"/> Yes <input type="checkbox"/> No Depth (inches): <u>6</u></p> <p>(includes capillary fringe)</p>	<p>Wetland Hydrology Present ? <input checked="" type="checkbox"/> Yes <input type="checkbox"/> No</p>
--	---

Describe recorded data (stream guage, monitoring well, aerial photos, etc.) if available.

Remarks: Wetland hydrology indicators present.

Wetland Determination Data Form - Arid West Region

Project/Site Wappo Hill City unincorporated County Napa Sampling Date 12/11/2024
 Applicant/Owner Constellation Brands State CA Sampling Point A-02
 Investigator(s) Aaron Arthur Section, Township, Range N/A
 Landform (hillslope, terrace, etc.) hillslope Local Relief (concave, convex, none) narrowly linear concave Slope(%) 0-2
 Subregion(LRR) LRR C (Medit. CA) Lat: 38.3959 Long: -122.3292 Datum: WGS 84
 Soil Map Unit Name Bale clay loam, 2-5% slopes NWI classification N/A

Are climatic/hydrologic conditions on-site typical for this time of year? Yes No (If no, explain in remarks)
 Are any of the following significantly disturbed? Vegetation Soil Hydrology Are "Normal Circumstances" present? Yes No
 Are any of the following naturally problematic? Vegetation Soil Hydrology (If needed, explain any answers in remarks)

SUMMARY OF FINDINGS - Attach site map showing sample point locations, transects, important features, etc.

Hydrophytic Vegetation Present? <input checked="" type="checkbox"/> Yes <input type="checkbox"/> No Hydric Soil Present? <input checked="" type="checkbox"/> Yes <input type="checkbox"/> No Wetland Hydrology Present? <input checked="" type="checkbox"/> Yes <input type="checkbox"/> No	Is the Sampled Area within a Wetland? <input checked="" type="checkbox"/> Yes <input type="checkbox"/> No
Remarks: Sample point situated in a broad hillside swale with a seep at the head. All three wetland parameters present.	

VEGETATION (use scientific names)

TREE STRATUM	Plot Size:	Absolute % cover	Dominant Species?	Indicator Status	
1. _____	<u>N/A</u>	_____	_____	_____	Dominance Test Worksheet Number of Dominant Species that are OBL, FACW, or FAC? <u>1</u> (A) Total number of dominant species across all strata? <u>1</u> (B) % of dominant species that are OBL, FACW, or FAC? <u>100</u> (A/B)
2. _____		_____	_____	_____	
3. _____		_____	_____	_____	
4. _____		_____	_____	_____	
Tree Stratum Total Cover: _____					
SAPLING/SHRUB STRATUM	Plot Size:	Absolute % cover	Dominant Species?	Indicator Status	
1. _____	<u>N/A</u>	_____	_____	_____	Prevalence Index Worksheet Total % cover of: _____ Multiply by: _____ OBL species _____ x1 _____ FACW species _____ x2 _____ FAC species _____ x3 _____ FACU species _____ x4 _____ UPL species _____ x5 _____ Column Totals _____ (A) _____ (B) Prevalence Index = B/A = _____
2. _____		_____	_____	_____	
3. _____		_____	_____	_____	
4. _____		_____	_____	_____	
Sapling/Shrub Stratum Total Cover: _____					
HERB STRATUM	Plot Size:	Absolute % cover	Dominant Species?	Indicator Status	
1. <i>Festuca perennis</i>	<u>5'r</u>	<u>90</u>	<u>Yes</u>	<u>FAC</u>	Hydrophytic Vegetation Indicators <input checked="" type="checkbox"/> Dominance Test is >50% <input type="checkbox"/> Prevalence Index is <= 3.0 ¹ <input type="checkbox"/> Morphological adaptations (provide supporting data in remarks) <input type="checkbox"/> Problematic hydrophytic vegetation ¹ (explain) ¹ Indicators of hydric soil and wetland hydrology must be present, unless disturbed or problematic.
2. <i>Ranunculus muricatus</i>		<u>10</u>	<u>No</u>	<u>FACW</u>	
3. _____		_____	_____	_____	
4. _____		_____	_____	_____	
5. _____		_____	_____	_____	
6. _____		_____	_____	_____	
7. _____		_____	_____	_____	
8. _____		_____	_____	_____	
Herb Stratum Total Cover: _____					
WOODY VINE STRATUM	Plot Size:	Absolute % cover	Dominant Species?	Indicator Status	
1. _____	<u>N/A</u>	_____	_____	_____	Hydrophytic Vegetation Present ? <input checked="" type="checkbox"/> Yes <input type="checkbox"/> No
2. _____		_____	_____	_____	
Woody Vines Total Cover: _____					
% Bare ground in herb stratum <u>1</u>		% cover of biotic crust <u>5</u>			

Remarks: Vegetation is dominated by hydrophytes.

SOIL

Sampling Point A-02

Profile description: (Describe to the depth needed to document the indicator or confirm the absence of indicators.)							
Depth (inches)	Matrix		Redox Features			Texture	Remarks
	Color (moist)	%	Color (moist)	%	Type ¹		
0-10	10YR 3/1	93	7.5YR 4/6	5	C	M, RC	gravelly clay loam
			7.5YR 3/4	2	C	M, PL	

¹Type: C=Concentration, D=Depletion, RM=Reduced Matrix. ²Location: PL=Pore Lining, RC=Root Channel, M=Matrix

Hydric Soil Indicators: (Applicable to all LRRs, unless otherwise noted.) <input type="checkbox"/> Histosol (A1) <input type="checkbox"/> Histic Epipedon (A2) <input type="checkbox"/> Black Histic (A3) <input type="checkbox"/> Hydrogen Sulfide (A4) <input type="checkbox"/> Stratified Layers (A5)(LRR C) <input type="checkbox"/> 1cm Muck (A9)(LRR D) <input type="checkbox"/> Depleted Below Dark Surface (A11) <input type="checkbox"/> Thick Dark Surface (A12) <input type="checkbox"/> Sandy Mucky Mineral (S1) <input type="checkbox"/> Sandy Gleyed Matrix (S4)	<input type="checkbox"/> Sandy Redox (S5) <input type="checkbox"/> Stripped Matrix (S6) <input type="checkbox"/> Loamy Mucky Mineral (F1) <input type="checkbox"/> Loamy Gleyed Matrix (F2) <input type="checkbox"/> Depleted Matrix (F3) <input checked="" type="checkbox"/> Redox Dark Surface (F6) <input type="checkbox"/> Depleted Dark Surface (F7) <input type="checkbox"/> Redox Depressions (F8) <input type="checkbox"/> Vernal Pools (F9)	Indicators for Problematic Hydric Soils³: <input type="checkbox"/> 1cm Muck (A9) (LRR C) <input type="checkbox"/> 2cm Muck (A10)(LRR B) <input type="checkbox"/> Reduced Vertic (F18) <input type="checkbox"/> Red Parent Material (TF2) <input type="checkbox"/> Other (explain in remarks)
---	--	---

³Indicators of hydric vegetation and wetland hydrology must be present.

Restrictive Layer (if present): Type: <u>N/A</u> Depth (inches): _____	Hydric Soil Present ? <input checked="" type="checkbox"/> Yes <input type="checkbox"/> No
---	---

Remarks: Hydric soil indicators present.

HYDROLOGY

Wetland Hydrology Indicators: Primary Indicators (any one indicator is sufficient)	Secondary Indicators (2 or more required)
<input checked="" type="checkbox"/> Surface Water (A1) <input checked="" type="checkbox"/> High Water Table (A2) <input checked="" type="checkbox"/> Saturation (A3) <input type="checkbox"/> Water Marks (B1)(Nonriverine) <input type="checkbox"/> Sediment Deposits (B2)(Nonriverine) <input type="checkbox"/> Drift Deposits (B3)(Nonriverine) <input type="checkbox"/> Surface Soil Cracks (B6) <input type="checkbox"/> Inundation Visible on Aerial Imagery (B7) <input type="checkbox"/> Water-Stained Leaves (B9)	<input type="checkbox"/> Salt Crust (B11) <input checked="" type="checkbox"/> Biotic Crust (B12) <input type="checkbox"/> Aquatic Invertebrates (B13) <input type="checkbox"/> Hydrogen Sulfide Odor (C1) <input checked="" type="checkbox"/> Oxidized Rhizospheres along Living Roots (C3) <input type="checkbox"/> Presence of Reduced Iron (C4) <input type="checkbox"/> Recent Iron Reduction in PLoWed Soils (C6) <input type="checkbox"/> Other (Explain in Remarks)
	<input type="checkbox"/> Water Marks (B1)(Riverine) <input type="checkbox"/> Sediment Deposits (B2)(Riverine) <input checked="" type="checkbox"/> Drift Deposits (B3)(Riverine) <input type="checkbox"/> Drainage Patterns (B10) <input type="checkbox"/> Dry-Season Water Table (C2) <input type="checkbox"/> Thin Muck Surface (C7) <input type="checkbox"/> Crayfish Burrows (C8) <input type="checkbox"/> Saturation Visible on Aerial Imagery (C9) <input type="checkbox"/> Shallow Aquitard (D3) <input checked="" type="checkbox"/> FAC-Neutral Test (D5)

Field Observations: Surface water present? <input checked="" type="checkbox"/> Yes <input type="checkbox"/> No Depth (inches): <u>skiff</u> Water table present? <input checked="" type="checkbox"/> Yes <input type="checkbox"/> No Depth (inches): <u>0</u> Saturation Present? <input checked="" type="checkbox"/> Yes <input type="checkbox"/> No Depth (inches): <u>0</u> (includes capillary fringe)	Wetland Hydrology Present ? <input checked="" type="checkbox"/> Yes <input type="checkbox"/> No
--	---

Describe recorded data (stream gauge, monitoring well, aerial photos, etc.) if available.

Remarks: Wetland hydrology indicators present.

ATTACHMENT D – REPRESENTATIVE PHOTOGRAPHS



Understory of coast live oak woodland with no vertical heterogeneity and understory of non-native herbaceous species.



Understory of coast live oak woodland with no vertical heterogeneity and understory of non-native herbaceous species.



Large coast live oak (*Quercus agrifolia*) with substrates that may provide maternity roosting for bats.



Large granary tree: valley oak (*Quercus lobata*) with acorns cached by woodpeckers.



Soils from sample point A-02 (broad hillslopes swale) with substantial redoximorphic features (oxidized iron).



Soils from sample point A-01 (ditch wetland) with substantial amount redoximorphic features (oxidized iron) and saturation to the surface.

ATTACHMENT E – OBSERVED WILDLIFE SPECIES: DECEMBER 2024 AND JANUARY 2025

Table E-2. Wildlife species observed in and around the Study Area: December 18, 2024 and January 16, 2025

SCIENTIFIC NAME	COMMON NAME
Mammals	
<i>Odocoileus hemionus columbianus</i>	black-tailed deer
<i>Otospermophilus beecheyi</i>	California ground squirrel
<i>Sciurus griseus</i>	western gray squirrel
Birds	
<i>Aphelocoma californica</i>	western scrub-jay
<i>Baeolophus inornatus</i>	oak titmouse
<i>Buteo jamaicensis</i>	red-tailed hawk
<i>Callipepla californica</i>	California quail
<i>Cathartes aura</i>	turkey vulture
<i>Corax corax</i>	common raven
<i>Elanus leucurus</i>	white-tailed kite
<i>Falco sparverius</i>	American kestrel
<i>Haemorhous mexicanus</i>	house finch
<i>Junco hyemalis</i>	dark-eyed junco
<i>Melanerpes formicivorus</i>	acorn woodpecker
<i>Mimus polyglottos</i>	northern mockingbird
<i>Sayornis nigricans</i>	black phoebe
<i>Sialia mexicana</i>	western bluebird
<i>Spinus psaltria</i>	lesser goldfinch
<i>Sturnella neglecta</i>	western meadowlark
<i>Sturnus vulgaris</i>	European starling
<i>Turdus migratorius</i>	American robin
<i>Zenaida macroura</i>	mourning dove