



**DRAFT SUPPLEMENTAL INITIAL STUDY/ MITIGATED NEGATIVE DECLARATION
OESTE BASINS GROUNDWATER RECHARGE PROJECT
PINON HILLS, CALIFORNIA**

PREPARED FOR:



MOJAVE WATER AGENCY
13846 Conference Center Drive, Apple Valley, CA 92307

PREPARED BY:



ARDURRA GROUP, INC.
43410 Business Park Drive, Temecula CA, 92590

MAY 6, 2026

SUPPLEMENTAL INITIAL STUDY/ MITIGATED NEGATIVE DECLARATION

Draft

OESTE BASINS GROUNDWATER RECHARGE PROJECT
PINON HILLS, CALIFORNIA

PREPARED FOR:

Mojave Water Agency

13846 Conference Center Drive

Apple Valley, CA 92307

PREPARED BY:

ARDURRA GROUP, INC.

43410 Business Park Drive

Temecula CA, 92590

MAY 6, 2026

(Intentionally Blank Page)

Table of Contents

1.0 INTRODUCTION	1
1.1 Purpose	1
1.2 Environmental Analysis and Conclusions.....	1
1.3 Incorporation by Reference	1
1.4 Supplemental IS/MND Process	2
1.5 Contact Person.....	2
2.0 PROJECT DESCRIPTION.....	3
2.1 Location and Setting.....	3
2.2 Project Description.....	3
3.0 ENVIRONMENTAL IMPACTS.....	10
3.1 AESTHETICS	11
3.2 AGRICULTURE AND FORESTRY RESOURCES.....	13
3.3 AIR QUALITY	15
3.4 BIOLOGICAL RESOURCES.....	17
3.5 CULTURAL RESOURCES	19
3.6 ENERGY	21
3.7 GEOLOGY AND SOILS.....	23
3.8 GREENHOUSE GAS EMISSIONS	25
3.9 HAZARDS AND HAZARDOUS MATERIALS.....	26
3.10 HYDROLOGY AND WATER QUALITY	28
3.11 LAND USE AND PLANNING	30
3.12 MINERAL RESOURCES	31
3.13 NOISE	32
3.14 POPULATION AND HOUSING	34
3.15 PUBLIC SERVICES.....	35
3.16 RECREATION.....	37
3.17 TRANSPORTATION	38
3.18 TRIBAL CULTURAL RESOURCES	40
3.19 UTILITIES AND SERVICE SYSTEMS.....	42
3.20 WILDFIRE	44
3.21 MANDATORY FINDINGS OF SIGNIFICANCE	46
4.0 LIST OF PREPARERS	48

4.1 MOJAVE WATER AGENCY..... 48
4.2 CONSULTANTS 48
5.0 REFERENCES 49

FIGURES

Figure 1 – Regional Vicinity Map 8
Figure 2 – Project Location Map 9

1.0 INTRODUCTION

This environmental document is a Supplemental Initial Study / Mitigated Negative Declaration (IS/MND) to the Oeste Basins Groundwater Recharge Project (Approved Project) IS/MND, adopted in February 2024 (State Clearinghouse #2023080428), by the Mojave Water Agency (MWA). At that time, the Project comprised a demonstration effort (“Demonstration Project”) intended to assess the feasibility of groundwater recharge at MWA’s Oeste project site in unincorporated San Bernardino County, using water drawn from the concrete-lined California Aqueduct (owned and operated by the California Department of Water Resources (DWR)).

This Supplemental IS/MND addresses the potential environmental impacts associated with modifications made to the Project since the filing of the Notice of Determination for the Approved Project. These modifications, based upon anticipated results from the Demonstration Project indicating that groundwater recharge is determined feasible, comprise the construction and operation of permanent recharge facilities at the same location (“Permanent Project”). Modifications would replace the temporary siphon with a new permanent turnout from the California Aqueduct including a traveling screen facility, and a permanent pipeline to convey State Water Project (SWP) water to the Oeste Recharge Basin. Improvements would be located within the DWR right-of-way and MWA property, within the Area of Potential Effect (APE) previously evaluated for the Oeste Demonstration Project and would not involve federal land.

Details regarding the modifications to the Project are provided in Section 2.2 – Project Description. These additional components of the Project were not included in the original IS/MND and are being evaluated herein. As demonstrated in this Supplemental IS/MND, there are no additional significant impacts pursuant to the California Environmental Quality Act (CEQA) that are introduced by the Project modifications.

1.1 Purpose

When a Proposed Project is changed or there are changes in environmental setting, a determination must be made by the Lead Agency as to whether an Addendum, a Supplemental MND, or Subsequent MND is prepared. CEQA Guidelines Sections 15162 and 15163 set forth criteria to assess which environmental document is appropriate. A Supplemental IS/MND is appropriate if only minor additions or changes would be necessary to make the previous CEQA document adequately apply to the project in the changed situation.

Based upon the information provided in Section 3.0 of this document, the revised Project components would not result in new significant impacts or substantially increase the severity of impacts previously identified in the original IS/MND. As such, a Supplemental IS/MND is appropriate, and this Supplemental IS/MND has been prepared to address the environmental effects of the Project modifications.

1.2 Environmental Analysis and Conclusions

This Supplemental IS/MND addresses the environmental effects associated only with modifications to the Approved Project that have occurred since adoption of the IS/MND. The conclusions of the analysis in this Supplemental IS/MND remain consistent with those made in the original IS/MND. No new significant impacts would result, and no substantial increase in severity of impacts would result from those previously identified in the original IS/MND. Mitigation measures from the original IS/MND would also be applicable to the areas analyzed within this Supplemental IS/MND (See Section 3 for more information).

1.3 Incorporation by Reference

In compliance with CEQA Guidelines Section 15150, this Supplemental IS/MND has incorporated by reference MWA’s Oeste Basins Groundwater Recharge Project Mitigated Negative Declaration, and Mitigation Monitoring & Reporting Program, adopted by MWA in February 2024 (State Clearinghouse #2023080428). Information from these documents incorporated by reference into this Supplemental IS/MND has been briefly summarized in the appropriate section(s) which follow, and the relationship between the incorporated parts of the referenced documents and this

Supplemental IS/MND has been described. The original IS/MND and MMRP are available for review at the Mojave Water Agency, 13846 Conference Center Drive, Apple Valley, CA 92307.

1.4 Supplemental IS/MND Process

As described in Section 1.1, a Supplemental IS/MND to an adopted negative declaration may be prepared if only minor technical changes or additions are necessary. The Supplemental IS/MND will be circulated for a public review period of at least 30 days. The decision-making body shall consider the Supplemental IS/MND with the adopted negative declaration prior to making a decision on the project. Once adopted, the Supplemental IS/MND, along with the original IS/MND, is placed in the Administrative Record, and the CEQA process is complete. A copy of the Supplemental IS/MND will be transmitted to the State Clearinghouse.

1.5 Contact Person

Any questions about the preparation of the Supplemental IS/MND, its assumptions, or its conclusions should be referred to the following:

Mojave Water Agency

Attn: Tony Winkel, Senior Principal Hydrogeologist
13846 Conference Center Drive
Apple Valley, CA 92307
Office Phone: (760) 946-7037
Email: TWinkel@MojaveWater.org

2.0 PROJECT DESCRIPTION

2.1 Location and Setting

The Project Site is located within the unincorporated area of San Bernardino County known as Piñon Hills, approximately 0.88 mile south of SR-18 and approximately 3.6 miles east of SR-138 (Figure 1 – Regional Vicinity Map). Specifically, the Project would occur within a 10-acre vacant parcel (APN 3099-081-01) located on the south side of Cayucos Drive, approximately 0.36 mile west of Oasis Road and approximately 0.45 mile east of 263rd Street East, and the associated piping to be located within an adjacent 0.03-acre area within the Department of Water Resources (DWR) right-of-way (Figure 2 – Project Location Map). The Project is located at approximately Latitude 34°29'13.14"N, Longitude 117°39'3.41"W and can be found within the U.S. Geological Survey (USGS) Mescal Creek 7.5' Topographic Map, within Section 30, Township 5 North, Range 7 West.

2.2 Project Description

Overview

MWA proposes to construct two groundwater recharge basins of 3.1 and 3.3 acres, respectively, within a 10-acre vacant parcel located on the south side of Cayucos Drive, approximately 0.36 mile west of Oasis Road, within Assessor's Parcel Number (APN) 3099-081-01 with some of the associated basin piping in an adjacent 0.03-acre area within the DWR right-of-way, within the unincorporated area of San Bernardino County known as Piñon Hills. Based upon anticipated infiltration rates, the Proposed Project is designed to draw approximately 3,400 to 5,600 acre-feet/year of State Water Project water from the California aqueduct in wet years for groundwater recharge and storage in the Oeste groundwater subbasin.

CEQA documentation for the Oeste Demonstration Project comprised an IS/MND, adopted in 2024. The major components of the Demonstration Project are the following:

- One (1) recharge basin will be constructed on the south half of the Oeste recharge basin site.
- A siphon consisting of six (6) 6-inch diameter inlet pipes in series and a 14-inch diameter main pipeline, approximately 500 feet in total length, will convey water from the California Aqueduct to the recharge basin.
- The siphon will be primed using a vacuum pump system housed in a shipping container Conex box.
- An inline magnetic flow meter will be installed in a below grade corrugated metal enclosure.
- Civil site development will include chain link fencing around the entire site, dirt access roads around the south basin, a concrete access ramp into the basin, and drainage and security improvements.
- A temporary ramp to provide vehicular access along the existing DWR aqueduct access road over the siphon inlet pipes.
- Electrical improvements will include Southern California Edison (SCE) constructing a new overhead electrical line on Cayucos Drive from the intersection of Oasis Road to the proposed site to establish a dedicated power service for the demonstration and permanent phases of the Project.

Once the Demonstration Project is constructed, it is anticipated that MWA will operate for one to two years to assess whether groundwater recharge is determined feasible and consistent with MWA's objectives. If it is determined that the objectives can be met, MWA will proceed with construction and operation of the Oeste Permanent Project.

The Oeste Permanent Project will require modifications to the Demonstration Project summarized above and evaluated in the prior IS/MND. The Project would include a new permanent turnout from the California Aqueduct including a traveling screen facility, and a permanent siphon pipeline to convey State Water Project (SWP) water to the Oeste Recharge Basin. Improvements would be located within the DWR right-of-way and MWA property in unincorporated San Bernardino County, within the Area of Potential Effect (APE) previously evaluated for the Oeste Demonstration Project and would not involve federal land. The major components of the Permanent Project are the following:

- Remove the following improvements constructed as part of the Demonstration Project. Below describes what will be done with each component after removal:
 - The vacuum pump and associated equipment, piping, and valving will be salvaged and reinstalled.
 - The flow meter, shipping container and main line valves will be salvaged and delivered to MWA.
 - The temporary ramp over the siphon inlet piping will be returned to rental company.

- The 6-inch diameter siphon inlet pipes, the 14-inch siphon pipeline, except the section of pipe which discharges into the south basin and the associated discharge structure, and the corrugated metal enclosures will be removed and legally disposed.
- Construct one (1) recharge basin on the north half of the Oeste recharge basin site. The existing basin on the south half of the site will be protected in place.
- Construct a turnout structure at the California Aqueduct, including a traveling screen system (to remove debris and algae from the source water) and the siphon intake. In addition, an access road from the basin site to the turnout will be included in the design.
- Construct 20-inch/14-inch siphon pipelines approximately 650 feet in length to convey water from the turnout structure to the recharge basins. The section of 14-inch siphon from the Demonstration Project that discharges into the south basin will remain in place.
- Install a vacuum pump system to prime the siphon and remove nuisance air from the siphon, using the pump and associated equipment from the Demonstration Project.
- Construct an electrical building to house electrical equipment, SCADA equipment, and the vacuum pump system.
- Construct two concrete vaults near the high point of the siphon pipeline. One vault will house the connection point of the vacuum pump system to the siphon, and the other will house the flowmeter (this is a new meter as the meter from the Demonstration Project is a different size).
- Install three (3) monitoring wells consisting of one (1) deep monitoring well and two (2) shallow monitoring wells to monitor groundwater level and water quality at various depths in the aquifers. Drilling discharge water will be contained within a temporary onsite storage tank for discharge to land.

Proposed Project Modifications

Proposed Project modifications associated with the Oeste Permanent Project comprise the following:

Demolition

Construction of the Permanent Project will include demolition of a number of improvements that were constructed during the Demonstration Project. The primary improvement to be removed is the majority of the 14-inch siphon which conveyed water from the California Aqueduct to the demonstration (south) recharge basin. The majority of the pipeline is buried at shallow depth and on a similar alignment to the proposed permanent siphon pipeline alignment, so the siphon will generally need to be removed and disposed of, although a short section of the pipe under the slope that discharges to the south basin will be protected and reused.

The above-grade portion of the siphon at and near the aqueduct will also be removed, as will the temporary pipe ramp constructed to provide access over the inlet piping; the ramp will be returned to the rental company that supplied it. This area near the aqueduct will need to be cleared, and the proposed turnout constructed in this area.

The vacuum pump system from the Demonstration Project will be designed so that it can be reused for the Permanent Project. The vacuum pump system, including the vacuum pump, small pressure vessels, piping, valving, and appurtenances, will be removed, stored and reinstalled in the new electrical building as discussed below. The shipping container which housed the vacuum pump system during the Demonstration Project will no longer be necessary and will be salvaged and returned to MWA. The flow meter and 14-inch valves used for the Demonstration Project will also be salvaged and returned to MWA.

The remaining components of the Demonstration Project, including the south recharge basin, site access roads, drainage improvements, fencing, and security improvements will remain in place and be protected during construction of the Permanent Project.

Site Grading

The conceptual recharge basin layout was primarily developed during design of the Demonstration Project but has been fine-tuned during preliminary design of the Permanent Project. The final grading for the southern basin will be completed during construction of the Demonstration Project, and the area of the future northern basin will be cleared and grubbed, temporarily graded generally flat, and used for staging and stockpiling during the Demonstration Project, with the final grading being completed during the Permanent Project. The following parameters used during the design of the Demonstration Project have been applied to the Permanent Project as well:

- Maximum Basin Side Slope = 3:1 (horizontal:vertical)
- Maximum Operating Depth of Water in the Basin = 1.5 feet
- Minimum Freeboard = 3 feet
- Minimum Site Access Road Width = 16 feet
- Minimum Basin Access Ramp Width = 20 feet
- Maximum Basin Access Road Slope = 6%

Constraints that affect the grading of the north basin are the location of the existing monitoring wells #1 and #2 in the northeast corner of the site and proposed monitoring well #3 in the northwest corner of the site. The three monitoring wells will be protected in place during construction, while ensuring access to each monitoring well for periodic service and well rehabilitation during and after construction.

The basins are fed by a siphon pipeline with a basin inlet structure consisting of a two-chamber vault discharging at the floor elevation of the basin. The pipe will penetrate the wall of the first chamber, which will be watertight and where the control valve will be located. The pipe will then enter the second chamber where it will terminate and discharge the water. The roof of the second chamber will be open and grated so water can flow upward into the basin through the grating. This will create a consistent free water surface to keep air from entering the siphon, and will also allow the water to enter the basin at a slower velocity reducing the likelihood of erosion; rip rap will be placed around the structure to further reduce erosion. The basin inlet structure for the north basin will be constructed as part of the Permanent Project whereas the basin inlet structure for the south basin will be constructed with the south basin as part of the Demonstration Project, and in place at the time of the Permanent Project. As an option at the discretion of MWA, non-grouted rip rap slope armoring will be provided on all sides of the north basin to match the design of the south basin constructed during the Demonstration Project.

The grading of the north basin would produce earthwork quantities of 27,000 cubic yards of cut and 800 cubic yards of fill, requiring a net volume of 26,000 cubic yards of export.

Aqueduct Turnout

The recharge basins under the permanent configuration will be fed from the aqueduct using a siphon, similar to the Demonstration Project. At the upstream end of the system there will be a turnout structure which will act as a forebay for the siphon pipeline. The turnout structure houses a traveling screen to remove debris and algae from the source water. The turnout structure is designed with a hatch to provide access to the isolation valves and the underside of the traveling screen.

Following input from MWA, the turnout structure will be designed to house two traveling screens. Only one traveling screen is required for full development of the Oeste basins. The option to install a second traveling screen in the future is desired as nearby property may become available where additional recharge basins could be constructed. As such, it is proposed to construct a turnout structure that will consist of two inlet bays; a single traveling screen will be installed as part of the Permanent Project and metal plating will be installed in the second inlet bay to prevent water from passing through the opening unscreened.

The traveling screen will include provisions so it can be removed from the turnout structure with a crane for maintenance without the need to dewater the turnout (which would require installing a coffer dam) or the need for divers.

Siphon Pipeline

The siphon pipeline will convey aqueduct water from the turnout to the two recharge basins. The pipeline will be designed as a siphon, similar to the design of the Demonstration Project. Since the actual infiltration rate at the site is unknown until the Demonstration Project is implemented, the preliminary design assumes the volumetric recharge rate of 10 CFS. As such, the siphon pipeline has been sized with a main diameter of 20-inch from the turnout to the branch for the basins, and then each basin branch will have a diameter of 14-inch. These pipe sizes will provide flexibility in delivering the desired flow rate to ensure the maximum infiltration can be achieved. Approximately 350 linear feet of 20-inch pipe is proposed, as well as approximately 225 linear feet of 14-inch pipe. Sizing the basin branch piping at 14-inch will allow the piping and basin inlet structure from the Demonstration Project to be reused as part of the Permanent Project.

The actual flow rate through the pipeline will vary based upon the infiltration rate which will vary throughout the year based upon subsurface hydrologic conditions. The flow rate into the individual basins will be controlled with 14-inch plug valves installed at the inlet structure to each individual basin. The valves are proposed to be motor operated and controlled via

SCADA, so the level in each basin can be adjusted remotely, with the level set point being approximately 1.5 feet of depth. These valves will be installed in a vault in the basin to allow for operation and maintenance. A separate set of butterfly valves installed at the tee branches to each basin will be used for isolation, allowing a single basin to be taken offline while the other basin remains operational.

The pipeline is proposed to be cement mortar lined and coated steel pipe. The siphon will be primed using the same vacuum pump and as many of the system components used as part of the Demonstration Project.

Vacuum Pump Connection and Meter Vaults

Two vaults will be constructed along the siphon pipeline alignment. One vault will be constructed at the high point of the siphon pipeline, inside which a tee will be installed. The tee will have a 4-inch branch with a 4-inch blind flange where the 2-inch suction piping from the vacuum pump will connect. The 2-inch vacuum pump suction piping will penetrate the wall of the vault and run buried to the vacuum pump located in the electrical building.

The second vault will be located just downstream of the first and will house a flow meter to measure the total flow of water conveyed from the aqueduct and to the recharge basins; that data will be provided to both MWA and DWR. Additional coordination will be conducted with DWR to ensure their metering, display, and other instrumentation requirements are included in the design.

Both vaults will be precast concrete vaults with an access hatch and ladder. To minimize vault size, a buried isolation valve will be installed upstream of the vaults. This single valve will allow the system to be drained for maintenance. It is anticipated that the vaults will have interior plan dimensions of 6 feet by 8 feet and total depths of approximately 7.5 and 9 feet, respectively.

Electrical Building

An electrical building will be constructed to house the vacuum pump and associated valves, piping, and appurtenances, as well as all electrical and SCADA panels. Nearly all equipment to be installed in the electrical building will have been originally installed in the shipping container as part of the Demonstration Project and then uninstalled and reinstalled as part of the Permanent Project.

The electrical building will be constructed of CMU with a concrete slab on grade and spread footing. The approximate interior dimensions of the building will be 10-feet by 14-feet. The building will have a gable styled standing seam metal roof. The building will have a forced air ventilation system but no air conditioning.

Site Improvements

To the greatest extent possible, the site improvements that were completed during the Demonstration Project will be retained. The following improvements remain to be completed as part of the Permanent Project improvements.

- **Improvements at Aqueduct Turnout:** The aqueduct turnout will be a concrete structure connected to the wall of the aqueduct, extending away from the aqueduct approximately 20 to 25 feet. The extension includes above grade facilities related to the traveling screen, maintenance access into the turnout, and other miscellaneous improvements. These improvements will extend into the area where the DWR aqueduct access road currently exists. As a result, the existing access road will be realigned around the aqueduct turnout improvements. The improvements in this area will also include an access road from the basin site to the turnout.
- **Basin Access Ramp:** A concrete access ramp for the north basin will be constructed as part of the basin grading. The ramp will be 20 feet wide with a maximum slope of 6%.
- **Perimeter Access Roads:** An access road will be constructed around the north basin's north perimeter to provide complete access around the north basin. The design parameters will match that of the rest of the site: 16-foot-wide access road constructed with a finished surface of aggregate base material. The rest of the site that is impacted by construction of the Permanent Project will be restored to pre-project conditions.
- **Site Access:** As part of the Demonstration Project, access points with 20-foot double swing gates will be constructed at the northwest, northeast, and southwest corners of the site. No additional access will be constructed as part of the Permanent Project.

- **Basin Site Fencing:** The site is completely enclosed by fencing as part of the Demonstration Project. Additional fencing around the turnout structure will be placed during the Permanent Project to protect those improvements from theft and vandalism. The fence design will include a 6-foot-high chain link fence topped with 3-strand barbed wire and razor wire.
- **Security:** Additional security measures required for the Permanent Project are a security camera at the turnout structure to provide remote video monitoring of this area.

Electrical and Instrumentation

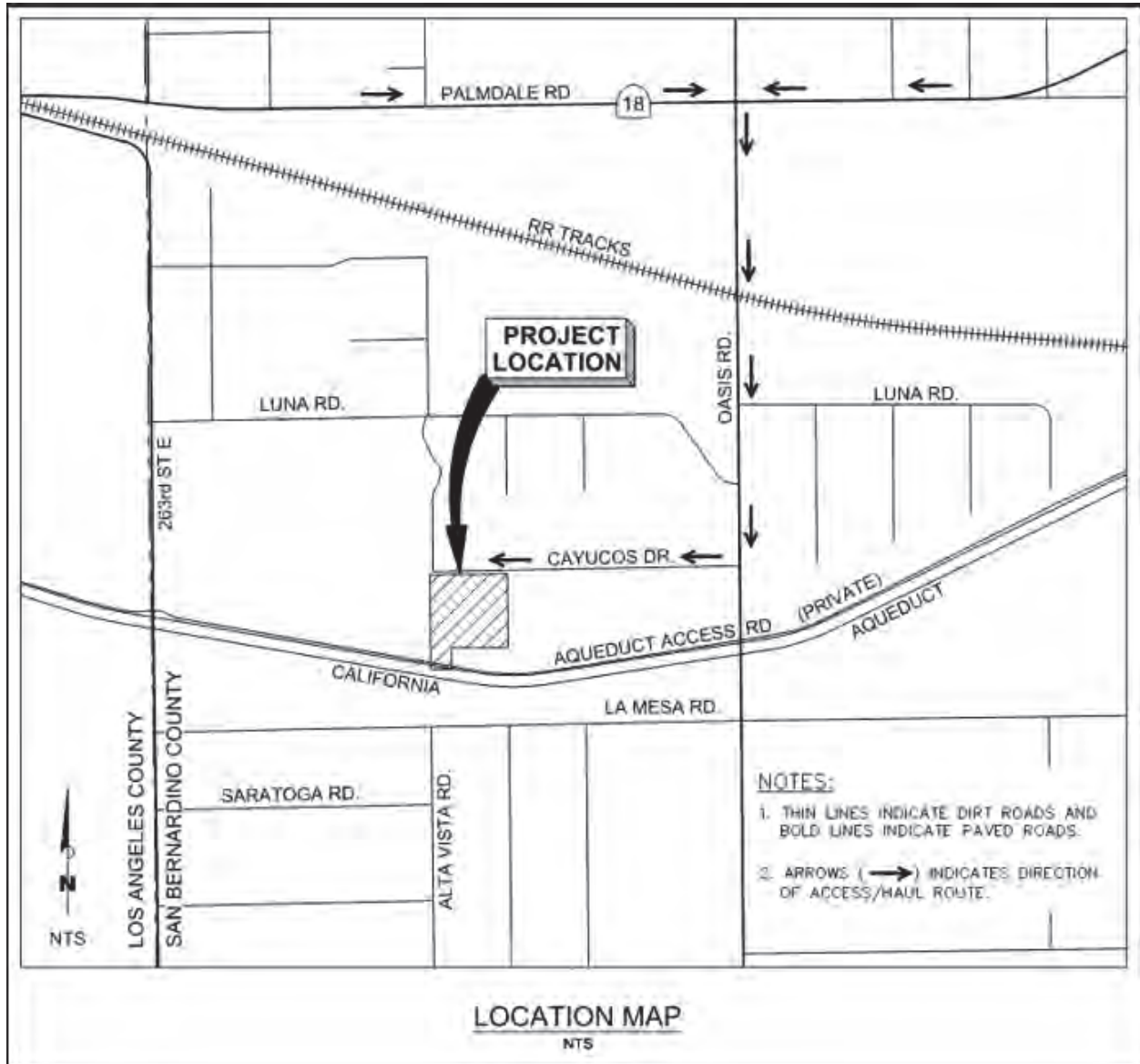
As part of the design phase for the Demonstration Project, it was determined that a dedicated power service from Southern California Edison (SCE) will be pursued and constructed as part of the Demonstration Project. Therefore, the service will be operational at the time of the Permanent Project construction. Initial coordination with SCE is underway. The service is anticipated to include approximately 1,300 linear feet of new overhead power lines along Cayucos Drive to the northeast corner of the Oeste site, where a new transformer and meter will be installed. The service is sized at 100A, 240-volt, single phase power, which includes improvements for the Demonstration Project and Permanent Project. The electrical equipment remaining from the Demonstration Project and required for the Permanent Project, including control panels, local monitoring readouts, and security and lighting controls, will be located in a small building in the southwest corner of the site. An additional control panel specific to the traveling screen(s) will be located at the turnout structure.

Instrumentation remaining from the Demonstration Project will include level monitoring equipment for the south basin, as well as communication equipment. Instrumentation improvements for the Permanent Project will include a flow meter and level monitor equipment for the north basin, matching the equipment installed for the south basin. There is no Supervisory Control and Data Acquisition (SCADA) equipment present at the site for remote monitoring. A cellular connection to MWA's SCADA system will be utilized during the Demonstration Project, however it is recommended to construct an antenna-based SCADA communication system as part of the Permanent Project. A communication line-of-site study survey will be required to determine if a direct connection can be made with existing MWA SCADA equipment, or if additional repeater antennae are required to complete the connection.

FIGURE 1 – REGIONAL VICINITY MAP



FIGURE 2 – PROJECT LOCATION MAP



3.0 ENVIRONMENTAL IMPACTS

This Supplemental IS-MND evaluates potential environmental impacts which could result from the Modified Project.

Appendix G of the State CEQA Guidelines provides a checklist of environmental issues areas which are suggested as the issue areas which should be assessed in CEQA analyses. The 2023 IS/MND addressed all suggested environmental issue areas included in the version of Appendix G of the CEQA Guidelines in effect at the time of publication.

To provide a thorough and conservative analysis of potential impacts associated with the Modified Project, this Supplemental IS/MND addresses the CEQA Appendix G environmental issue areas, as listed below.

- Aesthetics
- Agriculture and Forestry
- Air Quality
- Biological Resources
- Cultural Resources
- Energy
- Geology and Soils
- Greenhouse Gas Emissions
- Hazards and Hazardous Materials
- Hydrology / Water Quality
- Land Use / Planning
- Mineral Resources
- Noise
- Population / Housing
- Public Services
- Recreation
- Transportation
- Tribal Cultural Resources
- Utilities / Service Systems
- Wildfire
- Mandatory Findings of Significance

Potential environmental impacts of the Modified Project are analyzed to determine whether impacts are consistent with the impact analyses provided in the 2023 IS/MND, and whether additional mitigation measures are required to minimize or avoid potential impacts. For each checklist question in each issue area, this Supplemental IS/MND evaluates the five questions below to document consistency with Section 15164 of the State CEQA Guidelines:

- **What impact conclusion was presented in the adopted IS/MND?**
This column identifies the level of significance presented in the adopted IS/MND for each respective environmental discipline topic.
- **Do proposed changes require major revisions to the Adopted IS/MND?**
Pursuant to CEQA Guidelines Section 15162(a)(1), this column indicates whether the changes represented by the revised project would result in new significant environmental impacts not previously identified or mitigated by the original IS/MND, or whether the changes would result in a substantial increase in the severity of a previously identified significant impact.
- **Do new circumstances require major revisions to the Adopted IS/MND?**
Pursuant to CEQA Guidelines Section 15162(a)(2), this column indicates where there have been substantial changes with respect to the circumstances under which the project is undertaken that would require major revisions to the IS/MND, due to the involvement of new significant environmental effects or a substantial increase in the severity of previously identified significant effects.
- **Any new information resulting in new or substantially more severe significant impacts?**
Pursuant to CEQA Guidelines Section 15162(a)(3)(a-d), this column indicates whether new information of substantial importance, which was not known and could not have been known with the exercise of reasonable diligence at the time the previous MND was certified as complete, would result in new or substantially more severe significant impacts.
- **Do 2023 IS/MND mitigation measures address and/or resolve impacts?**
Pursuant to CEQA Guidelines Section 15162(a)(3), this column indicates whether the IS/MND provides mitigation measures to address effects in the related impact category.

3.1 AESTHETICS

Issues	Adopted IS/MND Conclusion	Do Proposed Changes Require Major Revisions to the Adopted IS/MND?	Do New Circumstances Require Major Revisions to the Adopted IS/MND?	Any New Information Resulting in New or Substantially More Severe Significant Impacts?	Do Adopted IS/MND Mitigation Measures Address and/or Resolve Impacts?
AESTHETICS. Would the Project:					
a) Have a substantial adverse effect on a scenic vista?	No Impact	No	No	No	N/A
b) Substantially damage scenic resources, including, but not limited to, trees, rock outcroppings, and historic buildings within a state scenic highway?	No Impact	No	No	No	N/A
c) In nonurbanized areas, substantially degrade the existing visual character or quality of public views of the site and its surroundings? (Public views are those that are experienced from publicly accessible vantage point). If the Project is in an urbanized area, would the Project conflict with applicable zoning and other regulations governing scenic quality?	No Impact	No	No	No	N/A
d) Create a new source of substantial light or glare which would adversely affect day or nighttime views in the area?	No Impact	No	No	No	N/A

DISCUSSION

The previously adopted IS/MND determined that the Proposed Project would have no impacts on aesthetics. The proposed revisions to the Project, as described in Section 2.2 - Project Description, would be located within the DWR right-of-way and MWA property in unincorporated San Bernardino County, within the Area of Potential Effect (APE) previously evaluated for the Oeste Demonstration Project in the prior IS/MND.

There are no scenic vistas or state designated scenic highways in the Project area. The additional Project components (recharge basin, permanent turnout, traveling screen system, access road, pipeline, and supporting facilities including a vacuum pump system, electrical building, concrete vaults, and three monitoring wells) would not substantially degrade the existing visual character or quality of the Project area. The appearance, materials, and characteristics of the new components would be similar to those described in the prior IS/MND. There is no area lighting associated with the additional improvements. As such, the proposed additional improvements would not result in impacts beyond what was analyzed in the original IS/MND. Therefore, the Project would continue to have no impacts on aesthetics.

MITIGATION MEASURES

The Project, as presented in the adopted IS/MND, would have no impacts to scenic vistas, scenic resources, or visual character or quality, nor would the Project create light or glare adversely affecting views. Revisions to the Project, as presented in this Supplemental IS/MND, would have no new or substantially more severe impacts to Aesthetics. No mitigation measures apply.

CONCLUSION

No Impact (same as adopted IS/MND).

3.2 AGRICULTURE AND FORESTRY RESOURCES

Issues	Adopted IS/MND Conclusion	Do Proposed Changes Require Major Revisions to the Adopted IS/MND?	Do New Circumstances Require Major Revisions to the Adopted IS/MND?	Any New Information Resulting in New or Substantially More Severe Significant Impacts?	Do Adopted IS/MND Mitigation Measures Address and/or Resolve Impacts?
AGRICULTURE AND FORESTRY RESOURCES. Would the Project:					
a) Convert Prime Farmland, Unique Farmland, or Farmland of Statewide Importance (Farmland), as shown on the maps prepared pursuant to the Farmland Mapping and Monitoring Program of the California Resources Agency, to non-agricultural use?	No Impact	No	No	No	N/A
b) Conflict with existing zoning for agricultural use, or a Williamson Act contract?	No Impact	No	No	No	N/A
c) Conflict with existing zoning for, or cause rezoning of, forest land (as defined in Public Resources Code Section 12220(g)), timberland (as defined by Public Resources Code Section 4526), or timberland zoned Timberland Production (as defined by Government Code Section 51104(g))?	No Impact	No	No	No	N/A
d) Result in the loss of forest land or conversion of forest land to non-forest use?	No Impact	No	No	No	N/A
e) Involve other changes in the existing environment which, due to their location or nature, could result in conversion of Farmland, to non-agricultural use or conversion of forest land to non-forest use?	No Impact	No	No	No	N/A

DISCUSSION

The previously adopted IS/MND determined that the Proposed Project would have no impacts on agriculture and forestry resources. The proposed revisions to the Project, as described in Section 2.2 - Project Description would be located within the DWR right-of-way and MWA property in unincorporated San Bernardino County, within the Area of Potential Effect (APE) previously evaluated for the Oeste Demonstration Project in the prior IS/MND.

According to the California Department of Conservation Farmland Mapping and Monitoring Program, the Project site is identified as Grazing Land. Therefore, there would be no potential impacts associated with conversion of Prime Farmland, Unique Farmland, or Farmland of Statewide Importance (Farmland), as shown on the maps prepared pursuant to the Farmland Mapping and Monitoring Program of the California Resources Agency, to nonagricultural use, and no mitigation would be required. The additional Project components (recharge basin, permanent turnout, traveling screen system, access road, pipeline, and supporting facilities including a vacuum pump system, electrical building, concrete vaults, and three monitoring wells) would not result in impacts to agriculture and forestry resources beyond what was analyzed in the original IS/MND. Therefore, the Project would continue to have no impacts on agriculture and forestry.

MITIGATION MEASURES

The Project, as presented in the adopted IS/MND, would have no impacts to farmland conversion, zoning, forest land, or timber land. Revisions to the Project, as presented in this Supplemental IS/MND, would have no new or substantially more severe impacts to Agriculture and Forestry Resources. No mitigation measures apply.

CONCLUSION

No Impact (same as adopted IS/MND).

3.3 AIR QUALITY

Issues	Adopted IS/MND Conclusion	Do Proposed Changes Require Major Revisions to the Adopted IS/MND?	Do New Circumstances Require Major Revisions to the Adopted IS/MND?	Any New Information Resulting in New or Substantially More Severe Significant Impacts?	Do Adopted IS/MND Mitigation Measures Address and/or Resolve Impacts?
AIR QUALITY. Would the Project:					
a) Conflict with or obstruct implementation of the applicable air quality plan?	Less Than Significant Impact	No	No	No	N/A
b) Result in a cumulatively considerable net increase of any criteria pollutant for which the Project region is non-attainment under an applicable federal or state ambient air quality standard?	Less Than Significant with Mitigation Incorporated	No	No	No	Yes
c) Expose sensitive receptors to substantial pollutant concentrations?	Less Than Significant Impact	No	No	No	N/A
d) Result in other emissions (such as those leading to odors) adversely affecting a substantial number of people?	Less Than Significant Impact	No	No	No	N/A

DISCUSSION

The previously adopted IS/MND determined that the Proposed Project would have a less than significant impact on air quality with mitigation incorporated. The proposed revisions to the Project, as described in Section 2.2 – Project Description, would be located within the DWR right-of-way and MWA property in unincorporated San Bernardino County, within the Area of Potential Effect (APE) previously evaluated for the Oeste Demonstration Project in the prior IS/MND.

The air quality analysis prepared for the previously adopted IS/MND determined that the Proposed Project would not exceed daily or annual regional thresholds established by the Mojave Desert Air Quality Management District (MDAQMD) for either construction or operational emissions; indeed, emissions estimates calculated by the California Emissions Estimator Model (CalEEMod) Version 2022.1 were not even remotely close to established thresholds.

Given that the proposed improvements would run off electrical power, on-site emissions generated by operation of the turnout, traveling screen system, pipeline, and supporting facilities would be negligible and well below established air emission thresholds. Moreover, the MDAQMD rules and regulations identified in the original IS/MND pertaining to the original project description also apply to the additional improvements being proposed. As such, the proposed improvements would not result in a significant increase in impacts beyond what was analyzed in the original IS/MND. Therefore, the Project would continue to have less than significant impacts related to applicable air quality plans, sensitive receptors, and odors.

With respect to cumulative air quality impacts, The Mojave Desert Air Basin (MDAB) has been designated by the EPA as a non-attainment area for ozone (O3) and suspended particulates (PM10). Currently, the Basin is in attainment with the ambient air quality standards for carbon monoxide (CO), lead, sulfur dioxide (SO2), nitrogen dioxide (NO2) and particulate matter (PM2.5). The MDAQMD also has developed regulatory standards for criteria pollutants that are considered pre-cursors to Ozone, PM10, and PM2.5 production. These include CO, nitrogen dioxide (NO2), sulfur dioxide (SO2). The previously adopted IS/MND determined that the Proposed Project would result in short-term emissions from construction associated with site grading/preparation but would not exceed applicable thresholds. Nonetheless, to ensure that construction emissions and dust would not exceed the MDAQMD standards, **Mitigation Measure MM AIR-1**, proposed in the previously adopted IS/MND for preparation of a Dust Control Plan, would continue to be required. No new additional mitigation measures are required.

MITIGATION MEASURES

The Project, as presented in the adopted IS/MND, would have impacts that are Less Than Significant related to conflicts with applicable air quality plans, exposure of sensitive receptors to pollutants, and adverse effects from emissions. No mitigation measures apply.

The Project would have impacts that are Less Than Significant with Mitigation Incorporated related to cumulatively considerable net increases of criteria pollutants for which the Project region is non-attainment. Compliance with **Mitigation Measure MM AIR-1** would ensure that construction emissions would not exceed MDAQMD's thresholds.

The Proposed Project, as presented in this Supplemental IS/MND, would have no new or substantially more severe impacts to Air Quality. Compliance with **Mitigation Measure AIR-1** would continue to ensure that construction emissions would not exceed MDAQMD's thresholds.

CONCLUSION

Less Than Significant with Mitigation Incorporated (same as adopted IS/MND).

3.4 BIOLOGICAL RESOURCES

Issues	Adopted IS/MND Conclusion	Do Proposed Changes Require Major Revisions to the Adopted IS/MND?	Do New Circumstances Require Major Revisions to the Adopted IS/MND?	Any New Information Resulting in New or Substantially More Severe Significant Impacts?	Do Adopted IS/MND Mitigation Measures Address and/or Resolve Impacts?
BIOLOGICAL RESOURCES. Would the Project:					
a) Have a substantial adverse effect, either directly or through habitat modifications, on any species identified as a candidate, sensitive, or special status species in local or regional plans, policies, or regulations, or by the California Department of Fish and Game or U.S. Fish and Wildlife Service?	Less Than Significant with Mitigation Incorporated	No	No	No	Yes
b) Have a substantial adverse effect on any riparian habitat or other sensitive natural community identified in local or regional plans, policies, regulations or by the California Department of Fish and Game or U.S. Fish and Wildlife Service?	No Impact	No	No	No	N/A
c) Have a substantial adverse effect on state or federally protected wetlands (including, but not limited to, marsh, vernal pool, coastal, etc.) through direct removal, filling, hydrological interruption, or other means?	No Impact	No	No	No	N/A
d) Interfere substantially with the movement of any native resident or migratory fish or wildlife species or with established native resident or migratory wildlife corridors, or impede the use of native wildlife nursery sites?	Less Than Significant with Mitigation Incorporated	No	No	No	Yes
e) Conflict with any local policies or ordinances protecting biological resources, such as a tree preservation policy or ordinance?	Less Than Significant Impact	No	No	No	N/A
f) Conflict with the provisions of an adopted Habitat Conservation Plan, Natural Community Conservation Plan, or other approved local, regional, or state habitat conservation plan	No Impact	No	No	No	N/A

DISCUSSION

The previously adopted IS/MND determined that the Proposed Project would have a less than significant impact on biological resources with mitigation incorporated. The proposed revisions to the Project, as described in Section 2.2 – Project Description, would be located within the DWR right-of-way and MWA property in unincorporated San Bernardino County, within the Area of Potential Effect (APE) previously evaluated for the Oeste Demonstration Project in the prior IS/MND.

The vacant Project Site supports two plant communities: creosote bush scrub and Joshua tree woodland. There is no riparian habitat or sensitive natural community identified in local or regional plans, policies, regulations or by the California Department of Fish and Game or U.S. Fish and Wildlife Service present on the Project Site. There are two riverine resources present: La Montaine Creek, which flows through the middle of the Project site; and one unnamed feature that extends from the box culvert under the California Aqueduct; however, these drainage features do not support riparian vegetation or suitable habitat for special-status wildlife species and do not function as a wildlife movement corridor or linkage. The drainage features onsite have been effectively cut off by the California Aqueduct and the residential community south of the aqueduct, no longer convey upstream water flows, and are not considered jurisdictional.

As noted above, improvements described in this Supplemental IS/MND would be constructed within the footprint/areas that were previously evaluated under the original IS/MND. The Project would not be located within an adopted Habitat Conservation Plan, Natural Community Conservation Plan, or other approved local, regional, or state Habitat Conservation Plan. Therefore, impacts to local, regional, or state habitat conservation plans are not expected to occur from development of the Proposed Project, and mitigation is not required.

The Project Site does not function as a major wildlife movement corridor or linkage. As such, implementation of the Proposed Project is not expected to have a significant impact on wildlife movement opportunities or prevent local wildlife movement through the area since there is ample habitat adjacent to the Project site to support wildlife movement opportunities. However, based on habitat requirements for specific species and the availability and quality of on-site habitats, the Proposed Project Site has a moderate potential to provide suitable habitat for Costa's hummingbird (*Calypte costae*), and loggerhead shrike (*Lanius ludocivianus*). Additionally, the vegetation on site and adjacent trees may attract birds that are protected by the Migratory Bird Treaty Act (MBTA). As such, implementation of **Mitigation Measure MM-BIO-3** to perform a pre-construction nesting bird survey is required to reduce potential impacts to nesting birds protected by the MBTA.

Certain desert plant species (i.e. silver cholla [*Cylindropuntia echinocarpa*]) Joshua trees and Mojave yuccas (*Yucca schidigera*) are regulated pursuant to Section 88.01.060 of the San Bernardino County Development Code and Section 80073 of the California Desert Native Plant Act. In addition to the CDFW Incidental Take Permit that MWA has already obtained for removal of the western Joshua Tree, MWA would be required to obtain a Tree or Plant Removal Permit from the County of San Bernardino prior to removal of any regulated tree or plant, as described in the previously adopted IS/MND. No additional mitigation is required.

MITIGATION MEASURES

The Project, as presented in the adopted IS/MND, would have no impacts to riparian habitat or other sensitive natural communities, state or federally protected wetlands, or an adopted habitat conservation plan. The Project would have impacts that are Less Than Significant related to conflicts with any local policies or ordinances protecting biological resources. No mitigation measures apply.

The Project would have impacts that are Less Than Significant with Mitigation Incorporated related to species identified as a candidate, sensitive, or special status species. Similarly, impacts are Less Than Significant with Mitigation Incorporated related to species interference or movement. Compliance with **Mitigation Measures MM-BIO-1, MM-BIO-2, and MM-BIO-3** would reduce potentially significant impacts of the Proposed Project associated with Biological Resources to Less Than Significant.

The Proposed Project, as presented in this Supplemental IS/MND, would have no new or substantially more severe impacts to Biological Resources. Compliance with **Mitigation Measures MM-BIO-1, MM-BIO-2, and MM-BIO-3** would continue to ensure that potential impacts to desert tortoise, Western Joshua Trees, and nesting birds are Less Than Significant.

CONCLUSION

Less Than Significant with Mitigation Incorporated (same as adopted IS/MND).

3.5 CULTURAL RESOURCES

Issues	Adopted IS/MND Conclusion	Do Proposed Changes Require Major Revisions to the Adopted IS/MND?	Do New Circumstances Require Major Revisions to the Adopted IS/MND?	Any New Information Resulting in New or Substantially More Severe Significant Impacts?	Do Adopted IS/MND Mitigation Measures Address and/or Resolve Impacts?
CULTURAL RESOURCES. Would the Project:					
a) Cause a substantial adverse change in the significance of a historical resource pursuant to § 15064.5?	Less Than Significant Impact	No	No	No	N/A
b) Cause a substantial adverse change in the significance of an archaeological resource pursuant to § 15064.5?	Less Than Significant with Mitigation Incorporated	No	No	No	Yes
c) Disturb any human remains, including those interred outside of dedicated cemeteries?	Less Than Significant with Mitigation Incorporated	No	No	No	Yes

DISCUSSION

The previously adopted IS/MND determined that the Proposed Project would have a less than significant impact on cultural resources with mitigation incorporated. The proposed revisions to the Project, as described in Section 2.2 – Project Description, would be located within the DWR right-of-way and MWA property in unincorporated San Bernardino County, within the Area of Potential Effect (APE) previously evaluated for the Oeste Demonstration Project in the prior IS/MND.

The cultural resources records search conducted for the Project revealed that the California Aqueduct (East Branch), which was previously recorded into the California Historical Resources Inventory as Site 36-021351, was the only potential “historical resource” encountered within or adjacent to the Project area. Constructed in 1966-1973 as a part of the backbone of the massive California State Water Project, the aqueduct traverses roughly 200 feet south of the main Project site and across the southwestern end of the pipeline alignment.

As discussed in the previously adopted IS/MND, the California Aqueduct (East Branch) as a whole has been determined eligible for listing in the California Register of Historical Resources and thus meets the definition of a “historical resource” under CEQA provisions. The Proposed Project, including revisions to the Project as described herein, would not cause a substantial adverse change in the significance, integrity, and overall character of the canal because most of the Project would continue to occur outside of the California Aqueduct. The infrastructure proposed for the California Aqueduct would not significantly alter its current design, and many other facilities, such as the one similar to the Proposed Project, have occurred along the California Aqueduct (East Branch).

As noted above, improvements described in this Supplemental IS/MND would be constructed within the footprint/areas that were previously evaluated under the original IS/MND. No potential markers of prehistoric human activities have been found on the Project Site.

MWA consulted with tribal entities in accordance with AB52 during preparation of the previously adopted IS/MND. None of the tribal entities responded that there were potentially important Native American sites in the Project area. However, to protect unknown potential tribal archaeological resources. **Mitigation Measures CR-1, CR-2, and CR-3** would be implemented. These measures are designed to train construction personnel as well as set out the guidance for an unanticipated find. Implementation of **Mitigation Measures CR-1, CR-2, and CR-3** would reduce potential impacts to unanticipated discoveries of archaeological resources to less than significant.

The Project site does not include a formal cemetery or any archaeological resources that might contain interred human remains. However, to protect unanticipated tribal and human archaeological resources, specifically human remains and unknown Native American burial sites, **Mitigation Measure CR-4** would continue to be implemented.

MITIGATION MEASURES

The Project, as presented in the adopted IS/MND, would have impacts that are Less Than Significant related to an adverse change in the significance of a historical resource. No mitigation measures apply.

The Project would have impacts that are Less Than Significant with Mitigation Incorporated related to an adverse change in the significance of an archaeological resource. Similarly, impacts are Less Than Significant with Mitigation Incorporated related to the potential disturbance of human remains. Compliance with **Mitigation Measures CR-1, CR-2, CR-3, and CR-4** would reduce potentially significant impacts of the Proposed Project associated with Cultural Resources to Less Than Significant.

The Proposed Project, as presented in this Supplemental IS/MND, would have no new or substantially more severe impacts to Cultural Resources. Compliance with **Mitigation Measures CR-1, CR-2, CR-3, and CR-4** would continue to ensure that Worker Environmental Awareness Program (WEAP) training is in place during construction, and that potential impacts to archaeological resources and human remains are Less Than Significant.

CONCLUSION

Less Than Significant with Mitigation Incorporated (same as adopted IS/MND).

3.6 ENERGY

Issues	Adopted IS/MND Conclusion	Do Proposed Changes Require Major Revisions to the Adopted IS/MND?	Do New Circumstances Require Major Revisions to the Adopted IS/MND?	Any New Information Resulting in New or Substantially More Severe Significant Impacts?	Do Adopted IS/MND Mitigation Measures Address and/or Resolve Impacts?
ENERGY. Would the Project:					
a) Result in potentially significant environmental impact due to wasteful, inefficient, or unnecessary consumption of energy resources, during Project construction or operation?	Less Than Significant Impact	No	No	No	N/A
b) Conflict with or obstruct a state or local plan for renewable energy or energy efficiency?	Less Than Significant Impact	No	No	No	N/A

DISCUSSION

The previously adopted IS/MND determined that the Proposed Project would have less than significant impacts on energy resources. The proposed revisions to the Project, as described in Section 2.2 - Project Description, would be located within the DWR right-of-way and MWA property in unincorporated San Bernardino County, within the Area of Potential Effect (APE) previously evaluated for the Oeste Demonstration Project in the prior IS/MND.

Information from the CalEEMod 2020.4.0 Daily and Annual Outputs contained in the air quality and greenhouse gas analyses were utilized to determine the potential energy demand for Project as presented in the previously adopted IS/MND. The CalEEMod outputs detail Project-related construction equipment, transportation energy demands, and facility energy demands. Using the CalEEMod data input, the Project’s construction phase would consume electricity and fossil fuels as a single energy demand, that is, once construction is completed their use would cease.

Construction of proposed revisions to the Project would continue to require the typical use of energy resources. There are no unusual Project characteristics or construction processes associated with Project revisions that would require the use of equipment that would be noticeably more energy intensive than was anticipated for construction of the Project as originally proposed, or equipment that would not conform to current emissions standards (and related fuel efficiencies).

Project construction is required to comply with applicable CARB regulations regarding retrofitting, repowering, or replacement of diesel off-road construction equipment. Additionally, CARB has adopted the Airborne Toxic Control Measure to limit heavy-duty diesel motor vehicle idling in order to reduce public exposure to diesel particulate matter and other Toxic Air Contaminants. Compliance with these measures would result in a more efficient use of construction-related energy and would minimize or eliminate wasteful or unnecessary consumption of energy. Idling restrictions and the use of newer engines and equipment would result in less fuel combustion and energy consumption.

Additionally, as required by California Code of Regulations Title 13, Motor Vehicles, Section 2449(d)(3) Idling, limits idling times of construction vehicles to no more than five minutes, thereby minimizing or eliminating unnecessary and wasteful consumption of fuel due to unproductive idling of construction equipment. Therefore, Project compliance with State regulations would reduce construction impacts to less than significant and no mitigation is required.

With respect to operational emissions, the largest source of operational energy use would be vehicle operation of the Proposed Project’s employees, and this would be unaffected by the proposed revisions to the Project. Moreover, given that the proposed revisions to the Project would run off electrical power, on-site emissions generated by operation of the turnout, traveling screen system, pipeline, and supporting facilities (including a vacuum pump system, electrical building, and two

concrete vaults) would be negligible and well below established air emission thresholds. Moreover, the MDAQMD rules and regulations identified in the original IS/MND pertaining to the original Project description also apply to the additional improvements being proposed. As such, the proposed improvements would not result in a significant increase in impacts beyond what was analyzed in the original IS/MND, nor would the improvements conflict with or obstruct a state or local plan for renewable energy or energy efficiency. Therefore, the Project would continue to have less than significant impacts related to energy resources.

MITIGATION MEASURES

The Project, as presented in the adopted IS/MND, would have impacts that are Less Than Significant related to wasteful, inefficient, or unnecessary consumption of energy resources, as well as conflict or obstruction of a state or local energy plan. No mitigation measures apply.

The Proposed Project, as presented in this Supplemental IS/MND, would have no new or substantially more severe impacts to Energy. No mitigation measures apply.

CONCLUSION

Less Than Significant Impact (same as adopted IS/MND).

3.7 GEOLOGY AND SOILS

Issues	Adopted IS/MND Conclusion	Do Proposed Changes Require Major Revisions to the Adopted IS/MND?	Do New Circumstances Require Major Revisions to the Adopted IS/MND?	Any New Information Resulting in New or Substantially More Severe Significant Impacts?	Do Adopted IS/MND Mitigation Measures Address and/or Resolve Impacts?
GEOLOGY AND SOILS. Would the Project:					
a) Directly or indirectly cause potential substantial adverse effects, including the risk of loss, injury, or death involving:					
i. Rupture of a known earthquake fault, as delineated on the most recent Alquist-Priolo Earthquake Fault Zoning Map, issued by the State Geologist for the area or based on other substantial evidence of a known fault? Refer to Division of Mines and Geology Special Publication 42.	Less Than Significant Impact	No	No	No	N/A
ii. Strong seismic ground shaking?	Less Than Significant Impact	No	No	No	N/A
iii. Seismic-related ground failure, including liquefaction?	No Impact	No	No	No	N/A
iv. Landslides?	No Impact	No	No	No	N/A
b) Result in substantial soil erosion or the loss of topsoil?	Less Than Significant Impact	No	No	No	N/A
c) Be located on a geologic unit or soil that is unstable, or that would become unstable as a result of the Project, and potentially result in on- or off-site landslide, lateral spreading, subsidence, liquefaction or collapse?	Less Than Significant Impact	No	No	No	N/A
d) Be located on expansive soil, as defined in Table 18-1-B of the Uniform Building Code (1994), creating substantial direct or indirect risks to life or property?	Less Than Significant Impact	No	No	No	N/A
e) Have soils incapable of adequately supporting the use of septic tanks or alternative wastewater disposal systems where sewers are not available for the disposal of wastewater?	No Impact	No	No	No	N/A
f) Directly or indirectly destroy a unique paleontological resource or site or unique geologic feature?	Less Than Significant with Mitigation Incorporated	No	No	No	Yes

DISCUSSION

The previously adopted IS/MND determined that the Proposed Project would have a less than significant impact on geology and soils with mitigation incorporated. The proposed revisions to the Project, as described in Section 2.2 – Project Description, would be located within the DWR right-of-way and MWA property in unincorporated San Bernardino County, within the Area of Potential Effect (APE) previously evaluated for the Oeste Demonstration Project in the prior IS/MND.

As discussed in the previously adopted IS/MND, the Project would have less than significant impacts or no impacts related to risk of loss, injury, or death involving rupture of a known earthquake fault, ground shaking, ground failure including liquefaction, and landslides. The proposed revisions to the Project would not affect this conclusion, as the revisions would not substantially increase the number of people onsite during construction or operation, nor introduce related risks.

During Project construction when soils are exposed, temporary soil erosion may occur, which could be exacerbated by rainfall. Impacts associated with soil erosion or loss of topsoil would continue to be less than significant, as the Project would be required to comply with the General Storm Water Permit for Construction Activity from the State Water Resources Control Board (SWRCB), which would include the implementation of a SWPPP and associated BMPs.

As noted in the previously adopted IS/MND, there is no potential for landslides and low potential for liquefaction on site. Similarly, the onsite near surface soils that would underly the proposed facility are classified by the USDA as primarily sandy type soils (young alluvial deposits and eolian sand), which have a low shrink-swell potential. Therefore, impacts of the revised Project regarding expansive soils would continue to be less than significant, and no mitigation is required.

The revised Project does not propose to install septic tanks or alternative wastewater disposal systems.

With respect to paleontological resources, the paleontological report prepared for the previously adopted IS/MND concluded that the Proposed Project's potential to impact significant, nonrenewable paleontological resources appears to be low in the surface soils but high in the older native alluvium beneath the surface soils. The Proposed Project is a water recharge basin where excavations could reach greater than 10 feet in depth for the basins and reach substantially greater depths for drilling the monitoring wells. Excavation and drilling may therefore reach paleontologically sensitive Pleistocene or earlier soils subsurface. The Proposed Project revisions introduce no new impacts to paleontological resources; however, due to the variability and unknown paleontological sensitivity of the Project Site, **Mitigation Measure GEO-1** would continue to be required to manage unanticipated discoveries of paleontological resources. Implementation of **Mitigation Measure GEO-1** would reduce potential impacts to unanticipated discoveries of paleontological resources to less than significant.

MITIGATION MEASURES

The Project, as presented in the adopted IS/MND, would have no impacts to seismic-related ground failure, landslides, or soil stability. The Project would have impacts that are Less Than Significant related to earthquake fault rupture, unstable soil, or expansive soil. No mitigation measures apply.

The Project would have impacts that are Less Than Significant with Mitigation Incorporated related to paleontological resources or unique geologic features. Compliance with **Mitigation Measure GEO-1** would reduce potentially significant impacts of the Proposed Project associated with paleontological resources to Less Than Significant.

The Proposed Project, as presented in this Supplemental IS/MND, would have no new or substantially more severe impacts to Geology and Soils. Compliance with **Mitigation Measure GEO-1** would continue to ensure that potential impacts to paleontological resources are Less Than Significant.

CONCLUSION

Less Than Significant with Mitigation Incorporated (same as adopted IS/MND).

3.8 GREENHOUSE GAS EMISSIONS

Issues	Adopted IS/MND Conclusion	Do Proposed Changes Require Major Revisions to the Adopted IS/MND?	Do New Circumstances Require Major Revisions to the Adopted IS/MND?	Any New Information Resulting in New or Substantially More Severe Significant Impacts?	Do Adopted IS/MND Mitigation Measures Address and/or Resolve Impacts?
GREENHOUSE GAS EMISSIONS. Would the Project:					
a) Generate greenhouse gas emissions, either directly or indirectly, that may have a significant impact on the environment?	Less Than Significant Impact	No	No	No	N/A
b) Conflict with an applicable plan, policy or regulation adopted for the purpose of reducing the emissions of greenhouse gases?	Less Than Significant Impact	No	No	No	N/A

DISCUSSION

The previously adopted IS/MND determined that the Proposed Project would have a less than significant impact on greenhouse gas emissions. The proposed revisions to the Project, as described in Section 2.2 – Project Description, would be located within the DWR right-of-way and MWA property in unincorporated San Bernardino County, within the Area of Potential Effect (APE) previously evaluated for the Oeste Demonstration Project in the prior IS/MND.

The greenhouse gas emissions analysis prepared for the previously adopted IS/MND determined that the Proposed Project’s total construction emissions of CO₂e amortized over a period of 30 years are estimated at approximately 16 metric tons (MT) of CO₂e per year. Operational emissions were estimated at 16.86 MT CO₂e per year, well below the San Bernardino County screening threshold of 3,000 MT CO₂e per year. The Project’s total GHG emissions would also not exceed the MDAQMD annual threshold of 100,000 MT CO₂e or the MDAQMD daily threshold of 548,000 pounds of CO₂e.

Given the nature of Proposed Project modifications, on-site emissions generated by operation of the turnout, traveling screen system, pipeline, and supporting facilities would be negligible. Moreover, the MDAQMD rules and regulations identified in the original IS/MND pertaining to the original Project description also apply to the additional improvements being proposed. As such, the proposed improvements would not result in a significant increase in impacts beyond what was analyzed in the original IS/MND. The Project would continue to have less than significant impacts related to applicable plans, policies, or regulations associated with greenhouse gases.

MITIGATION MEASURES

The Project, as presented in the adopted IS/MND, would have impacts that are Less Than Significant related to greenhouse gas emissions generation, as well as conflict with an applicable plan, policy, or regulation intended to reduce emissions of greenhouse gases. No mitigation measures apply.

The Proposed Project, as presented in this Supplemental IS/MND, would have no new or substantially more severe impacts to Greenhouse Gases. No mitigation measures apply.

CONCLUSION

Less Than Significant Impact (same as adopted IS/MND).

3.9 HAZARDS AND HAZARDOUS MATERIALS

Issues	Adopted IS/MND Conclusion	Do Proposed Changes Require Major Revisions to the Adopted IS/MND?	Do New Circumstances Require Major Revisions to the Adopted IS/MND?	Any New Information Resulting in New or Substantially More Severe Significant Impacts?	Do Adopted IS/MND Mitigation Measures Address and/or Resolve Impacts?
HAZARDS AND HAZARDOUS MATERIALS.					
Would the Project:					
a) Create a significant hazard to the public or the environment through the routine transport, use, or disposal of hazardous materials?	Less Than Significant Impact	No	No	No	N/A
b) Create a significant hazard to the public or the environment through reasonably foreseeable upset and accident conditions involving the release of hazardous materials into the environment?	Less Than Significant Impact	No	No	No	N/A
c) Emit hazardous emissions or handle hazardous or acutely hazardous materials, substances, or waste within one-quarter mile of an existing or proposed school?	No Impact	No	No	No	N/A
d) Be located on a site which is included on a list of hazardous materials sites compiled pursuant to Government Code § 65962.5 and, as a result, would it create a significant hazard to the public or the environment?	No Impact	No	No	No	N/A
e) For a Project located within an airport land use plan or, where such a plan has not been adopted, within two miles of a public airport or public use airport, would the Project result in a safety hazard or excessive noise for people residing or working in the Project area?	No Impact	No	No	No	N/A
f) Impair implementation of or physically interfere with an adopted emergency response plan or emergency evacuation plan?	No Impact	No	No	No	N/A
g) Expose people or structures, either directly or indirectly, to a significant risk of loss, injury or death involving wildland fires?	No Impact	No	No	No	N/A

DISCUSSION

The previously adopted IS/MND determined that the Proposed Project would have a less than significant impact on hazards and hazardous materials. The proposed revisions to the Project, as described in Section 2.2 – Project Description, would be located within the DWR right-of-way and MWA property in unincorporated San Bernardino County, within the Area of Potential Effect (APE) previously evaluated for the Oeste Demonstration Project in the prior IS/MND.

As discussed in the previously adopted IS/MND, the Project would have less than significant impacts related to the routine transport, use, or disposal of hazardous materials. The proposed revisions to the Project would not affect this conclusion, as the need for such materials would not substantially increase in quantity, and would continue to be handled and stored in compliance with all applicable federal, State and local laws. Similarly, there would be no change in reasonably foreseeable upset and accident conditions involving the release of hazardous materials into the environment.

The previously adopted IS/MND identified no impacts related to schools, designated hazardous materials sites, airports, emergency response and evacuation plans, or wildland fires. The Proposed Project improvements introduce no new impacts related to these topics, and there would continue to be no impacts.

MITIGATION MEASURES

The Project, as presented in the adopted IS/MND, would have no impacts related to hazardous emissions or materials, the creation of significant hazards or excessive noise, emergency response or evacuation plans, or expose people to risks involving wildland fires. The Project would have impacts that are Less Than Significant related to the routine transport, use, or disposal of hazardous materials, or reasonably foreseeable upset and accident conditions involving the release of hazardous materials into the environment. No mitigation measures apply.

The Proposed Project, as presented in this Supplemental IS/MND, would have no new or substantially more severe impacts to Hazards and Hazardous Materials. No mitigation measures apply.

CONCLUSION

Less Than Significant Impact (same as adopted IS/MND).

3.10 HYDROLOGY AND WATER QUALITY

Issues	Adopted IS/MND Conclusion	Do Proposed Changes Require Major Revisions to the Adopted IS/MND?	Do New Circumstances Require Major Revisions to the Adopted IS/MND?	Any New Information Resulting in New or Substantially More Severe Significant Impacts?	Do Adopted IS/MND Mitigation Measures Address and/or Resolve Impacts?
HYDROLOGY AND WATER QUALITY.					
Would the Project:					
a) Violate any water quality standards or waste discharge requirements or otherwise substantially degrade surface or ground water quality?	Less Than Significant Impact	No	No	No	N/A
b) Substantially decrease groundwater supplies or interfere substantially with groundwater recharge such that the Project may impede sustainable groundwater management of the basin?	Less Than Significant Impact	No	No	No	N/A
c) Substantially alter the existing drainage pattern of the site or area, including through the alteration of the course of a stream or river or through the addition of impervious surfaces, in a manner which would:					
i. result in a substantial erosion or siltation on- or off-site;	Less Than Significant Impact	No	No	No	N/A
ii. substantially increase the rate or amount of surface runoff in a manner which would result in flooding on- or offsite;	No Impact	No	No	No	N/A
iii. create or contribute runoff water which would exceed the capacity of existing or planned stormwater drainage systems or provide substantial additional sources of polluted runoff; or	No Impact	No	No	No	N/A
iv. impede or redirect flood flows?	No Impact	No	No	No	N/A
d) In flood hazard, tsunami, or seiche zones, risk release of pollutants due to Project inundation?	No Impact	No	No	No	N/A
e) Conflict with or obstruct implementation of a water quality control plan or sustainable groundwater management plan?	Less Than Significant Impact	No	No	No	N/A

DISCUSSION

The previously adopted IS/MND determined that the Proposed Project would have a less than significant impact on hydrology and water quality. The proposed revisions to the Project, as described in Section 2.2 – Project Description, would be located within the DWR right-of-way and MWA property in unincorporated San Bernardino County, within the Area of Potential Effect (APE) previously evaluated for the Oeste Demonstration Project in the prior IS/MND.

As discussed in the previously adopted IS/MND, the Project would have less than significant impacts related to water quality standards or waste discharge, as the Project is required to obtain coverage of the Construction General Permit (CGP) by developing and implementing a Storm Water Pollution Prevention Plan (SWPPP), estimating sediment risk from construction activities to receiving waters, and specifying best management practices (BMPs). During operation, the groundwater quality would improve with the blending of Oeste Sub-basin water and the State Water Project (SWP) water. The previously adopted IS/MND acknowledged that the Proposed Project is anticipated to generally raise groundwater levels when compared to No Project conditions, creating the same benefit of reduced pumping costs for adjacent private well owners. Overall, impacts to water quality, waste discharge, groundwater quality, and supply would be less than significant. The Proposed Project improvements would not affect this conclusion, as CGP, SWPPP, and BMP requirements would continue to apply.

The previously adopted IS/MND identified less than significant impacts related to erosion or siltation onsite or offsite, as compliance with the SWPPP would sufficiently address any wind driven soil erosion and loss of topsoil during construction grading activities. Similar impacts from the Proposed Project improvements would continue to be less than significant.

No impacts were identified in the previously adopted IS/MND related to flooding from surface water runoff, polluted runoff, or the direction of flood flows. As the Proposed Project improvements do not introduce impervious surfaces other than a compacted gravel access road, the Project site does not contain any natural drainages or waterways, and the Project site is not located within any flood hazard areas, there would continue to be no impacts related to these topics. Likewise, FEMA Flood Insurance Rate Maps indicates that the Project site is not located within any flood hazard areas. The Project Site is inland, more than 70 miles northeast of the Pacific Ocean, and is not subject to tsunami hazards. The DWR canal would not reasonably be expected to be subject to a seiche.

The Project would continue to have less than significant impacts related to water quality control plans or sustainable groundwater management plans.

MITIGATION MEASURES

The Project, as presented in the adopted IS/MND, would have no impacts related to surface water runoff and flooding, stormwater drainage system capacity, flood flows, or risk of release of pollutants due to Project inundation. The Project would have impacts that are Less Than Significant related to degradation of surface or ground water quality, groundwater supplies or recharge, erosion or siltation, and the implementation of water quality or groundwater management plans. No mitigation measures apply.

The Proposed Project, as presented in this Supplemental IS/MND, would have no new or substantially more severe impacts to Hydrology and Water Quality. No mitigation measures apply.

CONCLUSION

Less Than Significant Impact (same as adopted IS/MND).

3.11 LAND USE AND PLANNING

Issues	Adopted IS/MND Conclusion	Do Proposed Changes Require Major Revisions to the Adopted IS/MND?	Do New Circumstances Require Major Revisions to the Adopted IS/MND?	Any New Information Resulting in New or Substantially More Severe Significant Impacts?	Do Adopted IS/MND Mitigation Measures Address and/or Resolve Impacts?
LAND USE AND PLANNING. Would the Project:					
a) Physically divide an established community?	No Impact	No	No	No	N/A
b) Cause a significant environmental impact due to a conflict with any land use plan, policy, or regulation adopted for the purpose of avoiding or mitigating an environmental effect?	Less Than Significant Impact	No	No	No	N/A

DISCUSSION

The previously adopted IS/MND determined that the Proposed Project would have a less than significant impact on land use and planning. The proposed revisions to the Project, as described in Section 2.2 – Project Description, would be located within the DWR right-of-way and MWA property in unincorporated San Bernardino County, within the Area of Potential Effect (APE) previously evaluated for the Oeste Demonstration Project in the prior IS/MND. The Project is consistent with the surrounding land uses, and there are no impacts with regard to the division of an established community.

The land use designation by the County of San Bernadino is RL – Rural Living. The San Bernardino County Development Code Section 82.02.040 exempts certain public utilities, including water, from having to obtain a permit or land use approvals. The Proposed Project improvements would be constructed by the MWA, a public agency, and consists of a groundwater recharge basin to serve customers of the Oeste subbasin, and/or provide for water reliability of the Oeste subbasin. The original Project, as well as the proposed improvements described herein, would not cause a significant environmental impact due to a conflict with any land use plan, policy, or regulation adopted for the purpose of avoiding or mitigating an environmental effect.

MITIGATION MEASURES

The Project, as presented in the adopted IS/MND, would have no impacts related to physically dividing an established community. The Project would have impacts that are Less Than Significant related to a conflict with a land use plan, policy, or regulation. No mitigation measures apply.

The Proposed Project, as presented in this Supplemental IS/MND, would have no new or substantially more severe impacts to Land Use and Planning. No mitigation measures apply.

CONCLUSION

Less Than Significant Impact (same as adopted IS/MND).

3.12 MINERAL RESOURCES

Issues	Adopted IS/MND Conclusion	Do Proposed Changes Require Major Revisions to the Adopted IS/MND?	Do New Circumstances Require Major Revisions to the Adopted IS/MND?	Any New Information Resulting in New or Substantially More Severe Significant Impacts?	Do Adopted IS/MND Mitigation Measures Address and/or Resolve Impacts?
MINERAL RESOURCES. Would the Project:					
a) Result in the loss of availability of a known mineral resource that would be a value to the region and the residents of the state?	No Impact	No	No	No	N/A
b) Result in the loss of availability of a locally important mineral resource recovery site delineated on a local general plan, specific plan or other land use plan?	No Impact	No	No	No	N/A

DISCUSSION

The previously adopted IS/MND determined that the Proposed Project would have no impact on mineral resources. The proposed revisions to the Project, as described in Section 2.2 – Project Description, would be located within the DWR right-of-way and MWA property in unincorporated San Bernardino County, within the Area of Potential Effect (APE) previously evaluated for the Oeste Demonstration Project in the prior IS/MND.

The Project Site is designated Mineral Resource Zone (MRZ) 3a, which is defined as areas containing known or inferred mineral occurrences of undetermined mineral resource significance. Development of the Project Site, including the proposed improvements, would have no impacts on the availability of known mineral resources in the surrounding area, nor a locally important mineral resource recovery site delineated on a local plan.

MITIGATION MEASURES

The Project, as presented in the adopted IS/MND, would have no impacts related to loss of availability of a known mineral resource, or loss of availability of a locally important mineral resource recovery site. No mitigation measures apply.

The Proposed Project, as presented in this Supplemental IS/MND, would have no new or substantially more severe impacts to Mineral Resources. No mitigation measures apply.

CONCLUSION

No Impact (same as adopted IS/MND).

3.13 NOISE

Issues	Adopted IS/MND Conclusion	Do Proposed Changes Require Major Revisions to the Adopted IS/MND?	Do New Circumstances Require Major Revisions to the Adopted IS/MND?	Any New Information Resulting in New or Substantially More Severe Significant Impacts?	Do Adopted IS/MND Mitigation Measures Address and/or Resolve Impacts?
NOISE. Would the Project:					
a) Generation of a substantial temporary or permanent increase in ambient noise levels in the vicinity of the Project in excess of standards established in the local general plan or noise ordinance, or applicable standards of other agencies?	Less Than Significant Impact	No	No	No	N/A
b) Generation of excessive groundborne vibration or groundborne noise levels?	Less Than Significant Impact	No	No	No	N/A
c) For a Project located within the vicinity of a private airstrip or an airport land use plan or, where such a plan has not been adopted, within two miles of a public airport or public use airport, would the Project expose people residing or working in the Project area to excessive noise levels?	No Impact	No	No	No	N/A

DISCUSSION

The previously adopted IS/MND determined that the Proposed Project would have a less than significant impact on noise. The proposed revisions to the Project, as described in Section 2.2 – Project Description, would be located within the DWR right-of-way and MWA property in unincorporated San Bernardino County, within the Area of Potential Effect (APE) previously evaluated for the Oeste Demonstration Project in the prior IS/MND.

The proposed improvements would be constructed and operated consistent with the noise standard discussed in the previously adopted IS/MND. Construction activities would follow the County’s General Plan and the Noise Ordinance, which states that construction, repair, demolition, and excavation work must be performed between 7:00 a.m. and 7:00 p.m., except Sundays and Federal holidays. There are no sensitive receptors within 1,000 feet of the Project Site; the closest such receptor is approximately 0.25 west. Impacts would be less than significant, and no mitigation measures are required.

The Proposed Project improvements would not require the use of equipment such as pile drivers, which are known to generate substantial construction vibration levels. The primary vibration sources during construction are likely from a bulldozer or caisson drilling for the monitoring wells, both of which have vibration impacts of 0.089 inches per second peak particle velocity (PPV) at 25 feet which is perceptible but below any risk to architectural damage. Vibration estimates presented in the original IS/MND indicate that vibration would not be perceptible at adjacent land uses during grading of the Project Site and is below any threshold of damage. The Proposed Project improvements introduce no change to that conclusion. Therefore, impacts would continue to be less than significant, and no mitigation is required.

The nearest public airport is the Southern California Logistics Airport, located approximately 7 miles northwest of the Project Site, and which is owned and operated by the Southern California Logistics Airport Authority as part of the City of Victorville. There are multiple small, privately-owned airstrips in the general vicinity of the Proposed Project; however, the Project would not expose people at those airstrips to excessive noise levels.

Project improvements would not expose people residing or working in the Project area to excessive noise levels. There would be no impact, and no mitigation is required.

MITIGATION MEASURES

The Project, as presented in the adopted IS/MND, would have no impacts related to exposing people to excessive noise levels. The Project would have impacts that are Less Than Significant related to a temporary increase in ambient noise levels, and groundborne vibration or noise, during project construction. No mitigation measures apply.

The Proposed Project, as presented in this Supplemental IS/MND, would have no new or substantially more severe impacts to Noise. No mitigation measures apply.

CONCLUSION

Less Than Significant Impact (same as adopted IS/MND).

3.14 POPULATION AND HOUSING

Issues	Adopted IS/MND Conclusion	Do Proposed Changes Require Major Revisions to the Adopted IS/MND?	Do New Circumstances Require Major Revisions to the Adopted IS/MND?	Any New Information Resulting in New or Substantially More Severe Significant Impacts?	Do Adopted IS/MND Mitigation Measures Address and/or Resolve Impacts?
POPULATION AND HOUSING. Would the Project:					
a) Induce substantial unplanned population growth in an area, either directly (for example, by proposing new homes and businesses) or indirectly (for example, through extension of roads or other infrastructure)?	Less Than Significant Impact	No	No	No	N/A
b) Displace substantial numbers of existing people or housing, necessitating the construction of replacement housing elsewhere?	No Impact	No	No	No	N/A

DISCUSSION

The previously adopted IS/MND determined that the Proposed Project would have a less than significant impact on population and housing. The proposed revisions to the Project, as described in Section 2.2 – Project Description, would be located within the DWR right-of-way and MWA property in unincorporated San Bernardino County, within the Area of Potential Effect (APE) previously evaluated for the Oeste Demonstration Project in the prior IS/MND.

As discussed in the previously adopted IS/MND, the Proposed Project is the construction and operation of a groundwater recharge basin for the Oeste subbasin of the MWA. The Project would provide water service reliability for the population that draws from the Oeste subarea, as well as provide water service for future connections consistent with expected population growth. It is not anticipated that population growth would occur due to the recharge basins. Construction and operation of the Proposed Project improvements would not significantly induce substantial unplanned population growth either directly or indirectly. Impacts would be less than significant, and no mitigation is required.

The Project site is currently vacant and does not contain any structures. The Proposed Project improvements would not displace any existing housing and would not necessitate construction of replacement housing elsewhere. There would be no impact, and no mitigation is required.

MITIGATION MEASURES

The Project, as presented in the adopted IS/MND, would have no impacts related to the displacement of people or the construction of replacement housing. The Project would have impacts that are Less Than Significant related to unplanned population growth. No mitigation measures apply.

The Proposed Project, as presented in this Supplemental IS/MND, would have no new or substantially more severe impacts to Population and Housing. No mitigation measures apply.

CONCLUSION

Less Than Significant Impact (same as adopted IS/MND).

3.15 PUBLIC SERVICES

Issues	Adopted IS/MND Conclusion	Do Proposed Changes Require Major Revisions to the Adopted IS/MND?	Do New Circumstances Require Major Revisions to the Adopted IS/MND?	Any New Information Resulting in New or Substantially More Severe Significant Impacts?	Do Adopted IS/MND Mitigation Measures Address and/or Resolve Impacts?
PUBLIC SERVICES. Would the Project:					
a) Result in substantial adverse physical impacts associated with the provision of new or physically altered governmental facilities, need for new or physically altered governmental facilities, the construction of which could cause significant environmental impacts, in order to maintain acceptable service ratios, response times, or other performance objectives for any of the public services:					
i. Fire Protection?	Less Than Significant Impact	No	No	No	N/A
ii. Police Protection?	Less Than Significant Impact	No	No	No	N/A
iii. Schools?	No Impact	No	No	No	N/A
iv. Parks?	No Impact	No	No	No	N/A
v. Other public facilities?	No Impact	No	No	No	N/A

DISCUSSION

The previously adopted IS/MND determined that the Proposed Project would have a less than significant impact on public services. The proposed revisions to the Project, as described in Section 2.2 – Project Description, would be located within the DWR right-of-way and MWA property in unincorporated San Bernardino County, within the Area of Potential Effect (APE) previously evaluated for the Oeste Demonstration Project in the prior IS/MND.

As discussed in the previously adopted IS/MND, the closest fire station to the Project site is Fire Station 13 at 10433 Mountain Rd, Piñon Hills, CA 92372, approximately 3.5 miles south of the Project site. The closest police station to the Project Site is the Sheriff’s station at 4050 Phelan Rd, Phelan, CA. The Project is to construct and operate water recharge basins. The basins, once operational, would be unmanned and have no risk of fire that would increase demand for police or fire protection. Construction and operation of the Proposed Project improvements introduce no new Project features or components that would affect this conclusion. Impacts would continue to be less than significant.

The Project, a water recharge basin, would not directly increase the County’s population as it does not increase residential land use designations nor construct any housing. Neither the original Project, nor the Project improvements discussed herein, would result in a need for new or altered schools, parks, or other public facilities. There would be no impacts.

MITIGATION MEASURES

The Project, as presented in the adopted IS/MND, would have no impacts related to the provision of new or physically altered governmental facilities, need for new or physically altered governmental facilities, service ratios, response times, or other performance objectives for schools, parks, or other public facilities. The Project would have impacts that are Less Than Significant related to fire and police protection. No mitigation measures apply.

The Proposed Project, as presented in this Supplemental IS/MND, would have no new or substantially more severe impacts to Public Services. No mitigation measures apply.

CONCLUSION

Less Than Significant Impact (same as adopted IS/MND).

3.16 RECREATION

Issues	Adopted IS/MND Conclusion	Do Proposed Changes Require Major Revisions to the Adopted IS/MND?	Do New Circumstances Require Major Revisions to the Adopted IS/MND?	Any New Information Resulting in New or Substantially More Severe Significant Impacts?	Do Adopted IS/MND Mitigation Measures Address and/or Resolve Impacts?
RECREATION. Would the Project:					
a) Would the Project increase the use of existing neighborhood and regional parks or other recreational facilities such that substantial physical deterioration of the facility would occur or be accelerated?	No Impact	No	No	No	N/A
b) Does the Project include recreational facilities or require the construction or expansion of recreational facilities which might have an adverse physical effect on the environment?	No Impact	No	No	No	N/A

DISCUSSION

The previously adopted IS/MND determined that the Proposed Project would have no impact on recreation. The proposed revisions to the Project, as described in Section 2.2 – Project Description, would be located within the DWR right-of-way and MWA property in unincorporated San Bernardino County, within the Area of Potential Effect (APE) previously evaluated for the Oeste Demonstration Project in the prior IS/MND.

As discussed in the previously adopted IS/MND, impacts on parks and recreational facilities are typically analyzed based on increases in permanent residents from projects involving residential development. As the Proposed Project improvements would construct water recharge basins and do not involve residential development nor the construction of new recreational facilities, there would be no impacts.

MITIGATION MEASURES

The Project, as presented in the adopted IS/MND, would have no impacts affecting the use of existing neighborhood and regional parks or other recreational facilities, nor require the construction or expansion of recreational facilities. No mitigation measures apply.

The Proposed Project, as presented in this Supplemental IS/MND, would have no new or substantially more severe impacts to Recreation. No mitigation measures apply.

CONCLUSION

No Impact (same as adopted IS/MND).

3.17 TRANSPORTATION

Issues	Adopted IS/MND Conclusion	Do Proposed Changes Require Major Revisions to the Adopted IS/MND?	Do New Circumstances Require Major Revisions to the Adopted IS/MND?	Any New Information Resulting in New or Substantially More Severe Significant Impacts?	Do Adopted IS/MND Mitigation Measures Address and/or Resolve Impacts?
TRANSPORTATION. Would the Project:					
a) Conflict with a program, plan, ordinance or policy addressing the circulation system, including transit, roadway, bicycle and pedestrian facilities?	No Impact	No	No	No	N/A
b) Conflict or be inconsistent with CEQA Guidelines § 15064.3, subdivision (b)?	Less Than Significant Impact	No	No	No	N/A
c) Substantially increase hazards due to a geometric design feature (e.g., sharp curves or dangerous intersections) or incompatible uses (e.g., farm equipment)?	No Impact	No	No	No	N/A
d) Result in inadequate emergency access?	No Impact	No	No	No	N/A

DISCUSSION

The previously adopted IS/MND determined that the Proposed Project would have a less than significant impact on transportation. The proposed revisions to the Project, as described in Section 2.2 – Project Description, would be located within the DWR right-of-way and MWA property in unincorporated San Bernardino County, within the Area of Potential Effect (APE) previously evaluated for the Oeste Demonstration Project in the prior IS/MND.

As discussed in the previously adopted IS/MND, there are no bicycle, pedestrian, or transit facilities near the Project Site, and the San Bernardino County General Plan does not identify any such facilities near the Project Site. The Proposed Project improvements include a concrete access ramp for the north basin, gravel access road around the north basin’s north perimeter, and security improvements including a security camera at the turnout structure to provide remote video monitoring of this area. These modifications would not conflict with a program, plan, ordinance or policy addressing the circulation system, including transit, roadways, bicycle and pedestrian facilities.

The Project is the construction and operations of a water recharge basin, which is not a land use or linear transportation project that would generate traffic, other than the occasional operations staff and equipment. The Proposed Project improvements would not alter these project characteristics. Impacts would continue to be less than significant, and no mitigation is required.

The Proposed Project does not include the construction or widening of any road facilities, nor affect emergency access. Haul route permits would be obtained from the County of San Bernardino and County of Los Angeles as needed. There is no impact, and no mitigation is required.

MITIGATION MEASURES

The Project, as presented in the adopted IS/MND, would have no impacts related to conflict with a circulation system program, plan, ordinance or policy, hazards associated with a geometric design feature or incompatible uses, or the adequacy or emergency access. The Project would have impacts that are Less Than Significant related to Vehicle Miles Traveled [CEQA Guidelines § 15064.3, subdivision (b)]. No mitigation measures apply.

The Proposed Project, as presented in this Supplemental IS/MND, would have no new or substantially more severe impacts to Transportation. No mitigation measures apply.

CONCLUSION

Less Than Significant Impact (same as adopted IS/MND).

3.18 TRIBAL CULTURAL RESOURCES

Issues	Adopted IS/MND Conclusion	Do Proposed Changes Require Major Revisions to the Adopted IS/MND?	Do New Circumstances Require Major Revisions to the Adopted IS/MND?	Any New Information Resulting in New or Substantially More Severe Significant Impacts?	Do Adopted IS/MND Mitigation Measures Address and/or Resolve Impacts?
TRIBAL CULTURAL RESOURCES. Would the Project:					
a) Would the Project cause a substantial adverse change in the significance of a tribal cultural resource, defined in Public Resources Code § 21074 as either a site, feature, place, cultural landscape that is geographically defined in terms of the size and scope of the landscape, sacred place, or object with cultural value to a California Native American tribe, and that is:					
i. Listed or eligible for listing in the California Register of Historical Resources, or in a local register of historical resources as defined in Public Resources Code section 5020.1(k), or	Less Than Significant with Mitigation Incorporated	No	No	No	Yes
ii. A resource determined by the lead agency, in its discretion and supported by substantial evidence, to be significant pursuant to criteria set forth in subdivision (c) of Public Resources Code § 5024.1. In applying the criteria set forth in subdivision (c) of Public Resource Code § 5024.1, the lead agency shall consider the significance of the resource to a California Native American tribe.	Less Than Significant with Mitigation Incorporated	No	No	No	Yes

DISCUSSION

The previously adopted IS/MND determined that the Proposed Project would have a less than significant impact with mitigation incorporated on tribal cultural resources. The proposed revisions to the Project, as described in Section 2.2 – Project Description, would be located within the DWR right-of-way and MWA property in unincorporated San Bernardino County, within the Area of Potential Effect (APE) previously evaluated for the Oeste Demonstration Project in the prior IS/MND.

Consultation with local tribes was conducted for the original IS/MND, and no tribes responded. Consultation was also conducted for this Supplemental IS/MND between March 18 and April 17, 2026. One reply was received from the Historic Preservation Office of the Ft. Yuma Quechan Tribe, advising they do not wish to provide comments on the project. No other tribes responded.

The Proposed Project improvements would be constructed within the footprint/areas that were previously evaluated under the original IS/MND. The area comprises a mix of undisturbed and disturbed land, and there are no resources that have been identified as significant within or near the Project Site. The proposed Improvements would introduce no components or features that would affect the original impact determinations. While the tribes did not request consultation, **Mitigation Measures TCR-1** and **TCR-2** would continue to be implemented to ensure there would be no impacts in the event that unanticipated finds are discovered. With the implementation of **TRC-1** and **TRC-2**, the impacts of the Proposed Project improvements would be less than significant.

MITIGATION MEASURES

The Project, as presented in the adopted IS/MND, would have impacts that are Less Than Significant with Mitigation Incorporated related to an adverse change in the significance of a tribal cultural resource that is listed or eligible for listing in the California Register of Historical Resources or in a local register of historical resources, or that is determined by the lead agency to be significant.

Compliance with **Mitigation Measures TCR-1, TCR-2, and CR-3** would reduce potentially significant impacts of the Proposed Project associated with Tribal Cultural Resources to Less Than Significant.

The Proposed Project, as presented in this Supplemental IS/MND, would have no new or substantially more severe impacts to Tribal Cultural Resources. Compliance with **Mitigation Measures TCR-1, TCR-2, and CR-3** would continue to ensure that potential impacts to Tribal Cultural Resources are Less Than Significant.

CONCLUSION

Less Than Significant with Mitigation Incorporated (same as adopted IS/MND).

3.19 UTILITIES AND SERVICE SYSTEMS

Issues	Adopted IS/MND Conclusion	Do Proposed Changes Require Major Revisions to the Adopted IS/MND?	Do New Circumstances Require Major Revisions to the Adopted IS/MND?	Any New Information Resulting in New or Substantially More Severe Significant Impacts?	Do Adopted IS/MND Mitigation Measures Address and/or Resolve Impacts?
UTILITIES AND SERVICE SYSTEMS. Would the Project:					
a) Require or result in the relocation or construction of new or expanded water, wastewater treatment or storm water drainage, electric power, natural gas, or telecommunications facilities, the construction or relocation of which could cause significant environmental effects?	No Impact	No	No	No	N/A
b) Have sufficient water supplies available to serve the Project and reasonably foreseeable future development during normal, dry and multiple dry years?	Less Than Significant Impact	No	No	No	N/A
c) Result in a determination by the wastewater treatment provider, which serves or may serve the Project that it has adequate capacity to serve the Project's Projected demand in addition to the provider's existing commitments?	Less Than Significant Impact	No	No	No	N/A
d) Generate solid waste in excess of state or local standards, or in excess of the capacity of local infrastructure, or otherwise impair the attainment of solid waste reduction goals?	Less Than Significant Impact	No	No	No	N/A
e) Comply with federal, state, and local management and reduction statutes and regulations related to solid waste?	Less Than Significant Impact	No	No	No	N/A

DISCUSSION

The previously adopted IS/MND determined that the Proposed Project would have a less than significant impact on utilities and service systems. The proposed revisions to the Project, as described in Section 2.2 – Project Description, would be located within the DWR right-of-way and MWA property in unincorporated San Bernardino County, within the Area of Potential Effect (APE) previously evaluated for the Oeste Demonstration Project in the prior IS/MND.

The Project analyzed in the original IS/MND exclusively comprised the construction and operation of a water recharge basin, and did not require wastewater, stormwater, electric power, nor natural gas or telecommunications facilities. The Proposed Project improvements, however, would include a new permanent turnout from the California Aqueduct including a traveling screen system, access road from the basin site, and siphon pipeline to convey State Water Project (SWP) water to the Oeste Recharge Basin. Supporting facilities would include a vacuum pump system, electrical building, two concrete vaults, and three monitoring wells consisting of one deep monitoring well and two shallow monitoring wells.

In addition to the new facilities described above, selected improvements constructed as part of the Demonstration Project would be salvaged (vacuum pump and associated equipment, piping, and valving; flow meter, shipping container and main line valves) or removed (siphon inlet pipes, portion of siphon pipeline, and corrugated metal enclosures).

The Proposed Project improvements would be constructed within the footprint/areas that were previously evaluated under the original IS/MND. Impacts would be less than significant.

As discussed in the previously adopted IS/MND, the Phelan Piñon Hills Community Services District would supply water for construction-related dust control and operations-related tasks such as basin grading and maintenance. The District is understood to have sufficient water supplies available to serve these needs. Project improvements would continue to recharge water into the Oeste Sub-basin thereby increasing groundwater availability for the Phelan Piñon Hills Community Services District's future use. There would be a less than significant impact, and no mitigation would be required.

Construction of the Proposed Project improvements would require a modest number of construction workers and would not generate significant quantities of wastewater nor solid waste. The collection, transportation, and disposal of waste generated by the Project improvements would comply with all applicable federal, state, and local statutes and regulations.

MITIGATION MEASURES

The Project, as presented in the adopted IS/MND, would have impacts that are Less Than Significant related to water supply availability, wastewater service capacity, and solid waste service capacity, reduction goals, and compliance. No mitigation measures apply.

The Proposed Project, as presented in this Supplemental IS/MND, would introduce selected components with electricity needs; however, impacts would be less than significant. Overall, there would be no new or substantially more severe impacts to Utilities and Service Systems. No mitigation measures apply.

CONCLUSION

Less Than Significant Impact (same as adopted IS/MND).

3.20 WILDFIRE

Issues	Adopted IS/MND Conclusion	Do Proposed Changes Require Major Revisions to the Adopted IS/MND?	Do New Circumstances Require Major Revisions to the Adopted IS/MND?	Any New Information Resulting in New or Substantially More Severe Significant Impacts?	Do Adopted IS/MND Mitigation Measures Address and/or Resolve Impacts?
WILDFIRE. Would the Project:					
a) Substantially impair an adopted emergency response plan or emergency evacuation plan?	No Impact	No	No	No	N/A
b) Due to slope, prevailing winds, and other factors, exacerbate wildfire risks, and thereby expose Project occupants to pollutant concentrations from a wildfire or the uncontrolled spread of a wildfire?	No Impact	No	No	No	N/A
c) Require the installation or maintenance of associated infrastructure (such as roads, fuel breaks, emergency water sources, power lines or other utilities) that may exacerbate fire risk or that may result in temporary or ongoing impacts to the environment?	No Impact	No	No	No	N/A
d) Expose people or structures to significant risks, including downslope or downstream flooding or landslides, as a result of runoff, post-fire slope instability, or drainage changes?	No Impact	No	No	No	N/A

DISCUSSION

The previously adopted IS/MND determined that the Proposed Project would have no impact on wildfire. The proposed revisions to the Project, as described in Section 2.2 – Project Description, would be located within the DWR right-of-way and MWA property in unincorporated San Bernardino County, within the Area of Potential Effect (APE) previously evaluated for the Oeste Demonstration Project in the prior IS/MND.

The Proposed Project improvements are not located within a very high fire hazard severity zone according to County of San Bernardino General Plan maps or Local Responsibility and State Responsibility Area maps. Therefore, no impacts associated with wildfire would occur and no mitigation is required.

MITIGATION MEASURES

The Project, as presented in the adopted IS/MND, would have no impacts to an adopted emergency response plan or emergency evacuation plan, would not exacerbate wildfire risks exposing Project occupants to pollutants, would not require the installation or maintenance of associated infrastructure that may exacerbate fire risk, nor expose people or structures to significant post-wildfire-related risks. No mitigation measures apply.

The Proposed Project, as presented in this Supplemental IS/MND, would have no new or substantially more severe impacts to Wildfire. No mitigation measures apply.

CONCLUSION

No Impact (same as adopted IS/MND).

3.21 MANDATORY FINDINGS OF SIGNIFICANCE

Issues	Adopted IS/MND Conclusion	Do Proposed Changes Require Major Revisions to the Adopted IS/MND?	Do New Circumstances Require Major Revisions to the Adopted IS/MND?	Any New Information Resulting in New or Substantially More Severe Significant Impacts?	Do Adopted IS/MND Mitigation Measures Address and/or Resolve Impacts?
MANDATORY FINDINGS OF SIGNIFICANCE. Would the Project:					
a) Does the Project have the potential to substantially degrade the quality of the environment, substantially reduce the habitat of a fish or wildlife species, cause a fish or wildlife population to drop below self-sustaining levels, threaten to eliminate a plant or animal community, substantially reduce the number or restrict the range of a rare or endangered plant or animal or eliminate important examples of the major periods of California history or prehistory?	Less Than Significant with Mitigation Incorporated	No	No	No	Yes
b) Does the Project have impacts that are individually limited, but cumulatively considerable? ("Cumulatively considerable" means that the incremental effects of a Project are considerable when viewed in connection with the effects of past Projects, the effects of other current Projects, and the effects of probable future Projects.)	Less Than Significant Impact	No	No	No	N/A
c) Does the Project have environmental effects which will cause substantial adverse effects on human beings, either directly or indirectly?	Less Than Significant with Mitigation Incorporated	No	No	No	Yes

DISCUSSION

As concluded in the previously adopted IS/MND, the Project Site is vacant, contains no drainages, does not contain suitable habitat for any sensitive species, and would not conflict with the provisions of an adopted Habitat Conservation Plan, Natural Community Conservation Plan, other approved local, regional, or state habitat conservation plan. **Mitigation Measures BIO-1** and **BIO-2** and **BIO-3** were identified to reduce potential impacts to western Joshua tree and nesting birds to less than significant levels.

No cultural resources have been recorded within the Project Site, and the Project Site does not contain any resources that are important to major periods of California history or prehistory. However, **Mitigation Measures CR-1** and **CR-2** were proposed to manage unanticipated discoveries of cultural and Native American resources, and **CR-3**, **TCR-1**, and **TCR-2** were proposed to manage unanticipated discoveries of human remains and reduce potential impacts to less than significant. The Project Site is within an unknown potential paleontological resource according to the Cultural Resources study performed for the Project, although the level of knowledge of the area is not specifically known. **Mitigation Measure GEO-1** is proposed to manage unanticipated discoveries of paleontological resources to reduce potential impacts to less than significant. Implementation of these measures, as presented in the previously adopted IS/MND, would continue to ensure that Project-specific impacts would be less than significant.

With the implementation of **Mitigation Measures BIO-1, BIO-2, BIO-3** and **CR-1, CR-2, CR-3, TCR-1, TCR-2** and **GEO-1**, the Proposed Project improvements would not substantially degrade the quality of the environment, substantially reduce the habitat of a fish or wildlife species, cause a fish or wildlife population to drop below self-sustaining levels, threaten to eliminate a plant or animal community, reduce the number or restrict the range of a rare or an endangered plant or animal or eliminate important examples of the major periods of California history or prehistory.

With respect to cumulatively considerable impacts, the previously adopted IS/MND concluded that the Proposed Project would not result in any significant and unavoidable environmental impacts in any environmental category with the implementation of Project-specific mitigation measures. Implementation of mitigation measures at the Project level would reduce the potential for incremental environmental effects of the Proposed Project when viewed in conjunction with the effects of past projects, current projects, or planned future projects. Project impacts would be less than significant with mitigation incorporated. The Proposed Project improvements presented in this Supplemental IS/MND would not alter this conclusion.

The Proposed Project improvements would not cause substantial adverse effects on human beings, either directly or indirectly, Therefore, the Project would not directly or indirectly cause substantial adverse effects on human beings.

MITIGATION MEASURES

The Project, as presented in the adopted IS/MND, would have Less Than Significant impacts that are individually limited, but cumulatively considerable. No mitigation measures apply.

The Project would have impacts that are Less Than Significant with Mitigation Incorporated related to Air Quality Biological Resources, Cultural Resources, Geology and Soils, and Tribal Cultural Resources. Compliance with **Mitigation Measures AIR-1, BIO-1, BIO-2, BIO-3, CR-1, CR-2, CR-3, CR-4, GEO-1, TCR-1**, and **TCR-2** would reduce potentially significant impacts of the Proposed Project to Less Than Significant.

The Proposed Project, as presented in this Supplemental IS/MND, would have no new or substantially more severe impacts to Air Quality, Biological Resources, Cultural Resources, Geology and Soils, and Tribal Cultural Resources. Compliance with **Mitigation Measures AIR-1, BIO-1, BIO-2, BIO-3, CR-1, CR-2, CR-3, CR-4, GEO-1, TCR-1**, and **TCR-2** would continue to ensure that potential impacts to Air Quality, Biological Resources, Cultural Resources, Geology and Soils, and Tribal Cultural Resources are Less Than Significant.

CONCLUSION

Less Than Significant with Mitigation Incorporated (same as adopted IS/MND).

4.0 LIST OF PREPARERS

This section lists those individuals who contributed to the preparation of this Supplemental IS/MND.

4.1 MOJAVE WATER AGENCY

Melody Bailey	Water Resources Manager
Tony Winkel	Senior Principal Hydrogeologist

4.2 CONSULTANTS

<u>Contact</u>	<u>Affiliation</u>
Charles Smith, AICP, LEED AP	Ardurra Group
Ryan Huston	Ardurra Group

5.0 REFERENCES

The following references were utilized during preparation of this Initial Study/ Environmental Checklist.

Ardurra Group, Inc., *Oeste Permanent Aqueduct Turnout Project Basis of Design Technical Memorandum*. February 11, 2026.

Compass Consulting Enterprises, Inc., *Initial Study/Mitigated Negative Declaration for Oeste Basins Groundwater Recharge Project, Piñon Hills, CA*. August 2023.

Wood Rodgers, Inc., *Oeste Demonstration Recharge Pilot Test Multi-Completion and Vadose Zone Monitoring Wells Basis of Design Report*. August 5, 2024.

This page is left intentionally blank.