

# **APPENDIX F**

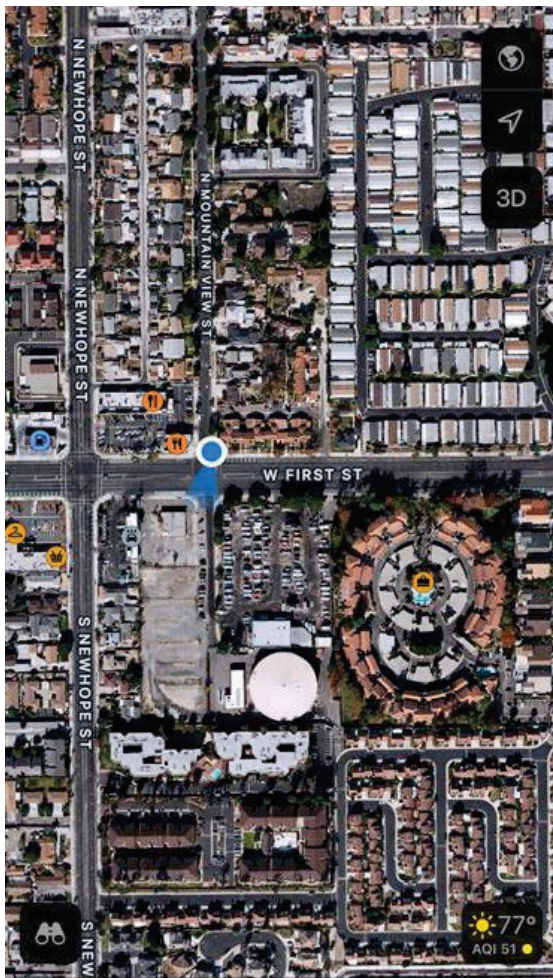
## **Noise Analysis**



<b>Site Number:</b> NM-1		
<b>Recorded By:</b> Dennis Dinh, Darshan Shivaiah		
<b>Job Number:</b> 208279		
<b>Date:</b> 7/31/2025		
<b>Time:</b> 12:20 p.m.		
<b>Location:</b> Northeast corner of the Mountain View Street and 1 <sup>st</sup> Street intersection		
<b>Source of Ambient Noise:</b> Traffic along Mountain View Street and 1 <sup>st</sup> Street		
Noise Data		
<b>L<sub>eq</sub> (dB)</b>	<b>L<sub>min</sub> (dB)</b>	<b>L<sub>max</sub> (dB)</b>
69.8	52.2	82.7

Equipment						
Category	Type	Vendor	Model	Serial No.	Cert. Date	Note
Sound	Sound Level Meter	Brüel & Kjær	2250	3011133	06/04/2023	
	Microphone	Brüel & Kjær	4189	3086765	06/04/2023	
	Preamp	Brüel & Kjær	ZC 0032	25380	06/04/2023	
	Calibrator	Brüel & Kjær	4231	2545667	06/04/2023	
Weather Data						
Est.	<b>Duration:</b> 10 minutes			<b>Sky:</b> Sunny		
	<b>Note:</b> dBA Offset = 0.02			<b>Sensor Height (ft):</b> 5 ft		
	<b>Wind Ave Speed (mph / m/s)</b>		<b>Temperature (degrees Fahrenheit)</b>		<b>Barometer Pressure (inches)</b>	
	5		77		30.06	

**Photo of Measurement Location**





2250

Instrument:		2250
Application:		BZ7225 Version 4.7.6
Start Time:		07/31/2025 12:20:05
End Time:		07/31/2025 12:30:05
Elapsed Time:		00:10:00
Bandwidth:		1/3-octave
Max Input Level:		142.20

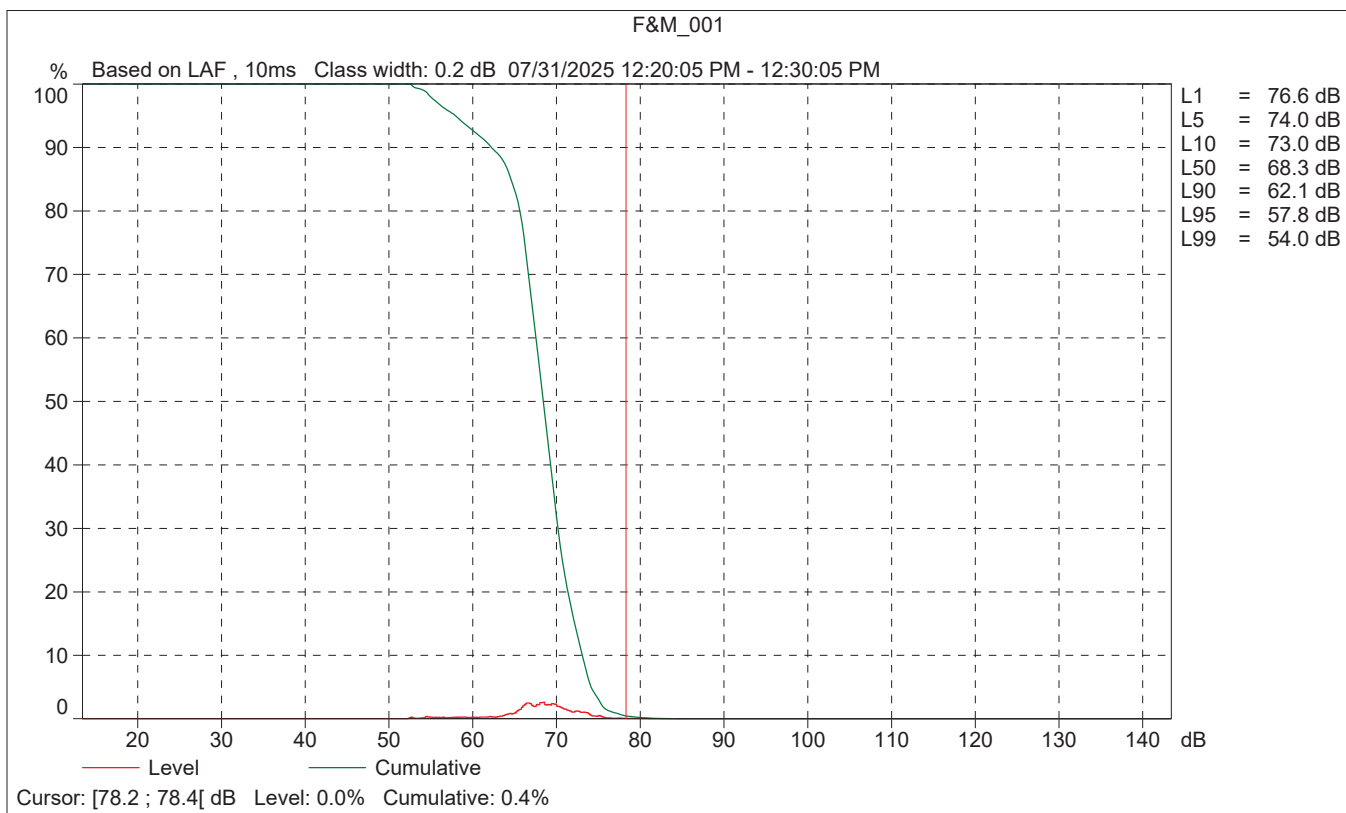
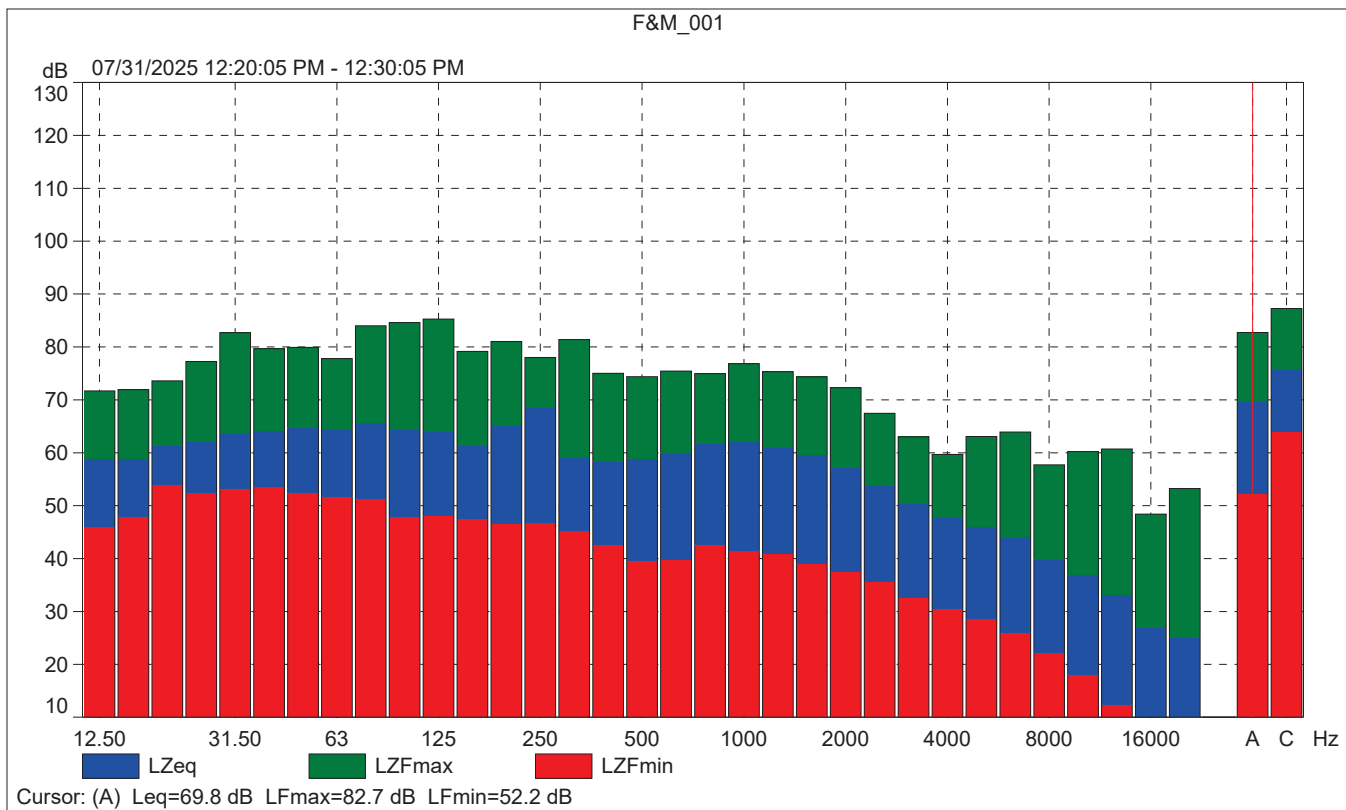
	Time	Frequency
Broadband (excl. Peak):	FSI	AC
Broadband Peak:		C
Spectrum:	FS	Z

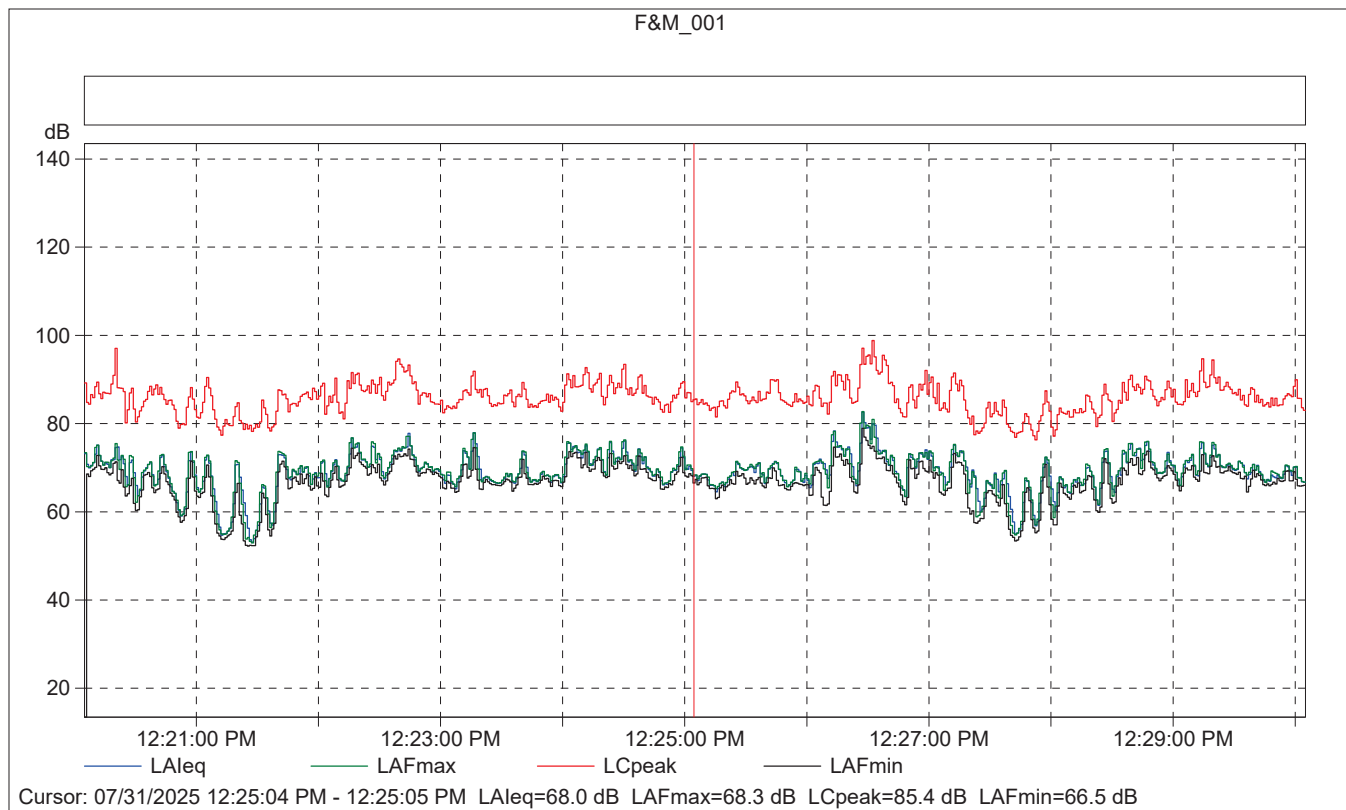
Instrument Serial Number:		3011133
Microphone Serial Number:		3086765
Input:		Top Socket
Windscreen Correction:		UA-1650
Sound Field Correction:		Free-field

Calibration Time:		07/31/2025 10:44:30
Calibration Type:		External reference
Sensitivity:		43.22599619627 mV/Pa

F&M\_001

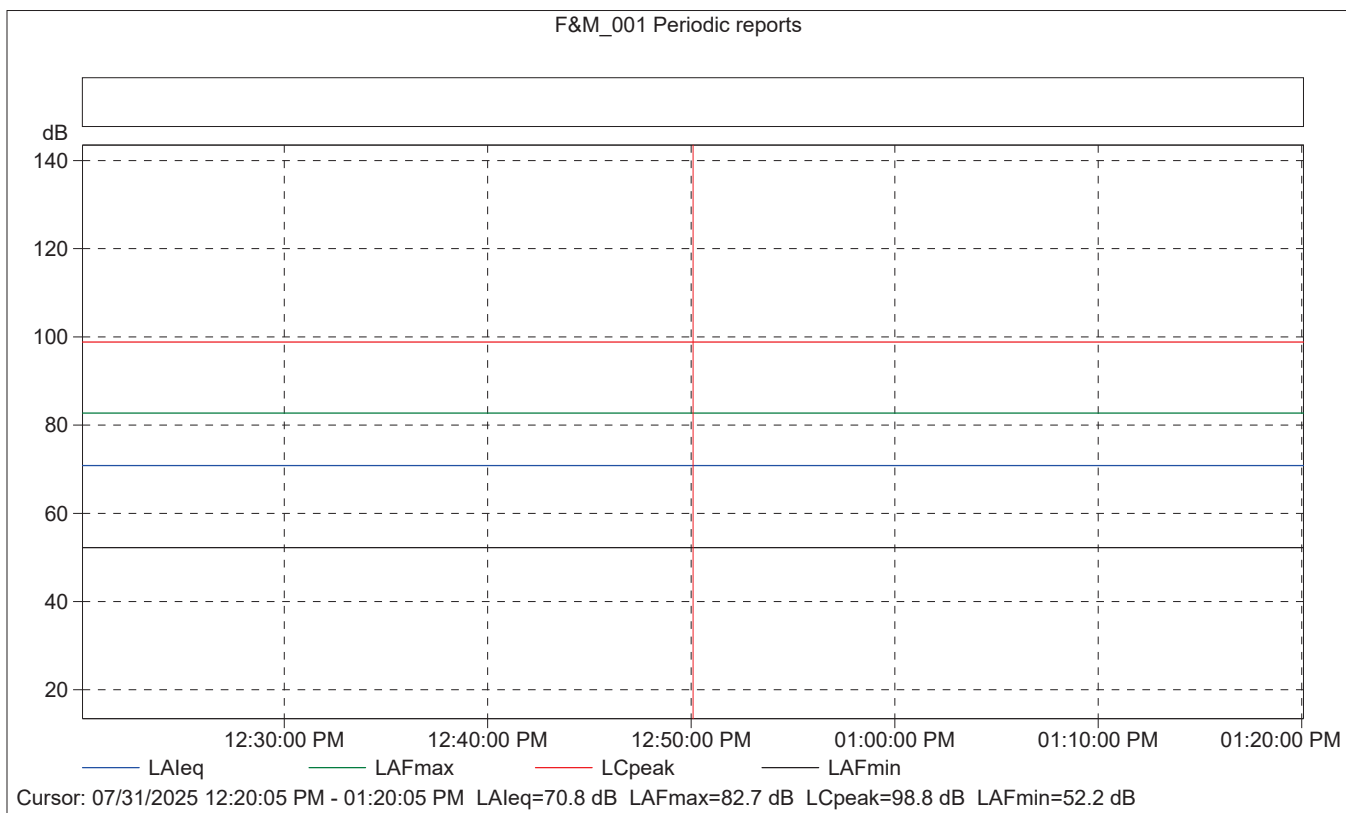
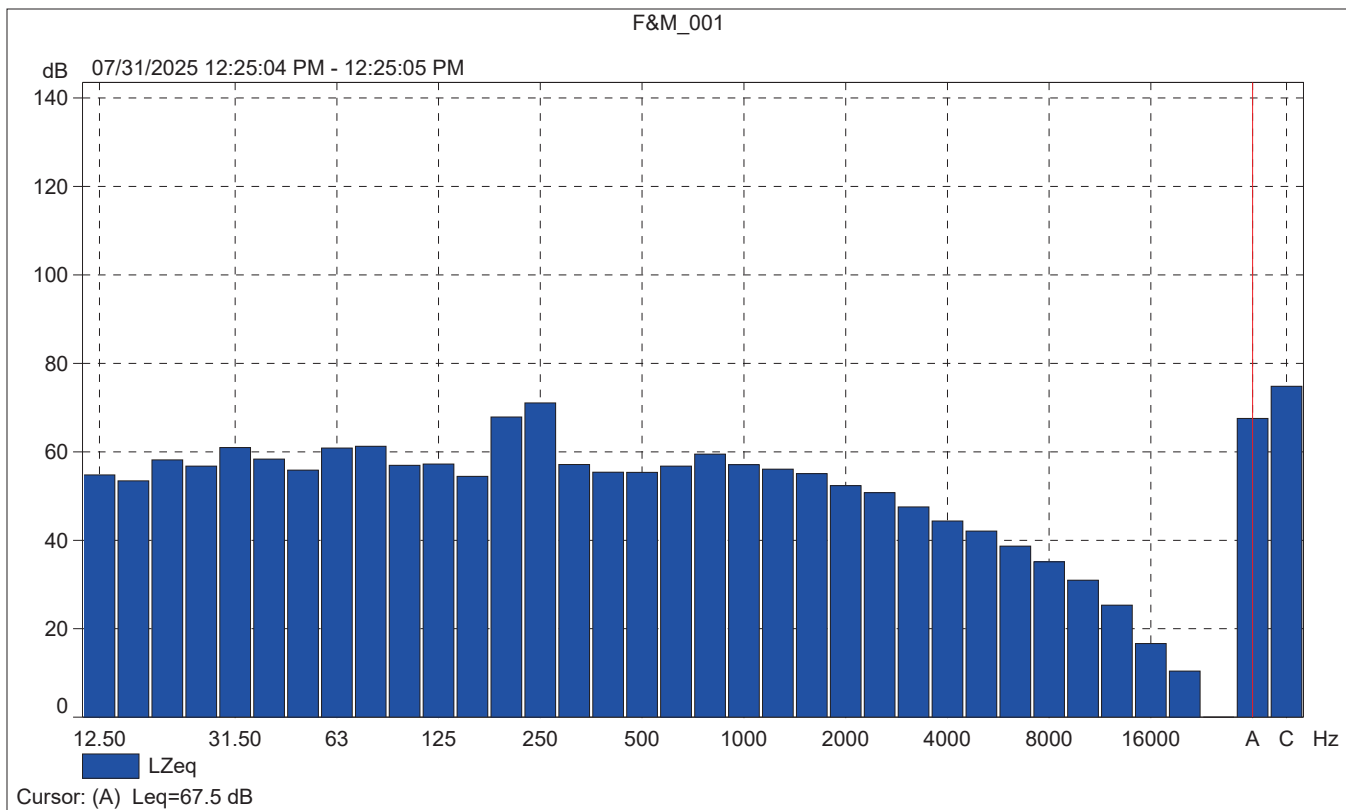
	Start time	End time	Elapsed time	Overload [%]	LAeq [dB]	LAFmax [dB]	LAFmin [dB]
Value				0.00	69.8	82.7	52.2
Time	12:20:05 PM	12:30:05 PM	0:10:00				
Date	07/31/2025	07/31/2025					





### F&M\_001

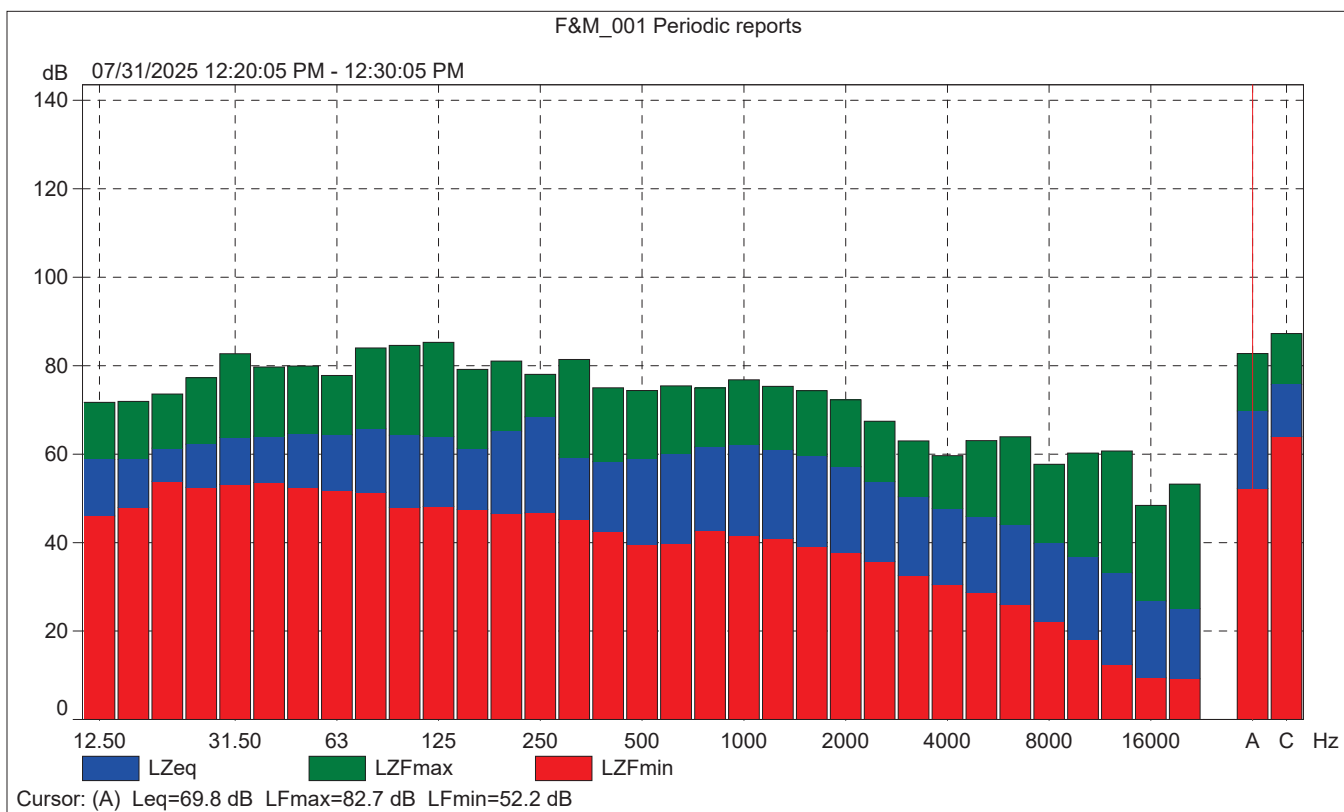
	Start time	Elapsed time	Overload [%]	LAeq [dB]	LAFmax [dB]	LAFmin [dB]
Value			0.00	68.0	68.3	66.5
Time	12:25:04 PM	0:00:01				
Date	07/31/2025					





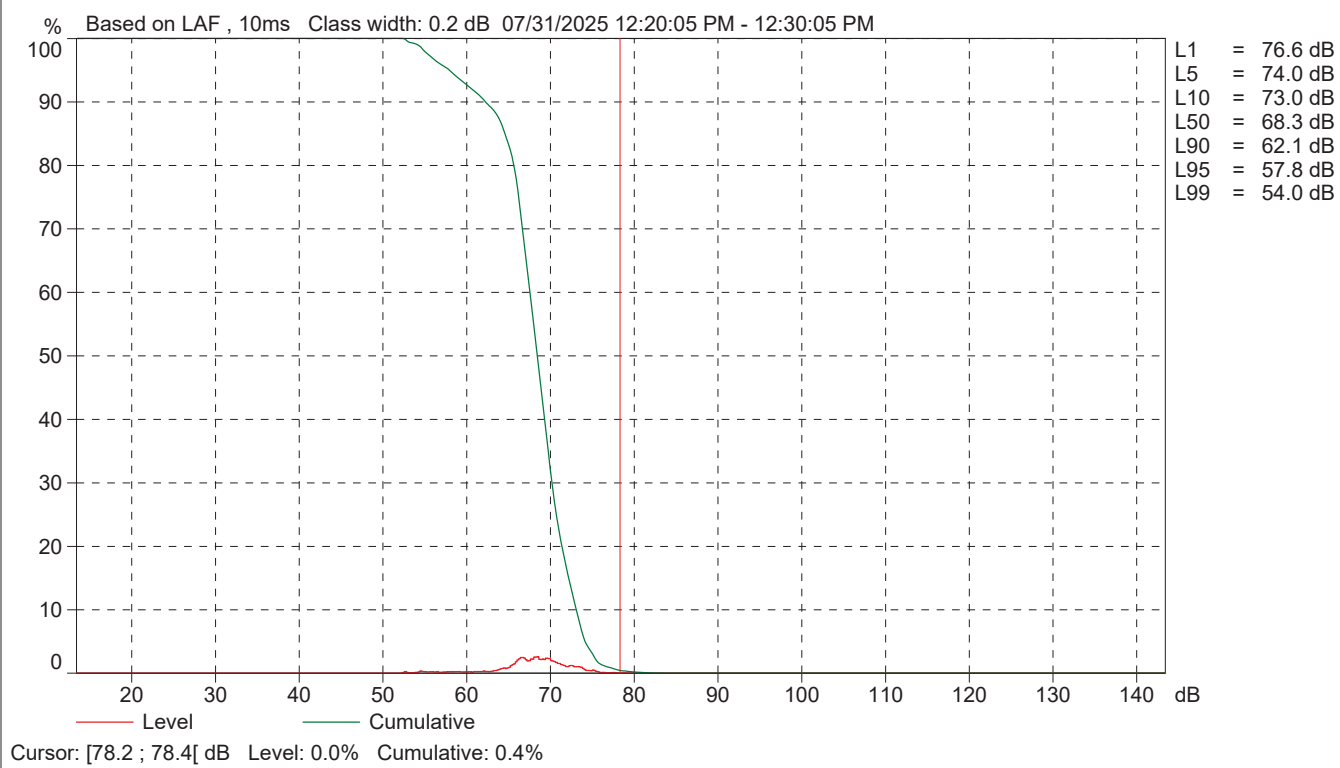
# F&M\_001 Periodic reports

	Start time	Elapsed time	Overload [%]	LALeq [dB]	LAFmax [dB]	LAFmin [dB]
Value			0.00	70.8	82.7	52.2
Time	12:20:05 PM	0:10:00				
Date	07/31/2025					





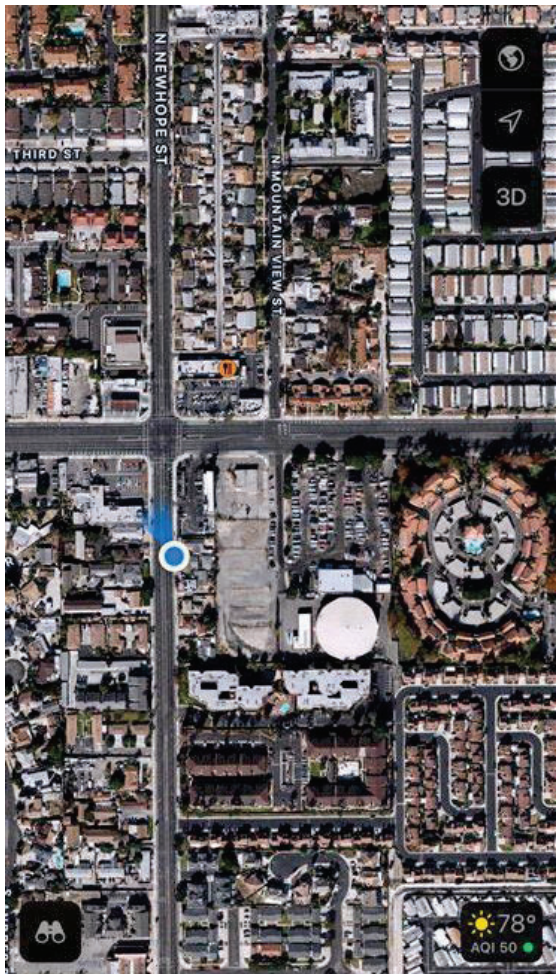
F&M\_001 Periodic reports



<b>Site Number:</b> NM-2		
<b>Recorded By:</b> Dennis Dinh, Darshan Shivaiah		
<b>Job Number:</b> 208279		
<b>Date:</b> 7/31/2025		
<b>Time:</b> 12:53 p.m.		
<b>Location:</b> In front of 201 South Newhope Street		
<b>Source of Ambient Noise:</b> Traffic along Newhope Street		
Noise Data		
<b>L<sub>eq</sub> (dB)</b>	<b>L<sub>min</sub> (dB)</b>	<b>L<sub>max</sub> (dB)</b>
69.2	48.4	80.3

Equipment						
Category	Type	Vendor	Model	Serial No.	Cert. Date	Note
Sound	Sound Level Meter	Brüel & Kjær	2250	3011133	06/04/2023	
	Microphone	Brüel & Kjær	4189	3086765	06/04/2023	
	Preamp	Brüel & Kjær	ZC 0032	25380	06/04/2023	
	Calibrator	Brüel & Kjær	4231	2545667	06/04/2023	
Weather Data						
Est.	<b>Duration:</b> 10 minutes			<b>Sky:</b> Sunny		
	<b>Note:</b> dBA Offset = 0.02			<b>Sensor Height (ft):</b> 5 ft		
	<b>Wind Ave Speed (mph / m/s)</b>		<b>Temperature (degrees Fahrenheit)</b>		<b>Barometer Pressure (inches)</b>	
	5		78		30.06	

**Photo of Measurement Location**





2250

Instrument:		2250
Application:		BZ7225 Version 4.7.6
Start Time:		07/31/2025 12:53:33
End Time:		07/31/2025 13:03:33
Elapsed Time:		00:10:00
Bandwidth:		1/3-octave
Max Input Level:		142.20

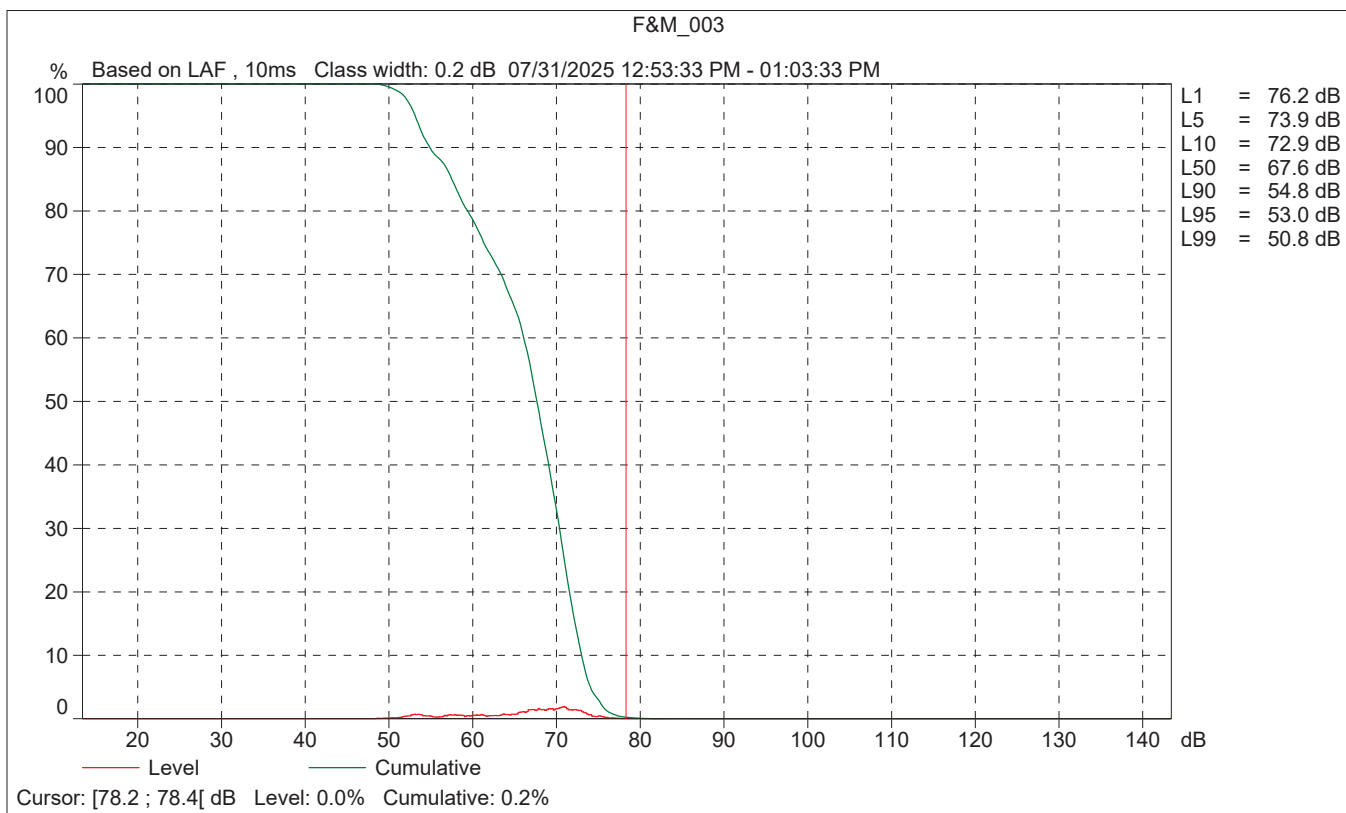
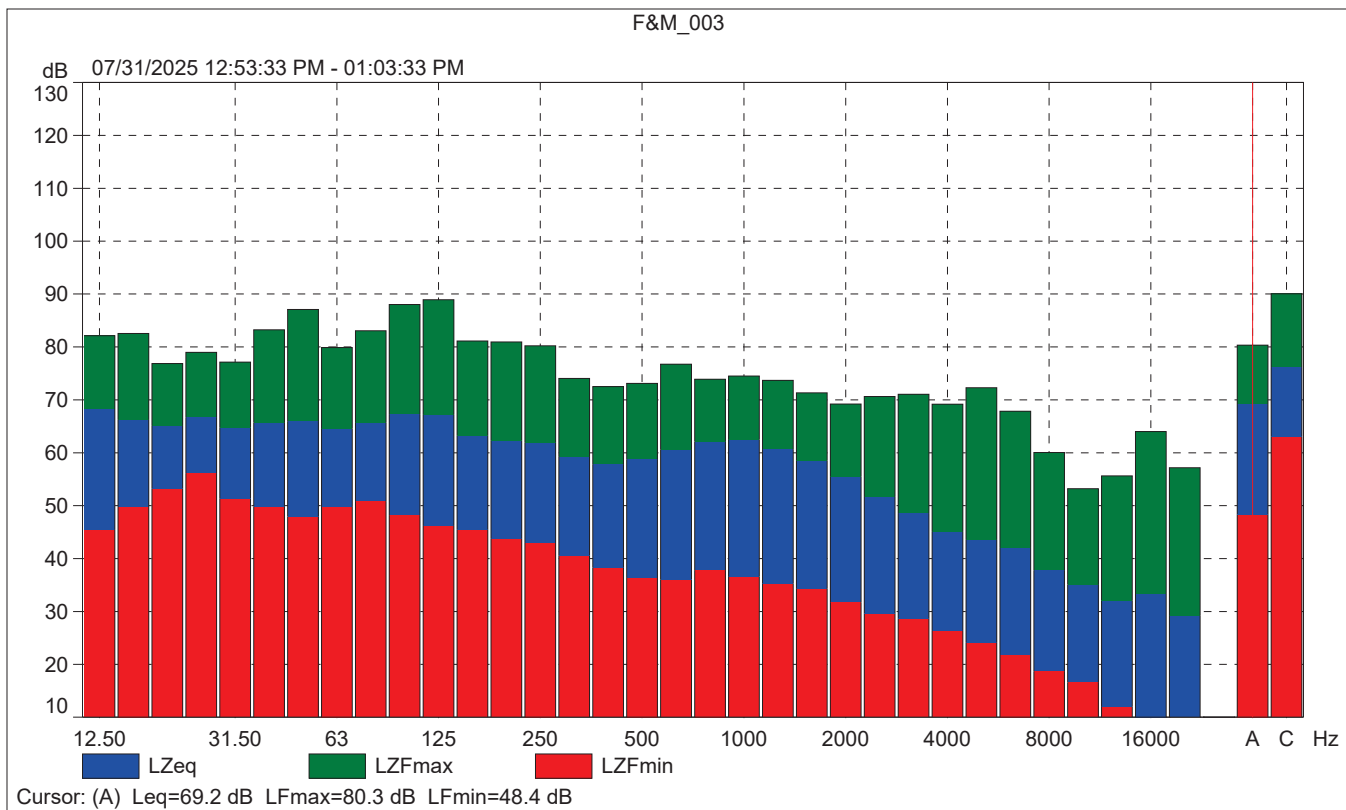
	Time	Frequency
Broadband (excl. Peak):	FSI	AC
Broadband Peak:		C
Spectrum:	FS	Z

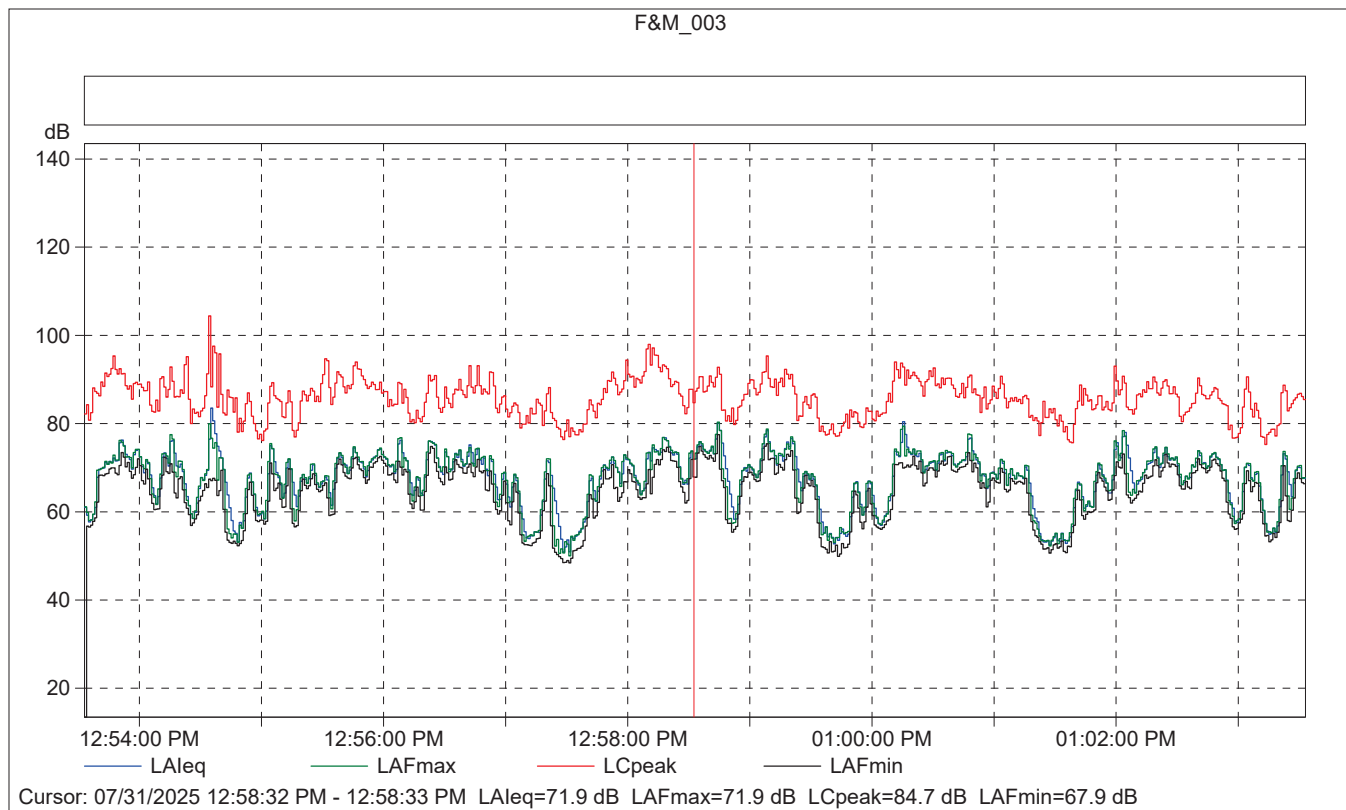
Instrument Serial Number:		3011133
Microphone Serial Number:		3086765
Input:		Top Socket
Windscreen Correction:		UA-1650
Sound Field Correction:		Free-field

Calibration Time:		07/31/2025 10:44:30
Calibration Type:		External reference
Sensitivity:		43.22599619627 mV/Pa

F&M\_003

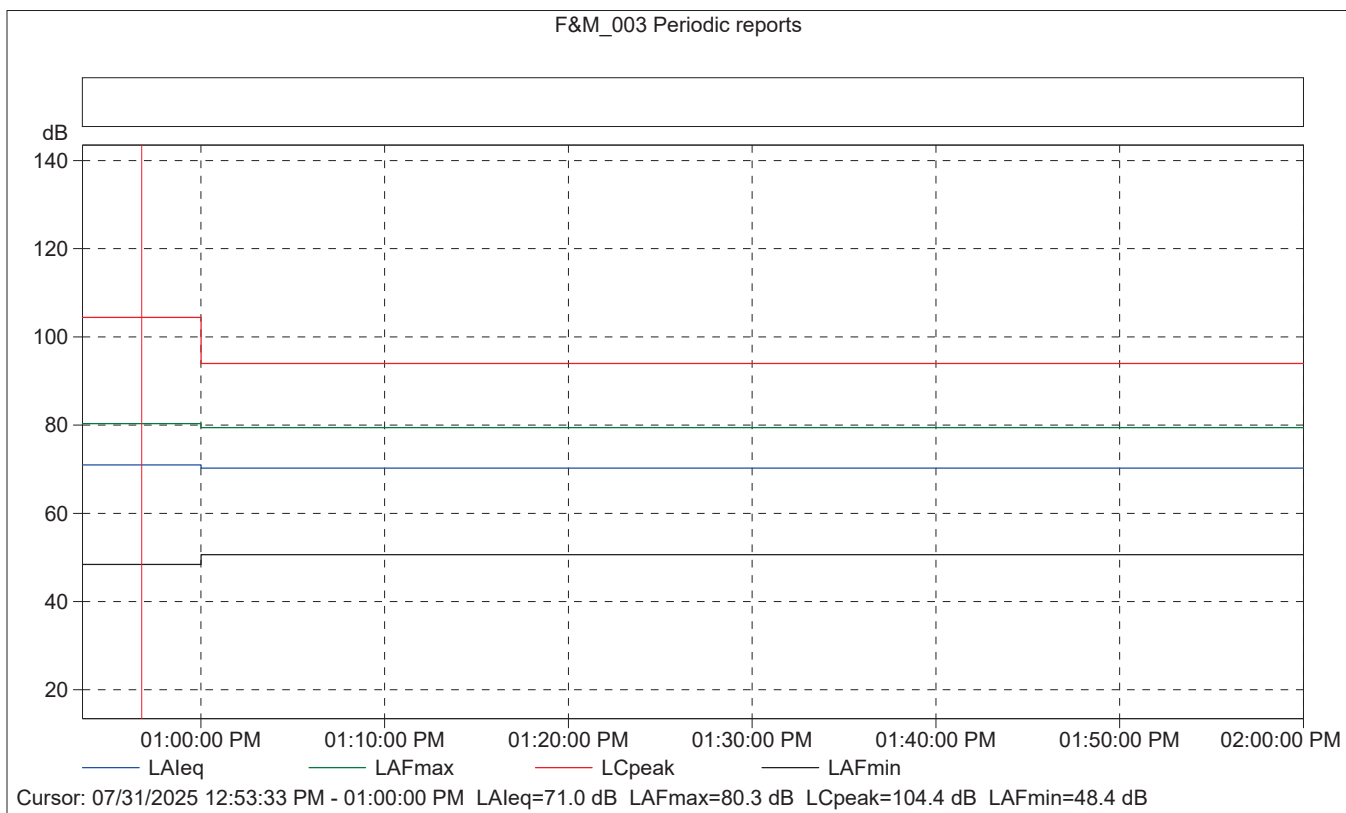
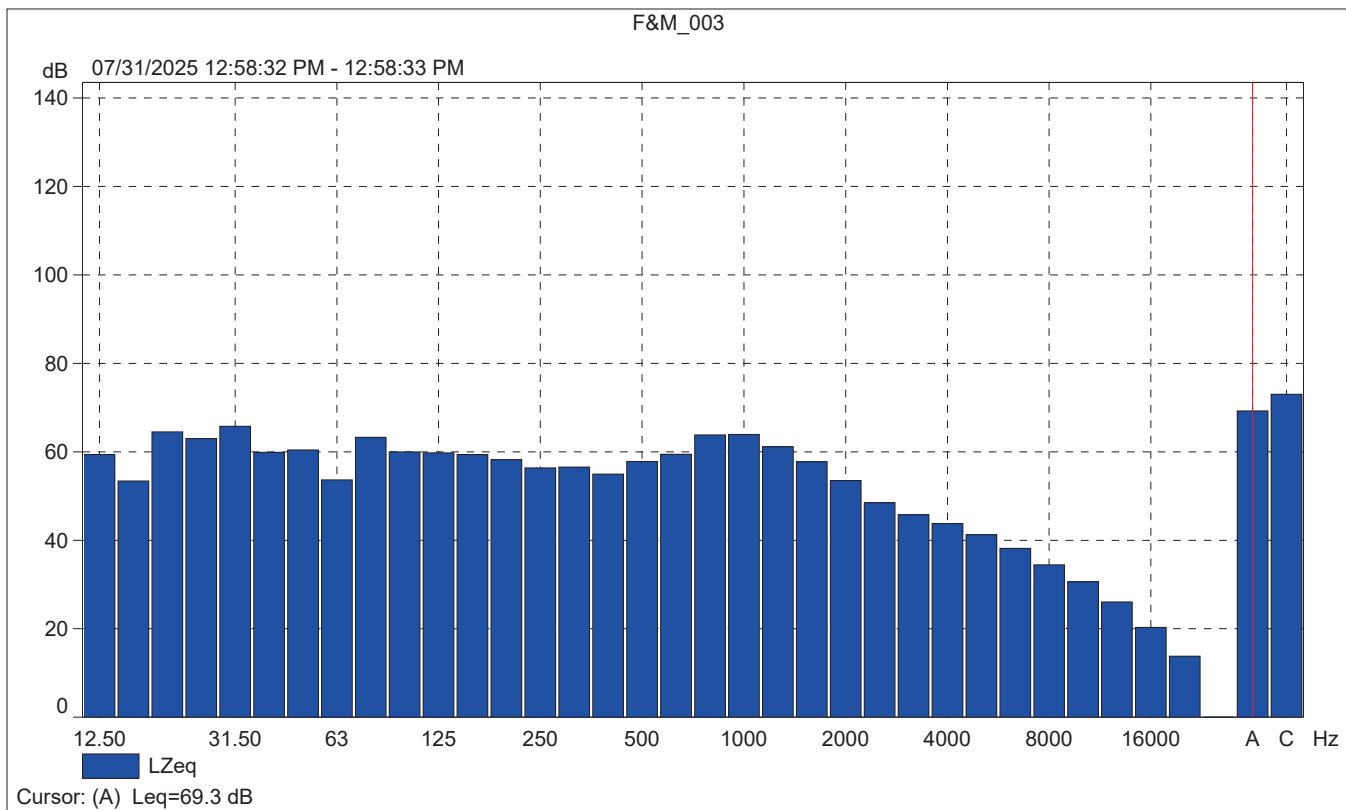
	Start time	End time	Elapsed time	Overload [%]	LAeq [dB]	LAFmax [dB]	LAFmin [dB]
Value				0.00	69.2	80.3	48.4
Time	12:53:33 PM	01:03:33 PM	0:10:00				
Date	07/31/2025	07/31/2025					





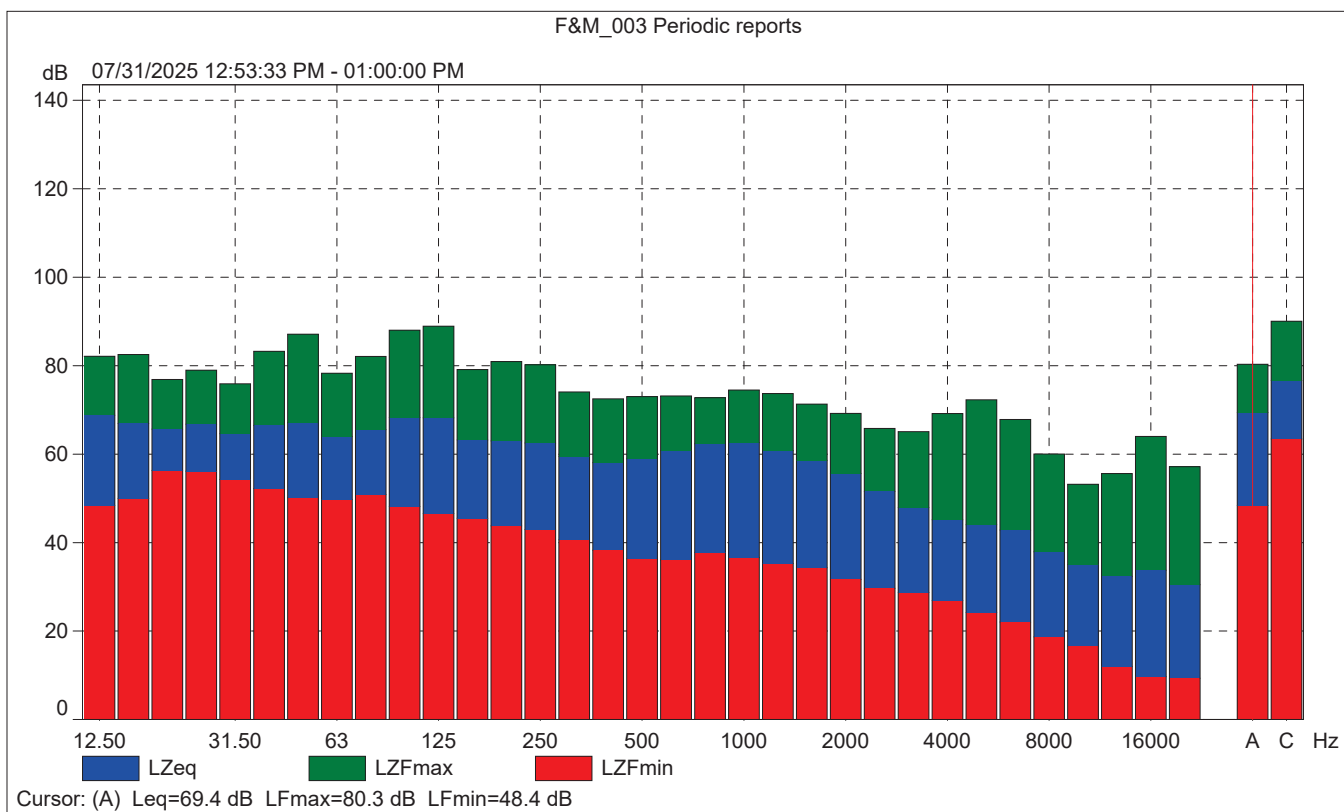
### F&M\_003

	Start time	Elapsed time	Overload [%]	LAeq [dB]	LAFmax [dB]	LAFmin [dB]
Value			0.00	71.9	71.9	67.9
Time	12:58:32 PM	0:00:01				
Date	07/31/2025					



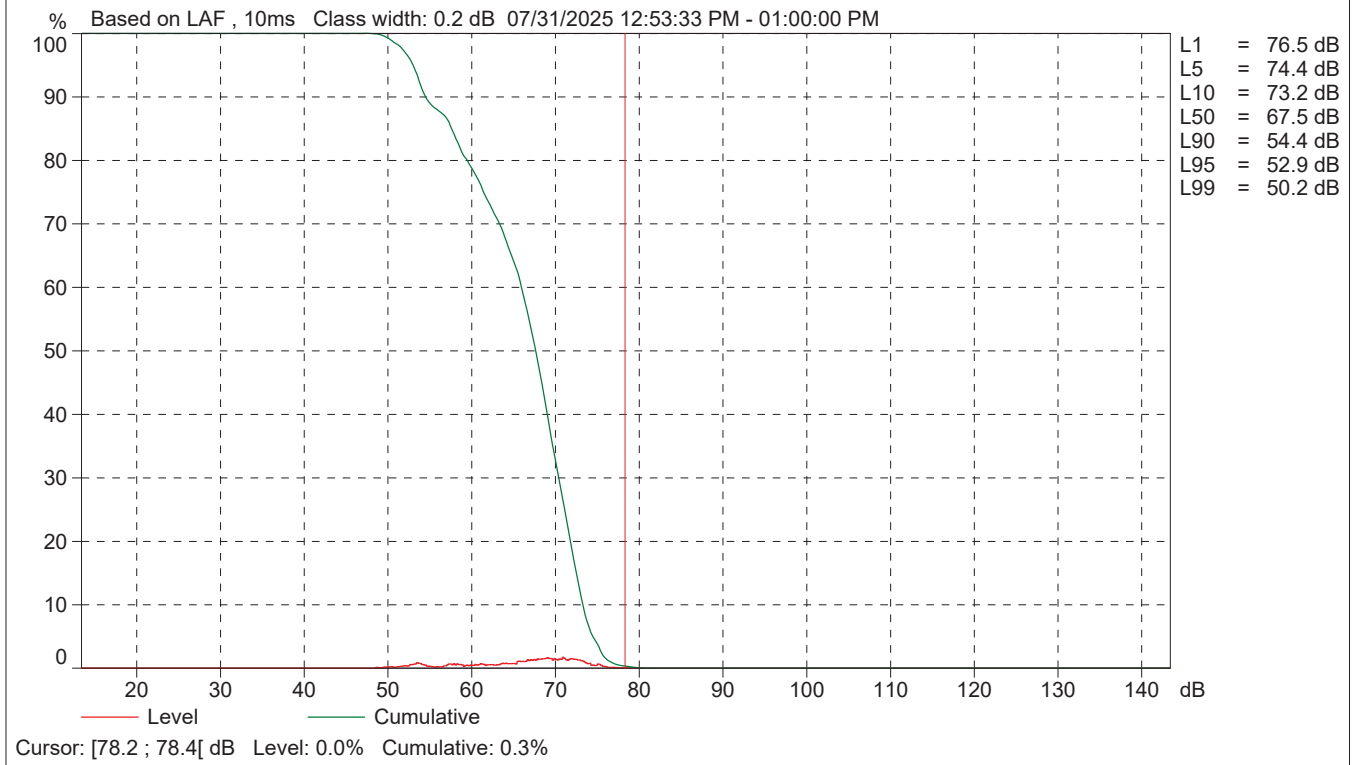
# F&M\_003 Periodic reports

	Start time	Elapsed time	Overload [%]	LALeq [dB]	LAFmax [dB]	LAFmin [dB]
Value			0.00	71.0	80.3	48.4
Time	12:53:33 PM	0:06:27				
Date	07/31/2025					





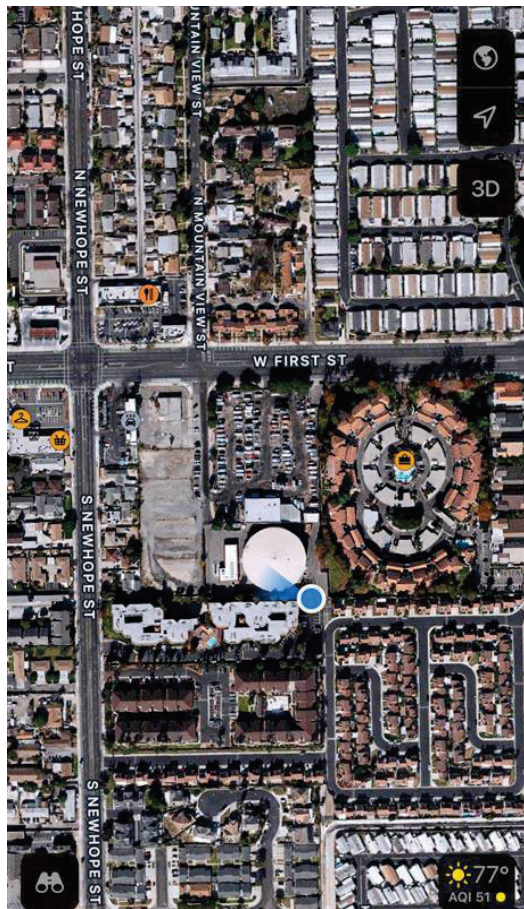
F&M\_003 Periodic reports



<b>Site Number:</b> NM-3		
<b>Recorded By:</b> Dennis Dinh, Darshan Shivaiah		
<b>Job Number:</b> 208279		
<b>Date:</b> 7/31/2025		
<b>Time:</b> 12:37 p.m.		
<b>Location:</b> Parking lot of the Alder Court Apartments near Potomac Common		
<b>Source of Ambient Noise:</b> Residents talking and urban noise		
Noise Data		
<b>L<sub>eq</sub> (dB)</b>	<b>L<sub>min</sub> (dB)</b>	<b>L<sub>max</sub> (dB)</b>
47.1	39.0	65.4

Equipment						
Category	Type	Vendor	Model	Serial No.	Cert. Date	Note
Sound	Sound Level Meter	Brüel & Kjær	2250	3011133	06/04/2023	
	Microphone	Brüel & Kjær	4189	3086765	06/04/2023	
	Preamp	Brüel & Kjær	ZC 0032	25380	06/04/2023	
	Calibrator	Brüel & Kjær	4231	2545667	06/04/2023	
Weather Data						
Est.	<b>Duration:</b> 10 minutes			<b>Sky:</b> Sunny		
	<b>Note:</b> dBA Offset = 0.02			<b>Sensor Height (ft):</b> 5 ft		
	<b>Wind Ave Speed (mph / m/s)</b>		<b>Temperature (degrees Fahrenheit)</b>		<b>Barometer Pressure (inches)</b>	
	5		77		30.06	

**Photo of Measurement Location**





2250

Instrument:		2250
Application:		BZ7225 Version 4.7.6
Start Time:		07/31/2025 12:37:21
End Time:		07/31/2025 12:47:21
Elapsed Time:		00:10:00
Bandwidth:		1/3-octave
Max Input Level:		142.20

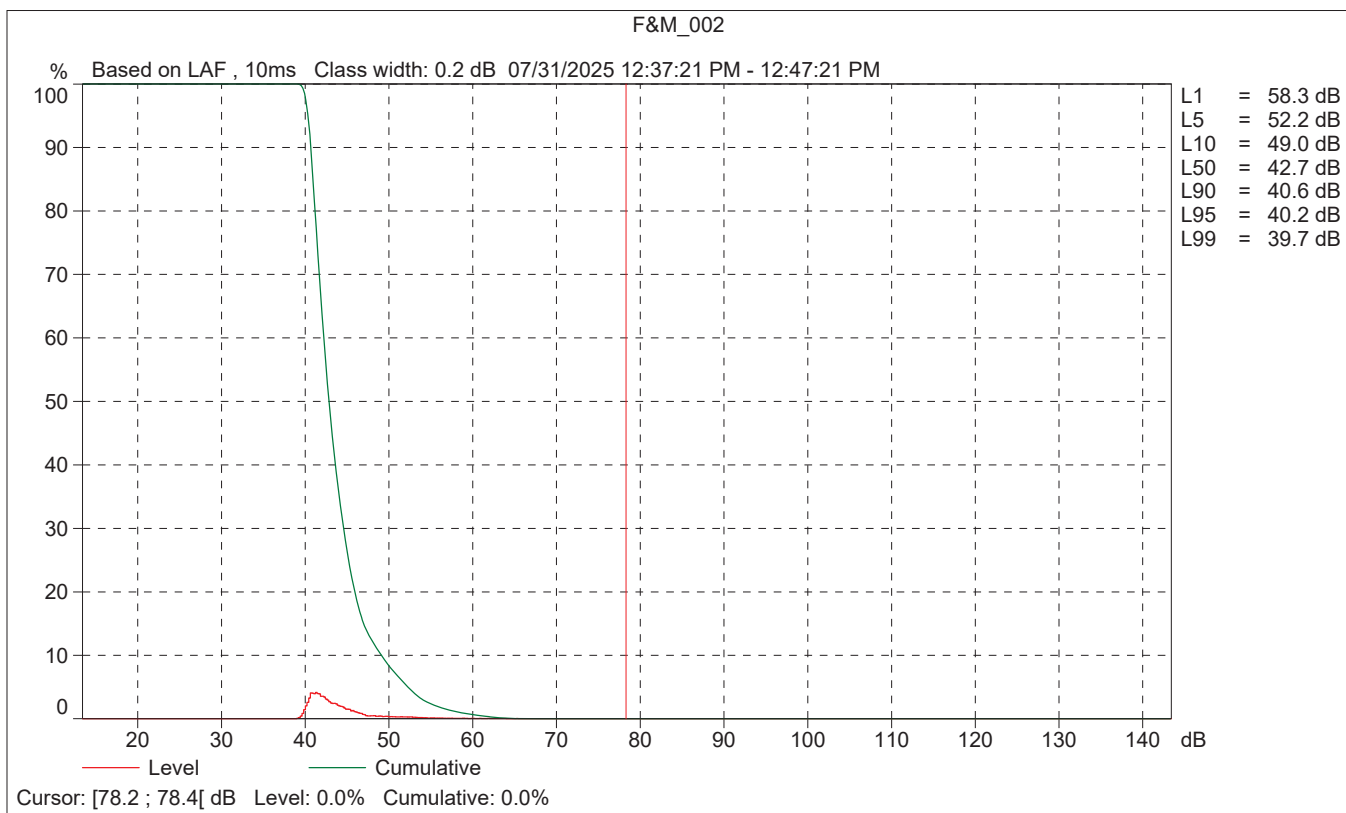
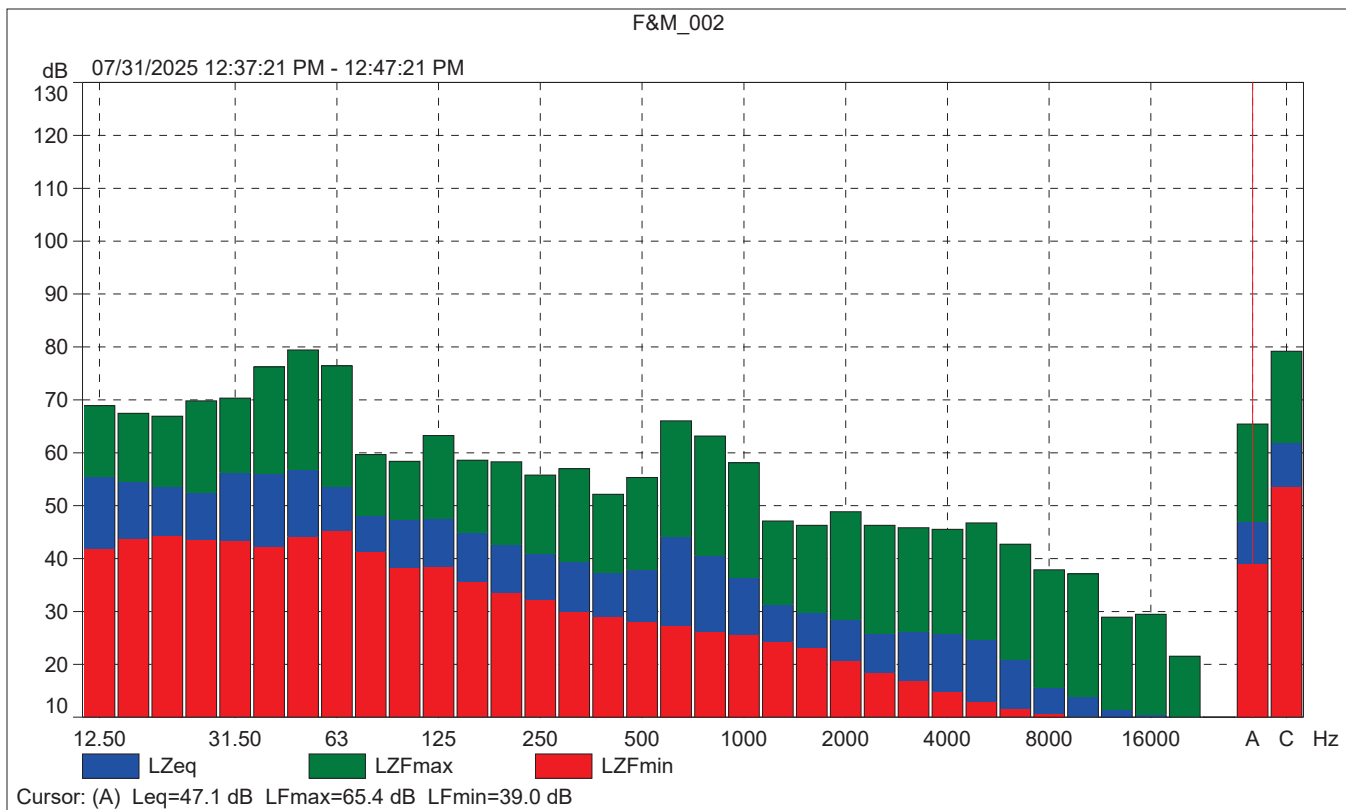
	Time	Frequency
Broadband (excl. Peak):	FSI	AC
Broadband Peak:		C
Spectrum:	FS	Z

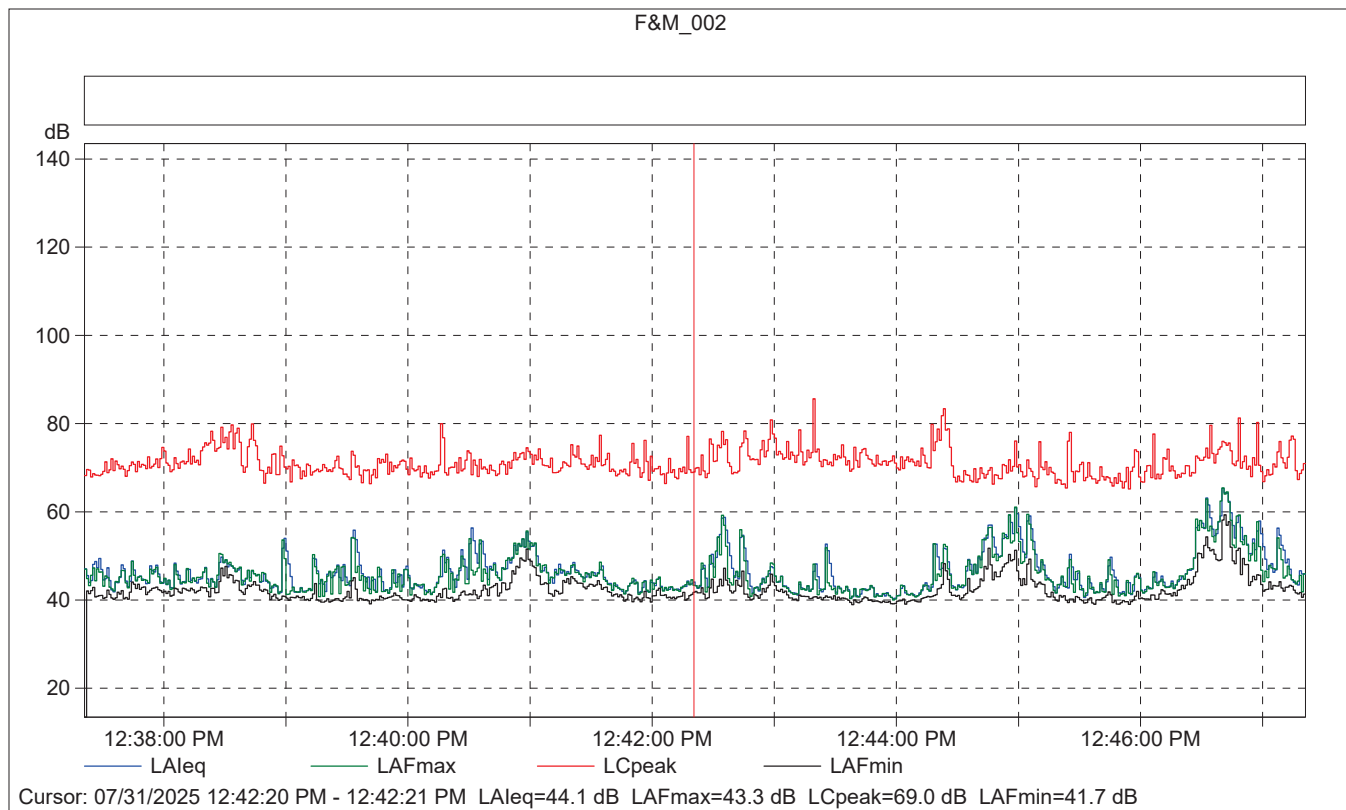
Instrument Serial Number:		3011133
Microphone Serial Number:		3086765
Input:		Top Socket
Windscreen Correction:		UA-1650
Sound Field Correction:		Free-field

Calibration Time:		07/31/2025 10:44:30
Calibration Type:		External reference
Sensitivity:		43.22599619627 mV/Pa

F&M\_002

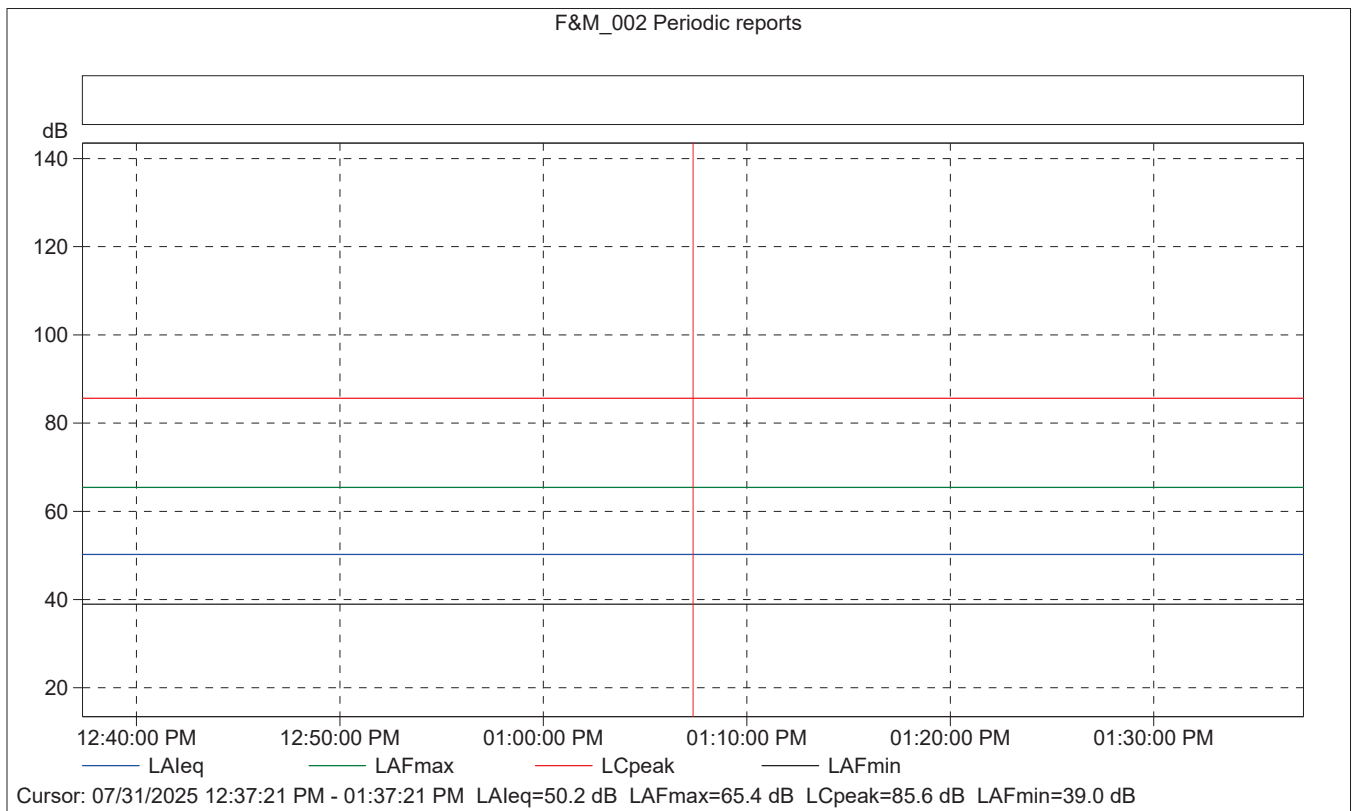
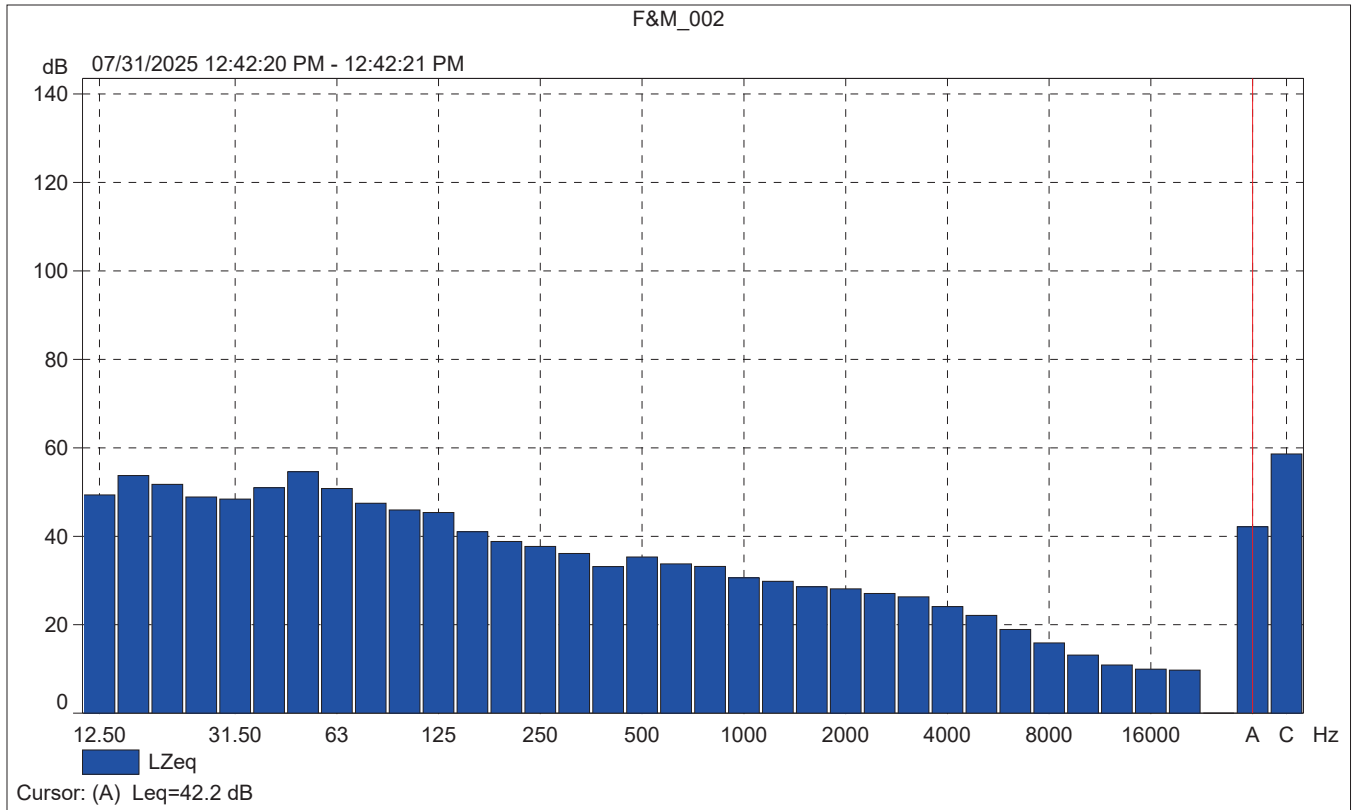
	Start time	End time	Elapsed time	Overload [%]	LAeq [dB]	LAFmax [dB]	LAFmin [dB]
Value				0.00	47.1	65.4	39.0
Time	12:37:21 PM	12:47:21 PM	0:10:00				
Date	07/31/2025	07/31/2025					





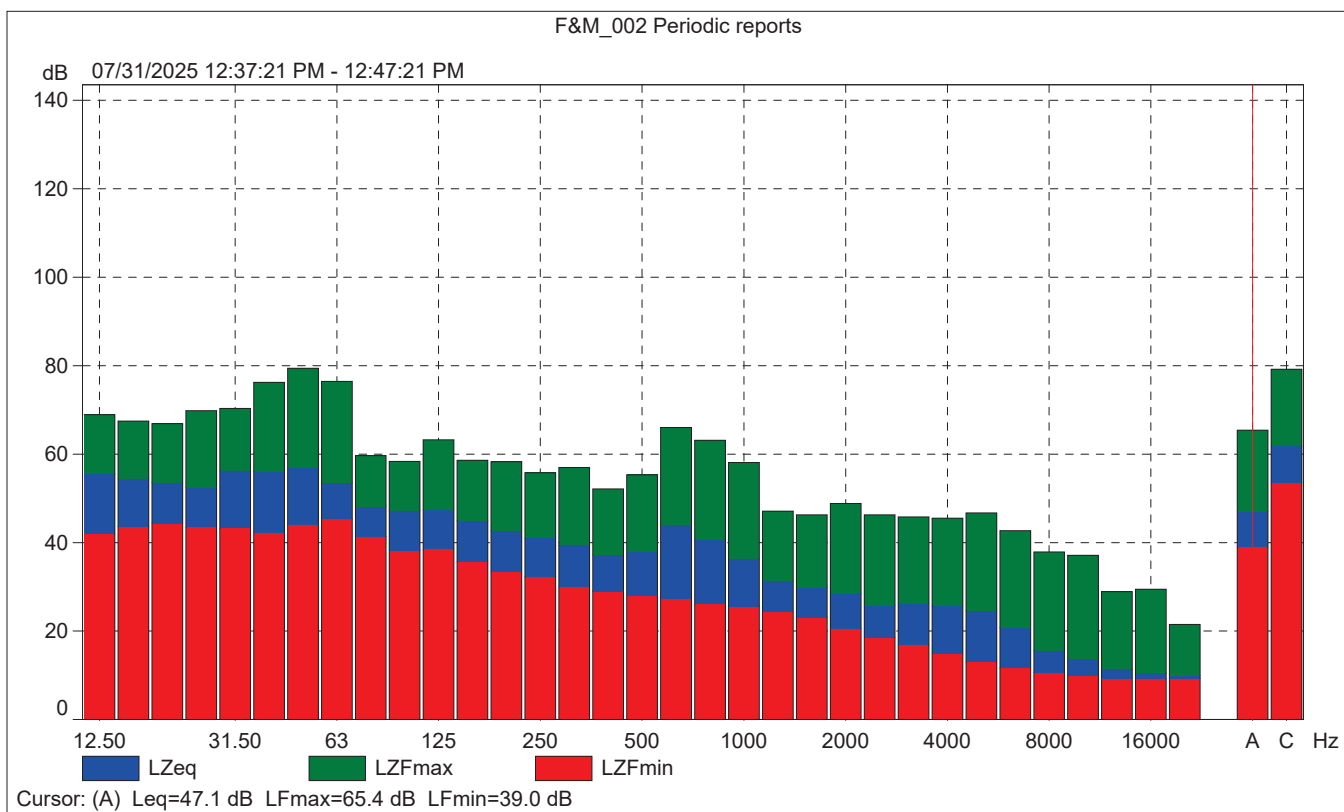
### F&M\_002

	Start time	Elapsed time	Overload [%]	LAleq [dB]	LAFmax [dB]	LAFmin [dB]
Value			0.00	44.1	43.3	41.7
Time	12:42:20 PM	0:00:01				
Date	07/31/2025					



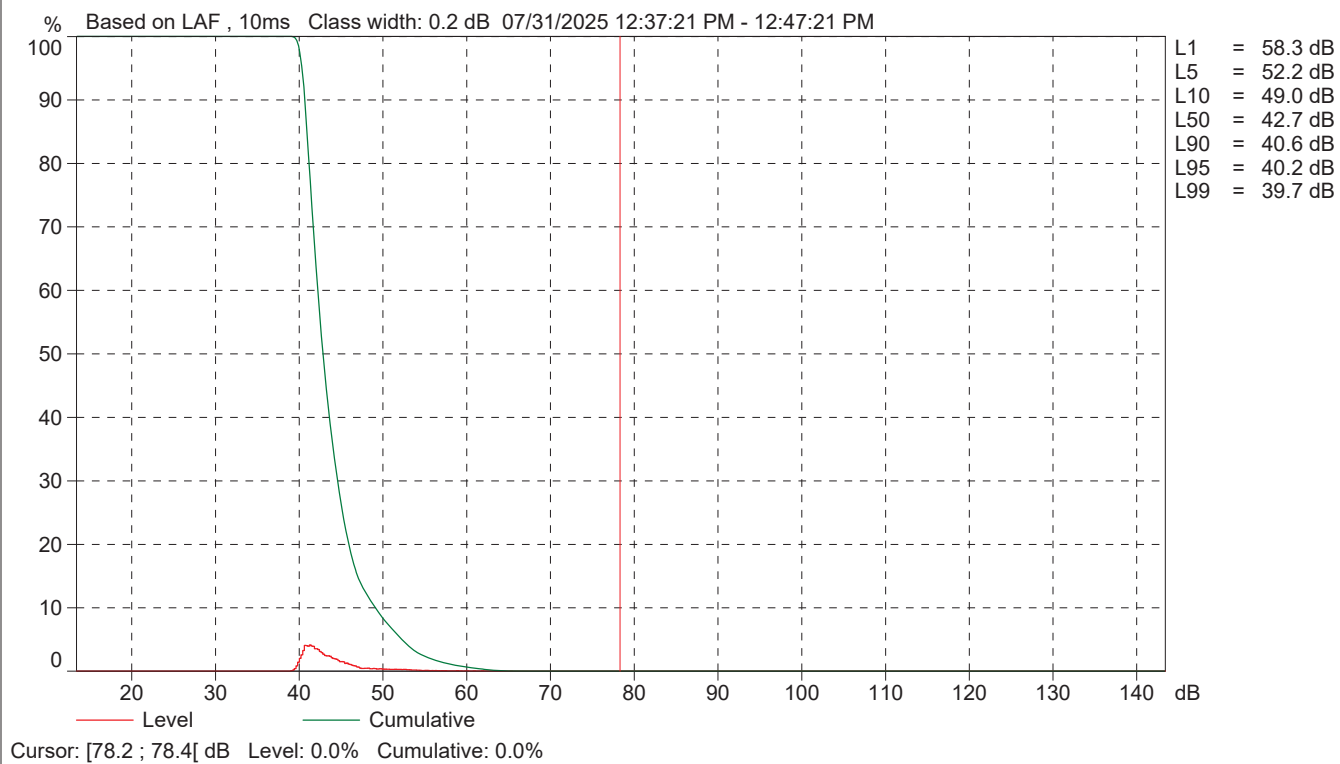
# F&M\_002 Periodic reports

	Start time	Elapsed time	Overload [%]	LAFeq [dB]	LAFmax [dB]	LAFmin [dB]
Value			0.00	50.2	65.4	39.0
Time	12:37:21 PM	0:10:00				
Date	07/31/2025					





F&M\_002 Periodic reports



Roadway Construction Noise Model (RCNM),Version 1.1

Report date: 09/23/2025  
 Case Description: Demolition

\*\*\*\* Receptor #1 \*\*\*\*

Description	Land Use	Baselines (dBA)		
		Daytime	Evening	Night
Residential	Residential	1.0	1.0	1.0

Description	Impact Device	Spec Usage (%)	Equipment			Estimated Shielding (dBA)
			Actual Lmax (dBA)	Receptor Lmax (dBA)	Distance (feet)	
Concrete Saw	No	20	89.6	150.0	0.0	
Excavator	No	40	80.7	150.0	0.0	
Excavator	No	40	80.7	150.0	0.0	
Excavator	No	40	80.7	150.0	0.0	
Dozer	No	40	81.7	150.0	0.0	
Dozer	No	40	81.7	150.0	0.0	

Equipment	Noise Limits (dBA)						Noise Limit Exceedance (dBA)							
	Calculated (dBA)		Day		Evening		Night		Day		Evening		Night	
	Lmax	Leq	Lmax	Leq	Lmax	Leq	Lmax	Leq	Lmax	Leq	Lmax	Leq	Lmax	Leq
Concrete Saw	80.0	73.0	N/A	N/A	N/A	N/A	N/A	N/A	N/A	N/A	N/A	N/A	N/A	N/A
Excavator	71.2	67.2	N/A	N/A	N/A	N/A	N/A	N/A	N/A	N/A	N/A	N/A	N/A	N/A
Excavator	71.2	67.2	N/A	N/A	N/A	N/A	N/A	N/A	N/A	N/A	N/A	N/A	N/A	N/A
Excavator	71.2	67.2	N/A	N/A	N/A	N/A	N/A	N/A	N/A	N/A	N/A	N/A	N/A	N/A
Dozer	72.1	68.1	N/A	N/A	N/A	N/A	N/A	N/A	N/A	N/A	N/A	N/A	N/A	N/A
Dozer	72.1	68.1	N/A	N/A	N/A	N/A	N/A	N/A	N/A	N/A	N/A	N/A	N/A	N/A
Total	80.0	76.9	N/A	N/A	N/A	N/A	N/A	N/A	N/A	N/A	N/A	N/A	N/A	N/A

Roadway Construction Noise Model (RCNM),Version 1.1

Report date: 09/23/2025

Case Description: Grading

\*\*\*\* Receptor #1 \*\*\*\*

Description	Land Use	Baselines (dBA)		
		Daytime	Evening	Night
Residential	Residential	1.0	1.0	1.0

Equipment							
Description	Impact	Device	Spec Usage (%)	Actual Lmax (dBA)	Receptor Lmax (dBA)	Estimated Distance (feet)	Shielding (dBA)
Grader	No	40	85.0	150.0	0.0		
Dozer	No	40	81.7	150.0	0.0		
Tractor	No	40	84.0	150.0	0.0		
Tractor	No	40	84.0	150.0	0.0		
Tractor	No	40	84.0	150.0	0.0		

Results															
Equipment	Lmax	Leq	Noise Limits (dBA)						Noise Limit Exceedance (dBA)						
			Calculated (dBA)		Day		Evening		Night		Day		Evening		Night
			Lmax	Leq	Lmax	Leq	Lmax	Leq	Lmax	Leq	Lmax	Leq	Lmax	Leq	
Excavator	71.2	67.2	N/A	N/A	N/A	N/A	N/A	N/A	N/A	N/A	N/A	N/A	N/A	N/A	
N/A															
Grader	75.5	71.5	N/A	N/A	N/A	N/A	N/A	N/A	N/A	N/A	N/A	N/A	N/A	N/A	
N/A															
Dozer	72.1	68.1	N/A	N/A	N/A	N/A	N/A	N/A	N/A	N/A	N/A	N/A	N/A	N/A	
N/A															
Tractor	74.5	70.5	N/A	N/A	N/A	N/A	N/A	N/A	N/A	N/A	N/A	N/A	N/A	N/A	
N/A															
Tractor	74.5	70.5	N/A	N/A	N/A	N/A	N/A	N/A	N/A	N/A	N/A	N/A	N/A	N/A	
N/A															
Tractor	74.5	70.5	N/A	N/A	N/A	N/A	N/A	N/A	N/A	N/A	N/A	N/A	N/A	N/A	
N/A															
Total	75.5	77.7	N/A	N/A	N/A	N/A	N/A	N/A	N/A	N/A	N/A	N/A	N/A	N/A	
N/A															

Roadway Construction Noise Model (RCNM),Version 1.1

Report date: 09/23/2025  
 Case Description: Construction

\*\*\*\* Receptor #1 \*\*\*\*

Baselines (dBA)

Description	Land Use	Daytime	Evening	Night
Residential	Residential	1.0	1.0	1.0

Equipment

Description	Impact Device	Usage (%)	Spec Lmax (dBA)	Actual Lmax (dBA)	Receptor Distance (feet)	Estimated Shielding (dBA)
Crane	No	16	80.6	150.0	0.0	
Pickup Truck	No	40	75.0	150.0	0.0	
Pickup Truck	No	40	75.0	150.0	0.0	
Pickup Truck	No	40	75.0	150.0	0.0	
Generator	No	50	80.6	150.0	0.0	
Tractor	No	40	84.0	150.0	0.0	
Tractor	No	40	84.0	150.0	0.0	
Tractor	No	40	84.0	150.0	0.0	
Welder / Torch	No	40	74.0	150.0	0.0	

Results

Equipment	Noise Limits (dBA)						Noise Limit Exceedance (dBA)							
	Calculated (dBA)		Day		Evening		Night		Day		Evening		Night	
	Lmax	Leq	Lmax	Leq	Lmax	Leq	Lmax	Leq	Lmax	Leq	Lmax	Leq	Lmax	Leq
Crane	71.0	63.0	N/A	N/A	N/A	N/A	N/A	N/A	N/A	N/A	N/A	N/A	N/A	N/A
N/A														
Pickup Truck	65.5	61.5	N/A	N/A	N/A	N/A	N/A	N/A	N/A	N/A	N/A	N/A	N/A	N/A
N/A														
Pickup Truck	65.5	61.5	N/A	N/A	N/A	N/A	N/A	N/A	N/A	N/A	N/A	N/A	N/A	N/A
N/A														
Pickup Truck	65.5	61.5	N/A	N/A	N/A	N/A	N/A	N/A	N/A	N/A	N/A	N/A	N/A	N/A
N/A														
Generator	71.1	68.1	N/A	N/A	N/A	N/A	N/A	N/A	N/A	N/A	N/A	N/A	N/A	N/A
N/A														
Tractor	74.5	70.5	N/A	N/A	N/A	N/A	N/A	N/A	N/A	N/A	N/A	N/A	N/A	N/A
N/A														
Tractor	74.5	70.5	N/A	N/A	N/A	N/A	N/A	N/A	N/A	N/A	N/A	N/A	N/A	N/A
N/A														
Tractor	74.5	70.5	N/A	N/A	N/A	N/A	N/A	N/A	N/A	N/A	N/A	N/A	N/A	N/A
N/A														

Welder / Torch N/A	64.5	60.5	N/A	N/A	N/A	N/A	N/A	N/A	N/A	N/A	N/A	N/A	N/A	N/A
Total N/A	74.5	76.7	N/A	N/A	N/A	N/A	N/A	N/A	N/A	N/A	N/A	N/A	N/A	N/A

Roadway Construction Noise Model (RCNM),Version 1.1

Report date: 09/23/2025

Case Description: Paving

\*\*\*\* Receptor #1 \*\*\*\*

Description	Land Use	Baselines (dBA)		
		Daytime	Evening	Night
Residential	Residential	1.0	1.0	1.0

Description	Impact Device	Spec Usage (%)	Equipment			Estimated Shielding (dBA)
			Actual Lmax (dBA)	Receptor Lmax (dBA)	Distance (feet)	
Paver	No	50	77.2	150.0	0.0	
Paver	No	50	77.2	150.0	0.0	
Paver	No	50	77.2	150.0	0.0	
Roller	No	20	80.0	150.0	0.0	
Roller	No	20	80.0	150.0	0.0	
Tractor	No	40	84.0	150.0	0.0	

Equipment	Noise Limits (dBA)						Noise Limit Exceedance (dBA)							
	Calculated (dBA)		Day		Evening		Night		Day		Evening		Night	
	Lmax	Leq	Lmax	Leq	Lmax	Leq	Lmax	Leq	Lmax	Leq	Lmax	Leq	Lmax	Leq
Paver	67.7	64.7	N/A	N/A	N/A	N/A	N/A	N/A	N/A	N/A	N/A	N/A	N/A	N/A
N/A														
Paver	67.7	64.7	N/A	N/A	N/A	N/A	N/A	N/A	N/A	N/A	N/A	N/A	N/A	N/A
N/A														
Paver	67.7	64.7	N/A	N/A	N/A	N/A	N/A	N/A	N/A	N/A	N/A	N/A	N/A	N/A
N/A														
Roller	70.5	63.5	N/A	N/A	N/A	N/A	N/A	N/A	N/A	N/A	N/A	N/A	N/A	N/A
N/A														
Roller	70.5	63.5	N/A	N/A	N/A	N/A	N/A	N/A	N/A	N/A	N/A	N/A	N/A	N/A
N/A														
Tractor	74.5	70.5	N/A	N/A	N/A	N/A	N/A	N/A	N/A	N/A	N/A	N/A	N/A	N/A
N/A														
Total	74.5	73.9	N/A	N/A	N/A	N/A	N/A	N/A	N/A	N/A	N/A	N/A	N/A	N/A
N/A														

Roadway Construction Noise Model (RCNM), Version 1.1

Report date: 09/23/2025

Case Description: Paving

\*\*\*\* Receptor #1 \*\*\*\*

Baselines (dBA)

Description	Land Use	Daytime	Evening	Night
Residential	Residential	1.0	1.0	1.0

Equipment

Description	Impact Device	Spec Usage (%)	Actual Lmax (dBA)	Receptor Lmax (dBA)	Estimated Distance (feet)	Shielding (dBA)
Compressor (air)	No	40	77.7	150.0	0.0	

Results

Equipment Lmax Leq	Noise Limits (dBA)						Noise Limit Exceedance (dBA)							
	Calculated (dBA)		Day		Evening		Night		Day		Evening		Night	
	Lmax	Leq	Lmax	Leq	Lmax	Leq	Lmax	Leq	Lmax	Leq	Lmax	Leq	Lmax	Leq
Compressor (air)	68.1	64.1	N/A	N/A	N/A	N/A	N/A	N/A	N/A	N/A	N/A	N/A	N/A	N/A
Total	68.1	64.1	N/A	N/A	N/A	N/A	N/A	N/A	N/A	N/A	N/A	N/A	N/A	N/A