



May 30, 2025

Mike Hawkins
 P.O. Box 3463
 Yountville, CA 94599

RE: Application Completeness Determination, B&F Farms Vineyards Agricultural Erosion Control Plan (ECPA) #P25-00029-ECPA 7335 St. Helena Highway: APNs 034-030-029 and -030 (WRA Project #340085)

Mr. Hawkins,

This letter addresses the requests from the Napa County regarding biological resources outlined in their letter *Application Completeness Determination, B&F Farms Vineyards Conversion Agricultural Erosion Control Plan (ECPA) #P25-00029-ECPA 7335 St. Helena Highway APNs 034-030-029 & -030* dated March 5, 2025. Under #1f Biological Resources in the letter, Napa County outlined five additional items (i. through v.); the following addresses four of these five as follows.

(Napa County text in ***BOLD ITALICS***)

1f. Biological Resource Information: Please provide an update or addendum to the Biological Resource Survey (WRA Inc., October 2024) that includes the following:

i. An inventory of trees with a 6-inch diameter at breast height (DBH) or greater proposed to be removed that includes species and DBH.

On May 28, 2025, WRA conducted a tree inventory throughout the proposed vineyard grading limits (Project Area). Each tree over 6 inches in DBH within the Project Area was typed to species, measures for DBH, and evaluated for unique habitat values (i.e., bat maternity roost, see below). Figures A-2 through A-6 illustrates the location of the inventoried trees, while Table 1 summarizes the results of the tree inventory, with all collected data included in Attachment B.

Table 1. Tree Inventory Summary Results

SCIENTIFIC NAME	COMMON NAME	TOTAL	AVERAGE DBH (in.)	RANGE DBH (in.)
<i>Arbutus menziesii</i>	Pacific madrone	89	15	6 – 61
<i>Pinus attenuata</i>	knobcone pine	35	8	6 – 24
<i>Pseudotsuga menziesii</i>	Douglas fir	4	12	7 – 18
<i>Quercus agrifolia</i>	coast live oak	174	23	6 – 92
<i>Quercus douglasii</i>	blue oak	1	25	25 – 25
<i>Quercus kelloggii</i>	California black oak	38	18	7 – 41
<i>Quercus lobata</i>	valley oak	1	15	15 – 15
<i>Umbellularia californica</i>	California bay	23	17	6 – 82

ii. The locations of any valley oak trees and any other trees with high biological or ecological value, including but not limited to acorn storage trees, within the project area, and describe the extent of valley oak trees and trees with high ecological value within the overall holding.

As noted, WRA conducted a tree inventory on May 28, 2025, included in this inventory was species and those trees with high ecological value. There is only one valley oak (*Quercus lobata*) scheduled for removal. It is a relatively young tree (15-inch DBH) without noteworthy high biological or ecological value. It does not contain substrates sufficient for bat roosting and is not a granary tree.

As noted below (iii), there are 11 trees with features that may provide suitable maternity roosting for bats. There were no other trees observed with unique biological or ecological values (i.e., granaries). Additionally, there are more trees outside of the Project Area that contain wildlife habitat values which will be preserved. Those trees and woodland outside of the Project Area will continue to provide local wildlife with a myriad of habitat values such as maternity roosting, nesting, cover, foraging, granary, etc. in perpetuity. Finally, there are numerous valley oaks (*Quercus lobata*) located outside of the Project Area that will be preserved in perpetuity.

No further actions are recommended for valley oak and/or habitat trees.

iii. The locations of potential bat habitat trees located within the project area and the extent of potential bat habitat trees within the holding.

A daytime roost survey was performed concurrently with the tree survey on May 28, 2025. The survey assessed all trees and substrates within the proposed vineyard blocks to determine if bat roosting habitat was present. This survey was completed by walking the entire Project Area, and surveying each tree scheduled for removal. During the survey the biologist noted conditions that may be favorable or unfavorable for bat use such as thermal conditions, frequency of disturbance, and evidence of potential predators. All trees were also investigated for fissures, cracks, or hollows that could provide roosting substrate for bats.

Most of the trees scheduled for removal have no potential to support bats, including and particularly, maternity roosts. Most trees are small to medium diameter coast live oak (*Quercus agrifolia*), Pacific madrone (*Arbutus menziesii*), California black oak (*Quercus kelloggii*), and knobcone pine (*Pinus attenuata*), which are healthy and do not provide suitable mass to maintain stable thermal conditions required by roosting bats nor do they contain substrates (e.g., exfoliating bark, hollows, fissures) in which bats can take cover.

However, there are 11 large coast live oaks (*Quercus agrifolia*) located within the proposed vineyard grading limits that have the potential to support maternity roosts for bats. These trees have substantial holes, cavities, and/or fissures in the bark, trunks, and/or large branches sufficient to provide roosting substrate. These trees should be removed and trimmed between August 31 and October 15. Bat habitat trees shall be removed or trimmed in a two-phased system conducted over two consecutive days. The first day (in the afternoon), limbs and branches will be removed by a tree cutter using chainsaws only. Limbs with cavities, crevices and deep bark fissures will be avoided, and only branches or

limbs without those features will be removed. On the second day, the entire tree will be removed. All felled trees shall remain on the ground for at least 24 hours prior to disposal to allow any present bats within the trees to escape. Prior to overall construction of the vineyards, including tree removal, WRA biologists will clearly mark the habitat trees for construction personnel.

A targeted inventory of trees, including wildlife habitat trees, was not conducted outside of the Project Area; however, there are numerous trees with high ecological value outside of the blocks. These trees will continue to provide these valuable functions for local wildlife and will be preserved as part of the required canopy/woodland retention.

No further actions than those given here are recommended for potential bat maternity roost trees.

iv. An assessment of the quality, in terms of biological/ecologic and foraging value, of the various Plant Communities or Cover types occurring on the property and project area, in particular oak woodlands within the project area and within the holding. The assessment should also focus on the biological value of potential preservation areas prescribed pursuant to NCC Section 18.108.020(D) as it relates to biological value of the project area and avoided areas.

As described in the BRRS report ten land cover types are present within the Study Area: developed, coyote brush scrub, chamise chaparral, coast live oak woodland, knobcone pine woodland, Douglas fir forest, man-made pond, seasonal wetland, and streams. The Project Area (i.e., new vineyard blocks and clearing limits) has been intentionally sited to avoid all sensitive aquatic resources and will impact only developed, coyote brush scrub, coast live oak woodland, and knobcone pine forest land cover types.

The developed areas provide very little habitat value for wildlife and native flora. Native wildlife accustomed to development and human disturbance (e.g., ground squirrel (*Otospermophilus beecheyi*), black-tailed deer (*Odocoileus hemionus columbianus*), house finch (*Haemorhous mexicanus*)) may occur in and utilize the developed areas.

The non-native grasslands and coyote brush scrub provide foraging habitat for a variety of wildlife such as California quail (*Callipepla californica*), red-tailed hawk (*Buteo jamaicensis*), and black-tailed deer (*Odocoileus hemionus columbianus*). They are significantly invaded by numerous aggressive non-native herbaceous species including Italian thistle (*Carduus pycnocephalus*), bull thistle (*Cirsium vulgare*), orchard grass (*Dactylis glomerata*), and harding grass (*Phalaris aquatica*). The Study Area's non-native grasslands and coyote brush scrub provide habitat values (e.g., foraging, cover, nesting, dispersal) on par with other like land covers throughout Napa County, and those on-site remainder grasslands/scrublands will continue to provide such habitat for local wildlife.

The Study Area's oak woodlands vary in quality throughout the site. Overall, they lack vertical heterogeneity with very little abundance and cover of native shrubs and saplings in the understory. Although not abundant, there is some regeneration on the edges and openings of the woodlands. Those few shrubs that are present in the woodlands include poison oak (*Toxicodendron diversilobum*) and toyon (*Heteromeles arbutifolia*). The understories are dominated by non-native herbaceous species particularly false brome (*Brachypodium distachyon*), ripgut brome (*Bromus diandrus*), dogtail grass (*Cynosurus echinatus*), and hedge parsley (*Torilis arvensis*).

The age cohorts of the woodlands are consistent throughout the subject property, with numerous large, old trees present within and outside of the proposed vineyard grading limits. The canopy provides cover, nesting, and foraging resources for a variety of woodland birds and small mammals, including several trees with substrate that may provide maternity roosting for bats and granary habitat for woodpeckers and squirrels; however, there are only 11 trees in the Project Area containing structures, sizes, and stand position to potentially support maternity roosts, and there are no granaries trees in the Project Area. The woodlands within the proposed vineyard grading limits are not substantively different from those located outside of the Project Area and in all cases are contiguous with such. The remainder woodlands will continue to provide nesting, foraging, and cover resources for local wildlife, particularly birds and bats.

The knobcone pine forest is an even-aged stand of knobcone pine (*Pinus attenuata*) with an extremely depauperate understory. These stands frequently require either low-severity fire or mechanical thinning to reduce competition on individual trees, provide sunlight for shrubs and herbaceous species, and reduce the threat of pests, disease, and high-severity fire. This is particularly true of the stand that will be partially removed as part of the vineyard clearing. Further downslope and away from the Project Area, the knobcone pine forest contains larger trees with a more open canopy and greater vertical heterogeneity.

In summary, the preserved land cover types within the subject property on balance or greater for providing biological and ecological values than those within the Project Area.

No further actions are recommended for habitat quality.

v. Confirmation that the proposed wildlife exclusion fencing (i.e. deer fencing) shown in Figure 3 of the project plans (PPI Engineering, January 2025) and overall footprint has been reviewed and assessed. As proposed the overall footprint and fencing will eliminate east-west wildlife movement through the holding. Provide additional assessment and recommendations as necessary.

It is WRA's understanding that PPI Engineering has removed a single vineyard block (0.4 acre) and reconfigured the wildlife fencing (Figure A-7). This removal and reconfiguration will provide continued east-west wildlife movement. Likely, local wildlife has some degree of tolerance of human activity due to the presence of vineyards, rural residences, and general ranching activities. Additionally, the subject north-south ridgeline will remain open immediately south of the property where the slopes appear to be too steep for vineyard development.

No further actions are recommended for wildlife movement.

Please contact me if you have questions or require additional information. Sincerely,

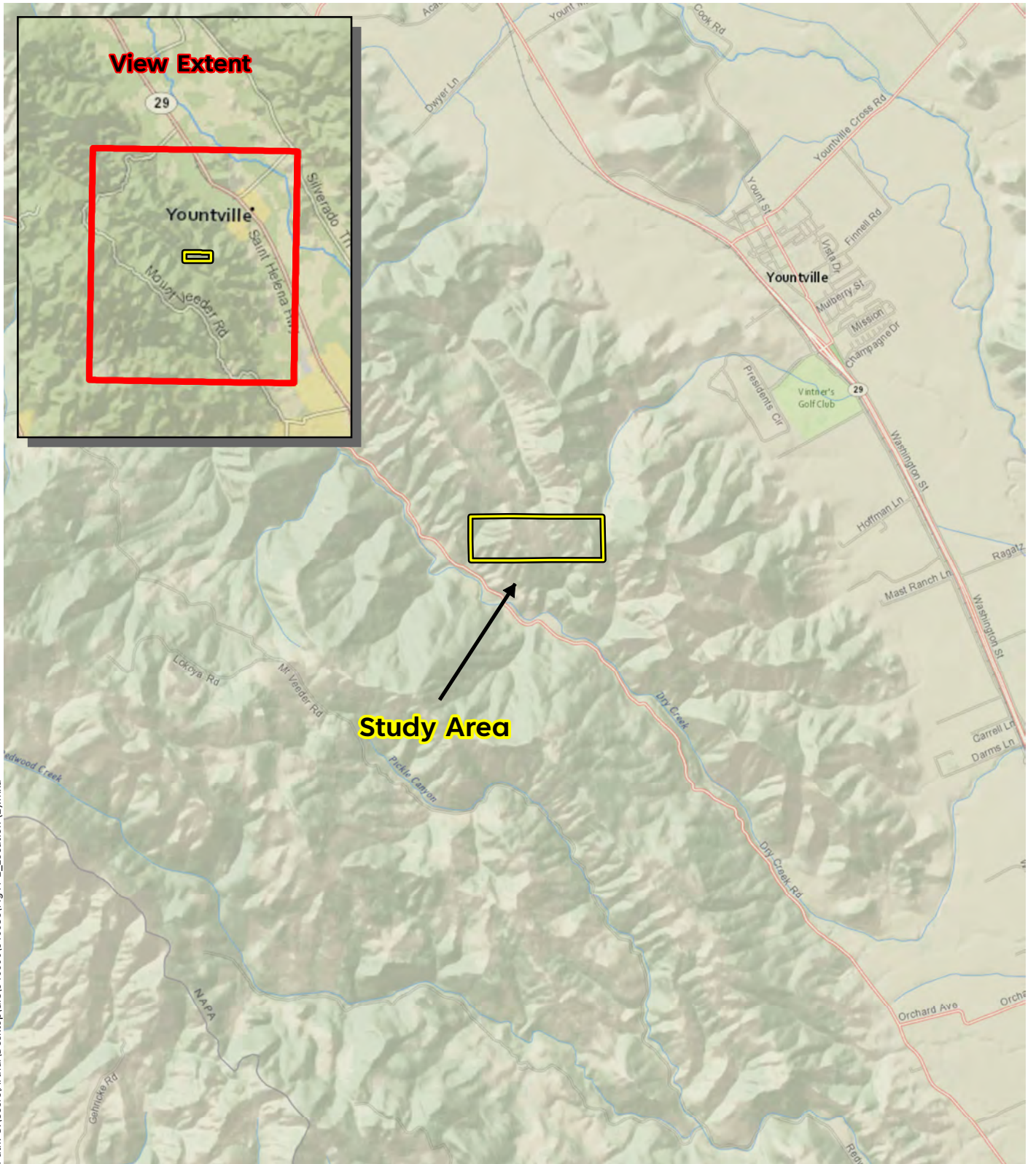


Aaron Arthur
Associate Biologist
WRA, Inc.
arthur@wra-ca.com

ENCLOSURES:

- Attachment A: Figures
- Attachment B: Tree Inventory
- Attachment C: Observed Wildlife Species May 2025
- Attachment D: Representative Photographs

ATTACMENT A – FIGURES

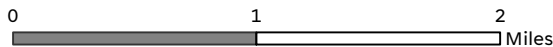


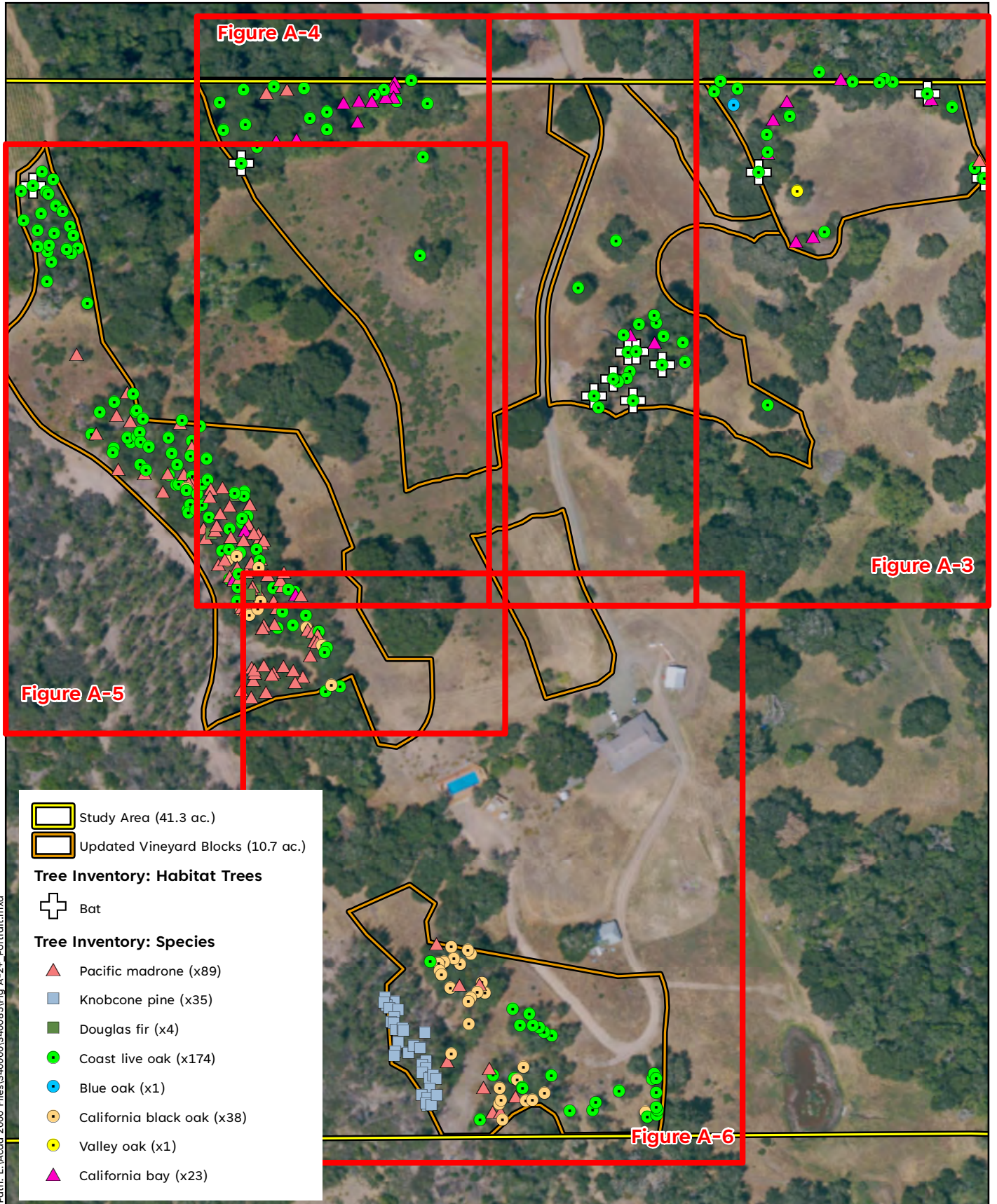
Path: C:\Users\Arthur\Desktop\GIS\340000\3400085\Fig A-1_Location (1).mxd

Sources: National Geographic, WRA | Prepared By: Arthur, 9/19/2024

Figure A-1. Study Area Location

Demele Ranch
Napa County, CA



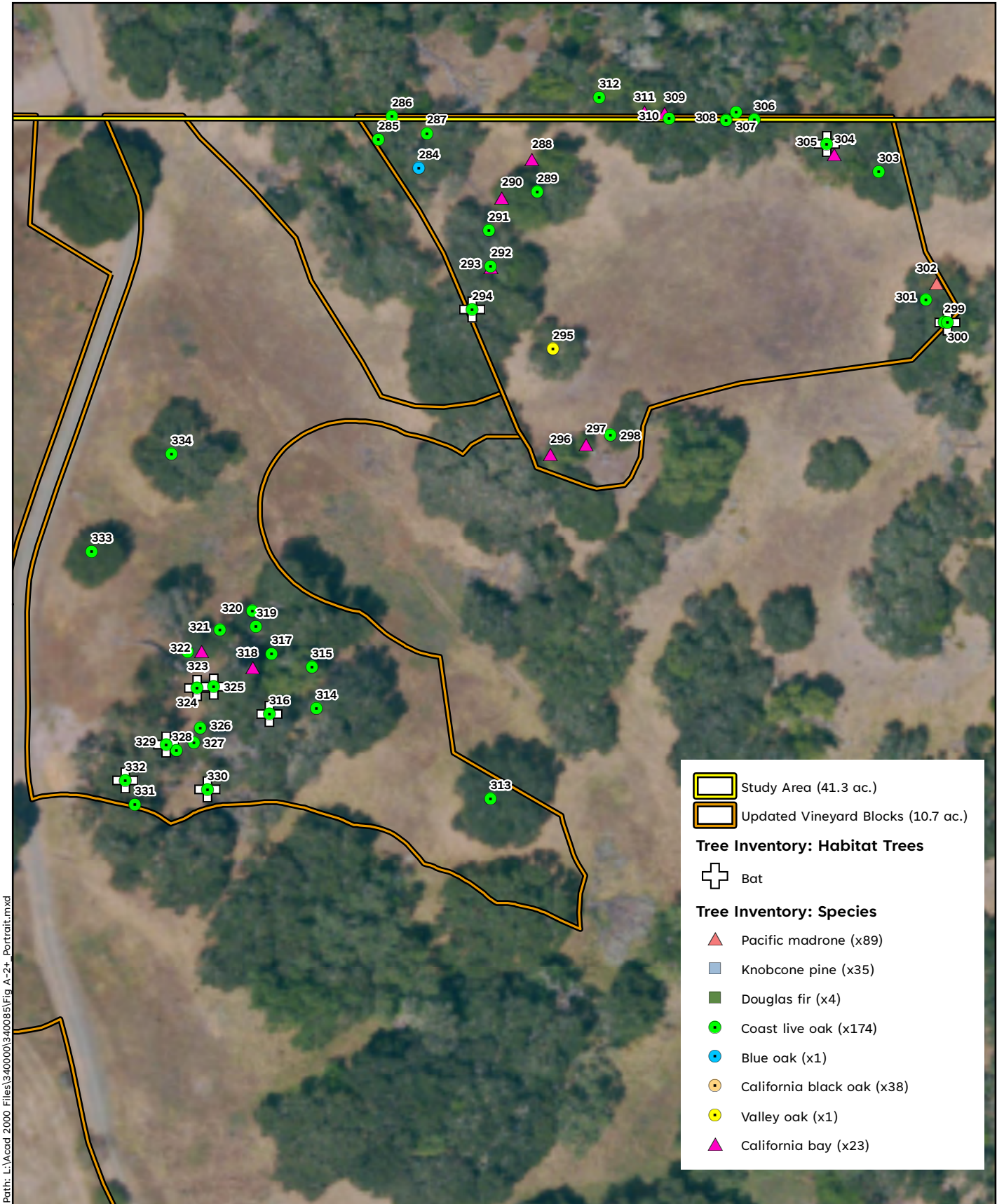


Sources: DigitalGlobe 2016 Aerial, WRA | Prepared By: Arthur, 5/30/2025

Figure A-2. Tree Inventory: Overview

Demele Ranch
Napa County, CA

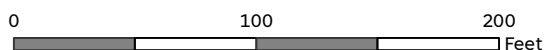


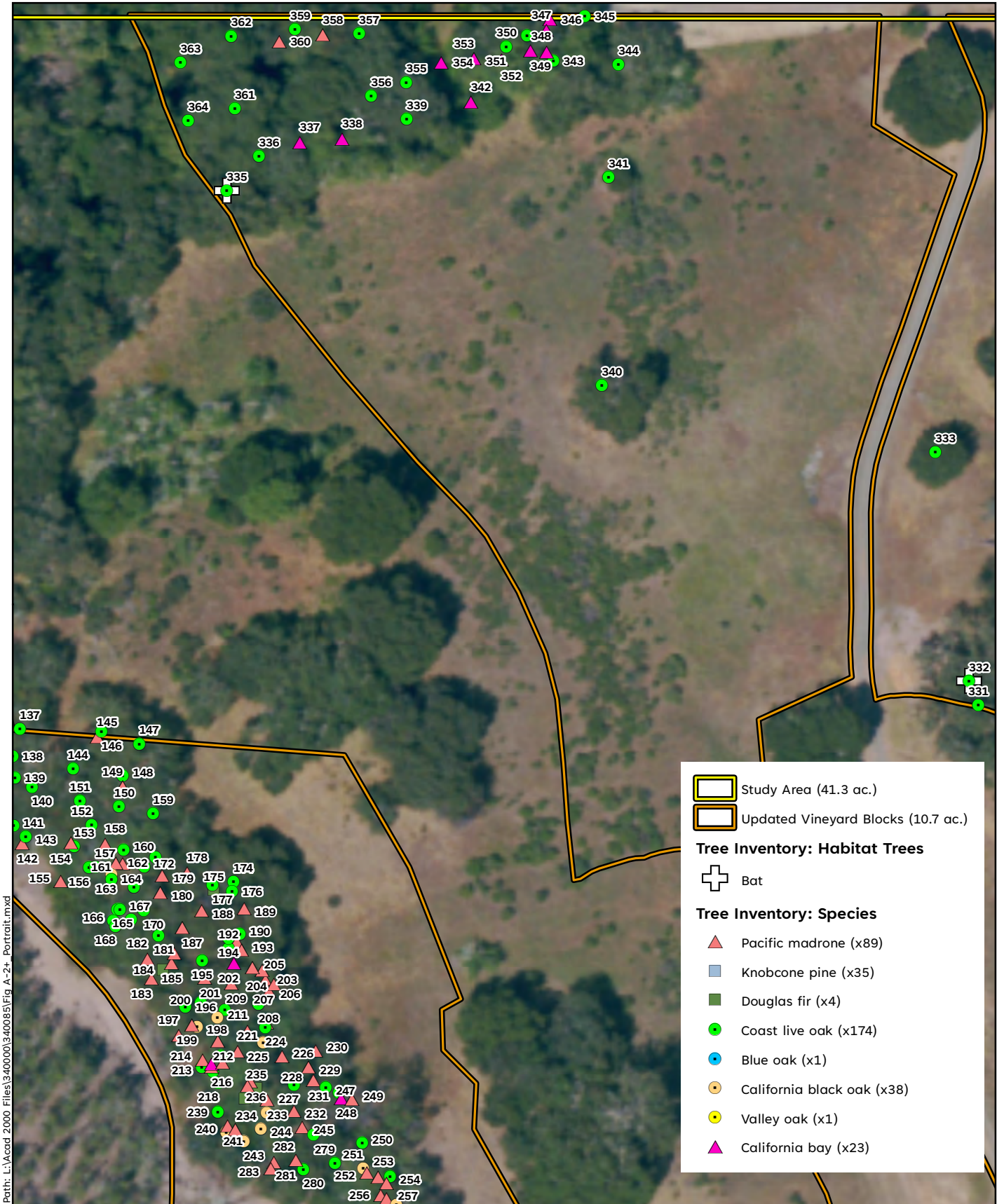


Sources: DigitalGlobe 2016 Aerial, WRA | Prepared By: Arthur, 5/30/2025

Figure A-3. Tree Inventory: Close-up

Demele Ranch
 Napa County, CA

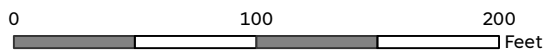


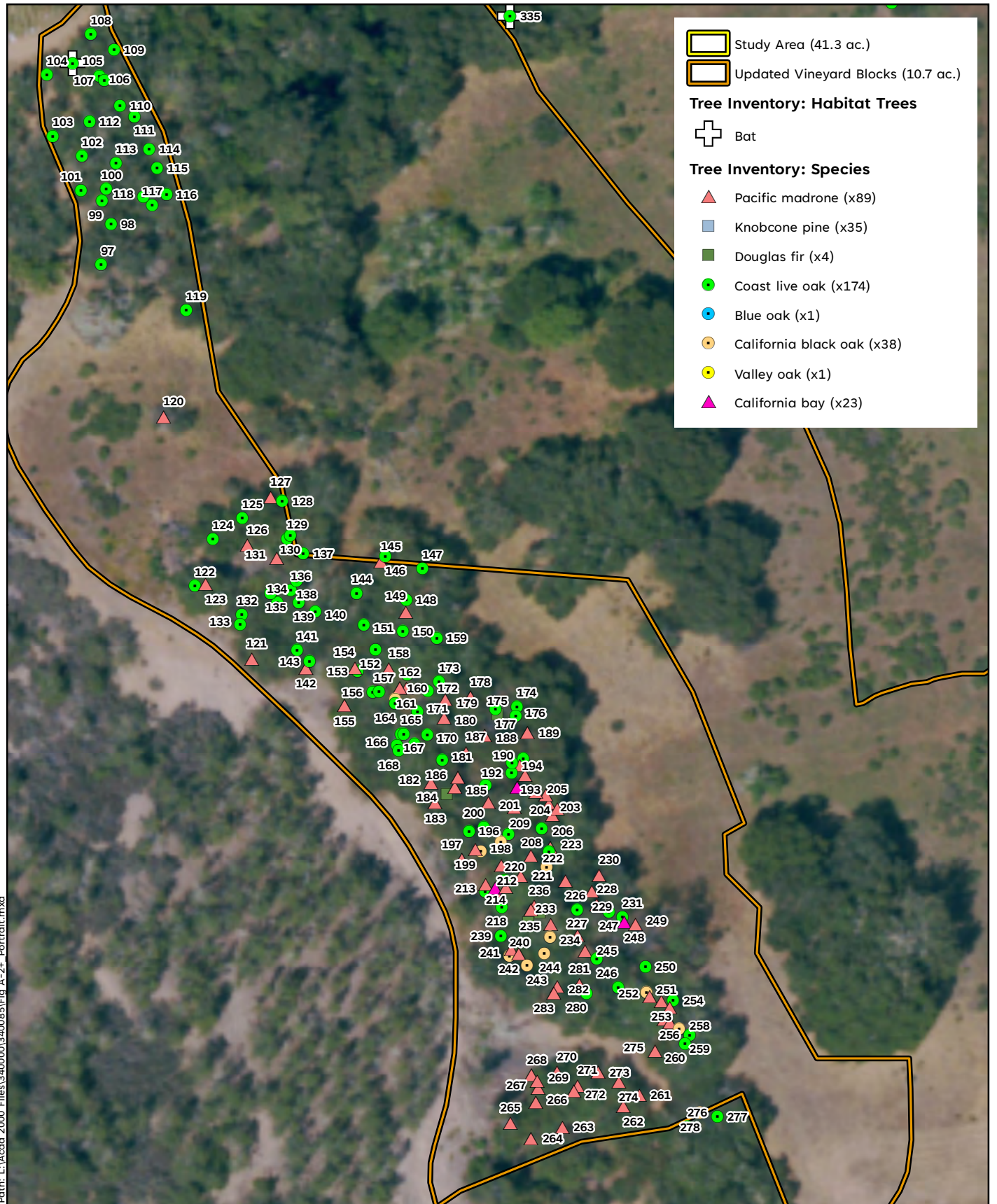


Sources: DigitalGlobe 2016 Aerial, WRA | Prepared By: Arthur, 5/30/2025

Figure A-4. Tree Inventory: Close-up

Demele Ranch
 Napa County, CA

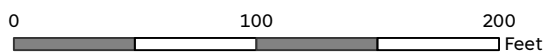


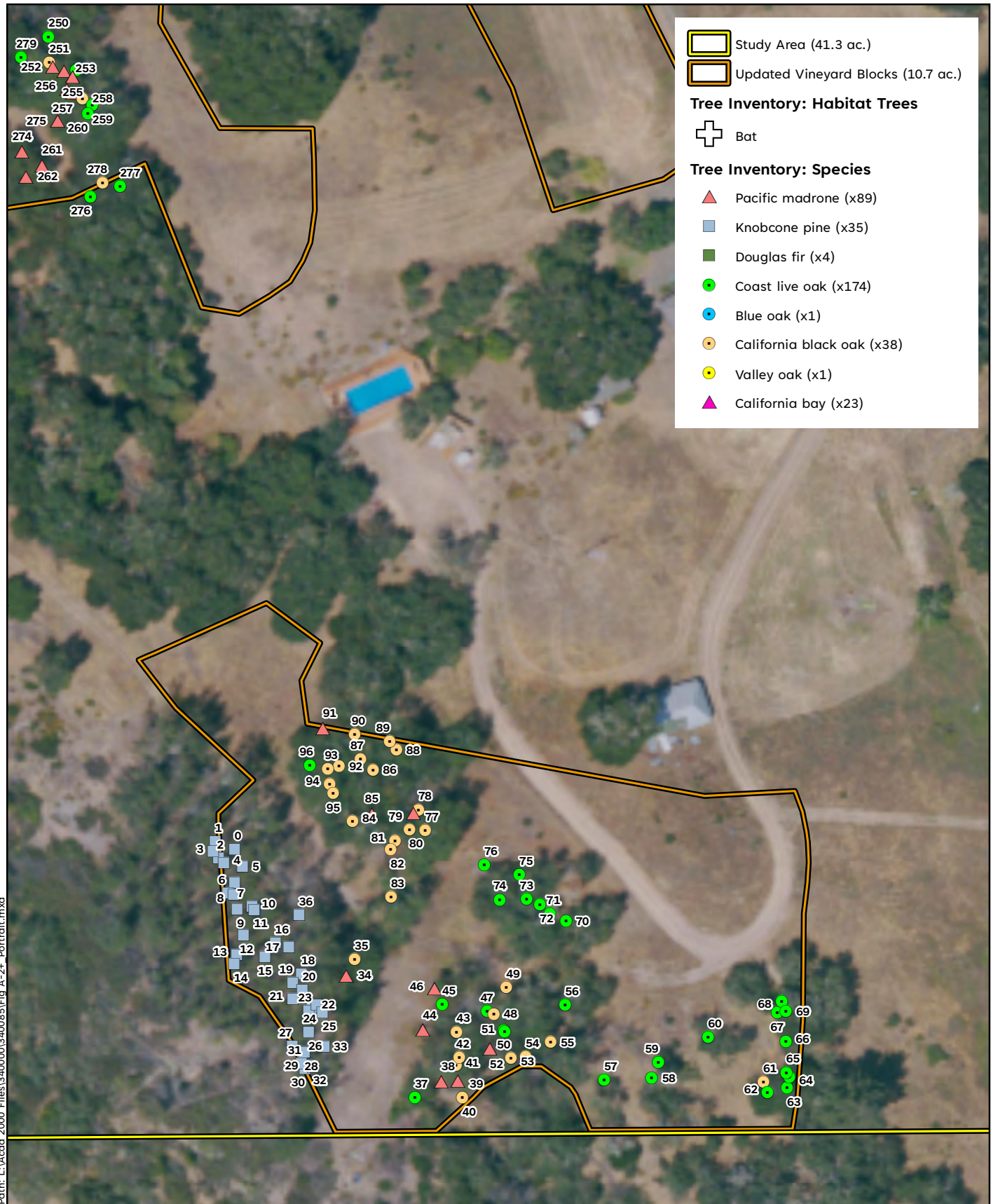


Sources: DigitalGlobe 2016 Aerial, WRA | Prepared By: Arthur, 5/30/2025

Figure A-5. Tree Inventory: Close-up

Demele Ranch
 Napa County, CA

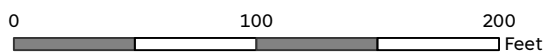


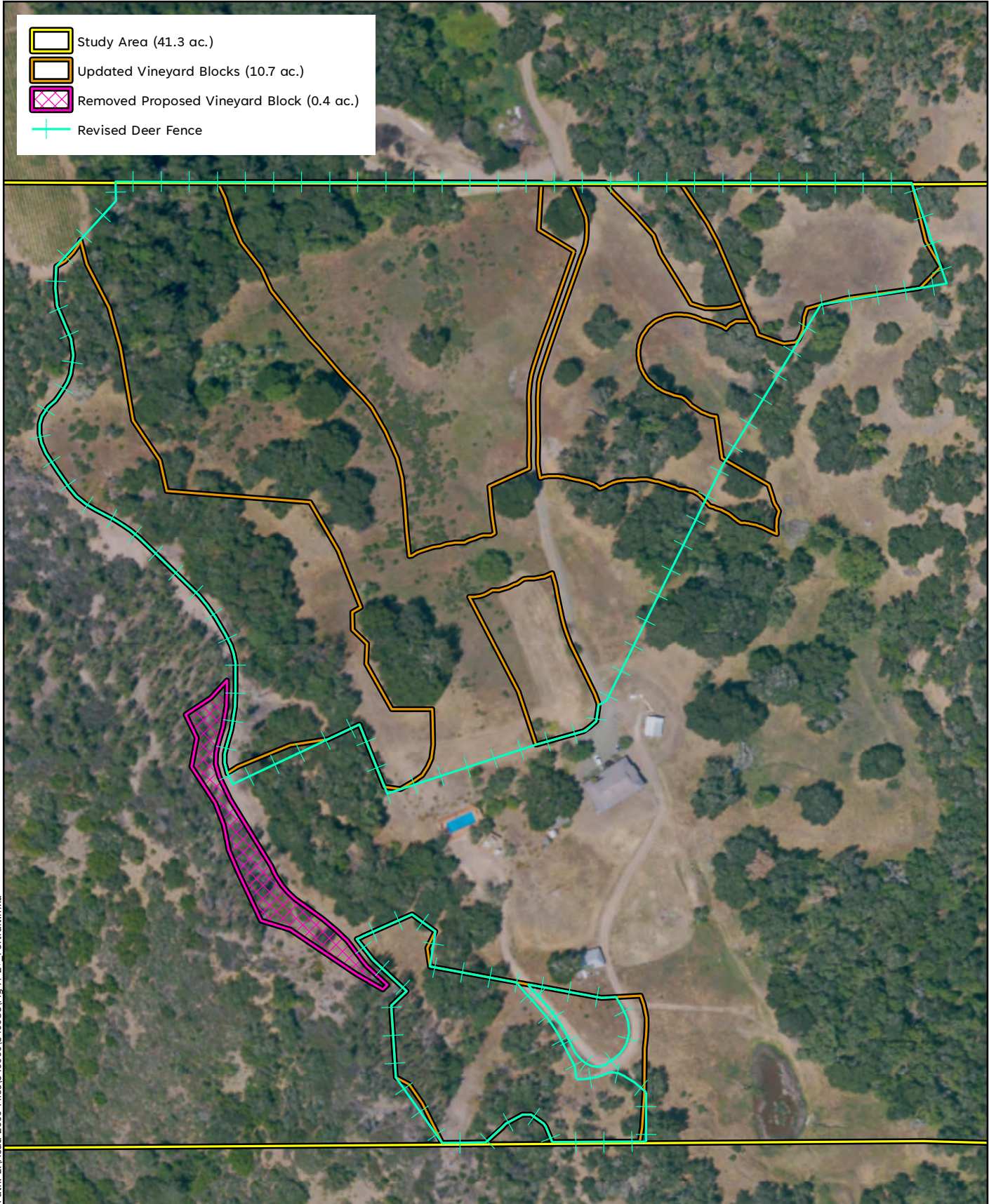


Sources: DigitalGlobe 2016 Aerial, WRA | Prepared By: Arthur, 5/30/2025

Figure A-6. Tree Inventory: Close-up

Demele Ranch
 Napa County, CA



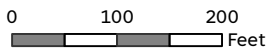


Path: L:\Acad 2000 Files\340000\340085\Fig A-2+ Portrait.mxd

Sources: DigitalGlobe 2016 Aerial, WRA | Prepared By: Arthur, 5/30/2025

Figure A-7. Revised Vineyard Blocks and Deer Fence

Demele Ranch
Napa County, CA



ATTACHMENT B – TREE INVENTORY

Table B-1. Tree Inventory

TREE #	SCIENTIFIC NAME	COMMON NAME	DBH 1	DBH 2	DBH 3	DBH 4	DBH 5	DBH SUM	HABITAT NOTES
0	<i>Pinus attenuata</i>	knobcone pine	10	0	0	0	0	10	
1	<i>Pinus attenuata</i>	knobcone pine	7	0	0	0	0	7	
2	<i>Pinus attenuata</i>	knobcone pine	6	0	0	0	0	6	
3	<i>Pinus attenuata</i>	knobcone pine	7	0	0	0	0	7	
4	<i>Pinus attenuata</i>	knobcone pine	7	0	0	0	0	7	
5	<i>Pinus attenuata</i>	knobcone pine	6	0	0	0	0	6	
6	<i>Pinus attenuata</i>	knobcone pine	7	0	0	0	0	7	
7	<i>Pinus attenuata</i>	knobcone pine	8	0	0	0	0	8	
8	<i>Pinus attenuata</i>	knobcone pine	6	0	0	0	0	6	
9	<i>Pinus attenuata</i>	knobcone pine	11	0	0	0	0	11	
10	<i>Pinus attenuata</i>	knobcone pine	9	0	0	0	0	9	
11	<i>Pinus attenuata</i>	knobcone pine	8	0	0	0	0	8	
12	<i>Pinus attenuata</i>	knobcone pine	8	0	0	0	0	8	
13	<i>Pinus attenuata</i>	knobcone pine	6	0	0	0	0	6	
14	<i>Pinus attenuata</i>	knobcone pine	7	0	0	0	0	7	
15	<i>Pinus attenuata</i>	knobcone pine	6	0	0	0	0	6	
16	<i>Pinus attenuata</i>	knobcone pine	7	0	0	0	0	7	
17	<i>Pinus attenuata</i>	knobcone pine	7	0	0	0	0	7	
18	<i>Pinus attenuata</i>	knobcone pine	8	0	0	0	0	8	
19	<i>Pinus attenuata</i>	knobcone pine	7	0	0	0	0	7	
20	<i>Pinus attenuata</i>	knobcone pine	8	0	0	0	0	8	
21	<i>Pinus attenuata</i>	knobcone pine	7	0	0	0	0	7	
22	<i>Pinus attenuata</i>	knobcone pine	7	0	0	0	0	7	
23	<i>Pinus attenuata</i>	knobcone pine	7	0	0	0	0	7	
24	<i>Pinus attenuata</i>	knobcone pine	7	0	0	0	0	7	
25	<i>Pinus attenuata</i>	knobcone pine	9	0	0	0	0	9	
26	<i>Pinus attenuata</i>	knobcone pine	6	0	0	0	0	6	
27	<i>Pinus attenuata</i>	knobcone pine	7	0	0	0	0	7	
28	<i>Pinus attenuata</i>	knobcone pine	6	0	0	0	0	6	
29	<i>Pinus attenuata</i>	knobcone pine	7	0	0	0	0	7	
30	<i>Pinus attenuata</i>	knobcone pine	8	0	0	0	0	8	
31	<i>Pinus attenuata</i>	knobcone pine	8	0	0	0	0	8	
32	<i>Pinus attenuata</i>	knobcone pine	9	0	0	0	0	9	

TREE #	SCIENTIFIC NAME	COMMON NAME	DBH 1	DBH 2	DBH 3	DBH 4	DBH 5	DBH SUM	HABITAT NOTES
33	<i>Pinus attenuata</i>	knobcone pine	8	0	0	0	0	8	
34	<i>Arbutus menziesii</i>	Pacific madrone	7	6	6	5	0	24	
35	<i>Quercus kelloggii</i>	California black oak	17	0	0	0	0	17	
36	<i>Pinus attenuata</i>	knobcone pine	12	12	0	0	0	24	
37	<i>Quercus agrifolia</i>	coast live oak	14	13	0	0	0	27	
38	<i>Arbutus menziesii</i>	Pacific madrone	10	0	0	0	0	10	
39	<i>Arbutus menziesii</i>	Pacific madrone	12	0	0	0	0	12	
40	<i>Quercus kelloggii</i>	California black oak	15	0	0	0	0	15	
41	<i>Quercus kelloggii</i>	California black oak	10	0	0	0	0	10	
42	<i>Quercus kelloggii</i>	California black oak	14	12	0	0	0	26	
43	<i>Quercus kelloggii</i>	California black oak	10	0	0	0	0	10	
44	<i>Arbutus menziesii</i>	Pacific madrone	15	0	0	0	0	15	
45	<i>Quercus agrifolia</i>	coast live oak	16	0	0	0	0	16	
46	<i>Arbutus menziesii</i>	Pacific madrone	10	0	0	0	0	10	
47	<i>Quercus agrifolia</i>	coast live oak	8	6	0	0	0	14	
48	<i>Quercus kelloggii</i>	California black oak	12	11	0	0	0	23	
49	<i>Quercus kelloggii</i>	California black oak	21	0	0	0	0	21	
50	<i>Quercus agrifolia</i>	coast live oak	6	0	0	0	0	6	
51	<i>Quercus agrifolia</i>	coast live oak	10	8	0	0	0	18	
52	<i>Arbutus menziesii</i>	Pacific madrone	10	0	0	0	0	10	
53	<i>Quercus kelloggii</i>	California black oak	11	0	0	0	0	11	
54	<i>Quercus kelloggii</i>	California black oak	13	6	0	0	0	19	
55	<i>Quercus kelloggii</i>	California black oak	17	0	0	0	0	17	
56	<i>Quercus agrifolia</i>	coast live oak	14	12	0	0	0	26	
57	<i>Quercus agrifolia</i>	coast live oak	13	10	0	0	0	23	
58	<i>Quercus agrifolia</i>	coast live oak	15	0	0	0	0	15	
59	<i>Quercus agrifolia</i>	coast live oak	13	11	0	0	0	24	
60	<i>Quercus agrifolia</i>	coast live oak	14	12	0	0	0	26	
61	<i>Quercus kelloggii</i>	California black oak	13	13	0	0	0	26	
62	<i>Quercus agrifolia</i>	coast live oak	16	12	0	0	0	28	
63	<i>Quercus agrifolia</i>	coast live oak	7	0	0	0	0	7	
64	<i>Quercus agrifolia</i>	coast live oak	11	0	0	0	0	11	
65	<i>Quercus agrifolia</i>	coast live oak	12	0	0	0	0	12	
66	<i>Quercus agrifolia</i>	coast live oak	11	7	0	0	0	18	

TREE #	SCIENTIFIC NAME	COMMON NAME	DBH 1	DBH 2	DBH 3	DBH 4	DBH 5	DBH SUM	HABITAT NOTES
67	<i>Quercus agrifolia</i>	coast live oak	17	15	0	0	0	32	
68	<i>Quercus agrifolia</i>	coast live oak	17	14	13	0	0	44	
69	<i>Quercus agrifolia</i>	coast live oak	14	13	12	5	0	44	
70	<i>Quercus agrifolia</i>	coast live oak	11	6	0	0	0	17	
71	<i>Quercus agrifolia</i>	coast live oak	14	10	10	0	0	34	
72	<i>Quercus agrifolia</i>	coast live oak	11	6	0	0	0	17	
73	<i>Quercus agrifolia</i>	coast live oak	12	12	11	9	0	44	
74	<i>Quercus agrifolia</i>	coast live oak	6	0	0	0	0	6	
75	<i>Quercus agrifolia</i>	coast live oak	12	11	9	0	0	32	
76	<i>Quercus agrifolia</i>	coast live oak	15	0	0	0	0	15	
77	<i>Quercus kelloggii</i>	California black oak	21	11	9	0	0	41	
78	<i>Quercus kelloggii</i>	California black oak	7	0	0	0	0	7	
79	<i>Arbutus menziesii</i>	Pacific madrone	9	0	0	0	0	9	
80	<i>Quercus kelloggii</i>	California black oak	9	8	8	0	0	25	
81	<i>Quercus kelloggii</i>	California black oak	8	0	0	0	0	8	
82	<i>Quercus kelloggii</i>	California black oak	9	0	0	0	0	9	
83	<i>Quercus kelloggii</i>	California black oak	14	9	0	0	0	23	
84	<i>Quercus kelloggii</i>	California black oak	18	15	0	0	0	33	
85	<i>Arbutus menziesii</i>	Pacific madrone	9	7	6	0	0	22	
86	<i>Quercus kelloggii</i>	California black oak	10	0	0	0	0	10	
87	<i>Quercus kelloggii</i>	California black oak	8	0	0	0	0	8	
88	<i>Quercus kelloggii</i>	California black oak	12	0	0	0	0	12	
89	<i>Quercus kelloggii</i>	California black oak	11	0	0	0	0	11	
90	<i>Quercus kelloggii</i>	California black oak	15	14	0	0	0	29	
91	<i>Arbutus menziesii</i>	Pacific madrone	7	0	0	0	0	7	
92	<i>Quercus kelloggii</i>	California black oak	11	0	0	0	0	11	
93	<i>Quercus kelloggii</i>	California black oak	13	0	0	0	0	13	
94	<i>Quercus kelloggii</i>	California black oak	10	0	0	0	0	10	
95	<i>Quercus kelloggii</i>	California black oak	8	7	6	0	0	21	
96	<i>Quercus agrifolia</i>	coast live oak	10	0	0	0	0	10	
97	<i>Quercus agrifolia</i>	coast live oak	21	20	10	0	0	51	
98	<i>Quercus agrifolia</i>	coast live oak	11	0	0	0	0	11	
99	<i>Quercus agrifolia</i>	coast live oak	10	8	8	0	0	26	
100	<i>Quercus agrifolia</i>	coast live oak	13	0	0	0	0	13	

TREE #	SCIENTIFIC NAME	COMMON NAME	DBH 1	DBH 2	DBH 3	DBH 4	DBH 5	DBH SUM	HABITAT NOTES
101	<i>Quercus agrifolia</i>	coast live oak	15	0	0	0	0	15	
102	<i>Quercus agrifolia</i>	coast live oak	7	0	0	0	0	7	
103	<i>Quercus agrifolia</i>	coast live oak	14	13	13	0	0	40	
104	<i>Quercus agrifolia</i>	coast live oak	23	0	0	0	0	23	
105	<i>Quercus agrifolia</i>	coast live oak	38	0	0	0	0	38	Bat Maternity Roost
106	<i>Quercus agrifolia</i>	coast live oak	14	0	0	0	0	14	
107	<i>Quercus agrifolia</i>	coast live oak	15	0	0	0	0	15	
108	<i>Quercus agrifolia</i>	coast live oak	17	10	0	0	0	27	
109	<i>Quercus agrifolia</i>	coast live oak	11	0	0	0	0	11	
110	<i>Quercus agrifolia</i>	coast live oak	12	0	0	0	0	12	
111	<i>Quercus agrifolia</i>	coast live oak	10	0	0	0	0	10	
112	<i>Quercus agrifolia</i>	coast live oak	13	0	0	0	0	13	
113	<i>Quercus agrifolia</i>	coast live oak	15	0	0	0	0	15	
114	<i>Quercus agrifolia</i>	coast live oak	13	0	0	0	0	13	
115	<i>Quercus agrifolia</i>	coast live oak	11	0	0	0	0	11	
116	<i>Quercus agrifolia</i>	coast live oak	14	0	0	0	0	14	
117	<i>Quercus agrifolia</i>	coast live oak	17	17	0	0	0	34	
118	<i>Quercus agrifolia</i>	coast live oak	14	9	0	0	0	23	
119	<i>Quercus agrifolia</i>	coast live oak	9	0	0	0	0	9	
120	<i>Arbutus menziesii</i>	Pacific madrone	8	0	0	0	0	8	
121	<i>Arbutus menziesii</i>	Pacific madrone	10	6	5	5	0	26	
122	<i>Quercus agrifolia</i>	coast live oak	17	0	0	0	0	17	
123	<i>Arbutus menziesii</i>	Pacific madrone	7	6	0	0	0	13	
124	<i>Quercus agrifolia</i>	coast live oak	14	12	10	0	0	36	
125	<i>Quercus agrifolia</i>	coast live oak	11	0	0	0	0	11	
126	<i>Arbutus menziesii</i>	Pacific madrone	13	0	0	0	0	13	
127	<i>Arbutus menziesii</i>	Pacific madrone	9	0	0	0	0	9	
128	<i>Quercus agrifolia</i>	coast live oak	9	0	0	0	0	9	
129	<i>Quercus agrifolia</i>	coast live oak	6	0	0	0	0	6	
130	<i>Quercus agrifolia</i>	coast live oak	7	0	0	0	0	7	
131	<i>Arbutus menziesii</i>	Pacific madrone	8	7	0	0	0	15	
132	<i>Quercus agrifolia</i>	coast live oak	11	8	0	0	0	19	
133	<i>Quercus agrifolia</i>	coast live oak	9	0	0	0	0	9	
134	<i>Quercus agrifolia</i>	coast live oak	11	0	0	0	0	11	

TREE #	SCIENTIFIC NAME	COMMON NAME	DBH 1	DBH 2	DBH 3	DBH 4	DBH 5	DBH SUM	HABITAT NOTES
135	<i>Quercus agrifolia</i>	coast live oak	9	0	0	0	0	9	
136	<i>Quercus agrifolia</i>	coast live oak	10	0	0	0	0	10	
137	<i>Quercus agrifolia</i>	coast live oak	7	6	5	5	0	23	
138	<i>Quercus agrifolia</i>	coast live oak	9	0	0	0	0	9	
139	<i>Quercus agrifolia</i>	coast live oak	10	7	0	0	0	17	
140	<i>Quercus agrifolia</i>	coast live oak	40	0	0	0	0	40	
141	<i>Quercus agrifolia</i>	coast live oak	9	8	0	0	0	17	
142	<i>Arbutus menziesii</i>	Pacific madrone	6	0	0	0	0	6	
143	<i>Quercus agrifolia</i>	coast live oak	9	0	0	0	0	9	
144	<i>Quercus agrifolia</i>	coast live oak	14	11	6	5	0	36	
145	<i>Arbutus menziesii</i>	Pacific madrone	7	0	0	0	0	7	
146	<i>Quercus agrifolia</i>	coast live oak	15	14	0	0	0	29	
147	<i>Quercus agrifolia</i>	coast live oak	25	12	0	0	0	37	
148	<i>Quercus agrifolia</i>	coast live oak	20	0	0	0	0	20	
149	<i>Arbutus menziesii</i>	Pacific madrone	9	0	0	0	0	9	
150	<i>Quercus agrifolia</i>	coast live oak	14	0	0	0	0	14	
151	<i>Quercus agrifolia</i>	coast live oak	9	8	0	0	0	17	
152	<i>Quercus agrifolia</i>	coast live oak	12	0	0	0	0	12	
153	<i>Quercus agrifolia</i>	coast live oak	7	0	0	0	0	7	
154	<i>Arbutus menziesii</i>	Pacific madrone	17	0	0	0	0	17	
155	<i>Arbutus menziesii</i>	Pacific madrone	9	0	0	0	0	9	
156	<i>Quercus agrifolia</i>	coast live oak	9	0	0	0	0	9	
157	<i>Quercus agrifolia</i>	coast live oak	11	0	0	0	0	11	
158	<i>Arbutus menziesii</i>	Pacific madrone	10	8	6	5	0	29	
159	<i>Quercus agrifolia</i>	coast live oak	14	0	0	0	0	14	
160	<i>Quercus agrifolia</i>	coast live oak	13	0	0	0	0	13	
161	<i>Arbutus menziesii</i>	Pacific madrone	9	0	0	0	0	9	
162	<i>Arbutus menziesii</i>	Pacific madrone	8	0	0	0	0	8	
163	<i>Quercus kelloggii</i>	California black oak	8	0	0	0	0	8	
164	<i>Quercus agrifolia</i>	coast live oak	9	7	6	0	0	22	
165	<i>Quercus agrifolia</i>	coast live oak	12	0	0	0	0	12	
166	<i>Quercus agrifolia</i>	coast live oak	18	0	0	0	0	18	
167	<i>Quercus agrifolia</i>	coast live oak	12	0	0	0	0	12	
168	<i>Quercus agrifolia</i>	coast live oak	9	0	0	0	0	9	

TREE #	SCIENTIFIC NAME	COMMON NAME	DBH 1	DBH 2	DBH 3	DBH 4	DBH 5	DBH SUM	HABITAT NOTES
169	<i>Quercus agrifolia</i>	coast live oak	11	0	0	0	0	11	
170	<i>Quercus agrifolia</i>	coast live oak	11	0	0	0	0	11	
171	<i>Quercus agrifolia</i>	coast live oak	13	0	0	0	0	13	
172	<i>Quercus agrifolia</i>	coast live oak	14	0	0	0	0	14	
173	<i>Quercus agrifolia</i>	coast live oak	11	11	0	0	0	22	
174	<i>Quercus agrifolia</i>	coast live oak	34	19	0	0	0	53	
175	<i>Pseudotsuga menziesii</i>	Douglas fir	13	0	0	0	0	13	
176	<i>Quercus agrifolia</i>	coast live oak	27	0	0	0	0	27	
177	<i>Quercus agrifolia</i>	coast live oak	7	0	0	0	0	7	
178	<i>Arbutus menziesii</i>	Pacific madrone	11	9	0	0	0	20	
179	<i>Arbutus menziesii</i>	Pacific madrone	15	11	0	0	0	26	
180	<i>Arbutus menziesii</i>	Pacific madrone	6	0	0	0	0	6	
181	<i>Quercus agrifolia</i>	coast live oak	8	0	0	0	0	8	
182	<i>Arbutus menziesii</i>	Pacific madrone	9	0	0	0	0	9	
183	<i>Arbutus menziesii</i>	Pacific madrone	13	10	0	0	0	23	
184	<i>Pseudotsuga menziesii</i>	Douglas fir	7	0	0	0	0	7	
185	<i>Arbutus menziesii</i>	Pacific madrone	9	0	0	0	0	9	
186	<i>Arbutus menziesii</i>	Pacific madrone	9	7	0	0	0	16	
187	<i>Arbutus menziesii</i>	Pacific madrone	12	10	0	0	0	22	
188	<i>Arbutus menziesii</i>	Pacific madrone	15	12	6	0	0	33	
189	<i>Arbutus menziesii</i>	Pacific madrone	21	0	0	0	0	21	
190	<i>Quercus agrifolia</i>	coast live oak	13	10	8	7	0	38	
191	<i>Arbutus menziesii</i>	Pacific madrone	7	0	0	0	0	7	
192	<i>Quercus agrifolia</i>	coast live oak	16	15	0	0	0	31	
193	<i>Arbutus menziesii</i>	Pacific madrone	9	0	0	0	0	9	
194	<i>Quercus agrifolia</i>	coast live oak	9	0	0	0	0	9	
195	<i>Quercus agrifolia</i>	coast live oak	10	0	0	0	0	10	
196	<i>Quercus agrifolia</i>	coast live oak	11	8	0	0	0	19	
197	<i>Arbutus menziesii</i>	Pacific madrone	11	0	0	0	0	11	
198	<i>Quercus kelloggii</i>	California black oak	21	0	0	0	0	21	
199	<i>Arbutus menziesii</i>	Pacific madrone	8	0	0	0	0	8	
200	<i>Quercus agrifolia</i>	coast live oak	9	0	0	0	0	9	
201	<i>Arbutus menziesii</i>	Pacific madrone	14	0	0	0	0	14	
202	<i>Umbellularia californica</i>	California bay	7	0	0	0	0	7	

TREE #	SCIENTIFIC NAME	COMMON NAME	DBH 1	DBH 2	DBH 3	DBH 4	DBH 5	DBH SUM	HABITAT NOTES
203	<i>Arbutus menziesii</i>	Pacific madrone	11	6	0	0	0	17	
204	<i>Arbutus menziesii</i>	Pacific madrone	8	0	0	0	0	8	
205	<i>Arbutus menziesii</i>	Pacific madrone	7	0	0	0	0	7	
206	<i>Arbutus menziesii</i>	Pacific madrone	9	6	0	0	0	15	
207	<i>Arbutus menziesii</i>	Pacific madrone	6	0	0	0	0	6	
208	<i>Quercus agrifolia</i>	coast live oak	17	9	8	6	0	40	
209	<i>Arbutus menziesii</i>	Pacific madrone	10	10	8	7	0	35	
210	<i>Quercus agrifolia</i>	coast live oak	12	0	0	0	0	12	
211	<i>Quercus kelloggii</i>	California black oak	15	0	0	0	0	15	
212	<i>Arbutus menziesii</i>	Pacific madrone	10	8	0	0	0	18	
213	<i>Quercus agrifolia</i>	coast live oak	9	0	0	0	0	9	
214	<i>Arbutus menziesii</i>	Pacific madrone	9	0	0	0	0	9	
215	<i>Quercus agrifolia</i>	coast live oak	8	7	0	0	0	15	
216	<i>Arbutus menziesii</i>	Pacific madrone	8	0	0	0	0	8	
217	<i>Umbellularia californica</i>	California bay	6	0	0	0	0	6	
218	<i>Quercus agrifolia</i>	coast live oak	6	0	0	0	0	6	
219	<i>Arbutus menziesii</i>	Pacific madrone	6	0	0	0	0	6	
220	<i>Quercus agrifolia</i>	coast live oak	7	0	0	0	0	7	
221	<i>Arbutus menziesii</i>	Pacific madrone	8	0	0	0	0	8	
222	<i>Arbutus menziesii</i>	Pacific madrone	11	8	0	0	0	19	
223	<i>Arbutus menziesii</i>	Pacific madrone	11	0	0	0	0	11	
224	<i>Quercus agrifolia</i>	coast live oak	9	0	0	0	0	9	
225	<i>Quercus kelloggii</i>	California black oak	10	0	0	0	0	10	
226	<i>Arbutus menziesii</i>	Pacific madrone	10	8	0	0	0	18	
227	<i>Quercus agrifolia</i>	coast live oak	8	0	0	0	0	8	
228	<i>Arbutus menziesii</i>	Pacific madrone	9	0	0	0	0	9	
229	<i>Arbutus menziesii</i>	Pacific madrone	8	0	0	0	0	8	
230	<i>Arbutus menziesii</i>	Pacific madrone	17	14	12	10	6	59	
231	<i>Quercus agrifolia</i>	coast live oak	11	0	0	0	0	11	
232	<i>Arbutus menziesii</i>	Pacific madrone	10	0	0	0	0	10	
233	<i>Arbutus menziesii</i>	Pacific madrone	10	0	0	0	0	10	
234	<i>Quercus kelloggii</i>	California black oak	14	0	0	0	0	14	
235	<i>Pseudotsuga menziesii</i>	Douglas fir	18	0	0	0	0	18	
236	<i>Arbutus menziesii</i>	Pacific madrone	7	0	0	0	0	7	

TREE #	SCIENTIFIC NAME	COMMON NAME	DBH 1	DBH 2	DBH 3	DBH 4	DBH 5	DBH SUM	HABITAT NOTES
237	<i>Arbutus menziesii</i>	Pacific madrone	7	0	0	0	0	7	
238	<i>Pseudotsuga menziesii</i>	Douglas fir	8	0	0	0	0	8	
239	<i>Quercus agrifolia</i>	coast live oak	8	0	0	0	0	8	
240	<i>Quercus kelloggii</i>	California black oak	14	14	6	0	0	34	
241	<i>Arbutus menziesii</i>	Pacific madrone	6	0	0	0	0	6	
242	<i>Arbutus menziesii</i>	Pacific madrone	7	7	0	0	0	14	
243	<i>Quercus kelloggii</i>	California black oak	10	9	0	0	0	19	
244	<i>Quercus kelloggii</i>	California black oak	14	0	0	0	0	14	
245	<i>Arbutus menziesii</i>	Pacific madrone	11	0	0	0	0	11	
246	<i>Quercus agrifolia</i>	coast live oak	12	10	0	0	0	22	
247	<i>Quercus agrifolia</i>	coast live oak	10	0	0	0	0	10	
248	<i>Umbellularia californica</i>	California bay	8	0	0	0	0	8	
249	<i>Arbutus menziesii</i>	Pacific madrone	24	20	17	0	0	61	
250	<i>Quercus agrifolia</i>	coast live oak	11	0	0	0	0	11	
251	<i>Quercus kelloggii</i>	California black oak	21	12	0	0	0	33	
252	<i>Arbutus menziesii</i>	Pacific madrone	9	0	0	0	0	9	
253	<i>Arbutus menziesii</i>	Pacific madrone	6	0	0	0	0	6	
254	<i>Quercus agrifolia</i>	coast live oak	15	7	0	0	0	22	
255	<i>Arbutus menziesii</i>	Pacific madrone	7	6	0	0	0	13	
256	<i>Arbutus menziesii</i>	Pacific madrone	8	0	0	0	0	8	
257	<i>Arbutus menziesii</i>	Pacific madrone	7	0	0	0	0	7	
258	<i>Quercus kelloggii</i>	California black oak	16	13	0	0	0	29	
259	<i>Quercus agrifolia</i>	coast live oak	17	0	0	0	0	17	
260	<i>Quercus agrifolia</i>	coast live oak	17	0	0	0	0	17	
261	<i>Arbutus menziesii</i>	Pacific madrone	9	0	0	0	0	9	
262	<i>Arbutus menziesii</i>	Pacific madrone	10	10	8	7	0	35	
263	<i>Arbutus menziesii</i>	Pacific madrone	10	9	8	0	0	27	
264	<i>Arbutus menziesii</i>	Pacific madrone	8	6	0	0	0	14	
265	<i>Arbutus menziesii</i>	Pacific madrone	10	8	5	0	0	23	
266	<i>Arbutus menziesii</i>	Pacific madrone	7	0	0	0	0	7	
267	<i>Arbutus menziesii</i>	Pacific madrone	7	6	0	0	0	13	
268	<i>Arbutus menziesii</i>	Pacific madrone	6	5	0	0	0	11	
269	<i>Arbutus menziesii</i>	Pacific madrone	8	7	0	0	0	15	
270	<i>Arbutus menziesii</i>	Pacific madrone	11	9	0	0	0	20	

TREE #	SCIENTIFIC NAME	COMMON NAME	DBH 1	DBH 2	DBH 3	DBH 4	DBH 5	DBH SUM	HABITAT NOTES
271	<i>Arbutus menziesii</i>	Pacific madrone	8	6	6	5	0	25	
272	<i>Arbutus menziesii</i>	Pacific madrone	7	4	0	0	0	11	
273	<i>Arbutus menziesii</i>	Pacific madrone	10	0	0	0	0	10	
274	<i>Arbutus menziesii</i>	Pacific madrone	9	0	0	0	0	9	
275	<i>Arbutus menziesii</i>	Pacific madrone	9	0	0	0	0	9	
276	<i>Quercus agrifolia</i>	coast live oak	22	18	16	0	0	56	
277	<i>Quercus agrifolia</i>	coast live oak	16	12	10	0	0	38	
278	<i>Quercus kelloggii</i>	California black oak	24	0	0	0	0	24	
279	<i>Quercus agrifolia</i>	coast live oak	8	0	0	0	0	8	
280	<i>Quercus agrifolia</i>	coast live oak	23	0	0	0	0	23	
281	<i>Arbutus menziesii</i>	Pacific madrone	12	8	0	0	0	20	
282	<i>Arbutus menziesii</i>	Pacific madrone	8	7	0	0	0	15	
283	<i>Arbutus menziesii</i>	Pacific madrone	7	0	0	0	0	7	
284	<i>Quercus douglasii</i>	blue oak	11	8	6	0	0	25	
285	<i>Quercus agrifolia</i>	coast live oak	25	24	21	0	0	70	
286	<i>Quercus agrifolia</i>	coast live oak	15	0	0	0	0	15	
287	<i>Quercus agrifolia</i>	coast live oak	15	14	12	10	10	61	
288	<i>Umbellularia californica</i>	California bay	12	7	0	0	0	19	
289	<i>Quercus agrifolia</i>	coast live oak	18	0	0	0	0	18	
290	<i>Umbellularia californica</i>	California bay	19	0	0	0	0	19	
291	<i>Quercus agrifolia</i>	coast live oak	19	15	0	0	0	34	
292	<i>Umbellularia californica</i>	California bay	11	0	0	0	0	11	
293	<i>Quercus agrifolia</i>	coast live oak	32	0	0	0	0	32	
294	<i>Quercus agrifolia</i>	coast live oak	28	0	0	0	0	28	Bat Maternity Roost
295	<i>Quercus lobata</i>	valley oak	15	0	0	0	0	15	
296	<i>Umbellularia californica</i>	California bay	11	0	0	0	0	11	
297	<i>Umbellularia californica</i>	California bay	10	0	0	0	0	10	
298	<i>Quercus agrifolia</i>	coast live oak	14	0	0	0	0	14	
299	<i>Quercus agrifolia</i>	coast live oak	19	18	0	0	0	37	
300	<i>Quercus agrifolia</i>	coast live oak	24	19	0	0	0	43	Bat Maternity Roost
301	<i>Quercus agrifolia</i>	coast live oak	14	10	0	0	0	24	
302	<i>Arbutus menziesii</i>	Pacific madrone	13	7	0	0	0	20	
303	<i>Quercus agrifolia</i>	coast live oak	20	15	0	0	0	35	
304	<i>Umbellularia californica</i>	California bay	16	9	0	0	0	25	

TREE #	SCIENTIFIC NAME	COMMON NAME	DBH 1	DBH 2	DBH 3	DBH 4	DBH 5	DBH SUM	HABITAT NOTES
305	<i>Quercus agrifolia</i>	coast live oak	40	0	0	0	0	40	Bat Maternity Roost
306	<i>Quercus agrifolia</i>	coast live oak	22	0	0	0	0	22	
307	<i>Quercus agrifolia</i>	coast live oak	11	11	8	7	0	37	
308	<i>Quercus agrifolia</i>	coast live oak	16	14	13	12	9	64	
309	<i>Umbellularia californica</i>	California bay	7	0	0	0	0	7	
310	<i>Quercus agrifolia</i>	coast live oak	21	19	18	17	11	86	
311	<i>Umbellularia californica</i>	California bay	11	0	0	0	0	11	
312	<i>Quercus agrifolia</i>	coast live oak	23	18	0	0	0	41	
313	<i>Quercus agrifolia</i>	coast live oak	31	0	0	0	0	31	
314	<i>Quercus agrifolia</i>	coast live oak	26	0	0	0	0	26	
315	<i>Quercus agrifolia</i>	coast live oak	23	0	0	0	0	23	
316	<i>Quercus agrifolia</i>	coast live oak	28	0	0	0	0	28	Bat Maternity Roost
317	<i>Quercus agrifolia</i>	coast live oak	14	0	0	0	0	14	
318	<i>Umbellularia californica</i>	California bay	19	16	0	0	0	35	
319	<i>Quercus agrifolia</i>	coast live oak	19	18	0	0	0	37	
320	<i>Quercus agrifolia</i>	coast live oak	31	0	0	0	0	31	
321	<i>Quercus agrifolia</i>	coast live oak	15	0	0	0	0	15	
322	<i>Umbellularia californica</i>	California bay	8	0	0	0	0	8	
323	<i>Quercus agrifolia</i>	coast live oak	20	0	0	0	0	20	
324	<i>Quercus agrifolia</i>	coast live oak	22	21	0	0	0	43	Bat Maternity Roost
325	<i>Quercus agrifolia</i>	coast live oak	23	0	0	0	0	23	Bat Maternity Roost
326	<i>Quercus agrifolia</i>	coast live oak	18	0	0	0	0	18	
327	<i>Quercus agrifolia</i>	coast live oak	26	0	0	0	0	26	
328	<i>Quercus agrifolia</i>	coast live oak	20	18	0	0	0	38	
329	<i>Quercus agrifolia</i>	coast live oak	21	0	0	0	0	21	Bat Maternity Roost
330	<i>Quercus agrifolia</i>	coast live oak	30	17	0	0	0	47	Bat Maternity Roost
331	<i>Quercus agrifolia</i>	coast live oak	17	15	13	0	0	45	
332	<i>Quercus agrifolia</i>	coast live oak	22	21	20	15	14	92	Bat Maternity Roost
333	<i>Quercus agrifolia</i>	coast live oak	19	10	0	0	0	29	
334	<i>Quercus agrifolia</i>	coast live oak	27	0	0	0	0	27	
335	<i>Quercus agrifolia</i>	coast live oak	40	0	0	0	0	40	Bat Maternity Roost
336	<i>Quercus agrifolia</i>	coast live oak	23	0	0	0	0	23	
337	<i>Umbellularia californica</i>	California bay	10	0	0	0	0	10	
338	<i>Umbellularia californica</i>	California bay	20	19	17	15	11	82	

TREE #	SCIENTIFIC NAME	COMMON NAME	DBH 1	DBH 2	DBH 3	DBH 4	DBH 5	DBH SUM	HABITAT NOTES
339	<i>Quercus agrifolia</i>	coast live oak	25	0	0	0	0	25	
340	<i>Quercus agrifolia</i>	coast live oak	32	0	0	0	0	32	
341	<i>Quercus agrifolia</i>	coast live oak	10	0	0	0	0	10	
342	<i>Umbellularia californica</i>	California bay	16	0	0	0	0	16	
343	<i>Quercus agrifolia</i>	coast live oak	27	0	0	0	0	27	
344	<i>Quercus agrifolia</i>	coast live oak	23	20	17	0	0	60	
345	<i>Quercus agrifolia</i>	coast live oak	7	0	0	0	0	7	
346	<i>Umbellularia californica</i>	California bay	12	0	0	0	0	12	
347	<i>Umbellularia californica</i>	California bay	10	0	0	0	0	10	
348	<i>Umbellularia californica</i>	California bay	10	7	0	0	0	17	
349	<i>Umbellularia californica</i>	California bay	14	0	0	0	0	14	
350	<i>Quercus agrifolia</i>	coast live oak	11	0	0	0	0	11	
351	<i>Quercus agrifolia</i>	coast live oak	20	0	0	0	0	20	
352	<i>Umbellularia californica</i>	California bay	16	14	0	0	0	30	
353	<i>Umbellularia californica</i>	California bay	10	0	0	0	0	10	
354	<i>Umbellularia californica</i>	California bay	10	0	0	0	0	10	
355	<i>Quercus agrifolia</i>	coast live oak	8	0	0	0	0	8	
356	<i>Quercus agrifolia</i>	coast live oak	32	0	0	0	0	32	
357	<i>Quercus agrifolia</i>	coast live oak	30	24	0	0	0	54	
358	<i>Arbutus menziesii</i>	Pacific madrone	16	0	0	0	0	16	
359	<i>Quercus agrifolia</i>	coast live oak	11	0	0	0	0	11	
360	<i>Arbutus menziesii</i>	Pacific madrone	22	0	0	0	0	22	
361	<i>Quercus agrifolia</i>	coast live oak	28	0	0	0	0	28	
362	<i>Quercus agrifolia</i>	coast live oak	40	22	0	0	0	62	
363	<i>Quercus agrifolia</i>	coast live oak	22	0	0	0	0	22	
364	<i>Quercus agrifolia</i>	coast live oak	36	32	0	0	0	68	

ATTACHMENT C – OBSERVED WILDLIFE SPECIES: MAY 2025

Table C-1. Wildlife species observed in and around the Study Area: May 28 and 29, 2025

SCIENTIFIC NAME	COMMON NAME
Mammals	
<i>Canis latrans</i>	coyote
<i>Lepus californicus</i>	black-tailed jackrabbit
<i>Odocoileus hemionus columbianus</i>	black-tailed deer
<i>Otospermophilus beecheyi</i>	ground squirrel
<i>Sciurus griseus</i>	western gray squirrel
Birds	
<i>Agelaius phoeniceus</i>	red-winged blackbird
<i>Aphelocoma californica</i>	California scrub jay
<i>Baeolophus inornatus</i>	oak titmouse
<i>Buteo jamaicensis</i>	red-tailed hawk
<i>Buteo lineatus</i>	red-shouldered hawk
<i>Callipepla californica</i>	California quail
<i>Cathartes aura</i>	turkey vulture
<i>Chamaea fasciata</i>	wrenit
<i>Colaptes auratus</i>	northern flicker
<i>Corvus corax</i>	common raven
<i>Cyanocitta stelleri</i>	Steller's jay
<i>Haemorhous mexicanus</i>	house finch
<i>Junco hyemalis</i>	dark-eyed junco
<i>Melanerpes formicivorus</i>	acorn woodpecker
<i>Meleagris gallopavo</i>	wild turkey
<i>Melospiza crissalis</i>	California towhee
<i>Patagioenas fasciata</i>	band-tailed pigeon
<i>Pipilo maculatus</i>	spotted towhee
<i>Polioptila caerulea</i>	blue-green gnatcatcher
<i>Sialia mexicana</i>	western bluebird
<i>Sitta carolinensis</i>	white-breasted nuthatch
<i>Spinus psaltria</i>	lesser goldfinch
<i>Tachycineta thalassina</i>	violet-green swallow
<i>Thryomanes bewickii</i>	Bewick's wren
<i>Vermivora celata</i>	orange-crowned warbler
<i>Zenaida macroura</i>	mourning dove

SCIENTIFIC NAME	COMMON NAME
Reptiles and Amphibians	
<i>Lithobates catesbeianus</i>	American bullfrog
<i>Sceloporus occidentalis</i>	western fence lizard

ATTACHMENT D – REPRESENTATIVE PHOTOGRAPHS



Understory of knobcone pine forest; note even-aged cohorts and lack of understory.



Understory of coast live oak woodland with no vertical heterogeneity and understory of non-native herbaceous species.



Large coast live oak (*Quercus agrifolia*) with substrates that may provide maternity roosting for bats.



Singel valley oak (*Quercus lobata*) proposed for removal; note relatively small and does not contain substantive wildlife habitat values greater than that of remainder trees.