

Appendix I

Noise Measurement Data Sheet

15-Minute Noise Measurement Datasheet

Project: Menifee Boardwalk, City of Menifee
Site Address/Location: 28880 Newport Road, Menifee, CA 92584

Site Observations:

Main noise sources are ground traffic & residential ambiance from human activity. Traffic noise from vehicles on Newport Road, Menifee Road & other surrounding roads. Site area mostly open grassy land. Fastfood restaurant & pharmacy immediately E of site area. Elementary school to the S. Surrounding area mostly residential with various businesses lining Menifee Rd & Newport Rd at the intersection. The bldgs reflect & refract much of the sound. Other noise sources include bird song, pedestrians & occasional overhead air traffic, both helicopters & fixed wing. Leaf rustle due to 8mph to breeze.

Date: 10/7/2025

Field Tech/Engineer: Ian Edward Gallagher

General Location: 28880 Newport Road, Menifee, CA 92584

Sound Meter: Larson Davis Sound Track LxT1 **SN:** 3099

Settings: A-weighted, slow, 10-sec, 15-minute interval

Meteorological Con.: 85 deg F, 8 mph wind, 33% humidity, clear skies sunshine.

Site ID: NM-1 thru 4

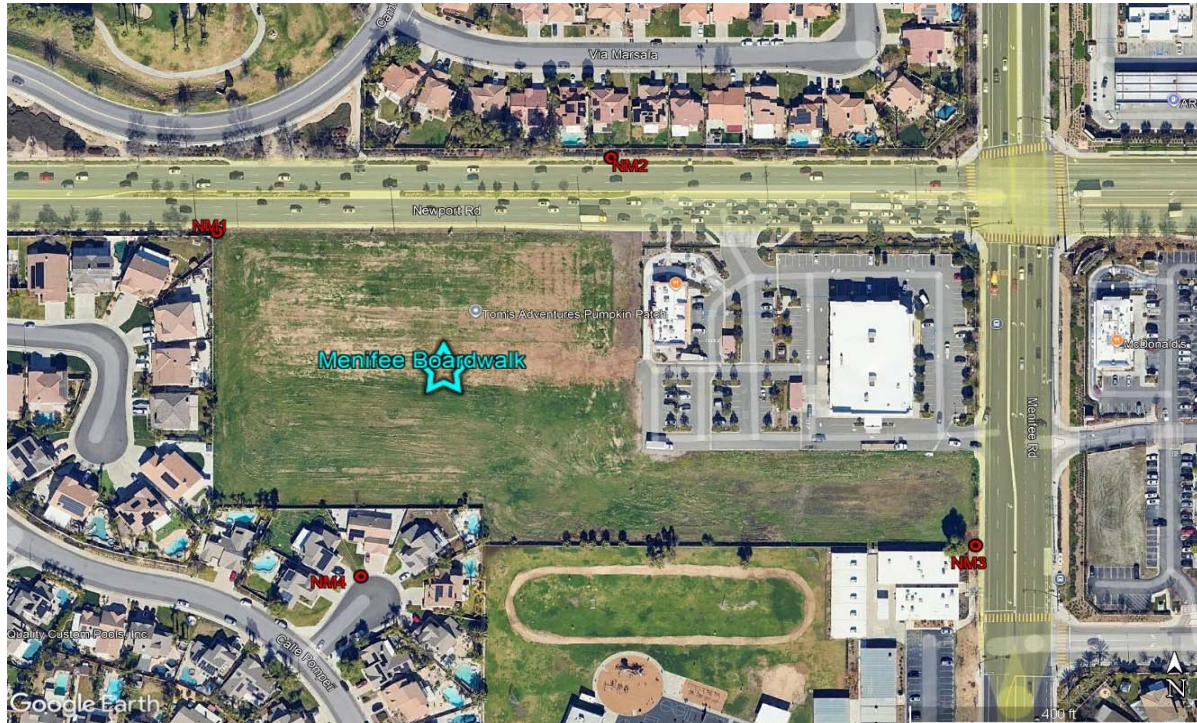
Site Topo: Suburban, SF medium density residences in all directions.

Ground Type: Suburban like conditions, acoustically refractive, absorptive but mostly reflective off of buildings and hard surfaces.

NM locations, latitude , longitude :

NM1 Meter: 33°41'5.65"N 117° 9'26.34"W NM3 Meter 33°41'1.10"N 117° 9'14.33"W
NM2 Meter: 33°41'6.73"N 117° 9'20.10"W NM4 Meter: 33°41'0.65"N 117° 9'24.06"W

Figure 1: Monitoring Locations



15-Minute Noise Measurement Datasheet - Cont.

Project: Menifee Boardwalk, City of Menifee
 Site Address/Location: 28880 Newport Road, Menifee, CA 92584
 Site ID: NM-1 thru 4

Figure 2: NM1 Photo



NM1 looking towards backyard of residence 28760 Ave Marbella, Menifee (behind 6' tall concrete block & stucco wall) Newport Road heading W on the right.

Figure 3: NM2 Photo



NM2 looking S from sidewalk, across Newport Rd towards fast foof restaurant building 28881 Newport Road, Menifee (left).

15-Minute Noise Measurement Datasheet - Cont.

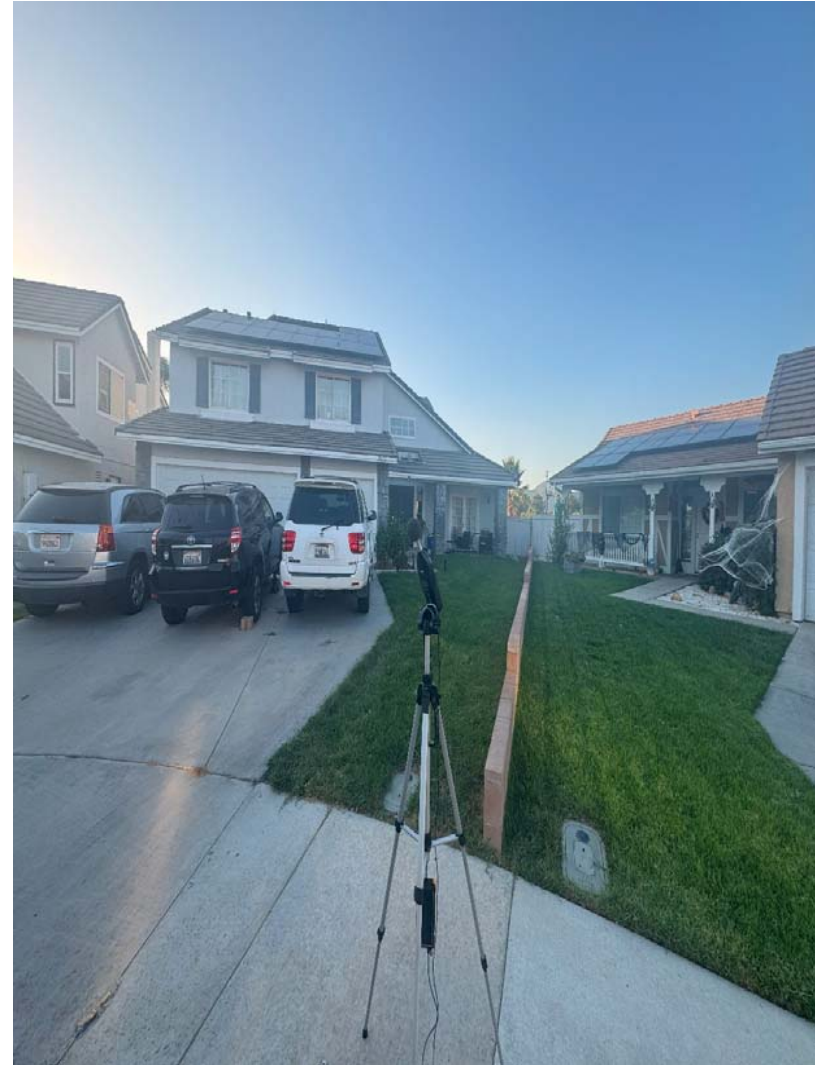
Project: Menifee Boardwalk, City of Menifee
Site Address/Location: 28880 Newport Road, Menifee, CA 92584
Site ID: NM-1 thru 4

Figure 4: NM3 Photo



NM3 looking S from sidewalk down Menifee Rd, building 30205 Menifee Rd, Menifee on the right (behind tree).

Figure 5: NM4 Photo



NM4 looking NNW from sidewalk of Somme Ct, 28858 Somme Ct (left) & 28870 Somme Ct, Menifee (right).

15-Minute Noise Measurement Datasheet - Cont.

Project: Menifee Boardwalk, City of Menifee
Site Address/Location: 28880 Newport Road, Menifee, CA 92584
Site ID: NM-1 thru 4

Table 1: Noise Measurement Summary

Location	Start	Stop	Leq/ dB	Lmax/ dB	Lmin/ dB	L2/ dB	L8/ dB	L25/ dB	L50/ dB	L90/ dB
NM1	3:49 PM	4:04 PM	72.0	81.4	46.1	78.3	76.5	73.9	68.5	58.9
NM2	4:25 PM	4:40 PM	75.2	90.8	53.3	81.6	79.1	76.5	72.2	61.4
NM3	5:01 PM	5:16 PM	64.1	76.0	49.7	72.4	68.9	63.8	60.5	55.3
NM4	5:42 PM	5:57 PM	54.9	70.2	42.3	63.4	59.8	54.2	49.6	44.8

Measurement Report

Report Summary

Meter's File Name LxT_Data.641.s Computer's File Name LxT_0003099-20251007 154955-LxT_Data.641.ldbin
Meter LxT1 0003099
Firmware 2.404
User Ian Edward Gallagher Location NM1 33°41'5.65"N 117° 9'26.34"W
Job Description 15 minute noise measurement
Note KWAQN Menifee Boardwalk Project
Start Time 2025-10-07 15:49:55 Duration 0:15:00.0
End Time 2025-10-07 16:04:55 Run Time 0:15:00.0 Pause Time 0:00:00.0

Results

Overall Metrics

LA _{eq}	72.0 dB		
LAE	101.5 dB	SEA	--- dB
EA	1.6 mPa ² h	LAFTM5	75.1 dB
EA8	50.3 mPa ² h		
EA40	251.4 mPa ² h		
LA _{peak}	96.1 dB	2025-10-07 15:55:31	
LAS _{max}	81.4 dB	2025-10-07 15:55:32	
LAS _{min}	46.1 dB	2025-10-07 15:54:33	
LA _{eq}	72.0 dB		
LC _{eq}	78.8 dB	LC _{eq} - LA _{eq}	6.9 dB
LAI _{eq}	73.1 dB	LAI _{eq} - LA _{eq}	1.1 dB

Exceedances

	Count	Duration
LAS > 65.0 dB	20	0:11:14.7
LAS > 85.0 dB	0	0:00:00.0
LA _{peak} > 135.0 dB	0	0:00:00.0
LA _{peak} > 137.0 dB	0	0:00:00.0
LA _{peak} > 140.0 dB	0	0:00:00.0

Community Noise	LDN	LDay	LNight
	--- dB	--- dB	0.0 dB

	LDEN	LDay	LEve	LNight
	--- dB	--- dB	--- dB	--- dB

Any Data

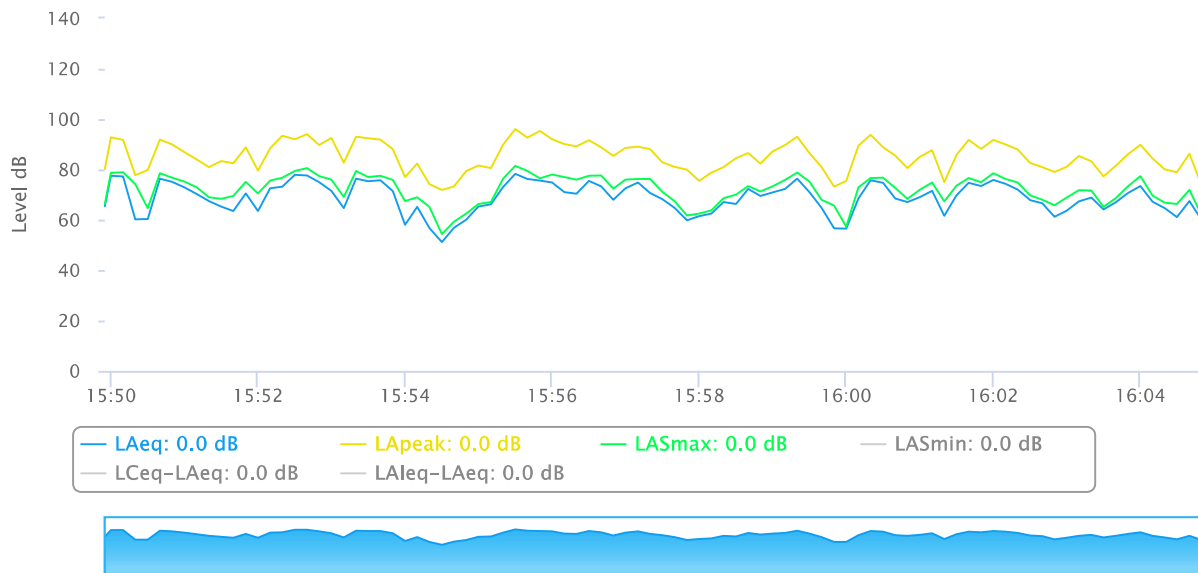
	Level	A Time Stamp	Level	C Time Stamp	Level	Z Time Stamp
L _{eq}	72.0 dB		78.8 dB		--- dB	
LS _(max)	81.4 dB	2025-10-07 15:55:32	--- dB		--- dB	
LS _(min)	46.1 dB	2025-10-07 15:54:33	--- dB		--- dB	
L _{Peak(max)}	96.1 dB	2025-10-07 15:55:31	--- dB		--- dB	

Overloads	Count	Duration	OBA Count	OBA Duration
	0	0:00:00.0	0	0:00:00.0

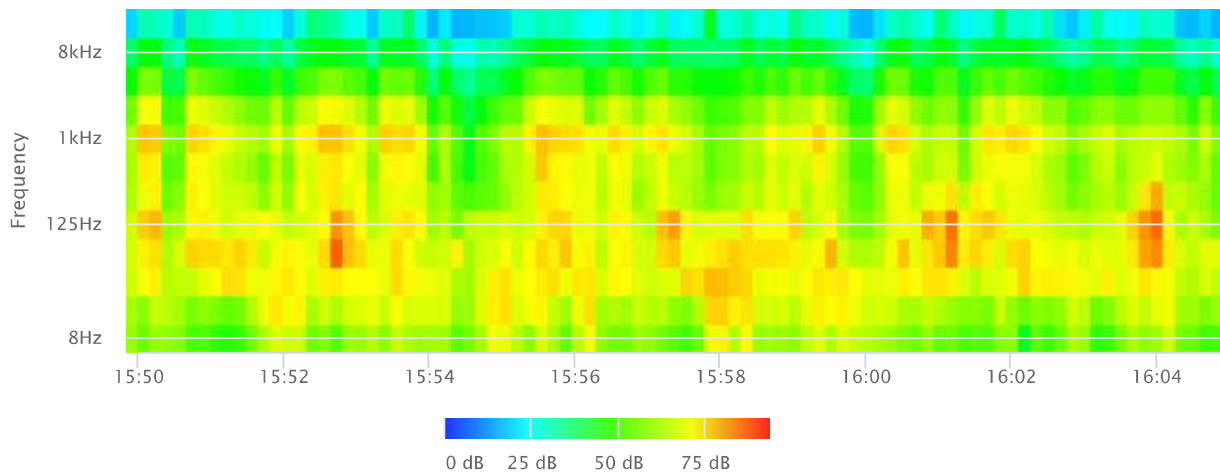
Statistics

LAS 2.0	78.3 dB
LAS 8.0	76.5 dB
LAS 25.0	73.9 dB
LAS 50.0	68.5 dB
LAS 66.6	65.5 dB
LAS 90.0	58.9 dB

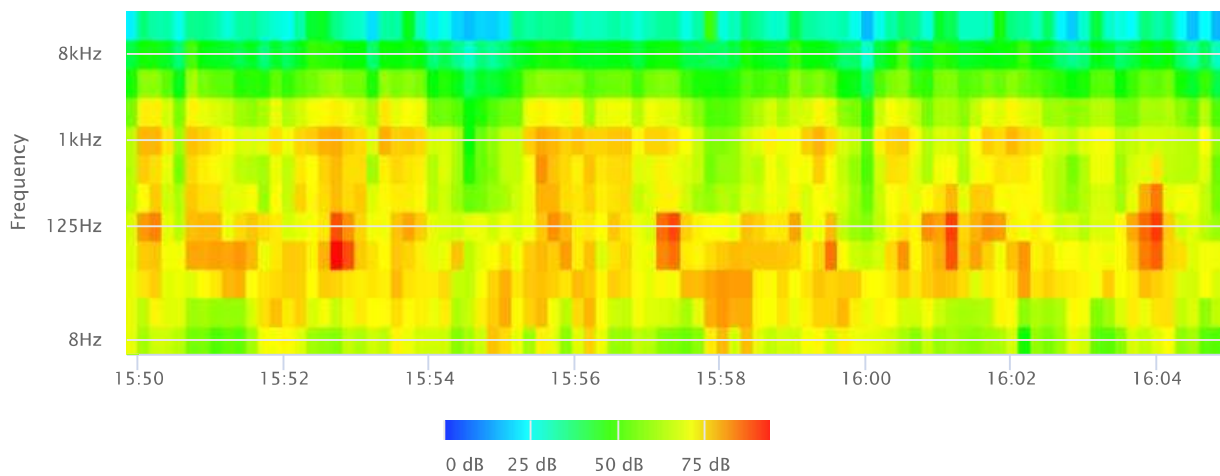
Time History



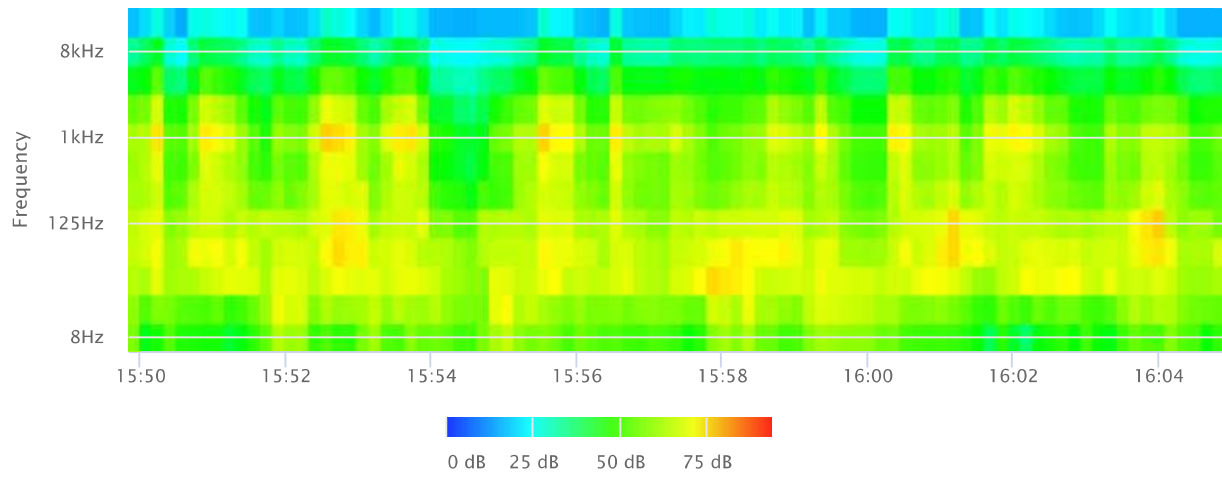
OBA 1/1 Leq



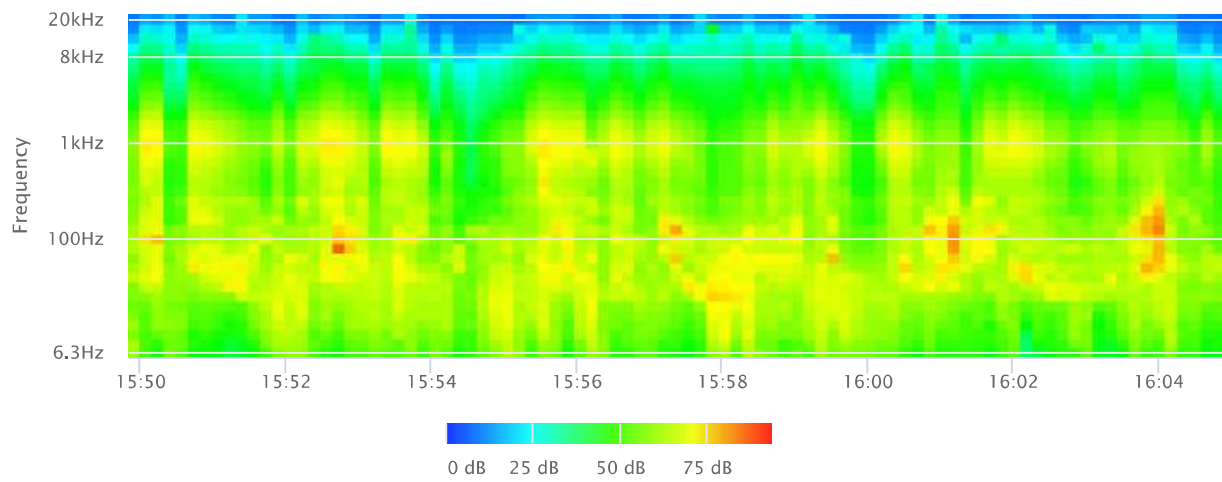
OBA 1/1 Lmax



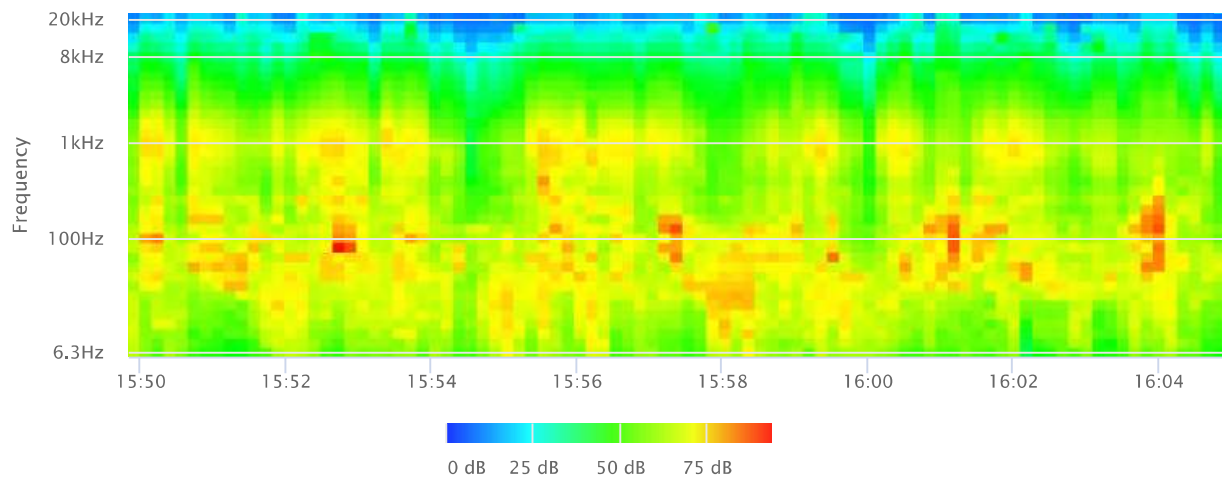
OBA 1/1 Lmin



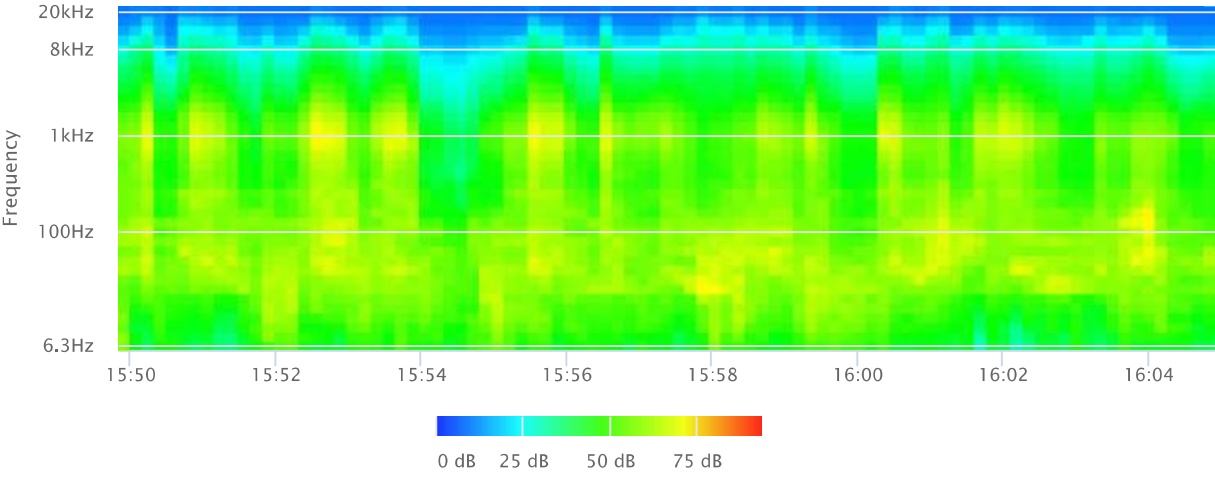
OBA 1/3 Leq



OBA 1/3 Lmax



OBA 1/3 Lmin



Measurement Report

Report Summary

Meter's File Name LxT_Data.642.s Computer's File Name LxT_0003099-20251007 162547-LxT_Data.642.ldbin
 Meter LxT1 0003099
 Firmware 2.404
 User Ian Edward Gallagher Location NM2 33°41'6.73"N 117° 9'20.10"W
 Job Description 15 minute noise measurement
 Note KWAQN Menifee Boardwalk Project
 Start Time 2025-10-07 16:25:47 Duration 0:15:00.0
 End Time 2025-10-07 16:40:47 Run Time 0:15:00.0 Pause Time 0:00:00.0

Results

Overall Metrics

LA _{eq}	75.2 dB		
LAE	104.8 dB	SEA	--- dB
EA	3.3 mPa ² h	LAFTM5	80.0 dB
EA8	106.1 mPa ² h		
EA40	530.7 mPa ² h		
LA _{peak}	108.7 dB	2025-10-07 16:38:57	
LAS _{max}	90.8 dB	2025-10-07 16:38:57	
LAS _{min}	53.3 dB	2025-10-07 16:33:47	
LA _{eq}	75.2 dB		
LC _{eq}	81.3 dB	LC _{eq} - LA _{eq}	6.1 dB
LAI _{eq}	76.8 dB	LAI _{eq} - LA _{eq}	1.6 dB

Exceedances

	Count	Duration
LAS > 65.0 dB	14	0:12:46.10
LAS > 85.0 dB	4	0:00:10.0
LA _{peak} > 135.0 dB	0	0:00:00.0
LA _{peak} > 137.0 dB	0	0:00:00.0
LA _{peak} > 140.0 dB	0	0:00:00.0

Community Noise

LDN	LDay	LNight	
--- dB	--- dB	0.0 dB	
LDEN	LDay	LEve	LNight
--- dB	--- dB	--- dB	--- dB

Any Data

	Level	A Time Stamp	Level	C Time Stamp	Level	Z Time Stamp
L _{eq}	75.2 dB		81.3 dB		--- dB	
LS _(max)	90.8 dB	2025-10-07 16:38:57	--- dB		--- dB	
LS _(min)	53.3 dB	2025-10-07 16:33:47	--- dB		--- dB	
L _{Peak(max)}	108.7 dB	2025-10-07 16:38:57	--- dB		--- dB	

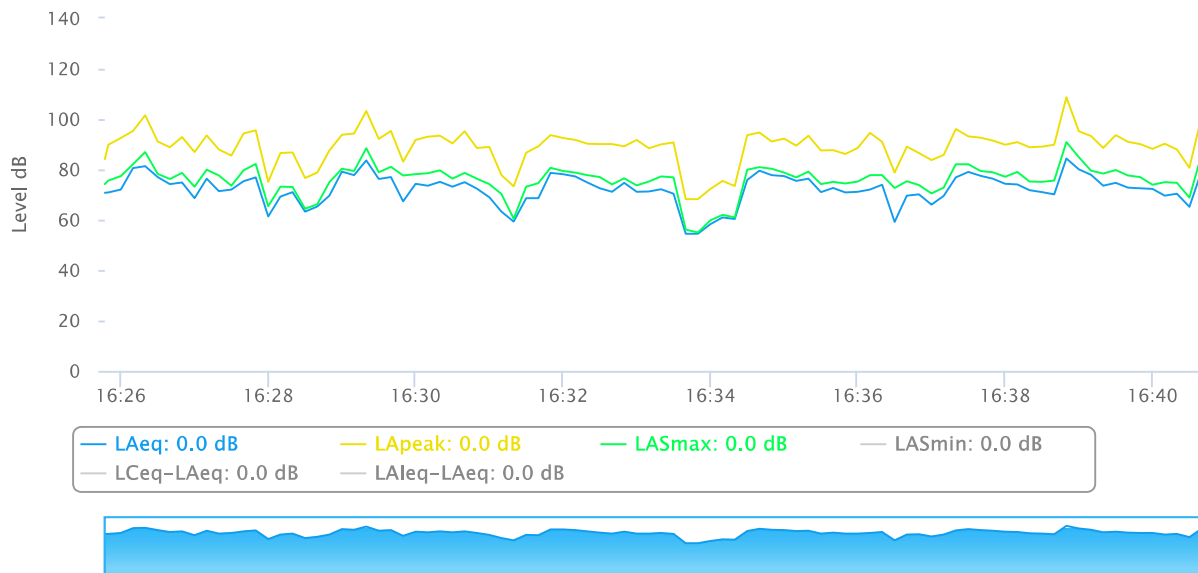
Overloads

Count	Duration	OBA Count	OBA Duration
0	0:00:00.0	0	0:00:00.0

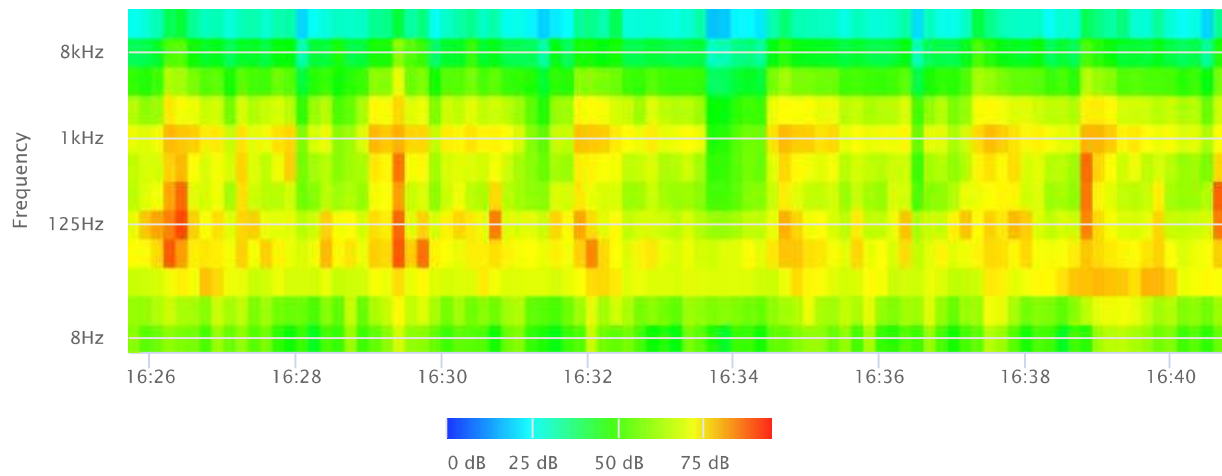
Statistics

LAS 2.0	81.6 dB
LAS 8.0	79.0 dB
LAS 25.0	76.5 dB
LAS 50.0	72.2 dB
LAS 66.6	68.7 dB
LAS 90.0	61.4 dB

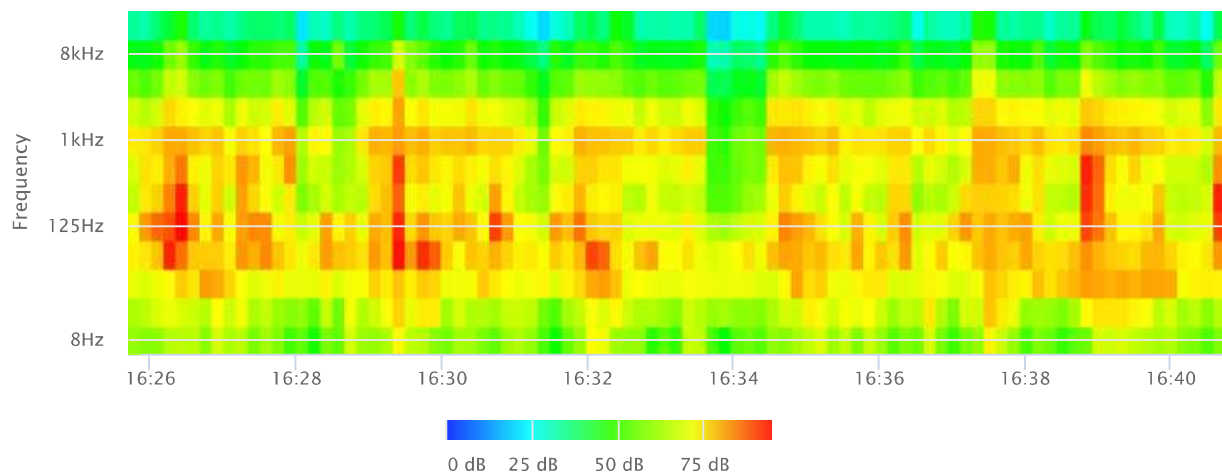
Time History



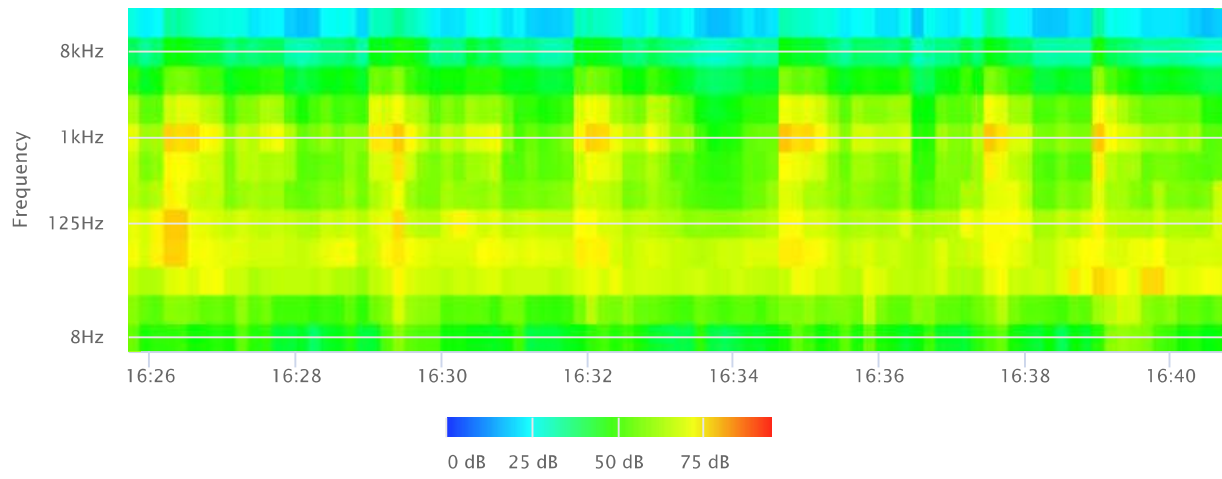
OBA 1/1 Leq



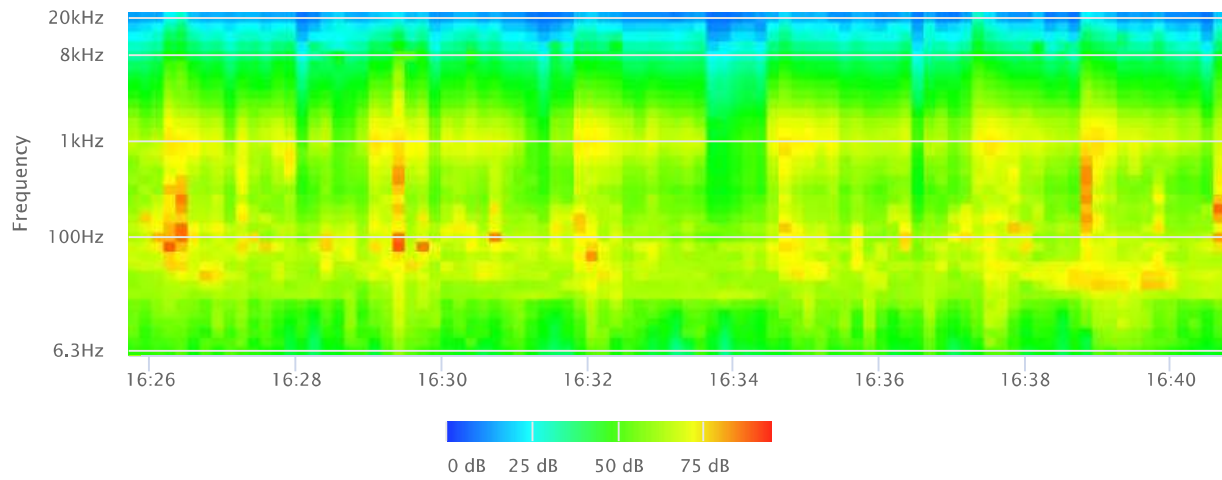
OBA 1/1 Lmax



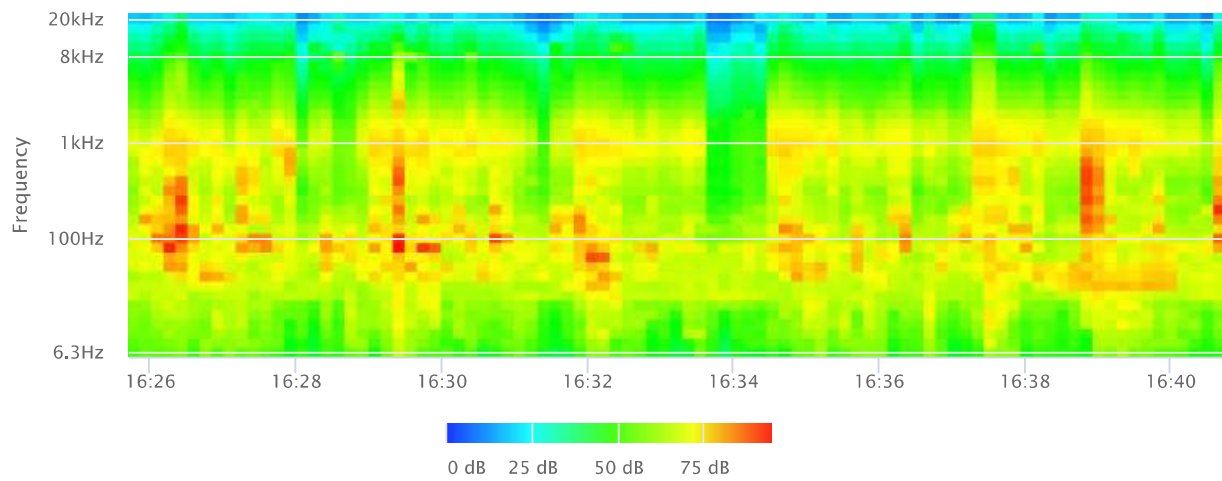
OBA 1/1 Lmin



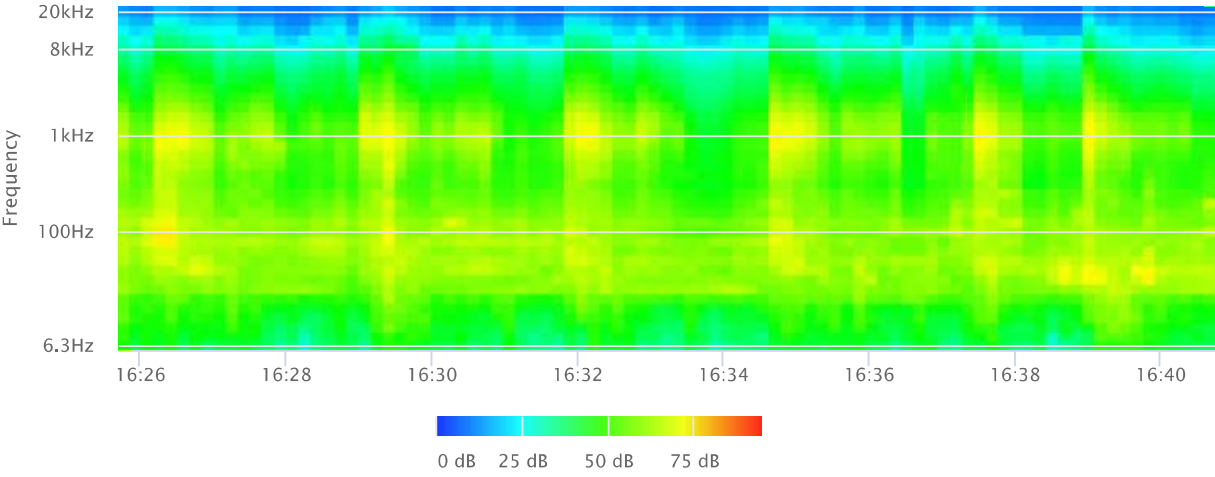
OBA 1/3 Leq



OBA 1/3 Lmax



OBA 1/3 Lmin



Measurement Report

Report Summary

Meter's File Name LxT_Data,643.s Computer's File Name LxT_0003099-20251007 170101-LxT_Data,643.lbin
 Meter LxT1 0003099
 Firmware 2.404
 User Ian Edward Gallagher Location NM3 33°41'1.10"N 117° 9'14.33"W
 Job Description 15 minute noise measurement
 Note KWAQN Menifee Boardwalk Project
 Start Time 2025-10-07 17:01:01 Duration 0:15:00.0
 End Time 2025-10-07 17:16:01 Run Time 0:15:00.0 Pause Time 0:00:00.0

Results

Overall Metrics

LA _{eq}	64.1 dB		
LAE	93.6 dB	SEA	--- dB
EA	254.6 μPa ² h	LAFTM5	67.9 dB
EA8	8.1 mPa ² h		
EA40	40.7 mPa ² h		
LA _{peak}	89.4 dB	2025-10-07 17:01:29	
LAS _{max}	76.0 dB	2025-10-07 17:11:17	
LAS _{min}	49.7 dB	2025-10-07 17:11:43	
LA _{eq}	64.1 dB		
LC _{eq}	74.9 dB	LC _{eq} - LA _{eq}	10.8 dB
LAI _{eq}	65.3 dB	LAI _{eq} - LA _{eq}	1.2 dB

Exceedances

	Count	Duration
LAS > 65.0 dB	25	0:03:47.6
LAS > 85.0 dB	0	0:00:00.0
LA _{peak} > 135.0 dB	0	0:00:00.0
LA _{peak} > 137.0 dB	0	0:00:00.0
LA _{peak} > 140.0 dB	0	0:00:00.0

Community Noise

LDN	LDay	LNight	
--- dB	--- dB	0.0 dB	
LDEN	LDay	LEve	LNight
--- dB	--- dB	--- dB	--- dB

Any Data

	Level	A Time Stamp	Level	C Time Stamp	Level	Z Time Stamp
L _{eq}	64.1 dB		74.9 dB		--- dB	
LS _(max)	76.0 dB	2025-10-07 17:11:17	--- dB		--- dB	
LS _(min)	49.7 dB	2025-10-07 17:11:43	--- dB		--- dB	
L _{Peak(max)}	89.4 dB	2025-10-07 17:01:29	--- dB		--- dB	

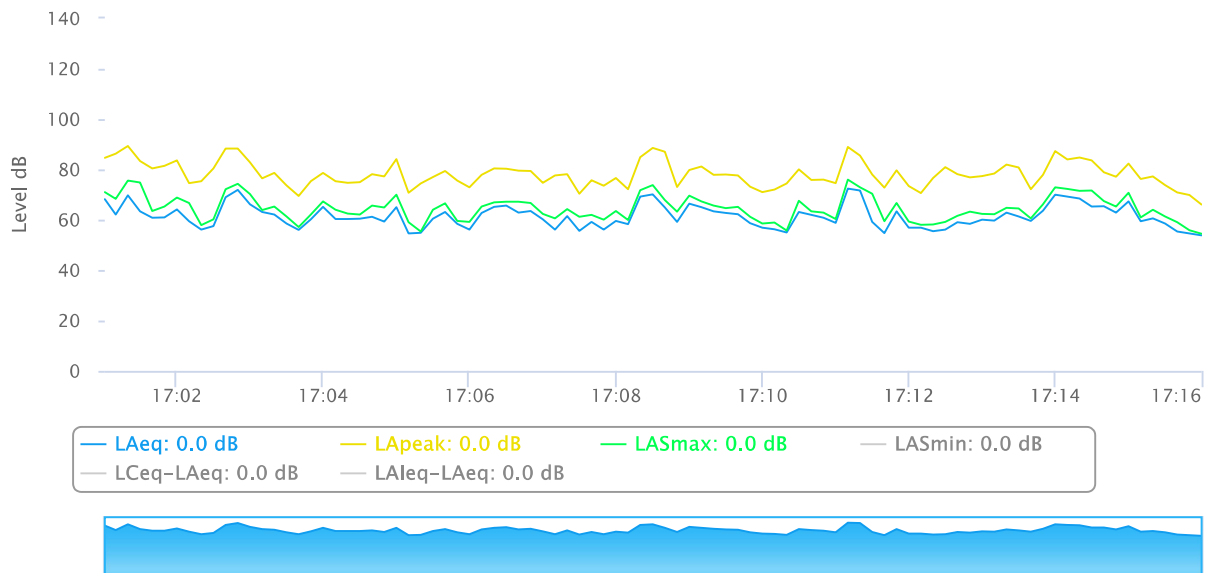
Overloads

Count	Duration	OBA Count	OBA Duration
0	0:00:00.0	0	0:00:00.0

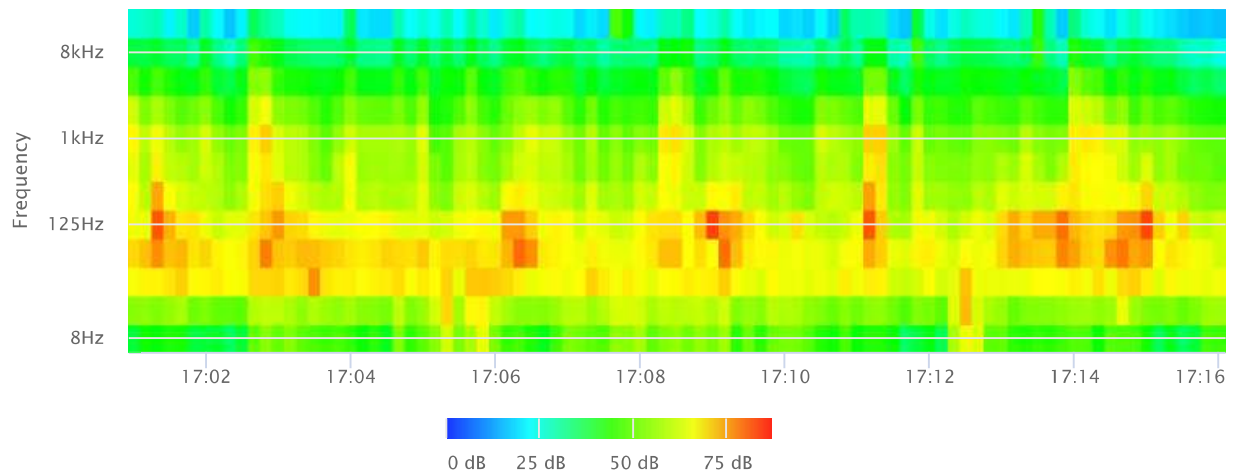
Statistics

LAS 2.0	72.4 dB
LAS 8.0	68.9 dB
LAS 25.0	63.8 dB
LAS 50.0	60.5 dB
LAS 66.6	58.6 dB
LAS 90.0	55.3 dB

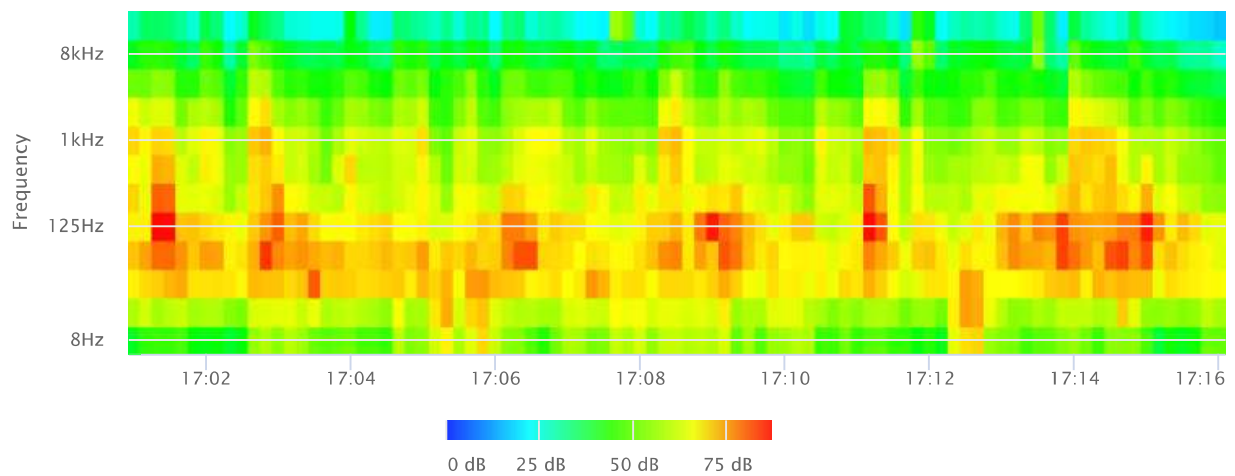
Time History



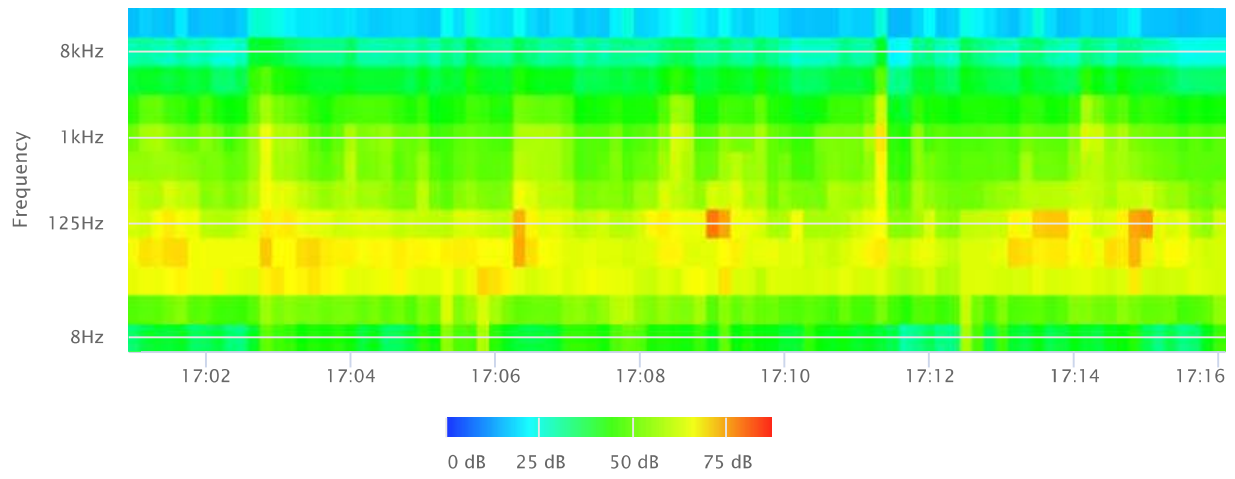
OBA 1/1 Leq



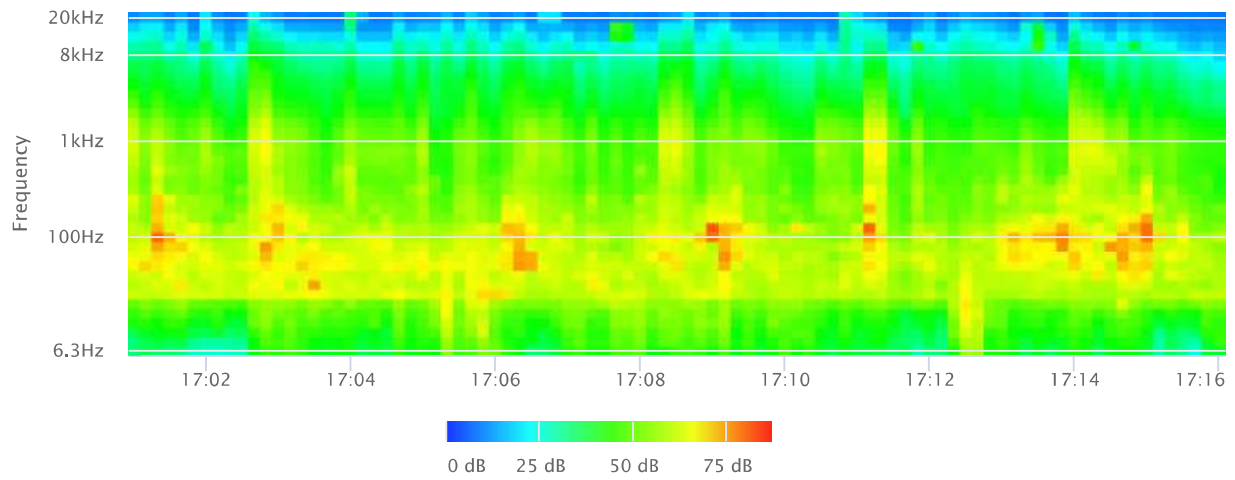
OBA 1/1 Lmax



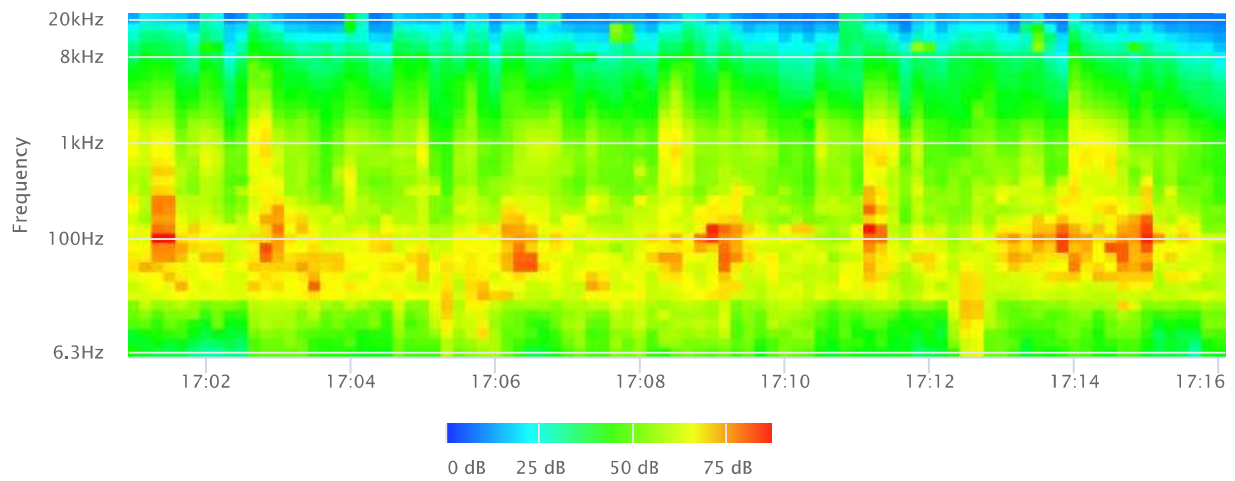
OBA 1/1 Lmin



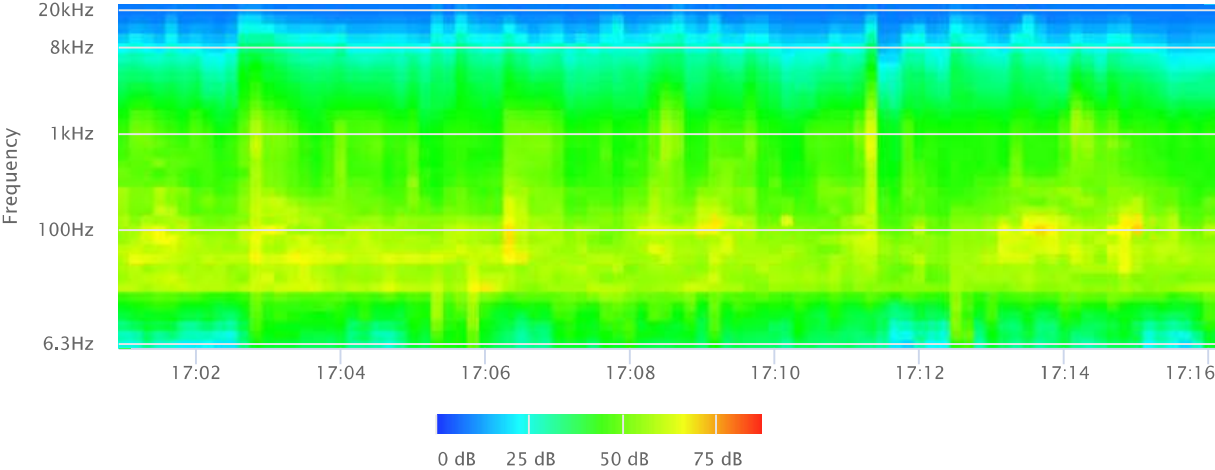
OBA 1/3 Leq



OBA 1/3 Lmax



OBA 1/3 Lmin



Measurement Report

Report Summary

Meter's File Name LxT_Data.644.s Computer's File Name LxT_0003099-20251007 174241-LxT_Data.644.lbin
Meter LxT1 0003099
Firmware 2.404
User Ian Edward Gallagher Location NM4 33°41'0.65"N 117° 9'24.06"W
Job Description 15 minute noise measurement
Note KWAQN Menifee Boardwalk Project
Start Time 2025-10-07 17:42:41 Duration 0:15:00.0
End Time 2025-10-07 17:57:41 Run Time 0:15:00.0 Pause Time 0:00:00.0

Results

Overall Metrics

LA _{eq}	54.9 dB		
LAE	84.4 dB	SEA	--- dB
EA	30.6 μPa ² h	LAFTM5	64.0 dB
EA8	979.7 μPa ² h		
EA40	4.9 mPa ² h		
LA _{peak}	94.7 dB	2025-10-07 17:46:36	
LAS _{max}	70.2 dB	2025-10-07 17:51:27	
LAS _{min}	42.3 dB	2025-10-07 17:44:11	
LA _{eq}	54.9 dB		
LC _{eq}	65.3 dB	LC _{eq} - LA _{eq}	10.5 dB
LAI _{eq}	61.8 dB	LAI _{eq} - LA _{eq}	7.0 dB

Exceedances

	Count	Duration
LAS > 65.0 dB	8	0:00:15.2
LAS > 85.0 dB	0	0:00:00.0
LA _{peak} > 135.0 dB	0	0:00:00.0
LA _{peak} > 137.0 dB	0	0:00:00.0
LA _{peak} > 140.0 dB	0	0:00:00.0

Community Noise	LDN	LDay	LNight
	--- dB	--- dB	0.0 dB

	LDEN	LDay	LEve	LNight
	--- dB	--- dB	--- dB	--- dB

Any Data

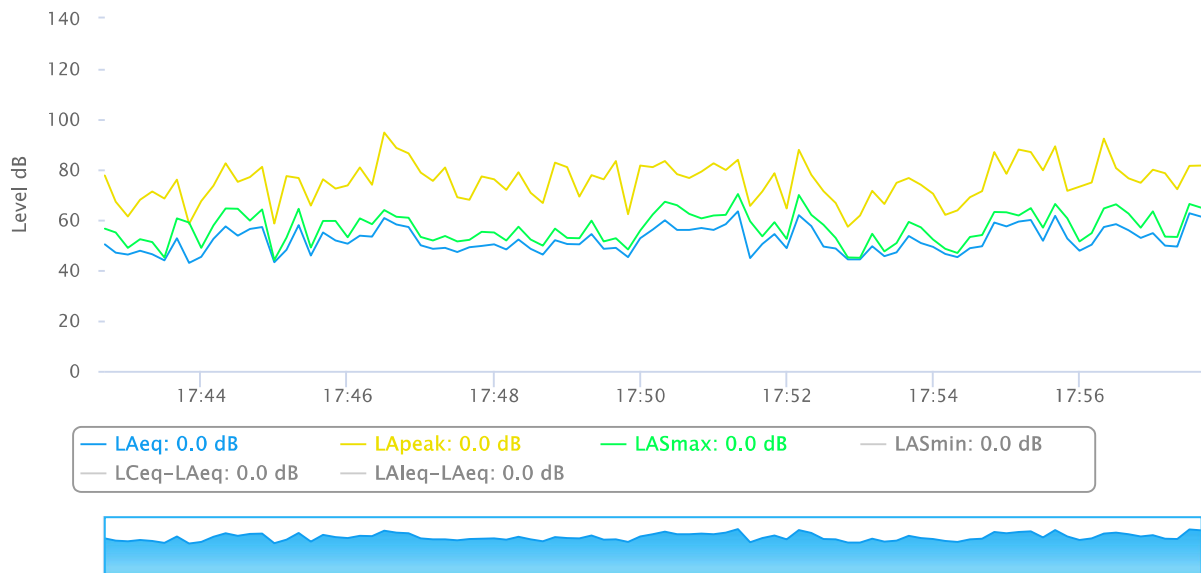
	Level	A Time Stamp	Level	C Time Stamp	Level	Z Time Stamp
L _{eq}	54.9 dB		65.3 dB		--- dB	
LS _(max)	70.2 dB	2025-10-07 17:51:27	--- dB		--- dB	
LS _(min)	42.3 dB	2025-10-07 17:44:11	--- dB		--- dB	
L _{Peak(max)}	94.7 dB	2025-10-07 17:46:36	--- dB		--- dB	

Overloads	Count	Duration	OBA Count	OBA Duration
	0	0:00:00.0	0	0:00:00.0

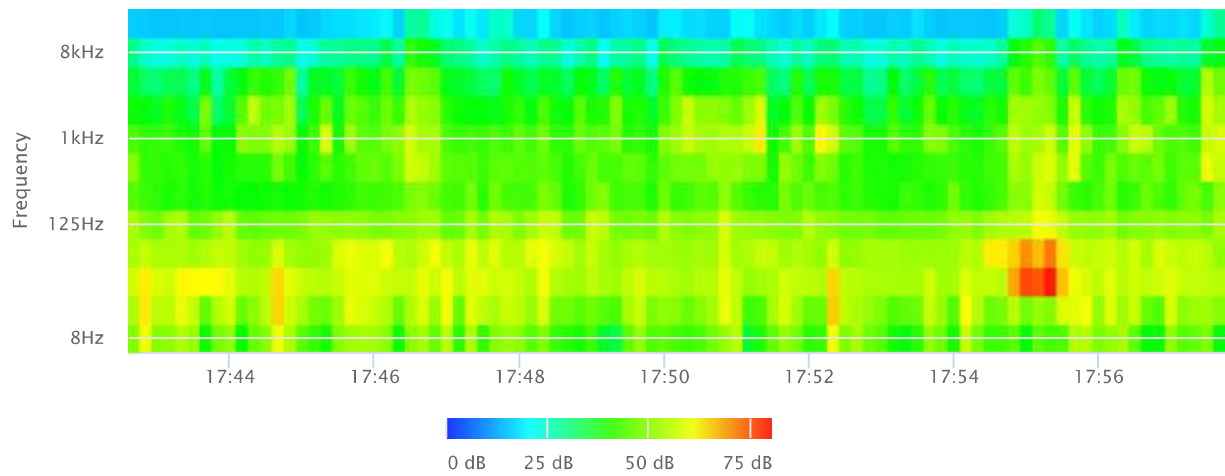
Statistics

LAS 2.0	63.4 dB
LAS 8.0	59.8 dB
LAS 25.0	54.2 dB
LAS 50.0	49.6 dB
LAS 66.6	47.6 dB
LAS 90.0	44.8 dB

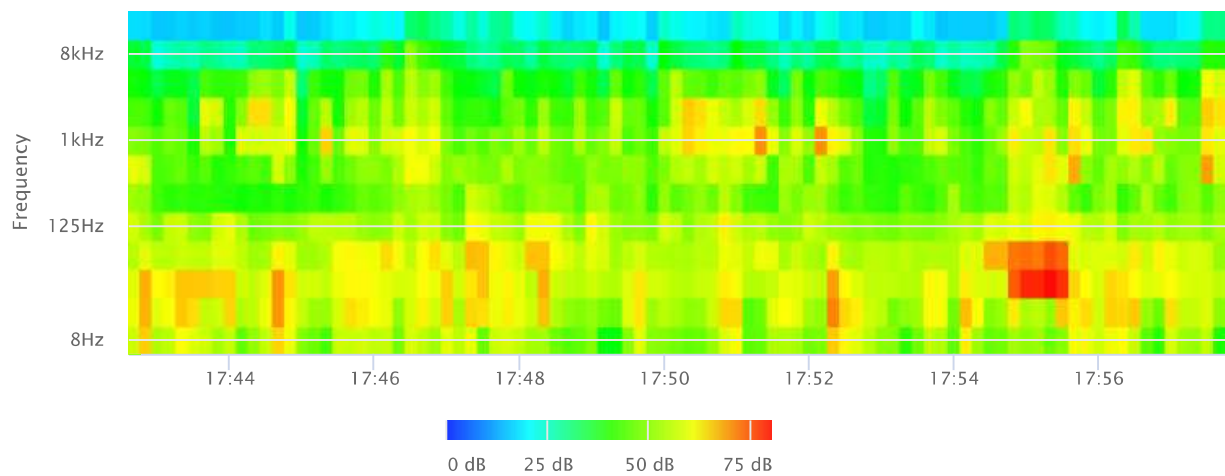
Time History



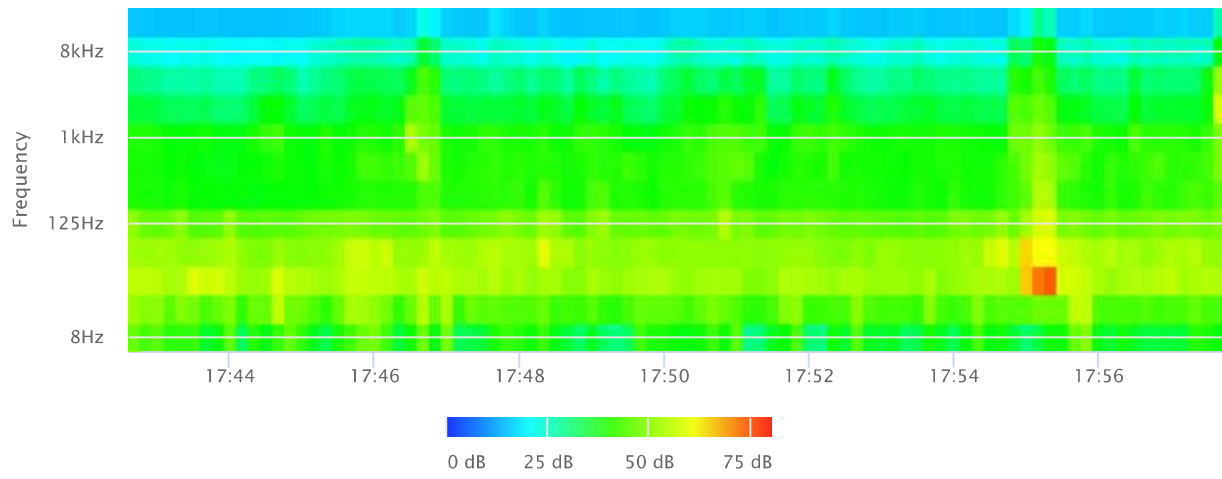
OBA 1/1 Leq



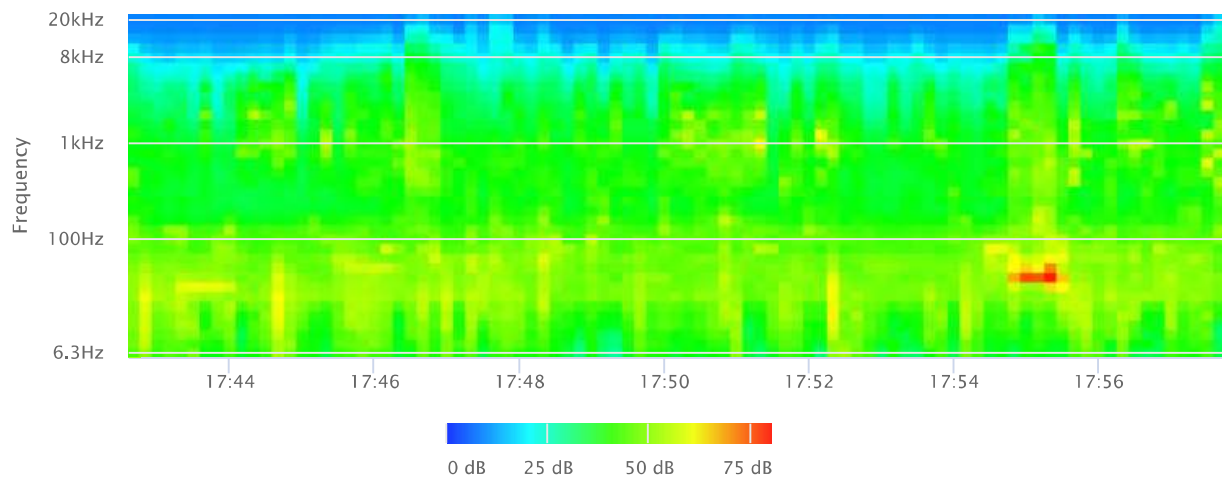
OBA 1/1 Lmax



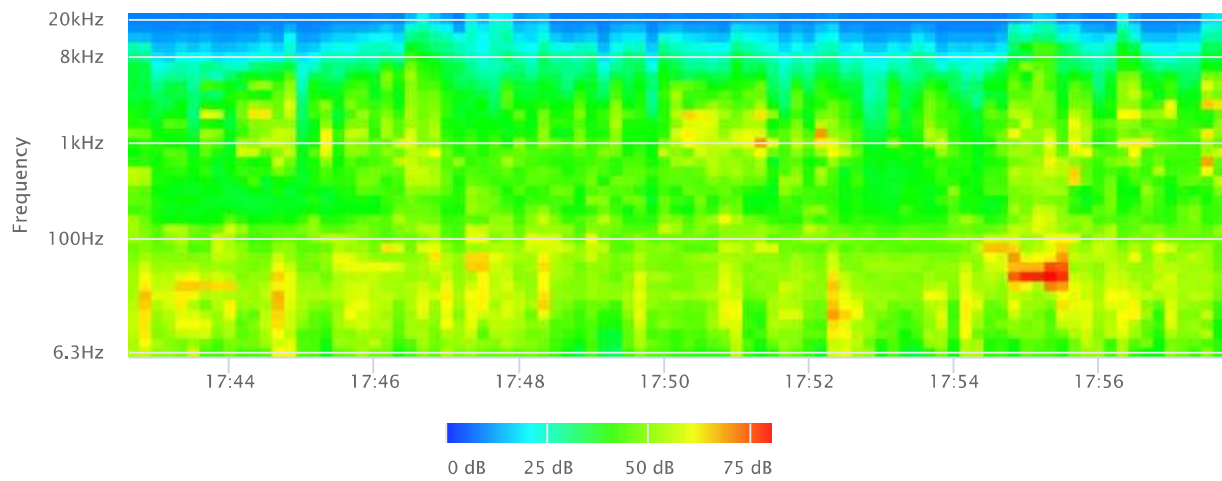
OBA 1/1 Lmin



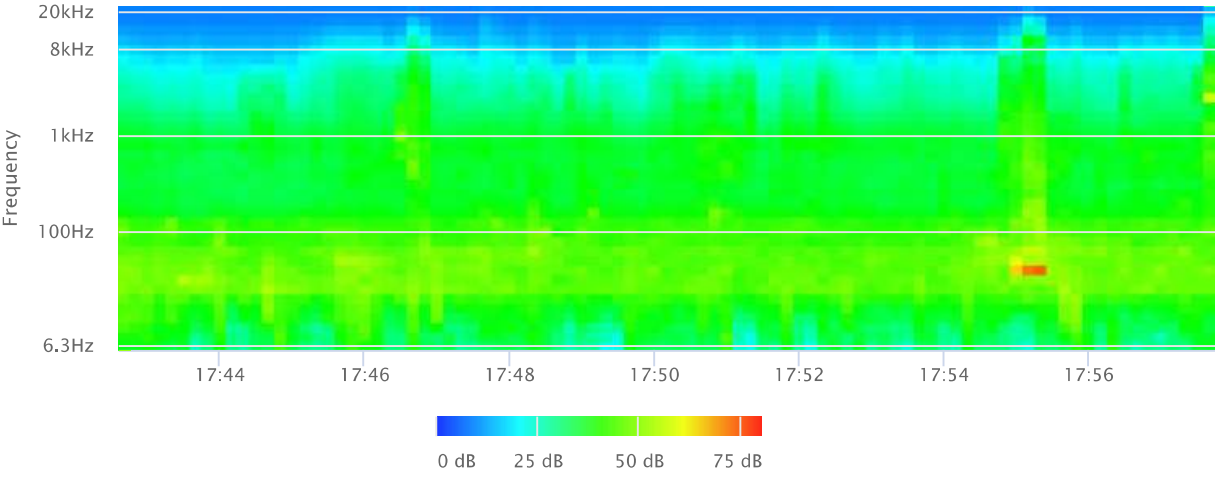
OBA 1/3 Leq



OBA 1/3 Lmax



OBA 1/3 Lmin



GROUNDBORNE VIBRATION ANALYSIS			
Project:	Menifee Boardwalk	Date:	10/24/25
Source:	Vibratory Roller		
Scenario:	At the western boundary		
Location:	Project Site		
Address:	residential uses adjacent to western boundary		
PPV = PPVref(25/D)^n (in/sec)			
INPUT			
Equipment = Type	1	Vibratory Roller	INPUT SECTION IN GREEN
PPVref =	0.21	Reference PPV (in/sec) at 10 ft.	
D =	30.00	Distance from Equipment to Receiver (ft)	
n =	1.50	Vibration attenuation rate through the ground	
Note: Based on reference equations from Vibration Guidance Manual, California Department of Transportation, 2013, pgs 35-40.			
RESULTS			
PPV =	0.040	IN/SEC	OUTPUT IN BLUE

Equipment PPV Reference Levels

Type	Equipment	Reference PPV at 25 ft. (in/sec)*
1	Vibratory Roller	0.210
2	Large Bulldozer	0.089
3	Drilled Pile	0.100
4	Loaded Trucks	0.076
5	Jackhammer	0.035
6	Small Bulldozer	0.003
7	Crack and Seat	2.400

*Drilled pile reference PPV is at 10 feet (in/sec)(source: <https://tinyurl.com/264s9ybs>)