

APPENDIX H
NOISE DATA AND CALCULATIONS



Noise Measurement Report Form - Part A

Date: 12/20/24 Day of Week: Friday Time: 1122 Project Number: 7307

Monitoring Segment / Area: 1 Monitoring Site Address: 9801 Talbert Ave

Measurement Taken By: Amir Ayati of UltraSystems Environmental

Average Wind Speed: 1.1 mph [km/hr] Compass Heading (meter ⊥ to source) 164°S

Temp: 65.1 °F Relative Humidity: 67.2 % Compass Heading (into wind) 204°SW

Cloud Cover Class (1 = heavy overcast, 2 = lightly overcast, 3 = sunny) 3

Approximate distance of sound level meter from receptor location: 25 feet

Approximate distance of sound level meter from construction site: _____
(Leave Blank for Baseline Ambient)

Receptor Land Use (Check One): Residential Institutional Comm./Ind. Recreational Religious

Sound Level Meter: Make and Model: Quest SoundPro DL-1-1/3 Serial Number: BLH080004

Meter Setting: A-Weighted Sound Level (SLOW) A-Weighted Sound Level (FAST)

Measurement Start Time: 1122 Measurement End Time: 1137

Total Measurement Time: 15 min Session File Name (e.g., S012): S001

Check the measurement purpose:

Baseline condition Ongoing construction Caltrans Complaint response

Measurement Results

Measurement Type	Measured Levels (dB)	
Calibration	Pre: <u>114.0</u>	Post: <u>113.9</u>
L _{eq} (h)	Slow: <u>67.6</u>	Fast:
L _{max}	Slow: <u>81.6</u>	Fast:
L ₉₀	Slow: <u>54.8</u>	Fast:

Field Notes:

- Traffic noise along Talbert Ave
- Cars honking at 1132
-

Noise Monitor's Signature: [Signature] Date: 12/20/24


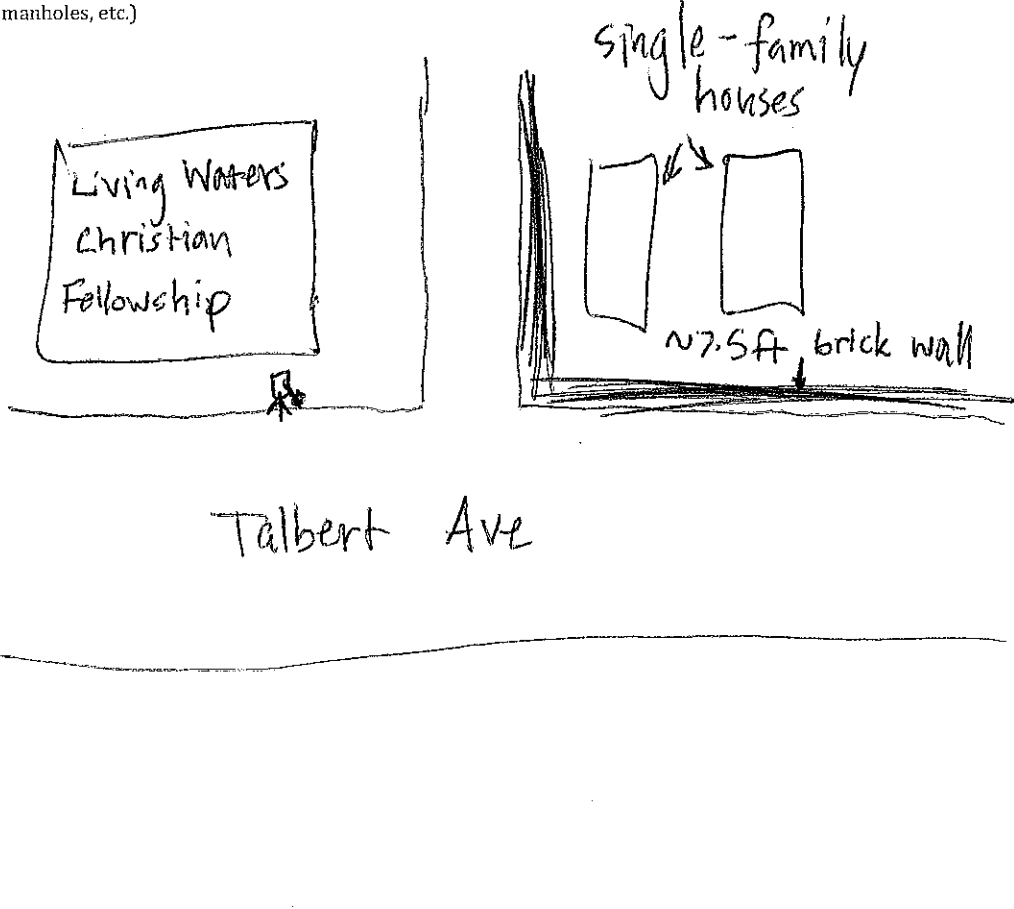
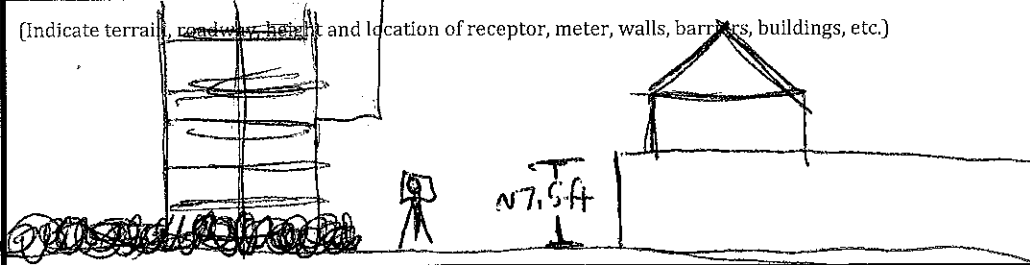


Noise Measurement Report Form - Part B

Date: 12/20/24 Day of Week: Friday Time: 1122 Project Number: 7307

Monitoring Segment / Area: 1 Monitoring Site Address: 9801 Talbert Ave

Site Map

<p>Plan View</p>  <p>North Arrow (fill-in)</p>	<p>(Indicate site location, receptor location, meter location, distance in feet to landmarks, roadways, travel lane directions, geographical objects: trees, water, buildings, signs, store names, hydrants, power & telephone lines, manholes, etc.)</p> 	
<p>Elevation View</p>	<p>(Indicate terrain, roadway height and location of receptor, meter, walls, barriers, buildings, etc.)</p> 	
<p>Latitude: <u>33.701857°</u></p>	<p>Longitude: <u>-117.957594°</u></p>	<p>Elevation: <u>25ft</u></p>

Noise Monitor's Signature: [Signature] Date: 12/20/24

Session Report

12/20/2024

Information Panel

Name S001_BLH080004_20122024_140748
Start Time 12/20/2024 11:22:32 AM
Stop Time 12/20/2024 11:37:32 AM
Device Name BLH080004
Model Type SoundPro DL
Device Firmware Rev R.13J
Comments

Summary Data Panel

Description	Meter	Value	Description	Meter	Value
Leq	1	67.6 dB	L90	1	54.8 dB
Lmax	1	81.6 dB	Lmin	1	48.6 dB
Exchange Rate	1	3 dB	Weighting	1	A
Response	1	SLOW	Bandwidth	1	OFF
Exchange Rate	2	3 dB	Weighting	2	C
Response	2	FAST			

Statistics Table

dB:	0.0	0.1	0.2	0.3	0.4	0.5	0.6	0.7	0.8	0.9	%
48:	0.00	0.00	0.00	0.00	0.00	0.00	0.02	0.07	0.05	0.07	0.21
49:	0.10	0.06	0.07	0.17	0.09	0.09	0.06	0.10	0.05	0.05	0.83
50:	0.06	0.08	0.13	0.15	0.07	0.07	0.14	0.12	0.14	0.08	1.03
51:	0.06	0.04	0.03	0.05	0.05	0.15	0.10	0.08	0.04	0.04	0.64
52:	0.05	0.08	0.25	0.22	0.20	0.17	0.22	0.30	0.19	0.16	1.85
53:	0.16	0.23	0.21	0.38	0.45	0.33	0.38	0.25	0.20	0.18	2.78
54:	0.18	0.27	0.14	0.19	0.29	0.32	0.33	0.32	0.38	0.41	2.82
55:	0.55	0.54	0.39	0.42	0.49	0.45	0.42	0.54	0.61	0.46	4.86
56:	0.40	0.37	0.40	0.43	0.42	0.35	0.43	0.30	0.33	0.40	3.82
57:	0.30	0.34	0.20	0.31	0.37	0.51	0.32	0.34	0.26	0.26	3.22
58:	0.34	0.31	0.26	0.33	0.33	0.30	0.26	0.32	0.25	0.23	2.92
59:	0.28	0.36	0.34	0.38	0.34	0.43	0.43	0.42	0.43	0.51	3.90
60:	0.44	0.45	0.28	0.40	0.33	0.31	0.34	0.45	0.35	0.46	3.80

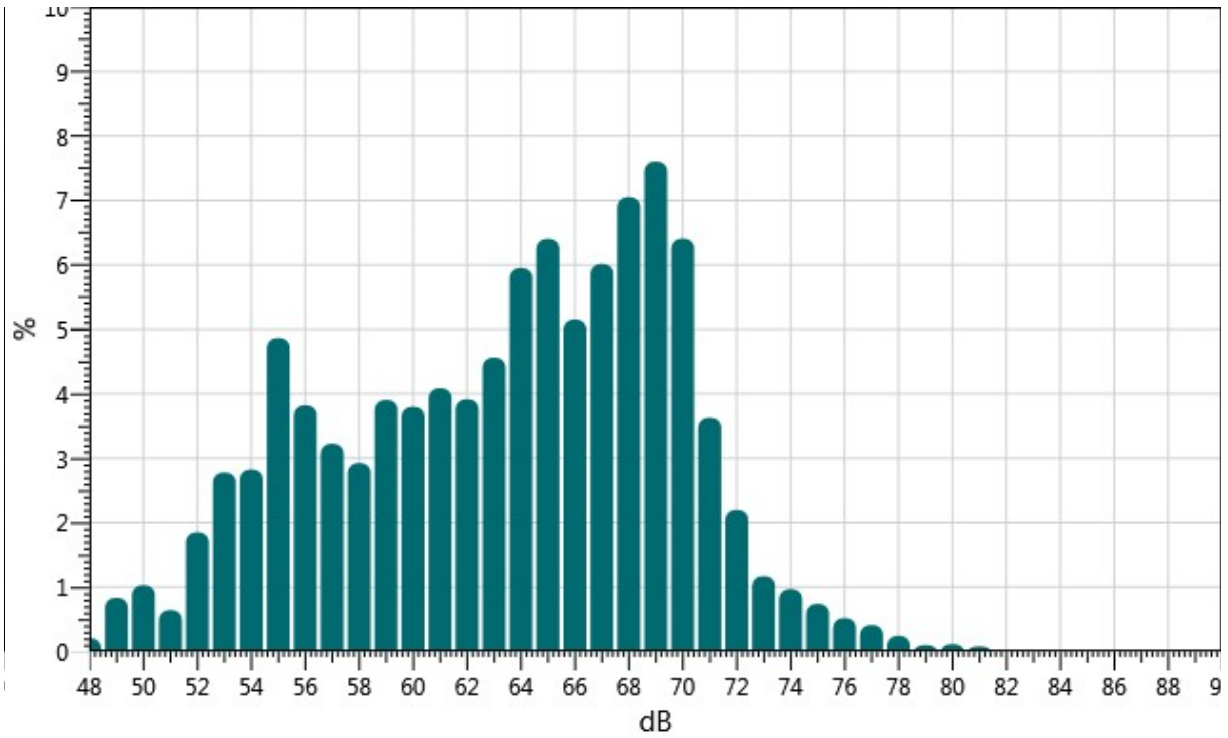


61:	0.47	0.47	0.40	0.34	0.37	0.35	0.43	0.42	0.39	0.44	4.09
62:	0.42	0.42	0.35	0.35	0.36	0.35	0.35	0.39	0.44	0.48	3.91
63:	0.55	0.57	0.38	0.43	0.46	0.45	0.39	0.40	0.48	0.45	4.56
64:	0.49	0.46	0.64	0.69	0.59	0.52	0.71	0.62	0.56	0.68	5.95
65:	0.72	0.67	0.68	0.86	0.73	0.61	0.59	0.54	0.45	0.54	6.40
66:	0.57	0.52	0.30	0.46	0.57	0.52	0.53	0.56	0.57	0.54	5.15
67:	0.52	0.63	0.55	0.62	0.61	0.76	0.59	0.56	0.63	0.56	6.01
68:	0.62	0.51	0.70	0.78	0.77	0.87	0.77	0.70	0.68	0.66	7.05
69:	0.88	0.84	0.67	0.68	0.75	0.81	0.85	0.76	0.70	0.66	7.60
70:	0.75	0.78	0.74	0.73	0.56	0.61	0.52	0.58	0.61	0.51	6.41
71:	0.43	0.37	0.34	0.33	0.34	0.40	0.42	0.37	0.33	0.29	3.63
72:	0.36	0.37	0.21	0.13	0.20	0.21	0.18	0.20	0.19	0.15	2.20
73:	0.15	0.13	0.13	0.11	0.13	0.12	0.11	0.11	0.09	0.10	1.17
74:	0.10	0.14	0.11	0.08	0.07	0.09	0.10	0.08	0.10	0.10	0.97
75:	0.10	0.08	0.09	0.04	0.08	0.07	0.06	0.07	0.07	0.06	0.74
76:	0.14	0.05	0.04	0.04	0.04	0.03	0.05	0.04	0.04	0.04	0.52
77:	0.03	0.03	0.03	0.03	0.04	0.04	0.03	0.06	0.06	0.03	0.41
78:	0.03	0.04	0.03	0.03	0.02	0.04	0.02	0.01	0.01	0.01	0.24
79:	0.01	0.01	0.01	0.01	0.01	0.01	0.01	0.01	0.01	0.01	0.10
80:	0.01	0.01	0.01	0.01	0.01	0.01	0.01	0.02	0.01	0.01	0.11
81:	0.01	0.01	0.01	0.01	0.01	0.03	0.00	0.00	0.00	0.00	0.08



Statistics Chart

S001_BLH080004_20122024_140748: Statistics Chart



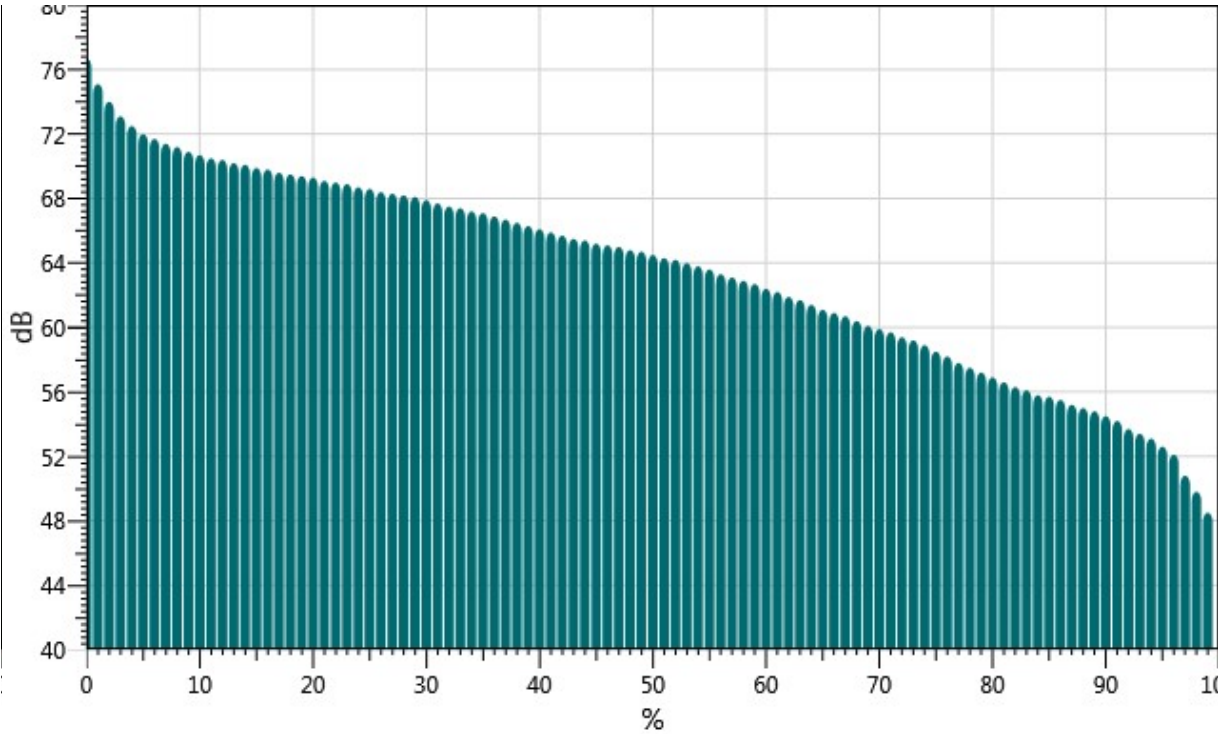
Exceedance Table

	0%	1%	2%	3%	4%	5%	6%	7%	8%	9%
0%:		76.7	75.1	74.0	73.1	72.5	72.0	71.7	71.4	71.2
10%:	70.9	70.7	70.5	70.4	70.2	70.1	69.9	69.8	69.6	69.5
20%:	69.4	69.3	69.1	69.0	68.9	68.7	68.6	68.4	68.3	68.2
30%:	68.1	67.9	67.7	67.5	67.4	67.2	67.1	66.9	66.7	66.5
40%:	66.3	66.1	65.9	65.7	65.5	65.4	65.2	65.1	65.0	64.8
50%:	64.7	64.5	64.3	64.2	64.0	63.8	63.6	63.3	63.1	62.9
60%:	62.7	62.4	62.2	61.9	61.7	61.4	61.1	60.9	60.7	60.4
70%:	60.1	59.9	59.7	59.4	59.2	58.9	58.5	58.2	57.8	57.5
80%:	57.2	56.9	56.6	56.3	56.1	55.8	55.7	55.5	55.2	55.0
90%:	54.8	54.5	54.2	53.7	53.4	53.1	52.6	52.1	50.8	49.8
100%:	48.5									



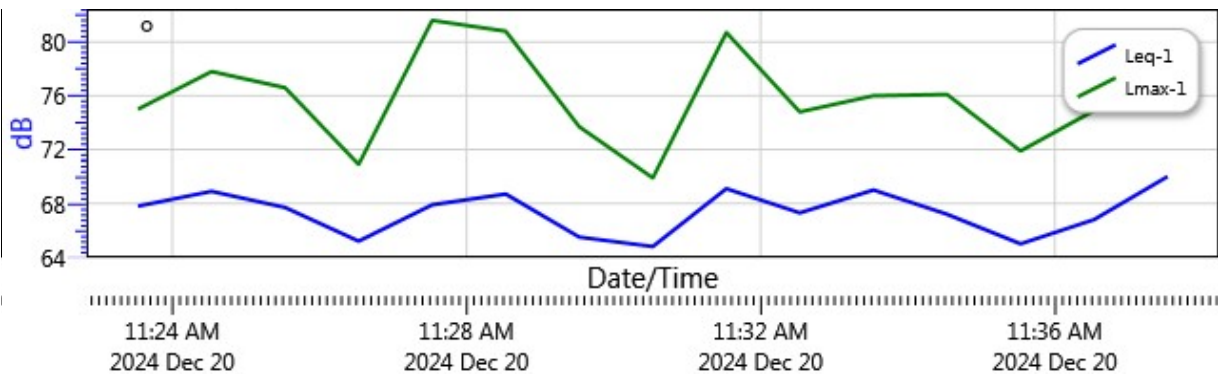
Exceedance Chart

S001_BLH080004_20122024_140748: Exceedance Chart



Logged Data Chart

S001_BLH080004_20122024_140748: Logged Data Chart





Noise Measurement Report Form - Part A

Date: 12/20/24 Day of Week: Friday Time: ~~1240~~ ¹²⁴⁰ Project Number: 7307

Monitoring Segment / Area: 2 Monitoring Site Address: 18070 Scanlan Ct

Measurement Taken By: Amir Ayati of UltraSystems Environmental

Average Wind Speed: 2.6 mph [km/hr] Compass Heading (meter ⊥ to source) 170°S

Temp: 69.8 °F Relative Humidity: 64.3 % Compass Heading (into wind) 172°S

Cloud Cover Class (1 = heavy overcast, 2 = lightly overcast, 3 = sunny) 3

Approximate distance of sound level meter from receptor location: 17 feet

Approximate distance of sound level meter from construction site: _____
(Leave Blank for Baseline Ambient)

Receptor Land Use (Check One): Residential Institutional Comm./Ind. Recreational

Sound Level Meter: Make and Model: Quest SoundPro DL-1-1/3 Serial Number: BLH080004

Meter Setting: A-Weighted Sound Level (SLOW) A-Weighted Sound Level (FAST)

Measurement Start Time: ~~1240~~ 1240 Measurement End Time: ~~1255~~ 1255

Total Measurement Time: 15 min Session File Name (e.g., S012): S0034

Check the measurement purpose:

Baseline condition Ongoing construction Caltrans Complaint response

Measurement Results

Measurement Type	Measured Levels (dB)	
Calibration	Pre: <u>114.0</u>	Post: <u>114.2</u>
L _{eq} (h)	Slow: <u>51.1</u>	Fast: _____
L _{max}	Slow: <u>68.0</u>	Fast: _____
L ₉₀	Slow: <u>43.4</u>	Fast: _____

Field Notes:

- Traffic noise along Foster St.
- Garbage truck on Scanlan for ~ 5 minutes
- _____

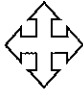
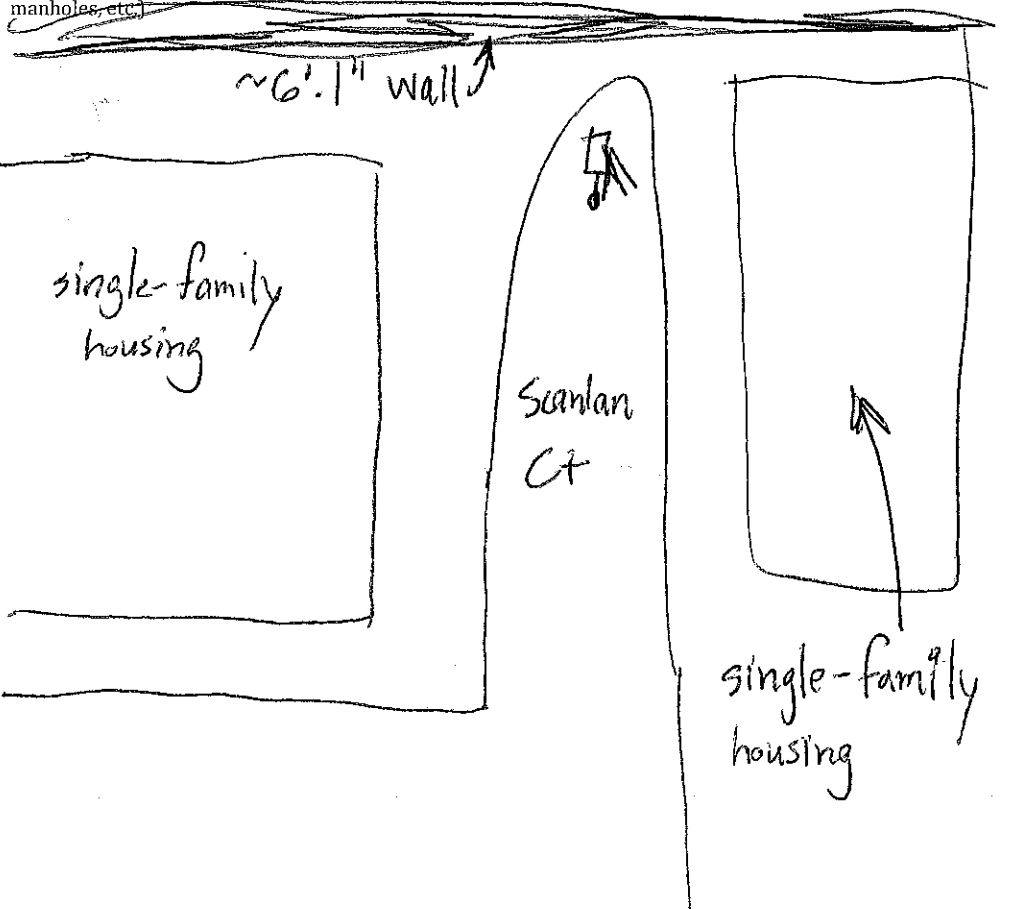
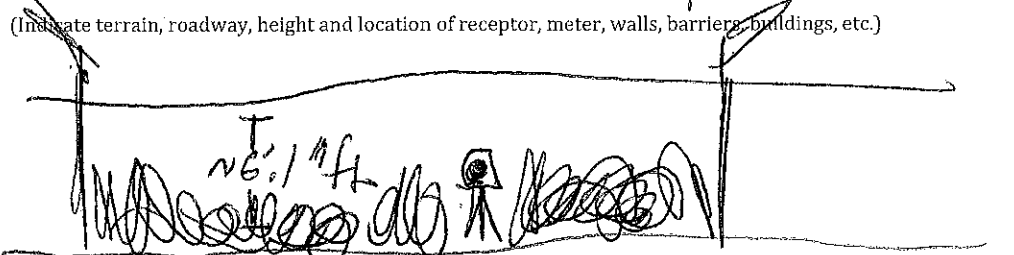
Noise Monitor's Signature: [Signature] Date: 12/20/24



Noise Measurement Report Form - Part B

Date: 12/20/24 Day of Week: Friday Time: ~~12:33~~ ¹²⁴⁰ Project Number: 7307
Monitoring Segment / Area: 2 Monitoring Site Address: 18070 Scanlan Ct

Site Map

<p>Plan View</p>  <p>North Arrow (fill-in)</p>	<p>(Indicate site location, receptor location, meter location, distance in feet to landmarks, roadways, travel lane directions, geographical objects: trees, water, buildings, signs, store names, hydrants, power & telephone lines, manholes, etc.)</p>  <p>~6' wall</p> <p>single-family housing</p> <p>Scanlan Ct</p> <p>single-family housing</p>	
<p>Elevation View</p>	<p>(Indicate terrain, roadway, height and location of receptor, meter, walls, barriers, buildings, etc.)</p>  <p>~6' wall</p>	
<p>Latitude: <u>33.700778°</u></p>	<p>Longitude: <u>-117.957391°</u></p>	<p>Elevation: <u>28 ft</u></p>

Noise Monitor's Signature: [Signature] Date: 12/20/24

Session Report

12/20/2024

Information Panel

Name S004_BLH080004_20122024_140815
Start Time 12/20/2024 12:40:27 PM
Stop Time 12/20/2024 12:55:27 PM
Device Name BLH080004
Model Type SoundPro DL
Device Firmware Rev R.13J
Comments

Summary Data Panel

Description	Meter	Value	Description	Meter	Value
Leq	1	51.1 dB	L90	1	43.4 dB
Lmax	1	68 dB	Lmin	1	41.2 dB
Exchange Rate	1	3 dB	Weighting	1	A
Response	1	SLOW	Bandwidth	1	OFF
Exchange Rate	2	3 dB	Weighting	2	C
Response	2	FAST			

Statistics Table

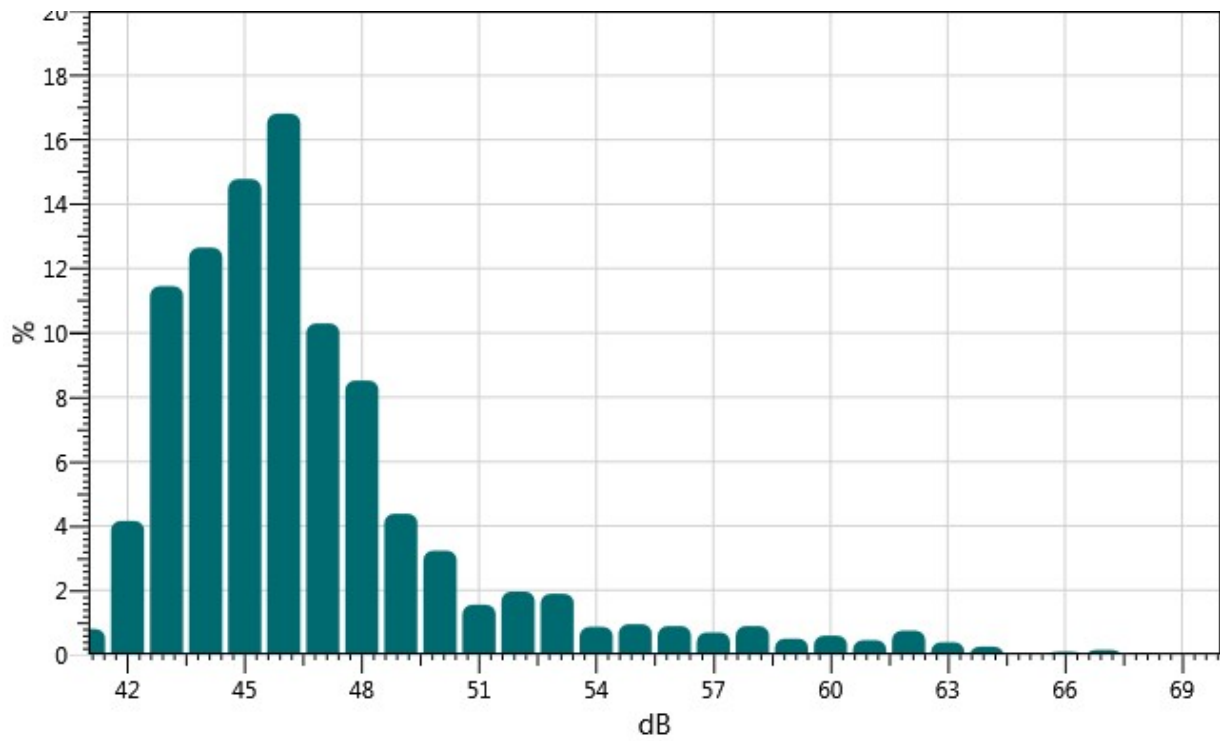
dB:	0.0	0.1	0.2	0.3	0.4	0.5	0.6	0.7	0.8	0.9	%
41:	0.00	0.00	0.03	0.10	0.04	0.08	0.05	0.10	0.18	0.21	0.80
42:	0.17	0.39	0.42	0.72	0.60	0.56	0.45	0.31	0.30	0.24	4.16
43:	0.58	0.73	1.04	1.21	1.16	1.19	1.43	1.38	1.34	1.39	11.45
44:	1.13	0.97	1.27	1.50	1.47	1.45	1.25	0.98	1.16	1.47	12.65
45:	1.44	1.33	1.36	1.62	1.38	1.26	1.23	1.43	1.59	2.14	14.78
46:	2.21	2.07	1.74	1.54	1.29	1.72	1.58	1.65	1.57	1.44	16.81
47:	1.03	1.04	0.95	0.95	1.00	1.00	0.95	1.15	1.17	1.06	10.29
48:	1.15	1.17	0.55	0.81	0.78	0.79	0.89	0.83	0.80	0.76	8.52
49:	0.78	0.62	0.50	0.45	0.30	0.31	0.33	0.40	0.39	0.30	4.38
50:	0.29	0.28	0.33	0.36	0.41	0.30	0.28	0.30	0.33	0.36	3.23
51:	0.27	0.28	0.15	0.17	0.20	0.11	0.10	0.07	0.08	0.13	1.55
52:	0.14	0.20	0.19	0.21	0.20	0.15	0.19	0.20	0.29	0.19	1.96
53:	0.21	0.26	0.33	0.19	0.14	0.17	0.14	0.19	0.13	0.14	1.89



54:	0.14	0.09	0.07	0.08	0.07	0.06	0.08	0.08	0.09	0.11	0.86
55:	0.12	0.10	0.08	0.06	0.09	0.07	0.10	0.10	0.11	0.12	0.95
56:	0.10	0.07	0.09	0.08	0.10	0.13	0.09	0.07	0.08	0.09	0.89
57:	0.10	0.06	0.04	0.09	0.04	0.08	0.07	0.08	0.09	0.05	0.69
58:	0.09	0.07	0.09	0.08	0.08	0.09	0.09	0.12	0.09	0.09	0.89
59:	0.06	0.06	0.07	0.05	0.06	0.04	0.03	0.05	0.05	0.03	0.50
60:	0.04	0.07	0.03	0.05	0.06	0.08	0.07	0.05	0.07	0.06	0.59
61:	0.06	0.06	0.04	0.04	0.03	0.04	0.04	0.05	0.04	0.05	0.45
62:	0.07	0.06	0.07	0.10	0.07	0.09	0.07	0.09	0.08	0.06	0.75
63:	0.06	0.06	0.02	0.04	0.09	0.03	0.02	0.03	0.02	0.01	0.39
64:	0.02	0.02	0.03	0.05	0.04	0.02	0.05	0.02	0.01	0.00	0.25
65:	0.00	0.00	0.00	0.00	0.00	0.00	0.00	0.00	0.01	0.00	0.04
66:	0.00	0.00	0.00	0.01	0.00	0.01	0.01	0.04	0.01	0.01	0.10
67:	0.02	0.01	0.01	0.01	0.01	0.01	0.01	0.01	0.02	0.03	0.15
68:	0.04	0.00	0.00	0.00	0.00	0.00	0.00	0.00	0.00	0.00	0.04

Statistics Chart

S004_BLH080004_20122024_140815: Statistics Chart



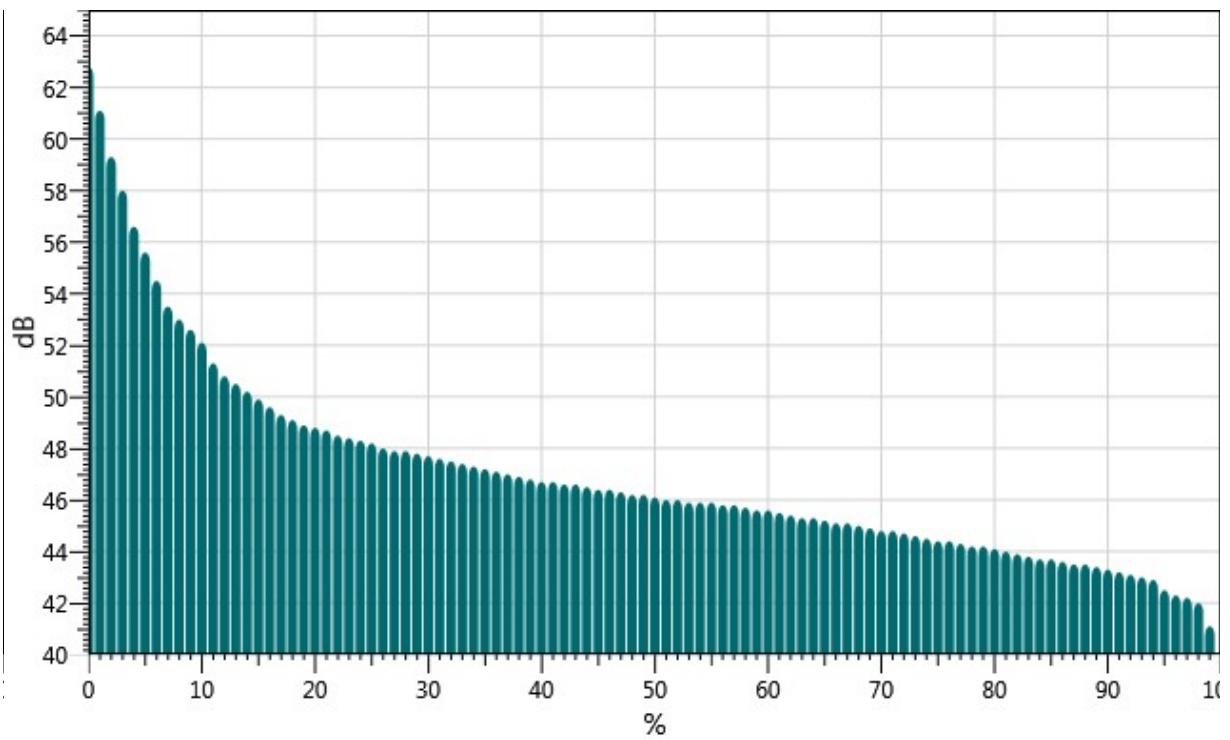
Exceedance Table

	0%	1%	2%	3%	4%	5%	6%	7%	8%	9%
--	----	----	----	----	----	----	----	----	----	----

0%:	62.8	61.1	59.3	58.0	56.6	55.6	54.5	53.5	53.0
10%:	52.6	52.1	51.3	50.8	50.5	50.2	49.9	49.6	49.3
20%:	48.9	48.8	48.7	48.5	48.4	48.3	48.2	48.0	47.9
30%:	47.8	47.7	47.6	47.5	47.4	47.3	47.2	47.1	47.0
40%:	46.8	46.7	46.7	46.6	46.6	46.5	46.4	46.4	46.3
50%:	46.2	46.1	46.0	46.0	45.9	45.9	45.9	45.8	45.8
60%:	45.6	45.6	45.5	45.4	45.3	45.3	45.2	45.1	45.1
70%:	44.9	44.8	44.8	44.7	44.6	44.5	44.4	44.4	44.3
80%:	44.2	44.1	44.0	43.9	43.8	43.7	43.7	43.6	43.5
90%:	43.4	43.3	43.2	43.1	43.0	42.9	42.5	42.3	42.2
100%:	41.1								

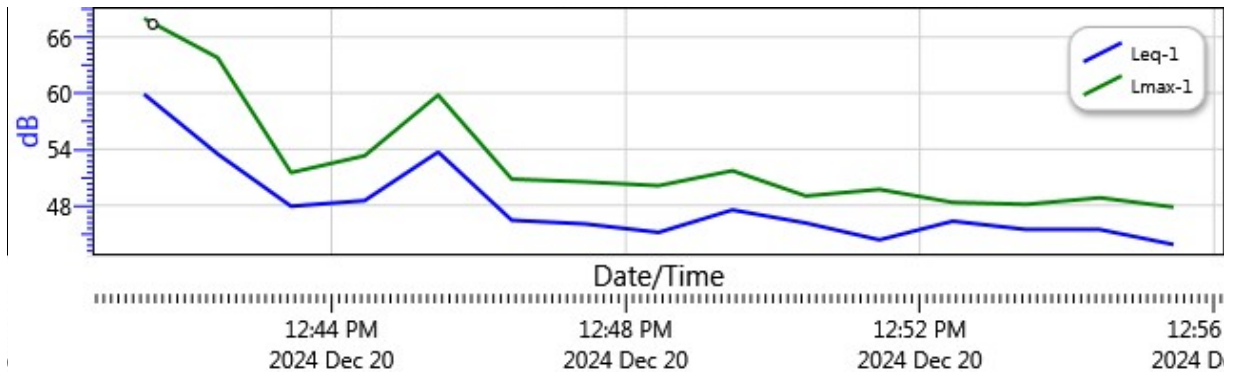
Exceedance Chart

S004_BLH080004_20122024_140815: Exceedance Chart



Logged Data Chart

S004_BLH080004_20122024_140815: Logged Data Chart





Noise Measurement Report Form - Part A

Date: 12/20/24 Day of Week: Friday Time: 1150 Project Number: 7307

Monitoring Segment / Area: 3 Monitoring Site Address: ~~18016~~ Lemon St

Measurement Taken By: Amir Ayati of UltraSystems Environmental

Average Wind Speed: 1.8 mph [km/hr] Compass Heading (meter ⊥ to source) 245° SW

Temp: 67.8 °F Relative Humidity: 67.4% Compass Heading (into wind) 209° SW

Cloud Cover Class (1 = heavy overcast, 2 = lightly overcast, 3 = sunny) 3

Approximate distance of sound level meter from receptor location: 27 feet

Approximate distance of sound level meter from construction site: _____

(Leave Blank for Baseline Ambient)

Receptor Land Use (Check One): Residential Institutional Comm./Ind. Recreational

Sound Level Meter: Make and Model: Quest SoundPro DL-1-1/3 Serial Number: BLH080004

Meter Setting: A-Weighted Sound Level (SLOW) A-Weighted Sound Level (FAST)

Measurement Start Time: 1150 Measurement End Time: 1205

Total Measurement Time: 15 min Session File Name (e.g., S012): S002

Check the measurement purpose:

Baseline condition Ongoing construction Caltrans Complaint response

Measurement Results

Measurement Type	Measured Levels (dB)	
Calibration	Pre: <u>114.0</u>	Post: <u>113.9</u>
L _{eq} (h)	Slow: <u>60.7</u>	Fast:
L _{max}	Slow: <u>69.7</u>	Fast:
L ₉₀	Slow: <u>52.2</u>	Fast:

Field Notes:

- Traffic noise along Lemon St and Talbert Ave.
- _____
- _____

Noise Monitor's Signature: [Signature] Date: 12/20/24




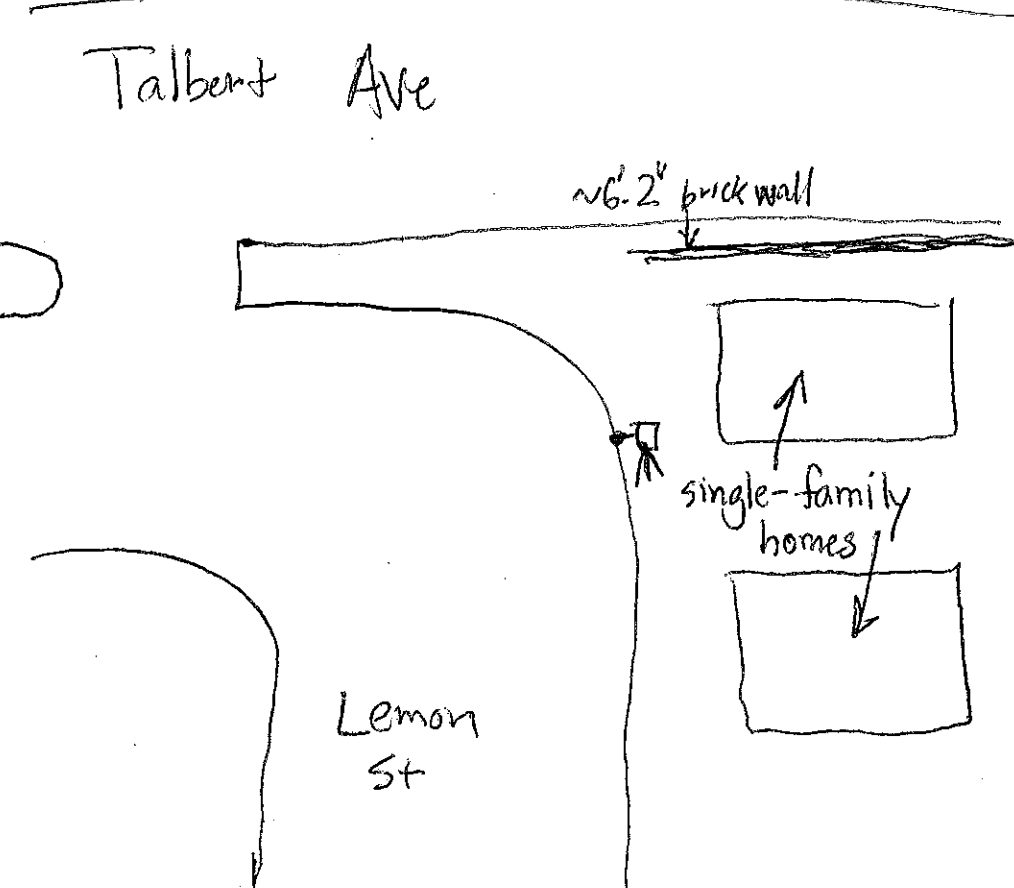
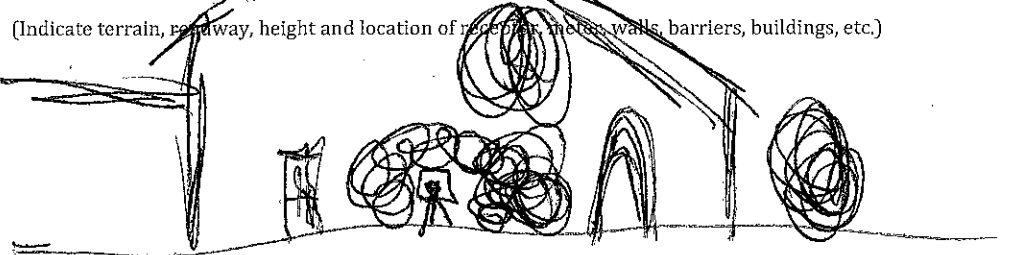
Noise Measurement Report Form - Part B

Date: 12/20/24 Day of Week: Friday Time: 1150 Project Number: 7307

Monitoring Segment / Area: 3 Monitoring Site Address: ~~18016~~ Lemon St

Site Map

18016

<p>Plan View</p>  <p>North Arrow (fill-in)</p>	<p>(Indicate site location, receptor location, meter location, distance in feet to landmarks, roadways, travel lane directions, geographical objects: trees, water, buildings, signs, store names, hydrants, power & telephone lines, manholes, etc.)</p>  <p>Talbert Ave</p> <p>6'-2" brick wall</p> <p>Lemon St</p> <p>single-family homes</p>
<p>Elevation View</p>	<p>(Indicate terrain, roadway, height and location of receptor, meter, walls, barriers, buildings, etc.)</p> 
<p>Latitude: <u>33.701499°</u> Longitude: <u>-117.958601°</u> Elevation: <u>26ft</u></p>	

Noise Monitor's Signature: [Signature] Date: 12/20/24

Session Report

12/20/2024

Information Panel

Name S002_BLH080004_20122024_140805
Start Time 12/20/2024 11:50:16 AM
Stop Time 12/20/2024 12:05:16 PM
Device Name BLH080004
Model Type SoundPro DL
Device Firmware Rev R.13J
Comments

Summary Data Panel

Description	Meter	Value	Description	Meter	Value
Leq	1	60.7 dB	L90	1	52.2 dB
Lmax	1	69.7 dB	Lmin	1	45.1 dB
Exchange Rate	1	3 dB	Weighting	1	A
Response	1	SLOW	Bandwidth	1	OFF
Exchange Rate	2	3 dB	Weighting	2	C
Response	2	FAST			

Statistics Table

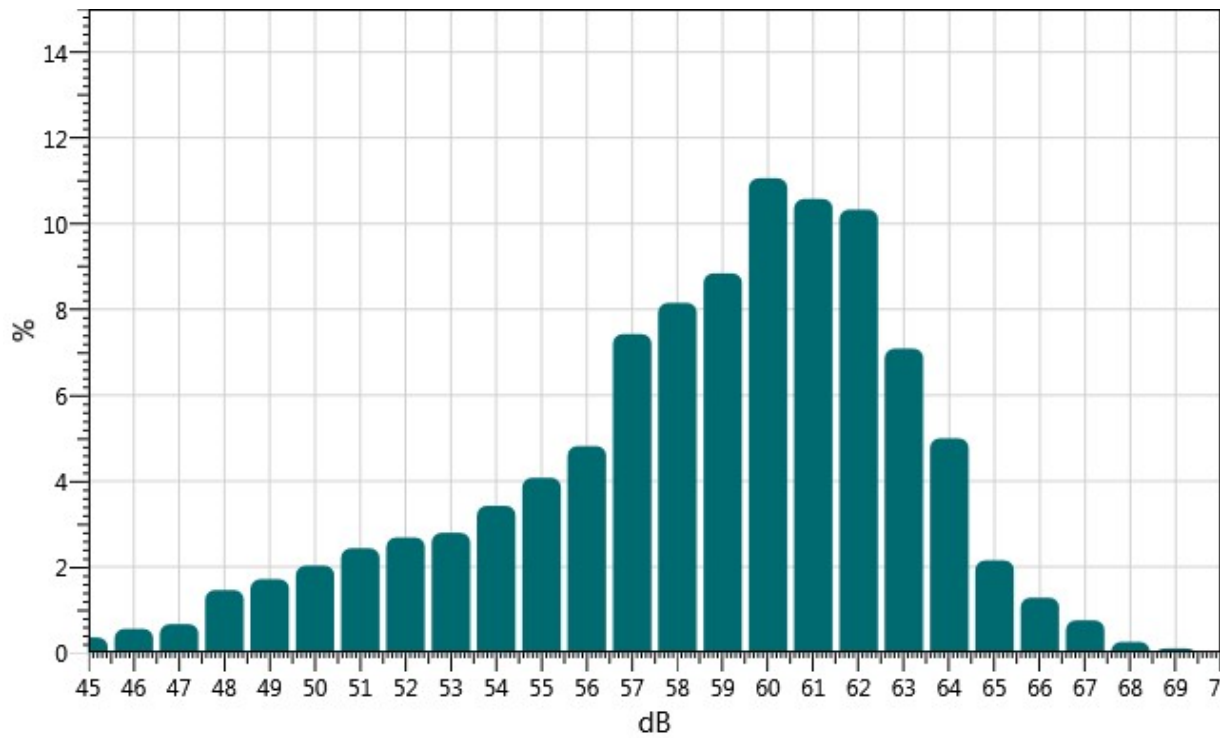
dB:	0.0	0.1	0.2	0.3	0.4	0.5	0.6	0.7	0.8	0.9	%
45:	0.00	0.01	0.03	0.02	0.06	0.04	0.06	0.03	0.06	0.04	0.35
46:	0.05	0.02	0.02	0.02	0.03	0.07	0.11	0.07	0.05	0.11	0.56
47:	0.05	0.06	0.07	0.07	0.03	0.07	0.08	0.07	0.08	0.09	0.66
48:	0.13	0.17	0.14	0.14	0.16	0.15	0.10	0.13	0.22	0.11	1.46
49:	0.11	0.14	0.20	0.19	0.15	0.15	0.16	0.14	0.22	0.26	1.71
50:	0.20	0.17	0.12	0.17	0.19	0.20	0.18	0.23	0.30	0.26	2.03
51:	0.27	0.30	0.14	0.25	0.31	0.25	0.19	0.24	0.22	0.26	2.43
52:	0.22	0.20	0.21	0.20	0.24	0.30	0.25	0.37	0.37	0.34	2.69
53:	0.28	0.29	0.28	0.25	0.28	0.23	0.30	0.31	0.29	0.30	2.79
54:	0.31	0.40	0.27	0.32	0.36	0.33	0.31	0.31	0.41	0.40	3.42
55:	0.37	0.31	0.37	0.47	0.49	0.43	0.47	0.42	0.35	0.41	4.08
56:	0.42	0.48	0.44	0.54	0.50	0.51	0.43	0.49	0.52	0.48	4.81
57:	0.54	0.62	0.47	0.63	0.86	0.71	0.80	0.86	0.94	1.01	7.43



58:	0.78	0.79	0.76	0.73	0.79	0.91	1.03	0.96	0.69	0.73	8.15
59:	0.76	0.82	0.83	0.94	0.80	0.88	0.82	0.93	1.05	1.01	8.84
60:	1.02	1.19	0.71	1.30	1.10	1.29	1.22	1.16	1.04	1.02	11.06
61:	1.12	1.23	1.11	0.97	1.01	0.86	0.82	1.11	1.21	1.14	10.57
62:	0.84	0.86	0.95	1.20	1.06	1.14	1.17	1.11	1.05	0.94	10.33
63:	1.09	1.05	0.68	0.88	0.64	0.64	0.53	0.47	0.52	0.58	7.09
64:	0.62	0.65	0.54	0.39	0.44	0.51	0.48	0.35	0.50	0.52	5.00
65:	0.39	0.35	0.26	0.24	0.18	0.14	0.12	0.14	0.18	0.15	2.15
66:	0.15	0.15	0.08	0.10	0.12	0.15	0.16	0.11	0.13	0.12	1.28
67:	0.08	0.08	0.08	0.09	0.09	0.08	0.08	0.05	0.07	0.05	0.75
68:	0.07	0.06	0.05	0.01	0.02	0.02	0.01	0.01	0.00	0.01	0.25
69:	0.01	0.01	0.01	0.01	0.01	0.01	0.03	0.03	0.00	0.00	0.10

Statistics Chart

S002_BLH080004_20122024_140805: Statistics Chart



Exceedance Table

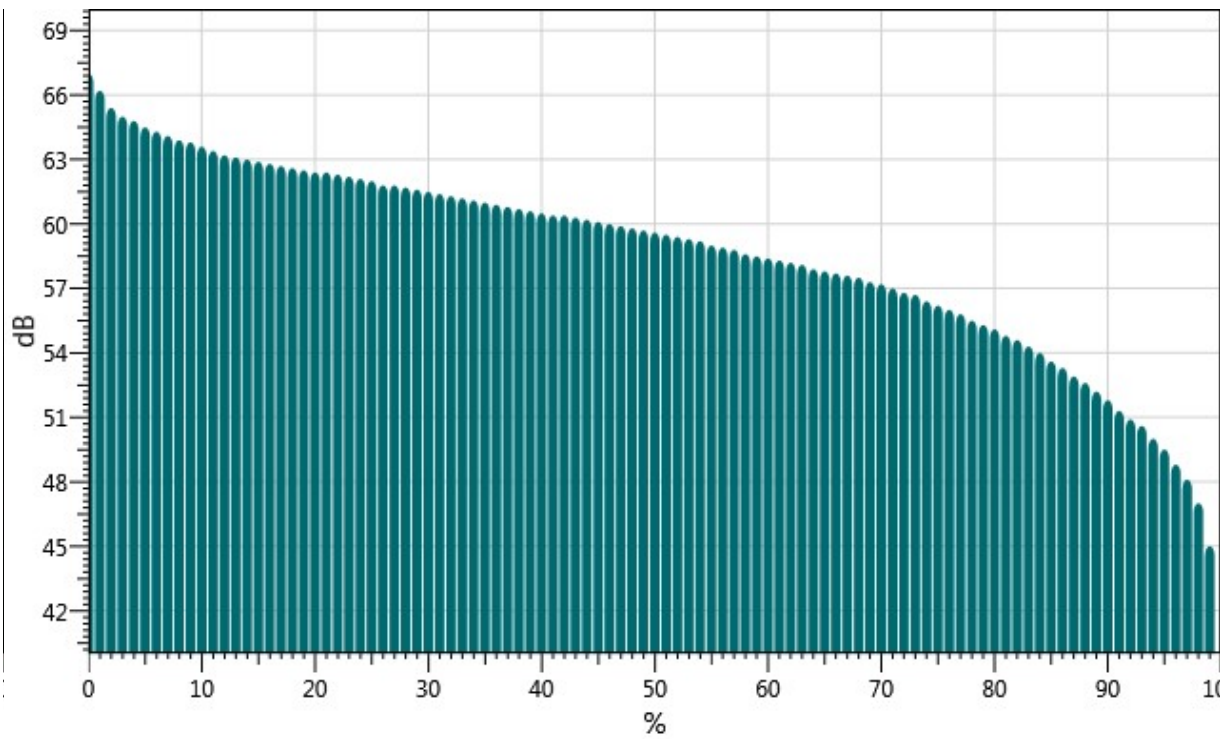
	0%	1%	2%	3%	4%	5%	6%	7%	8%	9%
0%:		67.0	66.2	65.4	65.0	64.8	64.5	64.3	64.1	63.9
10%:	63.8	63.6	63.4	63.2	63.1	63.0	62.9	62.8	62.7	62.6
20%:	62.5	62.4	62.4	62.3	62.2	62.1	62.0	61.8	61.8	61.7



30%:	61.6	61.5	61.4	61.3	61.2	61.1	61.0	60.9	60.8	60.7
40%:	60.6	60.5	60.4	60.4	60.3	60.2	60.1	60.0	59.9	59.8
50%:	59.7	59.6	59.5	59.4	59.3	59.2	59.0	58.9	58.8	58.6
60%:	58.5	58.4	58.3	58.2	58.1	57.9	57.8	57.7	57.6	57.5
70%:	57.3	57.2	57.0	56.8	56.7	56.4	56.2	56.0	55.8	55.5
80%:	55.3	55.1	54.8	54.6	54.3	54.0	53.6	53.3	52.9	52.6
90%:	52.2	51.8	51.3	50.9	50.6	50.0	49.5	48.8	48.1	47.0
100%:	45.0									

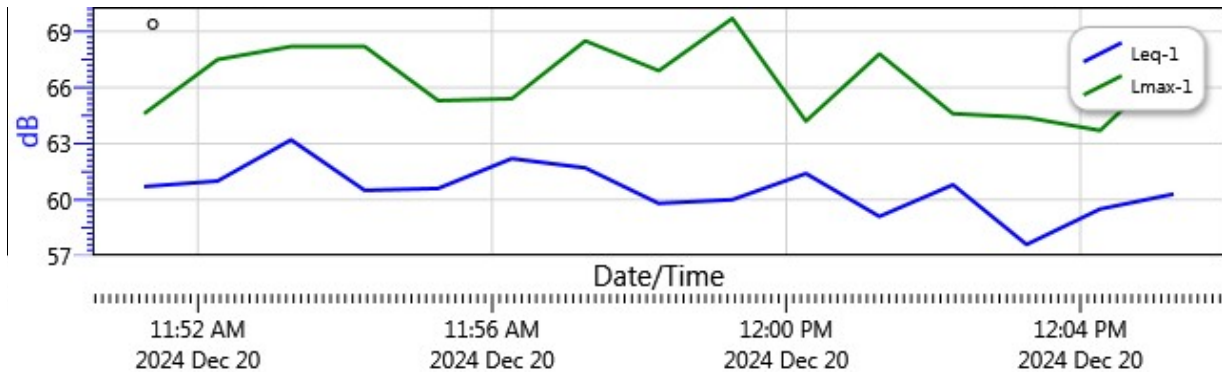
Exceedance Chart

S002_BLH080004_20122024_140805: Exceedance Chart



Logged Data Chart

S002_BLH080004_20122024_140805: Logged Data Chart





Noise Measurement Report Form - Part A

Date: 12/20/24 Day of Week: Friday Time: 1304 Project Number: 7307
 Monitoring Segment / Area: 4 Monitoring Site Address: 9900 Talbert Ave
 Measurement Taken By: Amir Ayari of UltraSystems Environmental
 Average Wind Speed: 3.6 mph [km/hr] Compass Heading (meter ⊥ to source) 275°W
 Temp: 62.2 °F Relative Humidity: 72.4 % Compass Heading (into wind) 32°NE
 Cloud Cover Class (1 = heavy overcast, 2 = lightly overcast, 3 = sunny) 3
 Approximate distance of sound level meter from receptor location: 26 feet
 Approximate distance of sound level meter from construction site: _____
 (Leave Blank for Baseline Ambient)

Receptor Land Use (Check One): Residential Institutional Comm./Ind. Recreational

Sound Level Meter: Make and Model: Quest SoundPro DL-1-1/3 Serial Number: BLH080004

Meter Setting: A-Weighted Sound Level (SLOW) A-Weighted Sound Level (FAST)

Measurement Start Time: 1304 Measurement End Time: 1309

Total Measurement Time: 15 min Session File Name (e.g., S012): S005

Check the measurement purpose:

Baseline condition Ongoing construction Caltrans Complaint response

Measurement Results

Measurement Type	Measured Levels (dB)	
Calibration	Pre: <u>114.0</u>	Post: <u>114.0</u>
L _{eq} (h)	Slow: <u>55.0</u>	Fast:
L _{max}	Slow: <u>75.5</u>	Fast:
L ₉₀	Slow: <u>49.6</u>	Fast:

Field Notes:

- Traffic noise in parking lot, Talbert Ave, and Foster St
- _____
- _____


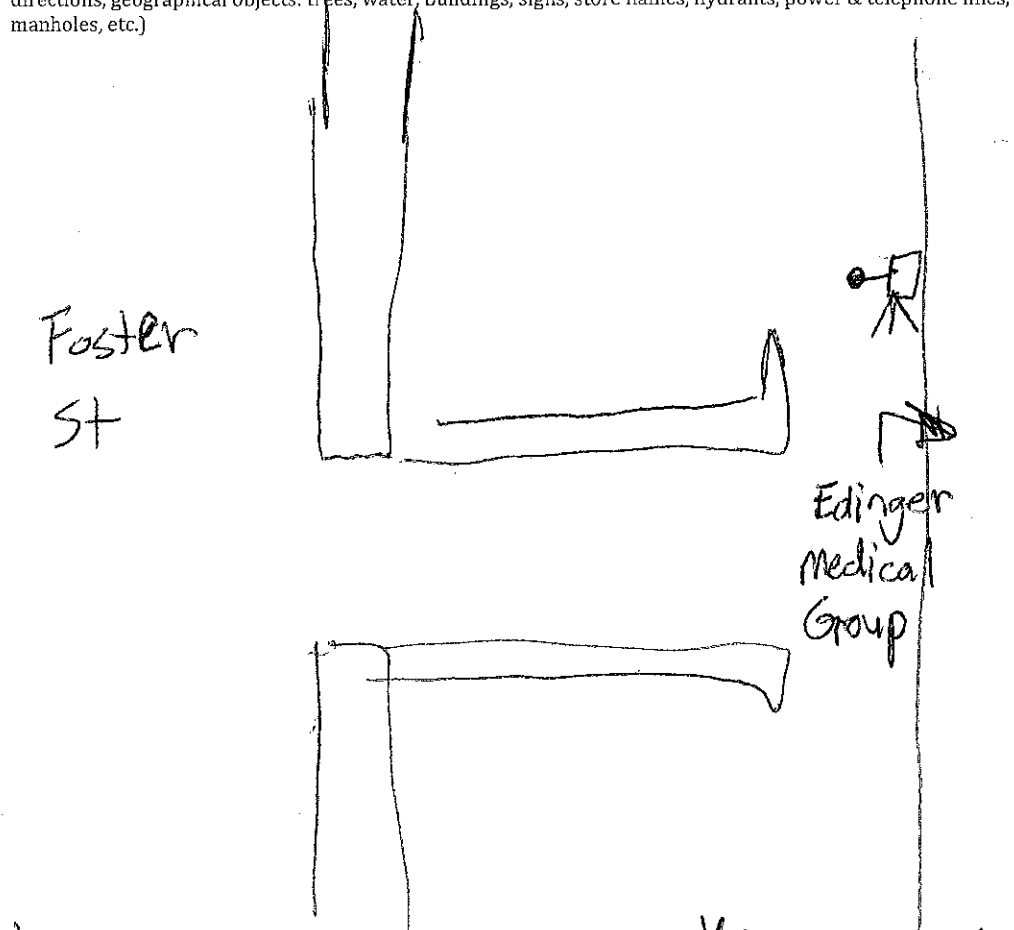
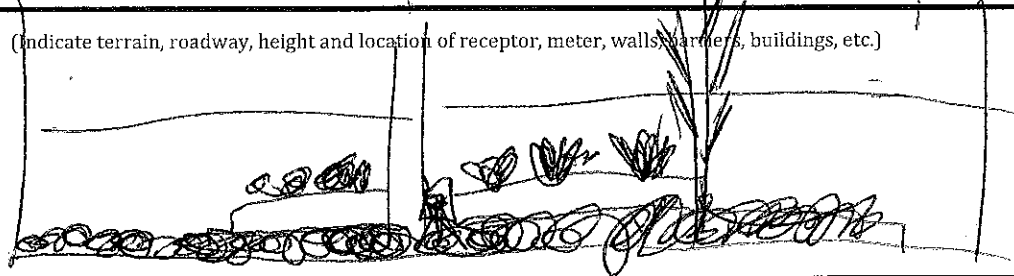
Noise Monitor's Signature: [Signature] Date: 12/20/24



Noise Measurement Report Form - Part B

Date: 12/20/24 Day of Week: Friday Time: 1304 Project Number: 1307
Monitoring Segment / Area: 4 Monitoring Site Address: 4900 Talbert Ave

Site Map

<p>Plan View</p>  <p>North Arrow (fill-in)</p>	<p>(Indicate site location, receptor location, meter location, distance in feet to landmarks, roadways, travel lane directions, geographical objects: trees, water, buildings, signs, store names, hydrants, power & telephone lines, manholes, etc.)</p>  <p>Foster St</p> <p>Edinger Medical Group</p>	
<p>Elevation View</p>	<p>(Indicate terrain, roadway, height and location of receptor, meter, walls, barriers, buildings, etc.)</p> 	
<p>Latitude: <u>33.701072°</u></p>	<p>Longitude: <u>-117.956548°</u></p>	<p>Elevation: <u>26 ft</u></p>

Noise Monitor's Signature: [Signature] Date: 12/20/24

Session Report

12/20/2024

Information Panel

Name S005_BLH080004_20122024_140823
Start Time 12/20/2024 1:04:25 PM
Stop Time 12/20/2024 1:19:25 PM
Device Name BLH080004
Model Type SoundPro DL
Device Firmware Rev R.13J
Comments

Summary Data Panel

Description	Meter	Value	Description	Meter	Value
Leq	1	55 dB	L90	1	49.6 dB
Lmax	1	75.5 dB	Lmin	1	46 dB
Exchange Rate	1	3 dB	Weighting	1	A
Response	1	SLOW	Bandwidth	1	OFF
Exchange Rate	2	3 dB	Weighting	2	C
Response	2	FAST			

Statistics Table

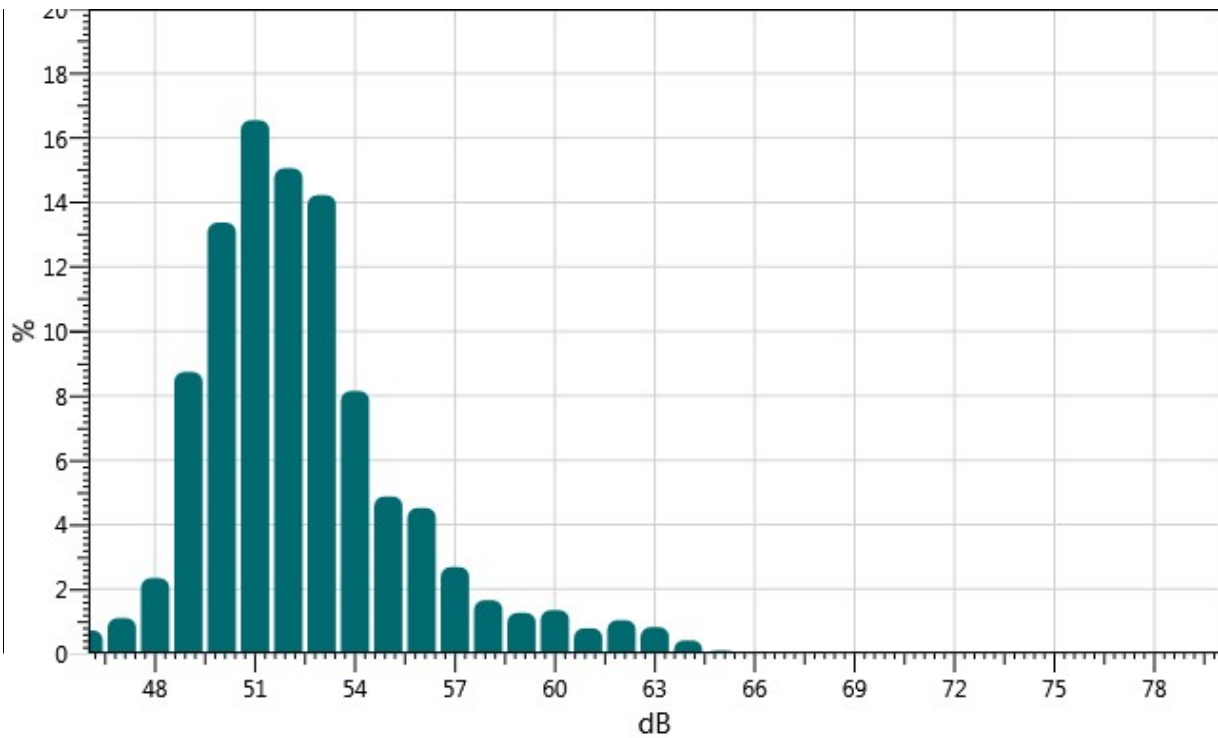
dB:	0.0	0.1	0.2	0.3	0.4	0.5	0.6	0.7	0.8	0.9	%
46:	0.00	0.05	0.15	0.10	0.08	0.10	0.07	0.08	0.03	0.06	0.72
47:	0.04	0.11	0.06	0.05	0.04	0.07	0.12	0.21	0.19	0.22	1.10
48:	0.21	0.13	0.06	0.13	0.21	0.21	0.26	0.34	0.41	0.38	2.34
49:	0.70	0.64	0.87	0.61	0.69	0.97	1.15	1.09	0.93	1.10	8.74
50:	1.00	1.06	1.14	1.11	1.50	1.69	1.18	1.52	1.58	1.61	13.38
51:	2.31	1.87	1.20	1.60	1.66	1.58	1.47	1.55	1.64	1.68	16.55
52:	1.84	1.38	1.16	1.41	1.30	1.68	1.77	1.67	1.37	1.48	15.06
53:	1.56	1.24	1.42	1.83	1.48	1.20	1.31	1.36	1.49	1.34	14.22
54:	0.93	1.11	0.65	0.95	0.74	0.75	0.85	0.78	0.72	0.64	8.15
55:	0.52	0.48	0.52	0.47	0.42	0.50	0.53	0.57	0.42	0.43	4.87
56:	0.40	0.47	0.51	0.53	0.47	0.49	0.46	0.49	0.37	0.34	4.52
57:	0.40	0.47	0.26	0.34	0.20	0.27	0.18	0.19	0.20	0.18	2.69
58:	0.18	0.18	0.18	0.14	0.16	0.17	0.21	0.16	0.13	0.14	1.65



59:	0.16	0.15	0.13	0.15	0.14	0.10	0.12	0.10	0.10	0.13	1.26
60:	0.15	0.14	0.10	0.14	0.14	0.17	0.14	0.17	0.10	0.10	1.35
61:	0.10	0.11	0.11	0.06	0.07	0.06	0.06	0.08	0.07	0.06	0.79
62:	0.07	0.09	0.08	0.07	0.10	0.11	0.10	0.11	0.15	0.17	1.04
63:	0.13	0.11	0.12	0.10	0.09	0.07	0.05	0.05	0.06	0.05	0.82
64:	0.06	0.06	0.09	0.03	0.02	0.02	0.03	0.03	0.04	0.02	0.41
65:	0.01	0.03	0.03	0.00	0.00	0.00	0.00	0.00	0.00	0.00	0.09
66:	0.00	0.00	0.00	0.00	0.00	0.00	0.00	0.00	0.00	0.00	0.03
67:	0.00	0.00	0.00	0.00	0.00	0.00	0.00	0.00	0.00	0.00	0.02
68:	0.00	0.00	0.00	0.00	0.00	0.00	0.00	0.00	0.00	0.00	0.03
69:	0.00	0.00	0.00	0.00	0.00	0.00	0.00	0.00	0.00	0.00	0.03
70:	0.00	0.00	0.00	0.00	0.00	0.00	0.00	0.00	0.00	0.00	0.03
71:	0.00	0.00	0.00	0.00	0.00	0.00	0.00	0.00	0.00	0.00	0.03
72:	0.00	0.00	0.00	0.00	0.00	0.00	0.00	0.00	0.00	0.00	0.03
73:	0.00	0.00	0.00	0.00	0.00	0.00	0.00	0.00	0.00	0.00	0.03
74:	0.00	0.00	0.00	0.00	0.00	0.00	0.00	0.00	0.00	0.00	0.03
75:	0.00	0.00	0.00	0.00	0.01	0.00	0.00	0.00	0.00	0.00	0.02

Statistics Chart

S005_BLH080004_20122024_140823: Statistics Chart

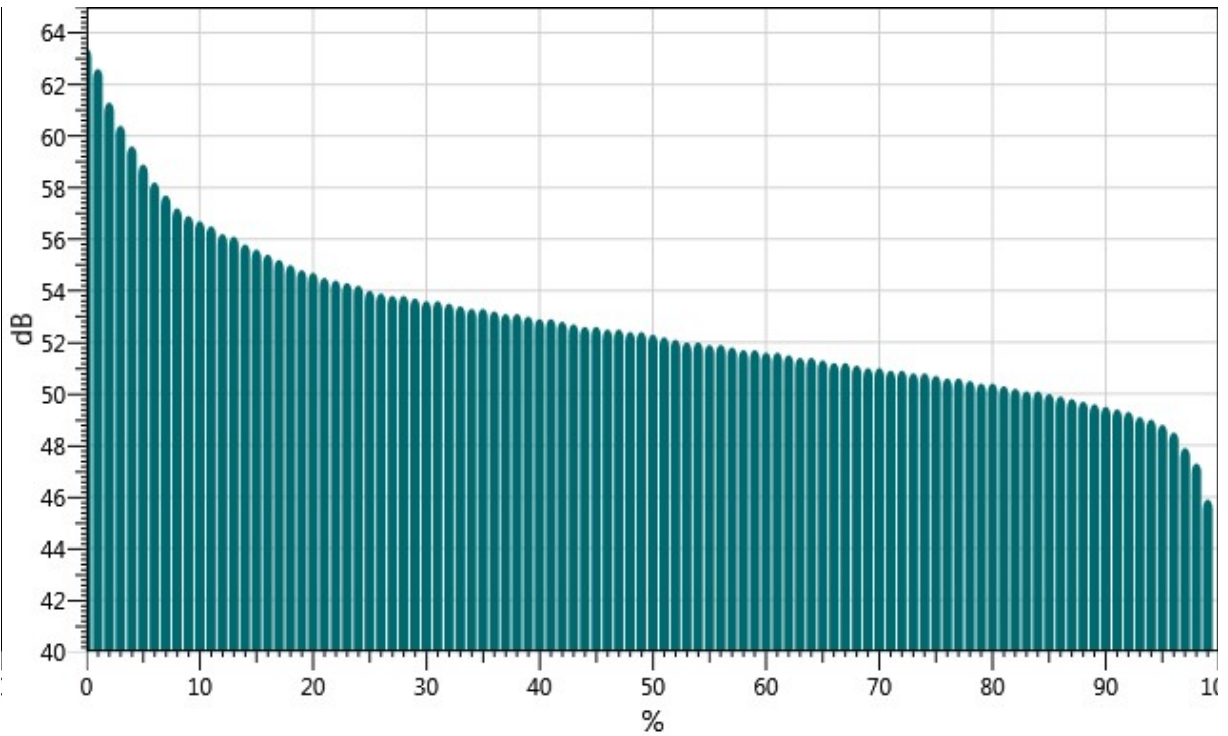


Exceedance Table

	0%	1%	2%	3%	4%	5%	6%	%7	%8	%9
0%:		63.4	62.6	61.3	60.4	59.6	58.9	58.2	57.7	57.2
10%:	56.9	56.7	56.5	56.2	56.1	55.8	55.6	55.4	55.2	55.0
20%:	54.8	54.7	54.5	54.4	54.3	54.2	54.0	53.9	53.8	53.8
30%:	53.7	53.6	53.6	53.5	53.4	53.3	53.3	53.2	53.1	53.1
40%:	53.0	52.9	52.9	52.8	52.7	52.6	52.6	52.5	52.5	52.4
50%:	52.4	52.3	52.2	52.1	52.0	52.0	51.9	51.9	51.8	51.7
60%:	51.7	51.6	51.6	51.5	51.4	51.4	51.3	51.2	51.2	51.1
70%:	51.0	51.0	50.9	50.9	50.8	50.8	50.7	50.6	50.6	50.5
80%:	50.4	50.4	50.3	50.2	50.1	50.1	50.0	49.9	49.8	49.7
90%:	49.6	49.5	49.4	49.3	49.1	49.0	48.8	48.5	47.9	47.3
100%:	45.9									

Exceedance Chart

S005_BLH080004_20122024_140823: Exceedance Chart



Logged Data Chart

S005_BLH080004_20122024_140823: Logged Data Chart

