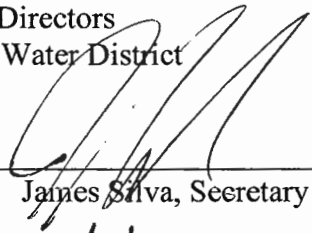


**MITIGATED NEGATIVE DECLARATION
OF
BOARD OF DIRECTORS
OF THE
ST. JOHNS WATER DISTRICT**

**COUNTY CLERK
COUNTY OF TULARE**

The project hereafter described will, in our evaluation, have no significant effect on the environment and does not, therefore, require the filing of an Environmental Impact Report.

Board of Directors
St. Johns Water District

By: 
James Silva, Secretary

Dated: 3/4/26

Project Location:

St. Johns River, north of the City of Visalia, between Road 122 and Pratt Road.

See Figure 1, attached.

Brief description of project:

The Proposed Project consists of the construction of new recharge basins, a new concrete diversion weir and turnout structure in the St. Johns River to facilitate groundwater recharge in areas adjacent to the main channel. The Proposed Project also includes a discharge structure downstream that will enable the District to return unused surface water to the main channel for downstream purposes. Construction will include the clearing and site preparation, including excavation for the diversion weir, turnout and discharge structures, earthwork, backfill, compaction and surface restoration efforts to complete the recharge basins and new structures.

Reason(s) for mitigated negative declaration finding:

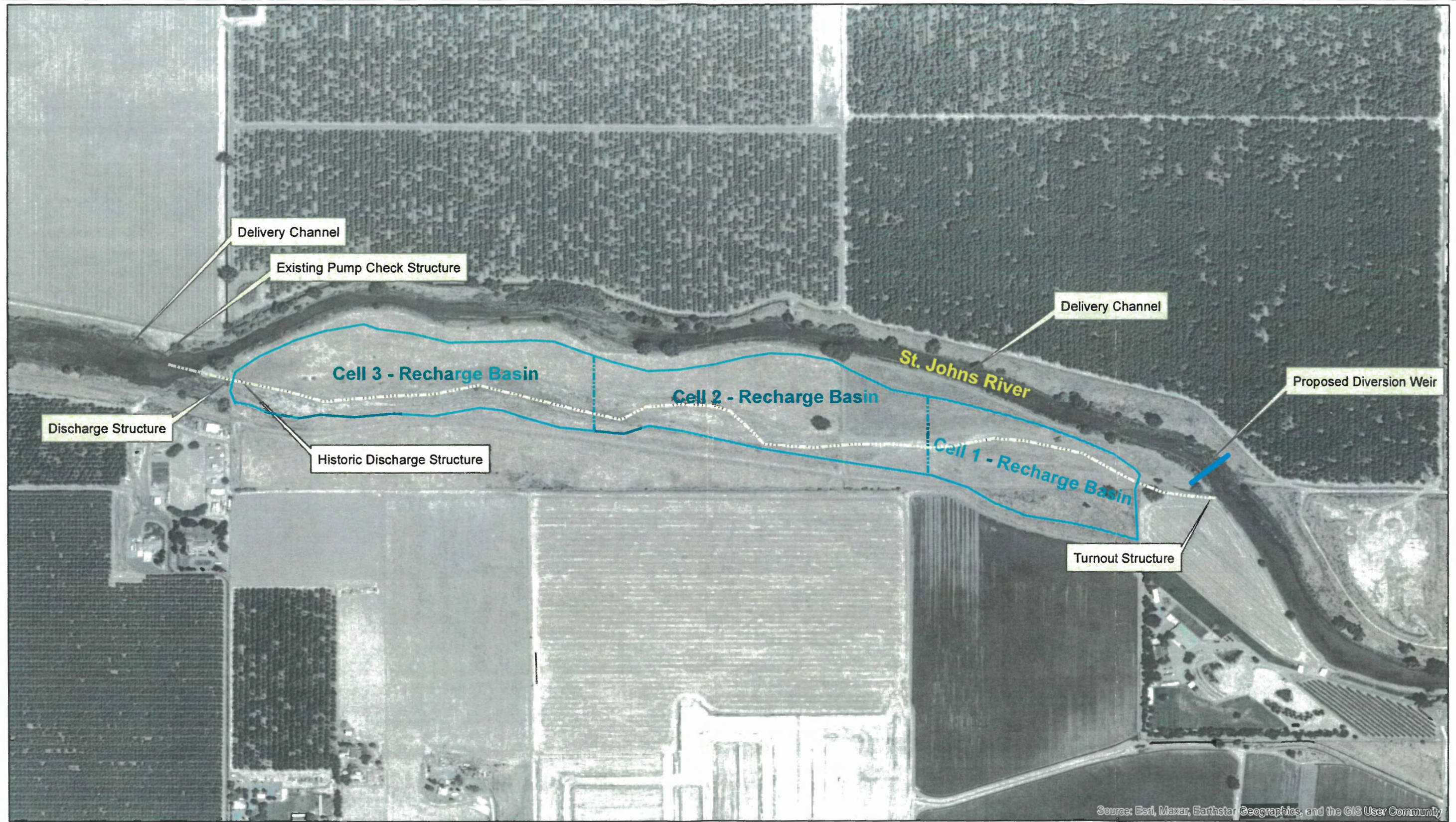
The Project will result in no adverse long-term environmental impacts. Short-term construction related potential impacts will be mitigated to a less than significant level by use of construction specifications requiring defined mitigation measures.

Initial study prepared by:

Dennis R. Keller, Consulting Civil Engineer for
St. Johns Water District

Initial study available at:

St. Johns Water District
15370 Avenue 256
Visalia, CA 93292



Source: Esri, Maxar, Earthstar Geographics, and the GIS User Community



SK Vanderstelt Recharge Basin Project
St. Johns Water District
In Conjunction with Modoc Ditch Company

