

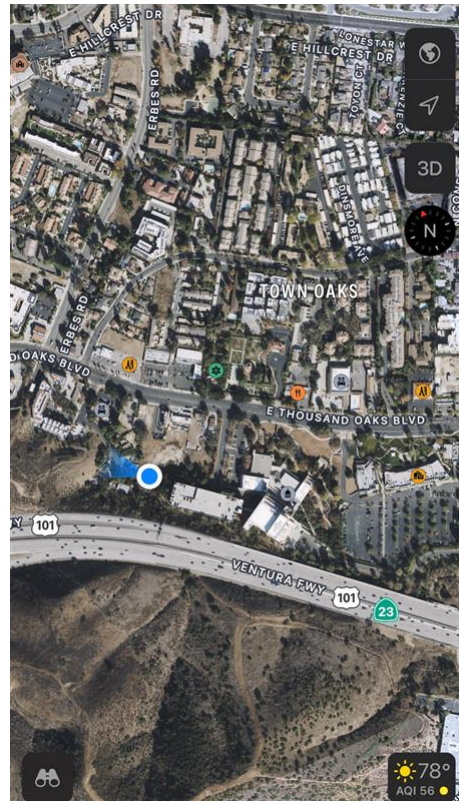
# Appendix M

## Noise Data

<b>Site Number:</b> NM-1		
<b>Recorded By:</b> Dennis Dinh, Oscar Escobar		
<b>Job Number:</b> 207756		
<b>Date:</b> 6/19/2025		
<b>Time:</b> 12:37 p.m.		
<b>Location:</b> In front of 1846 Oakwood Drive		
<b>Source of Ambient Noise:</b> Plane overhead and low vehicular noise from Thousand Oaks Boulevard		
Noise Data		
<b>L<sub>eq</sub> (dB)</b>	<b>L<sub>min</sub> (dB)</b>	<b>L<sub>max</sub> (dB)</b>
57.5	51.1	77.3

Equipment						
Category	Type	Vendor	Model	Serial No.	Cert. Date	Note
Sound	Sound Level Meter	Brüel & Kjær	2250	3011133	06/04/2023	
	Microphone	Brüel & Kjær	4189	3086765	06/04/2023	
	Preamp	Brüel & Kjær	ZC 0032	25380	06/04/2023	
	Calibrator	Brüel & Kjær	4231	2545667	06/04/2023	
Weather Data						
Est.	<b>Duration:</b> 10 minutes			<b>Sky:</b> Sunny		
	<b>Note:</b> dBA Offset = -0.04			<b>Sensor Height (ft):</b> 5 ft		
	<b>Wind Ave Speed (mph / m/s)</b>		<b>Temperature (degrees Fahrenheit)</b>		<b>Barometer Pressure (inches)</b>	
	9		78		29.82	

**Photo of Measurement Location**





2250

Instrument:		2250
Application:		BZ7225 Version 4.7.6
Start Time:		06/19/2025 12:37:47
End Time:		06/19/2025 12:47:47
Elapsed Time:		00:10:00
Bandwidth:		1/3-octave
Max Input Level:		142.21

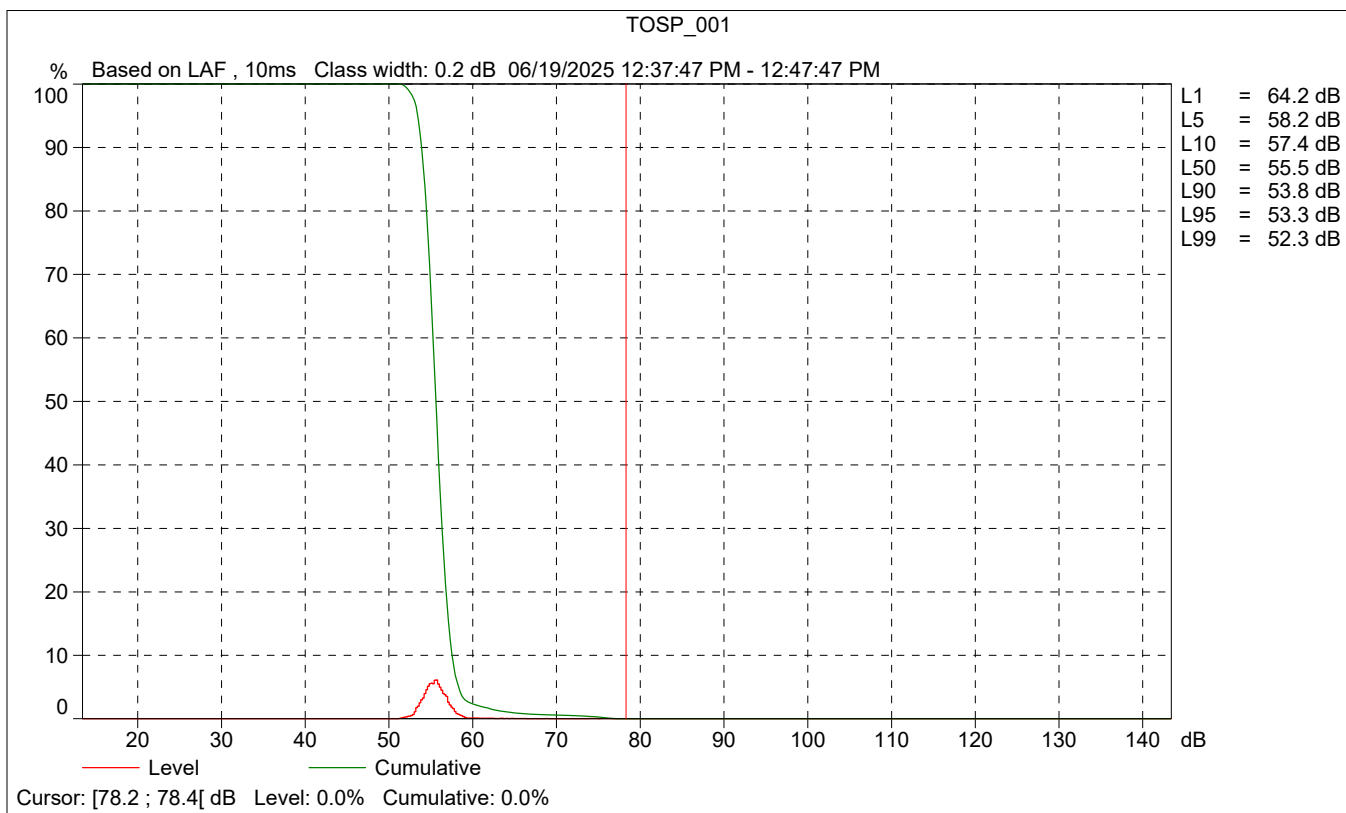
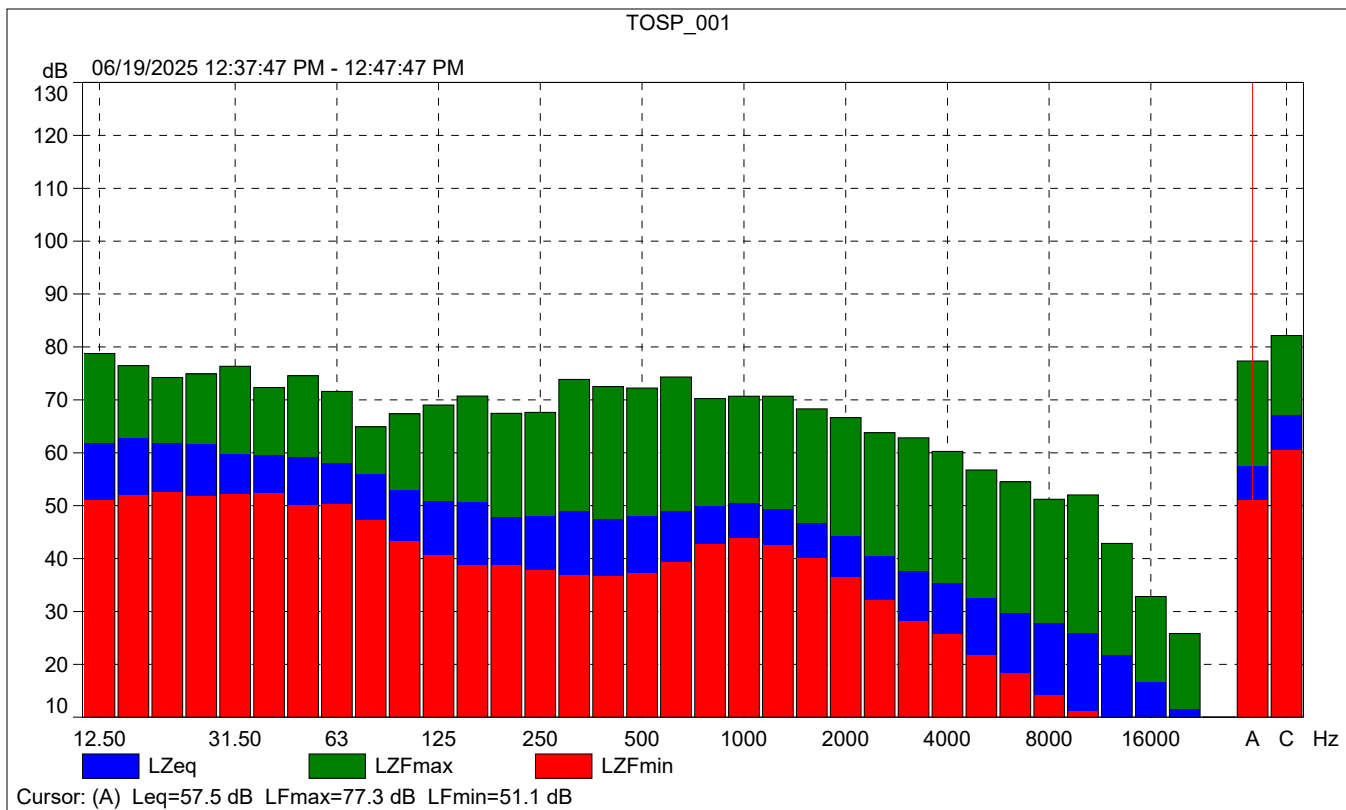
	Time	Frequency
Broadband (excl. Peak):	FSI	AC
Broadband Peak:		C
Spectrum:	FS	Z

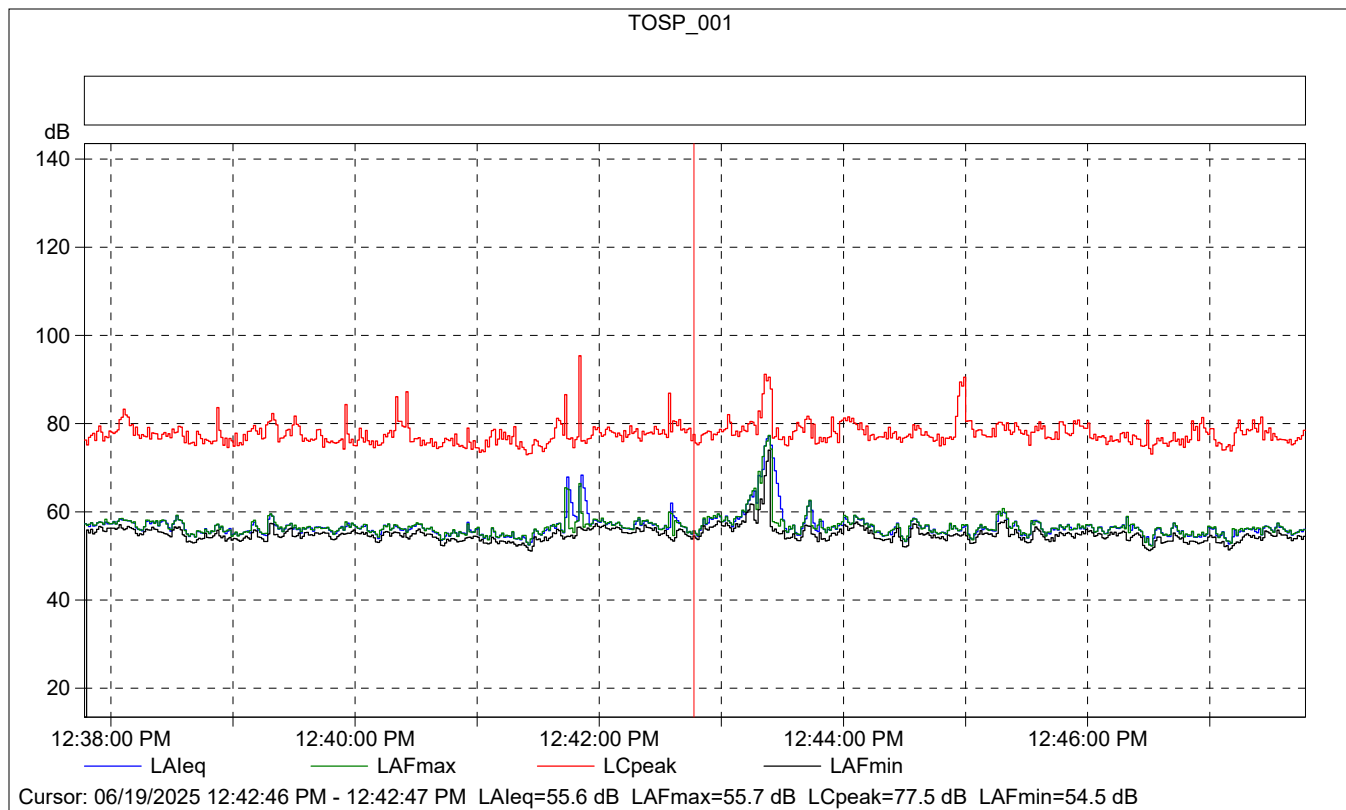
Instrument Serial Number:		3011133
Microphone Serial Number:		3086765
Input:		Top Socket
Windscreen Correction:		UA-1650
Sound Field Correction:		Free-field

Calibration Time:		06/19/2025 12:36:58
Calibration Type:		External reference
Sensitivity:		43.167807161808 mV/Pa

TOSP\_001

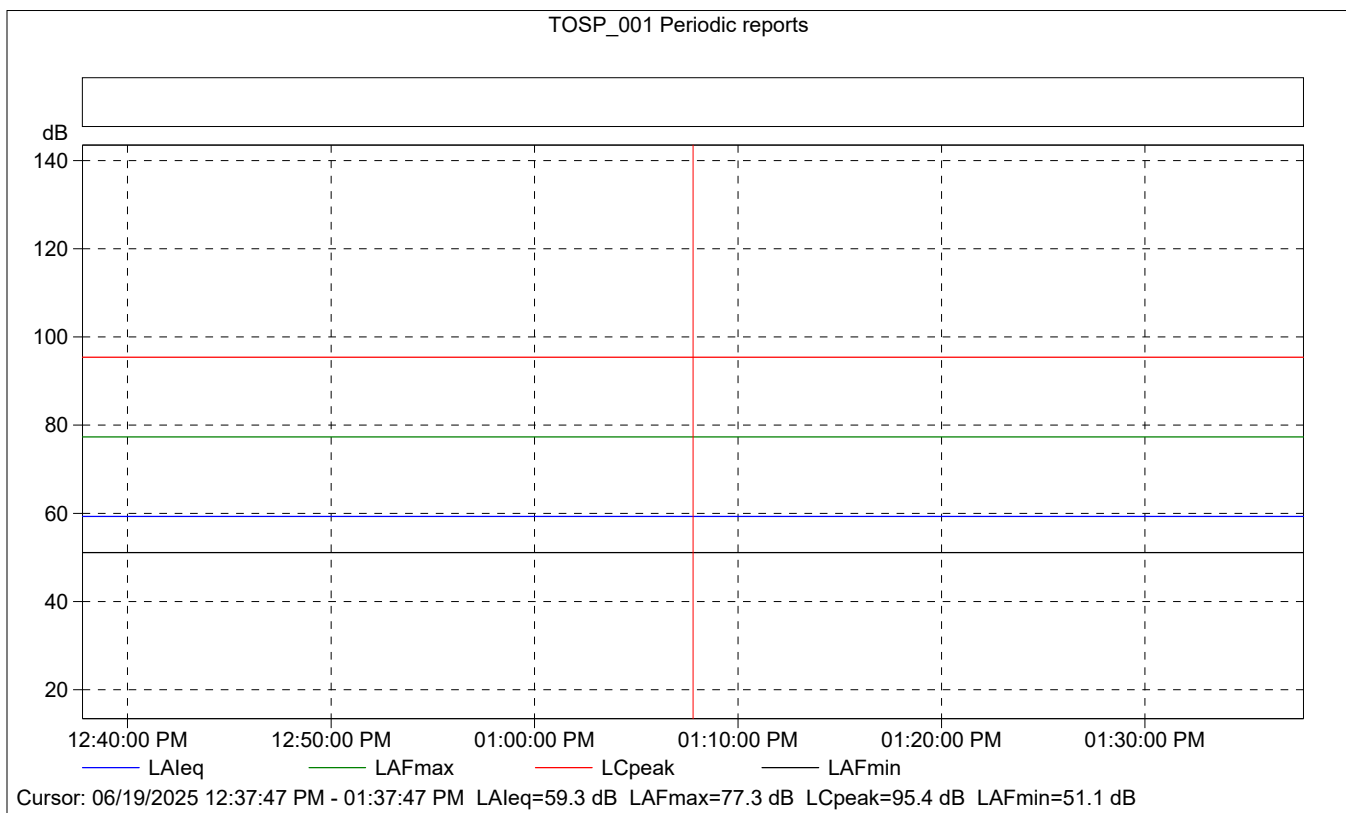
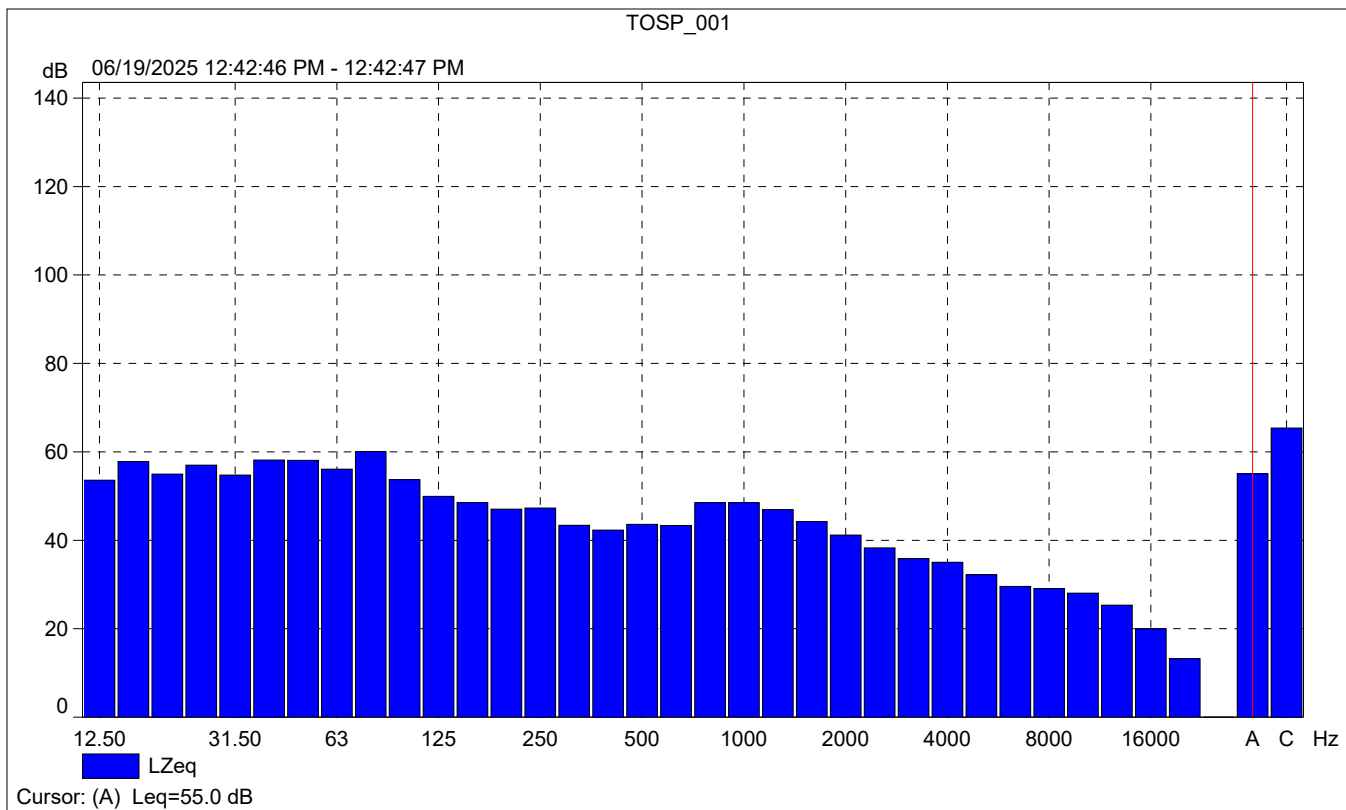
	Start time	End time	Elapsed time	Overload [%]	LAeq [dB]	LAFmax [dB]	LAFmin [dB]
Value				0.00	57.5	77.3	51.1
Time	12:37:47 PM	12:47:47 PM	0:10:00				
Date	06/19/2025	06/19/2025					





### TOSP\_001

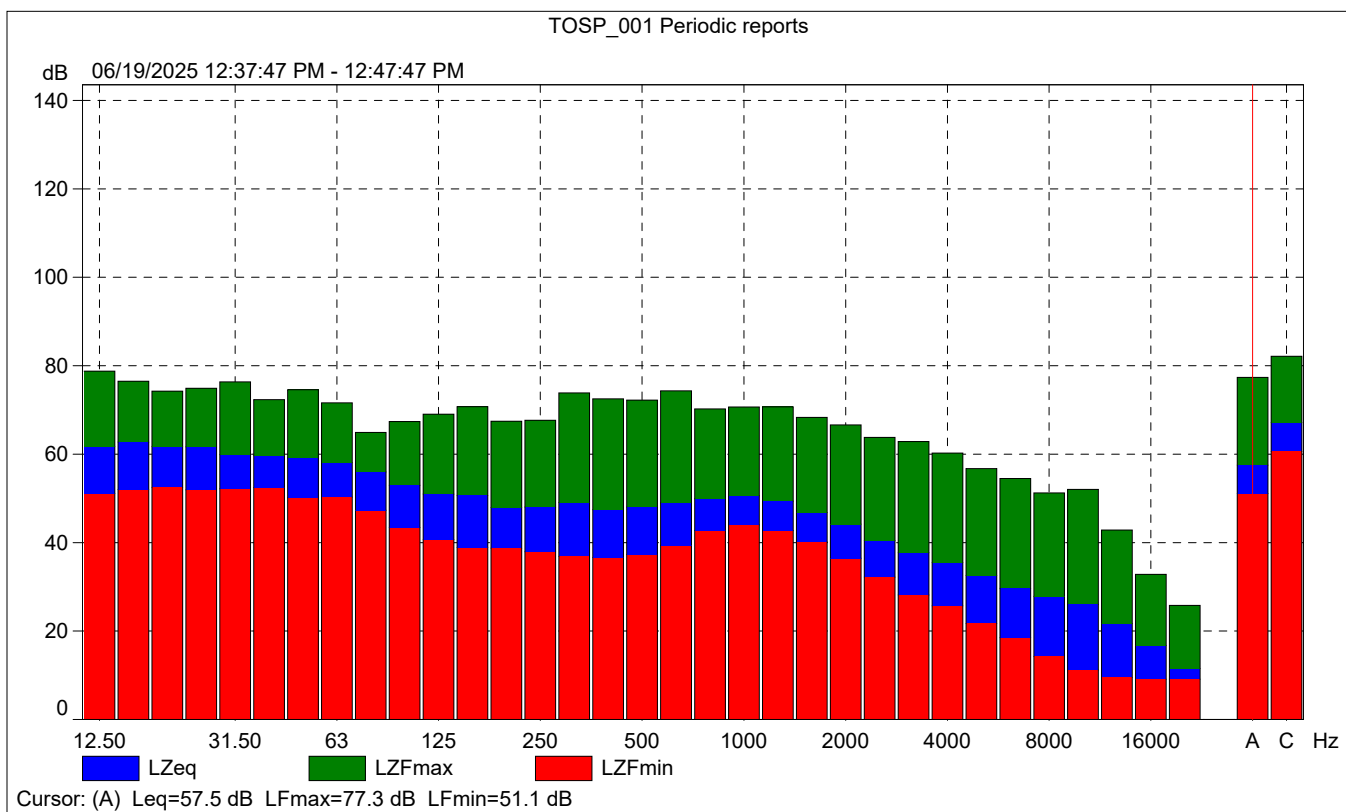
	Start time	Elapsed time	Overload [%]	LAeq [dB]	LAFmax [dB]	LAFmin [dB]
Value			0.00	55.6	55.7	54.5
Time	12:42:46 PM	0:00:01				
Date	06/19/2025					





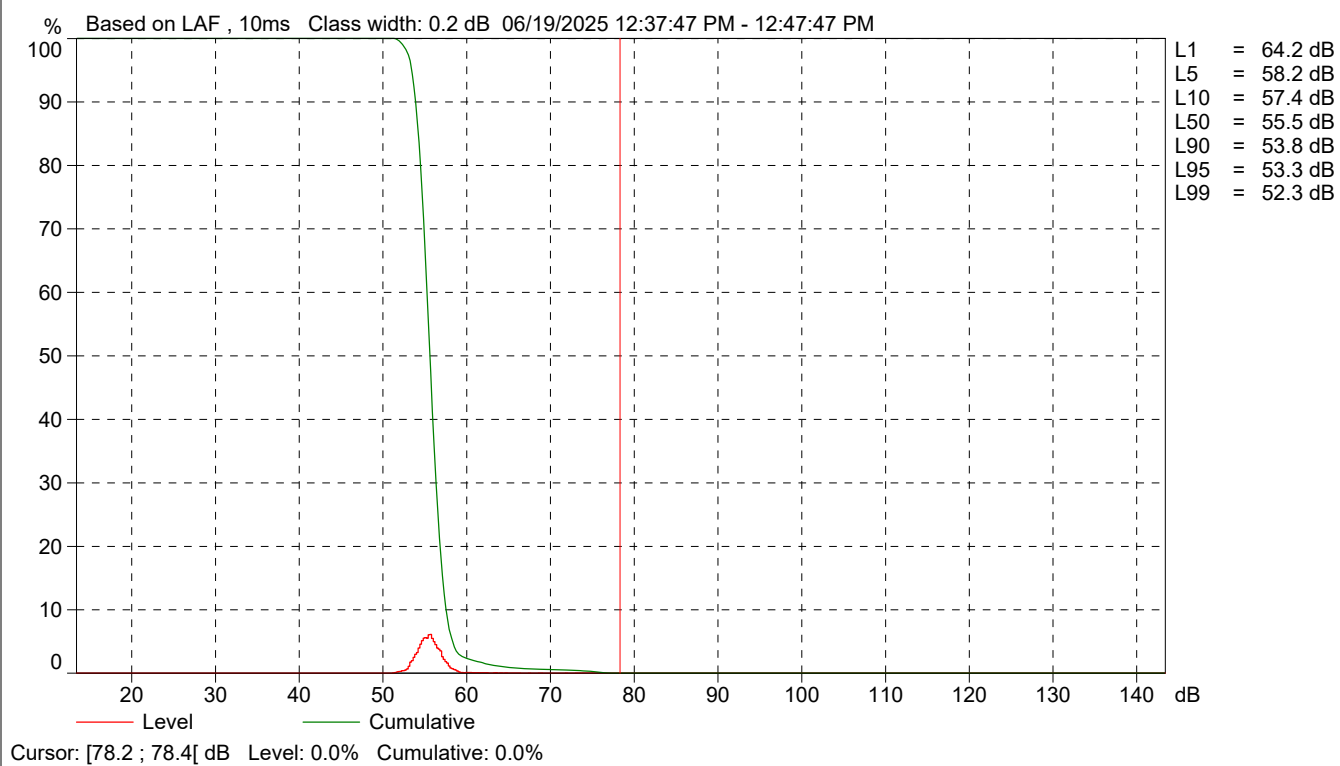
# TOSP\_001 Periodic reports

	Start time	Elapsed time	Overload [%]	LALeq [dB]	LAFmax [dB]	LAFmin [dB]
Value			0.00	59.3	77.3	51.1
Time	12:37:47 PM	0:10:00				
Date	06/19/2025					





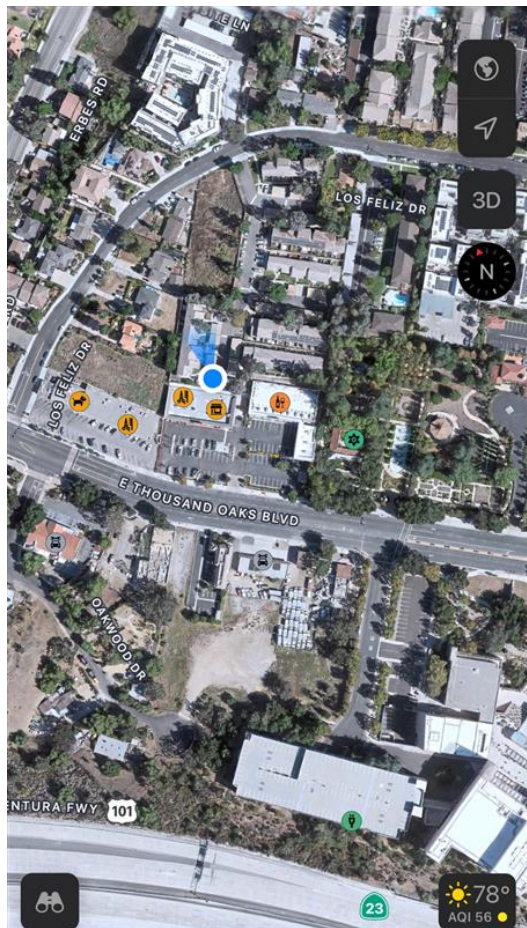
TOSP\_001 Periodic reports



<b>Site Number:</b> NM-2		
<b>Recorded By:</b> Dennis Dinh, Oscar Escobar		
<b>Job Number:</b> 207756		
<b>Date:</b> 6/19/2025		
<b>Time:</b> 12:53 p.m.		
<b>Location:</b> In front of a Leggett Court Apartment dwelling unit along the southern property line		
<b>Source of Ambient Noise:</b> Traffic Thousand Oaks Boulevard; pedestrians talking		
Noise Data		
<b>L<sub>eq</sub> (dB)</b>	<b>L<sub>min</sub> (dB)</b>	<b>L<sub>max</sub> (dB)</b>
58.9	50.2	77.5

Equipment						
Category	Type	Vendor	Model	Serial No.	Cert. Date	Note
Sound	Sound Level Meter	Brüel & Kjær	2250	3011133	06/04/2023	
	Microphone	Brüel & Kjær	4189	3086765	06/04/2023	
	Preamp	Brüel & Kjær	ZC 0032	25380	06/04/2023	
	Calibrator	Brüel & Kjær	4231	2545667	06/04/2023	
Weather Data						
Est.	<b>Duration:</b> 10 minutes			<b>Sky:</b> Sunny		
	<b>Note:</b> dBA Offset = -0.04			<b>Sensor Height (ft):</b> 5 ft		
	<b>Wind Ave Speed (mph / m/s)</b>		<b>Temperature (degrees Fahrenheit)</b>		<b>Barometer Pressure (inches)</b>	
	9		78		29.82	

**Photo of Measurement Location**





2250

Instrument:		2250
Application:		BZ7225 Version 4.7.6
Start Time:		06/19/2025 12:53:34
End Time:		06/19/2025 13:04:18
Elapsed Time:		00:10:00
Bandwidth:		1/3-octave
Max Input Level:		142.21

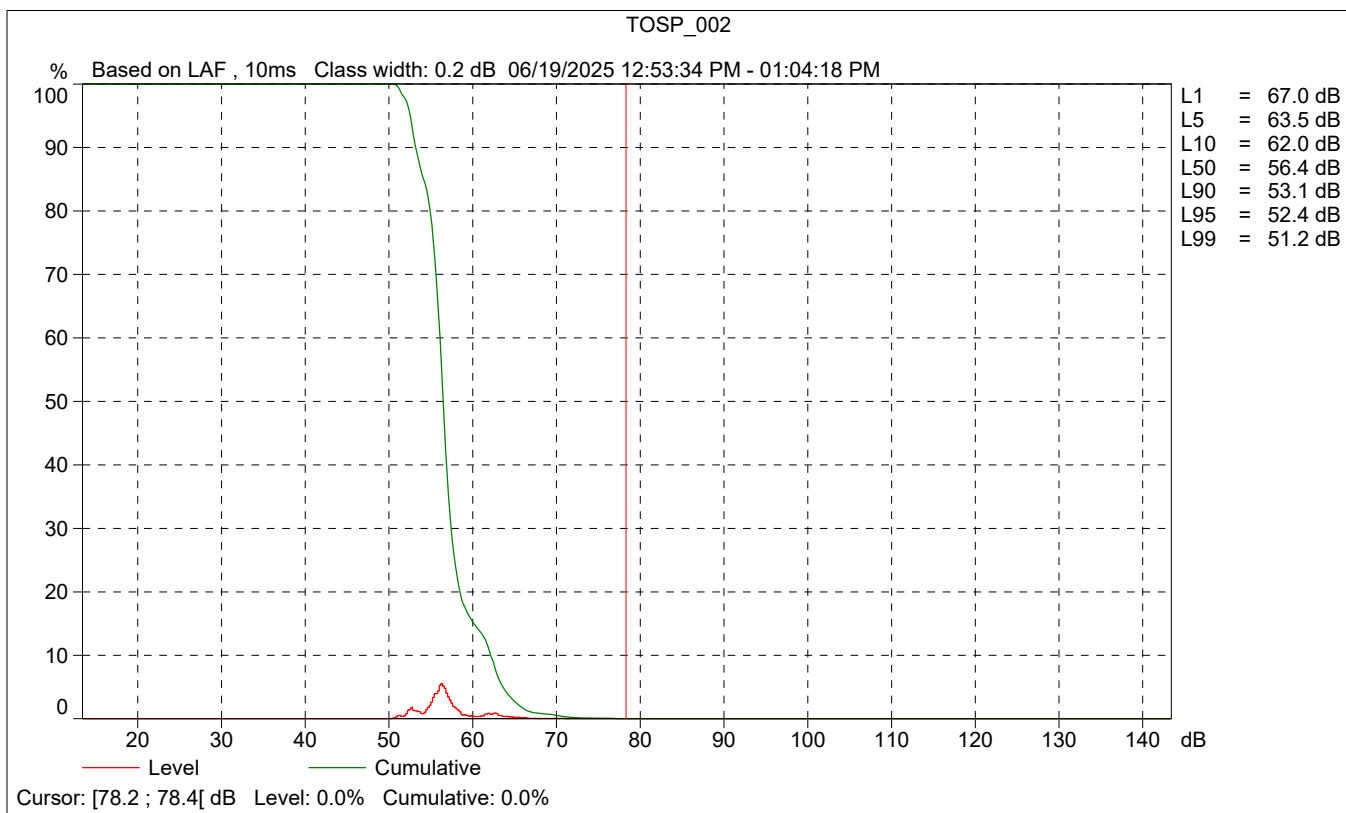
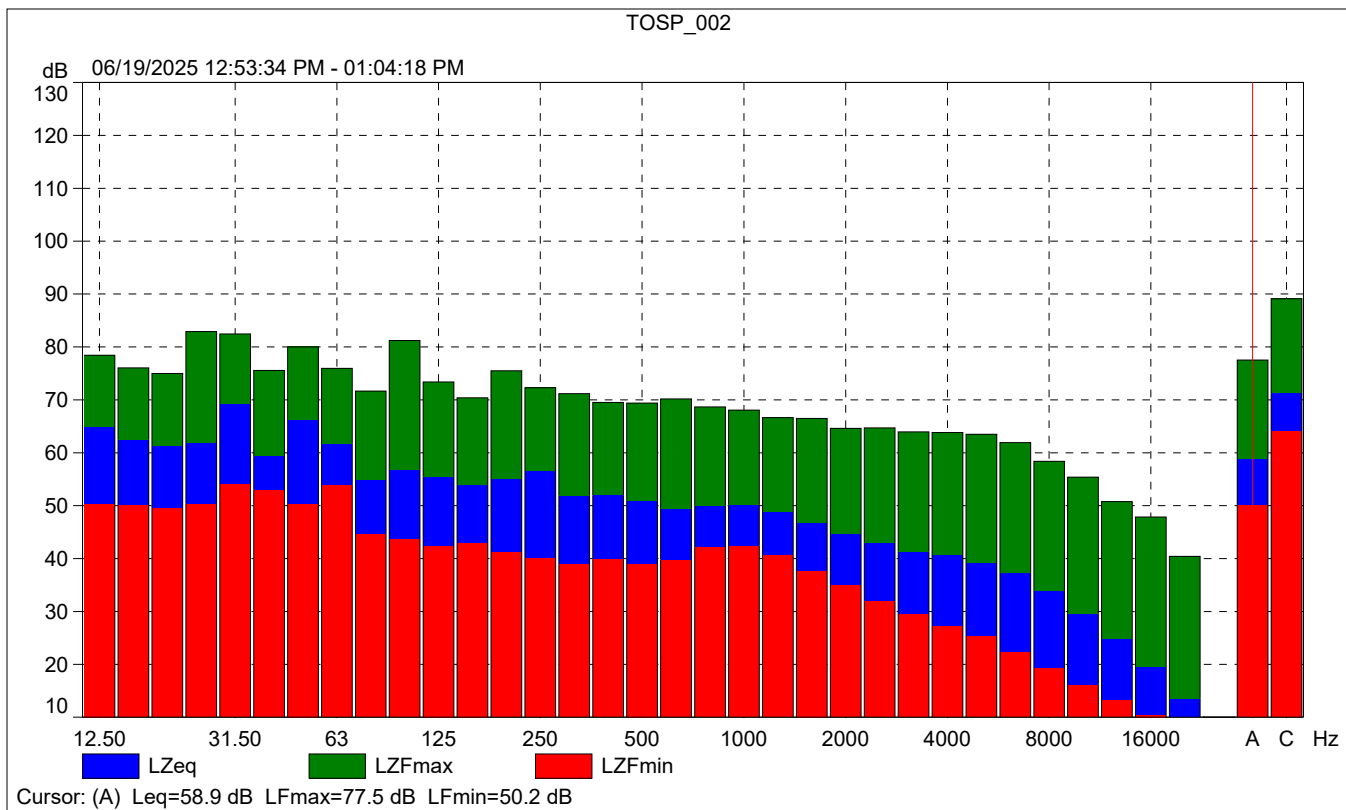
	Time	Frequency
Broadband (excl. Peak):	FSI	AC
Broadband Peak:		C
Spectrum:	FS	Z

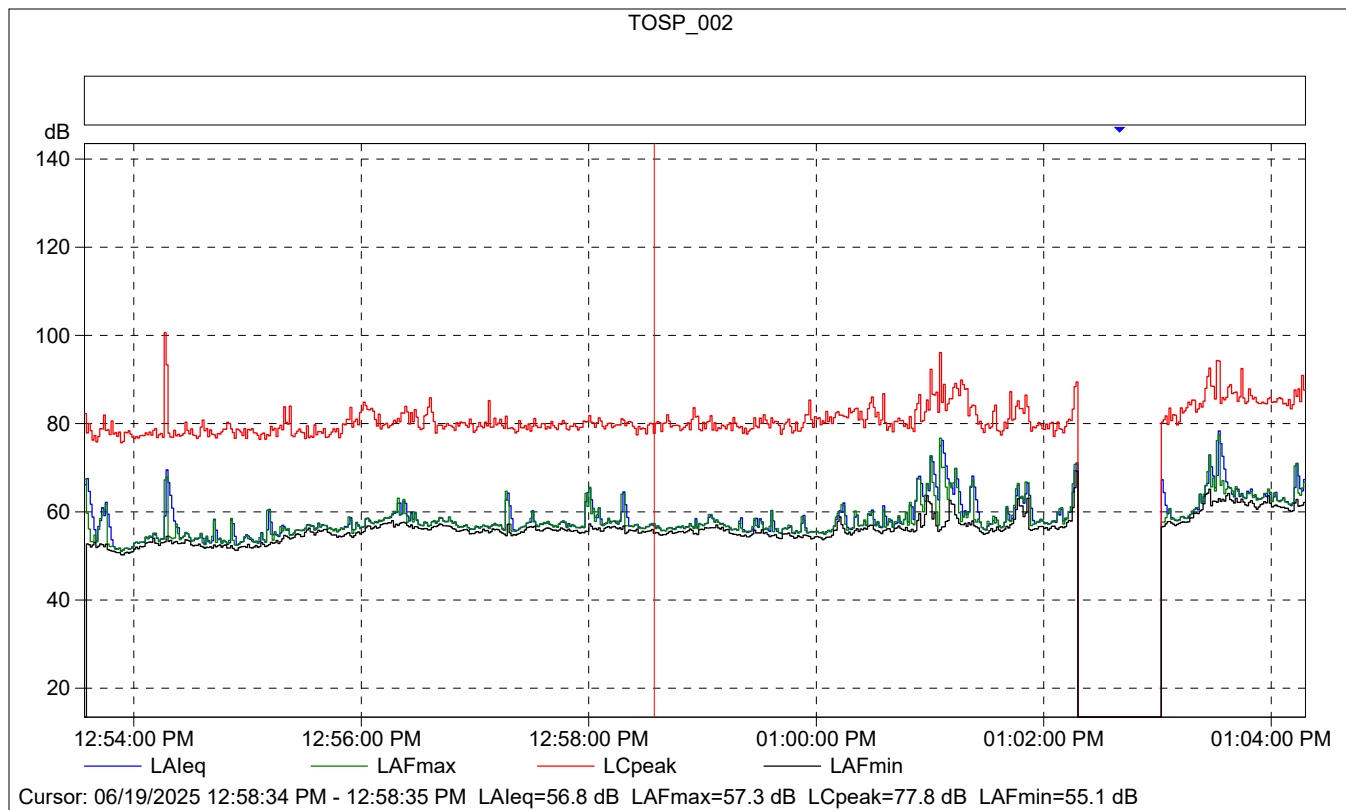
Instrument Serial Number:		3011133
Microphone Serial Number:		3086765
Input:		Top Socket
Windscreen Correction:		UA-1650
Sound Field Correction:		Free-field

Calibration Time:		06/19/2025 12:36:58
Calibration Type:		External reference
Sensitivity:		43.167807161808 mV/Pa

TOSP\_002

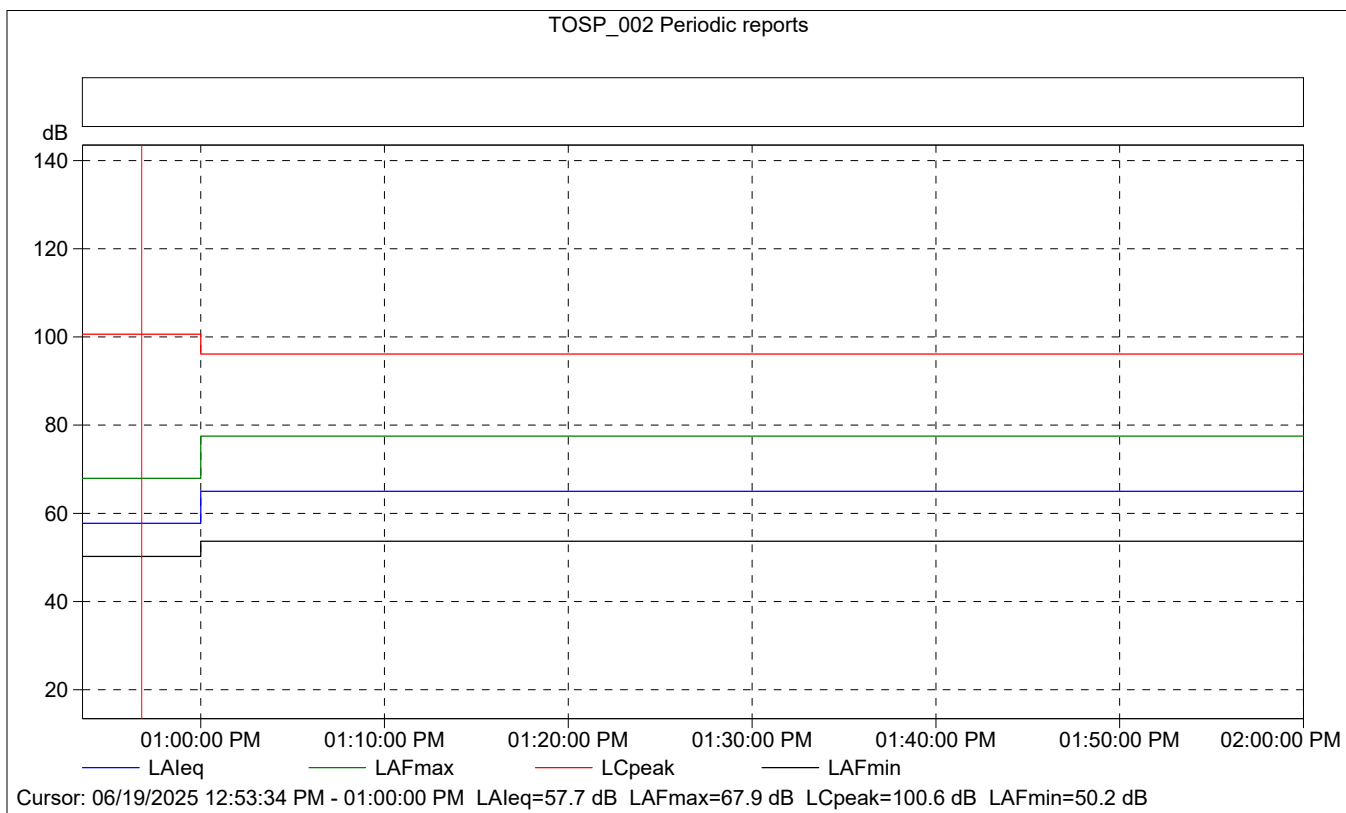
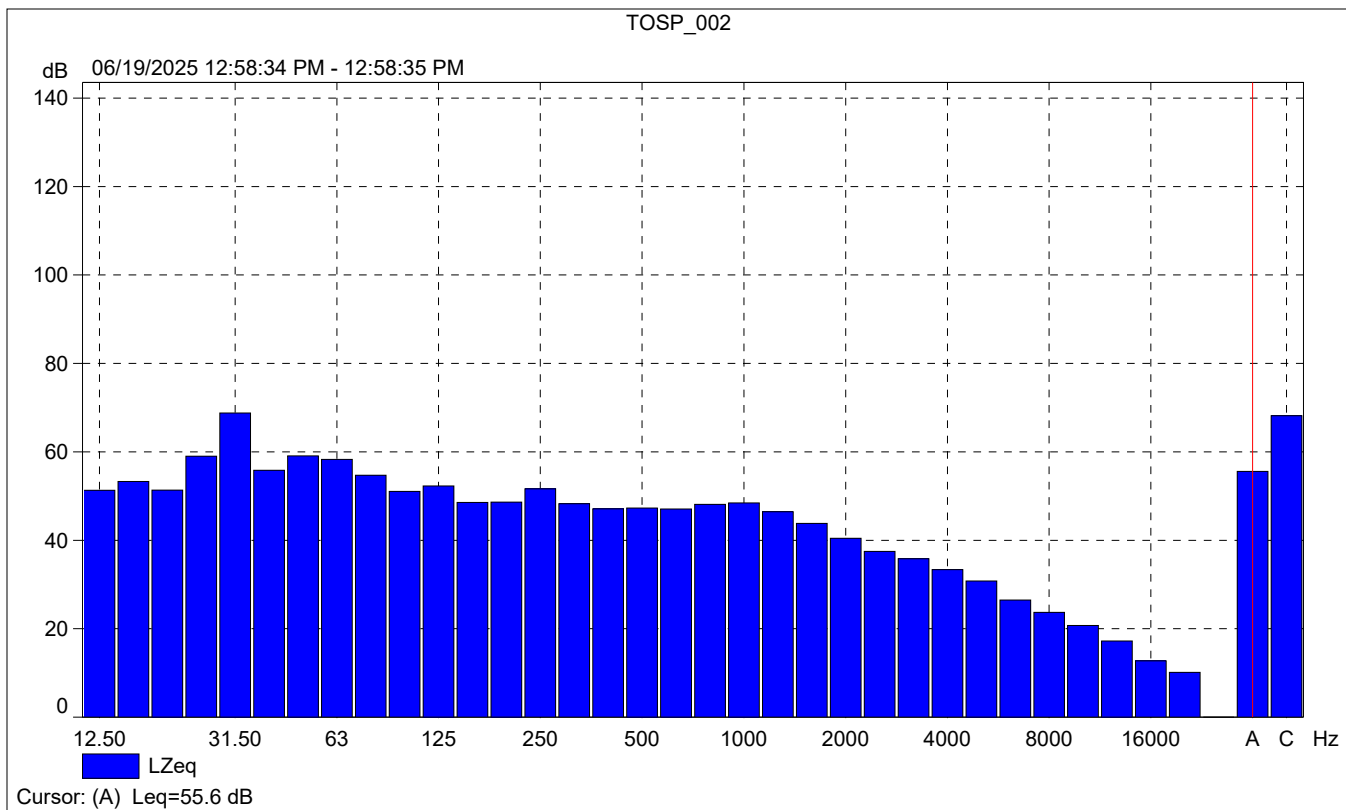
	Start time	End time	Elapsed time	Overload [%]	LAeq [dB]	LAFmax [dB]	LAFmin [dB]
Value				0.00	58.9	77.5	50.2
Time	12:53:34 PM	01:04:18 PM	0:10:00				
Date	06/19/2025	06/19/2025					





### TOSP\_002

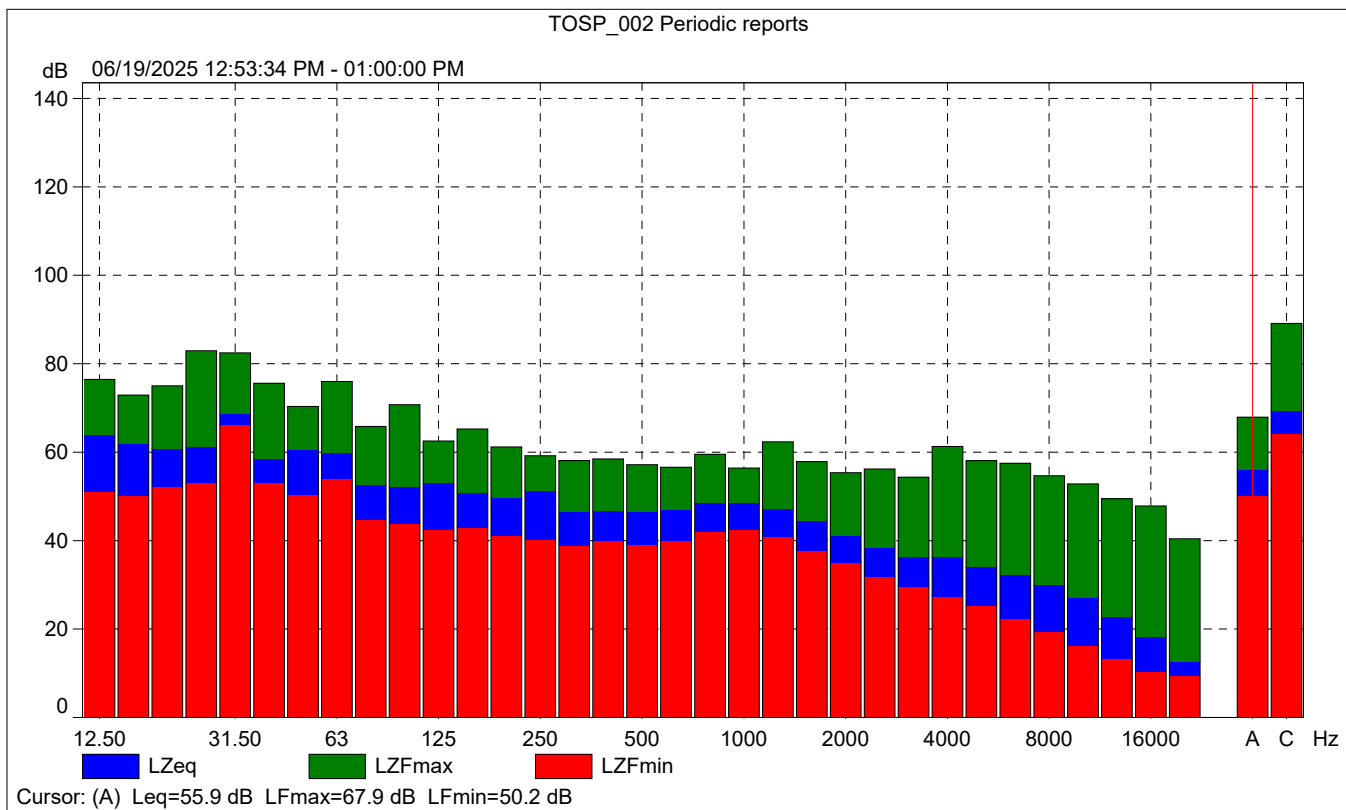
	Start time	Elapsed time	Overload [%]	LAeq [dB]	LAFmax [dB]	LAFmin [dB]
Value			0.00	56.8	57.3	55.1
Time	12:58:34 PM	0:00:01				
Date	06/19/2025					





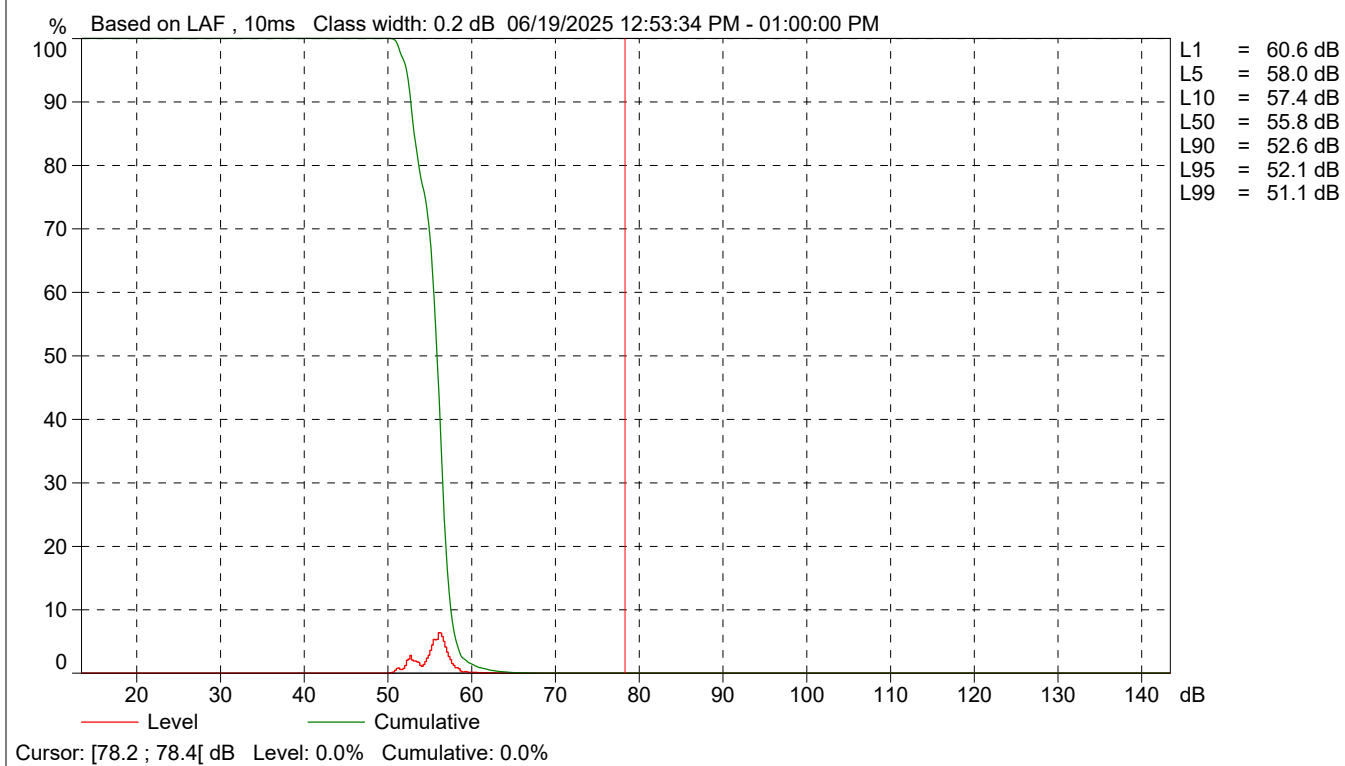
### TOSP\_002 Periodic reports

	Start time	Elapsed time	Overload [%]	LALeq [dB]	LAFmax [dB]	LAFmin [dB]
Value			0.00	57.7	67.9	50.2
Time	12:53:34 PM	0:06:26				
Date	06/19/2025					





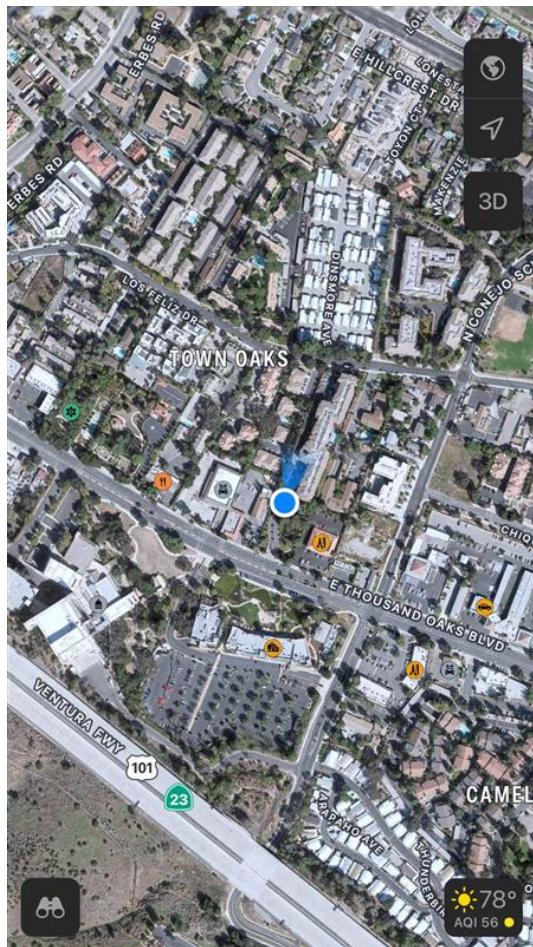
TOSP\_002 Periodic reports



<b>Site Number:</b> NM-3		
<b>Recorded By:</b> Dennis Dinh, Oscar Escobar		
<b>Job Number:</b> 207756		
<b>Date:</b> 6/19/2025		
<b>Time:</b> 1:08 p.m.		
<b>Location:</b> In front of Atria Gran Oaks Senior Facility		
<b>Source of Ambient Noise:</b> Traffic along Thousand Oaks Boulevard; Pedestrians talking		
Noise Data		
<b>L<sub>eq</sub> (dB)</b>	<b>L<sub>min</sub> (dB)</b>	<b>L<sub>max</sub> (dB)</b>
58.4	54.7	69.7

Equipment						
Category	Type	Vendor	Model	Serial No.	Cert. Date	Note
Sound	Sound Level Meter	Brüel & Kjær	2250	3011133	06/04/2023	
	Microphone	Brüel & Kjær	4189	3086765	06/04/2023	
	Preamp	Brüel & Kjær	ZC 0032	25380	06/04/2023	
	Calibrator	Brüel & Kjær	4231	2545667	06/04/2023	
Weather Data						
Est.	<b>Duration:</b> 10 minutes			<b>Sky:</b> Sunny		
	<b>Note:</b> dBA Offset = -0.04			<b>Sensor Height (ft):</b> 5 ft		
	<b>Wind Ave Speed (mph / m/s)</b>		<b>Temperature (degrees Fahrenheit)</b>		<b>Barometer Pressure (inches)</b>	
	9		78		29.82	

**Photo of Measurement Location**





2250

Instrument:		2250
Application:		BZ7225 Version 4.7.6
Start Time:		06/19/2025 13:08:29
End Time:		06/19/2025 13:18:29
Elapsed Time:		00:10:00
Bandwidth:		1/3-octave
Max Input Level:		142.21

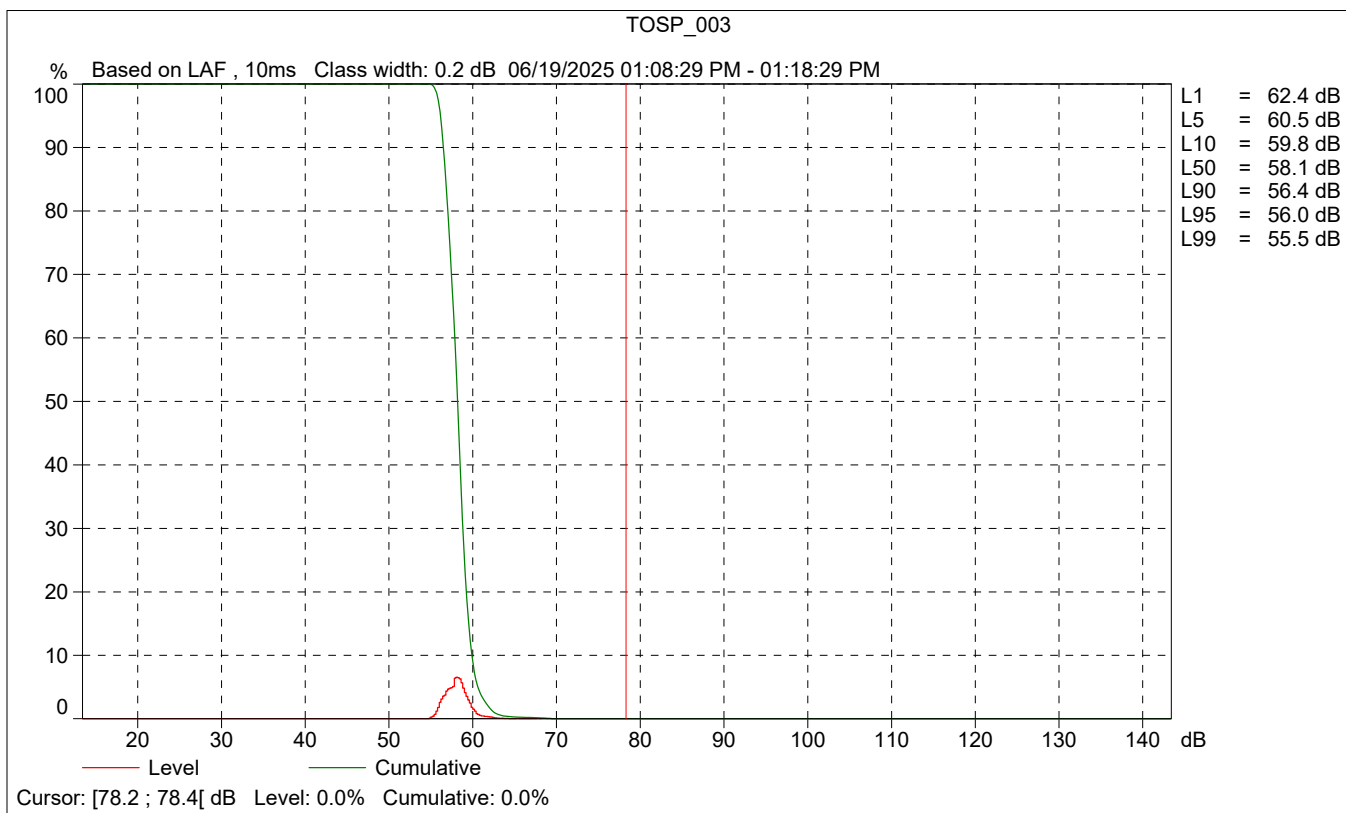
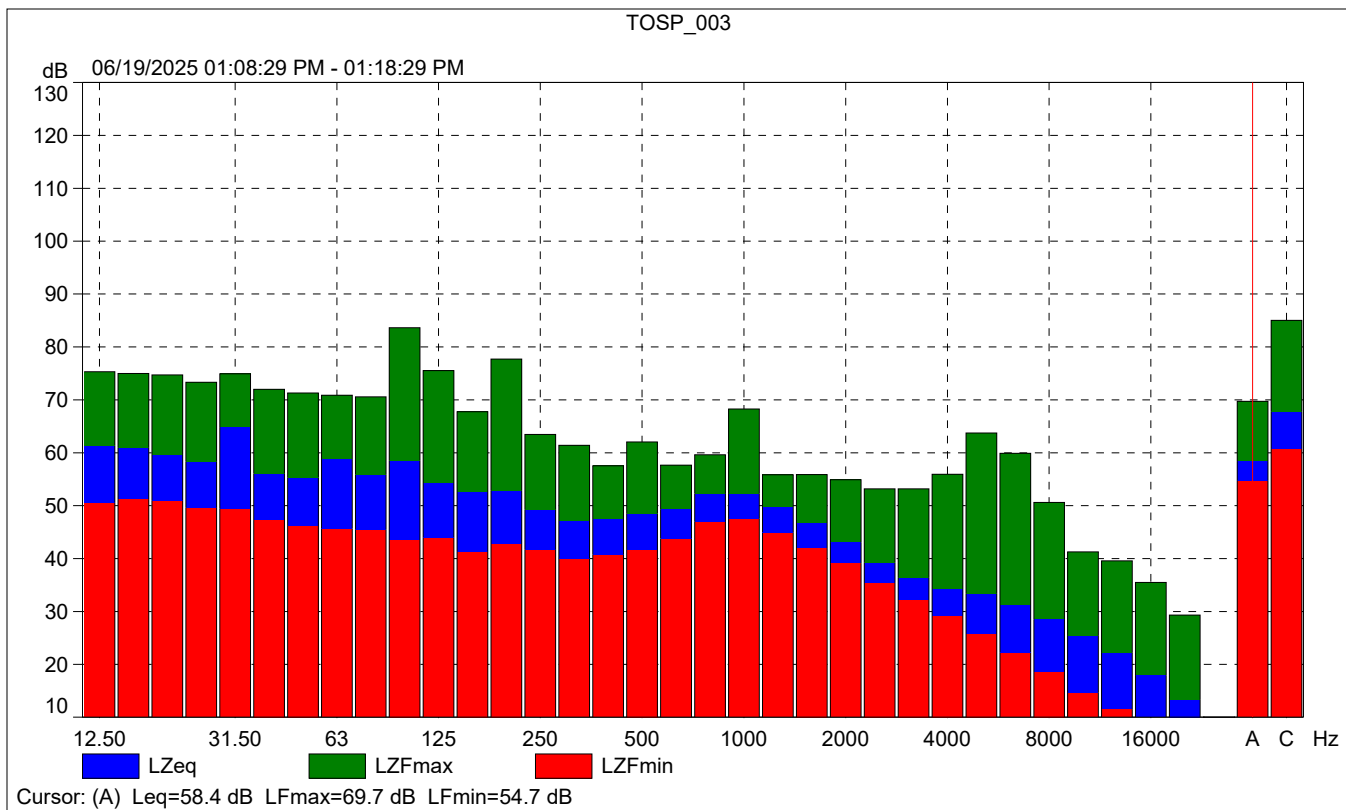
	Time	Frequency
Broadband (excl. Peak):	FSI	AC
Broadband Peak:		C
Spectrum:	FS	Z

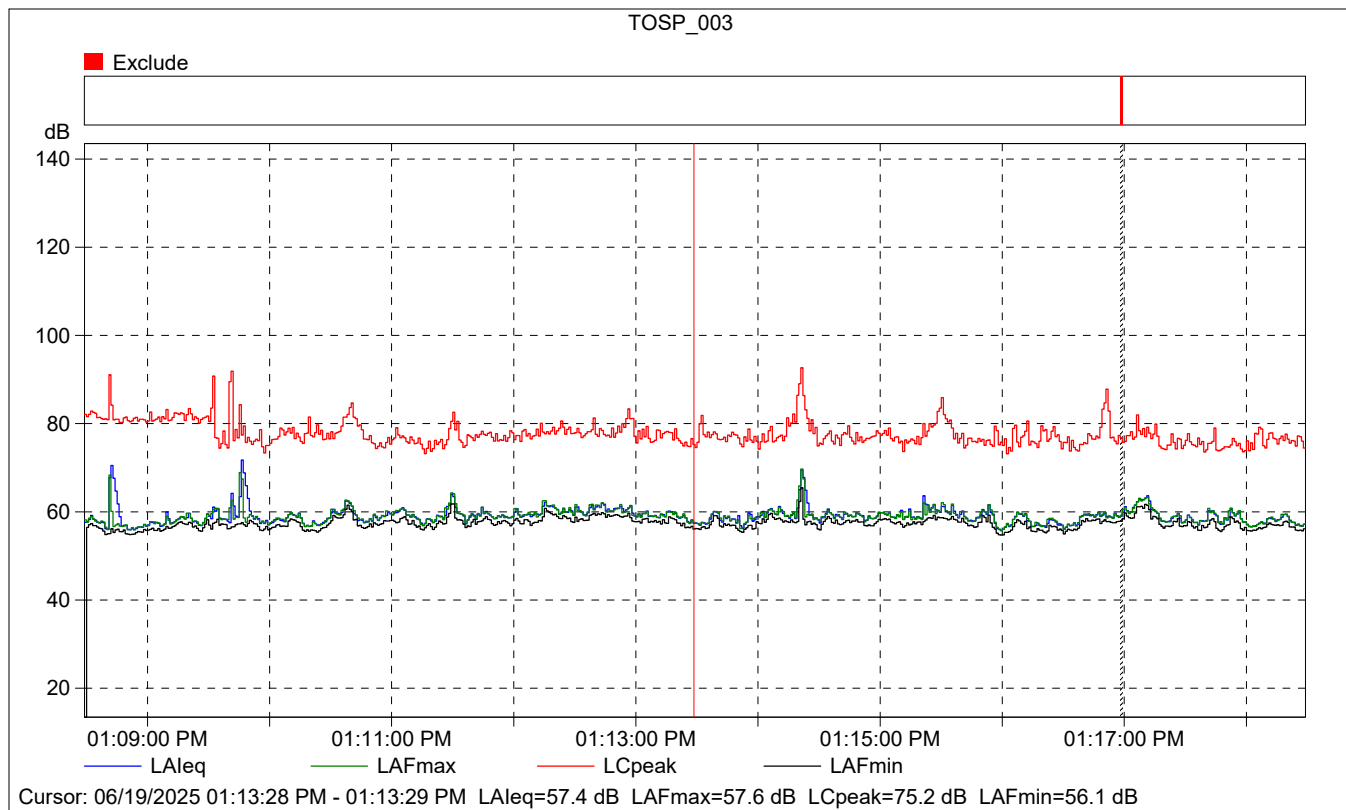
Instrument Serial Number:		3011133
Microphone Serial Number:		3086765
Input:		Top Socket
Windscreen Correction:		UA-1650
Sound Field Correction:		Free-field

Calibration Time:		06/19/2025 12:36:58
Calibration Type:		External reference
Sensitivity:		43.167807161808 mV/Pa

TOSP\_003

	Start time	End time	Elapsed time	Overload [%]	LAeq [dB]	LAFmax [dB]	LAFmin [dB]
Value				0.00	58.4	69.7	54.7
Time	01:08:29 PM	01:18:29 PM	0:10:00				
Date	06/19/2025	06/19/2025					





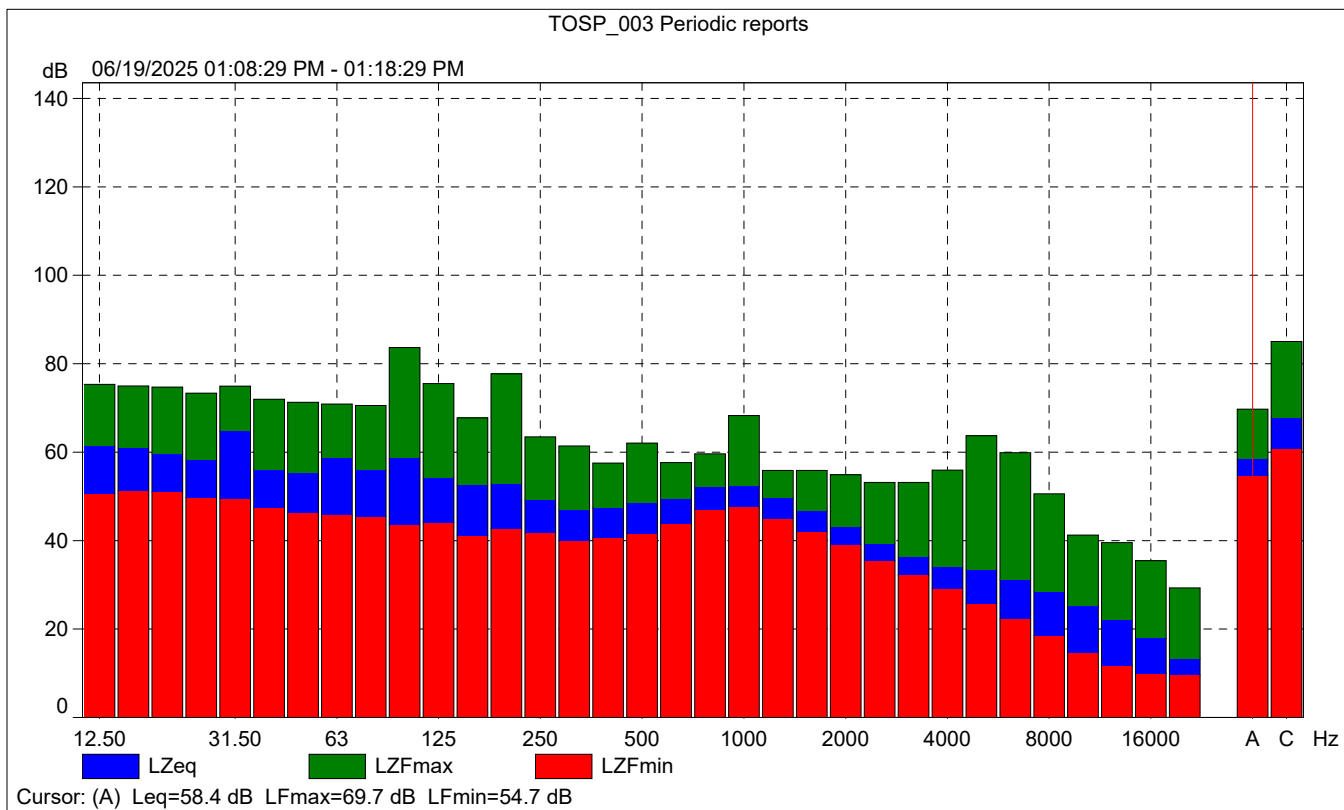
### TOSP\_003

	Start time	Elapsed time	Overload [%]	LAeq [dB]	LAFmax [dB]	LAFmin [dB]
Value			0.00	57.4	57.6	56.1
Time	01:13:28 PM	0:00:01				
Date	06/19/2025					



# TOSP\_003 Periodic reports

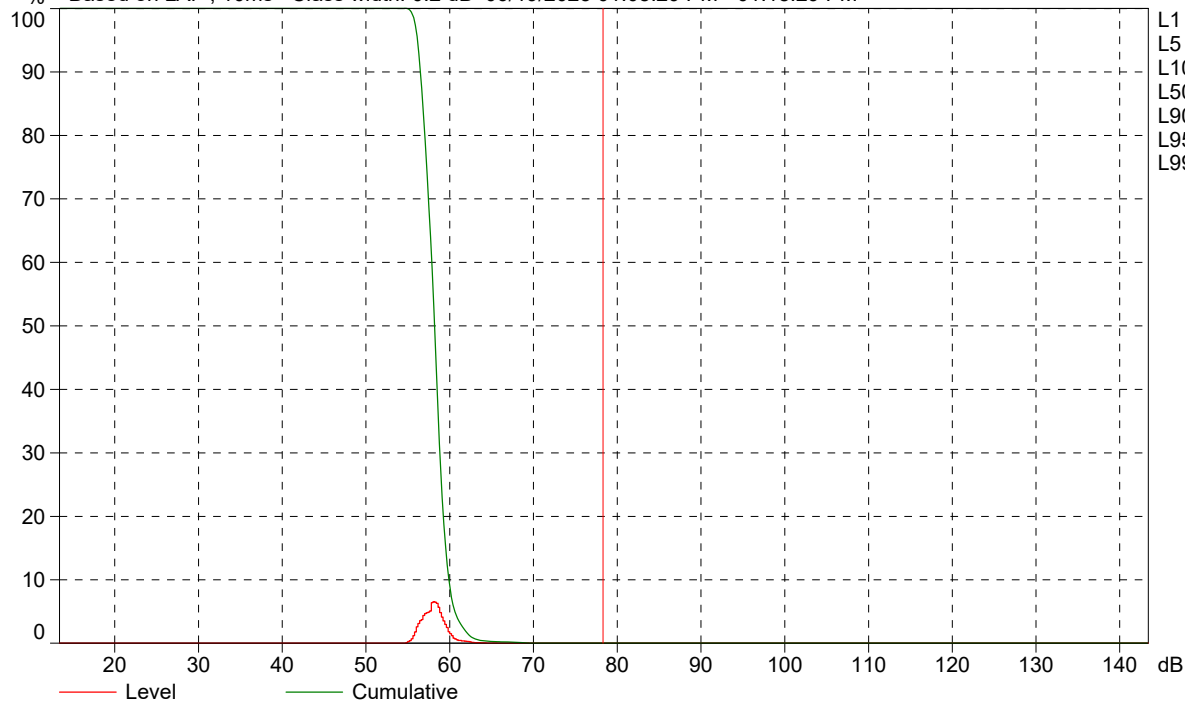
	Start time	Elapsed time	Overload [%]	LALeq [dB]	LAFmax [dB]	LAFmin [dB]
Value			0.00	59.7	69.7	54.7
Time	01:08:29 PM	0:10:00				
Date	06/19/2025					





TOSP\_003 Periodic reports

% Based on LAF, 10ms Class width: 0.2 dB 06/19/2025 01:08:29 PM - 01:18:29 PM



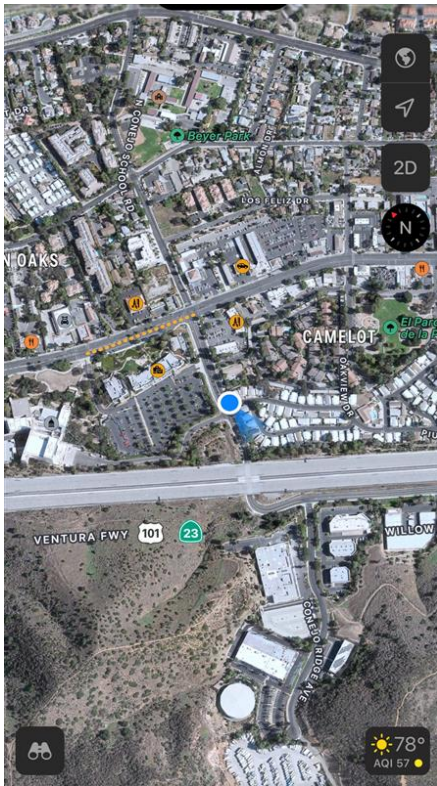
- L1 = 62.4 dB
- L5 = 60.5 dB
- L10 = 59.8 dB
- L50 = 58.1 dB
- L90 = 56.4 dB
- L95 = 56.0 dB
- L99 = 55.5 dB

Cursor: [78.2 ; 78.4] dB Level: 0.0% Cumulative: 0.0%

<b>Site Number:</b> NM-4		
<b>Recorded By:</b> Dennis Dinh, Oscar Escobar		
<b>Job Number:</b> 207756		
<b>Date:</b> 6/19/2025		
<b>Time:</b> 1:22 p.m.		
<b>Location:</b> In front of the driveway to Thunderbird Oaks Mobilehome Club		
<b>Source of Ambient Noise:</b> Traffic along Conejo School Road		
Noise Data		
<b>L<sub>eq</sub> (dB)</b>	<b>L<sub>min</sub> (dB)</b>	<b>L<sub>max</sub> (dB)</b>
64.4	58.0	76.8

Equipment						
Category	Type	Vendor	Model	Serial No.	Cert. Date	Note
Sound	Sound Level Meter	Brüel & Kjær	2250	3011133	06/04/2023	
	Microphone	Brüel & Kjær	4189	3086765	06/04/2023	
	Preamp	Brüel & Kjær	ZC 0032	25380	06/04/2023	
	Calibrator	Brüel & Kjær	4231	2545667	06/04/2023	
Weather Data						
Est.	<b>Duration:</b> 10 minutes			<b>Sky:</b> Sunny		
	<b>Note:</b> dBA Offset = -0.04			<b>Sensor Height (ft):</b> 5 ft		
	<b>Wind Ave Speed (mph / m/s)</b>		<b>Temperature (degrees Fahrenheit)</b>		<b>Barometer Pressure (inches)</b>	
	9		78		29.82	

**Photo of Measurement Location**





2250

Instrument:		2250
Application:		BZ7225 Version 4.7.6
Start Time:		06/19/2025 13:22:14
End Time:		06/19/2025 13:32:14
Elapsed Time:		00:10:00
Bandwidth:		1/3-octave
Max Input Level:		142.21

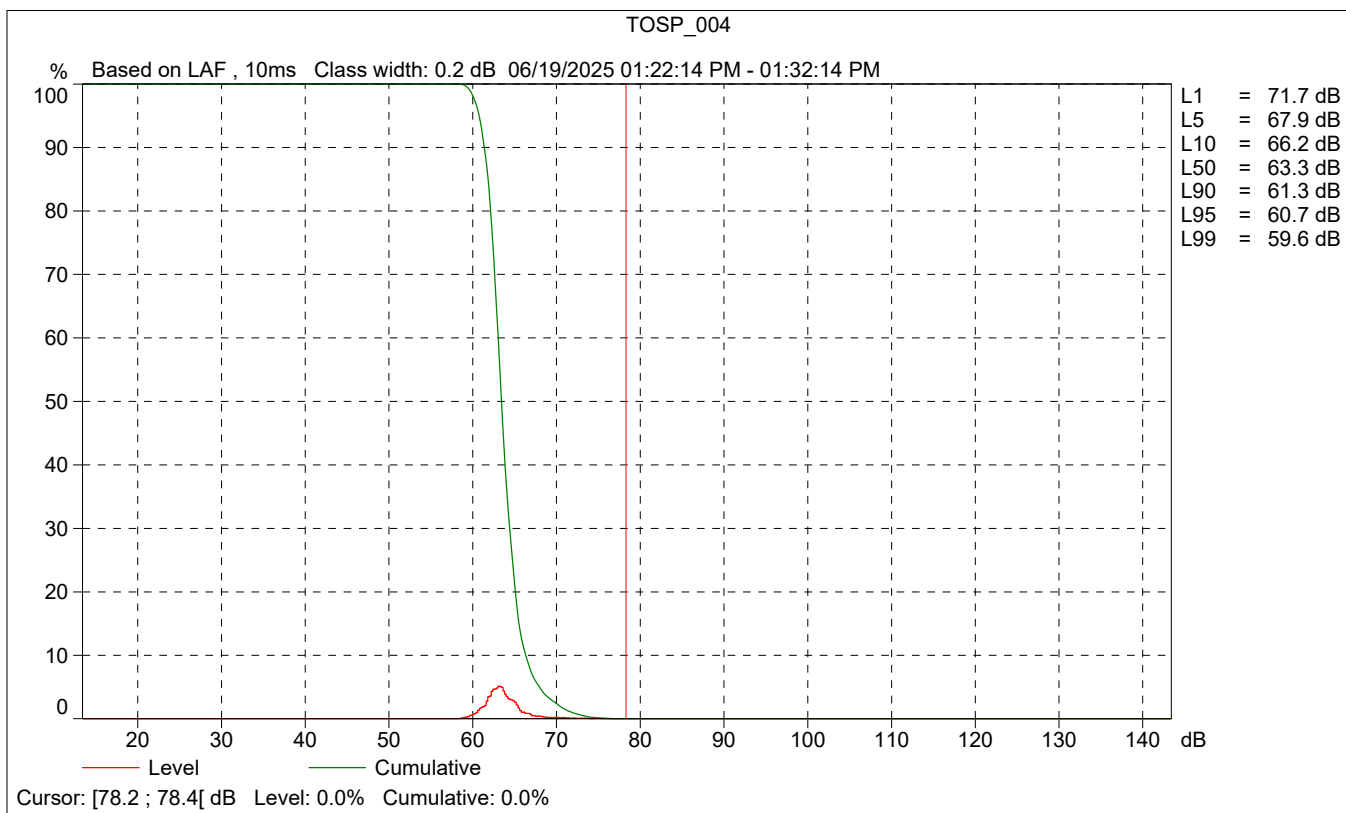
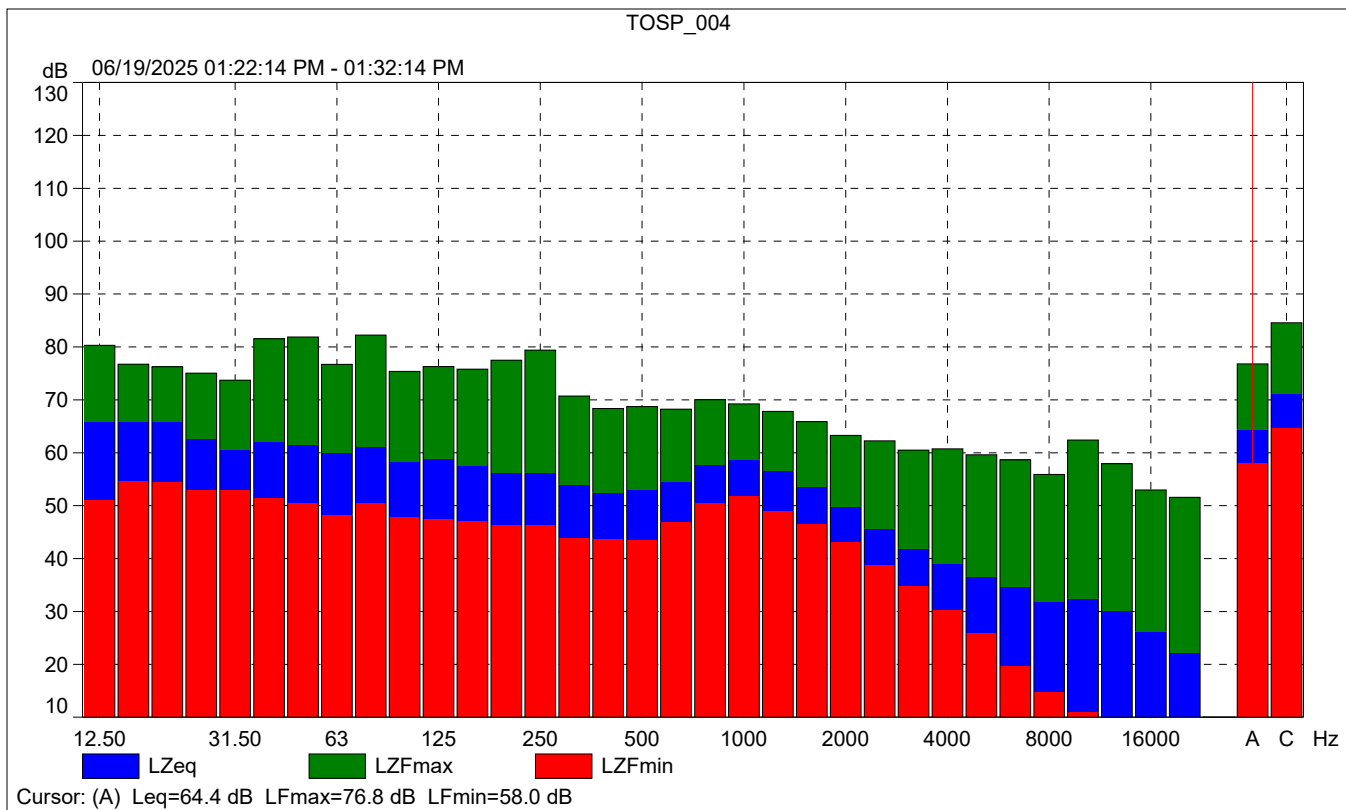
	Time	Frequency
Broadband (excl. Peak):	FSI	AC
Broadband Peak:		C
Spectrum:	FS	Z

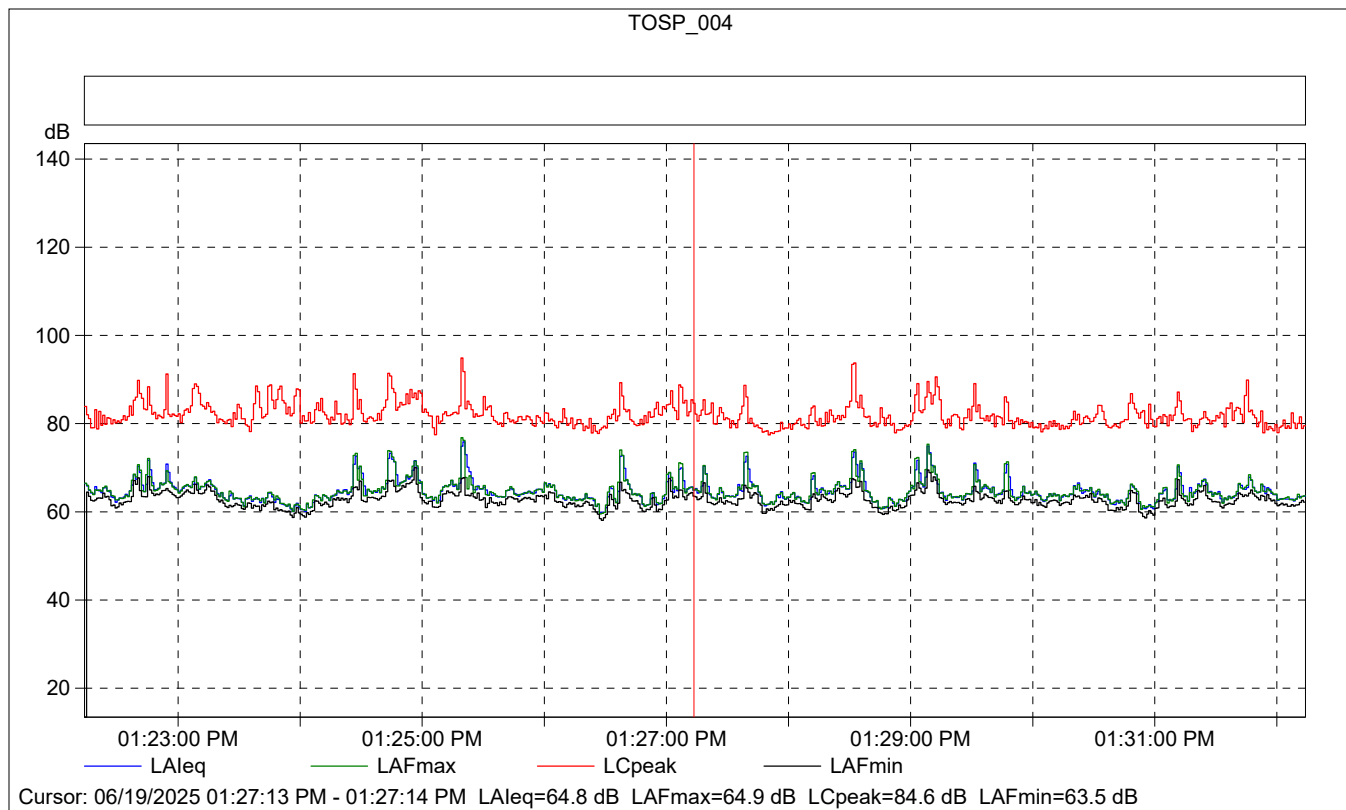
Instrument Serial Number:		3011133
Microphone Serial Number:		3086765
Input:		Top Socket
Windscreen Correction:		UA-1650
Sound Field Correction:		Free-field

Calibration Time:		06/19/2025 12:36:58
Calibration Type:		External reference
Sensitivity:		43.167807161808 mV/Pa

TOSP\_004

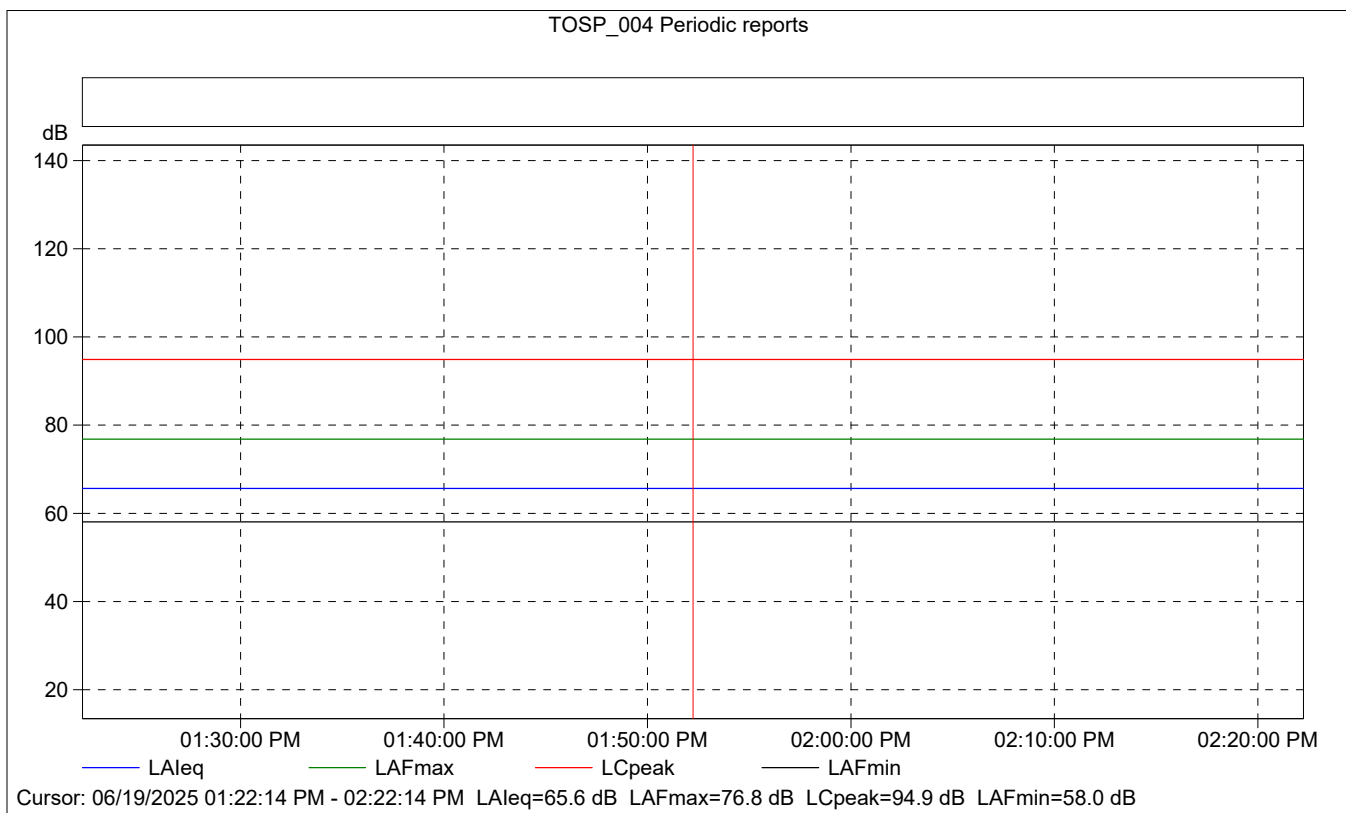
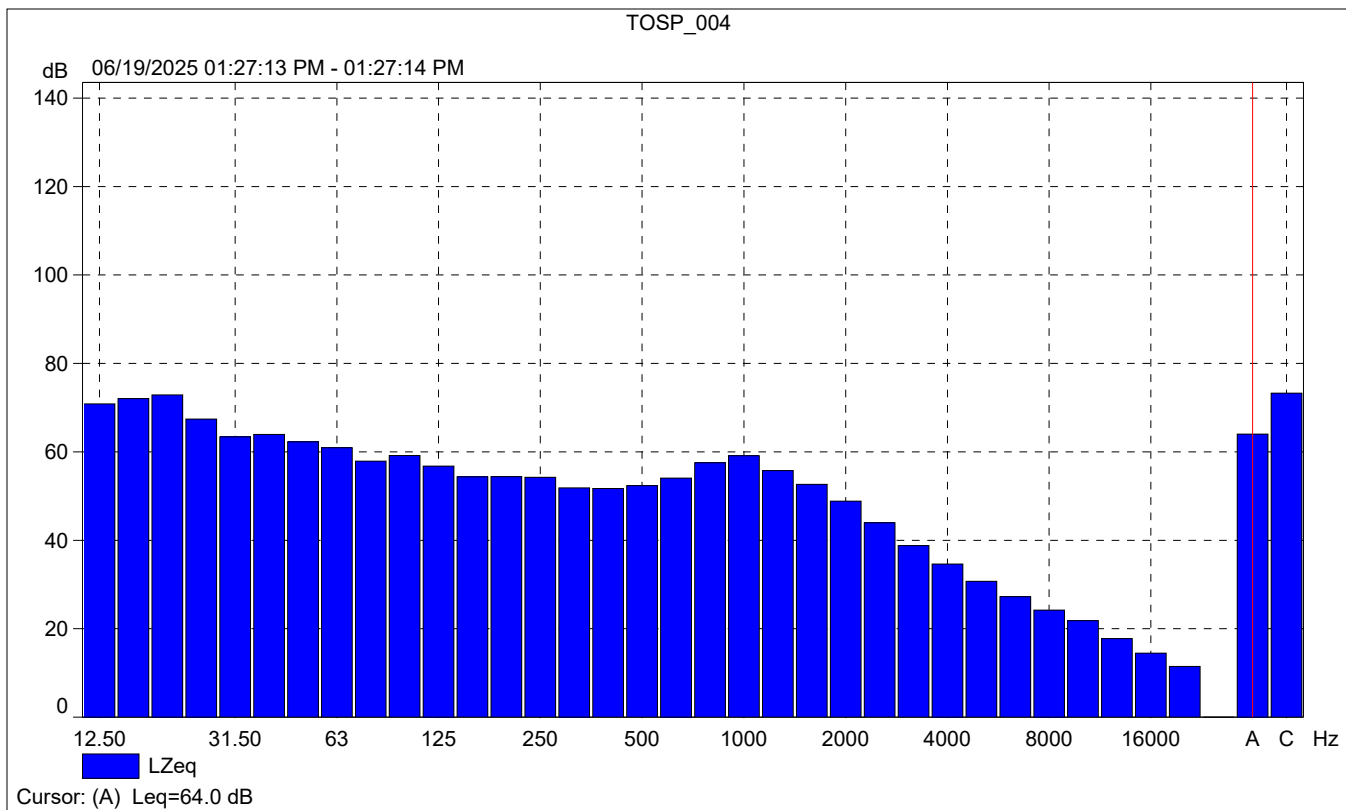
	Start time	End time	Elapsed time	Overload [%]	LAeq [dB]	LAFmax [dB]	LAFmin [dB]
Value				0.00	64.4	76.8	58.0
Time	01:22:14 PM	01:32:14 PM	0:10:00				
Date	06/19/2025	06/19/2025					





### TOSP\_004

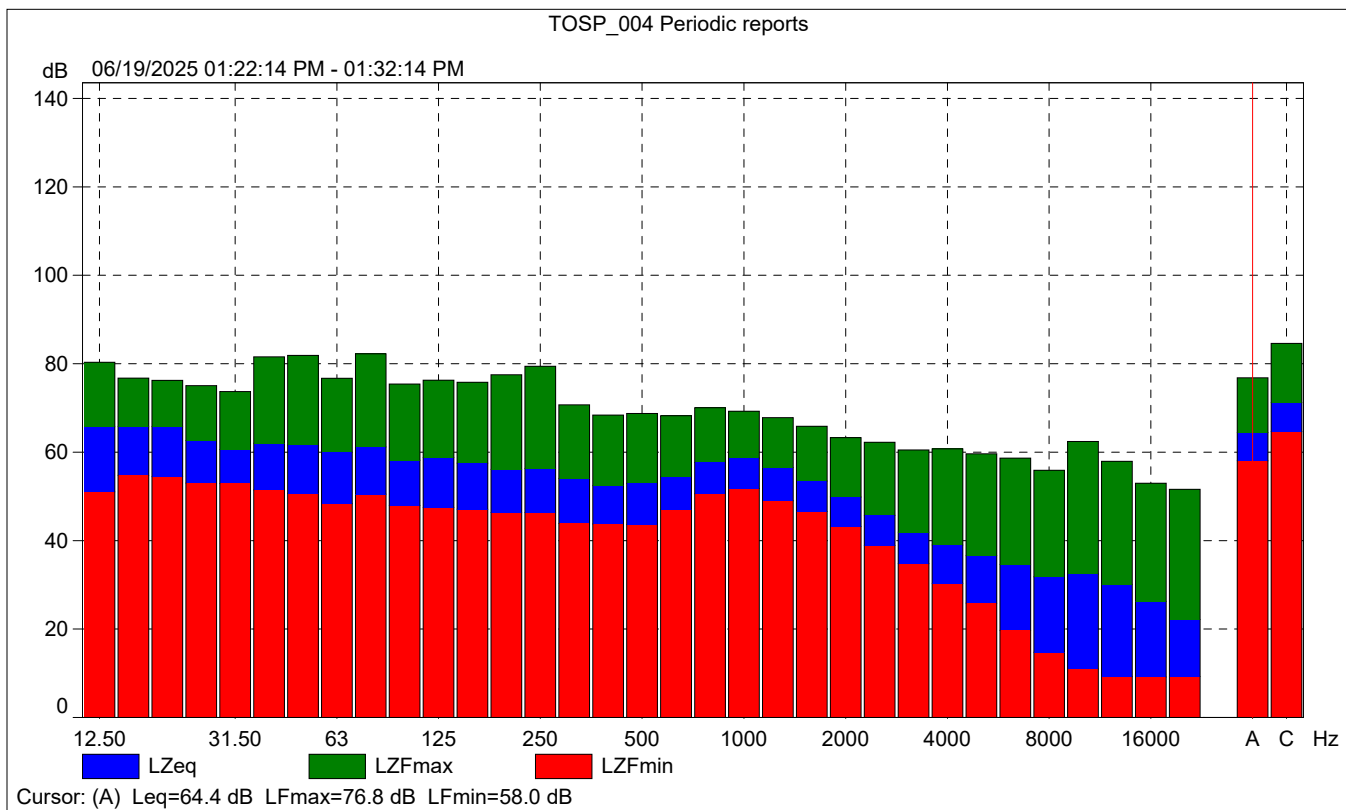
	Start time	Elapsed time	Overload [%]	LAeq [dB]	LAFmax [dB]	LAFmin [dB]
Value			0.00	64.8	64.9	63.5
Time	01:27:13 PM	0:00:01				
Date	06/19/2025					





# TOSP\_004 Periodic reports

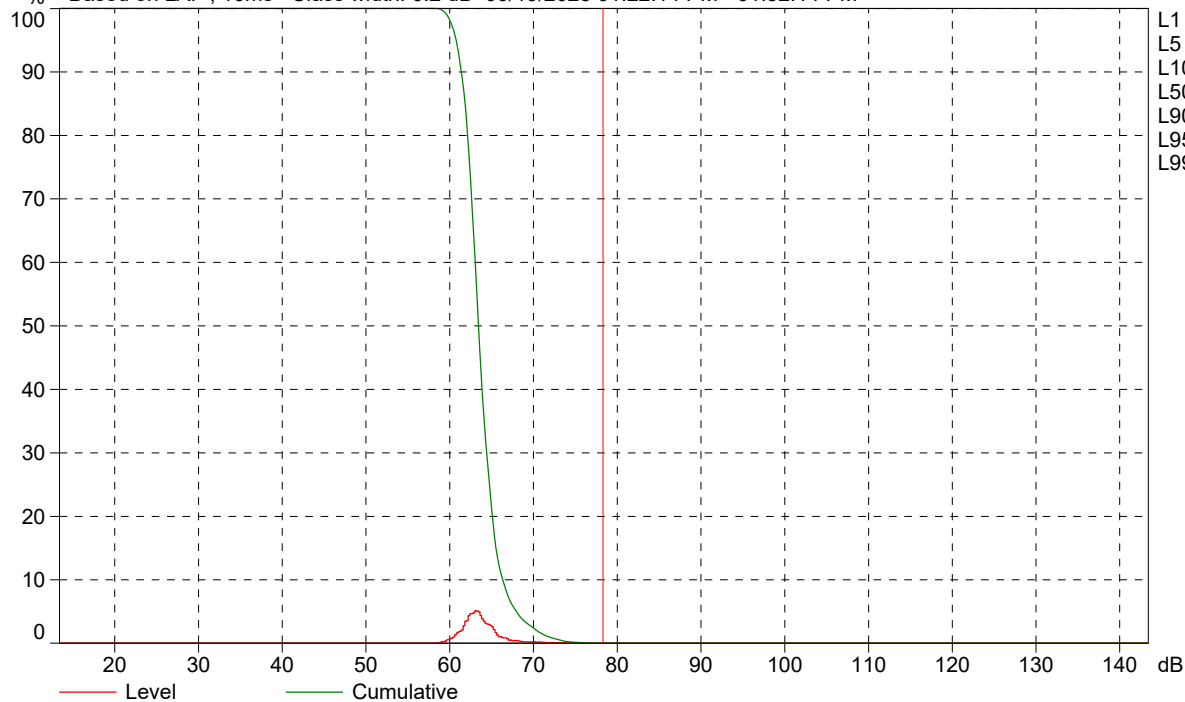
	Start time	Elapsed time	Overload [%]	LAFeq [dB]	LAFmax [dB]	LAFmin [dB]
Value			0.00	65.6	76.8	58.0
Time	01:22:14 PM	0:10:00				
Date	06/19/2025					





TOSP\_004 Periodic reports

% Based on LAF, 10ms Class width: 0.2 dB 06/19/2025 01:22:14 PM - 01:32:14 PM



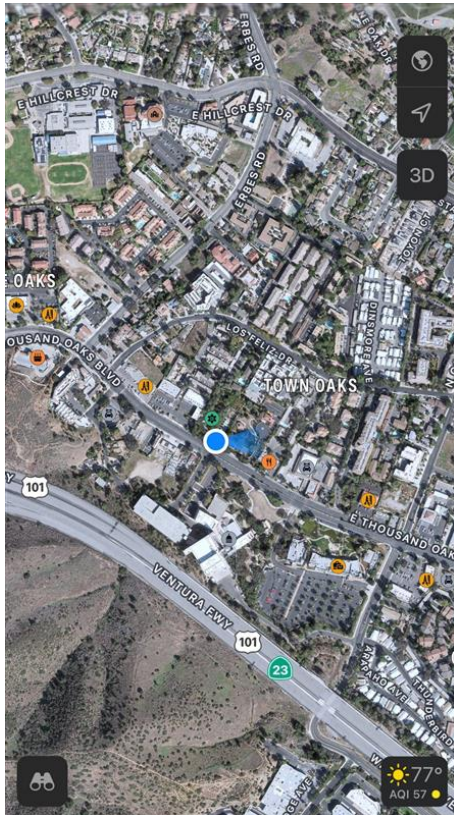
- L1 = 71.7 dB
- L5 = 67.9 dB
- L10 = 66.2 dB
- L50 = 63.3 dB
- L90 = 61.3 dB
- L95 = 60.7 dB
- L99 = 59.6 dB

Cursor: [78.2 ; 78.4] dB Level: 0.0% Cumulative: 0.0%

<b>Site Number:</b> NM-5		
<b>Recorded By:</b> Dennis Dinh, Oscar Escobar		
<b>Job Number:</b> 207756		
<b>Date:</b> 6/19/2025		
<b>Time:</b> 1:49 p.m.		
<b>Location:</b> In front of Gardens of the World		
<b>Source of Ambient Noise:</b> Traffic along Thousand Oaks Boulevard		
Noise Data		
<b>L<sub>eq</sub> (dB)</b>	<b>L<sub>min</sub> (dB)</b>	<b>L<sub>max</sub> (dB)</b>
66.1	56.6	78.6

Equipment						
Category	Type	Vendor	Model	Serial No.	Cert. Date	Note
Sound	Sound Level Meter	Brüel & Kjær	2250	3011133	06/04/2023	
	Microphone	Brüel & Kjær	4189	3086765	06/04/2023	
	Preamp	Brüel & Kjær	ZC 0032	25380	06/04/2023	
	Calibrator	Brüel & Kjær	4231	2545667	06/04/2023	
Weather Data						
Est.	<b>Duration:</b> 10 minutes			<b>Sky:</b> Sunny		
	<b>Note:</b> dBA Offset = -0.04			<b>Sensor Height (ft):</b> 5 ft		
	<b>Wind Ave Speed (mph / m/s)</b>		<b>Temperature (degrees Fahrenheit)</b>		<b>Barometer Pressure (inches)</b>	
	9		78		29.82	

**Photo of Measurement Location**





2250

Instrument:		2250
Application:		BZ7225 Version 4.7.6
Start Time:		06/19/2025 13:49:28
End Time:		06/19/2025 13:59:28
Elapsed Time:		00:10:00
Bandwidth:		1/3-octave
Max Input Level:		142.21

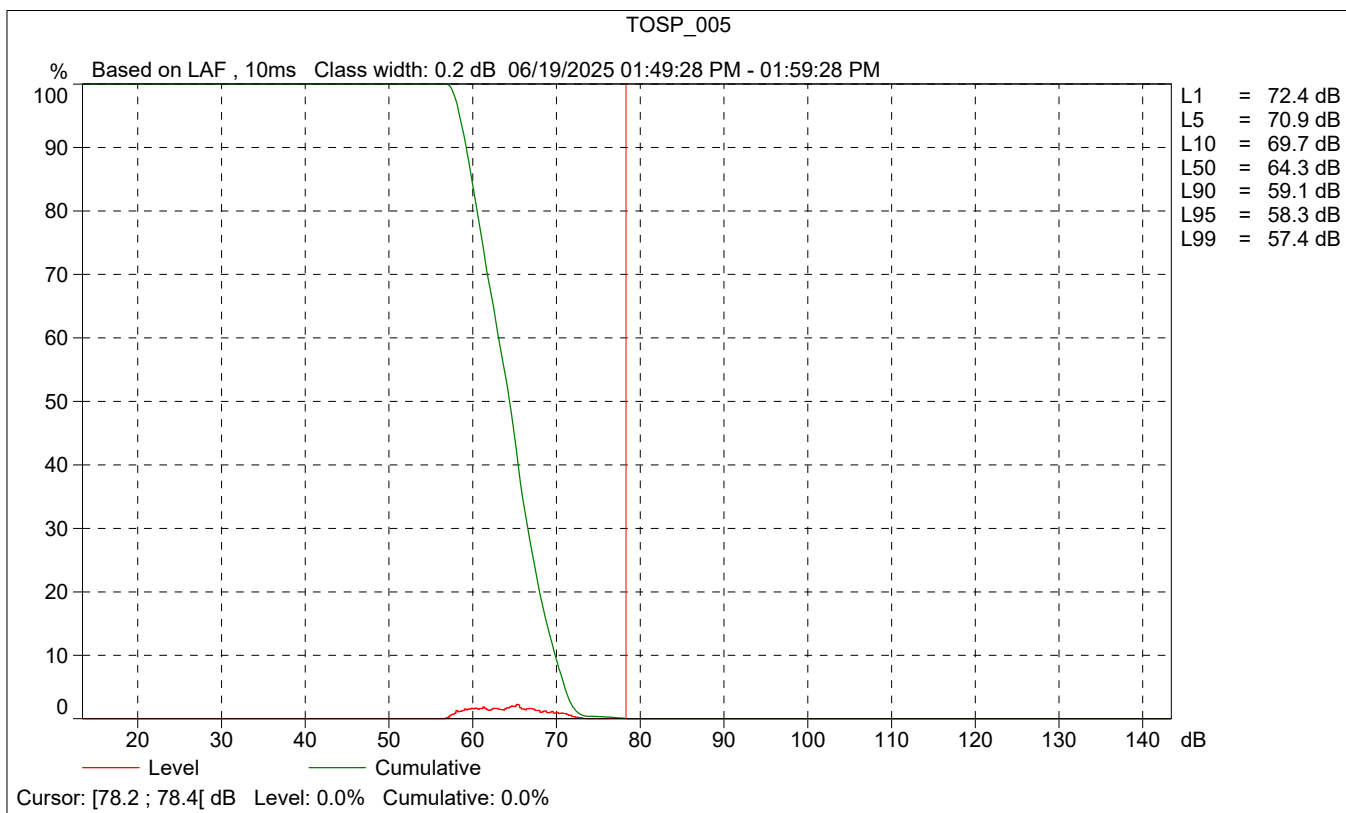
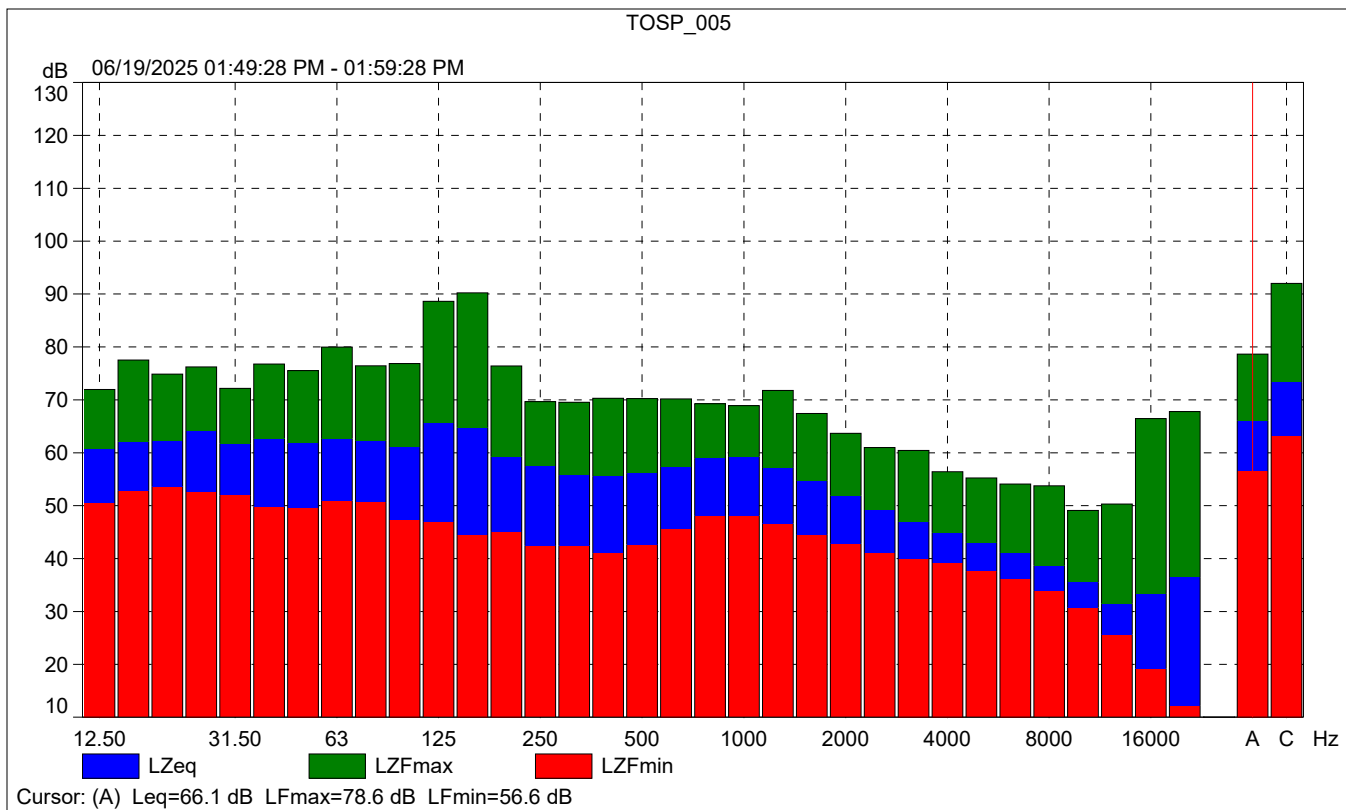
	Time	Frequency
Broadband (excl. Peak):	FSI	AC
Broadband Peak:		C
Spectrum:	FS	Z

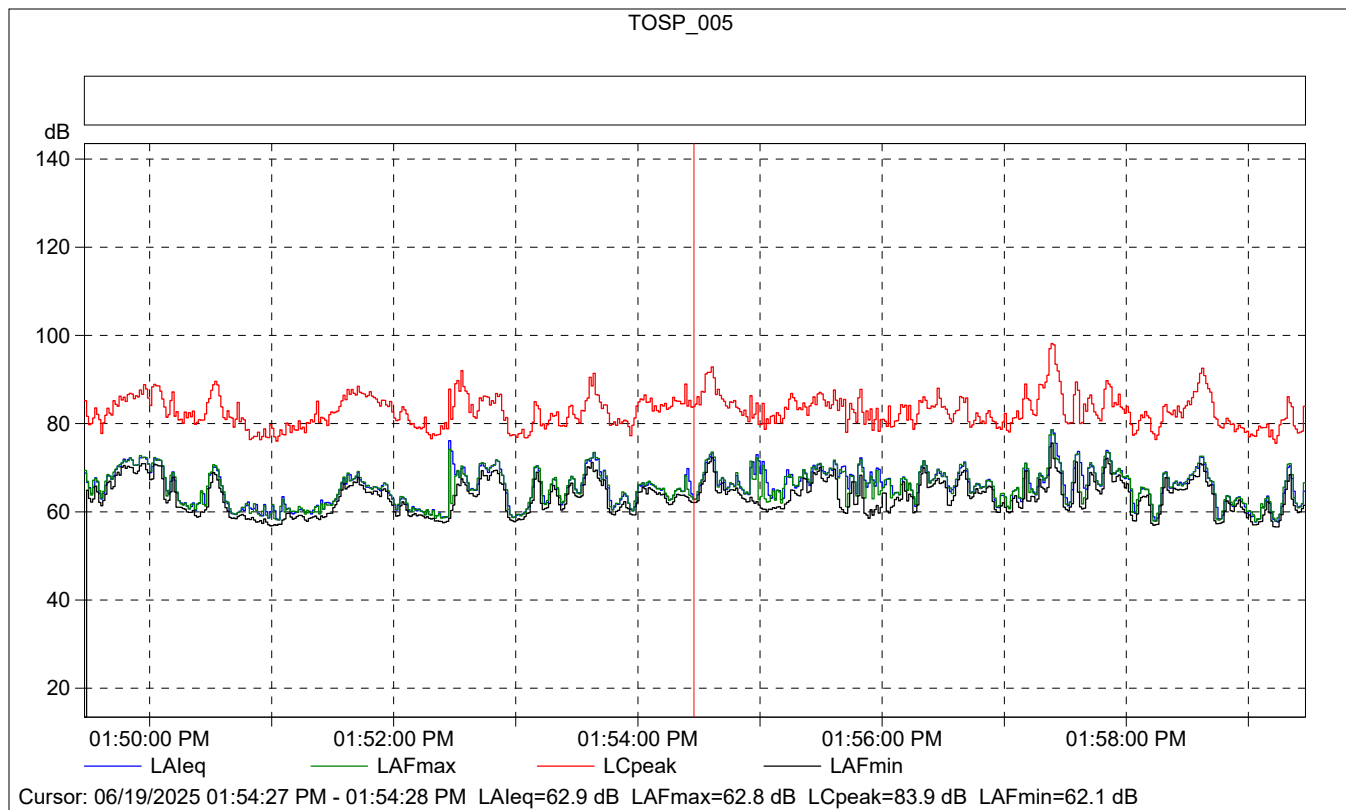
Instrument Serial Number:		3011133
Microphone Serial Number:		3086765
Input:		Top Socket
Windscreen Correction:		UA-1650
Sound Field Correction:		Free-field

Calibration Time:		06/19/2025 12:36:58
Calibration Type:		External reference
Sensitivity:		43.167807161808 mV/Pa

TOSP\_005

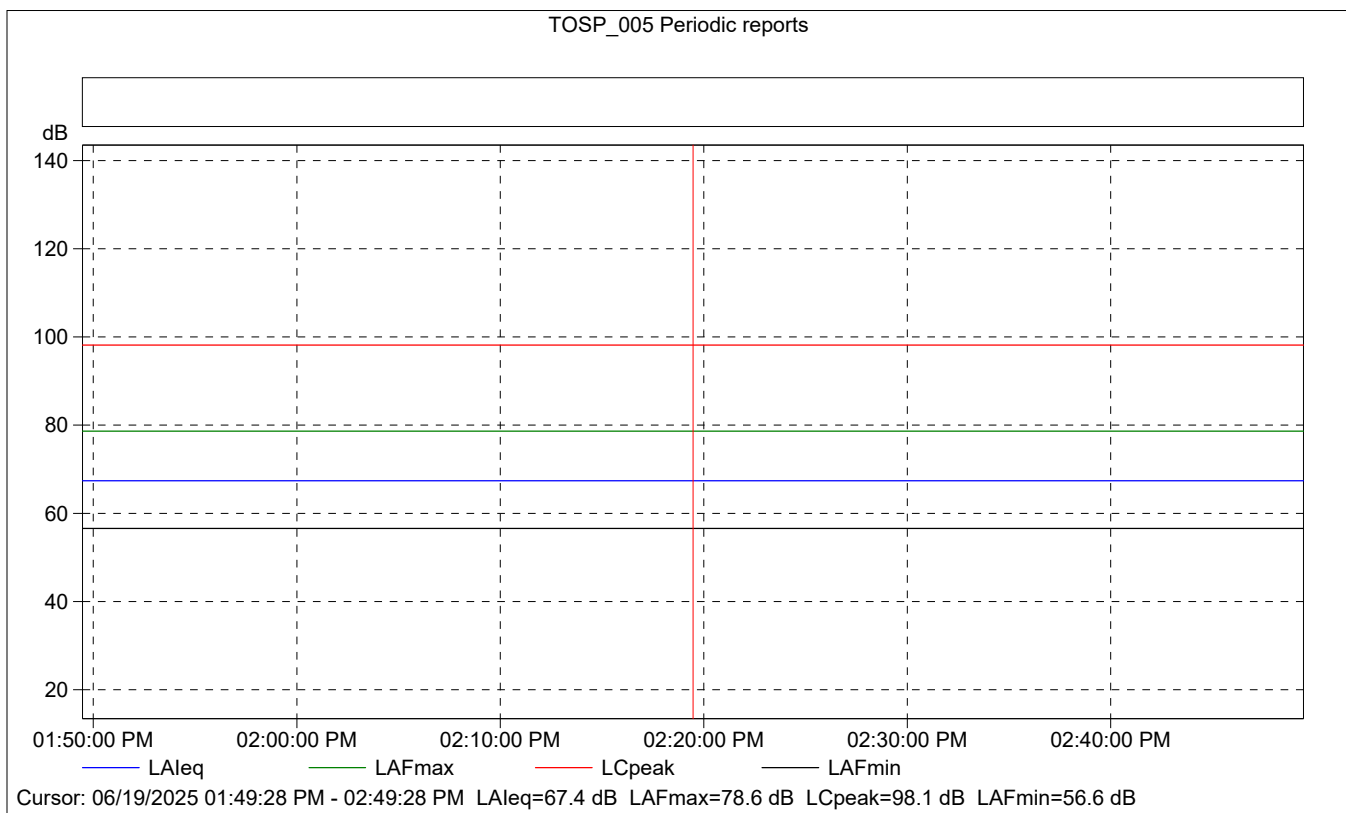
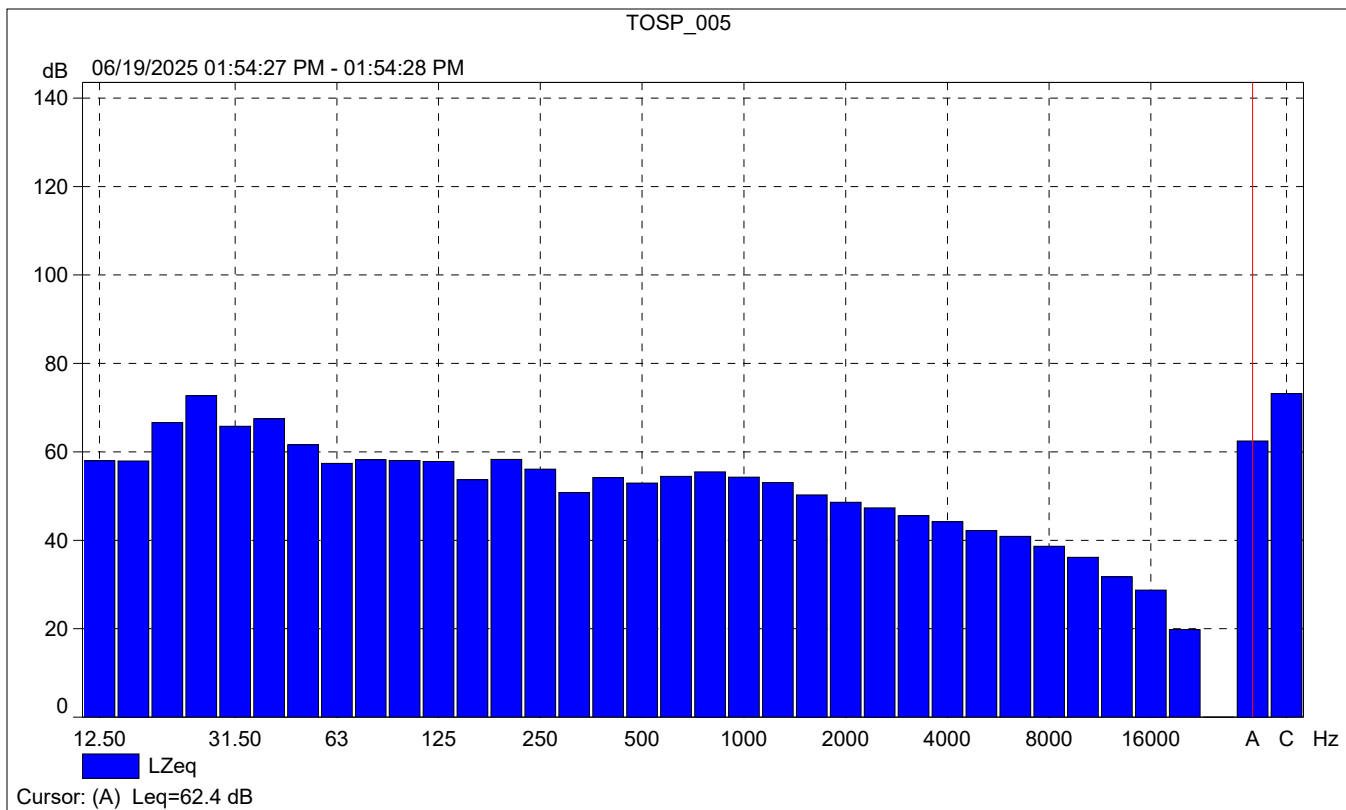
	Start time	End time	Elapsed time	Overload [%]	LAeq [dB]	LAFmax [dB]	LAFmin [dB]
Value				0.00	66.1	78.6	56.6
Time	01:49:28 PM	01:59:28 PM	0:10:00				
Date	06/19/2025	06/19/2025					





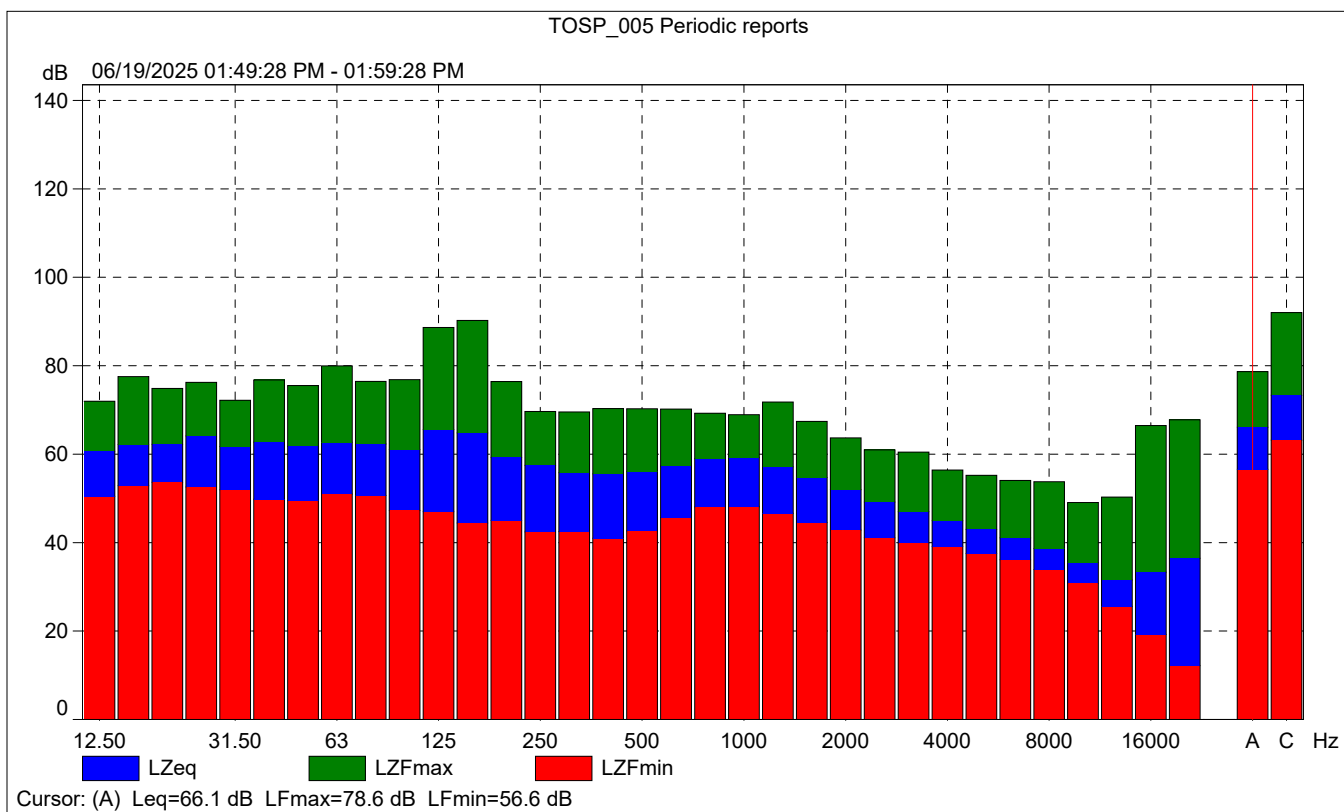
### TOSP\_005

	Start time	Elapsed time	Overload [%]	LAleq [dB]	LAFmax [dB]	LAFmin [dB]
Value			0.00	62.9	62.8	62.1
Time	01:54:27 PM	0:00:01				
Date	06/19/2025					



# TOSP\_005 Periodic reports

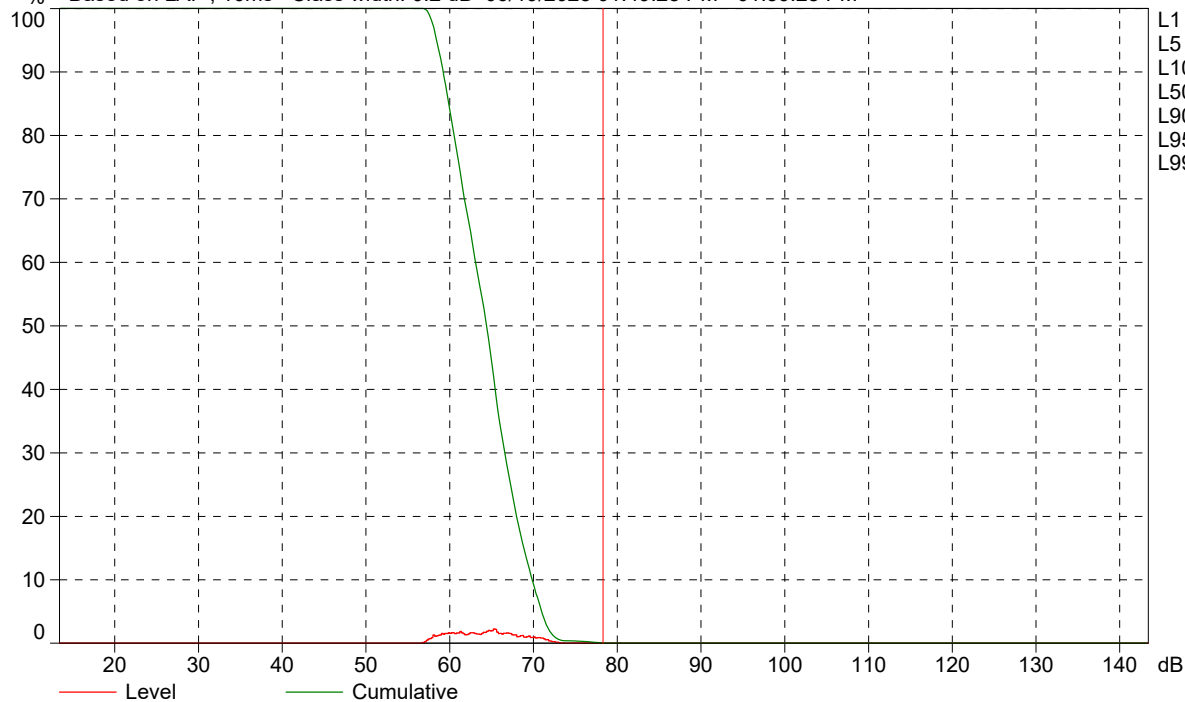
	Start time	Elapsed time	Overload [%]	LAFeq [dB]	LAFmax [dB]	LAFmin [dB]
Value			0.00	67.4	78.6	56.6
Time	01:49:28 PM	0:10:00				
Date	06/19/2025					





TOSP\_005 Periodic reports

% Based on LAF, 10ms Class width: 0.2 dB 06/19/2025 01:49:28 PM - 01:59:28 PM



- L1 = 72.4 dB
- L5 = 70.9 dB
- L10 = 69.7 dB
- L50 = 64.3 dB
- L90 = 59.1 dB
- L95 = 58.3 dB
- L99 = 57.4 dB

Cursor: [78.2 ; 78.4] dB Level: 0.0% Cumulative: 0.0%

Roadway Construction Noise Model (RCNM),Version 1.1

Report date: 11/06/2025  
 Case Description: Phase 1 Demolition

\*\*\*\* Receptor #1 \*\*\*\*

Description	Land Use	Baselines (dBA)		
		Daytime	Evening	Night
Residential Uses	Residential	55.0	55.0	55.0

Description	Impact Device	Usage (%)	Equipment			Estimated Shielding (dBA)
			Spec Lmax (dBA)	Actual Lmax (dBA)	Receptor Distance (feet)	
Concrete Saw	No	20	89.6	550.0	0.0	
Dozer	No	40	81.7	550.0	0.0	
Tractor	No	40	84.0	550.0	0.0	
Tractor	No	40	84.0	550.0	0.0	
Tractor	No	40	84.0	550.0	0.0	

Equipment	Results												
	Noise Limits (dBA)						Noise Limit Exceedance (dBA)						
	Calculated (dBA)		Day		Evening		Night		Day		Evening		Night
Lmax	Leq	Lmax	Leq	Lmax	Leq	Lmax	Leq	Lmax	Leq	Lmax	Leq	Lmax	Leq
Concrete Saw	68.8	61.8	N/A	N/A	N/A	N/A	N/A	N/A	N/A	N/A	N/A	N/A	N/A
N/A													
Dozer	60.8	56.9	N/A	N/A	N/A	N/A	N/A	N/A	N/A	N/A	N/A	N/A	N/A
N/A													
Tractor	63.2	59.2	N/A	N/A	N/A	N/A	N/A	N/A	N/A	N/A	N/A	N/A	N/A
N/A													
Tractor	63.2	59.2	N/A	N/A	N/A	N/A	N/A	N/A	N/A	N/A	N/A	N/A	N/A
N/A													
Tractor	63.2	59.2	N/A	N/A	N/A	N/A	N/A	N/A	N/A	N/A	N/A	N/A	N/A
N/A													
Total	68.8	66.5	N/A	N/A	N/A	N/A	N/A	N/A	N/A	N/A	N/A	N/A	N/A
N/A													

\*\*\*\* Receptor #2 \*\*\*\*

Description	Land Use	Baselines (dBA)		
		Daytime	Evening	Night
Commercial Uses	Commercial	55.0	55.0	55.0



Roadway Construction Noise Model (RCNM),Version 1.1

Report date: 11/06/2025  
 Case Description: Phase 1 Grading

\*\*\*\* Receptor #1 \*\*\*\*

Description	Land Use	Baselines (dBA)		
		Daytime	Evening	Night
Residential Uses	Residential	55.0	55.0	55.0

Description	Impact Device	Spec Usage (%)	Actual Lmax (dBA)	Receptor Lmax (dBA)	Estimated Distance (feet)	Shielding (dBA)
Grader	No	40	85.0	550.0	0.0	
Dozer	No	40	81.7	550.0	0.0	
Tractor	No	40	84.0	550.0	0.0	
Tractor	No	40	84.0	550.0	0.0	

Equipment Lmax Leq	Noise Limits (dBA)						Noise Limit Exceedance (dBA)							
	Calculated (dBA)		Day		Evening		Night		Day		Evening		Night	
	Lmax	Leq	Lmax	Leq	Lmax	Leq	Lmax	Leq	Lmax	Leq	Lmax	Leq	Lmax	Leq
Grader N/A	64.2	60.2	N/A	N/A	N/A	N/A	N/A	N/A	N/A	N/A	N/A	N/A	N/A	N/A
Dozer N/A	60.8	56.9	N/A	N/A	N/A	N/A	N/A	N/A	N/A	N/A	N/A	N/A	N/A	N/A
Tractor N/A	63.2	59.2	N/A	N/A	N/A	N/A	N/A	N/A	N/A	N/A	N/A	N/A	N/A	N/A
Tractor N/A	63.2	59.2	N/A	N/A	N/A	N/A	N/A	N/A	N/A	N/A	N/A	N/A	N/A	N/A
Total N/A	64.2	65.0	N/A	N/A	N/A	N/A	N/A	N/A	N/A	N/A	N/A	N/A	N/A	N/A

\*\*\*\* Receptor #2 \*\*\*\*

Description	Land Use	Baselines (dBA)		
		Daytime	Evening	Night
Commercial Uses	Commercial	55.0	55.0	55.0

Description	Impact Device	Spec Usage (%)	Actual Lmax (dBA)	Receptor Lmax (dBA)	Estimated Distance (feet)	Shielding (dBA)





























Roadway Construction Noise Model (RCNM), Version 1.1

Report date: 11/06/2025  
 Case Description: Phase 2a Coating

\*\*\*\* Receptor #1 \*\*\*\*

Baselines (dBA)

Description	Land Use	Daytime	Evening	Night
Residential Uses	Residential	55.0	55.0	55.0

Equipment

Description	Impact Device	Usage (%)	Spec Lmax (dBA)	Actual Receptor Lmax (dBA)	Estimated Distance (feet)	Shielding (dBA)
Compressor (air)	No	40		77.7	350.0	0.0

Results

Equipment Lmax Leq	Noise Limits (dBA)						Noise Limit Exceedance (dBA)							
	Calculated (dBA)		Day		Evening		Night		Day		Evening		Night	
	Lmax	Leq	Lmax	Leq	Lmax	Leq	Lmax	Leq	Lmax	Leq	Lmax	Leq	Lmax	Leq
Compressor (air)	60.8	56.8	N/A	N/A	N/A	N/A	N/A	N/A	N/A	N/A	N/A	N/A	N/A	N/A
Total	60.8	56.8	N/A	N/A	N/A	N/A	N/A	N/A	N/A	N/A	N/A	N/A	N/A	N/A

\*\*\*\* Receptor #2 \*\*\*\*

Baselines (dBA)

Description	Land Use	Daytime	Evening	Night
Commercial Uses	Commercial	55.0	55.0	55.0

Equipment

Description	Impact Device	Usage (%)	Spec Lmax (dBA)	Actual Receptor Lmax (dBA)	Estimated Distance (feet)	Shielding (dBA)
Compressor (air)	No	40		77.7	250.0	0.0

Results

Noise Limits (dBA)						Noise Limit Exceedance (dBA)					
--------------------	--	--	--	--	--	------------------------------	--	--	--	--	--





N/A

\*\*\*\* Receptor #2 \*\*\*\*

Description	Land Use	Baselines (dBA)		
		Daytime	Evening	Night
Commercial Uses	Commercial	55.0	55.0	55.0

Equipment

Description	Impact Device	Spec Usage (%)	Actual Lmax (dBA)	Receptor Lmax (dBA)	Estimated Distance (feet)	Shielding (dBA)
Excavator	No	40	80.7	250.0	0.0	
Grader	No	40	85.0	250.0	0.0	
Dozer	No	40	81.7	250.0	0.0	
Scraper	No	40	83.6	250.0	0.0	
Scraper	No	40	83.6	250.0	0.0	
Tractor	No	40	84.0	250.0	0.0	
Tractor	No	40	84.0	250.0	0.0	

Results

Equipment Lmax Leq	Noise Limits (dBA)						Noise Limit Exceedance (dBA)							
	Calculated (dBA)		Day		Evening		Night		Day		Evening		Night	
	Lmax	Leq	Lmax	Leq	Lmax	Leq	Lmax	Leq	Lmax	Leq	Lmax	Leq	Lmax	Leq
Excavator N/A	66.7	62.8	N/A	N/A	N/A	N/A	N/A	N/A	N/A	N/A	N/A	N/A	N/A	N/A
Excavator N/A	66.7	62.8	N/A	N/A	N/A	N/A	N/A	N/A	N/A	N/A	N/A	N/A	N/A	N/A
Grader N/A	71.0	67.0	N/A	N/A	N/A	N/A	N/A	N/A	N/A	N/A	N/A	N/A	N/A	N/A
Dozer N/A	67.7	63.7	N/A	N/A	N/A	N/A	N/A	N/A	N/A	N/A	N/A	N/A	N/A	N/A
Scraper N/A	69.6	65.6	N/A	N/A	N/A	N/A	N/A	N/A	N/A	N/A	N/A	N/A	N/A	N/A
Scraper N/A	69.6	65.6	N/A	N/A	N/A	N/A	N/A	N/A	N/A	N/A	N/A	N/A	N/A	N/A
Tractor N/A	70.0	66.0	N/A	N/A	N/A	N/A	N/A	N/A	N/A	N/A	N/A	N/A	N/A	N/A
Tractor N/A	70.0	66.0	N/A	N/A	N/A	N/A	N/A	N/A	N/A	N/A	N/A	N/A	N/A	N/A
Total	71.0	74.2	N/A	N/A	N/A	N/A	N/A	N/A	N/A	N/A	N/A	N/A	N/A	N/A

N/A

Roadway Construction Noise Model (RCNM),Version 1.1

Report date: 11/06/2025  
 Case Description: Phase 2a Paving

\*\*\*\* Receptor #1 \*\*\*\*

Baselines (dBA)

Description	Land Use	Daytime	Evening	Night
Residential Uses	Residential	55.0	55.0	55.0

Equipment

Description	Impact Device	Spec Usage (%)	Actual Lmax (dBA)	Receptor Lmax (dBA)	Estimated Distance (feet)	Shielding (dBA)
Paver	No	50	77.2	350.0	0.0	
Paver	No	50	77.2	350.0	0.0	
Paver	No	50	77.2	350.0	0.0	
Paver	No	50	77.2	350.0	0.0	
Roller	No	20	80.0	350.0	0.0	
Roller	No	20	80.0	350.0	0.0	

Results

Equipment Lmax Leq	Noise Limits (dBA)						Noise Limit Exceedance (dBA)							
	Calculated (dBA)		Day		Evening		Night		Day		Evening		Night	
	Lmax	Leq	Lmax	Leq	Lmax	Leq	Lmax	Leq	Lmax	Leq	Lmax	Leq	Lmax	Leq
Paver N/A	60.3	57.3	N/A	N/A	N/A	N/A	N/A	N/A	N/A	N/A	N/A	N/A	N/A	N/A
Paver N/A	60.3	57.3	N/A	N/A	N/A	N/A	N/A	N/A	N/A	N/A	N/A	N/A	N/A	N/A
Paver N/A	60.3	57.3	N/A	N/A	N/A	N/A	N/A	N/A	N/A	N/A	N/A	N/A	N/A	N/A
Paver N/A	60.3	57.3	N/A	N/A	N/A	N/A	N/A	N/A	N/A	N/A	N/A	N/A	N/A	N/A
Roller N/A	63.1	56.1	N/A	N/A	N/A	N/A	N/A	N/A	N/A	N/A	N/A	N/A	N/A	N/A
Roller N/A	63.1	56.1	N/A	N/A	N/A	N/A	N/A	N/A	N/A	N/A	N/A	N/A	N/A	N/A
Total	63.1	64.7	N/A	N/A	N/A	N/A	N/A	N/A	N/A	N/A	N/A	N/A	N/A	N/A

\*\*\*\* Receptor #2 \*\*\*\*

Baselines (dBA)

Description	Land Use	Daytime	Evening	Night
-------------	----------	---------	---------	-------





N/A														
Tractor	67.1	63.1	N/A	N/A	N/A	N/A	N/A	N/A	N/A	N/A	N/A	N/A	N/A	N/A
N/A														
Tractor	67.1	63.1	N/A	N/A	N/A	N/A	N/A	N/A	N/A	N/A	N/A	N/A	N/A	N/A
N/A														
Tractor	67.1	63.1	N/A	N/A	N/A	N/A	N/A	N/A	N/A	N/A	N/A	N/A	N/A	N/A
N/A														
Welder / Torch	57.1	53.1	N/A	N/A	N/A	N/A	N/A	N/A	N/A	N/A	N/A	N/A	N/A	N/A
N/A														
Paver	60.3	57.3	N/A	N/A	N/A	N/A	N/A	N/A	N/A	N/A	N/A	N/A	N/A	N/A
N/A														
Paver	60.3	57.3	N/A	N/A	N/A	N/A	N/A	N/A	N/A	N/A	N/A	N/A	N/A	N/A
N/A														
Paver	60.3	57.3	N/A	N/A	N/A	N/A	N/A	N/A	N/A	N/A	N/A	N/A	N/A	N/A
N/A														
Paver	60.3	57.3	N/A	N/A	N/A	N/A	N/A	N/A	N/A	N/A	N/A	N/A	N/A	N/A
N/A														
Roller	63.1	56.1	N/A	N/A	N/A	N/A	N/A	N/A	N/A	N/A	N/A	N/A	N/A	N/A
N/A														
Roller	63.1	56.1	N/A	N/A	N/A	N/A	N/A	N/A	N/A	N/A	N/A	N/A	N/A	N/A
N/A														
Compressor (air)	60.8	56.8	N/A	N/A	N/A	N/A	N/A	N/A	N/A	N/A	N/A	N/A	N/A	N/A
N/A														
Total	67.1	70.8	N/A	N/A	N/A	N/A	N/A	N/A	N/A	N/A	N/A	N/A	N/A	N/A
N/A														

\*\*\*\* Receptor #2 \*\*\*\*

Baselines (dBA)

Description	Land Use	Daytime	Evening	Night
Commercial Uses	Commercial	55.0	55.0	55.0

Equipment

Description	Impact	Usage Device	Usage (%)	Spec Lmax (dBA)	Actual Lmax (dBA)	Receptor Lmax (dBA)	Estimated Distance (feet)	Shielding (dBA)
Crane	No	16	80.6	250.0	0.0			
Pickup Truck	No	40	75.0	250.0	0.0			
Pickup Truck	No	40	75.0	250.0	0.0			
Pickup Truck	No	40	75.0	250.0	0.0			
Generator	No	50	80.6	250.0	0.0			
Tractor	No	40	84.0	250.0	0.0			
Tractor	No	40	84.0	250.0	0.0			
Tractor	No	40	84.0	250.0	0.0			
Welder / Torch	No	40	74.0	250.0	0.0			
Paver	No	50	77.2	250.0	0.0			
Paver	No	50	77.2	250.0	0.0			
Paver	No	50	77.2	250.0	0.0			
Paver	No	50	77.2	250.0	0.0			
Roller	No	20	80.0	250.0	0.0			
Roller	No	20	80.0	250.0	0.0			







Roadway Construction Noise Model (RCNM),Version 1.1

Report date: 11/06/2025  
 Case Description: Phase 2b Coating

\*\*\*\* Receptor #1 \*\*\*\*

Baselines (dBA)

Description	Land Use	Daytime	Evening	Night
Residential Uses	Residential	55.0	55.0	55.0

Equipment

Description	Impact Device	Spec Usage (%)	Actual Lmax (dBA)	Receptor Lmax (dBA)	Estimated Distance (feet)	Shielding (dBA)
Compressor (air)	No	40	77.7	420.0	0.0	

Results

Equipment Lmax Leq	Noise Limits (dBA)						Noise Limit Exceedance (dBA)							
	Calculated (dBA)		Day		Evening		Night		Day		Evening		Night	
	Lmax	Leq	Lmax	Leq	Lmax	Leq	Lmax	Leq	Lmax	Leq	Lmax	Leq	Lmax	Leq
Compressor (air)	59.2	55.2	N/A	N/A	N/A	N/A	N/A	N/A	N/A	N/A	N/A	N/A	N/A	N/A
Total	59.2	55.2	N/A	N/A	N/A	N/A	N/A	N/A	N/A	N/A	N/A	N/A	N/A	N/A

\*\*\*\* Receptor #2 \*\*\*\*

Baselines (dBA)

Description	Land Use	Daytime	Evening	Night
Commercial Uses	Commercial	55.0	55.0	55.0

Equipment

Description	Impact Device	Spec Usage (%)	Actual Lmax (dBA)	Receptor Lmax (dBA)	Estimated Distance (feet)	Shielding (dBA)
Compressor (air)	No	40	77.7	200.0	0.0	

Results

Noise Limits (dBA)						Noise Limit Exceedance (dBA)					
--------------------	--	--	--	--	--	------------------------------	--	--	--	--	--



Roadway Construction Noise Model (RCNM),Version 1.1

Report date: 11/06/2025  
 Case Description: Phase 2b Coating

\*\*\*\* Receptor #1 \*\*\*\*

Baselines (dBA)

Description	Land Use	Daytime	Evening	Night
Residential Uses	Residential	55.0	55.0	55.0

Equipment

Description	Impact Device	Spec Usage (%)	Actual Lmax (dBA)	Receptor Lmax (dBA)	Estimated Distance (feet)	Shielding (dBA)
Grader	No	40	85.0	420.0	0.0	
Dozer	No	40	81.7	420.0	0.0	
Tractor	No	40	84.0	420.0	0.0	
Tractor	No	40	84.0	420.0	0.0	

Results

Equipment Lmax Leq	Noise Limits (dBA)						Noise Limit Exceedance (dBA)							
	Calculated (dBA)		Day		Evening		Night		Day		Evening		Night	
	Lmax	Leq	Lmax	Leq	Lmax	Leq	Lmax	Leq	Lmax	Leq	Lmax	Leq	Lmax	Leq
Grader N/A	66.5	62.5	N/A	N/A	N/A	N/A	N/A	N/A	N/A	N/A	N/A	N/A	N/A	N/A
Dozer N/A	63.2	59.2	N/A	N/A	N/A	N/A	N/A	N/A	N/A	N/A	N/A	N/A	N/A	N/A
Tractor N/A	65.5	61.5	N/A	N/A	N/A	N/A	N/A	N/A	N/A	N/A	N/A	N/A	N/A	N/A
Tractor N/A	65.5	61.5	N/A	N/A	N/A	N/A	N/A	N/A	N/A	N/A	N/A	N/A	N/A	N/A
Total N/A	66.5	67.4	N/A	N/A	N/A	N/A	N/A	N/A	N/A	N/A	N/A	N/A	N/A	N/A

\*\*\*\* Receptor #2 \*\*\*\*

Baselines (dBA)

Description	Land Use	Daytime	Evening	Night
Commercial Uses	Commercial	55.0	55.0	55.0

Equipment

Spec Actual Receptor Estimated



Roadway Construction Noise Model (RCNM),Version 1.1

Report date: 11/06/2025  
 Case Description: Phase 2b Paving

\*\*\*\* Receptor #1 \*\*\*\*

Description	Land Use	Baselines (dBA)		
		Daytime	Evening	Night
Residential Uses	Residential	55.0	55.0	55.0

Description	Impact Device	Spec Usage (%)	Actual Lmax (dBA)	Receptor Lmax (dBA)	Estimated Distance (feet)	Shielding (dBA)
Concrete Mixer Truck	No	40	78.8	420.0	0.0	
Paver	No	50	77.2	420.0	0.0	
Paver	No	50	77.2	420.0	0.0	
Roller	No	20	80.0	420.0	0.0	
Roller	No	20	80.0	420.0	0.0	
Tractor	No	40	84.0	420.0	0.0	

Equipment	Noise Limits (dBA)						Noise Limit Exceedance (dBA)							
	Calculated (dBA)		Day		Evening		Night		Day		Evening		Night	
	Lmax	Leq	Lmax	Leq	Lmax	Leq	Lmax	Leq	Lmax	Leq	Lmax	Leq	Lmax	Leq
Concrete Mixer Truck	62.1	54.1	N/A	N/A	N/A	N/A	N/A	N/A	N/A	N/A	N/A	N/A	N/A	N/A
N/A	N/A													
Paver	56.5	52.5	N/A	N/A	N/A	N/A	N/A	N/A	N/A	N/A	N/A	N/A	N/A	N/A
N/A														
Paver	56.5	52.5	N/A	N/A	N/A	N/A	N/A	N/A	N/A	N/A	N/A	N/A	N/A	N/A
N/A														
Roller	62.1	59.1	N/A	N/A	N/A	N/A	N/A	N/A	N/A	N/A	N/A	N/A	N/A	N/A
N/A														
Roller	65.5	61.5	N/A	N/A	N/A	N/A	N/A	N/A	N/A	N/A	N/A	N/A	N/A	N/A
N/A														
Tractor	55.5	51.5	N/A	N/A	N/A	N/A	N/A	N/A	N/A	N/A	N/A	N/A	N/A	N/A
N/A														
Total	65.5	65.2	N/A	N/A	N/A	N/A	N/A	N/A	N/A	N/A	N/A	N/A	N/A	N/A
N/A														

\*\*\*\* Receptor #2 \*\*\*\*

Description	Land Use	Baselines (dBA)		
		Daytime	Evening	Night





Welder / Torch N/A N/A	55.5	51.5	N/A	N/A	N/A	N/A	N/A	N/A	N/A	N/A	N/A	N/A	N/A
Welder / Torch N/A N/A	55.5	51.5	N/A	N/A	N/A	N/A	N/A	N/A	N/A	N/A	N/A	N/A	N/A
Welder / Torch N/A N/A	55.5	51.5	N/A	N/A	N/A	N/A	N/A	N/A	N/A	N/A	N/A	N/A	N/A
Concrete Mixer Truck N/A N/A	60.3	56.3	N/A	N/A	N/A	N/A	N/A	N/A	N/A	N/A	N/A	N/A	N/A
Paver N/A	58.7	55.7	N/A	N/A	N/A	N/A	N/A	N/A	N/A	N/A	N/A	N/A	N/A
Paver N/A	58.7	55.7	N/A	N/A	N/A	N/A	N/A	N/A	N/A	N/A	N/A	N/A	N/A
Roller N/A	61.5	54.5	N/A	N/A	N/A	N/A	N/A	N/A	N/A	N/A	N/A	N/A	N/A
Roller N/A	61.5	54.5	N/A	N/A	N/A	N/A	N/A	N/A	N/A	N/A	N/A	N/A	N/A
Tractor N/A	65.5	61.5	N/A	N/A	N/A	N/A	N/A	N/A	N/A	N/A	N/A	N/A	N/A
Compressor (air) N/A N/A	59.2	55.2	N/A	N/A	N/A	N/A	N/A	N/A	N/A	N/A	N/A	N/A	N/A
Total	65.5	68.3	N/A	N/A	N/A	N/A	N/A	N/A	N/A	N/A	N/A	N/A	N/A

\*\*\*\* Receptor #2 \*\*\*\*

Baselines (dBA)

Description	Land Use	Daytime	Evening	Night
Commercial Uses	Commercial	55.0	55.0	55.0

Equipment

Description	Impact	Spec Usage Device (%)	Actual Lmax (dBA)	Receptor Lmax (dBA)	Estimated Distance (feet)	Shielding (dBA)
Crane	No	16	80.6	200.0	0.0	
Pickup Truck	No	40	75.0	200.0	0.0	
Pickup Truck	No	40	75.0	200.0	0.0	
Generator	No	50	80.6	200.0	0.0	
Tractor	No	40	84.0	200.0	0.0	
Welder / Torch	No	40	74.0	200.0	0.0	
Welder / Torch	No	40	74.0	200.0	0.0	
Welder / Torch	No	40	74.0	200.0	0.0	
Concrete Mixer Truck	No	40	78.8	200.0	0.0	
Paver	No	50	77.2	200.0	0.0	
Paver	No	50	77.2	200.0	0.0	
Roller	No	20	80.0	200.0	0.0	
Roller	No	20	80.0	200.0	0.0	
Tractor	No	40	84.0	200.0	0.0	
Compressor (air)	No	40	77.7	200.0	0.0	

Results







Roadway Construction Noise Model (RCNM),Version 1.1

Report date: 11/06/2025  
 Case Description: Phase 2c Coating

\*\*\*\* Receptor #1 \*\*\*\*

Baselines (dBA)

Description	Land Use	Daytime	Evening	Night
Residential Uses	Residential	55.0	55.0	55.0

Equipment

Description	Impact Device	Spec Usage (%)	Actual Lmax (dBA)	Receptor Lmax (dBA)	Estimated Distance (feet)	Shielding (dBA)
Compressor (air)	No	40	77.7	700.0	0.0	

Results

Equipment Lmax Leq	Noise Limits (dBA)						Noise Limit Exceedance (dBA)							
	Calculated (dBA)		Day		Evening		Night		Day		Evening		Night	
	Lmax	Leq	Lmax	Leq	Lmax	Leq	Lmax	Leq	Lmax	Leq	Lmax	Leq	Lmax	Leq
Compressor (air)	54.7	50.8	N/A	N/A	N/A	N/A	N/A	N/A	N/A	N/A	N/A	N/A	N/A	N/A
Total	54.7	50.8	N/A	N/A	N/A	N/A	N/A	N/A	N/A	N/A	N/A	N/A	N/A	N/A

\*\*\*\* Receptor #2 \*\*\*\*

Baselines (dBA)

Description	Land Use	Daytime	Evening	Night
Commercial Uses	Commercial	55.0	55.0	55.0

Equipment

Description	Impact Device	Spec Usage (%)	Actual Lmax (dBA)	Receptor Lmax (dBA)	Estimated Distance (feet)	Shielding (dBA)
Compressor (air)	No	40	77.7	400.0	0.0	

Results

Noise Limits (dBA)						Noise Limit Exceedance (dBA)					
--------------------	--	--	--	--	--	------------------------------	--	--	--	--	--



Roadway Construction Noise Model (RCNM),Version 1.1

Report date: 11/06/2025  
 Case Description: Phase 2c Demolition

\*\*\*\* Receptor #1 \*\*\*\*

Description	Land Use	Baselines (dBA)		
		Daytime	Evening	Night
Residential Uses	Residential	55.0	55.0	55.0

Description	Impact Device	Spec Usage (%)	Equipment			Shielding (dBA)
			Actual Lmax (dBA)	Receptor Lmax (dBA)	Estimated Distance (feet)	
Concrete Saw	No	20	89.6	700.0	0.0	
Dozer	No	40	81.7	700.0	0.0	
Tractor	No	40	84.0	700.0	0.0	
Tractor	No	40	84.0	700.0	0.0	
Tractor	No	40	84.0	700.0	0.0	

Equipment	Noise Limits (dBA)						Noise Limit Exceedance (dBA)							
	Calculated (dBA)		Day		Evening		Night		Day		Evening		Night	
	Lmax	Leq	Lmax	Leq	Lmax	Leq	Lmax	Leq	Lmax	Leq	Lmax	Leq	Lmax	Leq
Concrete Saw	66.7	59.7	N/A	N/A	N/A	N/A	N/A	N/A	N/A	N/A	N/A	N/A	N/A	N/A
Dozer	58.7	54.8	N/A	N/A	N/A	N/A	N/A	N/A	N/A	N/A	N/A	N/A	N/A	N/A
Tractor	61.1	57.1	N/A	N/A	N/A	N/A	N/A	N/A	N/A	N/A	N/A	N/A	N/A	N/A
Tractor	61.1	57.1	N/A	N/A	N/A	N/A	N/A	N/A	N/A	N/A	N/A	N/A	N/A	N/A
Tractor	61.1	57.1	N/A	N/A	N/A	N/A	N/A	N/A	N/A	N/A	N/A	N/A	N/A	N/A
Total	66.7	64.4	N/A	N/A	N/A	N/A	N/A	N/A	N/A	N/A	N/A	N/A	N/A	N/A

\*\*\*\* Receptor #2 \*\*\*\*

Description	Land Use	Baselines (dBA)		
		Daytime	Evening	Night
Commercial Uses	Commercial	55.0	55.0	55.0



Roadway Construction Noise Model (RCNM),Version 1.1

Report date: 11/06/2025  
 Case Description: Phase 2c Coating

\*\*\*\* Receptor #1 \*\*\*\*

Description	Land Use	Baselines (dBA)		
		Daytime	Evening	Night
Residential Uses	Residential	55.0	55.0	55.0

Description	Impact Device	Spec Usage (%)	Actual Lmax (dBA)	Receptor Lmax (dBA)	Estimated Distance (feet)	Shielding (dBA)
Paver	No	50	77.2	700.0	0.0	
Paver	No	50	77.2	700.0	0.0	
Roller	No	20	80.0	700.0	0.0	
Roller	No	20	80.0	700.0	0.0	
Tractor	No	40	84.0	700.0	0.0	

Results

Equipment Lmax Leq	Noise Limits (dBA)						Noise Limit Exceedance (dBA)							
	Calculated (dBA)		Day		Evening		Night		Day		Evening		Night	
	Lmax	Leq	Lmax	Leq	Lmax	Leq	Lmax	Leq	Lmax	Leq	Lmax	Leq	Lmax	Leq
Paver N/A	54.7	50.8	N/A	N/A	N/A	N/A	N/A	N/A	N/A	N/A	N/A	N/A	N/A	N/A
Paver N/A	55.9	51.9	N/A	N/A	N/A	N/A	N/A	N/A	N/A	N/A	N/A	N/A	N/A	N/A
Roller N/A	55.9	51.9	N/A	N/A	N/A	N/A	N/A	N/A	N/A	N/A	N/A	N/A	N/A	N/A
Roller N/A	55.9	51.9	N/A	N/A	N/A	N/A	N/A	N/A	N/A	N/A	N/A	N/A	N/A	N/A
Tractor N/A	54.3	51.3	N/A	N/A	N/A	N/A	N/A	N/A	N/A	N/A	N/A	N/A	N/A	N/A
Total	54.7	50.8	N/A	N/A	N/A	N/A	N/A	N/A	N/A	N/A	N/A	N/A	N/A	N/A

\*\*\*\* Receptor #2 \*\*\*\*

Description	Land Use	Baselines (dBA)		
		Daytime	Evening	Night
Commercial Uses	Commercial	55.0	55.0	55.0





Welder / Torch N/A N/A	51.1	47.1	N/A	N/A	N/A	N/A	N/A	N/A	N/A	N/A	N/A	N/A	N/A
Welder / Torch N/A N/A	51.1	47.1	N/A	N/A	N/A	N/A	N/A	N/A	N/A	N/A	N/A	N/A	N/A
Welder / Torch N/A N/A	51.1	47.1	N/A	N/A	N/A	N/A	N/A	N/A	N/A	N/A	N/A	N/A	N/A
Concrete Mixer Truck N/A N/A	55.9	51.9	N/A	N/A	N/A	N/A	N/A	N/A	N/A	N/A	N/A	N/A	N/A
Paver N/A	54.3	51.3	N/A	N/A	N/A	N/A	N/A	N/A	N/A	N/A	N/A	N/A	N/A
Paver N/A	54.3	51.3	N/A	N/A	N/A	N/A	N/A	N/A	N/A	N/A	N/A	N/A	N/A
Roller N/A	57.1	50.1	N/A	N/A	N/A	N/A	N/A	N/A	N/A	N/A	N/A	N/A	N/A
Roller N/A	57.1	50.1	N/A	N/A	N/A	N/A	N/A	N/A	N/A	N/A	N/A	N/A	N/A
Tractor N/A	61.1	57.1	N/A	N/A	N/A	N/A	N/A	N/A	N/A	N/A	N/A	N/A	N/A
Compressor (air) N/A N/A	54.7	50.8	N/A	N/A	N/A	N/A	N/A	N/A	N/A	N/A	N/A	N/A	N/A
Total	61.1	63.9	N/A	N/A	N/A	N/A	N/A	N/A	N/A	N/A	N/A	N/A	N/A

\*\*\*\* Receptor #2 \*\*\*\*

Baselines (dBA)

Description	Land Use	Daytime	Evening	Night
Commercial Uses	Commercial	55.0	55.0	55.0

Equipment

Description	Impact	Spec Device	Usage (%)	Actual Lmax (dBA)	Receptor Lmax (dBA)	Estimated Distance (feet)	Shielding (dBA)
Crane	No	16		80.6	400.0	0.0	
Pickup Truck	No	40		75.0	400.0	0.0	
Pickup Truck	No	40		75.0	400.0	0.0	
Generator	No	50		80.6	400.0	0.0	
Tractor	No	40	84.0		400.0	0.0	
Welder / Torch	No	40		74.0	400.0	0.0	
Welder / Torch	No	40		74.0	400.0	0.0	
Welder / Torch	No	40		74.0	400.0	0.0	
Concrete Mixer Truck	No	40		78.8	400.0	0.0	
Paver	No	50		77.2	400.0	0.0	
Paver	No	50		77.2	400.0	0.0	
Roller	No	20		80.0	400.0	0.0	
Roller	No	20		80.0	400.0	0.0	
Tractor	No	40	84.0		400.0	0.0	
Compressor (air)	No	40		77.7	400.0	0.0	

Results

-----



Roadway Construction Noise Model (RCNM),Version 1.1

Report date: 11/06/2025  
 Case Description: Phase 3 Building Construction

\*\*\*\* Receptor #1 \*\*\*\*

Description	Land Use	Baselines (dBA)		
		Daytime	Evening	Night
Residential Uses	Residential	55.0	55.0	55.0

Description	Impact Device	Usage (%)	Equipment			Estimated Shielding (dBA)
			Spec Lmax (dBA)	Actual Lmax (dBA)	Receptor Distance (feet)	
Crane	No	16	80.6	750.0	0.0	
Pickup Truck	No	40	75.0	750.0	0.0	
Pickup Truck	No	40	75.0	750.0	0.0	
Tractor	No	40	84.0	750.0	0.0	
Tractor	No	40	84.0	750.0	0.0	

Equipment	Noise Limits (dBA)						Noise Limit Exceedance (dBA)							
	Calculated (dBA)		Day		Evening		Night		Day		Evening		Night	
	Lmax	Leq	Lmax	Leq	Lmax	Leq	Lmax	Leq	Lmax	Leq	Lmax	Leq	Lmax	Leq
Crane	57.0	49.1	N/A	N/A	N/A	N/A	N/A	N/A	N/A	N/A	N/A	N/A	N/A	N/A
N/A														
Pickup Truck	51.5	47.5	N/A	N/A	N/A	N/A	N/A	N/A	N/A	N/A	N/A	N/A	N/A	N/A
N/A														
Pickup Truck	51.5	47.5	N/A	N/A	N/A	N/A	N/A	N/A	N/A	N/A	N/A	N/A	N/A	N/A
N/A														
Tractor	60.5	56.5	N/A	N/A	N/A	N/A	N/A	N/A	N/A	N/A	N/A	N/A	N/A	N/A
N/A														
Tractor	60.5	56.5	N/A	N/A	N/A	N/A	N/A	N/A	N/A	N/A	N/A	N/A	N/A	N/A
N/A														
Total	60.5	60.4	N/A	N/A	N/A	N/A	N/A	N/A	N/A	N/A	N/A	N/A	N/A	N/A
N/A														

\*\*\*\* Receptor #2 \*\*\*\*

Description	Land Use	Baselines (dBA)		
		Daytime	Evening	Night
Commercial Uses	Commercial	55.0	55.0	55.0



Roadway Construction Noise Model (RCNM), Version 1.1

Report date: 11/06/2025  
 Case Description: Phase 3 Paving

\*\*\*\* Receptor #1 \*\*\*\*

Baselines (dBA)

Description	Land Use	Daytime	Evening	Night
Residential Uses	Residential	55.0	55.0	55.0

Equipment

Description	Impact Device	Spec Usage (%)	Actual Lmax (dBA)	Receptor Lmax (dBA)	Estimated Distance (feet)	Shielding (dBA)
Compressor (air)	No	40	77.7	750.0	0.0	

Results

Equipment Lmax Leq	Noise Limits (dBA)						Noise Limit Exceedance (dBA)							
	Calculated (dBA)		Day		Evening		Night		Day		Evening		Night	
	Lmax	Leq	Lmax	Leq	Lmax	Leq	Lmax	Leq	Lmax	Leq	Lmax	Leq	Lmax	Leq
Compressor (air)	54.1	50.2	N/A	N/A	N/A	N/A	N/A	N/A	N/A	N/A	N/A	N/A	N/A	N/A
Total	54.1	50.2	N/A	N/A	N/A	N/A	N/A	N/A	N/A	N/A	N/A	N/A	N/A	N/A

\*\*\*\* Receptor #2 \*\*\*\*

Baselines (dBA)

Description	Land Use	Daytime	Evening	Night
Commercial Uses	Commercial	55.0	55.0	55.0

Equipment

Description	Impact Device	Spec Usage (%)	Actual Lmax (dBA)	Receptor Lmax (dBA)	Estimated Distance (feet)	Shielding (dBA)
Compressor (air)	No	40	77.7	150.0	0.0	

Results

Noise Limits (dBA)						Noise Limit Exceedance (dBA)					
--------------------	--	--	--	--	--	------------------------------	--	--	--	--	--



Roadway Construction Noise Model (RCNM),Version 1.1

Report date: 11/06/2025  
 Case Description: Phase 3 Building Construction

\*\*\*\* Receptor #1 \*\*\*\*

Baselines (dBA)

Description	Land Use	Daytime	Evening	Night
Residential Uses	Residential	55.0	55.0	55.0

Equipment

Description	Impact Device	Spec Usage (%)	Actual Lmax (dBA)	Receptor Lmax (dBA)	Estimated Distance (feet)	Shielding (dBA)
Concrete Mixer Truck	No	40	40	78.8	750.0	0.0
Concrete Mixer Truck	No	40	40	78.8	750.0	0.0
Concrete Mixer Truck	No	40	40	78.8	750.0	0.0
Concrete Mixer Truck	No	40	40	78.8	750.0	0.0
Paver	No	50	77.2	750.0	0.0	
Roller	No	20	80.0	750.0	0.0	
Tractor	No	40	84.0	750.0	0.0	

Results

Equipment Lmax Leq	Noise Limits (dBA)						Noise Limit Exceedance (dBA)							
	Calculated (dBA)		Day		Evening		Night		Day		Evening		Night	
	Lmax	Leq	Lmax	Leq	Lmax	Leq	Lmax	Leq	Lmax	Leq	Lmax	Leq	Lmax	Leq
Concrete Mixer Truck N/A N/A	55.3	51.3	N/A	N/A	N/A	N/A	N/A	N/A	N/A	N/A	N/A	N/A	N/A	N/A
Concrete Mixer Truck N/A N/A	55.3	51.3	N/A	N/A	N/A	N/A	N/A	N/A	N/A	N/A	N/A	N/A	N/A	N/A
Concrete Mixer Truck N/A N/A	55.3	51.3	N/A	N/A	N/A	N/A	N/A	N/A	N/A	N/A	N/A	N/A	N/A	N/A
Concrete Mixer Truck N/A N/A	55.3	51.3	N/A	N/A	N/A	N/A	N/A	N/A	N/A	N/A	N/A	N/A	N/A	N/A
Paver N/A	53.7	50.7	N/A	N/A	N/A	N/A	N/A	N/A	N/A	N/A	N/A	N/A	N/A	N/A
Roller N/A	56.5	49.5	N/A	N/A	N/A	N/A	N/A	N/A	N/A	N/A	N/A	N/A	N/A	N/A
Tractor N/A	60.5	56.5	N/A	N/A	N/A	N/A	N/A	N/A	N/A	N/A	N/A	N/A	N/A	N/A
Total N/A	60.5	60.8	N/A	N/A	N/A	N/A	N/A	N/A	N/A	N/A	N/A	N/A	N/A	N/A

\*\*\*\* Receptor #2 \*\*\*\*









Roadway Construction Noise Model (RCNM), Version

1.1

Report date: 12/03/2025  
 Case Description: On-Site [Phase 1 Linear, Grading & Excavation]

\*\*\*\* Receptor #1 \*\*\*\*

Description	Land Use	Baselines (dBA)			
		Daytime	Evening	Night	
Civic Center	Commercial	55.0	55.0	55.0	
Equipment					
Estimated		Spec	Actual	Receptor	
Shielding	Impact Usage	Lmax	Lmax	Distance	
Description (dBA)	Device (%)	(dBA)	(dBA)	(feet)	
Tractor 0.0	No 40	84.0		250.0	
Excavator 0.0	No 40		80.7	250.0	
Excavator 0.0	No 40		80.7	250.0	
Excavator 0.0	No 40		80.7	250.0	
Grader 0.0	No 40	85.0		250.0	
Roller 0.0	No 20		80.0	250.0	
Roller 0.0	No 20		80.0	250.0	
Front End Loader 0.0	No 40		79.1	250.0	
Scraper 0.0	No 40		83.6	250.0	
Scraper 0.0	No 40		83.6	250.0	
Tractor 0.0	No 40	84.0		250.0	
Tractor 0.0	No 40	84.0		250.0	

Results

(dBA)	Noise Limit	Exceedance (dBA)	Noise Limits
-----	-----	-----	-----



Roadway Construction Noise Model (RCNM), Version

1.1

Report date: 12/03/2025  
 Case Description: On-Site [Phase 2a Grading]

\*\*\*\* Receptor #2 \*\*\*\*

Description	Land Use	Daytime	Baselines (dBA)	
			Evening	Night
Civic Center	Commercial	55.0	55.0	55.0

Estimated Shielding Description	Impact Device	Usage (%)	Equipment		Receptor Distance (feet)	(dBA)
			Spec (dBA)	Actual (dBA)		
-						
Excavator 0.0	No	40		80.7	250.0	
Excavator 0.0	No	40		80.7	250.0	
Grader 0.0	No	40	85.0		250.0	
Dozer 0.0	No	40		81.7	250.0	
Scraper 0.0	No	40		83.6	250.0	
Scraper 0.0	No	40		83.6	250.0	
Tractor 0.0	No	40	84.0		250.0	
Tractor 0.0	No	40	84.0		250.0	

Results

(dBA)	Noise Limit Exceedance (dBA)		Noise Limits			
	Day	Evening	Day Night	Evening		
	Calculated (dBA)					
Equipment	Lmax	Leq	Lmax	Leq	Lmax	Leq
Night						
Lmax						
Leq						





N/A	N/A	Total	73.0	73.8	N/A	N/A	N/A	N/A
		N/A	N/A	N/A	N/A	N/A	N/A	N/A









## TRAFFIC NOISE LEVELS AND NOISE CONTOURS

**Project Number:** 207556  
**Project Name:** Thousand Oaks Downtown Specific Plan  
**Scenario:** Existing

### Background Information

Model Description: FHWA Highway Noise Prediction Model (FHWA-RD-77-108) with California Vehicle Noise (CALVENO) Emission Levels.  
 Source of Traffic Volumes: Michael Baker International  
 Community Noise Descriptor:  $L_{dn}$ : \_\_\_\_\_ CNEL:   X  

Assumed 24-Hour Traffic Distribution:	Day	Evening	Night
Total ADT Volumes	77.50%	12.90%	9.60%
Medium-Duty Trucks	84.80%	4.90%	10.30%
Heavy-Duty Trucks	86.50%	2.70%	10.80%

Analysis Condition Roadway, Segment	Lanes	Median Width	ADT Volume	Design Speed (mph)	Alpha Factor	Vehicle Mix		Distance from Centerline of Roadway				
						Medium Trucks	Heavy Trucks	CNEL at 100 Feet	70 CNEL	65 CNEL	60 CNEL	55 CNEL
1 Thousand Oaks West of Dallas Drive	4	15	18,500	35	0.5	1.8%	0.7%	61.7	-	61	131	281
2 Thousand Oaks East of Dallas Drive	4	15	18,000	35	0.5	1.8%	0.7%	61.6	-	59	128	276
3 Dallas Drive	3	13	1,800	25	0.5	1.8%	0.7%	49.0	-	-	-	-

"-" = contour is located within the roadway right-of-way.

## TRAFFIC NOISE LEVELS AND NOISE CONTOURS

**Project Number:** 200855  
**Project Name:** Lost Canyons  
**Scenario:** Existing+Project

### Background Information

Model Description: FHWA Highway Noise Prediction Model (FHWA-RD-77-108) with California Vehicle Noise (CALVENO) Emission Levels.  
 Source of Traffic Volumes: Michael Baker International  
 Community Noise Descriptor:  $L_{dn}$ : \_\_\_\_\_ CNEL:   X  

Assumed 24-Hour Traffic Distribution:	Day	Evening	Night
Total ADT Volumes	77.50%	12.90%	9.60%
Medium-Duty Trucks	84.80%	4.90%	10.30%
Heavy-Duty Trucks	86.50%	2.70%	10.80%

Analysis Condition Roadway, Segment	Lanes	Median Width	ADT Volume	Design Speed (mph)	Alpha Factor	Vehicle Mix		Distance from Centerline of Roadway				
						Medium Trucks	Heavy Trucks	CNEL at 100 Feet	70 CNEL	65 CNEL	60 CNEL	55 CNEL
1 Thousand Oaks West of Dallas Drive	4	15	20,494	35	0.5	1.8%	0.7%	62.2	-	65	140	301
2 Thousand Oaks East of Dallas Drive	4	15	20,935	35	0.5	1.8%	0.7%	62.3	-	66	142	305
3 Dallas Drive	3	13	889	25	0.5	1.8%	0.7%	45.9	-	-	-	-

"-" = contour is located within the roadway right-of-way.

**TRAFFIC NOISE LEVELS AND NOISE CONTOURS**

**Project Number:** 200855  
**Project Name:** Lost Canyons  
**Scenario:** Future 2050

**Background Information**

Model Description: FHWA Highway Noise Prediction Model (FHWA-RD-77-108) with California Vehicle Noise (CALVENO) Emission Levels.  
 Source of Traffic Volumes: Michael Baker International  
 Community Noise Descriptor: L<sub>dn</sub>: \_\_\_\_\_ CNEL:  X

Assumed 24-Hour Traffic Distribution:	Day	Evening	Night
Total ADT Volumes	77.50%	12.90%	9.60%
Medium-Duty Trucks	84.80%	4.90%	10.30%
Heavy-Duty Trucks	86.50%	2.70%	10.80%

Analysis Condition Roadway, Segment	Lanes	Median Width	ADT Volume	Design Speed (mph)	Alpha Factor	Vehicle Mix		CNEL at 100 Feet	Distance from Centerline of Roadway			
						Medium Trucks	Heavy Trucks		70 CNEL	65 CNEL	60 CNEL	55 CNEL
1 Thousand Oaks West of Dallas Drive	4	15	19,800	35	0.5	1.8%	0.7%	62.0	-	63	137	294
2 Thousand Oaks East of Dallas Drive	4	15	19,300	35	0.5	1.8%	0.7%	61.9	-	62	134	289
3 Dallas Drive	3	13	1,800	25	0.5	1.8%	0.7%	49.0	-	-	-	-

"-" = contour is located within the roadway right-of-way.

## TRAFFIC NOISE LEVELS AND NOISE CONTOURS

**Project Number:** 200855  
**Project Name:** Lost Canyons  
**Scenario:** Future with Project

### Background Information

Model Description: FHWA Highway Noise Prediction Model (FHWA-RD-77-108) with California Vehicle Noise (CALVENO) Emission Levels.  
 Source of Traffic Volumes: Michael Baker International  
 Community Noise Descriptor:  $L_{dn}$ : \_\_\_\_\_ CNEL:  X

Assumed 24-Hour Traffic Distribution:	Day	Evening	Night
Total ADT Volumes	77.50%	12.90%	9.60%
Medium-Duty Trucks	84.80%	4.90%	10.30%
Heavy-Duty Trucks	86.50%	2.70%	10.80%

Analysis Condition Roadway, Segment	Lanes	Median Width	ADT Volume	Design Speed (mph)	Alpha Factor	Vehicle Mix		Distance from Centerline of Roadway				
						Medium Trucks	Heavy Trucks	CNEL at 100 Feet	70 CNEL	65 CNEL	60 CNEL	55 CNEL
1 Thousand Oaks West of Dallas Drive	4	15	21,974	35	0.5	1.8%	0.7%	62.5	-	68	146	315
2 Thousand Oaks East of Dallas Drive	4	15	22,235	35	0.5	1.8%	0.7%	62.5	-	68	148	318
3 Dallas Drive	3	13	889	25	0.5	1.8%	0.7%	45.9	-	-	-	-

"-" = contour is located within the roadway right-of-way.