



STANISLAUS COUNTY CLERK  
CEQA FILING COVER SHEET

Mail to:

Name: Christy McKinnon

Address: 3800 Cornucopia Way, Suite C

City, State, Zip Modesto, CA 95358-9494

50-2025-142

**FILED**

August 13, 2025

DONNA LINDER

STANISLAUS COUNTY  
CLERK-RECORDER

By: Matthew Ferris  
Deputy Clerk

THIS SPACE FOR CLERK'S USE ONLY

Complete and attach this form to each CEQA Notice filed with the County Clerk

TYPE OR PRINT CLEARLY

Project Title

Delta-Mendota Subbasin Interconnected Surface Water Monitoring Wells.

Check Document being Filed:

- Environmental Impact Report (EIR)
- Mitigated Negative Declaration (MND) or Negative Declaration (ND)
- Notice of Exemption (NOE)
- Other (Please fill in type):

FILED IN THE OFFICE OF THE STANISLAUS	
COUNTY CLERK ON <u>8/13/2025</u>	
Posted <u>8/13/2025</u>	Removed <u>9/17/2025</u>
Returned to agency on _____	
DEPUTY <u>M F</u>	

Filing fees are due at the time a Notice of Determination/Exemption is filed with our office. For more information on filing fees and No Effect Determinations, please refer to California Code of Regulations, Title 14, section 753.5.

# A NOTICE OF EXEMPTION

---

**TO:** X Office of Planning and Research  
1400 Tenth Street, Room 121  
Sacramento, CA 95814

**FROM:** Stanislaus County  
1021 I Street  
Modesto, CA 95354

Office of the County Clerk-Recorder  
Stanislaus County  
1021 I Street  
Modesto, CA 95354

**Project Title:**

Delta-Mendota Subbasin Interconnected Surface Water Monitoring Wells.

**Project Location - Specific:**

Latitude: 37.6311749; Longitude: -121.2276421

**Project Location – City:**

Vernalis, CA

**Project Location – County**

Stanislaus County

**Description of Nature, Purpose, and Beneficiaries of Project:**

Delta-Mendota GSAs (Attachment 1) is implementing Groundwater Sustainability Plan (GSP) actions, submitted in 2020, to achieve and maintain groundwater sustainability within the Delta-Mendota Subbasin in accordance with the 2014 Sustainable Groundwater Management Act. This NOE covers the construction and monitoring related activities for installing the monitoring well in Vernalis along the San Joaquin River to fill substantial data gaps related to better understanding surface water-groundwater interactions to develop sustainability criteria.

**Name of Public Agency Approving Project:**

Stanislaus County.

**Name of Person or Agency Carrying Out Project:**

Stanislaus County.

**Exempt Status: (Check one)**

- Ministerial (Sec. 21080(b)(1); 15268);
- Declared Emergency (Sec. 21080(b)(3); 15269(a));
- Emergency Project (Sec. 21080(b)(4); 15269(b)(c));
- Categorical Exemption. State type and section number: Class 4, Section 15304, Title 14 CCR; Class 6, Section 15306, Title 14 CCR; and Class 1, Section 15301, Title 14 CCR.
- Statutory Exemptions. State code number:

**Reasons why project is exempt:**

The construction activities consist of nonsignificant impacts to the condition of the land. And the proposed project consists of basic data collection and resource evaluation activities that do not result in a significant impact to environmental resources. Attachment 2 includes more information regarding this determination.

**Lead Agency Contact Person:**

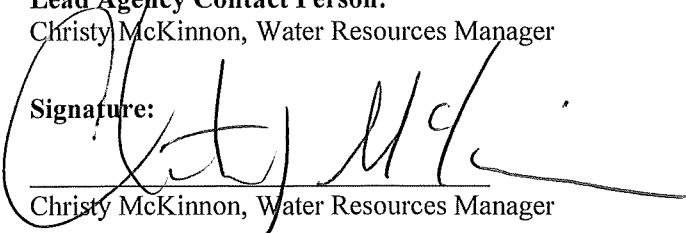
Christy McKinnon, Water Resources Manager

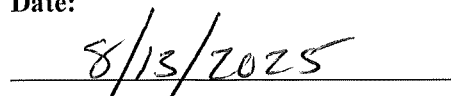
**Area Code/Telephone/Extension:**

(209) 525-6818

**Signature:**

**Date:**

  
Christy McKinnon, Water Resources Manager

  
8/13/2025

Signed by Lead Agency

Date received for filing at OPR:

San Luis Delta-Mendota Water Authority (SLDMWA)  
Delta-Mendota Subbasin  
Delta-Mendota GSA Groundwater Sustainability Plan Implementation Project  
Notice of Exemption – For Stanislaus County Interconnected Surface Water Monitoring Well

---

## SAN LUIS & DELTA-MENDOTA WATER AUTHORITY

[HOME](#) [MEETINGS](#) [OPERATIONS](#) [LEARN MORE](#) [ABOUT SLDMWA](#) [MEDIA & PRESS](#) [PROJECTS](#) [CONTACT](#)

### GROUNDWATER

SLDMWA is working collaboratively with its Member Agencies and local interests to meet Sustainable Groundwater Management guidelines and to strengthen water supply reliability in the Delta-Mendota Service Area.

The Water Authority is working collaboratively with GSAs and member agencies to successfully implement SGMA in the Delta-Mendota subbasin and providing facilitation and coordination services for neighboring subbasins.

Delta Mendota Subbasin

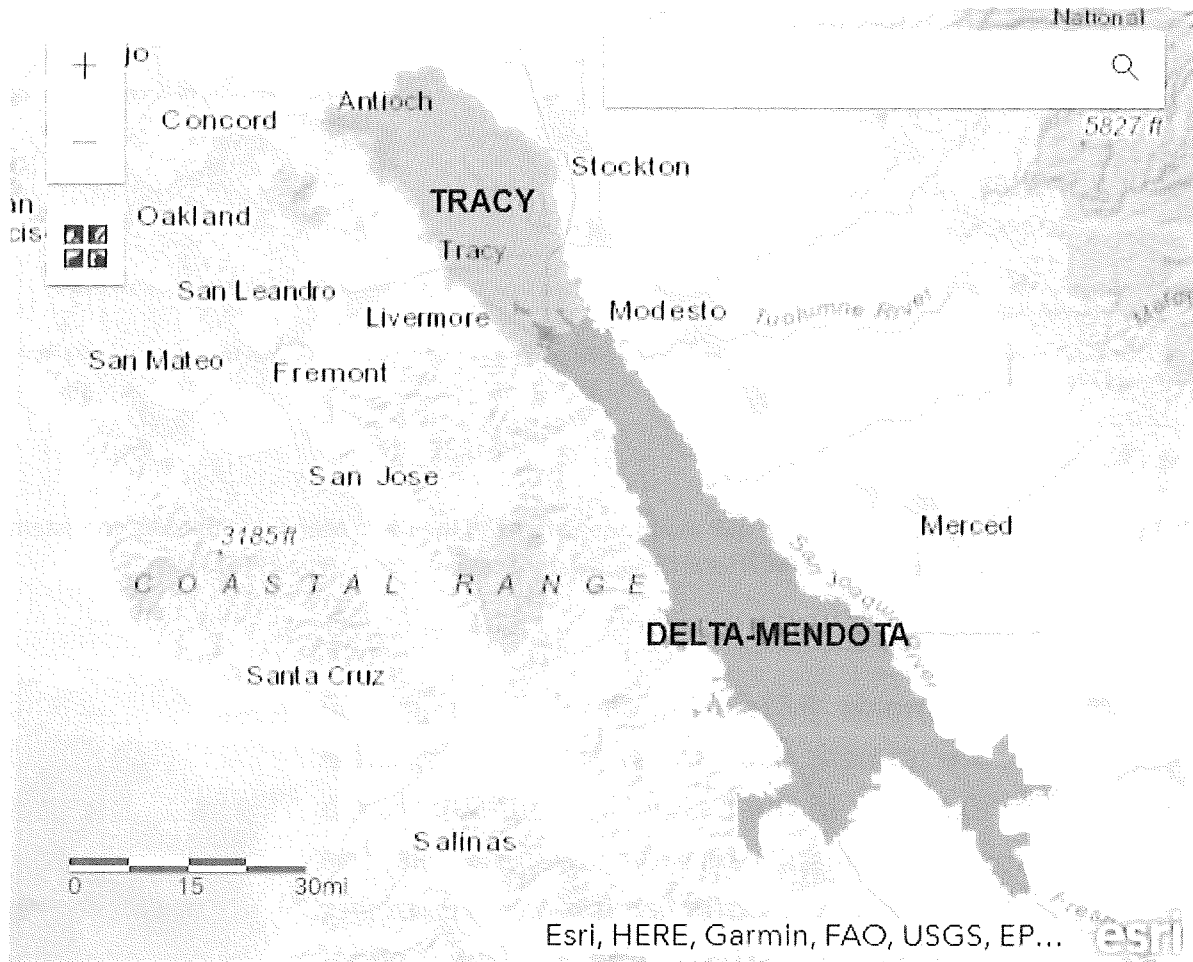
The proposed project is implementing GSP monitoring efforts in the Delta-Mendota Subbasin consistent with updated GSPs in coordination with local Groundwater Sustainability Agencies (GSAs).

### Minimum Thresholds

Minimum Thresholds (MTs), explained more in GSP Chapter 13, are numeric values that define *Undesirable Results*. For example, in the Delta Mendota Subbasin a key indicator of sustainability is groundwater levels. The *chronic lowering of groundwater levels is a Sustainability Indicator*. The Subbasin MT for *Chronic Lowering of Groundwater Levels* set groundwater level at or above 2015 groundwater elevations. In simple terms, exceeding this MT would be an *undesirable result* requiring correction. The chronic lowering of groundwater influences several other key *sustainability Indicators*, including *Reduction of Groundwater Storage*, *Land Subsidence*, *Depletions of Interconnected Surface Water*, and, potentially, *Degraded Water Quality*. The MT level will support the avoidance of Undesirable Results for other Sustainability Indicators.

San Luis Delta-Mendota Water Authority (SLDMWA)  
Delta-Mendota Subbasin  
Delta-Mendota GSA Groundwater Sustainability Plan Implementation Project  
Notice of Exemption – For Stanislaus County Interconnected Surface Water Monitoring Well

---



Information follows on the proposed construction activities associated with expanding groundwater monitoring networks and filling data gaps for implementation of Delta-Mendota Subbasin GSA GSPs within San Joaquin, Stanislaus, and Merced counties. SLDMWA serves as a Program Manager for the implementation of GSP activities and Stanislaus County is the lead agency for ISW monitoring well located in Vernalis, CA.

San Luis Delta-Mendota Water Authority (SLDMWA)  
Delta-Mendota Subbasin  
Delta-Mendota GSA Groundwater Sustainability Plan Implementation Project  
Notice of Exemption – For Stanislaus County Interconnected Surface Water Monitoring Well

---

### Items Included in Attachment 2

#### Excerpts Regarding Data Gaps from Delta-Mendota Subbasin GSPs

#### Proposed Stanislaus County Monitoring Well Location Map

##### Project Description:

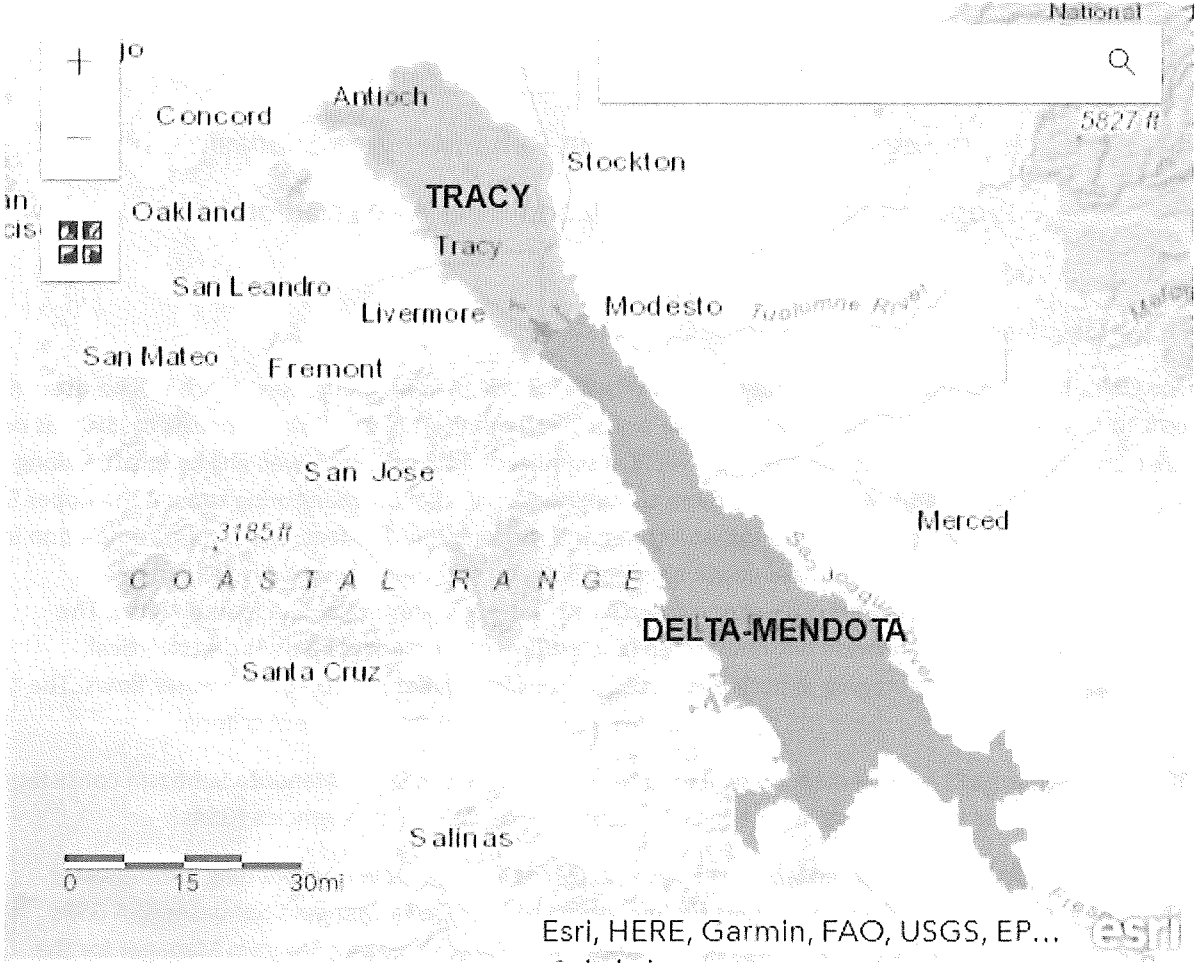
The Delta-Mendota Subbasin has obtained grant funds for SGMA implementation, which will be used in part to construct three interconnected surface water (ISW) monitoring wells. Data specific to ISW has not been collected, and these monitoring sites will fill a significant data gap. Each well will be located along the San Joaquin River and will consist of three completions: one shallow monitoring zone in the upper 50 feet, a second completion within the Upper Aquifer at approximately 150 feet, and a third completion in the Lower Aquifer to an approximate depth between 300 and 450 feet. These wells will provide information on how shallow groundwater interacts with surface water in the San Joaquin River. The deeper completions will provide information on how groundwater management impacts vertical gradients and whether pumping in both the Upper and Lower Aquifer affects surface water flows. The data collected from these wells will be used to develop sustainable management criteria.

The proposed project is implementing GSP monitoring efforts in the Delta-Mendota Subbasin consistent with updated GSPs in coordination with local Groundwater Sustainability Agencies (GSAs).

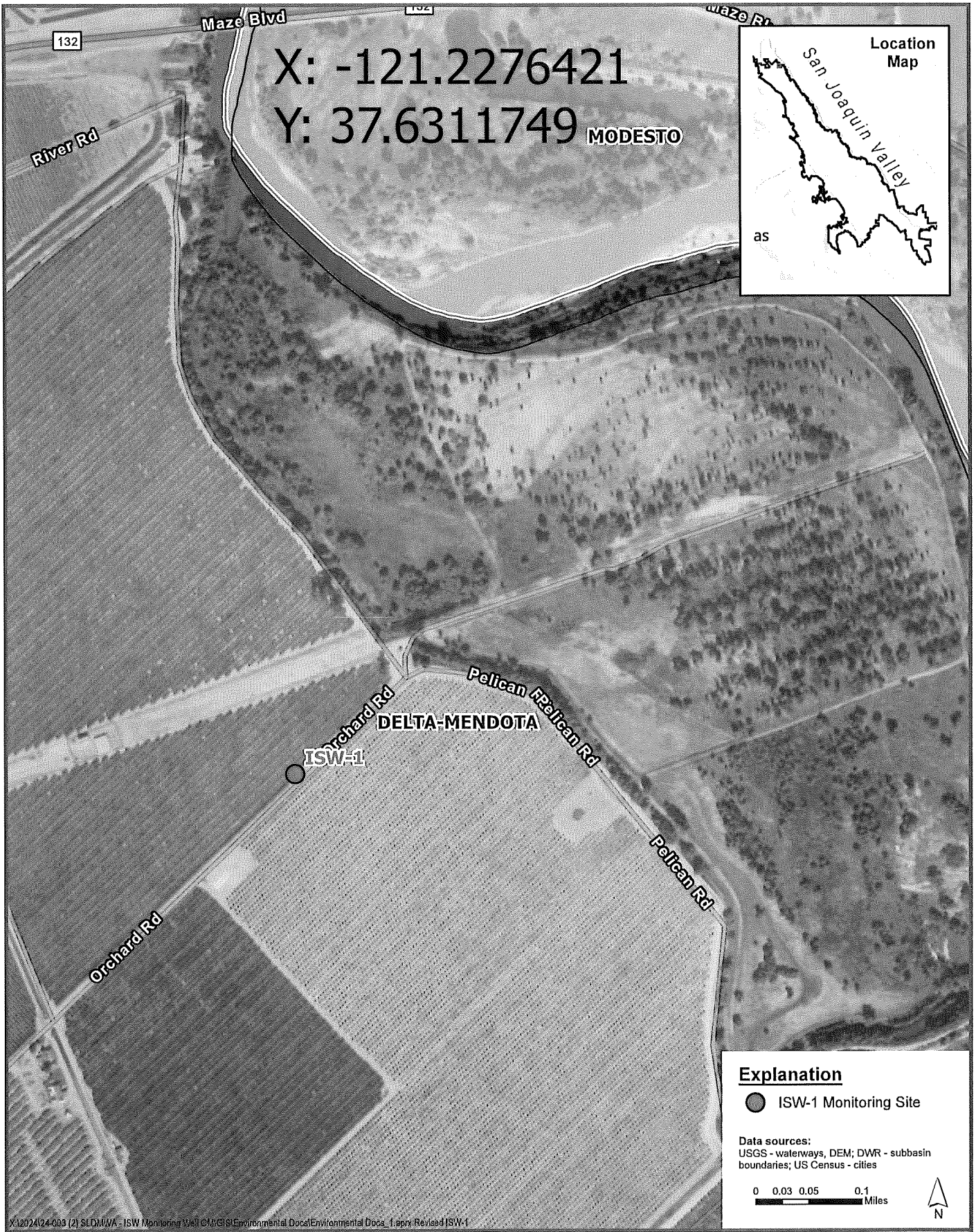
Information follows on the proposed construction activities associated with expanding groundwater monitoring networks and filling data gaps for implementation of Delta-Mendota Subbasin GSA GSPs within San Joaquin, Stanislaus, and Merced counties. SLDMWA serves as a Program Manager for the implementation of GSP activities. And Stanislaus County serves as the lead agency for the ISW monitoring well located in Vernalis, CA.

San Luis Delta-Mendota Water Authority (SLDMWA)  
Delta-Mendota Subbasin  
Delta-Mendota GSA Groundwater Sustainability Plan Implementation Project  
Notice of Exemption – For Stanislaus County Interconnected Surface Water Monitoring Well

---



Information follows on the proposed construction activities associated with expanding groundwater monitoring networks and filling data gaps for implementation of Delta-Mendota Subbasin GSA GSPs within San Joaquin, Stanislaus, and Merced counties. SLDMWA serves as a Program Manager for the implementation of GSP activities and Stanislaus County is the lead agency for ISW monitoring well located in Vernalis, CA.



X:\2024\24-093 (2) SLD\1WA - ISW Monitoring Well C\GIS\Environmental Docs\Environmental Docs\_1.aprx Revised ISW-1



**Luhdorff &  
Scalmanini**  
Consulting Engineers

**ISW-1**

*Delta-Mendota GSP Implementation  
Prop. 68 Round 1 Implementation Project  
Monitoring Network Enhancements Delta-Mendota  
Interconnected Surface Water Monitoring Well*