

Attachment 9: Trip Generation Analysis and Site Access Evaluation

PINNACLE TRAFFIC ENGINEERING

9452 Telephone Road, #440
Ventura, California 93004
(805) 644-9260 • PinnacleTE.com

July 27, 2020

Mr. John A. Smith, PE
Tartaglia Engineering
7360 El Camino Real, Suite E
Atascadero, CA 93423

RE: Plantel Nurseries Expansion Project (19RVP-00000-00115); Santa Barbara County, CA
Project Site Trip Generation Analysis and Site Access Evaluation

Dear Mr. Smith,

Pinnacle Traffic Engineering (PTE) is pleased to submit the project site trip generation analysis and site access evaluation for the Plantel Nurseries Expansion Project. The Plantel Nurseries property consist of approximately 136 acres in the unincorporated area east of the City of Santa Maria (2775 E. Clark Avenue). A multi-year construction project has been completed on the western portion of the property. Plantel Nurseries is an existing state-of-the-art facility that grows high quality vegetable transplants (Monday - Friday, 6:00 AM to 7:00 PM). The facility is a wholesale nursery and does not offer retail sales, and therefore, very few customers visit the site. The number of daily workers varies between 120 and 140 employees, depending on the demand. There is one (1) daily work shift, but not all employees work the same schedule. Work on weekend days does occur on occasion with the same hours. A copy of the Plantel Nurseries Parcel Layout is attached.

Plantel Nurseries have initiated the development permit process for the eastern portion of the property (77 acres), which is currently in full agricultural production with temporary hoop structures (+/-35 acres) and outdoor growing beds (+/-7 acres). The hoop structures and growing beds are leased by local berry farmers, which are not operated by Plantel Nurseries (15-20 daily workers). The expansion project will remove the temporary structures and growing beds and construct thirteen (13) new greenhouse structures and a germination building (total area of 1,596,480 SF). The expansion project also includes the construction of a storm water detention basin and water filtration / recirculation system. The number of daily employees will increase by 10 to facilitate the expanded operations at the Plantel Nurseries. The East Side Development Plan also anticipates an increase in the number of daily trips associated with the various operational components (e.g. customer deliveries, suppliers, vendors, common carriers, vermiculite / soil / crop input & deliveries). A copy of the Eastside Expansion Site Plan, Greenhouse Dimension table and East Side Development Plan are attached.

Initial communications with the County’s Transportation Division indicated a traffic study is required to evaluate the potential impacts associated with the expansion project. The traffic study scope was discussed with County staff (William Robertson) to determine the specific requirements. The primary concerns are the additional trip generation and site access safety at the existing driveways on E. Clark Avenue. County staff determined a project site trip generation analysis and site access evaluation would satisfy the traffic study requirement. New traffic count data collected at the existing driveways would document the current traffic volumes and quantify the actual trip generation rates associated with the current operations (number of trips per employee). The “net” change in trip generation attributable to the expansion project would then be estimated using the actual trip generation rates. As requested by County staff, the estimated project generation would also be compared to the anticipated number of trips derived using the County’s “greenhouse” trip rates (Carpinteria Valley Greenhouse Program Final EIR). The site access evaluation on E. Clark Avenue includes a brief description of existing roadway conditions, a qualitative analysis of sight distance and a review of turn lane warrants.

Project Traffic Data Collection

New traffic count data was collected at the two (2) existing project site driveways on E. Clark Avenue during the morning (7-9 AM) and afternoon (4-6 PM) commuter peak periods by National Data & Survey Services (NDS). As requested by the project applicant, the data was collected on two (2) days to provide a better sampling of the trips associated with the existing operations (May 6th and 7th, 2020). The peak hour volumes within the 2-hour period represent the highest 60-minute volumes within each period. The AM and PM peak hour traffic volumes at both driveways are illustrated on Figure 1. It’s noted there were some minor adjustments to the raw data to balance the approach volumes between each driveway. A summary of the 2-hour period and peak hour traffic volumes associated with the existing Plantel Nurseries operations is provided in Table 1. Copies of the NDS data are attached.

Table 1 - Summary of Project Site Driveway Traffic Volume Data

Date and Period	Project Site Driveway on E. Clark Ave.		Totals
	West Driveway	East Driveway	
<u>May 6, 2020</u>			
7-9 AM	3 (1 In / 2 Out)	138 (116 In / 22 Out)	141 (117 In / 24 Out)
Peak Hour	1 (1 In / 0 Out)	96 (85 In / 11 Out)	97 (86 In / 11 Out)
4-6 AM	3 (2 In / 1 Out)	107 (17 In / 90 Out)	110 (19 In / 91 Out)
Peak Hour	1 (0 In / 1 Out)	74 (7 In / 67 Out)	75 (7 In / 68 Out)
<u>May 7, 2020</u>			
7-9 AM	2 (1 In / 1 Out)	117 (101 In / 16 Out)	119 (102 In / 17 Out)
Peak Hour	1 (1 In / 0 Out)	79 (72 In / 7 Out)	80 (73 In / 7 Out)
4-6 AM	2 (1 In / 1 Out)	110 (19 In / 91 Out)	112 (20 In / 92 Out)
Peak Hour	1 (0 In / 1 Out)	82 (12 In / 70 Out)	83 (12 In / 71 Out)

The data in Table 1 demonstrates that the traffic volumes were fairly consistent at each driveway on both days (May 6th & 7th). A majority of project site traffic enters and exits the easterly driveway (95-100%). The peak hour volumes comprise approximately 70% of the total 2-hour volumes.

Plantel Nurseries Trip Generation Rates

The data in Table 1 shows there were 97 (86 in & 11 out) AM peak hour trips and 75 trips (7 in & 68 out) PM peak hour trips on May 6th. Information provided by the Plantel Nurseries owner indicates there were a total 142 workers on May 6th (125 Plantel employees & 17 berry farm workers). On May 7th there were a total of 145 workers (126 Plantel employees & 19 berry farm workers) which generated 80 AM peak hour trips (73 & 7 out) and 83 PM peak hour trips (12 in & 71 out). The actual trip generation rates for the existing operations at the Plantel Nurseries were derived by dividing the total number of trips at both driveways (in & out) by the total number of employees / workers on both days.

The Institute of Transportation Engineers (ITE) also publishes trip rate data for nursery related land uses. A review of the various categories in the ITE Trip Generation Manual (10th Edition) identified the “Nursery (Whole)” land use (#818) as the closest match to the Plantel Nurseries facility. The trip rate data for the existing operations at the Plantel Nurseries and published by ITE is summarized in Table 2. The ITE data reflects the number of trips “per employee” (peak hour of adjacent street traffic between 7:00 & 9:00 AM and 4:00 & 6:00 PM) for a direct comparison with the Plantel Nurseries data. A copy of the Plantel Nurseries trip generation rate calculations is attached.

Table 2 - Plantel Nurseries and ITE Trip Generation Rates

Rate Source	Trip Rates (Number of Trip per Employee)					
	AM Peak Hour			PM Peak Hour		
	Total	In	Out	Total	In	Out
Plantel Nurseries (a)	0.617	0.554	0.063	0.551	0.066	0.485
ITE Trip Generation Manual (b)	0.340	0.305	0.035	0.470	0.056	0.414

(a) Existing trip generation rates based NDS data for May 6th and May 7th

(b) In & out percentages not available in ITE manual (used same as Plantel Nurseries)

The data in Table 2 demonstrates the trip rates associated with the existing operations are higher than the ITE rates during the AM peak hour, but fairly close during the PM peak hour.

Plantel Nurseries Expansion Trip Generation Estimates

As previously described, the existing hoop structures (+/-35 acres) and outdoor growing beds (+/-7 acres) on the project site (eastern portion of the property) will be removed as part of the expansion project. This accounts for about 1,861,000 SF of existing grow area (hoop structures +/-1,538,000 SF and growing beds +/-323,000 SF). The expansion project will replace the existing grow areas with the 13 new greenhouses (total area of 1,596,480 SF). Therefore, the expansion project will actually reduce the total amount of grow area on the project site by 264,520 SF (1,861,000 - 1,596,480).

Plantel Nurseries currently has between 120 and 140 employees on a daily basis. The number of daily employees will increase by 10 for the expanded operations (130-150 daily employees). However, removal of the temporary hoop structures and outdoor growing bed areas on the project site will eliminate the daily workers associated with the existing berry farming operations. A summary of the Plantel Nurseries (employee) and berry farming (worker) data is provided in Table 3.

Table 3 - Summary of Daily Employee / Worker Data

Development Scenario	Plantel Nurseries (Employees)	Berry Farmer (Workers)
Existing Plantel Nurseries Operations	120 to 140	15 to 20
Expanded Plantel Nurseries Operations	130 to 150	0
Project "Net" Change:	+10	-15 to -20

The data in Table 3 demonstrates the proposed expansion project will actually reduce the total number of daily employees and workers on the Plantel Nurseries property.

As previously stated, the East Site Development Plan anticipates an increase in the number of daily trips associated with the various operational components (e.g. customer deliveries, suppliers, vendors, common carriers, vermiculite / soil / crop input & deliveries). The trip generation estimates associated with the existing operations and proposed expanded operations are displayed in Table 4.

Table 4 - Plantel Nurseries Expansion Project Trip Generation Estimates

Development Scenario	Number of Vehicles Trip					
	AM Peak Hour			PM Peak Hour		
	Total	In	Out	Total	In	Out
<u>Existing Operations</u>						
Plantel Nurseries - 130 Employees (a)	80	72	8	72	9	63
Berry Farmer - 20 Workers (a)	12	11	1	11	1	10
Plantel Nurseries Shipping & Receiving (b)	5	4	1	5	1	4
Sub-Totals:	97	87	10	88	11	77
<u>Proposed Expanded Operations</u>						
Plantel Nurseries - 140 Employees (a)	86	77	9	77	9	68
Berry Farmer - 0 Workers	0	0	0	0	0	0
Plantel Nurseries Shipping & Receiving (b)	8	6	2	8	2	6
Sub-Totals:	94	83	11	85	11	74
"Net" Change:	-3	-4	+1	-3	0	-3

(a) Peak hour based on "actual" trips rates (Table 2) using average number of employees

(b) Peak hour (10% of daily) based on 50 existing daily trips & 80 expanded daily trips (+60%)

The data in Table 4 indicates the Plantel Nurseries Expansion Project will generate 3 fewer trips during the AM and PM peak hour periods. This reflects an increase in the number of daily employees at the Plantel Nurseries facility, elimination of the berry farmer daily workers and increase in the daily operational components at the Plantel Nurseries facility.

Expansion Project Trip Generation Based on County Rates

The County has adopted the Carpinteria Valley Greenhouse Program Final EIR, which includes trip generation rates for greenhouse operations. The rates were developed from studies conducted in Santa Barbara and Ventura Counties (including sites in the Carpinteria area). The trip rates are based on the amount of greenhouse area (trips per 1,000 SF). County staff initially estimated the project trips based on the proposed new greenhouse area (1,596,480 SF); which indicated the Plantel Nurseries Expansion project would generate a significant of new trips. However, the County didn't give any credit for the removal of the existing temporary hoop structures or outdoor growing beds currently on the project site (eastern portion of the property). As previously described, the existing hoop structures occupy an area of +/-1,538,000 SF and the growing beds occupy an additional +/-323,000 SF. Table 5 presents an estimate of the project trips using the County approved "greenhouse" rates and assuming a credit for removing the temporary hoop structures.

Table 5 - Plantel Nurseries Expansion Project Trip Generation Estimates
 (County "Greenhouse" Rates and Removal of Exist. Hoop Structures)

County Rates / Development Scenario	Number of Vehicles Trip	
	AM Peak Hour	PM Peak Hour
County "Greenhouse" Trip Rates (a)	0.03	0.06
Existing Hoop Structures - 1,538,000 SF (b)	-46	-92
Proposed Expansion - 1,596,480 SF	48	96
"Net" Change:	+2	+4

- (a) County trip rates per 1,000 SF
- (b) Existing structures to be removed

The data in Table 5 indicates the Plantel Nurseries Expansion Project would generate only a minor increase in peak hour trips using the County rates and assuming credit for removing only the existing temporary hoop structures. If the County also gives credit for removing the existing outside growing bed area (+/-323,000 SF) the resultant "net" change in peak hour trips would be less than estimated in Table 4 (-8 AM peak hour trips and -15 PM peak hour trips).

Site Access Evaluation

The evaluation of project site access presents an analysis of sight distance and turn lane warrants. The evaluation has been conducted using standards published by Caltrans (Guidelines for the Preparation of Traffic Impact Studies) and AASHTO (A Policy on Geometric Design of Highways and Streets). E. Clark Avenue adjacent to the Plantel Nurseries property has a single travel lane (+/-13') in each

direction, with shoulders (6-7') and a 55 miles per hour (mph) speed limit. This section of E. Clark Avenue has a relatively straight horizontal alignment and passing is allowed. There is a vertical curve "crest" about 1,200' west of the existing westerly project site driveway. E. Clark Avenue extends east of the vertical curve "crest" along the project site frontage on a slight downhill alignment. The line of sight looking east from the easterly driveway is relatively unobstructed for of at least 950'. Looking west from the westerly driveway the line of sight is relatively unobstructed for +/-1,200'.

A review of sight distance was conducted using criteria in the Caltrans Highway Design Manual (HDM, Chapters 200 and 400). Stopping sight distance is the minimum distance required by a driver to bring a vehicle to a complete stop after an object on the roadway has become visible (Table 201.1). Corner sight distance is the minimum time required for a waiting vehicle (e.g. at a driveway or side street) to either cross all lanes of through traffic, or cross the near lanes and turn left or right "without requiring through traffic to radically alter their speed" (Table 405.1A). Based on existing conditions, there is sufficient stopping sight distance for vehicles traveling on E. Clark Avenue and approaching the project site driveways (≥ 70 mph). In addition, there is adequate corner sight distance for vehicles entering E. Clark Avenue from either project site driveway (≥ 70 mph).

Again, the evaluation of turn lane warrants was conducted using criteria published by Caltrans and AASHTO. The right turn lane warrant considers the number of turning vehicles during the peak hour and total number of vehicles in the same direction (copy of the right turn lane warrant is attached). The number of right turning peak hour trips at both project site driveways is and will remain well below the minimum criteria for considering the addition of a right turn lane (<20 vehicles per hour, vph). County staff has acknowledged that the proposed expansion project would not warrant the addition of a right turn lane on E. Clark Avenue (at either driveway).

The left turn lane warrant considers the number of travel lanes (on main road), vehicle speeds, total peak hour advancing volume (vph), percentage (%) left turns in the advancing volume and the total peak hour opposing volume (vph). The left turn lane warrant nomograph criterion are provided for left turning volumes comprising between 5% and 40% of the total advancing volume (vph). The left turn "treatment" warrant is satisfied when the plotted points (percentage left turns, and the advancing and opposing volumes) fall on the right side of the corresponding "percent left turn" curve on the left turn lane warrant nomograph (e.g. 40, 50 or 60 mph). Typically, if the left turning volume comprises more than 40% of the total advancing volume (<600-700 vph) and the opposing volume is less than 700 vph the nomograph indicates that "Left-Turn Treatment Not Warranted."

As described in the "Project Traffic Data Collection" discussion, new peak period traffic count data was collected at the two (2) existing project site driveways on May 6th and 7th, 2020. Unfortunately, due to the current global health crisis background traffic volumes on the local and regional roadway networks were not representative of "normal" traffic conditions. However, since the Plantel Nurseries facility produces food related products and the project applicant indicated that the existing operations were not impacted by the current health crisis. Therefore, County staff agreed that collecting the traffic

count data at the existing driveways was acceptable to document the existing trip rates at the facility (number of peak hour trips based on the actual number of employees).

Traffic data was referenced from various studies to determine the appropriate peak hour demands for the left turn lane warrant evaluation on E. Clark Avenue (Orcutt Community Plan EIR, US 101 at Clark Avenue Interchange PSR-PDS and Orcutt Community Plan Key Sites 1-4 Buildout Traffic Analysis). The data indicates that daily traffic demands on E. Clark Avenue east of US 101 will range from 5,400-6,000 ADT under buildout conditions. It's noted that the Lake Marie Estates subdivision (+/-175 SFDU homes; +/-1,750 ADT) and Glad-A-Way Gardens (+/-500 ADT) are located between US 101 and the project site. Therefore, it's anticipated that daily demands on E. Clark Avenue adjacent to the project site will range from 3,150-3,750 ADT under buildout traffic conditions. Typically, the AM peak hour volumes comprise +/-8% of the daily total and the PM peak hour volumes comprise +/-10% of the daily total. The existing data also shows that during the AM peak hour the majority of traffic is eastbound (74%), while during the PM peak hour the majority of traffic is westbound (69%).

The estimated buildout peak hour traffic volumes on E. Clark Avenue at the project site driveways are shown on Figure 2 (attached). The left turn lane warrant analysis focuses on conditions at the easterly driveway since a majority of the Plantel Nurseries peak hour traffic uses this driveway (98-99%). The future buildout traffic demands were plotted on the left turn lane warrant nomograph (attached). The left turn lane warrant analysis indicates that future peak hour traffic demands will not warrant the addition of an exclusive left turn only lane on the eastbound approach of E. Clark Avenue at the easterly project site driveway.

Please contact my office with any questions regarding the Project Site Trip Generation Analysis and Site Access Evaluation.

Pinnacle Traffic Engineering



Larry D. Hail, CE, TE
President

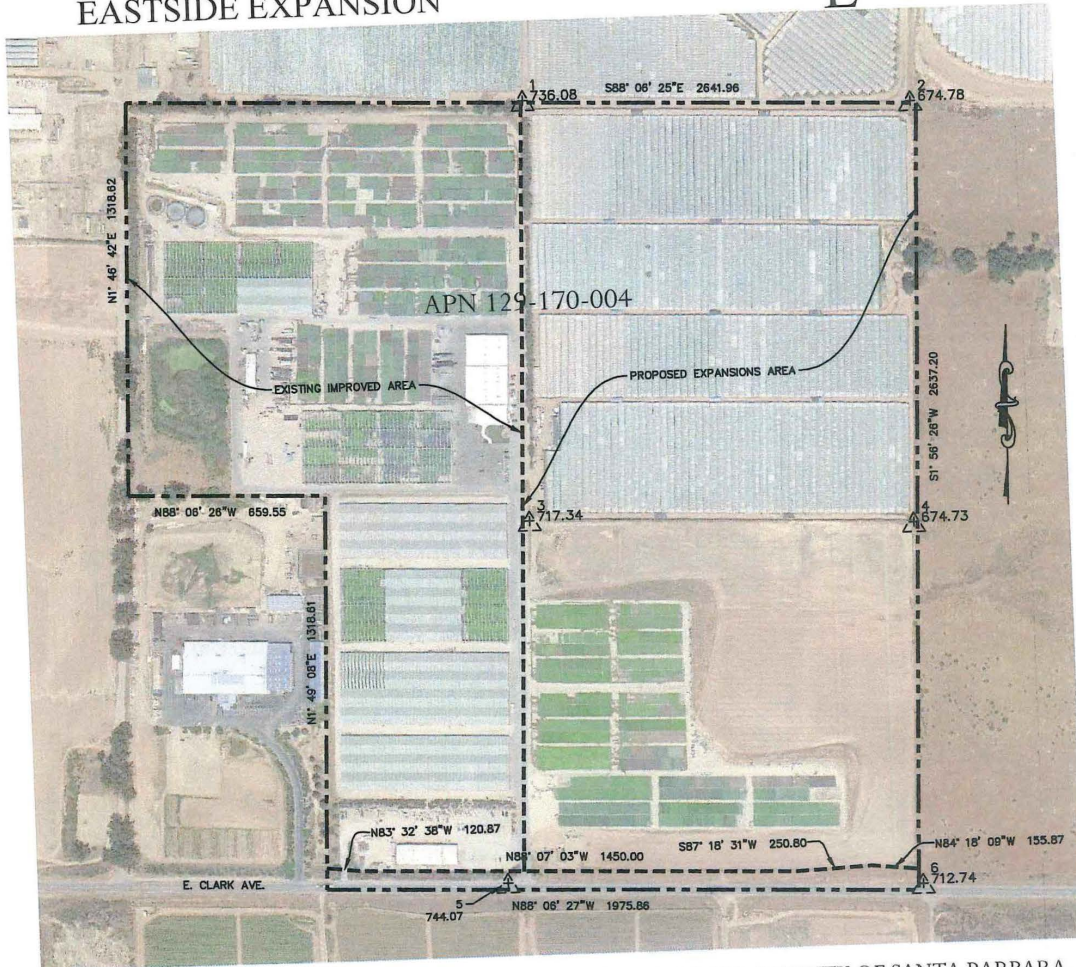
ldh:msw



- Attachments:
- Plantel Nurseries Parcel Layout and Eastside Expansion Site Plan
 - Plantel Nurseries Greenhouse Dimension Table
 - Figure 1 - Plantel Nurseries Existing Traffic Volumes (May 6th & 7th, 2020)
 - National Data & Surveying Services (NDS) Traffic Count Data (May 6th & 7th, 2020)
 - Plantel Nurseries Trip Generation Rate Calculations
 - Right Turn Lane Guidelines (Cottrell's & VHTRC)
 - Figure 2 - Plantel Nurseries Buildout Traffic Volumes
 - Left Turn Lane Warrant Nomograph

PLANTEL NURSERIES, INC.
EASTSIDE EXPANSION

TARTAGLIA
ENGINEERING

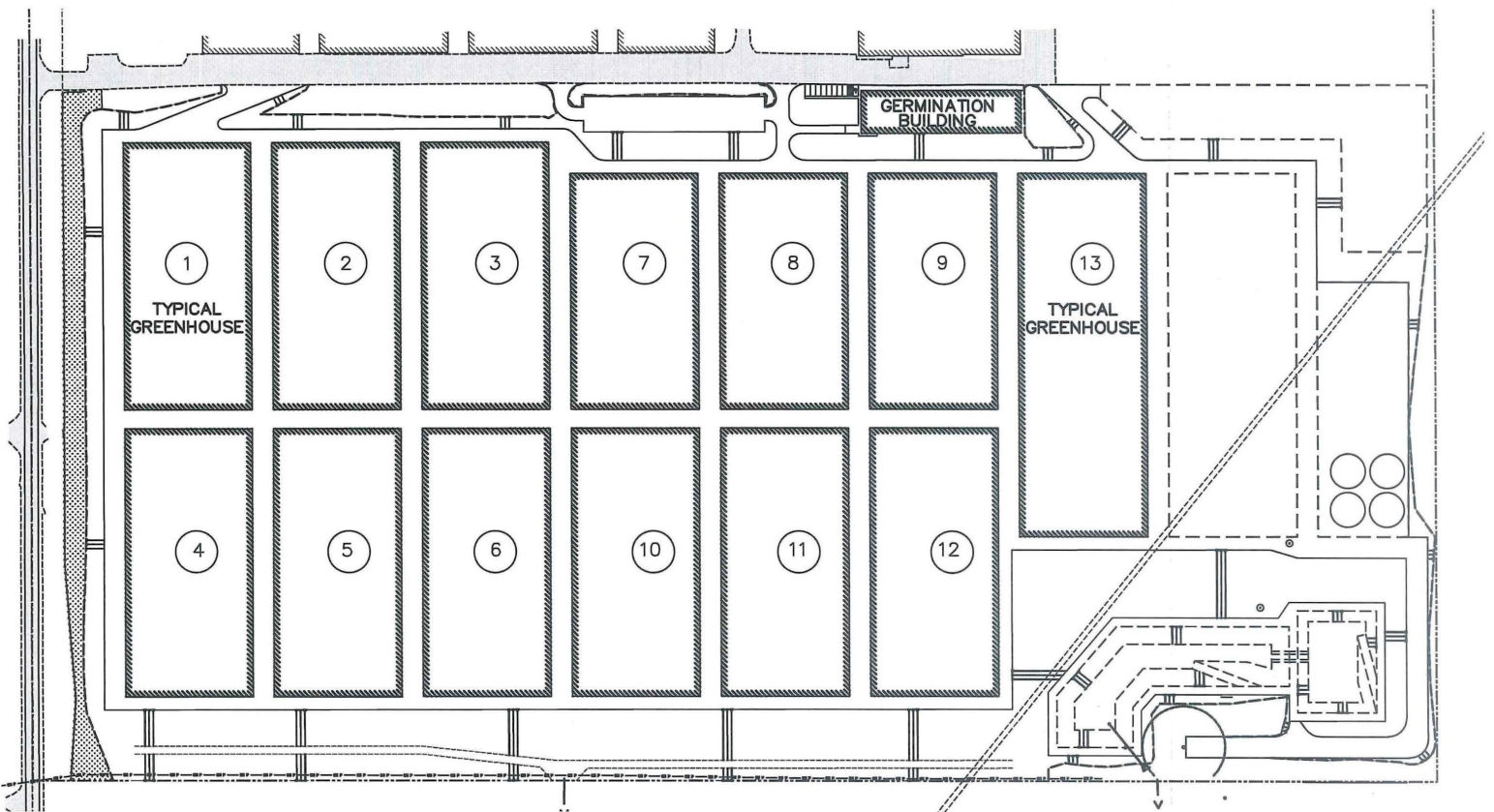


PARCEL LAYOUT
SCALE: N.T.S.

APN 129-170-004, COUNTY OF SANTA BARBARA
2775 E. CLARK AVENUE, SANTA MARIA, CA 93455

PLANTEL NURSERIES, INC.
EASTSIDE EXPANSION

TARTAGLIA
ENGINEERING



SITE PLAN
NO SCALE

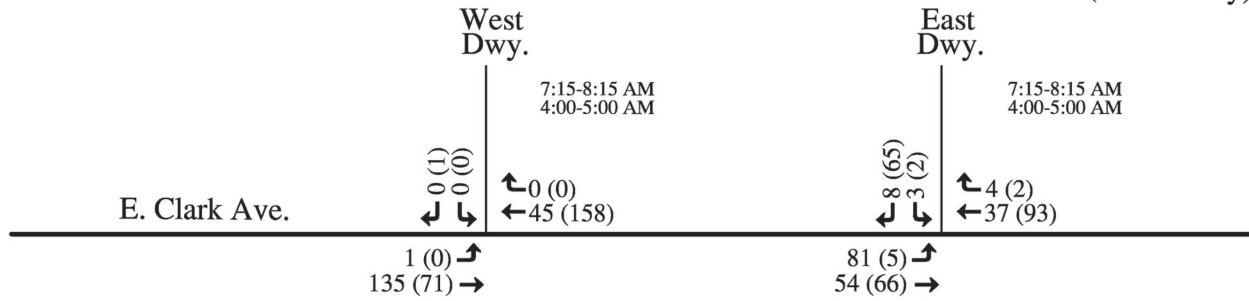
NOTE: NO SIGNAGE PROPOSED FOR THIS PROJECT

APN 129-170-004, COUNTY OF SANTA BARBARA
2775 E. CLARK AVENUE, SANTA MARIA, CA 93455

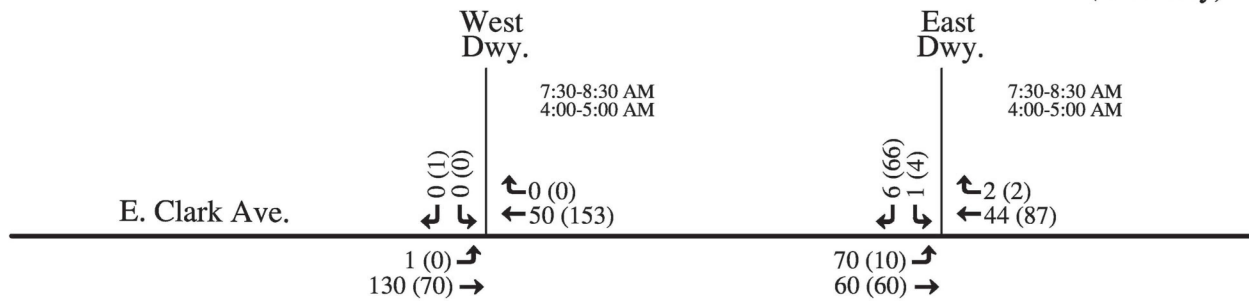
GREENHOUSE DIMENSIONS

NO.	LENGTH (FT)	WIDTH (FT)	AREA (SF)
1	504	240	120,960
2	504	240	120,960
3	504	240	120,960
4	504	240	120,960
5	504	240	120,960
6	504	240	120,960
7	444	240	106,560
8	444	240	106,560
9	444	240	106,560
10	504	240	120,960
11	504	240	120,960
12	504	240	120,960
13	684	240	164,160
GREENHOUSE TOTAL			1,572,480
PROPOSED GERMINATION BUILDING			24,000
TOTAL BUILDING & GREENHOUSES			1,596,480

May 6, 2020
(Wednesday)



May 7, 2020
(Thursday)



LEGEND

← 00 (00) = AM (PM) Peak Hour Traffic Volume



National Data & Surveying Services Intersection Turning Movement Count

Location: Plantel Nurseries West Dwy & Clark Ave
City: Santa Maria
Control: No Control

Project ID: 20-02013-001
Date: 5/6/2020

Total

NS/EW Streets:	Plantel Nurseries West Dwy				Plantel Nurseries West Dwy				Clark Ave				Clark Ave				
AM	NORTHBOUND				SOUTHBOUND				EASTBOUND				WESTBOUND				TOTAL
	NL	NT	NR	NU	SL	ST	SR	SU	EL	ET	ER	EU	WL	WT	WR	WU	
7:00 AM	0	0	0	0	0	0	0	0	0	17	0	0	0	15	0	0	32
7:15 AM	0	0	0	0	0	0	0	0	0	32	0	0	0	13	0	0	45
7:30 AM	0	0	0	0	0	0	0	0	0	33	0	0	0	14	0	0	47
7:45 AM	0	0	0	0	0	0	0	0	1	38	0	0	0	9	0	0	48
8:00 AM	0	0	0	0	0	0	0	0	0	32	0	0	0	9	0	0	41
8:15 AM	0	0	0	0	0	0	0	0	0	29	0	0	0	13	0	0	42
8:30 AM	0	0	0	0	0	0	1	0	0	24	0	0	0	19	0	0	44
8:45 AM	0	0	0	0	0	0	1	0	0	24	0	0	0	8	0	0	33
TOTAL VOLUMES :	0	0	0	0	0	0	0	0	1	229	0	0	0	100	0	0	332
APPROACH %'s :					0.00%	0.00%	100.00%	0.00%	0.43%	99.57%	0.00%	0.00%	0.00%	100.00%	0.00%	0.00%	
PEAK HR :	07:15 AM - 08:15 AM				0	0	0	0	1	135	0	0	0	45	0	0	181
PEAK HR VOL :	0	0	0	0	0	0	0	0	0.250	0.888	0.000	0.000	0.000	0.804	0.000	0.000	0.943
PEAK HR FACTOR :	0.000	0.000	0.000	0.000	0.000	0.000	0.000	0.000	0.872				0.804				0.943
PM	NORTHBOUND				SOUTHBOUND				EASTBOUND				WESTBOUND				TOTAL
	NL	NT	NR	NU	SL	ST	SR	SU	EL	ET	ER	EU	WL	WT	WR	WU	
4:00 PM	0	0	0	0	0	0	0	0	0	17	0	0	0	38	0	0	55
4:15 PM	0	0	0	0	0	0	0	0	0	17	0	0	0	47	0	0	64
4:30 PM	0	0	0	0	0	0	0	0	0	21	0	0	0	34	0	0	55
4:45 PM	0	0	0	0	0	0	1	0	0	16	0	0	0	39	0	0	56
5:00 PM	0	0	0	0	0	0	0	0	0	12	0	0	0	31	0	0	43
5:15 PM	0	0	0	0	0	0	0	0	0	9	0	0	0	13	0	0	22
5:30 PM	0	0	0	0	0	0	0	0	0	13	0	0	0	10	0	0	23
5:45 PM	0	0	0	0	0	0	0	0	2	11	0	0	0	20	0	0	33
TOTAL VOLUMES :	0	0	0	0	0	0	1	0	2	116	0	0	0	232	0	0	351
APPROACH %'s :					0.00%	0.00%	100.00%	0.00%	1.69%	98.31%	0.00%	0.00%	0.00%	100.00%	0.00%	0.00%	
PEAK HR :	04:00 PM - 05:00 PM				0	0	1	0	0	71	0	0	0	158	0	0	230
PEAK HR VOL :	0	0	0	0	0.000	0.000	0.250	0.000	0.000	0.845	0.000	0.000	0.000	0.840	0.000	0.000	0.898
PEAK HR FACTOR :	0.000	0.000	0.000	0.000	0.000	0.000	0.250	0.000	0.845				0.840				0.898

National Data & Surveying Services

Intersection Turning Movement Count

Location: Plantel Nurseries West Dwy & Clark Ave
City: Santa Maria
Control: No Control

Project ID: 20-02013-001
Date: 5/6/2020

HT

NS/EW Streets:	Plantel Nurseries West Dwy				Plantel Nurseries West Dwy				Clark Ave				Clark Ave				
AM	NORTHBOUND				SOUTHBOUND				EASTBOUND				WESTBOUND				TOTAL
	NL	NT	NR	NU	SL	ST	SR	SU	EL	ET	ER	EU	WL	WT	WR	WU	
7:00 AM	0	0	0	0	0	0	0	0	0	1	0	0	0	2	0	0	3
7:15 AM	0	0	0	0	0	0	0	0	0	0	0	0	0	2	0	0	2
7:30 AM	0	0	0	0	0	0	0	0	0	0	0	0	0	3	0	0	3
7:45 AM	0	0	0	0	0	0	0	0	0	1	0	0	0	1	0	0	2
8:00 AM	0	0	0	0	0	0	0	0	0	2	0	0	0	0	0	0	2
8:15 AM	0	0	0	0	0	0	0	0	0	2	0	0	0	1	0	0	3
8:30 AM	0	0	0	0	0	0	1	0	0	3	0	0	0	5	0	0	9
8:45 AM	0	0	0	0	0	0	1	0	0	3	0	0	0	4	0	0	8
TOTAL VOLUMES :	0	0	0	0	0	0	2	0	0	12	0	0	0	18	0	0	32
APPROACH %'s :					0.00%	0.00%	100.00%	0.00%	0.00%	100.00%	0.00%	0.00%	0.00%	100.00%	0.00%	0.00%	
PEAK HR :	07:15 AM - 08:15 AM																TOTAL
PEAK HR VOL :	0	0	0	0	0	0	0	0	0	3	0	0	0	6	0	0	9
PEAK HR FACTOR :	0.000	0.000	0.000	0.000	0.000	0.000	0.000	0.000	0.000	0.375	0.000	0.000	0.000	0.500	0.000	0.000	0.750
										0.375				0.500			
PM	NORTHBOUND				SOUTHBOUND				EASTBOUND				WESTBOUND				TOTAL
	NL	NT	NR	NU	SL	ST	SR	SU	EL	ET	ER	EU	WL	WT	WR	WU	
4:00 PM	0	0	0	0	0	0	0	0	0	2	0	0	0	0	0	0	2
4:15 PM	0	0	0	0	0	0	0	0	0	3	0	0	0	4	0	0	7
4:30 PM	0	0	0	0	0	0	0	0	0	1	0	0	0	2	0	0	3
4:45 PM	0	0	0	0	0	0	1	0	0	1	0	0	0	1	0	0	3
5:00 PM	0	0	0	0	0	0	0	0	0	2	0	0	0	1	0	0	3
5:15 PM	0	0	0	0	0	0	0	0	0	1	0	0	0	1	0	0	2
5:30 PM	0	0	0	0	0	0	0	0	0	2	0	0	0	0	0	0	2
5:45 PM	0	0	0	0	0	0	0	0	1	4	0	0	0	0	0	0	5
TOTAL VOLUMES :	0	0	0	0	0	0	1	0	1	16	0	0	0	9	0	0	27
APPROACH %'s :					0.00%	0.00%	100.00%	0.00%	5.88%	94.12%	0.00%	0.00%	0.00%	100.00%	0.00%	0.00%	
PEAK HR :	04:00 PM - 05:00 PM																TOTAL
PEAK HR VOL :	0	0	0	0	0	0	1	0	0	7	0	0	0	7	0	0	15
PEAK HR FACTOR :	0.00	0.000	0.000	0.000	0.000	0.000	0.250	0.000	0.000	0.583	0.000	0.000	0.000	0.438	0.000	0.000	0.536
							0.250			0.583				0.438			

National Data & Surveying Services Intersection Turning Movement Count

Location: Plantel Nurseries East Dwy & Clark Ave
City: Santa Maria
Control: No Control

Project ID: 20-02013-002
Date: 5/6/2020

Total

NS/EW Streets:	Plantel Nurseries East Dwy				Plantel Nurseries East Dwy				Clark Ave				Clark Ave				TOTAL				
	NORTHBOUND				SOUTHBOUND				EASTBOUND				WESTBOUND								
AM	0	0	0	0	0	1	0	0	0	1	0	0	0	1	0	0	0	1	0	0	TOTAL
	NL	NT	NR	NU	SL	ST	SR	SU	EL	ET	ER	EU	WL	WT	WR	WU					
7:00 AM	0	0	0	0	0	0	1	0	5	12	0	0	0	14	1	0	33				
7:15 AM	0	0	0	0	0	0	3	0	19	12	0	0	0	10	1	0	45				
7:30 AM	0	0	0	0	1	0	3	0	26	8	0	0	0	11	1	0	50				
7:45 AM	0	0	0	0	0	0	1	0	21	17	0	0	0	8	1	0	48				
8:00 AM	0	0	0	0	2	0	1	0	13	15	0	0	0	8	1	0	40				
8:15 AM	0	0	0	0	0	0	0	0	20	12	0	0	0	13	0	0	45				
8:30 AM	0	0	0	0	2	0	5	0	4	21	0	0	0	14	0	0	46				
8:45 AM	0	0	0	0	0	0	3	0	1	23	0	0	0	5	2	0	34				
TOTAL VOLUMES :	NL	NT	NR	NU	SL	ST	SR	SU	EL	ET	ER	EU	WL	WT	WR	WU	TOTAL				
APPROACH %'s :	0	0	0	0	5	0	17	0	109	120	0	0	0	83	7	0	341				
					22.73%	0.00%	77.27%	0.00%	47.60%	52.40%	0.00%	0.00%	0.00%	92.22%	7.78%	0.00%					
PEAK HR :	07:15 AM - 08:15 AM																TOTAL				
PEAK HR VOL :	0	0	0	0	3	0	8	0	79	52	0	0	0	37	4	0	183				
PEAK HR FACTOR :	0.000	0.000	0.000	0.000	0.375	0.000	0.667	0.000	0.760	0.765	0.000	0.000	0.000	0.841	1.000	0.000	0.915				
							0.688				0.862				0.854						
PM	0	0	0	0	0	1	0	0	0	1	0	0	0	1	0	0	TOTAL				
	NL	NT	NR	NU	SL	ST	SR	SU	EL	ET	ER	EU	WL	WT	WR	WU					
4:00 PM	0	0	0	0	0	0	9	0	1	16	0	0	0	28	1	0	55				
4:15 PM	0	0	0	0	0	0	21	0	1	16	0	0	0	27	1	0	66				
4:30 PM	0	0	0	0	1	0	13	0	1	20	0	0	0	21	0	0	56				
4:45 PM	0	0	0	0	1	0	22	0	2	14	0	0	0	16	0	0	55				
5:00 PM	0	0	0	0	0	0	14	0	1	11	0	0	0	17	1	0	44				
5:15 PM	0	0	0	0	0	0	3	0	1	8	0	0	0	10	0	0	22				
5:30 PM	0	0	0	0	0	0	0	0	2	11	0	0	0	11	1	0	25				
5:45 PM	0	0	0	0	0	0	6	0	2	9	0	0	0	13	2	0	32				
TOTAL VOLUMES :	NL	NT	NR	NU	SL	ST	SR	SU	EL	ET	ER	EU	WL	WT	WR	WU	TOTAL				
APPROACH %'s :	0	0	0	0	2	0	88	0	11	105	0	0	0	143	6	0	355				
					2.22%	0.00%	97.78%	0.00%	9.48%	90.52%	0.00%	0.00%	0.00%	95.97%	4.03%	0.00%					
PEAK HR :	04:00 PM - 05:00 PM																TOTAL				
PEAK HR VOL :	0	0	0	0	2	0	65	0	5	66	0	0	0	92	2	0	232				
PEAK HR FACTOR :	0.000	0.000	0.000	0.000	0.500	0.000	0.739	0.000	0.625	0.825	0.000	0.000	0.000	0.821	0.500	0.000	0.879				
							0.728				0.845				0.810						

National Data & Surveying Services Intersection Turning Movement Count

Location: Plantel Nurseries East Dwy & Clark Ave
City: Santa Maria
Control: No Control

Project ID: 20-02013-002
Date: 5/6/2020

HT

NS/EW Streets:	Plantel Nurseries East Dwy				Plantel Nurseries East Dwy				Clark Ave				Clark Ave					
AM	NORTHBOUND				SOUTHBOUND				EASTBOUND				WESTBOUND				TOTAL	
	NL	NT	NR	NU	SL	ST	SR	SU	EL	ET	ER	EU	WL	WT	WR	WU		
7:00 AM	0	0	0	0	0	1	0	0	0	0	1	0	0	0	0	0	0	3
7:15 AM	0	0	0	0	0	0	0	0	0	0	0	0	0	2	0	0	0	2
7:30 AM	0	0	0	0	0	0	1	0	0	0	0	0	0	2	0	0	0	3
7:45 AM	0	0	0	0	0	0	0	0	0	1	0	0	0	1	0	0	0	2
8:00 AM	0	0	0	0	1	0	0	0	0	1	0	0	0	0	0	0	0	2
8:15 AM	0	0	0	0	0	0	0	0	1	2	0	0	0	1	0	0	0	4
8:30 AM	0	0	0	0	0	0	3	0	0	3	0	0	0	2	0	0	0	8
8:45 AM	0	0	0	0	0	0	2	0	0	3	0	0	0	2	1	0	0	8
TOTAL VOLUMES :	NL	NT	NR	NU	SL	ST	SR	SU	EL	ET	ER	EU	WL	WT	WR	WU		TOTAL
APPROACH %'s :	0	0	0	0	1	0	7	0	2	10	0	0	0	0	11	1	0	32
	07:15 AM - 08:15 AM				12.50%	0.00%	87.50%	0.00%	16.67%	83.33%	0.00%	0.00%	0.00%	91.67%	8.33%	0.00%		
PEAK HR :					1	0	1	0	0	2	0	0	0	5	0	0		9
PEAK HR VOL :	0	0	0	0	0.250	0.000	0.250	0.000	0.000	0.500	0.000	0.000	0.000	0.625	0.000	0.000		0.750
PEAK HR FACTOR :	0.000	0.000	0.000	0.000	0.500				0.500				0.625					
PM	NORTHBOUND				SOUTHBOUND				EASTBOUND				WESTBOUND				TOTAL	
	NL	NT	NR	NU	SL	ST	SR	SU	EL	ET	ER	EU	WL	WT	WR	WU		
4:00 PM	0	0	0	0	0	0	0	0	0	2	0	0	0	0	1	0	0	3
4:15 PM	0	0	0	0	0	0	3	0	0	3	0	0	0	0	1	1	0	8
4:30 PM	0	0	0	0	0	0	2	0	1	0	0	0	0	0	0	0	0	3
4:45 PM	0	0	0	0	0	0	1	0	1	0	0	0	0	0	0	0	0	2
5:00 PM	0	0	0	0	0	0	0	0	1	1	0	0	0	1	1	0	0	4
5:15 PM	0	0	0	0	0	0	1	0	1	0	0	0	0	0	0	0	0	2
5:30 PM	0	0	0	0	0	0	0	0	2	0	0	0	0	0	1	0	0	3
5:45 PM	0	0	0	0	0	0	0	0	2	2	0	0	0	0	2	0	0	6
TOTAL VOLUMES :	NL	NT	NR	NU	SL	ST	SR	SU	EL	ET	ER	EU	WL	WT	WR	WU		TOTAL
APPROACH %'s :	0	0	0	0	0	0	7	0	8	8	0	0	0	2	6	0	0	31
	04:00 PM - 05:00 PM				0.00%	0.00%	100.00%	0.00%	50.00%	50.00%	0.00%	0.00%	0.00%	0.00%	25.00%	75.00%	0.00%	
PEAK HR :					0	0	6	0	2	5	0	0	0	1	2	0		16
PEAK HR VOL :	0	0	0	0	0.000	0.000	0.500	0.000	0.500	0.417	0.000	0.000	0.000	0.250	0.500	0.000		0.500
PEAK HR FACTOR :	0.00	0.000	0.000	0.000	0.500				0.583				0.375					

National Data & Surveying Services

Intersection Turning Movement Count

Location: Plantel Nurseries West Dwy & Clark Ave
City: Santa Maria
Control: No Control

Project ID: 20-02013-001
Date: 5/7/2020

Total

NS/EW Streets:	Plantel Nurseries West Dwy				Plantel Nurseries West Dwy				Clark Ave				Clark Ave							
AM	NORTHBOUND				SOUTHBOUND				EASTBOUND				WESTBOUND				TOTAL			
	NL	NT	NR	NU	SL	ST	SR	SU	EL	ET	ER	EU	WL	WT	WR	WU				
7:00 AM	0	0	0	0	0	1	0	0	0	0	19	0	0	0	14	0	0	33		
7:15 AM	0	0	0	0	0	0	0	0	0	22	0	0	0	9	0	0	31			
7:30 AM	0	0	0	0	0	0	0	0	0	34	0	0	0	17	0	0	51			
7:45 AM	0	0	0	0	0	0	0	0	0	37	0	0	0	9	0	0	46			
8:00 AM	0	0	0	0	0	0	0	0	1	25	0	0	0	10	0	0	36			
8:15 AM	0	0	0	0	0	0	0	0	0	34	0	0	0	14	0	0	48			
8:30 AM	0	0	0	0	0	0	0	0	0	18	0	0	0	13	0	0	31			
8:45 AM	0	0	0	0	0	0	1	0	0	16	0	0	0	14	0	0	31			
TOTAL VOLUMES :	NL	NT	NR	NU	SL	ST	SR	SU	EL	ET	ER	EU	WL	WT	WR	WU	TOTAL			
APPROACH %'s :	0	0	0	0	0	0	1	0	1	205	0	0	0	100	0	0	307			
					0.00%	0.00%	100.00%	0.00%	0.49%	99.51%	0.00%	0.00%	0.00%	100.00%	0.00%	0.00%				
PEAK HR :	07:30 AM - 08:30 AM																TOTAL			
PEAK HR VOL :	0	0	0	0	0	0	0	0	1	130	0	0	0	50	0	0	181			
PEAK HR FACTOR :	0.000	0.000	0.000	0.000	0.000	0.000	0.000	0.000	0.250	0.878	0.000	0.000	0.000	0.735	0.000	0.000	0.887			
									0.885				0.735							
PM	NORTHBOUND				SOUTHBOUND				EASTBOUND				WESTBOUND				TOTAL			
	NL	NT	NR	NU	SL	ST	SR	SU	EL	ET	ER	EU	WL	WT	WR	WU				
4:00 PM	0	0	0	0	0	0	0	0	0	14	0	0	0	45	0	0	59			
4:15 PM	0	0	0	0	0	0	0	0	0	17	0	0	0	36	0	0	53			
4:30 PM	0	0	0	0	0	0	1	0	0	19	0	0	0	41	0	0	61			
4:45 PM	0	0	0	0	0	0	0	0	0	20	0	0	0	31	0	0	51			
5:00 PM	0	0	0	0	0	0	0	0	0	15	0	0	0	21	0	0	36			
5:15 PM	0	0	0	0	0	0	0	0	0	14	0	0	0	18	0	0	32			
5:30 PM	0	0	0	0	0	0	0	0	0	21	0	0	0	10	0	0	31			
5:45 PM	0	0	0	0	0	0	0	0	1	14	0	0	0	19	0	0	34			
TOTAL VOLUMES :	NL	NT	NR	NU	SL	ST	SR	SU	EL	ET	ER	EU	WL	WT	WR	WU	TOTAL			
APPROACH %'s :	0	0	0	0	0	0	1	0	1	134	0	0	0	221	0	0	357			
					0.00%	0.00%	100.00%	0.00%	0.74%	99.26%	0.00%	0.00%	0.00%	100.00%	0.00%	0.00%				
PEAK HR :	04:00 PM - 05:00 PM																TOTAL			
PEAK HR VOL :	0	0	0	0	0	0	1	0	0	70	0	0	0	153	0	0	224			
PEAK HR FACTOR :	0.000	0.000	0.000	0.000	0.000	0.000	0.250	0.000	0.000	0.875	0.000	0.000	0.000	0.850	0.000	0.000	0.918			
									0.250				0.875				0.850			

National Data & Surveying Services

Intersection Turning Movement Count

Location: Plantel Nurseries West Dwy & Clark Ave
City: Santa Maria
Control: No Control

Project ID: 20-02013-001
Date: 5/7/2020

HT

NS/EW Streets:	Plantel Nurseries West Dwy				Plantel Nurseries West Dwy				Clark Ave				Clark Ave				
AM	NORTHBOUND				SOUTHBOUND				EASTBOUND				WESTBOUND				TOTAL
	NL	NT	NR	NU	SL	ST	SR	SU	EL	ET	ER	EU	WL	WT	WR	WU	
7:00 AM	0	0	0	0	0	0	0	0	0	3	0	0	0	2	0	0	5
7:15 AM	0	0	0	0	0	0	0	0	0	0	0	0	0	1	0	0	1
7:30 AM	0	0	0	0	0	0	0	0	0	1	0	0	0	3	0	0	4
7:45 AM	0	0	0	0	0	0	0	0	0	2	0	0	0	1	0	0	3
8:00 AM	0	0	0	0	0	0	0	0	0	0	0	0	0	0	0	0	0
8:15 AM	0	0	0	0	0	0	0	0	0	1	0	0	0	3	0	0	4
8:30 AM	0	0	0	0	0	0	0	0	0	3	0	0	0	3	0	0	6
8:45 AM	0	0	0	0	0	0	0	0	0	4	0	0	0	3	0	0	7
TOTAL VOLUMES :	NL	NT	NR	NU	SL	ST	SR	SU	EL	ET	ER	EU	WL	WT	WR	WU	TOTAL
APPROACH %'s :	0	0	0	0	0	0	0	0	0	14	0	0	0	16	0	0	30
PEAK HR :	07:30 AM - 08:30 AM																TOTAL
PEAK HR VOL :	0	0	0	0	0	0	0	0	0	4	0	0	0	7	0	0	11
PEAK HR FACTOR :	0.000	0.000	0.000	0.000	0.000	0.000	0.000	0.000	0.000	0.500	0.000	0.000	0.000	0.583	0.000	0.000	0.688
										0.500				0.583			
PM	NORTHBOUND				SOUTHBOUND				EASTBOUND				WESTBOUND				TOTAL
	NL	NT	NR	NU	SL	ST	SR	SU	EL	ET	ER	EU	WL	WT	WR	WU	
4:00 PM	0	0	0	0	0	0	0	0	0	1	0	0	0	3	0	0	4
4:15 PM	0	0	0	0	0	0	0	0	0	0	0	0	0	2	0	0	2
4:30 PM	0	0	0	0	0	0	1	0	0	4	0	0	0	1	0	0	6
4:45 PM	0	0	0	0	0	0	0	0	0	1	0	0	0	1	0	0	2
5:00 PM	0	0	0	0	0	0	0	0	0	3	0	0	0	0	0	0	3
5:15 PM	0	0	0	0	0	0	0	0	0	3	0	0	0	1	0	0	4
5:30 PM	0	0	0	0	0	0	0	0	0	0	0	0	0	1	0	0	1
5:45 PM	0	0	0	0	0	0	0	0	1	2	0	0	0	1	0	0	4
TOTAL VOLUMES :	NL	NT	NR	NU	SL	ST	SR	SU	EL	ET	ER	EU	WL	WT	WR	WU	TOTAL
APPROACH %'s :	0	0	0	0	0	0	1	0	1	14	0	0	0	10	0	0	26
PEAK HR :	04:00 PM - 05:00 PM																TOTAL
PEAK HR VOL :	0	0	0	0	0	0	1	0	0	6	0	0	0	7	0	0	14
PEAK HR FACTOR :	0.00	0.000	0.000	0.000	0.000	0.000	0.250	0.000	0.000	0.375	0.000	0.000	0.000	0.583	0.000	0.000	0.583
							0.250			0.375				0.583			

National Data & Surveying Services

Intersection Turning Movement Count

Location: Plantel Nurseries East Dwy & Clark Ave
City: Santa Maria
Control: No Control

Project ID: 20-02013-002
Date: 5/7/2020

Total

NS/EW Streets:	Plantel Nurseries East Dwy				Plantel Nurseries East Dwy				Clark Ave				Clark Ave				TOTAL
	NORTHBOUND				SOUTHBOUND				EASTBOUND				WESTBOUND				
AM	NL	NT	NR	NU	SL	ST	SR	SU	EL	ET	ER	EU	WL	WT	WR	WU	
7:00 AM	0	0	0	0	0	1	0	0	0	1	0	0	0	1	0	0	
7:15 AM	0	0	0	0	0	0	2	0	5	14	0	0	0	13	0	0	
7:30 AM	0	0	0	0	0	0	2	0	15	7	0	0	0	8	1	0	
7:45 AM	0	0	0	0	0	0	2	0	18	16	0	0	0	15	1	0	
8:00 AM	0	0	0	0	1	0	0	0	26	11	0	0	0	9	1	0	
8:15 AM	0	0	0	0	0	0	2	0	11	14	0	0	0	8	0	0	
8:30 AM	0	0	0	0	0	0	2	0	15	19	0	0	0	12	0	0	
8:45 AM	0	0	0	0	1	0	2	0	4	13	0	1	0	10	1	0	
	0	0	0	0	0	0	4	0	2	13	0	0	0	13	1	0	
TOTAL VOLUMES :	NL	NT	NR	NU	SL	ST	SR	SU	EL	ET	ER	EU	WL	WT	WR	WU	TOTAL
APPROACH %'s :	0	0	0	0	2	0	14	0	96	107	0	1	0	88	5	0	313
					12.50%	0.00%	87.50%	0.00%	47.06%	52.45%	0.00%	0.49%	0.00%	94.62%	5.38%	0.00%	
PEAK HR :	07:30 AM - 08:30 AM																TOTAL
PEAK HR VOL :	0	0	0	0	1	0	6	0	70	60	0	0	0	44	2	0	183
PEAK HR FACTOR :	0.000	0.000	0.000	0.000	0.250	0.000	0.750	0.000	0.673	0.789	0.000	0.000	0.000	0.733	0.500	0.000	0.880
							0.875				0.878				0.719		
PM	NORTHBOUND				SOUTHBOUND				EASTBOUND				WESTBOUND				TOTAL
	NL	NT	NR	NU	SL	ST	SR	SU	EL	ET	ER	EU	WL	WT	WR	WU	
4:00 PM	0	0	0	0	0	1	0	0	0	1	0	0	0	1	0	0	
4:15 PM	0	0	0	0	3	0	17	0	1	16	0	0	0	19	1	0	
4:30 PM	0	0	0	0	0	0	19	0	4	15	0	0	0	23	0	0	
4:45 PM	0	0	0	0	1	0	18	0	2	18	0	0	0	12	0	0	
5:00 PM	0	0	0	0	1	0	7	0	1	14	0	0	0	14	1	0	
5:15 PM	0	0	0	0	0	0	5	0	4	10	0	0	0	13	0	0	
5:30 PM	0	0	0	0	0	0	2	0	0	21	0	0	0	7	0	0	
5:45 PM	0	0	0	0	0	0	6	0	1	13	0	0	0	14	0	0	
TOTAL VOLUMES :	NL	NT	NR	NU	SL	ST	SR	SU	EL	ET	ER	EU	WL	WT	WR	WU	TOTAL
APPROACH %'s :	0	0	0	0	5	0	86	0	16	118	0	0	0	135	3	0	363
					5.49%	0.00%	94.51%	0.00%	11.94%	88.06%	0.00%	0.00%	0.00%	97.83%	2.17%	0.00%	
PEAK HR :	04:00 PM - 05:00 PM																TOTAL
PEAK HR VOL :	0	0	0	0	4	0	66	0	10	60	0	0	0	87	2	0	229
PEAK HR FACTOR :	0.000	0.000	0.000	0.000	0.333	0.000	0.868	0.000	0.625	0.833	0.000	0.000	0.000	0.659	0.500	0.000	0.939
							0.875				0.875				0.654		

National Data & Surveying Services

Intersection Turning Movement Count

Location: Plantel Nurseries East Dwy & Clark Ave
City: Santa Maria
Control: No Control

Project ID: 20-02013-002
Date: 5/7/2020

HT

NS/EW Streets:	Plantel Nurseries East Dwy				Plantel Nurseries East Dwy				Clark Ave				Clark Ave							
AM	NORTHBOUND				SOUTHBOUND				EASTBOUND				WESTBOUND				TOTAL			
	NL	NT	NR	NU	SL	ST	SR	SU	EL	ET	ER	EU	WL	WT	WR	WU				
7:00 AM	0	0	0	0	0	0	1	0	0	0	3	0	0	0	1	0	0	0	5	
7:15 AM	0	0	0	0	0	0	0	0	0	0	0	0	0	1	0	0	0	0	1	
7:30 AM	0	0	0	0	0	0	0	0	0	1	0	0	0	3	0	0	0	0	4	
7:45 AM	0	0	0	0	0	0	0	0	0	2	0	0	0	1	0	0	0	0	3	
8:00 AM	0	0	0	0	0	0	0	0	0	0	0	0	0	0	0	0	0	0	0	
8:15 AM	0	0	0	0	0	0	1	0	0	1	0	0	0	2	0	0	0	0	4	
8:30 AM	0	0	0	0	1	0	1	0	0	3	0	0	0	2	0	0	0	0	7	
8:45 AM	0	0	0	0	0	0	3	0	0	3	0	0	0	1	0	0	0	0	7	
TOTAL VOLUMES :	NL	NT	NR	NU	SL	ST	SR	SU	EL	ET	ER	EU	WL	WT	WR	WU			TOTAL	
APPROACH %'s :	0	0	0	0	1	0	6	0	0	13	0	0	0	11	0	0			31	
PEAK HR :	07:30 AM - 08:30 AM																			
PEAK HR VOL :	0	0	0	0	0	0	1	0	0	4	0	0	0	6	0	0			11	
PEAK HR FACTOR :	0.000	0.000	0.000	0.000	0.000	0.000	0.250	0.000	0.000	0.500	0.000	0.000	0.000	0.500	0.000	0.000			0.688	
							0.250				0.500				0.500					

PM	NORTHBOUND				SOUTHBOUND				EASTBOUND				WESTBOUND				TOTAL			
	NL	NT	NR	NU	SL	ST	SR	SU	EL	ET	ER	EU	WL	WT	WR	WU				
4:00 PM	0	0	0	0	0	0	1	0	1	0	0	0	0	2	0	0	0	0	4	
4:15 PM	0	0	0	0	1	0	1	0	0	0	0	0	0	1	1	0	0	0	4	
4:30 PM	0	0	0	0	0	0	1	0	3	1	0	0	0	0	0	0	0	0	5	
4:45 PM	0	0	0	0	0	0	1	0	0	1	0	0	0	0	0	0	0	0	2	
5:00 PM	0	0	0	0	1	0	0	0	1	2	0	0	0	0	0	1	0	0	5	
5:15 PM	0	0	0	0	0	0	1	0	3	0	0	0	0	0	0	0	0	0	4	
5:30 PM	0	0	0	0	0	0	1	0	0	0	0	0	0	0	0	0	0	0	1	
5:45 PM	0	0	0	0	0	0	0	0	1	1	0	0	0	0	1	0	0	0	3	
TOTAL VOLUMES :	NL	NT	NR	NU	SL	ST	SR	SU	EL	ET	ER	EU	WL	WT	WR	WU			TOTAL	
APPROACH %'s :	0	0	0	0	2	0	6	0	9	5	0	0	0	4	2	0			28	
PEAK HR :	04:00 PM - 05:00 PM																			
PEAK HR VOL :	0	0	0	0	1	0	4	0	4	2	0	0	0	3	1	0			15	
PEAK HR FACTOR :	0.00	0.000	0.000	0.000	0.250	0.000	1.000	0.000	0.333	0.500	0.000	0.000	0.000	0.375	0.250	0.000			0.750	
							0.625				0.375				0.500					

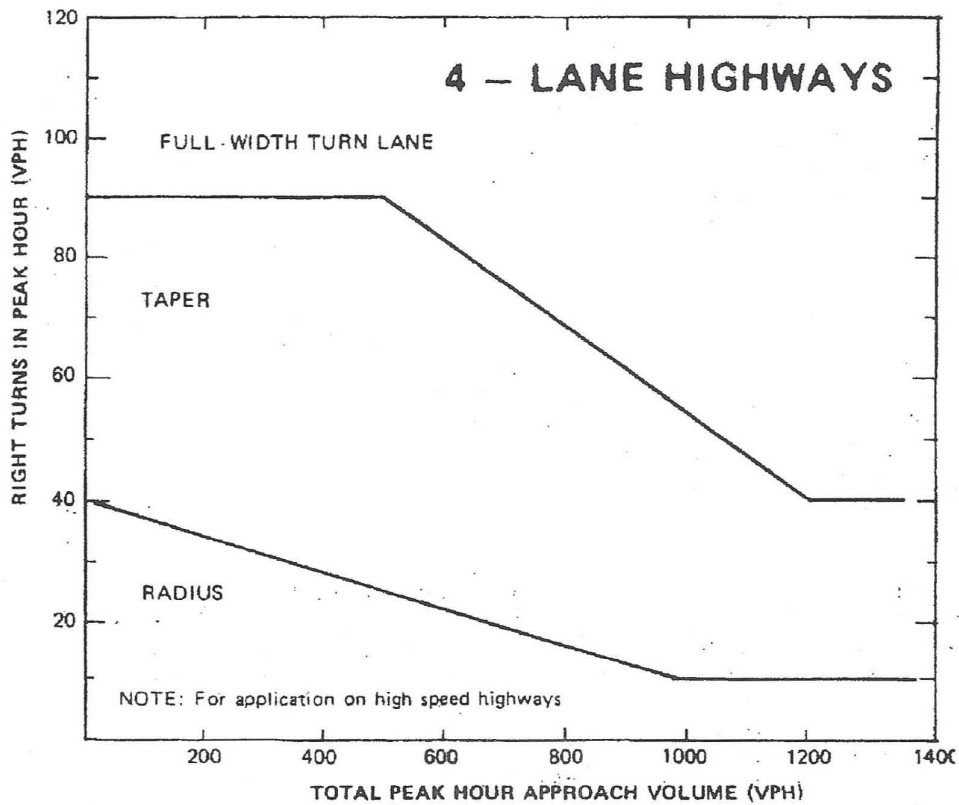
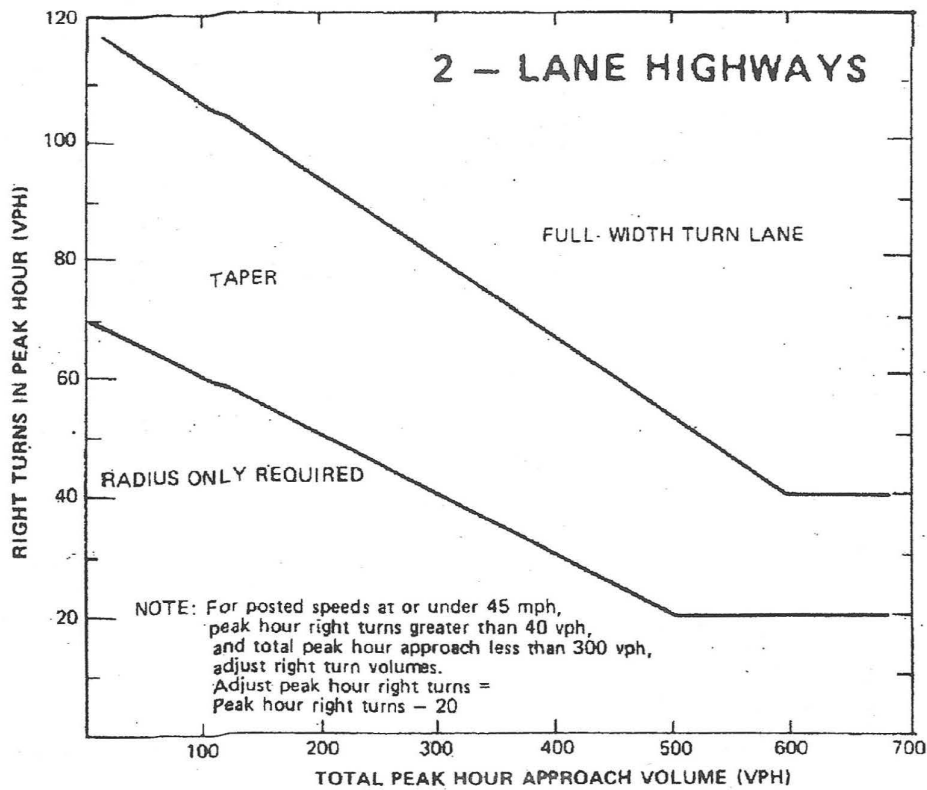
PINNACLE TRAFFIC ENGINEERING

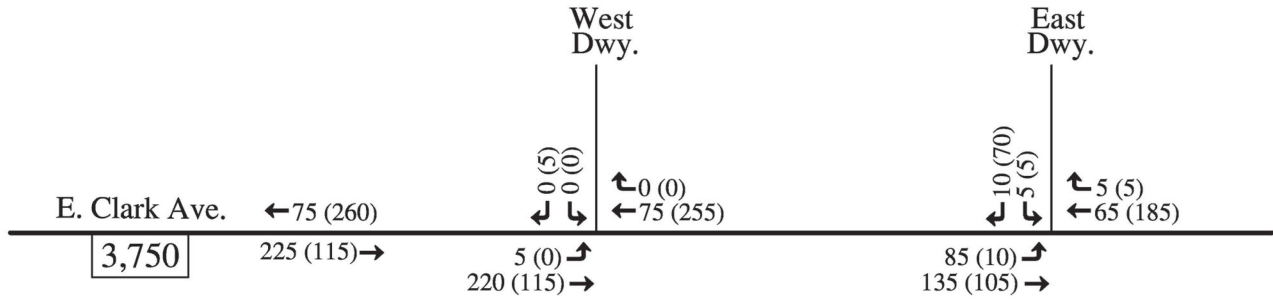
9452 Telephone Road, #440 • Ventura, CA 93004 • (805) 644-9260

PinnacleTE.com

Plantel Nurseries Exp. Project; Santa Barbara County, CA Summary of Dwy. Traffic Count Data and Trip Rates (May 6th & 7th, 2020)

<u>May 6, 2020 (Wednesday)</u>	<u>West Dwy.</u>	<u>East Dwy.</u>	<u>Total</u>
AM Peak Hour			
In:	1	85	86
Out :	<u>0</u>	<u>11</u>	<u>11</u>
Totals:	1	96	97
Total No. of Employees: 142 (Plantel Emp. 125 + Berry Farm 17)	Total AM Peak Hour Trip Rate per Employee:		<u>0.6831</u>
	Trip Rate per Emp. IN -		0.6056
	Trip Rate per Emp. OUT -		0.0775
PM Peak Hour			
In:	0	7	7
Out :	<u>1</u>	<u>67</u>	<u>68</u>
Totals:	1	74	75
Total No. of Employees: 142 (Plantel Emp. 125 + Berry Farm 17)	Total PM Peak Hour Trip Rate per Employee:		<u>0.5282</u>
	Trip Rate per Emp. IN -		0.0493
	Trip Rate per Emp. OUT -		0.4789
<u>May 7, 2020 (Thursday)</u>	<u>West Dwy.</u>	<u>East Dwy.</u>	<u>Total</u>
AM Peak Hour			
In:	1	72	73
Out :	<u>0</u>	<u>7</u>	<u>7</u>
Totals:	1	79	80
Total No. of Employees: 145 (Plantel Emp. 126 + Berry Farm 19)	Total AM Peak Hour Trip Rate per Employee:		<u>0.5517</u>
	Trip Rate per Emp. IN -		0.5034
	Trip Rate per Emp. OUT -		0.0483
PM Peak Hour			
In:	0	12	12
Out :	<u>1</u>	<u>70</u>	<u>71</u>
Totals:	1	82	83
Total No. of Employees: 145 (Plantel Emp. 126 + Berry Farm 19)	Total PM Peak Hour Trip Rate per Employee:		<u>0.5724</u>
	Trip Rate per Emp. IN -		0.0828
	Trip Rate per Emp. OUT -		0.4897
<u>May 6 & 7, 2020 (Both Days)</u>	<u>West Dwy.</u>	<u>East Dwy.</u>	<u>Total</u>
AM Peak Hour			
In:	2	157	159
Out :	<u>0</u>	<u>18</u>	<u>18</u>
Totals:	2	175	177
Total No. of Employees (2 Days): 287 (Plantel Emp. 251 + Berry Farm 36)	Total AM Peak Hour Trip Rate per Employee:		<u>0.6167</u>
	Trip Rate per Emp. IN -		0.5540
	Trip Rate per Emp. OUT -		0.0627
PM Peak Hour			
In:	0	19	19
Out :	<u>2</u>	<u>137</u>	<u>139</u>
Totals:	2	156	158
Total No. of Employees (2 Days): 287 (Plantel Emp. 251 + Berry Farm 36)	Total PM Peak Hour Trip Rate per Employee:		<u>0.5505</u>
	Trip Rate per Emp. IN -		0.0662
	Trip Rate per Emp. OUT -		0.4843

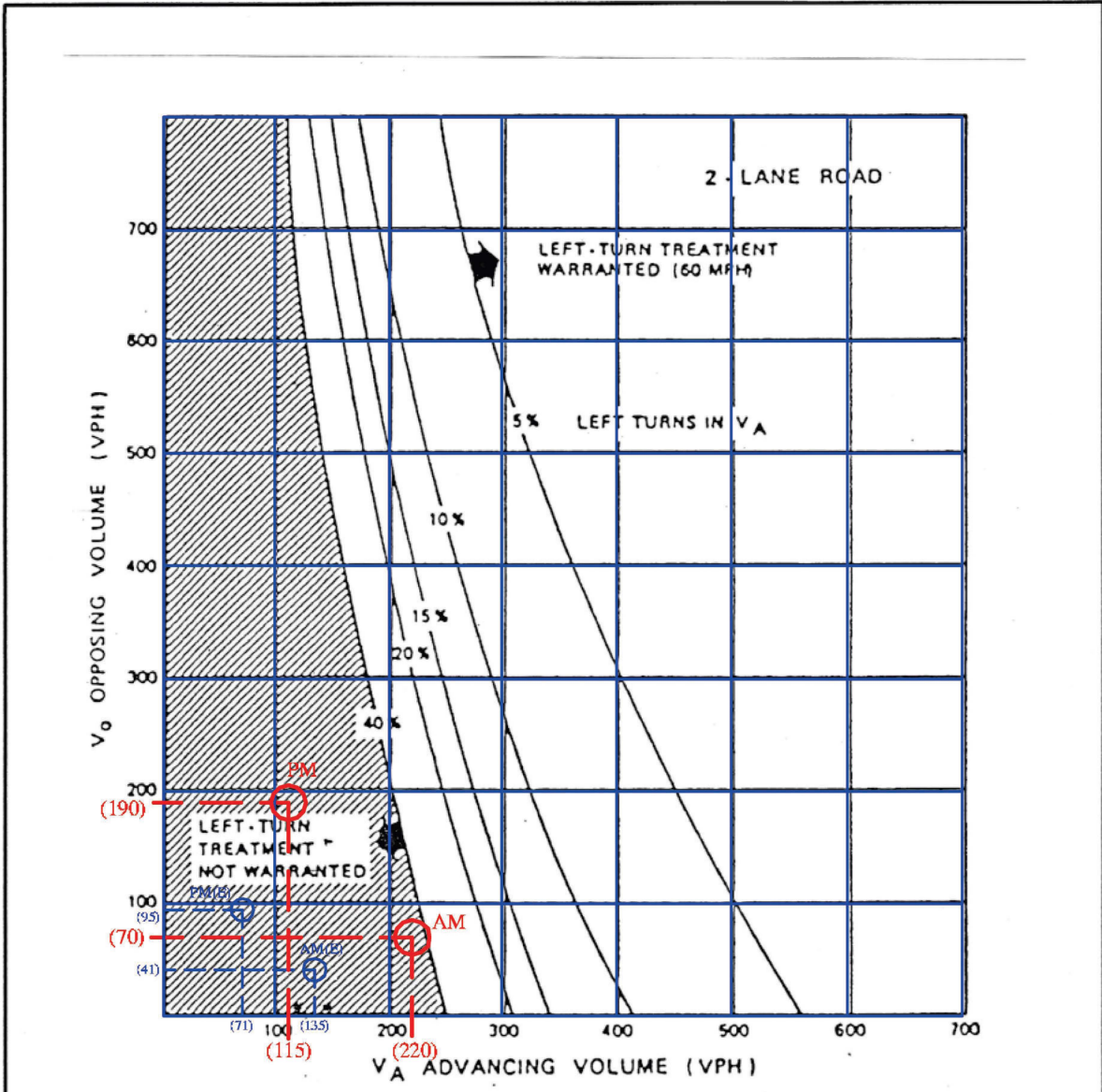




LEGEND

- ← 00 (00) = AM (PM) Peak Hour Traffic Volume
- 0,000 = Average Daily Traffic (ADT)





Buildout Traffic Volumes (Figure 2)

Advancing Volume (AM) - 220 vph (39% Left Turns) - NO
 Opposing Volume (AM) - 70 vph

Advancing Volume (PM) - 115 vph (9% Left Turns) - NO
 Opposing Volume (PM) - 190 vph

**PINNACLE
 TRAFFIC
 ENGINEERING**

**2 LANE ROADWAY (60 MPH)
 LEFT-TURN LANE WARRANT CRITERIA**

930 San Benito Street - Hollister, CA 95023
 (831) 638-9260 / FAX (831) 638-9268