

Appendix B

Archaeological Survey Report

San Marcos Costco Wholesale Fuel Facility Project

Project 19-5105-02

Archaeological Survey Report

June 2024 | 03605.00004.001

Prepared for:

Costco Wholesale
999 Lake Drive
Issaquah, WA 98027

Submitted to:

City of San Marcos
1 Civic Center Drive
San Marcos, CA 92069

Prepared by:



Mary Robbins-Wade
Cultural Resources Group Manager

HELIX Environmental Planning, Inc.
7578 El Cajon Boulevard
La Mesa, CA 91942

This page intentionally left blank

Table of Contents

<u>Section</u>	<u>Page</u>
SUMMARY.....	S-1
1.0 INTRODUCTION.....	1
1.1 Project Location	1
1.2 Project Description	1
1.3 Regulatory Framework	1
1.3.1 State.....	1
1.3.2 Local.....	2
2.0 PROJECT SETTING.....	3
2.1 Natural Setting.....	3
2.2 Cultural Setting	4
2.2.1 Archaeological Context.....	4
2.2.2 Historical Context	9
2.2.3 Ethnohistoric Context	11
3.0 METHODS.....	13
4.0 FINDINGS.....	14
4.1 Previous Surveys	14
4.2 Previously Recorded Resources	18
4.3 Other Archival Research	22
4.4 Native American Contact Program	22
4.5 Survey Results.....	23
5.0 DISCUSSION.....	23
6.0 MANAGEMENT CONSIDERATIONS.....	24
7.0 REFERENCES.....	25

Table of Contents (cont.)

LIST OF APPENDICES

- A Resumes
- B Records Search Results (Confidential, bound separately)
- C Native American Correspondence (Confidential, bound separately)
- D Plates

LIST OF FIGURES

<u>No.</u>	<u>Title</u>	<u>Follows Page</u>
	Regional Location.....	2
	Aerial Photograph.....	2
	USGS Topography.....	2

LIST OF TABLES

<u>No.</u>	<u>Title</u>	<u>Page</u>
1	Previous Studies Within One Mile Of The Project Area.....	14
2	Previously Recorded Resources Within One Mile Of The Project Area.....	19
3	Native American Contact Program Responses.....	22

Acronyms and Abbreviations

AMSL	Above Mean Sea Level
APE	Area of Potential Effects
APN	Assessor's Parcel Number
BP	Before Present
Campo	Campo Band of Diegueno Mission Indians
CCR	California Code of Regulations
CEQA	California Environmental Quality Act
City	City of San Marcos
CRHR	California Register of Historical Resources
EA	Environmental Assessment
EID	Escondido Irrigation District
HABS	Historic American Building Survey
HAER	Historic American Engineering Record
HELIX	HELIX Environmental Planning, Inc.
HRER	Historic Resources Evaluation Report
NAHC	Native American Heritage Commission
NRHP	National Register of Historic Places
OHP	Office of Historic Preservation
Pechanga	Pechanga Band of Indians
PI	Principal Investigator
PRC	Public Resources Code
project	Costco Wholesale Fuel Facility Project
Rincon	Rincon Band of Luiseño Indians
San Luis Rey	San Luis Rey Band of Mission Indians
San Pasqual	San Pasqual Band of Mission Indians
SCIC	South Coastal Information Center
SR	State Route
USGS	U.S. Geological Survey

This page intentionally left blank

SUMMARY

Costco Wholesale contracted HELIX Environmental Planning, Inc. (HELIX) to provide cultural resources services for the San Marcos Costco Wholesale Fuel Facility Project (project) in the City of San Marcos (City), San Diego County, California. The project is the construction of a new fuel facility at the existing Costco Business Center warehouse at 150 South Bent Avenue. HELIX conducted a cultural resources study, including a records search, Sacred Lands File search, Native American outreach, a review of historic aerial photographs and maps, and a pedestrian survey. This report details the methods and results of the cultural resources study and has been prepared to comply with the California Environmental Quality Act (CEQA) and the guidelines of the City of San Marcos.

The records search conducted at the South Coastal Information Center (SCIC) on September 25, 2023, indicated that 81 previous cultural resources studies have been conducted within one mile of the project area, five of which overlap with the project area. The records search results also indicated that 56 cultural resources have been previously recorded within one mile of the project area; however, no sites have been recorded within the project itself. The Sacred Lands File search produced positive results, and Tribal responses to requests for information noted that the project is sensitive for cultural resources.

The field investigations included an intensive pedestrian survey of the study area by a HELIX archaeologist and two Luiseño Native American monitors on December 1, 2023. The survey did not result in the identification of any cultural material within the project area.

Based on the results of the current study, no historic properties, as defined by CEQA, will be affected by the project. However, due to the cultural sensitivity of the project region and the alluvial setting of the project site, it is recommended that grading activities be monitored by a qualified archaeologist and a Native American monitor.

This page intentionally left blank

1.0 INTRODUCTION

Costco Wholesale contracted HELIX Environmental Planning, Inc. (HELIX) to provide cultural resources services for the San Marcos Costco Wholesale Fuel Facility Project (project) in the City of San Marcos (City), San Diego County, California. The project is the construction of a new fuel facility at the existing Costco Business Center warehouse at 150 South Bent Avenue. HELIX conducted a cultural resources study, including a records search, Sacred Lands File search, Native American outreach, a review of historic aerial photographs and maps, and a pedestrian survey. This report details the methods and results of the cultural resources study and has been prepared to comply with the California Environmental Quality Act (CEQA) and the guidelines of the City of San Marcos.

1.1 PROJECT LOCATION

The project is located at 150 South Bent Avenue, 0.18 miles south of State Route (SR) 78, at the intersection of South Bent Avenue and San Marcos Blvd. (Figure 1, *Regional Location*) within unsectioned lands of the Los Vallecitos land grant, on the U.S. Geological Survey (USGS) 7.5' San Marcos quadrangle (Figure 2, *USGS Topography* and Figure 3, *Aerial Photograph*). The 14.3-acre project falls within Assessor's Parcel Number (APN) 219-331-43-00. The property is currently in use as a Costco Business Center with a warehouse building, support facilities, parking, and landscaped areas.

1.2 PROJECT DESCRIPTION

The project entails the construction of a new fuel facility in the northern portion of the paved parking lot at the existing Costco Business Center warehouse located at 150 South Bent Avenue in the City of San Marcos. The proposed fuel facility would include an approximately 16,000-square-foot fuel dispenser canopy, 18 multi-product dispensers (36 fueling positions), three 40,000-gallon underground gasoline storage tanks, one 1,500-gallon underground additive tank, a controller enclosure, and associated utility and landscaping improvements.

The new fuel facility would provide for approximately 160 feet of usable queue space behind the dispensers for up to approximately 48 vehicles to line up and wait for available fuel dispensers. The project would remove approximately 200 surface parking spaces and ornamental landscaping. Some existing utility facilities (lighting and utility boxes) would also require removal or relocation. Access to the new fuel facility would be provided internally and directed one way, with ingress at the southwestern portion of the facility and egress at the northwestern portion. Fuel trucks would access the facility via a one-way route from Grand Avenue, South Bent Avenue, around the south and west sides of the warehouse building, to the fuel facility, and exit onto Linda Vista Road.

1.3 REGULATORY FRAMEWORK

1.3.1 State

The CEQA, Public Resources Code (PRC) 21084.1, and California Code of Regulations (CCR) Title 14 Section 15064.5 address determining the significance of impacts to archaeological and historic resources and discuss significant cultural resources as "historical resources," which are defined as:

- resource(s) listed or determined eligible by the State Historical Resources Commission for listing in the California Register of Historical Resources (CRHR; 14 CCR Section 15064.5[a][1])
- resource(s) either listed in the National Register of Historic Places (NRHP) or in a “local register of historical resources” or identified as significant in a historical resource survey meeting the requirements of Section 5024.1(g) of the PRC, unless “the preponderance of evidence demonstrates that it is not historically or culturally significant” (14 CCR Section 15064.5[a][2])
- resources determined by the Lead Agency to meet the criteria for listing on the CRHR (14 CCR Section 15064.5[a][3])

For listing in the CRHR, a historical resource must be significant at the local, state, or national level under one or more of the following four criteria:

1. It is associated with events that have made a significant contribution to the broad patterns of local or regional history, or the cultural heritage of California or the United States;
2. It is associated with the lives of persons important to local, California, or national history;
3. It embodies the distinctive characteristics of a type, period, region, or method of construction, or represents the work of a master or possesses high artistic values;
4. It has yielded or has the potential to yield information important to the prehistory or history of the local area, California, or the nation.

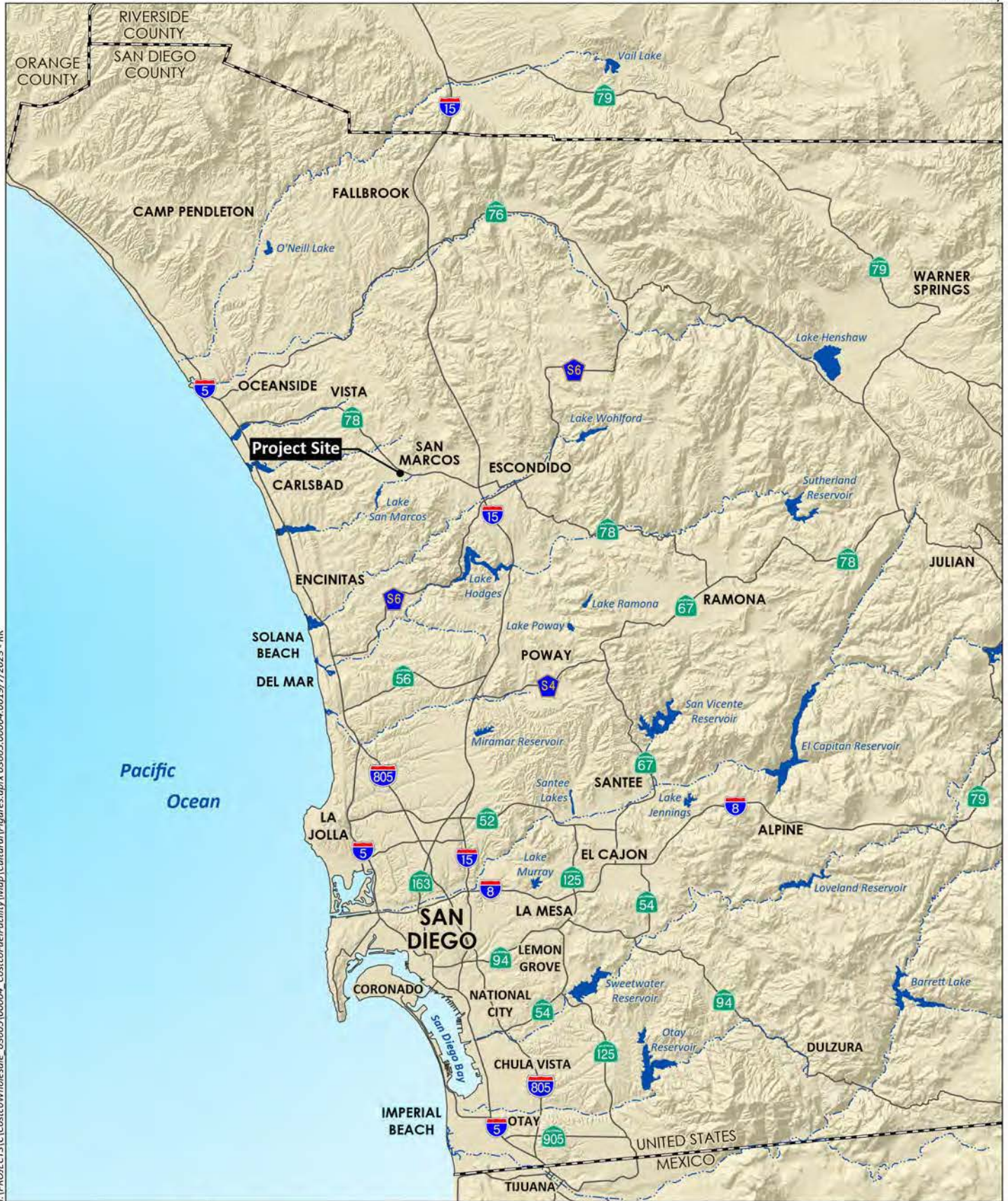
Under 14 CCR Section 15064.5(a)(4), a resource may also be considered a “historical resource” for the purposes of CEQA at the discretion of the lead agency.

Significant resources must retain enough of their historic character or appearance to be recognizable as historical resources and to convey the reasons for their significance. Resource integrity, which is the authenticity of a historical resource’s physical identity evidenced by the survival of characteristics that existed during the resource’s period of significance, is evaluated with regard to the retention of location, design, setting, materials, workmanship, feeling, and association. In an archaeological deposit, integrity is assessed with reference to the preservation of material constituents and their culturally and historically meaningful spatial relationships. A resource must also be judged with reference to the particular CRHR criteria under which it is proposed for eligibility.

1.3.2 Local

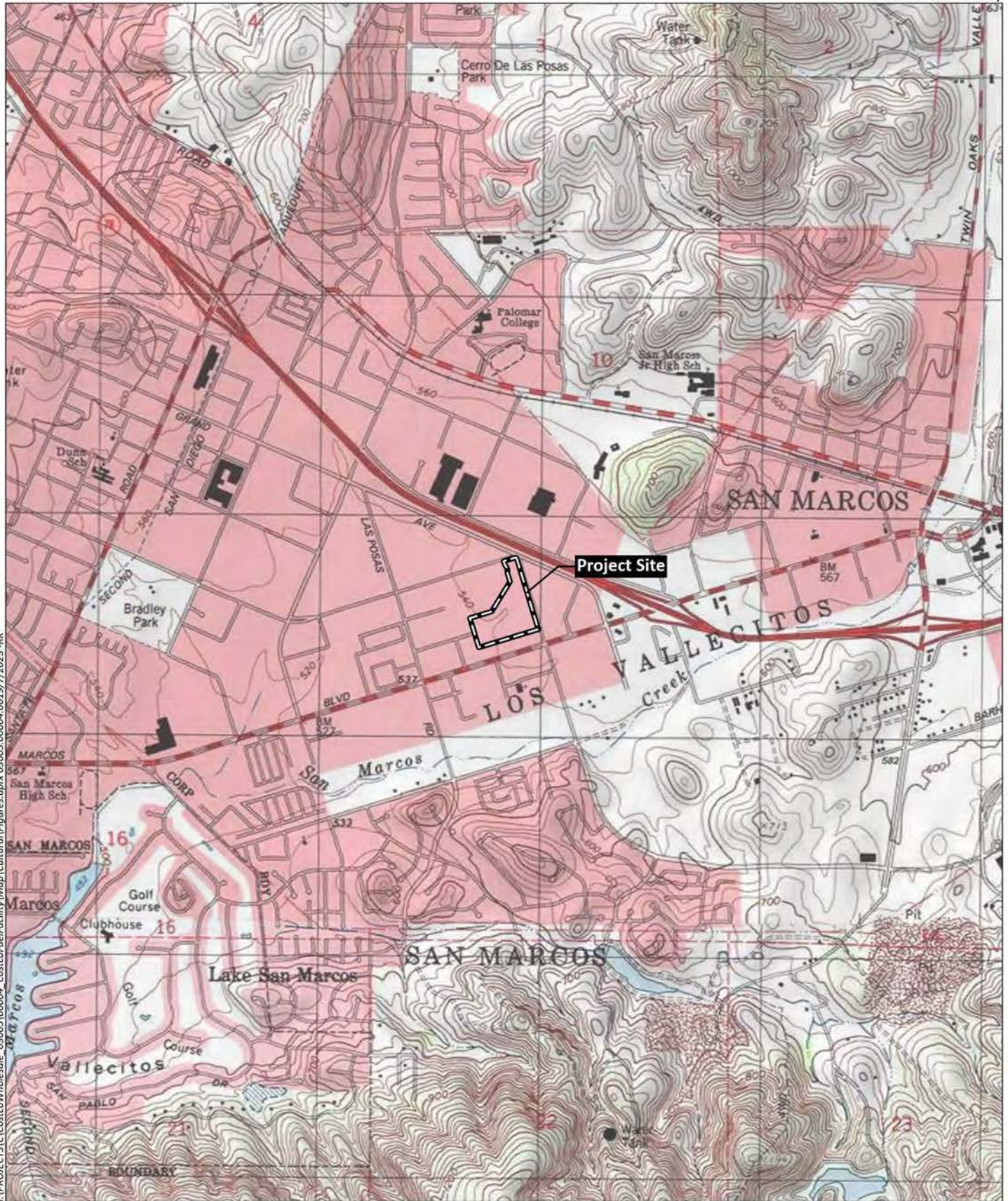
1.3.2.1 City of San Marcos General Plan

The City of San Marcos General Plan (City of San Marcos 2012) identifies cultural resources as archaeological and historical sites and districts, historic buildings and structures, cultural landscapes, and sites and resources of concern to local Native Americans and other ethnic groups. Three historic preservation policies are presented under Goal COS-11 in the General Plan:



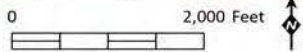
I:\PROJECTS\Costco\Wholesale - 03605\00004 - CostcoFuel\Facility\Map\Cultural\Figures.aprx 03605.000004.0019\7/2023 - RK

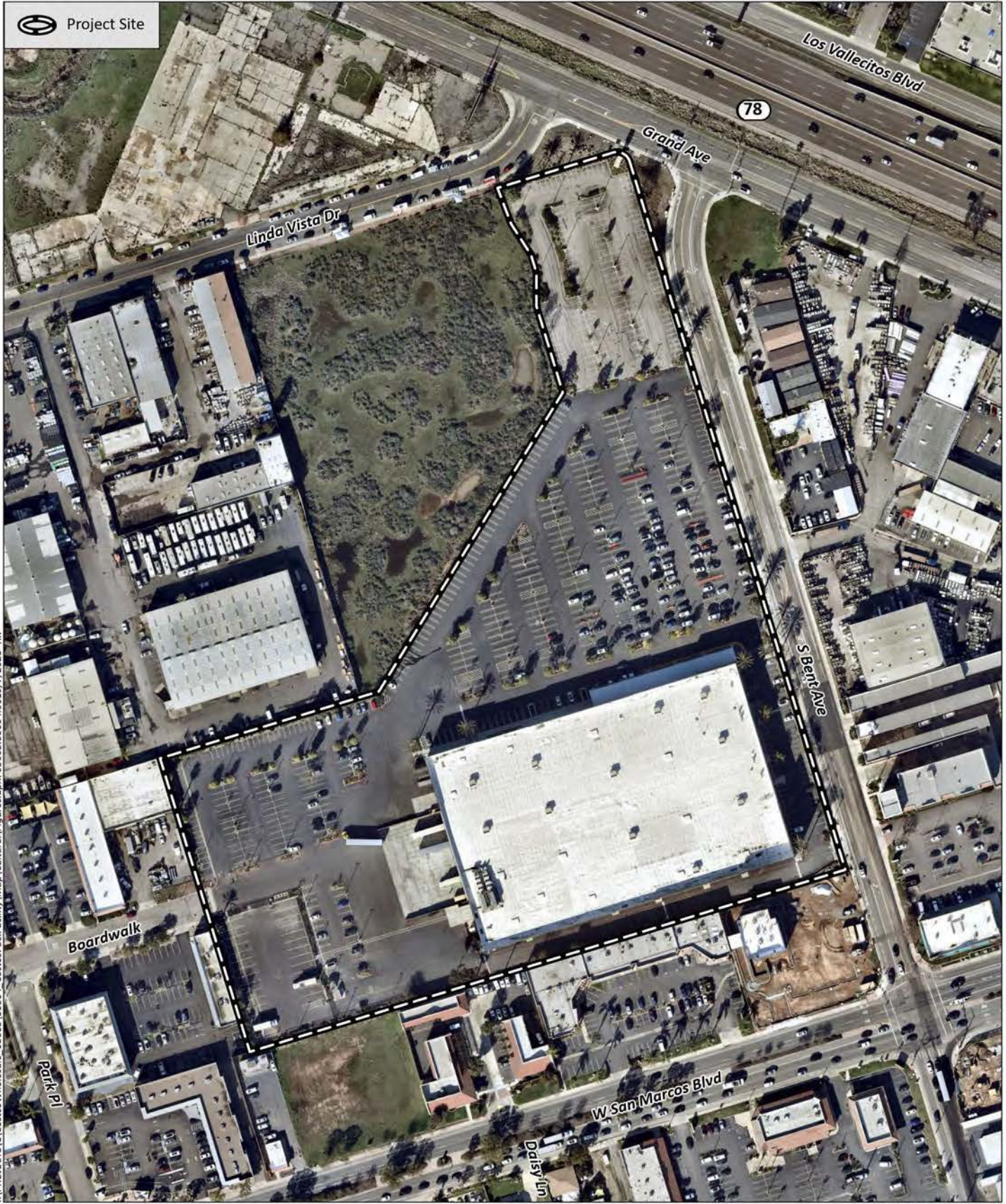
Source: Base Map Layers (SanGIS, 2016)



I:\PROJECTS\Costco\Wholesale_03605\00004_CostcoFuelFacility\Map\Cultural\Figures.aprx 03605.00004.0019\7\2023 -RK

Source: San Marcos 7.5' Quad (USGS)





I:\PROJECTS\Costco\Wholesale_03605\00004_CostcoFuelFacility\Map\Cultural\Figures.aprx 03605.00004.0019\7\2023-RK

Goal COS-11: Continue to identify and evaluate cultural, historic, archeological, paleontological, and architectural resources for protection from demolition and inappropriate actions.

Policy COS-11.1: Identify and protect historic and cultural resources, including individual properties, districts, and sites (e.g., archaeological sites) in compliance with CEQA.

Policy COS-11.2: Prohibit the demolition or removal of a historic structure without evaluation of the condition of the structure, the cost of rehabilitation, and the feasibility of alternatives to preservation in place, including but not limited to relocation, or reconstruction offsite, and/or photo-preservation.

Policy COS-11.3: Identify opportunities for adaptive reuse of historic sites and buildings to preserve and maintain their viability.

1.3.2.2 City of San Marcos Archaeological and Historical Resources Consultant Guidelines

In 2023, the City published guidelines for third-party consultants who prepare archaeological or architectural history inventories, surveys, evaluations, and other technical documents. The guidelines outline the minimum qualifications for Principal Investigators, guidance for the preparation of records searches and Tribal outreach, stipulations for cultural resources surveys, and the preparation of reporting (City of San Marcos 2023).

2.0 PROJECT SETTING

2.1 NATURAL SETTING

The project area is situated in the western foothills of the Peninsular Ranges and within the coastal plain of western San Diego County, where the climate is characterized as semi-arid steppe, with warm, dry summers and cool, moist winters (Hall 2007; Pryde 2004). The elevation in the project area ranges from approximately 822 to 835 feet above mean sea level (AMSL). The Peninsular Ranges rise rapidly to an elevation of 6,142 feet AMSL at Palomar Mountain, approximately 21.5 miles to the northeast of the project area, while the San Marcos Mountains are directly south and reach an elevation of 2,127 feet AMSL. San Marcos Creek is located approximately 0.25 mile south of the project area, running west, where it becomes Lake San Marcos, located approximately 1.25 miles west-southwest of the project area. The Pacific coastline is approximately eight miles west of the project area.

Geologically, the project area is underlain by Eocene marine rocks, established between the Paleocene and Oligocene, and comprised of shale, sandstone, conglomerate, and limestone (Jennings et al. 1977; Weber 1963). One soil series, the Placentia series, is mapped for the project site. This series, which consists of moderately well-drained sandy loams that have a sandy clay subsoil, forms in granitic alluvium. The soil of this series mapped in the project area is Placentia sandy loam, thick surface, 2 to 9 percent slopes, and 0- to 2-percent slopes. This soil is gently to moderately sloping with a 20-inch to 30-inch surface layer (Bowman 1973:68-69). Areas immediately surrounding the project area include transportation infrastructure, residential, recreational/commercial, and industrial development.

Prehistorically, the natural vegetation in the project area vicinity likely consisted of coastal sage scrub, riparian woodland, and grassland communities, as well as, possibly, intermittent strips of the freshwater

marsh community along the major drainages. The coastal sage scrub community would have covered most of the foothill areas, with interspersed areas of native grasslands (*Stipa*, *Elymus*, *Poa*, *Muhlenbergia*). Plants of the coastal sage scrub community include California sagebrush (*Artemisia californica*), white sage (*Salvia apiana*), flat-top buckwheat (*Eriogonum fasciculatum*), broom baccharis (*Baccharis sarothroides*), wild onion (*Allium haematochiton*), laurel sumac (*Malosma laurina*), San Diego sunflower (*Bahiopsis laciniata*), golden-yarrow (*Eriophyllum confertiflorum*), sawtooth goldenbush (*Hazardia squarrosa*), yucca (*Yucca schidigera*, *Hesperoyucca whipplei*), prickly pear cactus (*Opuntia* sp.), and scrub oak (*Quercus dumosa*). Before historic and modern activities, major drainages such as the San Marcos Creek and Escondido Creek likely contained extensive stands of riparian communities, with plants such as sycamore (*Platanus racemosa*), Fremont cottonwood (*Populus fremontii*), coast live oak (*Quercus agrifolia*), willow (*Salix* sp.), cattail (*Typha latifolia*), bulrush (*Scirpus* spp.), mule fat (*Baccharis* spp.), and poison oak (*Toxicodendron diversiloba*). Plants common to fresh-water marsh include reed grass (*Phragmites australis*), marsh mallow (*Kosteletzkya virginic*), soft rush (*Juncus effusus*), pickerelweed (*Pontederia cordata*), narrow-leaved cattail (*Typha angustifolia*), and button bush (*Cephalanthus occidental*) (Beauchamp 1986; Munz 1974).

Major wildlife species found in this environment prehistorically were coyote (*Canis latrans*); mule deer (*Odocoileus hemionus*); grizzly bear (*Ursus arctos*); mountain lion (*Felis concolor*); rabbit (*Sylvilagus audubonii*); jackrabbit (*Lepus californicus*); various rodents, the most notable of which are the valley pocket gopher (*Thomomys bottae*), California ground squirrel (*Otospermophilus beecheyi*), and dusky footed woodrat (*Neotoma fuscipes*); and reptiles such as western pond turtle (*Actinemys marmorata*), southern Pacific diamondback rattlesnake (*Crotalus oreganus helleri*), gopher snake (*Pituophis melanoleucus catenifer*), and several lizard species (Burt and Grossenheider 1976; Head 1972; Stebbins 1966).

These plant communities, as well as the native plant resources supported by these habitats, would have been used by Native American populations for clothing, food, medicine, tools, decorative uses, and ceremonial purposes (Bean and Saubel 1972; Bean and Shipek 1978; Cuero 1968; Hedges and Beresford 1986; Luomala 1978; Sparkman 1908). Many of the animal species living within these vegetation communities (such as rabbits, deer, small mammals, and pond turtles, as well as birds and fish) would have been utilized by native inhabitants as well. Cottontail rabbits, jackrabbits, and rodents were very important to the prehistoric diet, and while deer were somewhat less significant for food, they were an important source of leather, bone, and antler for clothing and tools (Bean and Shipek 1978; Christenson 1990; Luomala 1978).

2.2 CULTURAL SETTING

2.2.1 Archaeological Context

2.2.1.1 Prehistoric Period

The following cultural history outlines and briefly describes the known prehistoric cultural traditions in the vicinity of the project area. The approximately 10,000 years of documented prehistory of the San Diego region has often been divided into three periods: Early Prehistoric Period (San Dieguito tradition/complex), Archaic Period (Milling Stone Horizon, Encinitas tradition, La Jolla and Pauma complexes), and Late Prehistoric Period (Cuyamaca and San Luis Rey complexes).

2.2.1.2 Early Prehistoric Period Traditions/Complexes

The time period of the first known inhabitants of California, the Paleo-Indian or Big-Game-Hunting peoples of the last Ice Age, Wallace (1955) labeled as the Early Man Horizon. The Early Prehistoric Period encompasses the Early Man Horizon within the Terminal Pleistocene (between 15,000 and 11,000 years ago) and the Early Holocene, beginning approximately 10,000 years ago (Erlandson et al. 2007:62). In the western United States, most evidence for the Paleo-Indian or Big-Game-Hunting peoples during this time period derives from finds of large, fluted spears and projectile points (Fluted-Point Tradition) in places such as Clovis and Folsom in the Great Basin and the Desert Southwest (Moratto 1984:79–88), with several, mostly isolated, occurrences of fluted spear points encountered on or near the coast of California (Dillon 2002; Rondeau et al. 2007). Three of these isolated fluted points or point fragments have occurred in San Diego County, all in the mountainous or eastern areas, one northeast of Warner Springs (Kline and Kline 2007), one in Cuyamaca Pass (Dillon 2002; Rondeau et al. 2007), and one near Ocotillo Wells (Rondeau et al. 2007). Several others have occurred in proximity to the county, including one along the coast in adjacent southern Orange County to the northwest (Fitzgerald and Rondeau 2012) and two in Baja California to the south (Des Lauriers 2008; Hyland and Gutierrez 1995).

While isolated fluted point or point fragments have been found in the eastern mountainous area of San Diego County, the earliest reliably dated human habitation in the San Diego area during the Early Prehistoric Period is the San Dieguito Tradition/complex. The San Dieguito Tradition, with an artifact assemblage distinct from that of the Fluted Point Tradition, but which both Wallace (1955) and Warren (1968) defined for this period, has been documented mostly in the coastal or near the coastal area of San Diego County as well as in the southeastern California deserts (Carrico et al. 1993; Rogers 1939, 1966; True and Bouey 1990; Warren 1966, 1967; Warren and True 1961), with only sparse evidence for it discovered in the coastal area north of San Diego County (e.g., Sutton and Grenda 2012). The San Dieguito Tradition is characterized by an artifact inventory consisting almost entirely of flaked stone biface and scraping tools but lacking the fluted points associated with the Fluted-Point Tradition. The subsistence system or emphasis of this tradition, while not yet entirely agreed upon, is suggested by Warren, based on an artifact assemblage of primarily hunting associated tools, as having an orientation towards a hunting, rather than a gathering, economy in contrast to the more gathering-oriented complexes that were to follow in the Archaic Period (Warren 1967, 1968, 1987; Warren et al. 2008).

Other researchers have interpreted the San Dieguito subsistence system to be possibly ancestral to, or as a developmental stage for, the subsequent predominantly gathering-oriented “La Jolla/Pauma complex” (e.g., Bull 1983; Ezell 1987; Gallegos 1985, 1987, 1991; Koerper et al. 1991). Based on uncalibrated radiocarbon dates, Warren originally indicated this tradition to have begun sometime before 9,000 years ago and to have ended sometime between 8,500 and 7,500 years ago (1967; 1968:4).

The C.W. Harris Site (CA-SDI-149) is located along the San Dieguito River, approximately six miles southwest of the project area. The content of the earliest component of this site formed the basis upon which Warren and others (Rogers 1966; Warren 1966, 1967; Warren and True 1961) identified the “San Dieguito complex,” and, subsequently, Warren defined it as the San Dieguito Tradition (1968).

Diagnostic artifact types and categories associated with the San Dieguito Tradition include elongated bifacial knives; large leaf-shaped projectile points; scraping tools; crescentics; and in the desert, Silver Lake and Lake Mojave projectile points (Knell and Becker 2017; Rogers 1939; Vaughan 1982; Warren 1966, 1967). Recent calibrations of previously uncalibrated radiocarbon dates for the San Dieguito complex from the Harris Site that ranged from sometime before 9030 ± 350 years before present (BP) to

between 8490 ± 400 and 7620 ± 380 BP (Warren 1967, 1968) indicate that the oldest of these dates are now actually between 10,000 and 11,000 BP (Warren and Ore 2011; Warren et al. 2008). While most of the evidence for the San Dieguito Tradition has derived from sites like the Harris Site in the coastal region of San Diego County, artifacts attributed to the complex have also recently been found in the Cuyamaca Mountains area of the County, approximately 40 miles southeast of the project area (Pigniolo 2005).

2.2.1.3 Archaic Period Traditions/Complexes

The Archaic Period, in the southern coastal region, dates from circa 8600 BP to circa 1,300 years ago (Warren et al. 2008). A large number of archaeological site assemblages dating to this period have been identified at a range of coastal and inland sites. This appears to indicate that a relatively stable, sedentary hunting and gathering complex, possibly associated with one people, was present in the coastal and immediately inland areas of what is now San Diego County for more than 7,000 years. These assemblages, designated as the La Jolla/Pauma complexes, are considered part of Warren's (1968) "Encinitas Tradition" and Wallace's (1955) "Milling Stone Horizon." In general, the content of these site assemblages includes manos and metates; shell middens; terrestrial and marine mammal remains; burials; rock features; bone tools; doughnut stones; discoidal; stone balls; plummets; biface points/knives; beads made of stone, bone, or shell; and cobble-based tools at coastal sites and increased hunting equipment and quarry-based tools at inland sites. As defined by True (1958), the "Pauma complex" aspect of this culture is associated with sites located in inland areas that lack shellfish remains but are otherwise similar in content to the La Jolla complex. The Pauma complex may, therefore, simply represent a non-coastal expression of the La Jolla complex (True 1980; True and Beemer 1982).

During the latter half of the Archaic Period, beginning approximately 5500 BP, a major shift in the subsistence system of prehistoric populations in the southern coastal region appears to have occurred. Artifacts such as dart points, mortars, and pestles, which are essentially absent during the Early Archaic Period, become increasingly present in site assemblages dating after circa 5500 BP. This evidence in the archaeological record is indicative of an increase in hunting activity and the gathering and processing of acorns for subsistence. Also noted by Warren (2012), was an increase in the presence of larger mammal remains in La Jolla complex faunal assemblages during the latter part of the Archaic Period. This new and subsequently increasing use of these resources represents a significant shift in the Encinitas/La Jolla/Pauma complex subsistence system in the southern coastal region (Warren et al. 2008; Warren 2012).

Although early researchers attributed a number of inland sites in the project area vicinity to the Early Milling Stone Horizon and/or the La Jolla/Pauma complex (e.g., True 1980; Warren et al. 1961:10), similar to the San Dieguito complex, most of the substantiating archaeological evidence for the Encinitas tradition/La Jolla/Pauma complex (Milling Stone Horizon) in present-day San Diego County is derived from sites in near coastal valleys, estuaries, and/or embayments that are present along the San Diego coast south of the San Luis Rey River (e.g., Cooley and Mitchell 1996; Cooley et al. 2000; Gallegos 1995:200; Pigniolo et al. 1991; Shumway et al. 1961; Smith and Moriarty 1985). In the upper-elevation foothill and inland mountain areas of San Diego County, evidence for sites associated with the Archaic Encinitas Tradition/La Jolla/Pauma complex is less common relative to the Late Prehistoric complexes that succeed them (e.g., Chace and Sutton 1990; Cooley and Barrie 2004; Raven-Jennings and Smith 1999; True 1970). McDonald (1995:14) observed that "most sites in the Laguna Mountains can be expected to date from late prehistoric or ethnohistoric occupation of the region, and Archaic Period remains, while not unknown, are relatively rare." The location of the project area, nine miles from the

coast, places it within the inland foothill area where sites that can be definitely dated to the Archaic Period, and that contain La Jolla or Pauma complex assemblages, are less common (Warren et al. 2008).

Between the project area and the coast, sites dating to the Archaic Period are more numerous. To the west of the project area, for example, along the coast around Batiquitos Lagoon, more than 20 sites have been documented spanning the early to middle Archaic Period from circa 8200 to 3500 BP (Gallegos 1991; Masters and Gallegos 1997). Investigations of a shell midden deposit at site CA-SDI-10238, at the mouth of the San Dieguito River, indicate the occupation of the site, spanning the Middle to Early Archaic Period, based on radiocarbon dates from 5790 ± 110 to 7690 ± 60 BP (Cooley et al. 2000). A large number of radiocarbon dates from the Del Mar Site (CA-SDI-10940), also located near the mouth of the San Dieguito River, similarly span this period (Cooley 2008). The Harris Site (CA-SDI-149) and others in proximity to it along the San Dieguito River 6.5 miles southwest of the project area contain, in addition to the Early Prehistoric San Dieguito component mentioned above, stratigraphic components with La Jolla complex assemblages dating to the Archaic Period (Carrico et al. 1993; Cooley 2006; Warren and True 1961; Warren et al. 2008). As the distance from the coast increases, however, fewer sites dating to, or with definitive assemblages characteristic of, the Archaic Period have been documented. While not plentiful, some sites in foothill circumstances have been documented, such as site CA-SDI-4608 located near Poway, approximately 11 miles to the southeast of the project area and 15.3 miles from the ocean. This site has produced both radiocarbon dating and an assemblage that places at least a portion of it within the Archaic Period, circa 5000 BP (Raven-Jennings and Smith 1999).

2.2.1.4 Late Prehistoric Period Complexes

The beginning of the Late Prehistoric Period is marked by evidence of a number of new tool technologies and subsistence shifts in the archaeological record. Compared to those shifts noted for the middle and late Archaic Period, those occurring at the onset of the Late Prehistoric Period were rather abrupt changes. The magnitude of these changes and the short period of time within which they took place seem to indicate a significant alteration in subsistence practices in what is now San Diego County circa 1500 to 1300 BP. The changes observed include a technological shift from the use of atlatl and dart to the bow and arrow; subsistence shifts that include a reduction in shellfish gathering in some areas (possibly due to silting of the coastal lagoons); and the storage of crops, such as acorns, by Yuman- and Takic-speaking peoples. New traits, such as the production of pottery and the cremation of the dead, were also introduced during the Late Prehistoric Period.

Movements of people during the last 2,000 years can account for at least some of these changes. Yuman-speaking people had occupied the Gila/Colorado River drainages of what is now western Arizona by 2,000 years ago (Moriarty 1968) and then continued to migrate westward. An analysis by Moriarty (1966, 1967) of materials recovered from the Spindrifft site in La Jolla indicated a preceramic Yuman phase. Based on this analysis and a limited number of radiocarbon samples, Moriarty concluded that Yumans, lacking ceramic technology, penetrated into and occupied what is now the San Diego coastline circa 2,000 years ago. Subsequently, approximately 1,200 to 1,300 years ago, ceramic technology diffused into the coastal area from the eastern deserts. Although these Yuman speakers may have shared cultural traits with the people occupying what is now eastern San Diego County before 2000 BP, their influence is better documented throughout present-day San Diego County after 1300 BP with the introduction of small projectile points, ceramics, Obsidian Butte obsidian, and the practice of cremation of the dead.

Based on early research by Meighan (1954) and True (1970), two distinct archaeological complexes have been proposed for the Late Prehistoric Period in what is now San Diego County. The Cuyamaca complex is based on an analysis by True of archaeological excavations within Cuyamaca Rancho State Park and of the San Diego Museum of Man collections. Based on the results of this analysis, True (1970) was able to define a Late Prehistoric Period complex for southern San Diego County that was distinct from Meighan's (1954) San Luis Rey complex in the northern county area. The presence, absence, or differences in the relative occurrence of certain diagnostic artifacts in site assemblages provide the principal distinctions between these archaeological complexes. Cuyamaca complex sites, for example, generally contain both Cottonwood Triangular-style points and Desert Side-notched arrow points, while Desert Side-notched points are quite rare or absent in San Luis Rey complex sites (Pignoli 2004). Other examples include Obsidian Butte obsidian, which is far more common in Cuyamaca complex sites than in San Luis Rey complex sites, and ceramics that, while present during the Late Prehistoric Period throughout what is now San Diego County, are more common in the southern or Cuyamaca complex portions of San Diego County where they occur earlier in time and appear to be somewhat more specialized in form. Both complexes have produced a variety of vessel types, along with rattles, straight and bow-shaped pipes, and effigies. Interment of the dead at Cuyamaca complex sites is almost exclusively by cremation, often in special burial urns for interment, while archaeological evidence from San Luis Rey complex sites indicates both inhumation and cremation. A Cuyamaca complex artifact assemblage commonly contains Tizon Brown Ware pottery, various cobble-based tools (e.g., scrapers, choppers, and hammerstones), arrow shaft straighteners, pendants, manos and metates, and mortars and pestles. The arrow point assemblage often includes Desert Side-notched and Cottonwood Triangular points, with the Dos Cabezas Serrated type also sometimes occurring (McDonald and Eighmey 2008).

Based on ethnographic data, including the areas defined for the Hokan-based Yuman-speaking peoples (Diegueño/Kumeyaay) and the Takic-speaking peoples (Luiseño) at the time of contact, it is generally accepted that the Cuyamaca complex is associated with the Yuman Diegueño/ Kumeyaay and the San Luis Rey complex with the Luiseño/Juaneño (Robbins-Wade 1986; True 1970; True and Waugh 1982).

In contrast to Archaic Period sites, Late Prehistoric Period sites attributable to the San Luis Rey or Cuyamaca complexes are less common in the near-coastal areas of the county. Gallegos (1995:200) states that "for San Diego County, there is temporal patterning, as the earliest sites are situated in coastal valleys and around coastal lagoons. Late Prehistoric Period sites are also found in coastal settings but are more common along river valleys and interior locations." The project area lies in an area that is marginal between the two complexes. It is also possible, now, to observe, however, that while a number of examples of Late Prehistoric Period sites that appear to be attributable exclusively to the San Luis Rey or Cuyamaca complexes have been identified for the near-coastal inland foothill areas of the county through diagnostic artifacts and/or radiocarbon dating (e.g., Chace and Hightower 1979:48; McCown 1955), a number of sites containing evidence for both Late Prehistoric Period and Archaic Period occupations have also been documented (Carrico and Cooley 2005; Carrico et al. 1994; Cooley and Barrie 2004; Gross and Robbins-Wade 1992, 2010; McDonald et al. 1994; Raven-Jennings and Smith 1999; Willey and Dolan 2004). It appears possible, therefore, that as more archaeological data accumulates, this geographic dichotomy of site locations between the Archaic and Late Prehistoric periods within the county may be found to not be completely valid.

2.2.1.5 Native American Perspective

In addition to the point of view discussed in the culture history above, it is recognized that other perspectives exist to explain the presence of Native Americans in the region. The Native American

perspective is that they have been here from the beginning, as described by their creation stories. Similarly, they do not necessarily agree with the distinction that is made between different archaeological cultures or periods, such as “La Jolla” and “San Dieguito.” They instead believe that there is a continuum of ancestry from the first people to the present Native American populations of San Diego (County of San Diego 2011).

2.2.2 Historical Context

2.2.2.1 Spanish Period

During the mid-eighteenth century, Spain escalated its involvement in California from exploration to colonization. In 1769, a Spanish expedition headed by Gaspar de Portolá and Junípero Serra traveled north from San Diego, seeking suitable locations to establish military presidios and religious missions to extend the Spanish Empire into Alta California. The Presidio of San Diego and Mission San Diego de Alcalá were established in 1769, followed by the Presidio of Monterey and Mission San Carlos Borromeo de Carmelo in 1770 in northern California. The missions and presidios stood, literally and figuratively, as symbols of Spanish colonialism, importing new systems of labor, demographics, settlement, and economies to the area. Agriculture and animal husbandry were the main pursuits of the missions.

Missions San Juan Capistrano and San Luis Rey de Francia, established in 1776 and 1798, respectively, claimed a large part of northern San Diego and southwestern Riverside counties. On the coast, the Luiseño and the Kumeyaay people were moved into the mission environment, where living conditions and diseases promoted the decline of the native populations (Bean and Shipek 1978). However, throughout the Spanish Period, the influence of the Spanish progressively spread further from the coast and into the inland areas of southern California as the missions extended their influence into the surrounding regions and used the lands for grazing cattle and other animals. In the 1810s, ranchos and mission outposts, called *asistencias*, were established relatively near the project area, increasing the amount of Spanish contact in the inland region. An *asistencia* was established in Pala in 1816 and Santa Ysabel in 1818.

2.2.2.2 Mexican Period

Mexico, including Alta California, gained its independence from Spain in 1821, but Spanish culture and influence remained, as the missions continued to operate as they had in the past, and laws governing the distribution of land were also retained for a time. Following the secularization of the missions in 1834, large ranchos were granted to prominent and well-connected individuals, ushering in the Rancho Era, with the society transitioning from one dominated by the church and the military to a more civilian population, with people living on ranchos or in pueblos. With the numerous new ranchos in private hands, cattle ranching expanded and prevailed over agricultural activities.

The project area is situated within the boundary of Rancho Vallecitos de San Marcos, which was granted to Jose Maria Alvarado in 1840 by Governor Juan B. Alvarado (Hoffman 1862). The 8,975-acre grant was situated between Rancho Rincon del Diablo on the east and Rancho Buena Vista on the west, and encompassed what is now San Marcos. Farming and ranching were the staple activities occurring within the Rancho during the Mexican Period. Jose Alvarado was killed during the Pauma Massacre in 1846, and the land was left to his wife, who sold the land to Lorenzo Soto.

These ranches put new pressures on California’s native populations, forcing them to acculturate or relocate farther into the backcountry. In rare instances, former mission neophytes were able to organize

pueblos and attempt to live within the new confines of Mexican governance and culture. The most successful of these was the Pueblo of San Pasqual, located inland along the San Dieguito River Valley, founded by Kumeyaay, who were no longer able to live at the Mission San Diego de Alcalá (Carrico 2018; Farris 1994).

2.2.2.3 American Period

American governance began in 1848, when Mexico signed the Treaty of Guadalupe Hidalgo, ceding California to the United States at the conclusion of the Mexican-American War. A great influx of settlers to California and the San Diego region occurred during the American Period, resulting from several factors, including the discovery of gold in the state in 1848, the end of the Civil War, the availability of free land through the passage of the Homestead Act, and later, the importance of San Diego County as an agricultural area supported by roads, irrigation systems, and connecting railways. The increase in American and European populations quickly overwhelmed many of the Spanish and Mexican cultural traditions, and greatly increased the rate of population decline among Native American communities.

While the American system required that the newly acquired land be surveyed before settlement, the Treaty of Guadalupe Hidalgo bound the United States to honor the land claims of Mexican citizens who were granted ownership of ranchos by the Mexican government. The Land Act of 1851 established a board of commissioners to review land grant claims, and land patents for the land grants were issued from 1876 to 1893.

A claim for Rancho Vallecitos de San Marcos was filed with the Land Commission in 1852 and was granted to Lorenzo Soto in 1883 (Willey 1886). Rancho Buena Vista was patented to Jesus Machado in 1853; Machado's son, Luis G. Machado, would later inherit the rancho after his father was killed (Willey 1886). In 1860, Lorenzo Soto acquired Rancho Buena Vista from foreclosure; after his death four years later in 1863, his widow Maria Ygnacia Moreno de Soto married Tomas Alvarado, who would sell the rancho to Cave Johnson Coutts in 1866 (Brackett 1939).

2.2.2.4 The City of San Marcos

The first permanent settlement in what was to become the city of San Marcos was a 160-acre homestead established by Gustavus French Merriam, situated within the Twin Oaks Valley area, where he began wine and honey production (Carroll 1975). Soon after the establishment of the Merriam homestead, in the early 1880s, German and Dutch immigrants arrived to establish their own homesteads. In 1883, John H. Barham established the first town, Barham Township, which was located a few miles south of the Merriam homestead and was comprised of a post office, a blacksmith, a feedstore, a school, and even a newspaper. By 1887, almost the entirety of the San Marcos lands was purchased from Coutts by the San Marcos Land Company, who divided the land into community tracts and established the town of San Marcos (Carroll 1975). By 1889, the town had two schools: the original school in Barham, which was moved that year, and the Richland School, which was built that same year. While the arrival of the Santa Fe Railroad brought more people to the town, it also forced the movement of the original town center to its current location in 1901 (Moyer 1969).

San Marcos was primarily a rural agricultural town into the mid-1900s, but soon dairy and poultry became major economic enterprises of the town. In 1946, San Marcos was chosen to be the location of Palomar College, and while classes were originally located in Vista, the Quonset huts were moved to the San Marcos location in 1950, with permanent construction beginning in 1956 (Carroll 1975). Both the

increase in dairy operations and the presence of the college increased the population, which was further freed from the constraint of low water resources with the arrival of water from the Colorado River in 1956. The city became incorporated on January 28, 1963, and grew from its population of 3,200 to 17,479 by 1980 as the third fastest-growing city in California at the time.

2.2.2.5 History of the Project Area

The project area itself was undeveloped, with roads to the north and south running along what is now SR-78 and San Marcos Boulevard, until the 1940s. At this point, the McCormick Airfield is located at its southern and southwestern portions, with the San Marcos Valley Airport directly to the north. The McCormick airfield was established by George Almand in 1945 and was home to the Almand Air Academy. It consisted of several planes, a 50-foot-by-90-foot hangar with an attached 40-foot-by-40-foot Quonset hut, and a single unpaved runway. The San Marcos Valley Airport was established in 1946, and was comprised of two unpaved runways, with several hangars to the east of the runway, but was closed by 1965. By 1978, the project area was being developed into a mixed-use commercial and industrial center, which it continues to be today.

Directly south of the project area was the Prohoroff Poultry Farm, which was considered one of the largest poultry farms in the world at some points. The farm began as a small farm established by Russian immigrants Terenty and Mary Prohoroff in 1924; their son John Prohoroff began a small poultry farm in 1945 with 250 chickens. At its peak, it covered 557 acres and housed over two million hens, producing over seven million eggs annually (Rossi 2007). The Prohoroff family's impact did not stop there, however, as they were members of the Molokan Christian church. In the late 1950s, they sponsored a group of Molokan families from Mexico, and built houses at Shubin Lane, Bolotin Lane, and Terrier Avenue, along with a Molokan Church at the end of Shubin Lane in 1958. By 1985, the Prohoroffs sold the land to developers, a portion of which is now part of the California State University San Marcos campus.

2.2.3 Ethnohistoric Context

The project area is located in a marginal area between the traditional territories of the Yuman-speaking Kumeyaay (Diegueño) and the Takic-speaking Luiseño populations, who inhabited the area at the time of European contact. The Kumeyaay were originally labeled Diegueño by the Spaniards, a term derived from their association with Mission San Diego de Alcalá; likewise, the Luiseño/Juaneño were given names for the Missions San Luis Rey and San Juan Capistrano. The term Diegueño was adopted by early anthropologists (e.g., Kroeber 1925) and further divided into the southern and northern Diegueño. The following is from Carrico (2008:217):

The linguistic and language boundaries as seen by Shipek [1987] subsume the Yuman speakers into a single nomenclature, the Kumeyaay, a name applied previously to the mountain Tipai or Southern Diegueño by Lee (1937), while Almstedt (1974:1) noted that 'Ipai applied to the Northern Diegueño, with Tipai and Kumeyaay for the Southern Diegueño. However, Luomala (1978:592) has suggested that while these groups consisted of over 30 patrilineal clans, no singular tribal name was used, and she referred to the Yuman-speaking people as 'Ipai/Tipai...

Other researchers have designated the Kumeyaay people living north of the San Diego River as 'Ipai (Northern Diegueño), and those south of the river and into Baja California as Tipai (Southern Diegueño) (Hedges 1975:71–83; Langdon 1975:64–70).

The southern boundary between the territories of the Luiseño and the Northern Diegueño (Ipai Kumeyaay) was delineated by Bean and Shipek (1978) as extending from the coast east along Agua Hedionda Creek as far as the northern tip of the valley of San José and Palomar Mountain, which would place the project area within the territory of the Kumeyaay. The boundaries delineated by Sparkman (1908), Kroeber (1925), and White (1963), however, would appear to place the project area in Luiseño territory.

The Luiseño territory was subdivided and occupied by different families or bands. Family groups were known as *tunglam* or *kamalum*. Chiefs acted as religious leaders of clans and directed religious ceremonies. This position was hereditary (Sparkman 1908). Kroeber estimates that the Luiseño population was approximately 3,000 to 4,000 (Kroeber 1925) during the Mission era. More than 80 family groups were known in the early twentieth century (Kroeber 1925). The Luiseño lived in semi-sedentary villages usually located along major drainages, in valley bottoms, and on the coastal strand, with each family controlling gathering areas (Bean and Shipek 1978; Sparkman 1908; White 1963). True (1980) indicated that the predominant determining factor for the placement of villages and campsites was locations where water was readily and consistently available. The Luiseño followed a seasonal gathering cycle, with bands occupying a series of habitation sites within their territory (Bean and Shipek 1978; White 1963). One band could have multiple areas depending on the season, such as in the mountains or valley areas (Sparkman 1908). Each band was typically restricted to their territory for hunting and resource gathering. The Luiseño subsisted on seeds, acorns, fruits, and berries, as well as meat caught by hunting and fishing (Kroeber 1925; Sparkman 1908). The resources used depended on the seasons, as the Luiseño moved through the coastal, mountain, or desert zones (Lightfoot and Parrish 2009). While most of the major Luiseño villages known ethnohistorically were located closer to the coast along the Santa Margarita River Valley and the San Luis Rey River Valley (Bean and Shipek 1978; Kroeber 1925; White 1963), Kroeber (1925) does indicate general locations for ethnohistoric Luiseño villages in more inland areas as well.

The population of the Kumeyaay people in San Diego in 1770 was estimated by Kroeber (1925:883) to be 3,000, but Luomala (1978:596) believes it was likely double or triple that estimate, and Carrico (2008:12) indicates that it was around 20,000. The Kumeyaay were territorial, with bands that lived in semi-sedentary, politically autonomous villages or rancherías (Carrico 2008). Each village was comprised of many households, and groups of villages were part of a larger social kinship system. The basic unit of the system “appears to have been kin groups referred to by a variety of names including sib, shimulls, cimuls, gens, and gentes. These clans were organized into exogamous groups based on patrilineal (male) descent” (Carrico 2008:9). Most rancherías were the seat of a clan, although it is thought that, aboriginally, some clans had more than one ranchería, and some rancherías contained more than one clan, often depending on the season within the year (Luomala 1978). Villages and larger campsites were generally chosen based on proximity to water, boulder outcrops, environmental protection, and availability of plants and animals (Luomala 1978; True 1980). Consequently, many of the Kumeyaay villages or rancherías were located in river valleys and along the shoreline of coastal estuaries (Carrico 2008; Kroeber 1925; Luomala 1978). They subsisted on a hunting and foraging economy, exploiting San Diego’s diverse ecology throughout the year; coastal bands exploited marine resources, while inland bands might move from the desert, ripe with agave and small game, to the acorn and pine nut rich mountains in the fall (Cline 1984; Kroeber 1925; Luomala 1978).

While no ethnographically documented villages are known to have been located in immediate proximity to the project area, Kroeber (1925: Plate 57) indicates that a village, *Shikapa*, may have been located to the west along San Marcos Creek, and an additional two villages, *Mehel-om-pom-pauvo* and *Panakare*,

may have been located to the northeast in the area of uppermost Escondido Creek. Kroeber indicates that these villages were all Luiseño. Kroeber (1925: Plate 57) and Trafzer and Carrico (1992:53) also indicate that three other villages, *Sinyau-Pichkara*, *Ahmukatlkatl*, and *Hapai*, were located along the San Dieguito River to the south of the project area and that these were Diegueño (Kumeyaay [Ipai]) villages. While the exact locations for most of these villages are uncertain, two, *Sinyau-Pichkara* (San Bernardo) and *Ahmukatlkatl* (San Pascual), are known historically (Carrico 2008:220; Trafzer and Carrico 1992:52–53). According to ethnologists, the closest of these, *Sinyau-Pichkara*, would have been located approximately nine miles south of the project area along the San Dieguito River. While these latter two villages were historically associated with the Kumeyaay, Trafzer and Carrico (1992:52–53) note that “the Kumeyaay and Luiseño both revere a site [possibly *Sinyau-Pichkara*] near present-day Rancho Bernardo,” indicating that the boundary between these two peoples has likely varied over time.

3.0 METHODS

HELIX conducted a records search of the project site and a one-mile radius at the South Coastal Information Center (SCIC) at San Diego State University on September 25, 2023. The records search covered a one-mile radius around the project area and included the identification of previously recorded cultural resources and locations and citations for previous cultural resources studies. A review of the California Historical Resources and the state Office of Historic Preservation (OHP) historic properties directories and Local Register was also conducted. The records search maps are included as Confidential Appendix A to this report. Historic maps and aerial photographs were reviewed to assess the potential for historic archaeological resources to be present.

Various additional archival sources were also consulted, including historic topographic maps and aerial imagery. These include historic aerials from 1938, 1947, 1953, 1964, 1967, and 1978 (NETR Online 2023) and several historic USGS topographic maps, including the 1893 and 1901 Escondido (1:62,500), 1901 San Luis Rey (1:125,000), and the 1948, 1968, and 1983 San Marcos (1:24,000) topographic maps. The purpose of this research was to identify historic structures and land use in the area, as well as changes to the area over time.

The Native American Heritage Commission (NAHC) was contacted on September 07, 2023, for a Sacred Lands File search and list of Native American contacts, which were received on October 17, 2023. Letters were sent on October 18, 2023 to the contacts listed by the NAHC, in part to determine which tribes wanted to participate in the field survey. Tribes that expressed interest in conducting the survey were included during fieldwork. Native American correspondence is included as Confidential Appendix B to this report.

HELIX archaeologist Mary Villalobos and Native American monitors Santee Marruffo of the Pechanga Band of Indians (Pechanga) and Shanee Ventura of Saving Sacred Sites (San Luis Rey Band of Mission Indians [San Luis Rey]) conducted a site visit to the project site on December 1, 2023. Because the property is developed with the existing Costco warehouse, the natural ground surface was obscured by pavement and buildings. There are open planters lining the building and scattered throughout the property (Appendix D, Plates). Where soil was visible on the property, it was checked for cultural material.

4.0 FINDINGS

4.1 PREVIOUS SURVEYS

The records search results identified 81 previous cultural resource studies within a one-mile radius of the project limits (Table 1, *Previous Studies within One Mile of the Project Area*). Thirty-five of the studies were surveys or inventories; six were testing or site evaluation projects; three were Environmental Impact Reports or Initial Studies; five were architectural studies including Historic Resources Evaluation Reports (HRERs) or Historic American Building Surveys (HABS); 16 were monitoring reports; one was a treatment plan; two were due diligence studies; and the remainder were not specified. Most of the surveys identified sites or artifacts within the search radius, as did a number of the monitoring projects. Of these, five were conducted within the project site itself. One is titled only as an archaeological report (Gallegos 1983), one is a draft Environmental Impact Report (Micheal Brandman Associates, Inc. 1989), one is a Historic Properties Survey Report (Rosen 2003), one is an archaeological survey (Huey 1982), and one is a records search and literature review (Robbins-Wade 2003).

Table 1
PREVIOUS STUDIES WITHIN ONE MILE OF THE PROJECT AREA

Report Number (SD-)	Year	Author	Report Title
00224	1977	Carrico, R.	Archaeological Survey of the San Marcos General College Community Plan Area San Marcos, California.
00302	1989	Bissell, R.	Cultural Resources Reconnaissance of the Discovery San Marcos Parcel, 260 Acres in San Marcos, San Diego County, California.
00306	1989	Bissell, R.	Cultural Resources Reconnaissance of the U.S. Homes Rancho Vera Cruz Parcel, 102 Acres in San Marcos, San Diego County, California.
00364	1988	Bissell, R.	Cultural Resources Reconnaissance of a Small Section of a Tributary of San Marcos Creek, San Marcos, San Diego County, California.
00372	1986	Bissell, R.	Archaeological Reconnaissance of the San Marcos Creek Flood Channel Project, San Marcos, San Diego County, California.
00684	1985	Hector, S., and S. Van Wormer	Archaeology Survey of the Prohoroff Property San Marcos, California.
00710	1989	Cheever, D.	Cultural Resource Significance Testing at SDi-8813 The Palomar Heights Project City of San Marcos, California
00712	1975	Kaldenberg, R.	An Archaeological Resource Impact Report for Lakeshore Farms Unit One and Hillsdale Farms
*01031	1983	Gallegos, D.	<i>Archaeological Report for Business/Industrial, Richmar, Lake San Marcos and Barham/Discovery Community Plan, San Marcos, California</i>
01343	1981	Polan, K.	An Archaeological Reconnaissance of the San Marcos County Water District Alternate Sewer Alignment San Marcos, California.

Report Number (SD-)	Year	Author	Report Title
02037	1990	Micheal Brandman Associates	Screencheck Draft Environmental Impact Report Ranch Vera Cruz Specific Plan SCH #89040524
*02043	1989	Micheal Brandman Associates	<i>Draft Environmental Impact Report San Marcos Flood Control Channel San Marcos Creek/Las Posas Reach SCH #88061505</i>
02123	1989	City of San Marcos	Initial Environment Assessment Bryon White Property Specific Plan, San Marcos
*02322	1992	Huey, D.	<i>Historical-Archaeological Survey Report for Four Land Parcels Near Highway 78, San Marcos, CA</i>
02368	1992	Wade, S.	Cultural Resource Reconnaissance for University Center Business Park, City of San Marcos
02373	1992	Gallegos, D.	Historical/Archaeological Survey for the Proposed Kaiser Permanente Medical Center
02607	1992	Bissell, R.	Test Excavation of Archaeological Site SDM-W-2970
02622	1991	Bissell, R.	Cultural Resource Reconnaissance in Support of Proposed Flood Control Improvements to San Marcos Creek within the City of San Diego
02916	1990	Peak & Associates, Inc.	Cultural Resources Assessment of AT&T's Proposed San Bernardino to San Diego Fiber Optic Cable, San Bernardino, Riverside and San Diego Counties, California
02948	1994	Strudwick, I., D. Gallegos, and R. Phillips	Historical/Archaeological Test Report for Sites CA-SDI-12510/H, CA-SDI-12592/H and CA-SDI-12596-H, San Marcos, California
04117	1990	Gallegos, D.	The Copley Project, San Marcos, California Cultural Resources Survey and Testing Program at SDI-5633
04526	1992	Casen, G., and D. Saunders	State Route 78 Interchange Improvements at Las Posas Road and San Marcos Boulevard
04652	2001	Gallegos And Associates	Cultural Resource Test Report for Oceanside - Escondido Rail Project Oceanside, California
04744	1986	Bissell, R.	Archaeological Reconnaissance of the San Marcos Creek Flood Channel Projects, San Marcos, San Diego County, California
05918	1996	City Of San Diego	Proposed Mitigated Negative Declaration for Sewer Group Job. No. 610
06174	2000	Gallegos, D., L. Tift, and S. Ni Ghabhlain	Cultural Resource Survey Report for a Portion of the San Marcos Creek Flood Channel San Marcos, California
06178	2000	Ni Ghabhlain, S.	Cultural Resources Survey Report for the Brandes Property
07114	1976	McCorkle Apple, R.	San Marcos Survey Introduction to Archaeological Surveying
07664	1980	Berryman, J., and J. Gage Reading	Archaeological Reconnaissance and Subsurface Testing of The Discovery San Marcos Project, San Marcos, CA
07729	2000	Foster, D., and M. Thornton	Management Plan for CDF's Historic Buildings and Archaeological Sites
07790	2000	Smith, B., and K. Hunt	Cultural Resource Survey for the San Marcos 9-Acre Project
07986	2000	Duke, C.	Cultural Resource Assessment for Pacific Bell Wireless Facility SD 444-02 County of San Diego, CA

Report Number (SD-)	Year	Author	Report Title
08105	2002	Duke, C.	Cultural Resource Assessment Cingular Wireless Facility No. SD 656-04, San Diego County, CA
08308	2003	Guerrero, K., and B.F. Smith	Cultural Resources Survey and Evaluation Program for the Forecast Homes Project
*08455	2003	Rosen, M.	<i>Historic Property Survey Report-Negative Findings Second Supplemental</i>
08839	2003	Laylander, D.	Third Supplemental Historic Property Survey Report, Negative Findings, Biological Mitigation Parcel for the SR 78 and Las Posas Interchange Project
09059	2002	Kyle, C.	Cultural Resource Assessment for Cingular Wireless Facility SD-656-03 City of San Marcos San Diego County, California
09243	2004	Pierson, L.	Archaeological Monitoring and Resource Evaluation Program for the Forecast Project
09310	2002	Pigniolo, A.	Cultural Resource Inventory for Cingular Galleria Vera Cruz Site (SD-656-02), City of San Marcos, California
09546	2001	Guerrero, M., D. Gallegos, T. Stropes, S. Bouscaren, S. Bugbee, and R. Cerreto	Cultural Resource Test Report for Oceanside-Escondido Rail Project Oceanside, California
09551	2002	Gallegos, D.	Data Recovery Program for PacBell Site CA-SDI-5633 San Marcos, California
09555	2002	Guerrero, M.	Cultural Resource Survey for the Creekside Marketplace and Adjacent Retail Project San Marcos, California
09582	2003	Guerrero, M., and D. Gallegos	Cultural Resource Survey for the Palomar Station Project
10164	2005	de Barros, P., and Palomar College Students	Data Recovery Excavations at CA-SDI-5581 Palomar Community College Campus, San Marcos, San Diego County, California
10551	2006	Arrington, C.	Cultural Resources Final Report of Monitoring and Findings for the Qwest Network Construction Project, State of California
11154	2007	Laylander, D.	An Archaeological Evaluation of Prehistoric Site CA-SDI-17423 for the San Marcos Creek Project, City of San Marcos, California
11743	2004	Wright, G.	Cultural Resources Survey Report For: TPM 20800, Log No. 04-02-002 - Crossroads - Negative Findings
12025	2005	Guerrero, M., L. Tift, and D. Gallegos	Cultural Resource Survey for the Grand Avenue Bridge Project San Marcos, California
12039	2007	Guerrero, M., and D. Gallegos	Cultural Resources Monitoring Report for the North County Transit District (NCTD) Sprinter Rail Project Oceanside to Escondido, California
12335	2009	McKenna, J.	Historic American Building Survey: San Marcos Historical Society, 270 W. San Marcos Blvd. San Marcos, San Diego County, California 92069

Report Number (SD-)	Year	Author	Report Title
12336	2009	McKenna, J.	Historic American Building Survey: San Marcos Elementary School, 300 W. San Marcos Blvd. San Marcos, San Diego County, California 92069
12391	2008	Clowery- Moreno, S. L. Pierson, and B.F. Smith	A Phase I Archaeological Assessment of the Fitzpatrick Condominiums Project
13212	2011	Hector, S.	Authorization for the San Marcos South Lake Park Master Plan Project, City of San Marcos, San Diego County, California
13222	2011	U.S. Army Corps of Engineers	Section 404 Authorization for The San Marcos South Lake Park Master Plan Project, City of San Marcos (File No. SPL-2009-00040-MLM), San Diego County, California
13437	2012	Robbins-Wade, M.	Westlake Village- Archaeological Monitoring
13495	2011	Giacinto, A.	Cultural Resource Study for the Uomp Project, San Diego County, California
14029	2012	Gunderman, S., N. Hanten, and S. Ni Ghabhlain	Cultural and Historical Resource Survey Report for the Rancho Coronado Project, City of San Marcos, San Diego County, California
14041	2011	Davish, S., J. Kintz, M. Pumphrey, and S. Ni Ghabhlain	Treatment Plan for 918 Discovery St. in Anticipation of Relocation, San Marcos, California
14098	2009	Laylander, D., and S. Ni Ghabhlain	A Cultural Resources Survey for the University District Project City of San Marcos, California
*14140	2003	Robbins-Wade, M.	<i>Archaeological Records Search and Literature Review, Vallecitos Water District Master Plan Update San Diego County, California</i>
14581	2012	ASM Affiliates	Section 106 Consultation for the San Marcos Sewer Interceptor Project
14702	2012	Comeau, B., and M. Hale	Cultural Resources Survey Report for the Palomar Station Project, San Marcos, San Diego County, California
14859	2013	Loftus, S.	Cultural Resource Records Search and Site Survey AT&T Site SD0749 Mission Sports Park 931 Bailey Court "A" San Marcos, San Diego County, California 92069
15426	2013	H. Haas and R. Ramirez	Archaeological Monitoring for the Park View Apartments Project, San Marcos, San Diego County, California
16284	2015	Smith, B. F.	Cultural Resources Monitoring Report for the Promenade at Creekside Project (SDP 10-346; P14-0051 [SC14-002]) Between Bent Avenue and Grand Avenue within the San Marcos Creek Specific Plan, City of San Marcos, San Diego County, California
16556	2014	Gorman, J., S. Castells, and S. Ni Ghabhlain	Historic Resources Evaluation Report for Commercial Buildings at 304 and 312 Mission Road, San Marcos, California

Report Number (SD-)	Year	Author	Report Title
16565	2013	Gunderman Castells, S., N. Hanten, and S. Ni Ghabhlain	Cultural Resource Survey Report for the Heart of the City Specific Plan Amendment for Rancho Coronado, City of San Marcos, San Diego County, California
16658	2013	Hale, M., and S. Gunderman Castells	Archaeological Monitoring and Significance Evaluation Of CA-SDI-20363 for the San Marcos High School Construction Project, San Diego County, California
16753	2016	Smith, B.F.	Cultural Resources Monitoring Report for the Rancho Coronado Project (Tentative Tract TSM 15-006)
17121	2017	Smith, B.F.	Cultural Resources Monitoring Report for the North County Shooting Center Project, City of San Marcos, California (APN 219-122-11)
17165	2013	Comeau, B.	Cultural Resources Survey Letter Report for the Pipeline 4 Portion of the Construction Monitoring for the Pipeline 3 Desalination Relining and Pipeline 4 Vert Modifications Project
17207	2014	Gunderman Castells, S.	Cultural Resources Study for the Corner@2Oaks Project, San Marcos, San Diego County, California
17208	2017	Gunderman Castells, S.	Negative Cultural Resources Monitoring Report for the Corner@2Oaks Project, San Marcos, California
17240	2017	Smith, Brian F.	Cultural Resources Monitoring Report for the Rancho Tesoro Project, City of San Marcos, San Diego County, California
18087	2011	Ni Ghabhlain, S.	Updated Cultural Resources Study for the San Marcos Creek Specific Plan Area, San Marcos, California
18207	2019	Clark, T., and C. Duran	Cultural Resources Monitoring Report for the Los Posas Creek and Grand Avenue Capital Improvement Project, City of San Marcos, San Diego County, California
18210	2018	Campbell-King, B., and J. Power	Cultural Resources Due Diligence Study for the CVS Project, City of San Marcos, San Diego County, California
18325	2020	Robbins-Wade, M., T. Cooley, and D. Diaz de Leon	Cultural Resources Monitoring Report for the Palomar Arboretum Project, San Marcos, San Diego County, California
18578	2015	Scharlotta, I.	Cultural Resources Monitoring Compliance Report for the Eastgate Housing Project, San Marcos, San Diego County, California
19329	2016	Price, H. J., and R. Shultz	Cultural Resources Survey for the Villa Serena Project, San Marcos, California
20088	2021	Noble, M., and J. Tansey	Archaeological Monitoring for the SDG&E CMP TL684 Pole Replc, 5 Poles, San Marcos, San Diego County, California (SDG&E ETS #46139.01)

* Overlaps project area/APE

4.2 PREVIOUSLY RECORDED RESOURCES

The SCIC has a record of 56 previously recorded cultural resources within a one-mile radius of the project, none of which are located within the project area (Table 2, *Previously Recorded Resources within One Mile of the Project Area*). In general, the sites recorded within the one-mile search radius

consist of prehistoric resources comprising habitation and village sites, bedrock milling, artifact and lithic scatters, a rock shelter site, and isolated artifacts. Three multi-component sites are recorded as a habitation site with historic artifacts; a bedrock milling site with lithics, faunal bone, and historic refuse; and a lithic and artifact scatter with bedrock milling and historic refuse.

Twelve historic sites have been documented within one mile of the project, none of which are documented within the project area itself. These include the burned remains of a residence with associated historic refuse; three historic refuse scatters; a concrete pad with floor tiles and an associated chimney-like structure; a two-story Vernacular Victorian farmhouse located at 918 Discovery Street constructed in 1900 and found to be CRHR eligible (P-37-030252); two sites documented as foundations for chicken coops, one of which had an associated drain (P-37-030379 and P-37-030380); a portion of the NRHP-eligible historic Highway 395; a Mid-Century Modern commercial building at 304 West Mission Road dating to 1954; a Mid-Century Modern commercial building at 312-318 West Mission Road dating to 1955-1956 (the Buelow Building); and the remains of a historic structure including a foundation with associated driveway, brick wall, and a set of stairs (P-37-036501).

Table 2
PREVIOUSLY RECORDED RESOURCES WITHIN ONE MILE OF THE PROJECT AREA

Primary Number (P-37-###)	Trinomial (CA-SDI-#)	Age	Description	Recorder, Date
005581	5581	Prehistoric	Habitation with bedrock milling, lithics, ceramics, artifacts, fire-affected rock, and ground stone	Robbins-Wade, M., 2020; DeBarros, P., 2005; Varner, G., 1978
005582	5582	Prehistoric	Lithic scatter	Varner, G., 1978
005583	5583	Prehistoric	Lithic scatter	Varner, G., 1978
005584	5584	Prehistoric	Bedrock milling with lithics	Franklin, R., 1977
005632	5632	Prehistoric	Lithic scatter, bedrock milling feature, shell	Briggs, S., M. Robbins-Wade, and T. Stoneburner, 2012; Franklin, R., 1977
005633	5633	Prehistoric	Lithic scatter, ceramic scatter, bedrock milling feature, burials, habitation debris, shell	Gallegos, D. and M. Guerrero, 2007; James. D., R. Bark, B. Glenn, J. Sabio, and T. Cooley, 1996; Franklin, R., 1977
005641	5641	Prehistoric, Historic	Habitation with lithics, ceramics, bone, bedrock milling, and historic artifacts	O'Neill, D., 1984; Varner, G., and M. Thorp, 1978
005642	5642	Prehistoric	Lithic scatter with ground stone	Varner, G., and M. Thorp, 1978
005643	5643	Prehistoric	Isolate (core fragments)	Varner, G., and M. Thorp, 1978
005644	5644	Prehistoric	Lithic scatter	Varner, G., and M. Thorp, 1978
005645	5645	Prehistoric	Lithic scatter	Varner, F. and M. Thorp, 1978
005646	5646	Prehistoric	Lithic scatter	Varner, G. and M. Thorp, 1978

Primary Number (P-37-##)	Trinomial (CA-SDI-#)	Age	Description	Recorder, Date
005647	5647	Prehistoric	Lithic scatter with ground stone and bedrock milling feature	Varner, G., 1976
005648	5648	Prehistoric	Lithic scatter with ground stone	Varner, G., 1976
005649	5649	Prehistoric	Lithic scatter with shell and bedrock milling	Varner, G., 1976
008720	8720	Prehistoric	Bedrock milling feature (destroyed)	Tift, L., 2014; Gunderman, S., 2011; Carrillo, C. and H. Price, 1981; Bissell, R., 1991
008814	8814	Historic	Residential remains (burned) including historic refuse	Roth, L., 1981
008815	8815	Prehistoric	Lithic scatter	Roth, L., 1981
008816	8816	Prehistoric	Lithic scatter with shell	Roth, L., 1981
011661	11661	Prehistoric	Lithic scatter	Crull, S. and B. Kelley, 1990
011662	11662	Prehistoric	Rock shelters with lithics	Smith, K. and D. Whitemarsh, 1990
011808	11808	Prehistoric	Bedrock milling	Rogers, A., 2021; Becker, K., 1989
011809	11809	Prehistoric	Bedrock milling	Pham, A., J. Colston, Z. Lefevre, M. Murillo, and P. Hadel, 2017; Becker, K., 1989
012592	12592/H	Multicomponent	Bedrock milling, lithics, faunal bone, historic refuse	Huey, D. and E. Baker, 1992
012593	12593/H	Multicomponent	Lithic and artifact scatter, bedrock milling, historic refuse	Huey, D., and E. Baker, 1992
012594	12594H	Historic	Historic refuse scatter	Huey, D., and E. Baker, 1992
012595	12595	Multicomponent	Bedrock milling with lithics, one core tool, and historic refuse	Huey, D., and E. Baker, 1992
012596	12596H	Historic	Historic refuse scatter	Huey, D., and E. Baker, 1992
012735	12735	Prehistoric	Lithic scatter with artifacts, shell, and ground stone	Gunderman, S., 2010; Bissell, R., 1992; Bissell, R., 1991
014950	---	Prehistoric	Isolate (scraper)	Crull, S. and B. Kelley, 1990
015064	---	Prehistoric	Isolate (mano)	Saunders, D., 1991
015579	---	Prehistoric	Isolate (mano)	James, D., R. Bark, and T. Cooley, 1996
024911	16492	Prehistoric	Lithic scatter with ground stone, tools, and faunal bone	Hunt, C., 2003
025556	16971	Prehistoric	Bedrock milling	Hunt, C., 2004
027375	17896	Prehistoric	Bedrock milling feature	Pham, A., J. Colston, Z. Lefevre, M. Murrillo, P. Hadel, 2017; Tift, L. and K. Hovland, 2005

Primary Number (P-37-##)	Trinomial (CA-SDI-#)	Age	Description	Recorder, Date
027376	17897	Prehistoric	Bedrock milling	Pham, A., J. Colston, Z. Lefevre, M. Murrillo, P. Hadel, 2017; Tift, L. and K. Hovland, 2005
027377	17898	Historic	Concrete pad with floor tiles, chimney-like structure	Pham, A., J. Colston, Z. Lefevre, M. Murrillo, P. Hadel, 2017
030252	---	Historic	Single family property (circa [ca.] 1900)	Huey, D., and E. Baker, 1992
030379	---	Historic	Foundations for chicken coops with an associated drain	Dalope, M., 2008
030380	---	Historic	Foundation for a chicken coop	Dalope, M., 2008
030654	19473	Prehistoric	Lithic scatter	Bissell, R., 1991
030655	19474	Prehistoric	Lithic scatter	Bissell, R., 1992
030656	19475	Prehistoric	Lithic scatter	Gunderman, S., 2010
030657	---	Prehistoric	Isolate (lithic)	Gunderman, S., 2011
030745	19524	Prehistoric	Lithic scatter, ceramic scatter	Meriwether, J. and M. Robbins-Wade, 2009
032160	20363	Prehistoric	Lithic scatter, habitation debris, shell fragment	Saunders, D., 1991
033557	---	Historic	Historic road (Highway 395)	Stringer-Bowsher, S., 2018; Stanley, T., 2017; Chasteen, H., 2017-2018; Manchin, K, and M. DeCarlo, 2015; Tift, L., 2013
036140	---	Historic	Commercial building (ca. 1954)	Gorman, J., and S. Castells, 2014
036141	---	Historic	Commercial building (ca. 1955-1956)	Gorman, J., and S. Castells, 2014
036501	22095	Historic	Foundation, driveway, brick wall, and stairs	Pham, A., Z. LaFevre, and M. Murrillo, 2017
039088	22954	Historic	Historic refuse scatter	Faith, D., 2022; Clark, T., 2019
039597	23151	Prehistoric	Lithic scatter	Brian F. Smith and Associates, 2021; Tift, L. and K. Hovland, 2005
040518	---	Historic	Isolate (glass bottle, ca. 1968)	M. Murrillo, 2022
040519	---	Prehistoric	Isolate (mano)	Hadel, P., 2022
040520	---	Prehistoric	Isolate (obsidian biface)	Sharp-Garcia, P., 2022
040521	23441	Prehistoric	Lithic scatter, ground stone, faunal remains, shell, and one historic ceramic fragment	Faith, D., 2023

4.3 OTHER ARCHIVAL RESEARCH

The town site of San Marcos is recorded northwest of the project area on the 1893 and 1901 Escondido and the 1901 San Luis Rey topographic maps, and there are several roads and a few mapped structures within and surrounding the project area. The 1948 USGS 7.5' San Marcos map places the city of San Marcos to the east-northeast along the Atchison, Topeka and Santa Fe Railroad, as well as showing the presence of the McCormick Airfield within the project area and the San Marcos Valley Airport to the northeast. By the 1968 USGS 7.5' San Marcos map, both airfields are gone, though the hangar from the McCormick airfield is still present, and SR 78 is represented. This continues to be the case on the 1983 map, though there are several additional commercial and industrial buildings in the area surrounding the project area. In general, the increase in residential, commercial, and infrastructure development surrounding the project area is visible throughout the aerial photographs from 1938, 1947, 1953, 1964, 1967, 1984, and 1994 (NETR Online 2023). The aerials show the area as being undeveloped in 1938, before being developed as an airfield in 1947, which, while still present in 1953, looks to be in disrepair. By 1964, the airfield is clearly no longer in use, and there are several structures along San Marcos Boulevard, which continues to be the case in the 1967 aerial, and by the 1978 aerial, the surrounding areas have been developed into commercial and industrial structures. The original hangar and surrounding area continued to see use until 2002 with the construction of the Costco and associated parking lot currently occupying the project area.

4.4 NATIVE AMERICAN CONTACT PROGRAM

HELIX contacted the NAHC on September 07, 2023 for a Sacred Lands File search and a list of Native American contacts for the project area. The NAHC indicated in a response dated October 17, 2023, that the Sacred Lands File search was positive. Letters were sent on October 18, 2023 to Native American representatives and interested parties identified by the NAHC. Five responses have been received to date (Table 3, *Native American Contact Program Responses*). If any additional responses are received, they will be forwarded to City staff. Native American correspondence is included as Appendix B (Confidential Appendices, bound separately).

Table 3
NATIVE AMERICAN CONTACT PROGRAM RESPONSES

Contact/Tribe	Response
Campo Band of Mission Indians	Responded on October 26, 2023: We would like to request that Campo Band of Mission Indians is consulted with, and that Campo is involved with mitigation/treatment planning. Campo can also accommodate support with our Native Monitoring Team.
San Pasqual Band of Mission Indians	Responded on October 31, 2023: We have consulted our maps and determined that the project as described is not within the boundaries of the recognized San Pasqual Indian Reservation. It is, however, within the boundaries of the territory that the tribe considers its Aboriginal Territory. Furthermore, as the project progresses, we would like to engage in formal government-to-government consultation under AB-52 so that San Pasqual can have a voice in the development of the measures that will be taken to protect these sites and mitigate any adverse impacts. We would appreciate being given access to any cultural resource reports that have been or will be generated during the environmental review process so we can contribute most effectively to the consultation process. San Pasqual can provide cultural monitoring for this project.

Contact/Tribe	Response
Rincon Band of Luiseno Indians	<p>Responded on November 09, 2023: We have received your notification regarding the above referenced project and we thank you for the opportunity to consult on the project. The identified location is within the Traditional Use Area of the Luiseño people and within the Tribe’s specific Area of Historic Interest (AHI). As such, the Rincon Band is traditionally and culturally affiliated to the project area.</p> <p>After review of the provided documents and our internal information, the Rincon Band has specific concerns that the project may impact tangible Tribal Cultural Resources. The project site is culturally sensitive, with many resources and known gathering areas. At this time, the Rincon Band would like to consult directly with the lead agency, to review any potential impacts in this project site.</p>
Pechanga Band of Indians	<p>Responded on November 16, 2023: ...we have determined the project area is not on Reservation lands, although it is within Our Ancestral Territory. We are interested in participating in this project based upon our Traditional Knowledge of the area and considering this project’s location is 3.4 miles southwest of a Sacred Lands Filing. The proposed project lies directly within a documented Ancestral Placename Village. Additionally, the APE is 1.5 to 2.5 miles away from four additional Places. The immediate proximity to San Marcos Creek is very concerning to the Tribe. Please note that we are interested in participating in surveys in the Ancestral territory.</p>
San Luis Rey Band of Mission Indians	<p>Responded on November 21, 2023: Our Tribe has intimate knowledge about the many discoveries made throughout the Project Area and is aware of cultural resource sites within close proximity to the proposed Project. We strongly urge caution in assessing the land encompassing the Project for any ground disturbing purposes, as well as incorporating the presence of a Luiseño Native American monitor during all ground disturbing activities (including but not limited to any and all boring activities) and cultural resource assessment surveys.</p>

4.5 SURVEY RESULTS

A site visit of the project site was conducted on December 1, 2023 by HELIX staff archaeologist Mary Villalobos and Santee Murillo from Pechanga and Shanee Ventura from San Luis Rey. The large Costco building is located at the south side of the property. There are open planters and landscaped areas surrounding the building and scattered throughout the property; areas of visible soil were checked for signs of cultural remains. No sites were identified, and the soil within landscaped areas of the property was fill.

5.0 DISCUSSION

The project site at 150 South Bent Avenue in the City of San Marcos was surveyed on December 1, 2023 by a HELIX archaeologist and Tribal monitors from Pechanga and San Luis Rey. The property is developed with the Costco facility, including a warehouse building and parking lot. No ground visibility exists within the property, and the areas where soils were visible are clearly landscaped with fill soil (Appendix D). This area of the City is highly sensitive for cultural resources based on the numerous sites that have been documented in the region, the majority of which are prehistoric.

Requests for Tribal input resulted in responses from Rincon, Pechanga, and San Luis Rey that the project is situated in an area of great sensitivity. All three Tribes cited the presence of known cultural resources within the region. In addition, a search of the Sacred Lands File was positive, although the exact location

of any known Sacred Sites was not provided. San Pasqual, Campo, Pechanga, Rincon, and San Luis Rey all requested formal consultation with the City, and copies of their responses are included in Confidential Appendix C.

6.0 MANAGEMENT CONSIDERATIONS

Based on the results of the current study, no historical resources, as defined by CEQA, will be affected by the San Marcos Costco Wholesale Fuel Facility Project.

While no historical resources or Native American cultural resources have been identified within the project area, 51 previously recorded cultural resources are situated within a one-mile radius of the project. As noted by the NAHC, the area is sensitive for cultural resources, and the result of a Sacred Lands File search was positive. Rincon, Pechanga, and San Luis Rey cite the project as being extremely sensitive for the presence of cultural resources. The project site is completely developed and the natural ground surface cannot be observed. Additionally, the project site is located within alluvial soils; as such, there is a potential for subsurface cultural resources to be present within the project area.

Due to this potential, it is recommended that an archaeological and Native American monitoring program be implemented during grading or other ground-disturbing activities (e.g., trenching for utilities). The monitoring program would include attendance by the archaeologist and Native American monitor at a preconstruction meeting with the grading contractor and the presence of archaeological and Native American monitors during initial ground-disturbing activities on site. Both archaeological and Native American monitors would have the authority to temporarily halt or redirect grading and other ground-disturbing activity in the event that cultural resources are encountered. If significant cultural material is encountered, the monitors will coordinate with the Monitoring Tribe, the applicant, and the City of San Marcos staff to develop and implement appropriate avoidance, treatment, or mitigation measures. With a mitigation measure for archaeological and Tribal monitoring applied, impacts to cultural resources identified during grading would be reduced below a level of significance.

In the event that human remains are discovered, the County Coroner shall be contacted. If the remains are determined to be of Native American origin, the Most Likely Descendant, as identified by the NAHC, shall be contacted to determine proper treatment and disposition of the remains. All requirements of Health & Safety Code §7050.5 and PRC §5097.98 shall be followed.

Should the project limits change to incorporate new areas of proposed disturbance, an archaeological survey of these areas will be required.

7.0 REFERENCES

- Almstedt, Ruth Farrell
1974 Bibliography of the Diegueno Indians. Ballena Press, Ramona, CA.
- Bean, Lowell John, and Katherine Siva Saubel
1972 Temalpakh: Cahuilla Indian Knowledge and Usage of Plants. Malki Museum Press, Banning, California.
- Bean, Lowell John, and Florence C. Shippek
1978 Luiseño. In *California*, edited by Robert F. Heizer, pp. 550-563. Handbook of North American Indians, vol. 8. William C. Sturtevant, general editor. Smithsonian Institution, Washington, D.C.
- Beauchamp, R. Mitchell
1986 *A Flora of San Diego County, California*. Sweetwater River Press, National City.
- Bowman, Roy H.
1973 *Soil Survey: San Diego Area*. United States Department of Agriculture. Beltsville, MD.
- Brackett, R.W.
1939 *A History of the Ranchos of San Diego County, California*. Union Title Insurance and Trust Company.
- Bull, Charles S.
1983 Shaking the Foundations: The Evidence for San Diego Prehistory. *Casual Papers: Cultural Resource Management* 1(3):15-64. Cultural Resource Management Center, San Diego State University.
- Burt, W. H., and R. P. Grossenheider
1976 *A Field Guide to the Mammals*. (Third Edition). Houghton Mifflin Company, Boston.
- Carrico, Richard L.
2008 *Strangers in a Stolen Land: Indians of San Diego County from Prehistory to the New Deal*. Sunbelt Publications, San Diego.
- Carrico, Richard L., Theodore G. Cooley, and Brian Glenn
1994 *East Mission Gorge Interceptor Pump Station and Force Main Project Cultural Resources Data Recovery Report for Site CA-SDI-9243, San Diego County, California*. Ogden Environmental and Energy Services, San Diego.
- Carroll, William
1975 *San Marcos, A Brief History*. San Marcos, California.
- Chace, Paul G., and Janet Hightower
1979 *An Archaeological Survey of the Atwood Property Near Valley Center, County of San Diego*. Paul G. Chace & Associates, Escondido, California.

Chace, Paul G., and Mark Q. Sutton

- 1990 The Kelly Site Complex: An Inland Encinitas Tradition Settlement in San Diego County. Pacific Coast Archaeological Society Quarterly, Vol. 26, No. 1, pp. 42-59. Paul G. Chace & Associates, Escondido, California.

Christenson, Lynne E.

- 1990 *The Late Prehistoric Yuman People of San Diego County, California: Their Settlement and Subsistence System*. Ph.D. dissertation, Department of Anthropology, Arizona State University, Tempe. University Microfilms, Ann Arbor.

City of San Marcos

- 2012 City of San Marcos General Plan. Electronic document available at <https://www.san-marcos.net/home/showpublisheddocument/8482/636570702255970000>, accessed January 2024.

- 2023 City of San Marcos Archaeological and Historical Resources Consultant Guidelines. Available at: <https://www.san-marcos.net/home/showpublisheddocument/27022/638090369405800000>, accessed October 2023

Cline, Lora

- 1984 *Just Before Sunset*. J and L Enterprises, USA.

Cooley, Theodore G.

- 2006 Continuing Discoveries of the San Dieguito and Other Cultural Patterns in and around the C.W. Harris Site (SDI-149). Paper presented at the Annual Meetings of the Society for California Archaeology, San Jose.

- 2008 Dating at the Spindrift Site Relative to Other La Jolla Sites and the Adjacent San Diego Coastal Area. Paper presented at the Annual Meetings of the Society for California Archaeology, Burbank.

Cooley, Theodore G., and Laura J. Barrie

- 2004 Archaeological Excavation at the Village of *Pa'Mu*, Ramona Valley, California. *Proceedings of the Society for California Archaeology* 17:43–56.

Cooley, Theodore G., and Patricia T. Mitchell

- 1996 *Limited Data Recovery Investigations at Site CA-SDI-11,767, a La Jolla Complex Site Along the Lower San Diego River Valley, Mission Valley West Light Rail Transit Project, San Diego, California*. Report prepared by Ogden Environmental and Energy Services Company, San Diego, and on file at the South Coastal Information Center, San Diego State University.

Cooley, Theodore G., Richard L. Carrico, and Carol Serr

- 2000 *Data Recovery Excavations Conducted at Archaeological Site CA-SDI-10,238 (SDM-W-36) Locus B, Solana Beach, San Diego County, California*. Report prepared by Mooney & Associates for the City of Solana Beach. Report on file at ICF Jones & Stokes, San Diego.

- Cuero, Delfina
1968 *The Autobiography of Delfina Cuero*. Dawson's Book Shop, Los Angeles.
- Des Lauriers, Matthew
2008 A Paleoindian Fluted Point from Isla Cedros, Baja California. *The Journal of Island and Coastal Archaeology* 3 (2), 271-276
- Dillon, Brian D.
2002 California Paleo-Indians: Lack of Evidence, or Evidence of a Lack? In *Essays in California Archaeology: A Memorial to Franklin Fenenga*. Edited by William J. Wallace and Francis A. Riddell. Contributions of the University of California Archaeological Research Facility, No. 60. Berkeley, California.
- Erlandson, Jon M., Graham, Michael H., Bourque, Bruce J., Corbett, Debra, Estes, James A. and Steneck, Robert S.
2007 "The Kelp Highway Hypothesis: Marine Ecology, the Coastal Migration Theory, and the Peopling of the Americas", *The Journal of Island and Coastal Archaeology*, 2:2, 161-174
- Ezell, Paul H.
1987 The Harris Site: An Atypical San Dieguito Site, or am I Beating a Dead Horse? In: *San Dieguito-La Jolla: Chronology and Controversy*, edited by Dennis Gallegos, pp. 15-22. San Diego County Archaeological Society Research Paper No. 1
- Farris, Glenn J.
1994 José Panto, Capitan of the Indian Pueblo of San Pascual, San Diego County. *The Journal of California and Great Basin Anthropology* 16(2): 149–161-41.
- Fitzgerald, Richard T., and Michael F. Rondeau
2012 A Fluted Projectile Point from Crystal Cove State Park, Orange County, Alta California. *California Archaeology* 4(2):247-256.
- Gallegos, Dennis R.
1985 Batiquitos Lagoon Revisited. Cultural Resource Management Casual Papers 2(1):1-13.
- Department of Anthropology, San Diego State University.
1987 A Review and Synthesis of Environmental and Cultural Material for the Batiquitos Lagoon Region. In *San Dieguito-La Jolla: Chronology and Controversy*, edited by Dennis Gallegos, pp. 23-34. San Diego County Archaeological Society, Research Paper 1.
1991 Antiquity and Adaptation at Agua Hedionda, Carlsbad, California. In: *Hunter-Gatherers of Early Holocene Coastal California*, edited by Jon M. Erlandson and Roger H. Colten, pp. 19-41. *Perspectives in California Archaeology Vol. 1*. University of California, Los Angeles.
1995 A Review and Synthesis of the Archaeological Record for the Lower San Diego River Valley. *Proceedings of the Society for California Archaeology* 8:195–206.

Hall, Clarence A., Jr.

2007 *Introduction to the Geology of Southern California and its Native Plants*. University of California Press, Berkeley.

Head, W.S.

1972 *The California Chaparral: An Elfin Forest*. Naturegraph, Healdsburg, California.

Hedges, Ken

1975 Notes on the Kumeyaay: A Problem of Identification. *Journal of California and Great Basin Anthropology* 2(1):71-83

Hedges, Ken, and Christina Beresford

1986 *Santa Ysabel Ethnobotany*. San Diego Museum of Man Ethnic Technology Notes No. 20.

Hoffman, Ogden

1862 *Reports of Land Cases Determined in the United States District Court for the Northern District of California: June Term, 1853 to June Term, 1858, Inclusive*. N. Hubert, San Francisco

Hyland, Justin R. and Maria de la Luz Gutierrez

1995 An Obsidian Fluted Point from Central Baja California. *In Journal of California and Great Basin Archaeology* 17(1).

Jennings, C.W., Strand, R.G., Rogers, T.H., Boylan, R.T., Moar, R.R., and Switzer, R.A.

1977 Geological Map of California: California Division of Mines and Geology, Geological Data Map 2, scale 1:750,000

Kline, George E., and Victoria L. Kline

2007 Fluted Point Recovered from San Diego County Excavation. *Proceedings of the Society for California Archaeology* 20:55–59.

Knell, Edward J and Mark S. Becker

2017 Early Holocene San Dieguito Complex Lithic Technological Strategies at the C.W. Harris Site, San Diego County, California. *Journal of California and Great Basin Anthropology* Vol. 37, No. 2 (2017), pp. 183-201.

Koerper, Henry C., Paul E. Langenwalter II, and Adella Schroth

1991 Early Holocene Adaptations and the Transition Phase Problem: Evidence for the Allan O. Kelly Site, Agua Hedionda Lagoon. In: *Hunter-Gatherers of Early Holocene Coastal California*, edited by Jon M. Erlandson and Roger H. Colten, pp. 43-62. Perspectives in California Archaeology No. 1. University of California, Los Angeles.

Kroeber, A.L.

1925 *Handbook of California Indians*. Dover, New York. Originally published 1925 as *Bulletin 78* of the Bureau of American Ethnology of the Smithsonian Institution.

Langdon, Margaret

1975 A Grammar of Diegueño: The Mesa Grande Dialect. *University of California Publications in Linguistics*, 66. Berkeley, California

Lightfoot, Kent G., and Otis Parrish

2009 *California Indians and the Environment*. University of California Press, Berkeley.

Luomala, Katherine

1978 Tipai-Ipai. In *California*, edited by Robert F. Heizer, pp. 592-609. Handbook of North American Indians, vol. 8. William C. Sturtevant, general editor. Smithsonian Institution, Washington, D.C.

Masters, Patricia M., and Dennis R. Gallegos

1997 Environmental Change and Coastal Adaptations in San Diego County during the Middle Holocene. In: *Archaeology of the California Coast during the Middle Holocene*, edited by Jon M. Erlandson and Michael A. Glassow, pp. 11-21. *Perspectives in California Archaeology No. 4*. Institute of Archaeology, University of California, Los Angeles.

McCown, Benjamin E.

1955 *Temeku: A Page from the History of the Luiseño Indians*. Archaeological Survey Association of Southern California Papers 6. Los Angeles.

McDonald, Meg, and James D. Eighmey

2008 Late Period Prehistory in San Diego. In: Prehistoric and Historic Archaeology of Metropolitan San Diego: A Historic Properties Background Study, pp. 109-169. ASM Affiliates, Carlsbad, California.

McDonald, Meg, Carol Serr, and Daniel M. Saunders

1994 Phase III Data Recovery of CA-SDI-9243: A Multicomponent Prehistoric Site in the San Diego River Valley, Santee, California. Brian F. Mooney and Associates, San Diego.

Meighan, C.W.

1954 A Late Complex in Southern California Prehistory. *Southwestern Journal of Anthropology* 10(2):215-227.

Moratto, Michael J.

1984 *California Archaeology*. Academic Press, Orlando.

Moriarty, James R., III

1966 Cultural Phase Divisions Suggested by Typological Change Coordinated with Stratigraphically Controlled Radiocarbon Dating in San Diego. *The Anthropological Journal of Canada* 4(4): 20–30.

1967 Transitional Pre-Desert Phase in San Diego, California. *Science* 155:553-555.

1968 The Environmental Variations of the Yuman Area of Southern California, Parts I and II. *Anthropological Journal of Canada* 6(2):1–20 and 6(3):9–23.

Moyer, Cecil

1969 *Historic Ranchos of San Diego*, edited by Richard F. Pourade. Union Tribune, San Diego.

Munz, Philip A.

1974 *A Flora of Southern California*. University of California Press, Berkeley.

NETR Online

- 2019 *Historic Aerials*. Nationwide Environmental Title Research, LLC. Electronic document available at: <http://www.historicaerials.com>, accessed September 22, 2023.

Pigniolo, Andrew

- 2004 Points, Patterns, and People: Distribution of the Desert Side-Notched Point in San Diego County. *Proceedings of the Society for California Archaeology* 14:27-39.
- 2005 A Different Context: San Dieguito in the Mountains of Southern California. *Proceedings of the Society for California Archaeology* 18:247-254

Pigniolo, Andrew, Theodore G. Cooley, Joyce M. Clevenger, and Lynne E. Christenson

- 1991 The Archaeology of a La Jolla Complex Coastal Camp: Data Recovery Program at CA-SDI-10,945. ERC Environmental and Energy Services, San Diego.

Pryde, Philip R.

- 2004 *San Diego: An Introduction to the Region*. Sunbelt Publications; 4th edition.

Raven-Jennings, Shelly, and Brian F. Smith

- 1999 *Report of Excavations at CA-SDI-4608: Subsistence and Technology Transitions during the Mid-to-Late Holocene in San Diego County*. Report prepared by Brian F. Smith and Associates for the City of Poway. Report on file at the South Coastal Information Center (SCIC), San Diego State University, San Diego.

Robbins-Wade, Mary

- 1986 Rising Glen: SDM-W-143/146 (SDI-5213 C & D), a Major Coastal Luiseno Habitation Site. *Cultural Resource Management Casual Papers* 2(2):37-58. Department of Anthropology, San Diego State University.

Rogers, Malcolm J.

- 1939 *Early Lithic Industries of the Lower Basin of the Colorado River and Adjacent Desert Areas*. San Diego Museum of Man Papers No. 3. San Diego Museum of Man.
- 1966 *Ancient Hunters of the Far West*. Union-Tribune Publishing Company, San Diego.

Rondeau, Michael F., James Cassidy, and Terry L. Jones

- 2007 Colonization Technologies: Fluted Projectile Points and the First Californians. In *California Prehistory: Colonization, Culture, and Complexity*, edited by Terry L. Jones and Kathryn A. Klar. AltaMira Press, Lanham, Maryland.

Rossi, Vincent

- 2007 Poultry Production Profited Pluck Prohoroffs. *San Diego Union Tribune*, July 22, 2007.

Shipek, Florence C.

- 1987 *Pushed into the Rocks: Southern California Indian Land Tenure, 1769-1986*. University of Nebraska Press, Lincoln.

- Shumway, George, Carl L. Hubbs, and James R. Moriarty
1961 Scripps Estates Site, San Diego, California: A La Jolla Site Dated 5460 to 7370 Years Before the Present. *Annals of the New York Academy of Sciences* 93:37-132.
- Smith, Brian F., and James R. Moriarty, III.
1985 The Archaeological Excavations of Cultural Resources at the Batiquitos Pointe and Batiquitos Bluffs Projects, Sites W-84, W-88, W-95, W-97, and W-2552. Brian F. Smith and Associates, San Diego.
- Sparkman, Philip Stedman
1908 The Culture of the Luiseño Indians. *University of California Publications in American Archaeology and Ethnology* 8(4):187-234.
- Stebbins, Robert C.
1966 *A Field Guide to Western Reptiles and Amphibians*. Houghton Mifflin, Boston.
- Sutton, Mark Q. and Don Grenda
2012 Defining Level I at Malaga Cove (CA-LAN-138), California. *California Archaeology* 4(1):123-144.
- Trafzer, Clifford E. and Richard Carrico
1992 American Indians: The County's First Residents. In: *San Diego, An Introduction to the Region*. Ed. By Phillip Pryde. Prepared by the Department of Geography, San Diego State University. Kendall/Hunt Publishing Company. Dubuque, Iowa.
- True, Delbert L.
1958 An Early Complex in San Diego County, California. *American Antiquity* 23(3): 255–263.

1970 *Investigation of a Late Prehistoric Complex in Cuyamaca Rancho State Park, San Diego County, California*. Monograph 1. Archaeological Survey, University of California, Los Angeles.

1980 The Pauma Complex in Northern San Diego County: 1978. *Journal of New World Archaeology* 3(4): 1–30. Institute of Archaeology, University of California, Los Angeles.
- True, D.L., and Eleanor Beemer
1982 Two Milling Stone Inventories from Northern San Diego County, California. *Journal of California and Great Basin Anthropology* 4:233-26.
- True, D.L., and Paul D. Bouey
1990 Gladishill: A Probable San Dieguito Camp near Valley Center, California. *Journal of New World Archaeology* 7(4):1-28.
- True, D.L., and Georgie Waugh
1982 Proposed Settlement Shifts during San Luis Rey Times: Northern San Diego County, California. *Journal of California and Great Basin Anthropology* 4:34-54.

Vaughan, Sheila J.

- 1982 A Replicative Systems Analysis of the San Dieguito Component at the C. W. Harris Site. Unpublished Master's thesis, Department of Anthropology, University of Nevada, Las Vegas

Wallace, William J.

- 1955 A Suggested Chronology for Southern California Coastal Archaeology. *Southwestern Journal of Anthropology* 11:214-230.

Warren, Claude N.

- 1967 The San Dieguito Complex: A Review and Hypothesis. *American Antiquity* 32:168-185.
- 1968 Cultural Tradition and Ecological Adaptation on the Southern California Coast. In *Archaic Prehistory in the Western United States*, edited by C. Irwin-Williams, pp. 1–14. Eastern New Mexico Contributions in Anthropology 1(3). Portales, New Mexico.
- 1987 The San Dieguito and La Jolla: Some Comments. In *San Dieguito-La Jolla: Chronology and Controversy*, edited by Dennis Gallegos, pp. 73-85. San Diego County Archaeological Society, Research Paper 1.

Warren, Claude N. (editor)

- 1966 *The San Dieguito Type Site: M. J. Rogers' 1938 Excavation on the San Dieguito River*. San Diego Museum Papers No. 5. San Diego Museum of Man.

Warren, Claude N., and H. T. Ore

- 2011 The Age of the San Dieguito Artifact Assemblage at the C. W. Harris Site. *Journal of California and Great basin Anthropology* 31(1):81-97.

Weber, F.H., Jr.

- 1963 Geology and Mineral Resources of San Diego County, California: California Division of Mines and Geology, County Report 3. scale 1:125.000

White, Raymond C.

- 1963 Luiseño Social Organization. *University of California Publications in American Archaeology and Ethnology* 48(2):91-194.

Willey, Loraine M., and Christy Dolan

- 2004 Above and Below the Valley: Report on Data Recovery at San Vicente Reservoir, San Diego County, California. EDAW, San Diego. Prepared for the San Diego County Water Authority. Report on file at the South Coastal Information Center, San Diego State University.

Appendix A

Resumes

EDUCATION

Master of Arts,
Anthropology,
San Diego State
University, 1990

Bachelor of Arts,
Anthropology, University
of California, Santa
Barbara, 1981

REGISTRATIONS/ CERTIFICATIONS

Registered Professional
Archaeologist No. 10294

Caltrans, Professionally
Qualified Staff-
Equivalent Principal
Investigator for
Prehistoric Archaeology

Bureau of Land
Management
Statewide Cultural
Resource Use Permit
(California), FLPMA
Permit No. CA-18-35

County of San Diego,
Approved CEQA
Consultant for
Archaeological
Resources

Orange County
Approved
Archaeologist

Riverside County
Approved Cultural
Resources Consultant

PROFESSIONAL AFFILIATIONS

Society for American
Archaeology

Society for California
Archaeology

San Diego
Archaeological Center

San Diego History
Center

San Diego Museum of
Us

San Diego County
Archaeological Society

MARY ROBBINS-WADE, RPA

Principal Investigator



Ms. Robbins-Wade is HELIX's Cultural Resources Group Manager and Principal Archaeologist. With 43 years of experience, she manages and oversees archaeological, historic, and interpretive studies and programs, including contract management; design and implementation of survey, research, data recovery, and construction monitoring programs; preservation plans and report preparation. Ms. Robbins-Wade has experience with a broad range of project types, including private developments and public infrastructure. She manages

the preparation of cultural resources studies both as stand-alone reports and also in support of CEQA and NEPA compliance efforts. Ms. Robbins-Wade has a strong working knowledge of local, state, and federal laws addressing the protection of archaeological and historical resources. Her Native American consultation experience includes coordinating Native American tribal consultations conducted pursuant to CEQA as revised by Assembly Bill 52 (2014 Session), as well as providing support for federal agency government-to-government consultations with federally recognized tribes pursuant to Section 106 of the National Historic Preservation Act (NHPA). Ms. Robbins-Wade is a Registered Professional Archaeologist (RPA) and meets the U.S. Secretary of the Interior's Professional Qualifications for prehistoric and historic archaeology.

Carlsbad Trails Master Plan Constraints Analysis and IS/MND (2015 - 2015). Cultural Resources Task Manager for the analysis of the Carlsbad Trails Master Plan, which includes existing and proposed recreational trails throughout the City. Conducted an initial screening of potential cultural resources issues that may affect discrete projects within the Trails Master Plan. Also developed protocols for addressing cultural resources under the Trails Master Plan. Work performed for the City of Carlsbad.

Recycled Water Easterly Mains Extension SRF Loans Processing Assistance (2015 - 2016). Cultural Resources Task Lead/Principal Investigator for the cultural resources technical report in support of the CEQA-Plus environmental review for the SWRCB SRF Program. The project includes 24-inch recycled water mains, a 12-inch brine line, and small diameter fiber optic conduit. Cultural resources study included records search, Sacred Lands File search and tribal outreach, survey of newly added segments not covered in previous CEQA document, coordination with SWRCB staff, and preparation of a comprehensive cultural resources survey technical report to comply with both CEQA and federal requirements. Much of the project alignment is along Escondido Creek.

Cemetery Area Water Pipeline Replacement-Construction Monitoring (2015 - 2016). Project Manager/Principal Investigator for a water pipeline replacement project in eastern Escondido, located partially within a historic cemetery. Initial work included a cultural resources survey and a historic study of the cemetery; HELIX later conducted cultural resources monitoring during construction. Oversaw historic study, cultural

resources survey, and monitoring. Responsible for Native American outreach and report preparation. Work performed for the City of Escondido.

Emergency Storage Pond Project (2018 - 2018). Project Manager/Principal Investigator for a cultural resources testing program in conjunction with the Escondido Recycled Water Distribution System - Phase 1. Two cultural resources sites that could not be avoided through project design were evaluated to assess site significance and significance of project impacts. Work included documentation of bedrock milling features, mapping of features and surface artifacts, excavation of a series of shovel test pits at each site, cataloging and analysis of cultural material recovered, and report preparation. The project is located in an area that is sensitive to both the Kumeyaay and Luiseño people, requiring close coordination with Native American monitors from both groups. Work performed for the City of Escondido.

Membrane Filtration Reverse Osmosis Facility Environmental Consulting (2019 - 2019). Principal Archaeologist for the cultural resources technical study in support of CEQA and CEQA-Plus documentation for the Membrane Filtration Reverse Osmosis (MFRO) Facility Project proposed by the City of Escondido. Provided senior technical oversight and quality control for cultural resources survey and technical report prepared to assess compliance with state and federal regulations.

Oceanside Water Utilities Department As-Needed Environmental Consulting Services, 2013-2015 (2015 - 2016). Cultural Resources Task Lead/Principal Investigator for an on-call contract with the City of Oceanside Water Utilities Department. HELIX is providing on-call environmental consulting services, including CEQA compliance documents, surveys, studies, construction monitoring, and related services. Project types include reservoirs, pump stations, lift stations, pipelines, and treatment plants. Work performed for the City of Oceanside Water Utilities Department.

Oceanside Water Utilities Department On-Call Environmental Consulting Services 2016-2017 (2016 - 2017). Cultural Resources Task Lead/Principal Investigator for an on-call contract with the City of Oceanside Water Utilities Department. HELIX is providing on-call environmental consulting services, including CEQA compliance documents, surveys, studies, construction monitoring, and related services. Project types include reservoirs, pump stations, lift stations, pipelines, and treatment plants. Work performed for the City of Oceanside Water Utilities Department.

Oceanside Water Utilities Dept On-Call Environmental Consulting Services, 2017-2022 (2018 - 2021). Cultural Resources Task Lead/Principal Investigator for three consecutive on-call contracts with the City of Oceanside Water Utilities Department. Oversaw the preparation of cultural resource reports, coordinates with Native American tribes, and directed construction monitoring teams for projects as part of this contract. Project types include reservoirs, pump stations, lift stations, pipelines, and treatment plants.

Vista Vineyards (2014 - 2015). Project Manager/Principal Investigator in a cultural resources survey and testing program for a proposed residential development in the City of Vista. The 15.2-acre project is located along Buena Vista Creek, in an area that is culturally sensitive to the Luiseño people, and two archaeological sites within the project had previously been assessed as significant cultural resources. Overseeing background research, field survey, testing, recording archaeological sites, Native American outreach and coordination, and report preparation. The aim of the cultural resources study was to supplement the previous testing work, in order to guide the data recovery program at one site and to develop a preservation plan for the second site. In addition, the project included a historic study to provide the context and framework for recording a historic archaeological site associated with a significant pioneering family in Vista. Due to the project's location and the known significant cultural resources, the cultural resources study included outreach and coordination with the Luiseño community. The project addresses preservation of the significant resources. Work performed for City of Vista.

Camino Largo / PC6-056 (2014 - 2015). Project Manager/Principal Investigator for a cultural resources survey and testing program for a proposed residential development in the City of Vista. Oversaw background research, field survey, testing, site recordation, Native American coordination, and report preparation. Work performed for City of Vista.

Vista Grande (2015 - 2016). Project Manager/Principal Investigator for a cultural resources survey and testing project for a proposed residential development in the City of Vista. Work included testing/assessment of an archaeological site identified during the survey, as well as evaluation of a historic residence. Work performed for City of Vista.

353 East Broadway - Historic Evaluation (2016 - 2016). Project Manager for the historic assessment of Carpenters Hall in the City of Vista. The building is eligible for the NRHP and CRHR for its association with Carpenters and Joiners Local 2078 and their important activities in San Diego's North County labor movement and community support from 1948 through the 1980s. In addition, it is eligible for its embodiment of the distinctive characteristics of a minimalist approach toward the Art Deco architectural style. Work performed for the City of Vista.

Cultural Resources Study - P16-0310 Pheasant Hill MND (2017 - 2017). Project Manager/Principal Investigator for a cultural resources survey and testing program for a proposed residential development in the City of Vista. Oversaw background research, field survey, testing, site recordation, Native American coordination, and report preparation. Work performed for City of Vista.

Olive Avenue 15-Lot TSM/ANX Project (P17-0388) (2019). Project Manager for a cultural resources survey report for a 15-lot residential subdivision on a property to be annexed to the City of Vista. The cultural resources study included historic evaluation of a house and barn constructed in the 1930s. The project vicinity was identified as sensitive for cultural resources, and HELIX worked with tribal representatives to address potential impacts and mitigation measures. Work performed for the City of Vista.

Pamo Bridge (North) Geotech Boring Project (2017 - 2017). Cultural Resources Task Lead for environmental monitoring in conjunction with geotechnical borings for this proposed bridge replacement project in the Pamo Valley area of San Diego County. The project site is within a significant cultural resources site, CA-SDI-7933/H. This site, which covers almost 50 acres and encompasses the entire project area, has been described as part of the ethnographic Kumeyaay village of Pauha. It also includes historic features and artifacts related to a Civilian Conservation Corps (CCC) camp and US Forest Service Ranger Station. Cultural resources monitoring of geotechnical borings was required to ensure that there were no inadvertent impacts to this significant resource. Responsible for coordinating monitoring efforts by a subconsultant to HELIX and the Kumeyaay Native American monitors, as well as preconstruction sensitivity training and post-construction reporting.

Pacific Beach Light Rail Transit (LRT) Skyway Environmental Constraints Study (2015 - 2015). Cultural Resources Task Lead for provided the environmental constraints analysis of a proposed light rail project, including review of existing records search data, historic maps, and available cultural resource reports to provide an assessment of potential project constraints and recommendations for further study. Conducted on-line research and a drive-by field survey to identify potential historic buildings, sites, or districts that could be affected by the proposed project. Reviewed in-house records from past records searches from the South Coast Information Center to identify known cultural resources within the study area. Prepared cultural resources section of constraints memo. Work was performed as a subconsultant on a SANDAG contract.

Lake Elsinore Honda (Archaeological Services) (2018 - 2018). Project Manager/Principal Investigator for a cultural resources survey of a proposed auto dealership project in the City of Lake Elsinore. Oversaw background

research and field survey; responsible for Native American coordination and report preparation. Work performed for David Evans Associates, with the City of Lake Elsinore as the lead agency.

964 Urania Avenue (2016). Project Manager/Principal Investigator for a cultural resources survey and testing program for a proposed residential development in the City of Solana Beach. Oversaw background research, field survey, testing, site recordation, Native American coordination, and report preparation. Work performed for Hall Land Company.

Anza Street Townhomes Project (2020). Project Manager for a cultural resources study for a residential subdivision in the El Cajon area of the County of San Diego. Project included Native American outreach and coordination as part of the archaeological study. Work performed for Hallmark Communities.

San Onofre to Pulgas Double Track Phase 1 Project (2015 - 2015). Principal Archaeologist to conduct a cultural resources survey in conjunction with permitting for a railroad antenna along the Los Angeles to San Diego (LOSSAN) rail right-of-way through Marine Corps Base (MCB) Camp Pendleton. Oversaw records search update at the South Coastal Information Center; contacted the Native American Heritage Commission (NAHC) for a Sacred Lands File search and list of tribal contacts; responsible for report preparation. Work performed as a subconsultant to HNTB under an on-call contract with SANDAG.

Valiano Project (2015 - 2015). Project Manager/Principal Investigator for a cultural resources survey and testing project for a proposed residential development in the County of San Diego. Oversaw background research, field survey and testing, Native American coordination, report preparation, and development of a data recovery plan. Managed coordination and field meetings with both Kumeyaay and Luiseño representatives. The study included historic structures evaluation, as well as archaeological research. Work performed for Integral Partners Funding, LLC.

Villa Storia (2014 - 2015). Project Manager/Principal Investigator of a cultural resources survey for a proposed residential development in the City of Oceanside. Oversaw background research, field survey, Native American coordination, and report preparation. The project is in proximity to Mission San Luis Rey, in an area of great cultural significance to the Luiseño people, as well as archaeological sensitivity. The cultural resources study included background research, survey of the project area, archaeological testing/assessment, and coordination with the Native American community. Work performed for Integral Partners Funding, LLC.

Valiano Cultural Resources (2014 - 2015). Project Manager/Principal Investigator of a cultural resources survey and testing program for a 239-acre residential planned community in the Escondido area of the County of San Diego. Oversaw background research, field survey, testing, recording archaeological sites and assessment of historic structures, Native American outreach and coordination, and report preparation. Archaeological testing was conducted at several sites that could not be avoided through project design. The project site is in an area that is of cultural importance to both the Kumeyaay and Luiseño people; HELIX archaeologists worked with Native American representatives from both groups. Coordination was conducted to determine the feasibility of preserving bedrock milling features by moving them to open space areas within the project. Other archaeological sites were retained in open space through project design. Work performed for Integral Partners Funding, LLC.

San Elijo Joint Powers Authority Preliminary Design of Land Outfall Replacement and Permitting/CEQA Compliance (2015 - 2016). Cultural Resources Task Lead for this project in support of the replacement of a land outfall pipeline in the City of Encinitas. The new pipe would replace an existing 50-year-old pipe and would extend between the San Elijo Water Reclamation Facility and Cardiff State Beach. The cultural study supported environmental permits in addition to CEQA compliance. Oversaw updated records search and cultural resources

field survey, conducted Native American outreach, coordinated with State Parks, and co-authored technical report. Work performed for the San Elijo Joint Powers Authority.

Alvarado 2nd Pipeline Extension (2018 - 2018). Principal Archaeologist for a cultural survey for the proposed Alvarado 2nd Pipeline Geo-technical project located north of Interstate-8, within the Mission Bay Park, Linda Vista, Old Town, and Mission Valley Community Plan areas of the City of San Diego. Oversaw the preparation of a technical report for project completion.

Village Park Recycled Water (2015 - 2015). Project Manager/Principal Investigator of a cultural resources study for a proposed recycled water system consisting of approximately 6.6 miles of pipelines and a pump station mainly within existing roadways in the City of Encinitas. Oversaw background research, field checks, Native American coordination, and report preparation. Work performed for Olivenhain Municipal Water District.

Heritage Bluffs II (2014 - 2015). Project Manager/Principal Investigator for a cultural resources survey of approximately 170 acres and testing program at two archaeological sites, for a proposed residential development in the City of San Diego. Worked with project applicant and Red Tail on project design that would avoid impacts to a site area with cultural features and cremated human remains. Much of the work was completed prior to coming to HELIX, between 2007 and 2014. Work performed for Project Design Consultants.

Brightwater Ranch (2014 - 2015). Project Manager/Principal Investigator of a cultural resources study update for a residential development located on a 76-acre property in the Lakeside area of San Diego County. Oversaw updated research, report preparation, and Native American coordination. Work performed for County of San Diego.

Otay Water District Campo Road Sewer IS/MND (2014 - 2016). Project Manager/Principal Investigator of a cultural resources survey for a project replacing approximately 9,225 linear feet of 10-inch gravity sewer with a new 15-inch gravity sewer system in the Rancho San Diego area, near the Sweetwater River. Overseeing background research, field survey, Native American coordination, and report preparation. Work performed as subconsultant for Rick Engineering, with Otay Water District as lead agency.

30th St Pipeline Replacement (2014 - 2015). Project Manager/Principal Investigator for a 3.4-mile City of San Diego pipeline replacement project that traverses several historic neighborhoods in North Park, South Park, Golden Hill, and Southeastern San Diego. Oversaw background research and report preparation. Work performed for Rick Engineering.

Torrey Meadows Drive Overcrossing at SR-56 (2014 - 2014). Project Manager/Principal Investigator on a cultural resources survey for a proposed bridge over SR-56, which would connect two existing termini of Torrey Meadows Drive in the Carmel Valley community of the City of San Diego. The project is being undertaken by the City, but includes some Caltrans right-of-way, necessitating Caltrans encroachment permits. Oversaw survey, report preparation, and coordination with Caltrans cultural resources staff. Work performed as subconsultant for T.Y. Lin International, with City of San Diego as lead agency.

Park Circle - Cultural Resources (2014 - 2019). Project Manager/Principal Investigator of a cultural resources survey and testing program for a proposed 65-acre residential development in the Valley Center area of San Diego County. The project is located along Moosa Creek, in an area that is culturally sensitive to the Luiseño people. Oversaw background research, historic study, field survey, testing, recording archaeological sites and historic structures, and report preparation. Responsible for Native American outreach and coordination. The cultural resources study included survey of the project area, testing of several archaeological sites, and outreach and coordination with the Native American community, as well as a historic study that addressed a mid-20th century dairy barn and a late 19th century vernacular farmhouse. Work performed for Touchstone Communities.

Archaeological Survey SIO Site SDI-525 (2015 - 2016). Project Manager/Principal Investigator for a cultural resources survey to assess the extent of a known significant cultural resource site and discuss with UC San Diego planning staff, the potential opportunities and constraints in this sensitive area of the campus. Work performed for UC San Diego.

Fire Station - Cultural Resources Services Project (2016 - 2016). Project Manager/Principal Investigator for a cultural resources survey in support of an IS/MND for this fire station project in the northern portion of the UC San Diego campus. Work performed for UC San Diego.

Lilac del Cielo (2014 - 2014). Project Manager/Principal Investigator of a cultural resources survey for a proposed 56.07-acre residential development in the Bonsall area of northern San Diego County. Oversaw field survey, recording three previously undocumented sites, and report preparation. Responsible for Native American coordination. Previous study had been accepted by County staff, but USACE required a new cultural resources survey. Work performed for Glenn Lukos Associates.

SDG&E Solar Sites (2014 - 2017). Project Manager/Principal Investigator for survey, testing/ assessment, and construction monitoring for proposed solar energy facilities at three locations in San Diego County: Pala, Valley Center, and Ramona. Oversaw background research, Native American coordination, all phases of fieldwork, site recording, and report preparation. Work performed for Merkel & Associates, Inc. under the jurisdiction of the County of San Diego.

Marisol Specific Plan Initiative (2017 - 2018). Senior Archaeologist reviewing the cultural resources report prepared by another consultant in conjunction with preparation of the cultural resources section of an EIR prepared to support the development of a hotel and resort property along the coast in Del Mar. The project falls within the boundaries of one of the last intact prehistoric coastal adaptation sites in southern California and is archaeologically very sensitive. Conducted peer review and provided comments to be incorporated into the revised report. Work performed for the City of Del Mar.

Del Mar River Path Extension, Phase 3 (2021 -). Principal Archaeologist responsible for completion of a records search, site survey, and preparation of the cultural resources report in support of Phase 3 of the Del Mar River Path Extension project, which lies along the shoreline of the San Dieguito River and Lagoon. Although no historic resources were found on site, due to the project location and important resources located within the vicinity, an archeological and tribal cultural resources monitoring program was recommended. Work performed for the City of Del Mar.

Buena Sanitation District Green Oak Sewer Replacement Project (2016 - 2017). Project Manager/Principal Investigator for a cultural resources testing program in conjunction with a proposed sewer replacement project for the City of Vista. Oversaw background research, fieldwork, site record update, Native American coordination, and report preparation. Work performed for Harris & Associates, Inc., with the City of Vista as the lead agency.

City of Oceanside's Condition Assessment and Access Improvements (2017 - 2019). Cultural Resources Task Lead/Principal Investigator for cultural resource survey, testing/assessment, and monitoring for constraints study/sensitivity analysis, as well as preparation of a technical report in support of a Program EIR for major sewer improvements, including a new lift station, new force main, and replacement of several sections of two pipelines in the raw sewage collection system and one secondary-treated effluent pipeline (Gravity Line, Force Main, and Land Outfall pipelines). Assisted the City of Oceanside with tribal consultation, as well. Work performed as a subconsultant to Infrastructure Engineering Corporation, with the City of Oceanside Water Utilities Department as the lead agency.

Palomar Station Pedestrian Bridge (2017 - 2017). Principal Investigator/Cultural Resources Task Lead for a cultural resources survey for a proposed pedestrian bridge that would span over West Mission Road, the Inland

Rail Trail, and the SPRINTER rail line to connect the Palomar College Transit Center with the SPRINTER Station and Palomar Station mixed-use development. As a Caltrans local assistance project, reports prepared were Caltrans-format Archaeological Survey Report (ASR) and Historic Property Survey Report (HPSR); oversaw report preparation and provided senior technical oversight for project. Work performed as a subconsultant to Kleinfelder, Inc., with the City of San Marcos as the lead agency.

Vista Flume - Historic Documentation (2016 - 2017). Project Manager for the Historic American Engineering Record-level documentation of the Vista Irrigation District Main Water Conveyance System (Vista Flume). Constructed between 1925 and 1927, the Vista Irrigation District bench flumes, tunnels, and siphon segments qualify for listing on the National Register of Historic Places (NRHP) and California Register of Historical Resources (CRHR). As the District's main water conduit for over 85 years, the structures have been indispensable in the area's development. In addition, the flumes and siphon are considered to be eligible for their unique design and method of construction. Work performed for the Vista Irrigation District.

Lilac Hills Ranch (2014 - 2017). Project Manager/Principal Investigator of a cultural resources survey and testing program for an approximately 608-acre mixed-use development in the Valley Center area. Oversaw background research, field survey, testing, recording of archaeological sites and historic structures, and report preparation. Responsible for development of the research design and data recovery program, preparation of the preservation plan, and Native American outreach and coordination. The project also included recording historic structures, development of a research design and data recovery program for a significant archaeological site, and coordination with the Native American community and the client to develop a preservation plan for a significant cultural resource. The project changed over time, so additional survey areas were included, and a variety of off-site improvement alternatives were addressed. Work performed for Accretive Investments, Inc. with County of San Diego as the lead agency.

Peacock Hill Cultural Resources (2014 - 2017). Project Manager/Principal Investigator of a cultural resources study update for a residential development in Lakeside. Oversaw updated research, fieldwork, lab work, analysis by forensic anthropologists, report preparation, and Native American coordination. In the course of outreach and coordination with the Native American (Kumeyaay) community, possible human remains were identified, prompting additional fieldwork, as well as coordination with the Native American community and forensic anthropologists. Work performed for Peacock Hill, Inc.

Escondido Emergency Recycled Water Storage Pond (2016 - 2018). Cultural Resources Task Lead for a project to construct additional emergency recycled water storage in the City of Escondido's wastewater system, which includes the treated effluent from the City's wastewater treatment facility. The scope included a cultural resources survey of potential pond locations and documentation of cultural resources identified. Oversaw background research, field survey, documentation of cultural resources, and report preparation. Responsible for Native American outreach and coordination. Work performed as a subcontractor to Water Synergy, Inc. for the City of Escondido.

Kelly Drive and Park Drive Complete Street Improvements (2017 - 2018). Senior Archaeologist providing senior technical oversight for the City of Carlsbad's Kelly and Park Drive Diet and Multi-Use Trail Project. HELIX is providing environmental compliance services, including preparation of a biological resources survey/jurisdictional delineation and report, cultural resources survey and report, and IS/MND for the project. Carlsbad is creating a balanced multi-modal transportation network, requiring reconfiguration of both Kelly Drive and Park Drive to create complete streets and provide trail linkage from El Camino Real to Agua Hedionda Lagoon. Part of the trail for this project is included in the Carlsbad Trails Master Plan Project. Work performed as a subconsultant to GHD, Inc., with the City of Carlsbad as the lead agency.

City of Vista Crescent Drive Sewer Improvements Project (2016 - 2019). Senior Archaeologist for the Crescent Drive Sewer Improvements project in the City of Vista. The project proposes to conduct sewer improvements to the sewer main and connecting sewer laterals within Crescent Drive. Provided senior project oversight and technical review of project deliverables. Work performed for KEH and Associates, Inc., with the City of Vista as the lead agency.

Vista Ridge Apartment Project (2014 - 2015). Project Manager/Principal Investigator for a cultural resources survey and a testing program at the previously recorded site CA-SDI-5345 to assess the significance of cultural resources within the project area and determine the significance of potential impacts. Given the amount of past disturbance and the paucity of cultural material, CA-SDI-5345 was determined not to be a significant archaeological resource under CEQA. Worked closely with the San Luis Rey Band and the Pechanga Band to address cultural concerns regarding the project area. Work performed for FF Realty, LLC, with the City of Vista as the lead agency.

Mission Cove Data Recovery (2014 - 2015). Project Manager/Principal Investigator for a cultural resources data recovery program at a significant archaeological site with cultural significance to the Luiseño people in the City of Oceanside. Prior to the data recovery program, worked with the client and the San Luis Rey Band of Mission Indians to redesign the project (an affordable housing/mixed-use development) to avoid impacts to cultural resources to the extent feasible. Oversaw background research, excavation and related fieldwork, cataloging and analysis, coordination of ancillary studies (e.g. radiocarbon analysis and shell analysis), Native American coordination, and report preparation. Analysis and report preparation are currently underway. The data recovery program was conducted to mitigate impacts that could not be avoided through project design. Work performed for National Community Renaissance.

Hacienda del Mar EIR (2016 - 2019). Senior Archaeologist for a proposed commercial development project for a senior care facility in Del Mar. Assisted in the preparation of associated permit applications and an EIR. Oversaw background research, updated records search and Sacred Lands File search, monitoring of geotechnical testing, coordination with City staff on cultural resources issues, and preparation of updated report. Prior to coming to HELIX, served as Cultural Resources Task Lead for the cultural resources survey for the project, conducted as a subcontractor to HELIX. Work performed for Milan Capital Management, with the City of San Diego as the lead agency.

Green Oak Villas Technical Reports (2016 - 2016). Project Manager/Principal Investigator for a cultural resources survey and testing program for a proposed multi-family residential development in the City of Vista. Oversaw background research, field survey, testing, site record update, Native American coordination, and report preparation. Work performed for Providence Capital Group, Inc., with the City of Vista as the lead agency.

Newage Carlsbad Luxury Resort Technical Studies (2017 - 2019). Project Manager/Principal Investigator for the development of a hotel and multi-family residences in south coastal Carlsbad near Batiquitos Lagoon. Oversaw preparation of a records search, Sacred Lands File search, Native American outreach, a review of historic aerial photographs and maps, and a pedestrian survey and prepared the resulting technical report. Work performed for the City of Carlsbad.

Viri Estates Convalescent Homes (2017 - 2018). Project Manager for a cultural resources survey and report for a proposed elder care facility in the City of Oceanside. Project included Native American outreach and coordination as part of the archaeological study. Work performed for Sekhi, LLC.

EDUCATION

Bachelor of Science,
Anthropology, University
of California, Riverside,
1997

REGISTRATIONS/ CERTIFICATIONS

Bureau of Land
Management
Statewide Cultural
Resource Use Permit,
California Permit No.
CA-18-35

CATHERINE A. WRIGHT

Project Manager



Ms. Wright has 25 years of experience performing cultural resource management in the West. She has performed the full range of archaeological and historic resource studies in California, Arizona and Nevada. This includes background research, surveys, site evaluations, and mitigation through data recovery and monitoring. She has prepared numerous cultural resource survey reports, site overviews, background summaries, survey and testing plans, and Integrated Cultural Resource Management Plans (ICRMPs). She acted as Quality

Assurance Manager for numerous large cultural resources contracts with the Department of Defense, including the Navy, Air Force, Army Corps of Engineers (Corps), and the US Army. Ms. Wright has also served as a Natural Resources Specialist for Naval Facilities Engineering Command (NAVFAC), Southwestern Division and has worked closely with NAVFAC personnel managing cultural resource contracts for NAVFAC Southwest and NAVFAC Atlantic. Ms. Wright has supported historic built environment studies, prepared interpretive programs and displays, and prepared portions of National Register of Historic Places district nominations.

Ms. Wright has considerable experience with the applications of the NHPA and with cultural resource requirements of CEQA and with CEQA Plus. Through her federal service, she is also familiar with the requirements of various Executive Orders guiding archaeological and historic resource studies. Ms. Wright has also worked with BLM, City and County of Riverside, California State Parks, Caltrans, Bureau of Indian Affairs (BIA), U.S. Forest Service (USFS), Bureau of Reclamation, Corps, Imperial Irrigation District (IID), Coachella Valley Water District, the City and County of San Diego, and Caltrans.

Escondido Brine Line Project (2019 - 2019). Cultural Resources Specialist for proposal preparation and budget tracking. Tracked expenditures to ensure the project did not exceed the contract amount. Work performed for the City of Escondido.

Oceanside Water Utilities Dept On-Call Environmental Consulting Services, 2017-2022 (2018 - 2019). Cultural Resource Specialist for the preparation of technical studies for archaeological and historic built environment issues in the city of Oceanside. Prepared numerous technical reports and proposals to ensure the City remains in compliance with the cultural resources requirements of CEQA and NEPA.

City of San Diego As-Needed Permitting Assistance for O & M Activities and Emergencies, July 2017 - June 2018 (2018 - 2018). Cultural Resources Specialist for preparation of a technical report to summarize pedestrian survey performed along the San Diego River. Summarized background research and the results of the survey. Work performed for the City of San Diego.

Sycamore-Watson Residential Project (2018 - 2018). Archaeological Peer Reviewer for a cultural resources survey technical report that summarized the cultural resources

work performed by a consultant on a 7-acre development property. The project area is sensitive for cultural and Tribal cultural resources. Provided critical feedback on the methods utilized and the recommendations provided in the report. Work performed for the City of Vista.

S. Santa Fe Heights Project (PC14-310) (2019). Cultural Resources Specialist for an archaeological survey for a proposed residential development on South Santa Fe Avenue in Vista. Prepared technical report for submission to the City of Vista.

Cactus II Feeder Transmission Pipeline IS/MND (2018 - 2018). Cultural Resource Specialist for a 4.5-acre survey in Moreno Valley for the proposed installation of a sewer line and associated facilities. Coordinated Native American monitoring, completed survey, and prepared a negative survey report. The project area is sensitive for cultural resources but the ground surface was obscured by grass. Recommended archaeological and Native American monitoring once construction commences. Work performed for Eastern Municipal Water District.

De Anza Sewer Force Main Project (Bio and Cultural Resources) (2018 - 2018). Cultural Resources Specialist for coordinating the services of a subcontractor to perform archaeological and paleontological monitoring services for Eastern Municipal Water District. Worked with subconsultant to ensure adequate staffing of the project during construction. Work performed for Eastern Municipal Water District.

Dale 2199C Pressure Zone Looping Pipeline Project (2019). Cultural Resources Specialist for the preparation of an ARMR-format technical report to summarize a CEQA-compliant archaeological survey in Riverside County. Completed online research regarding historic land use of the property, prepared letters of consultation for Native American representatives traditionally affiliated with the project site and prepared the technical report. The results of the survey were negative but based upon the cultural sensitivity of the project area, recommended monitoring be performed during site development.

La Ventana Project (2018 - 2018). As Cultural Resources Specialist, prepared an archaeological monitoring plan for the development of a residential property. Summarized previous studies of the property and an agreement between the developer and the Pechanga Band of Luiseno Indians ensuring monitoring is complete in compliance with their recommendations. Prepared guidance for monitoring, survey, surface collection, the relocation of bedrock milling features on the property into open space, and the installation of fencing. The monitoring plan will be reviewed by Pechanga prior to submission to the developer and the County of Riverside. Work was performed in compliance with CEQA and Section 106 of the NHPA.

Oceanpointe Cultural Resources (2019). Cultural Resources Specialist for a 36-acre survey along the south side of Mission Avenue in Oceanside. The project will entail the development of residences just southwest of Mission San Luis Rey, an area known to be culturally, historically, and archaeologically sensitive. One previously recorded site and three previously recorded isolates were reidentified during survey and their documentation updated. One newly identified site was documented and significance evaluation completed. Prepared the technical report, completed background archival research, and prepared recommendations for additional archaeological study of the property prior to site development.

Seraphina Project (2017 - 2018). Cultural Resources Specialist for a technical report to summarize the results of a 40-acre survey adjacent to Santa Gertrudis Creek in Temecula. Two pipelines associated with the historically significant First San Diego Aqueduct are situated within the project area and will be capped during project construction. Prepared site forms for the pipes and a historic road alignment, which are located within the study area. Prepared a State Historic Preservation Officer (SHPO) consultation letter for the U.S. Army Corps of Engineers. Work was performed in compliance with Section 106 of the NHPA. Work performed for Hillcrest Homes.

Downtown Riverside Metrolink Station Track & Platform Project (2020). Cultural Resource Specialist for preparation of a technical report to summarize the archaeological survey of the proposed location of a new train depot in Riverside. Conducted background research, summarized survey results, and provided recommendations for additional cultural resource studies required for project compliance with NEPA. Work performed for HNTB under contract to the Federal Transit Authority.

Bouquet Canyon Road Project (2018 - 2018). Project Manager for an intensive pedestrian survey of a residential property in Benedict Canyon. Coordinated with Tribal monitors and archaeological crew to complete the survey and prepared technical report, including a historic context for the cities of Los Angeles, Beverly Hills, and West Hollywood. Work performed for 9712 Oak Pass Road, LLC.

Padre Dam Municipal Water District East County Advanced Water Purification Program Year 2 (2018 - 2018). Cultural Resources Specialist for preparation of a technical report to summarize the background research and survey completed for the replacement of water lines from the western portion of Santee to Lakeside, CA. The project bisects numerous historical areas in the region, including historic ranches, prehistoric and historical archaeological sites, and the San Diego Aqueduct Flume. Prepared recommendations for mitigation measures to be implemented once construction begins. Work performed for the City of San Diego.

Rosamond Community Services District Wetland Conceptual Design Services Environmental Surveys and Documentation (2018 - 2019). Cultural Resources Specialist for survey of a 32-acre property proposed for the construction of evaporation ponds along the western boundary of Edwards Air Force Base. Coordinated with field crew and Native American monitors. Two previously recorded sites were subjected to testing and determined to be not eligible for the NRHP or CRHR. Prepared the technical report and technical memos to summarize the work for AB 52 consultation by the Rosamond Community Services District. Work performed for Kennedy Jenks under review by the U.S. Army Corps of Engineers.

San Elijo Joint Powers Authority Roadway and Trail Addendum and Permitting (2018 - 2018). Cultural Resources Specialist for roadway and shared-use trail crossing improvements within Manchester Avenue along the frontage of Manchester Avenue in Cardiff. Prepared background section including historic context information. Work performed for Kimley-Horn.

Sage View Project (2021). Project Manager for archaeological and paleontological monitoring during the construction of a private residential development in Riverside County. Coordinated with the subcontractor paleontologist to have a pre-field report prepared.

Apple Valley Airport Detention Basin IS/MND (2018 - 2018). Assistant Project Manager for coordination with the San Manuel Band of Mission Indians, which provided Native American monitoring services during an archaeological survey of the Apple Valley Airport. Work performed for the Apple Valley Airport Authority.

EMWD Quail Valley III Regional Water Tank Environmental Consulting (2020). Cultural Resource Specialist for the construction of a new water tank and associated piping and facilities in Riverside County. Prepared the technical report to summarize a records search, Native American outreach, archaeological survey, and research into the historic land uses of the project lands. Work performed for Pulte Group, with Eastern Municipal Water District as the CEQA lead agency.

EDUCATION

Bachelor of Arts,
Anthropology,
concentration in
Archaeology, University
of California, San Diego,
2013

REGISTRATIONS/ CERTIFICATIONS

Technical Safety
Institute, HAZWOPER 40
Hour, Hazardous Waste
Operations and
Emergency Response,
Issue No. F183292

MARY VILLALOBOS

Field Director



Ms. Villalobos serves as a field archaeologist on a number of cultural resource projects in southern California, including surveys, testing programs, and monitoring. She has also served as a laboratory assistant for major universities, museums, and archaeological centers. She has nine years of expertise in cultural resource surveying, cataloging site excavation data, and monitoring. Ms. Villalobos' experience includes international work for a key archaeological project in Peru focused on a temple excavation.

Emergency Storage Pond Project. Staff Archaeologist for a cultural resources survey and testing program for an emergency storage pond as part of the City of Escondido's recycled water program. Responsibilities include pedestrian survey of the project area, excavating shovel test pits, identification and recovery of cultural resources and features, laboratory analysis, photographs, and assisted with report preparation. Work performed for City of Escondido.

Vista Grande. Field Archaeologist for a testing program at an archaeological site near Rancho Guajome in the City of Vista, County of San Diego, CA. Responsibilities included excavation of test units, identification of cultural material, and preparation of field notes. Work performed for the City of Vista.

S. Santa Fe Heights Project. Staff Archaeologist for a survey on a 3.51 acre parcel of land located in the City of Vista. Responsibilities include coordination with Native American monitors, pedestrian survey, identification and recording of cultural resources, photographs, and notes.

Olive Avenue 15-Lot TSM/ANX Project. Staff Archaeologist for a cultural resources study for a residential development project near Loma Alta Creek in the City of Vista, CA. Responsibilities include coordination with Native American monitors, intensive pedestrian survey, identification of cultural material and features, photographs, and survey notes. Work performed for City of Vista.

Bridge Preventative Maintenance Project No. 6 Focused Surveys. Staff Archaeologist during a survey for a bridge maintenance project located within Pala reservation. Responsibilities include coordination with Native American monitors, identification and recording cultural resources and features, and photographs. Work performed for County of San Diego. Lead agency City of San Diego.

Sweetwater Vistas Technical Reports. Staff Archaeologist for a cultural resources study for a proposed residential development in the County of San Diego. Responsibilities include intensive pedestrian survey, identification of cultural material and features, photographs, and notes. Work performed for Douglas Wilson Companies. Lead agency County of San Diego.

Oceanpointe Cultural Resources. Staff Archaeologist for a cultural resources study for a 36 acre property in the City of Oceanside, CA. Responsibilities include coordination

with Native American monitors, an intensive pedestrian survey, identification of cultural material and features, photographs, and field notes. Work performed for Hallmark Communities, Inc. Lead agency United States Army Corps of Engineers.

Villa Storia. Staff Archaeologist for a testing program at an important archaeological site near Mission San Luis Rey in the City of Oceanside, County of San Diego, CA. Responsibilities included excavation of test units, identification of cultural material, photographs, and preparation of field notes. Work performed for Integral Partners Funding, LLC.

San Elijo Joint Powers Authority Roadway and Trail Addendum and Permitting. Staff Archaeologist for a cultural resources study for the proposed San Elijo Water Reclamation Facility Upgrades Project in the City of Encinitas. Responsibilities include coordination with Native American monitors, excavation of shovel test pits and half units, identification of cultural material and features, photographs, taking GPS points, notes, laboratory analysis, generating artifact tables, and assist with report. Work performed for Kimley-Horn & Associates, Inc.

The Enclave at Delpy's Corner Project. Staff Archaeologist for a monitoring and data recovery program for a residential development project located in a culturally sensitive area in the City of Vista, CA. Responsibilities include, coordination with construction crew and Native American monitors, field monitoring, daily field notes, excavation of shovel test pits and half units, identification of cultural material and features, taking GPS points, notes for test pits and half units, laboratory analysis and residue testing, generation of artifact tables, photographs, and assist with report. Work performed for CalAtlantic Homes.

Rancho Jamul Ecological Reserve Project. Staff Archaeologist for archaeological testing on a habitat restoration project in a culturally sensitive area located in south San Diego County. Responsibilities include excavation of shovel test pits, identification and recovery of cultural material, record keeping of shovel test pits and artifacts, photographs, and laboratory analysis. Work performed for Wildlands, Inc. Lead agency U.S. Army Corps of Engineers.

Disney Lane. Staff Archaeologist for a cultural resources study for a proposed water pipe installation in the City of Fallbrook, CA. Responsibilities include coordination with Native American monitors, an intensive pedestrian survey, identification of cultural material and features, photographs, and notes. Work performed for Rainbow Municipal Water District.

Hutton Pump Station. Staff Archaeologist for a cultural resources study for the proposed construction of a water pump station in the City of Fallbrook CA. Responsibilities include coordination with Native American monitors, an intensive pedestrian survey, identification of cultural material and features, photographs, and notes. Work performed for Rainbow Municipal Water District.

Turner Pump Station. Staff Archaeologist for a cultural resources study for a proposed pump station in the city of Fallbrook, CA. Responsibilities include coordination with Native American monitors, intensive pedestrian survey, identification of cultural material and features, photographs, and notes. Word performed for Rainbow Municipal Water District.

Telespan Lake Wohlford. Staff Archaeologist for a testing program to determine the northern extent of an important archaeological site near Lake Wohlford in the community of Bear Valley in the County of San Diego, California. Responsibilities included excavation of test units, identification of cultural material, and preparation of field notes. Work performed for DePratti, Inc. Lead agency is County of San Diego.

Kelly Drive and Park Drive Complete Street Improvements. Staff Archaeologist on a cultural resources study for a proposed multi-use trail project adjacent to Agua Hedionda Lagoon in the City of Carlsbad. Responsibilities include excavation of shovel test pits (STPs), identification and recovery of cultural material, completing STP

forms, photographs, notes, laboratory analysis, and assisting with the report. Work performed for GHD, Inc. Lead agency City of Carlsbad.

City of Vista Crescent Drive Sewer Improvements Project. Staff Archaeologist for a cultural resources study for a project to support stabilization of a historic irrigation ditch in order to protect an existing sewer line that runs along it, located in the City of Vista. Responsibilities include coordination with Native American monitors, an intensive pedestrian survey, identification of cultural material and features, photographs, and field notes. Work performed for Gannett Fleming, Inc. Lead agency is City of Vista.

Cottonwood Sand Mine EIR. Staff Archaeologist for a cultural resources study for a proposed sand mine located on Cottonwood Golf Course in southeastern San Diego County. Responsibilities include coordination with Native American monitors, excavation of shovel test pits, field notes, taking GPS points, photographs, laboratory analysis, generating artifact tables, assist with the report. Work performed for Cambra Realty.

Monte Mar Center Project (P16-0276). Staff archaeologist for a cultural resources study on a proposed commercial building project in the City of Vista, CA. Responsibilities include coordination with Native American monitors, intensive pedestrian survey, identification of cultural material and features, photographs, and survey notes. Work performed for J&T Business Management. Lead agency City of Vista.

Green Oak Villas Technical Reports. Staff Archaeologist on a cultural resources study for a proposed residential development project in the City of Vista. Responsibilities include excavation of shovel test pits, identification, recovery, and sorting cultural material, filling in testing forms, photographs, and notes. Work performed for Providence Capital Group, Inc. Lead agency City of Vista.

Newage Carlsbad Luxury Resort Technical Studies. Staff Archaeologist for a cultural resources study for a proposed hotel along the ocean in the City of Carlsbad, CA. Responsibilities include coordination with Native American monitors, an intensive pedestrian survey, identification of cultural material and features, photographs, and notes. Work performed for Kam Sang Company, Inc.

Orlic Residence Project (PDS2018-LDGRMJ-30153). Staff Archaeologist for a cultural resources study on 16 acres, in the City of San Diego, CA, to determine if cultural resources will be impacted by importing 84,000 cubic yards of soil to be placed on the property. Responsibilities include coordination with Native American monitors, an intensive pedestrian survey, identification of cultural material and features, photographs, and field notes. Work performed for Ivan Delgado Orlic. Lead agency is City of San Diego.

Appendix B

Records Search Results
(Confidential, bound separately)

Appendix C

Native American Correspondence
(Confidential, bound separately)

Appendix D

Plates



Plate 1. Project overview showing large planters and paved parking lot; view towards south.



Plate 2. Project overview showing the level of development on property from west of South Bent Avenue, view towards south

G:\PROJECTS\C\CostcoWholesale_03605100004_CostcoFuelFacility\SMIND_Reports\Cultural\Report\Appendices\Appendix D - Plates



Plate 3. Project overview, view behind Costco warehouse, view towards west.



Plate 4. Project overview, view north towards Grand Avenue

G:\PROJECTS\Costco Wholesale_03605100004_CostcoFuelFacility\SWND_Reports\Cultural\Report\Appendices\Appendix D - Plates