



State of California – Natural Resources Agency  
DEPARTMENT OF FISH AND WILDLIFE  
South Coast Region  
3883 Ruffin Road  
San Diego, CA 92123  
[wildlife.ca.gov](http://wildlife.ca.gov)

*GAVIN NEWSOM, Governor*  
*CHARLTON H. BONHAM, Director*



July 25, 2025

Andy Olson  
City of Santa Clarita  
Community Development Department, Planning Division  
23920 Valencia Blvd.  
Suite 302  
Santa Clarita, CA 91355  
[aolson@santaclarita.gov](mailto:aolson@santaclarita.gov)

**SUBJECT: NOTICE OF PREPARATION OF A DRAFT ENVIRONMENTAL IMPACT REPORT FOR THE BELCARO AT SAND CANYON PROJECT, SCH NO. 2025061338, LOS ANGELES COUNTY, CA**

Dear Andy Olson:

The California Department of Fish and Wildlife (CDFW) reviewed the Notice of Preparation (NOP) of a Draft Environmental Impact Report (DEIR) from the City of Santa Clarita (City) for the Belcaro at Sand Canyon Project (Project) pursuant to the California Environmental Quality Act (CEQA) and CEQA Guidelines<sup>1</sup>.

Thank you for the opportunity to provide comments and recommendations regarding those activities involved in the Project that may affect California fish and wildlife. Likewise, CDFW appreciates the opportunity to provide comments regarding those aspects of the Project that CDFW, by law, may be required to carry out or approve through the exercise of its own regulatory authority under the Fish and Game Code.

**CDFW ROLE**

CDFW is California's Trustee Agency for fish and wildlife resources and holds those resources in trust by statute for all the people of the State (Fish & G. Code, §§ 711.7, subd. (a) & 1802; Pub. Resources Code, § 21070; CEQA Guidelines § 15386, subd. (a)). CDFW, in its trustee capacity, has jurisdiction over the conservation, protection, and management of fish, wildlife, native plants, and habitat necessary for biologically sustainable populations of those species (Fish & G. Code, § 1802). Similarly, for purposes of CEQA, CDFW is charged by law to provide, as available, biological expertise during public agency environmental review efforts, focusing specifically on

---

<sup>1</sup> CEQA is codified in the California Public Resources Code in section 21000 et seq. The "CEQA Guidelines" are found in Title 14 of the California Code of Regulations, commencing with section 15000.

Andy Olson  
City of Santa Clarita  
July 25, 2025  
Page 2 of 19

projects and related activities that have the potential to adversely affect fish and wildlife resources.

CDFW may also act as a Responsible Agency under CEQA. (Pub. Resources Code, § 21069; CEQA Guidelines, § 15381). CDFW expects that it may need to exercise regulatory authority as provided by the Fish and Game Code. As proposed, for example, the Project may be subject to CDFW's lake and streambed alteration regulatory authority (Fish & G. Code, § 1600 et seq.). Likewise, to the extent implementation of the Project as proposed may result in "take" as defined by State law<sup>2</sup> of any species protected under the California Endangered Species Act (CESA) (Fish & G. Code, § 2050 et seq.) or the Native Plant Protection Act (NPPA; Fish & G. Code, §1900 et seq.), the Project proponent may seek related take authorization as provided by the Fish and Game Code.

## PROJECT DESCRIPTION SUMMARY

**Proponent:** NUWI-Sand Canyon, LLC

**Objective:** The objective of the Project is to create 341 detached single-family senior housing lots, 1 recreational lot containing a recreation center, 23 private street lots, and 55 open space lots. Primary Project activities include grading, creation of multiple streets, creation of approximately 0.9 miles of trails, and the improvement of the existing Lost Canyon Road as well as the intersection of Lost Canyon Road and Sand Canyon Road.

**Location:** The Project site consists of approximately 208 acres of undeveloped land in the City of Santa Clarita, Los Angeles County. 193.8 acres are attributed to the single-family residential lots (58.7ac), recreation area and clubhouse (3.1ac), private street lots (22.4ac), public street lots (3.0ac), and open space (106.6ac). The remaining 14.2 acres consist of the improvement and extension of Lost Canyon Road to connect the development with a proposed railroad crossing, extension of a newly constructed "J" Street to the south to connect with Robinson Ranch Road, and the construction of approximately 0.9 miles of trails.

**Timeframe:** The Project is expected to be built over a five-year period.

**Biological Setting:** The Project is bordered by the Santa Clara River to the north. Residential development occurs to the west and the south of the Project site. The Robinson Ranch Golf course also borders the Project site to the south. Undeveloped land is to the east of the Project site. Union Pacific Railroad tracks run east to west and bisect the Project site. In addition, Oak Spring Canyon Creek and the Santa Clara River flow through the Project site. Aerial imagery and the California Natural Diversity Database shows vegetation communities of southern riparian scrub and other

---

<sup>2</sup> "Take" is defined in Section 86 of the Fish and Game Code as "hunt, pursue, catch, capture, or kill, or attempt to hunt, pursue, catch, capture, or kill."

Andy Olson  
City of Santa Clarita  
July 25, 2025  
Page 3 of 19

herbaceous vegetation. Species that have the potential to occur and may be impacted by the Project include, but are not limited to: Bell's sparrow (*Artemisiospiza belli belli*; California Watch List (WL), California glossy snake (*Arizona elegans occidentalis*; California Species of Special Concern (SSC)), California legless lizard (*Anniella* spp.; SSC), coastal California gnatcatcher (*Polioptila californica californica*; Endangered Species Act (ESA) Threatened, SSC), coastal whiptail (*Aspidoscelis tigris stejnegeri*; SSC), Crotch's bumble bee (*Bombus crotchii*; CESA Candidate), mountain lion (*Puma concolor*; California Endangered Species Act (CESA) Candidate Species), Santa Ana sucker (*Catostomus santaanae*, ESA Threatened, SSC) slender mariposa lily (*Calochortus clavatus* var. *gracilis*; California Rare Plant Rank (CRPR) 1B.2), slender-horned spineflower (*Dodecahema leptoceras*; ESA Endangered, CESA Endangered, CRPR 1B.1), south coast garter snake (*Thamnophis sirtalis*; SSC), southern California rufous-crowned sparrow (*Aimophila ruficeps canescens*, WL), two-striped gartersnake (*Thamnophis hammondi*, SSC), unarmored threespine stickleback (*Gasterosteus aculeatus williamsoni*; ESA Endangered, CESA Fully Protected), western spadefoot (*Spea hammondi*, ESA Proposed Threatened, SSC).

## COMMENTS AND RECOMMENDATIONS

CDFW offers the comments and recommendations below to assist the City in adequately identifying and/or mitigating the Project's significant, or potentially significant, direct and indirect impacts on fish and wildlife (biological) resources.

### Specific Comments

- 1) Wildlife Movement. Given that the Project involves the development of approximately 102 acres of the 208 acres of undeveloped land within the Project site, the resulting development may contribute to habitat fragmentation and impact local wildlife movement. CDFW recommends that the City analyze whether the Project would impact local wildlife movement. Impacts that should be analyzed include, but are not limited to, habitat loss and fragmentation, narrowing of wildlife corridors, and introduction of barriers to wildlife movement. Technical details such as data, maps, diagrams, and similar, relevant information should be provided to permit full assessment of significant environmental impacts by reviewing agencies and members of the public (CEQA Guidelines, § 15147). If avoidance of corridor encroachment is not feasible, the DEIR should provide measures to mitigate the Project's impacts to wildlife movement. CDFW is available for scoping of possible mitigation pathways prior to the circulation of the DEIR.
- 2) Recreational Trails. The Project proposes the development of trails in multiple locations within the Project site. Incorporating trails would increase human foot traffic resulting in increased noise levels, trash, and pet waste; the introduction of unnatural food sources via trash and trash receptacles; and other indirect impacts. The DEIR should specify the types of recreational activities that would occur on the trails (e.g., walking, biking, horse riding). The DEIR should provide a discussion pertaining to the direct and indirect impacts the trails would have on biological

Andy Olson  
City of Santa Clarita  
July 25, 2025  
Page 4 of 19

resources and special-status species. The location of the trail system, description of trail materials (e.g., paved asphalt, gravel, etc.), and the level of access to the trails should be discussed in the DEIR. The DEIR should also contain a mitigation measure that calls for the creation of a Recreational Trails Plan (Plan). The Plan should include, but is not limited to, details about installation of appropriate signage and trash receptacles, allowable and prohibited trail uses, and best management practices.

Additionally, fencing associated with trail creation and maintenance could obstruct wildlife movement and result in wildlife injury or mortality due to impalement and/or entanglement (e.g. chain-link fencing). If the Project includes temporary and/or permanent fencing, prior to the preparation of the DEIR, CDFW recommends the City provide wildlife-friendly fencing designs. Fencing designs should be disclosed and evaluated in the DEIR for potential impacts of biological resources, specifically wildlife movement. CDFW supports the use of wildlife-friendly fencing. Wildlife-friendly fencing should be used and strategically placed in areas of high biological resource value to protect biological resources, habitat, and wildlife movement. CDFW recommends [A Landowner's Guide to Wildlife Friendly Fences for information about wildlife-friendly fences](#) (MFWP 2012).

- 3) Mountain Lion. According to the California Wildlife Habitat Relationships (CWHR) Mountain Lion Predicted Habitat dataset<sup>3</sup>, the Project site contains habitat with medium and high suitability to support mountain lion. Mountain lions have also been deemed as a keystone species that support plant recruitment in riparian areas, stabilize stream banks, and sustain healthy habitats for aquatic and terrestrial species (CBD 2019). The proposed Project may impact mountain lion through temporary and permanent habitat modification, grading, and increased human presence. The DEIR should analyze and discuss the Project's temporary, permanent, and cumulative impact on mountain lion throughout the Project. Impacts on mountain lion behavior, reproductive viability, and overall survival success should also be analyzed and discussed in the DEIR.

CDFW considers adverse impacts to a species protected by CESA to be significant without mitigation under CEQA. As to CESA, take of any endangered, threatened, candidate species, or CESA-listed plant species that results from the Project is prohibited, except as authorized by State law (Fish & G. Code §§ 2080, 2085; Cal. Code Regs., tit. 14, §786.9). The mountain lion is a specially protected mammal in the State (Fish and G. Code, § 4800). In addition, on April 21, 2020, the California Fish and Game Commission accepted a petition to list the Southern California/Central Coast Evolutionary Significant Unit of mountain lion as threatened under CESA (CDFW 2020). As a CESA candidate species, the mountain lion in southern California is granted full protection as a threatened species under CESA.

---

<sup>3</sup> <https://map.dfg.ca.gov/metadata/ds2616.html?5.108.39>

Andy Olson  
City of Santa Clarita  
July 25, 2025  
Page 5 of 19

- 4) Unarmored Threespine Stickleback and Santa Ana Sucker. According to CNDDDB, unarmored threespine stickleback (UTS) and Santa Ana sucker have been observed upstream of the Project site within three miles. Santa Ana sucker is an ESA-listed Threatened species and SSC. CDFW considers impacts to ESA-listed and SSC a significant direct and cumulative adverse effect without implementing appropriate avoidance and/or mitigation measures. UTS is an ESA-endangered and CESA-listed fully protected species. Fully protected species are animals that are rare or faced with possible extinction as identified in Fish and Game Code §§ 3511, 4700, 5050, 5515. Pursuant to Fish and Game Code, fully protected species may not be taken or possessed at any time, and no licenses or permits may be issued for their take, except for collecting these species for necessary scientific research, relocation of bird species for the protection of livestock, or if they are a covered species whose conservation and management is provided for in a Natural Community Conservation Plan. CDFW cannot authorize take for UTS. CDFW recommends the Project proponent completely avoid impacts to UTS during the Project's construction, operational, future maintenance, and other ongoing activities. If impacts to UTS cannot be completely avoided, the Project proponent should consult with CDFW to discuss potential avoidance measures and a path moving forward.
- 5) Crotch's Bumble Bee. Crotch's bumble bee is a generalist bee species that can utilize a variety of habitats included in the Project area, such as open grasslands, shrublands, and semi-urban settings for nesting and foraging opportunities. According to CNDDDB, Crotch's bumble bee has been observed within two miles of the Project site. Focused surveys should be conducted to determine Crotch's bumble presence or absence within the Project site. Without a focused survey, Project activities could result in permanent loss of floral resources and nesting sites, nest abandonment, and/or direct injury or mortality of Crotch's bumble bee.

In preparation of the DEIR, CDFW recommends the Project proponent retain a qualified biologist with the appropriate handling permits to conduct focused surveys. Focused surveys should follow CDFW's [Survey Considerations for California Endangered Species Act Candidate Bumble Bee Species](#) (CDFW 2023). Focused surveys should also be conducted throughout the suitable habitat within the Project area during the appropriate flying season to ensure no missed detection of Crotch's bumble bee occurs. Findings from the focused survey should be included in the DEIR for complete public disclosure and review.

The DEIR should also provide a discussion of habitat suitability for Crotch's bumble bee. Additionally, the DEIR should provide a discussion of the Project's potential direct and indirect impacts on Crotch's bumble bee. If the Project would impact Crotch's bumble bee, the DEIR should provide measures to minimize, and/or mitigate potential impacts to Crotch's bumble bee as well as habitat supporting the species. Coordination with CDFW is recommended and may include obtaining appropriate take authorization under CESA.

Andy Olson  
City of Santa Clarita  
July 25, 2025  
Page 6 of 19

- 6) Slender-horned Spineflower. According to CNDDDB, slender-horned spineflower has been observed within a two-mile radius of the Project site. Additionally, the Project site may provide suitable habitat for this species. CDFW considers adverse impacts to a species protected by CESA to be significant. Take of any endangered, threatened, candidate species, or NPPA-listed plant species that results from the Project is prohibited, except as authorized by state law (Fish & G. Code §§ 2080, 2085; Cal. Code Regs., tit. 14, §786.9). Consequently, if the Project or any Project-related activity will result in take of a species designated as endangered or threatened, or a candidate for listing under CESA, CDFW recommends that the Project proponent seek appropriate take authorization under CESA prior to implementing the Project. Appropriate authorization from CDFW may include an Incidental Take Permit (ITP) or a consistency determination in certain circumstances, among other options (Fish & G. Code, §§ 2080.1, 2081, subds. (b) and (c)). Early consultation is encouraged, as significant modification to a Project and mitigation measures may be required to obtain a CESA Permit.

To ensure CDFW will be able to use the City's CEQA document for the issuance of an ITP, the DEIR should address all Project impacts to CESA-listed species and specify a mitigation, monitoring, and reporting program that will meet the requirements of an ITP.

- 7) Coastal California Gnatcatcher. Upon review of CNDDNB, coastal California gnatcatcher (CAGN) has been observed within two miles of the Project site. Direct impacts could result from Project construction and activities (e.g., equipment staging, mobilization, and grading); ground disturbance; vegetation clearing; and trampling or crushing from construction equipment, vehicles, and foot traffic. Project activities may result in additional indirect impacts due to increased noise disturbances, dust, and vibrations caused by heavy equipment. CDFW considers impacts to ESA-listed and SSC a significant direct and cumulative adverse effect without implementing appropriate avoidance and/or mitigation measures. The loss of occupied and suitable habitat could yield a loss of foraging potential, nesting sites, roosting sites, or refugia and would constitute a significant impact absent appropriate mitigation. In addition, nests of all native bird species are protected under State laws and regulations, including Fish and Game Code, sections 3503 and 3503.5.

CDFW recommends that focused surveys for CAGN be conducted in preparation for the DEIR. The DEIR should also discuss the Project's potential impacts to CAGN and any supporting habitat. CDFW also recommends the City incorporate mitigation measures in the DEIR that avoid, minimize, and mitigate potential impacts. Surveys should adhere to appropriate survey protocols as described in the United States Fish and Wildlife Service (USFWS) [Coastal California Gnatcatcher \(Poliophtila californica californica\) Presence/Absence Survey Protocol](#) (USFWS 2019).

Andy Olson  
City of Santa Clarita  
July 25, 2025  
Page 7 of 19

- 8) Species of Special Concern. A review of CNDDDB indicates observations of California legless lizard, California glossy snake, coastal whiptail, south coast garter snake, two-striped garter snake and western spadefoot within a two-mile radius of the Project site. The Project area provides suitable habitat for a variety of SSC. Project activities may result in death or injury of adults, juveniles, eggs, or hatchlings. Moreover, the Project may eliminate foraging, breeding, or nesting habitat and refugia for these species. In preparation of the DEIR, CDFW recommends that the City thoroughly discuss potential impacts and include mitigation measures that provide compensatory mitigation for Project impacts on SSC.
- 9) Rare Plants. According to CNDDDB, slender-mariposa lily have been observed within a two-mile radius of the Project site. Potential Project activities, such as grading, construction, and landscaping may have impacts to these plant species. Impacts to special status plant species should be analyzed in the DEIR as they meet the definition of endangered, rare, or threatened species (CEQA Guidelines, § 15380). CDFW recommends the City provide full disclosure of the Project's impact on rare plants and their associated seedbank. CDFW also recommends the City incorporate mitigation measures in the DEIR that avoid, minimize, and mitigate potential impacts on rare plants and supporting habitat. The City should also retain a qualified biologist with the appropriate handling permits to conduct a rare plant survey throughout the Project site to confirm presence/absence of rare plants. Surveys should adhere to CDFW's [Protocols for Surveying and Evaluating Impacts to Special Status Native Plant Populations and Sensitive Natural Communities](#) (CDFW 2018). Findings of the rare plant survey should be disclosed in the DEIR.
- 10) Lake and Streambed Alteration Agreement. According to the NOP, the Santa Clara River and Oak Spring Canyon Creek run through the Project footprint, including areas of the Project that will be under construction. CDFW recommends the Project Proponent notify for a Lake and Streambed Alteration (LSA) Notification prior to the start of Project activities. The DEIR should discuss the Project's impact on streams, include a stream delineation, and evaluate potential impacts. The DEIR should discuss any impact associated with grading and construction.

CDFW has regulatory authority over activities in streams that will divert or obstruct the natural flow, or change the bed, channel, or bank (which may include associated riparian resources) of any river, stream, or lake or use material from a river, stream, or lake. For any such activities, the Project Proponent (or "entity") must provide written notification to CDFW pursuant to section 1600 et seq. of the Fish and Game Code. Based on this notification and other information, CDFW determines whether a Lake and Streambed Alteration Agreement (LSAA) with the applicant is required prior to conducting the proposed activities. CDFW's issuance of a LSAA for a project that is subject to CEQA will require CEQA compliance actions by CDFW as a Responsible Agency. CDFW recommends that the Project Proponent assess whether notification is appropriate. A Notification package for a

Andy Olson  
City of Santa Clarita  
July 25, 2025  
Page 8 of 19

LSAA may be obtained by accessing CDFW's Lake and Streambed Alteration Program website<sup>4</sup>.

## General Comments

- 1) Disclosure. The DEIR should provide an adequate, complete, and detailed disclosure about the effects which a proposed project is likely to have on the environment (Pub. Resources Code, § 20161; CEQA Guidelines, § 15151). Such disclosure is necessary so CDFW may provide comments on the adequacy of proposed avoidance, minimization, or mitigation measures, as well as assess the significance of the specific impact relative to plant and wildlife species impacted (e.g., current range, distribution, population trends, and connectivity).
- 2) Project Description and Alternatives. To enable adequate review and comment on the proposed Project from the standpoint of the protection of fish, wildlife, and plants, CDFW recommends the following information be included in the DEIR.
  - a. A complete discussion of the purpose and need for, and description of the proposed Project.
  - b. A range of feasible alternatives to the Project location to avoid or otherwise minimize direct and indirect impacts on sensitive biological resources and wildlife movement areas. CDFW recommends the City select Project designs and alternatives that would avoid or otherwise minimize direct and indirect impacts on biological resources. CDFW also recommends the City consider establishing appropriate setbacks from sensitive and special status biological resources. Setbacks should not be impacted by ground disturbance or hydrological changes from any future Project-related construction, activities, maintenance, and development. As a general rule, CDFW recommends reducing or clustering a development footprint to retain unobstructed spaces for vegetation and wildlife and provide connections for wildlife between properties and minimize obstacles to open space.
  - c. Project alternatives should be thoroughly evaluated, even if an alternative would impede, to some degree, the attainment of the Project objectives or would be more costly (CEQA Guidelines, § 15126.6). The DEIR shall include sufficient information about each alternative to allow meaningful evaluation, public participation, analysis, and comparison with the proposed Project (CEQA Guidelines, § 15126.6).
  - d. Where the Project may impact aquatic and riparian resources, CDFW recommends the City select Project designs and alternatives that would fully avoid impacts to such resources. CDFW also recommends an alternative that would not impede, alter, or otherwise modify existing surface flow, watercourse

---

<sup>4</sup> <http://www.wildlife.ca.gov/Conservation/LSA>

Andy Olson  
City of Santa Clarita  
July 25, 2025  
Page 9 of 19

and meander, and water-dependent ecosystems and natural communities. Project designs should consider elevated crossings to avoid channelizing or narrowing of watercourses. Any modifications to a river, creek, or stream may cause or magnify upstream bank erosion, channel incision, and drop in water level, which may cause the watercourse to alter its course of flow.

- 3) Biological Baseline Assessment. An adequate biological resources assessment should provide a complete assessment and impact analysis of the flora and fauna within and adjacent to the Project site and where the Project may result in ground disturbance. The assessment and analysis should place emphasis on identifying endangered, threatened, rare, and sensitive species; regionally and locally unique species; and sensitive habitats. An impact analysis will aid in determining the Project's potential direct, indirect, and cumulative biological impacts, as well as specific mitigation or avoidance measures necessary to offset those impacts. CDFW also considers impacts to Species of Special Concern (SSC) a significant direct and cumulative adverse effect without implementing appropriate avoidance and/or mitigation measures. The DEIR should include the following information.
  - a. Information on the regional setting that is critical to an assessment of environmental impacts, with special emphasis on resources that are rare or unique to the region (CEQA Guidelines, § 15125(c)). The DEIR should include measures to fully avoid and otherwise protect Sensitive Natural Communities. CDFW considers Sensitive Natural Communities as threatened habitats having both regional and local significance. Natural communities, alliances, and associations with a State-wide rarity ranking of S1, S2, and S3 should be considered sensitive and declining at the local and regional level. These ranks can be obtained by visiting the [Vegetation Classification and Mapping Program - Natural Communities webpage](#)<sup>5</sup>.
  - b. A thorough, recent, floristic-based assessment of special status plants and natural communities following CDFW's [Protocols for Surveying and Evaluating Impacts to Special Status Native Plant Populations and Sensitive Natural Communities](#)<sup>6</sup>. Botanical field surveys should be comprehensive over the entire Project site, including areas that will be directly or indirectly impacted by the Project. Adjoining properties should also be surveyed where direct or indirect Project effects could occur, such as those from fuel modification, herbicide application, invasive species, and altered hydrology. Botanical field surveys should be conducted in the field at the times of year when plants will be both evident and identifiable. Usually, this is during flowering or fruiting. Botanical field survey visits should be spaced throughout the growing season to accurately determine what plants exist in the Project site. This usually involves multiple visits to the Project site (e.g., in early, mid, and late season) to capture the

---

<sup>5</sup> <https://wildlife.ca.gov/Data/VegCAMP/Natural-Communities>

<sup>6</sup> <https://nrm.dfg.ca.gov/FileHandler.ashx?DocumentID=18959&inline>

Andy Olson  
City of Santa Clarita  
July 25, 2025  
Page 10 of 19

floristic diversity at a level necessary to determine if special status plants are present.

- c. Floristic alliance- and/or association-based mapping and vegetation impact assessments conducted in the Project site and within adjacent areas. The [Manual of California Vegetation](#)<sup>7</sup>, second edition, (Sawyer, Keeler-Wolf, & Evens, 2009) should also be used to inform this mapping and assessment. Adjoining habitat areas should be included in this assessment where the Project's construction and activities could lead to direct or indirect impacts offsite.
- d. A complete and recent assessment of the biological resources associated with each habitat type in the Project site and within adjacent areas. A full literature review includes but is not limited to CDFW's [California Natural Diversity Database](#)<sup>8</sup> (CNDDDB). The CNDDDB should be accessed to obtain current information on any previously reported sensitive species and habitat. An assessment should include a minimum nine-quadrangle search of the CNDDDB to determine a list of species potentially present in the Project site. A nine-quadrangle search should be provided in the Project's CEQA document for adequate disclosure of the Project's potential impact on biological resources.
- e. A complete, recent, assessment of endangered, rare, or threatened species and other sensitive species within the Project site and adjacent areas, including SSC and California Fully Protected Species (Fish & G. Code, §§ 3511, 4700, 5050, and 5515). Species to be addressed should include all those which meet the CEQA definition of endangered, rare, or threatened species (CEQA Guidelines, § 15380). Seasonal variations in use of the Project site should also be addressed such as wintering, roosting, nesting, and foraging habitat. Focused species-specific surveys, conducted at the appropriate time of year and time of day when the sensitive species are active or otherwise identifiable, may be required if suitable habitat is present. See [CDFW's Survey and Monitoring Protocols and Guidelines](#)<sup>9</sup> for established survey protocol. Acceptable species-specific survey procedures may be developed in consultation with CDFW and U.S. Fish and Wildlife Service.
- f. A recent wildlife and rare plant survey. A lack of records in the CNDDDB does not mean that rare, threatened, or endangered plants and wildlife do not occur. Field verification for the presence or absence of sensitive species is necessary to provide a complete biological assessment for adequate CEQA review (CEQA Guidelines, § 15003(i)). CDFW generally considers biological field assessments for wildlife to be valid for a one-year period, and assessments for rare plants may be considered valid for a period of up to three years. Some aspects of the proposed Project may warrant periodic updated surveys for certain sensitive

---

<sup>7</sup> <https://vegetation.cnps.org/>

<sup>8</sup> <https://wildlife.ca.gov/Data/CNDDDB>

<sup>9</sup> <https://wildlife.ca.gov/conservation/survey-protocols>

Andy Olson  
City of Santa Clarita  
July 25, 2025  
Page 11 of 19

taxa, particularly if Project implementation build out could occur over a protracted time frame or in phases.

- 4) Direct and Indirect Impacts on Biological Resources. The DEIR should provide a thorough discussion of direct and indirect impacts expected to affect biological resources with specific measures to offset such impacts. The DEIR should address the following.
  - a. A discussion of potential impacts from lighting, noise, temporary and permanent human activity, and exotic species, and identification of any mitigation measures. A discussion regarding Project-related indirect impacts on biological resources. These include resources in nearby public lands, open space, adjacent natural habitats, riparian ecosystems, and any designated and/or proposed or existing reserve lands (e.g., preserve lands associated with a Natural Community Conservation Plan (Fish & G. Code, § 2800 et. seq.)).
  - b. A discussion of both the short-term and long-term effects of the Project on species population distribution and concentration, as well as alterations of the ecosystem supporting those species impacted (CEQA Guidelines, § 15126.2(a)).
  - c. Impacts on, and maintenance of, wildlife corridor/movement areas, including access to undisturbed habitats in areas adjacent to the Project, should be fully analyzed and discussed in the DEIR.
  - d. A discussion of post-Project fate of drainage patterns, surface flows, and soil erosion and/or sedimentation in streams and water bodies. The discussion should also address the potential water extraction activities and the potential resulting impacts on habitat supported by the groundwater. Measures to mitigate such impacts should be included.
  - e. An analysis of impacts from proposed changes to land use designations and zoning, and existing land use designation and zoning located nearby or adjacent to natural areas that may inadvertently contribute to wildlife-human interactions. A discussion of possible conflicts and mitigation measures to reduce these conflicts should be included in the DEIR.
- 5) Cumulative Impact. Cumulative impacts on biological resources can result from collectively significant projects which are individually insignificant. The Project, when considered collectively with prior, concurrent, and probable future projects, may have a significant cumulative effect on biological resources. The Project may have the potential to substantially reduce the number or restrict the range of endangered, rare, or threatened species. Species that may be impacted by the Project include, but are not limited to, the biological resources described in this letter.

Andy Olson  
City of Santa Clarita  
July 25, 2025  
Page 12 of 19

Accordingly, CDFW recommends the DEIR evaluate the Project's potential cumulative impacts on biological resources. The Project may have a "significant effect on the environment" if the possible effects of the Project are individually limited but cumulatively considerable. "Cumulatively considerable" means that the incremental effects of an individual project are considerable when viewed in connection with the effects of past projects, the effects of other current projects, and the effects of probable future projects (Pub. Resources Code, § 21083(b)). The City's conclusions regarding the significance of the Project's cumulative impact should be justified and supported by evidence to make those conclusions. Specifically, if the City concludes that the Project would not result in cumulative impacts on biological resources, the City, "shall identify facts and analysis supporting the Lead Agency's conclusion that the cumulative impact is less than significant" (CEQA Guidelines section § 15130(a)(2)).

- 6) Nesting Birds. To avoid impacts to nesting birds, CDFW recommends that clearing of vegetation occur outside of the peak avian breeding season, which general runs from February 1 through September 1 (as early as January 1 for some raptors). If Project construction is necessary during the bird breeding season, a qualified biologist with experience in conducting breeding bird surveys should conduct a nesting bird survey within three days prior to work in the area. If an active nest is identified, a buffer shall be established between the construction activities and the nest so that nesting activities are not interrupted. For the given Project site, CDFW generally recommends a 100-foot buffer from common avian species, 300 feet for listed or highly sensitive, and 500 feet for raptors. The buffer should be delineated by temporary fencing and remain in effect as long as construction is occurring. No Project construction shall occur within the fenced nest zone until the young have fledged, are no longer being fed by the parents, have left the nest, and will no longer be impacted by the Project. Reductions in the nest buffer distance may be appropriate depending on the avian species involved, ambient levels of human activity, screening vegetation, or possibly other factors.
- 7) Mitigation Measures. Public agencies have a duty under CEQA to prevent significant, avoidable damage to the environment by requiring changes in a project through the use of feasible alternatives or mitigation measures (CEQA Guidelines, §§ 15002(a)(3), 15021). Pursuant to CEQA Guidelines section 15126.4, an environmental document shall describe feasible measures which could mitigate impacts below a significant level under CEQA. Mitigation measures must be feasible, effective, implementable, and fully enforceable/imposed by the lead agency through permit conditions, agreements, or other legally binding instruments (Pub. Resources Code, § 21081.6(b); CEQA Guidelines, § 15126.4).
  - a. The DEIR should provide mitigation measures that are specific and detailed (i.e., responsible party, timing, specific actions, location) in order for a mitigation measure to be fully enforceable and implemented successfully via a mitigation monitoring and/or reporting program (Pub. Resources Code, § 21081.6; CEQA Guidelines, § 15097).

Andy Olson  
City of Santa Clarita  
July 25, 2025  
Page 13 of 19

- b. If a proposed mitigation measure would cause one or more significant effects, in addition to impacts caused by the proposed Project, the DEIR should include a discussion of the effects of proposed mitigation measures (CEQA Guidelines, § 15126.4(a)(1)). In that regard, the DEIR should provide an adequate, complete, and detailed disclosure about the Project's proposed mitigation measure(s). Adequate disclosure is necessary so CDFW may assess the potential impacts of proposed mitigation measures.
- 8) Compensatory Mitigation. The DEIR should include compensatory mitigation measures for the Project's significant impacts (direct and/or through habitat modification) to sensitive and special status plants, animals, and habitats. Mitigation measures should emphasize avoidance and minimization of Project-related impacts. For unavoidable impacts, on-site habitat restoration or enhancement should be discussed in detail. If on-site mitigation is not feasible or would not be biologically viable and therefore inadequate to mitigate the loss of biological functions and values, off-site mitigation through habitat creation and/or acquisition and preservation in perpetuity should be addressed. Areas proposed as mitigation lands should be protected in perpetuity with a conservation easement and financial assurance and dedicated to a qualified entity for long-term management and monitoring.
- 9) Long-term Management of Mitigation Lands. For proposed mitigation lands, the DEIR should include measures to protect the targeted habitat values in perpetuity. The mitigation should offset Project-induced qualitative and quantitative losses of biological resources. Issues that should be addressed include (but are not limited to) restrictions on access, proposed land dedications, monitoring and management programs, control of illegal dumping, water pollution, and increased human intrusion. An appropriate endowment should be set aside to provide for long-term management of mitigation lands.
- 10) Translocation/Salvage of Plants and Animal Species. Translocation and transplantation is the process of removing plants and wildlife from one location and permanently moving it to a new location. CDFW generally does not support the use of translocation or transplantation as the primary mitigation strategy for unavoidable impacts to endangered, rare, or threatened plants and animals. These efforts are experimental, and the outcome is unreliable. CDFW has found that permanent preservation and management of habitat capable of supporting these species is often a more effective long-term strategy for conserving plants and animals and their habitats.
- 11) Scientific Collecting Permit. A Scientific Collecting Permit would be necessary if there is a plan to capture and relocate wildlife. Pursuant to the California Code of Regulations, title 14, section 650, qualified biologist(s) must obtain appropriate handling permits to capture, temporarily possess, and relocated wildlife to avoid harm or mortality in connection with Project-related activities. CDFW has the authority to issue permits for the take or possession of wildlife, including mammals;

Andy Olson  
City of Santa Clarita  
July 25, 2025  
Page 14 of 19

birds, nests, and eggs; reptiles, amphibians, fish, plants; and invertebrates (Fish & G. Code, §§ 1002, 1002.5, 1003). A Scientific Collecting Permit is required to monitor project impacts on wildlife resources, as required by environmental documents, permits, or other legal authorizations; and, to capture, temporarily possess, and relocate wildlife to avoid harm or mortality in connection with otherwise lawful activities (Cal. Code Regs., tit. 14, § 650). For more information, please see CDFW's [Scientific Collecting Permit webpage](#)<sup>10</sup>.

- 12) Wetland Resources. CDFW, as described in Fish and Game Code section 703(a), is guided by the [Fish and Game Commission's \(Commission\) policies](#)<sup>11</sup>. Through its Wetlands Resources policy, the Commission "...seek[s] to provide for the protection, preservation, restoration, enhancement, and expansion of wetland habitat in California" (California Fish and Game Commission, 2005). It is the policy of the Commission to strongly discourage development in or conversion of wetlands. It opposes, consistent with its legal authority, any development or conversion that would result in a reduction of wetland acreage or wetland habitat values. To that end, the Commission opposes wetland development proposals unless, at a minimum, project mitigation assures there will be 'no net loss' of either wetland habitat values or acreage. The Commission strongly prefers mitigation which would achieve expansion of wetland acreage and enhancement of wetland habitat values."
- a. The Wetlands Resources policy provides a framework for maintaining wetland resources and establishes mitigation guidance. CDFW encourages avoidance of wetland resources as a primary mitigation measure and discourages the development or type conversion of wetlands to uplands. CDFW encourages activities that would avoid the reduction of wetland acreage, function, or habitat values. Once avoidance and minimization measures have been exhausted, a project should include mitigation measures to assure a "no net loss" of either wetland habitat values, or acreage, for unavoidable impacts to wetland resources. Conversions include, but are not limited to, conversion to subsurface drains, placement of fill or building of structures within the wetland, and channelization or removal of materials from the streambed. All wetlands and watercourses, whether ephemeral, intermittent, or perennial, should be retained and provided with substantial setbacks, which preserve the riparian and aquatic values and functions benefiting local and transient wildlife populations. CDFW recommends mitigation measures to compensate for unavoidable impacts be included in the DEIR and these measures should compensate for the loss of function and value.
- b. The Fish and Game Commission's Water policy guides CDFW on the quantity and quality of the waters of this State that should be apportioned and maintained respectively so as to produce and sustain maximum numbers of fish and wildlife;

---

<sup>10</sup> <https://wildlife.ca.gov/Licensing/Scientific-Collecting>

<sup>11</sup> <https://fgc.ca.gov/About/Policies/Miscellaneous>

Andy Olson  
City of Santa Clarita  
July 25, 2025  
Page 15 of 19

to provide maximum protection and enhancement of fish and wildlife and their habitat; encourage and support programs to maintain or restore a high quality of the waters of this State; prevent the degradation thereof caused by pollution and contamination; and, endeavor to keep as much water as possible open and accessible to the public for the use and enjoyment of fish and wildlife. CDFW recommends avoidance of water practices and structures that use excessive amounts of water, and minimization of impacts that negatively affect water quality, to the extent feasible (Fish & G. Code, § 5650).

- 13) Use of Native Plants and Trees. CDFW recommends the City require the Project Applicant to provide a native plant palette for the Project. The Project's landscaping plan should be disclosed and evaluated in the DEIR for potential impacts on biological resources such as natural communities adjacent to the Project site (e.g., introducing non-native, invasive species). CDFW supports the use of native plants for the Project especially considering the Project's location adjacent to protected open space and natural areas. CDFW strongly recommends avoiding non-native, invasive species for landscaping and restoration, particularly any species listed as 'Moderate' or 'High' by the [California Invasive Plant Council](#)<sup>12</sup> CDFW supports the use of native species found in naturally occurring plant communities within or adjacent to the Project site. In addition, CDFW supports planting species of trees, such as oaks (*Quercus* genus), and understory vegetation (e.g., ground cover, subshrubs, and shrubs) that create habitat and provide a food source for birds. CDFW recommends retaining any standing, dead, or dying tree (snags) where possible because snags provide perching and nesting habitat for birds and raptors. Finally, CDFW supports planting species of vegetation with high insect and pollinator value.

## ENVIRONMENTAL DATA

CEQA requires that information developed in environmental impact reports and negative declarations be incorporated into a database which may be used to make subsequent or supplemental environmental determinations. (Pub. Resources Code, § 21003, subd. (e).) Accordingly, please report any special status species and natural communities detected during Project surveys to the California Natural Diversity Database (CNDDDB). The [CNDDDB website](#)<sup>13</sup> provides direction regarding the types of information that should be reported and allows on-line submittal of field survey forms.

In addition, information on special status native plant populations and sensitive natural communities, should be submitted to CDFW's Vegetation Classification and Mapping Program using the [Combined Rapid Assessment and Relevé Form](#)<sup>14</sup>.

---

<sup>12</sup> <https://www.cal-ipc.org/plants/inventory/>

<sup>13</sup> <https://wildlife.ca.gov/Data/CNDDDB>

<sup>14</sup> <https://wildlife.ca.gov/Data/VegCAMP/Natural-Communities/Submit>

Andy Olson  
City of Santa Clarita  
July 25, 2025  
Page 16 of 19

The City should ensure data collected for the preparation of the DEIR is properly submitted.

## FILING FEES

The Project, as proposed, would have an impact on fish and/or wildlife, and assessment of filing fees is necessary. Fees are payable upon filing of the Notice of Determination by the Lead Agency and serve to help defray the cost of environmental review by CDFW. Payment of the fee is required in order for the underlying project approval to be operative, vested, and final. (Cal. Code Regs, tit. 14, § 753.5; Fish & G. Code, § 711.4; Pub. Resources Code, § 21089.)

## CONCLUSION

CDFW appreciates the opportunity to comment on the NOP to assist the City in identifying and mitigating Project impacts on biological resources.

Questions regarding this letter or further coordination should be directed to Riley Scott<sup>15</sup>, Environmental Scientist.

Sincerely,

  
Victoria Tang  
Environmental Program Manager  
South Coast Region

ec: California Department of Fish and Wildlife  
Victoria Tang, Environmental Program Manager  
Steve Gibson, Senior Environmental Scientist (Supervisory)  
Riley Scott, Environmental Scientist  
Frida Diaz-Barriga, Staff Services Analyst

Office of Planning and Research  
[State.Clearinghouse@opr.ca.gov](mailto:State.Clearinghouse@opr.ca.gov)

---

<sup>15</sup> Phone: (858) 861-8020; Email: [Riley.Scott@wildlife.ca.gov](mailto:Riley.Scott@wildlife.ca.gov)

Andy Olson  
City of Santa Clarita  
July 25, 2025  
Page 17 of 19

## REFERENCES

- California Department of Fish and Game. (2011). *CNDDDB Data Use Guidelines*. Retrieved from <https://nrm.dfg.ca.gov/FileHandler.ashx?DocumentID=27285&inline>
- [CDFW] California Department of Fish and Wildlife. (2020). *Notice of Findings - Mountain Lion ESU declared a candidate species*. Available from: <https://nrm.dfg.ca.gov/FileHandler.ashx?DocumentID=178623&inline>
- California Department of Fish and Wildlife. (2021). *Protocols for Surveying and Evaluating Impacts to Special Status Native Plant Populations and Sensitive Natural Communities*. <https://nrm.dfg.ca.gov/FileHandler.ashx?DocumentID=18959&inline>
- California Department of Fish and Wildlife. (2023). *Survey Considerations for California Endangered Species Act (CESA) Candidate Bumble Bee Species*. Available from: <https://nrm.dfg.ca.gov/FileHandler.ashx?DocumentID=213150&inline>
- California Fish and Game Commission. (2005). *Miscellaneous Policies*. Retrieved from <https://fgc.ca.gov/About/Policies/Miscellaneous>
- [CBD] Center for Biological Diversity. 2019. *A Petition to List the Southern California/Central Coast Evolutionarily Significant Unit (ESU) of Mountain Lions*. Available from: <https://nrm.dfg.ca.gov/FileHandler.ashx?DocumentID=171208&inline>
- [MFWP] Montana Fish, Wildlife and Parks. (2012). *A Landowner's Guide to Wildlife Friendly Fences: How to Build Fence with Wildlife in Mind*. Second Edition Revised and Updated. Available from: <https://nrm.dfg.ca.gov/FileHandler.ashx?DocumentID=134713&inline>
- Sawyer, J. O., Keeler-Wolf, T., & Evens, J. M. (2009). *A Manual of California Vegetation* (Second ed.). Sacramento, CA: California Native Plant Society. Retrieved from <https://vegetation.cnps.org/>
- [USFWS] United States Fish and Wildlife Service. (2019). *Coastal California Gnatcatcher (Polioptila californica californica) Presence/Absence Survey Protocol*. Available from: <https://www.fws.gov/sites/default/files/documents/survey-protocol-for-coastalcalifornia-gnatcatcher.pdf>

Andy Olson  
City of Santa Clarita  
July 25, 2025  
Page 18 of 19

### ATTACHMENTS

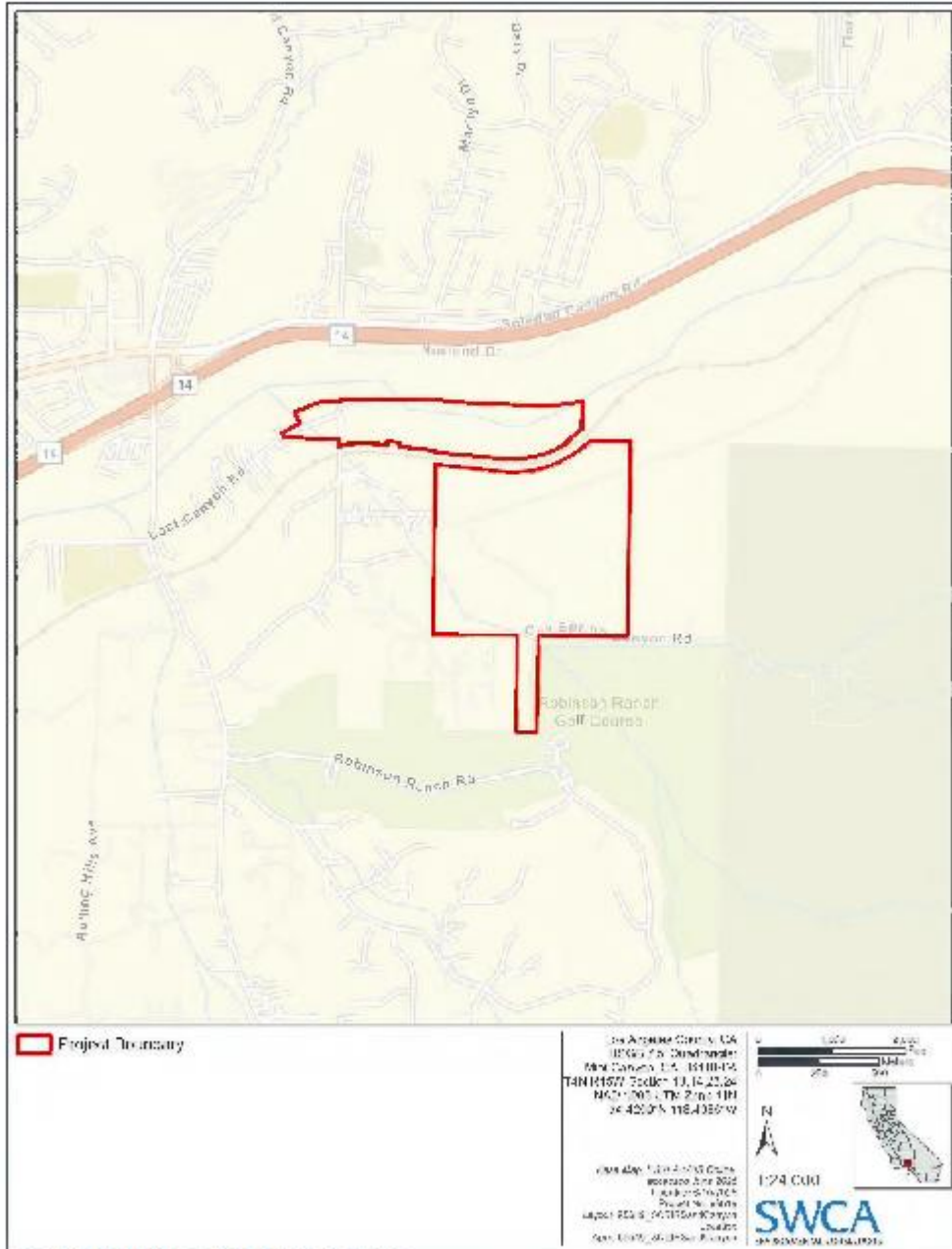


Figure 1. Project Location and Boundaries.

