

NOTICE OF EXEMPTION
(State Guidelines § 15062)

To: Assessor/Recorder/County Clerk - County of San Diego
Attention: CEQA Postings
1600 Pacific Highway, Suite 260
San Diego, CA 92101

From: Chula Vista Elementary School District
84 East J Street
Chula Vista, CA 91910

Project Name: Community Facilities District No. 22 of the Chula Vista Elementary School District ("CFD No. 22")

Project Location (specific): CFD No. 22 will encompass certain territory within Village 8 East of the Otay Ranch development project as described in the boundary map of CFD No. 22 that is on file in the District's administrative offices (address shown above) and available for public review.

Project Location (City): City of Chula Vista
(County): San Diego

Description of Nature, Purpose and Beneficiaries of Project:

The Board of Education of the Chula Vista Elementary School District ("District Board") intends to establish CFD No. 22 in accordance with the Mello-Roos Community Facilities Act of 1982, as amended. The Chula Vista Elementary School District ("District") intends that CFD No. 22 will finance or otherwise pay costs associated with making available public facilities to be owned and operated by the District. The actions taken to establish CFD No. 22 are administrative in nature, and individual construction projects financed by CFD No. 22 will be subject to independent review in accordance with the California Environmental Quality Act ("CEQA") prior to approval of the construction.

Name of Public Agency Approving Project: Chula Vista Elementary School District

Name of Person or Agency Carrying Out Project: Chula Vista Elementary School District

Exempt Status: (check one)

- Ministerial (Sec. 21080(b)(1); 15268)
- Declared Emergency (Sec. 21080(b)(3); 15269(a));
- Emergency Project (Sec. 21080(b)(6); 15269(b)(c));
- Categorical Exemption. State type and section number: _____
- Statutory Exemptions. State code number: _____
- [Sec. 15061(b)(3)]
- See below

(Notice continues on following page.)

Reasons Why Project is Exempt:

This matter is exempt from the requirements of CEQA because the proposed formation of CFD No. 22 is not a "project" as defined by CEQA, as it can be determined with certainty that the formation of CFD No. 22, together with the levy of special taxes and authorization and issuance of bonds or other securities, will not have a significant effect on the environment. (See Cal. Code Regs., tit. 14, § 15061(b)(3), and *Kaufman & Broad—South Bay, Inc. v. Morgan Hill Unified Sch. Dist.*, (1992) 9 Cal.App.4th 464.) The District Board made such finding during proceedings related to formation of CFD No. 22.

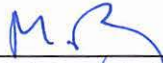
Contact Person: Mark Pong, Assistant Superintendent, Business Services and Support
Chula Vista Elementary School District
Phone: (619) 425-9600

If filed by applicant: *Not Applicable*

1. Attach certified document of exemption finding.
2. Has Notice of Exemption been filed by the public agency approving the project?

Submission of this form is optional. State agencies may file the form with the Office of Planning and Research pursuant to Public Resources Code Section 21108(b). Local agencies may file this form with the county clerk pursuant to Public Resources Code Section 21152(b). The filing of the notice starts a 35-day statute of limitations on court challenges to the approval of the project under Public Resources Code Section 21167(d). Failure to file the notice results in the statute of limitations being extended to 180 days. The information filed by state agencies is maintained at the Governor's Office of Land Use and Climate Innovation, 1400 Tenth Street, Sacramento, California, 95814; telephone (916) 322-2318.

Dated: 6/16/25



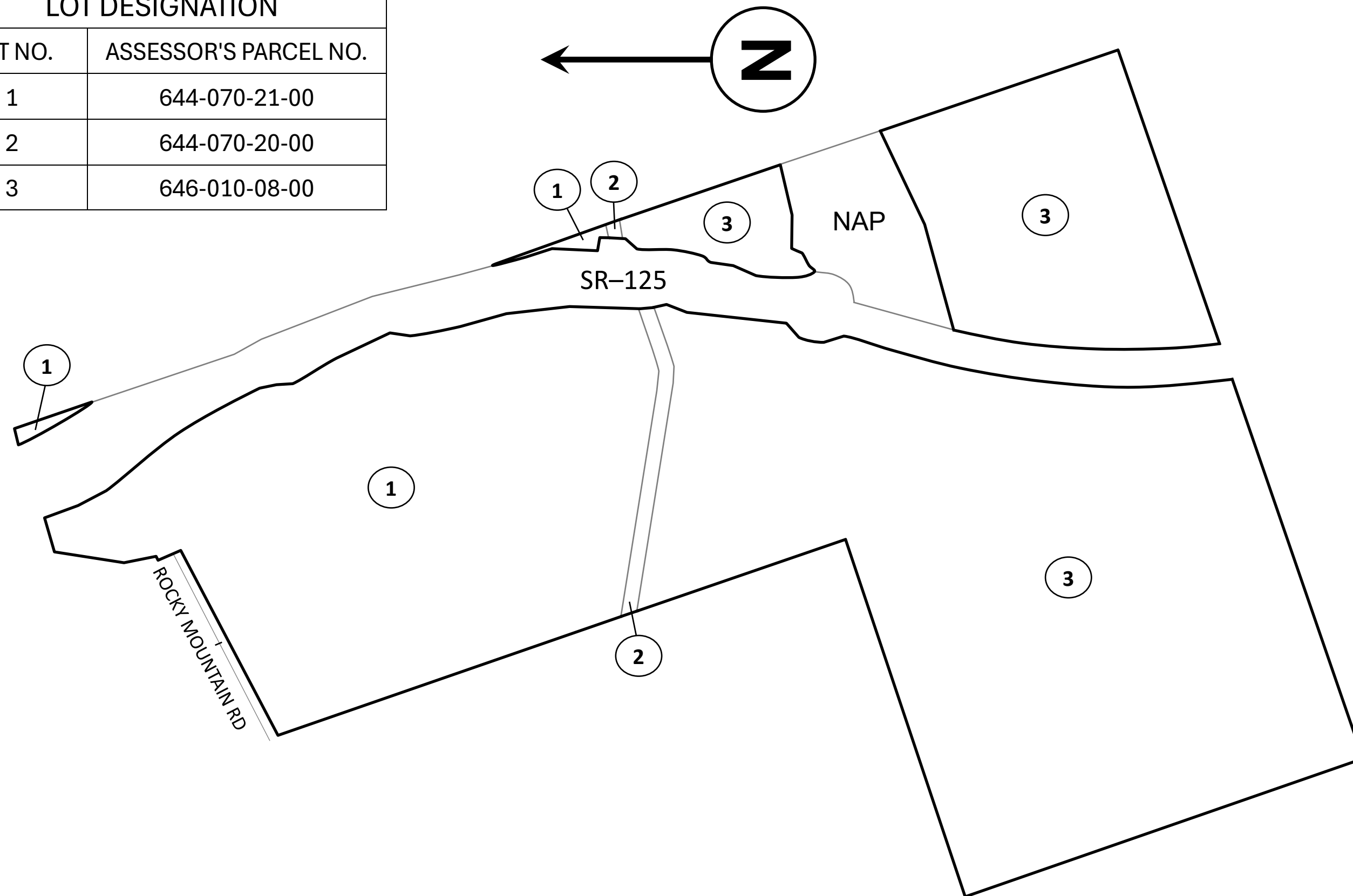
Mark Pong, Assistant Superintendent, Business Services and Support, Chula Vista Elementary School District

PROPOSED BOUNDARY MAP OF COMMUNITY FACILITIES DISTRICT NO. 22

CHULA VISTA ELEMENTARY SCHOOL DISTRICT
 COUNTY OF SAN DIEGO
 STATE OF CALIFORNIA

FILED IN THE OFFICE OF THE SECRETARY OF THE BOARD OF THE CHULA VISTA ELEMENTARY SCHOOL DISTRICT THIS _____ DAY OF _____, 20____.

LOT DESIGNATION	
LOT NO.	ASSESSOR'S PARCEL NO.
1	644-070-21-00
2	644-070-20-00
3	646-010-08-00



 SECRETARY OF THE BOARD OF EDUCATION
 CHULA VISTA ELEMENTARY SCHOOL DISTRICT
 STATE OF CALIFORNIA

I HEREBY CERTIFY THAT THE WITHIN MAP SHOWING THE BOUNDARIES OF COMMUNITY FACILITIES DISTRICT NO. 22 OF THE CHULA VISTA ELEMENTARY SCHOOL DISTRICT, COUNTY OF SAN DIEGO, STATE OF CALIFORNIA, WAS APPROVED BY THE BOARD OF EDUCATION AT A REGULAR MEETING THEREOF, HELD ON THE _____ DAY OF _____, 20____ BY ITS RESOLUTION NO. _____.

 SECRETARY OF THE BOARD OF EDUCATION
 CHULA VISTA ELEMENTARY SCHOOL DISTRICT
 STATE OF CALIFORNIA

FILED THIS _____ DAY OF _____, 20____, AT THE HOUR OF _____ O'CLOCK ____M. AS DOCUMENT NO. _____ IN BOOK _____ OF MAPS OF ASSESSMENT AND COMMUNITY FACILITIES DISTRICTS AT PAGE _____ IN THE OFFICE OF THE COUNTY ASSESSOR/RECORDER OF THE COUNTY OF SAN DIEGO, STATE OF CALIFORNIA.

BY: _____
 DEPUTY RECORDER
 COUNTY RECORDER, JORDAN Z. MARKS
 COUNTY OF SAN DIEGO
 STATE OF CALIFORNIA

LEGEND

	COMMUNITY FACILITIES DISTRICT NO.22 BOUNDARIES
	PARCEL BOUNDARY
NAP	NOT A PART
	LOT NUMBER

NOTE: FOR PARTICULARS OF LINES AND DIMENSIONS OF ASSESSOR'S PARCELS, REFERENCE IS MADE TO THE SAN DIEGO COUNTY ASSESSOR'S PARCEL MAPS.

