

SPECIFICATIONS

GENERAL

- ALL EROSION CONTROL WORK WILL BE PERFORMED IN ACCORDANCE WITH THIS EROSION CONTROL PLAN.
- ALL DISTURBED AREAS MUST BE WINTERIZED BY SEPTEMBER 15TH OF THE YEAR THAT THE PROJECT IS UNDER CONSTRUCTION.
- A REQUEST TO ALLOW GRADING TO EXTEND BEYOND SEPTEMBER 15TH MAY BE GRANTED BY THE NAPA COUNTY PLANNING, BUILDING AND ENVIRONMENTAL SERVICES DEPARTMENT - CONSERVATION DIVISION IF A MAJORITY OF THE GRADING HAS BEEN COMPLETED AND THERE COULD BE A DETRIMENTAL EFFECT ON THE ENVIRONMENT IF THE REMAINING GRADING REMAINS INCOMPLETE. A REQUEST TO ALLOW GRADING TO EXTEND BEYOND OCTOBER 1ST MUST BE SUBMITTED IN WRITING TO NAPA COUNTY NO LATER THAN OCTOBER 1ST. GRADING BEYOND THE WINTERIZATION DEADLINE WILL NOT BE ALLOWED PRIOR TO APPROVAL BY NAPA COUNTY.
- ALL PERMANENT DRAINAGE FACILITIES AND SEDIMENT RETENTION STRUCTURES MUST BE INSTALLED BY SEPTEMBER 15TH.
- ALL TEMPORARY EROSION AND SEDIMENT CONTROL DEVICES (WATER BARS, SILT FENCE & STRAW WATTLES) MUST BE INSTALLED BY SEPTEMBER 15TH.
- ALL EROSION CONTROL MEASURES MUST BE INSPECTED AND MAINTAINED THROUGHOUT THE RAINY SEASON (SEPTEMBER 15TH THROUGH APRIL 1ST). INSPECTIONS MUST BE PERFORMED AT LEAST ONCE PER WEEK DURING EXTENDED DRY PERIODS, IMMEDIATELY BEFORE ANTICIPATED RAIN EVENTS, ONCE EVERY 24 HOURS DURING EXTENDED RAIN EVENTS AND IMMEDIATELY FOLLOWING EACH RAIN EVENT.

VEGETATIVE COVER

- EXPOSED SOIL AREAS SHALL BE SEEDED AND MULCHED FOLLOWING FINISH GRADING. PRIOR TO SEEDING, SEEDBED POCKETS SHALL BE TRACK-WALKING UP AND DOWN THE SLOPE OR BY OTHER SIMILAR MECHANICAL MEANS TO CREATE HORIZONTALLY ORIENTED DEPRESSIONS. SEEDBED POCKETS SHALL BE 1 TO 2 INCHES DEEP AND CAPABLE TO CAPTURE SEED AND WATER RUNOFF, AND SHALL EXTEND THE LENGTH AND WIDTH OF THE AREA TO BE SEEDED. SEED MIX AND RATE OF APPLICATION SHALL BE AS SHOWN BELOW; AN ALTERNATIVE MIX MAY BE USED UPON PRIOR APPROVAL OF THE ENGINEER.
- ALL SEEDED AREAS ARE TO BE FERTILIZED TO PROMOTE SUCCESSFUL ESTABLISHMENT OF THE COVER CROP. THE RECOMMENDED FERTILIZER IS AMMONIUM PHOSPHATE (16-20-0) APPLIED AT A RATE OF 250 POUNDS PER ACRE.
- ALL DISTURBED AREAS ARE TO BE MULCHED WITH STRAW AT A RATE OF 3,000 POUNDS PER ACRE TO PROTECT THE BARE SOILS WHILE THE COVER CROP IS GETTING ESTABLISHED.
- STRAW SHOULD BE SPREAD BY HAND IN A MANNER THAT PROMOTES FORMATION OF AN INTERWOVEN MATRIX. CRIMPING STRAW INTO THE SOIL IS HIGHLY RECOMMENDED ESPECIALLY ON WINDY SITES AND IS MANDATORY ON SITES WHERE STRAW IS MECHANICALLY CHOPPED AND BLOWN INTO PLACE.
- ALL SOIL CUT AND FILL SLOPES THAT ARE STEEPER THAN 4:1 (HORIZONTAL TO VERTICAL) MUST BE COVERED WITH NORTH AMERICAN GREEN C125EN EROSION CONTROL BLANKET AFTER THE EROSION CONTROL SEED AND FERTILIZER HAVE BEEN PLACED. EROSION CONTROL BLANKET SHALL BE PLACED AS RECOMMENDED BY MANUFACTURER.
- CONTRACTOR MUST MAINTAIN AN ADEQUATE SUPPLY OF EROSION CONTROL MATERIALS ONSITE TO FACILITATE MAINTENANCE AND REPAIR THROUGHOUT THE RAINY SEASON. TYPICAL MATERIALS THAT SHOULD BE KEPT ONSITE INCLUDE SILT FENCE AND STRAW WATTLE SEDIMENT BARRIERS, GRAVEL BAGS, EROSION CONTROL BLANKETS, STRAW AND EROSION CONTROL SEED MIX.

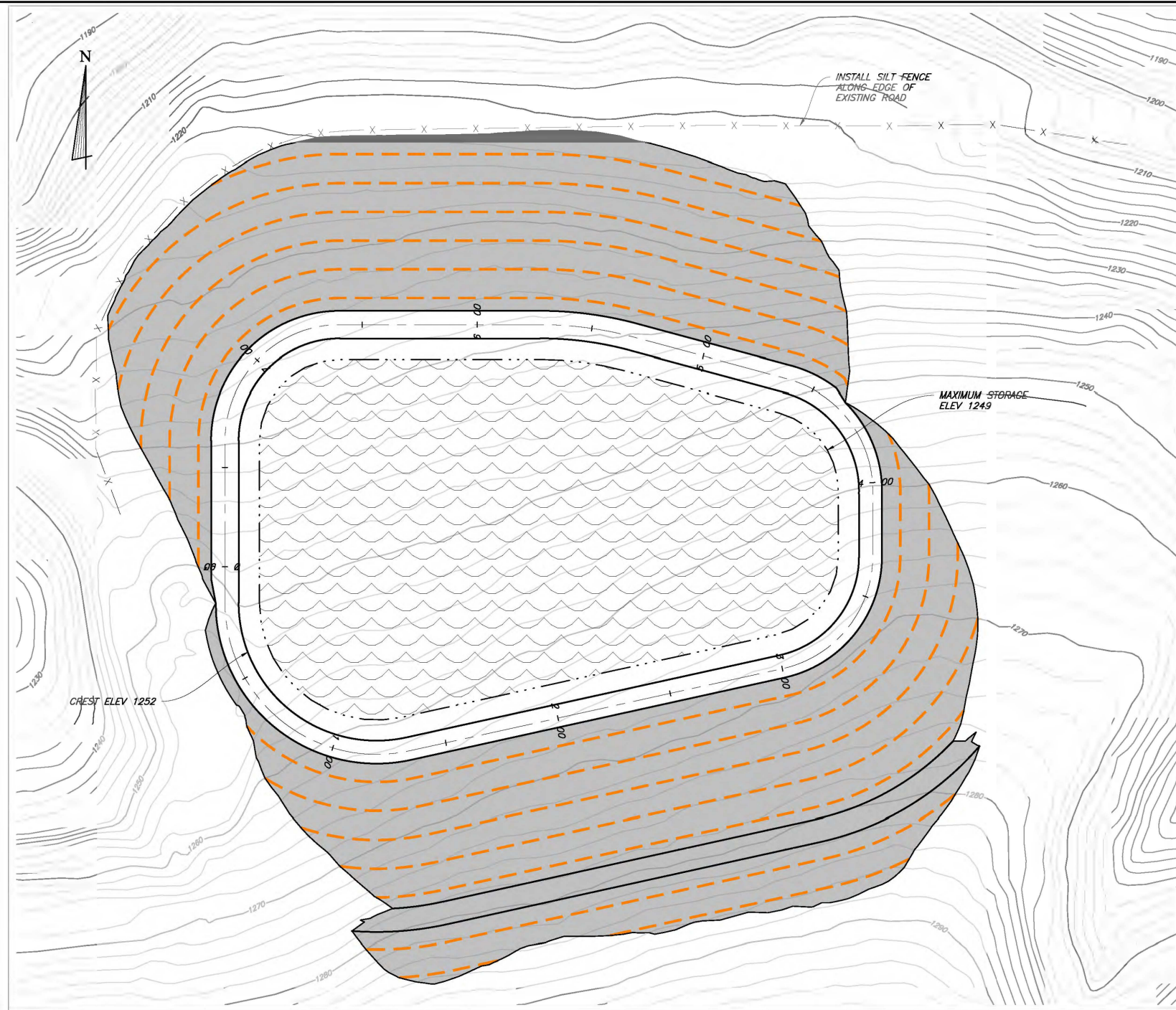
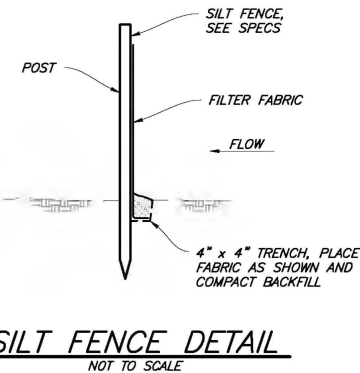
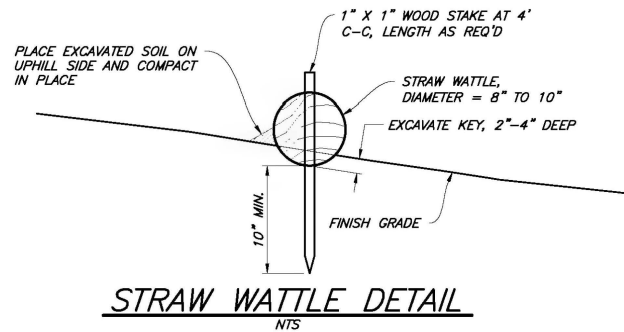
COMMON NAME (BOTANICAL NAME)	RATE PER ACRE
SUB CLOVER (VARIETY MIXTURE)	8.5 POUNDS
"HYCON" ROSE CLOVER (TRIFOLIUM HIRTUM)	8.5 POUNDS
ZORRO ANNUAL FESCUE (VULPIA MYUROS)	8.0 POUNDS
TOTAL	25 POUNDS

SILT FENCING

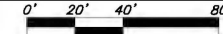
- SILT FENCING: SILT FENCING SHALL BE INSTALLED AS DIRECTED BY THE ENGINEER. SILT FENCE SHALL BE 3 FOOT MIRAFI "PREFAB SILT FENCE WITH POSTS" OR "SILT FENCE WITH POCKETS" USING 1.5 INCH SQUARE KILN-DRIED WOOD POSTS OR METAL TEE POSTS, 48 INCHES LONG, OR AN APPROVED EQUAL. INSTALL PER MANUFACTURER'S INSTRUCTIONS, PROVIDE OVERLAP WHEN JOINING END SECTIONS.

STRAW WATTLES

- STRAW WATTLES (STRAW ROLLS): STRAW WATTLES SHALL BE INSTALLED AT LOCATIONS AS DIRECTED BY THE ENGINEER. INSTALL PER MANUFACTURER'S INSTRUCTIONS, PROVIDE OVERLAP WHEN JOINING END SECTIONS. WATTLES SHALL BE INSTALLED ON A LEVEL CONTOUR. A CONTINUOUS SEGMENT OF STRAW WATTLE SHALL NOT DEVIATE MORE THAN 6 INCHES IN ELEVATION THROUGHOUT ITS LENGTH.



DRAINAGE AND EROSION CONTROL PLAN



LEGEND	
	STRAW WATTLE
	SILT FENCE
	EROSION CONTROL SEEDING

P:\Drawings\The Capra\CAD\Estf. Money Hole Erosion Control.dwg
 7/12/2024 6:02 PM

REVISIONS			
REF	DESCRIPTION	APVD	DATE

**PRELIMINARY
NOT FOR CONSTRUCTION**

Designed By	D.P. LOUNSBURY
Drawn By	P. INTHARATH
Checked By	N.F. BONSIGNORE
Approved By	D.P. LOUNSBURY
Date	JULY 2024

Wagner Bonsignore
Consulting Civil Engineers, A Corporation

2151 River Plaza Drive
Suite 100
Sacramento, California 95833
Ph: 916-441-6850
Fx: 916-779-3120



THE CAPRA COMPANY

EAST MONEY HOLE RESERVOIR

**EROSION CONTROL
PLAN, DETAILS AND SPECIFICATIONS**

SHEET
1
OF
1
SHEETS