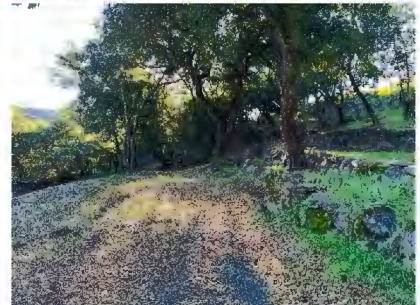


# Biological Resources Reconnaissance Survey

Sage Ridge Vineyards (APN: 025-440-053)

Napa County, California



## Prepared for:

Capra Vineyards  
P.O. Box 2340  
Windsor, CA 95492

Scott Zapotocky  
scott@capravineyards.com

January 2024

WRA Project # 340010

## Prepared by:

WRA, Inc.  
2169-G East Francisco Boulevard  
San Rafael, CA 94901

Aaron Arthur  
arthur@wra-ca.com



*[Page left intentionally blank]*

## EXECUTIVE SUMMARY

This report details the regulatory background, methods, results, and recommendations of a Biological Resources Reconnaissance Survey located on Sage Ridge (Study Area) in Napa County, California. WRA, Inc. performed this assessment in winter (January) 2024. The Study Area is composed of developed, non-native grassland, chamise chaparral, coast live oak woodland, and a portion of a reservoir. The Proposed Project involves the development of an off-line synthetic lined irrigation reservoir with some earthen spoils deposited elsewhere on the property for a 3.2-acre maximum disturbance limit (Project Area).

The Project Area is situated entirely within the non-sensitive land cover types of developed areas and non-native grassland. Earthen spoils may be deposited near or under the drip line of native trees, such spoils will be deposited with light or medium machinery which spread the spoils to prevent impacts to native trees. No jurisdictional aquatic resources are within the Study Area.

The Study Area has the potential to support six special-status plants; however, none of these species would occur within the Project Area. Therefore, there will be no impacts to special-status plants, and there are no further actions recommended for such.

Three special-status bats and one special-status bird (and non-status birds with baseline legal protections) have the potential to occur in the Study Area. Mitigation measures and best management practices have been developed and provided herein to avoid impacts to these species.

# Contents

1.0 INTRODUCTION .....	1
2.0 REGULATORY BACKGROUND.....	2
2.1 Federal and State Regulatory Setting .....	2
2.1.1 Sensitive Land Cover Types .....	2
2.1.2 Special-status Species .....	3
2.2 Napa County Regulatory Setting .....	5
3.0 ENVIRONMENTAL SETTING .....	9
3.1 Topography and Soils.....	9
3.2 Climate and Hydrology.....	10
3.3 Land Cover and Land Use .....	11
4.0 ASSESSMENT METHODS .....	11
4.1 Land Cover Types .....	12
4.1.1 Terrestrial Land Cover Types .....	12
4.1.2 Aquatic Resources .....	12
4.2 Special-status Species .....	13
4.2.1 General Assessment.....	13
4.2.2 Special-status Plants.....	14
4.2.3 Special-status Wildlife .....	14
4.2.4 Critical Habitat, Essential Fish Habitat, and Wildlife Corridors.....	14
5.0 ASSESSMENT RESULTS .....	14
5.1 Land Cover Types .....	14
5.1.1 Terrestrial Land Cover Types .....	15
5.1.2 Aquatic Resources .....	16
5.2 Special-status Species .....	16
5.2.1 Special-status Plant Species.....	16
5.2.2 Special-status Wildlife Species.....	17
5.2.3 Critical Habitat, Essential Fish Habitat, and Wildlife Corridors.....	19
6.0 PROJECT ANALYSIS AND RECOMMENDATIONS .....	19
6.1 Land Cover Types .....	19
6.1.1 Terrestrial Land Cover Types .....	19
6.1.2 Aquatic Resources .....	20
6.2 Special-status Species .....	20
6.2.1 Special-status Plants.....	20
6.2.2 Special-status Wildlife .....	20
6.2.3 Critical Habitat, Essential Fish Habitat, and Wildlife Corridors.....	20
7.0 REFERENCES .....	22

## List of Tables

Table 1. Napa County Stream Setbacks .....	8
--	---

## List of Appendices

Appendix A – Figures	
Appendix B – Species Observed in the Study Area	
Appendix C – Potential for Special-status Species to Occur in the Study Area	
Appendix D – Representative Photographs	
Appendix E – Statement of Qualifications	

## List of Preparers

Aaron Arthur – Senior Botanist / Wetland Specialist

## Definitions

Study Area: The area throughout which the assessment was performed, the Project Area plus a 50-foot buffer, totaling 7.6 acres.

Project Area: The area encompassing the proposed project (reservoir, spoil piles); the area evaluated for potential impacts to sensitive biological resources, totaling 3.2 acres.

## List of Abbreviations & Acronyms

BGEPA	Bald and Golden Eagle Protection Act
BIOS	Biogeographic Information and Observation System
BRRS	Biological Resources Reconnaissance Survey
CCR	California Code of Regulations
CDFW	California Department of Fish and Wildlife
CECP	California Essential Connectivity Project
CESA	California Endangered Species Act
CEQA	California Environmental Quality Act
CFGC	California Fish and Game Code
CFR	Code of Federal Regulations
CNDDB	California Natural Diversity Database
CNPPA	California Native Plant Protection Act
CNPS	California Native Plant Society
County	Napa County
Corps	U.S. Army Corps of Engineers
CRPR	California Rare Plant Ranks
CRLF	California Red-legged Frog
CSRL	California Soils Resources Lab
CWA	Clean Water Act
EFH	Essential Fish Habitat
ESA (Federal)	Endangered Species Act
MBTA	Migratory Bird Treaty Act
NCBDR	Napa County Baseline Data Report
NOAA	National Oceanic and Atmospheric Administration
NMFS	National Marine Fisheries Service
NRCS	Natural Resource Conservation Service
NWI	National Wetland Inventory
NWPL	National Wetland Plant List
OHWM	Ordinary High Water Mark
RWQCB	Regional Water Quality Control Board
SSC	Species of Special Concern
SFP	State Fully Protected Species
USDA	U.S. Department of Agriculture
USFWS	U.S. Fish and Wildlife Service
USGS	U.S. Geological Survey
WBWG	Western Bat Working Group
WRA	WRA, Inc.

## 1.0 INTRODUCTION

On January 11, 2024, WRA, Inc. (WRA) performed an assessment of biological resources at Sage Ridge Vineyards (APN: 025-440-053; hereafter Study Area) in Napa County California (Figure A-1, Appendix A). The purpose of this study was to gather the information necessary to complete a review of biological resources under the California Environmental Quality Act (CEQA) to meet the guidelines outlined by Napa County in *Guidelines for Preparing Biological Resources Reconnaissance Surveys* (Napa County 2016a) and *Guidelines for Preparing Special-status Plant Studies* (Napa County 2016b).

A biological resources reconnaissance survey (BRRS) provides general information on the presence, or potential presence, of sensitive species and habitats. These survey(s) contain the results of a focused protocol-level survey for listed plant species in the Study Area; however, protocol-level surveys for wildlife were not included as part of the survey. This survey is not a formal wetland delineation; in instances where such a delineation may be required for project approval by local, state, or federal agencies, results would be reported herein, but may be presented elsewhere in separate reports. This survey is based on information available at the time of the study and on-site conditions that were observed on the date(s) the site was visited.

This report describes the results of the site visits, which assessed the Study Area for (1) the presence of sensitive land cover types, (2) the potential for land cover types on the site to support special-status plant and wildlife species, and (3) the presence of any other sensitive natural resources protected by local, state, or federal laws and regulations. Special-status species observed during the site assessment were documented and their presence is discussed herein. Specific findings on the habitat suitability or presence of special-status species or sensitive habitats may require that protocol-level surveys or other studies be conducted; recommendations for additional studies are provided, if necessary.

The Proposed Project involves the installation of an off-line reservoir that will provide irrigation for on-site vineyards and be fed by on-site well water. It is WRA's understanding that the cut-fill does not balance, with cut soil being placed in any number of four potential locations within the subject property. Collectively, the reservoir and four spoils areas constitute Project Area, and with a 50-foot buffer, constitute the Study Area. Site preparation (cut-and-fill, grading and shaping, reservoir lining, irrigation system and infrastructure, installation of erosion control measures, seeding cover crop, and installation of irrigation pipelines and trellis) will occur during the grading window of April 1 through September 15. By September 15, the site will be winterized with placement of straw wattles, seeding of vineyard avenues and planting areas, and straw mulch spread over disturbed areas. Spoils will be placed at any number of the four areas designated for laydown; each are distinctly named (Figure A-4).

## 2.0 REGULATORY BACKGROUND

This report is intended to facilitate conformance of the Project with the standards outlined in the Napa County Code and General Plan. In addition to the requirements of Napa County, the Project may also be subject to several federal and state regulations designed to protect sensitive natural resources. Full analysis of these requirements in the context of the Project is addressed herein.

### 2.1 Federal and State Regulatory Setting

#### 2.1.1 Sensitive Land Cover Types

Land cover types are herein defined as those areas of a particular vegetation type, soil or bedrock formation, aquatic features, and/or other distinct phenomena. Typically, land cover types have identifiable boundaries that can be delineated based on changes in plant assemblages, soil or rock types, soil surface or near-surface hydroperiod, anthropogenic or natural disturbance, topography, elevation, etc. Many land cover types are not considered sensitive or otherwise protected under the environmental regulations discussed here. However, these land cover types typically provide essential ecological and biological functions for plants and wildlife, including, frequently, special-status species. Those land cover types that are considered or protected under one or more environmental regulations are discussed below.

Waters of the United States: The United States Army Corps of Engineers (Corps) regulates “Waters of the United States” under Section 404 of the Clean Water Act (CWA). Waters of the United States are defined in the Code of Federal Regulations (CFR) as waters susceptible to use in commerce, including interstate waters and wetlands, all other waters (intrastate waterbodies, including wetlands), and their tributaries (33 CFR 328.3). Potential wetland areas, according to the three criteria used to delineate wetlands as defined in the Corps Wetlands Delineation Manual (Environmental Laboratory 1987), are identified by the presence of (1) hydrophytic vegetation, (2) hydric soils, and (3) wetland hydrology. Areas that are inundated at a sufficient depth and for a sufficient duration to exclude growth of hydrophytic vegetation are subject to Section 404 jurisdiction as “other waters” and are often characterized by an ordinary high water mark (OHWM). Other waters, for example, generally include lakes, rivers, and streams. The placement of fill material into Waters of the United States generally requires an individual or nationwide permit from the Corps under Section 404 of the CWA.

Waters of the State: The term “Waters of the State” is defined by the Porter-Cologne Act as “any surface water or groundwater, including saline waters, within the boundaries of the state.” The Regional Water Quality Control Board (RWQCB) protects all waters in its regulatory scope and has special responsibility for wetlands, riparian areas, and headwaters. These waterbodies have high resource value, are vulnerable to filling, and are not systematically protected by other programs. RWQCB jurisdiction includes “isolated” wetlands and waters that may not be regulated by the Corps under Section 404. Waters of the State are regulated by the RWQCB under the State Water Quality Certification Program which regulates discharges of fill and dredged material under Section 401 of the CWA and the Porter-Cologne Water Quality Control Act. Projects that require a Corps permit, or fall under other federal jurisdiction, and have the potential to impact Waters of the State, are required to comply with the terms of the Water Quality Certification determination. If a project does not require a federal permit but does involve dredge or fill activities that may result

in a discharge to Waters of the State, the RWQCB has the option to regulate the dredge and fill activities under its state authority in the form of Waste Discharge Requirements. The San Francisco Bay RWQCB, which has jurisdiction over projects in the Napa River watershed, recently adopted the General Permit for Vineyard Properties in the Napa River and Sonoma Creek Watersheds to comply with the WDRs for sediment and nutrient discharge from vineyards.

Streams, Lakes, and Riparian Habitat: Streams and lakes, as habitat for fish and wildlife species, are subject to jurisdiction by CDFW under Sections 1600-1616 of California Fish and Game Code (CFGC). Alterations to or work within or adjacent to streambeds or lakes generally require a 1602 Lake and Streambed Alteration Agreement. The term “stream”, which includes creeks and rivers, is defined in the California Code of Regulations (CCR) as “a body of water that flows at least periodically or intermittently through a bed or channel having banks and supports fish or other aquatic life [including] watercourses having a surface or subsurface flow that supports or has supported riparian vegetation” (14 CCR 1.72). In addition, the term “stream” can include ephemeral streams, dry washes, watercourses with subsurface flows, canals, aqueducts, irrigation ditches, and other means of water conveyance if they support aquatic life, riparian vegetation, or stream-dependent terrestrial wildlife (CDFG 1994). “Riparian” is defined as “on, or pertaining to, the banks of a stream.” Riparian vegetation is defined as “vegetation which occurs in and/or adjacent to a stream and is dependent on, and occurs because of, the stream itself” (CDFG 1994). Removal of riparian vegetation also requires a Section 1602 Lake and Streambed Alteration Agreement from CDFW.

Sensitive Natural Communities: Sensitive natural communities not discussed above include habitats that fulfill special functions or have special values. Natural communities considered sensitive are those identified in local or regional plans, policies, regulations, or by the CDFW. CDFW ranks sensitive communities as "threatened" or "very threatened" (CDFG 2010, CDFW 2018a) and keeps records of their occurrences in its California Natural Diversity Database (CNDDDB; CDFW 2018a). CNDDDB vegetation alliances are ranked 1 through 5 based on NatureServe's (2018) methodology, with those alliances ranked globally (G) or statewide (S) as 1 through 3 considered sensitive. Impacts to sensitive natural communities identified in local or regional plans, policies, or regulations or those identified by the CDFW or U.S. Fish and Wildlife Service (USFWS) must be considered and evaluated under CEQA (CCR Title 14, Div. 6, Chap. 3, Appendix G). The Napa County Baseline Data Report (NCBDR) identifies sensitive Napa County natural communities, discussed further in Section 2.2 below (Napa County 2005).

### 2.1.2 Special-status Species

Plants: Special-status plants include taxa that have been listed as endangered or threatened, or are formal candidates for such listing, under the federal Endangered Species Act (ESA) and/or California Endangered Species Act (CESA). The California Native Plant Protection Act (CNPPA) lists 64 “rare” or “endangered” and prevents “take”, with few exceptions, of these species. Plant species on the California Native Plant Society (CNPS) Rare and Endangered Plant Inventory (Inventory) with California Rare Plant Ranks (Rank) of 1, 2, and 3 are also considered special-status plant species and must be considered under CEQA. Rank 4 species are typically only afforded protection under CEQA when such species are particularly unique to the locale (e.g., range limit, low abundance/low frequency, limited habitat) or are otherwise considered locally rare. A description of the CNPS Ranks is provided below in Appendices B and C. Additionally, any plant

species listed as sensitive within the Napa County General Plan or NCBDR are likewise considered sensitive.

Wildlife: As with plants, special-status wildlife includes species/taxa that have been listed or are formal candidates for such under ESA and/or CESA. The federal Bald and Golden Eagle Protection Act provides relatively broad protections to both of North America's eagle species (bald [*Haliaeetus leucocephalus*] and golden eagle [*Aquila chrysaetos*]) that in some regards are similar to those provided by ESA. The CFGC designates some species as Fully Protected (SFP), which indicates that take of that species cannot be authorized through a state permit. Additionally, CDFW Species of Special Concern (species that face extirpation in California if current population and habitat trends continue) are given special consideration under CEQA and therefore considered special-status species. In addition to regulations for special-status species, most native birds in the United States, including non-status species, have baseline legal protections under the Migratory Bird Treaty Act of 1918 and CFGC, i.e., sections 3503, 3503.5 and 3513. Under these laws/codes, the intentional harm or collection of adult birds as well as the intentional collection or destruction of active nests, eggs, and young is illegal. For bat species, the Western Bat Working Group (WBWG) designates conservation status for species of bats, and those with a high or medium-high priority are typically given special consideration under CEQA. Finally, wildlife species/taxa named as "locally rare" in the NCBDR (Napa County 2005) are also treated as special-status for purposes of this assessment.

Critical Habitat, Essential Fish Habitat, and Wildlife Corridors: Critical habitat is a term defined in the ESA as a specific and formally-designated geographic area that contains features essential for the conservation of a threatened or endangered species, and that may require special management and protection. The ESA requires federal agencies to consult with the USFWS to conserve listed species on their lands and to ensure that any activities or projects they fund, authorize, or carry out will not jeopardize the survival of a threatened or endangered species. In consultation for those species with critical habitat, federal agencies must also ensure that their activities or projects do not adversely modify critical habitat to the point that it will no longer aid in the species' recovery. Note that designated critical habitat areas that are currently unoccupied by the species but which are deemed necessary for the species' recovery are also protected by the prohibition against adverse modification.

The Magnuson-Stevens Fishery Conservation and Management Act ("Magnuson-Stevens Act") provides for conservation and management of fishery resources in the U.S. This Act establishes a national program intended to prevent overfishing, rebuild overfished stocks, ensure conservation, and facilitate long-term protection through the establishment of Essential Fish Habitat (EFH). EFH consists of aquatic areas that contain habitat essential to the long-term survival and health of fisheries, which may include the water column, certain bottom types, vegetation (e.g. eelgrass (*Zostera* spp.)), or complex structures such as oyster beds. Any federal agency that authorizes, funds, or undertakes action that may adversely affect EFH is required to consult with NMFS.

Movement and migratory corridors for native wildlife (including aquatic corridors) as well as wildlife nursery sites are given special consideration under CEQA. Additionally, the NCBDR (Napa County 2005) outlines important corridor resources within the County and encourages protection of these resources via Policy CON-18 (see section 2.2 below).

## 2.2 Napa County Regulatory Setting

Napa County General Plan and Napa County Code: Natural resource use in Napa County is regulated by the Napa County General Plan (Napa County 2008). Below are relevant policies from the General Plan pertaining to wetlands and biological resources which may be applicable to the Project.

### *Napa County Baseline Data Report*

Specific sensitive Land Cover Types are identified in the NCBDR (Napa County 2005). In addition to those Land Cover Types identified by CDFW, the NCBDR also identifies biotic communities of limited distribution that “encompass less than 500 acres of cover within the County and are considered by local biological experts to be worthy of conservation” (Napa County 2005).

### *Natural Resource Goals and Policies*

Policy CON-13: The County shall require that all discretionary residential, commercial, industrial, recreation, agricultural, and water development projects consider and address impacts to wildlife habitat and avoid impacts to fisheries and habitat supporting special-status species to the extent feasible. Where impacts to wildlife and special-status species cannot be avoided, projects shall include effective mitigation measures and management plans including provisions to:

- a) Maintain the following essentials for fish and wildlife resources:
  - a. Sufficient dissolved oxygen in the water.
  - b. Adequate amounts of proper food.
  - c. Adequate amounts of feeding, escaping, and nesting habitat.
  - d. Proper temperature through maintenance and enhancement of streamside vegetation volume flows, and velocity of water.
- b) Employ supplemental planting and maintenance of grasses, shrubs and trees of like quality and quantity to provide adequate vegetation cover to enhance water quality, minimize sedimentation and soil transport, and provide adequate shelter and food for wildlife and special-status species and maintain the watersheds, especially streams side areas, in good condition.
- c) Provide protection for habitat supporting special-status species through buffering or other means.
- d) Provide replacement habitat of like quantity and quality on- or off-site for special-status species to mitigate impacts to special-status species.
- e) Enhance existing habitat values, particularly for special-status species, through restoration and replanting of native plant species as part of discretionary permit review and approval.
- f) Require temporary or permanent buffers of adequate size (based on the requirements of the special-status species) to avoid nest abandonment of birds and raptors associated with construction and site development activities.
- g) Demonstrate compliance with applicable provisions and regulations of recovery plans for listed species.

Policy CON-17: Preserve and protect native grasslands, serpentine grasslands, mixed serpentine chaparral, and other sensitive biotic communities and habitats of limited distribution. The County, in its discretion, shall require mitigation that results in the following standards:

- a) Prevent removal or disturbance of sensitive natural plant communities that contain special-status plant species or provide critical habitat to special-status animal species.
- b) In other areas, avoid disturbances to or removal of sensitive natural plant communities and mitigate potentially significant impacts where avoidance is infeasible.
- c) Promote protection from overgrazing and other destructive activities.
- d) Encourage scientific study and require monitoring and active management where biotic communities and habitats of limited distribution or sensitive natural plant communities are threatened by the spread of invasive non-native species.
- e) Require no net loss of sensitive biotic communities and habitats of limited distribution through avoidance, restoration, or replacement where feasible. Where avoidance, restoration, or replacement is not feasible, preserve like habitat at a 2:1 ratio or greater within Napa County to avoid significant cumulative loss of valuable habitats.

Policy CON-18: To reduce impacts on habitat conservation and connectivity:

- a) In sensitive domestic water supply drainages<sup>1</sup> where new development is required to retain between 40 and 60 percent of the existing (as of June 16, 1993) vegetation onsite, the vegetation selected for retention should be in areas designed to maximize habitat value and connectivity.
- b) Outside of sensitive domestic water supply drainages, streamlined permitting procedures should be instituted for new vineyard projects that voluntarily retain valuable habitat and connectivity, including generous setbacks from streams and buffers around ecologically sensitive areas.
- c) Preservation of habitat and connectivity of adequate size, quality and configuration to support special-status species should be required within the project area. The size of habitat and connectivity to be preserved shall be determined based on the specific needs of the species.
- d) The County shall require discretionary projects to retain movement corridors of adequate size and habitat quality to allow for continued wildlife use based on the needs of the species occupying the habitat.
- e) The County shall require new vineyard development to be designed to minimize the reduction of wildlife movement to the maximum extent feasible. In the event the County concludes that such development will have a significant impact on wildlife movement, the County may require the applicant to relocate or remove existing perimeter fencing installed on or after February 16, 2007 to offset the impact caused by the new vineyard development.

Policy CON-19: The County shall encourage the preservation of critical habitat areas and habitat connectivity through the use of conservation easements or other methods as well as through

---

<sup>1</sup>Sensitive Domestic Water Supply Drainages: (1) Kimball Reservoir; (2) Rector Reservoir; (3) Milliken Reservoir; (4) Bell Canyon Reservoir; (5) Lake Hennessey and Friesen Lakes; (6) Lake Curry; (7) Lake Madigan

continued implementation of the Napa County Conservation Regulations associated with vegetation retention and setbacks from waterways.

Policy CON-24: Maintain and improve oak woodland habitat to provide for slope stabilization, soil protection, species diversity, and wildlife habitat through appropriate measures including one or more of the following:

- a) Preserve, to the extent feasible, oak trees and other significant vegetation that occur near the heads of drainages or depressions to maintain diversity of vegetation type and wildlife habitat as part of agriculture projects.
- b) Comply with the Oak Woodlands Preservation Act regarding oak woodland preservation to conserve the integrity and diversity of oak woodlands, and retain, to the maximum extent feasible, existing oak woodland and chaparral communities and other significant vegetation as part of the residential, commercial, and industrial approvals.
- c) Provide replacement of lost oak woodlands or preservation of like habitat at a 2:1 ratio [effectively 3:1 ratio<sup>2</sup>] when retention of existing vegetation is found to be infeasible. Removal of oak species limited in distribution shall be avoided to the maximum extent feasible.
- d) Support hardwood cutting criteria that require retention of adequate stands of oak trees sufficient for wildlife, slope stabilization, soil production be left standing.
- e) Maintain, to the extent feasible, a mixture of oak species which is needed to ensure acorn production. Black, canyon, live, and brewer oaks as well as blue, white, scrub and live oaks are common associations.

#### *General Provisions – Stream and Wetland Setbacks*

Napa County Code 18.108.025 requires stream setbacks for new land clearings for agricultural purposes. “Stream” is defined by Napa County (18.108.030) as: (1) a watercourse designated by a solid line or dash and three dots symbol on the largest scale of the United State Geological Survey (USGS) maps most recently published, or any replacement to that symbol (i.e., USGS “blue-line”); (2) any watercourse which has a well-defined channel with a depth greater than four feet and banks steeper than 3:1 and contains hydrophilic vegetation, riparian vegetation or woody-vegetation including tree species greater than ten feet in height; or (3) those watercourses listed in Resolution No. 94-19. No clearing of land for new agricultural uses as defined by Section 18.08.040 shall take place within the following setbacks from streams:

---

<sup>2</sup>Amendments to Napa County Ordinance 18.108 require a 3:1 ratio for preservation/replacement; see “Water Quality and Tree Protection Ordinance” on page 8.

Table 1. Napa County Stream Setbacks

Slope (Percent)	Required Setback
< 1	35 feet
1--5	45 feet
5--15	55 feet
15--30	65 feet
30--40	85 feet
40--50	105 feet
50--60	125 feet
60--70	150 feet

In 2019, Napa County added to Code Section 18.108.025 the requirement of a 35-foot setback for ephemeral or intermittent streams not meeting Napa County’s criteria for a stream. Likewise, 18.108.026 was added to the Napa County Code to include the requirement of a 50-foot setback from the delineated edge of wetland boundaries. Ordinance No. 1438 adopted by the Board of Supervisors allowed for a one-time exemption from the Ordinance (and therefore the updated stream and wetland setbacks) for projects that are less than 15 percent slope and less than 5 acres.

*Vegetation Preservation and Replacement*

Napa County Code 18.108.100 requires the following conditions when granting a discretionary permit for activities within an erosion hazard area (slopes greater than 5 percent):

Existing vegetation shall be preserved to the maximum extent consistent with the project. Vegetation shall not be removed if it is identified as being necessary for erosion control in the approved erosion control plan or if necessary for the preservation of threatened or endangered plant or animal habitats as designated by state or federal agencies with jurisdiction and identified on the County’s environmental sensitivity maps.

Existing trees six inches in diameter or larger, measured at diameter breast height (DBH), or tree stands of trees six inches DBH or larger located on a site for which either an administrative or discretionary permit is required shall not be removed until the required permits have been approved by the decision-making body and tree removal has been specifically authorized.

- Trees to be retained or designated for retention shall be protected through the use of barricades or other appropriate methods to be placed and maintained at their outboard drip line during the construction phase. Where appropriate, the director may require an applicant to install and maintain construction fencing around the trees to ensure their protection during earthmoving activities. Where removal of vegetation is necessitated or authorized, the director or designee may require the planting of replacement vegetation of an equivalent kind, quality and quantity.

## Water Quality and Tree Protection Ordinance

In 2019, the Napa County Board of Supervisors adopted the Water Quality and Tree Protection Ordinance (WQTPO) modifying Chapter 18.108 Conservation Regulations to provide additional protections to trees and water quality. As noted above, additional setbacks were added for ephemeral and intermittent drainages and wetlands (Chapters 18.108.025 and 18.108.026). In addition, the tree retention required by Chapter 18.108.027 in sensitive domestic water supply drainages was increased from 60 percent to 70 percent based on vegetation that existed within the parcel in 1993. For areas within the Agricultural Watershed zoning district (outside of sensitive water supply drainages), Chapter 18.108.020 subsections C and D were added that require a minimum of 70 percent canopy retention based on vegetation that existed within the parcel in 2016, and the preservation or mitigation of trees (within oak woodland/forest and/or coniferous forest land covers) at a minimum 3:1 ratio. Ordinance No. 1438 allowed for a one-time exemption from the Ordinance (and therefore the updated stream setbacks, wetland setbacks, and vegetation retention requirements) for projects that are less than 30 percent slope and less than 5 acres.

## 3.0 ENVIRONMENTAL SETTING

The approximately 7.6-acre Study Area is broken into five sub-areas all of which are situated in a single parcel (Appendix A). It is in northern Napa County, approximately seven aerial miles northeast of central Yountville and eight miles southeast of downtown St. Helena. The Study Area is situated on Sage Ridge of the southern flank of the Howell Mountains. Detailed descriptions of the local setting are below.

### 3.1 Topography and Soils

The overall topography of the Study Area is gently to steeply sloped, ranging from approximately 90 to 600 feet above sea level. According to the *Soil Survey of Napa County* (USDA 1978) and as shown in Figure A-2 (Appendix A), the Study Area is underlain by three soil mapping units: Bressa-Dibble complex, 30 to 50 percent slopes; Maymen-Millsholm-Lodo association, 30 to 75 percent slopes; and Rock outcrop. The parent soil series of all the Study Area's mapping units are summarized below.

**Bressa Series:** This series consists of moderately deep silt loam soils weathered (residuum) from sandstone and shale located on ridges and shoulders of foothills at elevations ranging from 400 to 3,000 feet (CSRL 2024, USDA 1978). These soils are not considered hydric and are well drained with medium to very rapid runoff, and moderately slow permeability (USDA 2014, USDA 1978). Native and naturalized vegetation associated with these soils are scattered oaks (*Quercus* spp.), gray pine (*Pinus sabiniana*), and annual herbs, while predominant land uses include dryland range and wildlife habitat (USDA 1978).

**Dibble Series:** This series consists of moderately deep silt loam soils formed from residuum weathered from shale and sandstone situated on upland backslopes of hills at elevations ranging from 100 to 2,500 feet (CSRL 2024, USDA 1978). These soils are not considered hydric, are well drained with slow to rapid runoff, and slow permeability (USDA 2014, USDA 1978). Native

vegetation associated with this series is composed of oaks (*Quercus* spp.) and annual grasses, and land utilization has predominantly been grazing (USDA 1978).

Lodo Series: This series consists of very shallow clay loam soils formed in residuum weathered from shale and sandstone situated on backslopes of hills at elevations ranging from 300 to 3,400 feet (CSRL 2024, USDA 1978). These soils are not considered hydric, and are somewhat excessively drained, medium to rapid runoff, and moderate permeability (USDA 2014, USDA 1978). Native and naturalized vegetation includes blue oak (*Quercus douglasii*), digger pine (*Pinus sabiniana*), chamise (*Adenostoma fasciculatum*), and buckwheat (*Eriogonum nudum*), while primary land uses include livestock grazing, wildlife habitat, and watershed protection (USDA 1978).

Maymen Series: This series consists of shallow loam soils formed from residuum weathered from shale, schist, greenstone, and sandstone situated on backslopes of hills at elevations ranging from 400 to 4,250 feet (CSRL 2024, USDA 1978). These soils are not considered hydric, and are somewhat excessively drained, with high to very high runoff and moderate to moderately rapid permeability (USDA 2014, USDA 1978). Native and naturalized vegetation include chamise (*Adenostoma fasciculatum*), manzanitas (*Arctostaphylos* spp.), ceanothuses (*Ceanothus* spp.), and scattered trees, while predominant land uses are watershed protection, wildlife habitat, and recreation (USDA 1978).

Millsholm Series: This series consists of shallow clay loam soils formed from residuum weathered from sandstone and shale situated on backslopes of hills at elevations ranging from 180 to 4,570 feet (CSRL 2024, USDA 1978). These soils are not considered hydric, and are well drained, with low to very high runoff and moderate permeability (USDA 2014, USDA 1978). Native and naturalized vegetation include blue oak (*Quercus douglasii*), digger pine (*Pinus sabiniana*), manzanitas (*Arctostaphylos* spp.), ceanothuses (*Ceanothus* spp.), and chamise (*Adenostoma fasciculatum*), while primary land uses are livestock grazing (USDA 1978).

### 3.2 Climate and Hydrology

The Study Area is above the valley fog incursion zone of Napa County. The average monthly maximum temperature of St. Helena is 89.5 degrees Fahrenheit, while the average monthly minimum temperature is 36.1 degrees Fahrenheit. Predominantly, precipitation falls as rainfall with an annual average of 36.47 inches. Precipitation-bearing weather systems are predominantly from the west and south with most of the rain falling between November and March, with a combined average of 31.35 inches (USDA 2024).

The local watershed is Chiles Creek (HUC 12: 180500020101) and the regional watershed is Conn Creek (HUC 8: 18050002). The Study Area is situated in the Napa County Planning Watershed of Fir Canyon. There are no blue-line streams or other aquatic features mapped within the Study Area on the Yountville 7.5-minute quadrangles (USGS 2015). There is a Freshwater Pond mapped in the National Wetlands Inventory (NWI; USFWS 2024a), while there are several linear features mapped as Fluvial and Pond in the California Aquatic Resources Inventory (CARI; SFEI 2024). The primary hydrologic sources are direct precipitation and consequent surface sheet flow and concentrated in-channel flow. Precipitation in the majority of the Study Area infiltrates quickly due to rocky loam soils. The Study Area was investigated for aquatic resources, with a particular focus

on the area denoted in the NWI and CARI; detailed descriptions of aquatic resources are in Section 5.1 below.

### 3.3 Land Cover and Land Use

The Study Area is predominantly actively managed developed areas and disturbed grassland, with some edges of chaparral and woodland. The developed areas include access roads, edge of a man-made lined reservoir, vineyards, and small outbuildings. The Study Area is surrounded by contiguous land covers of development, chaparral, and woodland. The five sub-Study Areas are annotated as follows: (1) Proposed Reservoir (PR); (2) Casa Paloma (CP); (3) Paloma Landing (PL); (4) Paul's Well (PW); and (5) Yurt Landing (YL). Detailed plant community descriptions are included in Section 5.1 below per sub-Study Area, and all observed plant and wildlife species are included in Appendix B. Regional land uses include rural residential, wineries, vineyards, and watershed (Google Earth 2024). Historically, land uses in the region were open rangeland of larger ranches, rural residential, vineyards, and orchards. There is no history of intensive agriculture (except vineyards), quarrying, mining, or timbering in the Study Area (Historic Aerials 2024).

## 4.0 ASSESSMENT METHODS

Prior to the site visits, WRA biologists reviewed the following literature and performed database searches to assess the potential for sensitive natural communities (e.g., wetlands) and special-status species (e.g., endangered plants):

- *Soil Survey of Napa County, California* (USDA 1978)
- Yountville 7.5-minute quadrangle (USGS 2015)
- Contemporary aerial photographs (Google Earth 2024)
- Historical aerial photographs (Historical Aerials 2024)
- National Wetlands Inventory (NWI; USFWS 2024a)
- California Aquatic Resources Inventory (CARI; SFEI 2024)
- California Natural Diversity Database (CNDDDB; CDFW 2024a)
- California Native Plant Society Electronic Inventory (CNPS 2024a)
- Consortium of California Herbaria (CCH 2024)
- USFWS Information for Planning and Consultation (USFWS 2024b)
- eBird Online Database (eBird 2024)
- CDFW Publication, *California Bird Species of Special Concern in California* (Shuford and Gardali 2008)
- CDFW and University of California Press publication *California Amphibian and Reptile Species of Special Concern* (Thomson et al. 2016)
- *Breeding Birds of Napa County, California* (Smith 2003)
- *A Field Guide to Western Reptiles and Amphibians* (Stebbins 2003)
- *A Manual of California Vegetation, 2<sup>nd</sup> Edition* (Sawyer et al. 2009)
- *A Manual of California Vegetation Online* (CNPS 2024b)
- *Preliminary Descriptions of the Terrestrial Natural Communities* (Holland 1986)
- Napa County Land Cover (NCLC) map (Thorne et al. 2004)

- *California Natural Community List* (CDFW 2018a)

Database searches (i.e., CNDDDB, CNPS) focused on the St. Helena, Chiles Valley, Lake Berryessa, Rutherford, Yountville, Capell Valley, Sonoma, Napa, and Mt. George USGS 7.5-minute quadrangles for special-status plants. The special-status wildlife evaluation was based on database searches for the entirety of Napa County.

Following the remote assessment, a botanist with 40-hour Corps wetland delineation and wildlife biologist training traversed the entire Study Area on foot to document: (1) land cover types (e.g., terrestrial communities, aquatic resources), (2) if and what type of aquatic natural communities (e.g., wetlands) are present, (3) existing conditions and to determine if such provide suitable habitat for any special-status plant or wildlife species, and (4) if special-status species are present<sup>3</sup>.

## 4.1 Land Cover Types

### 4.1.1 Terrestrial Land Cover Types

Terrestrial land cover types were mapped and evaluated across the entire Study Area. In most instances, communities are delineated based on distinct shifts in plant assemblage (vegetation) and follow the *California Natural Community List* (CDFW 2018a), *Preliminary Descriptions of the Terrestrial Natural Communities of California* (Holland 1986), and *A Manual of California Vegetation, Online Edition* (CNPS 2024b). In some cases, it may be necessary to identify variants of community types or to describe non-vegetated areas that are not described in the literature; should an undescribed variant be used, it will be noted in the description. Vegetation alliances (natural communities) with a CDFW Rank of 1 through 3 (globally critically imperiled (S1/G1), imperiled (S2/G2), or vulnerable (S3/G3), were evaluated as sensitive as part of this evaluation.<sup>4</sup> Additionally, any sensitive natural communities as described in the Napa County Baseline Data Report (NCBDR; Napa County 2005) or General Plan (Napa County 2008) were considered.

### 4.1.2 Aquatic Resources

Aquatic resources include Waters of the U.S., Waters of the State, and Streams, Lakes, and Riparian Habitat as defined in the CWA, Porter-Cologne Act, and CFGC, respectively. Napa County mandates setbacks from these aquatic resources, and therefore requires mapping of the outward extent of such features. This site assessment does not constitute a formal wetland delineation; however, the surveys looked for superficial indicators of wetlands such as hydrophytic vegetation (i.e., plant communities dominated by wetland species), evidence of inundation or flowing water, saturated soils and seepage, and topographic depressions/swales. If sample points were taken, WRA followed the *Corps of Engineers Wetlands Delineation Manual* (Environmental Laboratory 1987) and the *Regional Supplement to the Corps of Engineers Wetland Delineation Manual: Arid West Region* (Corps 2008).

---

<sup>3</sup>Due to the timing of the assessment, it may or may not constitute protocol-level species surveys; see Section 4.2 if the site assessment would constitute a formal or protocol-level species survey.

<sup>4</sup>Ranking of CDFW List of Vegetation Alliances is based on NatureServe Rankings (NatureServe 2024).

If streams potentially jurisdictional under the CWA and/or the CFGC are noted on a site, they are delineated using a mix of surveyed topography data, high resolution aerial photographs, and a sub-meter GPS unit. The OHWM would be used to determine the extent of potential Section 404 jurisdiction, while the top-of-bank would be used to determine the extent of CFGC Section 1602 and 401. Streams with associated woody vegetation were assessed to determine if these areas would be considered riparian habitat by the CDFW following *A Field Guide to Lake and Streambed Alteration Agreements, Section 1600-1607, California Fish and Game Code* (CDFG 1994). Finally, all streams were assessed to determine if they meet the Napa County definition of “stream” pursuant to Napa County Code 18.108.030.

## 4.2 Special-status Species

### 4.2.1 General Assessment

Potential occurrence of special-status species in the Study Area was evaluated by first determining which special-status species occur in the greater vicinity through a literature and database review. Database searches for known occurrences of special-status species focused on the 7.5-minute USGS quadrangles mentioned above for special-status plants and the entirety of Napa County for special-status wildlife.

A preliminary site visit was made on January 11, 2024 to evaluate the presence of suitable habitat for special-status species. Suitable habitat conditions are based on physical and biological conditions of the site, as well as the professional expertise of the investigating biologists. The potential for each special-status species to occur in the Study Area was then determined according to the following criteria:

- No Potential. Habitat on and adjacent to the site is clearly unsuitable for the species requirements (foraging, breeding, cover, substrate, elevation, hydrology, plant community, site history, disturbance regime).
- Unlikely. Few of the habitat components meeting the species requirements are present, and/or the majority of habitat on and adjacent to the site is unsuitable or of very poor quality. The species is not likely to be found on the site.
- Moderate Potential. Some of the habitat components meeting the species requirements are present, and/or only some of the habitat on or adjacent to the site is unsuitable. The species has a moderate probability of being found on the site.
- High Potential. All of the habitat components meeting the species requirements are present and/or most of the habitat on or adjacent to the site is highly suitable. The species has a high probability of being found on the site.
- Present. Species is observed on the site or has been recorded (i.e. CNDDDB, other reports) on the site in the recent past.

If a more thorough assessment was warranted, a targeted or protocol-level assessment or survey was conducted or recommended as a future study. Methods for the assessments are described below. If a special-status species was observed during the site visit, its presence was recorded and discussed below in Section 5.2.

#### 4.2.2 Special-status Plants

The site assessment corresponds to the period insufficient to observe and identify those special-status plants determined to have the potential to occur; therefore, the site assessment does not qualify for a protocol-level rare plant survey. All observable plants were identified using *The Jepson Manual, 2<sup>nd</sup> Edition* (Baldwin et. al. 2012) and Jepson Flora Project (eFlora 2024), to the taxonomic level necessary to determine if they were sensitive. Plant names follow those of Jepson Flora Project (eFlora 2024), unless otherwise noted.

#### 4.2.3 Special-status Wildlife

A general wildlife assessment was performed on January 11, 2024. This assessment consisted of traversing the entirety of the Study Area. Habitat elements required or associated with certain species (e.g., California red-legged frog) or species groups (e.g., bats, anadromous fish) were searched for and noted. Such habitat elements include, but are not limited to plant assemblages and vegetation structure; stream depth, width, hydro-period, slope, and bed-and-bank structure; rock outcrops, caves, cliffs, overhangs, and substrate texture and rock content; history of site alteration and contemporary disturbances; etc.

#### 4.2.4 Critical Habitat, Essential Fish Habitat, and Wildlife Corridors

Prior to the site visit the USFWS Critical Habitat Mapper (USFWS 2024c) and the NMFS Essential Fish Habitat Mapper (NMFS 2024) were queried to determine if critical habitat for any species or EFH, respectively, occurs within the Study Area. To account for potential impacts to wildlife movement/migratory corridors, biologists reviewed maps from the California Essential Connectivity Project (CECP) by Caltrans (2010) and CDFW's Biogeographic Information and Observation System (BIOS) (CDFW 2024b), as well as the NCBDR (Napa County 2005). The CECP maps both 1) "Natural Landscape Blocks," or discrete areas of mostly natural land covers that support biodiversity, and 2) "Essential Connectivity Areas" that provide ecological connectivity between the former. Additionally, aerial imagery (Google 2024) for the local area was referenced to assess if local core habitat areas were present within or connected to the Study Area. This assessment was refined based on observations of on-site physical and/or biological conditions.

## 5.0 ASSESSMENT RESULTS

### 5.1 Land Cover Types

Land cover types observed by WRA within the Study Area are shown in Figure A-3, and land covers overlain with the Project's limits of disturbance in Figure A-4 (Appendix A). Five land cover types are present: developed, non-native grassland (disturbed), chamise chaparral, coast live oak woodland, and man-made reservoir. The Project Area (new reservoir, spoil areas) has been intentionally sited to avoid all sensitive land cover types.

### 5.1.1 Terrestrial Land Cover Types

Developed Area (no vegetation alliance). CDFW Rank: None. Within the Study Area, the developed portions are composed of compacted gravel access roads, a portion of the existing reservoir dam, portions of vineyards, water infrastructure, and outbuildings. The vegetation and soils are highly altered, consisting of overhanging native trees and disturbance tolerant herbs. Species include coast live oak (*Quercus agrifolia*), California bay (*Umbellularia californica*), English plantain (*Plantago lanceolata*), bur weed (*Soliva sessilis*), and bur clover (*Medicago polymorpha*). The developed area totals 2.9 acres in the Study Area, of which 0.9 acre is situated in the Project Area (approximately 31 percent of the total land cover type in the Study Area). This community is synonymous with the Urban/Built-up biotic community in the NCLC (Thorne et al. 2004). This community is not considered sensitive by Napa County, CDFW, or any other regulatory entity.

Non-native Annual Grassland – Wild Oat Grassland (*Avena barbata* Semi-Natural Herbaceous Stands). CDFW Rank: None. Non-native grasslands occur throughout cismontane California, particularly in the Sierra Foothills, Coast Range, Transverse Range, and Peninsular Ranges (Sawyer et al. 2009, CNPS 2024b). These grasslands situated on a variety of landscapes including coastal terraces, valley bottoms, and foothills underlain by a variety of soil types. The Study Area contains 3.6 acres of this community type, of which 2.3 acres are situated in the Project Area (approximately 64 percent of the total land cover type in the Study Area).

The dominant cover is the herbaceous layer, which is dominated by the non-native herbs of wild oat (*Avena barbata*), soft chess (*Bromus hordeaceus*), dogtail grass (*Cynosurus echinatus*), black mustard (*Brassica nigra*), wild radish (*Raphanus sativus*), common vetch (*Vicia sativa*), and woolly-pod vetch (*Vicia villosa*). The grasslands in and around the Proposed Reservoir Study Area are situated on substrate that was once occupied by vineyards followed by intensive grading and shaping in 2020 to prevent erosion and slumping (Google Earth 2024).

Due to the recent disturbed nature of these grasslands and the prior vineyards, they do not have the potential to support special-status plants. This community is synonymous with the California Annual Grasslands Alliance biotic community in the NCLC (Thorne et al. 2004). These grasslands are not considered sensitive by the CDFW or Napa County.

Chamise Chaparral (*Adenostoma fasciculatum* Shrubland Alliance). CDFW Rank: G5 S5. Chamise chaparral occurs in the Coast Ranges, Transverse Ranges, Sierra Nevada Foothills, and Peninsular Range from Humboldt County south to San Diego County (Sawyer et al. 2009, CNPS 2024b). These shrublands are situated on varied topography, rarely flats underlain by shallow colluvial soils derived from a variety of parent materials (Sawyer et al. 2009). The Study Area contains 0.3 acre of this community type, none of which is situated within the Project Area.

The dominant cover type is shrubs with some herbs. Species include chamise (*Adenostoma fasciculatum*), sticky monkey (*Diplacus aurantiacus*), poison oak (*Toxicodendron diversilobum*), gold back fern (*Pentagramma triangularis*), and graceful bedstraw (*Galium porrigens*).

Chamise chaparral has the potential to support several special-status plants; however, this community is located entirely outside of the Project Area. This community is synonymous with the Chamise Alliance biotic community in the NCLC (Thorne et al. 2004). Some associations of these

shrublands are considered sensitive by the CDFW and Napa County; however, the association within the Study Area is common throughout Napa County and California and is therefore not afforded protection.

Coast Live Oak Woodland (*Quercus agrifolia* Woodland Alliance). CDFW Rank: G5 S4: Coast live oak woodlands occur in the outer and inner Coast Ranges, Transverse Ranges, and southern coast from northern Mendocino County south to San Diego County (Sawyer et al. 2009, CNPS 2024b). These woodlands are typically situated on terraces, canyon bottoms, slopes, and flats underlain by deep, well-drained sandy or loam substrates with high organic content (Sawyer et al. 2009). The Study Area contains 0.7 acre of this community type, none of which is situated within the Project Area.

The dominant tree is coast live oak (*Quercus agrifolia*), with other native trees in the canopy including interior live oak (*Quercus wislizenii*), California bay (*Umbellularia californica*), and Pacific madrone (*Arbutus menziesii*). Predominant understory species include common manzanita (*Arctostaphylos manzanita* ssp. *manzanita*), sticky monkey (*Diplacus aurantiacus*), California coffeeberry (*Frangula californica*), coyote brush (*Baccharis pilularis*), poison oak (*Toxicodendron diversilobum*), Pacific sanicle (*Sanicula crassicaulis*), milk maids (*Cardamine californica*), common chickweed (*Stellaria media*), California wood fern (*Dryopteris arguta*), common Pacific pea and (*Lathyrus vestitus* ssp. *vestitus*).

Coast live oak woodland has the potential to support several special-status plants; however, this community is located entirely outside of the Project Area. This community is synonymous with the Coast Live Oak Alliance biotic community in the NCLC (Thorne et al. 2004). These woodlands provide habitat for numerous common native plants and wildlife, as well as have the potential to support several special-status species associated with woodlands. The CDFW does not consider coast live oak woodland a sensitive natural community. Conversely, these woodlands are considered sensitive Napa County under the General Plan Conservation Element Policy CON-24 (oak woodland retention).

### 5.1.2 Aquatic Resources

Reservoir. No Jurisdiction. Rank: None. The Study Area contains a portion of an off-line reservoir. This reservoir contains a synthetic liner and is primarily fed by well water. At the time of the site visit, the reservoir was nearly empty, but was being filled with well water. Due to the synthetic liner, there is no vegetation within or on the edge of the reservoir. Because this feature is entirely man-made, the hydrology is controlled (pumped well water), and is not in-line, it would not be subject to jurisdiction under Section 404/401 of the CWA, the Porter Cologne Act, and Section 1600 of the CFGC. This reservoir does not have the potential to support special-status plants or wildlife.

## 5.2 Special-status Species

### 5.2.1 Special-status Plant Species

Based upon a review of the resource databases listed in Section 4.0, 69 special-status plant species have been documented in the vicinity of the Study Area. As outlined in Appendix C, six of these plants have the potential to occur in the Study Area; however, none have the potential to

occur within the Project Area be impacted by the Proposed Project.<sup>5</sup> The remaining 63 special-status plants documented from the greater vicinity are unlikely or have no potential to occur for one or more of the following:

- Hydrologic conditions (e.g., tidal, riverine) necessary to support the special-status plant species are not present in the Study Area.
- Edaphic (soil) conditions (e.g., volcanic tuff, serpentine) necessary to support the special-status plant species are not present in the Study Area.
- Topographic conditions (e.g., north-facing slope, montane) necessary to support the special-status plant species are not present in the Study Area.
- Unique pH conditions (e.g., alkali scalds, acidic bogs) necessary to support the special-status plant species are not present in the Study Area.
- Associated natural communities (e.g., interior chaparral, tidal marsh) necessary to support the special-status plant species are not present in the Study Area.
- The Study Area is geographically isolated (e.g., below elevation, coastal environ) from the documented range of the special-status plant species.
- Land use history and contemporary management (e.g., absence of mowing or grazing) has degraded the localized habitat necessary to support the special-status plant species.

The site visit was conducted during a period insufficient to identify any of the six special-status plants with the potential to occur in the Study Area. All six species would be confined to either the chamise chaparral or the coast live oak woodland portions of the Study Area but would not be situated within the Project Area. The six special-status plants are listed below.

- Napa false indigo (*Amorpha californica* var. *napensis*); CRPR 1B
- Twig-like snapdragon (*Antirrhinum virga*); CRPR 4
- Howell's broomrape (*Aphyllon validum* ssp. *howellii*); CRPR 4
- Brewer's calandrinia (*Calandrinia breweri*); CRPR 4
- Streamside daisy (*Erigeron biolettii*); CRPR 3
- Heller's bush-mallow (*Malacothamnus helleri*); CRPR 4

### 5.2.2 Special-status Wildlife Species

A total of 60 special-status wildlife species have been documented in Napa County (CDFW 2024a, Napa County 2005). As outlined in Appendix C four of these species have the potential to occur within the Study Area. The remaining 56 species are unlikely or have no potential to occur due to one or more of the following reasons:

- Aquatic habitats (e.g., rivers, estuaries, ponds) necessary to support the special-status wildlife species are not present in the Study Area.
- Vegetation habitats (e.g., coast redwood forest, coastal prairie, emergent marsh) that provide nesting and/or foraging resources necessary support the special-status wildlife species are not present in the Study Area.

---

<sup>5</sup>As per these databases, there are no documented occurrences of special-status mosses, bryophytes or lichens in Napa County.

- Physical structures and vegetation (e.g., mines/caves, riparian forest) necessary to provide nesting, cover, and/or foraging habitat to support the special-status wildlife species are not present in the Study Area.
- Host plants (e.g., dog violet, harlequin lotus) necessary to provide larval and nectar resources for the special-status wildlife species are not present in the Study Area
- The Study Area is outside (e.g., north of, west of) of the special-status wildlife species documented nesting range.

Pallid bat (*Antrozous pallidus*). CDFW Species of Special Concern, WBWG High Priority. Moderate Potential (Presence Unknown without Impact). Pallid bats are distributed from southern British Columbia and Montana to central Mexico, and east to Texas, Oklahoma, and Kansas. This species occurs in a number of habitats ranging from rocky arid deserts to grasslands, and into higher elevation coniferous forests. Roosts are typically in rock crevices, tree hollows, mines, caves, and a variety of man-made structures, including vacant and occupied buildings. Tree roosting has been documented within snags and basal hollows of conifers, and within bole cavities in oak trees. Pallid bats are primarily insectivorous, feeding on large prey that is usually taken on the ground but sometimes in flight. Prey items include arthropods such as scorpions, ground crickets, and cicadas (WBWG 2024). Trees within the Study Area (primarily oaks) may contain cavities or snags suitable for roosting by this species, and there are CNDDDB occurrences in the vicinity (CDFW 2024a). A targeted bat habitat assessment was not performed under this biological assessment; however, no trees or other potential roosting structures will be removed as part of the Proposed Project.

Fringed myotis (*Myotis thysanodes*). WBWG High Priority. Moderate Potential (Presence Unknown without Impact). The fringed myotis ranges through much of western North America from southern British Columbia, Canada, south to Chiapas, Mexico and from Santa Cruz Island in California, east to the Black Hills of South Dakota. This species is found in desert scrubland, grassland, sage-grass steppe, old-growth forest, and subalpine coniferous and mixed deciduous forest. These bats most frequently utilize oak and pinyon-juniper woodlands. The fringed myotis roosts in colonies from 10 to 2,000 individuals, although large colonies are rare. Caves, buildings, underground mines, rock crevices in cliff faces, and bridges are used for maternity and night roosts, while hibernation has only been documented in buildings and underground mines. Tree-roosting has also been documented in Oregon, New Mexico, and California (WBWG 2024). The trees within the Study Area may contain cavities or exfoliating bark suitable for roosting. A targeted bat habitat assessment was not performed under this biological assessment; however, no trees or other potential roosting structures will be removed as part of the Proposed Project.

Long-legged myotis (*Myotis volans*). WBWG High Priority. Moderate Potential. (Presence Unknown without Impact). The long-legged myotis ranges across western North America from southeastern Alaska to Baja California and east to the Great Plains and central Texas. This species is usually found in coniferous forests, but also occurs seasonally in riparian and desert habitats. They use abandoned buildings, cracks in the ground, cliff crevices, exfoliating tree bark and hollows within snags as summer day roosts. Caves and mines are used as hibernation roosts. Long-legged myotis forage in and around the forest canopy and feed on moths and other soft-bodied insects (WBWG 2024). A targeted bat habitat assessment was not performed under this biological assessment; however, no trees or other potential roosting structures will be removed as part of the Proposed Project.

White-tailed kite (*Elanus leucurus*). CDFW Fully Protected Species. Moderate Potential (Presence Unknown). White-tailed kites are resident in open to semi-open habitats throughout the lower elevations of California, including grasslands, savannahs, woodlands, agricultural areas, and wetlands. Vegetative structure and prey availability seem to be more important habitat elements than associations with specific plants or vegetative communities (Dunk 1995). Nests are constructed mostly of twigs and placed in trees, often at habitat edges. Nest trees are highly variable in size, structure, and immediate surroundings, ranging from shrubs to trees greater than 150 feet tall (Dunk 1995). This species preys upon a variety of small mammals, as well as other vertebrates and invertebrates. The Study Area provides suitable year-round habitat for white-tailed kites, including stands of oaks for nesting and open areas in close proximity for foraging. This species was not observed; however, a focused bird survey was not performed during this assessment.

### 5.2.3 Critical Habitat, Essential Fish Habitat, and Wildlife Corridors

The Study Area does not contain any designated Critical Habitat (USFWS 2024b, NMFS 2024) or Essential Fish Habitat (NMFS 2024). As per mapping by the CECP, the Study Area is not within a Natural Landscape Block but is within an Essential Connectivity Area. The Essential Connectivity Area runs from the Baylands northward through the Atlas, Howell, and Mayacama mountains of Napa County. At a localized scale the Study Area provides some connectivity between isolated undeveloped lands and developed areas (vineyards, reservoir). Overall, potential corridor functions between the Study Area and surrounding areas are limited. The proposed Project Area will not substantially inhibit the movement of wildlife.

## 6.0 PROJECT ANALYSIS AND RECOMMENDATIONS

### 6.1 Land Cover Types

#### 6.1.1 Terrestrial Land Cover Types

The Proposed Project will be entirely sited within developed areas and non-native grasslands, land cover types that are not considered sensitive by Napa County, CDFW, or other regulatory agencies. No trees will be removed as part of the Proposed Project; however, spoils from the reservoir construction may be deposited within any of the four sub-Study Areas (Figure A-4) where there are overhanging native trees. The following recommendation is forwarded to prevent impacts to adjacent native trees:

Recommendation 1: Where spoils will be placed within native tree drip lines such spoils will be spread to prevent impacts to tree roots within 48 hours. Spreading of soils may be conducted by hand or with light (e.g., skid steer) or medium (e.g., backhoe) machinery; however, use of heavy machinery (e.g., bulldozer) for this task should be avoided. Spread earthen spoils in such areas should not exceed a depth of greater than three feet.

### 6.1.2 Aquatic Resources

The only aquatic resource within the Study Area is a portion of an existing lined reservoir which has no habitat functions. The Proposed Project will not impact this non-jurisdictional aquatic resource. Therefore, no impacts will occur to aquatic resources; no further actions are recommended for such features.

## 6.2 Special-status Species

### 6.2.1 Special-status Plants

Six special-status plants have the potential to occur within either the coast live oak woodland or chamise chaparral land cover types; however, these areas situated entirely outside of the Project Area. Therefore, no impacts will occur to special-status plants; no further actions are recommended for these species.

### 6.2.2 Special-status Wildlife

The Study Area has the potential to support four special-status wildlife species (three bats, one bird), as well as non-status birds protected under the MBTA and CFGC. Special-status bats would be confined to the trees within the coast live oak woodland portions of the Study Area. Because no trees will be removed as part of the Proposed Project, no impacts will occur to such and there are no further actions recommended for special-status bats. The following measures are recommended to avoid or otherwise minimize potential impacts to all protected birds/.

All Bird Species (including non-special-status): In addition to the one special-status bird species discussed above (white-tailed kite), various non-status bird species with baseline protections under the MBTA and CFGC may use vegetation within the Project Areas for nesting. Pre-construction surveys are recommended to ensure that the implementation of the Proposed Project would not impact any nesting birds:

Recommendation 2: Initial ground disturbance should occur from August 16 to January 31, outside of the general bird nesting season. If work during this time is not feasible, a pre-construction nesting bird survey should be performed by a qualified biologist no more than 14 days prior to the initiation of tree removal or ground disturbance is recommended. The survey should cover the Project Area (including tree removal areas) and surrounding areas within 500 feet. If active bird nests are found during the survey, an appropriate no-disturbance buffer should be established by the qualified biologist. Once it is determined that the young have fledged (left the nest) or the nest otherwise becomes inactive (e.g., due to predation), the buffer may be removed, and work may be initiated within the buffer.

### 6.2.3 Critical Habitat, Essential Fish Habitat, and Wildlife Corridors

As noted above, the Study Area is not within a Natural Landscape Block but is situated within a broad Essential Connectivity Area. The Proposed Project is sited entirely within developed areas and (disturbed) non-native grassland. There are no proposed wildlife fences as part of this Proposed Project. Wildlife will be able to continue their localized movement unencumbered around

the new reservoir and spoils areas. Therefore, the Proposed Project will not incur impacts to wildlife movement and there are no further actions recommended for such.

## 7.0 REFERENCES

- Baldwin, B.G., D.H. Goldman, D.J. Keil, R. Patterson, T.J. Rosatti, and D.H. Wilken (eds.). 2012. The Jepson Manual: Vascular Plants of California, 2<sup>nd</sup> Edition. University of California Press, Berkeley, CA. 1568 pp.
- California Department of Fish and Game (CDFG). 1994. A Field Guide to Lake and Streambed Alteration Agreements, Sections 1600-1607. Environmental Service Division, California Department of Fish and Game, Sacramento, CA.
- (CDFG). 2010. List of Vegetation Alliances and Associations. Vegetation Classification and Mapping Program, California Department of Fish and Game, Sacramento, CA. September 2010.
- California Department of Fish and Wildlife (CDFW). 2024a. California Natural Diversity Database (CNDDB), Wildlife and Habitat Data Analysis Branch. Sacramento, CA. Accessed: January 2024.
- (CDFW). 2024b. Biogeographic Information and Observation System (BIOS). Wildlife and Habitat Data Analysis Branch. Sacramento. Available online: <http://https://wildlife.ca.gov/Data/BIOS>. Accessed: January 2024.
- (CDFW). 2018a. California Natural Community List. Vegetation Classification and Mapping Program, California Department of Fish and Game, Sacramento, CA. January 24, 2018.
- (CDFW). 2018b. Protocols for Surveying and Evaluating Impacts to Special-status Native Plant Populations and Natural Communities. California Natural Resources Agency, California Department of Fish and Game. March 20, 2018.
- California Department of Transportation (CalTrans). 2010. California Essential Habitat Connectivity Project. Available at: <https://www.wildlife.ca.gov/conservation/planning>. Accessed: January 2024.
- California Invasive Plant Council (Cal-IPC). 2006. California Invasive Plant Inventory: Cal-IPC Publication 2006-2. California Invasive Plant Council, Berkeley, CA. Available online: <http://www.cal-ipc.org/ip/inventory/index.php>. Accessed: January 2024.
- California Native Plant Society (CNPS). 2001. CNPS Botanical Survey Guidelines. June 2, 2001.
- (CNPS). 2024a. Online Inventory of Rare, Threatened, and Endangered Plants of California. Available at: <http://www.rareplants.cnps.org/>. Accessed: January 2024.
- (CNPS). 2024b. A Manual of California Vegetation Online. Available at: <http://vegetation.cnps.org/>. Accessed: January 2024.
- California Soil Resources Lab (CSRL). 2024. Online Soil Survey. Available at: <http://casoilresource.lawr.ucdavis.edu/drupal/> Accessed: January 2024.

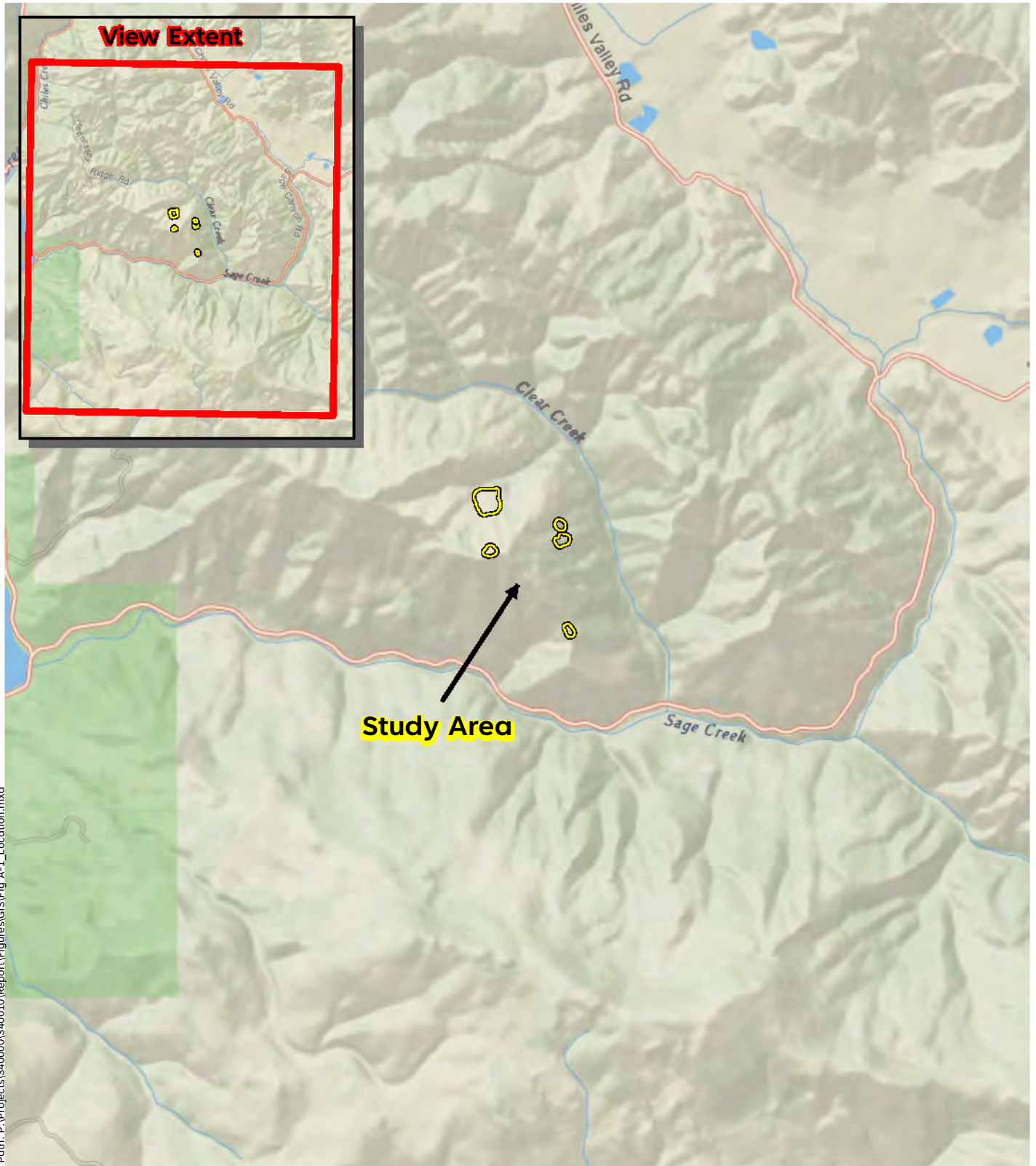
- Cogswell, H. L. 1977. Water birds of California. Univ. California Press, Berkeley. 399pp.
- Consortium of California Herbaria (CCH). 2024. Data provided by the participants of the Consortium of California Herbaria. Available at: <http://ucjeps.berkeley.edu/consortium>. Accessed: January 2024.
- Dunk, J.R. 1995. White-tailed Kite (*Elanus leucurus*). In The Birds of North America, No. 178 (A. Poole and F. Gill, eds.). The Academy of Natural Sciences, Philadelphia, and The American Ornithologists' Union, Washington, D.C.
- eBird. 2024. eBird: An online database of bird distribution and abundance [web application]. eBird, Ithaca, New York. Available at: <http://www.ebird.org>. Accessed: January 2024.
- Jepson Herbarium. Jepson Flora Project (eFlora). 2024. Jepson eFlora Online at: <http://ucjeps.berkeley.edu/IJM.html>. Accessed: January 2024.
- Environmental Laboratory. 1987. Corps of Engineers Wetlands Delineation Manual. Department of the Army, Waterways Experiment Station, Vicksburg, Mississippi 39180-0631.
- Google Earth. 2024. Silverado Trail area, Napa County area. Image dates: 1993-2020. Accessed: January 2024.
- Historical Aerials. 2024. Available at: <http://historicalaerials.com>. Accessed: January 2024.
- Holland, R. 1986. Preliminary Descriptions of the Terrestrial Natural Communities of California. California Department of Fish and Game, Sacramento, CA. 156 pp.
- Lichvar, R.W., D.L. Banks, W.N. Kirchner, and N.C. Melvin. 2016. The National Wetland Plant List: 2016 wetland ratings. *Phytoneuron* 2016-30: 1-17.
- Martin, J.W. and M.K. Wicksten. Review and Redescription of the Freshwater Atyid Shrimp Genus *Syncaris* Holmes, 1900, in California. *Journal of Crustacean Biology* 24(3): 447-462.
- Napa County. 2005. Napa County Baseline Data Report. Available at: <http://www.co.napa.us/gov/>.
- Napa County. 2008. Napa County General Plan. June 2, 2008. Available at: <http://www.co.napa.ca.us/GOV/Departments/>.
- Napa County. 2016a. Attachment B: Guidelines for Preparing Biological Resources Reconnaissance Surveys. Planning, Building, and Environmental Services. August 2016.
- Napa County. 2016b. Attachment C: Guidelines for Preparing Special-status Plant Studies. Planning, Building, and Environmental Services. August 2016.
- Napa County. 2024. Napa County Public Browser (Online Map). Available at: <http://gis.napa.ca.gov/> Accessed: January 2024.
- National Marine Fisheries Service (NMFS). 2024. Essential Fish Habitat Mapper. Available at: <https://www.habitat.noaa.gov/protection/efh/efhmapper/>. Accessed: January 2024.

- NatureServe. 2024. NatureServe Explorer: NatureServe Conservation Status. Available at: <http://www.natureserve.org/explorer/ranking#relationship>. Accessed: January 2024.
- Palmer, R. S., ed. 1962. Handbook of North American birds. Vol. 1. Yale University Press, New Haven, CT. 567pp.
- San Francisco Estuary Institute (SFEI). 2024. California Aquatic Resource Inventory (CARI). Available at: <http://www.sfei.org/cari#sthash.Mzz93W9i.dpbs>. Accessed: January 2024.
- Sawyer, J.O., T. Keeler-Wolf, and J.M. Evens. 2009. A Manual of California Vegetation, 2<sup>nd</sup> Edition. California Native Plant Society in collaboration with California Department of Fish and Game. Sacramento, CA. 1300 pp.
- Shuford, W.D. and Gardali, T., eds. 2008. California Bird Species of Special Concern: A ranked assessment of species, subspecies, and distinct populations of birds of immediate conservation concern in California. Studies of Western Birds 1. Western Field Ornithologists, Camarillo, California, and California Department of Fish and Game, Sacramento.
- Smith, A., ed. 2003. Breeding Birds of Napa County, California. Napa-Solano Audubon Society, Vallejo, California. 199 pp.
- Stebbins, RC. 2003. A Field Guide to Western Reptiles and Amphibians, Third Edition. Houghton Mifflin Company, Boston, MA and New York, NY.
- Thomson, R.C., A.N. Wright, and H.B. Shaffer. 2016. California Amphibian and Reptile Species of Special Concern. Co-published by the California Department of Fish and Wildlife and University of California Press. Oakland, California.
- Thorne, J., Kennedy, J., Quinn, J., McCoy, M., Keeler-Wolfe, T. A Vegetation Map of Napa County Using the Manual of California Vegetation Classification and its Comparison to Other Digital Vegetation Maps. Information Center for the Environment (ICE). University of California, Davis. 2004.
- U.S. Army Corps of Engineers (Corps). 2008. Regional Supplement to the Corps of Engineers Wetland Delineation Manual: Arid West Region (Version 2.0). U.S. Army Corps of Engineers, Engineer Research and Development Center, Vicksburg, MS. September 28, 2008.
- U.S. Department of Agriculture (USDA), Soil Conservation Service (SCS). 1978. Soil Survey of Napa County, California. In cooperation with the University of California Agricultural Experiment Station.
- (USDA), Natural Resources Conservation Service (NRCS). 2014. Official List of California Hydric Soils.
- (USDA), (NRCS). 2017. Field Indicators of Hydric Soils in the United States, Version 8.1. L.M. Vasilas, G.W. Hurt, and J.F. Berkowitz (eds.). In cooperation with the National Technical Committee for Hydric Soils.

- (USDA), (NRCS). 2024. Climate Information for Napa County in the State of California. Available at: <http://www.wcc.nrcs.usda.gov/>. Accessed: January 2024.
- U.S. Fish and Wildlife Service (USFWS). 2024a. National Wetlands Inventory. Available at: <http://www.fws.gov/wetlands/index.html>. Accessed: January 2024.
- (USFWS). 2024b. Information for Planning and Consultation. Available online at: <https://ecos.fws.gov/ipac/>. Accessed: January 2024.
- (USFWS). 2024c. Threatened and Endangered Species Active Critical Habitat Report. Available at: <https://ecos.fws.gov/ecp/report/table/critical-habitat.html>. Accessed: January 2024.
- U.S. Geological Survey (USGS). 2015. Yountville, California 7.5-minute quadrangle topographic map.
- Vennesland, R.G. and R.W. Butler. 2011. Great Blue Heron (*Ardea herodias*), The Birds of North America Online (A. Poole, Ed.). Ithaca: Cornell Lab of Ornithology; Retrieved from the Birds of North America Online: <http://bna.birds.cornell.edu/bna/species/025>.
- Western Bat Working Group (WBWG). 2024. Species Accounts. Available at: [http://www.wbwg.org/speciesinfo/species\\_accounts/species\\_accounts.html](http://www.wbwg.org/speciesinfo/species_accounts/species_accounts.html). Accessed: January 2024.

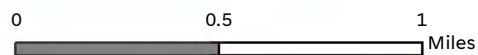
## Appendix A

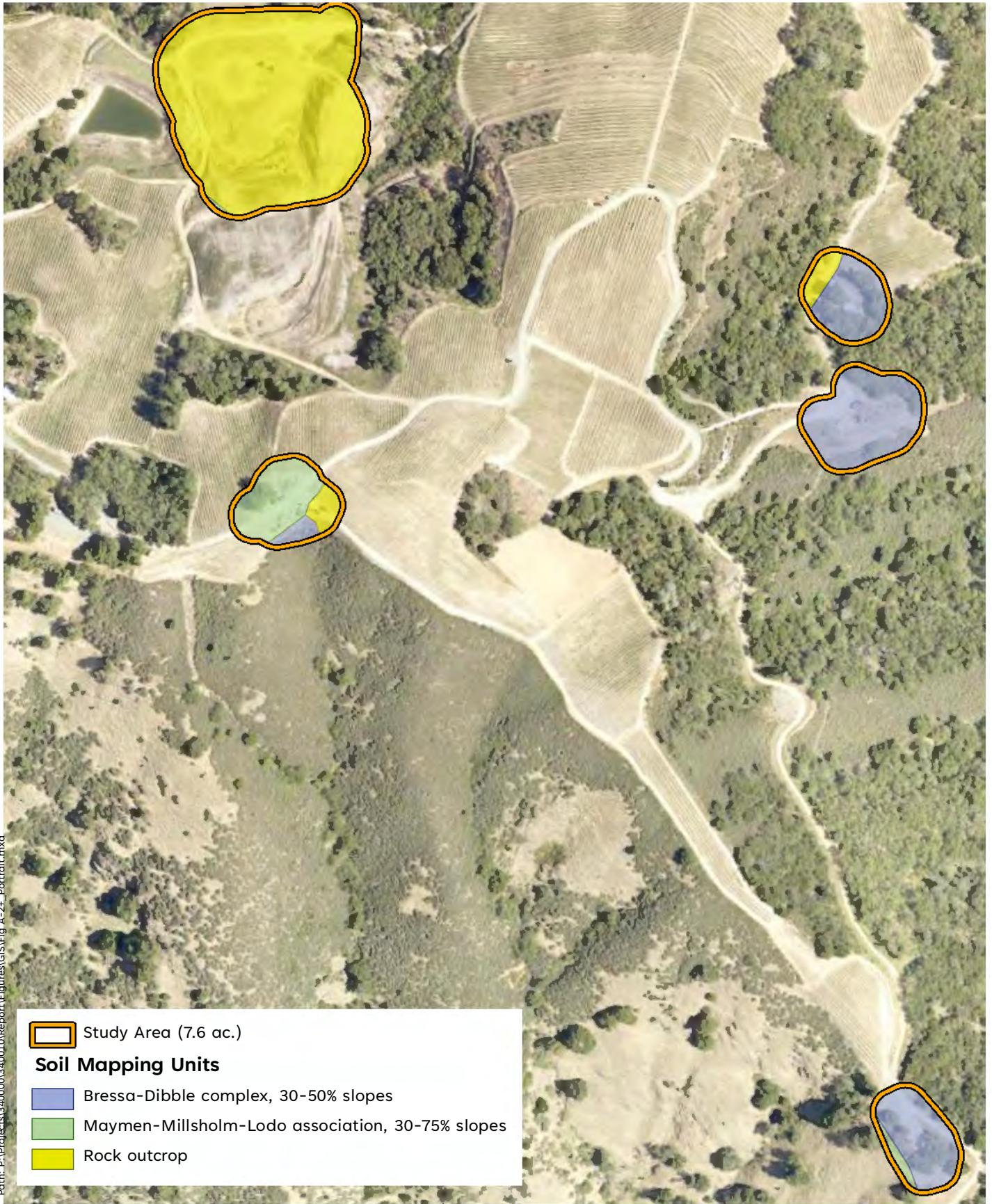
### Figures



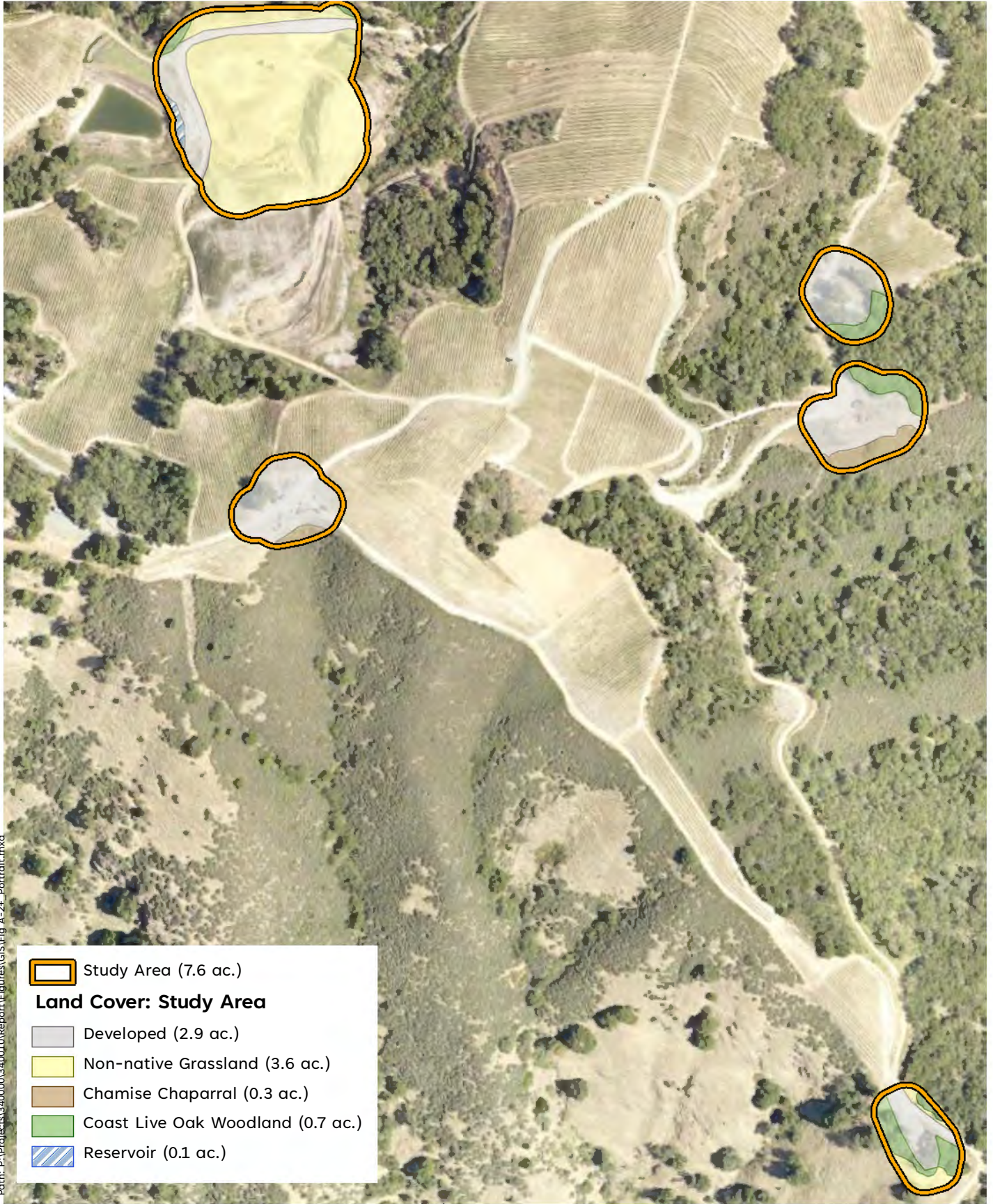
**Figure A-1. Study Area Location**

Diamond Peak Vineyard  
Sonoma County, CA



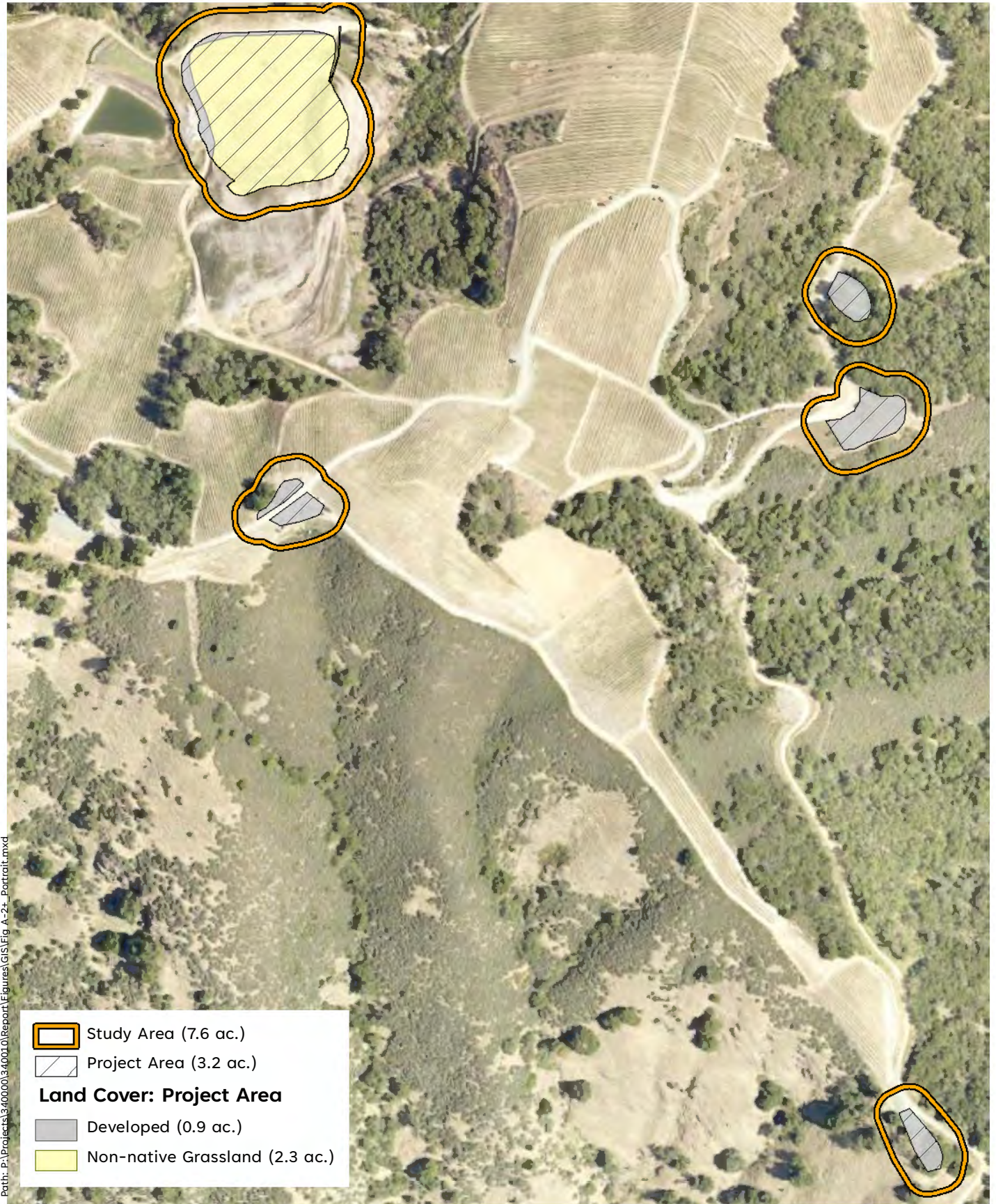


**Figure A-2. Soil Mapping Units**



Sources: DigitalGlobe 2016 Aerial, WRA | Prepared By: Arthur, 1/12/2024

**Figure A-3. Land Cover: Study Area**



**Figure A-4. Land Cover: Project Area**

## **Appendix B**

### **Species Observed in the Study Area**

Table B-1. Plant species observed in the Study Area: January 11, 2024

FAMILY	SCIENTIFIC NAME	COMMON NAME	LIFE FORM	ORIGIN	RARE STATUS <sup>1</sup>	INVASIVE STATUS <sup>2</sup>	WETLAND INDICATOR <sup>3</sup>
Anacardiaceae	<i>Toxicodendron diversilobum</i>	poison oak	deciduous shrub	native	--	--	FACU
Apiaceae	<i>Daucus carota</i>	Queen Anne's lace	perennial forb	non-native	--	assessed	UPL
Apiaceae	<i>Sanicula crassicaulis</i>	Pacific sanicle	perennial forb	native	--	--	NL
Apiaceae	<i>Torilis arvensis</i>	hedge parsley	annual forb	non-native	--	moderate	NL
Asteraceae	<i>Baccharis pilularis ssp. consanguinea</i>	coyote brush	evergreen shrub	native	--	--	NL
Asteraceae	<i>Carduus pycnocephalus</i>	Italian thistle	annual forb	non-native	--	moderate	NL
Asteraceae	<i>Centaurea solstitialis</i>	yellow star thistle	annual forb	non-native	--	high	NL
Asteraceae	<i>Helminthotheca echioides</i>	bristly ox-tongue	perennial forb	non-native	--	limited	FAC
Asteraceae	<i>Hypochaeris radicata</i>	rough cat's-ear	perennial forb	non-native	--	moderate	FACU
Asteraceae	<i>Lactuca serriola</i>	prickly lettuce	annual forb	non-native	--	assessed	FACU
Asteraceae	<i>Pseudognaphalium californicum</i>	ladies' tobacco	perennial forb	native	--	--	NL
Asteraceae	<i>Sonchus asper</i>	prickly sow thistle	annual forb	non-native	--	assessed	FAC
Brassicaceae	<i>Brassica nigra</i>	black mustard	annual forb	non-native	--	moderate	NL
Brassicaceae	<i>Cardamine californica</i>	milk maids	perennial forb	native	--	--	NL
Brassicaceae	<i>Raphanus sativus</i>	wild radish	perennial forb	non-native	--	limited	NL
Caryophyllaceae	<i>Stellaria media</i>	common chickweed	annual forb	non-native	--	--	FACU
Cupressaceae	<i>Sequoia sempervirens</i>	coast redwood	evergreen tree	native	--	--	NL
Dryopteridaceae	<i>Dryopteris arguta</i>	California wood fern	perennial fern	native	--	--	NL
Ericaceae	<i>Arbutus menziesii</i>	Pacific madrone	evergreen tree	native	--	--	NL
Ericaceae	<i>Arctostaphylos manzanita ssp. manzanita</i>	common manzanita	evergreen shrub	native	--	--	NL
Fabaceae	<i>Lathyrus vestitus var. vestitus</i>	common Pacific pea	perennial forb	native	--	--	NL
Fabaceae	<i>Medicago polymorpha</i>	bur medic	annual forb	non-native	--	limited	FACU
Fabaceae	<i>Trifolium hirtum</i>	rose clover	annual forb	non-native	--	moderate	NL
Fabaceae	<i>Trifolium subterraneum</i>	subterranean clover	annual forb	non-native	--	--	NL
Fabaceae	<i>Vicia sativa</i>	common vetch	annual forb	non-native	--	--	FACU
Fabaceae	<i>Vicia villosa</i>	woolly-pod vetch	annual forb	non-native	--	--	NL

FAMILY	SCIENTIFIC NAME	COMMON NAME	LIFE FORM	ORIGIN	RARE STATUS <sup>1</sup>	INVASIVE STATUS <sup>2</sup>	WETLAND INDICATOR <sup>3</sup>
Fagaceae	<i>Quercus agrifolia</i>	coast live oak	evergreen tree	native	--	--	NL
Fagaceae	<i>Quercus wislizeni</i> var. <i>wislizeni</i>	interior live oak	evergreen tree	native	--	--	NL
Geraniaceae	<i>Erodium botrys</i>	longbeak stork's bill	annual forb	non-native	--	assessed	FACU
Geraniaceae	<i>Erodium cicutarium</i>	redstem stork's bill	annual forb	non-native	--	limited	NL
Geraniaceae	<i>Geranium dissectum</i>	cutleaf geranium	annual forb	non-native	--	moderate	NL
Lauraceae	<i>Umbellularia californica</i>	California bay	evergreen tree	native	--	--	FAC
Malvaceae	<i>Malva nicaeensis</i>	bull mallow	annual forb	non-native	--	--	NL
Phrymaceae	<i>Diplacus aurantiacus</i>	sticky monkey	evergreen shrub	native	--	--	NL
Plantaginaceae	<i>Plantago lanceolata</i>	English plantain	perennial forb	non-native	--	limited	FAC
Poaceae	<i>Avena sativa</i>	cultivated oats	perennial graminoid	non-native	--	--	NL
Poaceae	<i>Bromus diandrus</i>	rip-gut brome	annual graminoid	non-native	--	moderate	NL
Poaceae	<i>Bromus hordeaceus</i>	soft chess	annual graminoid	non-native	--	limited	FACU
Poaceae	<i>Cynosurus echinatus</i>	dogtail grass	annual graminoid	non-native	--	moderate	NL
Poaceae	<i>Elymus glaucus</i>	blue wildrye	perennial graminoid	native	--	--	FACU
Poaceae	<i>Festuca perennis</i>	Italian rye grass	annual graminoid	non-native	--	moderate	FAC
Poaceae	<i>Poa annua</i>	annual bluegrass	annual graminoid	non-native	--	--	FAC
Poaceae	<i>Triticum aestivum</i>	bread wheat	annual graminoid	non-native	--	--	NL
Primulaceae	<i>Primula hendersonii</i>	shooting stars	perennial forb	native	--	--	NL
Pteridaceae	<i>Pentagramma triangularis</i>	gold back fern	perennial fern	native	--	--	NL
Ranunculaceae	<i>Ranunculus occidentalis</i>	western buttercup	perennial forb	native	--	--	FAC
Rhamnaceae	<i>Frangula californica</i> ssp. <i>californica</i>	California coffeeberry	evergreen shrub	native	--	--	NL
Rosaceae	<i>Cercocarpus betuloides</i>	mountain mahogany	evergreen shrub	native	--	--	NL
Rosaceae	<i>Heteromeles arbutifolia</i>	toyon	evergreen shrub	native	--	--	NL
Rubiaceae	<i>Galium parisiense</i>	wall bedstraw	annual forb	non-native	--	--	UPL
Rubiaceae	<i>Galium porrigens</i>	graceful bedstraw	perennial forb	native	--	--	NL
Vitaceae	<i>Vitis vinifera</i>	wine grape	deciduous vine	non-native	--	--	NL

All species identified using the *Jepson Manual, 2<sup>nd</sup> Edition* (Baldwin et al. 2012), *The Jepson Flora Project* (eFlora 2023), and *A Flora of Napa County* (Ruygt 2020); nomenclature follows *The Jepson Flora Project* (eFlora 2024) unless otherwise noted

Sp.: “species”, intended to indicate that the observer was confident in the identity of the genus but uncertain which species

Cf.: “confer” or “compared with”, intended to indicate a species appeared to the observer to be specific, but was not identified based on diagnostic characters

<sup>1</sup>Rare Status: The CNPS Inventory of Rare and Endangered Plants (CNPS 2023a)

FE:	Federal Endangered
FT:	Federal Threatened
SE:	State Endangered
ST:	State Threatened
SR:	State Rare
LR	Locally Rare
CRPR 1A:	Plants presumed extirpated in California and either rare or extinct elsewhere
CRPR 1B:	Plants rare, threatened, or endangered in California and elsewhere
CRPR 2A:	Plants presumed extirpated in California, but more common elsewhere
CRPR 2B:	Plants rare, threatened, or endangered in California, but more common elsewhere
CRPR 3:	Plants about which we need more information – a review list
CRPR 4:	Plants of limited distribution – a watch list

<sup>2</sup>Invasive Status: California Invasive Plant Inventory (Cal-IPC 2006)

High:	Severe ecological impacts; high rates of dispersal and establishment; most are widely distributed ecologically.
Moderate:	Substantial and apparent ecological impacts; moderate-high rates of dispersal, establishment dependent on disturbance; limited moderate distribution ecologically
Limited:	Minor or not well documented ecological impacts; low-moderate rate of invasiveness; limited distribution ecologically
Assessed:	Assessed by Cal-IPC and determined to not be an existing current threat

<sup>3</sup>Wetland Status: National List of Plant Species that Occur in Wetlands, Arid West Region (Corps 2018)

OBL:	Almost always a hydrophyte, rarely in uplands
FACW:	Usually a hydrophyte, but occasionally found in uplands
FAC:	Commonly either a hydrophyte or non-hydrophyte
FACU:	Occasionally a hydrophyte, but usually found in uplands
UPL:	Rarely a hydrophyte, almost always in uplands
NL:	Rarely a hydrophyte, almost always in uplands
NI:	No information; not factored during wetland delineation

Table B-2. Wildlife species observed in and around the Study Area: January 11, 2024

SCIENTIFIC NAME	COMMON NAME
<b>Mammals</b>	
<i>Canus latrans</i>	coyote
<i>Odocoileus hemionus columbianus</i>	black-tailed deer
<b>Birds</b>	
<i>Aphelocoma californica</i>	California scrub jay
<i>Cathartes aura</i>	turkey vulture
<i>Colaptes auratus</i>	northern flicker
<i>Corvus brachyrhynchos</i>	American crow
<i>Haemorhous mexicanus</i>	house finch
<i>Junco hyemalis</i>	dark-eyed junco
<i>Melanerpes formicivorus</i>	acorn woodpecker
<i>Patagioenas fasciata</i>	band-tailed pigeon
<i>Psaltriparus minimus</i>	bushtit

## **Appendix C**

### **Potential for Special-status Species to Occur in the Study Area**

Table C. Potential for Special-status Species to Occur in the Study Area. List compiled from the CDFW BIOS database (CDFW 2024a), USFWS IPaC Report (USFWS 2024), and CNPS Electronic Inventory (CNPS 2024a) searches. For plants, the Aetna Springs, Walter Springs, Brooks, St. Helena, Chiles Valley, Lake Berryessa, Rutherford, Yountville, and Capell Valley USGS 7.5' quadrangles were included in the search. For wildlife, the entirety of Napa County was considered.

SPECIES	STATUS*	HABITAT REQUIREMENTS	POTENTIAL TO OCCUR IN THE STUDY AREA	RESULTS AND RECOMMENDATIONS
<b>PLANTS</b>				
<i>Amorpha californica</i> var. <i>napensis</i> Napa false indigo	CRPR 1B	Openings in broadleaf upland forest, chaparral, cismontane woodland. Elevation range: 395 – 6560 feet. Blooms: April – July.	<b>Moderate Potential.</b> The Study Area contains small portions of woodlands that may support this species.	<b>Presence Unknown without Impact.</b> Although this species may be present, it would not occur within the Project Area’s footprint; therefore, no impacts will occur. No further actions are recommended for this species.
<i>Amsinckia lunaris</i> bent-flowered fiddleneck	CRPR 1B	Cismontane woodland, valley and foothill grassland, coastal bluff scrub; situated on rocky soils. Elevation range: 10 – 1625 feet. Blooms: March – June.	<b>No Potential.</b> The Study Area does not contain intact, native/naturalized grassland or the woodland types (blue oak woodland) favored by this species.	<b>Not Present.</b> No further actions are recommended for this species.
<i>Antirrhinum virga</i> twig-like snapdragon	CRPR 4	Chaparral, lower montane coniferous forest; located on rocky openings often derived from serpentine; serpentine indicator: SI. Elevation range: 325 – 6550 feet. Blooms: June – July.	<b>Moderate Potential.</b> The Study Area contains chamise chaparral that may support this species.	<b>Presence Unknown without Impact.</b> Although this species may be present, it would not occur within the Project Area’s footprint; therefore, no impacts will occur. No further actions are recommended for this species.

SPECIES	STATUS*	HABITAT REQUIREMENTS	POTENTIAL TO OCCUR IN THE STUDY AREA	RESULTS AND RECOMMENDATIONS
<i>Aphyllon validum</i> ssp. <i>howellii</i> Howell's broomrape	CRPR 4	Chaparral; located on serpentine or volcanic substrate. Elevation range: 585 – 5655 feet. Blooms: June – September.	<b>Moderate Potential.</b> The Study Area contains chamise chaparral that may support this species.	<b>Presence Unknown without Impact.</b> Although this species may be present, it would not occur within the Project Area's footprint; therefore, no impacts will occur. No further actions are recommended for this species.
<i>Arctostaphylos stanfordiana</i> ssp. <i>decumbens</i> Rincon manzanita	CRPR 1B	Chaparral, cismontane woodland; highly restricted to red rhyolite soils. Elevation range: 245 – 1215 feet. Blooms: February – April.	<b>No Potential.</b> The Study Area does not contain the chaparral (volcanic) or woodland types favored by this species to support this species.	<b>Not Present.</b> No further actions are recommended for this species.
<i>Astragalus breweri</i> Brewer's milk-vetch	CRPR 4	Chaparral, cismontane woodland, meadows and seeps, valley and foothill grassland; located on open, gravelly serpentine or volcanic substrate; serpentine indicator: SI. Elevation range: 290 – 2375 feet. Blooms: April – June.	<b>No Potential.</b> The Study Area does not contain serpentine habitats to support this species.	<b>Not Present.</b> No further actions are recommended for this species.
<i>Astragalus claranus</i> Clara Hunt's milk-vetch	FE; ST; CRPR 1B	Cismontane woodland, valley and foothill grassland, chaparral; on open grassy hillsides, especially exposed shoulders with thin, volcanic or serpentine clay soils; serpentine indicator: SI. Elevation range: 245 – 900 feet. Blooms: March – May.	<b>No Potential.</b> The Study Area does not contain volcanic or serpentine substrate to support this species.	<b>Not Present.</b> No further actions are recommended for this species.

SPECIES	STATUS*	HABITAT REQUIREMENTS	POTENTIAL TO OCCUR IN THE STUDY AREA	RESULTS AND RECOMMENDATIONS
<i>Astragalus clevelandii</i> Cleveland's milk-vetch	CRPR 4	Chaparral, cismontane woodland, riparian forest; located on serpentine seeps; serpentine indicator: SE. Elevation range: 650 – 4875 feet. Blooms: June – September.	<b>No Potential.</b> The Study Area does not contain serpentine substrate to support this species.	<b>Not Present.</b> No further actions are recommended for this species.
<i>Astragalus rattanii</i> var. <i>jepsonianus</i> Jepson's milk-vetch	CRPR 1B	Chaparral, cismontane woodland, valley and foothill grassland; typically situated on serpentine substrate in openings or grasslands; often on roadsides; serpentine indicator: BE/SI. Elevation range: 955 – 2275 feet. Blooms: March – June.	<b>No Potential.</b> The Study Area does not contain serpentine substrate to support this species.	<b>Not Present.</b> No further actions are recommended for this species.
<i>Brodiaea leptandra</i> narrow-anthered brodiaea	CRPR 1B	Broadleaf upland forest, chaparral, lower montane coniferous forest; situated on gravelly soils derived from volcanics, particularly rhyolitic tuff, sometimes serpentine; serpentine indicator: WI. Elevation range: 360 – 3000 feet. Blooms: May – July.	<b>No Potential.</b> The Study Area does not contain volcanic (rhyolitic) substrate to support this species.	<b>Not Present.</b> No further actions are recommended for this species.
<i>Calamagrostis ophitidis</i> serpentine reed grass	CRPR 4	Chaparral, lower montane coniferous forest, meadows and seeps, valley and foothill grassland; located in openings, often north-facing, underlain by rocky serpentine substrate; serpentine indicator: SE. Elevation range: 290 – 3465 feet. Blooms: April – July.	<b>No Potential.</b> The Study Area does not contain serpentine substrate to support this species.	<b>Not Present.</b> No further actions are recommended for this species.

SPECIES	STATUS*	HABITAT REQUIREMENTS	POTENTIAL TO OCCUR IN THE STUDY AREA	RESULTS AND RECOMMENDATIONS
<p><i>Calandrinia breweri</i> Brewer's Calandrinia</p>	<p>CRPR 4</p>	<p>Chaparral, coastal scrub; located on sandy or loamy substrate in areas often recently disturbed or burned. Elevation range: 30 – 3965 feet. Blooms: March – June.</p>	<p><b>Moderate Potential.</b> The Study Area contains chamise chaparral that may support this species.</p>	<p><b>Presence Unknown without Impact.</b> Although this species may be present, it would not occur within the Project Area's footprint; therefore, no impacts will occur. No further actions are recommended for this species.</p>
<p><i>Calochortus uniflorus</i> large-flowered mariposa lily</p>	<p>CRPR 4, LR</p>	<p>Coastal prairie, coastal scrub, meadows and seeps, North Coast coniferous forest; infrequently situated on serpentine substrate; serpentine indicator: WI. Elevation range: 30 – 3480 feet. Blooms: April – June.</p>	<p><b>No Potential.</b> The Study Area does not contain forest, scrub, prairie, or intact (native/naturalized) grassland habitat to support this species.</p>	<p><b>Not Present.</b> No further actions are recommended for this species.</p>
<p><i>Calystegia collina</i> ssp. <i>oxyphylla</i> Mt. Saint Helena morning-glory</p>	<p>CRPR 4</p>	<p>Chaparral; located on serpentine barrens, slopes, and hillsides; serpentine indicator: SE. Elevation range: 815 – 3315 feet. Blooms: April – June.</p>	<p><b>No Potential.</b> The Study Area does not contain serpentine substrate to support this species.</p>	<p><b>Not Present.</b> No further actions are recommended for this species.</p>
<p><i>Castilleja ambigua</i> var. <i>ambigua</i> Johnny-nip</p>	<p>CRPR 4</p>	<p>Coastal bluff scrub, coastal prairie, coastal scrub, marshes and swamps, valley and foothill grassland, vernal pool margins. Elevation range: 0 – 1415 feet. Blooms: March – August.</p>	<p><b>No Potential.</b> The Study Area does not contain scrub, prairie, or intact (native/naturalized) grassland habitat to support this species.</p>	<p><b>Not Present.</b> No further actions are recommended for this species.</p>

SPECIES	STATUS*	HABITAT REQUIREMENTS	POTENTIAL TO OCCUR IN THE STUDY AREA	RESULTS AND RECOMMENDATIONS
<i>Castilleja ambigua</i> var. <i>meadii</i> mead's owl's-clover	CRPR 1B	Meadows and seeps, vernal pools; located in mesic areas or wetlands underlain by gravelly clay soils derived from volcanics. Elevation range: 1460 – 1545 feet. Blooms: April – May.	<b>No Potential.</b> The Study Area does not contain mesic grassland, vernal pool, or similar seasonal wetland habitat to support this species.	<b>Not Present.</b> No further actions are recommended for this species.
<i>Ceanothus confusus</i> Rincon Ridge ceanothus	CRPR 1B	Closed-cone coniferous forest, chaparral, cismontane woodland; known from volcanic and serpentine substrate; typically situated on dry shrubby slopes; serpentine indicator: WI/IN. Elevation range: 245 – 3495 feet. Blooms: February – April.	<b>Unlikely.</b> The Study Area does not contain the chaparral, woodland, or forest types associated with this species.	<b>Presumed Absent.</b> No further actions are recommended for this species.
<i>Ceanothus divergens</i> <i>Calistoga ceanothus</i>	CRPR 1B	Chaparral, cismontane woodland; on rocky, serpentine sites; serpentine indicator: WI. Elevation range: 560 – 3115 feet. Blooms: February – March.	<b>Unlikely.</b> The Study Area does not contain the chaparral, woodland, or forest types associated with this species.	<b>Presumed Absent.</b> No further actions are recommended for this species.
<i>Ceanothus purpureus</i> holly-leaved ceanothus	CRPR 1B	Chaparral, cismontane woodland; located on rocky, volcanic slopes. Elevation range: 395 – 3000 feet. Blooms: February – June.	<b>Unlikely.</b> The Study Area does not contain the chaparral, woodland, or forest types associated with this species.	<b>Presumed Absent.</b> No further actions are recommended for this species.
<i>Ceanothus sonomensis</i> Sonoma ceanothus	CRPR 1B	Chaparral; located on sandy serpentine or volcanic substrates; serpentine indicator: WI/IN. Elevation range: 705 – 2625 feet. Blooms: February – April.	<b>Unlikely.</b> The Study Area does not contain the chaparral, woodland, or forest types associated with this species.	<b>Presumed Absent.</b> No further actions are recommended for this species.

SPECIES	STATUS*	HABITAT REQUIREMENTS	POTENTIAL TO OCCUR IN THE STUDY AREA	RESULTS AND RECOMMENDATIONS
<i>Centromadia parryi</i> ssp. <i>parryi</i> pappose tarplant	CRPR 1B	Coastal prairie, meadows and seeps, coastal salt marsh, valley and foothill grassland; in vernal mesic sites, often with alkali substrate. Elevation range: 5 – 1380 feet. Blooms: May – November.	<b>No Potential.</b> The Study Area does not contain alkali grassland habitat to support this species.	<b>Not Present.</b> No further actions are recommended for this species.
<i>Clarkia breweri</i> Brewer's clarkia	CRPR 4	Chaparral, cismontane woodland, coastal scrub; frequently on serpentine substrate; serpentine indicator: BE/SI. Elevation range: 695 – 3625 feet. Blooms: April – June.	<b>No Potential.</b> The Study Area does not contain serpentine substrate to support this species.	<b>Not Present.</b> No further actions are recommended for this species.
<i>Clarkia gracilis</i> ssp. <i>tracyi</i> Tracy's clarkia	CRPR 4	Chaparral; located in openings and situated on substrates often derived from serpentine; serpentine indicator: BE. Elevation range: 210 – 2115 feet. Blooms: April – July.	<b>No Potential.</b> The Study Area does not contain serpentine substrate to support this species.	<b>Not Present.</b> No further actions are recommended for this species.
<i>Collomia diversifolia</i> serpentine collomia	CRPR 4	Chaparral, cismontane woodland; situated on rocky to gravelly serpentine substrates; serpentine indicator: SE. Elevation range: 975 – 1950 feet. Blooms: May – June.	<b>No Potential.</b> The Study Area does not contain serpentine substrate to support this species.	<b>Not Present.</b> No further actions are recommended for this species.
<i>Cryptantha rostellata</i> red-stemmed cryptantha	CRPR 4	Cismontane woodland, valley and foothill grassland; found on gravelly, volcanic soils in openings and roadsides. Elevation range: 120 – 2400 feet. Blooms: April-June.	<b>No Potential.</b> The Study Area does not contain volcanic substrate to support this species.	<b>Not Present.</b> No further actions are recommended for this species.

SPECIES	STATUS*	HABITAT REQUIREMENTS	POTENTIAL TO OCCUR IN THE STUDY AREA	RESULTS AND RECOMMENDATIONS
<i>Delphinium uliginosum</i> swamp larkspur	CRPR 4	Chaparral, valley and foothill grassland; located in seeps and wet meadows underlain by serpentine substrate; serpentine indicator: SE. Elevation range: 1105 – 1985 feet. Blooms: May – June.	<b>No Potential.</b> The Study Area does not contain serpentine substrate to support this species.	<b>Not Present.</b> No further actions are recommended for this species.
<i>Downingia pusilla</i> dwarf downingia	CRPR 2B	Valley and foothill grassland, vernal pools; located in mesic grassy sites, pool and lake margins. Elevation range: 3 – 1450 feet. Blooms: March – May.	<b>No Potential.</b> The Study Area does not contain vernal pool or other seasonal wetlands to support this species.	<b>Not Present.</b> No further actions are recommended for this species.
<i>Erigeron biolettii</i> Streamside daisy	CRPR 3	Broadleaf upland forest, cismontane woodland, North Coast coniferous forest; on rocky, mesic. Elevation range: 95 – 3610 feet. Blooms: June – October.	<b>Moderate Potential.</b> The Study Area contains small portions of woodlands that may support this species.	<b>Presence Unknown without Impact.</b> Although this species may be present, it would not occur within the Project Area's footprint; therefore, no impacts will occur. No further actions are recommended for this species.
<i>Erigeron greenei</i> Greene's narrow-leaved daisy	CRPR 1B	Chaparral; located on volcanic or serpentine substrate. Elevation range: 260 – 3270 feet. Blooms: May – September.	<b>No Potential.</b> The Study Area does not contain volcanic or serpentine chaparral to support this species.	<b>Not Present.</b> No further actions are recommended for this species.
<i>Eryngium jepsonii</i> Jepson's coyote thistle	CRPR 1B	Valley and foothill grassland, vernal pools; situated on clay substrate that is vernaly saturated. Elevation range: 10 – 975 feet. Blooms: April – August.	<b>No Potential.</b> The Study Area does not contain vernal pool or other seasonal wetlands to support this species.	<b>Not Present.</b> No further actions are recommended for this species.

SPECIES	STATUS*	HABITAT REQUIREMENTS	POTENTIAL TO OCCUR IN THE STUDY AREA	RESULTS AND RECOMMENDATIONS
<i>Erythranthe nudata</i> bare monkeyflower	CRPR 4	Chaparral, cismontane woodland; located on serpentine seeps in brushy or wooded sites; serpentine indicator: SE. Elevation range: 810 – 2275 feet. Blooms: May – June.	<b>No Potential.</b> The Study Area does not contain serpentine substrate to support this species.	<b>Not Present.</b> No further actions are recommended for this species.
<i>Erythronium helenae</i> St. Helena fawn lily	CRPR 4	Chaparral, cismontane woodland, lower montane coniferous forest, valley and foothill grassland; located on volcanic or serpentine substrate; serpentine indicator: BE. Elevation range: 1135 – 3965 feet. Blooms: March – May.	<b>No Potential.</b> The Study Area does not contain volcanic or serpentine substrate to support this species.	<b>Not Present.</b> No further actions are recommended for this species.
<i>Fritillaria pluriflora</i> adobe lily	CRPR 1B	Chaparral, cismontane woodland, valley and foothill grassland; typically located on adobe clays, often derived from serpentine; serpentine indicator: WI. Elevation range: 195 – 2295 feet. Blooms: February – April.	<b>No Potential.</b> The Study Area does not contain adobe (heavy clay) or serpentine substrate to support this species.	<b>Not Present.</b> No further actions are recommended for this species.
<i>Fritillaria purdyi</i> Purdy's fritillary	CRPR 4	Chaparral, cismontane woodland, lower montane coniferous forest; usually situated on serpentine substrates; serpentine indicator: BE. Elevation range: 565 – 7330 feet. Blooms: March – June.	<b>No Potential.</b> The Study Area does not contain serpentine substrate to support this species.	<b>Not Present.</b> No further actions are recommended for this species.
<i>Harmonia hallii</i> Hall's harmonia	CRPR 1B	Chaparral, rock outcrops; situated on rocky serpentine substrates; often roadsides and roadcuts; serpentine indicator: SE. Elevation range: 1625 – 3170 feet. Blooms: April – June.	<b>No Potential.</b> The Study Area does not contain serpentine substrate to support this species.	<b>Not Present.</b> No further actions are recommended for this species.

SPECIES	STATUS*	HABITAT REQUIREMENTS	POTENTIAL TO OCCUR IN THE STUDY AREA	RESULTS AND RECOMMENDATIONS
<i>Harmonia nutans</i> nodding harmonia	CRPR 4	Chaparral, cismontane woodland; located on rocky to gravelly substrates derived from volcanics. Elevation range: 240 – 3170 feet. Blooms: March – May.	<b>No Potential.</b> The Study Area does not contain volcanic substrate to support this species.	<b>Not Present.</b> No further actions are recommended for this species.
<i>Hesperolinon bicarpellatum</i> Two-carpellate western flax	CRPR 1B	Chaparral; located on serpentine substrate; serpentine indicator: SE. Elevation range: 195 – 3270 feet. Blooms: May – July.	<b>No Potential.</b> The Study Area does not contain serpentine substrate to support this species.	<b>Not Present.</b> No further actions are recommended for this species.
<i>Hesperolinon breweri</i> Brewer's western flax	CRPR 1B	Chaparral, cismontane woodland, valley and foothill grassland; typically located in serpentine grassland and serpentine chaparral underlain by rocky substrates; serpentine indicator: SI. Elevation range: 95 – 2925 feet. Blooms: May – July.	<b>No Potential.</b> The Study Area does not contain serpentine substrate to support this species.	<b>Not Present.</b> No further actions are recommended for this species.
<i>Hesperolinon sharsmithiae</i> Sharsmith's western flax	CRPR 1B	Chaparral; located on volcanic or serpentine substrate; serpentine indicator: SE. Elevation range: 875 – 975 feet. Blooms: May – July.	<b>No Potential.</b> The Study Area does not contain volcanic or serpentine substrate to support this species.	<b>Not Present.</b> No further actions are recommended for this species.
<i>Lasthenia conjugens</i> Contra Costa goldfields	FE, CRPR 1B	Valley and foothill grassland, vernal pools, cismontane woodland; located in pools, swales, and depressions in mesic grassy sites underlain by alkaline substrate. Elevation range: 0 – 1530 feet. Blooms: March – June.	<b>No Potential.</b> The Study Area does not contain vernal pool or other seasonal wetlands to support this species.	<b>Not Present.</b> No further actions are recommended for this species.

SPECIES	STATUS*	HABITAT REQUIREMENTS	POTENTIAL TO OCCUR IN THE STUDY AREA	RESULTS AND RECOMMENDATIONS
<i>Layia septentrionalis</i> Colusa layia	CRPR 1B	Chaparral, cismontane woodland, valley and foothill grassland; on sandy, serpentine substrate; typically occurs in fields, grassy slopes; serpentine indicator: SI. Elevation range: 330 – 3595 feet. Blooms: April – May.	<b>No Potential.</b> The Study Area does not contain serpentine substrate to support this species.	<b>Not Present.</b> No further actions are recommended for this species.
<i>Leptosiphon aureus</i> bristly leptosiphon	CRPR 4, LR	Chaparral, cismontane woodland, coastal prairie, valley and foothill grassland; often located on shallow, rocky substrate in foothill positions. Elevation range: 175 – 4875 feet. Blooms: April – July.	<b>Unlikely.</b> The Study Area's substrate has been disturbed (graded, compacted gravel) to a degree that would preclude this species.	<b>Presumed Absent.</b> No further actions are recommended for this species.
<i>Leptosiphon jepsonii</i> Jepson's leptosiphon	CRPR 1B	Chaparral, cismontane woodland; on open to partially shaded grassy slopes on volcanic or the periphery of serpentine substrate. Elevation range: 330 – 1640 feet. Blooms: April – May.	<b>No Potential.</b> The Study Area does not contain volcanic or serpentine substrate to support this species.	<b>Not Present.</b> No further actions are recommended for this species.
<i>Leptosiphon latisectus</i> broad-lobed leptosiphon	CRPR 4	Broadleaf upland forest, cismontane woodland; frequently situated on volcanic and serpentine substrate; serpentine indicator: WI. Elevation range: 550 – 4875 feet. Blooms: April – June.	<b>No Potential.</b> The Study Area does not contain volcanic or serpentine substrate to support this species.	<b>Not Present.</b> No further actions are recommended for this species.
<i>Lilium bolanderi</i> Bolander's lily	CRPR 4	Chaparral, lower montane coniferous forest; typically situated on serpentine substrate; serpentine indicator: SE. Elevation range: 95 – 5200 feet. Blooms: June – July.	<b>No Potential.</b> The Study Area does not contain serpentine substrate to support this species.	<b>Not Present.</b> No further actions are recommended for this species.

SPECIES	STATUS*	HABITAT REQUIREMENTS	POTENTIAL TO OCCUR IN THE STUDY AREA	RESULTS AND RECOMMENDATIONS
<i>Limnanthes vinculans</i> Sebastopol meadowfoam	FE, SE, CRPR 1B	Mesic meadows, valley and foothill grassland, vernal pools; located in swales, wet meadows, depressions, and pools in the oak savanna of the Santa Rosa Plain on heavy adobe clay substrate. Elevation range: 3 – 2885 feet. Blooms: April – June.	<b>No Potential.</b> The Study Area does not contain vernal pool or other seasonal wetlands to support this species.	<b>Not Present.</b> No further actions are recommended for this species.
<i>Lomatium hooveri</i> Hoover's Lomatium	CRPR 4, LR	Chaparral, cismontane woodland; situated on soils derived from serpentine, and rarely volcanic; serpentine indicator: SE. Elevation range: 975 – 2880 feet. Blooms: April – July.	<b>No Potential.</b> The Study Area does not contain serpentine substrate to support this species.	<b>Not Present.</b> No further actions are recommended for this species.
<i>Lomatium repostum</i> Napa Lomatium	CRPR 4	Chaparral, cismontane woodland; located on serpentine or volcanic substrates; serpentine indicator: SI. Elevation range: 290 – 2700 feet. Blooms: March – June.	<b>No Potential.</b> The Study Area does not contain volcanic or serpentine substrate to support this species.	<b>Not Present.</b> No further actions are recommended for this species.
<i>Lupinus sericatus</i> Cobb Mountain lupine	CRPR 1B	Broadleaf upland forest, chaparral, cismontane woodland, lower montane coniferous forest; typically located in stands of knobcone pine-oak woodland, on open wooded slopes in gravelly substrate typically derived from volcanics, sometimes serpentine. Elevation range: 890 – 4960 feet. Blooms: March – June.	<b>Unlikely.</b> The Study Area does not contain woodland types (knobcone pine) associated with this species.	<b>Presumed Absent.</b> No further actions are recommended for this species.

SPECIES	STATUS*	HABITAT REQUIREMENTS	POTENTIAL TO OCCUR IN THE STUDY AREA	RESULTS AND RECOMMENDATIONS
<i>Malacothamnus helleri</i> Heller's bush-mallow	CRPR 4	Chaparral; situated on soils derived from sandstone. Elevation range: 1000 – 2085 feet. Blooms: June – August.	<b>Moderate Potential.</b> The Study Area contains small portions of woodlands that may support this species.	<b>Presence Unknown without Impact.</b> Although this species may be present, it would not occur within the Project Area's footprint; therefore, no impacts will occur. No further actions are recommended for this species.
<i>Micropus amphibolus</i> Mt. Diablo cottonweed	CRPR 3	Broadleaf upland forest, chaparral, cismontane woodland, valley and foothill grassland; typically on thin, rocky soils; serpentine indicator: WI. Elevation range: 145 – 2710 feet. Blooms: March – May.	<b>Unlikely.</b> The Study Area's substrate has been disturbed (graded, compacted gravel) to a degree that would preclude this species.	<b>Presumed Absent.</b> No further actions are recommended for this species.
<i>Monardella viridis</i> green monardella	CRPR 4	Broadleaf upland forest, chaparral, cismontane woodland; situated on serpentine or volcanic soils; serpentine indicator: BE/SI. Elevation range: 325 – 3285 feet. Blooms: June – September.	<b>No Potential.</b> The Study Area does not contain volcanic or serpentine substrate to support this species.	<b>Not Present.</b> No further actions are recommended for this species.
<i>Navarretia cotulifolia</i> cotula navarretia	CRPR 4, LR	Chaparral, cismontane woodland, valley and foothill grassland; located on adobe substrate. Elevation range: 10 – 5950 feet. Blooms: May – June.	<b>No Potential.</b> The Study Area does not contain adobe (heavy clay) substrate to support this species.	<b>Not Present.</b> No further actions are recommended for this species.
<i>Navarretia heterandra</i> Tehama navarretia	CRPR 4	Valley and foothill grasslands, vernal pools; situated in pools and mesic grasslands. Elevation range: 95 – 3285 feet. Blooms: April – June.	<b>No Potential.</b> The Study Area does not contain vernal pool or other seasonal wetlands to support this species.	<b>Not Present.</b> No further actions are recommended for this species.

SPECIES	STATUS*	HABITAT REQUIREMENTS	POTENTIAL TO OCCUR IN THE STUDY AREA	RESULTS AND RECOMMENDATIONS
<i>Navarretia jepsonii</i> Jepson's navarretia	CRPR 4	Chaparral, cismontane woodland, valley and foothill grassland; situated on serpentine substrates; serpentine indicator: SE. Elevation range: 565 – 2780 feet. Blooms: April – June.	<b>No Potential.</b> The Study Area does not contain serpentine substrate to support this species.	<b>Not Present.</b> No further actions are recommended for this species.
<i>Navarretia leucocephala</i> ssp. <i>bakeri</i> Baker's navarretia	CRPR 1B	Wet, mesic sites underlain by adobe and/or alkaline substrate in cismontane woodland, meadows, seeps, vernal pools, valley and foothill grassland, lower montane coniferous forest. Elevation range: 15 – 5710 feet. Blooms: April – July.	<b>No Potential.</b> The Study Area does not contain vernal pool or other seasonal wetlands to support this species.	<b>Not Present.</b> No further actions are recommended for this species.
<i>Navarretia leucocephala</i> ssp. <i>pauciflora</i> few-flowered navarretia	FE, ST, CRPR 1B	Vernal pools; located on volcanic ash flow and volcanic substrate pools. Elevation range: 1300 – 2780 feet. Blooms: May – June.	<b>No Potential.</b> The Study Area does not contain vernal pool or other seasonal wetlands to support this species.	<b>Not Present.</b> No further actions are recommended for this species.
<i>Navarretia paradoxinota</i> Porter's navarretia	CRPR 1B	Meadow and seep; typically situated in vernal mesic openings underlain by serpentine substrate; serpentine indicator: SE. Elevation range: 535 – 2730 feet. Blooms: May – June, sometimes July.	<b>No Potential.</b> The Study Area does not contain vernal pool or other seasonal wetlands to support this species.	<b>Not Present.</b> No further actions are recommended for this species.
<i>Navarretia rosulata</i> Marin County navarretia	CRPR 1B	Closed-cone coniferous forest, chaparral; located on dry, rocky sites often formed from serpentine; serpentine indicator: SE. Elevation range: 650 – 2065 feet. Blooms: May – July.	<b>No Potential.</b> The Study Area does not contain serpentine substrate to support this species.	<b>Not Present.</b> No further actions are recommended for this species.

SPECIES	STATUS*	HABITAT REQUIREMENTS	POTENTIAL TO OCCUR IN THE STUDY AREA	RESULTS AND RECOMMENDATIONS
<i>Penstemon newberryi</i> var. <i>sonomensis</i> Sonoma beardtongue	CRPR 1B	Chaparral; crevices in rock outcrops and talus slopes on ridgelines and mountain peaks. Elevation range: 2295 – 4495 feet. Blooms: April – August.	<b>No Potential.</b> The Study Area does not contain large volcanic rock outcrops on knife-back ridges to support this species.	<b>Not Present.</b> No further actions are recommended for this species.
<i>Ranunculus lobbii</i> Lobb's buttercup	CRPR 4	Cismontane woodland, North Coast coniferous forest, valley and foothill grassland, vernal pools; located in mesic, vernal wet areas. Elevation range: 45 – 1530 feet. Blooms: February – May.	<b>No Potential.</b> The Study Area does not contain vernal pool or other seasonal wetlands to support this species.	<b>Not Present.</b> No further actions are recommended for this species.
<i>Sagittaria sanfordii</i> Sanford's arrowhead	CRPR 1B	Marshes and swamps; located in assorted shallow freshwater habitats including canals and perennial drainage ditches. Elevation range: 0 – 2115 feet. Blooms: May – October, sometimes November.	<b>No Potential.</b> The Study Area does not contain marsh or other perennial wetlands to support this species.	<b>Not Present.</b> No further actions are recommended for this species.
<i>Sidalcea keckii</i> Keck's checkerbloom	FE, CRPR 1B	Cismontane woodland, valley and foothill grassland; located in grassy areas in blue oak woodland underlain by serpentine substrate; serpentine indicator: SI. Elevation range: 240 – 2115 feet. Blooms: April – June.	<b>No Potential.</b> The Study Area does not contain serpentine substrate to support this species.	<b>Not Present.</b> No further actions are recommended for this species.
<i>Sidalcea oregana</i> ssp. <i>hydrophila</i> marsh checkerbloom	CRPR 1B	Meadows and seeps, riparian forest; located on wet soils along streambanks and meadows. Elevation range: 3575 – 7475 feet. Blooms: July – August.	<b>No Potential.</b> The Study Area does not contain marsh or other perennial wetlands to support this species.	<b>Not Present.</b> No further actions are recommended for this species.

SPECIES	STATUS*	HABITAT REQUIREMENTS	POTENTIAL TO OCCUR IN THE STUDY AREA	RESULTS AND RECOMMENDATIONS
<i>Streptanthus hesperidis</i> green jewelflower	CRPR 1B	Chaparral, cismontane woodland; located in openings in brushy/wooded sites on rocky serpentine substrate; serpentine indicator: SE. Elevation range: 420 – 2470 feet. Blooms: May – July.	<b>No Potential.</b> The Study Area does not contain serpentine substrate to support this species.	<b>Not Present.</b> No further actions are recommended for this species.
<i>Streptanthus morrisonii</i> ssp. <i>elatus</i> Three Peaks jewel-flower	CRPR 1B	Serpentine chaparral; serpentine indicator: SE. Elevation range: 90 – 815 feet. Blooms: June – September.	<b>No Potential.</b> The Study Area does not contain serpentine substrate to support this species.	<b>Not Present.</b> No further actions are recommended for this species.
<i>Toxicoscordion fontanum</i> marsh zigzag	CRPR 4	Chaparral, cismontane woodland, lower montane coniferous forest, meadows and seeps, marshes and swamps; located in vernal mesic sites underlain by serpentine; serpentine indicator: BE/SI. Elevation range: 45 – 3250 feet. Blooms: April – July.	<b>No Potential.</b> The Study Area does not contain serpentine substrate to support this species.	<b>Not Present.</b> No further actions are recommended for this species.
<i>Trichostema ruygtii</i> Napa bluecurls	CRPR 1B, LR	Cismontane woodland, chaparral, valley and foothill grassland, vernal pools, lower montane coniferous forest; located in open, sunny locations, and dried vernal pools underlain by volcanic ash rock outcrops and flats. Elevation range: 95 – 2210 feet. Blooms: June – October.	<b>No Potential.</b> The Study Area does not contain volcanic ash substrate to support this species.	<b>Not Present.</b> No further actions are recommended for this species.
<i>Triteleia lugens</i> dark-mouthed triteleia	CRPR 4, LR	Broadleaf upland forest, chaparral, lower montane coniferous forest, coastal scrub. Elevation range: 325 – 3250 feet. Blooms: April – June.	<b>Unlikely.</b> The Study Area does not contain the chaparral or forest types associated with this species.	<b>Presumed Absent.</b> No further actions are recommended for this species.

SPECIES	STATUS*	HABITAT REQUIREMENTS	POTENTIAL TO OCCUR IN THE STUDY AREA	RESULTS AND RECOMMENDATIONS
<b>WILDLIFE</b>				
<b>Mammals</b>				
<i>Antrozous pallidus</i> pallid bat	SSC, WBWG High	Found in deserts, grasslands, shrublands, woodlands, and forests. Most common in open, forages along river channels. Roost sites include crevices in rocky outcrops and cliffs, caves, mines, trees and various manmade structures such as bridges, barns, and buildings (including occupied buildings). Roosts must protect bats from high temperatures. Very sensitive to disturbance of roosting sites.	<b>Moderate Potential.</b> The Study Area contains woodland with large trees that may provide maternity roost habitat for this species.	<b>Presence Unknown without Impact.</b> No trees will be removed as part of this project; therefore, there are no impacts. No further actions are recommended for this species.
<i>Bassariscus astutus</i> ringtail (ringtail cat)	SFP	Widely distributed throughout much of California. Found in a variety of habitats including riparian areas, semi-arid country, deserts, chaparral, oak woodlands, pinyon pine woodlands, juniper woodlands and montane conifer forests usually under 4,600 ft. elevation. Typically uses cliffs or large trees for shelter.	<b>Unlikely.</b> The Study Area is situated on an isolated hill surrounded by development (roads, vineyards, residences). This species is typically located in dense, extensive, contiguous woodlands and forests away from development.	<b>Presumed Absent.</b> No further actions are recommended for this species.
<i>Corynorhinus townsendii</i> <i>townsendii</i> Townsend's western big-eared bat	SSC, WBWG High	Humid coastal regions of northern and central California. Roosts in limestone caves, lava tubes, mines, buildings etc. Will only roost in the open, hanging from walls and ceilings. Roosting sites limiting. Extremely sensitive to disturbance	<b>No Potential.</b> The Study Area does not contain mines, caves, or abandoned/unmaintained buildings to support this species.	<b>Not Present.</b> No further actions are recommended for this species.

SPECIES	STATUS*	HABITAT REQUIREMENTS	POTENTIAL TO OCCUR IN THE STUDY AREA	RESULTS AND RECOMMENDATIONS
<i>Eumops perotis californicus</i> western mastiff bat	SSC, WBWG High	Found in a wide variety of open, arid and semi-arid habitats. Distribution appears to be tied to large rock structures which provide suitable roosting sites, including cliff crevices and cracks in boulders.	<b>No Potential.</b> The Study Area does not contain large rock outcrops, rock piles, or rocky cliff faces to support this species.	<b>Not Present.</b> No further actions are recommended for this species.
<i>Lasiurus blossevillii</i> western red bat	SSC, WBWG High	Highly migratory and typically solitary, roosting primarily in the foliage of trees or shrubs. It is associated with broad-leaved tree species including cottonwoods, sycamores, alders, and maples. Day roosts are commonly in edge habitats adjacent to streams or open fields, in orchards, and sometimes in urban areas.	<b>Unlikely.</b> The Study Area does not contain the tree species associated with this species.	<b>Presumed Absent.</b> No further actions are recommended for this species.
<i>Myotis thysanodes</i> fringed myotis	WBWG High	Associated with a wide variety of habitats including dry woodlands, desert scrub, mesic coniferous forest, grassland, and sage-grass steppes. Building, mines, and large trees and snags are important day and night roosts.	<b>Moderate Potential.</b> The Study Area contains woodland with large trees that may provide maternity roost habitat for this species.	<b>Presence Unknown without Impact.</b> No trees will be removed as part of this project; therefore, there are no impacts. No further actions are recommended for this species.
<i>Myotis volans</i> long-legged myotis	WBWG High	Primarily found in coniferous forests, but also occurs seasonally in riparian and desert habitats. Large hollow trees, rock crevices, buildings, mines, and caves are important day roosts.	<b>Moderate Potential.</b> The Study Area contains woodland with large trees that may provide maternity roost habitat for this species.	<b>Presence Unknown without Impact.</b> No trees will be removed as part of this project; therefore, there are no impacts. No further actions are recommended for this species.

SPECIES	STATUS*	HABITAT REQUIREMENTS	POTENTIAL TO OCCUR IN THE STUDY AREA	RESULTS AND RECOMMENDATIONS
<p><i>Reithrodontomys raviventris</i> salt marsh harvest mouse</p>	<p>FE, SE, SFP</p>	<p>Endemic to emergent salt and brackish wetlands of the San Francisco Bay Estuary. Pickleweed marshes are primary habitat; also occurs in various other wetland communities with dense vegetation. Does not burrow, builds loosely organized nests. Requires higher areas for dryland refugia during high tides.</p>	<p><b>No Potential.</b> The Study Area does not contain coastal brackish marsh habitat to support this species.</p>	<p><b>Not Present.</b> No further actions are recommended for this species.</p>
<p><i>Sorex ornatus sinuosus</i> Suisun shrew</p>	<p>SSC</p>	<p>Tidal marshes of the northern shores of San Pablo and Suisun bays. Require dense low-lying vegetation cover, driftwood, and other litter above the mean high tide line for nesting and foraging.</p>	<p><b>No Potential.</b> The Study Area does not contain coastal brackish marsh habitat to support this species.</p>	<p><b>Not Present.</b> No further actions are recommended for this species.</p>
<p><i>Taxidea taxus</i> American badger</p>	<p>SSC</p>	<p>Most abundant in drier open stages of most shrub, woodland, and herbaceous vegetation types. Requires friable soils and open, uncultivated ground. Preys on burrowing rodents.</p>	<p><b>Unlikely.</b> The Study Area's grasslands are relatively limited in size and are surrounded by dense woodland not favored by this species.</p>	<p><b>Presumed Absent.</b> No further actions are recommended for this species.</p>

SPECIES	STATUS*	HABITAT REQUIREMENTS	POTENTIAL TO OCCUR IN THE STUDY AREA	RESULTS AND RECOMMENDATIONS
<b>Birds</b>				
<i>Agelaius tricolor</i> tricolored blackbird	ST, SSC	Nearly endemic to California, where it is most numerous in the Central Valley and vicinity. Highly colonial, nesting in dense aggregations over or near freshwater in emergent growth or riparian thickets. Also uses flooded agricultural fields. Abundant insect prey near breeding areas essential.	<b>No Potential.</b> The Study Area does not provide vegetated ponds or emergent marsh suitable for nesting. Napa County documented occurrences limited to bottomlands in Pope Valley, Lake Hennessey, Napa Valley, and the Baylands (eBird 2024).	<b>Not Present.</b> No further actions are recommended for this species.
<i>Ammodramus savannarum</i> grasshopper sparrow	SSC, LR	Summer resident. Breeds in open grasslands in lowlands and foothills, generally with low- to moderate-height grasses and scattered shrubs. Well-hidden nests are placed on the ground.	<b>Unlikely.</b> Suitable grassland cover is relatively limited within most of the Study Area, and this species has not been documented in this portion of the County as per available sources (Smith 2003, eBird 2024).	<b>Presumed Absent.</b> No further actions are recommended for this species.
<i>Aquila chrysaetos</i> golden eagle	BGEPA, SFP	Occurs year-round in rolling foothills, mountain areas, sage-juniper flats, and deserts. Cliff-walled canyons provide nesting habitat in most parts of range; also nests in large trees, usually within otherwise open areas.	<b>Unlikely.</b> The Study Area does not provide large cliffs or typical large trees for nesting; may forage in the vicinity.	<b>Presumed Absent.</b> No further actions are recommended for this species.

SPECIES	STATUS*	HABITAT REQUIREMENTS	POTENTIAL TO OCCUR IN THE STUDY AREA	RESULTS AND RECOMMENDATIONS
<i>Ardea alba</i> great egret	no status (breeding sites protected by CDFW)	Year-round resident. Nests colonially or semi-colonially, usually in trees, occasionally on the ground or elevated platforms. Breeding sites are usually in proximity to foraging areas: marshes, lake margins, tidal flats, and rivers. Forages primarily on fishes and other aquatic prey, also smaller terrestrial vertebrates.	<b>No Potential.</b> The Study Area is not situated in area with extensive, contiguous aquatic habitat (marshes, lakes) for foraging; this species typically roosts and nests in areas very near large aquatic bodies.	<b>Not Present.</b> No further actions are recommended for this species.
<i>Ardea herodias</i> great blue heron	LR (breeding sites protected by CDFW)	Year-round resident. Nests colonially or semi-colonially in tall trees and cliffs, also sequestered terrestrial substrates. Breeding sites usually in close proximity to foraging areas: marshes, lake margins, tidal flats, and rivers. Forages primarily on fishes and other aquatic prey, also smaller terrestrial vertebrates.	<b>No Potential.</b> The Study Area is not situated in area with extensive, contiguous aquatic habitat (marshes, lakes) for foraging; this species typically roosts and nests in areas very near large aquatic bodies.	<b>Not Present.</b> No further actions are recommended for this species.
<i>Asio flammeus</i> short-eared owl	SSC	Occurs year-round, but primarily as a winter visitor; breeding very restricted in most of California. Found in open, treeless areas (e.g., marshes, grasslands) with elevated sites for foraging perches and dense herbaceous vegetation for roosting and nesting. Preys mostly on small mammals, particularly voles.	<b>No Potential.</b> Known distribution (wintering) is restricted to the Napa baylands; breeding in the County has never been documented (Smith 2003, eBird 2024). No documented occurrences within five miles of the Study Area (CDFW 2024a, eBird 2024).	<b>Not Present.</b> No further actions are recommended for this species.

SPECIES	STATUS*	HABITAT REQUIREMENTS	POTENTIAL TO OCCUR IN THE STUDY AREA	RESULTS AND RECOMMENDATIONS
<i>Asio otus</i> long-eared owl	SSC	Occurs year-round in California. Nests in trees in a variety of woodland habitats, including oak and riparian, as well as tree groves. Requires adjacent open land with rodents for foraging, and the presence of old nests of larger birds (hawks, crows, magpies) for breeding.	<b>Unlikely.</b> The Study Area does not contain large tracts of open woodland (savannah) and grassland, nor is it in a valley or rolling foothill setting as favored by this species.	<b>Presumed Absent.</b> No further actions are recommended for this species.
<i>Athene cunicularia</i> burrowing owl	SSC	Year-round resident and winter visitor. Occurs in open, dry grasslands and scrub habitats with low-growing vegetation, perches and abundant mammal burrows. Preys upon insects and small vertebrates. Nests and roosts in old mammal burrows, most commonly those of ground squirrels.	<b>No Potential.</b> Breeding and wintering distribution within Napa County are restricted to the vicinity of Lake Berryessa and southern Baylands (Smith 2003, CDFW 2024a). Wintering population in Pope Valley (eBird 2024). Broadly, this species is known from valleys, bottomlands, and low-lying grassy foothills.	<b>Not Present.</b> No further actions are recommended for this species.
<i>Buteo swainsoni</i> Swainson's hawk	ST	Summer resident in Central Valley and limited portions of the southern California interior. Nests in tree groves and isolated trees in riparian and agricultural areas, including near buildings. Forages in grasslands and scrub habitats as well as agricultural fields, especially alfalfa. Preys on arthropods year-round as well as smaller vertebrates during the breeding season.	<b>No Potential.</b> Napa County's very small breeding population is restricted to the Napa Valley floor in association with the Napa River and Baylands (CDFW 2024a, eBird 2024). Broadly, this species is known only from valleys and bottomlands in California; may forage in foothills.	<b>Not Present.</b> No further actions are recommended for this species.

SPECIES	STATUS*	HABITAT REQUIREMENTS	POTENTIAL TO OCCUR IN THE STUDY AREA	RESULTS AND RECOMMENDATIONS
<i>Charadrius nivosus nivosus</i> western snowy plover	FT, SSC	Federal listing applies only to the Pacific coastal population. Year-round resident and winter visitor. Occurs on sandy beaches, salt pond levees, and the shores of large alkali lakes. Nests on the ground, requiring sandy, gravelly or friable soils.	<b>No Potential.</b> The Study Area does not contain beaches or other suitable barren habitat near water.	<b>Not Present.</b> No further actions are recommended for this species.
<i>Circus hudsonius</i> northern harrier	SSC	Year-round resident and winter visitor. Found in open habitats including grasslands, prairies, marshes and agricultural areas. Nests on the ground in dense vegetation, typically near water or otherwise moist areas. Preys on small vertebrates.	<b>Unlikely.</b> Open grassland areas within the Study Area are generally arid and relatively rocky and limited in size; this species is not known to nest in this portion of Napa County as per Smith (2003). Napa County documented occurrences predominantly from bottomland areas in Pope Valley, Lake Berryessa, Napa Valley, and Baylands (eBird 2024).	<b>Presumed Absent.</b> No further actions are recommended for this species.
<i>Contopus cooperi</i> olive-sided flycatcher	SSC	Summer resident. Typical breeding habitat is montane coniferous forests. At lower elevations, also occurs in wooded canyons and mixed forests and woodlands. Often associated with forest edges. Arboreal nest sites located well off the ground.	<b>No Potential.</b> The Study Area does not contain forest or woodland stands of the type typically used by this species. Napa County documented occurrences predominantly from montane settings in conifer stands in the Howell Mountain and Atlas Peak areas, and Mayacama Mountains particularly around Mt. St. Helena (eBird 2024).	<b>Not Present.</b> No further actions are recommended for this species.

SPECIES	STATUS*	HABITAT REQUIREMENTS	POTENTIAL TO OCCUR IN THE STUDY AREA	RESULTS AND RECOMMENDATIONS
<i>Cypseloides niger</i> black swift	SSC	Summer resident with a fragmented breeding distribution; most occupied areas in California either montane or coastal. Breeds in small colonies on cliffs behind or adjacent to waterfalls, in deep canyons, and sea-bluffs above surf. Forages aerially over wide areas. No modern nesting records in Napa County.	<b>No Potential.</b> The Study Area does not contain waterfalls; there are no modern breeding records for Napa County (Smith 2003, Shuford and Gardali 2008). Napa County documented occurrences limited to Wooden Valley (eBird 2024).	<b>Not Present.</b> No further actions are recommended for this species.
<i>Egretta thula</i> snowy egret	no status (breeding sites protected by CDFW)	Year-round resident. Nests colonially, usually in trees, at times in sequestered beds of dense emergent vegetation (e.g., tules). Rookery sites usually situated close to foraging areas: marshes, tidal-flats, streams, wet meadows, and borders of lakes.	<b>No Potential.</b> The Study Area is not situated in area with extensive, contiguous aquatic habitat (marshes, lakes) for foraging; this species typically roosts and nests in areas very near large aquatic bodies.	<b>Not Present.</b> No further actions are recommended for this species.
<i>Elanus leucurus</i> white-tailed kite	SFP	Year-round resident in coastal and valley lowlands with scattered trees and large shrubs, including grasslands, marshes and agricultural areas. Nests in trees, of which the type and setting are highly variable. Preys on small mammals and other vertebrates.	<b>Moderate Potential.</b> Woodland within the Study Area provides suitable nesting trees, and open areas for foraging. This species typically situated in valleys, canyons, and bottomlands.	<b>Presence Unknown.</b> Initial ground disturbance should occur outside of nesting season or conduct pre-construction surveys and avoid any active nests found. See Section 6.0 for details.
<i>Falco peregrinus anatum</i> American peregrine falcon	SE, SFP	Year-round resident and winter visitor. Occurs near water, including coastal areas, wetlands, lakes and rivers. Usually nests on sheltered cliffs or tall man-made structures. Preys primarily on waterbirds.	<b>No Potential.</b> The Study Area does not contain large cliffs or suitable man-made structures for nesting.	<b>Not Present.</b> No further actions are recommended for this species.

SPECIES	STATUS*	HABITAT REQUIREMENTS	POTENTIAL TO OCCUR IN THE STUDY AREA	RESULTS AND RECOMMENDATIONS
<i>Geothlypis trichas sinuosa</i> San Francisco (saltmarsh) common yellowthroat	SSC	Resident of the San Francisco Bay region, in fresh and salt water marshes. Requires thick, continuous cover down to water surface for foraging; tall grasses, tule patches, willows for nesting.	<b>No Potential.</b> No marsh vegetation is present within the Study Area. Napa County distribution limited to Lake Hennessey, Lake Berryessa, Napa Valley, and Baylands (eBird 2024).	<b>Not Present.</b> No further actions are recommended for this species.
<i>Haliaeetus leucocephalus</i> bald eagle	BGEPA, SE, SFP	Occurs year-round in California, but primarily a winter visitor; breeding population is growing. Nests in large trees in the vicinity of larger lakes, reservoirs, and rivers. Wintering habitat somewhat more variable but usually features large concentrations of waterfowl or fish.	<b>No Potential.</b> Larger water bodies are not within or in close proximity to the Study Area. As per Smith (2003) and CDFW (2024a), nesting within Napa County is known only from the immediate vicinity of Lake Berryessa.	<b>Not Present.</b> No further actions are recommended for this species.
<i>Icteria virens</i> yellow-breasted chat	SSC, LR	Summer resident, occurring in riparian areas with an open canopy, very dense understory, and trees for song perches. Nests in thickets of willow ( <i>Salix</i> spp.), blackberry ( <i>Rubus</i> spp.), and wild grape ( <i>Vitis californicus</i> ).	<b>No Potential.</b> The Study Area does not contain stands of dense riparian understory favored by this species for nesting. There are no recent observations in the vicinity (eBird 2024).	<b>Not Present.</b> No further actions are recommended for this species.
<i>Lanius ludovicianus</i> loggerhead shrike	SSC, LR	Year-round resident in open woodland, grasslands, savannah, and scrub. Prefers areas with sparse shrubs, trees, posts, and other suitable perches for foraging. Preys upon large insects and small vertebrates. Nests are well-concealed in densely-foliaged shrubs or trees.	<b>Unlikely.</b> The Study Area provides only limited and non-native grassland habitat; few documented occurrences from this part of Napa County (eBird 2024).	<b>Presumed Absent.</b> No further actions are recommended for this species.

SPECIES	STATUS*	HABITAT REQUIREMENTS	POTENTIAL TO OCCUR IN THE STUDY AREA	RESULTS AND RECOMMENDATIONS
<i>Laterallus jamaicensis coturniculus</i> California black rail	ST, SFP	Year-round resident in marshes (saline to freshwater) with dense vegetation within four inches of the ground. Prefers larger, undisturbed marshes that have an extensive upper zone and are close to a major water source. Extremely secretive and cryptic.	<b>No Potential.</b> The Study Area does not contain tidal or brackish marsh. Within Napa County, this species is restricted to baylands and the lower Napa River.	<b>Not Present.</b> No further actions are recommended for this species.
<i>Melospiza melodia samuelis</i> San Pablo song sparrow	SSC	Year-round resident of tidal marshes along the north side of San Francisco and San Pablo Bays. Typical habitat is dominated by pickleweed, with gumplant and other shrubs present in the upper zone for nesting. May forage in areas adjacent to marshes.	<b>No Potential.</b> The Study Area contains no tidal or brackish marsh and is outside of this species' limited Napa County range.	<b>Not Present.</b> No further actions are recommended for this species.
<i>Nycticorax nycticorax</i> black-crowned night heron	no status (breeding sites protected by CDFW)	Year-round resident. Nests colonially, usually in trees but also in patches of emergent vegetation. Rookery sites are often on islands and usually located adjacent to foraging areas: margins of lakes and bays.	<b>No Potential.</b> The Study Area and adjacent lands lack aquatic foraging habitat.	<b>Not Present.</b> No further actions are recommended for this species.
<i>Passerculus sandwichensis alaudinus</i> Bryant's savannah sparrow	SSC	Year-round resident associated with the coastal fog belt, primarily between Humboldt and northern Monterey Counties. Occupies low tidally influenced habitats and adjacent areas, including grasslands. Also uses drier, more upland coastal grasslands. Nests near the ground in taller vegetation, including along levees and canals.	<b>Unlikely.</b> The Study Area's grasslands are relatively limited in size and more arid than is typical nesting habitat for this species.	<b>Presumed Absent.</b> No further actions are recommended for this species.

SPECIES	STATUS*	HABITAT REQUIREMENTS	POTENTIAL TO OCCUR IN THE STUDY AREA	RESULTS AND RECOMMENDATIONS
<i>Progne subis</i> purple martin	SSC, LR	Summer resident. Inhabits woodlands and low-elevation coniferous forests. Nests in old woodpecker cavities and man-made structures (bridges, utility towers). Nest is often located in tall, isolated tree or snag.	<b>No Potential.</b> Typical mixed or coniferous forest habitat is not present, and this species' Napa County range is restricted to the forested, northwestern portion of the County (Smith 2003, CDFW 2024a).	<b>Not Present.</b> No further actions are recommended for this species.
<i>Rallus obsoletus obsoletus</i> California Ridgway's (clapper) rail	FE, SE, SFP	Year-round resident in tidal marshes of the San Francisco Bay estuary. Requires tidal sloughs and intertidal mud flats for foraging, and dense marsh vegetation for nesting and cover. Typical habitat features abundant growth of cordgrass and pickleweed. Feeds primarily on mollusks and crustaceans.	<b>No Potential.</b> The Study Area does not contain tidal or brackish marsh. Within Napa County, this species is restricted to baylands and the lower Napa River.	<b>Not Present.</b> No further actions are recommended for this species.
<i>Riparia riparia</i> bank swallow	ST	Summer resident in riparian and other lowland habitats near rivers, lakes, and the Pacific Ocean in northern California. Nests colonially in excavated burrows on vertical cliffs and bank cuts (natural and manmade) with fine-textured soils. Historical nesting ranges in southern and central areas of California has been eliminated by habitat loss. Currently known to breed in Siskiyou, Shasta, and Lassen counties; portions of the North Coast; and along the Sacramento River.	<b>No Potential.</b> The Study Area does not contain cliffs or cuts with fine-textured soils or any other potentially suitable nesting substrate. Not known to nest in Napa County as per Smith (2003).	<b>Not Present.</b> No further actions are recommended for this species.

SPECIES	STATUS*	HABITAT REQUIREMENTS	POTENTIAL TO OCCUR IN THE STUDY AREA	RESULTS AND RECOMMENDATIONS
<i>Setophaga petechia brewsteri</i> (Brewster's) yellow warbler	SSC	Summer resident throughout much of California. Breeds in riparian vegetation close to water, including streams and wet meadows. Microhabitat used for nesting is variable, but dense willow growth is typical. Occurs widely on migration.	<b>No Potential.</b> The Study Area does not contain riparian habitat with dense, mature thickets of willows.	<b>Not Present.</b> No further actions are recommended for this species.
<i>Spizella atrogularis</i> black-chinned sparrow	LR	Summer resident. Typically occurs on arid, rocky slopes with brushy vegetation, e.g. mixed chaparral, and sagebrush.	<b>No Potential.</b> The Study Area does not contain chaparral or similar habitats with dense, mature brush to support this species.	<b>Not Present.</b> No further actions are recommended for this species.
<i>Strix occidentalis caurina</i> northern spotted owl	FT, ST, SSC	Year-round resident in dense, structurally complex forests, primarily those with stands of mature conifers. In Napa County, uses both coniferous and mixed (coniferous-hardwood) forests. Nests on platform-like substrates in the forest canopy, including in tree cavities. Preys on mammals.	<b>No Potential.</b> The Study Area does not contain conifer or mixed broadleaf-conifer forest nor is any present in the immediate vicinity.	<b>Not Present.</b> No further actions are recommended for this species.
<i>Xanthocephalus xanthocephalus</i> yellow-headed blackbird	SSC, LR	Summer resident. Breeds colonially in freshwater emergent wetlands with dense vegetation and deep water, often along borders of lakes or ponds. Requires abundant large insects such as dragonflies; nesting is timed for maximum emergence of insect prey.	<b>No Potential.</b> The Study Area does not provide vegetated ponds or emergent marsh suitable for nesting.	<b>Not Present.</b> No further actions are recommended for this species.

SPECIES	STATUS*	HABITAT REQUIREMENTS	POTENTIAL TO OCCUR IN THE STUDY AREA	RESULTS AND RECOMMENDATIONS
<b>Reptiles and Amphibians</b>				
<i>Dicamptodon ensatus</i> California giant salamander	SSC	Occurs in the north-central Coast Ranges. Moist coniferous and mixed forests are typical habitat; also uses woodland and chaparral. Adults are terrestrial and fossorial, breeding in cold, permanent or semi-permanent streams. Larvae usually remain aquatic for over a year.	<b>Unlikely.</b> Although the Study Area contains ephemeral streams, these do not contain a hydroperiod or other essential features to support this species.	<b>Presumed Absent.</b> No further recommendations for this species.
<i>Emys marmorata</i> western pond turtle	SSC	A thoroughly aquatic turtle of ponds, marshes, rivers, streams and irrigation ditches with aquatic vegetation. Require basking sites such as partially submerged logs, vegetation mats, or open mud banks, and suitable upland habitat (sandy banks or grassy open fields) for egg-laying.	<b>No Potential.</b> The Study Area does not contain perennial wetlands or ponds with natural substrate and wetland fringe vegetation to provide breeding and foraging habitat.	<b>Not Present.</b> No further recommendations for this species.
<i>Rana boylei</i> foothill yellow-legged frog	SSC	Found in or near rocky streams in a variety of habitats; highly aquatic. Prefers partially-sunlit, shallow streams and riffles with a rocky substrate; requires at least some cobble-sized substrate for egg-laying. Needs at least 15 weeks to attain metamorphosis. Feeds on invertebrates (aquatic and terrestrial).	<b>Unlikely.</b> Although the Study Area contains ephemeral streams, these do not contain a hydroperiod or other essential features to support this species.	<b>Presumed Absent.</b> No further recommendations for this species.

SPECIES	STATUS*	HABITAT REQUIREMENTS	POTENTIAL TO OCCUR IN THE STUDY AREA	RESULTS AND RECOMMENDATIONS
<p><i>Rana draytonii</i> California red-legged frog</p>	<p>FT, SSC</p>	<p>Lowlands and foothills in or near permanent sources of deep water with dense emergent and/or overhanging riparian vegetation. Favors perennial to intermittent ponds, marshes, and stream pools. Requires 11 to 20 weeks of continuous inundation for larval development. Disperses through upland habitats during and after rains.</p>	<p><b>No Potential.</b> The Study Area does not contain perennial wetlands or ponds with natural substrate and wetland fringe vegetation to provide breeding and foraging habitat.</p>	<p><b>Not Present.</b> No further recommendations for this species.</p>
<p><i>Taricha rivularis</i> red-bellied newt</p>	<p>SSC</p>	<p>Inhabits coastal forests from southern Sonoma County northward, with an isolated population in Santa Clara County. Redwood forest provides typical habitat, though other forest types (e.g., hardwood) are also occupied. Adults are terrestrial and fossorial. Breeding occurs in streams, usually with relatively strong flows.</p>	<p><b>No Potential.</b> The Study Area does not contain dense, mesic forest to support this species.</p>	<p><b>Not Present.</b> No further actions are recommended for this species.</p>

SPECIES	STATUS*	HABITAT REQUIREMENTS	POTENTIAL TO OCCUR IN THE STUDY AREA	RESULTS AND RECOMMENDATIONS
<b>Fishes</b>				
<i>Acipenser medirostris</i> green sturgeon	FT, SSC	Spawns in the Sacramento River and Klamath Rivers, at temperatures between 8 and 14 degrees Celsius. Preferred spawning substrate is large cobble but can range from clean sand to bedrock.	<b>No Potential.</b> The Study Area does not contain riverine or estuarine waters.	<b>Not Present.</b> No further actions are recommended for this species.
<i>Eucyclogobius newberryi</i> tidewater goby	FE, SSC	Brackish water habitats along the California coast from Agua Hedionda Lagoon, San Diego County to the mouth of the Smith River. Found in shallow lagoons and lower stream reaches. Requires fairly still but not stagnant water and high oxygen levels.	<b>No Potential.</b> The Study Area does not contain brackish or estuarine waters.	<b>Not Present.</b> No further actions are recommended for this species.
<i>Hypomesus transpacificus</i> Delta smelt	FT, ST	Endemic to the Sacramento-San Joaquin estuary in areas where salt and freshwater systems meet. Occurs seasonally in Suisun Bay, Carquinez Strait and San Pablo Bay. Seldom found at salinities > 10 ppt; most often at salinities < 2 ppt.	<b>No Potential.</b> The Study Area does not contain estuarine waters.	<b>Not Present.</b> No further actions are recommended for this species.
<i>Lampetra ayresi</i> river lamprey	SSC	Lower Sacramento River, San Joaquin River and Russian River. May occur in coastal streams north of San Francisco Bay. Adults need clean, gravelly riffles, Ammocoetes need sandy backwaters or stream edges, good water quality and temps < 25 degrees C.	<b>No Potential.</b> The Study Area does not contain suitable anadromous or estuarine waters.	<b>Not Present.</b> No further actions are recommended for this species.

SPECIES	STATUS*	HABITAT REQUIREMENTS	POTENTIAL TO OCCUR IN THE STUDY AREA	RESULTS AND RECOMMENDATIONS
<i>Mylopharodon conocephalus</i> hardhead	SSC	Known from mid-elevation streams in the Sacramento, San Joaquin, Napa River, and Russian River drainages. Prefer clear, deep pools with sand-gravel-boulder bottoms and slow water velocity.	<b>No Potential.</b> The Study Area does not contain riverine waters.	<b>Not Present.</b> No further actions are recommended for this species.
<i>Oncorhynchus mykiss irideus</i> steelhead - central CA coast DPS	FT	Occurs from the Russian River south to Soquel Creek and Pajaro River. Also in San Francisco and San Pablo Bay Basins. Adults migrate upstream to spawn in cool, clear, well-oxygenated streams. Juveniles remain in fresh water for 1 or more years before migrating downstream to the ocean.	<b>No Potential.</b> The Study Area does not contain suitable anadromous or estuarine waters.	<b>Not Present.</b> No further actions are recommended for this species.
<i>Oncorhynchus tshawytscha</i> Chinook salmon - California coastal ESU	FT	This ESU includes all naturally spawned populations of Chinook salmon from rivers and streams south of the Klamath River (exclusive) to the Russian River (inclusive). Adult numbers depend on pool depth and volume, amount of cover, and proximity to gravel. Water temps >27 degrees C lethal to adults.	<b>No Potential.</b> The Study Area does not contain suitable anadromous or estuarine waters.	<b>Not Present.</b> No further actions are recommended for this species.
<i>Spirinchus thaleichthys</i> longfin smelt	FC, ST, SSC	Euryhaline, nektonic and anadromous. Found in open waters of estuaries, mostly in middle or bottom of water column. Prefer salinities of 15 to 30 ppt but can be found in completely freshwater to almost pure seawater.	<b>No Potential.</b> The Study Area does not contain riverine or estuarine waters.	<b>Not Present.</b> No further actions are recommended for this species.

SPECIES	STATUS*	HABITAT REQUIREMENTS	POTENTIAL TO OCCUR IN THE STUDY AREA	RESULTS AND RECOMMENDATIONS
<b>Invertebrates</b>				
<i>Bombus crotchii</i> Crotch bumblebee	SC	Range largely restricted to California. Favors grassland and scrub habitats. Typical of bumblebees, nests are usually constructed underground. Visits a variety of plants.	<b>Unlikely.</b> The substrate of the Study Area has been disturbed (graded, compacted gravel) to a degree that would preclude nesting.	<b>Presumed Absent.</b> No further actions are recommended for this species.
<i>Bombus occidentalis</i> western bumblebee	SC	Formerly common throughout much of western North America; populations from southern British Columbia to central California have nearly disappeared (Xerces 2015). Occurs in a wide variety of habitat types. Nests are constructed annually in pre-existing cavities, usually on the ground (e.g., mammal burrows). Many plants are visited and pollinated.	<b>Unlikely.</b> The substrate of the Study Area has been disturbed (graded, compacted gravel) to a degree that would preclude nesting.	<b>Presumed Absent.</b> No further actions are recommended for this species.
<i>Branchinecta lynchi</i> vernal pool fairy shrimps	FT	Endemic to the grasslands of the Central Valley, central coast mountains, and south coast mountains, in astatic rain-filled pools. Inhabit small, clear-water sandstone-depression pools and grassed swale, earth slump, or basalt-flow depression pools.	<b>No Potential.</b> The Study Area does not contain vernal pools or other suitable seasonal aquatic features (e.g., swales deep and ponded enough to support this species).	<b>Not Present.</b> No further actions are recommended for this species.

SPECIES	STATUS*	HABITAT REQUIREMENTS	POTENTIAL TO OCCUR IN THE STUDY AREA	RESULTS AND RECOMMENDATIONS
<i>Desmocerus californicus dimorphus</i> valley elderberry longhorn beetle	FT	Known from the Central Valley and adjacent foothills, in riparian and oak savannah where elderberry ( <i>Sambucus</i> sp.), the host plant, is present.	<b>No Potential.</b> Elderberry ( <i>Sambucus</i> sp.) was not observed in the Study Area during the site visits. This species' known range with Napa County is restricted to the easternmost portions (CDFW 2024a).	<b>Not Present.</b> No further actions are recommended for this species.
<i>Speyeria callippe callippe</i> Callippe silverspot butterfly	FE	Two populations are recognized, on San Bruno Mountain and the Cordelia Hills. Host plant is Johnny jump-up ( <i>Viola pedunculata</i> ), which is found on serpentine soils. Most adults found on east-facing slopes; males congregate on hilltops in search of females.	<b>No Potential.</b> Johnny jump-up ( <i>Viola pedunculata</i> ) or other violets ( <i>Viola</i> sp.) was not observed in the Study Area during the site visits. This species' known range with Napa County is restricted to the immediate vicinity of the Cordelia Hills (CDFW 2024a).	<b>Not Present.</b> No further actions are recommended for this species.
<i>Syncaris pacifica</i> California freshwater shrimp	FE, SE	Endemic to Marin, Napa, and Sonoma counties. Found in low elevation, low gradient streams where riparian cover is moderate to heavy. Shallow pools away from main stream flow. Winter: undercut banks with exposed roots. Summer: leafy branches touching water.	<b>No Potential.</b> Although the Study Area contains ephemeral streams; this species is known from perennial streams only. Additionally, the only documented occurrence in Napa County is from Huichica Creek in the southwest portion of the county (Marin and Wicksten 2004, CDFW 2024a).	<b>Not Present.</b> No further actions are recommended for this species.

**\*Key to status codes:**

FC Federal Candidate for Listing

FE Federal Endangered

BGEPA Bald and Golden Eagle Protection Act Species

FT Federal Threatened

SC (E/T) State Candidate for Listing (Endangered/Threatened)

SE State Endangered

SFP State Fully Protected Animal

SR State Rare

SSC State Species of Special Concern

ST State Threatened

LR Locally Rare as per Napa County Baseline Report

CRPR 1A CNPS CRPR 1A: Plants presumed extinct in California

CRPR 1B CNPS CRPR 1B: Plants rare, threatened or endangered in California and elsewhere

CRPR 2A CNPS CRPR 2A: Plants presumed extirpated in California, but more common elsewhere

CRPR 2B CNPS CRPR 2B: Plants rare, threatened, or endangered in California, but more common elsewhere

CRPR 3 CNPS CRPR 3: Plants about which CNPS needs more information (a review list)

CRPR 4 CNPS CRPR 4: Plants of limited distribution (a watch list)

WBWG Western Bat Working Group High or Medium-high Priority Species

**Potential to Occur:**

No Potential: Habitat on and adjacent to the site is clearly unsuitable for the species requirements (cover, substrate, elevation, hydrology, plant community, site history, disturbance regime).

Unlikely: Few of the habitat components meeting the species requirements are present, and/or the majority of habitat on and adjacent to the site is unsuitable or of very poor quality. The species is not likely to be found on the site.

Moderate Potential: Some of the habitat components meeting the species requirements are present, and/or only some of the habitat on or adjacent to the site is unsuitable. The species has a moderate probability of being found on the site.

High Potential: All of the habitat components meeting the species requirements are present and/or most of the habitat on or adjacent to the site is highly suitable. The species has a high probability of being found on the site.

**Results and Recommendations:**

Present: Species was observed on the site or has been recorded (i.e. CNDDDB, other reports) on the site recently.

Assumed Present: Species is assumed to be present on-site based on the presence of key habitat components.

Assumed Present without Impact: Species assumed present; however, project activities will not have an impact on the species.

Presumed Absent: Species is presumed to not be present due to a lack of key habitat components.

Not Present: Species is considered not present due to a clear lack of any suitable habitat and/or local range limitations.

Not Observed: Species was not observed during dedicated/formal surveys.

Presence Unknown: Species has the potential to be present, but no dedicated surveys to determine absence/presence were performed.

## **Appendix D**

### **Representative Photographs**



Proposed Reservoir (PR) location supporting non-native grassland



Proposed Reservoir (PR) location supporting non-native grassland



Casa Paloma (CP) potential spoils area supporting developed areas with adjacent native trees (coast live oak); earthen spoils would be deposited and spread out with light to medium machinery



Paloma Landing (PL) potential spoils area supporting developed areas and non-native grassland (chamise chaparral out of view and outside of the Project Area); earthen spoils would be deposited and spread out with light to medium machinery



Paul's Well (PW) potential spoils area supporting developed areas with adjacent native trees (coast live oak); earthen spoils would be deposited and spread out with light to medium machinery



Yurt Landing (YL) potential spoils area supporting developed areas with adjacent native trees (coast live oak); earthen spoils would be deposited and spread out with light to medium machinery

## **Appendix E**

### **Statement of Qualifications**



## STATEMENT OF QUALIFICATIONS

WRA is an environmental consulting firm with over 30 years of experience conducting biological resources assessments, wetland delineations, protocol-level rare plant surveys, special-status wildlife assessments and species-specific surveys, as well as preparing applications with state and federal natural resource agencies for avoiding, minimizing, and mitigating impacts to sensitive natural resources. Other services and products with which WRA has expertise include preparation of CEQA/NEPA documents, habitat mitigation and monitoring plans, natural resource management plans, mitigation and conservation bank enabling instruments, grazing management plans, and wetland and other natural resources restoration plans.

Aaron Arthur, MS, Associate Plant Biologist with WRA, has nearly 20 years performing vegetation & habitat mapping, rare plant surveys, botanical assessments, vegetation change analysis, and wetland delineations. His project focus is vineyard development, timber resources, coastal development permits, habitat mitigation and monitoring plans, conservation and mitigation banking, and long-term management plans in Sonoma, Marin, Napa, and Mendocino counties. Mr. Arthur's technical training includes the flora of Northern California, the flora of the Pacific Northwest, agrostology, aquatic botany, plant ecology, forest ecology, and soil science. Additionally, he has completed the 40-hour Corps wetland delineation course, holds 2081(a) Plant Voucher Permit, and is Certified California Consulting Botanist #0016 from the California Native Plant Society. Mr. Arthur received his Bachelor of Arts in Geography and received his Master of Science in Physical Geography from Oregon State University, where his research focused on forest floristics and vegetation change.