

September 16, 2024



Jeremy Krout
3333 Michelson Drive, Suite 500
Irvine, CA 92612

Subject: Biological Records Search for APNs 7352-018-067 and -068 located in the city of Torrance, Los Angeles County, California.

Dear Mr. Krout:

Pursuant to your request, Hernandez Environmental Services (HES) conducted a biological records search for the approximate 8.2-acre site located at 2421 W 205th Street (APNs 7352-018-067 and -068) in the city of Torrance, Los Angeles County, California.

Methodology

HES conducted a literature review and reviewed aerial photographs and topographic maps of APN 330-02-131 and the surrounding area. The *Torrance* 7.5' USGS topographic quadrangle and six surrounding quadrangles were used to identify sensitive species in the California Natural Diversity Data Base (CNDDDB). Additional resources reviewed during the literature search included the United States Fish and Wildlife (USFWS) Endangered Species Lists, and the California Native Plant Society's (CNPS) Rare plant lists to obtain species information for the project area.

Site Location

APNs 7352-018-067 and -068 are located within the city of Torrance. The site encompasses an approximate 8.2-acre area located at the southeast corner of the intersection of Crenshaw Boulevard and Del Amo Boulevard (Figure 1, *Location Map*). Specifically, the site is located within Township 3 South, Range 14 West, within the *Torrance* United States Geological Survey (USGS) 7.5-minute topographic quadrangle (Figure 2, *Vicinity Map*). The center point latitude and longitude for the project site are 33°50'45.44" N 118°19'35.65"W. The project site is developed with existing industrial park office buildings surrounded by industrial development to the south, east and west, and residential development to the north.

Results

APNs 7352-018-067 and -068 are relatively flat with elevations ranging from 67 feet to 72 feet above mean sea level. Soils historically mapped on the site by the Natural Resources Conservation Service (NRCS) include Urban land-Centinela-Typic Xerorthents, fine substratum complex, 0 to 2 percent slopes (1013) (Appendix A). According to the City of Torrance General Plan (2009), the site is mapped for industrial business park use. According to the County of Los Angeles GIS Data Viewing Application and recent aerials of the site, the site is currently comprised of developed land (Figure 3, *Habitat Map*).

Based upon aerial and topographic map reviews and a review of the USFWS National Wetlands Inventory Mapping, the site does not contain any streams or drainages or riparian habitat. There are no CDFW, United States Army Corps of Engineers (USACE), or Regional Water Quality Control Board (RWQCB) jurisdictional waters within the project boundaries. Further, the project area does not contain any wetlands or vernal pools.

No designated critical habitat occurs on or within the vicinity of the project site. According to the CNDDDB, a total of 36 sensitive species of plants and 48 sensitive species of wildlife have the potential to occur on or within the vicinity of the site. These include those species listed or candidates for listing by the USFWS, California Department of Fish and Wildlife (CDFW) and CNPS. Based upon the fact that the site is currently developed with industrial uses and is surrounded by heavy urban development in all directions, none of these species has the potential to be present within this report (Appendix B).

Migratory non-game native bird species are protected under the federal Migratory Bird Treaty Act. Additionally, Sections 3503, 3503.5, and 3513 of the California Fish and Game Code prohibit take of all birds and their active nests. Although the site is currently developed with industrial uses, aerial imaging suggests that the site contains landscape trees and shrubs that can support nesting song birds during the nesting bird season of February 1 through September 15. If shrubs will be removed between February 1 and September 15, pre-construction nesting bird surveys will be required.

The site was evaluated for its function as a wildlife corridor that species would use to move between wildlife habitat zones. Typically, mountain canyons or riparian corridors are used by wildlife as corridors; the project site does not contain these features. The site consists of flat, developed land surrounded by heavy urban development such as industrial uses and roadways. No wildlife movement corridors were found to be present on the site.

If you have any questions about this report, please feel free to contact me at (951) 334-6219 with any further questions.

Sincerely,

Shawn Gatchel-Hernandez
Principal Regulatory Specialist

FIGURES

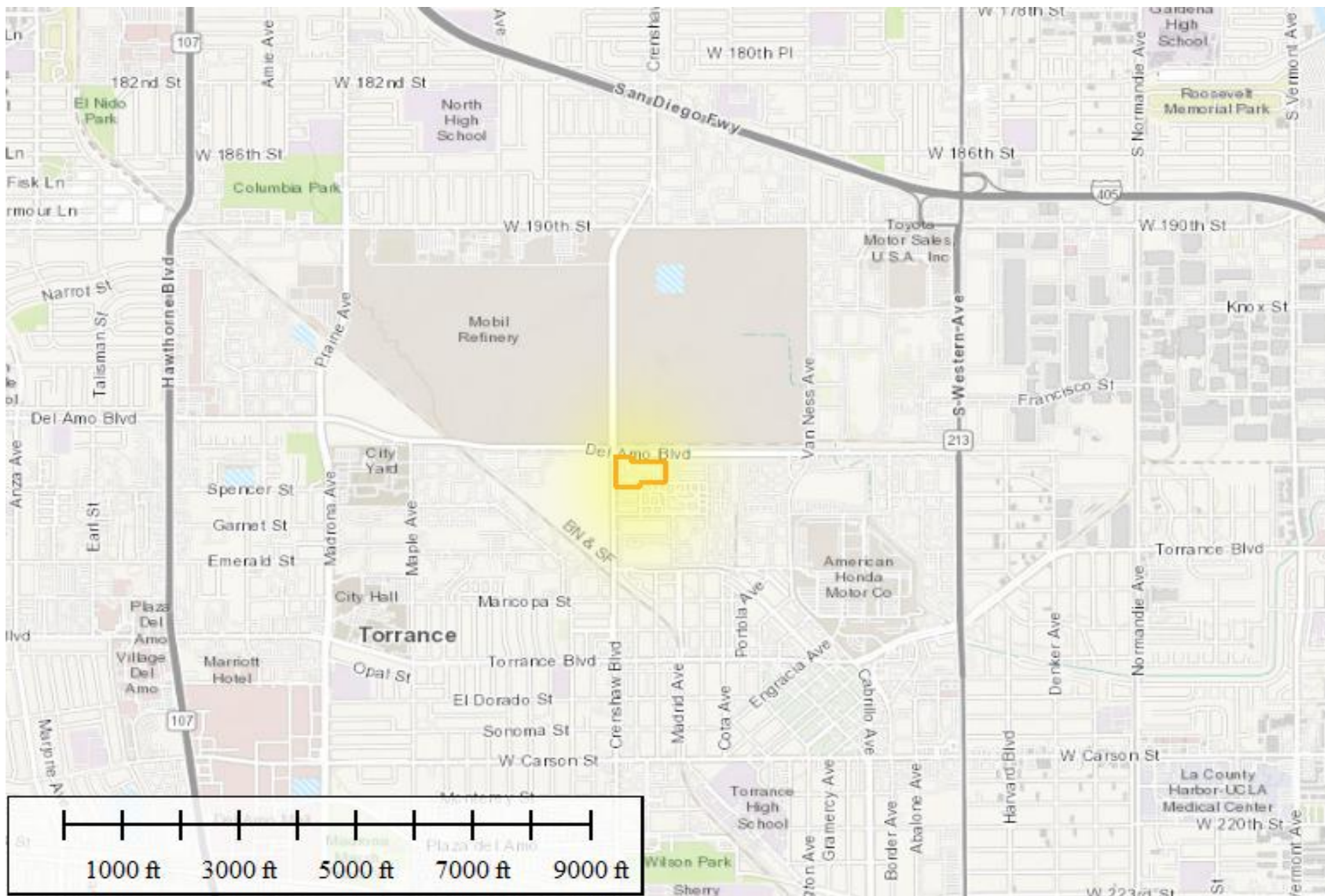


Figure 1
 Location Map
 APNs 7352-018-067 & -068
 City of Torrance
 Los Angeles County, California

Legend

 Project site (8.2 acres)



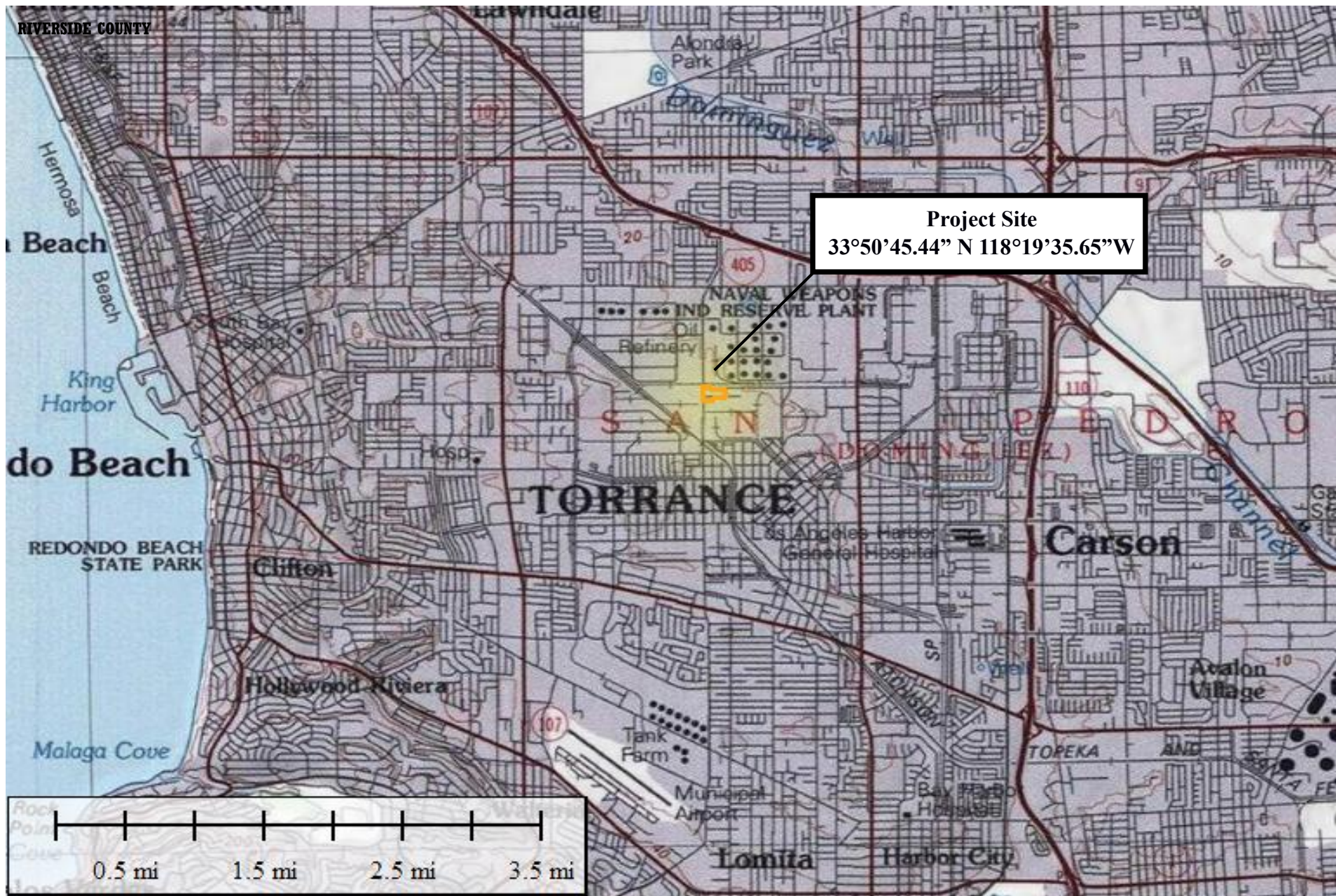



Figure 2
 Vicinity Map
 APNs 7352-018-067 & -068
 City of Torrance
 Los Angeles County, California

Legend
 Project site (8.2 acres)



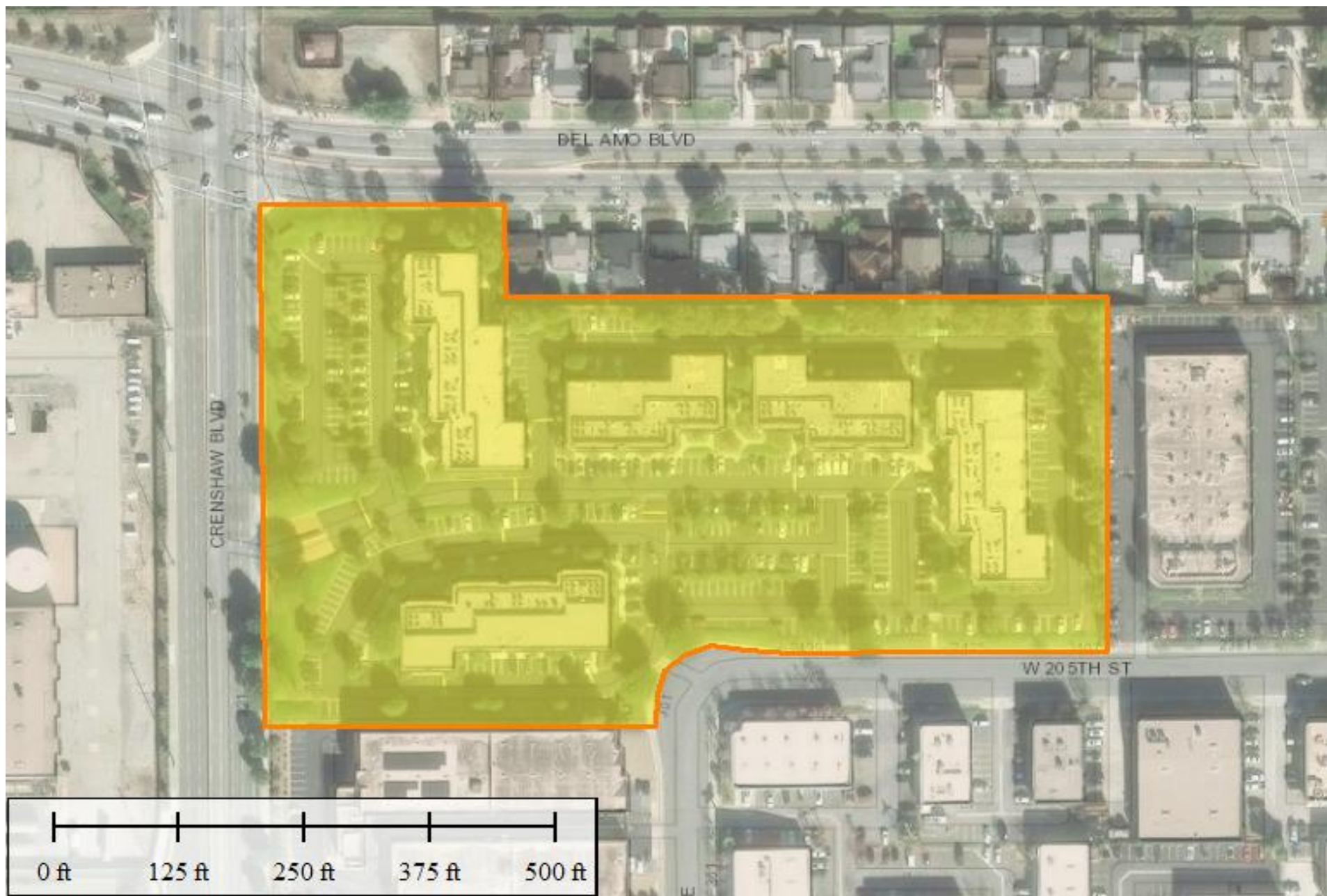




Figure 3
Habitat Map
APNs 7352-018-067 & -068
City of Torrance
Los Angeles County, California

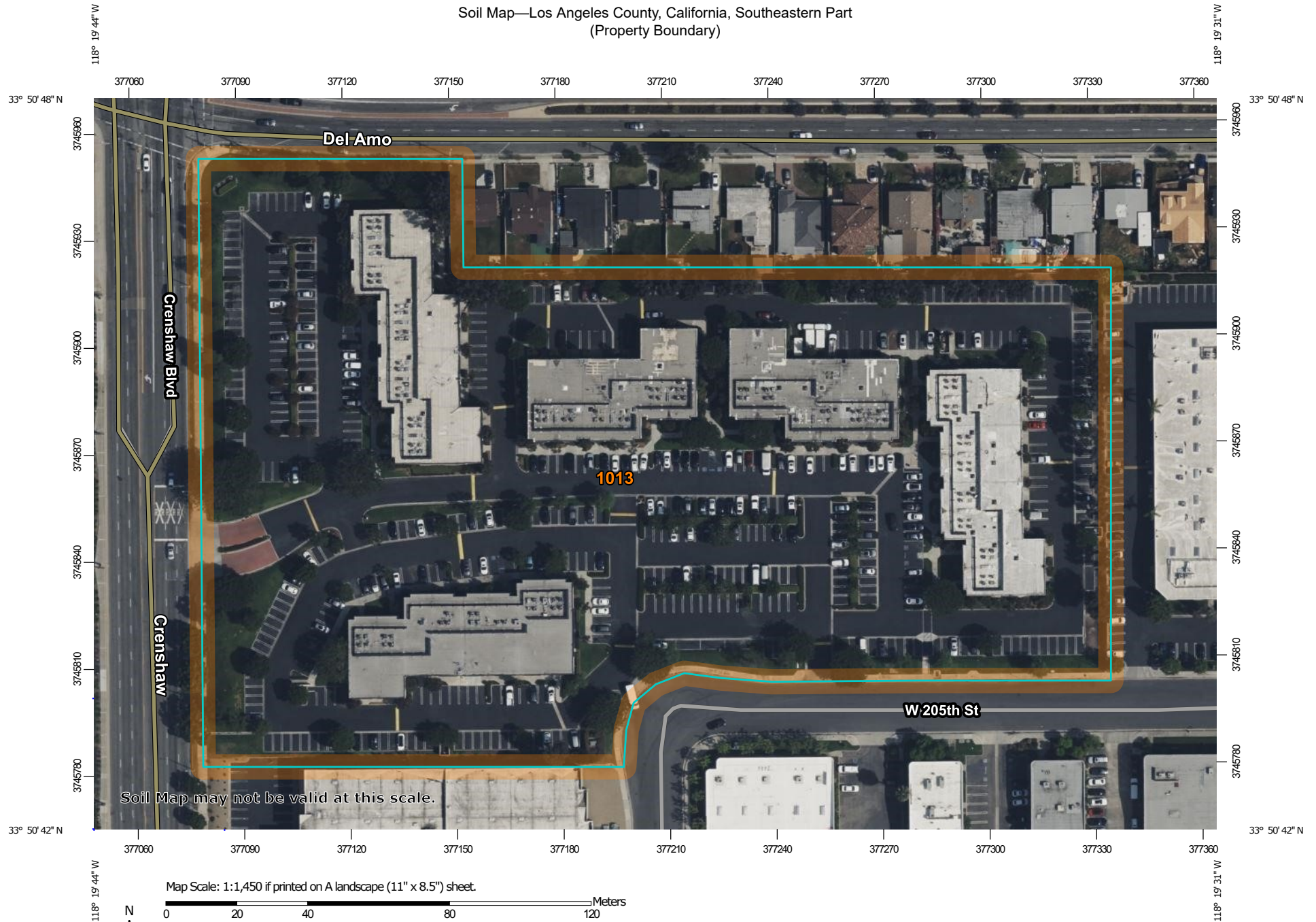
Legend

-  Project site (8.2 acres)
-  Developed Land



APPENDIX A

Soil Map—Los Angeles County, California, Southeastern Part
(Property Boundary)



Soil Map—Los Angeles County, California, Southeastern Part
(Property Boundary)

MAP LEGEND

Area of Interest (AOI)

 Area of Interest (AOI)

Soils

 Soil Map Unit Polygons

 Soil Map Unit Lines

 Soil Map Unit Points

Special Point Features



Blowout



Borrow Pit



Clay Spot



Closed Depression



Gravel Pit



Gravelly Spot



Landfill



Lava Flow



Marsh or swamp



Mine or Quarry



Miscellaneous Water



Perennial Water



Rock Outcrop



Saline Spot



Sandy Spot



Severely Eroded Spot



Sinkhole



Slide or Slip



Sodic Spot



Spoil Area



Stony Spot



Very Stony Spot



Wet Spot



Other



Special Line Features

Water Features



Streams and Canals

Transportation



Rails



Interstate Highways



US Routes



Major Roads



Local Roads

Background



Aerial Photography

MAP INFORMATION

The soil surveys that comprise your AOI were mapped at 1:24,000.

Warning: Soil Map may not be valid at this scale.

Enlargement of maps beyond the scale of mapping can cause misunderstanding of the detail of mapping and accuracy of soil line placement. The maps do not show the small areas of contrasting soils that could have been shown at a more detailed scale.

Please rely on the bar scale on each map sheet for map measurements.

Source of Map: Natural Resources Conservation Service

Web Soil Survey URL:

Coordinate System: Web Mercator (EPSG:3857)

Maps from the Web Soil Survey are based on the Web Mercator projection, which preserves direction and shape but distorts distance and area. A projection that preserves area, such as the Albers equal-area conic projection, should be used if more accurate calculations of distance or area are required.

This product is generated from the USDA-NRCS certified data as of the version date(s) listed below.

Soil Survey Area: Los Angeles County, California, Southeastern Part

Survey Area Data: Version 10, Aug 30, 2023

Soil map units are labeled (as space allows) for map scales 1:50,000 or larger.

Date(s) aerial images were photographed: Apr 14, 2022—Apr 23, 2022

The orthophoto or other base map on which the soil lines were compiled and digitized probably differs from the background imagery displayed on these maps. As a result, some minor shifting of map unit boundaries may be evident.

Map Unit Legend

Map Unit Symbol	Map Unit Name	Acres in AOI	Percent of AOI
1013	Urban land-Centinela-Typic Xerorthents, fine substratum complex, 0 to 2 percent slopes	8.7	100.0%
Totals for Area of Interest		8.7	100.0%

APPENDIX B

Scientific Name	Common Name	Federal	State	Rare Plant Rank	Other Status	Habitats	General Habitat	Micro Habitat	Presence/Absence
Aphanisma blitoides	aphanisma	None	None	1B.2	SB_CRES-San Diego Zoo CRES Native Gene Seed Bank SB_SBBG-Santa Barbara Botanic Garden	Coastal bluff scrub Coastal dunes Coastal scrub	Coastal bluff scrub, coastal dunes, coastal scrub.	On bluffs and slopes near the ocean in sandy or clay soils. 3-305 m.	Not present. No suitable habitat.
Astragalus hornii var. hornii	Horn's milk-vetch	None	None	1B.1	BLM_S-Sensitive	Alkali playa Meadow & seep Wetland	Meadows and seeps, playas.	Lake margins, alkaline sites. 75-350 m.	Not present. No suitable habitat.
Astragalus pycnostachyus var. lanosissimus	Ventura Marsh milk-vetch	Endangered	Endangered	1B.1	SB_CalBG/RS ABG-California/Rancho Santa Ana Botanic Garden SB_SBBG-Santa Barbara Botanic Garden	Coastal dunes Coastal scrub Marsh & swamp Salt marsh Wetland	Marshes and swamps, coastal dunes, coastal scrub.	Within reach of high tide or protected by barrier beaches, more rarely near seeps on sandy bluffs. 1-60 m.	Not present. No suitable habitat.
Astragalus tener var. titi	coastal dunes milk-vetch	Endangered	Endangered	1B.1	SB_CalBG/RS ABG-California/Rancho Santa Ana Botanic Garden	Coastal bluff scrub Coastal dunes Coastal prairie	Coastal bluff scrub, coastal dunes, coastal prairie.	Moist, sandy depressions of bluffs or dunes along and near the Pacific Ocean; one site on a clay terrace. 1-45 m.	Not present. No suitable habitat.

Atriplex coulteri	Coulter's saltbush	None	None	1B.2	SB_CalBG/RS ABG- California/Ran cho Santa Ana Botanic Garden SB_CRES-San Diego Zoo CRES Native Gene Seed Bank	Coastal bluff scrub Coastal dunes Coastal scrub Valley & foothill grassland	Coastal bluff scrub, coastal dunes, coastal scrub, valley and foothill grassland.	Ocean bluffs, ridgetops, as well as alkaline low places. Alkaline or clay soils. 2-460 m.	Not present. No suitable habitat.
Atriplex pacifica	south coast saltscale	None	None	1B.2	SB_CalBG/RS ABG- California/Ran cho Santa Ana Botanic Garden SB_CRES-San Diego Zoo CRES Native Gene Seed Bank	Alkali playa Coastal bluff scrub Coastal dunes Coastal scrub	Coastal scrub, coastal bluff scrub, playas, coastal dunes.	Alkali soils. 1-400 m.	Not present. No suitable habitat.
Atriplex parishii	Parish's brittlescale	None	None	1B.1	SB_CRES-San Diego Zoo CRES Native Gene Seed Bank USFS_S- Sensitive	Alkali playa Chenopod scrub Meadow & seep Vernal pool Wetland	Vernal pools, chenopod scrub, playas.	Usually on drying alkali flats with fine soils. 4-1420 m.	Not present. No suitable habitat.
Atriplex serenana var. davidsonii	Davidson's saltscale	None	None	1B.2	SB_CalBG/RS ABG- California/Ran cho Santa Ana Botanic Garden	Coastal bluff scrub Coastal scrub	Coastal bluff scrub, coastal scrub.	Alkaline soil. 0-480 m.	Not present. No suitable habitat.

Centromadia parryi ssp. australis	southern tarplant	None	None	1B.1	SB_CalBG/RS ABG- California/Ran cho Santa Ana Botanic Garden SB_CRES-San Diego Zoo CRES Native Gene Seed Bank SB_SBBG- Santa Barbara Botanic Garden	Marsh & swamp Salt marsh Valley & foothill grassland Vernal pool Wetland	Marshes and swamps (margins), valley and foothill grassland, vernal pools.	Often in disturbed sites near the coast at marsh edges; also in alkaline soils sometimes with saltgrass. Sometimes on vernal pool margins. 0-975 m.	Not present. No suitable habitat.
Centromadia pungens ssp. laevis	smooth tarplant	None	None	1B.1	SB_CalBG/RS ABG- California/Ran cho Santa Ana Botanic Garden	Alkali playa Chenopod scrub Meadow & seep Riparian woodland Valley & foothill grassland Wetland	Valley and foothill grassland, chenopod scrub, meadows and seeps, playas, riparian woodland.	Alkali meadow, alkali scrub; also in disturbed places. 5-1170 m.	Not present. No suitable habitat.
Chaenactis glabriuscula var. orcuttiana	Orcutt's pincushion	None	None	1B.1	SB_CalBG/RS ABG- California/Ran cho Santa Ana Botanic Garden SB_CRES-San Diego Zoo CRES Native Gene Seed Bank	Coastal bluff scrub Coastal dunes	Coastal bluff scrub, coastal dunes.	Sandy sites. 3-80 m.	Not present. No suitable habitat.

Chenopodium littoreum	coastal goosefoot	None	None	1B.2	SB_SBBG-Santa Barbara Botanic Garden	Coastal dunes	Coastal dunes.	Generally on sandy soils, and on dunes. 5-40 m.	Not present. No suitable habitat.
Chloropyron maritimum ssp. maritimum	salt marsh bird's-beak	Endangered	Endangered	1B.2	BLM_S-Sensitive SB_CalBG/RS ABG-California/Rancho Santa Ana Botanic Garden SB_CRES-San Diego Zoo CRES Native Gene Seed Bank SB_SBBG-Santa Barbara Botanic Garden	Coastal dunes Marsh & swamp Salt marsh Wetland	Marshes and swamps, coastal dunes.	Limited to the higher zones of salt marsh habitat. 0-10 m.	Not present. No suitable habitat.
Chorizanthe parryi var. fernandina	San Fernando Valley spineflower	None	Endangered	1B.1	SB_CalBG/RS ABG-California/Rancho Santa Ana Botanic Garden USFS_S-Sensitive	Coastal scrub Valley & foothill grassland	Coastal scrub, valley and foothill grassland.	Sandy soils. 15-1015 m.	Not present. No suitable habitat.
Crossosoma californicum	Catalina crossosoma	None	None	1B.2	SB_CalBG/RS ABG-California/Rancho Santa Ana Botanic Garden	Chaparral Coastal scrub	Chaparral, coastal scrub.	On rocky sea bluffs, wooded canyons, and dry, open sunny spots on rocky clay. 5-535 m.	Not present. No suitable habitat.

Dithyrea maritima	beach spectaclepod	None	Threatened	1B.1	SB_SBBG-Santa Barbara Botanic Garden	Coastal dunes Coastal scrub	Coastal dunes, coastal scrub.	Sea shores, on sand dunes, and sandy places near the shore. 3-60 m.	Not present. No suitable habitat.
Dudleya virens ssp. insularis	island green dudleya	None	None	1B.2		Coastal bluff scrub Coastal scrub	Coastal bluff scrub, coastal scrub.	Rocky soils. 0-275 m.	Not present. No suitable habitat.
Eryngium aristulatum var. parishii	San Diego button-celery	Endangered	Endangered	1B.1	SB_CalBG/RS ABG-California/Rancho Santa Ana Botanic Garden SB_CRES-San Diego Zoo CRES Native Gene Seed Bank	Coastal scrub Valley & foothill grassland Vernal pool Wetland	Vernal pools, coastal scrub, valley and foothill grassland.	San Diego mesa hardpan and claypan vernal pools and southern interior basalt flow vernal pools; usually surrounded by scrub. 15-880 m.	Not present. No suitable habitat.
Horkelia cuneata var. puberula	mesa horkelia	None	None	1B.1	SB_CalBG/RS ABG-California/Rancho Santa Ana Botanic Garden USFS_S-Sensitive	Chaparral Cismontane woodland Coastal scrub	Chaparral, cismontane woodland, coastal scrub.	Sandy or gravelly sites. 15-1645 m.	Not present. No suitable habitat.
Isocoma menziesii var. decumbens	decumbent goldenbush	None	None	1B.2	BLM_S-Sensitive SB_CRES-San Diego Zoo CRES Native Gene Seed Bank	Chaparral Coastal scrub	Coastal scrub, chaparral.	Sandy soils; often in disturbed sites. 1-915 m.	Not present. No suitable habitat.

Lasthenia glabrata ssp. coulteri	Coulter's goldfields	None	None	1B.1	BLM_S- Sensitive SB_CalBG/RS ABG- California/Ran cho Santa Ana Botanic Garden SB_SBBG- Santa Barbara Botanic Garden	Alkali playa Marsh & swamp Salt marsh Vernal pool Wetland	Coastal salt marshes, playas, vernal pools.	Usually found on alkaline soils in playas, sinks, and grasslands. 1- 1375 m.	Not present. No suitable habitat.
Lycium brevipes var. hassei	Santa Catalina Island desert-thorn	None	None	3.1		Coastal bluff scrub Coastal scrub	Coastal bluff scrub, coastal scrub.	Coastal bluffs and slopes. 30-95 m.	Not present. No suitable habitat.
Nama stenocarpa	mud nama	None	None	2B.2		Marsh & swamp Wetland	Marshes and swamps.	Lake shores, river banks, intermittently wet areas. 15-815 m.	Not present. No suitable habitat.
Navarretia fossalis	spreading navarretia	Threatened	None	1B.1	SB_CalBG/RS ABG- California/Ran cho Santa Ana Botanic Garden SB_CRES-San Diego Zoo CRES Native Gene Seed Bank	Alkali playa Chenopod scrub Marsh & swamp Vernal pool Wetland	Vernal pools, chenopod scrub, marshes and swamps, playas.	San Diego hardpan and San Diego claypan vernal pools; in swales and vernal pools, often surrounded by other habitat types. 15-850 m.	Not present. No suitable habitat.
Navarretia prostrata	prostrate vernal pool navarretia	None	None	1B.2		Coastal scrub Meadow & seep Valley & foothill grassland Vernal pool Wetland	Coastal scrub, valley and foothill grassland, vernal pools, meadows and seeps.	Alkaline soils in grassland, or in vernal pools. Mesic, alkaline sites. 3-1235 m.	Not present. No suitable habitat.

Nemacaulis denudata var. denudata	coast woolly-heads	None	None	1B.2	SB_CalBG/RS ABG- California/Rancho Santa Ana Botanic Garden SB_CRES-San Diego Zoo CRES Native Gene Seed Bank	Coastal dunes	Coastal dunes.	0-5 m.	Not present. No suitable habitat.
Orcuttia californica	California Orcutt grass	Endangered	Endangered	1B.1	SB_CalBG/RS ABG- California/Rancho Santa Ana Botanic Garden SB_CRES-San Diego Zoo CRES Native Gene Seed Bank	Vernal pool Wetland	Vernal pools.	10-660 m.	Not present. No suitable habitat.
Pentachaeta lyonii	Lyon's pentachaeta	Endangered	Endangered	1B.1	SB_CalBG/RS ABG- California/Rancho Santa Ana Botanic Garden	Chaparral Coastal scrub Valley & foothill grassland	Chaparral, valley and foothill grassland, coastal scrub.	Edges of clearings in chaparral, usually at the ecotone between grassland and chaparral or edges of firebreaks. 30-670 m.	Not present. No suitable habitat.
Phacelia stellaris	Brand's star phacelia	None	None	1B.1	SB_CalBG/RS ABG- California/Rancho Santa Ana Botanic Garden	Coastal dunes Coastal scrub	Coastal scrub, coastal dunes.	Open areas. 3-370 m.	Not present. No suitable habitat.
Potentilla multijuga	Ballona cinquefoil	None	None	1A		Meadow & seep	Meadows and seeps.	Brackish meadows. 0-2 m.	Not present. No suitable habitat.

Sidalcea neomexicana	salt spring checkerbloom	None	None	2B.2	USFS_S-Sensitive	Alkali playa Chaparral Coastal scrub Lower montane coniferous forest Mojavean desert scrub Wetland	Playas, chaparral, coastal scrub, lower montane coniferous forest, Mojavean desert scrub.	Alkali springs and marshes. 3-2380 m.	Not present. No suitable habitat.
Southern Coastal Bluff Scrub	Southern Coastal Bluff Scrub	None	None			Coastal bluff scrub			Not present.
Southern Coastal Salt Marsh	Southern Coastal Salt Marsh	None	None			Marsh & swamp Wetland			Not present.
Southern Dune Scrub	Southern Dune Scrub	None	None			Coastal dunes			Not present.
Suaeda esteroa	estuary seablite	None	None	1B.2		Marsh & swamp Salt marsh Wetland	Marshes and swamps.	Coastal salt marshes in clay, silt, and sand substrates. 0-80 m.	Not present. No suitable habitat.
Symphyotrichum defoliatum	San Bernardino aster	None	None	1B.2	SB_CalBG/RS ABG-California/Rancho Santa Ana Botanic Garden SB_CRES-San Diego Zoo CRES Native Gene Seed Bank USFS_S-Sensitive	Cismontane woodland Coastal scrub Lower montane coniferous forest Marsh & swamp Meadow & seep Valley & foothill grassland	Meadows and seeps, cismontane woodland, coastal scrub, lower montane coniferous forest, marshes and swamps, valley and foothill grassland.	Vernally mesic grassland or near ditches, streams and springs; disturbed areas. 3-2045 m.	Not present. No suitable habitat.

Scientific Name	Comon Name	Federal	State	Other Status	Habitats	General Habitat	Micro Habitat	Presence/Absence
Actinemys pallida	southwestern pond turtle	Proposed Threatened	None	BLM_S-Sensitive CDFW_SSC-Species of Special Concern IUCN_VU-Vulnerable USFS_S-Sensitive				Not present. No suitable habitat.
Agelaius tricolor	tricolored blackbird	None	Threatened	BLM_S-Sensitive CDFW_SSC-Species of Special Concern IUCN_EN-Endangered USFWS_BCC-Birds of Conservation Concern	Freshwater marsh Marsh & swamp Swamp Wetland	Highly colonial species, most numerous in Central Valley and vicinity. Largely endemic to California.	Requires open water, protected nesting substrate, and foraging area with insect prey within a few km of the colony.	Not present. No suitable habitat.

Anniella stebbinsi	Southern California legless lizard	None	None	CDFW_SSC-Species of Special Concern USFS_S-Sensitive	Broadleaved upland forest Chaparral Coastal dunes Coastal scrub	Generally south of the Transverse Range, extending to northwestern Baja California. Occurs in sandy or loose loamy soils under sparse vegetation. Disjunct populations in the Tehachapi and Piute Mountains in Kern County.	Variety of habitats; generally in moist, loose soil. They prefer soils with a high moisture content.	Not present. No suitable habitat.
Athene cunicularia	burrowing owl	None	None	BLM_S-Sensitive CDFW_SSC-Species of Special Concern IUCN_LC-Least Concern USFWS_BCC-Birds of Conservation Concern	Coastal prairie Coastal scrub Great Basin grassland Great Basin scrub Mojavean desert scrub Sonoran desert scrub Valley & foothill grassland	Open, dry annual or perennial grasslands, deserts, and scrublands characterized by low-growing vegetation.	Subterranean nester, dependent upon burrowing mammals, most notably, the California ground squirrel.	Not present. No suitable habitat.

Bombus crotchii	Crotch's bumble bee	None	Candidate Endangered	IUCN_EN- Endangered		Coastal California east to the Sierra- Cascade crest and south into Mexico.	Food plant genera include Antirrhinum, Phacelia, Clarkia, Dendromecon, Eschscholzia, and Eriogonum.	Not present. No suitable habitat.
Bombus pennsylvanicus	American bumble bee	None	None	IUCN_VU- Vulnerable	Coastal prairie Great Basin grassland Valley & foothill grassland		Long-tongued; forages on a wide variety of flowers including vetches (Vicia), clovers (Trifolium), thistles (Cirsium), sunflowers (Helianthus), etc. Nests above ground under long grass or underground. Queens overwinter in rotten wood or underground.	Not present. No suitable habitat.

Brennania belkini	Belkin's dune tabanid fly	None	None	IUCN_VU-Vulnerable	Coastal dunes	Sand obligate species known from coastal dunes near Playa del Rey and El Segundo south to Ensenada, Mexico. One of few tabanids not requiring a blood meal for seccessful egg production; adults taken on flowers.	Larvae collected 50 cm beneath surface of sandy soil; presumably burrowing predators with undetermined hosts, likely beetle larvae. Adult flight generally May - July.	Not present. No suitable habitat.
Charadrius nivosus nivosus	western snowy plover	Threatened	None	CDFW_SSC-Species of Special Concern	Great Basin standing waters Sand shore Wetland	Sandy beaches, salt pond levees and shores of large alkali lakes.	Needs sandy, gravelly or friable soils for nesting.	Not present. No suitable habitat.

Cicindela hirticollis gravida	sandy beach tiger beetle	None	None		Coastal dunes	Inhabits areas adjacent to non-brackish water along the coast of California from San Francisco Bay to northern Mexico.	Clean, dry, light- colored sand in the upper zone. Subterranean larvae prefer moist sand not affected by wave action.	Not present. No suitable habitat.
Cicindela latesignata	western beach tiger beetle	None	None		Estuary Mud shore/flats Salt marsh Sand shore	Mudflats and beaches of coastal estuaries from San Diego County to Los Angeles County.	Typically inhabit wet or dry sandy beaches and mud, sand, or salt flats.	Not present. No suitable habitat.
Cicindela senilis frosti	senile tiger beetle	None	None		Mud shore/flats Wetland	Inhabits marine shoreline, from Central California coast south to salt marshes of San Diego. Also found at Lake Elsinore.	Inhabits dark- colored mud in the lower zone and dried salt pans in the upper zone.	Not present. No suitable habitat.

Coccyzus americanus occidentalis	western yellow-billed cuckoo	Threatened	Endangered	BLM_S-Sensitive USFS_S-Sensitive	Riparian forest	Riparian forest nester, along the broad, lower flood-bottoms of larger river systems.	Nests in riparian jungles of willow, often mixed with cottonwoods, with lower story of blackberry, nettles, or wild grape.	Not present. No suitable habitat.
Coelus globosus	globose dune beetle	None	None	IUCN_VU-Vulnerable	Coastal dunes	Inhabitant of coastal sand dune habitat; erratically distributed from Ten Mile Creek in Mendocino County south to Ensenada, Mexico.	Inhabits foredunes and sand hummocks; it burrows beneath the sand surface and is most common beneath dune vegetation.	Not present. No suitable habitat.

Coturnicops noveboracensis	yellow rail	None	None	CDFW_SSC- Species of Special Concern IUCN_LC- Least Concern USFS_S- Sensitive USFWS_BCC- Birds of Conservation Concern	Freshwater marsh Meadow & seep	Summer resident in eastern Sierra Nevada in Mono County.	Freshwater marshlands.	Not present. No suitable habitat.
Danaus plexippus plexippus pop. 1	monarch - California overwintering population	Candidate	None	IUCN_EN- Endangered USFS_S- Sensitive	Closed-cone coniferous forest	Winter roost sites extend along the coast from northern Mendocino to Baja California, Mexico.	Roosts located in wind- protected tree groves (eucalyptus, Monterey pine, cypress), with nectar and water sources nearby.	Not present. No suitable habitat.
Empidonax traillii extimus	southwestern willow flycatcher	Endangered	Endangered		Riparian woodland	Riparian woodlands in Southern California.		Not present. No suitable habitat.

Eugnosta busckana	Busck's gallmoth	None	None		Coastal dunes Coastal scrub	Coastal southern California.	Tiny micro-moth (1 cm) with larva forming galls on host plant Encelia californica (California brittlebush). Adult flight period is during winter, generally from November to February, and have been reported at UV lights and porch lights.	Not present. No suitable habitat.
Eumops perotis californicus	western mastiff bat	None	None	BLM_S-Sensitive CDFW_SSC-Species of Special Concern	Chaparral Cismontane woodland Coastal scrub Valley & foothill grassland	Many open, semi-arid to arid habitats, including conifer and deciduous woodlands, coastal scrub, grasslands, chaparral, etc.	Roosts in crevices in cliff faces, high buildings, trees and tunnels.	Not present. No suitable habitat.

Euphilotes allynii	El Segundo blue butterfly	Endangered	None		Coastal dunes	Restricted to remnant coastal dune habitat in Southern California.	Host plant is Eriogonum parvifolium; larvae feed only on the flowers and seeds; used by adults as major nectar source.	Not present. No suitable habitat.
Glaucopsyche lygdamus palosverdesensis	Palos Verdes blue butterfly	Endangered	None		Coastal scrub	Restricted to the cool, fog-shrouded, seaward side of Palos Verdes Hills, Los Angeles County.	Host plant is Astragalus trichopodus var. lonchus (locoweed).	Not present. No suitable habitat.
Gonidea angulata	western ridged mussel	None	None	IUCN_VU-Vulnerable	Aquatic	Primarily creeks and rivers and less often lakes. Originally in most of state, now extirpated from Central and Southern California.		Not present. No suitable habitat.

Habroscelimorpha gabbii	western tidal-flat tiger beetle	None	None		Estuary Mud shore/flats	Inhabits estuaries and mudflats along the coast of Southern California.	Generally found on dark-colored mud in the lower zone; occasionally found on dry saline flats of estuaries.	Not present. No suitable habitat.
Lasionycteris noctivagans	silver-haired bat	None	None	IUCN_LC- Least Concern	Lower montane coniferous forest Oldgrowth Riparian forest	Primarily a coastal and montane forest dweller, feeding over streams, ponds and open brushy areas.	Roosts in hollow trees, beneath exfoliating bark, abandoned woodpecker holes, and rarely under rocks. Needs drinking water.	Not present. No suitable habitat.
Laterallus jamaicensis coturniculus	California black rail	None	Threatened	BLM_S-Sensitive CDFW_FP-Fully Protected IUCN_EN-Endangered	Brackish marsh Freshwater marsh Marsh & swamp Salt marsh Wetland	Inhabits freshwater marshes, wet meadows and shallow margins of saltwater marshes bordering larger bays.	Needs water depths of about 1 inch that do not fluctuate during the year and dense vegetation for nesting habitat.	Not present. No suitable habitat.

Microtus californicus stephensi	south coast marsh vole	None	None	CDFW_SSC- Species of Special Concern		Tidal marshes in Los Angeles, Orange and southern Ventura counties.		Not present. No suitable habitat.
Neotoma lepida intermedia	San Diego desert woodrat	None	None	CDFW_SSC- Species of Special Concern	Coastal scrub	Coastal scrub of Southern California from San Diego County to San Luis Obispo County.	Moderate to dense canopies preferred. They are particularly abundant in rock outcrops, rocky cliffs, and slopes.	Not present. No suitable habitat.
Nyctinomops femorosaccus	pocketed free-tailed bat	None	None	CDFW_SSC- Species of Special Concern IUCN_LC- Least Concern	Joshua tree woodland Pinon & juniper woodlands Riparian scrub Sonoran desert scrub	Variety of arid areas in Southern California; pine-juniper woodlands, desert scrub, palm oasis, desert wash, desert riparian, etc.	Rocky areas with high cliffs.	Not present. No suitable habitat.

Nyctinomops macrotis	big free-tailed bat	None	None	CDFW_SSC- Species of Special Concern IUCN_LC- Least Concern		Low-lying arid areas in Southern California.	Need high cliffs or rocky outcrops for roosting sites. Feeds principally on large moths.	Not present. No suitable habitat.
Onychobaris langei	Lange's El Segundo Dune weevil	None	None		Coastal dunes	Known from El Segundo Dunes.		Not present. No suitable habitat.
Panoquina errans	wandering (=saltmarsh) skipper	None	None	IUCN_NT- Near Threatened	Marsh & swamp Wetland	Southern California coastal salt marshes.	Requires moist saltgrass for larval development.	Not present. No suitable habitat.
Passerculus sandwichensis beldingi	Belding's savannah sparrow	None	Endangered	USFWS_BCC- Birds of Conservation Concern	Marsh & swamp Wetland	Inhabits coastal salt marshes, from Santa Barbara south through San Diego County.	Nests in Salicornia on and about margins of tidal flats.	Not present. No suitable habitat.
Pelecanus occidentalis californicus	California brown pelican	Delisted	Delisted	BLM_S- Sensitive USFS_S- Sensitive		Colonial nester on coastal islands just outside the surf line.	Nests on coastal islands of small to moderate size which afford immunity from attack by ground-dwelling predators. Roosts communally.	Not present. No suitable habitat.

Pelochrista hennei	Henne's eucosman moth	None	None		Coastal dunes	Coastal sand dunes with host Phacelia ramosissima. Originally believed to be endemic to the El Segundo sand dunes of Los Angeles County where the type specimen was collected. Also collected from coastal San Luis Obispo County.	Larval foodplant is Phacelia ramosissima var austrolitoralis; larvae can be found on woody stems and upper root parts.	Not present. No suitable habitat.
Perognathus longimembris pacificus	Pacific pocket mouse	Endangered	None	CDFW_SSC- Species of Special Concern	Coastal scrub	Inhabits the narrow coastal plains from the Mexican border north to El Segundo, Los Angeles County.	Seems to prefer soils of fine alluvial sands near the ocean, but much remains to be learned.	Not present. No suitable habitat.

Phrynosoma blainvillii	coast horned lizard	None	None	BLM_S-Sensitive CDFW_SSC-Species of Special Concern IUCN_LC-Least Concern	Chaparral Cismontane woodland Coastal bluff scrub Coastal scrub Desert wash Pinon & juniper woodlands Riparian scrub Riparian woodland Valley & foothill grassland	Frequents a wide variety of habitats, most common in lowlands along sandy washes with scattered low bushes.	Open areas for sunning, bushes for cover, patches of loose soil for burial, and abundant supply of ants and other insects.	Not present. No suitable habitat.
Polioptila californica californica	coastal California gnatcatcher	Threatened	None	CDFW_SSC-Species of Special Concern	Coastal bluff scrub Coastal scrub	Obligate, permanent resident of coastal sage scrub below 2500 ft in Southern California.	Low, coastal sage scrub in arid washes, on mesas and slopes. Not all areas classified as coastal sage scrub are occupied.	Not present. No suitable habitat.

Rhaphiomidas terminatus terminatus	El Segundo flower-loving fly	None	None			Presumed extinct but recently discovered on Malaga Dunes, Los Angeles County.	Perched dunes.	Not present. No suitable habitat.
Riparia riparia	bank swallow	None	Threatened	BLM_S-Sensitive IUCN_LC-Least Concern	Riparian scrub Riparian woodland	Colonial nester; nests primarily in riparian and other lowland habitats west of the desert.	Requires vertical banks/cliffs with fine-textured/sandy soils near streams, rivers, lakes, ocean to dig nesting hole.	Not present. No suitable habitat.
Siphateles bicolor mohavensis	Mohave tui chub	Endangered	Endangered	AFS_EN-Endangered CDFW_FP-Fully Protected	Aquatic Artificial flowing waters Artificial standing waters	Endemic to the Mojave River basin, adapted to alkaline, mineralized waters.	Needs deep pools, ponds, or slough-like areas. Needs vegetation for spawning.	Not present. No suitable habitat.
Sorex ornatus salicornicus	southern California saltmarsh shrew	None	None	CDFW_SSC-Species of Special Concern	Salt marsh	Coastal marshes in Los Angeles, Orange and Ventura counties.	Requires dense vegetation and woody debris for cover.	Not present. No suitable habitat.

Spea hammondii	western spadefoot	Proposed Threatened	None	BLM_S-Sensitive CDFW_SSC-Species of Special Concern IUCN_NT-Near Threatened	Cismontane woodland Coastal scrub Valley & foothill grassland Vernal pool Wetland	Occurs primarily in grassland habitats, but can be found in valley-foothill hardwood woodlands.	Vernal pools are essential for breeding and egg-laying.	Not present. No suitable habitat.
Sternula antillarum browni	California least tern	Endangered	Endangered	CDFW_FP-Fully Protected	Alkali playa Wetland	Nests along the coast from San Francisco Bay south to northern Baja California.	Colonial breeder on bare or sparsely vegetated, flat substrates: sand beaches, alkali flats, land fills, or paved areas.	Not present. No suitable habitat.
Streptocephalus woottoni	Riverside fairy shrimp	Endangered	None	IUCN_EN-Endangered	Coastal scrub Valley & foothill grassland Vernal pool Wetland	Endemic to Western Riverside, Orange, and San Diego counties in areas of tectonic swales/earth slump basins in grassland and coastal sage scrub.	Inhabit seasonally astatic pools filled by winter/spring rains. Hatch in warm water later in the season.	Not present. No suitable habitat.

Taxidea taxus	American badger	None	None	CDFW_SSC- Species of Special Concern IUCN_LC- Least Concern	Alkali marsh Alkali playa Alpine Alpine dwarf scrub Bog & fen Brackish marsh Broadleaved upland forest Chaparral Chenopod scrub Cismontane woodland Closed-cone coniferous forest Coastal bluff scrub Coastal dunes Coastal prairie Coastal scrub Desert dunes Desert wash Freshwater marsh Great Basin grassland Great Basin scrub Interior dunes Lone	Most abundant in drier open stages of most shrub, forest, and herbaceous habitats, with friable soils.	Needs sufficient food, friable soils and open, uncultivated ground. Preys on burrowing rodents. Digs burrows.	Not present. No suitable habitat.
---------------	-----------------	------	------	---------------------------------------------------------------------------------	---------------------------------------------------------------------------------------------------------------------------------------------------------------------------------------------------------------------------------------------------------------------------------------------------------------------------------------------------------------------------------------------------------------------------------------------------------------------------------------	-----------------------------------------------------------------------------------------------------------------------------	---------------------------------------------------------------------------------------------------------------------------------------	--------------------------------------

Thamnophis sirtalis pop. 1	south coast gartersnake	None	None	CDFW_SSC- Species of Special Concern	Artificial standing waters Marsh & swamp Riparian scrub Riparian woodland South coast flowing waters South coast standing waters Wetland	Southern California coastal plain from Ventura County to San Diego County, and from sea level to about 850 m.	Marsh and upland habitats near permanent water with good strips of riparian vegetation.	Not present. No suitable habitat.
Trigonoscuta dorothea dorothea	Dorothy's El Segundo Dune weevil	None	None		Coastal dunes	Coastal sand dunes in Los Angeles County.		Not present. No suitable habitat.
Tryonia imitator	mimic tryonia (=California brackishwater snail)	None	None	IUCN_DD- Data Deficient	Aquatic Brackish marsh Estuary Lagoon Marsh & swamp Salt marsh Wetland	Inhabits coastal lagoons, estuaries and salt marshes, from Sonoma County south to San Diego County.	Found only in permanently submerged areas in a variety of sediment types; able to withstand a wide range of salinities.	Not present. No suitable habitat.

Vireo bellii pusillus	least Bell's vireo	Endangered	Endangered		Riparian forest Riparian scrub Riparian woodland	Summer resident of Southern California in low riparian in vicinity of water or in dry river bottoms; below 2000 ft.	Nests placed along margins of bushes or on twigs projecting into pathways, usually willow, Baccharis, mesquite.	Not present. No suitable habitat.
--------------------------	--------------------	------------	------------	--	------------------------------------------------------------------	---------------------------------------------------------------------------------------------------------------------------------------------	--------------------------------------------------------------------------------------------------------------------------------------	--------------------------------------