



## Preliminary Arborist Report

---

**University Station**  
451 El Camino Real  
Santa Clara, CA

**PREPARED FOR:**  
Bixby Land Company  
1501 Quail Street #230  
Newport Beach, CA 92660

**PREPARED BY:**  
HortScience | Bartlett Consulting  
2550 Ninth Street  
Berkeley, CA 94710

**March 2024**

**Updated August 7, 2024**



# Preliminary Arborist Report

University Station  
451 El Camino Real  
Santa Clara, CA

## Table of Contents

---

	<b>Page</b>
Introduction and Overview	1
Tree Assessment Methods	1
Description of Trees	2
Santa Clara Tree Protection Requirements	6
Suitability for Preservation	7
Estimated Values	8
Preliminary Evaluation of Impacts and Recommendations	9
Preliminary Tree Preservation Guidelines	9

---

## List of Tables

---

Table 1. Condition ratings and frequency of occurrence of trees	2
Table 2. Tree suitability for preservation	8

## Exhibits

---

***Tree Assessment Form***

***Tree Assessment Plan***

***Tree Disposition and Estimated Value***

# Preliminary Arborist Report

University Station  
451 El Camino Real  
Santa Clara, CA

## ***Introduction and Overview***

Bixby Land Company is planning to redevelop the property located at 451 El Camino Real in both Santa Clara and San Jose, CA. The property consisted of 4 large buildings and two parking structures. The property was bordered to the north by Caltrain, Santa Clara University Residence Hall to the east, a hotel and commercial plaza to the west and El Camino Real to the south. The San Jose section was located at the far east edge of the project and only incorporated a small parking lot section and landscape beds. HortScience | Bartlett Consulting (Divisions of The F. A. Bartlett Tree Expert Co.) was asked to conduct a tree inventory and prepare an **Arborist Report** for the trees potentially impacted by the project as required by the City of Santa Clara.

This report provides the following information:

1. An assessment of each tree's health, structure, suitability for preservation, and protected status within and adjacent to the proposed project area.
2. Appraised value of each tree using the methods described in Guide for Plant Appraisal, 10<sup>th</sup> Ed., International Society of Arboriculture, 2018.
3. An assessment of the impacts on trees within and adjacent to the construction footprint and recommendations for action.
4. Tree Preservation Guidelines for tree preservation throughout the planned demolition and construction phases of the project.

## ***Tree Assessment Methods***

Trees were assessed on March 20, 2024. The assessment included all trees with a trunk diameter of 4 inches or larger within the project boundary. Trees were tagged #35 – 257. The assessment procedure consisted of the following steps:

1. Identifying the tree species.
2. Tagging trees with an identifying number and recording their location on a map.
3. Measuring the trunk diameter at a point 54 inches above grade.
4. Evaluating the health and structural condition using a scale of 1 – 5:
  - 5 - A healthy, vigorous tree, reasonably free of signs and symptoms of disease, with good structure and form typical of the species.
  - 4 - Tree with slight decline in vigor, small amount of twig dieback, minor structural defects that could be corrected.
  - 3 - Tree with moderate vigor, moderate twig, and small branch dieback, thinning of crown, poor leaf color, moderate structural defects that might be mitigated with regular care.
  - 2 - Tree in decline, epicormic growth, extensive dieback of medium to large branches, significant structural defects that cannot be abated.
  - 1 - Tree in severe decline, dieback of scaffold branches and/or trunk; most of foliage from epicormics; extensive structural defects that cannot be abated.
5. Rating the suitability for preservation as “high,” “moderate” or “low.” Suitability for preservation considers the health, age and structural condition of the tree, and its potential to remain an asset to the site for years to come.

- High:** Trees with good health and structural stability that have the potential for longevity at the site.
- Moderate:** Trees with somewhat declining health and/or structural defects than can be abated with treatment. The tree will require more intense management and monitoring and may have shorter life span than those in 'good' category.
- Low:** Trees in poor health or with significant structural defects that cannot be mitigated. Tree is expected to continue to decline, regardless of treatment. The species or individual may have characteristics that are undesirable for landscapes, and generally are unsuited for use areas.

### Description of Trees

Two hundred twenty-three (223) trees were assessed, representing 16 species (Table 1). Most species were ornamental trees common in the South Bay area. Coast redwood and coast live oak are native to California but are not indigenous to this site. Overall, 176 (79%) were in fair condition, 26 trees (12%) were good, and 21 trees (9%) were in poor condition. Descriptions of each tree are found in the **Tree Assessment Form** and approximate locations are shown on the **Tree Assessment Plan** (see Exhibits).

**Table 1: Condition ratings and frequency of occurrence of trees.  
 University Station - 451 El Camino Real, Santa Clara, CA**

Common Name	Scientific Name	Condition			Total
		Poor (1-2)	Fair (3)	Good (4-5)	
Strawberry tree	<i>Arbutus unedo</i>	-	9	3	<b>12</b>
Dragon tree	<i>Dracaena draco</i>	-	10	-	<b>10</b>
Bronze loquat	<i>Eriobotrya deflexa</i>	1	6	1	<b>8</b>
Blue gum	<i>Eucalyptus globulus</i>	-	1	-	<b>1</b>
Maidenhair tree	<i>Ginkgo biloba</i>	-	1	-	<b>1</b>
Crape myrtle	<i>Lagerstroemia indica</i>	1	10	1	<b>12</b>
Olive	<i>Olea europaea</i>	-	1	-	<b>1</b>
Photinia	<i>Photinia fraseri</i>	2	-	-	<b>2</b>
Chinese pistache	<i>Pistacia chinensis</i>	-	15	-	<b>15</b>
London plane	<i>Platanus x hispanica</i>	1	22	6	<b>29</b>
Purpleleaf plum	<i>Prunus cerasifera</i>	11	41	-	<b>52</b>
Coast live oak	<i>Quercus agrifolia</i>	2	-	-	<b>2</b>
Coast redwood	<i>Sequoia sempervirens</i>	-	4	5	<b>9</b>
Windmill palm	<i>Trachycarpus fortunei</i>	1	1	-	<b>2</b>
Chinese elm	<i>Ulmus parvifolia</i>	1	9	-	<b>10</b>
Mexican fan palm	<i>Washingtonia robusta</i>	-	38	7	<b>45</b>
<b>Total</b>		<b>21</b>	<b>176</b>	<b>26</b>	<b>223</b>

One-quarter (52 trees) of all trees assessed were purpleleaf plums. All trees had the typical plum form with small crowns and multiple attachments between 3-6 feet (Photo 1). Forty-one (41) were in fair condition and 11 were poor. Trees in poor condition had poor structure and form, and branch dieback. Trees in fair condition had better branch architecture and moderate vigor with less branch or twig dieback.

**Photo 1.** Purpleleaf plum #121 had fair structure and form with multiple attachments at 3 feet.



Forty-five (45) Mexican fan palms were growing either adjacent to buildings or lining the parking lots. Of the 45 palms, 38 were in fair condition with good leaf color and typical fan palm form of a long, slender trunk and pineapple crown (Photo 2). Seven (7) palms were in good condition with green fronds and full crowns. The palms had between 40-50 feet of brown trunk.



**Photo 2 (left).** Mexican fan palms #81 (L) – 78 (R) were in fair condition with long, slender trunks and full pineapple crowns.

Of the 29 London plane trees, 22 were in fair condition, 6 were good and #44 was poor. All trees were semi-mature in development with an average trunk diameter of 11.3 inches. Trees in fair condition had either good or fair form, medium-size crowns and minimal twig dieback. Trees in good condition had fuller crowns and stronger branch structures.

Fifteen (15) Chinese pistache trees were all in fair condition. They had small, round crowns with fair branch structures. The average trunk diameter was just under 8 inches. Trees #115 – 119 were located off-site between the hotel and parking lot.

Of the 12 strawberry trees, nine were in fair condition while #120, 159 and 160 were in good condition with full crowns with good structure and form (Photo 3). Trees in fair condition had medium crowns and multiple attachments between 6 – 10 feet. All trees were young or semi-mature in development with trunk diameters ranging between 4 – 15 inches, averaging just under 12 inches.

**Photo 3.** Strawberry tree #120 was in good condition with good structure and form and a full crown.



Twelve (12) Canary Island date palms were growing throughout the site. Eight palms were in fair condition with variable frond color and density. Most had approximately 20 feet of brown trunk and an average diameter of 25 inches. Palms #57, 122 and 135 were in good condition with full crowns and good frond color (Photo 4). Palm #150 was in poor condition with frond dieback and small live fronds.



**Photo 4.** Canary Island date palm #122 was in good condition with a full crown and good frond color.

Twelve (12) crape myrtles were growing around the site. Ten (10) were in fair condition with the majority having multiple attachments at the base. They had small crowns with fair form. Crape myrtle # 70 was in poor condition with multiple attachments at the base leading to poor structure and form. Crape myrtle #89 was in good condition with a 7 inch diameter trunk and a full crown.

All 10 Chinese elm trees were growing in a parking lot island in the middle of the site. Elms #222, 230 and 231 were located just off-site, while elms #223 – 229 split the property line. Nine (9) elms were in fair condition with thin crowns and minor twig and branch dieback. Elm #223 was in poor condition with major branch dieback and a 7 inch diameter trunk. The average trunk diameter was 9 inches.

Ten (10) dragon trees were in fair condition. They all had multiple attachments near 7 feet with small crowns and decay on their trunks. Trunk diameters averaged 11 inches.

Of the nine coast redwoods, five were in good condition growing on the east side of the property. They had the typical upright structure and form with full crowns and good leaf color. Four trees were in fair condition with thinner crowns, twig dieback and browning leaf color. The average trunk diameter was 14 inches, all trees were young in development.

**Photo 5.** Coast redwood #111 was in fair condition with a thin crown and browning leaves.



Eight bronze loquats were mostly found on the north side of the south building. They had small crowns with multiple attachments at 6 feet. The trunk diameters ranged between 4 – 9 inches with an average of just under 7 inches. Six loquats were in fair condition, #213 was poor with major branch dieback and #216 was in good condition with a larger, full crown.

**Photo 6.** Bronze loquats #218 (L) – 216 (R) were in either fair or good condition with fair form.



The remaining six species were each represented by two or fewer trees. These included:

- Coast live oaks #63 and 68 were in poor condition growing in a group of trees on the east side. Both had multiple attachments near the base. Ivy engulfed #63 from top to bottom.
- Photinias #64 and 67 were in poor condition with multiple attachments at the base. Ivy engulfed the trunks and they both had poor form.
- Windmill palms #164 and 165 were located 2 feet from the south side of the south building. Palm #164 was in poor condition with very few living fronds and the trunk was in contact with the building. Palm #165 was in fair condition with a small crown.
- European olive #36 had multiple attachments at the base with poor form and a small crown. Trunk diameter had a sum total of 13 inches.
- Blue gum #110 was located off-site on Caltrain property. It had a large crown and large branch dieback. The tree was in fair condition with an estimated diameter of 18 inches.

- Maidenhair tree #156 was in fair condition, with an immature developing crown and codominant trunks at 6 feet. The trunk diameter was 6 inches.

### ***Santa Clara Tree Protection Requirements***

The City of Santa Clara (Municipal Code Chapter 12.35) protects the following species with a diameter of 12 inches when measured at 54 inches above grade: California buckeye, bigleaf maple, deodar cedar, blue Atlas cedar, camphor, western sycamore, coast redwood, California bay laurel, and five species of native oaks (coast live oak, valley oak, black oak, blue oak, and interior live oak).

The City of Santa Clara also protects *Heritage* trees, approved development trees, and private trees of any species with a diameter of 38 inches or more at 54 inches above grade. Multi-stemmed trees with a diameter of 38 inches or more, when measured below the first major trunk fork, are also *Protected*. *Heritage* trees are specific trees adopted by the City of Santa Clara and listed in the General Plan Appendix 8.10. There were no *Heritage* trees identified at this site. Seven (7) coast redwood trees (#39, 41, 43, 45, 55, 111 and 113) were over 12-inch diameter, are considered *Significant* and have *Protected* status. Additional trees on-site were likely approved development trees and are considered *Protected*. A permit is required to remove any *Protected* tree.

Santa Clara requires a replacement ratio of 2:1 for multi-family housing with 24-inch box-size trees or 4:1 ratio with 15-gallon trees. If it is not feasible to provide the number required, alternative means of replacement or cash in lieu may be authorized by the Director of Community Development.

### **Suitability for Preservation**

Before evaluating the impacts that will occur during development, it is important to consider the quality of the tree resource itself, and the potential for individual trees to function well over an extended length of time. Trees that are preserved on development sites must be carefully selected to make sure that they may survive development impacts, adapt to a new environment and perform well in the landscape.

Our goal is to identify trees that have the potential for long-term health, structural stability, and longevity. For trees growing in open fields, away from areas where people and property are present, structural defects and/or poor health present a low risk of damage or injury if they fail.

We must be concerned, however, about safety in use areas. Therefore, where development encroaches into existing plantings, we must consider their structural stability as well as their potential to grow and thrive in a new environment. Where development will not occur, the normal life cycles of decline, structural failure, and death should be allowed to continue.

Evaluation of suitability for preservation considers several factors:

- **Tree health**  
Healthy, vigorous trees are better able to tolerate impacts such as root injury, demolition of existing structures, changes in soil grade and moisture, and soil compaction than non-vigorous trees are. The majority of the coast redwoods were in good condition and would tolerate impacts much better than the purpleleaf plums in poor condition.
- **Structural integrity**  
Trees with significant amounts of wood decay and other structural defects that cannot be corrected are more likely to fail. Such trees should not be preserved in areas where damage to people or property is likely. Off-site blue gum #110 had large dead branches overhanging the project area.
- **Species response**  
There is a wide variation in the response of individual species to construction impacts and changes in the environment. For example, coast redwood and London plane have good tolerance to construction impacts, however, trees respond best with irrigation following site disturbance. Chinese elm has good tolerance to root injury.
- **Tree age and longevity**  
Old trees, while having significant emotional and aesthetic appeal, have limited physiological capacity to adjust to an altered environment. Young trees are better able to generate new tissue and respond to change. Most trees were semi-mature in development within the project area.
- **Invasiveness**  
Species which spread across a site and displace desired vegetation are not always appropriate for retention. This is particularly true when indigenous species are displaced. The California Invasive Plant Inventory Database (<https://www.cal-ipc.org/paf/>) lists species identified as being invasive. Blue gum, Canary Island palm, and purpleleaf plum have limited invasive qualities. Mexican fan palm is moderately invasive.

Each tree was rated for suitability for preservation based upon its age, health, structural condition, and ability to safely coexist within a development environment (See **Tree Assessments** in Exhibits, and Table 2). We consider trees with high suitability for preservation to be the best candidates for preservation. We do not normally recommend the retention of trees with low suitability for preservation in areas where people or property will be present. Retention of trees with moderate suitability for preservation depends upon the intensity of proposed site changes.

**Table 2: Tree suitability for preservation.  
451 El Camino Real, Santa Clara**

---

<b>High</b>	Trees in good health and with structural stability that have the potential for longevity at the site. Canary Island palm #57 had high suitability for preservation.
<b>Moderate</b>	Trees in fair health and/or with structural defects that may be abated with treatment. Trees in this category require more intense management and monitoring and may have shorter lifespans than those in the "high" category. One hundred fifty-nine (159) trees had moderate suitability for preservation including 44 Mexican fan palms, 24 London planes, 19 purpleleaf plums, 14 Chinese pistache, 12 strawberry trees, 10 crape myrtles, nine Canary Island date palms, nine dragon trees, seven bronze loquats, six coast redwoods, four Chinese elms and maidenhair tree #156.
<b>Low</b>	Trees in poor health or with significant defects in structure that cannot be abated with treatment. These trees can be expected to decline regardless of management. The species or individual tree may possess either characteristics that are undesirable in landscape settings or be unsuited for use areas. Sixty-three (63) trees including 33 purpleleaf plums, six Chinese elms, five London planes, coast redwoods #111, 112 and 113, crape myrtles #38 and 70, coast live oaks #63 and 68, photinia #64 and 67, Canary Island date palms #150 and 160, windmill palm #164 and 165, olive #36, dragon tree #48, blue gum #110, Mexican fan palm #125, Chinese pistache #182 and bronze loquat #213 had low suitability for preservation.

---

### **Estimate of Value**

The City of Santa Clara required Bixby Land Company to provide the estimated value for all trees. To accomplish this, I used the standard methods found in *Guide for Plant Appraisal*, 10th edition (published in 2018 by the International Society of Arboriculture, Champaign IL). In addition, I referred to *Species Classification and Group Assignment* (2004), a publication of the Western Chapter of the International Society of Arboriculture. These two documents outline the methods employed in tree appraisal.

The reproduction cost of landscape trees is based on four factors: size, condition, functional limitations and external limitations. Size is measured as trunk diameter 54" above grade. Condition reflects the health and structural integrity of the individual, as noted in the **Tree Assessment** (see Exhibits). Functional limitations consider the interaction of the tree with its planting site currently and for the foreseeable future. I did not identify any external limitations at this site. The estimated value of the total of all trees was \$348,425. Tree values are listed individually in the **Tree Disposition and Estimated Values** form.

### **Preliminary Evaluations of Impacts and Recommendations**

Appropriate tree retention develops a practical match between the location and intensity of construction activities with the quality and health of trees. The **Tree Assessment** was the reference point for tree condition and quality. To evaluate the impacts of the project, I reviewed the Preliminary Site Plan C3.0 and 3.1, Preliminary Utility Plan C4.0 and 4.1, Preliminary Grading and Drainage Sheet C5.0 (KTGY, 5/29/24).

The project proposes demolishing the existing buildings and infrastructure. The proposed buildings and amenities will be constructed on most of the site, leaving little opportunity for tree preservation. The greatest opportunities for tree preservation are located at the edge of development along the northwest parking lot island, the south island shared with the adjacent property, and along the southeast corner, adjacent to the existing sidewalk.

Based on my assessment of the plans, 176 trees (7 *Significant* and 168 *Protected* approved development trees) will be removed, and 47 *Protected* approved development trees will be preserved. The value of trees proposed for removal was \$275,775 and the value of trees to be preserved was \$72,650. All of the proposed removals were within the footprint of the proposed housing and roadways. The preservation of these trees would result in an undeveloped site, and the tree species, size, health and existing site constraints are not conducive for relocation. Of the 176 removals, all trees have *Protected* status and will require a permit for removal. All trees off-site will all preserved (see **Tree Disposition and Estimated Value Form** in the **Exhibits**).

Tree preservation is predicated on strict adherence to the **Tree Preservation Guidelines**. Replacement trees are required at a 2:1 ratio equating to 352 trees, 24-inch box-size.

### **Preliminary Tree Preservation Guidelines**

The goal of tree preservation is not merely tree survival during development but maintenance of tree health and beauty for many years. Trees retained on sites that are either subject to extensive injury during construction or are inadequately maintained become a liability rather than an asset. The response of individual trees depends on the amount of excavation and grading, care with which demolition is undertaken, and construction methods. Coordinating any construction activity inside the **TREE PROTECTION ZONE** can minimize these impacts.

Trees planned for preservation are growing in parking lot islands and landscape beds. Fencing should be located at the edge of the existing hardscape for trees #60 – 68. Fencing (4-6 foot tall chain link, mounted on 2-inch diameter posts, spaced at no more than 10 feet apart) should enclose the entire area out to the edge of the dripline and along the sidewalk adjacent to Campbell Avenue. Chinese pistache #114 – 119 should have fencing placed along the entire east edge of the parking lot landscape bed. Trees #220 – 243 and 251 – 257 will also require narrow fencing to enclose the linear planting bed from curb to curb. Blue gum #110 was located off-site on the north side and should have 10 feet of fencing encircling the tree.

The following recommendations will help reduce impacts to trees from development and maintain and improve their health and vitality through the clearing, grading, and construction phases. Once site plans are developed, site-specific tree protection recommendations can be provided.

#### **Tree Protection Zone**

1. **A TREE PROTECTION ZONE** shall be identified for each tree to be preserved on the Tree Protection Plan prepared by the project arborist.
  - a. Fence all trees to be preserved at the edge of the curbing to enclose the planting beds. This will incorporate much of the dripline. Fencing should be installed prior to

demolition, grubbing or grading. Fences shall be 4-6 foot chain link with posts sunk into the ground or equivalent as approved by the City.

- b. Fences must be installed prior to beginning demolition and must remain until construction is complete.
- c. No grading, excavation, construction, or storage or dumping of materials shall occur within the **TREE PROTECTION ZONE**.
- d. No underground services including utilities, sub-drains, water, or sewer shall be placed in the **TREE PROTECTION ZONE**.

### Design recommendations

1. Any changes to the plans affecting the trees should be reviewed by the consulting arborist with regard to tree impacts. These include, but are not limited to, site plans, improvement plans, utility and drainage plans, grading plans, landscape and irrigation plans, and demolition plans.
2. Plot accurate locations of all trees to be preserved on all project plans. Identify the **TREE PROTECTION ZONE** for each tree. Create a Tree Protection Plan showing the location of the **TREE PROTECTION ZONE** for each tree. For design purposes, the Tree Protection Zone shall be defined as the area 1 foot away from construction activities shown in the reviewed plans.
3. Plan for tree preservation by designing adequate space around trees to be preserved. This is the **TREE PROTECTION ZONE**: No grading, excavation, construction, or storage of materials should occur within that zone. Route underground services including utilities, sub-drains, water, or sewer around the **TREE PROTECTION ZONE**.
4. Consider the vertical clearance requirements near trees during design. Avoid designs that would require pruning more than 20% of a tree's canopy.
5. Irrigation systems must be designed so that no trenching severs roots larger than 1" in diameter will occur within the **TREE PROTECTION ZONE**.
6. **Tree Preservation Guidelines** prepared by the Consulting Arborist, which include specifications for tree protection during demolition and construction, should be included on all plans.
7. Any herbicides placed under paving materials must be safe for use around trees and labeled for that use.
8. Do not lime the subsoil within 50 feet of any tree. Lime is toxic to tree roots.
9. As trees withdraw water from the soil, expansive soils may shrink within the root area. Therefore, foundations, footings, and pavements on expansive soils near trees should be designed to withstand differential displacement.
10. Ensure adequate but not excessive water is supplied to trees; in most cases occasional irrigation will be required. Avoid directing runoff toward trees.

### Pre-demolition and pre-construction treatments and recommendations

1. The demolition and construction superintendents shall meet with the Consulting Arborist before beginning work to review all work procedures, access routes, storage areas, and tree protection measures.

2. Where demolition must occur close to trees, such as removing curb and pavement, install temporary trunk protection devices such as winding silt sock wattle around tree trunks to a height of approximately 5 feet. Any low branches that are within the work zone should also be protected. Remove trunk protection after demolition is completed and install protective fences at the limits of the tree protection zone. Do not retain wattling around tree trunks for more than 2-3 weeks to avoid damaging trunks from excess moisture. This may be necessary for trees along the southern border, linear parking lot island.
3. Apply and maintain 4-6 inches wood chip mulch within the **TREE PROTECTION ZONE**. Keep the mulch 2 feet from the base of tree trunks.
4. Prune trees to be preserved to clean the crown of dead branches 1" and larger in diameter, raise canopies as needed for construction activities.
  - a. Do not remove more than 20-25% of each tree's crown.
  - b. All pruning shall be done by a State of California Licensed Tree Contractor (C61/D49). All pruning shall be done by Certified Arborist or Certified Tree Worker in accordance with the Best Management Practices for Pruning (International Society of Arboriculture, 2002) and adhere to the most recent editions of the American National Standard for Tree Care Operations (Z133.1) and Pruning (A300).
  - c. Branches extending into the work area that can remain following demolition shall be tied back and protected from damage.
  - d. While in the tree, the arborist shall perform an aerial inspection to identify any defects, weak branch and trunk attachments and decay not visible from the ground. Any additional work needed to mitigate defects shall be reported to the property owner.
5. Tree(s) to be removed that have branches extending into the canopy of tree(s) or located within the **TREE PROTECTION ZONE** of tree(s) to remain shall be removed by a Certified Arborist or Certified Tree Worker and not by the demolition contractor. The Certified Arborist or Certified Tree Worker shall remove the trees in a manner that causes no damage to the tree(s) and understory to remain. Stumps shall be ground below grade.
6. Trees to be removed shall be felled so as to fall away from **TREE PROTECTION ZONE** and avoid pulling and breaking of roots of trees to remain. If roots are entwined, the Consulting Arborist may require first severing the major woody root mass before extracting the trees or grinding the stump below ground.
7. Structures and underground features to be removed within the **TREE PROTECTION ZONE** shall use equipment that will minimize damage to trees above and below ground and operate from outside the **TREE PROTECTION ZONE**. Tie back branches and wrap trunks with protective materials to protect from injury as directed by the Project arborist. The Project arborist shall be on-site during all operations within the **TREE PROTECTION ZONE** to monitor demolition activity.
8. All tree work shall comply with the Migratory Bird Treaty Act as well as California Fish and Wildlife code 3503-3513 to not disturb nesting birds. To the extent feasible tree pruning and removal should be scheduled outside of the breeding season. Breeding bird



surveys should be conducted prior to tree work. Qualified biologists should be involved in establishing work buffers for active nests.

### **Recommendations for tree protection during construction**

1. Any approved grading, construction, demolition, or other work within the **TREE PROTECTION ZONE** should be monitored by the Consulting Arborist.
2. All contractors shall conduct operations in a manner that will prevent damage to trees to be preserved.
3. Tree protection devices are to remain until all site work has been completed within the work area. Fences or other protection devices may not be relocated or removed without permission of the Consulting Arborist.
4. Construction trailers, traffic and storage areas must remain outside **TREE PROTECTION ZONE** at all times.
5. Any root pruning required for construction purposes shall receive the prior approval of and be supervised by the Consulting Arborist. Roots should be cut with a saw to provide a flat and smooth cut. Removal of roots larger than 2 inches in diameter should be avoided.
6. If roots 2 inches and greater in diameter are encountered during site work and must be cut to complete the construction, the Consulting Arborist must be consulted to evaluate the effects on the health and stability of the tree and recommend treatment.
7. Any brush clearing required within the **TREE PROTECTION ZONE** shall be accomplished with hand-operated equipment.
8. Trees to be removed shall be felled so as to fall away from **TREE PROTECTION ZONE** and avoid pulling and breaking of roots of trees to remain. If roots are entwined, the Consulting Arborist may require first severing the major woody root mass before extracting the trees or grinding the stump below ground.
9. All down brush and trees shall be removed from the **TREE PROTECTION ZONE** either by hand, or with equipment sitting outside the **TREE PROTECTION ZONE**. Extraction shall occur by lifting the material out, not by skidding across the ground.
10. Prior to grading or trenching, trees may require root pruning outside the **TREE PROTECTION ZONE**. Any root pruning required for construction purposes shall receive the prior approval of, and be supervised by, the Consulting Arborist.
11. Spoil from trench, footing, utility, or other excavation shall not be placed within the **TREE PROTECTION ZONE**, neither temporarily nor permanently.
12. All grading within the dripline of trees shall be done using the smallest equipment possible. The equipment shall operate perpendicular to the tree and operate from outside the **TREE PROTECTION ZONE**. Any modifications must be approved and monitored by the Consulting Arborist. Hand work including the use of an air spade, high pressure water or picks and shovels is recommended for all trenching necessary within the TPZ.
13. All trees shall be irrigated on a schedule to be determined by the Consulting Arborist (every 3 to 6 weeks is typical). Each irrigation shall wet the soil within the **TREE PROTECTION ZONE** to a depth of 30 inches.
14. If injury should occur to any tree during construction, it should be evaluated as soon as possible by the Consulting Arborist so that appropriate treatments can be applied.
15. No excess soil, chemicals, debris, equipment, or other materials shall be dumped or stored within the **TREE PROTECTION ZONE**.

16. Any additional tree pruning needed for clearance during construction must be performed by a Certified Arborist and not by construction personnel.
17. Trees that accumulate a sufficient quantity of dust on their leaves, limbs and trunk as judged by the Consulting Arborist shall be spray-washed at the direction of the Project Arborist.

#### **Maintenance of impacted trees**

Preserved trees will experience a physical environment different from that pre-development. As a result, tree health and structural stability should be monitored. Occasional pruning, fertilization, mulch, pest management, replanting and irrigation may be required. In addition, provisions for monitoring both tree health and structural stability following construction must be made a priority. Inspect trees annually and following major storms to identify conditions requiring treatment to manage risk associated with tree failure.

Our procedures included assessing trees for observable defects in structure. This is not to say that trees without significant defects will not fail. Failure of apparently defect-free trees does occur, especially during storm events. Wind forces, for example, can exceed the strength of defect-free wood causing branches and trunks to break. Wind forces coupled with rain can saturate soils, reducing their ability to hold roots, and blow over defect-free trees. Although we cannot predict all failures, identifying those trees with observable defects is a critical component of enhancing public safety.

Furthermore, trees change over time. Our inspections represent the condition of the tree at the time of inspection. As trees age, the likelihood of failure of branches or entire trees increases. Annual tree inspections are recommended to identify changes to tree health and structure. In addition, trees should be inspected after storms of unusual severity to evaluate damage and structural changes. Initiating these inspections is the responsibility of the client and/or tree owner.

If you have any questions about my observations or recommendations, please contact me.

#### **HortScience | Bartlett Consulting**



Scott Stringer  
Consulting Arborist & Urban Forester  
ISA Certified Arborist, WE-5544A  
ISA Tree Risk Assessment Qualified



## **Exhibits**

---

**Tree Assessment Form**

**Tree Assessment Plan**

**Tree Disposition and Estimated Value Form**



# Tree Assessment

451 El Camino Real  
Santa Clara, CA  
May 2024



Tree No.	Species	Trunk Diameter (in.)	Circumfrance (in.)	Protected Tree?	Condition 1=poor 5=excellent	Suitability for Preservation	Comments
35	Crape myrtle	5,5,4,4,4,3,3	101	No	3	Moderate	Multiple attachments at 1'; poor form; medium crown.
36	Olive	2,2,2,2,2,1	41	No	3	Low	Multiple attachments at base'; poor form; small crown.
37	Purpleleaf plum	9	28	No	2	Low	Major crown dieback; poor form.
38	Crape myrtle	6,3,3,3,2,2,2,2	79	No	3	Low	Multiple attachments at base; poor form; ivy around base.
39	Coast redwood	16	50	Yes	4	Moderate	Upright form; full crown; good leaf color.
40	London plane	5	16	No	3	Moderate	Codominant trunk at 6'; fair form; small crown.
41	Coast redwood	15	47	Yes	4	Moderate	Upright form; full crown; good leaf color.
42	London plane	5	16	No	3	Low	Codominant trunk at 5'; poor form; small crown.
43	Coast redwood	16	50	Yes	4	Moderate	Upright form; full crown; good leaf color.
44	London plane	7,5,4	50	No	2	Low	3 stems at base; west limb failing with crack and decay.
45	Coast redwood	16	50	Yes	4	Moderate	Upright form; full crown; good leaf color.
46	London plane	5,5,4,4	57	No	3	Low	Poor structure; codominant at base; medium crown.
47	Coast redwood	10	31	No	3	Moderate	Fair from; first branch at 8'; small crown.
48	Dragon tree	11	35	No	3	Low	Multiple attachments at 7'; heavy decay on trunk.
49	Dragon tree	12	38	No	3	Moderate	Multiple attachments at 7'; minor decay on trunk.
50	London plane	11	35	No	3	Moderate	Multiple attachments at 7'; fair form; medium crown.
51	Dragon tree	12	38	No	3	Moderate	Multiple attachments at 7'; fair form; decay on trunk.
52	Dragon tree	11	35	No	3	Moderate	Multiple attachments at 7'; fair form; decay on trunk.

# Tree Assessment

451 El Camino Real  
Santa Clara, CA  
May 2024



Tree No.	Species	Trunk Diameter (in.)	Circumfrance (in.)	Protected Tree?	Condition 1=poor 5=excellent	Suitability for Preservation	Comments
53	Dragon tree	11	35	No	3	Moderate	Multiple attachments at 7'; fair form; decay on trunk.
54	Dragon tree	10	31	No	3	Moderate	Multiple attachments at 6'; fair form; decay on trunk.
55	Coast redwood	13	41	Yes	4	Moderate	Upright form; full crown; good leaf color.
56	Purpleleaf plum	5	16	No	3	Low	Small crown; poor form; branch dieback.
57	Canary Island date palm	23	72	No	4	High	20' feet brown trunk; good form; fronds fair color.
58	Mexican fan palm	13	41	No	4	Moderate	40' feet brown trunk; good form; fronds with good color.
59	Mexican fan palm	11	35	No	4	Moderate	40' feet brown trunk; good form; fronds with good color.
60	Mexican fan palm	12	38	No	4	Moderate	40' feet brown trunk; good form; fronds with good color.
61	Canary Island date palm	24	75	No	3	Moderate	20' feet brown trunk; good form; fronds with good color.
62	London plane	18	57	No	3	Moderate	Medium crown; trunk engulfed in ivy up to 10'.
63	Coast live oak	4,3,3,3,2,2,2	60	No	2	Low	Splits property line, poor structure and form; multiple attachments at base; ivy engulfed around most of tree.
64	Photinia	4,3,3,3,2,2,2	60	No	2	Low	Poor structure and form; multiple attachments at base; ivy engulfed around most of tree.
65	London plane	14	44	No	3	Low	Poor structure and form; ivy engulfed around most of tree.
66	London plane	14	44	No	3	Moderate	Fair structure and form; ivy engulfed around most of tree.
67	Photinia	4,3,3,3	41	No	2	Low	Poor structure and form; multiple attachments at 1'.

# Tree Assessment

451 El Camino Real  
Santa Clara, CA  
May 2024



Tree No.	Species	Trunk Diameter (in.)	Circumfrance (in.)	Protected Tree?	Condition 1=poor 5=excellent	Suitability for Preservation	Comments
68	Coast live oak	5,3	25	No	2	Low	Poor structure and form; multiple attachments at 1'; branch dieback.
69	Purpleleaf plum	6	19	No	2	Low	Poor structure and form; multiple attachments at 7'; branch dieback.
70	Crape myrtle	2,1,1,1,1,1	22	No	2	Low	Poor structure and form; multiple attachments at base.
71	Purpleleaf plum	6	19	No	3	Moderate	Fair structure and form; multiple attachments at 6'.
72	Canary Island date palm	30	94	No	3	Moderate	20' brown trunk; pineapple falling off on north side.
73	Purpleleaf plum	7	22	No	2	Low	Branch dieback; poor form; multiple attachments at 6'.
74	Purpleleaf plum	8	25	No	2	Low	Branch dieback; poor form; multiple attachments at 6'.
75	Purpleleaf plum	5,3	25	No	2	Low	Branch dieback; poor form; multiple attachments at 2'.
76	Purpleleaf plum	7	22	No	3	Low	Fair form; multiple attachments at 5'.
77	Canary Island date palm	33	104	No	3	Moderate	20' brown trunk; pineapple sloughing on north side.
78	Mexican fan palm	12	38	No	3	Moderate	50' brown trunk; full pineapple.
79	Mexican fan palm	12	38	No	3	Moderate	50' brown trunk; full pineapple.
80	Mexican fan palm	14	44	No	3	Moderate	50' brown trunk; full pineapple.
81	Mexican fan palm	13	41	No	3	Moderate	50' brown trunk; full pineapple.
82	Purpleleaf plum	5	16	No	2	Low	Branch dieback; poor form; codominant trunk at 6'.
83	Purpleleaf plum	6	19	No	2	Low	Branch dieback; poor form; codominant trunk at 8'.
84	Purpleleaf plum	6	19	No	2	Low	Branch dieback; poor form; codominant trunk at 4'.
85	Mexican fan palm	10	31	No	3	Moderate	50' brown trunk; full pineapple; good color.

# Tree Assessment

451 El Camino Real  
Santa Clara, CA  
May 2024



Tree No.	Species	Trunk Diameter (in.)	Circumfrance (in.)	Protected Tree?	Condition 1=poor 5=excellent	Suitability for Preservation	Comments
86	Mexican fan palm	11	35	No	3	Moderate	50' brown trunk; full pineapple; good color.
87	Mexican fan palm	12	38	No	3	Moderate	50' brown trunk; full pineapple; good color.
88	Crape myrtle	4	13	No	3	Moderate	Small crown; fair form; multiple attachments at 5'.
89	Crape myrtle	7	22	No	4	Moderate	Small, full crown; fair form; multiple attachments at 5'.
90	Crape myrtle	9	28	No	3	Moderate	Small crown; fair form; multiple attachments at 5'.
91	Mexican fan palm	11	35	No	3	Moderate	50' brown trunk; full pineapple; good frond color.
92	Mexican fan palm	11	35	No	3	Moderate	50' brown trunk; full pineapple; good frond color.
93	Purpleleaf plum	6	19	No	3	Moderate	Fair form; multiple attachments at 4'.
94	Purpleleaf plum	7	22	No	2	Low	Branch dieback, poor form; multiple attachments at 5'.
95	Crape myrtle	6	19	No	3	Moderate	Fair form; codominant trunk at 6'; wound at base on west side.
96	Crape myrtle	6	19	No	3	Moderate	Fair form; codominant trunk at 5'; one-sided east.
97	Purpleleaf plum	8	25	No	3	Moderate	Fair form; codominant trunk at 4'; medium crown.
98	Purpleleaf plum	7	22	No	3	Low	Poor form; codominant trunk at 4'; included bark; medium crown.
99	Purpleleaf plum	6	19	No	3	Moderate	Fair form; codominant trunk at 4'; small crown.
100	Purpleleaf plum	9	28	No	3	Moderate	Fair form; codominant trunk at 4'; small crown.
101	Bronze loquat	6	19	No	3	Moderate	Fair form; multiple attachments at 6'; twig dieback.

# Tree Assessment

451 El Camino Real  
Santa Clara, CA  
May 2024



Tree No.	Species	Trunk Diameter (in.)	Circumfrance (in.)	Protected Tree?	Condition 1=poor 5=excellent	Suitability for Preservation	Comments
102	Purpleleaf plum	7	22	No	3	Low	Poor form; multiple attachments at 4'; twig dieback.
103	Purpleleaf plum	7	22	No	3	Low	Poor form; codominant trunk at 4'; twig dieback.
104	Purpleleaf plum	6	19	No	3	Low	Poor form; codominant trunk at 6'; twig dieback.
105	Purpleleaf plum	6	19	No	3	Low	Poor form; codominant trunk at 5'; twig dieback.
106	Purpleleaf plum	6	19	No	3	Low	Poor form; codominant trunk at 5'; twig dieback.
107	Purpleleaf plum	6	19	No	3	Low	Fair form; codominant trunk at 5'; twig dieback.
108	Purpleleaf plum	6	19	No	3	Low	Fair form; codominant trunk at 4'; twig dieback.
109	Purpleleaf plum	6	19	No	3	Low	Fair form; codominant trunk at 4'; twig dieback.
110	Blue gum	18	57	No	3	Low	Off-site; large crown; branch dieback; fair form; no tag; estimated DBH.
111	Coast redwood	15	47	Yes	3	Low	Thin crown; twig dieback; poor leaf color.
112	Coast redwood	11	35	No	3	Low	Thin crown; twig dieback; poor leaf color.
113	Coast redwood	14	44	Yes	3	Low	Thin crown; twig dieback; poor leaf color.
114	Purpleleaf plum	7	22	No	3	Low	Off-site; codominant trunk at 3'; poor form.
115	Chinese pistache	9	28	No	3	Moderate	Off-site; codominant trunk at 5'; 9' overhang.
116	Chinese pistache	7	22	No	3	Moderate	Off-site; codominant trunk at 5'; 9' overhang.
117	Chinese pistache	10	31	No	3	Moderate	Off-site; codominant trunk at 6'; 9' overhang.
118	Chinese pistache	9	28	No	3	Moderate	Off-site; codominant trunk at 6'; 9' overhang.

# Tree Assessment

451 El Camino Real  
Santa Clara, CA  
May 2024



Tree No.	Species	Trunk Diameter (in.)	Circumfrance (in.)	Protected Tree?	Condition 1=poor 5=excellent	Suitability for Preservation	Comments
119	Chinese pistache	11	35	No	3	Moderate	Off-site; codominant trunk at 6'; 9' overhang; 12'x8" trunk wound on south side.
120	Strawberry tree	14	44	No	4	Moderate	Good structure and form; multiple attachments at 7' ; medium crown.
121	Purpleleaf plum	11	35	No	3	Moderate	Fair structure and form; multiple attachments at 3'.
122	Canary Island date palm	20	63	No	4	Moderate	18' brown trunk; full pineapple; good frond color.
123	Mexican fan palm	15	47	No	4	Moderate	50' brown trunk; full pineapple; good frond color.
124	Mexican fan palm	11	35	No	4	Moderate	40' brown trunk; full pineapple; good frond color.
125	Mexican fan palm	11	35	No	3	Low	40' brown trunk; full pineapple; good frond color; irregular trunk.
126	Mexican fan palm	12	38	No	3	Moderate	40' brown trunk; full pineapple; good frond color.
127	Mexican fan palm	13	41	No	3	Moderate	40' brown trunk; full pineapple; good frond color.
128	Mexican fan palm	14	44	No	3	Moderate	40' brown trunk; full pineapple; good frond color.
129	Purpleleaf plum	5	16	No	3	Moderate	Small crown; multiple attachments at 3'; fair form.
130	Purpleleaf plum	9	28	No	3	Low	Multiple attachments at 5'; poor form.
131	Mexican fan palm	11	35	No	3	Moderate	40' brown trunk; full pineapple; green fronds.
132	Mexican fan palm	12	38	No	3	Moderate	40' brown trunk; full pineapple; green fronds.
133	Mexican fan palm	14	44	No	3	Moderate	40' brown trunk; full pineapple; green fronds; thin crown.

# Tree Assessment

451 El Camino Real  
Santa Clara, CA  
May 2024



Tree No.	Species	Trunk Diameter (in.)	Circumfrance (in.)	Protected Tree?	Condition 1=poor 5=excellent	Suitability for Preservation	Comments
134	Mexican fan palm	11	35	No	3	Moderate	40' brown trunk; full pineapple; green fronds.
135	Canary Island date palm	25	79	No	4	Moderate	20' brown trunk; full pineapple; green fronds.
136	Mexican fan palm	10	31	No	3	Moderate	40' brown trunk; full pineapple; green fronds.
137	Mexican fan palm	12	38	No	3	Moderate	40' brown trunk; full pineapple; green fronds.
138	Mexican fan palm	10	31	No	3	Moderate	40' brown trunk; full pineapple; green fronds.
139	Mexican fan palm	12	38	No	3	Moderate	40' brown trunk; full pineapple; green fronds.
140	Canary Island date palm	21	66	No	3	Moderate	20' brown trunk; full pineapple; green fronds.
141	Canary Island date palm	25	79	No	3	Moderate	20' brown trunk; full pineapple; green fronds.
142	Crape myrtle	3,2,2,2,2,2,2	47	No	3	Moderate	Multiple attachments at base; fair form; small crown.
143	Crape myrtle	4,4,4,4,3,3	69	No	3	Moderate	Multiple attachments at base; fair form; small crown.
144	Crape myrtle	3,2,2,2,2,2	44	No	3	Moderate	Multiple attachments at base; fair form; small crown.
145	Crape myrtle	4,4,3,3,3,3,3,2,2	94	No	3	Moderate	Multiple attachments at base; fair form; small crown.
146	Purpleleaf plum	10	31	No	3	Low	Multiple attachments at 5'; fair form; twig dieback; small crown.
147	London plane	13	41	No	3	Moderate	Fair form; codominant trunk at 10'; medium crown.
148	London plane	13	41	No	3	Moderate	Fair form; codominant trunk at 10'; medium crown.

# Tree Assessment

451 El Camino Real  
Santa Clara, CA  
May 2024



Tree No.	Species	Trunk Diameter (in.)	Circumfrance (in.)	Protected Tree?	Condition 1=poor 5=excellent	Suitability for Preservation	Comments
149	London plane	13	41	No	3	Moderate	Fair form; codominant trunk at 8'; medium crown.
150	Canary Island date palm	26	82	No	2	Low	15' brown trunk; frond dieback; small live fronds.
151	London plane	10	31	No	3	Low	Poor form; small crown; headed branches.
152	Strawberry tree	12	38	No	3	Moderate	Good form; medium crown; wound on east side of trunk.
153	Strawberry tree	13	41	No	3	Moderate	Good form; medium crown; codominant trunk at 8'.
154	Strawberry tree	12	38	No	3	Moderate	Good form; medium crown; codominant trunk at 8'; twisted trunk.
155	Strawberry tree	14	44	No	3	Moderate	Good form; medium crown; codominant trunk at 10'.
156	Maidenhair tree	6	19	No	3	Moderate	Fair form; medium crown; codominant trunk at 6'.
157	Strawberry tree	15	47	No	3	Moderate	Fair form; medium crown; multiple attachments at 6'.
158	Strawberry tree	13	41	No	3	Moderate	Fair form; medium crown; multiple attachments at 7'.
159	Strawberry tree	15	47	No	4	Moderate	Good form; medium crown; multiple attachments at 7'.
160	Strawberry tree	14	44	No	4	Moderate	Good form; medium crown; codominant trunk at 7'.
161	Canary Island date palm	29	91	No	3	Low	20' brown trunk; poor frond color.
162	London plane	12	38	No	3	Moderate	Upright form; good structure; medium crown.
163	London plane	14	44	No	3	Moderate	Codominant trunk at 9'; fair form; medium crown.
164	Windmill palm	8	25	No	2	Low	15' brown trunk; poor form; mostly dead.
165	Windmill palm	9	28	No	3	Low	15' brown trunk; small crown.

# Tree Assessment

451 El Camino Real  
Santa Clara, CA  
May 2024



Tree No.	Species	Trunk Diameter (in.)	Circumfrance (in.)	Protected Tree?	Condition 1=poor 5=excellent	Suitability for Preservation	Comments
166	London plane	13	41	No	4	Moderate	Good form; medium crown; slight lean south.
167	London plane	12	38	No	4	Moderate	Good form; medium crown; surface roots.
168	London plane	12	38	No	4	Moderate	Good form; medium crown; surface roots.
169	London plane	12	38	No	4	Moderate	Good form; medium crown; surface roots.
170	Purpleleaf plum	8	25	No	3	Moderate	Fair form; dead branches; multiple attachments at 4'.
171	Purpleleaf plum	8	25	No	3	Moderate	Fair form; twig dieback; multiple attachments at 4'.
172	Purpleleaf plum	10	31	No	3	Moderate	Multiple attachments at 4'; fair form; twig dieback.
173	Bronze loquat	6	19	No	3	Moderate	Codominant trunk at 10'; fair form; small crown.
174	Purpleleaf plum	6	19	No	3	Low	Multiple attachments at 4'; fair form; small crown.
175	Mexican fan palm	12	38	No	4	Moderate	40' brown trunk; good frond color; full pineapple.
176	Mexican fan palm	10	31	No	4	Moderate	40' brown trunk; good frond color; full pineapple.
177	Mexican fan palm	13	41	No	3	Moderate	40' brown trunk; good frond color; full pineapple.
178	Mexican fan palm	11	35	No	3	Moderate	40' brown trunk; good frond color; full pineapple.
179	Purpleleaf plum	8	25	No	3	Moderate	Codominant trunk at 5';-fair form; branch dieback.
180	Chinese pistache	7	22	No	3	Moderate	Codominant trunk at 5'; fair form; branch dieback.
181	Chinese pistache	6	19	No	3	Moderate	Codominant trunk at 6'; fair form.
182	Chinese pistache	5	16	No	3	Low	Codominant trunk at 6'; fair form; low vigor.
183	Chinese pistache	6	19	No	3	Moderate	Codominant trunk at 6'; fair form.

# Tree Assessment

451 El Camino Real  
Santa Clara, CA  
May 2024



Tree No.	Species	Trunk Diameter (in.)	Circumfrance (in.)	Protected Tree?	Condition 1=poor 5=excellent	Suitability for Preservation	Comments
184	Chinese pistache	6	19	No	3	Moderate	Codominant trunk at 6'; fair form.
185	Chinese pistache	8	25	No	3	Moderate	Codominant trunk at 6' and 8' fair form.
186	Chinese pistache	7	22	No	3	Moderate	Codominant trunk at 8' fair form.
187	Chinese pistache	6	19	No	3	Moderate	Codominant trunk at 6'; fair form.
188	Chinese pistache	11	35	No	3	Moderate	Codominant trunk at 6'; fair form.
189	Chinese pistache	8	25	No	3	Moderate	Codominant trunk at 6'; fair form.
190	Purpleleaf plum	8	25	No	3	Moderate	Codominant trunk at 6'; fair form; twig dieback.
191	Purpleleaf plum	7	22	No	3	Moderate	Codominant trunk at 6'; fair form; twig dieback.
192	Purpleleaf plum	10	31	No	3	Moderate	Codominant trunk at 5'; fair form; twig dieback.
193	Purpleleaf plum	7	22	No	3	Moderate	Multiple attachments at 4'; fair form; twig dieback.
194	Dragon tree	13	41	No	3	Moderate	Multiple attachments at 6'; fair form.
195	Dragon tree	12	38	No	3	Moderate	Multiple attachments at 6'; fair form.
196	Dragon tree	11	35	No	3	Moderate	Multiple attachments at 6'; fair form.
197	Dragon tree	9	28	No	3	Moderate	Multiple attachments at 6'; fair form.
198	Strawberry tree	10	31	No	3	Moderate	Codominant trunk at 8' fair form; thin crown; twig dieback.
199	Strawberry tree	5	16	No	3	Moderate	Codominant trunk at 7' fair form; full crown.
200	Strawberry tree	4	13	No	3	Moderate	Codominant trunk at 7' fair form; small crown.
201	Mexican fan palm	11	35	No	3	Moderate	40' brown trunk; full pineapple; good frond color.
202	Mexican fan palm	12	38	No	3	Moderate	40' brown trunk; full pineapple; good frond color.
203	Purpleleaf plum	11	35	No	3	Moderate	Codominant at 4' fair form; small crown.

# Tree Assessment

451 El Camino Real  
Santa Clara, CA  
May 2024



Tree No.	Species	Trunk Diameter (in.)	Circumfrance (in.)	Protected Tree?	Condition 1=poor 5=excellent	Suitability for Preservation	Comments
204	Mexican fan palm	12	38	No	3	Moderate	40' brown trunk; full pineapple; good frond color.
205	Purpleleaf plum	6	19	No	3	Moderate	Small crown; multiple attachments at 3' fair form.
206	Purpleleaf plum	5	16	No	3	Moderate	Small crown; multiple attachments at 3' fair form; decay on south side of trunk.
207	Purpleleaf plum	9	28	No	3	Moderate	Small crown; multiple attachments at 4' fair form.
208	Purpleleaf plum	6	19	No	3	Low	Small crown; codominant trunk at 4'; poor form.
209	Purpleleaf plum	5	16	No	3	Low	Small crown; codominant trunk at 4'; poor form; twig dieback.
210	Purpleleaf plum	6	19	No	3	Low	Small crown; codominant trunk at 4'; fair form; twig dieback.
211	Purpleleaf plum	9	28	No	3	Low	Multiple attachments at 4'; gummosis on trunk; branch dieback.
212	Purpleleaf plum	9	28	No	3	Low	Multiple attachments at 4'; gummosis on trunk; branch dieback.
213	Bronze loquat	4	13	No	2	Low	Branch dieback; poor form.
214	Bronze loquat	6	19	No	3	Moderate	Multiple attachments at 5'; fair form.
215	Bronze loquat	7	22	No	3	Moderate	Multiple attachments at 6'; fair form.
216	Bronze loquat	9	28	No	4	Moderate	Multiple attachments at 6'; full crown, fair form.
217	Bronze loquat	8	25	No	3	Moderate	Multiple attachments at 6'; fair form.
218	Bronze loquat	9	28	No	3	Moderate	Multiple attachments at 6'; fair form; ivy at base.
219	London plane	18	57	No	3	Moderate	Off-site; multiple attachments at 7'; fair form; wide crown; overhangs 18'.
220	Canary Island date palm	22	69	No	3	Moderate	20' brown trunk; good frond color.
221	Mexican fan palm	13	41	No	3	Moderate	40' brown trunk; good frond color.

# Tree Assessment

451 El Camino Real  
Santa Clara, CA  
May 2024



Tree No.	Species	Trunk Diameter (in.)	Circumfrance (in.)	Protected Tree?	Condition 1=poor 5=excellent	Suitability for Preservation	Comments
222	Chinese elm	11	35	No	3	Moderate	Off-site; fair form; thin crown; twig dieback.
223	Chinese elm	7	22	No	2	Low	Splits property line; fair form; thin crown; branch dieback.
224	Chinese elm	7	22	No	3	Low	Splits property line; fair form; thin crown; twig dieback.
225	Chinese elm	10	31	No	3	Low	Splits property line; fair form; thin crown; twig and branch dieback.
226	Chinese elm	11	35	No	3	Moderate	Splits property line; fair form; thin crown; twig and branch dieback.
227	Chinese elm	9	28	No	3	Low	Splits property line; fair form; thin crown; twig and branch dieback.
228	Chinese elm	11	35	No	3	Low	Splits property line; fair form; thin crown; twig and branch dieback.
229	Chinese elm	8	25	No	3	Low	Splits property line; fair form; thin crown; twig and branch dieback.
230	Chinese elm	8	25	No	3	Moderate	Off-site; fair form; dense crown; twig and branch dieback.
231	Chinese elm	9	28	No	3	Moderate	Off-site; fair form; thin crown; twig and branch dieback.
232	Purpleleaf plum	10	31	No	2	Low	Branch dieback; multiple attachments at 4'; poor form.
233	London plane	9	28	No	3	Moderate	Fair form; medium crown; twig dieback.
234	London plane	10	31	No	3	Moderate	Good form; medium crown; twig dieback.
235	London plane	11	35	No	3	Moderate	Good form; medium crown; twig dieback.
236	London plane	10	31	No	3	Moderate	Good form; medium crown; twig dieback.
237	London plane	9	28	No	3	Moderate	Good form; medium crown; twig dieback.
238	London plane	10	31	No	3	Moderate	Good form; medium crown; twig dieback.
239	London plane	10	31	No	4	Moderate	Good form; medium crown; twig dieback.
240	London plane	9	28	No	4	Moderate	Good form; medium crown; twig dieback.

# Tree Assessment

451 El Camino Real  
Santa Clara, CA  
May 2024



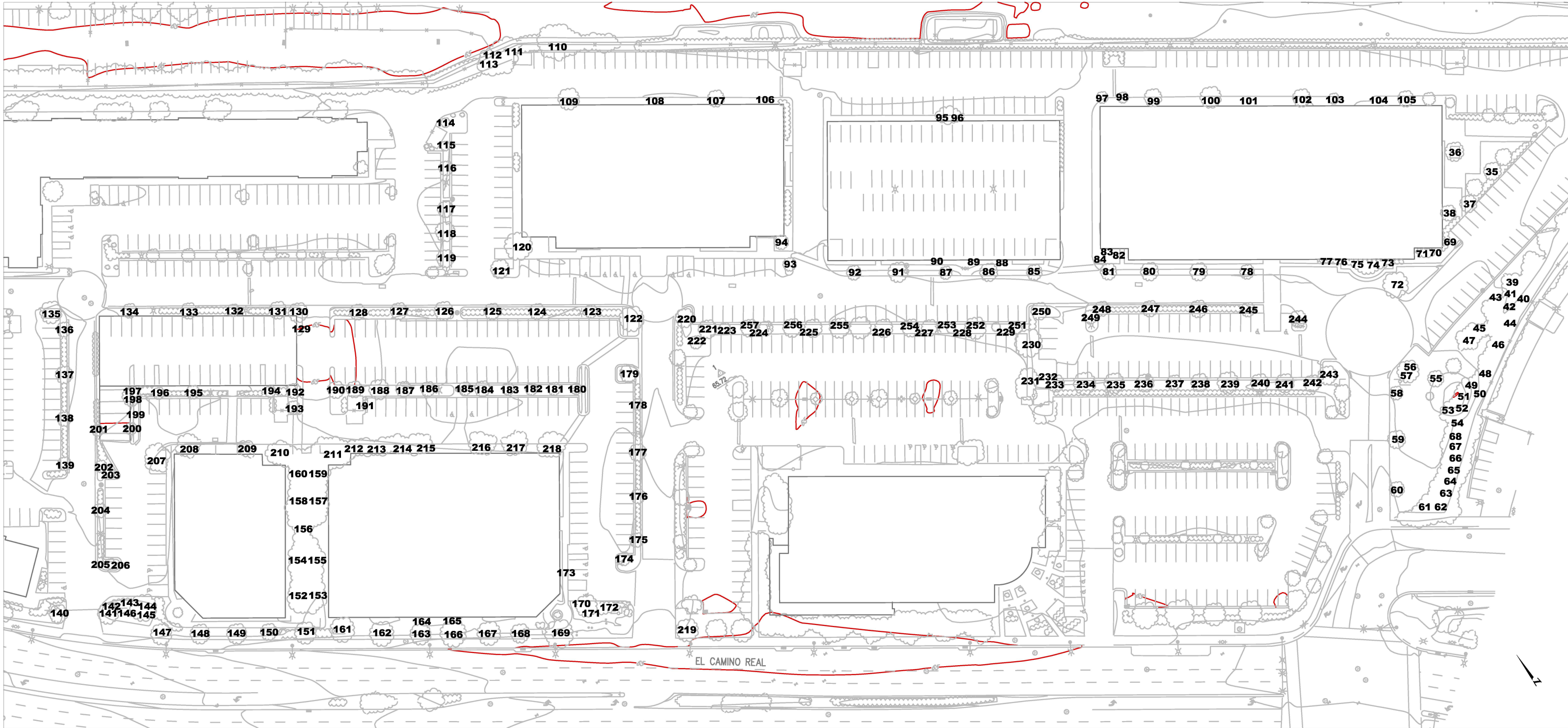
Tree No.	Species	Trunk Diameter (in.)	Circumfrance (in.)	Protected Tree?	Condition 1=poor 5=excellent	Suitability for Preservation	Comments
241	London plane	9	28	No	3	Moderate	Good form; medium crown; twig dieback.
242	London plane	9	28	No	3	Moderate	Good form; medium crown; twig and branch dieback.
243	Canary Island date palm	25	79	No	3	Moderate	20' brown trunk; thin fronds; irregular skirt at base.
244	Purpleleaf plum	7	22	No	3	Low	Small crown; poor form; twig dieback.
245	Mexican fan palm	11	35	No	3	Moderate	40' brown trunk; full pineapple; good frond color.
246	Mexican fan palm	10	31	No	3	Moderate	40' brown trunk; full pineapple; good frond color.
247	Mexican fan palm	12	38	No	3	Moderate	40' brown trunk; full pineapple; good frond color.
248	Mexican fan palm	9	28	No	3	Moderate	40' brown trunk; full pineapple; fair frond color.
249	Purpleleaf plum	6	19	No	3	Low	Codominant trunk; branch dieback; poor form.
250	Purpleleaf plum	9	28	No	2	Low	Multiple attachments at 4'; branch dieback; poor form.
251	Mexican fan palm	12	38	No	3	Moderate	40' brown trunk; full pineapple; good frond color.
252	Mexican fan palm	12	38	No	3	Moderate	40' brown trunk; full pineapple; good frond color.
253	Mexican fan palm	12	38	No	3	Moderate	40' brown trunk; full pineapple; good frond color; no skirt under pineapple.
254	Mexican fan palm	12	38	No	3	Moderate	40' brown trunk; full pineapple; good frond color; no skirt under pineapple.
255	Mexican fan palm	14	44	No	3	Moderate	40' brown trunk; full pineapple; good frond color.
256	Mexican fan palm	12	38	No	3	Moderate	40' brown trunk; full pineapple; good frond color.

# Tree Assessment

451 El Camino Real  
Santa Clara, CA  
May 2024



Tree No.	Species	Trunk Diameter (in.)	Circumfrance (in.)	Protected Tree?	Condition 1=poor 5=excellent	Suitability for Preservation	Comments
257	Mexican fan palm	12	38	No	3	Moderate	40' brown trunk; full pineapple; good frond color.



Notes:

No Scale

Base map provided by:  
CBG  
San Ramon, CA

Numbered tree locations are approximate.

# Tree Disposition & Estimated Values

451 El Camino Real  
Santa Clara, CA  
August 7, 2024



Tree No.	Species	Trunk Diameter (in.)	Circumfrance (in.)	Protected Tree?	Estimated Value	Disposition	Comments
35	Crape myrtle	5,5,4,4,4,3,3	101	No	\$ 1,000	Remove	Within construction footprint.
36	Olive	2,2,2,2,2,1	41	No	\$ 250	Remove	Within construction footprint.
37	Purpleleaf plum	9	28	No	\$ 900	Remove	Within construction footprint.
38	Crape myrtle	6,3,3,3,2,2,2,2	79	No	\$ 900	Remove	Within construction footprint.
39	Coast redwood	16	50	Yes	\$ 3,750	Remove	Within construction footprint.
40	London plane	5	16	No	\$ 400	Remove	Within construction footprint.
41	Coast redwood	15	47	Yes	\$ 3,300	Remove	Within construction footprint.
42	London plane	5	16	No	\$ 400	Remove	Within construction footprint.
43	Coast redwood	16	50	Yes	\$ 3,750	Remove	Within construction footprint.
44	London plane	7,5,4	50	No	\$ 550	Remove	Within construction footprint.
45	Coast redwood	16	50	Yes	\$ 3,750	Remove	Within construction footprint.
46	London plane	5,5,4,4	57	No	\$ 600	Remove	Within construction footprint.
47	Coast redwood	10	31	No	\$ 1,150	Remove	Within construction footprint.
48	Dragon tree	11	35	No	\$ 1,400	Remove	Within construction footprint.
49	Dragon tree	12	38	No	\$ 1,600	Remove	Within construction footprint.
50	London plane	11	35	No	\$ 1,250	Remove	Within construction footprint.
51	Dragon tree	12	38	No	\$ 1,600	Remove	Within construction footprint.
52	Dragon tree	11	35	No	\$ 1,400	Remove	Within construction footprint.
53	Dragon tree	11	35	No	\$ 1,400	Remove	Within construction footprint.
54	Dragon tree	10	31	No	\$ 1,150	Remove	Within construction footprint.
55	Coast redwood	13	41	Yes	\$ 1,150	Remove	Within construction footprint.
56	Purpleleaf plum	5	16	No	\$ 650	Remove	Within construction footprint.
57	Canary Island date palm	23	72	No	\$ 7,500	Remove	Within construction footprint.
58	Mexican fan palm	13	41	No	\$ 1,000	Remove	Within construction footprint.
59	Mexican fan palm	11	35	No	\$ 1,000	Remove	Within construction footprint.
60	Mexican fan palm	12	38	No	\$ 1,000	<b>Preserve</b>	Edge of development.
61	Canary Island date palm	24	75	No	\$ 7,500	Remove	Within construction footprint.

# Tree Disposition & Estimated Values

451 El Camino Real  
 Santa Clara, CA  
 August 7, 2024



Tree No.	Species	Trunk Diameter (in.)	Circumfrance (in.)	Protected Tree?	Estimated Value	Disposition	Comments
62	London plane	18	57	No	\$ 3,050	<b>Preserve</b>	Edge of development.
63	Coast live oak	4,3,3,3,2,2,2	60	No	\$ 300	<b>Preserve</b>	Split ownership, edge of development.
64	Photinia	4,3,3,3,2,2,2	60	No	\$ 400	<b>Preserve</b>	Edge of development.
65	London plane	14	44	No	\$ 1,900	<b>Preserve</b>	Edge of development.
66	London plane	14	44	No	\$ 1,900	<b>Preserve</b>	Edge of development.
67	Photinia	4,3,3,3	41	No	\$ 400	<b>Preserve</b>	Edge of development.
68	Coast live oak	5,3	25	No	\$ 350	<b>Preserve</b>	Edge of development.
69	Purpleleaf plum	6	19	No	\$ 500	Remove	Within construction footprint.
70	Crape myrtle	2,1,1,1,1,1	22	No	\$ 200	Remove	Within construction footprint.
71	Purpleleaf plum	6	19	No	\$ 700	Remove	Within construction footprint.
72	Canary Island date palm	30	94	No	\$ 7,500	Remove	Within construction footprint.
73	Purpleleaf plum	7	22	No	\$ 600	Remove	Within construction footprint.
74	Purpleleaf plum	8	25	No	\$ 750	Remove	Within construction footprint.
75	Purpleleaf plum	5,3	25	No	\$ 500	Remove	Within construction footprint.
76	Purpleleaf plum	7	22	No	\$ 900	Remove	Within construction footprint.
77	Canary Island date palm	33	104	No	\$ 7,500	Remove	Within construction footprint.
78	Mexican fan palm	12	38	No	\$ 1,250	Remove	Within construction footprint.
79	Mexican fan palm	12	38	No	\$ 1,250	Remove	Within construction footprint.
80	Mexican fan palm	14	44	No	\$ 1,250	Remove	Within construction footprint.
81	Mexican fan palm	13	41	No	\$ 1,250	Remove	Within construction footprint.
82	Purpleleaf plum	5	16	No	\$ 400	Remove	Within construction footprint.
83	Purpleleaf plum	6	19	No	\$ 500	Remove	Within construction footprint.
84	Purpleleaf plum	6	19	No	\$ 500	Remove	Within construction footprint.
85	Mexican fan palm	10	31	No	\$ 1,250	Remove	Within construction footprint.
86	Mexican fan palm	11	35	No	\$ 1,250	Remove	Within construction footprint.

# Tree Disposition & Estimated Values

451 El Camino Real  
Santa Clara, CA  
August 7, 2024



Tree No.	Species	Trunk Diameter (in.)	Circumfrance (in.)	Protected Tree?	Estimated Value	Disposition	Comments
87	Mexican fan palm	12	38	No	\$ 1,250	Remove	Within construction footprint.
88	Crape myrtle	4	13	No	\$ 450	Remove	Within construction footprint.
89	Crape myrtle	7	22	No	\$ 1,300	Remove	Within construction footprint.
90	Crape myrtle	9	28	No	\$ 1,500	Remove	Within construction footprint.
91	Mexican fan palm	11	35	No	\$ 1,250	Remove	Within construction footprint.
92	Mexican fan palm	11	35	No	\$ 1,250	Remove	Within construction footprint.
93	Purpleleaf plum	6	19	No	\$ 700	Remove	Within construction footprint.
94	Purpleleaf plum	7	22	No	\$ 600	Remove	Within construction footprint.
95	Crape myrtle	6	19	No	\$ 750	Remove	Within construction footprint.
96	Crape myrtle	6	19	No	\$ 750	Remove	Within construction footprint.
97	Purpleleaf plum	8	25	No	\$ 1,150	Remove	Within construction footprint.
98	Purpleleaf plum	7	22	No	\$ 900	Remove	Within construction footprint.
99	Purpleleaf plum	6	19	No	\$ 700	Remove	Within construction footprint.
100	Purpleleaf plum	9	28	No	\$ 1,400	Remove	Within construction footprint.
101	Bronze loquat	6	19	No	\$ 700	Remove	Within construction footprint.
102	Purpleleaf plum	7	22	No	\$ 900	Remove	Within construction footprint.
103	Purpleleaf plum	7	22	No	\$ 900	Remove	Within construction footprint.
104	Purpleleaf plum	6	19	No	\$ 700	Remove	Within construction footprint.
105	Purpleleaf plum	6	19	No	\$ 700	Remove	Within construction footprint.
106	Purpleleaf plum	6	19	No	\$ 700	Remove	Within construction footprint.
107	Purpleleaf plum	6	19	No	\$ 700	Remove	Within construction footprint.
108	Purpleleaf plum	6	19	No	\$ 700	Remove	Within construction footprint.
109	Purpleleaf plum	6	19	No	\$ 700	Remove	Within construction footprint.
110	Blue gum	18	57	No	\$ 2,500	<b>Preserve</b>	Off-site, branches overhang site.
111	Coast redwood	15	47	Yes	\$ 1,800	Remove	Within construction footprint.
112	Coast redwood	11	35	No	\$ 1,050	Remove	Within construction footprint.
113	Coast redwood	14	44	Yes	\$ 1,550	Remove	Within construction footprint.

# Tree Disposition & Estimated Values

451 El Camino Real  
Santa Clara, CA  
August 7, 2024



Tree No.	Species	Trunk Diameter (in.)	Circumfrance (in.)	Protected Tree?	Estimated Value	Disposition	Comments
114	Purpleleaf plum	7	22	No	\$ 900	<b>Preserve</b>	Off-site, branches overhang site.
115	Chinese pistache	9	28	No	\$ 1,400	<b>Preserve</b>	Off-site, branches overhang site.
116	Chinese pistache	7	22	No	\$ 900	<b>Preserve</b>	Off-site, branches overhang site.
117	Chinese pistache	10	31	No	\$ 1,700	<b>Preserve</b>	Off-site, branches overhang site.
118	Chinese pistache	9	28	No	\$ 1,400	<b>Preserve</b>	Off-site, branches overhang site.
119	Chinese pistache	11	35	No	\$ 2,000	<b>Preserve</b>	Off-site, branches overhang site.
120	Strawberry tree	14	44	No	\$ 4,650	Remove	Within construction footprint.
121	Purpleleaf plum	11	35	No	\$ 2,000	Remove	Within construction footprint.
122	Canary Island date palm	20	63	No	\$ 6,750	Remove	Within construction footprint.
123	Mexican fan palm	15	47	No	\$ 1,250	Remove	Within construction footprint.
124	Mexican fan palm	11	35	No	\$ 1,000	Remove	Within construction footprint.
125	Mexican fan palm	11	35	No	\$ 1,000	Remove	Within construction footprint.
126	Mexican fan palm	12	38	No	\$ 1,000	Remove	Within construction footprint.
127	Mexican fan palm	13	41	No	\$ 1,000	Remove	Within construction footprint.
128	Mexican fan palm	14	44	No	\$ 1,000	Remove	Within construction footprint.
129	Purpleleaf plum	5	16	No	\$ 550	Remove	Within construction footprint.
130	Purpleleaf plum	9	28	No	\$ 1,400	Remove	Within construction footprint.
131	Mexican fan palm	11	35	No	\$ 1,000	Remove	Within construction footprint.
132	Mexican fan palm	12	38	No	\$ 1,000	Remove	Within construction footprint.
133	Mexican fan palm	14	44	No	\$ 1,000	Remove	Within construction footprint.
134	Mexican fan palm	11	35	No	\$ 1,000	Remove	Within construction footprint.
135	Canary Island date palm	25	79	No	\$ 7,500	Remove	Within construction footprint.
136	Mexican fan palm	10	31	No	\$ 1,000	Remove	Within construction footprint.
137	Mexican fan palm	12	38	No	\$ 1,000	Remove	Within construction footprint.
138	Mexican fan palm	10	31	No	\$ 1,000	Remove	Within construction footprint.

# Tree Disposition & Estimated Values

451 El Camino Real  
 Santa Clara, CA  
 August 7, 2024



Tree No.	Species	Trunk Diameter (in.)	Circumfrance (in.)	Protected Tree?	Estimated Value	Disposition	Comments
139	Mexican fan palm	12	38	No	\$ 1,000	Remove	Within construction footprint.
140	Canary Island date palm	21	66	No	\$ 7,500	Remove	Within construction footprint.
141	Canary Island date palm	25	79	No	\$ 7,500	Remove	Within construction footprint.
142	Crape myrtle	3,2,2,2,2,2	47	No	\$ 450	Remove	Within construction footprint.
143	Crape myrtle	4,4,4,4,3,3	69	No	\$ 800	Remove	Within construction footprint.
144	Crape myrtle	3,2,2,2,2,2	44	No	\$ 450	Remove	Within construction footprint.
145	Crape myrtle	4,4,3,3,3,3,3,3,2,2	94	No	\$ 800	Remove	Within construction footprint.
146	Purpleleaf plum	10	31	No	\$ 2,000	Remove	Within construction footprint.
147	London plane	13	41	No	\$ 2,000	Remove	Within construction footprint.
148	London plane	13	41	No	\$ 2,000	Remove	Within construction footprint.
149	London plane	13	41	No	\$ 2,000	Remove	Within construction footprint.
150	Canary Island date palm	26	82	No	\$ 5,725	Remove	Within construction footprint.
151	London plane	10	31	No	\$ 900	Remove	Within construction footprint.
152	Strawberry tree	12	38	No	\$ 2,500	Remove	Within construction footprint.
153	Strawberry tree	13	41	No	\$ 2,900	Remove	Within construction footprint.
154	Strawberry tree	12	38	No	\$ 2,500	Remove	Within construction footprint.
155	Strawberry tree	14	44	No	\$ 3,350	Remove	Within construction footprint.
156	Maidenhair tree	6	19	No	\$ 700	Remove	Within construction footprint.
157	Strawberry tree	15	47	No	\$ 3,850	Remove	Within construction footprint.
158	Strawberry tree	13	41	No	\$ 2,900	Remove	Within construction footprint.
159	Strawberry tree	15	47	No	\$ 5,300	Remove	Within construction footprint.
160	Strawberry tree	14	44	No	\$ 4,650	Remove	Within construction footprint.
161	Canary Island date palm	29	91	No	\$ 7,500	Remove	Within construction footprint.
162	London plane	12	38	No	\$ 1,450	Remove	Within construction footprint.

# Tree Disposition & Estimated Values

451 El Camino Real  
Santa Clara, CA  
August 7, 2024



Tree No.	Species	Trunk Diameter (in.)	Circumfrance (in.)	Protected Tree?	Estimated Value	Disposition	Comments
163	London plane	14	44	No	\$ 1,900	Remove	Within construction footprint.
164	Windmill palm	8	25	No	\$ 450	Remove	Within construction footprint.
165	Windmill palm	9	28	No	\$ 450	Remove	Within construction footprint.
166	London plane	13	41	No	\$ 2,300	Remove	Within construction footprint.
167	London plane	12	38	No	\$ 1,950	Remove	Within construction footprint.
168	London plane	12	38	No	\$ 1,600	Remove	Within construction footprint.
169	London plane	12	38	No	\$ 1,600	Remove	Within construction footprint.
170	Purpleleaf plum	8	25	No	\$ 950	Remove	Within construction footprint.
171	Purpleleaf plum	8	25	No	\$ 950	Remove	Within construction footprint.
172	Purpleleaf plum	10	31	No	\$ 1,400	Remove	Within construction footprint.
173	Bronze loquat	6	19	No	\$ 600	Remove	Within construction footprint.
174	Purpleleaf plum	6	19	No	\$ 600	Remove	Within construction footprint.
175	Mexican fan palm	12	38	No	\$ 1,000	Remove	Within construction footprint.
176	Mexican fan palm	10	31	No	\$ 1,000	Remove	Within construction footprint.
177	Mexican fan palm	13	41	No	\$ 1,000	Remove	Within construction footprint.
178	Mexican fan palm	11	35	No	\$ 1,000	Remove	Within construction footprint.
179	Purpleleaf plum	8	25	No	\$ 1,150	Remove	Within construction footprint.
180	Chinese pistache	7	22	No	\$ 1,050	Remove	Within construction footprint.
181	Chinese pistache	6	19	No	\$ 850	Remove	Within construction footprint.
182	Chinese pistache	5	16	No	\$ 650	Remove	Within construction footprint.
183	Chinese pistache	6	19	No	\$ 850	Remove	Within construction footprint.
184	Chinese pistache	6	19	No	\$ 850	Remove	Within construction footprint.
185	Chinese pistache	8	25	No	\$ 1,350	Remove	Within construction footprint.
186	Chinese pistache	7	22	No	\$ 1,050	Remove	Within construction footprint.
187	Chinese pistache	6	19	No	\$ 850	Remove	Within construction footprint.
188	Chinese pistache	11	35	No	\$ 2,350	Remove	Within construction footprint.
189	Chinese pistache	8	25	No	\$ 1,350	Remove	Within construction footprint.

# Tree Disposition & Estimated Values

451 El Camino Real  
Santa Clara, CA  
August 7, 2024



Tree No.	Species	Trunk Diameter (in.)	Circumfrance (in.)	Protected Tree?	Estimated Value	Disposition	Comments
190	Purpleleaf plum	8	25	No	\$ 1,350	Remove	Within construction footprint.
191	Purpleleaf plum	7	22	No	\$ 750	Remove	Within construction footprint.
192	Purpleleaf plum	10	31	No	\$ 1,700	Remove	Within construction footprint.
193	Purpleleaf plum	7	22	No	\$ 900	Remove	Within construction footprint.
194	Dragon tree	13	41	No	\$ 150	Remove	Within construction footprint.
195	Dragon tree	12	38	No	\$ 1,200	Remove	Within construction footprint.
196	Dragon tree	11	35	No	\$ 1,050	Remove	Within construction footprint.
197	Dragon tree	9	28	No	\$ 750	Remove	Within construction footprint.
198	Strawberry tree	10	31	No	\$ 1,450	Remove	Within construction footprint.
199	Strawberry tree	5	16	No	\$ 500	Remove	Within construction footprint.
200	Strawberry tree	4	13	No	\$ 400	Remove	Within construction footprint.
201	Mexican fan palm	11	35	No	\$ 1,000	Remove	Within construction footprint.
202	Mexican fan palm	12	38	No	\$ 1,000	Remove	Within construction footprint.
203	Purpleleaf plum	11	35	No	\$ 2,000	Remove	Within construction footprint.
204	Mexican fan palm	12	38	No	\$ 1,000	Remove	Within construction footprint.
205	Purpleleaf plum	6	19	No	\$ 700	Remove	Within construction footprint.
206	Purpleleaf plum	5	16	No	\$ 550	Remove	Within construction footprint.
207	Purpleleaf plum	9	28	No	\$ 1,400	Remove	Within construction footprint.
208	Purpleleaf plum	6	19	No	\$ 700	Remove	Within construction footprint.
209	Purpleleaf plum	5	16	No	\$ 550	Remove	Within construction footprint.
210	Purpleleaf plum	6	19	No	\$ 700	Remove	Within construction footprint.
211	Purpleleaf plum	9	28	No	\$ 1,400	Remove	Within construction footprint.
212	Purpleleaf plum	9	28	No	\$ 1,400	Remove	Within construction footprint.
213	Bronze loquat	4	13	No	\$ 300	Remove	Within construction footprint.
214	Bronze loquat	6	19	No	\$ 700	Remove	Within construction footprint.
215	Bronze loquat	7	22	No	\$ 900	Remove	Within construction footprint.
216	Bronze loquat	9	28	No	\$ 1,900	Remove	Within construction footprint.

# Tree Disposition & Estimated Values

451 El Camino Real  
Santa Clara, CA  
August 7, 2024



Tree No.	Species	Trunk Diameter (in.)	Circumfrance (in.)	Protected Tree?	Estimated Value	Disposition	Comments
217	Bronze loquat	8	25	No	\$ 1,150	Remove	Within construction footprint.
218	Bronze loquat	9	28	No	\$ 1,400	Remove	Within construction footprint.
219	London plane	18	57	No	\$ 3,050	<b>Preserve</b>	Off-site, branches overhang site.
220	Canary Island date palm	22	69	No	\$ 7,500	<b>Preserve</b>	Edge of development.
221	Mexican fan palm	13	41	No	\$ 1,000	<b>Preserve</b>	Edge of development.
222	Chinese elm	11	35	No	\$ 2,350	<b>Preserve</b>	Off-site, branches overhang site.
223	Chinese elm	7	22	No	\$ 600	<b>Preserve</b>	Split ownership, edge of development; branches overhang site.
224	Chinese elm	7	22	No	\$ 900	<b>Preserve</b>	Split ownership, edge of development; branches overhang site.
225	Chinese elm	10	31	No	\$ 1,700	<b>Preserve</b>	Split ownership, edge of development; branches overhang site.
226	Chinese elm	11	35	No	\$ 2,000	<b>Preserve</b>	Split ownership, edge of development; branches overhang site.
227	Chinese elm	9	28	No	\$ 1,400	<b>Preserve</b>	Split ownership, edge of development; branches overhang site.
228	Chinese elm	11	35	No	\$ 2,000	<b>Preserve</b>	Split ownership, edge of development; branches overhang site.
229	Chinese elm	8	25	No	\$ 1,150	<b>Preserve</b>	Split ownership, edge of development; branches overhang site.
230	Chinese elm	8	25	No	\$ 1,150	<b>Preserve</b>	Off-site, branches overhang site.
231	Chinese elm	9	28	No	\$ 1,400	<b>Preserve</b>	Off-site, branches overhang site.
232	Purpleleaf plum	10	31	No	\$ 1,250	<b>Preserve</b>	Edge of development.
233	London plane	9	28	No	\$ 900	<b>Preserve</b>	Edge of development.
234	London plane	10	31	No	\$ 1,050	<b>Preserve</b>	Edge of development.
235	London plane	11	35	No	\$ 1,250	<b>Preserve</b>	Edge of development.
236	London plane	10	31	No	\$ 1,050	<b>Preserve</b>	Edge of development.
237	London plane	9	28	No	\$ 900	<b>Preserve</b>	Edge of development.

# Tree Disposition & Estimated Values

451 El Camino Real  
 Santa Clara, CA  
 August 7, 2024



Tree No.	Species	Trunk Diameter (in.)	Circumfrance (in.)	Protected Tree?	Estimated Value	Disposition	Comments
238	London plane	10	31	No	\$ 1,050	<b>Preserve</b>	Edge of development.
239	London plane	10	31	No	\$ 1,400	<b>Preserve</b>	Edge of development.
240	London plane	9	28	No	\$ 1,200	<b>Preserve</b>	Edge of development.
241	London plane	9	28	No	\$ 900	<b>Preserve</b>	Edge of development.
242	London plane	9	28	No	\$ 900	<b>Preserve</b>	Edge of development.
243	Canary Island date palm	25	79	No	\$ 7,500	<b>Preserve</b>	Edge of development.
244	Purpleleaf plum	7	22	No	\$ 900	Remove	Within construction footprint.
245	Mexican fan palm	11	35	No	\$ 1,000	Remove	Within construction footprint.
246	Mexican fan palm	10	31	No	\$ 1,000	Remove	Within construction footprint.
247	Mexican fan palm	12	38	No	\$ 1,000	Remove	Within construction footprint.
248	Mexican fan palm	9	28	No	\$ 1,000	Remove	Within construction footprint.
249	Purpleleaf plum	6	19	No	\$ 700	Remove	Within construction footprint.
250	Purpleleaf plum	9	28	No	\$ 900	Remove	Within construction footprint.
251	Mexican fan palm	12	38	No	\$ 1,000	<b>Preserve</b>	Edge of development.
252	Mexican fan palm	12	38	No	\$ 1,000	<b>Preserve</b>	Edge of development.
253	Mexican fan palm	12	38	No	\$ 1,000	<b>Preserve</b>	Edge of development.
254	Mexican fan palm	12	38	No	\$ 1,000	<b>Preserve</b>	Edge of development.
255	Mexican fan palm	14	44	No	\$ 1,000	<b>Preserve</b>	Edge of development.
256	Mexican fan palm	12	38	No	\$ 1,000	<b>Preserve</b>	Edge of development.
257	Mexican fan palm	12	38	No	\$ 1,000	<b>Preserve</b>	Edge of development.
<b>Total</b>					<b>\$ 348,425</b>		