

**Eastern Municipal Water District**

2270 Trumble Road  
P.O. Box 8300  
Perris, CA 92572-8300



**Notice of Exemption**

**To:** Riverside County Clerk  
2724 Gateway Drive  
Riverside, CA 92507

**Project Title:** Temecula Valley Regional Water Reclamation Facility Plant 1 Air Line and Aeration Basin Rehabilitation  
**Project Location:** 42565 Avenida Alvarado  
**City:** Temecula  
**County:** Riverside

**Description of Nature, Purpose, and Beneficiaries of Project:**

Eastern Municipal Water District’s (EMWD) Temecula Valley Regional Water Reclamation Facility (TVRWRF) has been experiencing leaking to the underground air supply line from the blower building, which provides air to the rest of the Plant 1 process area. This leakage has reduced Plant 1’s operational efficiency because more power is needed to supply aeration to the basins. In addition, the existing proprietary panel air diffusers located in the aeration basins are becoming obsolete.

The rehabilitation of Plant 1 would include the construction of new, above-grade airlines to replace the existing underground airlines and the replacement of the existing aeration basin panel diffuser with new tube diffusers. Additionally, structural and mechanical rehabilitation of the aeration basins will be completed to extend their useful life. Finally, miscellaneous improvements to enhance maintenance activities will also be completed, including improvements to ladder access into the aeration basins and the installation of a new utility water line in the primary clarifier area. Beneficiaries of the project are EMWD ratepayers.

**Public Agency Approving and Carrying Out Project:** Eastern Municipal Water District

**Exempt Status:**

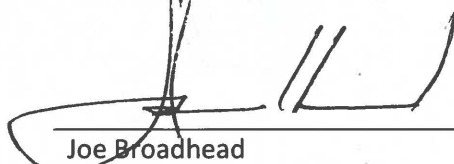
Categorical Exemption. 15301(a)

**Reasons why project is exempt:**

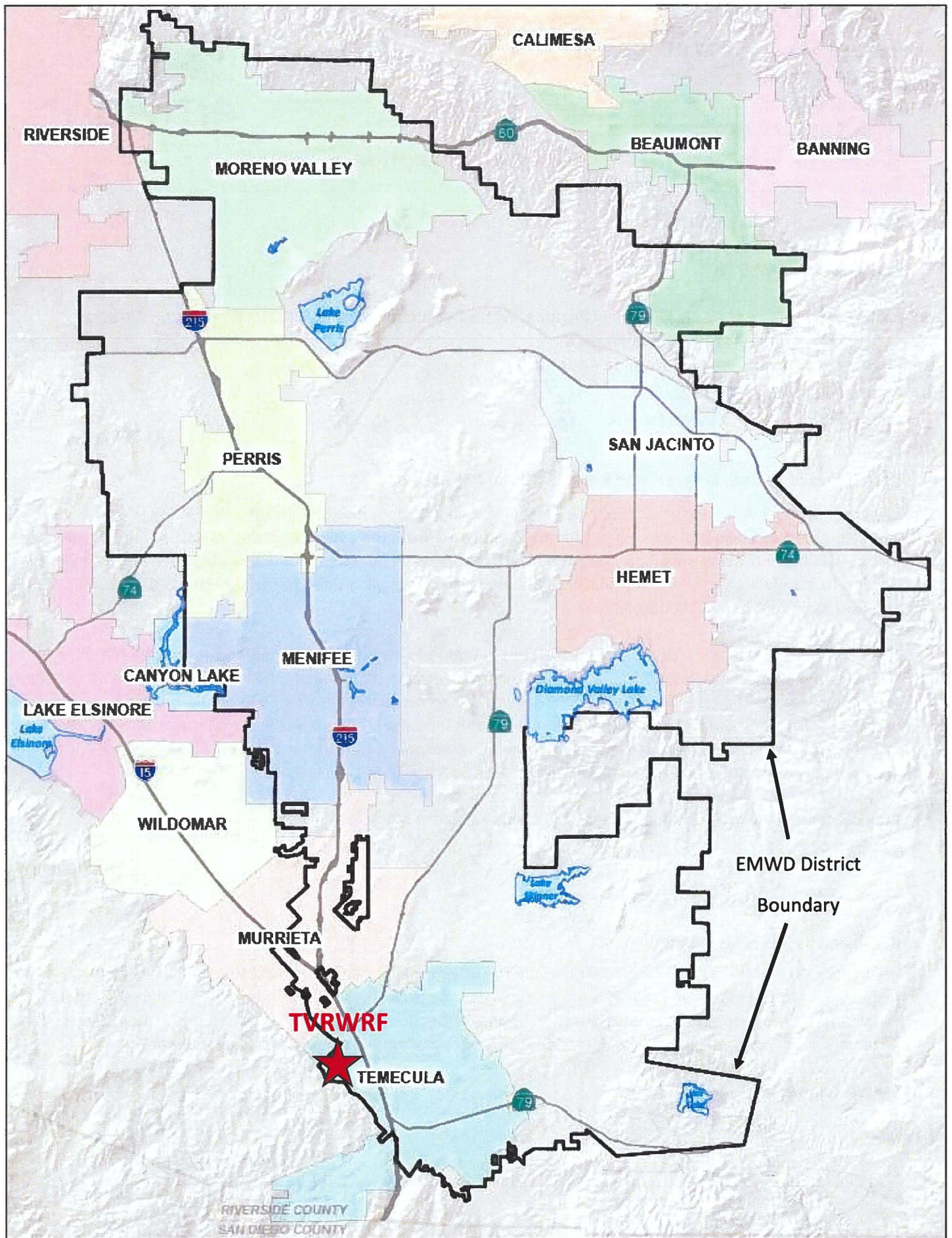
Implementation of the project would result in the repair and maintenance of an existing public facility involving negligible or no expansion of TVRWRF’s design capacity. The project will rehabilitate TVRWRF’s Plant 1 through repair and maintenance of the airlines, aeration basins, ladder access, and installation of a new water utility line, all of which will restore Plant 1 to its operational efficiency and extend useful life of its equipment.

**EMWD Contact:** Joe Broadhead

**Phone:** (951) 928-3777, ext 4545

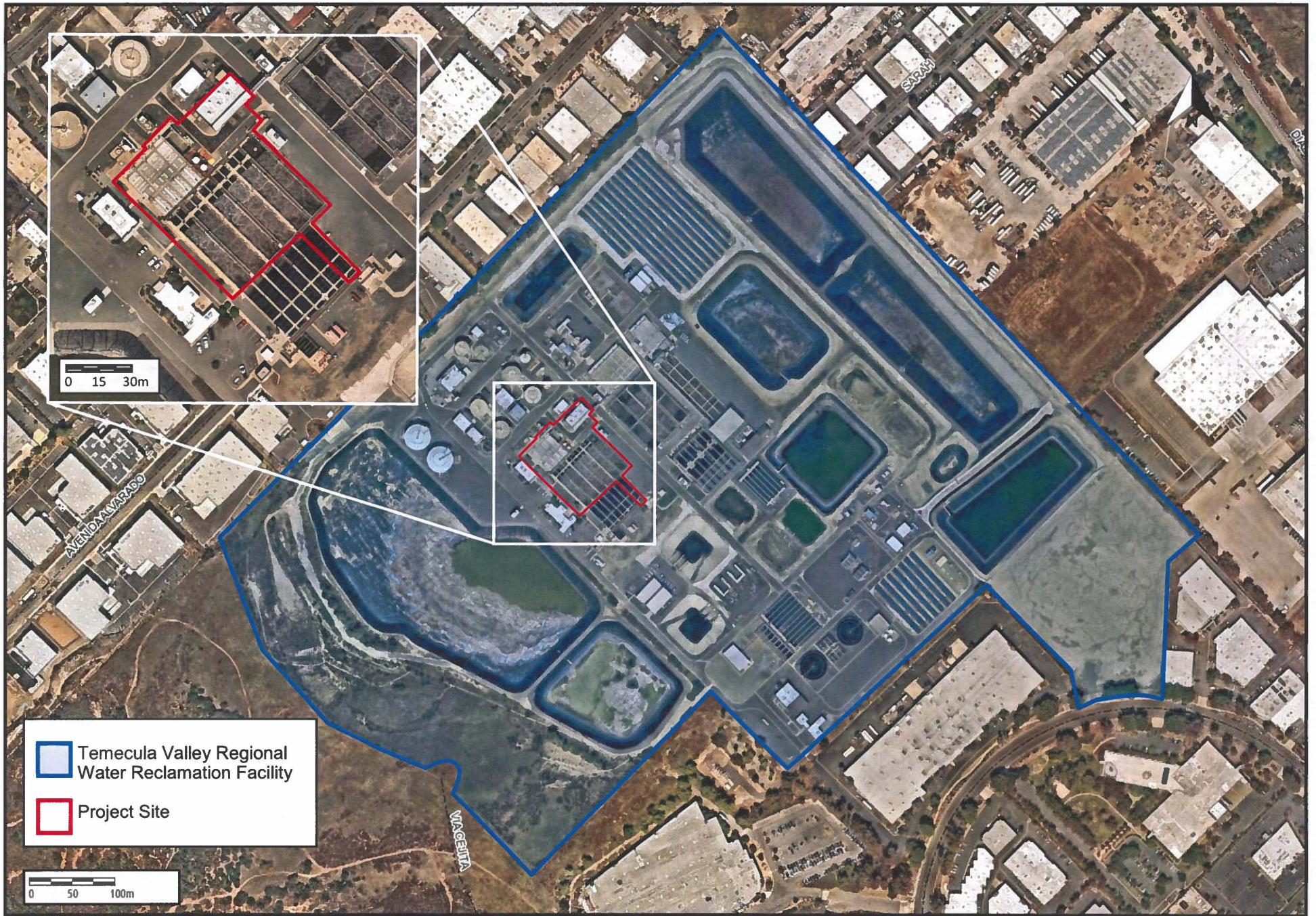
  
\_\_\_\_\_  
Joe Broadhead  
Principal Water Resources Specialist

5-14-25  
Date



TVRWRF Plant 1 Air Line and Aeration Basin Rehabilitation

EXHIBIT 1: REGIONAL LOCATION MAP



TVRWRWF Plant 1 Air Line and Aeration Basin Rehabilitation

EXHIBIT 2: SITE LOCATION MAP