

February 29, 2024

Andrew Taylor  
8561 "C" Avenue  
Hesperia, CA 92345

Subject: Cultural/Paleontological Resources Assessment for the Taylor Apartments Project, City of Hesperia, County of San Bernardino, California

Dear Mr. Taylor,

At the request of Andrew Taylor (CLIENT), Duke Cultural Resources Management, LLC (DUKE CRM) has prepared a cultural and paleontological resources assessment for the approximately 4.8-acres of land (Project) on Assessor Panel Numbers (APNs) 0410-242-03 and -04. The City of Hesperia (CITY) is the lead agency for the California Environmental Quality Act (CEQA). The purpose of this letter report is to document compliance with CEQA regarding cultural and paleontological resources, and to provide information to allow the CITY to determine whether the proposed Project would cause substantial impacts to archaeological, historical, or paleontological resources.

The Project is located within Section 28, Township 4 North, Range 4 West, as depicted on the *Hesperia, Calif.* USGS 7.5-minute quadrangle (Figure 2. Project Location). It is located within APNs 0410-242-03 and -04 north of the northeast corner of C Avenue and Lime Street and ¼ mile east of Santa Fe Avenue (Figure 3 Project Aerial). The Project is approximately 4.8 acres in size. The Project's immediate goal is to obtain permits for a proposed eight (8) two-story multi-tenant dwellings, three (3) one-story multi-tenant duplexes, and two (2) one-story accessory storage buildings. Maximum depth of ground disturbance is anticipated to be six (6) feet below surface.

## Research

### ***Paleontological Resources***

On December 18, 2023, DUKE CRM requested that the San Bernardino County Museum (SBCM) in Redlands, California perform a paleontological records search for known fossil localities within and in the vicinity of the Project. The SBCM responded on January 31, 2024, indicating that no fossil localities were documented within the Project or the surrounding one (1) mile radius. However, 100 SBCM paleontological localities are located within the older alluvium (*Qoa*) within 10 miles of the Project. The nearest locality, SBCM 1.114.235, is approximately 1.5 miles south-southwest from the Project and produced fossilized root casts. The closest localities producing vertebrate fossils are between 4.5 and 5 miles from the Project (Kottkamp 2024).

The geologic unit underlying the Project area, at the surface, was mapped by Dibblee and Minch (2008) as older alluvial deposits (*Qoa*) dating to the late Pleistocene epoch. These deposits consist of medium to coarse, gray to brown sediments originating from the San Bernardino and San Gabriel Mountains to the south (Kottkamp 2024). Based on published data giving an estimation, the Project area is assessed as having moderate sensitivity for paleontological resources at depths at and exceeding three (3) feet.

### ***Cultural Resources***

On January 16, 2024, DUKE CRM conducted a records search at the South Central Coastal Information Center (SCCIC). The SCCIC is part of the California Historical Resources Information System (CHRIS) and is located at California State University, Fullerton. The records search included a review of all recorded cultural resources and reports within a ½-mile radius of the Project.

One (1) prehistoric and no historic era cultural resources have been recorded within a ½ mile radius of the Project; they do not include any portion of the Project area. Resource P-36-001645 consists of a light scatter of cores and flakes with a possible hearth located 2,000 ft east of the Project. Additionally, SCCIC records indicate that a total of 14 cultural resource reports cover areas within the ½ mile of the Project (Table 1). None of these investigations cover the Project area or record resources in proximity. Reports include archaeological and paleontological surveys, assessments, and inventories for various projects within the area.

**Table 1: Cultural Resource Studies within ½ mile of the Project**

Report No.	Year	Report Title	Authors	Sites within the Project area
SB-00507	1977	An Archaeological Assessment Of Three Job Sites Within Hesperia County Water District, San Bernardino County, California	Leonard III, N. Nelson	None
SB-02253	1991	An Archaeological Assessment Of Three Job Sites Within Hesperia County Water District, San Bernardino County, California	Yohe II, Robert M.	None
SB-02420	1991	A Cultural Resources Survey of Parcel nos. APN 410-212-2, APN 410-212-3, APN 410-212-4, and APN 410-212-39, a 9-Acre Tract in the Area of C and Muscatel, City of Hesperia, CA	Parker, Cole	None
SB-03973	2003	An Archaeological and Paleontological Resources Survey of Approximately 15 Acres for the Hesperia 225 Project Located at Sultana St & C Ave in the City of Hesperia, San Bernardino County, CA	Budinger, Fred	None
SB-03978	2003	Results of a Phase I Cultural Resource Investigation of the TMS Consortium Property, APN: 410-211-02, 08 & 09 (15 acres), San Bernardino County, CA	Mckena, Jeanette A.	None
SB-03986	2003	A Phase I Archaeological & Paleontological Resources Survey of 2.85 Acres of Land Associated With the Crossings at Hesperia Project Near C Ave & Sultana St, City of Hesperia, San Bernardino County, CA	Budinger, Fred	None
SB-03987	2003	A Phase I Archaeological Survey of 2.2 Acres at Joshua St & C Ave, City of Hesperia, San Bernardino County, CA	Budinger, Fred	None
SB-04784	2006	Historical/ Archaeological Resources Survey Report: Assessor's Parcel Numbers 0410-221-27, -29, -32, and -39, City of Hesperia, San Bernardino County, California	Shackford, Thomas and Porter, Robert Allen	None
SB-04795	2006	Cultural Resource Records Search and Site Visit Results for Cingular Telecommunications Facility Candidate ES-0216-01 (Lime St. Park), 16292 Lime Street, Hesperia, San Bernadino County, California	Bonner, Wayne H.	None
SB-04974	2005	Historical/Archaeological Resources Survey Report: Tentative Map 17236 in the City of Hesperia, San Bernardino County, California	Tibbett, Casey	None
SB-05208	2006	Cultural Resources Inventory of 21 Acres: Tentative Tract 16499, Assessor's Parcel Number 412-191-03 Hesperia, San Bernardino County, California	Sander, Jay	None
SB-05463	2005	Results of a Phase I Cultural Resources Investigation of Assessor Parcel No. 0410-241-02, Approximately 4 Acres in the Hesperia Are of San Bernardino County, California.	McKenna, Jeanette A.	None
SB-06540	2009	Cultural Resources Record Search and Archaeological Survey Results for the Proposed Royal Street Communications, California LLC, Site LA3320A (Lime Street Park) Located at 16292 Lime Street, Hesperia, San Bernardino County, California 92345-4016	Wlodarski, Robert J.	None
SB-008044	2016	Archaeological Survey Report VzT Sky Hill/Ensite #28177 (296265)	Perez, Don C.	None

A request for a Sacred Lands File (SLF) search was submitted to the Native American Heritage Commission (NAHC) on December 15, 2023 to ascertain the presence of known sacred sites, Native American cultural resources, and/or human remains within the boundaries of the proposed Project. The NAHC responded on January 5, 2024, and indicated that the results of the SLF search were positive. The NAHC provided a list of

29 individuals representing 16 tribal groups. The NAHC recommended the Chemehuevi Indian Tribe and San Manuel Band of Mission Indians tribes be contacted. DUKE CRM sent both tribes an email requesting any information regarding the sensitivity of the Project. The San Manuel Band of Mission Indians sent a response on February 7, 2024 stating the follow: “Thank you for contacting the San Manuel Band of Mission Indians concerning the proposed project area. San Manuel appreciates the opportunity to review the project documentation received by the Cultural Resources Management Department on February 6, 2024. Based on our current knowledge, the proposed project site is within a culturally sensitive landscape for the Tribe. Upon reviewing the proposed location, the Tribe's concerns regarding its cultural sensitivity have diminished. However, the proposed project is located within Serrano Ancestral Territory and is therefore of interest to the Tribe. As such, San Manuel will still wish to engage in government-to-government consultation pursuant to AB 52, should this project be subject to CEQA review”. On February 9, 2024, the Chemehuevi Indian Tribe stated that the tribe “has no cultural concerns for this project”.

### **Online Research**

DUKE CRM conducted online research which included the California Built Environment Resources Directory (BERD) that includes the National Register of Historic Place, the California Register of Historical Resources (CRHR), California Historical Landmarks, and California Points of Historical Interest. The BERD did not reference any cultural resources within the Project area. DUKE CRM also consulted the Cultural Resources Technical Report appendix to the 2010 Environmental Impact Report for the City of Hesperia General Plan. Review of this report did not identify any cultural resources within the Project. Research indicates a 2019 General Plan Update has been produced but was not available online. Based on a map depicting ethnographically known Native American villages according to accounts of Franciscan missionary explorer Francisco Garcés (Earle 2005), the nearest village to the Project was *Atongaibit*, thought to be located near the Mojave River approximately four (4) miles northeast of the Project.

Additionally, a review of historical aerial photographs and historical topographic maps was conducted using images on file with the University of California, Santa Barbara's online *FrameFinder* program, the USGS Historical Topographic Map Explorer, and *historicaerials.com*. The 1902 *Hesperia, Calif.* 1:62,500 historical topographic map displays the Atchinson, Topeka and Santa Fe railroad tracks (labeled “Southern California RR”) that lies approximately three (3) miles west at its present north-south alignment. The topographic map displays developing roads around present-day main street centered on the railroad. The Project lies within this historically developed area and the current alignment of the railroad runs parallel to present day Santa Fe Avenue which lies approximately ¼ mile west the Project. The 1942 *Hesperia, Calif.* 1:62,500 historic topographic map displays an increasingly developed town largely to the north of the Project area along main street. The 1952 aerial from *historicaerials.com* displays the Project area as an undeveloped plot of land adjacent to the road. By 1959, the Project area appears to have minor development with at least one (1) structure in the center of the plot (See Attachment B, Figure 1). This appears to be the location of a shed that currently resides in the same location. By 1968, a residence is illustrated just to the east of the shed structure. This appears to be the same residence that currently lies in the Project area. It appears that substantial changes, just as the expansion of the initial building, have been made to the residence in the first approximately 20 years since its construction.

### **Field Survey**

DUKE CRM archaeologist Morgan Beigle, Master of Arts, Registered Professional Archaeologist, conducted an intensive pedestrian survey of the Project area on January 19, 2024 (Attachment B: Project Area Photos). Mrs. Beigle is cross trained in the identification of paleontological resources. The survey focused on the open areas within the two residential lots, however the entirety of the 4.8-acres was accessible and surveyed. The Project (Figure 3: Project Aerial) was intensively surveyed using parallel transects spaced no more than 15 meters apart.

Ground visibility was good (between 70 to 85 percent) throughout the majority of the Project, with some minor visibility limitations due to sparse vegetation and a scattered tree line separating the fenced off residences. Vegetation within the Project consisted primarily of high grasses, with sparse creosote and trees throughout.

The Project area is developed with fenced off housing areas, dirt driveways, and utilities within the western half of the boundary. Disturbances include those associated with the residences such as tire tracks from vehicle traffic and a gardening area.

### Conclusions

DUKE CRM assessed the proposed Project for potentially significant impacts to cultural and paleontological resources under CEQA. Research suggests that the Project is underlain by Pleistocene-age older alluvial deposits (*Qoa*), which can be considered to have a moderate sensitivity for paleontological resources, throughout the unit. Based on published data, the Project area is assessed as having moderate sensitivity for paleontological resources at depths at and exceeding three (3) feet. Therefore, monitoring efforts related to paleontology are recommended for the Project on a part-time basis for excavations at or greater than three (3) feet. If any paleontological resources are discovered during any excavations for the Project, work should stop until the project paleontologist is able to identify the best course of action for the protection or mitigation of the paleontological resources.

**Paleontological Monitoring** – The moderate sensitivity of *Qoa* deposits for fossil occurrences necessitates that a paleontological monitor shall be present from the outset to observe ground disturbing activities within the Project. The monitor shall work under the direct supervision of a qualified paleontologist (B.S. /B.A. in geology, or related discipline with an emphasis in paleontology and demonstrated experience and competence in paleontological research, fieldwork, reporting, and curation).

1. The qualified paleontologist shall be on-site at the pre-construction meeting to discuss monitoring protocols.
2. Paleontological monitoring shall start at part-time. If no paleontological resources are discovered after half of the ground disturbance has occurred, monitoring can be reduced to spot-checking or stopped altogether at the discretion of the qualified paleontologist.
3. The monitor shall be empowered to temporarily halt or redirect grading efforts if paleontological resources are discovered.
4. In the event of a paleontological discovery the monitor shall flag the area and notify the construction crew immediately. No further disturbance in the flagged area shall occur until the qualified paleontologist has cleared the area.
5. In consultation with the qualified paleontologist the monitor shall quickly assess the nature and significance of the find. If the specimen is not significant it shall be quickly removed, and the area cleared.
6. If the discovery is significant the qualified paleontologist shall notify the developer and County immediately.
7. In consultation with the applicant, the qualified paleontologist shall develop a plan of mitigation which will likely include salvage excavation and removal of the find, removal of sediment from around the specimen (in the laboratory), research to identify and categorize the find, curation of the find in a local qualified repository, and preparation of a report summarizing the find.

No cultural resources have been previously recorded within the Project area. The cultural resources records search identified one (1) prehistoric era cultural resource recorded within a ½ mile radius of the Project that would not be impacted by the current Project. Furthermore, the pedestrian survey identified no cultural resources within the Project area. Pedestrian survey identified disturbances associated with the current residential homes on the property. Based on the aerial photographs, the structures associated with the residence were likely erected by 1968. The properties showed significant changes, such as the expansion of the original building, since its original construction, therefore these structures are assessed as having little to no data potential for meeting CRHR eligibility criteria. The majority of the Project area appears heavily disturbed. Additionally, the closest ethnographically known prehistoric village, *Atongaibit*, is located approximately four (4)

miles away from the Project. Based on these factors, the Project area is assessed as having a low sensitivity for prehistoric or intact historic cultural resources, and no further archaeological investigation is recommended.

If previously unidentified cultural or paleontological materials are unearthed during construction, work shall be halted in that area until the qualified archaeologist can assess the significance of the find. If human remains are encountered, State Health and Safety Code Section 7050.5 states that no further disturbance shall occur until the County Coroner has determined the origin and disposition pursuant to Public Resources Code Section 5097.98. The County Coroner must be notified of the find immediately. If the remains are determined to be prehistoric, the Coroner will notify the NAHC, which will determine and notify a Most Likely Descendant (MLD). With the permission of the landowner or his/her authorized representative, the MLD may inspect the site of the discovery. The MLD shall the inspection within 48 hours of notification by the NAHC. The MLD may recommend scientific removal and nondestructive analysis of human remains and items associated with Native American burials.

DUKE CRM appreciates the opportunity to provide cultural and paleontological services in support of this project. If you have any questions or comments, please feel free to contact me at (949) 356-6660 or [morganbeigle@dukecrm.com](mailto:morganbeigle@dukecrm.com).

Sincerely,

**DUKE CULTURAL RESOURCES MANAGEMENT, LLC**



Morgan Beigle, M.A., RPA  
Co-Principal Investigator/Archaeologist

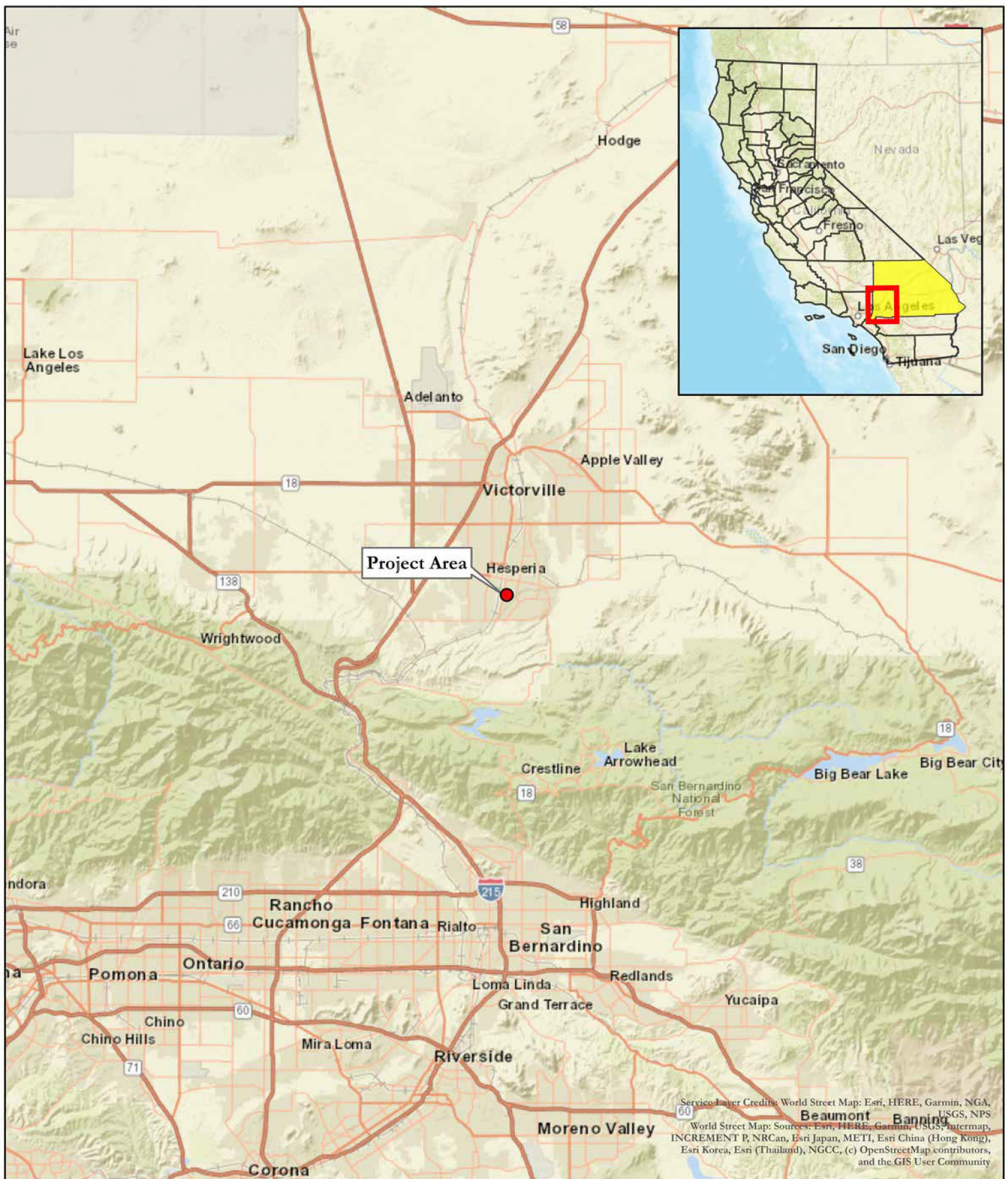
Attachments

- A: Project Maps
- B: Project Area Photographs

**ATTACHMENT A**

**PROJECT MAPS**

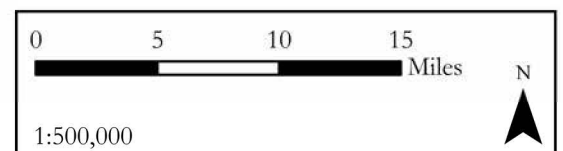




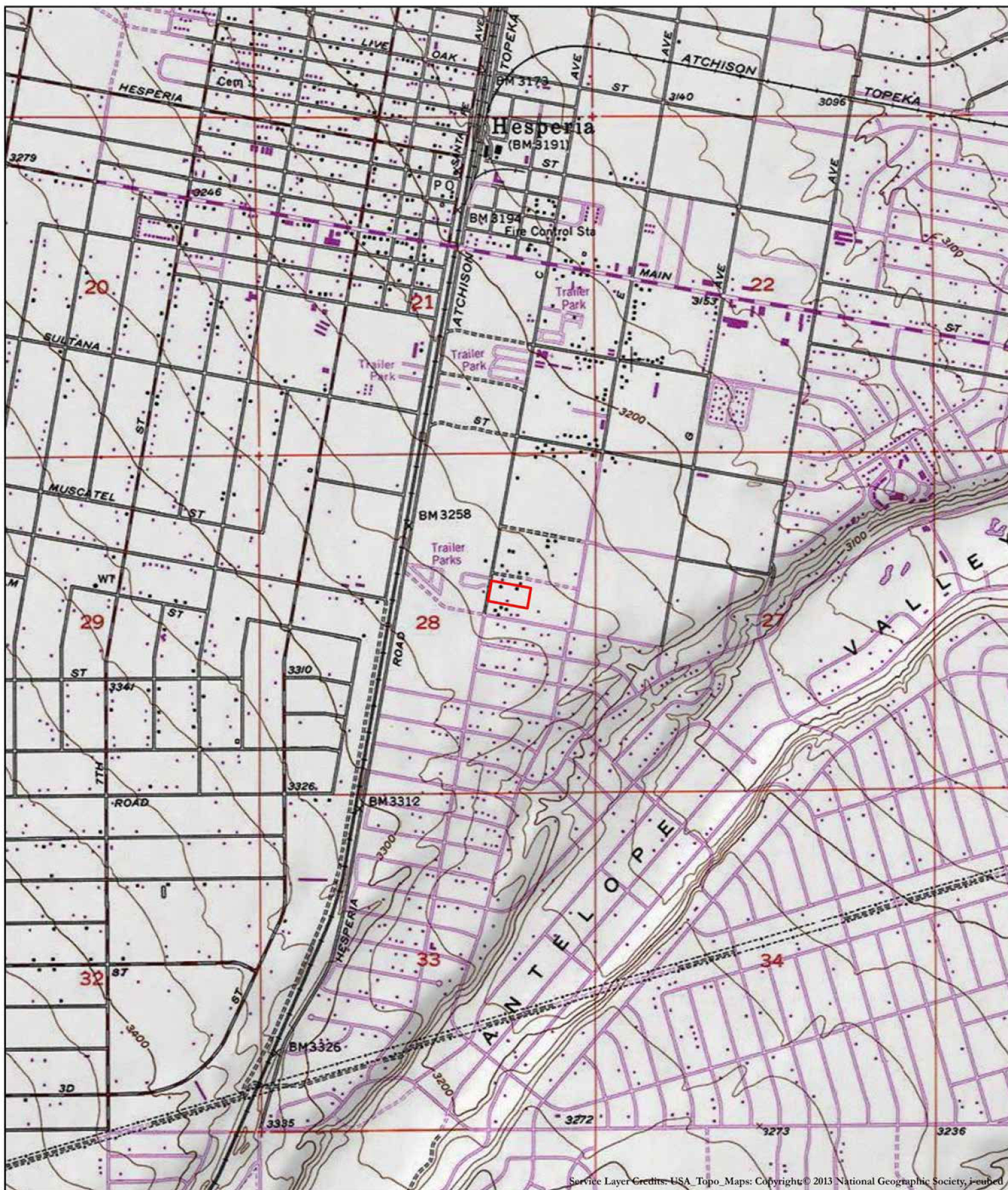
**Figure 1. Project Vicinity**  
 Taylor Apartments. Project, City of Hesperia (C-0529)



● Project Area







**Figure 2. Project Location**

Taylor Apartments. Project, City of Hesperia (C-0529)

*Hesperia, Calif USGS 7.5-minute quadrangle*

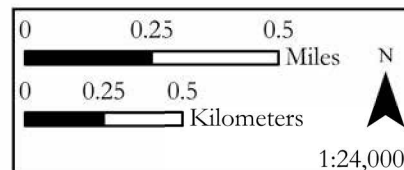
T4N, R4W, Section 28

Date of Map: 1980

Project Area



**DUKE  
CRM**





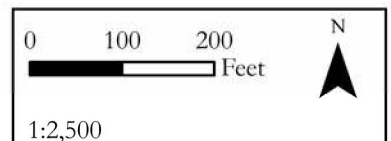


**Figure 3. Project Aerial**

Taylor Apartments. Project, City of Hesperia (C-0529)



Project Area  

**ATTACHMENT B**

**PROJECT AREA PHOTOGRAPHS**





Project overview from northwest corner and original shed constructed in 1959. View to east.



Project overview from northwest corner to resident driveway. View to southeast.





Project overview from northwest corner to residential property. View to west.



Project overview from northeast corner. View to south.





Project overview from southwest corner. View to northeast.



Project overview from southeast corner. View to north.





Close view of vegetation. View to south.



Close view of soils. View to ground.





Overview of gardening area in the project area. View to southwest.



Overview of tire marks in the southeast corner. View to northwest.





Overview of property treeline. View to west.



Overview of dividing fencing between residences. View to west.