



**SANTA CLARA COUNTY CLERK
CEQA FILING COVER SHEET**

Santa Clara County - Clerk-Recorder Office
State of California

File Number: ENV25551

ENVIRONMENTAL FILING

No. of Pages: 3

Total Fees: \$50.00

File Date: 04/01/2025

Expires: 05/06/2025

REGINA ALCOMENDRAS, Clerk-Recorder

By: Nina Khamphilath, Deputy Clerk-Recorder

THIS SPACE FOR CLERK'S USE ONLY

Complete and attach this form to each CEQA Notice filed with the County Clerk

TYPE OR PRINT CLEARLY

Check Document being Filed:

- ☐ Environmental Impact Report (EIR)
- ☐ Filing Fee (new project)
 - ☐ Previously Paid F&W (must attach F&W receipt and project titles must match)
 - ☐ No Effect Determination (F&W letter must be attached)
- ☐ Mitigated Negative Declaration (MND) or Negative Declaration (ND)
- ☐ Filing Fee (new project)
 - ☐ Previously Paid F&W (must attach F&W receipt and project titles must match)
 - ☐ No Effect Determination (F&W letter must be attached)
- ☒ Notice of Exemption (NOE)
- ☐ Other (Please fill in type):

1. LEAD AGENCY: Franklin-McKinley School District
2. LEAD AGENCY EMAIL: jason.vann@fmsd.org
3. PROJECT TITLE: Franklin-McKinley School District School Closures, Consolidation and Attendance Boundary Adjustments
4. APPLICANT NAME: Jason Vann, Assistant Superintendent of Business Services PHONE: 408-283-6064
5. APPLICANT EMAIL: jason.vann@fmsd.org
6. APPLICANT ADDRESS: 645 Wool Creek Drive, San Jose, CA 95112-2617
7. PROJECT APPLICANT IS A: ☐ Local Public Agency ☒ School District ☐ Other Special District ☐ State Agency ☐ Private Entity
8. NOTICE TO BE POSTED FOR 35 DAYS.

Filing fees are due at the time a Notice of Determination/Exemption is filed with our office. For more information on filing fees and No Effect Determinations, please refer to California Code of Regulations, Title 14, section 753.5.

Notice of Exemption

To: ☒ Office of Planning and Research
P.O. Box 3044, 1400 Tenth Street, Room 212
Sacramento, CA 95812-3044

From: (Public Agency)
Franklin-McKinley School District
645 Wool Creek Drive
San Jose, CA 95112-2617

☒ County Clerk-Recorder
County of Santa Clara
110 West Tasman Drive, 1st Floor
San Jose, CA 95134

Project Title: Franklin-McKinley School District School Closures, Consolidation and Attendance Boundary Adjustments

Project Applicant: Franklin-McKinley School District

Project Location – Specific: Several school facilities throughout San Jose

Project Location – City: San Jose

Project Location – County: Santa Clara

Description of Nature, Purpose and Beneficiaries of the Project:

The Franklin-McKinley School District in San Jose approved the closure of Los Arboles, McKinley, and Ramblewood Elementary Schools (Resolution No. 2025-07, February 2025) in response to a prolonged enrollment decline of approximately 26 percent (2,817 students) between the 1997-98 and 2023-24 academic years.

The closures will consolidate operations into six receiving schools: Bridges Academy, G.W. Hellyer Elementary, Lairon College Preparatory Academy, George Shirakawa Sr. School, Sylvandale Elementary, and Santee Elementary. The consolidation plan includes boundary adjustments for all receiving schools to balance enrollment and ensure equitable student distribution.

The District also approved grade reconfigurations at Lairon College Preparatory Academy and George Shirakawa Sr. School. Lairon College Preparatory Academy, currently serving grades 4-8, will be reconfigured to serve K-6, integrating Los Arboles Elementary's K-3 programs. George Shirakawa Sr. School, currently serving PK-8, will also transition to a K-6 model. Additionally, the project includes the potential future installation of a single restroom facility at G.W. Hellyer Elementary and one at Santee Elementary School.

Name of Public Agency Approving Project: Franklin-McKinley School District

Name of Person or Agency Carrying Out Project: Franklin-McKinley School District

Exempt Status:

- ☒ Statutory Exemption. Closing of Any Public School (Article 18, Section 15282[i])
- ☒ Categorical Exemption. Existing Facilities (Article 19, Section 15301)
- ☒ Categorical Exemption. New Construction (Article 19, Section 15303)
- ☒ Categorical Exemption. Accessory Structures (Article 19, Section 15311)
- ☒ Categorical Exemption. Minor Additions to Schools (Article 19, Section 15314)
- ☒ Categorical Exemption. Educational or Training Programs Involving No Physical Changes (Article 19, Section 15322)

Reasons why project is exempt:

See attachment: Franklin-McKinley School District School Closures, Consolidation, and Attendance Boundary Adjustments CEQA Exemption Findings.

Lead Agency

Contact Person: Jason Vann,
Assistant Superintendent of Business Services

Area Code/Telephone/Extension: 408-283-6064

If filed by applicant:

1. Attach certified document of exemption finding.

2. Has a Notice of Exemption been filed by the public agency approving the project? ☐ Yes ☐ No

Signature: Ten Wissler Adam Date: 3/28/25 Title: consultant to the School District

☐ Signed by Lead Agency

Date received for filing at OPR: _____

☐ Signed by Applicant

Revised 2011



Regina Alcomendras
Santa Clara County
Clerk-Recorder
(408) 299-5688
<https://www.clerkrecorder.org>

Receipt: 25-49987

Product	Name	Extended
CEQA	ENVIRONMENTAL FILING	\$50.00
	# Pages	3
	Document #	ENV25551
	Document Info:	FRANKLIN-MCKINLEY SCHOOL DISTRICT
	Filing Type	E
Total		\$50.00
Tender (Check)		\$50.00
Paid By	EMC PLANNING GROUP INC.	
Check #	3339	
Paid By	EMC PLANNING GROUP INC.	

PLEASE KEEP FOR REFERENCE



State of California - Department of Fish and Wildlife
2025 ENVIRONMENTAL DOCUMENT FILING FEE
CASH RECEIPT
DFW 753.5a (REV. 01/01/25) Previously DFG 753.5a

RECEIPT NUMBER:
ENV25551
STATE CLEARINGHOUSE NUMBER (if applicable)

SEE INSTRUCTIONS ON REVERSE. TYPE OR PRINT CLEARLY.

LEAD AGENCY FRANKLIN-MCKINLEY SCHOOL DISTRICT	LEAD AGENCY EMAIL jason.vann@fmsd.org	DATE 04/01/2025
COUNTY/STATE AGENCY OF FILING SANTA CLARA		DOCUMENT NUMBER
PROJECT TITLE FRANKLIN-MCKINLEY SCHOOL DISTRICT SCHOOL CLOSURES, CONSOLIDATION AND ATTENDANCE		

PROJECT APPLICANT NAME JASON VANN, ASSISTANT SUPERINTENDENT OF	PROJECT APPLICANT EMAIL	PHONE NUMBER (408) 283-6064
PROJECT APPLICANT ADDRESS 645 WOOL CREEK DRIVE	CITY SAN JOSE	STATE CA
		ZIP CODE 95112

PROJECT APPLICANT (Check appropriate box)

☐ Local Public Agency ☒ School District ☐ Other Special District ☐ State Agency ☐ Private Entity

CHECK APPLICABLE FEES:

<input type="checkbox"/> Environmental Impact Report (EIR)	\$4,123.50	\$	
<input type="checkbox"/> Mitigated/Negative Declaration (MND)(ND)	\$2,968.75	\$	
<input type="checkbox"/> Certified Regulatory Program (CRP) document - payment due directly to CDFW	\$1,401.75	\$	

☒ Exempt from fee
☒ Notice of Exemption (attach)
☐ CDFW No Effect Determination (attach)
☐ Fee previously paid (attach previously issued cash receipt copy)

<input type="checkbox"/> Water Right Application or Petition Fee (State Water Resources Control Board only)	\$850.00	\$	
<input checked="" type="checkbox"/> County documentary handling fee		\$	\$50.00
<input type="checkbox"/> Other		\$	

PAYMENT METHOD:

☐ Cash ☐ Credit ☒ Check ☐ Other **TOTAL RECEIVED** \$ **\$50.00**

SIGNATURE X 	AGENCY OF FILING PRINTED NAME AND TITLE Nina Khamphilath, Deputy County Clerk-Recorder
---	---

CEQA Exemption Findings

School Closures, Consolidation, and Attendance Boundary Adjustments

Franklin-McKinley School District

March 21, 2025

**Prepared by
EMC Planning Group**

CEQA EXEMPTION FINDINGS

**SCHOOL CLOSURES, CONSOLIDATION, AND
ATTENDANCE BOUNDARY ADJUSTMENTS
FRANKLIN-MCKINLEY SCHOOL DISTRICT**

PREPARED FOR

Franklin-McKinley School District

Juan Cruz, Superintendent

645 Wool Creek Drive

San Jose, CA 95112

Tel 408.283.6022

juan.cruz@fmsd.org

PREPARED BY

EMC Planning Group Inc.

601 Abrego Street

Monterey, CA 93940

Tel 831.649.1799

Fax 831.649.8399

www.emcplanning.com

March 21, 2025



Table of Contents

Franklin-McKinley School District School Closures, Consolidation, and Attendance Boundary Adjustments Description and Evidence for Statutory and Categorical Exemptions	1
Project Description	1
Environmental Setting at Receiving Elementary Schools	4
Statutory Exemption	5
Categorical Exemptions.....	6
Environmental Analysis.....	11
Exceptions to Categorical Exemptions	15
Evidence And Findings	17
Sources	18

Appendices

Appendix A	Franklin-McKinley School District Resolution No. 2025-07 Approving School Consolidation
Appendix B	Existing and Proposed Franklin-McKinley School District School Attendance Boundaries
Appendix C	Proposed Restroom Facility Preliminary Designs
Appendix D	Hexagon Transportation Consultants VMT Study for Franklin-McKinley School District School Consolidation Plan

Tables

Table 1	Decline in District-Wide School Enrollment between 1997-98 and 2023-242
Table 2	Comparison of Peak Enrollment, Projected Enrollment and Capacity of Receiving Schools 4

Franklin-McKinley School District School Closures, Consolidation, and Attendance Boundary Adjustments Description and Evidence for Statutory and Categorical Exemptions

Project Description

School Closures and Consolidation

The Franklin-McKinley School District, located in San Jose, has approved the closure of Los Arboles Literacy and Technology Academy (455 Los Arboles Street), McKinley Elementary School (651 Macredes Avenue), and Ramblewood Elementary School (1351 Lightland Road), as well as grade reconfigurations at Lairon College Preparatory Academy and George Shirakawa Sr. School (Resolution No. 2025-07, [Appendix A](#)).

The closure of the three elementary schools and grade reconfigurations will be managed through the consolidation of operations at the following six schools:

- Bridges Academy (1702 McLaughlin Avenue);
- G.W. Hellyer Elementary School (725 Hellyer Avenue);
- Lairon College Preparatory Academy (3975 Mira Loma Way);
- Santee Elementary School (1313 Audubon Drive);
- George Shirakawa Sr. School (665 Wool Creek Drive); and
- Sylvandale Middle School (653 Sylvandale Avenue).

Students from Los Arboles Elementary will transfer to Lairon College Preparatory Academy, and students from Ramblewood Elementary will transfer to G.W. Hellyer Elementary. Seventh and eighth grade students from George Shirakawa Sr. School will be divided between Bridges Academy and Sylvandale Middle School, while all seventh and eighth grade students from Lairon will transfer to Sylvandale Middle School. Students from McKinley Elementary will transfer to Santee Elementary and George Shirakawa Sr. School.

The decision to consolidate school operations was prompted by a prolonged decline in enrollment, with total district enrollment decreasing by approximately 26 percent (2,817 students) between the 1997-98 and 2023-24 academic years. Between the school years 1997-98 and 2023-24, district-wide enrollment declined at each school as shown in [Table 1, Decline in District-Wide School Enrollment between 1997-98 and 2023-24](#). Given these trends, the District determined that consolidation and grade reconfigurations are necessary to reduce annual operational costs and maintain operational efficiency.

Table 1 Decline in District-Wide School Enrollment between 1997-98 and 2023-24

School	Enrollment 1997-98	Enrollment 2023-24	Percent Change
Captain Jason M. Dahl Elementary	735	419	43 percent decline
Franklin Elementary	752	528	29.7 percent decline
Jeanne R. Meadows Elementary	826	432	47.4 percent decline
Los Arboles Literacy and Technology Academy	777	184	76.3 percent decline
Ramblewood Elementary	333 ¹	255	23.4 percent decline
Stonegate Elementary	901	509	43.5 percent decline
Windmill Springs Elementary	751	560	25.4 percent decline
McKinley Elementary	701	233	66.7 percent decline
Bridges Academy	1,016	273	73.1 percent decline
G.W. Hellyer Elementary	677	374	44.7 percent decline
Lairon College Preparatory Academy	779	305	60.8 percent decline
Kennedy Elementary	883	300	66 percent decline
Santee Elementary	774	330	57.3 percent decline
George Shirakawa Sr. School	642 ²	519	19.1 percent decline
Sylvandale Middle	1,137	328	71.4 percent decline
College Connection Academy	118 ³	202	71.2 percent increase

SOURCE: Franklin-McKinley School District 2025

NOTES: 1 Operations at Ramblewood Elementary School commenced on August 15, 2005.

2 Operations at George Shirakawa Sr. School commenced on July 1, 1999.

3 Operations at College Connection Academy commenced on July 1, 2013.

School Attendance Boundary Adjustments

To align school attendance boundaries with enrollment needs and ensure balanced student distribution, the following boundary adjustments are proposed. [Appendix B](#) presents both existing and proposed attendance boundary maps.

Los Arboles Literacy and Technology Academy Consolidation and Boundary Adjustments

Los Arboles students will be reassigned to Lairon College Preparatory Academy as their primary school. No new transportation routes will be established, as both schools share the same attendance boundaries.

McKinley Elementary School Consolidation and Boundary Adjustments

McKinley students will be reassigned to Santee Elementary School and George Shirakawa Sr. School as their primary schools. The District will provide pick-up and drop-off transportation from the McKinley Elementary School campus to students attending Santee Elementary School.

Ramblewood Elementary School Consolidation and Boundary Adjustments

Ramblewood Elementary School students will be reassigned to G.W. Hellyer Elementary School as their primary school. The District will provide pick-up and drop-off transportation from the Ramblewood Elementary School campus for students attending G.W. Hellyer Elementary School.

Lairon College Preparatory Academy

Students entering 7th and 8th grade at Lairon College Preparatory Academy will be reassigned to Sylvandale Middle School. While transportation services are not currently planned for these students, in the future the District may consider providing transportation for those living more than a mile from Sylvandale Middle School.

George Shirakawa Sr. School

Students entering 7th and 8th grade from George Shirakawa Sr. School will be reassigned to either Sylvandale Middle School or Bridges Academy. The students residing in the Communications Hill attendance area will attend Sylvandale Middle School, and receive pick-up and drop-off transportation service. The students residing in the San Jose Avenue and Monterey Highway attendance areas will attend Bridges Academy, and receive pick-up and drop-off transportation service.

Proposed Grade Reconfigurations

The closure of Los Arboles, McKinley, and Ramblewood Elementary Schools necessitates grade reconfigurations at Lairon College Preparatory Academy and George Shirakawa Sr. School as follows:

- Lairon College Preparatory Academy, currently serving grades 4-8, will be reconfigured to serve grades K-6. This change integrates Los Arboles Elementary School's K-3 programs into Lairon's operations; and
- George Shirakawa Sr. School, currently serving grades K-8, will be reconfigured to serve grades K-6.

Enrollment and Operational Capacity of Receiving Schools

Tables 2, [Comparison of Peak Enrollment, Projected Enrollment and Capacity of Receiving Schools](#), evaluates the capacity of receiving schools to accommodate students following the closure of Los Arboles, McKinley, and Ramblewood Elementary Schools, grade reconfigurations at Lairon College Preparatory Academy and George Shirakawa Sr. School, and projected transitions to College Connection Academy.

Enrollment projections for the 2025-26 academic year account for both inter- and intra-district transfers. Historical peak enrollment data confirm that all receiving schools have previously operated at levels exceeding the projected 2025-26 enrollment and have sufficient capacity to accommodate the anticipated student population.

Table 2 Comparison of Peak Enrollment, Projected Enrollment and Capacity of Receiving Schools

School	Peak Student Enrollment (Year)	2025-26 Projected Enrollment ¹	Operational Capacity	Excess Capacity
Bridges Academy	1,016 (1997-98)	342	890	548
G.W. Hellyer Elementary	787 (1999-00)	599	632	33
Lairon College Preparatory Academy	784 (1998-99)	323	732	409
Santee Elementary	893 (2004-05)	494	532	38
George Shirakawa Sr. School	906 (2013-14)	401	912	511
Sylvandale Middle	1,137 (1997-98)	498	1,164	666
College Connection Academy	239 (2020-21)	211	288	77

SOURCE: Data Quest, 2025; PowerSchool, 2025; Franklin-McKinley School District School Consolidation Advisory Committee Report and Recommendations to the Board of Trustees, 2025

NOTE: 1 Projections provided by PowerSchool; District staff has added data regarding intra-district transfers.

Potential Physical Changes at Receiving Schools

The District does not anticipate the need for additional classroom facilities at any receiving schools to accommodate increased enrollment. However, to account for potential future needs, the environmental analysis includes the possible addition of one restroom facility at G.W. Hellyer Elementary and one at Santee Elementary to assess any potential environmental impacts. Although the schools may not need these new restrooms, they are included in the event they are added.

The restroom facility would have a uniform design at both school sites, measuring approximately 12 feet by 40 feet, with dedicated stall and sink space for girls (200 sq. ft.), staff (80 sq. ft.), and boys (200 sq. ft.). [Attachment C](#) provides the preliminary design and potential restroom locations at each school.

At each campus, the restroom facility would be located adjacent to an existing building, with no modifications to existing structures or tree removal necessary. The installation of these restroom facilities would be intended to support future operational needs and would not increase enrollment capacity at any of the receiving schools.

Environmental Setting at Receiving Elementary Schools

Bridges Academy

Bridges Academy, located at 1702 McLaughlin Avenue, is situated within a developed residential area, surrounded by residential neighborhoods to the north, east, west, and south. U.S. Highway 101 is less than one mile northeast of the school.

Nearby schools include Santee Elementary School, located approximately 0.12 miles northwest, and Kennedy Elementary School, approximately 0.31 miles west.

G.W. Hellyer Elementary School

G.W. Hellyer Elementary School, located at 725 Hellyer Avenue, is situated within a developed residential area, surrounded by residential uses in all directions, with Family Life Church located just beyond the residential area to the east. A solar farm is located approximately 0.28 miles northeast of the school. Sylvandale Middle School is located approximately 0.32 miles northwest. Additionally, Coyote Creek is located approximately 0.44 miles east of G.W. Hellyer Elementary School.

Lairon College Preparatory Academy

Lairon College Preparatory Academy, located at 3975 Mira Loma Way, is situated within a developed residential area, bordered by residential neighborhoods to the northeast, east, south, and west. Immediately northwest, Seven Trees Educational Center borders the school. East Capital Expressway is located approximately 0.24 miles west, and Monterey Road is located approximately 0.4 miles southwest.

Santee Elementary School

Santee Elementary School, located at 1313 Audubon Drive, is situated within a developed residential area, bordered by residential neighborhoods to the north, east, and south. To the west, the school is adjacent to residences, and beyond McLaughlin Avenue, the Holy Korean Martyrs Catholic Church. U.S. Highway 101 is approximately 0.29 miles northeast. Bridges Academy is approximately 0.12 miles southeast, and Kennedy Elementary School is approximately 0.29 miles southwest of Santee Elementary School.

George Shirakawa Sr. School

George Shirakawa Sr. School, located at 665 Wool Creek Drive, is situated in a mixed-use area that includes heavy industrial, light industrial, agricultural, planned development, and residential zoning. To the west, the school is adjacent to the Franklin-McKinley School District Office; to the south, it is bordered by commercial and light industrial properties. To the east and north, the school is bordered by Coyote Creek. Yerba Buena High School is located approximately 0.2 miles northwest.

Sylvandale Middle School

Sylvandale Middle School, located at 653 Sylvandale Avenue, is situated within a developed residential area, surrounded by residential neighborhoods in all directions. Coyote Creek is approximately 0.29 miles northeast, and G.W. Hellyer Elementary School is approximately 0.32 miles southeast.

Statutory Exemption

The proposed project qualifies for a statutory exemption under Article 18, Section 15282(i).

Section 15282(i) Closing Any Public School or Transfer of Students

The closing of any public school or the transfer of students from that public school to another school in which kindergarten or any grades 1 through 12 is maintained as set forth in 21080.18 of the Public Resources Code.

PRC 21080.18 states:

Application of Division to Closing of Public School Maintaining Kindergarten or Any of Grades 1 Through 12. This division does not apply to the closing of any public school in which kindergarten or any of grades 1 through 12 is maintained or the transfer of students from that public school to another school if the only physical changes involved are categorically exempt under Chapter 3 (commencing with Section 15000) of Division 6 of Title 14 of the California Administrative Code.

Discussion. The proposed project qualifies for this exemption as it involves the closure of Los Arboles, McKinley, and Ramblewood Elementary Schools and the consolidation of operations into Bridges Academy, G.W. Hellyer Elementary, Lairon College Preparatory Academy, George Shirakawa Sr. School, Sylvandale Middle School, and Santee Elementary. Grade reconfigurations will accompany the school closure and consolidation efforts. Lairon College Preparatory Academy, currently serving grades 4-8, will be reconfigured to serve grades K-6. George Shirakawa Sr. School, which currently serves grades K-8, will also be reconfigured to serve grades K-6.

The receiving schools are expected to accommodate the projected 2025-26 enrollment without the need for portable classrooms. However, to account for potential future needs, the District is considering the potential addition of a single restroom facility at G.W. Hellyer Elementary and one at Santee Elementary School. The installation of these restroom facilities would not increase enrollment capacity at any receiving school. Refer to the categorical exemptions below, specifically Section 15314, Minor Addition to Schools.

Categorical Exemptions

The proposed project qualifies for a categorical exemption under Article 19, Section 15301, Section 15303, Section 15311, Section 15314, and Section 15322 of the California Environmental Quality Act (CEQA).

Section 15301 Existing Facilities

Class 1 consists of the operation, repair, maintenance, permitting, leasing, licensing, or minor alteration of existing public or private structures, facilities, mechanical equipment, or topographical features, involving negligible or *no expansion of existing or former use* (emphasis added). The types of “existing facilities” itemized below are not intended to be all-inclusive of the types of projects which might fall within Class 1. The key consideration is whether the project involves negligible or no expansion of use. Examples include but are not limited to:

- (a) Interior or exterior alterations involving such things as interior partitions, plumbing, and electrical conveyances;
- (b) Existing facilities of both investor and publicly owned utilities used to provide electric power, natural gas, sewerage, or other public utility services;
- (c) Existing highways and streets, sidewalks, gutters, bicycle and pedestrian trails, and similar facilities (this includes road grading for the purpose of public safety), and other alterations such as the addition of bicycle facilities, including but not limited to bicycle parking, bicycle-share facilities and bicycle lanes, transit improvements such as bus lanes, pedestrian crossings, street trees, and other similar alterations that do not create additional automobile lanes);
- (d) Restoration or rehabilitation of deteriorated or damaged structures, facilities, or mechanical equipment to meet current standards of public health and safety, unless it is determined that the damage was substantial and resulted from an environmental hazard such as earthquake, landslide, or flood;
- (e) Additions to existing structures provided that the addition will not result in an increase of more than:
 - (1) 50 percent of the floor area of the structures before the addition, or 2,500 square feet, whichever is less; or
 - (2) 10,000 square feet if:
 - (A) The project is in an area where all public services and facilities are available to allow for maximum development permissible in the General Plan and
 - (B) The area in which the project is located is not environmentally sensitive.
- (f) Addition of safety or health protection devices for use during construction of or in conjunction with existing structures, facilities, or mechanical equipment, or topographical features including navigational devices;
- (g) New copy on existing on and off-premise signs;
- (h) Maintenance of existing landscaping, native growth, and water supply reservoirs (excluding the use of pesticides, as defined in Section 12753, Division 7, Chapter 2, Food and Agricultural Code);
- (i) Maintenance of fish screens, fish ladders, wildlife habitat areas, artificial wildlife waterway devices, streamflows, springs and

waterholes, and stream channels (clearing of debris) to protect fish and wildlife resources;

- (j) Fish stocking by the California Department of Fish and Game;
- (k) Division of existing multiple family or single-family residences into common-interest ownership and subdivision of existing commercial or industrial buildings, where no physical changes occur which are not otherwise exempt;
- (l) Demolition and removal of individual small structures listed in this subdivision:
 - (1) One single-family residence. In urbanized areas, up to three single-family residences may be demolished under this exemption.
 - (2) A duplex or similar multifamily residential structure. In urbanized areas, this exemption applies to duplexes and similar structures where not more than six dwelling units will be demolished.
 - (3) A store, motel, office, restaurant, or similar small commercial structure if designed for an occupant load of 30 persons or less. In urbanized areas, the exemption also applies to the demolition of up to three such commercial buildings on sites zoned for such use.
 - (4) Accessory (appurtenant) structures including garages, carports, patios, swimming pools, and fences.
- (m) Minor repairs and alterations to existing dams and appurtenant structures under the supervision of the Department of Water Resources.
- (n) Conversion of a single family residence to office use.
- (o) Installation, in an existing facility occupied by a medical waste generator, of a steam sterilization unit for the treatment of medical waste generated by that facility provided that the unit is installed and operated in accordance with the Medical Waste Management Act (Section 117600, et seq., of the Health and Safety Code) and accepts no offsite waste.
- (p) Use of a single-family residence as a small family day care home, as defined in Section 1596.78 of the Health and Safety Code.

Discussion. The proposed project qualifies for this exemption as each receiving school is an existing facility, and the project involves the operation and minor alteration of these facilities with negligible or no expansion of existing or former use. The receiving schools are expected to accommodate the projected 2025-26 enrollment without requiring portable classrooms.

However, to account for potential future needs, the District is considering the potential addition of a single restroom facility at G.W. Hellyer Elementary and one at Santee Elementary School. These restroom facilities would not increase enrollment capacity at any receiving school.

Section 15303 New Construction or Conversion of Small Structures

Class 3 consists of construction and location of limited numbers of new, small facilities or structures; installation of small new equipment and facilities in small structures; and the conversion of existing small structures from one use to another where only minor modifications are made in the exterior of the structure. The numbers of structures described in this section are the maximum allowable on any legal parcel. Examples of this exemption include, but are not limited to:

- (a) One single-family residence, or a second dwelling unit in a residential zone. In urbanized areas, up to three single-family residences may be constructed or converted under this exemption.
- (b) A duplex or similar multi-family residential structure, totaling no more than four dwelling units. In urbanized areas, this exemption applies to apartments, duplexes and similar structures designed for not more than six dwelling units.
- (c) A store, motel, office, restaurant or similar structure not involving the use of significant amounts of hazardous substances, and not exceeding 2500 square feet in floor area. In urbanized areas, the exemption also applies to up to four such commercial buildings not exceeding 10,000 square feet in floor area on sites zoned for such use if not involving the use of significant amounts of hazardous substances where all necessary public services and facilities are available and the surrounding area is not environmentally sensitive.
- (d) Water main, sewage, electrical, gas, and other utility extensions, including street improvements, of reasonable length to serve such construction.
- (e) Accessory (appurtenant) structures including garages, carports, patios, swimming pools, and fences.
- (f) An accessory steam sterilization unit for the treatment of medical waste at a facility occupied by a medical waste generator, provided that the unit is installed and operated in accordance with the Medical Waste Management Act (Section 117600, et seq., of the Health and Safety Code) and accepts no offsite waste.

Discussion. The proposed project qualifies for this exemption as it may include the addition of a single restroom facility at G.W. Hellyer Elementary and one at Santee Elementary School. These restroom facilities would not increase enrollment capacity at any receiving school.

The receiving schools are expected to accommodate the projected 2025-26 enrollment without requiring portable classrooms, and no physical modifications beyond the potential restroom additions are anticipated.

Section 15311 Accessory Structures

Class 11 consists of construction, or placement of minor structures accessory to (appurtenant to) existing commercial, industrial, or institutional facilities, including but not limited to:

- (a) On-premise signs;
- (b) Small parking lots;
- (c) Placement of seasonal or temporary use items such as lifeguard towers, mobile food units, portable restrooms, or similar items in generally the same locations from time to time in publicly owned parks, stadiums, or other facilities designed for public use.

Discussion. The proposed project qualifies for this exemption as it may include the addition of a single restroom facility at G.W. Hellyer Elementary and one at Santee Elementary School. These restroom facilities would not increase enrollment capacity at any receiving school. The receiving schools are expected to accommodate the projected 2025-26 enrollment without requiring portable classrooms, and no physical modifications beyond the potential restroom additions are anticipated.

Section 15314 Minor Addition to Schools

Class 14 consists of minor additions to existing schools within existing school grounds where the addition does not increase original student capacity by more than 25% or ten classrooms, whichever is less. The addition of portable classrooms is included in this exemption.

Discussion. The proposed project qualifies for this exemption as it may include the addition of a single restroom facility at G.W. Hellyer Elementary and one at Santee Elementary School. These restroom facilities would not increase enrollment capacity at any receiving school. The receiving schools are expected to accommodate the projected 2025-26 enrollment without requiring portable classrooms, and no physical modifications beyond the potential restroom additions are anticipated.

As shown in [Table 2](#) (page 4), the projected 2025-26 enrollment indicates that all receiving schools will have excess capacity after consolidation. While all receiving schools have sufficient capacity, including available space, the possible restroom additions would be solely intended to support future operational needs and would not expand enrollment capacity. Therefore, the proposed consolidation and grade reconfigurations, including the potential future addition of restroom facilities would not result in a 25 percent increase in enrollment or the addition of 10 classrooms.

Section 15322 Educational or Training Programs Involving no Physical Changes

Class 22 consists of the adoption, alteration, or termination of educational or training programs which involve no physical alteration in the area affected or

which involve physical changes only in the interior of existing school or training structures. Examples include but are not limited to:

- (a) Development of or changes in curriculum or training methods.
- (b) Changes in the grade structure in a school which do not result in changes in student transportation.

Discussion. The Franklin-McKinley School District approved the closure of Los Arboles, McKinley, and Ramblewood Elementary Schools, along with grade reconfigurations at Lairon College Preparatory Academy and George Shirakawa Sr. School (Resolution 2025-07, February 2025).

This exemption is applicable as the project involves modification of educational programs through the closure of three schools and the consolidation of operations into six receiving schools. Among the receiving schools, Bridges Academy and Sylvandale Middle School are not expected to undergo any physical changes. Should the restroom facilities at G.W. Hellyer Elementary and Santee Elementary, as discussed throughout this report, not be implemented, this exemption would also extend to those schools.

Environmental Analysis

Aesthetics

None of the receiving schools are located within a designated scenic area (Caltrans 2025; City of San Jose 2016). The closure of Los Arboles, McKinley, and Ramblewood Elementary Schools, along with the consolidation of operations and grade reconfigurations at the receiving schools, may include the potential future addition of a single restroom facility at G.W. Hellyer Elementary and one at Santee Elementary School. These additions would not result in a significant aesthetic or visual impact on the environment. The project would not affect any scenic vistas, damage scenic resources within a state scenic highway, conflict with applicable zoning or other regulations governing scenic quality, or create a new source of substantial light or glare that would adversely affect day or nighttime views in the area.

Agriculture and Forest Resources

None of the receiving schools are located on agricultural land nor do they contain forest resources (City of San Jose 2012). The closure of Los Arboles, McKinley, and Ramblewood Elementary Schools, along with the consolidation of operations and grade reconfigurations at the receiving schools, would not result in the conversion of important farmland, conflict with existing zoning for agricultural or forest land uses or an active Williamson Act contract.

Biological Resources

All receiving schools are located within developed residential neighborhoods, except George Shirakawa Sr. School, which is situated in a developed area with a mix of industrial, planned

development, and residential uses. None of the schools are located in areas typically associated with sensitive biological resources, with the possible exception of George Shirakawa Sr. School, which is also located adjacent to Coyote Creek. However, no physical improvements are proposed at George Shirakawa Sr. School, and therefore, there would be no impacts to the creek or associated sensitive habitat.

The following discussion addresses the potential future addition of a single restroom facility at G.W. Hellyer Elementary and one at Santee Elementary School.

G.W. Hellyer Elementary School

G.W. Hellyer Elementary School is surrounded by residential uses in all directions, with Family Life Church located just beyond the residential area to the east. A restroom facility may be installed in the central area of the campus, adjacent to school buildings, a play structure, and an open space/recreational area. The designated site is already paved and does not contain any trees that would be impacted by the installation.

Santee Elementary School

Santee Elementary School is surrounded by residential uses in all directions, with the Holy Korean Martyrs Catholic Church located just beyond the residential area to the west. A restroom facility may be installed in the northern area of the campus, adjacent to school buildings and an open space/recreational area. The designated site is already paved and does not contain any trees that would be affected by the installation.

Cultural Resources

The closure of Los Arboles, McKinley, and Ramblewood Elementary Schools, along with the consolidation of operations and grade reconfigurations at the receiving schools, including the potential future addition of a single restroom facility at G.W. Hellyer Elementary and one at Santee Elementary School, does not include earth-moving activities that might result an adverse change in the significance of any unknown buried historical resource pursuant to § 15064.5, cause an adverse change in the significance of an unknown archaeological resource pursuant to § 15064.5, or disturb any unknown Native American human remains, including those interred outside of dedicated cemeteries.

Geology and Soils

All receiving schools are located within liquefaction zones (California Department of Conservation, 2025). To mitigate potential liquefaction impacts, the District will adhere to applicable California Building Code Regulations, as adopted by the Division of the State Architect, which oversees school construction projects to ensure proper building design associated with the potential new restroom buildings. Compliance with these standards will prevent adverse effects, including the risk of loss, injury, or death due to liquefaction.

The closure of Los Arboles, McKinley, and Ramblewood Elementary Schools, along with the consolidation of operations and grade reconfigurations at the receiving schools, including the potential future addition of a single restroom facility at G.W. Hellyer Elementary and one at Santee Elementary School, would not result in direct or indirect potential adverse effect, including the risk of loss, injury, or death involving any of the following:

- rupture of a known earthquake fault, as delineated on the most recent Alquist-Priolo Earthquake Fault Zoning Map, issued by the State Geologist for the area or based on other substantial evidence of a known fault;
- strong seismic ground shaking;
- seismic-related ground failure, including liquefaction; or
- landslides.

Additionally, the project would not result in soil erosion or the loss of topsoil, be located on a geologic unit or soil that is unstable, or that would become unstable as a result of the project, and potentially result in on- or off-site landslide, lateral spreading, subsidence, liquefaction or collapse.

Hydrology and Water Quality

The closure of Los Arboles, McKinley, and Ramblewood Elementary Schools, along with the consolidation of operations and grade reconfigurations at the receiving schools, would not result in a cumulative increase in the student population within the District; therefore, water use within the District would not increase. Conversely, with student enrollment declining over the years, water use at District facilities has decreased. Additionally, the possible addition of restroom facilities would not require significant earth-moving activities. Therefore, the project would not violate any water quality standards or waste discharge requirements or otherwise degrade surface or ground water quality; decrease groundwater supplies or interfere with groundwater recharge; alter the existing drainage pattern of the site or area, including through the alteration of the course of a stream or river or through the addition of impervious surfaces, in a manner which would result in a substantial erosion or siltation on- or off-site; increase the rate or amount of surface runoff in a manner which would result in flooding on- or offsite; create or contribute runoff water which would exceed the capacity of existing or planned stormwater drainage systems or provide substantial additional sources of polluted runoff; or impede or redirect flood flows; or conflict with or obstruct implementation of a water quality control plan or sustainable groundwater management plan.

Transportation (Vehicle Miles Traveled)

Hexagon Transportation Consultants (Hexagon) conducted a Vehicle Miles Traveled (VMT) study to assess the impacts of closing Los Arboles, McKinley, and Ramblewood Elementary Schools, grade reconfigurations at Lairon College Preparatory Academy and George Shirakawa Sr. School, and the transfer of students to six receiving schools.

For the VMT study, Hexagon evaluated two preliminary consolidation scenarios prior to the District recommending one. The District's selected scenario is reflected in this environmental analysis. The full VMT study is provided in [Appendix D](#).

Hexagon estimated the current average distance to school for Los Arboles students would decrease from 0.6 to 0.55 miles, and for Ramblewood students it would decrease from one mile to 0.92 miles. Conversely, the current average distance to school for McKinley students would increase from 0.47 miles to 1.81; for Shirakawa students it would increase from 3.06 miles to 3.38 miles; and for Lairon students it would increase from 0.55 miles to 0.84 miles. The increases at McKinley, Shirakawa, and Lairon are offset by broader district-wide enrollment declines, which have led to a significant reduction in total student enrollment over the past 25 years. As a result, the district-wide VMT is expected to decrease by 37.3 percent when compared to the combined peak year of enrollment baseline.

Air Quality

San Jose is within the jurisdiction of the Bay Area Air Quality Management District (hereinafter "air district"), which regulates criteria air emissions to comply with state and federal standards. The air district establishes significance thresholds for criteria air pollutants to assess the significance of air quality impacts under CEQA, including those from proposed new schools. Transportation sources, particularly passenger cars and light-duty trucks, are the primary contributors to air emissions for such projects, including schools. As described in the Transportation section, the project would result in an overall decrease in vehicle miles traveled; therefore, there would be no adverse impact associated with air quality.

Greenhouse Gas Emissions

Similar to the discussion under Air Quality above, the greenhouse gas (GHG) emissions inventory (the sum of emissions from all sources) for project subject to CEQA, including school operations, are typically dominated by emissions from transportation sources, particularly passenger cars and light-duty trucks.

As described in the Transportation section, the project would result in an overall decrease in vehicle miles traveled; therefore, there would be no adverse impact associated with greenhouse gas emissions.

Energy

Electricity, natural gas, and transportation fuel are the most common forms of energy used in the operation of land use projects, including schools. As described in the Transportation section, the project would result in an overall decrease in vehicle miles traveled; therefore, there would be no adverse impact associated with transportation energy use. Additionally, closing and consolidating schools could result in a reduction of District-wide electricity and natural gas.

Noise

The closure of Los Arboles, McKinley, and Ramblewood Elementary Schools, along with the consolidation of operations and grade reconfigurations at the receiving schools, including the potential addition of a single restroom facility at G.W. Hellyer Elementary and one at Santee Elementary School, would not result in significant noise impacts. Due to a steady decline in enrollment, traffic volumes on surrounding streets have decreased and would remain lower with project implementation, compared to peak enrollment levels at all receiving schools (Table 2, page 4). As a result, noise levels at all receiving schools would remain below historic levels.

Exceptions to Categorical Exemptions

Section 15300.2 of the CEQA Guidelines lists exceptions that would prohibit a project from qualifying for a Categorical Exemption, even if the project satisfies the requirements for one or more of the exemption classes. EMC Planning Group conducted a review and evaluation of the proposed project and concluded that none of the exceptions listed in CEQA Guidelines section 15300.2 (a-f) apply to the proposed project (discussed below). Therefore, the Statutory Exemption, as well as the Categorical Exemption, is appropriate pursuant to CEQA Guidelines Sections 15301, 15303, 15311, 15314, and 15322.

- a) Location. Classes 3, 4, 5, 6, and 11 are qualified by consideration of where the project is to be located – a project that is ordinarily insignificant in its impact on the environment may in a particularly sensitive environment be significant. Therefore, these classes are considered to apply all instances, except where the project may impact on an environmental resource of hazardous or critical concern where designated, precisely mapped, and officially adopted pursuant to law by federal, state, or local agencies.

Discussion. The receiving schools are located within existing, developed residential areas in the City of San Jose, with the exception of George Shirakawa Sr. School, which is situated in a developed area with a mix of industrial, planned development, and residential uses. There is no evidence to suggest that the receiving schools, where physical changes may occur, are located in particularly sensitive environments. See the Environmental Analysis discussion above.

- b) Cumulative Impact. All exemptions for these classes are inapplicable when the cumulative impact of successive projects of the same type in the same place, over time is significant.

Discussion. This project is a cumulative project, in that it includes closure of more than one school and reconfiguration of others. The District comprises a total of 16 elementary and middle schools. This project involves closing three elementary schools—Los Arboles, McKinley, and Ramblewood—and reconfiguring grade levels at Lairon College Preparatory Academy and George Shirakawa Sr. School. These changes will be managed through consolidation at six receiving schools: Bridges Academy, G.W. Hellyer Elementary, Lairon College Preparatory Academy, George

Shirakawa Sr. School, Sylvandale Middle School, and Santee Elementary School. The District is not planning other successive projects of the same type in the same place. Therefore, there is no cumulative impact that would be significant.

- c) Significant Effect. A categorical exemption shall not be used for an activity where there is a reasonable possibility that the activity will have a significant effect on the environment due to unusual circumstances.

Discussion. Based upon the Environmental Analysis discussion above, there is no reasonable possibility that the proposed project would have a significant effect on the environment due to unusual circumstances

- d) Scenic Highways. A categorical exemption shall not be used for a project which may result in damage to scenic resources, including but not limited to, trees, historic buildings, rock outcroppings, or similar resources, within a highway officially designated as a state scenic highway. This does not apply to improvements which are required as mitigation by an adopted negative declaration or certified EIR.

Discussion. According to the California Department of Transportation Scenic Highway Map, none of the receiving schools are located near an officially designated scenic highway (Caltrans 2025). Additionally, none of the receiving schools are within a designated scenic corridor (City of San Jose 2016).

The proposed project involves the closure of Los Arboles, McKinley, and Ramblewood Elementary Schools and the consolidation of operations and grade reconfigurations at six receiving schools. These closures would not involve any physical modifications to the respective sites and, therefore, would not impact scenic resources. At G.W. Hellyer Elementary and Santee Elementary School, the District is considering the potential future addition of a single restroom facility at each campus. However, since none of the schools are located near a designated scenic highway or within a scenic corridor, the project would not result in adverse impacts to scenic resources associated with a state scenic highway.

- e) Hazardous Waste Sites. A categorical exemption shall not be used for a project located on a site which is included on any list compiled pursuant to Section 65962.5 of the Government Code.

Discussion. The proposed project is not located on a site that is included on any list compiled pursuant to Section 65962.5 of the Government Code. The receiving school sites are not located on the California Environmental Protection Agency's Cortese List (Health and Safety Code Section 25187.5). The State Water Resources Control Board's GeoTracker (Health and Safety Code Section 25295 and Water Code Sections 13273 and 13301) does not indicate any hazardous sites at any of the receiving schools. The receiving school sites are not listed on the California Environmental Protection Agency's list of solid waste sites identified by the Water Board with waste constituents

above hazardous waste levels outside the waste management unit (Health and Safety Code Section 116395).

- f) **Historical Resources.** A categorical exemption shall not be used for a project which may cause a substantial adverse change in the significance of a historical resource.

Discussion. The proposed project does not include any physical modifications to existing buildings associated with the closure of Los Arboles, McKinley, or Ramblewood Elementary Schools. Additionally, none of the receiving schools are identified as a historically significant resource (City of San Jose 2025). Therefore, the possible future addition of restroom facilities at G.W. Hellyer Elementary and Santee Elementary School would not result in a substantial adverse change to a historical resource.

Evidence And Findings

The proposed project involves the closure of Los Arboles, McKinley, and Ramblewood Elementary Schools, along with the adjustment of attendance boundaries to support the consolidation of operations into Bridges Academy, G.W. Hellyer Elementary, Lairon College Preparatory Academy, George Shirakawa Sr. School, Sylvandale Middle School, and Santee Elementary School.

To account for potential future needs, this environmental analysis conservatively includes the possible addition of one restroom facility at G.W. Hellyer Elementary and one at Santee Elementary School. While these facilities may ultimately not be required, their inclusion ensures that any potential environmental impacts are fully evaluated.

The receiving schools are expected to accommodate projected 2025–26 enrollment without the need for portable classrooms, and no physical modifications beyond the potential restroom additions are anticipated. As shown in [Table 2](#) (page 4), enrollment projections for the 2025-26 academic year indicate that all receiving schools will have sufficient capacity after consolidation. The possible restroom additions are intended solely to support future operational needs and would not increase enrollment capacity at any of the receiving schools.

Sources

Project Description

California Department of Education. “California School Directory: Ramblewood Elementary.”

Accessed on February 28, 2025.

<https://www.cde.ca.gov/schooldirectory/details?cdscode=43694500108696>

California Department of Education. “California School Directory: Shirakawa (George, Sr.) Elementary.” Accessed on February 28, 2025.

<https://www.cde.ca.gov/SchoolDirectory/details?cdscode=43694506115943>

California Department of Education. “California School Directory: College Connection Academy.” Elementary.” Accessed on February 28, 2025.

<https://www.cde.ca.gov/SchoolDirectory/details?cdscode=43694500127225>

Environmental Setting

City of San Jose. 2025. “Zoning Map.” Accessed on March 3, 2025.

<https://experience.arcgis.com/experience/c23301b236d041d5a5358a5dce1e989d>

Aesthetics

Caltrans. 2025. “California State Scenic Highway System Map.” Accessed on March 3, 2025.

<https://caltrans.maps.arcgis.com/apps/webappviewer/index.html?id=465dfd3d807c46cc8e8057116f1aaca>

City of San Jose. June 2016. “Envision San Jose 2040 General Plan Scenic Corridors Diagram.” Accessed on March 3, 2025.

<https://www.sanjoseca.gov/home/showpublisheddocument/22565/636688980487230000>

Agriculture and Forest Resources

City of San Jose. March 2012. “Envision San Jose 2040 General Plan Land Use/Transportation Diagram.” Accessed on March 3, 2025.

<https://www.sanjoseca.gov/home/showpublisheddocument/22555/636688980471600000>

Biological Resources

Google Earth. 2025.

Geology and Soils

California Department of Conservation. 2025. “Earthquake Zones of Required Investigation.” Accessed on March 5, 2025.

<https://maps.conservation.ca.gov/cgs/informationwarehouse/eqzapp/>

Transportation (Vehicle Miles Traveled)

Hexagon Transportation Consultants, Inc. 2025. *VMT Study for Franklin-McKinley School District School Consolidation Plan*.

Air Quality

Hexagon Transportation Consultants, Inc. 2025. *VMT Study for Franklin-McKinley School District School Consolidation Plan*.

Greenhouse Gas Emissions

Hexagon Transportation Consultants, Inc. 2025. *VMT Study for Franklin-McKinley School District School Consolidation Plan*.

Energy

Hexagon Transportation Consultants, Inc. 2025. *VMT Study for Franklin-McKinley School District School Consolidation Plan*.

Exceptions to Categorical Exemptions

California Environmental Protection Agency. 2025. "Cortese List Data Resources." Accessed on March 3, 2025. <https://calepa.ca.gov/sitecleanup/corteselist/>

City of San Jose. 2025. "Historical Resources Inventory Map." Accessed on March 3, 2025. <https://experience.arcgis.com/experience/4ef3418d9e58451c9c45086ac9a90d6e>

Franklin-McKinley School District Resolution No. 2025-07



**BEFORE THE BOARD OF EDUCATION
OF THE FRANKLIN-MCKINLEY SCHOOL DISTRICT
SANTA CLARA COUNTY, CALIFORNIA
RESOLUTION NO. 2025-07**

RESOLUTION APPROVING SCHOOL CONSOLIDATION

WHEREAS, Franklin-McKinley School District (“District”) has experienced significant declining enrollment over a protracted period of time, with the District experiencing a forty percent (40%) decrease in enrollment from 2011-12 (9,673 students) to 2024-2025 (5,766 students).

WHEREAS, the District requires an estimated \$22.9 million in total budget cuts by July 1, 2025, in order to maintain fiscal solvency and the legal-mandated minimum three percent (3%) reserve.

WHEREAS, at its September 10, 2024, regular Board meeting, as part of the District’s efforts to address the budget shortfalls, the Board unanimously approved the formation of the School Consolidation Advisory Committee (“Committee”) to study and recommend schools for closure and/or consolidation, based on data and established criteria;

WHEREAS, the Committee consisted of twenty-two (22) members appointed by the Board, and was comprised of parents (including special education parents), labor union representatives, community members, and District staff;

WHEREAS, the Committee considered community input, criteria recommended by the California Department of Education (“CDE”) and other data, and made recommendations for consolidation on January 22, 2025, which recommendations are included in the Committee’s Report and Recommendations to the Board of Education dated January 22, 2024. The Report is hosted on the School Consolidation Information Page of the District’s website, and available at: <https://www.fmsd.org/our-district1/school-consolidation>;

WHEREAS, consistent with Education Code section 17387 and CDE’s guidelines on school consolidation, the District engaged in a process to garner meaningful input and community involvement regarding school closure and/or consolidation scenarios, which has included, but not been limited to, the following activities:

- The District established the Committee to analyze the District’s school sites and make a recommendation regarding school consolidation;
- The Committee convened seven (7) public Committee meetings, held on October 17, 2024, October 30, 2024, November 6, 2024, November 20, 2024, December 4, 2024, January 8, 2024, and January 22, 2024;

- District staff conducted three (3) public town hall meetings at three (3) different locations within the District, held on October 16, 2024, October 23, 2024, and October 24, 2024;
- The District has maintained an active “School Consolidation Information Page” on the District’s website, which hosts resources pertaining to school closure and consolidation;
- The district has continued to share information on its social media platforms and eBlasts, and newsletters and FAQs on our website.
- The Board held a special Board meeting study session on February 4, 2025;
- The Board considered the recommendations on February 11, 2025 and postponed a decision until February 25, 2025;

WHEREAS, the Board has reviewed and considered the Committee’s Report and additional input received from the community; and

WHEREAS, consolidating some of the District’s campuses is part of an overall plan to reduce annual operational costs and maintain long term financial stability in the District.

NOW, THEREFORE, BE IT FOUND, DETERMINED, AND RESOLVED BY THE BOARD OF EDUCATION OF THE FRANKLIN-MCKINLEY SCHOOL DISTRICT, SANTA CLARA COUNTY, CALIFORNIA, AS FOLLOWS:

1. The foregoing recitals are adopted as true and correct.
2. Subject to the conditions set forth below, after consideration of the meaningful input and community involvement received throughout this process as outlined above, review of available data and of the Committee’s Report, consideration of the CDE’s guidelines, and consideration of the District’s Equity Framework, and in order to address projected budget shortfalls and declining enrollment, the Board approves the following consolidation of its schools and hereby finds and determines that the Consolidation is in the best interests of the District, its students, and the community:
 - a. At the conclusion of the 2024-2025 school year, the following schools shall close:
 - **McKinley Elementary**
 - **Los Arboles Literacy & Technology Academy**
 - **Ramblewood Elementary**
 - b. At the conclusion of the 2024-2025 school year, grades shall be reconfigured as specified below:

- **Lairon Academy to K-6**
- **Shirakawa to K-6**

3. The Board's approval of the foregoing closure and consolidation shall be subject to and conditioned upon the following, each of which shall be met prior to closure or consolidation of the schools identified above:
 - The District's attendance boundaries shall be revised in a manner that is consistent with the Education Code and Board Policy, and shall be presented to the Board for approval.
 - A transition plan shall be prepared that outlines the District's anticipated community outreach efforts to assist students and their families with the transition, and shall be presented to the Board.
 - Consideration pursuant to the California Environmental Quality Act (Pub. Res. Code, §§ 21000, et seq. ("CEQA")) of the foregoing closure and consolidation and the attendance boundary adjustment shall occur, including an analysis of whether any exemptions are applicable to the consolidation. The CEQA consideration shall be presented to the Board for review and approval.
4. The Superintendent, and/or his designee, are authorized and directed to take such further actions as may be necessary and appropriate to carry out the intent of this Resolution.

The foregoing Resolution was adopted at a regular meeting of the Board of Education of the Franklin-McKinley School District on February 25, 2025, by the following vote:

AYES: **3**
 NOES: **2**
 ABSTAIN: **0**
 ABSENT: **0**



 Board President
 Franklin-McKinley School District

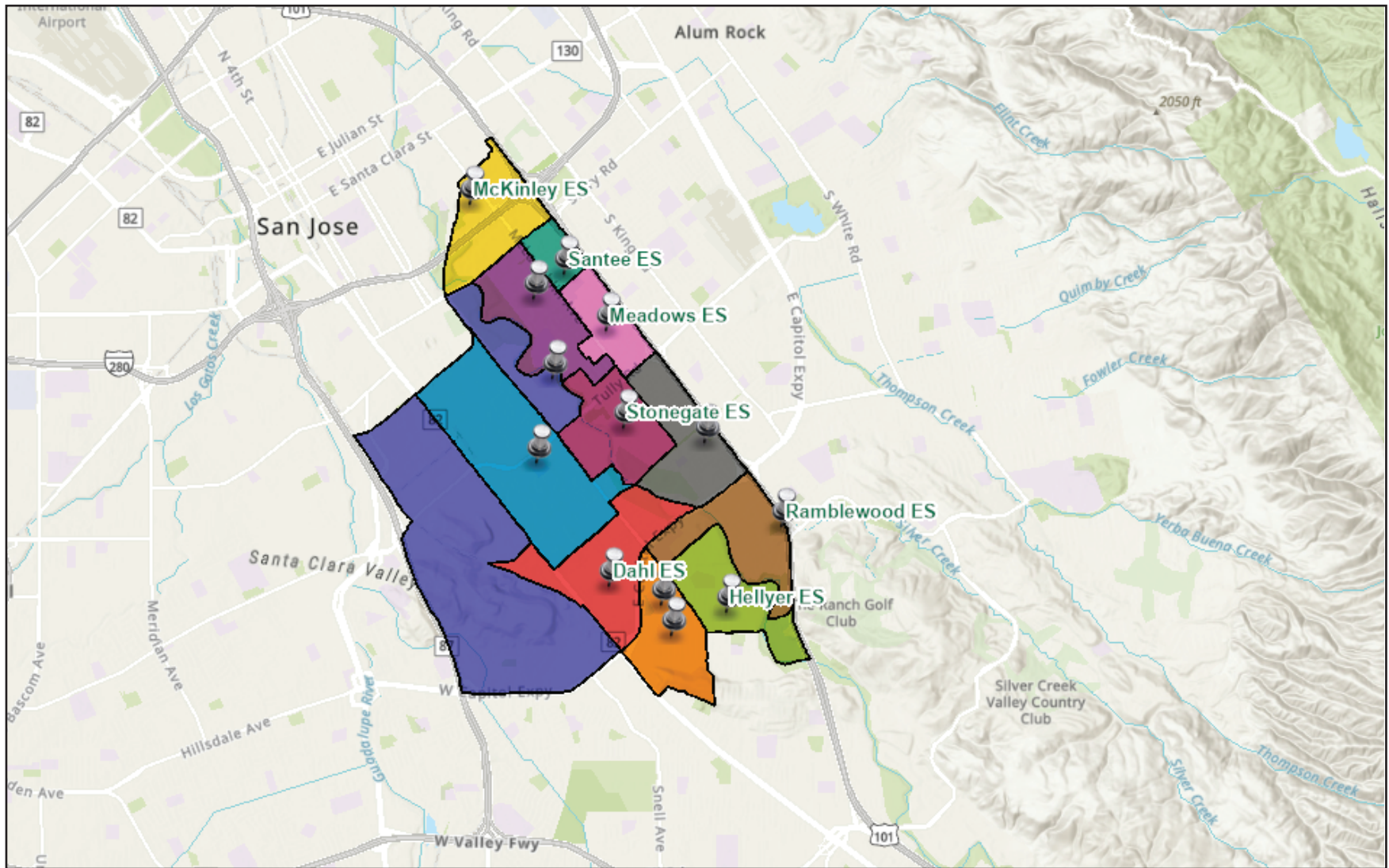
CERTIFIED TO BE A TRUE
 AND CORRECT COPY:



 Clerk
 Franklin-McKinley School District

Existing and Proposed Franklin-McKinley School District
School Attendance Boundaries



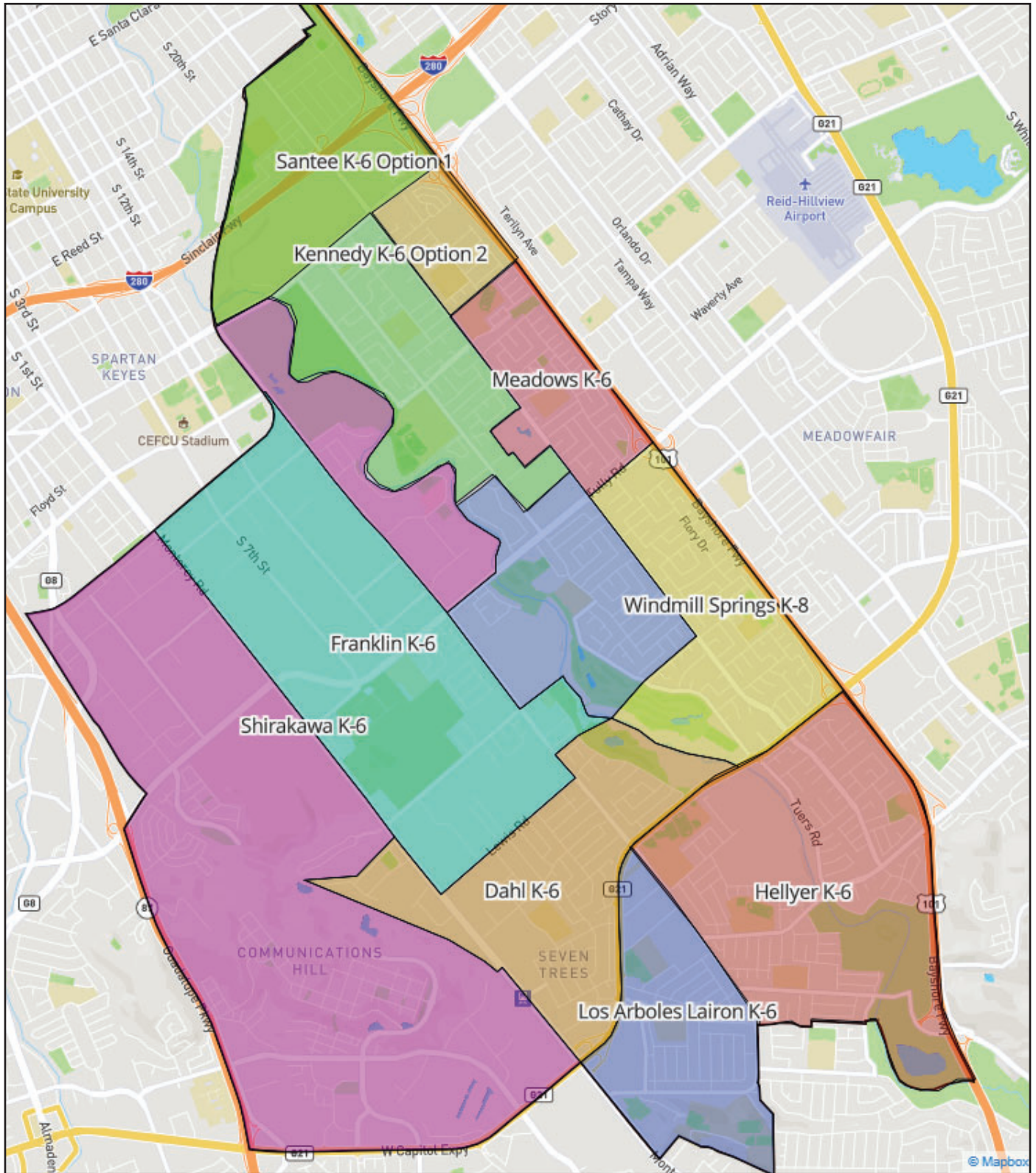


Source: Franklin-McKinley School District 2025

Figure 1
Existing Elementary School Attendance Boundary



Franklin-McKinley School District School Closures, Consolidation, and Attendance Boundary Adjustments



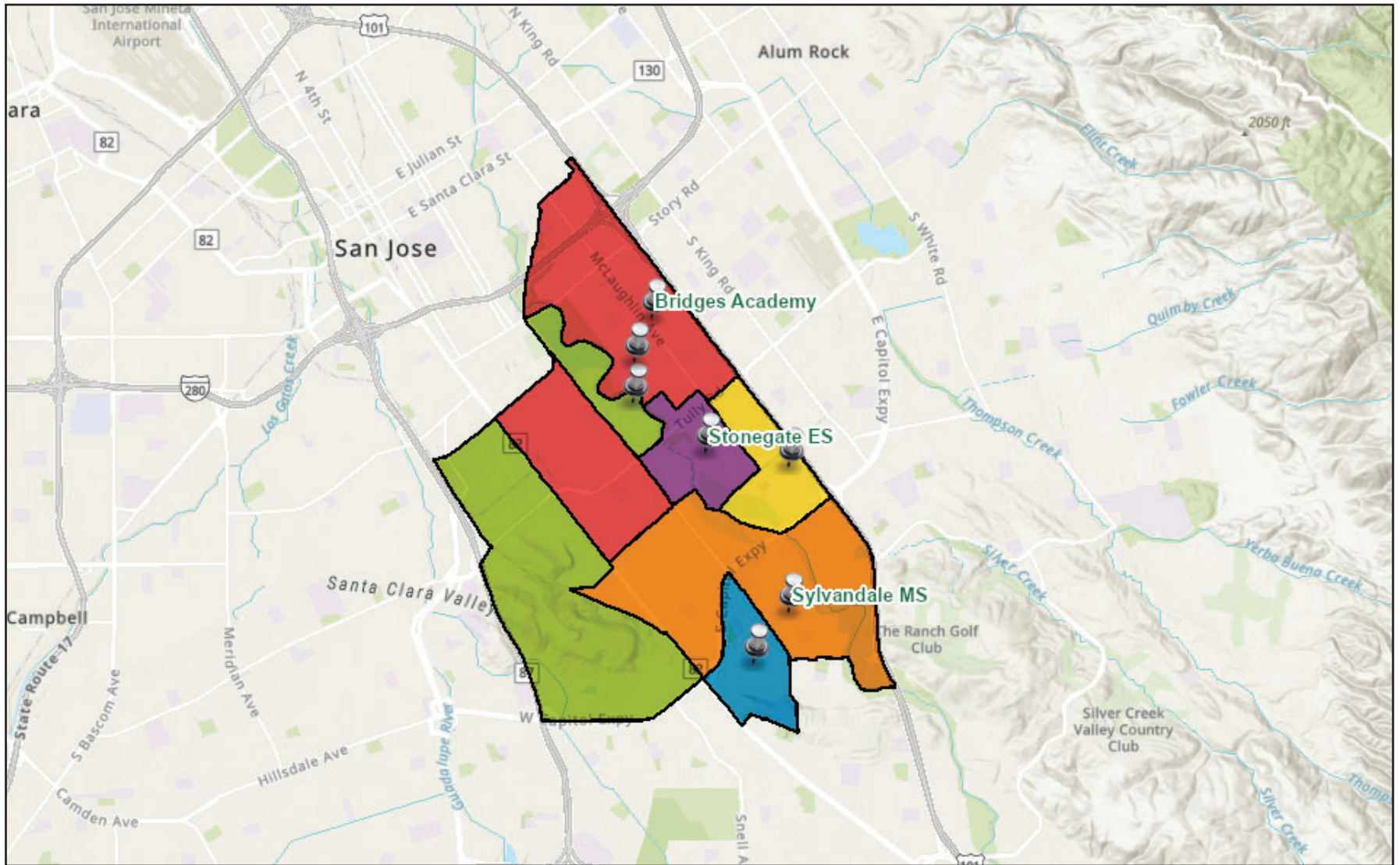
Source: Franklin-McKinley School District 2025

Figure 2

Proposed Elementary School Attendance Boundary

Franklin-McKinley School District School Closures,
Consolidation, and Attendance Boundary Adjustments



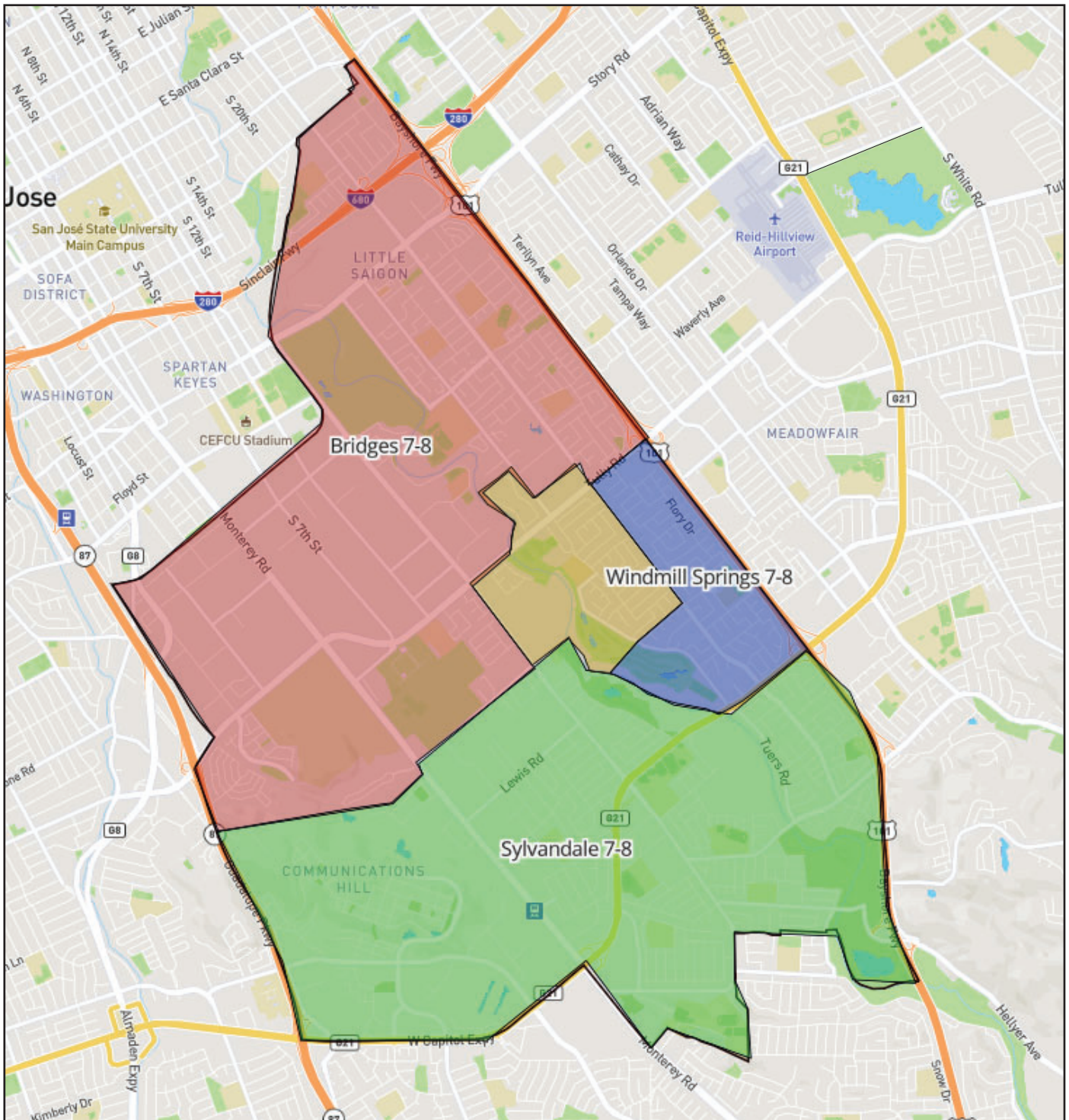


Source: Franklin-McKinley School District 2025

Figure 3
Existing Middle School Attendance Boundary



Franklin-McKinley School District School Closures, Consolidation, and Attendance Boundary Adjustments



Source: Franklin-McKinley School District 2025

Figure 4

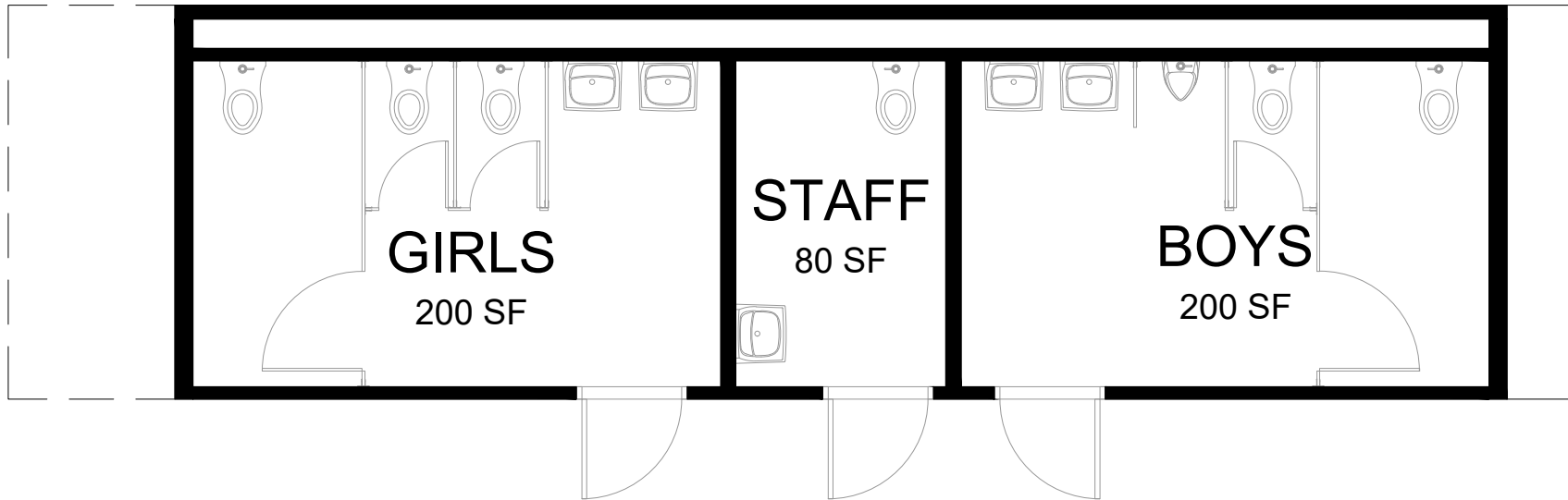
Proposed Middle School Attendance Boundary

Franklin-McKinley School District School Closures,
Consolidation, and Attendance Boundary Adjustments



Proposed Restroom Facility Preliminary Designs

C
APPENDIX



- ☐ GEN7
- ☐ EVOLVE
- ☐ FORM
- ☐ 2GO

12' x 40' GIRLS/STAFF/BOYS RESTROOM

DATE 12/11/20
CLIENT
PROJECT



ROBERT F. KENNEDY ELEMENTARY SCHOOL AND CORNERSTONE ACADEMY

16022 LUCRETIA AVENUE, SAN JOSE, CA 95122



Santee Elementary School

Santee Elementary School

Image taken 3/20/13

Hexagon Transportation Consultants VMT Study
for Franklin-McKinley School District
School Consolidation Plan





HEXAGON TRANSPORTATION CONSULTANTS, INC.

March 21, 2025

Ms. Teri Wissler Adam
EMC Planning Group
601 Abrego Street,
Monterey, CA 93940

Re: VMT Study for Franklin-McKinley School District School Consolidation Plan

Dear Ms. Adam:

Hexagon Transportation Consultants, Inc. has completed a Vehicle Miles Traveled (VMT) study of the planned school consolidation plan for Franklin-McKinley School District. We understand that the district has approved closing Los Arboles Elementary School, McKinley Elementary School, and Ramblewood Elementary School following the conclusion of the 2024-25 school year. Furthermore, George Shirakawa Sr. School and Lairon College Preparatory Academy will be reorganized, moving 7th and 8th grade students to other schools.

It is also our understanding that under this consolidation plan there are two proposed scenarios. In both scenarios, all students from Los Arboles will transfer to Lairon Elementary School, all students from Ramblewood will transfer to Hellyer Elementary School, some 7th and 8th grade students from Shirakawa will transfer to Bridges Academy with the other 7th and 8th grade students transferring to Sylvandale Middle School, and all 7th and 8th grade students from Lairon transferring to Sylvandale Middle School. The difference, in scenario 1 McKinley students are transferred to Santee Elementary School and George Shirakawa Sr. School, in scenario 2 McKinley students are transferred to R.F. Kennedy Elementary School and Shirakawa Elementary School (Table 2).

For the purposes of this study, charter schools have been excluded. Since charter school students may not reside near their schools and it is not possible to predict which students will attend which charter school or where those students reside, obtaining accurate distance calculations would be infeasible.

Background

The purpose of this report is to analyze the potential transportation impact of the School Consolidation Plan. Specifically, this analysis studies the impact on vehicles miles traveled (VMT) as required by the California Environmental Quality Act (CEQA). The City of San Jose specifically excludes public schools from VMT analysis. The San Jose policy notwithstanding, this report analyzes VMT for the school closure plan.

San Jose VMT Policy

The City of San Jose lays out in its VMT policy that “Public facilities that are publicly-owned or controlled, [including public schools] are located within established communities and serve local needs... If a public facility is determined to be local serving, the project would not require a detailed CEQA transportation analysis.” Given that all the schools involved in the consolidation plan are public, this exemption from further analysis would apply.



Definition of VMT for Consolidation Plan.

VMT is defined as the number of trips associated with each school multiplied by the length of each trip. VMT is typically analyzed on a daily basis. The trips generated by each school include trips to and from the school by faculty and staff as well as students being dropped off and picked up. VMT is a measure of the burden placed on the transportation system to move vehicles and is also a measure of the greenhouse gas emissions attributable to motor vehicles.

Methodology

There are three data points needed to calculate VMT for this analysis: number of students, number of trips generated by each of the closing schools, and the average distance to school for students. Enrollment data was gathered for each of the schools in the district using data provided by the School District and the California Department of Education's Data Quest webpage. The data was gathered for every school year between 1997-1998 and 2024-25 (Table 1). The enrollment figures were used to calculate the estimated number of trips generated by the schools using the Institute of Transportation Engineers (ITE) Trip Generation Manual, which indicates that an elementary school generates an average of 2.27 trips per student per day (Table 3). The 2013-14 school year was the peak of district wide enrollment when including Charter Schools. With VMT being affected by the number of trips and distance of those trips, and with average distance to school remaining constant, it is assumed that the period of highest VMT is the point with the highest number of trips. For this reason the school year with the highest enrollment (2013-14) was chosen to be the baseline year that the post-consolidation VMT would be compared to. To determine the average distance to school, ten "control points" were distributed across each affected elementary school's boundary (Figure 1) to correspond with population based on the student population map provided in the District's draft consolidation plan from January 2025 (Figure 3). This same method of placing control points was then repeated for the affected middle schools (Figure 2). The shortest driving route between each of these control points and their corresponding elementary/middle school was measured (Table 5).

Next, the same control points were used to measure the distance from each control point to the new school they are assigned to under the consolidation plan to get a new average distance to school (Table 6). With schools being relocated from one school to multiple schools there is no way to determine which control points will connect with which new school. As a result, the distance from every control point was measured to each new school to get the average distance to the new school from all points in the original school's boundary. With this "post-consolidation" average distance to each school, the overall distance was calculated by multiplying the number of students being relocated to each school by the average distance from the control points to that new school. This total mileage by school was then divided by the total number of students being relocated from the original school to get the new per capita average miles to school (Table 6).

Analysis

Under the consolidation plan, the district-wide average distance to school would increase from the current distance of 0.94 miles to 1.01 miles under scenario 1, or 1.02 miles under scenario 2 (Table 4). At Los Arboles, the average distance would decrease slightly from 0.6 miles to 0.55 miles. At Ramblewood, the average distance decreased similarly from 1 mile to 0.92 miles. All other schools saw their average distance increase. McKinley would go from 0.47 miles to 1.81 miles under scenario 1, or 1.98 miles under scenario 2. Shirakawa would increase from an



average distance of 3.06 miles to 3.38 miles. Lairon would increase from 0.55 to 0.84 miles. In isolation this increase in distance may increase VMT, however, the large decrease in elementary school enrollment, compared to the baseline year of highest district wide enrollment, offsets the VMT increases at some schools.

At the schools set to transfer students, enrollment has declined from a peak-year enrollment of 2,791 students to 1,402 students in 2024-25, with 924 of those students being transferred (Table 2). The significant drop in total enrollment has resulted in fewer vehicle trips to and from school, leading to a district-wide 37.3% reduction in VMT under scenario 1 or a 36.5% reduction in VMT under scenario 2 when compared to the combined peak year of enrollment baseline (Table 4).

In Summary

The School Consolidation Plan results in an overall decrease in vehicle miles traveled (VMT). While there is expected to be a decrease in VMT by students from Los Arboles, Ramblewood, Shirakawa, and Lairon, for students from McKinley the VMT is expected to increase. This increase from one school however is counterbalanced by the very large decrease in VMT at the other schools affected by the consolidation plan due to broader district-wide elementary school enrollment declines. The significant reduction in total student enrollment over the past 25 years has resulted in a net district-wide decrease in VMT of 37.3% under scenario 1 or 36.5% under scenario 2 compared to the year of highest enrollment baseline.

We appreciate the opportunity to provide this analysis. If you have any questions, please do not hesitate to call.

Sincerely,

HEXAGON TRANSPORTATION CONSULTANTS, INC.

A handwritten signature in black ink, appearing to read "Gary K. Black".

Gary K. Black
President

A handwritten signature in black ink, appearing to read "Ethan Heckman".

Ethan Heckman
Planner

Table 1
Enrollment Data From 1997-2024



School	Enrollment Last 25+ Years					District	District Excluding Charter Schools ³
	Los Arboles	McKinley	Ramblewood ²	Shirakawa ²	Lairon		
1997-98	777	701	n/a	n/a	779	10,709	10,709
1998-99	809	725	n/a	n/a	784	10,696	10,696
1999-00	748	708	n/a	642	743	10,681	10,681
2000-01	722	667	n/a	749	701	10,497	10,497
2001-02	690	604	n/a	733	656	10,013	10,013
2002-03	678	575	n/a	764	684	9,953	9,953
2003-04	672	552	n/a	776	685	9,867	9,867
2004-05	684	553	n/a	785	664	9,837	10,137
2005-06	601	480	333	811	611	9,659	9,659
2006-07	575	474	409	823	616	9,781	9,781
2007-08	572	516	407	876	628	9,957	9,083
2008-09	513	552	390	852	619	10,044	9,198
2009-10	482	532	399	908	576	10,202	9,998
2010-11	486	553	422	865	578	10,274	9,902
2011-12	480	520	422	894	601	10,622	9,673
2012-13	490	457	428	891	544	10,703	9,456
2013-14 ¹	519	454	445	906	467	11,269	9,246
2014-15	489	434	413	871	516	11,193	8,796
2015-16	479	388	390	873	448	11,114	8,398
2016-17	399	348	368	814	402	10,735	7,832
2017-18	370	315	371	799	359	10,596	7,468
2018-19	353	286	351	759	383	10,275	7,102
2019-20	310	272	346	703	330	9,775	6,648
2020-21	247	236	312	664	338	9,980	6,361
2021-22	225	230	275	793	300	8,402	5,978
2022-23	188	236	259	633	315	8,107	5,743
2023-24	184	233	255	519	305	7,892	5,549
2024-25	198	228	225	504	247	5,599	5,410

¹ Highlighted is year of highest district enrollment *including* charter schools

² Ramblewood opened 2005-06, Shirakawa opened 1999-00

³ District Excluding Charter Schools only includes students from Bridges, Dahl, Franklin, Hellyer, Meadows, Lairon, Los Arboles, McKinley, Ramblewood, Kennedy, Santee, Shirakawa, and Windmill Springs.

Table 2
Number of Students Relocating to Each School Under Consolidation Plan



School Changes								
<i>Scenario 1</i>								
Pre-Consolidation								
School	# of Students Relocating							Total Enrollment
	Lairon	Santee	Hellyer	Kennedy	Bridges	Shirakawa	Sylvandale	
Los Arboles	198							198
McKinley		180				48		228
Ramblewood			225					225
Shirakawa					70		81	504
Lairon							122	247
Additional Students	198	180	225	0	70	48	203	1402
<i>Scenario 2</i>								
Pre-Consolidation								
School	# of Students Relocating							Total Enrollment
	Lairon	Santee	Hellyer	Kennedy	Bridges	Shirakawa	Sylvandale	
Los Arboles	198							198
McKinley				180		48		228
Ramblewood			225					225
Shirakawa					70		81	504
Lairon							122	247
Additional Students	198	0	225	180	70	48	203	1402

Table 3
Highest Enrollment and ITE Trips Generated

	Change in Enrollment ¹		ITE Trips Gen.	
	Year of Highest District Enrollment ²	Time of Consolidation	Year of Highest District Enrollment ²	Time of Consolidation
Los Arboles	519	198	1,178	450
McKinley	454	228	1,031	518
Ramblewood	445	225	1,010	511
Shirakawa	906	504	2,057	1,144
Lairon	467	247	1,060	561
District	9,246	5,410	20,988	12,281
1. All enrollment numbers gathered from District provided data and California Department of Education's Data Quest database				
2. Year of highest district enrollment 2013-14				

Table 4
VMT Calculations



District Wide Change in VMT		
<i>Scenario 1</i>		
	Year of Highest Enrollment	Post Consolidation (2025-26)
# of Students	9,246	5,410
ITE Trips	20,988	12,281
Avg. Distance (Mi)	0.94	1.01
VMT	19,730	12,368
% Change in VMT:		-37.3%
<i>Scenario 2</i>		
	Year of Highest Enrollment	Post Consolidation (2025-26)
# of Students	9,246	5,410
ITE Trips	20,988	12,281
Avg. Distance (Mi)	0.94	1.02
VMT	19,730	12,526
% Change in VMT:		-36.5%

Table 5
Current Distance to School From Control Points



Current Distance to School													
School	Distance to Control Point (Miles)										Average Distance	Number of Students 2025-26	Weighted Mileage
	1	2	3	4	5	6	7	8	9	10			
Los Arboles	0.85	0.8	0.5	0.5	0.3	0.4	0.4	0.85	0.8	0.6	0.60	198	118.8
McKinley	0.8	0.3	0.65	0.4	0.4	0.8	0.3	0.2	0.6	0.2	0.47	228	106.0
Ramblewood	1.2	1.1	1.8	1.3	0.6	1.1	0.8	1	0.3	0.8	1.00	225	225.0
Shirakawa	3.8	4.4	5	2.1	2.2	0.9	5.1	4	2.3	0.8	3.06	504	1542.2
Lairon	0.4	1.1	0.9	0.7	0.3	0.4	0.4	0.6	0.5	0.2	0.55	247	135.9
Santee	1.3	0.9	0.9	1	0.8	0.5	0.6	0.5	0.4	0.2	0.71	314	222.9
Kennedy	0.6	0.7	0.4	0.2	0.8	0.5	0.3	0.3	0.5	0.8	0.51	292	148.9
Hellyer	0.1	0.5	1.1	0.8	1	0.8	0.9	1.3	1.2	1.5	0.92	374	344.1
Franklin	1.3	1.7	1.2	1.5	1.6	0.8	1	0.3	0.7	1.1	1.12	523	585.8
Stonegate	0.7	0.5	0.5	0.9	1.4	0.2	0.4	0.4	0.2	0.2	0.54	501	270.5
Windmill Springs	0.9	0.9	0.7	0.6	0.2	0.3	0.4	0.4	0.2	0.5	0.51	626	319.3
Dahl	1	0.5	0.3	0.3	0.4	0.4	0.4	0.6	0.8	1	0.57	408	232.6
Meadows	0.7	0.6	0.5	0.4	0.1	0.6	0.3	0.4	0.6	0.8	0.50	403	201.5
Bridges	1.5	2.7	2.1	0.8	1	0.9	0.1	0.7	0.5	0.9	1.12	272	304.6
Sylvandale	2.5	1.5	1.2	1.1	0.9	0.2	0.7	1	0.9	1.1	1.11	295	327.5
District											0.87	5410	5085.6
Weighted Average Distance													0.94

Table 6

Future Distance to School From Control Points

Future Distance to School														
School	Distance to Control Point (Miles)										Average Distance	Number of Students 2025-26	Weighted Mileage (Scenario 1)	Weighted Mileage (Scenario 2)
	1	2	3	4	5	6	7	8	9	10				
Transferred Los Arboles Students														
Lairon	0.4	1.1	0.9	0.7	0.3	0.4	0.4	0.6	0.5	0.2	0.55	198	108.9	108.9
Transferred McKinley Students														
Santee (Scenario 1)	1.8	1.4	1.3	1.4	1.4	1.6	1.5	1.2	1.5	1.3	1.44	180	259.2	298.8
Kennedy (Scenario 2)	2	1.5	2	1.5	1.5	2	1.6	1.3	1.8	1.4	1.66	180		
Shirakawa	3.5	3.1	3.5	3.1	3	3.4	3.2	2.9	3.3	3	3.20	48	153.6	153.6
Transferred Ramblewood Students														
Hellyer	0.1	0.5	1.1	0.8	1	0.8	0.9	1.3	1.2	1.5	0.92	225	207.0	207.0
Transferred Shirakawa Students														
Bridges	4.9	5.5	6.2	3.2	3.2	2.2	5.6	5	3.3	2.4	4.15	70	290.5	290.5
Sylvandale	1.8	2.4	3.2	3.5	2.5	3	3.2	2	2.6	3	2.72	81	220.3	220.3
Transferred Lairon Students														
Sylvandale	1.1	0.7	0.8	0.4	0.7	0.6	0.8	1.3	1.1	0.9	0.84	122	102.5	102.5
Other Schools														
Shirakawa	3.8	4.4	5	2.1	2.2	0.9	5.1	4	2.3	0.8	3.06	353	1080.2	1080.2
Lairon	0.4	1.1	0.9	0.7	0.3	0.4	0.4	0.6	0.5	0.2	0.55	125	68.8	68.8
Santee	1.3	0.9	0.9	1	0.8	0.5	0.6	0.5	0.4	0.2	0.71	314	222.9	222.9
Kennedy	0.6	0.7	0.4	0.2	0.8	0.5	0.3	0.3	0.5	0.8	0.51	292	148.9	148.9
Hellyer	0.1	0.5	1.1	0.8	1	0.8	0.9	1.3	1.2	1.5	0.92	374	344.1	344.1
Franklin	1.3	1.7	1.2	1.5	1.6	0.8	1	0.3	0.7	1.1	1.12	523	585.8	585.8
Stonegate	0.7	0.5	0.5	0.9	1.4	0.2	0.4	0.4	0.2	0.2	0.54	501	270.5	270.5
Windmill Springs	0.9	0.9	0.7	0.6	0.2	0.3	0.4	0.4	0.2	0.5	0.51	626	319.3	319.3
Dahl	1	0.5	0.3	0.3	0.4	0.4	0.4	0.6	0.8	1	0.57	408	232.6	232.6
Meadows	0.7	0.6	0.5	0.4	0.1	0.6	0.3	0.4	0.6	0.8	0.5	403	201.5	201.5
Bridges	1.5	2.7	2.1	0.8	1	0.9	0.1	0.7	0.5	0.9	1.12	272	304.6	304.6
Sylvandale	2.5	1.5	1.2	1.1	0.9	0.2	0.7	1	0.9	1.1	1.11	295	327.5	327.5
								District		0.76	5410	5448.6	5488.2	
								Weighted Average Distance				1.007	1.014	

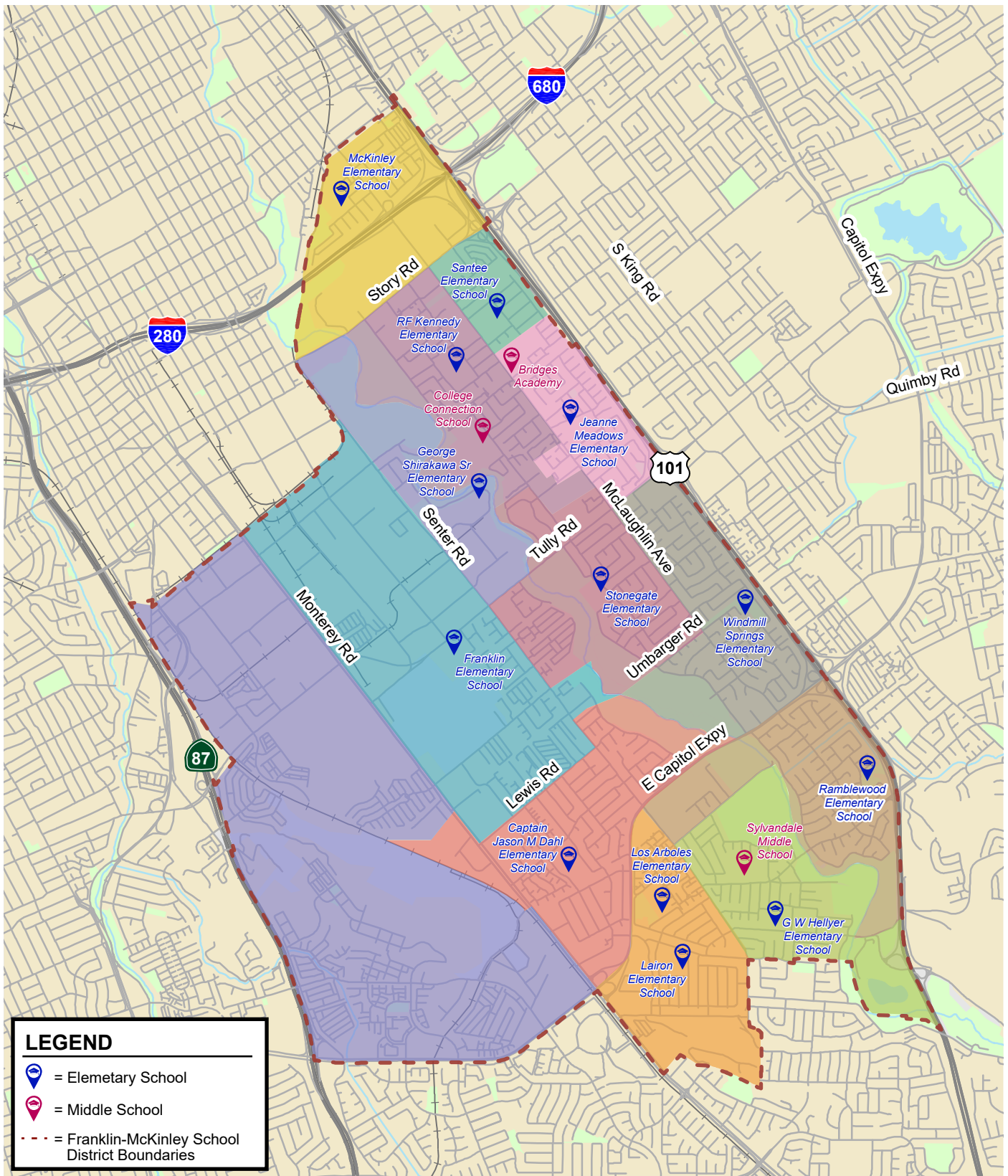


Figure 1
Existing Elementary School Boundaries

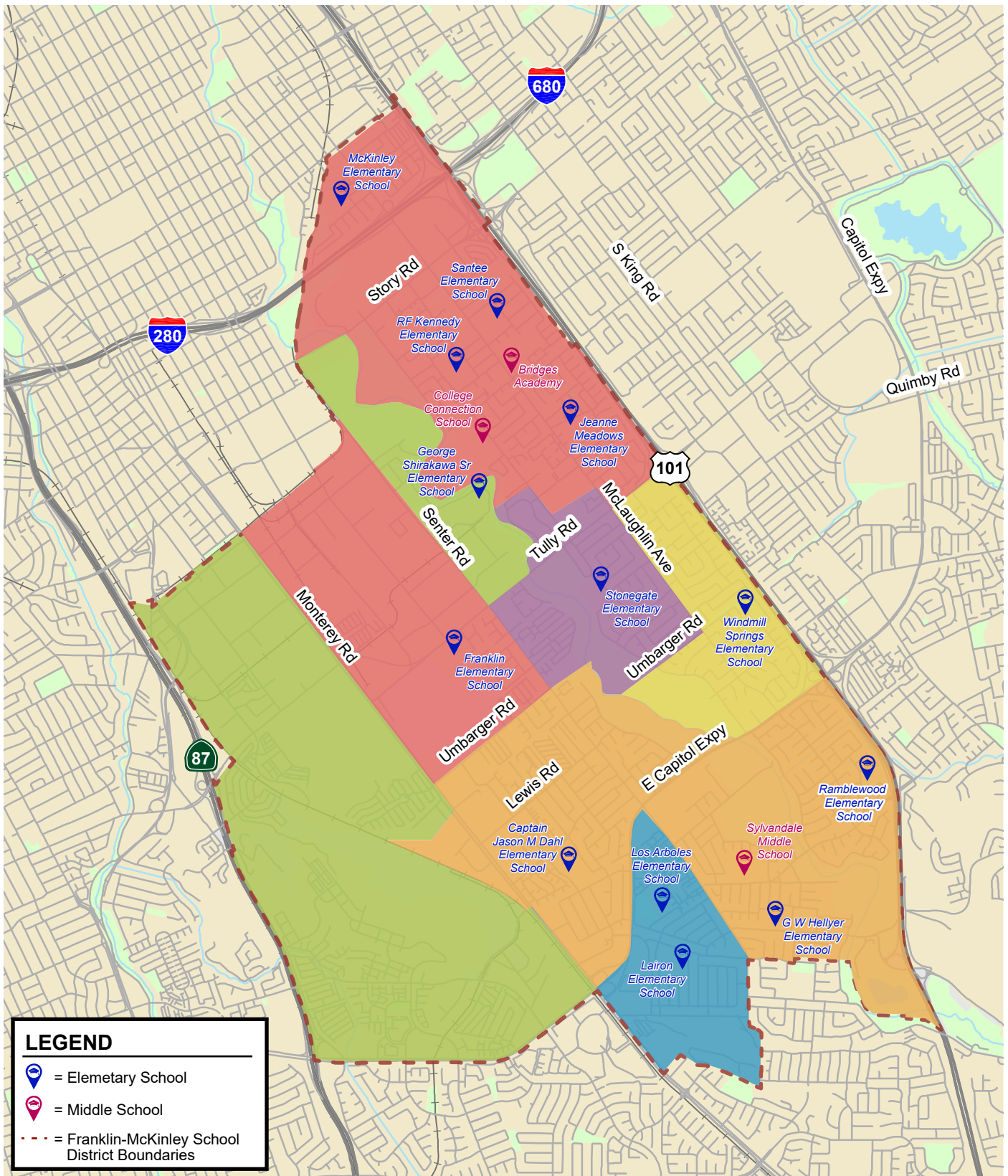


Figure 2
Existing Middle School Boundaries

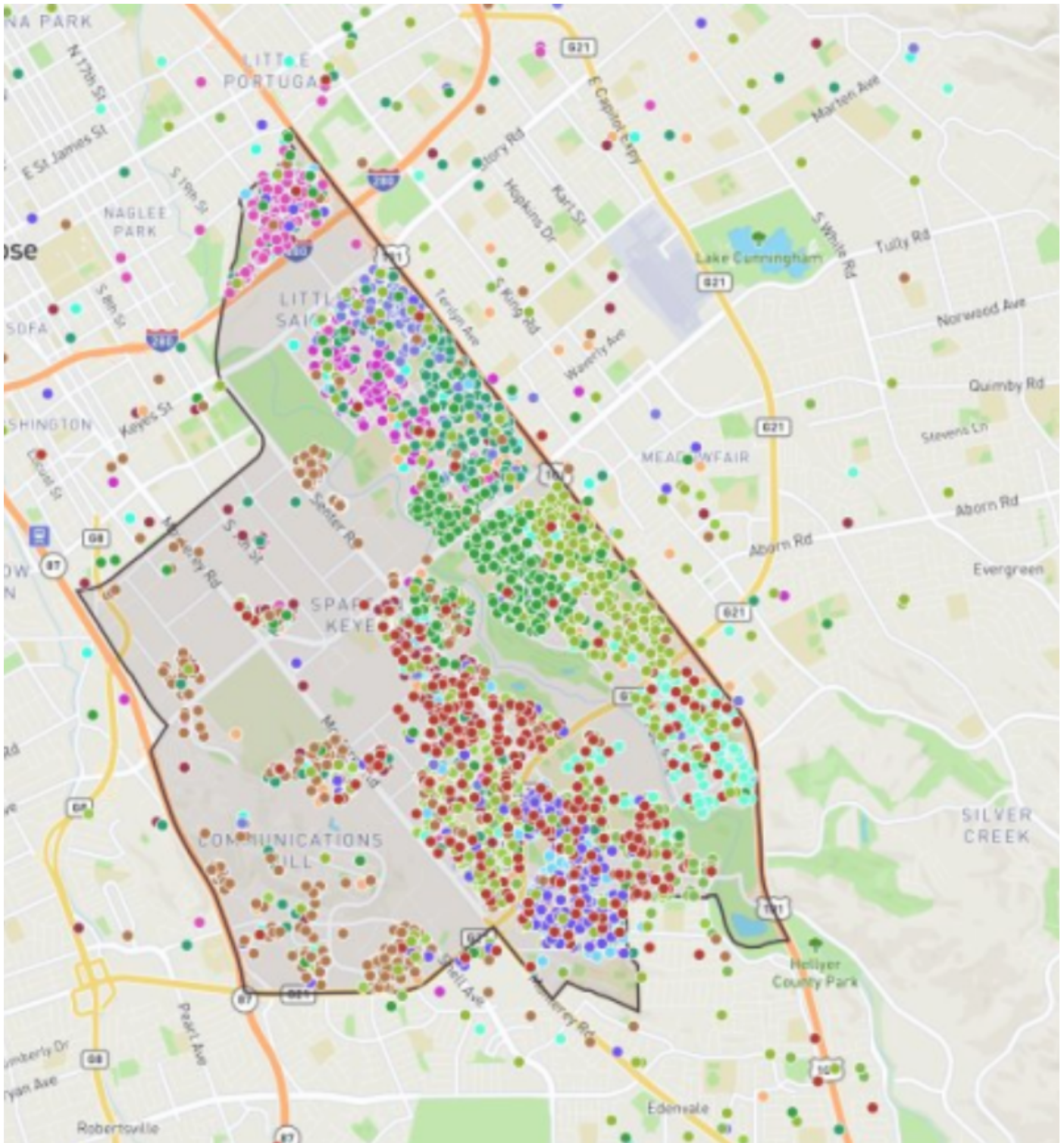


Figure 3
Student Population Map from January 2025 Draft Consolidation Report

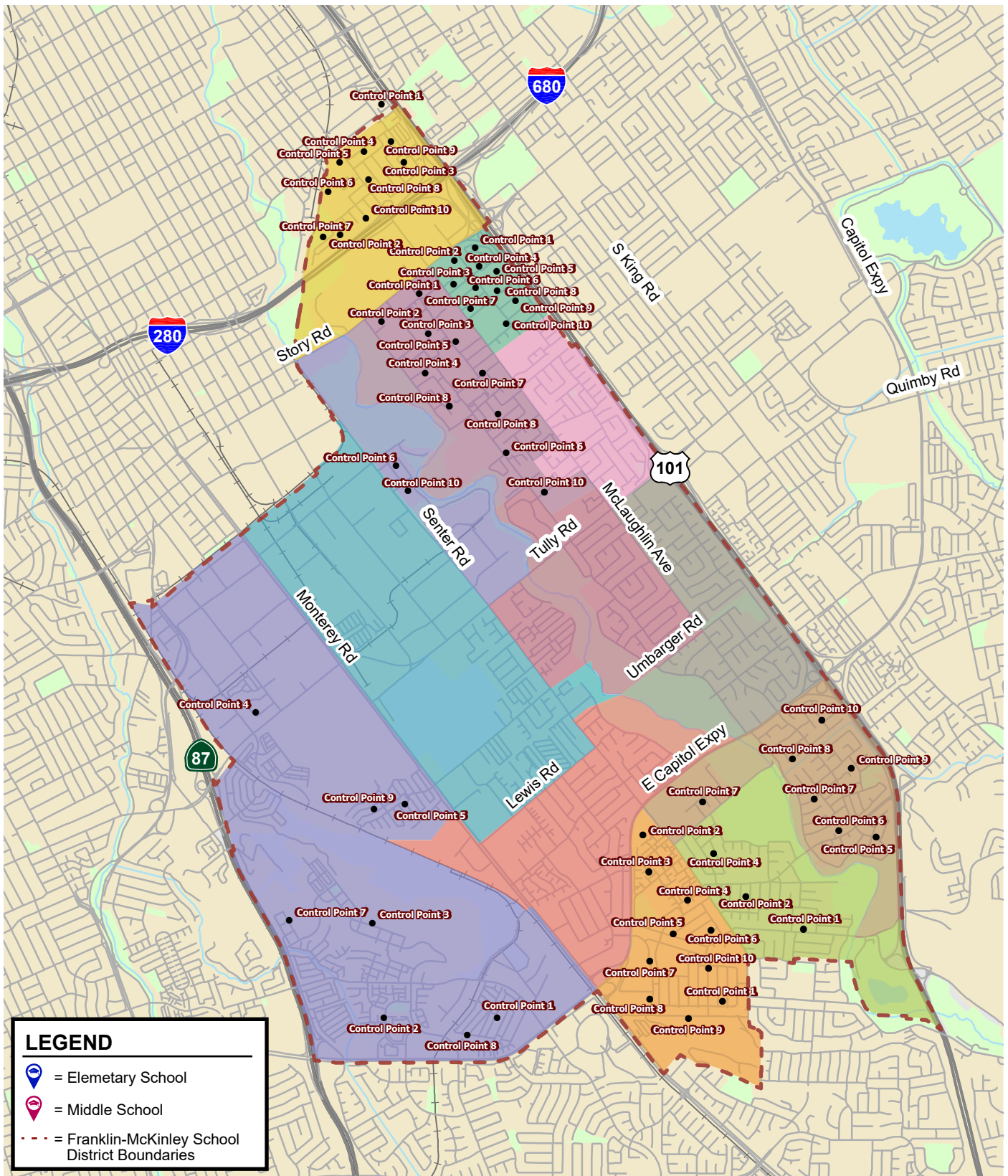


Figure 4
Elementary School Control Points

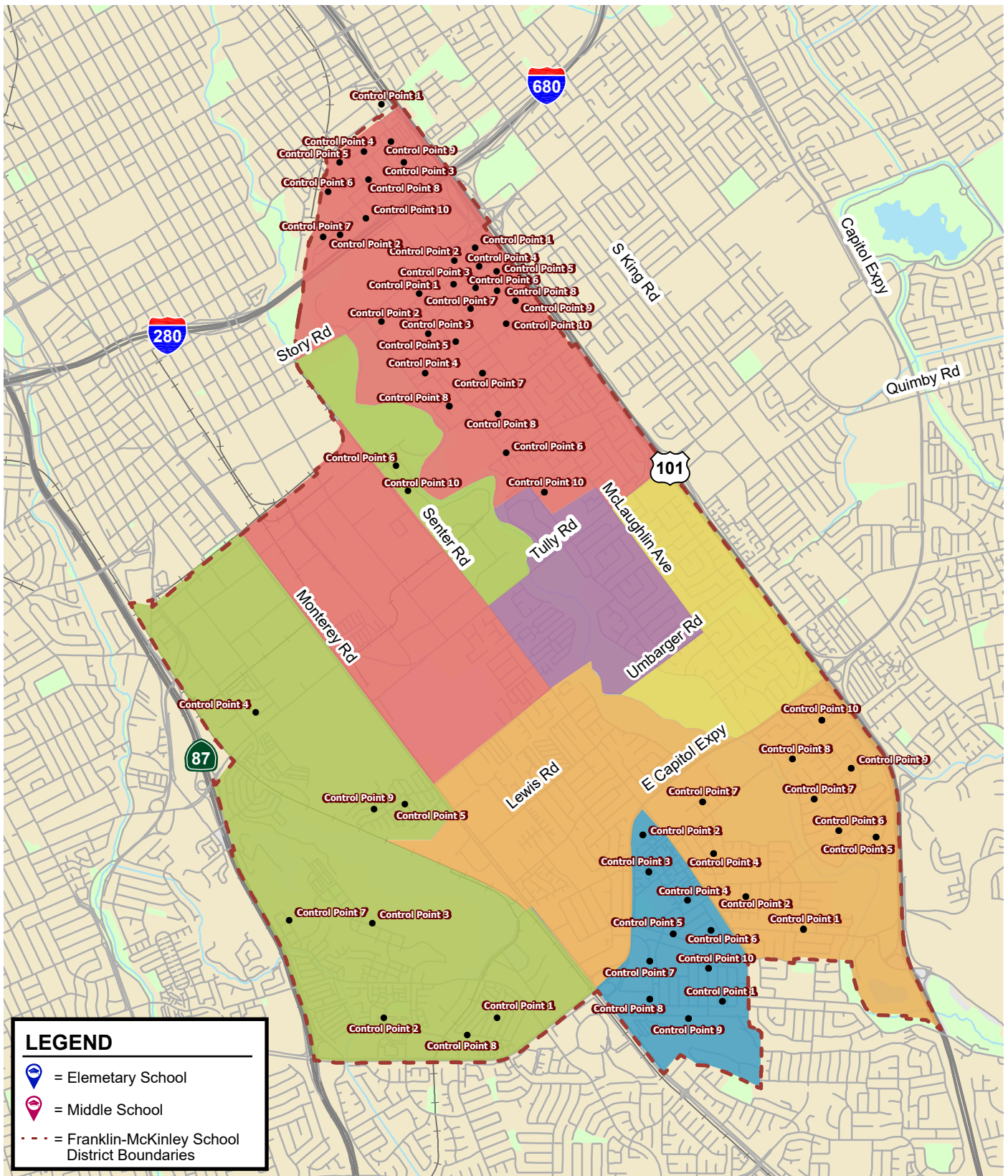


Figure 5
Middle School Control Points