



**SANTA CLARA COUNTY CLERK  
CEQA FILING COVER SHEET**

Santa Clara County - Clerk-Recorder Office  
State of California

**File Number: ENV25474**

ENVIRONMENTAL FILING

No. of Pages: 65

Total Fees: \$50.00

File Date: 02/19/2025

Expires: 03/26/2025

**REGINA ALCOMENDRAS, Clerk-Recorder**

By: Fraulein Dominguez, Deputy Clerk-Recorder

THIS SPACE FOR CLERK'S USE ONLY

Complete and attach this form to each CEQA Notice filed with the County Clerk

**TYPE OR PRINT CLEARLY**

**Check Document being Filed:**

- ☐ Environmental Impact Report (EIR)
- ☐ Filing Fee (new project)
- ☐ Previously Paid F&W (must attach F&W receipt and project titles must match)
- ☐ No Effect Determination (F&W letter must be attached)
- ☐ Mitigated Negative Declaration (MND) or Negative Declaration (ND)
- ☐ Filing Fee (new project)
- ☐ Previously Paid F&W (must attach F&W receipt and project titles must match)
- ☐ No Effect Determination (F&W letter must be attached)
- ☒ Notice of Exemption (NOE)
- ☐ Other (Please fill in type):

1. LEAD AGENCY: Berryessa Union School District
2. LEAD AGENCY EMAIL: kfranklin@busd.net
3. PROJECT TITLE: Berryessa Union School District Elementary School Closure and Consolidation and Attendance Boundary Changes
4. APPLICANT NAME: Kevin T Franklin, Assistant Superintendent, Berryessa Union School District PHONE: 408-923-1860
5. APPLICANT EMAIL: kfranklin@busd.net
6. APPLICANT ADDRESS: 981 Ridder Park Drive, San Jose, CA 95131
7. PROJECT APPLICANT IS A: ☐ Local Public Agency ☒ School District ☐ Other Special District ☐ State Agency ☐ Private Entity
8. NOTICE TO BE POSTED FOR 35 DAYS.

Filing fees are due at the time a Notice of Determination/Exemption is filed with our office. For more information on filing fees and No Effect Determinations, please refer to California Code of Regulations, Title 14, section 753.5.

## Notice of Exemption

---

**To:** ☒ Office of Planning and Research  
P.O. Box 3044, 1400 Tenth Street, Room 212  
Sacramento, CA 95812-3044

☒ Clerk-Recorder  
County of Santa Clara  
110 West Tasman Drive, 1<sup>st</sup> Floor  
San Jose, CA 95134

**From:** (Public Agency)  
Berryessa Union School District  
981 Ridder Park Drive  
San Jose, CA 95131

**Project Title:** Berryessa Union School District Elementary School Closure and Consolidation and Attendance Boundary Changes

**Project Applicant:** Berryessa Union School District

**Project Location – Specific:** Several School Facilities throughout San Jose

**Project Location – City:** San Jose

**Project Location – County:** Santa Clara

**Description of Nature, Purpose and Beneficiaries of the Project:**

The Berryessa Union School District in San Jose approved the closure of Cherrywood, Laneview, and Toyon Elementary Schools (Resolution No. 24-08, December 2024) due to a prolonged enrollment decline of approximately 30.5 percent (1,765 students) since the 1999-00 school year. The closures will consolidate operations into seven receiving schools: Brooktree, Majestic Way, Noble, Northwood, Ruskin, Summerdale, and Vinci Park Elementary Schools. The consolidation plan includes boundary adjustments for all receiving schools, except Vinci Park Elementary School, to align with enrollment needs, ensuring balanced student distribution among the receiving schools.

Enrollment across the receiving schools has shifted significantly, with most schools experiencing declines between 8 percent and 52 percent. Historical peak enrollment data indicate that the majority of receiving schools have previously supported enrollment levels higher than the projected figures, with only minor exceptions at Northwood and Ruskin Elementary Schools, where projections slightly exceed historical peaks. Despite these slight differences, all receiving schools have sufficient operational capacity to accommodate the projected 2025-26 student enrollment.

The consolidation also involves the relocation of several academic programs, such as Mandarin Immersion, Special Day Classes (SDC), and Santa Clara County Office of Education Special Education programs. These relocations have been carefully planned to match the operational capacity of the receiving schools without the need for new classroom facilities. However, if specific classes or electives require additional space, portable classrooms may be installed at Majestic Way, Northwood, and Ruskin Elementary Schools. These additions would remain within regulatory limits, with increases not exceeding 25 percent of the original capacity or 10 portable classrooms at any individual campus or District-wide.

Finally, the proposed project may require the removal of non-native trees at Ruskin Elementary if portable classrooms are added, with replacement trees to be planted as mitigation.

**Name of Public Agency Approving Project:** Berryessa Union School District

**Name of Person or Agency Carrying Out Project:** Berryessa Union School District

**Exempt Status:**

- ☒ Statutory Exemption. Closing of Any Public School (Article 18, Section 15282[i])
- ☒ Categorical Exemption. Existing Facilities (Article 19, Section 15301)
- ☒ Categorical Exemption. New Construction (Article 19, Section 15303)
- ☒ Categorical Exemption. Accessory Structures (Article 19, Section 15311)
- ☒ Categorical Exemption. Minor Additions to Schools (Article 19, Section 15314)

- ☒ Categorical Exemption. Educational or Training Programs Involving No Physical Changes (Article 19, Section 15322)

**Reasons why project is exempt:**

See attachment: Berryessa Union School District School Closure and Consolidation CEQA Exemption Findings.

**Lead Agency**

**Contact Person:** Kevin T. Franklin  
Assistant Superintendent

**Area Code/Telephone/Extension:** (408) 923-1860

**If filed by applicant:**

1. Attach certified document of exemption finding.
2. Has a Notice of Exemption been filed by the public agency approving the project? ☐ Yes ☐ No

Signature: *Teri Wissler Adams* Date: *2/18/25* Title: Consultant to the Berryessa  
*EMC Planning Group* Union School District

☒ Signed by Lead Agency (Consultant)

Date received for filing at OPR: \_\_\_\_\_

☐ Signed by Applicant

Revised 2011

**CEQA Exemption Findings**

# **Elementary School Closure and Consolidation and Attendance Boundary Changes**

**Berryessa Union School District**

**February 10, 2025**

**Prepared by  
EMC Planning Group**





**CEQA EXEMPTION FINDINGS**

**ELEMENTARY SCHOOL CLOSURE AND  
CONSOLIDATION AND ATTENDANCE  
BOUNDARY CHANGES**

**BERRYESSA UNION SCHOOL DISTRICT**

**PREPARED FOR**

**Berryessa Union School District**

Kevin T. Franklin, Assistant Superintendent

981 Ridder Park Drive

San Jose, CA 95131

Tel 408.923.1860

rfuentes@busd.net

**PREPARED BY**

**EMC Planning Group Inc.**

601 Abrego Street

Monterey, CA 93940

Tel 831.649.1799

Fax 831.649.8399

[www.emcplanning.com](http://www.emcplanning.com)

February 10, 2025

This document was produced on recycled paper.





# Table of Contents

Berryessa Union School District Elementary School Closure and Consolidation and Attendance Boundary Changes Description and Evidence for Statutory and Categorical Exemptions .....	1
Project Description .....	1
Environmental Setting at Receiving Elementary Schools .....	5
Statutory Exemption .....	6
Categorical Exemptions.....	7
Environmental Analysis.....	12
Exceptions to Categorical Exemptions .....	17
Evidence And Findings .....	19
Sources .....	21

## Appendices

Appendix A	Berryessa Union School District Resolution No. 24-08 Approving School Consolidation
Appendix B	Existing and Proposed Berryessa Union School District School Attendance Boundary Maps
Appendix C	School Boundary Information, Wednesday, February 12, 2025 Presentation
Appendix D	Hexagon Transportation Consultants VMT Study for Berryessa Union School District

## Tables

Table 1	Comparison of Peak Enrollment, Projected Enrollment and Capacity of Receiving Schools .....	3
Table 2	Proposed Relocation of Academic Programs Among Receiving Schools .....	4



# Berryessa Union School District Elementary School Closure and Consolidation and Attendance Boundary Changes

## Description and Evidence for Statutory and Categorical Exemptions

### Project Description

#### School Closure and Consolidation

The Berryessa Union School District, located in San Jose, approved the closure of Cherrywood Elementary (2550 Greengate Drive), Laneview Elementary School (2095 Warmwood Lane), and Toyon Elementary School (995 Bard Street), and the consolidation of operations among seven existing schools, including Brooktree Elementary School (1781 Olivetree Drive); Majestic Way Elementary School (1855 Majestic Way); Noble Elementary School (3466 Grossmont Drive); Northwood Elementary School (2760 Trimble Road); Ruskin Elementary School (1401 Turlock Lane); Summerdale Elementary School (1100 Summerdale Drive); and Vinci Park Elementary School (1311 Vinci Park Way) (Resolution No. 24-08, December 2024, included as [Appendix A](#)). This decision was prompted by a prolonged decline in enrollment, with total district enrollment decreasing by approximately 30.5 percent (1,765 students) between the 1999-00 and 2023-24 academic years.

Between the school years 1999-00 and 2023-24, enrollment in District elementary schools declined as follows:

- Brooktree Elementary: 605 to 379 students (37.3 percent decline);
- Cherrywood Elementary: 570 to 524 (8.07 percent decline);
- Laneview Elementary: 594 to 369 (37.88 percent decline); and
- Majestic Way Elementary: 556 to 442 students (20.5 percent decline);
- Noble Elementary: 562 to 365 students (35.0 percent decline);
- Northwood Elementary: 417 to 454 students (8.8 percent increase);
- Ruskin Elementary: 640 to 399 students (37.6 percent decline);
- Summerdale Elementary: 530 to 274 students (48.3 percent decline);
- Toyon Elementary: 539 to 258 (52.1 percent decline); and
- Vinci Park Elementary: 777 to 561 students (27.8 percent decline).

Given these trends, the District determined that consolidation was necessary to optimize resources and maintain operational efficiency.

## **School Attendance Boundary Adjustments**

To align school attendance boundaries with enrollment needs and ensure a balanced student distribution, the following boundary adjustments are proposed. [Appendix B](#) presents both existing and proposed attendance boundary maps.

### ***Cherrywood Elementary Consolidation and Boundary Adjustments***

The portions of Cherrywood Elementary's existing attendance boundary that are (1) north of the center of Hostetter Road and (2) west of the center of Capitol Avenue and north of the center of Sierra Road, including the missing part of Sierra Road, will be reassigned to Brooktree Elementary, making it the primary school for regular education students in that area.

The portion of Cherrywood Elementary's existing attendance boundary that is east of the center of Capitol Avenue, between the centers of Hostetter Road and Sierra Road, will be reassigned to Ruskin Elementary, where regular education students will have Ruskin Elementary as their primary school.

The portion of Cherrywood Elementary's existing attendance boundary that is south of the center of Sierra Road, including the missing part of Sierra Road (with all of Old Abbey Place included), will be reassigned to Summerdale Elementary, making it the primary school for regular education students in that area. Mandarin Immersion students will be assigned to Ruskin Elementary, and special education students currently attending Cherrywood Elementary will be reassigned to Vinci Park Elementary.

### ***Laneview Elementary Consolidation and Attendance Boundary Adjustments***

The portion of Laneview Elementary's existing attendance boundary that is west of the center of Morrill Avenue will be reassigned to Northwood Elementary, making it the primary school for regular education students in that area. The portion east of the center of Morrill Avenue will be reassigned to Majestic Way Elementary, making it the primary school for regular education students. Special education students currently attending Laneview Elementary will be assigned to Northwood Elementary.

### ***Toyon Elementary Consolidation and Attendance Boundary Adjustments***

The portion of Toyon Elementary's existing attendance boundary that is east of the center of White Road will be reassigned to Noble Elementary, making it the primary school for regular education students in that area. The portion west of the center of White Road will be reassigned to Summerdale Elementary, where regular education students will have Summerdale Elementary as their primary school.

## **Enrollment and Operational Capacity of Receiving Schools**

[Table 1, Comparison of Peak Enrollment, Projected Enrollment, and Capacity of Receiving Schools](#), summarizes the capacity of receiving schools to accommodate students following the closure of

Cherrywood, Laneview, and Toyon Elementary Schools. Historical peak enrollment data indicate that all receiving schools, with the exception of Northwood Elementary (projected to exceed peak enrollment by three students) and Ruskin Elementary (projected to exceed peak enrollment by two students), have previously supported enrollment levels exceeding the 2025-26 projected enrollment. Despite these slight differences for Northwood Elementary and Ruskin Elementary, all receiving schools maintain sufficient operational capacity to accommodate the projected student population, ensuring the consolidation can be implemented without exceeding available resources.

**Table 1 Comparison of Peak Enrollment, Projected Enrollment and Capacity of Receiving Schools**

School	Year / Peak Student Enrollment	2025-26 Projected Enrollment	Operational Capacity	Excess Capacity
Brooktree Elementary	1997-98 / 655	446	550	104
Majestic Way Elementary	1997-98 / 608	568	588	20
Noble Elementary	1995-96 / 639	495	558	63
Northwood Elementary	2019-20 / 584	587	670	83
Ruskin Elementary	1996-97 / 689	691	706	15
Summerdale Elementary	1995-96 / 605	462	614	152
Vinci Park Elementary	1996-97 / 814	513	744	231

SOURCES: Berryessa School District School Consolidation Advisory Committee Report to the Board of Trustees, November 4, 2024; School Boundary Additional Information Presentation, February 12, 2025.

## Proposed Academic Program Relocations

The closure of Cherrywood, Laneview, and Toyon Elementary Schools necessitates the relocation of the Mandarin Immersion, Special Day Class (SDC) Preschool, SDC Autism, SDC Mild/Moderate, and Santa Clara County Office of Education Special Education programs. Relocations are determined based on the operational capacity of the seven receiving schools. [Table 2, Proposed Relocation of Academic Programs Among Receiving Schools](#), summarizes the District's assessment of program relocations and any additional classroom needs at the receiving schools.

## Potential Physical Changes at Receiving Schools

The District does not anticipate the need for additional classroom facilities at any of the receiving schools to accommodate the increase in students. However, if enrollment in specific electives or classes necessitates additional space, the District may install portable classrooms, as discussed below.



**Table 2 Proposed Relocation of Academic Programs Among Receiving Schools**

Program	Number of Classrooms	Current Location	2025-26 Proposed Location / Classrooms
Mandarin Immersion	12	Cherrywood	Ruskin (12)
SDC Preschool	6	Toyon	Brooktree (1) Majestic Way (1) Noble (1) Summerdale (1) Vinci Park (2)
SDC - Autism	3	Laneview	Northwood (3)
SDC - Autism	1	Toyon	Summerdale (1)
SDC- Mild/Moderate	2	Cherrywood & Ruskin	Vinci Park (2)
Santa Clara County Office of Education Special Education Programs	2	Toyon	Summerdale (2)

SOURCES: Berryessa School District School Boundary Additional Information Presentation, February 12, 2025.

NOTE: SDC stands for "Special Day Class."

Brooktree, Noble, Summerdale, and Vinci Park Elementary Schools can accommodate the projected 2025-26 enrollment without the need for portable classrooms, and no physical changes are anticipated at these campuses as part of the consolidation. However, Majestic Way, Northwood, and Ruskin Elementary Schools may require the addition of portable classrooms as discussed above. Specifically:

- Majestic Way Elementary may require two portable classrooms ([Appendix C](#), page 12);
- Northwood Elementary may require three portable classrooms ([Appendix C](#), page 14); and
- Ruskin Elementary may require three portable classrooms ([Appendix C](#), page 15).

If the installation of portable classrooms becomes necessary at any or all Majestic Way, Northwood, and/or Ruskin Elementary School campuses, the total increase District-wide would not exceed 25 percent of the original capacity or involve more than 10 portable classrooms. Additionally, at each of these campuses individually, the total increase would also not exceed 25 percent of the original campus capacity or include more than 10 portable classrooms. Based on operational capacities:

- Majestic Way Elementary School: 25 percent of 588 students = 147 students;
- Northwood Elementary: 25 percent of 670 students = 168 students; and
- Ruskin Elementary School: 25 percent of 706 students = 177 students.

Therefore, the increase associated with the proposed consolidation would remain within these limits.

Additionally, based on preliminary project plans, removal of non-native trees may be required at Ruskin Elementary School if portables are added, and replacement trees would be planted.

## **Environmental Setting at Receiving Elementary Schools**

### **Brooktree Elementary School**

Brooktree Elementary School, located at 1781 Olivetree Drive, is situated within a developed residential area. The school is surrounded by residential neighborhoods to the north, east, and west, while Brooktree Park borders the site to the south and southwest.

### **Majestic Way Elementary School**

Majestic Way Elementary School, located at 1855 Majestic Way, is situated within a developed residential area. The school is surrounded by residential neighborhoods to the north, south, and east, while Berryessa Creek Park borders the site to the southwest and south. Additionally, the school is adjacent to Berryessa Creek.

### **Noble Elementary School**

Noble Elementary School, located at 3466 Grossmont Drive, is situated within a developed residential area. The school is surrounded by residential neighborhoods to the north and east, while Noble Park borders the site to the west. To the south, the school is bordered by the American Legion Northside Post 858 and Noble Avenue.

### **Northwood Elementary School**

Northwood Elementary School, located at 2760 Trimble Road, is situated within a developed residential area. The school is surrounded by residential neighborhoods to the north, east, southeast, and west, while Selwyn Park and Northwood Park Playground border the site to the south. Additionally, Interstate 680 is located approximately 0.13 miles east of the school.

### **Ruskin Elementary School**

Ruskin Elementary School, located at 1401 Turlock Lane, is situated within a developed residential area. The school is surrounded by residential neighborhoods to the north, south, east, and west. A drainage channel is located west of the school's grass-covered recreation area. Additionally, the Sunshine School Daycare Center is located southeast of the school.

### **Summerdale Elementary School**

Summerdale Elementary School, located at 1100 Summerdale Drive, is situated within a developed residential area. The school is surrounded by residential neighborhoods to the northwest, south, and west, and Penitencia Creek Park to the northeast and east.

### **Vinci Park Elementary School**

Vinci Park Elementary School, located at 1311 Vinci Park Way, is situated within a developed residential area. The school is surrounded by residential neighborhoods to the northwest, east, and

south, while Vinci Park borders the site to the northeast. Additionally, Interstate 680 is located approximately 0.58 miles northeast of the school.

## Statutory Exemption

The proposed project qualifies for a statutory exemption under Article 18, Section 15282(i).

### Section 51282(i) Closing Any Public School or Transfer of Students

The closing of any public school or the transfer of students from that public school to another school in which kindergarten or any grades 1 through 12 is maintained as set forth in 21080.18 of the Public Resources Code.

PRC 21080.18 states:

Application of Division to Closing of Public School Maintaining Kindergarten or Any of Grades 1 Through 12. This division does not apply to the closing of any public school in which kindergarten or any of grades 1 through 12 is maintained or the transfer of students from that public school to another school if the only physical changes involved are categorically exempt under Chapter 3 (commencing with Section 15000) of Division 6 of Title 14 of the California Administrative Code.

**Discussion.** The proposed project qualifies for this exemption as it involves the closure of Cherrywood, Laneview, and Toyon Elementary Schools and the consolidation of operations into Brooktree, Majestic Way, Noble, Northwood, Ruskin, Summerdale, and Vinci Park Elementary Schools. It may also include the installation of up to a combined total of eight portable classrooms at three of the receiving schools without increasing original student capacity by more than 25 percent at any campus.

Brooktree, Noble, Summerdale, and Vinci Park Elementary Schools are expected to accommodate the projected 2025-26 enrollment without requiring portable classrooms, and no physical modifications are anticipated at these campuses as part of the consolidation. However, Majestic Way, Northwood, and Ruskin Elementary Schools may require additional facilities to support the projected 2025-26 enrollment. Majestic Way Elementary may require the addition of two portable classrooms ([Appendix C](#), page 12), Northwood Elementary may require three portable classrooms ([Appendix C](#), page 14), and Ruskin Elementary may also require three portable classrooms ([Appendix C](#), page 15).

If the installation of portable classrooms becomes necessary at any or all Majestic Way, Northwood, and/or Ruskin Elementary School campuses, the total increase District-wide would not exceed 25 percent of the original capacity or involve more than 10 portable classrooms. Additionally, at each of these campuses individually, the total increase would also not exceed 25 percent of the original campus capacity or include more than 10 portable classrooms.

Refer to the categorical exemptions below, specifically Section 15314, Minor Addition to Schools.

## Categorical Exemptions

The proposed project qualifies for a categorical exemption under Article 19, Section 15301, Section 15302, Section 15303, Section 15311, Section 15314, and Section 15322 of the California Environmental Quality Act (CEQA).

### Section 15301 Existing Facilities

Class 1 consists of the operation, repair, maintenance, permitting, leasing, licensing, or minor alteration of existing public or private structures, facilities, mechanical equipment, or topographical features, involving negligible or *no expansion of existing or former use* (emphasis added). The types of “existing facilities” itemized below are not intended to be all-inclusive of the types of projects which might fall within Class 1. The key consideration is whether the project involves negligible or no expansion of use. Examples include but are not limited to:

- (a) Interior or exterior alterations involving such things as interior partitions, plumbing, and electrical conveyances;
- (b) Existing facilities of both investor and publicly owned utilities used to provide electric power, natural gas, sewerage, or other public utility services;
- (c) Existing highways and streets, sidewalks, gutters, bicycle and pedestrian trails, and similar facilities (this includes road grading for the purpose of public safety), and other alterations such as the addition of bicycle facilities, including but not limited to bicycle parking, bicycle-share facilities and bicycle lanes, transit improvements such as bus lanes, pedestrian crossings, street trees, and other similar alterations that do not create additional automobile lanes);
- (d) Restoration or rehabilitation of deteriorated or damaged structures, facilities, or mechanical equipment to meet current standards of public health and safety, unless it is determined that the damage was substantial and resulted from an environmental hazard such as earthquake, landslide, or flood;
- (e) Additions to existing structures provided that the addition will not result in an increase of more than:
  - (1) 50 percent of the floor area of the structures before the addition, or 2,500 square feet, whichever is less; or
  - (2) 10,000 square feet if:
    - (A) The project is in an area where all public services and facilities are available to allow for maximum development permissible in the General Plan and

- (B) The area in which the project is located is not environmentally sensitive.
- (f) Addition of safety or health protection devices for use during construction of or in conjunction with existing structures, facilities, or mechanical equipment, or topographical features including navigational devices;
- (g) New copy on existing on and off-premise signs;
- (h) Maintenance of existing landscaping, native growth, and water supply reservoirs (excluding the use of pesticides, as defined in Section 12753, Division 7, Chapter 2, Food and Agricultural Code);
- (i) Maintenance of fish screens, fish ladders, wildlife habitat areas, artificial wildlife waterway devices, streamflows, springs and waterholes, and stream channels (clearing of debris) to protect fish and wildlife resources;
- (j) Fish stocking by the California Department of Fish and Game;
- (k) Division of existing multiple family or single-family residences into common-interest ownership and subdivision of existing commercial or industrial buildings, where no physical changes occur which are not otherwise exempt;
- (l) Demolition and removal of individual small structures listed in this subdivision:
  - (1) One single-family residence. In urbanized areas, up to three single-family residences may be demolished under this exemption.
  - (2) A duplex or similar multifamily residential structure. In urbanized areas, this exemption applies to duplexes and similar structures where not more than six dwelling units will be demolished.
  - (3) A store, motel, office, restaurant, or similar small commercial structure if designed for an occupant load of 30 persons or less. In urbanized areas, the exemption also applies to the demolition of up to three such commercial buildings on sites zoned for such use.
  - (4) Accessory (appurtenant) structures including garages, carports, patios, swimming pools, and fences.
- (m) Minor repairs and alterations to existing dams and appurtenant structures under the supervision of the Department of Water Resources.
- (n) Conversion of a single family residence to office use.

- (o) Installation, in an existing facility occupied by a medical waste generator, of a steam sterilization unit for the treatment of medical waste generated by that facility provided that the unit is installed and operated in accordance with the Medical Waste Management Act (Section 117600, et seq., of the Health and Safety Code) and accepts no offsite waste.
- (p) Use of a single-family residence as a small family day care home, as defined in Section 1596.78 of the Health and Safety Code.

**Discussion.** The proposed project qualifies for this exemption as each of the receiving schools are existing facilities and the project consists of the operation and minor alteration of these facilities, involving negligible or no expansion of existing or former use. The proposed project may include the installation of up to a combined total of eight portable classrooms at three of the receiving schools without increasing original student capacity by more than 25 percent at any campus.

Brooktree, Noble, Summerdale, and Vinci Park Elementary Schools are expected to accommodate the projected 2025-26 enrollment without requiring portable classrooms, and no physical modifications are anticipated at these campuses as part of the consolidation. However, Majestic Way, Northwood, and Ruskin Elementary Schools may require additional facilities to support the projected 2025-26 enrollment. Majestic Way Elementary may require the addition of two portable classrooms ([Appendix C](#), page 12), Northwood Elementary may require three portable classrooms ([Appendix C](#), page 14), and Ruskin Elementary may also require three portable classrooms ([Appendix C](#), page 15).

### **Section 15303      New Construction or Conversion of Small Structures**

Class 3 consists of construction and location of limited numbers of new, small facilities or structures; installation of small new equipment and facilities in small structures; and the conversion of existing small structures from one use to another where only minor modifications are made in the exterior of the structure. The numbers of structures described in this section are the maximum allowable on any legal parcel. Examples of this exemption include, but are not limited to:

- (a) One single-family residence, or a second dwelling unit in a residential zone. In urbanized areas, up to three single-family residences may be constructed or converted under this exemption.
- (b) A duplex or similar multi-family residential structure, totaling no more than four dwelling units. In urbanized areas, this exemption applies to apartments, duplexes and similar structures designed for not more than six dwelling units.
- (c) A store, motel, office, restaurant or similar structure not involving the use of significant amounts of hazardous substances, and not exceeding 2500 square feet in floor area. In urbanized areas, the

exemption also applies to up to four such commercial buildings not exceeding 10,000 square feet in floor area on sites zoned for such use if not involving the use of significant amounts of hazardous substances where all necessary public services and facilities are available and the surrounding area is not environmentally sensitive.

- (d) Water main, sewage, electrical, gas, and other utility extensions, including street improvements, of reasonable length to serve such construction.
- (e) Accessory (appurtenant) structures including garages, carports, patios, swimming pools, and fences.
- (f) An accessory steam sterilization unit for the treatment of medical waste at a facility occupied by a medical waste generator, provided that the unit is installed and operated in accordance with the Medical Waste Management Act (Section 117600, et seq., of the Health and Safety Code) and accepts no offsite waste.

**Discussion.** The proposed project qualifies for this exemption as it may include the installation of up to a combined total of eight portable classrooms at three of the receiving schools without increasing original student capacity by more than 25 percent at any campus.

Brooktree, Noble, Summerdale, and Vinci Park Elementary Schools are expected to accommodate the projected 2025-26 enrollment without requiring portable classrooms, and no physical modifications are anticipated at these campuses as part of the consolidation. However, Majestic Way, Northwood, and Ruskin Elementary Schools may require additional facilities to support the projected 2025-26 enrollment. Majestic Way Elementary may require the addition of two portable classrooms ([Appendix C](#), page 12), Northwood Elementary may require three portable classrooms ([Appendix C](#), page 14), and Ruskin Elementary may also require three portable classrooms ([Appendix C](#), page 15).

## **Section 15311      Accessory Structures**

Class 11 consists of construction, or placement of minor structures accessory to (appurtenant to) existing commercial, industrial, or institutional facilities, including but not limited to:

- (a) On-premise signs;
- (b) Small parking lots;
- (c) Placement of seasonal or temporary use items such as lifeguard towers, mobile food units, portable restrooms, or similar items in generally the same locations from time to time in publicly owned parks, stadiums, or other facilities designed for public use.



**Discussion.** The proposed project qualifies for this exemption as it may include the installation of up to a combined total of eight portable classrooms at three of the receiving schools without increasing original student capacity by more than 25 percent at any campus.

Brooktree, Noble, Summerdale, and Vinci Park Elementary Schools are expected to accommodate the projected 2025-26 enrollment without requiring portable classrooms, and no physical modifications are anticipated at these campuses as part of the consolidation. However, Majestic Way, Northwood, and Ruskin Elementary Schools may require additional facilities to support the projected 2025-26 enrollment. Majestic Way Elementary may require the addition of two portable classrooms ([Appendix C](#), page 12), Northwood Elementary may require three portable classrooms ([Appendix C](#), page 14), and Ruskin Elementary may also require three portable classrooms ([Appendix C](#), page 15).

If the installation of portable classrooms becomes necessary at any or all Majestic Way, Northwood, and/or Ruskin Elementary School campuses, the total increase District-wide would not exceed 25 percent of the original capacity or involve more than 10 portable classrooms. Additionally, at each of these campuses individually, the total increase would also not exceed 25 percent of the original campus capacity or include more than 10 portable classrooms.

#### **Section 15314      Minor Addition to Schools**

Class 14 consists of minor additions to existing schools within existing school grounds where the addition does not increase original student capacity by more than 25% or ten classrooms, whichever is less. The addition of portable classrooms is included in this exemption.

**Discussion.** The proposed project qualifies for this exemption as it may include the installation of up to a combined total of eight portable classrooms at three of the receiving schools without increasing original student capacity by more than 25 percent at any campus.

As shown in [Table 1](#) (page 3), based on projected 2025-26 enrollment, Brooktree Elementary is expected to have an excess capacity of 104 students, Majestic Way Elementary 20 students, Noble Elementary 63 students, Northwood Elementary 83 students, Ruskin Elementary 15 students, Summerdale Elementary 152 students, and Vinci Park Elementary 231 students. As part of the consolidation, several academic programs will be relocated ([Table 2](#), page 3). While all seven receiving schools have sufficient capacity, including excess space, the addition of academic programs will further impact campuses with smaller excess capacity. As a result, portable classrooms may be required to accommodate the projected enrollment and program relocations.

Brooktree, Noble, Summerdale, and Vinci Park Elementary Schools are expected to accommodate the projected 2025-26 enrollment without requiring portable classrooms, and no physical modifications are anticipated at these campuses as part of the consolidation. However, Majestic Way, Northwood, and Ruskin Elementary Schools may require additional facilities to support the



projected 2025-26 enrollment. Majestic Way Elementary may require the addition of two portable classrooms ([Appendix C](#), page 12), Northwood Elementary may require three portable classrooms ([Appendix C](#), page 14), and Ruskin Elementary may also require three portable classrooms ([Appendix C](#), page 15). Based on operational capacities:

- Majestic Way Elementary School: 25 percent of 588 students = 147 students;
- Northwood Elementary: 25 percent of 670 students = 168 students; and
- Ruskin Elementary School: 25 percent of 706 students = 177 students.

Therefore, any increase in student capacity would remain within these limits.

If the installation of portable classrooms becomes necessary at any or all Majestic Way, Northwood, and/or Ruskin Elementary School campuses, the total increase District-wide would not exceed 25 percent of the original capacity or involve more than 10 portable classrooms. Additionally, at each of these campuses individually, the total increase would also not exceed 25 percent of the original campus capacity or include more than 10 portable classrooms.

## **Section 15322 Educational or Training Programs Involving no Physical Changes**

Class 22 consists of the adoption, alteration, or termination of educational or training programs which involve no physical alteration in the area affected or which involve physical changes only in the interior of existing school or training structures. Examples include but are not limited to:

- (a) Development of or changes in curriculum or training methods.
- (b) Changes in the grade structure in a school which do not result in changes in student transportation.

**Discussion.** The Berryessa Union School District approved the closure of Cherrywood, Laneview, and Toyon Elementary Schools (Resolution No. 24-08, December 2024). While this consolidation affects student transportation, it does not alter the grade structure at any of the seven receiving schools. Additionally, Mandarin Immersion and Special Day Classes may be introduced, fully or partially, at receiving schools where these programs do not currently exist. However, their implementation will not require portable classrooms, as they will be housed in existing classrooms. As a result, the receiving schools will adopt new educational programs without any physical modifications. Therefore, the project qualifies for this exemption.

## **Environmental Analysis**

### **Aesthetics**

None of the seven receiving schools are located within an identified scenic area (Caltrans 2025; City of San Jose 2016). Consolidating the three schools may include the possible addition of portables to the existing Northwood Elementary School, Majestic Way Elementary School, and Ruskin Elementary School campuses, which would not result in a significant aesthetic (or visual) impact on

the environment. It would not affect any scenic vistas, damage scenic resources within a state scenic highway, conflict with applicable zoning or other regulations governing scenic quality, or create a new source of substantial light or glare that would adversely affect day or nighttime views in the area.

## **Agriculture and Forest Resources**

None of the seven receiving schools are located on agricultural land and nor do they contain forest resources (City of San Jose 2012). The closure of Cherrywood, Laneview, and Toyon Elementary Schools and consolidation of operations at Brooktree, Majestic Way, Noble, Northwood, Ruskin, Summerdale, and Vinci Park Elementary Schools would not result in conversion of important farmland, or conflict with existing zoning for agricultural use, or a Williamson Act contract or with zoning for forest land.

## **Biological Resources**

All seven receiving schools are located within residential neighborhoods and are not generally associated with sensitive biological resources. The following discussion addresses the proposed, possible addition of portable classrooms at Majestic Way, Northwood, and Ruskin Elementary Schools.

### ***Majestic Way Elementary School***

Berryessa Creek Park borders Majestic Way Elementary School to the southwest and south, while Berryessa Creek runs adjacent to the northwestern boundary of the campus. Two portable classrooms may be required on the western side of the campus, adjacent to Berryessa Creek Park (southwest) and Berryessa Creek (northwest) ([Appendix C, page 12](#)). If required, these portables would be placed on previously disturbed land within the Majestic Way Elementary School boundary and would not result in physical impacts to Berryessa Creek Park or Berryessa Creek.

### ***Northwood Elementary School***

Selwyn Park and Northwood Park Playground are located adjacent to the southwestern boundary of Northwood Elementary School. Three portable classrooms may be required at the southcentral region of the campus, approximately 215 feet from the Selwyn Park northern boundary and approximately 509 feet from the Northwood Park Playground ([Appendix C, page 14](#)). Placement of the portables would remain within the Northwood Elementary School boundary and would not result in physical impacts to Selwyn Park or Northwood Park Playground.

### ***Ruskin Elementary School***

A drainage channel is located west of the Ruskin Elementary School grass-covered recreation area; however, the addition of portable classrooms on campus would not have any impact on the drainage channel. Three portable classrooms may be required at the northeast corner of the campus, adjacent to Tulare Drive ([Appendix C, page 15](#)). This area appears to have been used as a garden as early as 2011, but has not been in use over the last few years. If these portables are determined to be

necessary, removal of up to four, relatively small ornamental (non-native) trees would be required. Plans show additional tree planting to replace the trees that could be removed.

### ***Conclusion***

The closure of Cherrywood, Laneview, and Toyon Elementary Schools and the consolidation of operations at the seven receiving schools, including the potential addition of portable classrooms, would not result in impacts to sensitive biological resources.

### **Cultural Resources**

The closure of Cherrywood, Laneview, and Toyon Elementary Schools and consolidation of operations at the seven receiving schools, including the potential addition of portable classrooms to three of the existing campuses, does not include earth-moving activities that might result an adverse change in the significance of any buried historical resource pursuant to § 15064.5, cause an adverse change in the significance of an archaeological resource pursuant to § 15064.5, or disturb any human remains, including those interred outside of dedicated cemeteries.

### **Geology and Soils**

Brooktree, Northwood, and Vinci Park Elementary Schools are entirely within liquefaction zones, while Majestic Way Elementary is adjacent to one due to its proximity to Berryessa Creek (California Department of Conservation 2025). To mitigate potential liquefaction impacts, the District will comply with applicable California Building Standards Code regulations, which have been adopted by the Division of the State Architect that oversees school construction projects, to ensure proper building design. Compliance with these requirements would prevent adverse effects, including the risk of loss, injury, or death due to liquefaction.

The closure of Cherrywood, Laneview, and Toyon Elementary Schools and consolidation of operations at the seven receiving schools, including the potential addition of portable classrooms to the existing campuses, would not result in direct or indirect potential adverse effects, including the risk of loss, injury, or death involving any of the following:

- rupture of a known earthquake fault, as delineated on the most recent Alquist-Priolo Earthquake Fault Zoning Map, issued by the State Geologist for the area or based on other substantial evidence of a known fault;
- strong seismic ground shaking;
- seismic-related ground failure, including liquefaction; or
- landslides.

Additionally, the project would not result in soil erosion or the loss of topsoil, be located on a geologic unit or soil that is unstable, or that would become unstable as a result of the project, and potentially result in on- or off-site landslide, lateral spreading, subsidence, liquefaction or collapse.

Finally, the closure of Cherrywood, Laneview, and Toyon Elementary Schools and consolidation of operations at the seven receiving schools, including the potential addition of portable classrooms to the existing campuses, would not include earth-moving activities that could directly or indirectly destroy a unique paleontological resource or site or unique geologic feature.

### **Hydrology and Water Quality**

The closure of Cherrywood, Laneview, and Toyon Elementary Schools and consolidation of operations at the seven receiving schools, would not result in a cumulative increase in students within the District and may include the potential addition of portable classrooms to three of the existing campuses. The consolidation activities and addition of these classrooms would not result in an increase in water demand, or require significant earth-moving activities. Therefore, the project would not violate any water quality standards or waste discharge requirements or otherwise degrade surface or ground water quality; decrease groundwater supplies or interfere with groundwater recharge; alter the existing drainage pattern of the site or area, including through the alteration of the course of a stream or river or through the addition of impervious surfaces, in a manner which would result in a substantial erosion or siltation on- or off-site; increase the rate or amount of surface runoff in a manner which would result in flooding on- or offsite; create or contribute runoff water which would exceed the capacity of existing or planned stormwater drainage systems or provide substantial additional sources of polluted runoff; or impede or redirect flood flows; or conflict with or obstruct implementation of a water quality control plan or sustainable groundwater management plan.

### **Transportation (Vehicle Miles Traveled)**

A vehicle miles traveled study was prepared by Hexagon Transportation Consultants (“Hexagon”) for the project to evaluate the change in vehicle miles traveled that would occur with the closure of Cherrywood, Laneview, and Toyon Elementary Schools and transferring the students to the seven receiving schools. Please refer to [Appendix B](#) for the full study.

At the individual school level, the proposed consolidation plan is expected to reduce vehicle miles traveled (VMT) for Laneview Elementary (9.9 percent decrease) and Toyon Elementary (27.8 percent decrease) while increasing VMT for Cherrywood Elementary (63.4 percent increase) compared to 1999-2000 baseline levels. Overall, these changes result in a 6.7 percent increase in VMT among the three schools relative to the baseline. Hexagon estimated the current average distance to school for Cherrywood students would increase from 0.63 to 1.12 miles; for Laneview students it would increase from 0.69 to 1.0 miles; and for Toyon students it would increase from 0.73 to 1.10 miles. This increase is offset by broader district-wide enrollment declines, which have led to a significant reduction in total student enrollment over the past 25 years. As a result, the district-wide VMT is expected to decrease by 20.2 percent compared to 1999-2000 baseline levels.

## **Air Quality**

San Jose is within the boundary of the Bay Area Air Quality Management District. The air district is responsible for managing criteria air emissions within its boundary to meet state and federal regulations. The air district establishes thresholds of significance for criteria air pollutants that are used to evaluate the significance of air quality impacts of projects that are subject to CEQA, including operating proposed new schools. Transportation sources, particularly passenger cars and light-duty trucks, are typically the dominant source of air emissions generated by such projects, including schools. The greater a project's VMT, the greater the air pollutant volumes it generates from transportation sources.

As described in the Transportation section above, the closure of Cherrywood, Laneview, and Toyon Elementary Schools would result in reduced historic vehicle miles traveled (20.2 percent since the baseline school year of 1999-2000). Therefore, the total volume of historic criteria air emissions resulting from these actions is also expected to decline. Consequently, no significant impacts from conflicting with or obstructing implementation of an air quality plan, from increases in criteria air pollutant emissions volumes that exceed applicable standards, or from exposing sensitive receptors to substantial pollutant concentrations would occur. Closing Cherrywood, Laneview, and Toyon Elementary Schools and consolidating operations at the seven receiving sites, which may include the potential addition of portable classrooms to the existing campuses, would not result in other air emissions that could adversely affect people.

## **Greenhouse Gas Emissions**

Analogous to the discussion under Air Quality above, the greenhouse gas emissions inventory (the sum of emissions from all sources) for projects subject to CEQA, including operating schools, is commonly dominated by emissions from transportation sources, particularly passenger cars and light-duty trucks. The greater the number of vehicle miles traveled associated with a project, the greater the volume of transportation source greenhouse gas emissions it generates. As described in the Transportation section above the closure of Cherrywood, Laneview, and Toyon Elementary Schools and consolidation of operations at the seven receiving schools is expected to result in reduced vehicle miles traveled when compared to historical peak enrollment at the seven receiving schools (20.2 percent since the baseline school year of 1999-2000). Therefore, the total volume of transportation source greenhouse gas emissions resulting from these actions would also decline when compared to the historic peak enrollment.

Building and lighting energy use (natural gas and electricity) is commonly the second most significant source of greenhouse gas emissions in the inventory of projects subject to CEQA. While the District does not anticipate the need to add new classrooms, it is possible that portable classrooms may be added based upon enrollment and class needs; however, adding a limited number of portable classrooms would not substantially increase existing energy demand. Additionally, as discussed above, the historic enrollment of all seven receiving sites is significantly greater than

projected enrollment, with the exception of Northwood and Ruskin Elementary School, which are projected to exceed peak enrollments by three students or less and would result in minimal impacts. With energy demand from operating Cherrywood, Laneview, and Toyon Elementary Schools being eliminated or significantly reduced and no significant increase in energy demand expected at the seven receiving schools, overall energy demand is expected to decline.

The closure of Cherrywood, Laneview, and Toyon Elementary Schools and consolidation of operations at the seven receiving schools, including the potential addition of portable classrooms, would not have a significant impact from generating greenhouse gas emissions that impact the environment. Further, due to the anticipated net reduction in greenhouse gas emissions, no conflicts with any plan for reducing greenhouse gas emissions would occur.

## Energy

Electricity, natural gas, and transportation fuel are the most common forms of energy used in the operation of land use projects, including schools. As described in the Greenhouse Gas Emissions section above, the closure of Cherrywood, Laneview, and Toyon Elementary Schools and consolidation of operations at the seven receiving schools, including the potential addition of portable classrooms, is expected to result in reduced electricity and natural gas demand. As described in the Transportation section above, vehicle miles traveled would be lower than historic miles, which in turn would result in reduced transportation fuel demand as compared to the historic level of use. Overall, energy use would decline and would neither be wasteful, inefficient, nor unnecessary. No conflict with any plan for providing renewable energy or promoting energy efficiency would occur as no new energy demand would occur.

## Noise

The closure of Cherrywood, Laneview, and Toyon Elementary Schools and the consolidation of operations at the seven receiving schools, including the potential addition of portable classrooms, would not result in significant noise impacts. Due to a steady decline in enrollment over the years, traffic volumes on surrounding streets have decreased and will remain lower with project implementation compared to peak enrollment levels at all seven receiving schools, except for Northwood Elementary (projected to exceed peak enrollment by three students) and Ruskin Elementary (projected to exceed peak enrollment by two students) in the 2025-26 academic year (Table 1, page 2). Consequently, noise levels at all receiving schools will remain below historic levels, except for Northwood and Ruskin Elementary Schools, where any increase would be negligible due to the minimal enrollment exceedance.

## Exceptions to Categorical Exemptions

Section 15300.2 of the CEQA Guidelines lists exceptions that would prohibit a project from qualifying for a Categorical Exemption, even if the project satisfies the requirements for one or more of the exemption classes. EMC Planning Group conducted a review and evaluation of the

proposed project and concluded that none of the exceptions listed in CEQA Guidelines section 15300.2 (a-f) apply to the proposed project (discussed below). Therefore, the Statutory Exemption, as well as the Categorical Exemption, is appropriate pursuant to CEQA Guidelines Sections 15301, 15303, 15311, 15314, and 15322.

- a) Location. Classes 3, 4, 5, 6, and 11 are qualified by consideration of where the project is to be located – a project that is ordinarily insignificant in its impact on the environment may in a particularly sensitive environment be significant. Therefore, these classes are considered to apply all instances, except where the project may impact on an environmental resource of hazardous or critical concern where designated, precisely mapped, and officially adopted pursuant to law by federal, state, or local agencies.

**Discussion.** The seven receiving schools are located within existing, developed residential areas in the City of San Jose. There is no evidence to suggest that the seven receiving schools are located in particularly sensitive environments. See the Environmental Analysis discussion above.

- b) Cumulative Impact. All exemptions for these classes are inapplicable when the cumulative impact of successive projects of the same type in the same place, over time is significant.

**Discussion.** The District includes 10 elementary schools, of which this project includes the closure of three (Cherrywood, Laneview, and Toyon Elementary Schools) and consolidation among Brooktree, Majestic Way, Noble, Northwood, Ruskin, Summerdale, and Vinci Park Elementary Schools. The District is not planning other successive projects of the same type in the same place. Therefore, there is no cumulative impact that would be significant.

- c) Significant Effect. A categorical exemption shall not be used for an activity where there is a reasonable possibility that the activity will have a significant effect on the environment due to unusual circumstances.

**Discussion.** Brooktree, Majestic Way, Noble, Northwood, Ruskin, Summerdale, and Vinci Park Elementary Schools have historically operated as public schools and will continue to do so following the consolidation of operations from Cherrywood, Laneview, and Toyon Elementary Schools. The District and its consultants are not aware of any unusual circumstances associated with the project that would create a reasonable possibility of a significant environmental impact. Refer to the Environmental Analysis section above for further details.

- d) Scenic Highways. A categorical exemption shall not be used for a project which may result in damage to scenic resources, including but not limited to, trees, historic buildings, rock outcroppings, or similar resources, within a highway officially designated as a state scenic highway. This does not apply to improvements which are required as mitigation by an adopted negative declaration or certified EIR.



**Discussion.** According to the California Department of Transportation Scenic Highway Map, none of the seven receiving schools are located near a designated scenic highway (Caltrans 2025). Additionally, none of the schools are within a designated scenic corridor (City of San Jose 2016).

The proposed project involves the closure of Cherrywood, Laneview, and Toyon Elementary Schools and the consolidation of operations at the seven receiving schools. These closures would not involve any physical modifications to the respective sites and, therefore, would not impact scenic resources. At Majestic Way, Northwood, and Ruskin Elementary Schools, the consolidation may require the installation of portable classrooms, depending on enrollment and classroom needs. However, since none of the schools are located near a designated scenic highway or within a scenic corridor, the project would not result in adverse impacts to scenic resources associated with a state scenic highway.

- e) Hazardous Waste Sites. A categorical exemption shall not be used for a project located on a site which is included on any list compiled pursuant to Section 65962.5 of the Government Code.

**Discussion.** The proposed project is not located on a site that is included on any list compiled pursuant to Section 65962.5 of the Government Code. The receiving school sites are not located on the California Environmental Protection Agency's Cortese List (Health and Safety Code Section 25187.5). The State Water Resources Control Board's GeoTracker (Health and Safety Code Section 25295 and Water Code Sections 13273 and 13301) does not indicate any hazardous sites at any of the receiving schools. The receiving school sites are not listed on the California Environmental Protection Agency's list of solid waste sites identified by the Water Board with waste constituents above hazardous waste levels outside the waste management unit (Health and Safety Code Section 116395).

- f) Historical Resources. A categorical exemption shall not be used for a project which may cause a substantial adverse change in the significance of a historical resource.

**Discussion.** The proposed project does not include any physical modifications to existing buildings associated with the closure of Cherrywood, Laneview, or Toyon Elementary Schools. Additionally, none of the receiving schools are identified as a historically significant resource (City of San Jose 2025). Therefore, the potential installation of portable classrooms would not result in a substantial adverse change to a historical resource.

## Evidence And Findings

The proposed project involves the closure of Cherrywood, Laneview, and Toyon Elementary Schools and the adjustment of school attendance boundaries to support the consolidation of operations into Brooktree, Majestic Way, Noble, Northwood, Ruskin, Summerdale, and Vinci Park



Elementary Schools. To accommodate potential enrollment fluctuations, the project may include the installation of up to eight portable classrooms between the seven receiving schools.

As shown in [Table 1](#) (page 2), historical peak enrollment data indicate that all receiving schools, except Northwood Elementary (exceeding peak enrollment by three students) and Ruskin Elementary (exceeding peak enrollment by two students), have previously supported enrollment levels higher than the projected 2025-26 academic year figures. Despite the minor differences in peak and projected enrollment levels at Northwood and Ruskin Elementary Schools, all receiving schools have sufficient operational capacity to accommodate projected enrollment without exceeding available resources.

The District does not anticipate the need for additional classroom facilities; however, if enrollment in specific programs requires additional space, portable classrooms may be installed. The total number of portables would not exceed 10 across all campuses, with potential placements at Majestic Way, Northwood, and Ruskin Elementary Schools.

Any installation of portable classrooms would remain within a 25 percent increase in original campus capacity or 10 classrooms and would not require substantial infrastructure modifications. Based on these findings, the proposed school attendance boundary adjustment and consolidations, including potential portable classroom additions can be executed without significant alterations to the existing campus infrastructure of all seven receiving schools, Brooktree, Majestic Way, Noble, Northwood, Ruskin, Summerdale, and Vinci Park Elementary Schools.

## Sources

### Aesthetics

Caltrans. 2025. "California State Scenic Highway System Map."

Accessed on January 30, 2025.

<https://caltrans.maps.arcgis.com/apps/webappviewer/index.html?id=465dfd3d807c46cc8e8057116f1aaca>

City of San Jose. 2011. "*Envision San Jose 2040 General Plan Scenic Corridors Diagram*."

Accessed on January 30, 2025.

<https://www.sanjoseca.gov/home/showpublisheddocument/22565/636688980487230000>

### Agriculture and Forest Resources

City of San Jose. 2012. "*Envision San Jose 2040 General Plan Land Use/Transportation Diagram*."

Accessed on January 30, 2025.

<https://www.sanjoseca.gov/home/showpublisheddocument/22555/636688980471600000>

### Biological Resources

Berryessa Union School District Proposed School Attendance Boundary. February 2025.

U.S. Fish and Wildlife Service. 2025. "National Wetlands Inventory Mapper."

Accessed on January 30, 2025.

<https://fwsprimary.wim.usgs.gov/wetlands/apps/wetlands-mapper/>

### Geology and Soils

California Department of Conservation. "Earthquake Zones of Required Investigation."

Accessed on February 6, 2025.

<https://maps.conservation.ca.gov/cgs/informationwarehouse/eqzapp/>

### Transportation (Vehicle Miles Traveled)

Hexagon Transportation Consultants. February 10, 2025. "VMT Study for Berryessa Union School District"

### Air Quality

Hexagon Transportation Consultants. February 10, 2025. "VMT Study for Berryessa Union School District"

### Greenhouse Gas Emissions

Hexagon Transportation Consultants. February 10, 2025. "VMT Study for Berryessa Union School District"

## Energy

Hexagon Transportation Consultants. February 10, 2025. “VMT Study for Berryessa Union School District”

## Exceptions to Categorical Exemptions

California Environmental Protection Agency. 2025. “Cortese List Data Resources.”

Accessed on January 30, 2025.

<https://calepa.ca.gov/sitecleanup/corteselist/>

Caltrans. 2025. “California State Scenic Highway System Map.”

Accessed on January 30, 2025.

<https://caltrans.maps.arcgis.com/apps/webappviewer/index.html?id=465dfd3d807c46cc8e8057116f1aaca>

City of San Jose. 2025. “Historic Resource Inventory.”

Accessed on January 30, 2025.

<https://www.arcgis.com/apps/webappviewer/index.html?id=b2d7cc355a86493c8da904b8c2fc3e3e&extent=-13591970.1207%2C4462771.7617%2C-13533877.9792%2C4499308.6613%2C102100>

Berryessa Union School District Resolution No. 24-08  
Approving School Consolidation





**BERRYESSA UNION SCHOOL DISTRICT  
RESOLUTION NO. 24-08  
Approving School Consolidation**

**WHEREAS**, Berryessa Union School District (“District”) has experienced significant declining enrollment over a protracted period of time, with the total enrollment of the District dropping by almost thirty percent (30%), or approximately two thousand (2,000) students, in the ten-year period between 2012-13 and 2022-23;

**WHEREAS**, commencing in 2022, due to financial challenges in part stemming from declining enrollment, the District Budget Stabilization Committee was established to recommend to the Board of Trustees (“Board”) a plan for six million dollars (\$6,000,000) in reductions;

**WHEREAS**, one of the recommendations of the District Budget Stabilization Committee in order to achieve the necessary reductions was school consolidation;

**WHEREAS**, on December 6, 2023, at a special meeting, the Board agreed to move forward with the process of establishing a School Consolidation Advisory Committee (“Committee”) to review and analyze the school sites within the District, and determine which might be closed and/or consolidated;

**WHEREAS**, on April 17, 2024, as part of its budget stabilization commitment, the Board approved the formation of the Committee to study and recommend schools for closure and/or consolidation, based on data and established criteria;

**WHEREAS**, the Committee initially consisted of twenty-five (25) members appointed by the Board, three (3) of whom resigned and one (1) of whom was replaced, ultimately resulting in the Committee having twenty-three (23) members;

**WHEREAS**, the Committee was comprised of parents, representatives from District committees such as District English Learner Advisory Committee (“DELAC”), English Language Advisory Committee (“ELAC”), Citizen Bond Oversight Committee (“CBOC”), special education parents, labor union representatives, community members, and District staff, and otherwise including representation consistent with the California Department of Education (“CDE”) guidelines;

**WHEREAS**, the Committee considered community input, criteria recommended by the CDE and adopted by the Committee, and other data, and made recommendations for consolidation on October 24, 2024, which recommendations are included in the Committee’s Report dated November 4, 2024. The Report is hosted on the School Consolidation Committee page of the District’s website, and available at: <https://www.berryessa.k12.ca.us/Departments/Business-Services/School-Consolidation-Advisory-Committee/index.html>;

**WHEREAS**, consistent with Education Code section 17387 and CDE’s guidelines on school consolidation, the District engaged in a process to garner meaningful input and community involvement regarding school closure and/or consolidation scenarios, which has included, but not been limited to, the following activities:

- The District established the Committee to analyze the District’s school sites and make a recommendation regarding school consolidation;

- The Committee convened nine (9) public Committee meetings, held on April 25, 2024, May 9, 2024, June 13, 2024, June 27, 2024, August 8, 2024, September 5, 2024, October 3, 2024, October 17, 2024, and October 24, 2024;
- District staff conducted three (3) public town hall meetings at three (3) different locations within the District, held on August 27, 2024, August 28, 2024, and September 4, 2024;
- The District has maintained an active “School Consolidation Advisory Committee” page on the District’s website, which hosts resources pertaining to school closure and consolidation; and
- The Board held two (2) special Board meeting study sessions on November 12, 2024, and December 9, 2024;

**WHEREAS**, the Board has reviewed and considered the Committee’s Report; and,

**WHEREAS**, consolidating some of the District’s campuses is part of an overall plan to reduce annual operational costs and maintain long term financial stability in the District.

**NOW, THEREFORE, BE IT FOUND, DETERMINED, AND RESOLVED BY THE BOARD OF TRUSTEES OF THE BERRYESSA UNION SCHOOL DISTRICT, SANTA CLARA COUNTY, CALIFORNIA, AS FOLLOWS:**

1. The foregoing recitals are adopted as true and correct.
2. Subject to the conditions set forth below, after consideration of the meaningful input and community involvement received throughout this process as outlined above, review of available data and of the Committee’s Report, and consideration of the CDE’s guidelines, and in order to address projected budget shortfalls and declining enrollment, the Board approves the following consolidation of its schools and hereby finds and determines that the Consolidation is in the best interests of the District, its students, and the community.

The following elementary schools shall close at the conclusion of the 2024-25 school year:

Cherrywood, Toyon, and Laneview.

3. The Board’s approval of the foregoing closure and consolidation shall be subject to and conditioned upon the following, each of which shall be met prior to closure or consolidation of the schools identified above:
  - The District’s attendance boundaries shall be revised in a manner that is consistent with the Education Code and Board Policy, and shall be presented to the Board for approval.
  - A transition plan shall be prepared that outlines the District’s anticipated community outreach efforts to assist students and their families with the transition, and shall be presented to the Board.
  - Consideration pursuant to the California Environmental Quality Act (Pub. Res. Code, §§ 21000, et seq. (“CEQA”)) of the foregoing closure and consolidation and the attendance boundary adjustment shall occur, including an analysis of whether any exemptions are

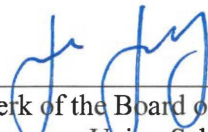
applicable to the consolidation. The CEQA consideration shall be presented to the Board for review and approval.

4. The Superintendent, and/or her designee, are authorized and directed to take such further actions as may be necessary and appropriate to carry out the intent of this Resolution.

**PASSED AND ADOPTED** by the Board of Trustees of the Berryessa Union School District on December 18, 2024 by the following vote:

Thelma Boac	<u>Aye</u>	Jaria Jaug	<u>Nay</u>	Hugo Jimenez	<u>Aye</u>
Khoa Nguyen	<u>Aye</u>	Jai Srinivasan	<u>Aye</u>		

I, Jaria Jaug, Clerk of the Board of Trustees of the Berryessa Union School District of the Santa Clara County, California, do hereby certify that the foregoing is a full, true and correct copy of a resolution adopted by the Board at a meeting thereof held at its regular place of meeting on the date shown above and by the vote stated, which resolution is on file in the office of said Board.

  
\_\_\_\_\_  
Clerk of the Board of Trustees  
Berryessa Union School District  
Santa Clara County, California

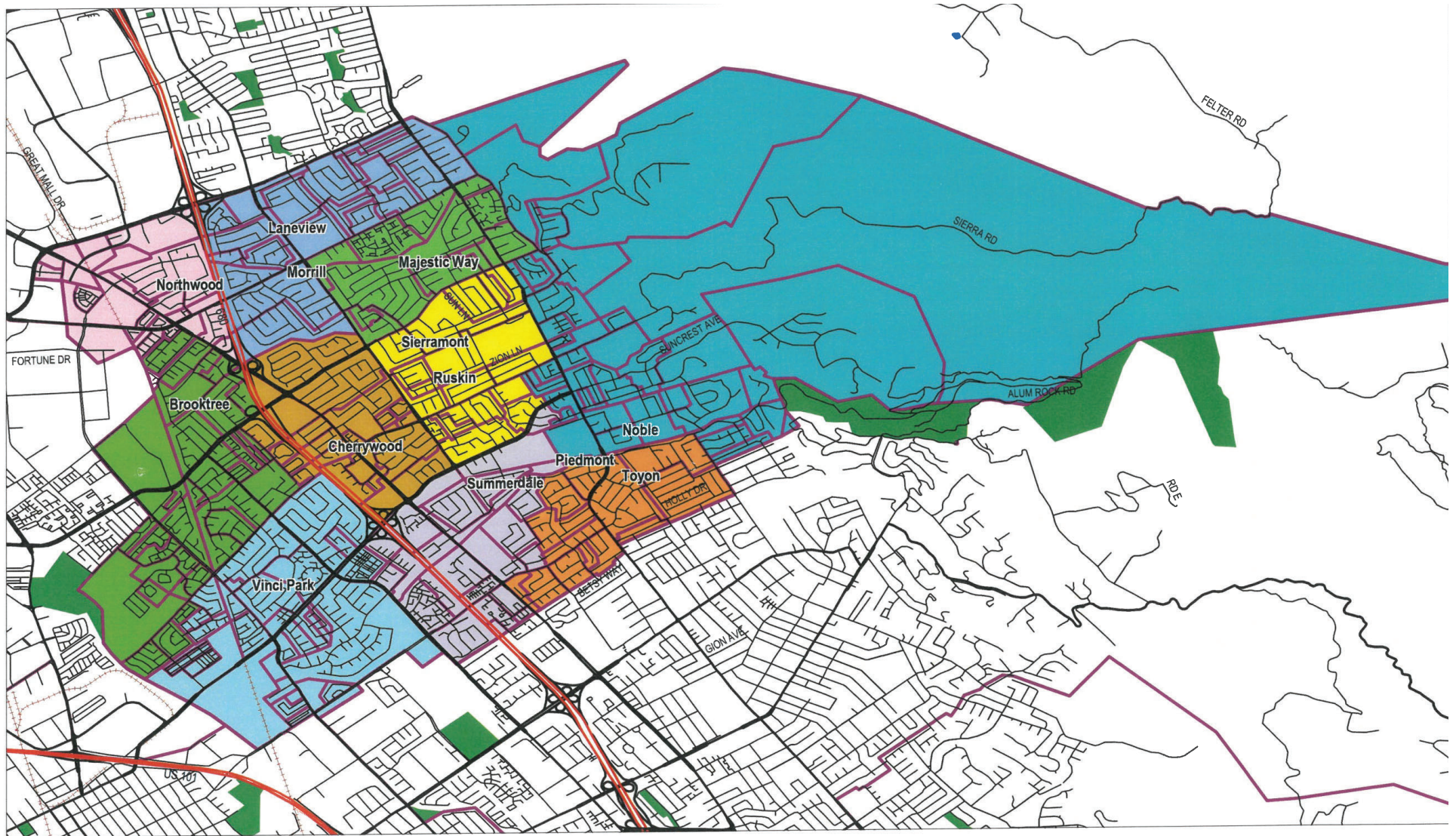




Existing and Proposed Berryessa Union School District  
School Attendance Boundary Maps







Not To Scale

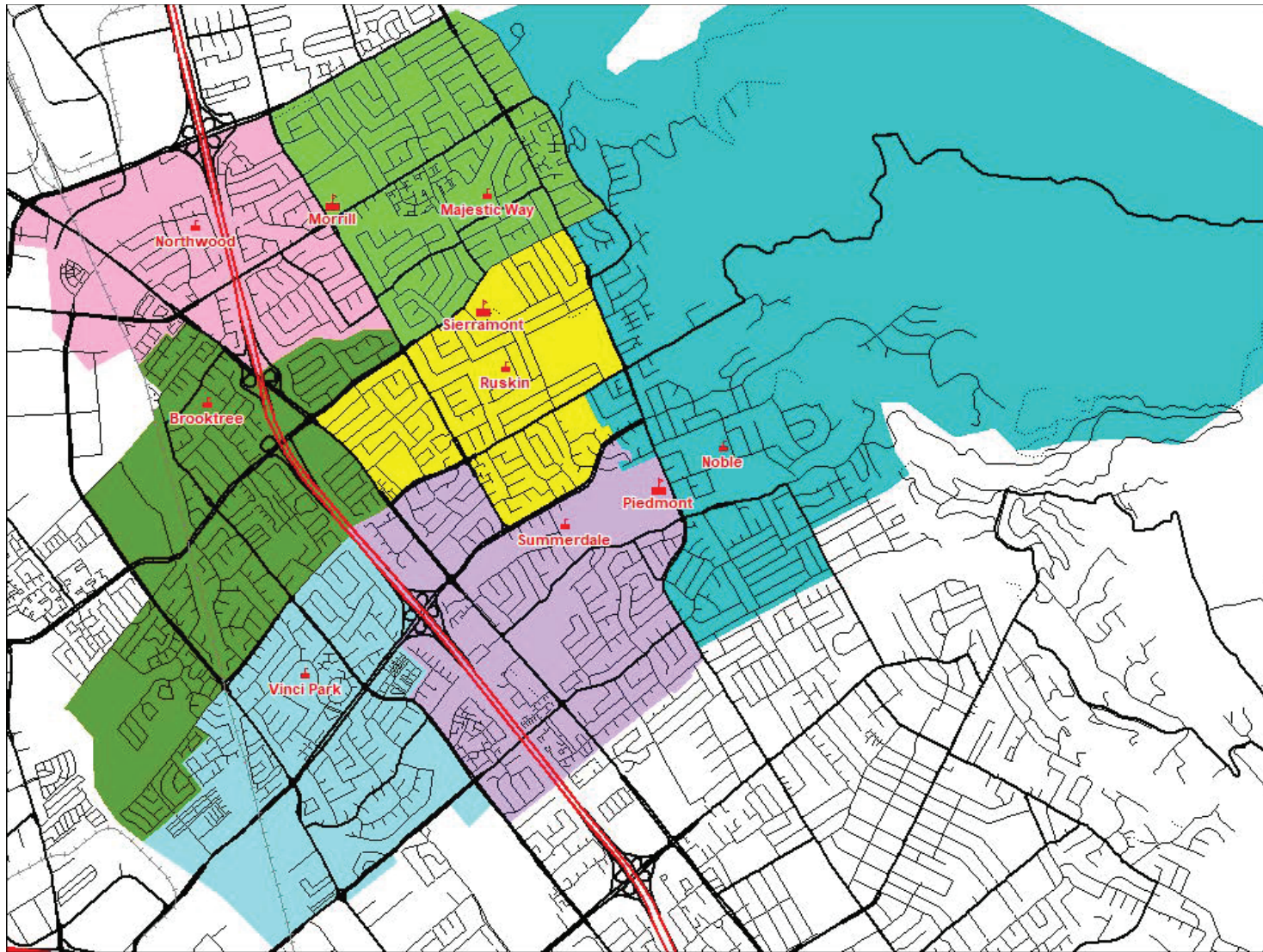
Source: Berryessa Union School District



Figure 1  
Existing School Attendance Boundary

Berryessa Union School District Elementary School Closure  
and Consolidation and Attendance Boundary Changes





Not To Scale

Source: Berryessa Union School District



## Figure 2 Proposed School Attendance Boundary

Berryessa Union School District Elementary School Closure  
and Consolidation and Attendance Boundary Changes

School Boundary Information  
Wednesday, February 12, 2025 Presentation







# **School Boundary Additional Information**

---

**Wednesday, February 12, 2025**





Pathway to the Future  
Since 1855

# Information Requested from Board Study Session held on January 29, 2025



## Portables at Northwood

**Can portables be added at Northwood? If so, how many?**

Yes, portables can be added to Northwood. Based on current infrastructure, a maximum of three portables can be added.

Estimated cost: \$940K



# Portables at Northwood

Timeline to add three portables if eligible for a California Geological Survey waiver:

Task Name	Duration	Start	Finish
<b>PORTABLES AT NORTHWOOD - CGS WAVIER</b>	<b>178 days</b>	<b>Mon 2/10/25</b>	<b>Wed 8/6/25</b>
DSA Pre-meeting (CGS Review and Fire Hydrant)	14 days	Mon 2/10/25	Sun 2/23/25
Design	45 days	Thu 2/13/25	Sat 3/29/25
Fire Hydrant Design	30 days	Mon 2/24/25	Tue 3/25/25
Geo-tech Report	50 days	Mon 2/24/25	Mon 4/14/25
City Fire Hydrant Permit	90 days	Wed 3/26/25	Mon 6/23/25
CGS Waiver	30 days	Tue 4/15/25	Wed 5/14/25
DSA	2 days	Thu 5/15/25	Fri 5/16/25
Bid	34 days	Fri 4/25/25	Wed 5/28/25
Award	1 day	Wed 6/18/25	Wed 6/18/25
Construction	35 days	Sat 6/28/25	Fri 8/1/25
Closeout	5 days	Sat 8/2/25	Wed 8/6/25



## Portables at Northwood

Timeline to add three portables if NOT eligible for a California Geological Survey waiver:

Task Name	Duration	Start	Finish
<b>PORTABLES AT NORTHWOOD - CGS FULL REVIEW</b>	<b>218 days</b>	<b>Mon 2/10/25</b>	<b>Mon 9/15/25</b>
DSA Pre-meeting (CGS Review and Fire Hydrant)	14 days	Mon 2/10/25	Sun 2/23/25
Design	45 days	Thu 2/13/25	Sat 3/29/25
Fire Hydrant Design	30 days	Mon 2/24/25	Tue 3/25/25
Geo-tech Report	50 days	Mon 2/24/25	Mon 4/14/25
City Fire Hydrant Permit	90 days	Wed 3/26/25	Mon 6/23/25
CGS Review	90 days	Tue 4/15/25	Sun 7/13/25
DSA	2 days	Mon 7/14/25	Tue 7/15/25
Bid	34 days	Tue 6/24/25	Sun 7/27/25
Award	1 day	Mon 7/28/25	Mon 7/28/25
Construction	35 days	Thu 8/7/25	Wed 9/10/25
Closeout	5 days	Thu 9/11/25	Mon 9/15/25

# Interior Doors at Summerdale



**Can interior doors be added in the pods at Summerdale?**

Yes, interior doors can be added to the pods at Summerdale with ADA upgrades to the outdoor classroom entrances.

Estimated cost: \$1.43M

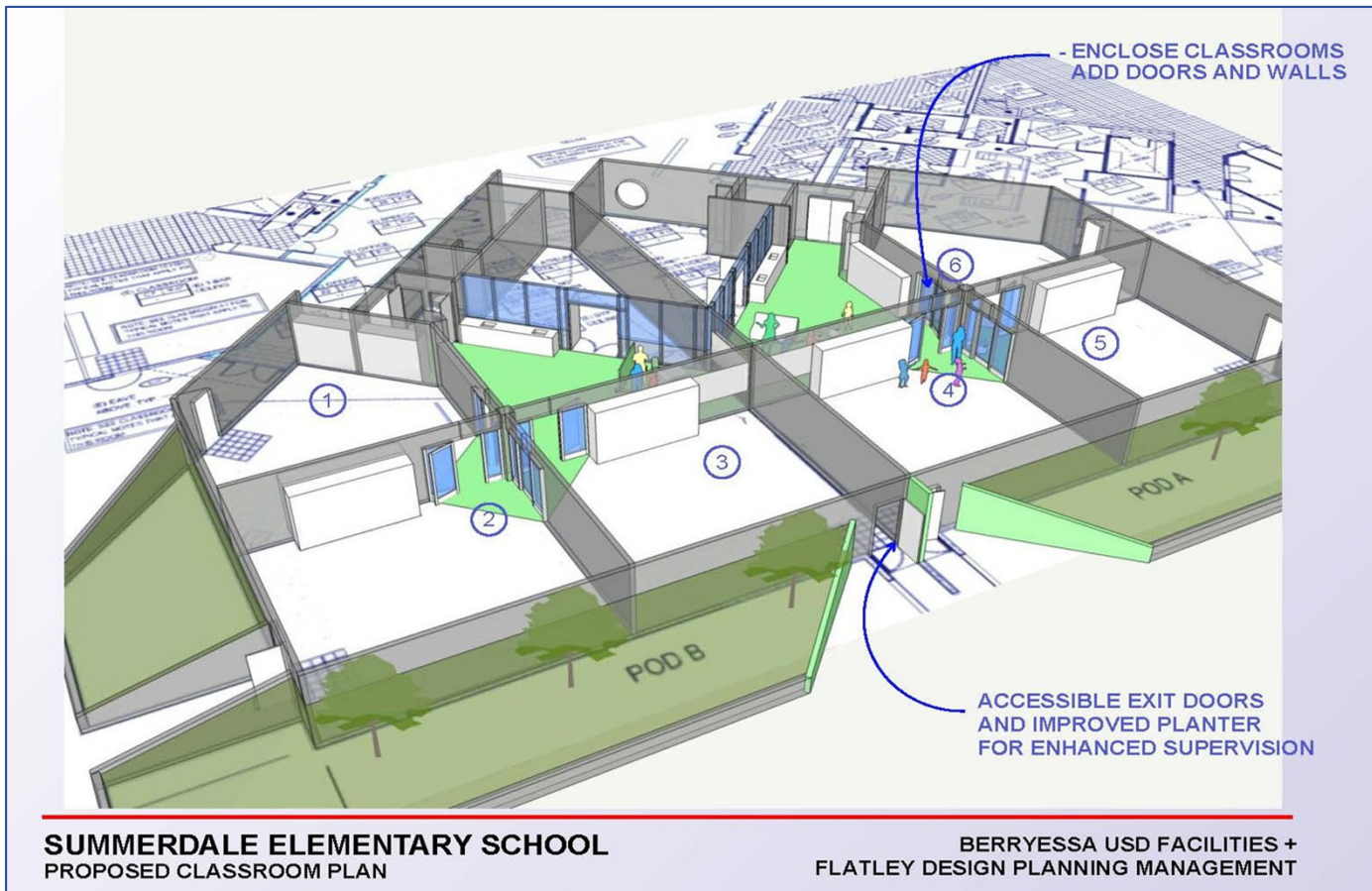


# Interior Doors at Summerdale

Timeline to add interior doors:

Task Name	Duration	Start	Finish
<b>INTERIOR DOORS AT SUMMERDALE</b>	<b>534 days</b>	<b>Thu 2/13/25</b>	<b>Fri 7/31/26</b>
Design	130 days	Thu 2/13/25	Sun 6/22/25
DSA	110 days	Mon 6/23/25	Fri 10/10/25
Bid	34 days	Sat 10/11/25	Thu 11/13/25
Award	1 day	Fri 11/14/25	Fri 11/14/25
Construction	42 days	Mon 6/15/26	Sun 7/26/26
Closeout	5 days	Mon 7/27/26	Fri 7/31/26

# Interior Doors at Summerdale





# Ruskin Boundary Expansion/Grandfathering



**Can Ruskin's proposed boundary be expanded to include students proposed to go to Summerdale?**

No, there is not classroom capacity at Ruskin to include that area for all grade levels.

There is capacity to allow the 12 current 4th grade students to be grandfathered in to attend Ruskin for 5th grade.



# Revised Program Relocations



Program	No. of Classrooms	Current Location	2025-26 Location
Mandarin Immersion	12	Cherrywood	Ruskin (12)
SDC Preschool	6	Toyon	Brooktree (1) Majestic Way (1) Noble (1) Summerdale (1) Vinci Park (2)
SDC - Autism	3	Laneview	Northwood (3)
SDC - Autism	1	Toyon	Summerdale (1)
SDC - Mild/Moderate	2	Cherrywood & Ruskin	Vinci Park (2)
SCCOE SPED Programs	2	Toyon	Summerdale (2)

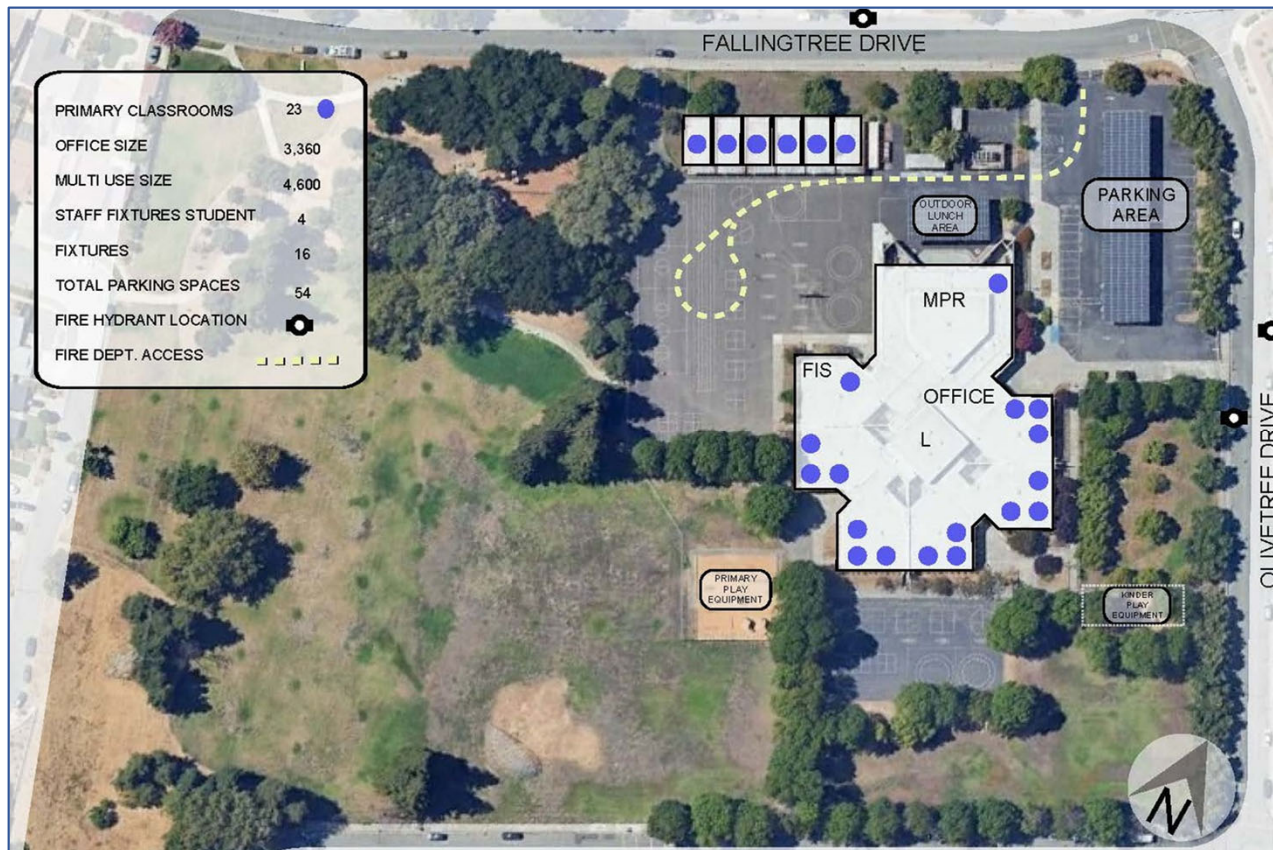
# Brooktree



Projected Number of Students: 446

Special Programs:

- SDC AUT  
PreSchool (1)
- SDC ID (1)
- SDC AUT K - 5 (3)



# Majestic Way



Projected Number of  
Students: 568

Special Programs:

- SDC Preschool (1)
- SDC Mild/Moderate (2)





# Noble



Projected Number of Students: 495

## Special Programs:

- SDC Preschool (1)
- SDC Mild/Moderate (2)
- Parent Participation Program(4)

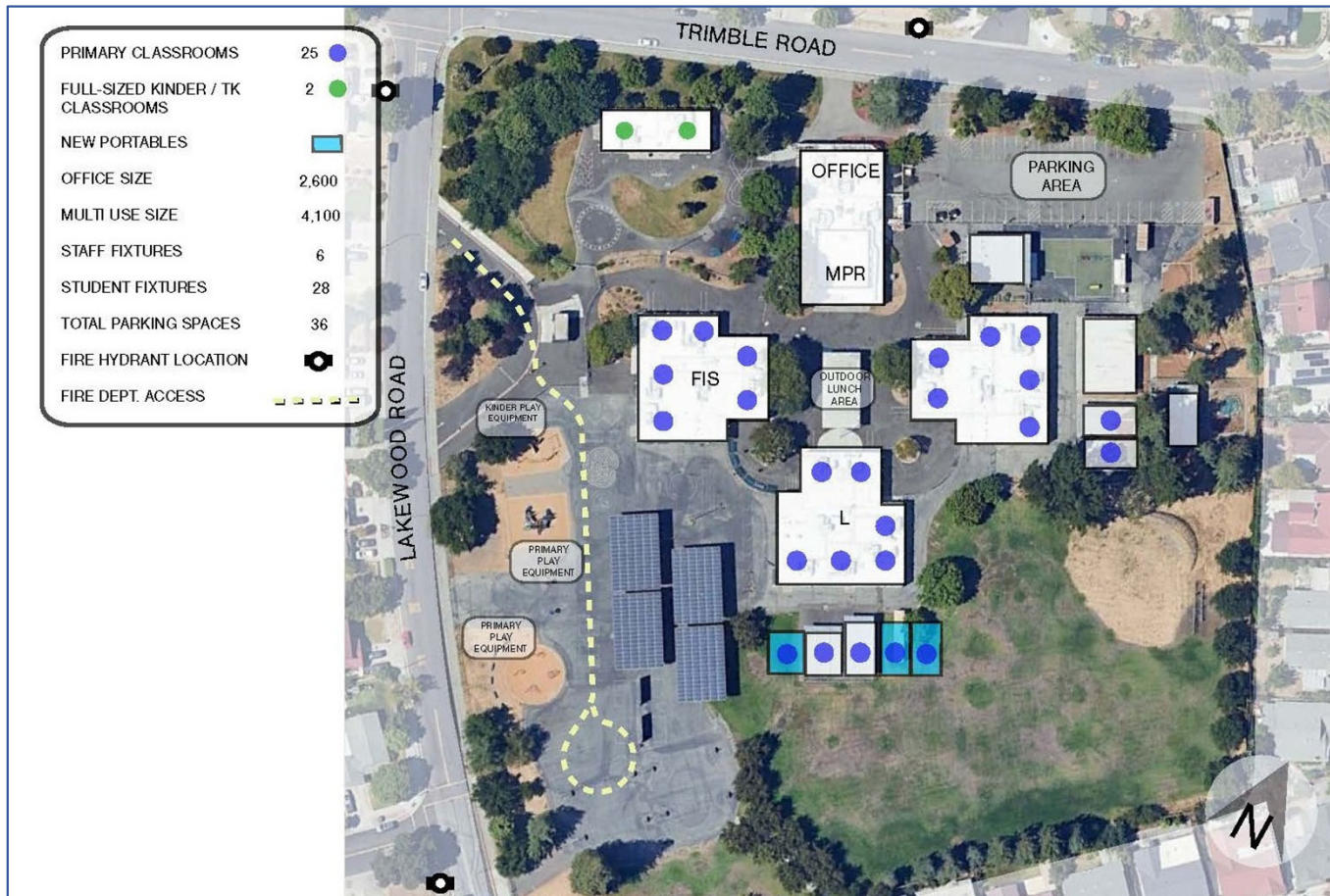
# Northwood



Projected Number of Students: **587**

Special Programs:

- **SDC AUT (3)**
- **Preschool Assessment Center**





# Ruskin



Projected Number of Students: 691

Special Programs:

- Mandarin Immersion (12)
- Science lab and gym maintained



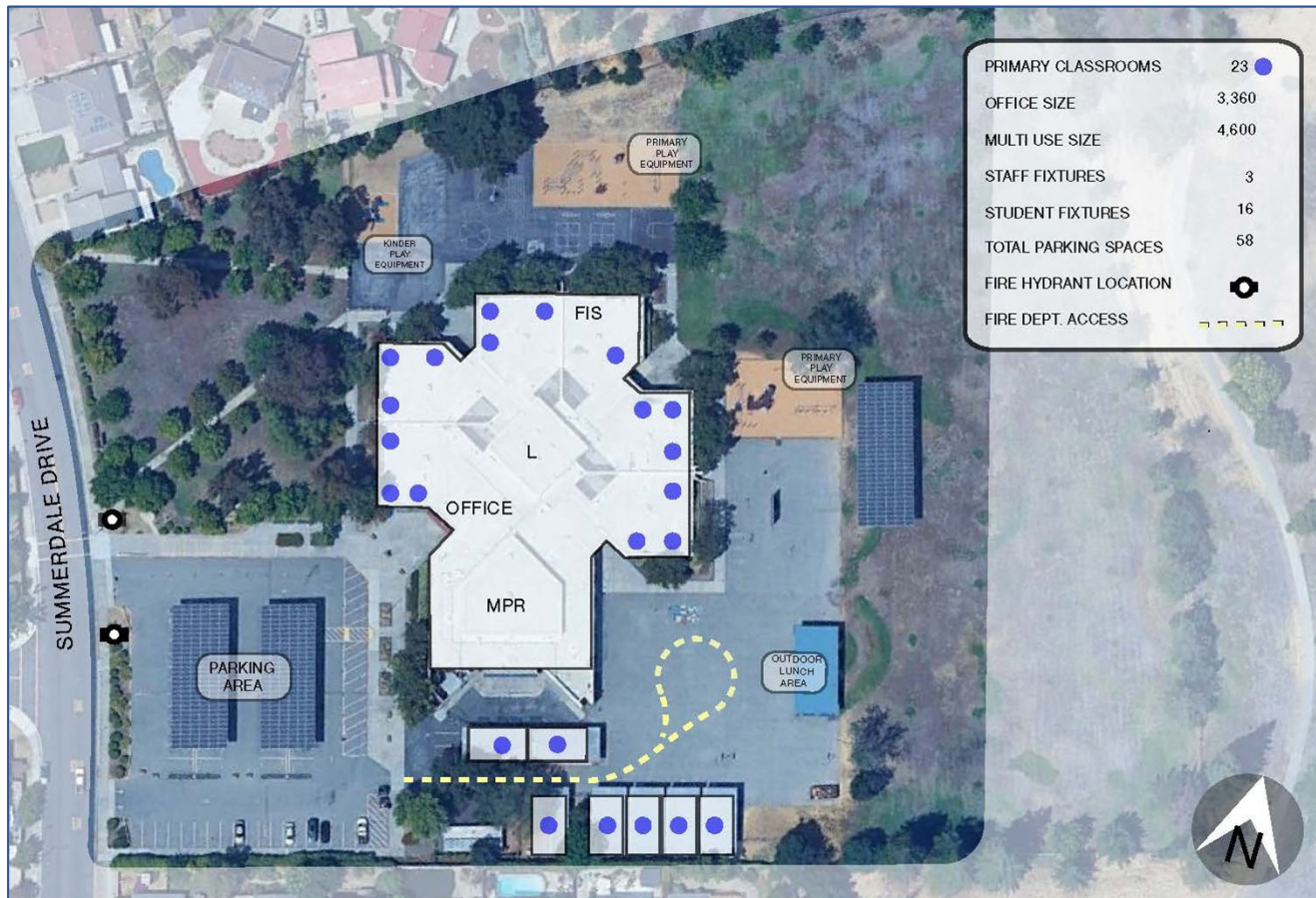
# Summerdale



Projected Number of Students: **462**

Special Programs:

- SDC AUT Preschool (1)
- **SDC AUT (1)**
- **SDC SCCOE Program (2)**





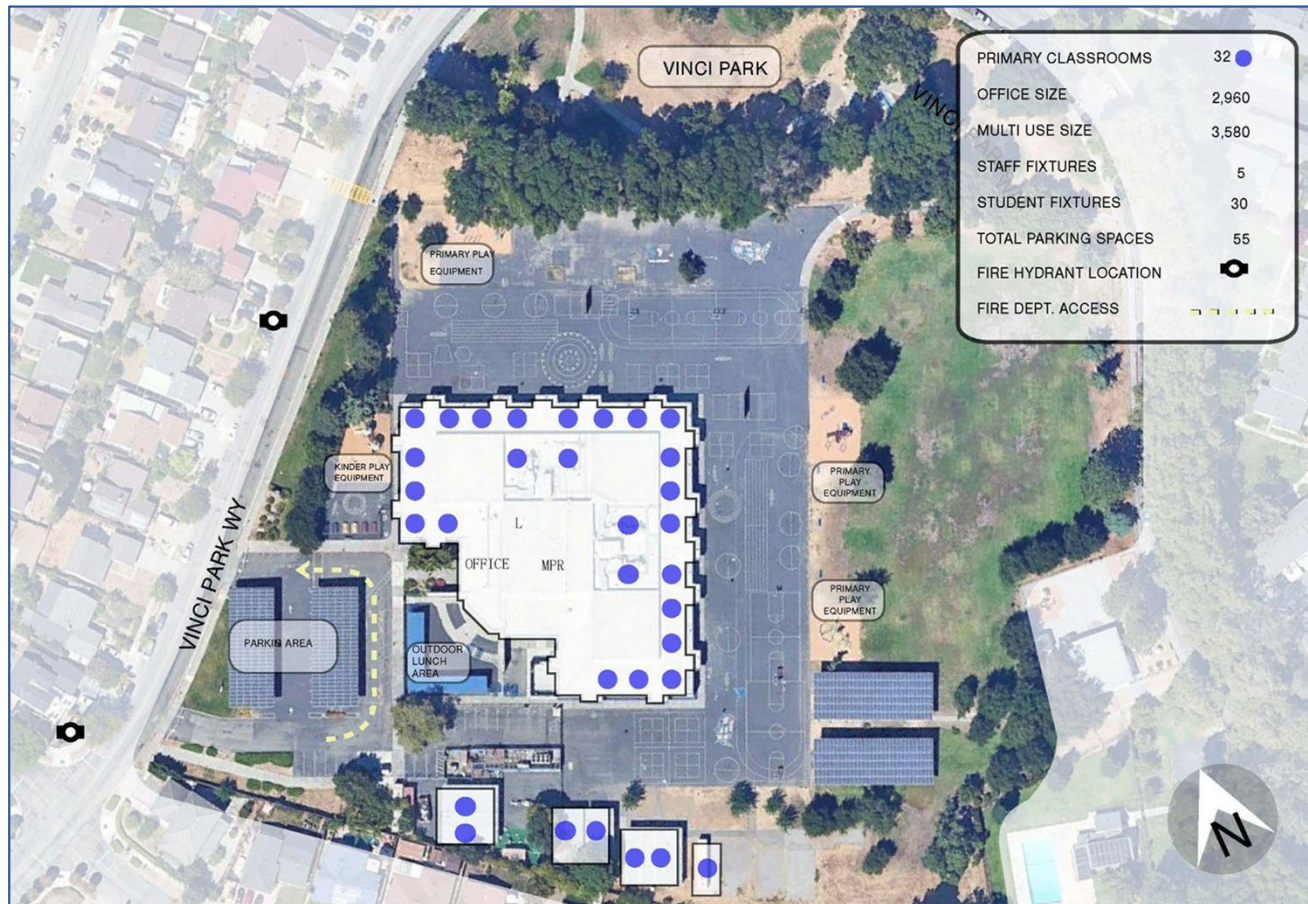
# Vinci Park



Projected Number of Students: **513**

Special Programs:

- SDC Preschool (2)
- SDC Mild/Moderate (2)







Pathway to the Future  
Since 1855

# Questions...

Hexagon Transportation Consultants VMT Study for  
Berryessa Union School District







# HEXAGON TRANSPORTATION CONSULTANTS, INC.

---

February 10, 2025

Ms. Teri Wissler Adam  
EMC Planning Group  
601 Abrego Street,  
Monterey, CA 93940

***Re: VMT Study for Berryessa Union School District***

Dear Ms. Adam:

Hexagon Transportation Consultants, Inc. has completed a transportation impact assessment of the planned school consolidation plan for the Berryessa Union School District. We understand that the district is closing Cherrywood Elementary School at 2550 Greengate Dr, Toyon Elementary School at 995 Bard St, and Laneview Elementary School at 2095 Warmwood Ln. following the conclusion of the 2024-25 school year.

It is also our understanding that the elementary schools that will be receiving general students from the closing schools will include Northwood, Majestic Way, Brooktree, Ruskin, Summerdale, and Noble elementary schools. For this study these schools will be categorized as "Receiving Schools." Vinci Park will not be expanding its attendance boundary but will be accepting students from Special Day Class (SDC) programs, for the purpose of this study this school will be categorized as "Other Schools."

## **Background**

The purpose of this report is to analyze the potential transportation impact of the School Consolidation Plan. Specifically, this analysis studies the impact on vehicles miles traveled (VMT) as required by the California Environmental Quality Act (CEQA). The City of San Jose specifically excludes public schools from VMT analysis. The San Jose policy notwithstanding, this report analyzes VMT for the school closure plan.

## **San Jose VMT Policy**

The City of San Jose lays out in its VMT policy that "Public facilities that are publicly-owned or controlled, [including public schools] are located within established communities and serve local needs... If a public facility is determined to be local serving, the project would not require a detailed CEQA transportation analysis." Given that all the schools involved in the consolidation plan are public, this exemption from further analysis would apply.

## **Definition of VMT for Consolidation Plan.**

VMT is defined as the number of trips associated with each school multiplied by the length of each trip. VMT is typically analyzed on a daily basis. The trips generated by each school include trips to and from the school by faculty and staff as well as students being dropped off and picked up. VMT is a measure of the burden placed on the transportation system to move vehicles and is also a measure of the greenhouse gas emissions attributable to motor vehicles.



## Methodology

There are three data points needed to calculate VMT for this analysis: number of students, number of trips generated by each of the closing schools, and the average distance to school for students. Enrollment data was gathered for each of the schools in the district using the California Department of Education's Data Quest webpage. The data was gathered for every year between 1999-2000 and 2023-24 (Table 1). The enrollment figures were used to calculate the estimated number of trips generated by the schools using the Institute of Transportation Engineers (ITE) Trip Generation Manual, which indicates that an elementary school generates an average of 2.27 trips per student per day. To determine the average distance to school without a map of student population, we used the uniform residential density of the land contained within the elementary school boundaries being studied to assume that the student population is just as uniformly spread across the district. Ten "control points" were evenly distributed across each elementary school's boundary (Figure 3). The shortest driving route between each of these control points and their corresponding elementary school was measured. Next, the same control point was used to measure the distance from each control point to the new school it is assigned to under the revised boundary map (Figure 4).

## Analysis

For each of the closing schools, the average distance to school for relocated students would increase (Table 4). At Cherrywood the average distance would increase from 0.63 miles to 1.12 miles. For Toyon the distance would increase from 0.73 miles to 1.10 miles. At Laneview the average distance would increase from 0.69 miles to 1 mile. In isolation this may increase VMT, however, the large decrease in elementary school enrollment in the District as a whole, compared to the baseline, offsets the VMT increases at some schools.

District-wide enrollment at the elementary school level has declined from 5,790 students in the 1999-00 school year to 4,025 students in 2023-24 (Table 2). While the average distance to school for most students has remained consistent, the increase in distance for students at the closing schools has slightly raised the district-wide elementary school average from 0.79 miles in 1999-00 to 0.91 miles under the consolidation plan. Despite this, the significant drop in total enrollment has resulted in fewer vehicle trips to and from school, leading to a district-wide 20.2% reduction in VMT compared to the 1999-00 baseline (Table 6).

Looking at the closing schools separately, Toyon Elementary is projected to see VMT decrease by 27%, while Laneview Elementary is expected to see a nearly 10% reduction compared to historic levels. Due to the combined impact of the largest increase in average distance to school and a relatively minor decrease in enrollment, Cherrywood Elementary is estimated to experience a 63% increase in VMT under the consolidation plan. This combines to an expected 6.7% increase in the VMT generated by the closing schools (Table 5). The slight increase in VMT from the closing schools however is offset by the previously mentioned 20.2% overall decrease in VMT generated by district elementary schools.

### **Other Modes May Decrease VMT Further.**

The new average distance to school for students affected by the consolidation plan is around a mile. This distance is very walkable or bikeable. Several schools have shorter routes for pedestrians through the use of cut-throughs, walking trails, or pedestrian bridges. For example



former Laneview students can go directly to Majestic Way elementary on foot using the pedestrian bridge over Berryessa creek on Messina Drive, about halfway between the nearest vehicle bridges on Piedmont Road and Morill Avenue. With the two vehicle bridges being nearly a mile apart this bridge makes the walk to school up to a half mile shorter than driving. There is also a bridge across I-680 on Capewood Lane connecting to Northwood for former Laneview students, or the bridge over Sierra Creek on Tulare Drive that connects Ruskin to former Cherrywood students, just to name a few. Walking or biking may be an attractive option that could be made more attractive and effective at decreasing VMT through the continued use of safe routes to school programs that promote walking and biking to school.

### **In Summary**

The School Consolidation Plan results in a nuanced impact on vehicle miles traveled (VMT). While there is expected to be a decrease in VMT by students from Laneview and Toyon, Cherrywood's VMT impact is expected to increase. This increase is counterbalanced by broader district-wide elementary school enrollment declines. The significant reduction in total student enrollment over the past 25 years has resulted in a net district-wide decrease in VMT of 20.2% compared to the 1999-00 baseline. This decrease in VMT could be pushed further by leveraging, through Safe Routes to School programs, the existing pedestrian infrastructure in the area that often makes walking or biking a shorter option than driving.

We appreciate the opportunity to provide this analysis. If you have any questions, please do not hesitate to call.

Sincerely,

**HEXAGON TRANSPORTATION CONSULTANTS, INC.**

A handwritten signature in black ink, appearing to read "Gary K. Black".

Gary K. Black  
President

A handwritten signature in black ink, appearing to read "Ethan Heckman".

Ethan Heckman  
Planner



**Table 1**  
**Enrollment Data From Closing Schools 1999-2024**

Enrollment Last 24 Years			
School	Cherrywood	Toyon	Laneview
1999-00	570	539	594
2000-01	539	501	564
2001-02	521	463	550
2002-03	523	454	540
2003-04	546	459	530
2004-05	536	457	543
2005-06	519	467	549
2006-07	482	450	549
2007-08	514	401	538
2008-09	541	386	548
2009-10	545	380	529
2010-11	540	360	500
2011-12	502	333	511
2012-13	475	341	486
2013-14	451	341	453
2014-15	423	321	435
2015-16	348	311	393
2016-17	348	311	393
2017-18	314	320	381
2018-19	391	292	373
2019-20	434	299	349
2020-21	448	268	334
2021-22	445	320	241
2022-23	497	240	343
2023-24	524	258	369

**Table 2**  
**Enrollment and ITE Trip Generation Numbers**

	Change in Enrollment <sup>1</sup>		ITE Trips Gen.	
	1999-00	2023-24	1999-00	2023-24
Cherrywood	570	524	1293.9	1189
Toyon	539	258	1223.6	586
Laneview	594	369	1348.4	838
Closing Schools	1703	1151	3865.9	2613
District Total	5790	4025	13143	9137
1. All enrollment numbers gathered from California Department of Education's Data Quest database				

**Table 3**  
**Current Distance to School Calculations**

Current Distance to School (Miles)											
Control Point	Closing Schools			Receiving Schools						Other	
	Cherry wood	Toyon	Lane view	North wood	Majestic Way	Brook tree	Ruskin	Summer dale	Noble	Vinci Park	
	1	0.9	1.4	1	0.2	0.5	0.2	0.9	0.7	2.2	0.7
	2	0.9	1.1	1	1.1	0.5	0.6	0.5	1.7	2	0.6
	3	0.5	0.9	0.5	0.6	1.1	0.5	0.4	1.6	1.7	0.8
	4	0.6	0.7	0.5	0.2	0.8	1	0.4	0.9	1.1	0.2
	5	1.1	0.9	0.5	0.9	0.2	1.1	0.4	0.4	1.2	0.8
	6	0.1	0.6	0.2	0.6	1	1.2	1	0.6	0.4	1.1
	7	0.4	0.5	0.4	0.7	0.6	1.5	0.2	0.9	0.7	1.1
	8	0.5	0.5	0.6	0.3	1	2.2	1	1	0.6	1
	9	0.8	0.6	1.1	0.7	0.3	2.1	0.5	0.2	0.3	0.7
10	0.5	0.1	1.1	1	0.4	2.4	0.7	1.3	0.5	0.3	
Average	0.63	0.73	0.69	0.63	0.64	1.28	0.6	0.93	1.07	0.73	
								Overall Average		0.793	

**Table 4**  
**New Distance to School Calculations**

New Distance to School (Miles)											
Control Point	Closing Schools			Receiving Schools						Other	
	Cherry wood	Toyon	Lane view	North wood	Majestic Way	Brook tree	Ruskin	Summer dale	Noble	Vinci Park	
	1	1.2	1.3	0.9	0.2	0.5	0.2	0.9	0.7	2.2	0.7
	2	1.4	1.3	0.6	1.1	0.5	0.6	0.5	1.7	2	0.6
	3	1.2	1.1	1	0.6	1.1	0.5	0.4	1.6	1.7	0.8
	4	0.7	0.7	1.3	0.2	0.8	1	0.4	0.9	1.1	0.2
	5	0.8	1.4	0.9	0.9	0.2	1.1	0.4	0.4	1.2	0.8
	6	1.4	1.2	1.6	0.6	1	1.2	1	0.6	0.4	1.1
	7	1.2	1	0.5	0.7	0.6	1.5	0.2	0.9	0.7	1.1
	8	1.6	1.3	0.7	0.3	1	2.2	1	1	0.6	1
	9	1	0.9	1.3	0.7	0.3	2.1	0.5	0.2	0.3	0.7
10	0.7	0.8	1.2	1	0.4	2.4	0.7	1.3	0.5	0.3	
Average	1.12	1.1	1	0.63	0.64	1.28	0.6	0.93	1.07	0.73	
								Overall Average		0.91	





**Table 5**  
**VMT Calculations for Relocated Students**

	VMT By School						Total Change in VMT	
	Cherrywood		Toyon		Laneview		1999-00	Relocated Students
	1999-00	Relocated Students	1999-00	Relocated Students	1999-00	Relocated Students		
# of Students	570	524	539	258	594	369	1703	1151
ITE Trips	1294	1189	1224	586	1348	838	3866	2613
Avg. Distance	0.63	1.12	0.73	1.10	0.69	1.00	2.05	3.22
VMT	815	1332	893	645	930	838	2639	2814
% Change in VMT:		63.4%		-27.8%		-9.9%		6.7%

**Table 6**  
**VMT Calculations for Entire District**

District-Wide Change in VMT		
	1999-00	Post Consolidatio
# of Students	5790	4025
ITE Trips	13143	9137
Avg. Distance (Mi)	0.79	0.91
VMT	10423	8314
% Change in VMT:		-20.2%

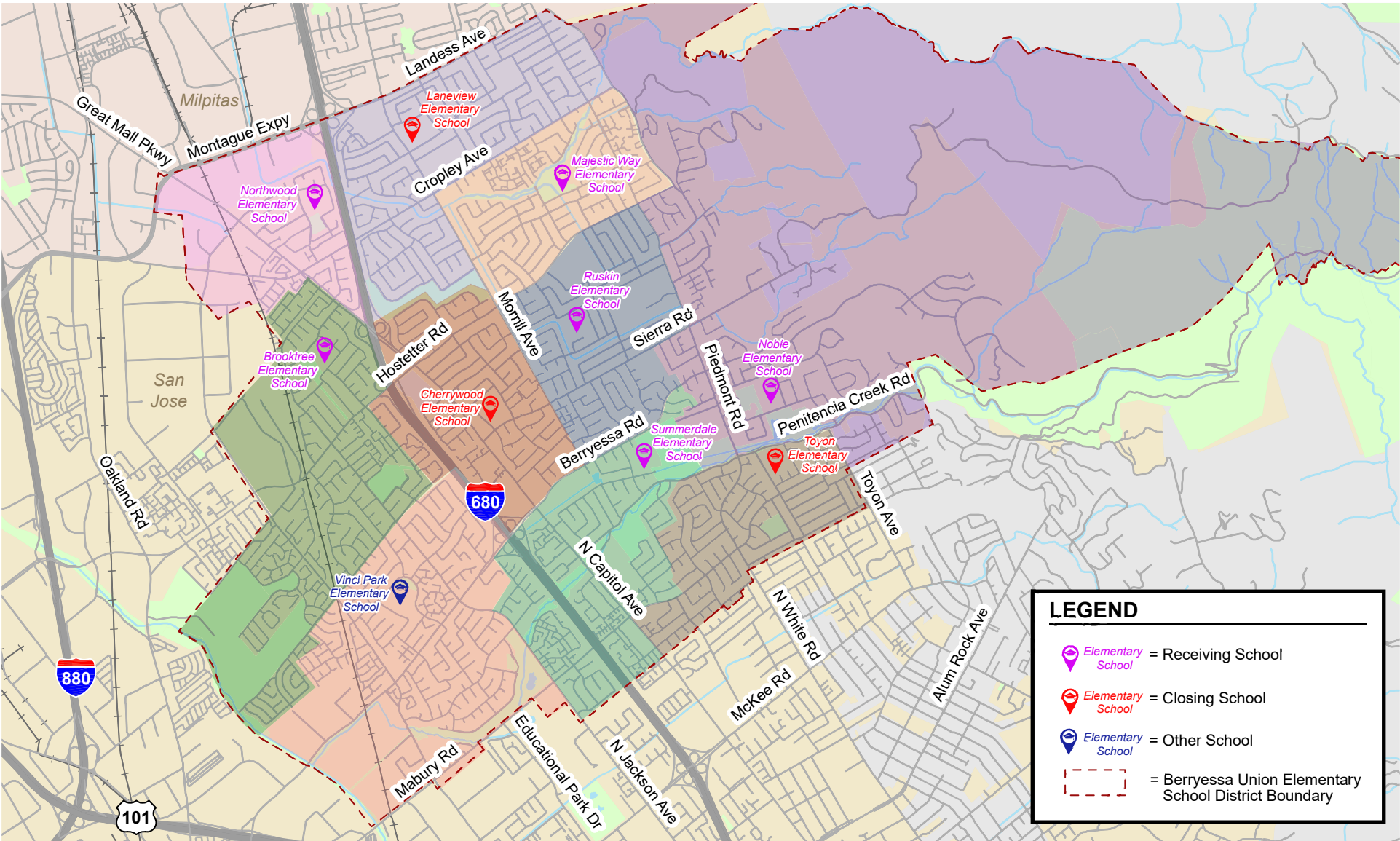


Figure 1  
Current Elementary School Boundary Map

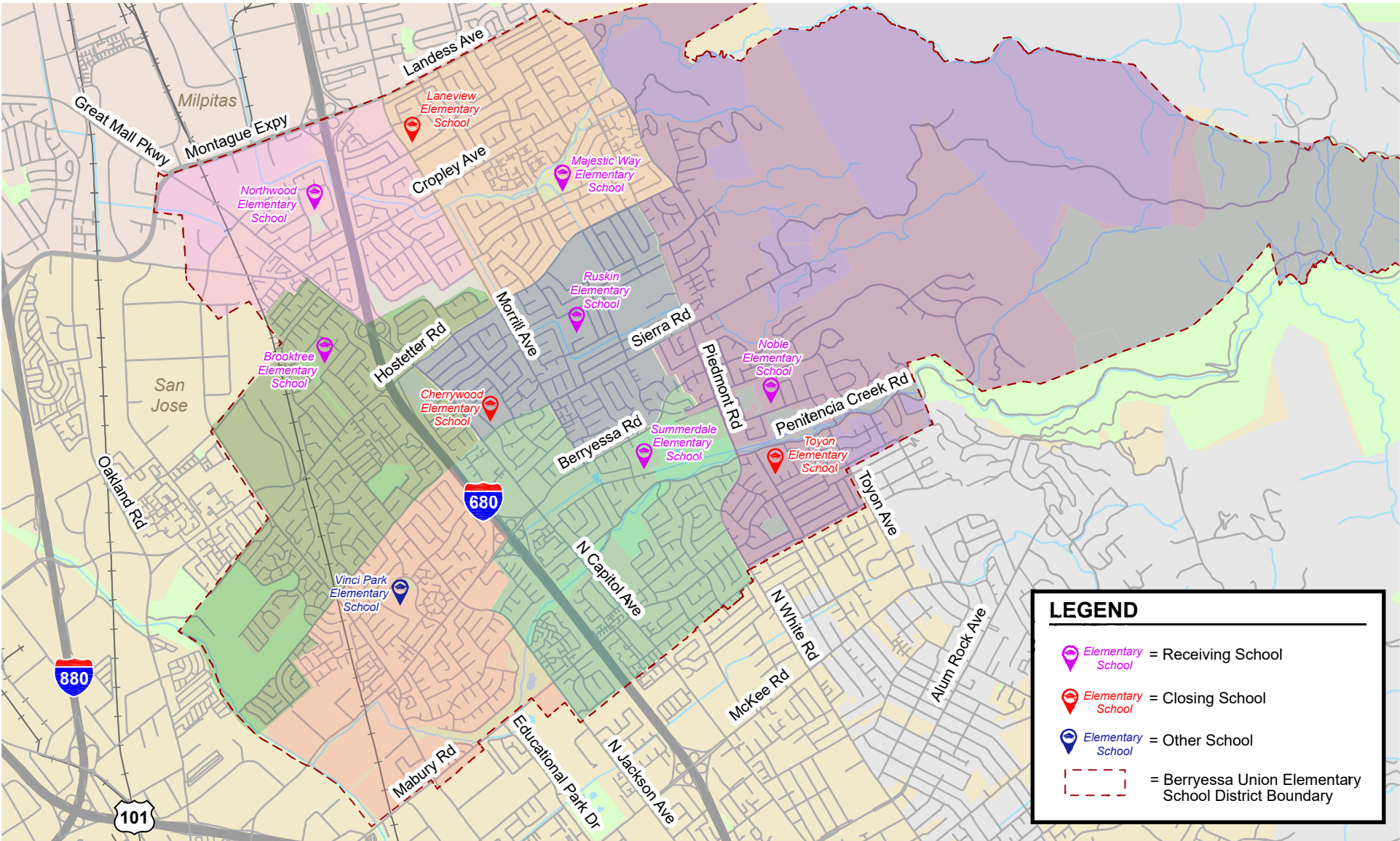


Figure 2  
New Elementary School Boundary Map



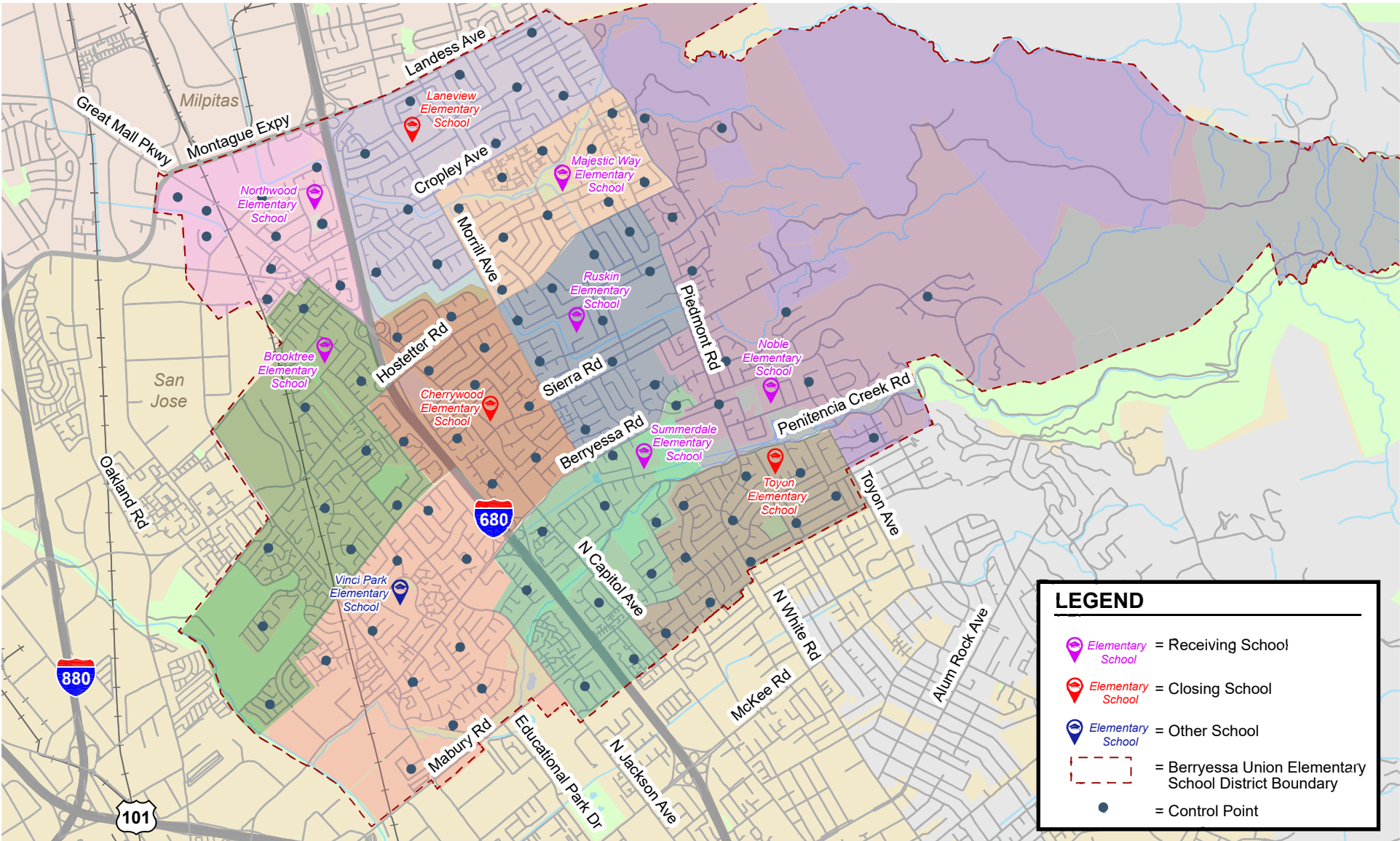


Figure 3  
Current Boundary With Control Points

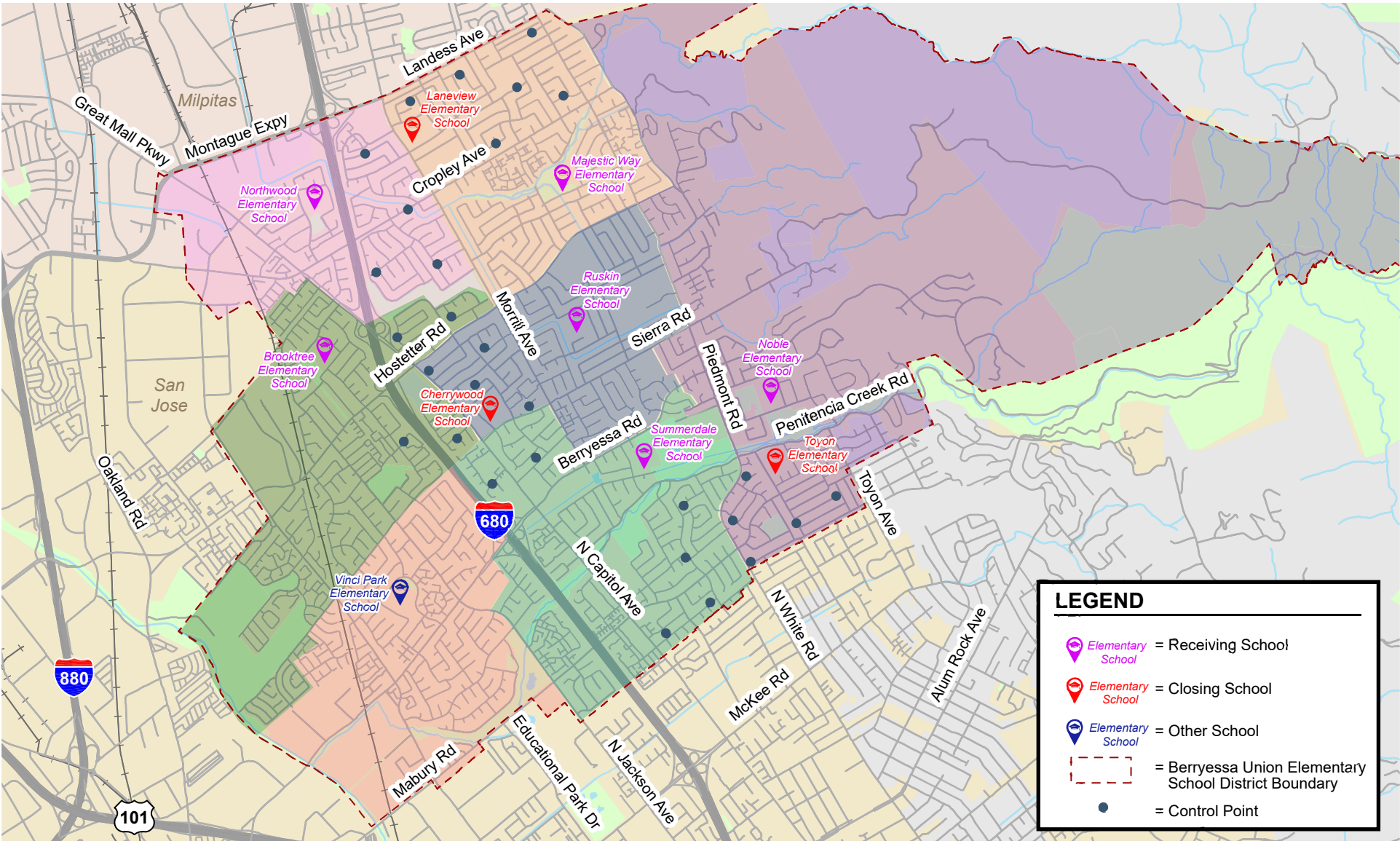


Figure 4  
New Boundary With Control Points