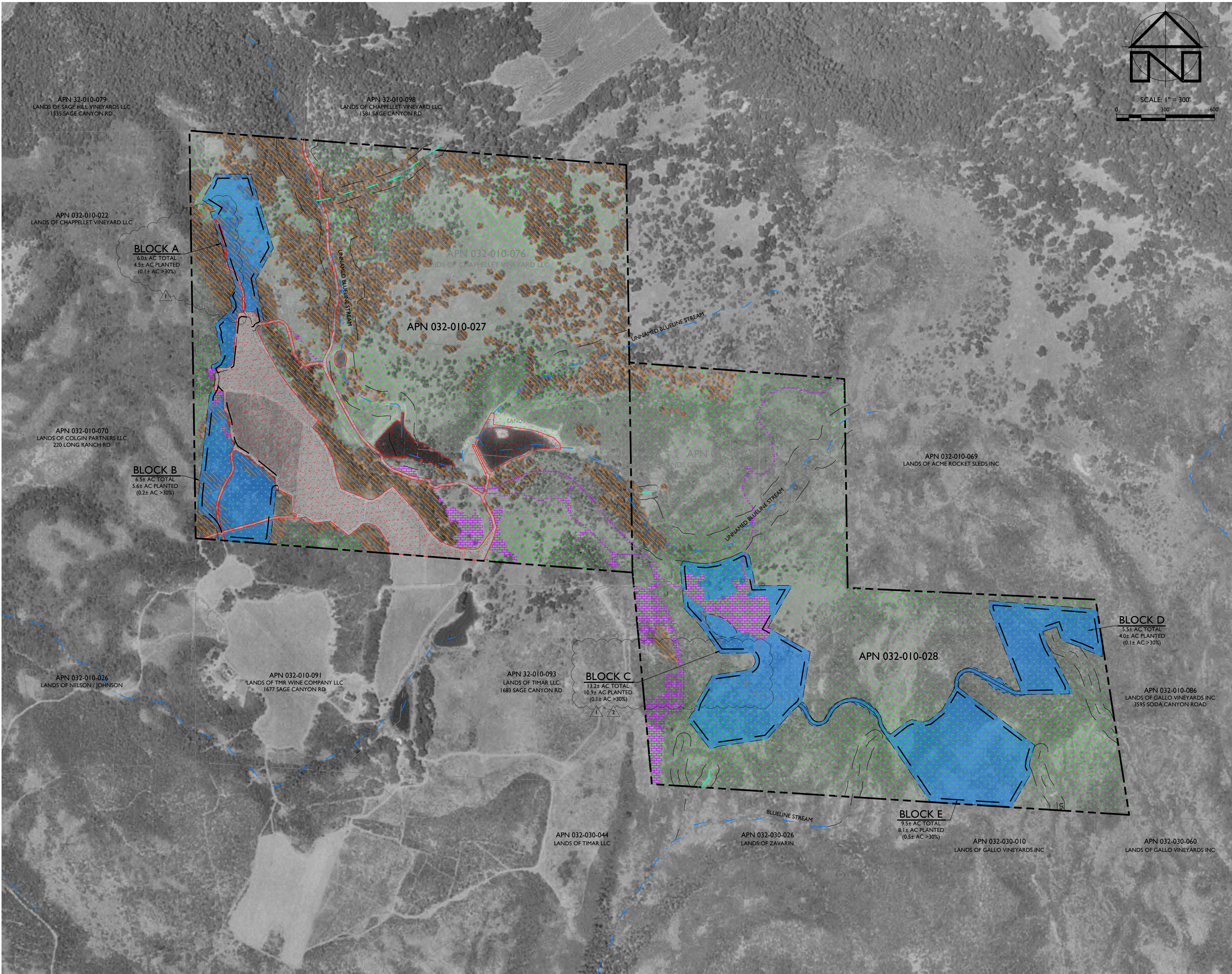


EXHIBIT B-4



VEGETATION RETENTION ANALYSIS - 1993

SCALE: 1" = 300'

NOTES:

1. FADED BACKGROUND REPRESENTS EXISTING TOPOGRAPHIC FEATURES. TOPOGRAPHIC INFORMATION WAS TAKEN FROM THE NAPA COUNTY GEOGRAPHIC INFORMATION SYSTEM DATABASE. APPLIED CIVIL ENGINEERING INCORPORATED ASSUMES NO LIABILITY REGARDING THE ACCURACY OR COMPLETENESS OF THE TOPOGRAPHIC INFORMATION.
2. AERIAL PHOTOGRAPHS WAS OBTAINED FROM THE NAPA COUNTY GEOGRAPHIC INFORMATION SYSTEM DATABASE DIGITAL ORTHOPHOTO QUARTER QUAD CATALOG FROM 1993, DATED JUNE 1, 1993.
3. THE PROPERTY LINES SHOWN ON THESE PLANS DO NOT REPRESENT A BOUNDARY SURVEY. THEY ARE APPROXIMATE AND ARE PROVIDED FOR INFORMATIONAL PURPOSES ONLY.

PROPOSED CONDITIONS
VEGETATION RETENTION ANALYSIS (APN 032-010-027)

	1993 CONDITIONS	REMOVED SINCE 1993 FOR OTHER DEVELOPMENT	TO BE REMOVED WITHIN PROPOSED PROJECT AREA	PROPOSED FOR RETENTION	PERCENT RETAINED
TREES	53.2 ± ACRES	0.1 ± ACRES	4.0 ± ACRES	49.1 ± ACRES	92%
BRUSH / GRASS	79.0 ± ACRES	2.7 ± ACRES	7.2 ± ACRES	69.1 ± ACRES	87%
IMPROVEMENTS	20.6 ± ACRES	-	-	-	-
TOTALS	152.8 ± ACRES	2.8 ± ACRES	11.2 ± ACRES	-	-

PROPOSED CONDITIONS
VEGETATION RETENTION ANALYSIS (APN 032-010-028)

	1993 CONDITIONS	REMOVED SINCE 1993 FOR OTHER DEVELOPMENT	TO BE REMOVED WITHIN PROPOSED PROJECT AREA	PROPOSED FOR RETENTION	PERCENT RETAINED
TREES	3.7 ± ACRES	0	0.2 ± ACRES	3.5 ± ACRES	95%
BRUSH / GRASS	120.0 ± ACRES	6.6 ± ACRES	26.6 ± ACRES	86.8 ± ACRES	72%
IMPROVEMENTS	0 ± ACRES	-	-	-	-
TOTALS	123.7 ± ACRES	6.6 ± ACRES	26.8 ± ACRES	-	-

VEGETATION RETENTION LEGEND:

	(E) TREES - 1993
	(E) BRUSH / GRASS - 1993
	(E) IMPROVEMENTS - 1993
	REMOVED SINCE 1993 FOR OTHER DEVELOPMENT
	TO BE REMOVED WITHIN PROPOSED PROJECT AREA

LEGEND:

	APPROXIMATE PROPERTY LINE
	BLUELINE STREAM
	WATERS OF THE US
	NEW VINEYARD AVENUE
	NEW VINEYARD BLOCK

PREPARED UNDER THE
DIRECTION OF:



DRAWN BY:
PowerCAD LLC

CHECKED BY:
MRM

DATE:
OCTOBER 31, 2024

REVISIONS: BY:
6/19/2024 SMJ
REVISION #1

10/31/2024 SMJ
REVISION #2

JOB NUMBER:
17-141

FILE:
17-141EXH-VEG-1993.DWG

ORIGINAL SIZE:
24" X 36"

SHEET NUMBER: