

**Legend**

Scale = 1:40,000  
Created: 8/3/2023



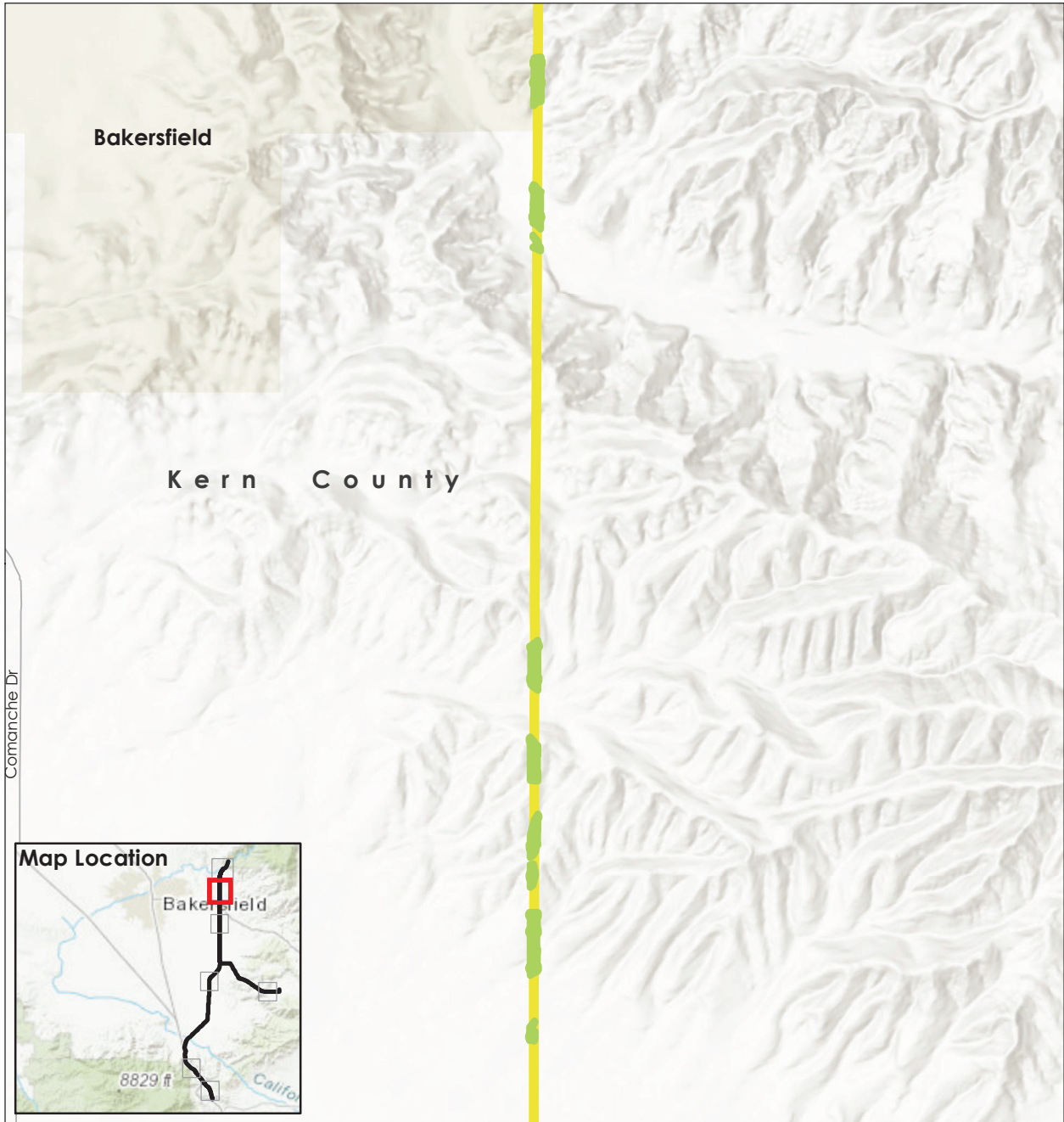
**Project Elements**

- Substation
- Proposed Project Alignment**
- Segment 1

**Sensitive Vegetation Communities**

- Encelia actonii
- Lepidospartum squamatum / ephemeral annuals
- Platanus racemosa - Salix laevigata / Salix lasiolepis - Baccharis salicifolia
- Salix laevigata





**Legend**

Scale = 1:40,000  
Created: 8/3/2023

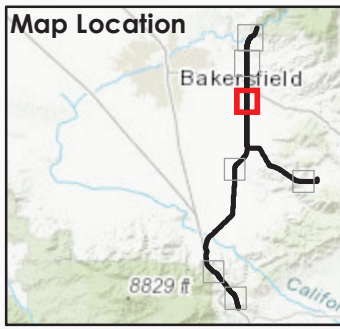
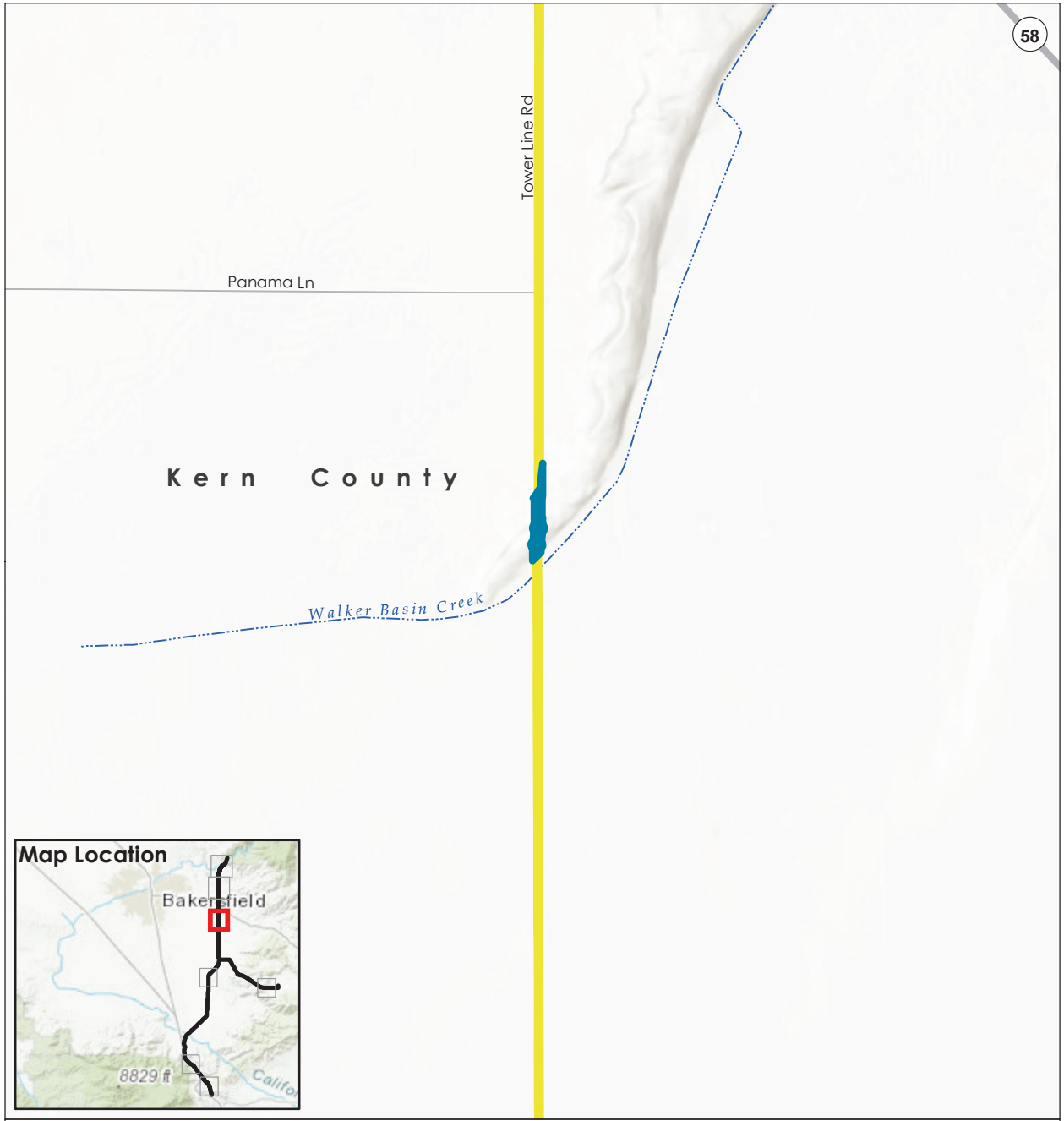
**Project Elements**

- Substation
- Proposed Project Alignment**
- Segment 1

**Sensitive Vegetation Communities**

- *Lepidospartum squamatum* / ephemeral annuals





**Legend**

Scale = 1:33,000  
Created: 8/3/2023



**Project Elements**

- Substation
- Proposed Project Alignment**
- Segment 1

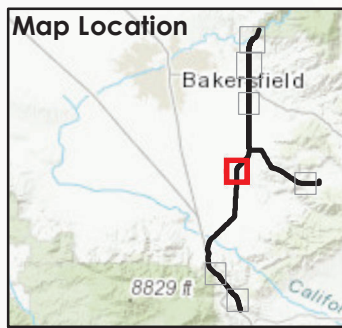
**Sensitive Vegetation Communities**

- Ephedra californica / annual – perennial herb



Kern County

Rancho Dr



**Legend**

Scale = 1:33,000  
Created: 8/3/2023

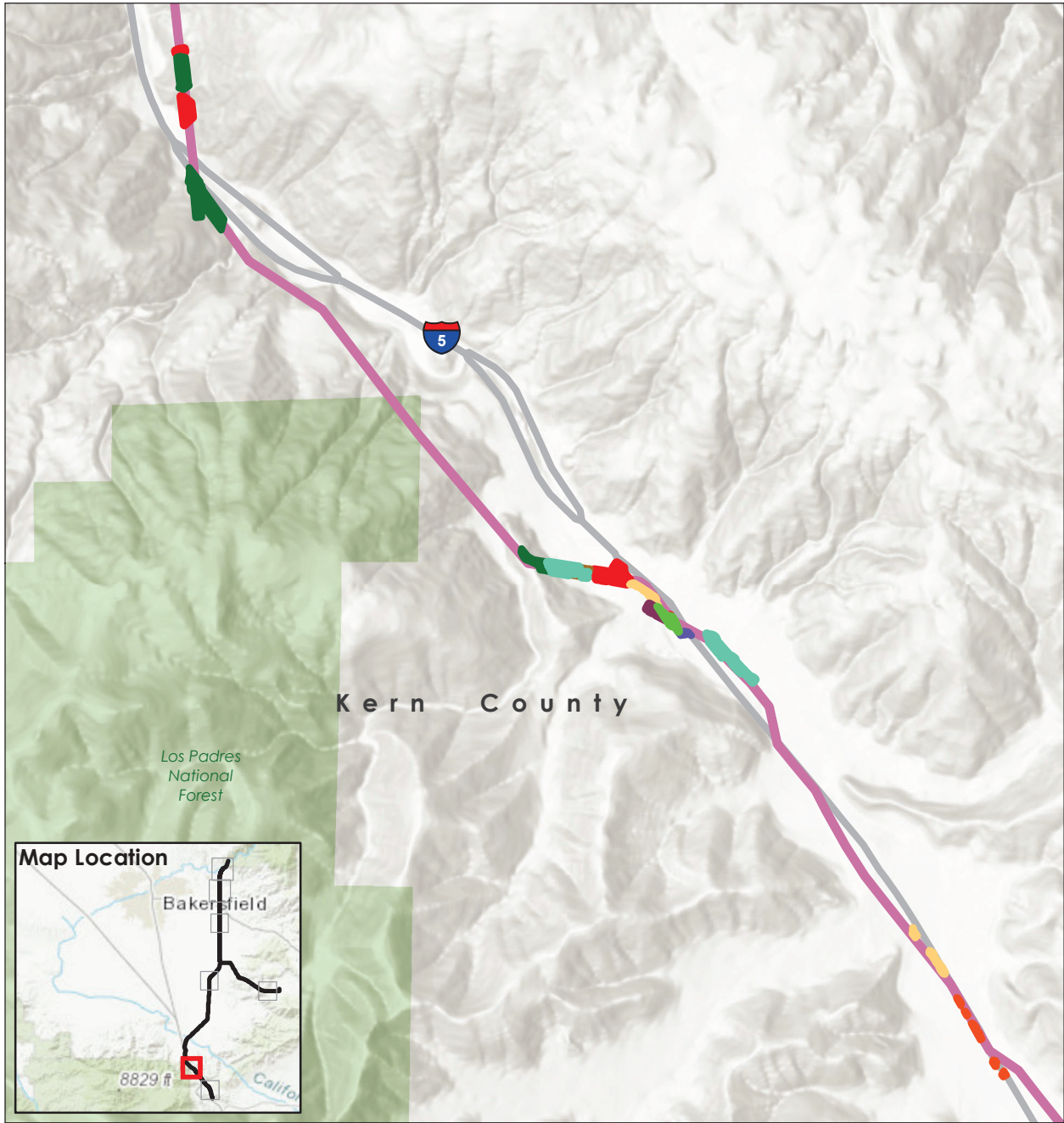
**Project Elements**

- Substation
- Proposed Project Alignment**
- Segment 2

**Sensitive Vegetation Communities**

- *Lepidospartum squamatum* / ephemeral annuals





**Legend**

Scale = 1:33,000  
Created: 8/3/2023



**Project Elements**

- Substation
- Proposed Project Alignment**
- Segment 2

**Sensitive Vegetation Communities**

- Aesculus californica
- Populus fremontii – Salix (laevigata, lasiolepis, lucida ssp. lasiandra)
- Quercus lobata / grass
- Quercus lobata – Salix laevigata Provisional
- Quercus lobata – Salix lasiolepis
- Salix laevigata
- Salix laevigata / Salix lasiolepis Association
- Salix lasiolepis – Salix lucida
- Schoenoplectus americanus / Lepidium latifolium





**Legend**

Scale = 1:34,000  
Created: 8/3/2023



**Project Elements**

- Substation
- Proposed Project Alignment**
- Segment 2
- Segment 3

**Sensitive Vegetation Communities**

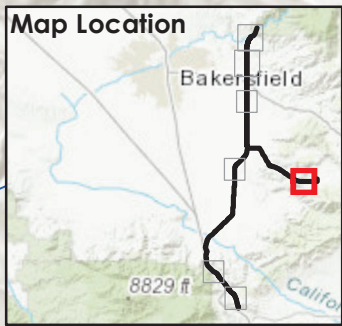
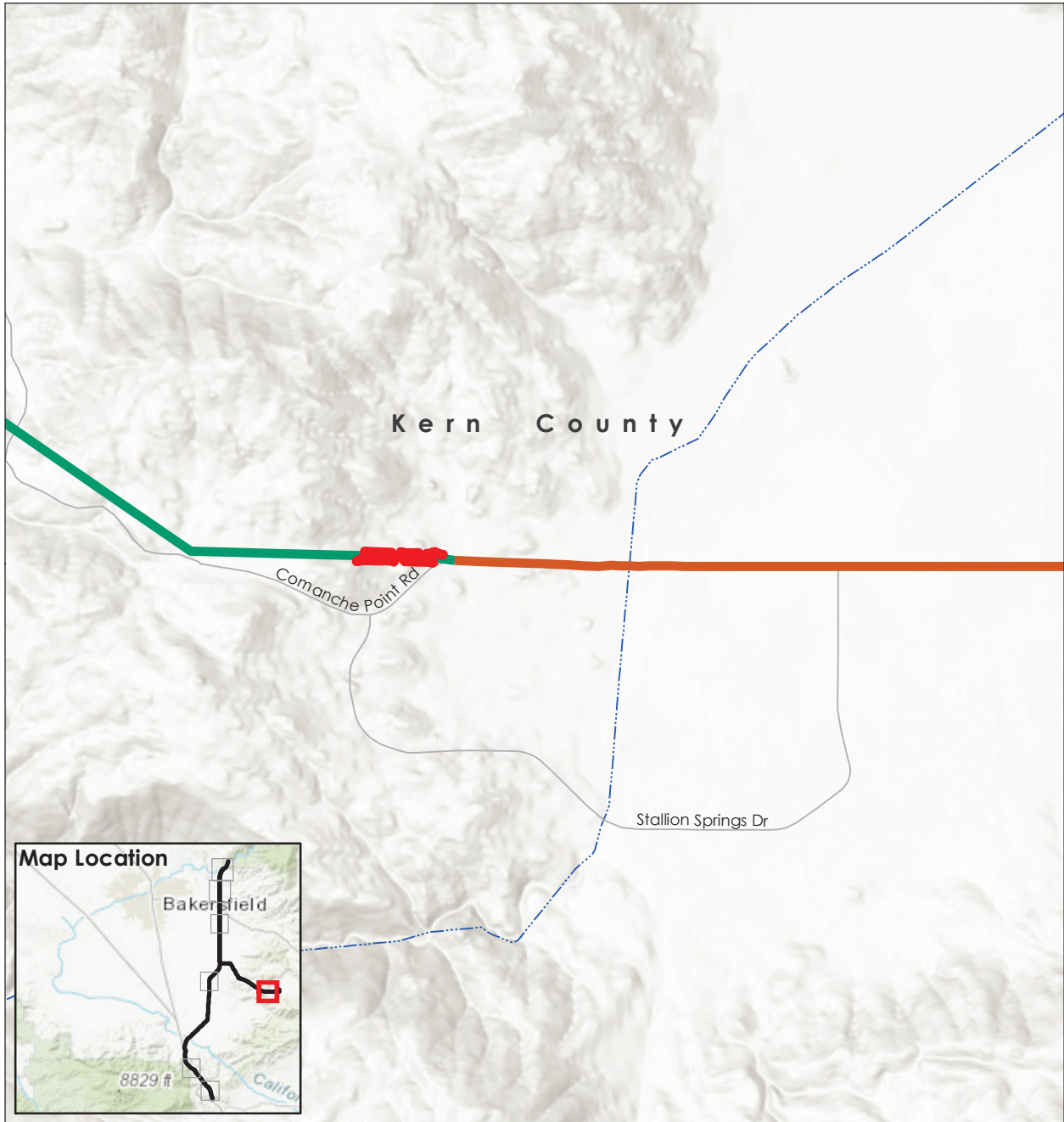
- Anemopsis californica
- Leymus triticoides – Bromus spp. – Avena spp.
- Mimulus guttatus
- Nassella cernua

- Populus fremontii – Salix lasiolepis

- Quercus lobata / grass
- Salix laevigata
- Salix lucida ssp. lasiandra
- Salix lucida subsp. lasiandra
- / Urtica urens – Urtica dioica

- Solidago confinis





**Legend**

Scale = 1:33,000  
Created: 8/3/2023

**Project Elements**

- Substation
- Proposed Project Alignment**

- Segment 4
- Segment 5

**Sensitive Vegetation Communities**

- Quercus lobata / grass

