

Legend

Scale = 1:75,000
Created: 8/3/2023

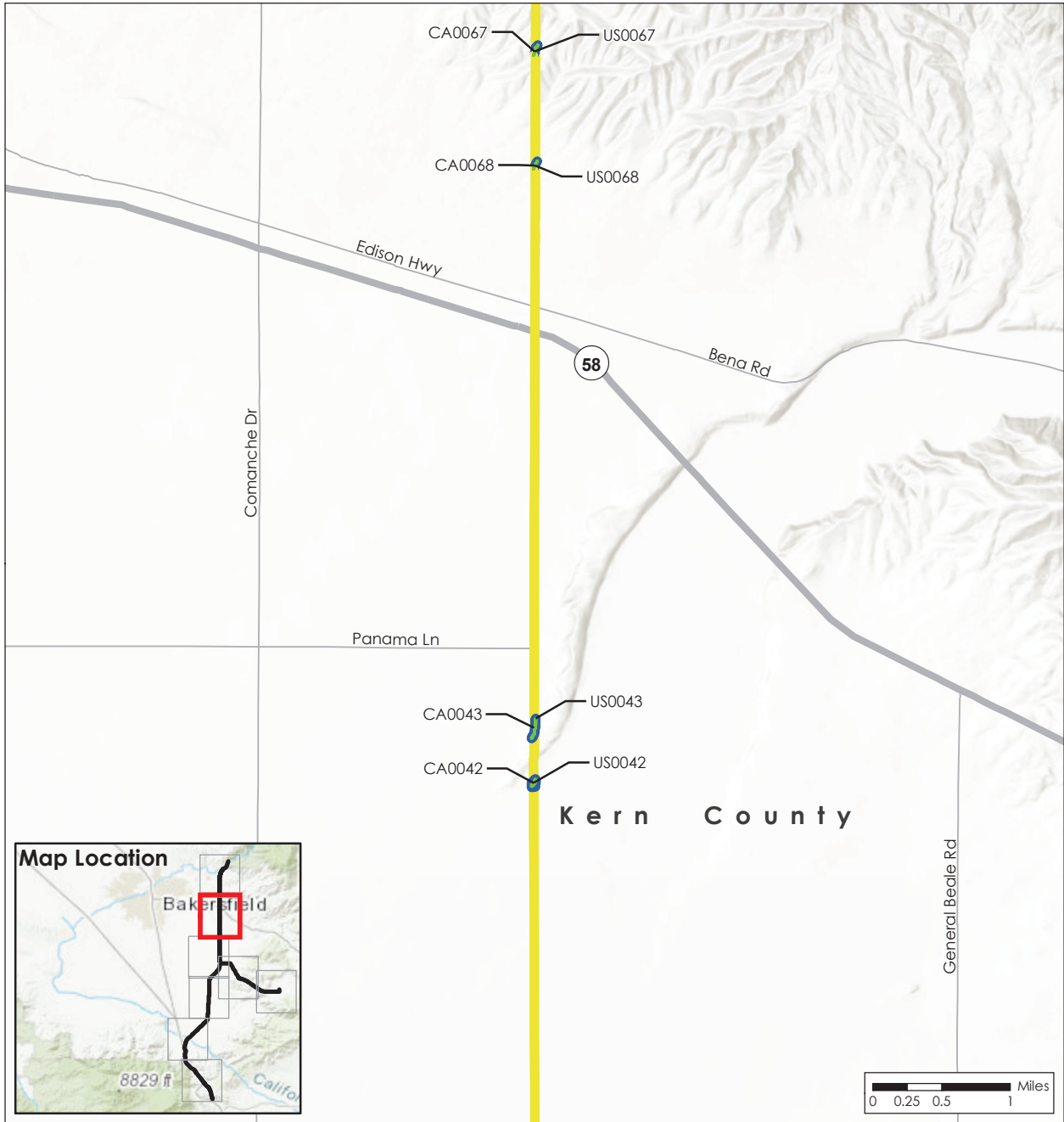
Project Elements

- Substation
- Proposed Project Alignment
- Segment 1

Jurisdictional Waters

- USACE/RWQCB
- CDFW





Legend

Scale = 1:75,000
Created: 8/3/2023

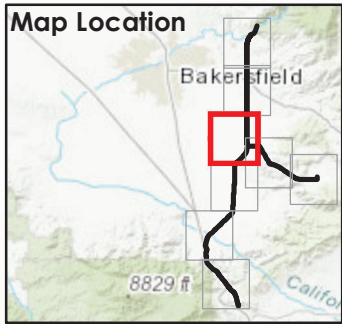
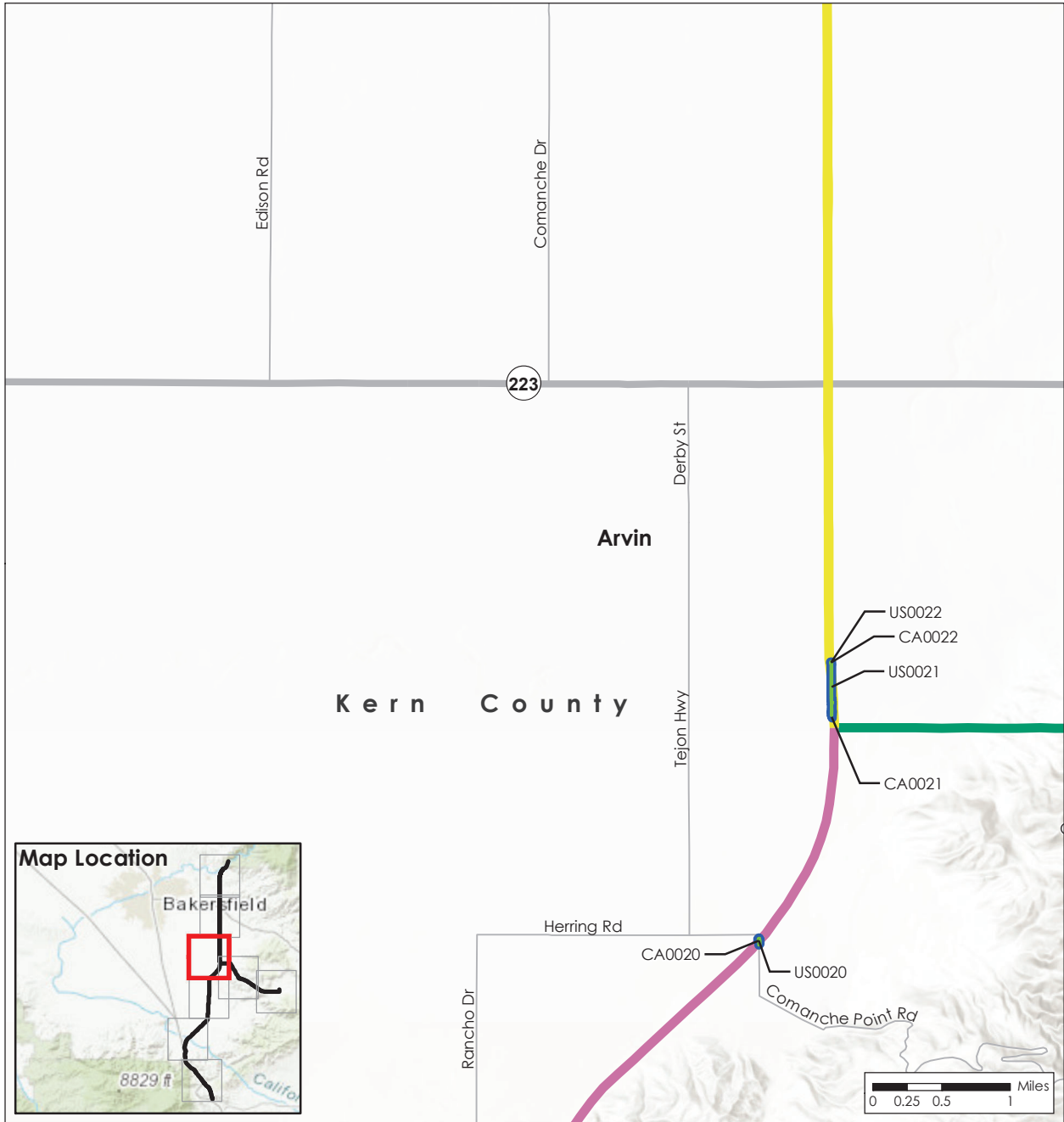
Project Elements

- Substation
- Proposed Project Alignment
- Segment 1

Jurisdictional Waters

- USACE/RWQCB
- CDFW





Legend

Scale = 1:75,000
Created: 8/3/2023



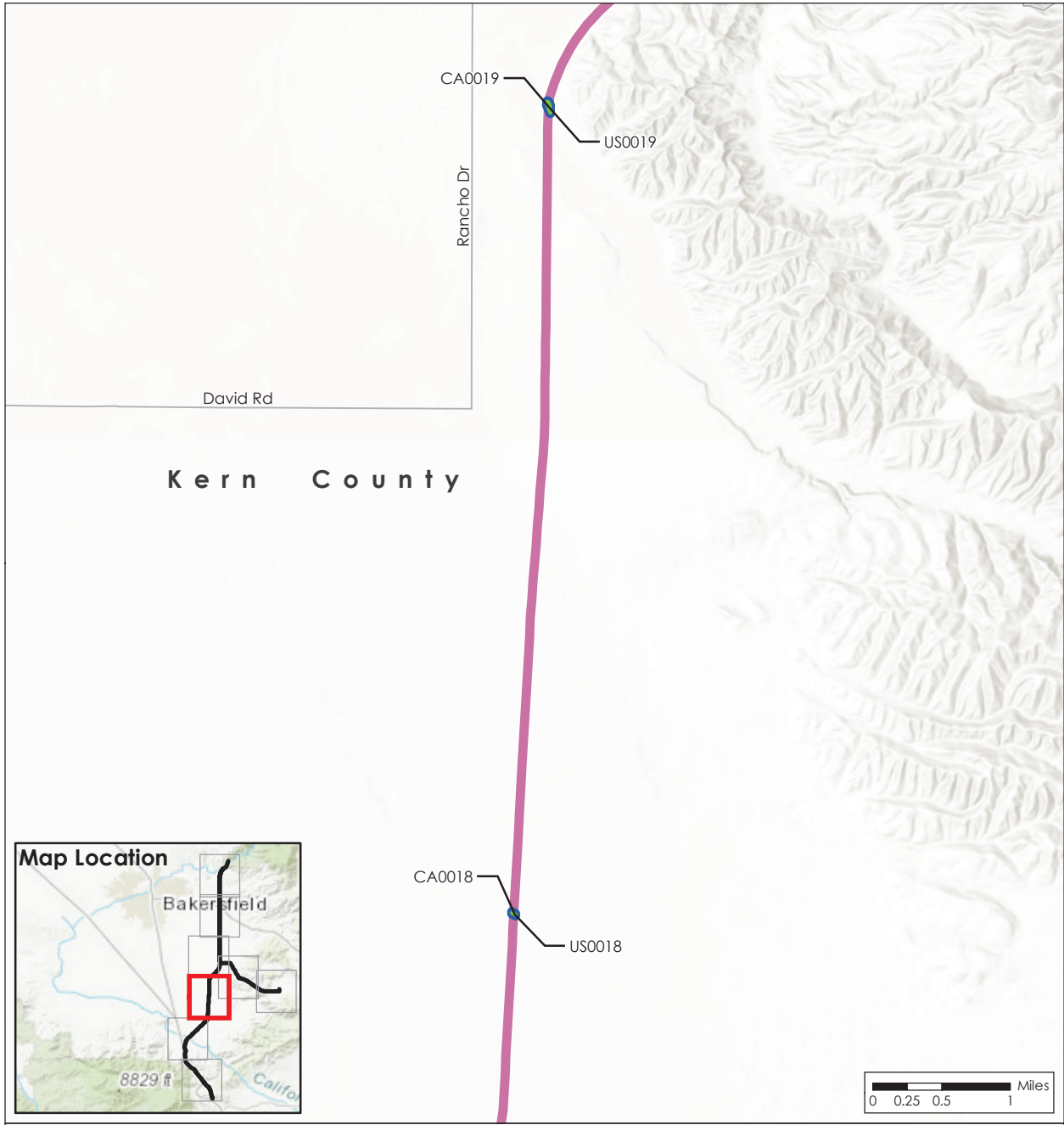
Project Elements

- Substation
- Proposed Project Alignment**
- Segment 1
- Segment 2
- Segment 4

Jurisdictional Waters

- USACE/RWQCB
- CDFW





Legend

Scale = 1:75,000
Created: 8/3/2023

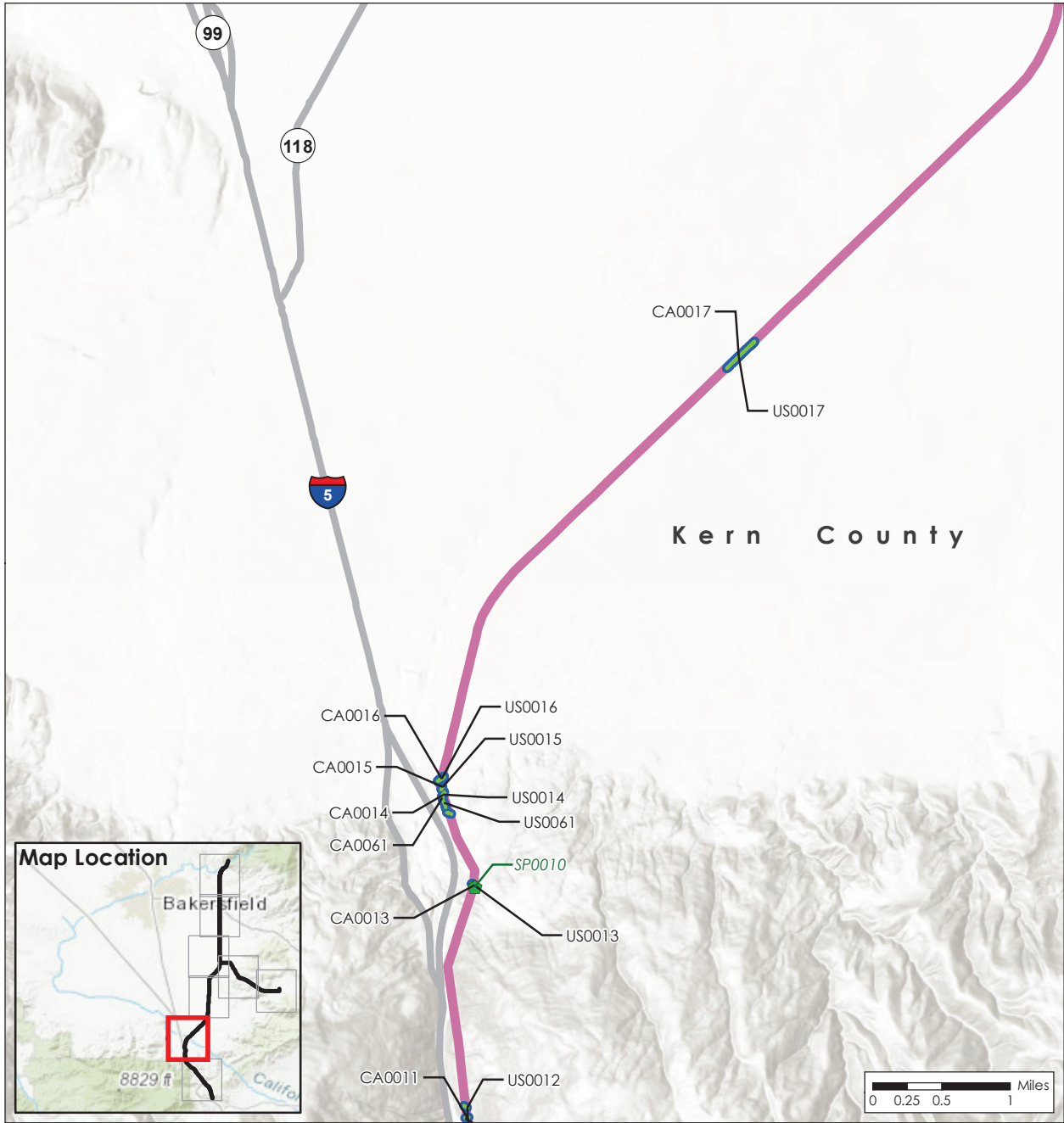
Project Elements

- Substation
- Proposed Project Alignment**
- Segment 2

Jurisdictional Waters

- USACE/RWQCB
- CDFW





Legend

Scale = 1:75,000
Created: 8/3/2023

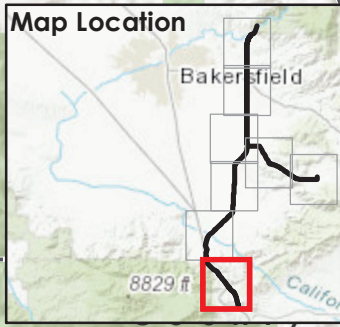
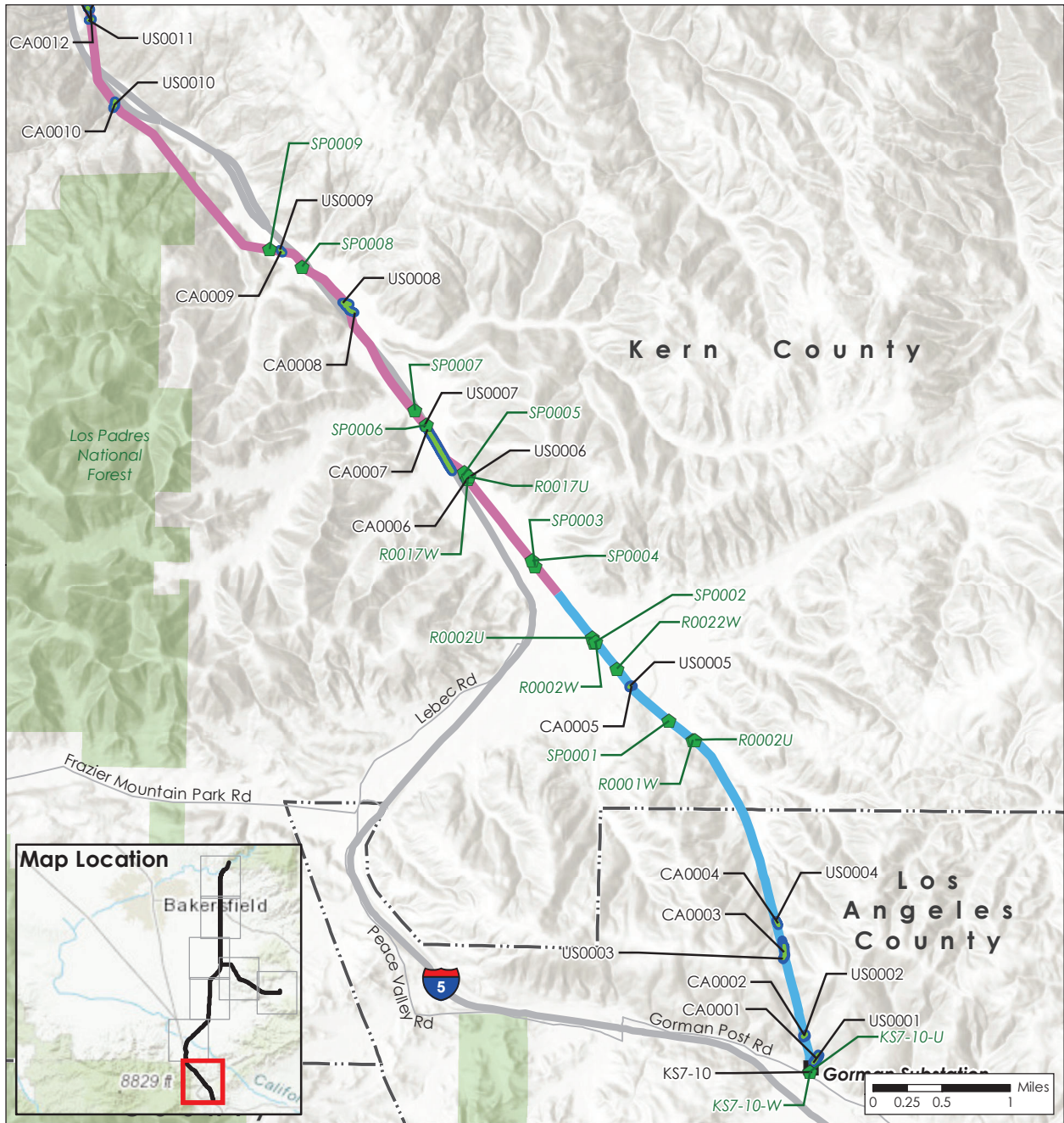
Project Elements

- Substation
- Proposed Project Alignment**
- Segment 2

Jurisdictional Waters

- USACE/RWQCB
- CDFW
- ◆ Wetland Sample Point





Legend

Scale = 1:75,000
Created: 8/3/2023

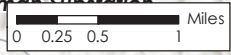


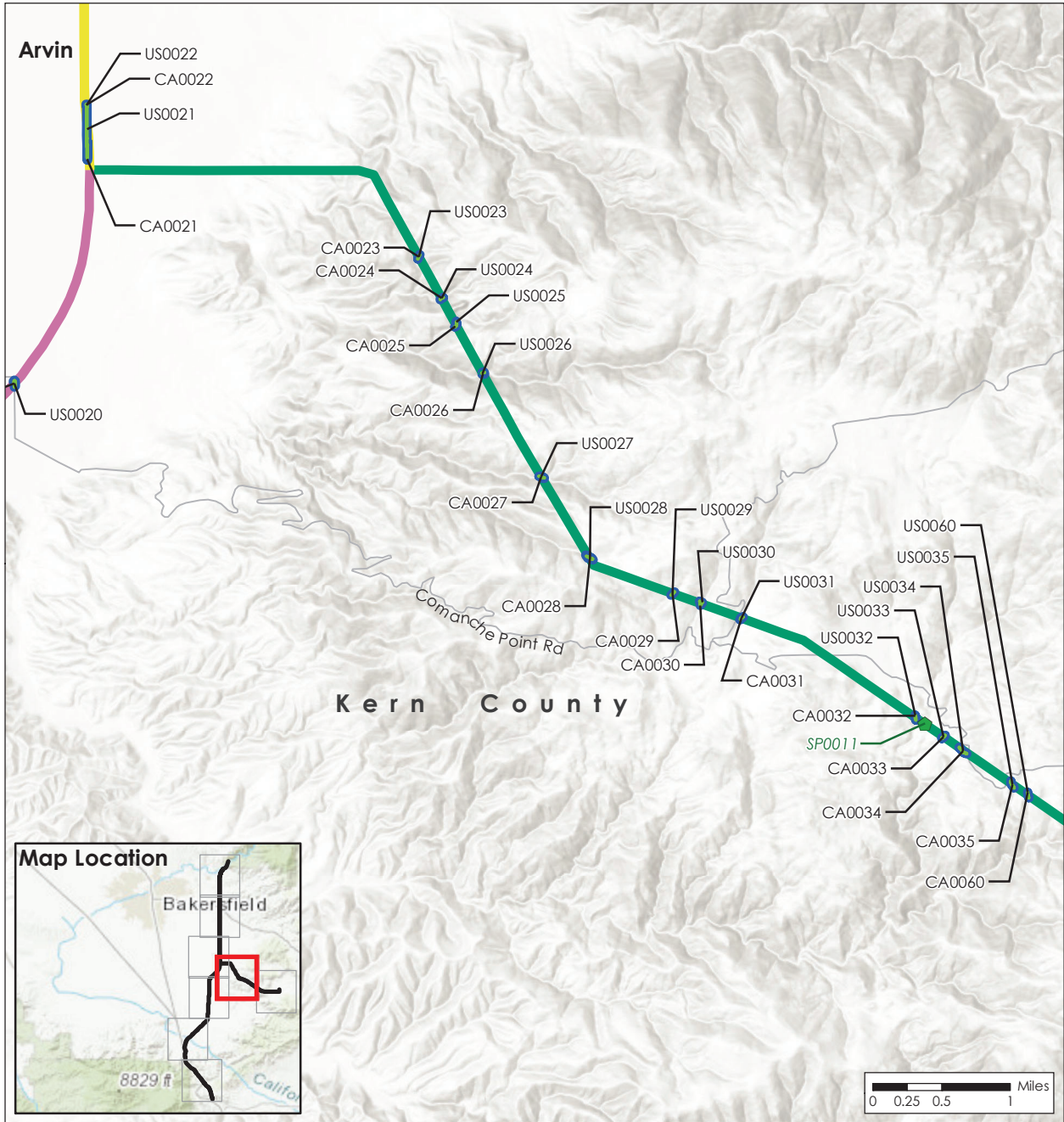
Project Elements

- Substation
- Proposed Project Alignment**
- Segment 2
- Segment 3

Jurisdictional Waters

- CDFW/USACE/RWQCB
- USACE/RWQCB
- CDFW
- ◆ Wetland Sample Point





Legend

Scale = 1:75,000
Created: 8/3/2023

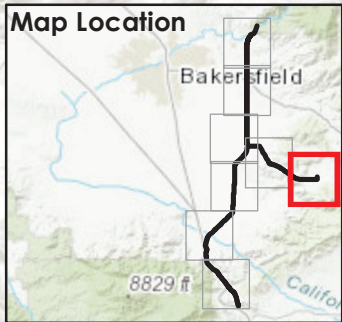
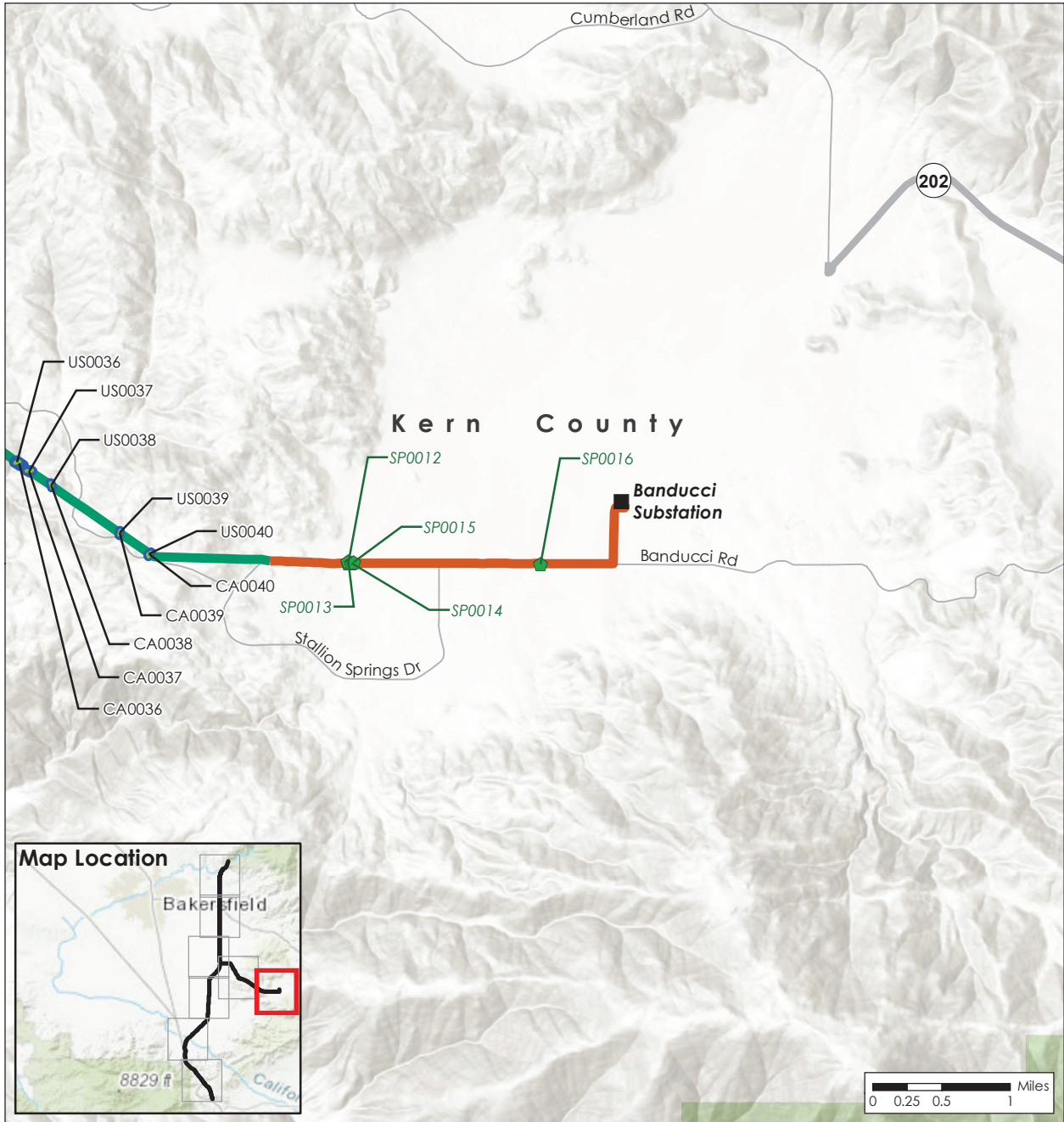


Project Elements

- Substation
- Proposed Project Alignment**
- Segment 1
- Segment 2
- Segment 4

Jurisdictional Waters

- USACE/RWQCB
- CDFW
- ◆ Wetland Sample Point



Legend

Scale = 1:75,000
Created: 8/3/2023



Project Elements

- Substation
- Proposed Project Alignment**
- Segment 4
- Segment 5

Jurisdictional Waters

- USACE/RWQCB
- CDFW
- ◆ Wetland Sample Point