

# Cultural Resources Survey Report

---

Club Dock Replacement, City of Avalon, Santa Catalina Island,  
California

**Prepared For:**

Ryan Birdseye, Principal  
Birdseye Planning Group, LLC  
P.O. Box 1956  
Vista, California 92085

**Prepared By:**



South Environmental LLC  
2061 N. Los Robles Avenue., Ste. 205  
Pasadena, California 91104

Authors: Samantha Jovanovic, MA, MS, Kevin Hunt, BA, and Samantha Murray, MA, RPA

**July 2024**

# Table of Contents

---

Executive Summary .....	1
1 Introduction .....	2
1.1 Project Location .....	2
1.2 Project Description .....	2
1.3 Regulatory Framework .....	4
2 Area of Potential Effects .....	11
3 Environmental Setting .....	13
4 Cultural Setting .....	14
4.1 Prehistoric Setting .....	14
4.2 Ethnographic Overview .....	16
4.3 Historic Overview .....	17
5 Background Research .....	21
5.1 CHRIS Records Search .....	21
5.2 Native American Scoping .....	24
5.3 Review of Historic Aerial Photographs .....	30
6 Cultural Resources Survey .....	31
6.1 Methods .....	31
6.2 Results .....	35
7 Findings and Recommendations .....	36
7.1 Summary of Findings .....	36
7.2 Recommendations .....	36
8 References .....	38
Appendix A: Records Search Summary	
Appendix B: Native American Coordination	
Appendix C: Preparers' Qualifications	



## Figures

Figure 1. Project Location .....	3
Figure 2. APE Map.....	12

## Tables

Table 1. Previous Cultural Resources Investigations Within 0.5-Mile of the Project Site .....	21
Table 2. Previously Recorded Cultural Resources Within 0.5-Mile of the Project Site.....	23
Table 3. Summary of Native American Outreach.....	25

## Executive Summary

---

South Environmental was retained to prepare a cultural resources survey report for the Club Dock Replacement Project, located in the City of Avalon, on Santa Catalina Island, in Los Angeles County, California. This analysis includes the results of a California Historical Resources Information Center (CHRIS) records search of the project site and a one-half (0.5)-mile radius from the South Central Coastal Information Center (SCCIC); a California Native American Heritage Commission (NAHC) Sacred Lands File search and informational scoping letters to local tribes; and an intensive-level pedestrian survey of the project site by a qualified archaeologist.

This report was prepared in conformance with Section 106 of the National Historic Preservation Act (NHPA) and its implementing regulation Title 36 CFR Part 800, California Environmental Quality Act (CEQA) Guidelines § 15064.5 for historical resources and the *City of Avalon General Plan* (2013) and the *Cultural Resources and Native American Remains Monitoring and Mitigation Compliance Plan* (2018).

No archaeological resources were identified within the project APE, as a result of the CHRIS records search, NAHC Sacred Lands File search and Native American scoping, or pedestrian survey by a qualified archaeologist. Yet, review of the SCCIC records search results, archaeological literature, receipt of a positive Sacred Lands File search from the NAHC, and responses from Native American contacts indicates that the project site is in an area that is sensitive for prehistoric archaeological resources. However, historic aerial photographs of the project site confirm that the upper levels of soil within the project site were previously disturbed by construction and development of the existing shoreline. Nonetheless, it is always possible to encounter resources during project-related ground disturbance. Standard unanticipated discovery measures for archaeological resources and human remains are provided below. With implementation of these regulatory requirements, the proposed project would result in no adverse effects to historic properties under Section 106 of the NHPA and a less than significant impact to historical resources under CEQA.

# 1 Introduction

---

South Environmental was retained to prepare a cultural resources survey report for the Club Dock Replacement Project, located in the City of Avalon, on Santa Catalina Island, in Los Angeles County, California. This analysis includes the results of a California Historical Resources Information Center (CHRIS) records search of the project site and a one-half (0.5)-mile radius from the South Central Coastal Information Center (SCCIC); a California Native American Heritage Commission (NAHC) Sacred Lands File search and informational scoping letters to local tribes; and an intensive-level pedestrian survey of the project site by a qualified archaeologist.

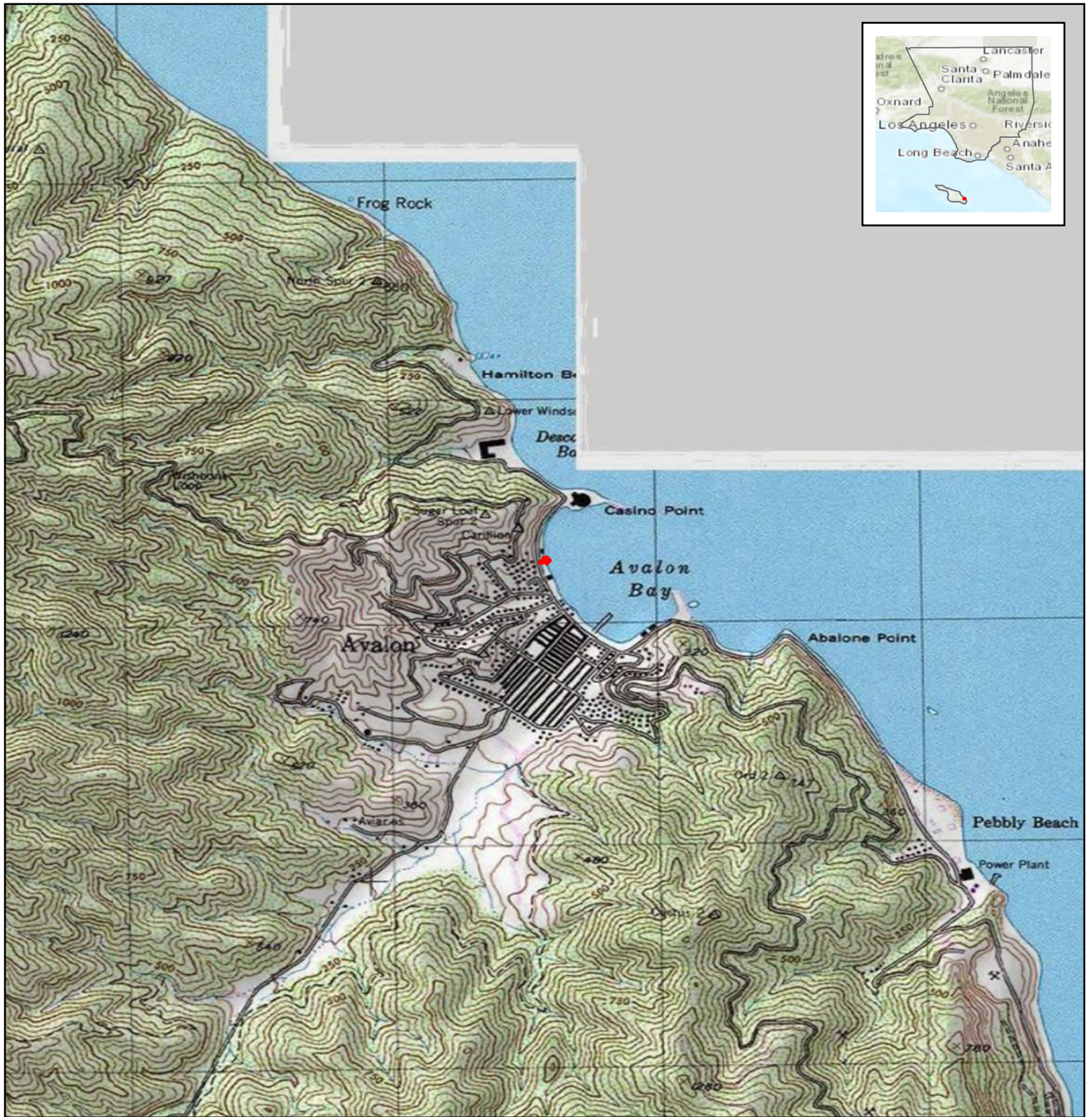
This report was prepared in conformance with Section 106 of the National Historic Preservation Act (NHPA) and its implementing regulation Title 36 CFR Part 800, California Environmental Quality Act (CEQA) Guidelines § 15064.5 for historical resources and the *City of Avalon General Plan* (2013) and the *Cultural Resources and Native American Remains Monitoring and Mitigation Compliance Plan* (2018) by South Environmental Archaeologist Samantha Jovanovic, MA, MS, Principal Archaeologist Kevin Hunt, BA, and Cultural Resources Director and Principal Investigator Samantha Murray, MA, RPA, who meets the Secretary of the Interior's Professional Qualification Standards for Prehistoric and Historic Archaeology. Qualifications of the preparers are provided in Appendix C.

## 1.1 Project Location

The project site is located at the shoreline in the City of Avalon on Santa Catalina Island, Los Angeles County, California, between the existing Catalina Yacht Club and Tuna Club buildings, and is currently developed with a seawall, sidewalk, and a dock. The project site is located on the United States Geological Survey (USGS) Santa Catalina East, California 7.5-minute Quadrangle Map in Section 27 of Township 09 South and Range 14 West, San Bernardino Base and Meridian (Figure 1).

## 1.2 Project Description

The project at the shoreline of South Beach in the City of Avalon, California, is currently a developed area along the shoreline with a seawall, sidewalk, and a dock. It is understood that the project will not exceed the footprint of the current structures. The proposed project would replace the existing club dock with an 80-foot-long gangway, the maximum length as required by the Americans with Disabilities Act (ADA). The connection at the sidewalk will be a simple hinge. The H-frame would be pile driven and include a hoist which would allow City staff to raise the gangway and pin it in place above a heavy swell when required. All work will occur within disturbed areas both upland and underwater replacing deteriorated infrastructure.



Source: ESRI USA Topo Maps and World Topo Map 2024

Club Dock Replacement Project

# Figure 1. Project Location Map

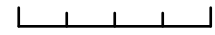
Project Site

Project Location is within Avalon, California, in Los Angeles County on the USGS Santa Catalina East 7.5-minute quadrangle map in Section 27 of Township 09 South and Range 14 West

Center Coordinate (Decimal Degrees):  
 Latitude: 33.3463862N Longitude: -118.3270814W



0 1,000 2,000 Feet



Scale: 1: 24,000



## 1.3 Regulatory Framework

### 1.3.1 Federal

This study was completed in compliance with federal cultural resources laws and regulations, including Section 106 of the NHPA. Under Section 106, historic and archaeological districts, sites, buildings, structures, and objects are assigned significance based on their exceptional value or quality in illustrating or interpreting history, architecture, archaeology, engineering, and culture. A number of criteria are used in demonstrating resource importance and are described below.

#### **The National Historic Preservation Act**

The NHPA established the National Register of Historic Places (NRHP) and the President's Advisory Council on Historic Preservation (ACHP), and provided that states may establish State Historic Preservation Officers (SHPOs) to carry out some of the functions of the NHPA. Most significantly for federal agencies responsible for managing cultural resources, Section 106 of the NHPA directs that

[t]he head of any Federal agency having direct or indirect jurisdiction over a proposed Federal or federally assisted undertaking in any State and the head of any Federal department or independent agency having authority to license any undertaking shall, prior to the approval of the expenditure of any Federal funds on the undertaking or prior to the issuance of any license, as the case may be, take into account the effect of the undertaking on any district, site, building, structure, or object that is included in or eligible for inclusion in the NRHP.

Section 106 also affords the ACHP a reasonable opportunity to comment on the undertaking (16 U.S.C. 470f). 36 Code of Federal Regulations, Part 800 (36 CFR 800) implements Section 106 of the NHPA. It defines the steps necessary to identify historic properties (those cultural resources listed in or eligible for listing in the NRHP), including consultation with federally recognized Native American tribes to identify resources with important cultural values; to determine whether or not they may be adversely affected by a proposed undertaking; and the process for eliminating, reducing, or mitigating the adverse effects.

The content of 36 CFR 60.4 defines criteria for determining eligibility for listing in the NRHP. The significance of cultural resources identified during an inventory must be formally evaluated for historic significance in consultation with the ACHP and the California SHPO to determine if the resources are eligible for inclusion in the NRHP. Cultural resources may be considered eligible for listing if they possess integrity of location, design, setting, materials, workmanship, feeling, and association.

#### **National Register of Historic Places**

The NRHP is the United States' official list of districts, sites, buildings, structures, and objects worthy of preservation. Overseen by the National Park Service, under the U.S. Department of the Interior, the

NRHP was authorized under the National Historic Preservation Act, as amended. Its listings encompass all National Historic Landmarks and historic areas administered by the National Park Service (NPS).

NRHP guidelines for the evaluation of historic significance were developed to be flexible and to recognize the accomplishments of all who have made significant contributions to the nation's history and heritage. Its criteria are designed to guide federal agencies, state and local governments, and others in evaluating potential entries in the NRHP. For a property to be listed in or determined eligible for listing, it must be demonstrated to possess integrity and to meet at least one of the following criteria:

The quality of significance in American history, architecture, archaeology, engineering, and culture is present in districts, sites, buildings, structures, and objects that possess integrity of location, design, setting, materials, workmanship, feeling, and association, and:

- A. That are associated with events that have made a significant contribution to the broad patterns of our history; or
- B. That are associated with the lives of persons significant in our past; or
- C. That embody the distinctive characteristics of a type, period, or method of construction, or that represent the work of a master, or that possess high artistic values, or that represent a significant and distinguishable entity whose components may lack individual distinction; or
- D. That have yielded, or may be likely to yield, information important in prehistory or history.

Integrity is defined in NRHP guidance, *How to Apply the National Register Criteria for Evaluation*, as "the ability of a property to convey its significance. To be listed in the NRHP, a property must not only be shown to be significant under the NRHP criteria, but it also must have integrity" (NPS 1990). NRHP guidance further asserts that properties be completed at least 50 years ago to be considered for eligibility. Properties completed fewer than 50 years before evaluation must be proven to be "exceptionally important" (criteria consideration G) to be considered for listing.

### 1.3.2 State

#### **California Register of Historical Resources**

In California, the term "historical resource" includes but is not limited to "any object, building, structure, site, area, place, record, or manuscript which is historically or archaeologically significant, or is significant in the architectural, engineering, scientific, economic, agricultural, educational, social, political, military, or cultural annals of California" (California Public Resources Code Section 5020.1(j)). In 1992, the California legislature established the CRHR "to be used by state and local agencies, private groups, and citizens to identify the state's historical resources and to indicate what properties are to

be protected, to the extent prudent and feasible, from substantial adverse change” (California Public Resources Code Section 5024.1(a)). The criteria for listing resources on the CRHR were expressly developed to be in accordance with previously established criteria developed for listing in the National Register of Historic Places (NRHP), enumerated below. According to California Public Resources Code Section 5024.1(c)(1–4), a resource is considered historically significant if it (i) retains “substantial integrity,” and (ii) meets at least one of the following criteria:

- (1) Is associated with events that have made a significant contribution to the broad patterns of California’s history and cultural heritage.
- (2) Is associated with the lives of persons important in our past.
- (3) Embodies the distinctive characteristics of a type, period, region, or method of construction, or represents the work of an important creative individual, or possesses high artistic values.
- (4) Has yielded, or may be likely to yield, information important in prehistory or history.

In order to understand the historic importance of a resource, sufficient time must have passed to obtain a scholarly perspective on the events or individuals associated with the resource. A resource less than 50 years old may be considered for listing in the CRHR if it can be demonstrated that sufficient time has passed to understand its historical importance (see 14 CCR 4852(d)(2)).

The CRHR protects cultural resources by requiring evaluations of the significance of prehistoric and historic resources. The criteria for the CRHR are nearly identical to those for the NRHP, and properties listed or formally designated as eligible for listing in the NRHP are automatically listed in the CRHR, as are the state landmarks and points of interest. The CRHR also includes properties designated under local ordinances or identified through local historical resource surveys.

## **California Environmental Quality Act**

As described further below, the following CEQA statutes and CEQA Guidelines are of relevance to the analysis of archaeological, historic, and tribal cultural resources:

- California Public Resources Code Section 21083.2(g) defines “unique archaeological resource.”
- California Public Resources Code Section 21084.1 and CEQA Guidelines Section 15064.5(a) define “historical resources.” In addition, CEQA Guidelines Section 15064.5(b) defines the phrase “substantial adverse change in the significance of an historical resource.” It also defines the circumstances when a project would materially impair the significance of an historical resource.
- California Public Resources Code Section 21074(a) defines “tribal cultural resources.”

- California Public Resources Code Section 5097.98 and CEQA Guidelines Section 15064.5(e) set forth standards and steps to be employed following the accidental discovery of human remains in any location other than a dedicated ceremony.
- California Public Resources Code Sections 21083.2(b)-(c) and CEQA Guidelines Section 15126.4 provide information regarding the mitigation framework for archaeological and historic resources, including examples of preservation-in-place mitigation measures; preservation-in-place is the preferred manner of mitigating impacts to significant archaeological sites because it maintains the relationship between artifacts and the archaeological context and may also help avoid conflict with religious or cultural values of groups associated with the archaeological site(s).

More specifically, under CEQA, a project may have a significant effect on the environment if it may cause “a substantial adverse change in the significance of an historical resource” (California Public Resources Code Section 21084.1; CEQA Guidelines Section 15064.5(b).) If a site is either listed or eligible for listing in the CRHR, or if it is included in a local register of historic resources or identified as significant in a historical resources survey (meeting the requirements of California Public Resources Code Section 5024.1(q)), it is a “historical resource” and is presumed to be historically or culturally significant for purposes of CEQA (California Public Resources Code Section 21084.1; CEQA Guidelines Section 15064.5(a)). The lead agency is not precluded from determining that a resource is a historical resource even if it does not fall within this presumption (California Public Resources Code Section 21084.1; CEQA Guidelines Section 15064.5(a)).

A “substantial adverse change in the significance of an historical resource” reflecting a significant effect under CEQA means “physical demolition, destruction, relocation, or alteration of the resource or its immediate surroundings such that the significance of an historical resource would be materially impaired” (CEQA Guidelines Section 15064.5(b)(1); California Public Resources Code Section 5020.1(q)). In turn, CEQA Guidelines section 15064.5(b)(2) states the significance of an historical resource is materially impaired when a project:

1. Demolishes or materially alters in an adverse manner those physical characteristics of an historical resource that convey its historical significance and that justify its inclusion in, or eligibility for, inclusion in the California Register of Historical Resources; or
2. Demolishes or materially alters in an adverse manner those physical characteristics that account for its inclusion in a local register of historical resources pursuant to section 5020.1(k) of the Public Resources Code or its identification in an historical resources survey meeting the requirements of section 5024.1(g) of the Public Resources Code, unless the public agency reviewing the effects of the project establishes by a preponderance of evidence that the resource is not historically or culturally significant; or
3. Demolishes or materially alters in an adverse manner those physical characteristics of a historical resource that convey its historical significance and that justify its eligibility for

inclusion in the California Register of Historical Resources as determined by a lead agency for purposes of CEQA.

Pursuant to these sections, the CEQA inquiry begins with evaluating whether a project site contains any “historical resources,” then evaluates whether that project will cause a substantial adverse change in the significance of a historical resource such that the resource’s historical significance is materially impaired.

If it can be demonstrated that a project will cause damage to a unique archaeological resource, the lead agency may require reasonable efforts be made to permit any or all of these resources to be preserved in place or left in an undisturbed state. To the extent that they cannot be left undisturbed, mitigation measures are required (California PRC Section 21083.2[a], [b], and [c]).

California PRC Section 21083.2(g) defines a unique archaeological resource as an archaeological artifact, object, or site about which it can be clearly demonstrated that without merely adding to the current body of knowledge, there is a high probability that it meets any of the following criteria:

1. Contains information needed to answer important scientific research questions and that there is a demonstrable public interest in that information.
2. Has a special and particular quality such as being the oldest of its type or the best available example of its type.
3. Is directly associated with a scientifically recognized important prehistoric or historic event or person.

Impacts to non-unique archaeological resources are generally not considered a significant environmental impact (California PRC section 21083.2(a); CEQA Guidelines Section 15064.5(c)(4)). However, if a non-unique archaeological resource qualifies as tribal cultural resource (California PRC Section 21074(c), 21083.2(h)), further consideration of significant impacts is required. CEQA Guidelines Section 15064.5 assigns special importance to human remains and specifies procedures to be used when Native American remains are discovered. These procedures are detailed in California PRC Section 5097.98.

### 1.3.3 Local

## City of Avalon General Plan

### **IV. Conservation Element – IV.H Cultural Resources**

**Goal:** Preserve and protect sites of significant archaeological, historic, or architectural resources wherever feasible.

**Policies:**

- IV-38 Prevent the loss or compromise of significant archaeological, historical, and other cultural resources and landmarks located within the City.
- IV-39 Provide public access to historic sites and communicate their historical significance to visitors.
- IV-40 Encourage the rehabilitation and upkeep of structures identified as valuable to the City's significant architectural, historical, and cultural buildings and listed in the City's historic register.

**Implementation Actions:**

- Require a professionally prepared archaeological report for any project located within a potential sensitive area.
- Ensure that only qualified professional archaeologists that meet the Secretary of the Interior's standard of qualifications are used on projects located within a potential sensitive area.
- When significant archeological sites or artifacts are discovered on a site, coordinate professional archeologists, relevant state agencies, and concerned Native American tribes regarding preservation of sites or professional retrieval and preservation of artifacts prior to development of the site.
- Require a professional, qualified historian to conduct a literature search and/or survey for any project that entails demolition or modification of an existing structure that may be of historical value in relation to the City's cultural heritage.
- Require excavation for any project located within a potential sensitive area to be monitored by a qualified archaeologist and/or Native American Representative.
- Require any proposed excavation or modification to areas on the four historic archeologically sensitive areas defined in Figure 4 of the Preliminary Cultural Resource Management Plan to require prior consultation with the planning department and a qualified archaeologist regarding the implementation of acceptable mitigation strategies.
- Require projects involving modification or rehabilitation of structures that may be of historical value to incorporate the Secretary of the Interior's Standards for Rehabilitation and Guidelines for Rehabilitating Historic Buildings.
- Require projects involving demolition of an existing structure that may be of historical value to consult with local museums or cultural societies and incorporate mitigation, such as photodocumentation, collection of oral histories, and physical or digital model, as necessary.

## **Cultural Resources and Native American Remains Monitoring and Mitigation Compliance Plan**

### **1.0 City of Avalon Policy Statement**

The City of Avalon realizes the importance of preserving and protecting cultural resources and Native American human remains from vandalism and inadvertent destruction. The City therefore wishes to establish a proactive notification process outlining the laws and responsibilities governing anyone uncovering cultural resources, archaeological features, or human remains during excavations within its jurisdiction. Accordingly, the City will enact policy and procedures to comply with California Assembly Bill No. 52 (AB 52) which require consultation between a lead agency and California Native American Tribes.

The City will, as a regular policy, provide a copy of *the Professional Guide for the Preservation and Protection of Native American Remains and Associated Grave Goods* published and provided by the California Native American Heritage Commission to:

- Each applicant when an excavation permit is issued.
- Governmental agencies or private companies currently holding a blanket excavation permit from the City of Avalon.

In addition, the City of Avalon will:

- Include a reference to this material in its Project Management Guide for Capital Improvement Projects.
- Maintain a record of the location and depth of each burial site found and brought to its attention.

### **2.0 Cultural Resources and Native American Remains**

A qualified archaeologist that meets the Secretary of the Interior's Professional Qualification Standard for Archaeology will be retained for ground disturbing projects within the City of Avalon. The qualified archaeologist will serve as the Principal Archaeologist and ensure compliance with all local, state, and federal laws and regulations. An archaeological monitor and Tribal Monitor/Representative will monitor all ground disturbing activity and provide technical support to the City during projects. The Tribal Monitor/Representative will be someone of Gabrielino/Tongva descent. The archaeological monitor operates under the supervision of the Principal Archaeologist, and the archaeological monitor and Tribal Monitor/Representative have the authority to redirect work as necessary in order to evaluate and protect newly discovered cultural resources and/or Native American remains.

## 2 Area of Potential Effects

---

In accordance with Section 106 of the NHPA, the Area of Potential Effects (APE) is the geographic area or areas within which an undertaking may directly or indirectly cause changes in the character or use of historic properties, if any such properties exist. Determination of the APE is influenced by a project's setting, the scale and nature of the undertaking, and the different kinds of effects that may result from the undertaking (36 CFR 800.16(d)).

The project APE (Figure 2) includes the existing club dock proposed for replacement and a 50-foot buffer in all directions. The horizontal APE captures the maximum possible area of disturbance and any immediately adjacent areas, including a portion of the sidewalk, seawall, and existing underwater foundations and piers. The vertical APE includes the maximum height of the hoist when raising the gangway (approximately 10 feet) and the maximum depth of proposed ground disturbance below the water line where pile driving will occur (approximately 2-3 feet).

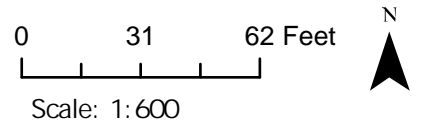


Source: BING Aerial Map 2024

Club Dock Replacement Project

Figure 2. Project APE Map

- Project Site
- APE



### 3 Environmental Setting

---

The project site is adjacent to an area that has been significantly developed over the past century with sidewalks, roads, and buildings. The site sits at sea level at the shoreline of South Beach and is partially submerged under water.

The study area has a Mediterranean climate with cool summers and mild winters. Average summer high temperatures are in the high-70s (Fahrenheit), and average winter lows are in the low-50s (Fahrenheit). Average annual rainfall is 1.06 inches, with the wettest months being December through March, and almost no precipitation between June and September (Kauffman 2021; NOAA 2024).

Santa Catalina Island possesses rugged terrain, and the coastline is dominated by steep hillsides punctuated by bays with sandy beaches such as Avalon. Santa Catalina island, along with the rest of the Channel Islands formed along an accretion zone during the subduction of the Farallon plate under the North American plate. As such, Catalina is comprised of intrusive igneous and metamorphic rocks. Much of the southern half of the island, which includes Avalon and the project site, is comprised of Miocene Age (ca. 19 Ma) Tertiary Volcanics that are felsic to intermediate granitic rocks such as “hornblende quartz diorite” (Boundy-Sanders et al. 1993, Weigand and Savage 2002). This unit is a pluton that intruded on the metamorphic schist (e.g. Catalina Schist) to the north and the sedimentary rocks (e.g. San Onofre Breccia) on the southern tip of the island.

The area around the site is predominantly comprised of alluvium from the nearby hills. These hills are granitic in composition with high quantities of quartz. The soil around the site has a very low moisture capacity. The soil is largely sand with some organic material and a small amount of clay particles (UC Davis and NRCS 2024).

## 4 Cultural Setting

---

### 4.1 Prehistoric Setting

For nearly a century, archaeologists have developed chronological sequences to explain prehistoric cultural changes within all or portions of southern California (c.f., Jones and Klar 2007; Moratto 1984). Wallace (1955, 1978) devised a prehistoric chronology for the southern California coastal region based on early studies and focused on data synthesis that included four horizons: Early Man, Milling Stone, Intermediate, and Late Prehistoric. Though initially lacking the chronological precision of absolute dates (Moratto 1984:159), Wallace's (1955) synthesis has been modified and improved using thousands of radiocarbon dates obtained by southern California researchers over recent decades (Byrd and Raab 2007:217; Koerper and Drover 1983; Koerper et al. 2002; Mason and Peterson 1994). The prehistoric chronological sequence for southern California presented below is a composite based on Wallace (1955) and Warren (1968) as well as later studies, including Koerper and Drover (1983).

#### 4.1.1 Early Man Horizon (CA. 10,000 – 6,000 B.C.)

Numerous pre-8000 B.C. sites have been identified along the mainland coast and Channel Islands of southern California (c.f., Erlandson 1991; Johnson et al. 2002; Jones and Klar 2007; Moratto 1984; Rick et al. 2001:609). The Arlington Springs site on Santa Rosa Island produced human femurs dated to approximately 13,000 years ago (Arnold et al. 2004; Johnson et al. 2002). On nearby San Miguel Island, human occupation at Daisy Cave (SMI-261) has been dated to nearly 13,000 years ago and included basketry greater than 12,000 years old, the earliest on the Pacific Coast (Arnold et al. 2004).

Although few Clovis or Folsom-style fluted points have been found in southern California (e.g., Dillon 2002; Erlandson et al. 1987), Early Man Horizon sites are generally associated with a greater emphasis on hunting than later horizons. Recent data indicate that the Early Man economy was a diverse mixture of hunting and gathering, including a significant focus on aquatic resources in coastal areas (e.g., Jones et al. 2002) and on inland Pleistocene lakeshores (Moratto 1984). A warm and dry 3,000-year period called the Altithermal began around 6000 B.C. The conditions of the Altithermal are likely responsible for the change in human subsistence patterns at this time, including a greater emphasis on plant foods and small game.

#### 4.1.2 Milling Stone Horizon (6000–3000 B.C.)

Wallace (1955:219) defined the Milling Stone Horizon as "marked by extensive use of milling stones and mullers, a general lack of well-made projectile points, and burials with rock cairns." The dominance of such artifact types indicates a subsistence strategy oriented around collecting plant foods and small animals. A broad spectrum of food resources were consumed including small and large terrestrial mammals, sea mammals, birds, shellfish and other littoral and estuarine species, near-shore fishes, yucca, agave, and seeds and other plant products (Kowta 1969; Reinman 1964). Variability in artifact

collections over time and from the coast to inland sites indicates that Milling Stone Horizon subsistence strategies adapted to environmental conditions (Byrd and Raab 2007:220). Lithic artifacts associated with Milling Stone Horizon sites are dominated by locally available tool stone. In addition, ground stone tools, such as manos and metates, chopping, scraping, and cutting tools, are very common. Kowta (1969) attributes the presence of numerous scraper-plane tools in Milling Stone Horizon collections to the processing of agave or yucca for food or fiber. The mortar and pestle, associated with acorns or other foods processed through pounding, were first used during the Milling Stone Horizon and increased dramatically in later periods (Wallace 1955, 1978; Warren 1968).

Two types of artifacts that are considered diagnostic of the Milling Stone period are the cogged stone and discoidal, most of which have been found within sites dating between 4,000 and 1,000 B.C. (Moratto 1984:149), though possibly as far back as 5,500 B.C. (Couch et al. 2009). The cogged stone is a ground stone object that has gear-like teeth on the perimeter and is produced from a variety of materials. The function of cogged stones is unknown, but many scholars have postulated ritualistic or ceremonial uses (c.f., Dixon 1968:64-65; Eberhart 1961:367). Similar to cogged stones, discoidals are found in the archaeological record subsequent to the introduction of the cogged stone. Cogged stones and discoidals were often purposefully buried, or “cached.” They are most common in sites along the coastal drainages from southern Ventura County southward and are particularly abundant at some Orange County sites, although a few specimens have been found inland at Cajon Pass (Dixon 1968:63; Moratto 1984:149). Discoidals and cogged stones have been found together at some Orange County sites, such as CA-ORA-83/86/144 (Van Bueren et al. 1989:772) and Los Cerritos Ranch (Dixon 1975).

### 4.1.3 Intermediate Horizon (3,000 B.C. – A.D. 500)

The Intermediate Horizon, as defined by Wallace, dates from approximately 3,000 B.C.-A.D. 500 and is characterized by a shift toward a hunting and maritime subsistence strategy, as well as greater use of plant foods. During the Intermediate Horizon, a noticeable trend occurred toward greater adaptation to local resources including a broad variety of fish, land mammal, and sea mammal remains along the coast. Tool kits for hunting, fishing, and processing food and materials reflect this increased diversity, with flake scrapers, drills, various projectile points, and shell fishhooks being manufactured.

Mortars and pestles became more common during this transitional period, gradually replacing manos and metates as the dominant milling equipment. Many archaeologists believe this change in milling stones signals a change from the processing and consuming of hard seed resources to the increasing reliance on acorn (e.g., Glassow et al. 1988; True 1993). Mortuary practices during the Intermediate typically included fully flexed burials oriented toward the north or west (Warren 1968:2-3).

### 4.1.4 Late Prehistoric Horizon (A.D. 500–Historic Contact)

During Wallace’s (1955, 1978) Late Prehistoric Horizon the diversity of plant food resources and land and sea mammal hunting increased even further than during the Intermediate Horizon. More classes of artifacts were observed during this period and high quality exotic lithic materials were used for small

finely worked projectile points associated with the bow and arrow. Steatite containers were made for cooking and storage and an increased use of asphalt for waterproofing is noted. The largest steatite quarry in California was located on Santa Catalina Island and it was traded throughout southern California (Chartkoff and Chartkoff 1984:135). More artistic artifacts were recovered from Late Prehistoric sites and cremation became a common mortuary custom. Larger, more permanent villages supported an increased population size and social structure (Wallace 1955:223).

Warren (1968) attributes this dramatic change in material culture, burial practices, and subsistence focus to the westward migration of desert people he called the Takic, or Numic, Tradition in Los Angeles, Orange, and western Riverside counties. This Takic Tradition was formerly referred to as the "Shoshonean wedge" (Warren 1968), but this nomenclature is no longer used to avoid confusion with ethnohistoric and modern Shoshonean groups (Heizer 1978:5; Shipley 1978:88, 90). Modern Gabrielino/Tongva in Los Angeles County are generally considered by archaeologists to be descendants of these prehistoric Uto-Aztecan, Takic-speaking populations that settled along the California coast and southern Channel Islands during the Late Prehistoric Horizon.

## 4.2 Ethnographic Overview

The project area is in Gabrielino/Tongva territory (Bean and Smith 1978:538; Kroeber 1925: Plate 57), who arrived in the Los Angeles Basin around 500 B.C. Gabrielino/Tongva lands encompass the greater Los Angeles Basin and three Channel Islands: San Clemente, San Nicolas, and Santa Catalina. Their mainland territory is bound on the west by the Chumash at Topanga Creek, the Tatavium to the north, the Serrano at the San Gabriel Mountains in the east, the Cahuilla to the east, and the Juaneño on the south at Aliso Creek (Bean and Smith 1978:538; Kroeber 1925:636).

The name "Gabrieliño" or "Gabrieleño" takes its name from Mission San Gabriel, where it was the dominate language spoken by Native Americans who forced to convert (Golla 2011). Many modern Gabrieleño identify themselves and their language as the Tongva (King 1994; Golla 2011). Though the names "Tongva" or "Gabrieleño" are the most common names used by Native American groups today, other groups identify themselves differently, such as the Gabrielino Band of Mission Indians - Kizh Nation.

The Tongva language belongs to the Takic branch of the Uto-Aztecan language family, which can be traced to the Great Basin region (Mithun 2004). This language family includes dialects spoken by the nearby Juaneño and Luiseño but is considerably different from those of the Chumash people living to the north and the Diegueño (including Ipai, Tipai, and Kumeyaay) people living to the south of the Tongva, Juaneño, and Luiseño. Tongva society was organized along patrilineal non-localized clans, a common Takic pattern. Each clan had a ceremonial leader and contained several lineages.

The Gabrielino/Tongva established large, permanent villages in the fertile lowlands along rivers and streams, and in sheltered areas along the coast, stretching from the foothills of the San Gabriel Mountains to the Pacific Ocean. As the population expanded, the larger permanent villages established

satellite communities that stayed connected via economic, religious, and social ties. Structures within the village were typically large, circular, domed structures made of willow poles thatched with tule, fern, or carrizo. Other structures found in Gabrielino villages included sweathouses, menstrual huts, and a ceremonial enclosure (Bean and Smith 1978).

The Gabrielino/Tongva subsistence economy was centered on gathering and hunting. Bluff and estuary coastal villages were clustered in the Palos Verdes Peninsula and San Pedro shore and estuary areas. Offshore fishing from plank canoes was carried out, along with inshore fishing and shellfish gathering. Both shell hooks and nets were used in obtaining fish which were dried for storage (McCawley 1996:62–71, 122–127). Hunting of sea mammals was also practiced with harpoons, spear throwers, and clubs (Bean and Smith 1978). On Santa Catalina Island, major food sources consisted of marine animals, including fish, shellfish, and marine mammals, and were reflected by a specialized maritime economy (Bean and Smith 1978).

A wide variety of tools and implements were employed by the Gabrielino/Tongva to gather and collect food resources. Fishing involved the use of line and hooks, nets, basketry traps, spears, and bow and arrows. Mammal hunting was accomplished using bow and arrows, deadfalls, snares, traps, throwing sticks (Bean and Smith 1978). Food was processed with a variety of tools, including portable and bedrock mortars, pestles, basket hopper mortars, manos and metates, hammerstones and anvils, woven strainers and winnowers, leaching baskets and bowls, woven parching trays, knives, bone saws, and wooden drying racks. Food was stored in large, finely woven baskets, and the unprocessed acorns were stored in large granaries woven of willow branches and raised off the ground on platforms. Food was consumed from various woven and carved wood vessels (McCawley 1996).

Santa Catalina Island soapstone or steatite was a high value material due in part to its adaptability, heat resistance, and its function in regional exchange networks. While this material is also present on the mainland, Santa Catalina Island was the primary source for soapstone in the region. It was used to make a wide range of items including beads, bowls, *comales* (cooking pots), and effigies. Santa Catalina soapstone has been found in Middle Holocene sites throughout the Channel Islands. Soapstone, in combination with the island's abundance of shellfish, was a critical component of exchange networks (Rick et al. 2005).

Deceased Gabrielino were either buried or cremated, with inhumation more common on the Channel Islands and the neighboring mainland coast, and cremation predominating on the remainder of the coast and in the interior (McCawley 1996:157).

### 4.3 Historic Overview

The post-European contact history of California is generally divided into three periods: the Spanish period (1769-1822), the Mexican period (1822-1848), and the American period (1848-present). Each of these periods is briefly described below.

### 4.3.1 Spanish Period (1769–1822)

In 1542, Juan Rodriguez Cabrillo led the first European expedition to observe what is now called southern California. For more than 200 years, Cabrillo and other Spanish, Portuguese, British, and Russian explorers sailed the Alta (upper) California coast and made limited inland expeditions, but they did not establish permanent settlements (Bean 1968; Rolle 2003). Gaspar de Portolá and Franciscan Father Junípero Serra established the first Spanish settlement in Alta California at Mission San Diego de Alcalá in 1769. This was the first of 21 missions erected by the Spanish between 1769 and 1823.

Spain deeded ranchos to prominent citizens and soldiers, though few in comparison to what was subsequently granted by the Mexican government. To manage and expand herds of cattle on these large ranchos, colonists enlisted the labor of the surrounding Native American population (Engelhardt 1927a). The missions were responsible for administering the local people as well as converting the population to Christianity (Engelhardt 1927b). Inevitably, this increased local population density and contact with diseases brought by Europeans greatly reduced the Native American population (McCawley 1996). On October 7, 1542, Juan Rodriguez Cabrillo sailed into Avalon Bay initially named Santa Catalina Island “Isla San Salvador” after his flagship and claimed the island for Spain (Federal Writers’ Project 1954:424; Wlodarski 2010:6). General Sebastian Vizcaino arrived at San Salvador on November 28, 1602, and, believing himself the “discoverer,” named the island Santa Caterina (later Catalina) after the Catholic Saint Catherine, whose feast day it was when he landed.

### 4.3.2 Mexican Period (1822–1848)

The Mexican period commenced when news of the success of the Mexican Revolution (1810-1821) against the Spanish crown reached California in 1822. This period saw extensive interior land grant development as well as exploration west of the Sierra Nevada Mountains by American fur trappers. The California missions declined in power and were ultimately secularized in 1834. The hallmark of the Mexican period was large ranchos deeded to prominent Mexican citizens, frequently soldiers, by the governor. During the late Spanish and Mexican periods Native Americans were encouraged to settle at the missions on the mainland. From 1824 until his death in 1854, Samuel Prentiss lived on Santa Catalina Island in a futile search for buried treasure, thereby becoming the first person of European descent to live on the island (Wlodarski 2010:6). Tomas Robbins became set on possessing Santa Catalina during the governorship of Don Juan Batista Alvarado, but never secured ownership until Governor Don Pio Pico signed his grant deed on July 4, 1846, as his last act of governorship. Robbins deed was upheld in 1857 by a U.S. District Court (Wlodarski 2010:6).

### 4.3.3 American Period (1848–Present)

The American Period officially began with the signing of the Treaty of Guadalupe Hidalgo in 1848, in which the United States agreed to pay Mexico \$15 million for the conquered territory, including California, Nevada, Utah, and parts of Colorado, Arizona, New Mexico, and Wyoming. In 1850, California was admitted to the Union as the 31st state. The discovery of gold in northern California in

1848 led to the California Gold Rush, though the first significant California gold was discovered in Placerita Canyon near the San Fernando Mission in 1842 (Guinn 1977) and gold bearing quartz had been discovered even earlier on Santa Catalina, by Captain George Calvert Yount in 1830 (Wlodarski 2010:7). Significant gold was found on Catalina Island in 1863 but the island's owner since 1855, José María Covarrubias, objected to the prospectors' activities. The island's "gold rush" was over quickly when the gold ran out (Federal Writers' Project 1954).

After the completion of the transcontinental railroad in 1869, thousands more settlers and immigrants began to migrate to southern California at the urgings of land speculators and developers. Santa Catalina Island passed through a series of owners during the mid-1800s until James Lick took possession circa 1867. In 1874 Lick evicted the numerous squatter/ranchers from the island, many of whom did not previously know the island was privately owned (Wlodarski 2010:7). Lick sold the island to George Shatto in August 1887 for \$200,000, which began the development of a townsite that would become Avalon (Dumke 1970 [1944]:74).

#### 4.3.4 Historical Development of Avalon

Avalon began as an encampment called "Timm's Landing" until George Shatto and Charles Sumner purchased the island in 1887. That same year, the townsite was laid out and renamed Avalon, with the Hotel Metropole being the first building constructed. In addition to the construction of the first hotel on the island, Shatto also constructed the first pier with the intention of turning the island into a tourist destination.

While Shatto's financial situation did not allow his vision to come to fruition, in 1891, William Banning purchased the island from Shatto. Following their purchase of the island, he and his brothers formed the Santa Catalina Island Company in 1892. Once established the Santa Catalina Island Company began to quickly develop Avalon and promote the new resort concept. Contributions from the development company included an incline railway, Buena Vista Park, aquarium, amphitheater, and glass bottom boat tours. The company also provided transportation to the island. All of these developments contributed to the early success of Avalon (Holder 1895; Pedersen 2006; Mallan 1984).

Avalon was officially incorporated as a city in 1913, but the initial success of the City came to a halt when a massive fire destroyed much of the town in 1915. In the aftermath of the fire, the Banning brothers attempted to rebuild, but the financial loss was too substantial. In 1919, the brothers sold controlling interest in their company to chewing gum magnate William Wrigley, Jr. Wrigley's purchase set the stage for a new period of development on the island that was on a much larger scale than previous efforts (Holder 1895; Mallan 1984; Pedersen 2006; Guhan 2007).

Wrigley spared no expense on the promotion of the island and its redevelopment following the fire. His contributions included the establishment of public utilities (e.g. telephone service), several hotels, construction of the Catalina Country Club in 1921 and construction of the Catalina Casino in 1929. Wrigley also built the Island Villas to replace the ever-growing tent city that was erected every summer

when visitors arrived on the island. These changes help to establish permanence on the island and led to continued growth and development throughout the 20th Century (Holder 1895; Mallan 1984; Pedersen 2006; Otte and Pedersen 2007).

When William passed away in 1932, his son Philip K. Wrigley continued and expanded his father's vision for the island. One of the key components of Philip's plan for the island was the re-design of Avalon. To assist him in this undertaking, he employed designers Otis and Dorothy Shepherd (Otte and Pedersen 2007). The ambitious plan included the re-design of Avalon, including the shoreline to enhance the visitor experience. The aesthetic theme he chose was referred to as Early California. To achieve this concept, Philip tasked the designers with everything from architectural styles, color palates, plantings, streetscapes, marketing materials, and way finding systems (Guhan 2007, Otte and Pedersen 2007). The development included several major construction and infrastructure projects including the construction of the pedestrian walkway along Crescent Avenue, construction of the seawall, construction of dams, and improvements in public utilities (Mallan 1984; Otte and Pedersen 2007).

Following the onset of World War II, the island changed dramatically and was closed to tourists after the 1941 attack on Pearl Harbor. Following the closure of the island to tourists, unused transport steamships were repurposed for use as military troop transports. During this time several branches of the military began to utilize the island as a training ground and operations location. United States military organizations that used the island during this time included the Coast Guard, Army Signal Corps., Maritime Service, and the Office of Strategic Services (later the CIA). The island was used until the end of the war and at the time reopened to tourists (Otte and Pedersen 2007).

The next significant development in Avalon occurred in the late 1960s with the construction of the Cabrillo Mole Terminal. Prior to the construction of the Terminal, there were two piers on Avalon: the Pleasure Pier and the Steamer Pier. In the initial plans from 1967, the intention was to remove both of the existing piers and replace them with the new terminal (Anaheim Bulletin 1967) Despite public outcry, the Steam Pier was demolished, but the Pleasure Pier was not (Press-Telegram 1969). The construction of the Terminal allowed for more people to visit the island and also led to a redevelopment in the area to support the new paths of circulation created by the Terminal and its associated infrastructure.

During the mid-to-late twentieth century, the City of Avalon continued to grow with its density and spread limited largely by the natural topography. Today the City has a diverse historic built environment with Period Revival homes, vernacular cottages, commercial buildings, and picturesque walkways along the water. Avalon remains the only incorporated city on the island and provides many activities, dining, housing, entertainment options, and continues to be a popular tourist destination.

## 5 Background Research

### 5.1 CHRIS Records Search

On May 2, 2024, South Environmental conducted a cultural resources records search of the project site and a one-half (0.5)-mile search radius at the South Central Coastal Information Center (SCCIC), which houses cultural resources records for Los Angeles County. This search included their collections of mapped prehistoric and historic archaeological resources and historic built-environment resources, State of California Department of Parks and Recreation Series 523 forms (DPR forms), technical reports, archival resources, and ethnographic references. Additional consulted sources include historical maps of the study area, the NRHP, the CRHR, the lists of California State Historical Landmarks, California Points of Historical Interest, and the Archaeological Determinations of Eligibility list. A summary of the results of the records search is presented in Appendix A.

#### 5.1.1 Previously Conducted Cultural Resource Studies

The SCCIC records search results indicate that one previously conducted cultural resource study intersects the project site. Seven previous studies were overview studies conducted of the entire island. A summary of these studies is provided following Table 1. An additional 13 studies identified were outside the project site within the one-half-mile records search radius. A list of all previously conducted studies identified within the records search radius is provided in Table 1.

**Table 1. Previous Cultural Resources Investigations Within 0.5-Mile of the Project Site**

SCCIC Report Number	Author	Year	Report Title	Proximity to Project Site
LA-00070	Leonard, Nelson N. III	1974	Archaeological Reconnaissance of the Proposed Bahia Vista Development, Avalon, Calif.	Outside (Approx. 0.45 mi south of site)
LA-02373	Wlodarski, Robert J.	1991	A Phase 1 Archaeological and Architectural-Historical Study for the Bird Park and Descanso Beach Sites, Santa Catalina Island, Los Angeles County, California	Outside (Approx. 0.20 mi north of site)
LA-02457	Douglas, Ronald D.	1980	Archaeological Resource Assessment Las Casitas Hotel Expansion Site, Avalon, Santa Catalina Island, California	Outside (Approx. 0.45 mi south of site)
LA-02504	Wlodarski, Robert J.	1991	An Addendum Phase 1 Archaeological Study for a Pedestrian Walkway and Restaurant, Santa Catalina Island, Los Angeles County, California	Outside (Approx. 0.15 mi north of site)
LA-02666	Wlodarski, Robert J.	1979	Ralph Glidden's Catalina Investigations	Overview
LA-02672	Wlodarski, Robert J.	1978	Ralph Gidden History Museum and Collection	Overview

**Table 1. Previous Cultural Resources Investigations Within 0.5-Mile of the Project Site**

SCCIC Report Number	Author	Year	Report Title	Proximity to Project Site
LA-02855	Schumacher, Paul	1963	Ancient Olla Manufactory on Santa Catalina Island, California - Reports of the University of California Archaeological Survey- no. 59,	Overview
LA-04247	Maki, Mary K.	1998	Phase I Archaeological Reconnaissance of Approximately 115 Acres for the Avalon Golf Course Expansion Project, Santa Catalina Island, Los Angeles County, California	Outside (Approx. 0.50 mi south of site)
LA-08463	Strudwick, Ivan H., Roderic McLean, Jay Michalsky, Brooks Mith, and Joseph Baumann	2007	A Glimpse of the Past on Pimu, Cultural Resource Survey of Selected Areas on Santa Catalina Island, Los Angeles County, California	Outside (Approx. 265 ft south of site)
LA-09886	Strudwick, Ivan H., Joseph E. Baumann, and Daniel Ewers	2008	Santa Catalina Island: Lay of the Land	Overview
LA-09887	Strudwick, Ivan H.	2008	Results of an Archaeological Survey of SCE Power Poles Across 51 Miles of Santa Catalina Island	Overview
LA-09888	Strudwick, Ivan H.	2008	The Development of Southern California Edison on Santa Catalina Island	Overview
LA-09889	Strudwick, Ivan H.	2008	A Brief Prehistory and History of Santa Catalina Island	Overview
LA-10018	Shepard, Richard S.	2003	Cultural Resources Constraints Assessment: Approximately 300-acre "project Cat," City of Avalon, Los Angeles County, California.	Outside (Approx. 0.30 mi north of site)
LA-11138	Pierson, Larry, Gerald Shiner, and Richard Slater	1987	California Outer Continental Shelf, Archaeological Resource Study: Morro Bay to Mexican Border, Final Report.	<b>WITHIN</b>
LA-12252	Bonner, Wayne and Kathleen Crawford	2013	Cultural Resources Records Search and Site Visit Results for AT&T Mobility, LLC Candidate LA0570 (Avalon) Chimes Tower Road, Avalon, Los Angeles County, California	Outside (Approx. 0.13 mi NW of site)
LA-12732	Bonner, Wayne	2013	Cultural Resources Records Search and Site Visit Results for AT&T Mobility, LLC Candidate LA0570® (Chimes Tower Rd/Avalon) St Catherine's Road, Avalon, Los Angeles County, California, CASPR No 3551455024	Outside (Approx. 0.20 mi NW of site)
LA-12765	Harper, Caprice	2014	Historic Resources Evaluation Report of the Beacon Street Shower Building Prepared for the Vons #3280 Project Area, City of Avalon, Los Angeles County, California	Outside (Approx. 0.25 mi south of site)
LA-13223	Corbett, Ray and Richard Guttenberg	2016	Cultural Resources Monitoring Report for the 217 Metropole Ave. (Catalina Island Museum) Sewer Line Project City of Avalon, Santa Catalina Island	Outside (Approx. 0.20 mi south of site)
LA-13240	Newcomb, Alyssa, Sara Dietler, William Kendig, and John Dietler	2017	Archaeological Monitoring and Data Recovery for Southern California Edison's Catalina Gas Line Emergency Project on Crescent Avenue City of Avalon, Los Angeles County, Santa Catalina Island, California	Outside (Approx. 0.17 mi south of site)



**Table 1. Previous Cultural Resources Investigations Within 0.5-Mile of the Project Site**

SCCIC Report Number	Author	Year	Report Title	Proximity to Project Site
LA-13457	Dietler, John and Sara Dietler	2017	Before Avalon, The Southern California Edison Catalina Metropole Vault Replacement Project, Avalon, Santa Catalina Island, California	Outside (Approx. 0.13 mi south of site)

### LA-011138

*California Outer Continental Shelf, Archaeological Resource Study: Morro Bay to Mexican Border, Final Report* (Pierson et al 1987). This report presented a database and predictive modeling for offshore prehistoric sites and shipwrecks along the southern California coast and Channel Islands. The report identified no resources within or near the current project APE.

### 5.1.2 Previously Recorded Cultural Resources

The SCCIC records search results indicate that no previously recorded sites overlap the project site. Ten (10) previously recorded cultural resources were identified within the 0.5-mile records search area. A list of all previously recorded resources identified within the records search radius is provided in Table 2.

**Table 2. Previously Recorded Cultural Resources Within 0.5-Mile of the Project Site**

Primary Number	Trinomial	Resource Description	Resource Eligibility	Recorded by and Year	Proximity to Project Site
P-19-002678	CA-LAN-002678H	Avalon Golf Course stone retaining walls	Insufficient information	1998 (Mary Maki, Larry Carbone, Conejo Archaeological Consultants)	Outside (Approx. 0.50 mi south of site)
P-19-003531	CA-LAN-003531H	Santa Catalina Island, Group B, Site 8; Remains of the Avalon to Lovers Cove Incline Scenic Railway	Insufficient information	2005 (Ivan Strudwick, Joe Baumann, Brooks Smith, LSA Associates, Inc)	Outside (Approx. 0.40 mi SE of site)
P-19-003712	CA-LAN-003712/H	CA-SCAI-29; Large prehistoric habitation site	Insufficient information	2005 (Ivan Strudwick, Maria Aron, LSA Associates, Inc); 2016 (A. Newcomb, SWCA); 2016 (Alyssa Newcomb, SWCA); 2016 (Alyssa Newcomb, SWCA); 2017 (John Dietler, SWCA)	Outside (Approx. 0.15 mi south of site)



**Table 2. Previously Recorded Cultural Resources Within 0.5-Mile of the Project Site**

Primary Number	Trinomial	Resource Description	Resource Eligibility	Recorded by and Year	Proximity to Project Site
P-19-004747	CA-LAN-004747H	CWA1370-S-002H; Buried thin historic refuse deposit, likely secondary deposition	Insufficient information	2016 (Omar Rice, SWCA)	Outside (Approx. 0.40 mi south of site)
P-19-004748	CA-LAN-004748H	CWA1370-S-003H; Buried thin historic refuse deposit, likely secondary deposition	Insufficient information	2016 (Omar Rice, SWCA)	Outside (Approx. 0.40 mi south of site)
P-19-004895	CA-LAN-004895/H	Crescent St at Catalina Ave multicomponent archaeological site, secondary deposition	Insufficient information	2015 (Ray Corbett, JMA)	Outside (Approx. 0.25 mi SE of site)
P-19-178670	N/A	William Wrigley Jr Summer Cottage; 76 Wrigley Road	NRHP listed, CRHR listed	1984 (R. Hatheway & R. Starzak, Roger Hatheway & Associates)	Outside (Approx. 0.45 mi SE of site)
P-19-178671	N/A	Peter Gano House/Lookout Cottage (constructed 1890); 718 Crescent Avenue	NRHP listed, CRHR listed	1983 (P.A. Moore, Catalina Island Museum Society)	Outside (Approx. 0.30 mi SE of site)
P-19-180701	N/A	Tuna Club of Avalon (constructed 1916); 100 St. Catherine Way	California Historical Landmark, NRHP and CRHR listed	1990 (C. Davis & A. Herbold, Tuna Club of Avalon)	Outside (Approx. 170 ft south of site)
P-19-190939	N/A	Beacon Street Shower Building	6Z; Found NRHP and CRHR ineligible	2014 (K. Harper and B. Glenn, Pacific West Archaeology, Inc)	Outside (Approx. 0.30 mi south of site)

## 5.2 Native American Scoping

A Native American Heritage Commission (NAHC) Sacred Lands File search was requested by South Environmental on May 3, 2024. The NAHC responded to the request on May 30, 2024, and reported positive results. The NAHC recommended contacting the Native American tribes listed in Table 3, for additional information or knowledge they may have regarding the presence of cultural resources that may be impacted by the proposed project. On May 3 and May 30, 2024, South Environmental sent letters to each contact provided by the NAHC and made a follow-up outreach attempt on June 20, 2024, to those who had yet to respond.

As detailed in Table 3, four tribal groups have responded to the outreach letters to date. No archaeological, historical, or tribal cultural resources were identified within the project site as a result of South Environmental’s coordination with tribes, however the project site and the South Beach area have been identified as being located within ancestral territory, in the vicinity of sacred sites, and the immediate area was identified as culturally sensitive/significant (see Table 3 below). The Gabrieleño Band of Mission Indians - Kizh Nation, Gabrielino Tongva Indians of California Tribal Council, and the Rincon Band of Luiseño Indians have requested to consult with the lead agency. The Santa Ynez Band of Chumash Indians have acknowledged the high sensitivity of the surrounding area, but agreed that due to the amount previous disturbance within the project site, monitoring is not necessary. The Gabrielino Tongva Indians of California Tribal Council and Rincon Band of Luiseño Indians have requested to have a tribal monitor present during all soil disturbing activities. All Native American outreach completed by South Environmental is documented in Appendix B.

**Table 3. Summary of Native American Outreach**

Native American Tribal Contact	Method of Notification/Date	Response Received
Gabrieleño Band of Mission Indians - Kizh Nation Christina Swindall Martinez, Secretary P.O. Box 393 Covina, CA 91723 Phone: (844) 390-0787 Email: admin@gabrielenoindians.org	Emailed on May 31, 2024.	Received a response via email on June 12, 2024:  “Thank you for your letter dated May 31st. Can you please provide the lead contact information for this project?”
Gabrieleño Band of Mission Indians - Kizh Nation Andrew Salas, Chairperson P.O. Box 393 Covina, CA 91723 Phone: (626) 926 - 4131 Email: admin@gabrielenoindians.org	Emailed on May 3, 2024.	Received a response via email on June 12, 2024. See Above.
Gabrieleño/Tongva San Gabriel Band of Mission Indians Anthony Morales, Chairperson P.O. Box 693 San Gabriel, CA 91778 Phone: (626) 483 – 3564 Fax: (626) 286-1262 Email: GTTribalcouncil@aol.com	Emailed on May 3, 2024 and June 20, 2024.	No response received to date.

**Table 3. Summary of Native American Outreach**

Native American Tribal Contact	Method of Notification/Date	Response Received
Gabrielino Tongva Indians of California Tribal Council Christina Conley, Cultural Resource Administrator P.O. Box 941078 Simi Valley, CA 93094 Phone: (626) 407-8761 Email: christina.marsden@alumni.usc.edu	Emailed on May 31, 2024.	Received a response via email on May 31, 2024:  "This area is highly sensitive for cultural resources. We will need our tribal monitor there for ALL ground disturbances. Please keep me informed on the status."
Gabrielino/Tongva Nation Sandonne Goad, Chairperson 106 1/2 Judge John Aiso St., #231 Los Angeles, CA 90012 Phone: (951) 807 - 0479 Email: sgoad@gabrielino-tongva.com	Emailed on May 3, 2024 and June 20, 2024.	No response received to date.
Gabrielino Tongva Indians of California Tribal Council Robert Dorame, Chairperson P.O. Box 490 Bellflower, CA 90707 Phone: (562) 761 - 6417 Fax: (562) 761-6417 Email: gtongva@gmail.com	Emailed on May 3, 2024.	Received a response via email on May 7, 2024:  "We are in receipt of your project location and are highly concerned with respect to tribal cultural resources that are there. Please let us know of your next steps and we will need to be there to monitor the ground disturbances."
Gabrielino-Tongva Tribe Charles Alvarez, Tribal Chairman 23454 Vanowen Street West Hills, CA 91307 Phone: (310) 403 - 6048 Email: calvarez1@gabrielinotribe.org	Emailed on May 3, 2024 and June 20, 2024.	No response received to date.
Gabrielino-Tongva Tribe Sam Dunlap, Cultural Resource Director P.O. Box 3919 Seal Beach, CA 90740 Phone: (909) 262-9351 Email: tongvatcr@gmail.com	Emailed on May 31, 2024 and June 20, 2024.	No response received to date.
Juaneño Band of Mission Indians Acjachemen Nation 84A Heidi Lucero, Chairperson, THPO 31411-A La Matanza Street San Juan Capistrano, CA 92675 Phone: (562) 879-2884 Email: jbmian.chairwoman@gmail.com	Emailed on May 31, 2024 and June 20, 2024.	No response received to date.

**Table 3. Summary of Native American Outreach**

Native American Tribal Contact	Method of Notification/Date	Response Received
Pechanga Band of Indians Steve Bodmer, General Counsel for Pechanga Band of Indians P.O. Box 1477 Temecula, CA 92593 Phone: (951) 770-6171 Fax: (951) 695-1778 Email: sbodmer@pechanga-nsn.gov	Emailed on May 31, 2024 and June 20, 2024.	No response received to date.
Pechanga Band of Indians Tuba Ebru Ozdil, Pechanga Cultural Analyst P.O. Box 2183 Temecula, CA 92593 Phone: (951) 770-6313 Fax: (951) 695-1778 Email: eozdil@pechanga-nsn.gov	Emailed on May 31, 2024 and June 20, 2024.	No response received to date.
Pechanga Band of Luiseño Indians Paul Macarro, Cultural Resources Coordinator P.O. Box 1477 Temecula, CA 92593 Phone: (951) 770 - 6306 Fax: (951) 506-9491 Email: pmacarro@pechanga-nsn.gov	Emailed on May 3, 2024.	Read receipt received May 3, 2024.
Pechanga Band of Luiseño Indians Mark Macarro, Chairperson P.O. Box 1477 Temecula, CA 92593 Phone: (951) 770 - 6000 Fax: (951) 695-1778 Email: epreston@pechanga-nsn.gov	Emailed on May 3, 2024.	No response received to date.

**Table 3. Summary of Native American Outreach**

Native American Tribal Contact	Method of Notification/Date	Response Received
<p>Rincon Band of Luiseño Indians                      Cheryl Madrigal, Tribal Historic Preservation Officer                      One Government Center Lane                      Valley Center, CA 92082                      Phone: (760) 297 - 2635                      Email: crd@rincon-nsn.gov</p>	<p>Emailed on May 3, 2024.</p>	<p>Response received via email on June 3, 2024: "This letter is written on behalf of the Rincon Band of Luiseño Indians ("Rincon Band" or "Tribe"), a federally recognized Indian tribe and sovereign government. We have received your notification regarding the above referenced project and we thank you for the opportunity to consult on the project. The identified location is within the Traditional Use Area of the Luiseño people and within the Tribe's specific Area of Historic Interest (AHI). As such, the Rincon Band is traditionally and culturally affiliated to the project area.</p> <p>After review of the provided documents and our internal information, the Rincon Band has specific concerns that the project may impact tangible Tribal Cultural Resources. The project site is culturally sensitive, with many resources and known gathering areas. At this time the Rincon Band would like to consult directly with the lead agency, to review any potential impacts in this project site."</p>
<p>Rincon Band of Luiseño Indians                      Bo Mazzetti, Chairperson                      One Government Center Lane                      Valley Center, CA 92082                      Phone: (760) 749 - 1051                      Fax: (760) 749-5144                      Email: BoMazzetti@rincon-nsn.gov</p>	<p>Emailed on May 3, 2024.</p>	<p>Response received by Rincon Band of Luiseño Indians via email on June 3, 2024. See entry above.</p>
<p>Rincon Band of Luiseño Indians                      Joseph Linton, Tribal Council/Culture Committee Member                      One Government Center Lane                      Valley Center, CA 92082                      Phone: (760) 803-3548                      Email: jlinton@rincon-nsn.gov</p>	<p>Emailed on May 31, 2024.</p>	<p>Response received by Rincon Band of Luiseño Indians via email on June 3, 2024. See entry above.</p>

**Table 3. Summary of Native American Outreach**

Native American Tribal Contact	Method of Notification/Date	Response Received
Rincon Band of Luiseño Indians Laurie Gonzalez, Tribal Council/Culture Committee Member One Government Center Lane Valley Center, CA 92082 Phone: (760) 484-4835 Email: lgonzalez@rincon-nsn.gov	Emailed on May 31, 2024.	Response received by Rincon Band of Luiseño Indians via email on June 3, 2024. See entry above.
Rincon Band of Luiseño Indians Denise Turner Walsh, Attorney General One Government Center Lane Valley Center, CA 92082 Phone: (760) 689-5727 Email: dwalsh@rincon-nsn.gov	Emailed on May 31, 2024.	Response received by Rincon Band of Luiseño Indians via email on June 3, 2024. See entry above.
Santa Ynez Band of Chumash Indians Wendy Teeter, Cultural Resources Archaeologist 100 Via Juana Road Santa Ynez, CA 93460 Phone: (805) 325-8630 Email: wteeter@chumash.gov	Emailed on May 31, 2024 and June 20, 2024.	Response received on July 24, 2024:  South Environmental Cultural Resources Director, Samantha Murray, MA, RPA spoke with Dr. Wendy Teeter via a virtual meeting. Ms. Murray provided an overview of the project and Dr. Teeter provided an overview of the high sensitivity surrounding the project site. Dr. Teeter agreed that because the project site is heavily disturbed by existing concrete piers in the water, it has a low potential to disturb any intact cultural resources.
Santa Ynez Band of Chumash Indians Crystal Mendoza, Elders' Council Administrative Assistant 100 Via Juana Road Santa Ynez, CA 93460 Phone: (805) 325-5537 Email: cmendoza@chumash.gov	Emailed on May 31, 2024 and June 20, 2024.	Response on behalf of the Santa Ynez Band of Chumash Indians received on July 24, 2024. See above entry.
Santa Ynez Band of Chumash Indians Sam Cohen, Government & Legal Affairs Director 100 Via Juana Road Santa Ynez, CA 93460 Email: scohen@chumash.gov	Emailed on May 31, 2024 and June 20, 2024.	Response on behalf of the Santa Ynez Band of Chumash Indians received on July 24, 2024. See above entry.

**Table 3. Summary of Native American Outreach**

Native American Tribal Contact	Method of Notification/Date	Response Received
Santa Ynez Band of Chumash Indians Nakia Zavalla, Tribal Historic Preservation Officer 100 Via Juana Road Santa Ynez, CA 93460 Email: nzavalla@chumash.gov	Emailed on May 31, 2024 and June 20, 2024.	Response on behalf of the Santa Ynez Band of Chumash Indians received on July 24, 2024. See above entry.

### 5.3 Review of Historic Aerial Photographs

A review of historical aerial photographs was conducted to better understand the history of the project site and any past disturbances. Aerial photographs were available from the following years: 1953, 1981, 1994, 2002, 2005, 2009, 2010, 2012, 2014, 2016, 2017, and 2020 (NETR 2024); 1943, 1950, 1952, 1965, 1970, 2011 (UCSB 2024). The earliest available aerial photograph of the subject property is from 1943.

Historic aerial photographs indicate that the area around the project site has remained relatively unchanged since the 1950s. The seawall and sidewalk, along with the Tuna Club to the south and the Catalina Island Yacht Club to the north are all visible in the 1953 aerial photograph, however, the dock between the club buildings is not present. The dock structure first appears in the 1981 photograph. By 1994, the dock was lengthened and expanded to include two perpendicular moorings to accommodate more vessels. In 2010, the perpendicular moorings are removed but two new perpendicular moorings appear in 2014 and are extended by 2016. In the 2020 photograph, all extensions and moored vessels are gone.

## 6 Cultural Resources Survey

---

### 6.1 Methods

On May 10, 2024, Archaeologist Samantha Jovanovic, MS, of South Environmental conducted an intensive-level survey of the project site. Fieldwork included taking field notes, photographs using an iPhone 12 camera, and examination of close-scale field maps. Access to the structure was limited so the site was inspected from the sidewalk above the area in question (Photographs 1-7). Areas with exposed ground surface were examined for the presence of prehistoric artifacts (e.g., flaked stone tools, tool-making debris, stone milling tools), historical artifacts (e.g., metal, glass, ceramics), sediment discolorations that might indicate the presence of a cultural midden, depressions, and other features that might indicate the former presence of structures or buildings (e.g., post holes, foundations).



**Photograph 1. Site overview of dock and adjacent sidewalk with Tuna Club in background; view to southeast.**



**Photograph 2. Site overview of dock and adjacent sidewalk with Catalina Island Yacht Club in background; view to north.**



**Photograph 3. South side of dock pilings; view to north.**



**Photograph 4. North side of dock pilings; view to southeast.**



**Photograph 5. North side of dock attachment to seawall; view to south.**



**Photograph 6. Attachment of dock to seawall; view to east.**



**Photograph 7. Overview of dock from sidewalk; view to northeast.**

## 6.2 Results

The project site contains one dock pier set between the Tuna Club to the south and the Catalina Island Yacht Club to the north. The dock has four wood pylons and is attached to the seawall with a hinge. There were no moorings or vessels attached to the dock at the time of the survey. The rocks around the seawall and at the base of the dock appear to be composed of locally sourced boulders and large blocks of concrete with large gravel and cobble inclusions. No archaeological resources were identified within the project site as a result of the intensive-level survey.

## 7 Findings and Recommendations

---

### 7.1 Summary of Findings

No archaeological resources were identified within the project APE, as a result of the CHRIS records search, NAHC Sacred Lands File search and Native American scoping, or pedestrian survey by a qualified archaeologist. Still, review of the SCCIC records search results, archaeological literature, receipt of a positive Sacred Lands File search from the NAHC, and responses from Native American contacts indicates that the project site is in an area that is sensitive for prehistoric archaeological resources. However, historic aerial photographs of the project site confirm that the upper levels of soil within the project site were previously disturbed by construction and development of the existing shoreline. Further, the project site is in a heavily disturbed area that has already been impacted by the installation of the existing club dock. Nonetheless, it is always possible to encounter resources during project-related ground disturbance. Standard unanticipated discovery measures for archaeological resources and human remains are provided below. With implementation of these regulatory requirements, the proposed project would result in no adverse effects to historic properties under Section 106 of the NHPA and a less than significant impact to historical resources under CEQA.

### 7.2 Recommendations

#### 7.2.1 Unanticipated Discovery of Cultural Resources

Should archaeological resources (sites, features, or artifacts) be exposed during construction activities for the proposed project, the workers shall halt all construction work occurring within 100 feet of the find until a qualified archaeologist, meeting the Secretary of the Interior's Professional Qualification Standards, can evaluate the significance of the find. Depending on the significance of the find, the archaeologist may simply record the find and allow work to continue. In the event that an identified cultural resource is of Native American origin, the qualified archaeologist will consult with the project Applicant and the City of Avalon to implement Native American consultation procedures. If the discovery proves significant under CEQA or Section 106 of the NHPA, additional work such as preparation of an archaeological treatment plan, testing, or data recovery may be warranted.

#### 7.2.2 Unanticipated Discovery of Human Remains

In accordance with Section 7050.5 of the California Health and Safety Code, if human remains are found, the County Coroner shall be notified within 24 hours of the discovery. No further excavation or disturbance of the site or any nearby area reasonably suspected to overlie adjacent remains shall occur until the County Coroner has determined, within two working days of notification of the discovery, the appropriate treatment and disposition of the human remains. If the remains are determined to be Native American, the Coroner shall notify the NAHC in Sacramento within 24 hours. In accordance with California Public Resources Code, Section 5097.98, the NAHC must immediately notify those persons

it believes to be the Most Likely Descendant (MLD) from the deceased Native American. The MLD shall complete their inspection within 48 hours of being granted access to the site. The MLD would then determine, in consultation with the property owner, the disposition of the human remains.

## 8 References

---

- Anaheim Bulletin 1967. "Changes in Harbor at Avalon Initial Step in Development". July 29, 1967. Accessed online June 2024 via newspapers.com
- Arnold, Jeanne E., Michael R. Walsh, and Sandra E. Hollimon. 2004. The Archaeology of California. *Journal of Archaeological Research* Vol. 12, No. 1.
- Avalon, City of. 2013. City of Avalon 2030 General Plan/Local Coastal Plan Final. Prepared by City of Avalon, Avalon Community Improvement Agency June 2013. Electronic document <https://www.cityofavalon.com/DocumentCenter/View/184/City-of-Avalon-General-Plan-Local-Coastal-Plan-PDF>, accessed May 6, 2024.
- Bean, Walton. 1968. *California: An Interpretive History*. McGraw-Hill Book Company, New York.
- Bean, Lowell John and Charles R. Smith. 1978. Gabrielino. In *California*, edited by Robert F. Heizer, pp. 538-549. *Handbook of North American Indians*, Vol. 8, W.C. Sturtevant, general editor, Smithsonian Institution, Washington, D.C.
- Boundy-Sanders, Susan Q., John G. Vedder, Christopher O. Sanders, and David G. Howell. 1993. Miocene Geologic History of Eastern Santa Catalina Island, California. Third California Islands Symposium. In print. Available at: [https://sbbotanicgarden.org/wp-content/uploads/2022/08/Boundy-Sanders\\_et-al-1993-Miocene\\_Geology\\_Catalina-Island.pdf](https://sbbotanicgarden.org/wp-content/uploads/2022/08/Boundy-Sanders_et-al-1993-Miocene_Geology_Catalina-Island.pdf), accessed on May 6, 2024.
- Byrd, Brian F. and L. Mark Raab. 2007. Prehistory of the Southern Bight: Models for a New Millennium. In *California Prehistory: Colonization, Culture, and Complexity*, edited by Terry L. Jones and Kathryn A. Klar, pp. 215-227. AltaMira Press, Lanham, Maryland.
- California Dept. of Parks and Recreation. N.d. The Digital Atlas of California Native Americans (Digital Atlas). Electronic resource, <https://nahc.ca.gov/cp/>. Accessed May 6, 2024.
- The History of Catalina Island Exhibit. N. d. The Catalina Museum for Art and History. Avalon, California. Visited May 10, 2024.
- Chartkoff, Joseph L. and Kerry Kona Chartkoff. 1984. *The Archaeology of California*. Stanford University Press, Stanford, California.
- Couch, Jeffrey S., Joanne S. Couch, and Nancy Anastasia Wiley. 2009. Saved by the Well: The Keystone Cache at CA-ORA-83, the Cogged Stone Site. *Proceedings of the Society for California Archaeology* 21:147-156.
- Dillon, Brian D. 2002. California Paleo-Indians: Lack of Evidence, or Evidence of a Lack? In *Essays in California Archaeology: A Memorial to Franklin Fenenga*, edited by W. J. Wallace and F. A. Riddell,

- pp. 110–128. Contributions of the University of California Archaeological Research Facility, No. 60, Berkeley.
- Dixon, Keith A. 1968. Cogged Stones and Other Ceremonial Cache Artifacts in Stratigraphic Context at ORA-58, a Site in the Lower Santa Ana River Drainage, Orange County. *Pacific Coast Archaeological Society Quarterly* 4(3):57-68.
- Dixon, Keith A. 1975. New Evidence for the Most Important Archaeological Discovery in Long Beach: the Cogged Stones and Discs of Rancho Los Cerritos. *Los Fierros* 12(2):20–31.
- Dumke, Glenn S. 1970 [1944]. *The Boom of the Eighties in Southern California*. Fifth printing, 1970. Huntington Library Publications, San Marino, California.
- Eberhart, Hal. 1961. The Cogged Stones of Southern California. *American Antiquity* 26(3):361-370.
- Engelhardt, Zephyrin, O.F.M. 1927a. *San Fernando Rey, the Mission of the Valley*. Franciscan Herald Press, Chicago.
- Engelhardt, Zephyrin, O.F.M. 1927b. *San Gabriel Mission and the Beginning of Los Angeles*. Mission San Gabriel, San Gabriel, California.
- Erlandson, Jon M., Theodore Cooley, and Richard Carrico. 1987. A Fluted Projectile Point Fragment from the Southern California Coast: Chronology and Context at CA-SBA-1951. *Journal of California and Great Basin Anthropology* 9:120–128.
- Erlandson, Jon M. 1991. Early Maritime Adaptations on the Northern Channel Islands. In *Hunter-Gatherers of Early Holocene Coastal California*, edited by Jon M. Erlandson and Roger H. Colten, pp. 101-113. Perspectives in Archaeology, Vol. 1, Jeanne E. Arnold, Senior Series Editor. Institute of Archaeology, University of California, Los Angeles.
- Federal Writers' Project. 1954. *California a Guide to the Golden State*. American Guide Series. Hastings House Publishers, New York.
- Glassow, Michael A., L. Wilcoxon, and J. M. Erlandson. 1988. Cultural and Environmental Change during the Early Period of Santa Barbara Channel Prehistory. In *The Archaeology of Prehistoric Coastlines*, edited by G. Bailey and J. Parkington pp. 64–77. Cambridge University Press, Cambridge, England.
- Golla, Victor. 2011. *California Indian Languages*. University of California Press: Los Angeles.
- Guhan, Carol. 2007. "History of Santa Catalina Island". Accessed online June 2024 via [https://web.archive.org/web/20080107012700/http://www.ecatalina.com/article\\_history.cfm](https://web.archive.org/web/20080107012700/http://www.ecatalina.com/article_history.cfm)
- Guinn, J. M. 1977. A History of California and an Extended History of Los Angeles and Environs, Vol.1. Historic Record Company, Los Angeles.

- Heizer, Robert F. 1978. Introduction. In *California*, edited by R. F. Heizer, pp. 1–6. Handbook of North American Indians, Vol. 8, W.C. Sturtevant, general editor, Smithsonian Institution, Washington D.C.
- Holder, Charles Frederick. 1895. *Santa Catalina: An Isle of Summer*. C.A. Murdock and Company. San Francisco, 1895.
- Johnson, John. R., Thomas W. Stafford, Jr., Henry O. Ajie, and Don P. Morris. 2002. "Arlington Springs Revisited." In *Proceedings of the California Islands Symposium*. 2 vols. Edited by David R. Browne, Kathryn L. Mitchell, and Henry W. Chaney, pp. 541-545. Santa Barbara Museum of Natural History, Santa Barbara, California.
- Jones, Terry L., Richard T. Fitzgerald, Douglas J. Kennett, Charles Miksicek, John L. Fagan, John Sharp, and Jon M. Erlandson. 2002. The Cross Creek Site and Its Implications for New World Colonization. *American Antiquity* 67:213–230.
- Jones, Terry L., and Kathryn A. Klar. 2007. *California Prehistory: Colonization, Culture, and Complexity*. AltaMira Press, New York.
- Kauffman, Eric. 2021. Climate and Topography. In *Atlas of the Biodiversity of California*, California Department of Fish and Wildlife. pp. 12-15. United States of America.
- King, Chester D. 1994. Native American Placenames in the Santa Monica Mountains National Recreational Area, Agoura Hills. Topanga Anthropological Consultants, California.
- Koerper, Henry C., and Christopher E. Drover. 1983. Chronology Building for Coastal Orange County: The Case from CA-ORA-119-A. *Pacific Coast Archaeological Society Quarterly* 19(2):1–34.
- Koerper, Henry C., Roger D. Mason, and Mark L. Peterson. 2002. Complexity, Demography, and Change in Late Holocene Orange County. In *Catalysts to Complexity: Late Holocene Societies of the California Coast*, edited by Jon M. Erlandson and Terry L. Jones, pp. 63–81. Perspectives in California Archaeology, Vol. 6, Costen Institute of Archaeology, University of California, Los Angeles.
- Kowta, Makoto. 1969. The Sayles Complex, A Late Milling Stone Assemblage from the Cajon Pass and the Ecological Implications of its Scraper Planes. *University of California Publications in Anthropology* 6:35–69. Berkeley, California.
- Kroeber, Alfred J. 1925. *Handbook of the Indians of California*. Bureau of American Ethnology Bulletin 78. Dover Publications, Inc., New York.
- Mallan, Chicki. 1984. *Guide to Catalina Island*. Moon Publications, 1984.

- Marks, Ben. 2014. Double the Fun: The Husband-Wife Team Who Made Everyone Want to Chew Gum. Online resource, <https://www.collectorsweekly.com/articles/the-husband-wife-team-who-made-everyone-want-to-chew-gum/>, accessed May 17, 2024.
- Mason, Roger D., and Mark L. Peterson. 1994. *Newport Coast Archaeological Project: Newport Coast Settlement Systems—Analysis and Discussion*, Volume 1, part 1 of 2. Prepared by The Keith Companies. On file, South Central Coastal Information Center, California State University, Fullerton.
- McCawley, William. 1996. *The First Angelinos: The Gabrielino Indians of Los Angeles*. Malki Museum/Ballena Press Cooperative Publication, Banning or Novato, California.
- Mithun, Marianne. 2004 [1999]. *The Languages of Native North America*. Reprinted 2004. Cambridge University Press, Cambridge, Massachusetts.
- Moratto, Michael J. 1984. *California Archaeology*. Academic Press, Orlando, Florida.
- National Oceanic and Atmospheric Administration (NOAA). 2023. U.S. Climate Normals Quick Access. Electronic resource, <https://www.nci.noaa.gov/access/us-climate-normals/>, accessed May 6, 2024.
- Nationwide Environmental Title Research LLC (NETR). 2023. Historic Aerial Photographs of Avalon and surrounding. Electronic resources, <https://www.historicaerials.com/viewer>, accessed May 6, 2024.
- Otte, Stacey and Jeannine Pedersen. 2007. "Catalina Island History". Catalina Island Museum. Accessed online June 2024 via <https://web.archive.org/web/20080224055443/http://www.catalinamuseum.org/history.html>
- Pedersen, Jeannie L. and the Catalina Island Museum. *Images of America: Catalina by Sea: A Transportation History*. Arcadia. Charleston, South Carolina, 2006.
- Press-Telegram. 1969. "Catalina Pier Criticized". Press-Telegram. June 21, 1969. Accessed online June 2024 via [newspapers.com](http://newspapers.com)
- Public Broadcasting Station (PBS). 2018. Designers Dorothy and Otis. Publish Broadcasting Station. Online resource, <https://www.pbs.org/video/designers-dorothy-otis-shepard-2nbkxi/>, accessed May 17, 2024.
- Rick, Torben C., Jon M. Erlandson, and René Vellanoweth. 2001. Paleocoastal Marine Fishing on the Pacific Coast of the Americas: Perspectives from Daisy Cave, California. *American Antiquity* 66:595–613.

- Rick, Torben C., Jon M. Erlandson, and René Vellanoweth. 2005. "From Pleistocene Mariners to Complex Hunter-Gatherers: The Archaeology of the California Channel Islands." *Journal of World Prehistory* Vol. 19. No. 3 pp. 169-228.
- Rolle, Andrew. 2003. *California: A History*. Revised and expanded sixth edition. Harlan Davidson, Inc., Wheeling, Illinois.
- Shibley, William F. 1978. Native Languages of California. In *California*, edited by R. F. Heizer, pp. 80–90. Handbook of North American Indians, Vol. 8, W. C. Sturtevant, general editor, Smithsonian Institution, Washington D.C.
- True, Delbert L. 1993. Bedrock Milling Elements as Indicators of Subsistence and Settlement Patterns in Northern San Diego County, California. *Pacific Coast Archaeological Society Quarterly* 29(2):1–26.
- University of California, Davis and Natural Resources Conservation Service (NRCS). 2024. SoilWeb. Electronic resource, <https://casoilresource.lawr.ucdavis.edu/gmap/>, accessed May 6, 2024.
- University of California, Santa Barbara (UCSB). 2024. Historic Aerial Photographs of Avalon and surrounding. Map & Imagery Laboratory (MIL) UCSB Library. Electronic Resource, [http://mil.library.ucsb.edu/ap\\_indexes/FrameFinder](http://mil.library.ucsb.edu/ap_indexes/FrameFinder), accessed May 6, 2024.
- Van Bueren, Thad M., Susan K. Goldberg, Michael J. Moratto, Portia Lee, and Jerrel H. Sorrenson. 1989. *Inventory and Evaluation of Cultural Resources: Bolsa Chica Mesa and Huntington Beach Mesa, Orange County, California*. Prepared by Infotech Research, Inc. Report on file at the South Central Coastal Information Center, California State University, Fullerton.
- Wallace, William J. 1955. A Suggested Chronology for Southern California Coastal Archaeology. *Southwestern Journal of Anthropology* 11(3):214-230.
- Wallace, William J. 1978. Post-Pleistocene Archaeology, 9000 to 2000 B.C. In *California*, edited by R. F. Heizer, pp. 25–36. Handbook of North American Indians, Vol. 8, W. C. Sturtevant, general editor, Smithsonian Institution, Washington D.C.
- Warren, Claude N. 1968. Cultural Tradition and Ecological Adaptation on the Southern California Coast. In *Archaic Prehistory in the Western United States*, edited by C. Irwin-Williams, pp. 1-14. Eastern New Mexico University Contributions to Anthropology 1 (3):1-14. Portales.
- Weigand, Peter W. and Karen L. Savage. 2002. Summary of the Miocene Igneous Rocks of the Channel Islands, Southern California. Santa Barbara Botanic Gardens. Online resource, <https://sbbotanicgarden.org/wp-content/uploads/2022/08/Weigand-Savage-2002-Miocene-igneus-rocks-CHIS.pdf>, accessed May 6, 2024.
- Wlodarski, Robert J. 2010. A Preliminary Cultural Resource Management Plan for the City of Avalon General Plan Update and EIR, City of Avalon, Santa Catalina Island, Los Angeles County,

California. Electronic document, <https://dokumen.tips/documents/preliminary-cultural-resource-management-planpdf.html?page=1>, accessed May 6, 2024.

## Appendix A: Records Search Summary

---

# Report List

Report No. Other IDs	Author(s)	Year	Title	Affiliation	Resources
LA-00070	Leonard, Nelson N. III	1974	Archaeological Reconnaissance of the Proposed Bahia Vista Development, Avalon, Calif.		
LA-02373	Wlodarski, Robert J.	1991	A Phase 1 Archaeological and Architectural-historical Study For the Bird Park and Descanso Beach Sites, Santa Catalina Island, Los Angeles County, California	Historical, Environmental, Archaeological, Research, Team	
LA-02457	Douglas, Ronald D.	1980	Archaeological Resource Assessment Las Casitas Hotel Expansion Site, Avalon, Santa Catalina Island, California	LSA Associates, Inc.	
LA-02504	Wlodarski, Robert J.	1991	An Addendum Phase 1 Archaeological Study for a Pedestrian Walkway and Restaurant, Santa Catalina Island, Los Angeles County, California	Historical, Environmental, Archaeological, Research, Team	
LA-02666	Wlodarski, Robert J.	1979	Ralph Glidden's Catalina Investigations	Southwest Museum	
LA-02672	Wlodarski, Robert J.	1978	Ralph Gidden History Museum and Collection	Southwest Museum	
LA-02855	Schumacher, Paul	1963	Ancient Olla Manufactory on Santa Catalina Island, California - Reports of the University of California Archaeological Survey- no. 59,	University of California Archaeological Research Facility	
LA-04247	Maki, Mary K.	1998	Phase I Archaeological Reconnaissance of Approximately 115 Acres for the Avalon Golf Course Expansion Project, Santa Catalina Island, Los Angeles County, California	Conejo Archaeological Consultants	19-002678
LA-08463	Strudwick, Ivan H., Roderic McLean, Jay Michalsky, Brooks Mith, and Joseph Baumann	2007	A Glimpse of the Past on Pimu, Cultural Resource Survey of Selected Areas on Santa Catalina Island, Los Angeles County, California	LSA Associates, Inc.	19-003516, 19-003517, 19-003518, 19-003519, 19-003520, 19-003521, 19-003522, 19-003523, 19-003524, 19-003525, 19-003526, 19-003527, 19-003528, 19-003529, 19-003530, 19-003531, 19-003532, 19-003533, 19-100566, 19-100567, 19-100568, 19-100569, 19-100570, 19-100571
LA-09886	Ivan H. Strudwick, Joseph E. Baumann, and Daniel Ewers	2008	Santa Catalina Island: Lay of the Land	LSA Associates, Inc.	

# Report List

Report No. Other IDs	Author(s)	Year	Title	Affiliation	Resources
LA-09887	Ivan H. Strudwick	2008	Results of an Archaeological Survey of SCE Power Poles Across 51 Miles of Santa Catalina Island	LSA Associates, Inc	19-003516, 19-003517, 19-003518, 19-003519, 19-003520, 19-003521, 19-003522, 19-003523, 19-003524, 19-003525, 19-003526, 19-003527, 19-003528, 19-003529, 19-003530, 19-003531, 19-003532, 19-003533, 19-100565, 19-100566, 19-100567, 19-100568, 19-100569, 19-100570, 19-100571
LA-09888	Ivan H. Strudwick	2008	The Development of Southern California Edison on Santa Catalina Island	LSA Associates, Inc.	
LA-09889	Ivan H. Strudwick	2008	A Brief Prehistory and History of Santa Catalina island	LSA Associates, Inc.	
LA-10018	Shepard, Richard S.	2003	Cultural Resources Constraints Assessment: Approximately 300-acre "project Cat," City of Avalon, Los Angeles County, California.	BonTerra Consulting	19-002678
LA-11138	Pierson, Larry, Shiner, Gerald, and Slater, Richard	1987	California Outer Continental Shelf, Archaeological Resource Study: Morro Bay to Mexican Border, Final Report.	PS Associates	
LA-12252	Bonner, Wayne and Crawford, Kathleen	2013	Cultural Resources Records Search and Site Visit Results for AT&T Mobility, LLC Candidate LA0570 (Avalon) Chimes Tower Road, Avalon, Los Angeles County, California	EAS	19-003712, 19-180701
LA-12732	Bonner, Wayne	2013	Cultural Resources Records Search and Site Visit Results for AT&T Mobility, LLC Candidate LA0570® (Chimes Tower Rd/Avalon) St Catherine's Road, Avalon, Los Angeles County, California, CASPR No 3551455024	EAS	19-003712
LA-12765	Harper, Caprice	2014	Historic Resources Evaluation Report of the Beacon Street Shower Building Prepared for the Vons #3280 Project Area, City of Avalon, Los Angeles County, California	Pacific West Archaeology	19-190939
LA-13223	Corbett, Ray and Richard Guttenberg	2016	CULTURAL RESOURCES MONITORING REPORT FOR THE 217 METROPOLE AVE. (CATALINA ISLAND MUSEUM) SEWER LINE PROJECT CITY OF AVALON, SANTA CATALINA ISLAND	John Minch and Associates, Inc.	
LA-13240	Newcomb, Alyssa, Sara Dietler, William Kendig, and John Dietler	2017	Archaeological Monitoring and Data Recovery for Southern California Edison's Catalina Gas Line Emergency Project on Crescent Avenue City of Avalon, Los Angeles County, Santa Catalina Island, California	SWCA Environmental Consultants	19-003712

# Report List

<b>Report No. Other IDs</b>	<b>Author(s)</b>	<b>Year</b>	<b>Title</b>	<b>Affiliation</b>	<b>Resources</b>
LA-13457	Dietler, John and Sara Dietler	2017	Before Avalon, The Southern California Edison Catalina Metropole Vault Replacement Project, Avalon, Santa Catalina Island, California	Cogstone Resource Management, Inc. / SWCA Environmental Consultants	19-003712

# Resource List

Primary No.	Trinomial	Other IDs	Type	Age	Attribute Codes	Recorded By	Reports
P-19-002678	CA-LAN-002678H	Resource Name - Avalon Golf Course Stone Retaining Walls; Other - CAC-1H	Structure, Site	Historic	AH11	1998 (Mary Maki, Larry Carbone, Conejo Archaeological Consultants)	LA-04247, LA-10018
P-19-003531	CA-LAN-003531H	Resource Name - Santa Catalina Island, Group B, Site 8; Other - SCE330-B-S-8	Site	Historic	AH02; AH07; AH11	2005 (Ivan Strudwick, Joe Baumann, Brooks Smith, LSA Associates, Inc)	LA-08463, LA-09887
P-19-003712	CA-LAN-003712/H	Resource Name - CA-SCAI-29	Site	Prehistoric, Historic	AH04; AH16; AP02; AP15; AP16	2005 (Ivan Strudwick, Maria Aron, LSA Associates, Inc); 2016 (A. Newcomb, SWCA); 2016 (Alyssa Newcomb, SWCA); 2016 (Alyssa Newcomb, SWCA); 2017 (John Dietler, SWCA)	LA-12252, LA-12732, LA-13240, LA-13288, LA-13366, LA-13367, LA-13457
P-19-004747	CA-LAN-004747H	Resource Name - CWA1370-S-002H	Site	Historic	AH04	2016 (Omar Rice, SWCA)	
P-19-004748	CA-LAN-004748H	Resource Name - CWA1370-S-003H	Site	Historic	AH04	2016 (Omar Rice, SWCA)	
P-19-004895	CA-LAN-004895/H	Resource Name - Crescent St at Catalina Ave	Site	Prehistoric, Historic	AH04; AP15	2015 (Ray Corbett, JMA)	
P-19-178670		OHP Property Number - 029350; Resource Name - William Wrigley Jr Summer Cottage; Other - Mt Ada	Building, Other	Historic	HP15	1984 (R. Hatheway & R. Starzak, Roger Hatheway & Associates)	
P-19-178671		OHP Property Number - 029351; Resource Name - Peter Gano House; Other - Holly Hill House	Building	Historic	HP02	1983 (P.A. Moore, Catalina Island Museum Society)	
P-19-180701		OHP Property Number - 073048; Resource Name - Tuna Club of Avalon; CHL - CHL 997	Building	Historic	HP13	1990 (C. Davis & A. Herbold, Tuna Club of Avalon)	LA-12252
P-19-190939		Resource Name - Beacon Street Shower Building; Other - Santa Catalina Island Company Island Plaza Storage Bldg; Other - Island Villas Shower Bldg; Other - Island Villas Barracks Shower Bldg	Building, Element of district	Historic	HP04	2014 (K. Harper and B. Glenn, Pacific West Archaeology, Inc)	LA-12765, LA-12930

## Appendix B: Native American Coordination

---

# Sacred Lands File & Native American Contacts List Request

## Native American Heritage Commission

1550 Harbor Blvd, Suite 100

West Sacramento, CA 95691

916-373-3710

916-373-5471 – Fax

[nahc@nahc.ca.gov](mailto:nahc@nahc.ca.gov)

*Information Below is Required for a Sacred Lands File Search*

**Date of Request:** 05/03/2024

**Project:** Club Dock Replacement Project

**County:** Los Angeles

**USGS Quadrangle Name:** Santa Catalina East, CA

**Township:** 09 S      **Range:** 14 W      **Section(s):** 27

**Company/Firm/Agency:** South Environmental

**Street Address:** 2061 N Los Robles Avenue, Ste. 205

**City:** Pasadena

**Zip:** 91104

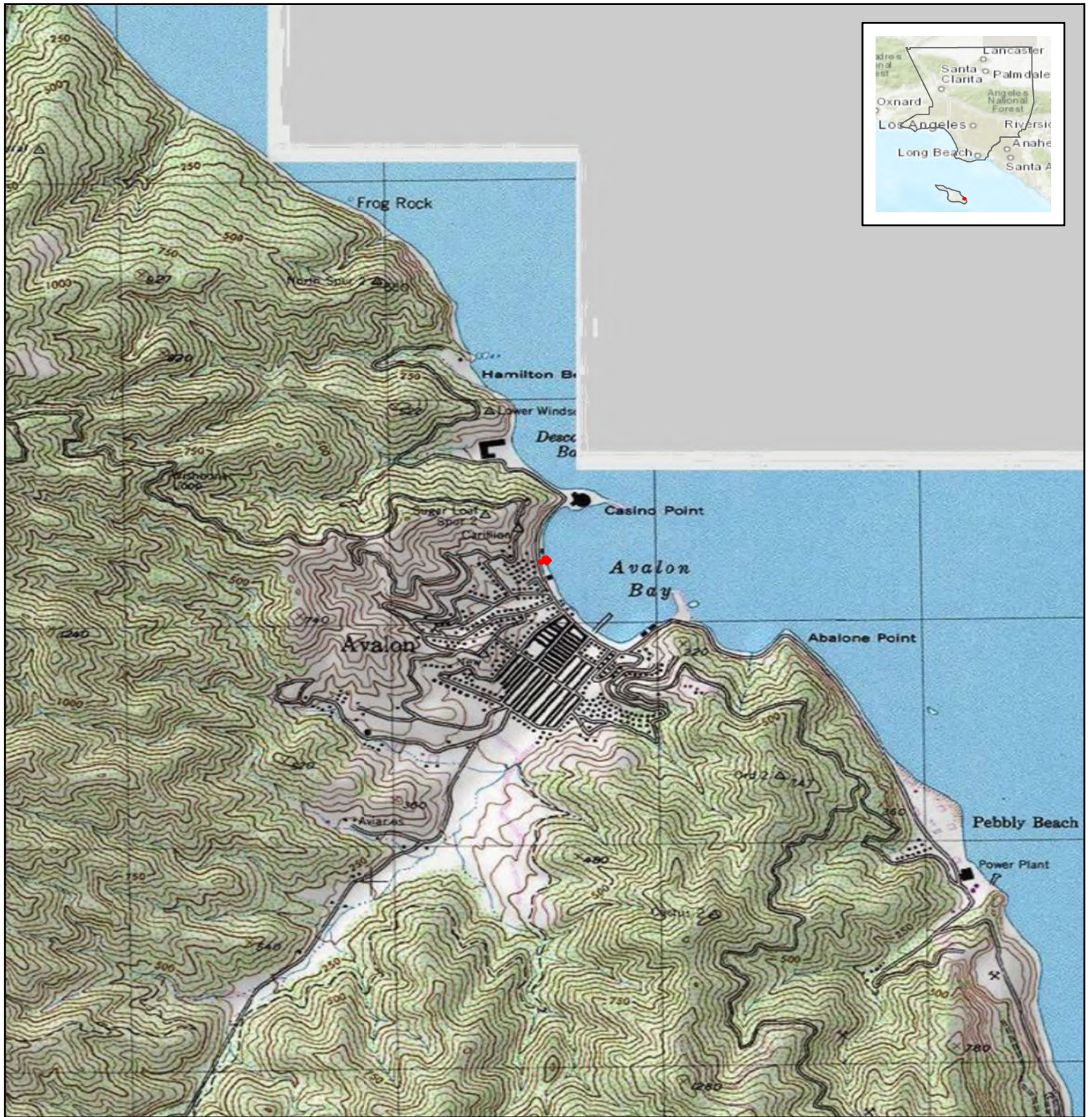
**Phone:** (818) 458-1162

**Fax:** n/a

**Email:** khunt@southenvironmental.com

### Project Description:

The project proposes to replace the existing club dock with an 80-foot-long gangway, the maximum length as required by the Americans with Disabilities Act (ADA). The connection at the sidewalk will be a simple hinge. The H-frame would be pile driven (or otherwise, it's close to the shore) and include a hoist which would allow City staff to raise the gangway and pin it in place above a heavy swell when required. The work will all be within disturbed areas both upland and underwater replacing deteriorated infrastructure.



Source: ESRI USA Topo Maps and World Topo Map 2024

Club Dock Replacement Project

# Figure 1. Project Location Map

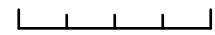
Project Site

Project Location is within Avalon, California, in Los Angeles County on the USGS Santa Catalina East 7.5-minute quadrangle map in Section 27 of Township 09 South and Range 14 West

Center Coordinate (Decimal Degrees):  
 Latitude: 33.3463862N Longitude: -118.3270814W



0 1,000 2,000 Feet



Scale: 1:24,000



## NATIVE AMERICAN HERITAGE COMMISSION

May 29, 2024

Kevin Hunt  
South Environmental

Via Email to: [khunt@southenvironmental.com](mailto:khunt@southenvironmental.com)

### Re: Club Dock Replacement Project, Los Angeles County

To Whom It May Concern:

A record search of the Native American Heritage Commission (NAHC) Sacred Lands File (SLF) was completed for the information you have submitted for the above referenced project. The results were positive. Please contact the tribes on the attached list for more information. Other sources of cultural resources should also be contacted for information regarding known and recorded sites.

Attached is a list of Native American tribes who may also have knowledge of cultural resources in the project area. This list should provide a starting place in locating areas of potential adverse impact within the proposed project area. I suggest you contact all of those indicated; if they cannot supply information, they might recommend others with specific knowledge. By contacting all those listed, your organization will be better able to respond to claims of failure to consult with the appropriate tribe. If a response has not been received within two weeks of notification, the Commission requests that you follow-up with a telephone call or email to ensure that the project information has been received.

If you receive notification of change of addresses and phone numbers from tribes, please notify me. With your assistance, we can assure that our lists contain current information.

If you have any questions or need additional information, please contact me at my email address: [Andrew.Green@nahc.ca.gov](mailto:Andrew.Green@nahc.ca.gov).

Sincerely,



Andrew Green  
Cultural Resources Analyst

Attachment



CHAIRPERSON  
**Reginald Pagaling**  
Chumash

VICE-CHAIRPERSON  
**Buffy McQuillen**  
Yokayo Pomo, Yuki,  
Nomlaki

SECRETARY  
**Sara Dutschke**  
Miwok

PARLIAMENTARIAN  
**Wayne Nelson**  
Luiseño

COMMISSIONER  
**Isaac Bojorquez**  
Ohlone-Costanoan

COMMISSIONER  
**Stanley Rodriguez**  
Kumeyaay

COMMISSIONER  
**Laurena Bolden**  
Serrano

COMMISSIONER  
**Reid Milanovich**  
Cahuilla

COMMISSIONER  
**Bennae Calac**  
Pauma-Yuima Band of  
Luiseño Indians

EXECUTIVE SECRETARY  
**Raymond C.  
Hitchcock**  
Miwok, Nisenan

**NAHC HEADQUARTERS**  
1550 Harbor Boulevard  
Suite 100  
West Sacramento,  
California 95691  
(916) 373-3710  
[nahc@nahc.ca.gov](mailto:nahc@nahc.ca.gov)

**Native American Heritage Commission  
Native American Contact List  
Los Angeles County  
5/29/2024**

Tribe Name	Fed (F) Non-Fed (N)	Contact Person	Contact Address	Phone #	Fax #	Email Address	Cultural Affiliation	Counties	Last Updated
Gabrieleno Band of Mission Indians - Kizh Nation	N	Christina Swindall Martinez, Secretary	P.O. Box 393 Covina, CA, 91723	(844) 390-0787		admin@gabrielenoindians.org	Gabrieleno	Los Angeles, Orange, Riverside, San Bernardino, Santa Barbara, Ventura	8/18/2023
Gabrieleno Band of Mission Indians - Kizh Nation	N	Andrew Salas, Chairperson	P.O. Box 393 Covina, CA, 91723	(844) 390-0787		admin@gabrielenoindians.org	Gabrieleno	Los Angeles, Orange, Riverside, San Bernardino, Santa Barbara, Ventura	8/18/2023
Gabrieleno/Tongva San Gabriel Band of Mission Indians	N	Anthony Morales, Chairperson	P.O. Box 693 San Gabriel, CA, 91778	(626) 483-3564	(626) 286-1262	GTTribalcouncil@aol.com	Gabrieleno	Los Angeles, Orange, Riverside, San Bernardino, Santa Barbara, Ventura	12/4/2023
Gabrielino Tongva Indians of California Tribal Council	N	Christina Conley, Cultural Resource Administrator	P.O. Box 941078 Simi Valley, CA, 93094	(626) 407-8761		christina.marsden@alumni.usc.edu	Gabrielino	Los Angeles, Orange, Riverside, San Bernardino, Santa Barbara, Ventura	3/16/2023
Gabrielino Tongva Indians of California Tribal Council	N	Robert Dorame, Chairperson	P.O. Box 490 Bellflower, CA, 90707	(562) 761-6417	(562) 761-6417	gtongva@gmail.com	Gabrielino	Los Angeles, Orange, Riverside, San Bernardino, Santa Barbara, Ventura	3/16/2023
Gabrielino/Tongva Nation	N	Sandonne Goad, Chairperson	106 1/2 Judge John Aiso St., #231 Los Angeles, CA, 90012	(951) 807-0479		sgoad@gabrielino-tongva.com	Gabrielino	Los Angeles, Orange, Riverside, San Bernardino, Santa Barbara, Ventura	3/28/2023
Gabrielino-Tongva Tribe	N	Charles Alvarez, Chairperson	23454 Vanowen Street West Hills, CA, 91307	(310) 403-6048		Chavez1956metro@gmail.com	Gabrielino	Los Angeles, Orange, Riverside, San Bernardino, Santa Barbara, Ventura	5/30/2023
Gabrielino-Tongva Tribe	N	Sam Dunlap, Cultural Resource Director	P.O. Box 3919 Seal Beach, CA, 90740	(909) 262-9351		tongvatcr@gmail.com	Gabrielino	Los Angeles, Orange, Riverside, San Bernardino, Santa Barbara, Ventura	5/30/2023
Juaneno Band of Mission Indians Acjachemen Nation 84A	N	Heidi Lucero, Chairperson, THPO	31411-A La Matanza Street San Juan Capistrano, CA, 92675	(562) 879-2884		jbman.chairwoman@gmail.com	Juaneno	Los Angeles, Orange, Riverside, San Bernardino, San Diego	3/28/2023
Pechanga Band of Indians	F	Steve Bodmer, General Counsel for Pechanga Band of Indians	P.O. Box 1477 Temecula, CA, 92593	(951) 770-6171	(951) 695-1778	sbodmer@pechanga-nsn.gov	Luiseno	Los Angeles, Orange, Riverside, San Bernardino, San Diego, Santa Barbara, Ventura	8/2/2023
Pechanga Band of Indians	F	Tuba Ebru Ozdil, Pechanga Cultural Analyst	P.O. Box 2183 Temecula, CA, 92593	(951) 770-6313	(951) 695-1778	eozdil@pechanga-nsn.gov	Luiseno	Los Angeles, Orange, Riverside, San Bernardino, San Diego, Santa Barbara, Ventura	8/2/2023
Rincon Band of Luiseno Indians	F	Joseph Linton, Tribal Council/Culture Committee Member	One Government Center Lane Valley Center, CA, 92082	(760) 803-3548		jlinton@rincon-nsn.gov	Luiseno	Los Angeles, Orange, Riverside, San Bernardino, San Diego, Santa Barbara, Ventura	5/31/2023
Rincon Band of Luiseno Indians	F	Laurie Gonzalez, Tribal Council/Culture Committee Member	One Government Center Lane Valley Center, CA, 92082	(760) 484-4835		lgonzalez@rincon-nsn.gov	Luiseno	Los Angeles, Orange, Riverside, San Bernardino, San Diego, Santa Barbara, Ventura	5/31/2023
Rincon Band of Luiseno Indians	F	Denise Turner Walsh, Attorney General	One Government Center Lane Valley Center, CA, 92082	(760) 689-5727		dwalsh@rincon-nsn.gov	Luiseno	Los Angeles, Orange, Riverside, San Bernardino, San Diego, Santa Barbara, Ventura	7/7/2023
Rincon Band of Luiseno Indians	F	Cheryl Madrigal, Cultural Resources Manager/Tribal Historic Preservation Officer	One Government Center Lane Valley Center, CA, 92082	(760) 648-3000		cmadrigal@rincon-nsn.gov	Luiseno	Los Angeles, Orange, Riverside, San Bernardino, San Diego, Santa Barbara, Ventura	5/31/2023
Santa Ynez Band of Chumash Indians	F	Wendy Teeter, Cultural Resources Archaeologist	100 Via Juana Road Santa Ynez, CA, 93460	(805) 325-8630		wteeter@chumash.gov	Chumash	Kern, Los Angeles, San Luis Obispo, Santa Barbara, Ventura	7/6/2023
Santa Ynez Band of Chumash Indians	F	Crystal Mendoza, Elders' Council Administrative Assistant	100 Via Juana Road Santa Ynez, CA, 93460	(805) 325-5537		cmendoza@chumash.gov	Chumash	Kern, Los Angeles, San Luis Obispo, Santa Barbara, Ventura	2/27/2024
Santa Ynez Band of Chumash Indians	F	Sam Cohen, Government & Legal Affairs Director	100 Via Juana Road Santa Ynez, CA, 93460			scohen@chumash.gov	Chumash	Kern, Los Angeles, San Luis Obispo, Santa Barbara, Ventura	7/6/2023
Santa Ynez Band of Chumash Indians	F	Nakia Zavalla, Tribal Historic Preservation Officer	100 Via Juana Road Santa Ynez, CA, 93460			nzavalla@chumash.gov	Chumash	Kern, Los Angeles, San Luis Obispo, Santa Barbara, Ventura	7/6/2023

This list is current only as of the date of this document. Distribution of this list does not relieve any person of statutory responsibility as defined in Section 7050.5 of the Health and Safety Code, Section 5097.94 of the Public Resource Section 5097.98 of the Public Resources Code.

This list is only applicable for contacting local Native Americans with regard to cultural resources assessment for the proposed Club Dock Replacement Project, Los Angeles County.

Record: PROJ-2024-002743  
Report Type: List of Tribes  
Counties: Los Angeles  
NAHC Group: All

May 3, 2024

Gabrielino-Tongva Tribe  
Charles Alvarez, Tribal Chairman  
23454 Vanowen Street  
West Hills, CA 91307  
[calvarez1@gabrielinotribe.org](mailto:calvarez1@gabrielinotribe.org)

**RE: Club Dock Replacement Project, City of Avalon, Santa Catalina Island, Los Angeles County, California**

Dear Chairman Alvarez:

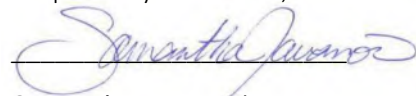
South Environmental was retained to conduct a cultural resources inventory for the proposed Club Dock Replacement Project (proposed project). The project site occupies an approximately 0.25-acre area located at the shoreline near St. Catherine Way in the City of Avalon on Santa Catalina Island, Los Angeles County, California. The project site is located on the United States Geological Survey (USGS) Santa Catalina East 7.5-minute Quadrangle Map in Section 27 of Township 09 and Range 14 (see enclosed Figure 1). The project proposes to replace the existing club dock with an 80-foot-long gangway, the maximum length as required by the Americans with Disabilities Act (ADA). The connection at the sidewalk will be a simple hinge. The H-frame would be pile driven (or otherwise, it's close to the shore) and include a hoist which would allow City staff to raise the gangway and pin it in place above a heavy swell when required. The work will all be within disturbed areas both upland and underwater replacing deteriorated infrastructure.

As part of the process of identifying potential cultural resources, South Environmental contacted the Native American Heritage Commission (NAHC) and requested a Sacred Lands File search on May 3, 2024. The NAHC has not yet responded; however, we anticipate they will recommend we contact you to seek comment.

If you have any knowledge of cultural resources that may exist within or near the project site, please contact me at [sjovanovic@southenvironmental.com](mailto:sjovanovic@southenvironmental.com) or 562-900-8816, or via U.S. mail at the address above.

Please note that the request herein is for informational purposes only and does not constitute Assembly Bill 52 notification or initiation of consultation.

Respectfully submitted,



Samantha Jovanovic  
Archaeologist

Attachment: Figure 1. Project Location Map



May 3, 2024

Gabrielino Tongva Indians of California Tribal Council  
Robert Dorame, Chairperson  
P.O. Box 490  
Bellflower, CA 90707  
[gtongva@gmail.com](mailto:gtongva@gmail.com)

**RE: Club Dock Replacement Project, City of Avalon, Santa Catalina Island, Los Angeles County, California**

Dear Chairperson Dorame:

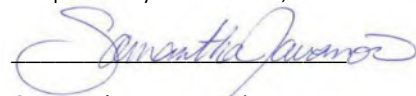
South Environmental was retained to conduct a cultural resources inventory for the proposed Club Dock Replacement Project (proposed project). The project site occupies an approximately 0.25-acre area located at the shoreline near St. Catherine Way in the City of Avalon on Santa Catalina Island, Los Angeles County, California. The project site is located on the United States Geological Survey (USGS) Santa Catalina East 7.5-minute Quadrangle Map in Section 27 of Township 09 and Range 14 (see enclosed Figure 1). The project proposes to replace the existing club dock with an 80-foot-long gangway, the maximum length as required by the Americans with Disabilities Act (ADA). The connection at the sidewalk will be a simple hinge. The H-frame would be pile driven (or otherwise, it's close to the shore) and include a hoist which would allow City staff to raise the gangway and pin it in place above a heavy swell when required. The work will all be within disturbed areas both upland and underwater replacing deteriorated infrastructure.

As part of the process of identifying potential cultural resources, South Environmental contacted the Native American Heritage Commission (NAHC) and requested a Sacred Lands File search on May 3, 2024. The NAHC has not yet responded; however, we anticipate they will recommend we contact you to seek comment.

If you have any knowledge of cultural resources that may exist within or near the project site, please contact me at [sjovanovic@southenvironmental.com](mailto:sjovanovic@southenvironmental.com) or 562-900-8816, or via U.S. mail at the address above.

Please note that the request herein is for informational purposes only and does not constitute Assembly Bill 52 notification or initiation of consultation.

Respectfully submitted,



Samantha Jovanovic  
Archaeologist

Attachment: Figure 1. Project Location Map



May 3, 2024

Gabrielino/Tongva Nation  
Sandonne Goad, Chairperson  
106 1/2 Judge John Aiso St. #231  
Los Angeles, CA 90012  
[sgoad@gabrielino-tongva.com](mailto:sgoad@gabrielino-tongva.com)

**RE: Club Dock Replacement Project, City of Avalon, Santa Catalina Island, Los Angeles County, California**

Dear Chairperson Goad:

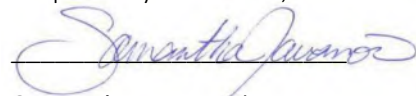
South Environmental was retained to conduct a cultural resources inventory for the proposed Club Dock Replacement Project (proposed project). The project site occupies an approximately 0.25-acre area located at the shoreline near St. Catherine Way in the City of Avalon on Santa Catalina Island, Los Angeles County, California. The project site is located on the United States Geological Survey (USGS) Santa Catalina East 7.5-minute Quadrangle Map in Section 27 of Township 09 and Range 14 (see enclosed Figure 1). The project proposes to replace the existing club dock with an 80-foot-long gangway, the maximum length as required by the Americans with Disabilities Act (ADA). The connection at the sidewalk will be a simple hinge. The H-frame would be pile driven (or otherwise, it's close to the shore) and include a hoist which would allow City staff to raise the gangway and pin it in place above a heavy swell when required. The work will all be within disturbed areas both upland and underwater replacing deteriorated infrastructure.

As part of the process of identifying potential cultural resources, South Environmental contacted the Native American Heritage Commission (NAHC) and requested a Sacred Lands File search on May 3, 2024. The NAHC has not yet responded; however, we anticipate they will recommend we contact you to seek comment.

If you have any knowledge of cultural resources that may exist within or near the project site, please contact me at [sjovanovic@southenvironmental.com](mailto:sjovanovic@southenvironmental.com) or 562-900-8816, or via U.S. mail at the address above.

Please note that the request herein is for informational purposes only and does not constitute Assembly Bill 52 notification or initiation of consultation.

Respectfully submitted,



Samantha Jovanovic  
Archaeologist

Attachment: Figure 1. Project Location Map



May 3, 2024

Rincon Band of Luiseño Indians  
Cheryl Madrigal, Tribal Historic Preservation Officer  
One Government Center Lane  
Valley Center, CA 92082  
[crd@rincon-nsn.gov](mailto:crd@rincon-nsn.gov)

**RE: Club Dock Replacement Project, City of Avalon, Santa Catalina Island, Los Angeles County, California**

Dear THPO Madrigal:

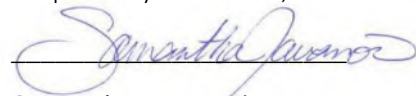
South Environmental was retained to conduct a cultural resources inventory for the proposed Club Dock Replacement Project (proposed project). The project site occupies an approximately 0.25-acre area located at the shoreline near St. Catherine Way in the City of Avalon on Santa Catalina Island, Los Angeles County, California. The project site is located on the United States Geological Survey (USGS) Santa Catalina East 7.5-minute Quadrangle Map in Section 27 of Township 09 and Range 14 (see enclosed Figure 1). The project proposes to replace the existing club dock with an 80-foot-long gangway, the maximum length as required by the Americans with Disabilities Act (ADA). The connection at the sidewalk will be a simple hinge. The H-frame would be pile driven (or otherwise, it's close to the shore) and include a hoist which would allow City staff to raise the gangway and pin it in place above a heavy swell when required. The work will all be within disturbed areas both upland and underwater replacing deteriorated infrastructure.

As part of the process of identifying potential cultural resources, South Environmental contacted the Native American Heritage Commission (NAHC) and requested a Sacred Lands File search on May 3, 2024. The NAHC has not yet responded; however, we anticipate they will recommend we contact you to seek comment.

If you have any knowledge of cultural resources that may exist within or near the project site, please contact me at [sjovanovic@southenvironmental.com](mailto:sjovanovic@southenvironmental.com) or 562-900-8816, or via U.S. mail at the address above.

Please note that the request herein is for informational purposes only and does not constitute Assembly Bill 52 notification or initiation of consultation.

Respectfully submitted,



Samantha Jovanovic  
Archaeologist

Attachment: Figure 1. Project Location Map



May 3, 2024

Rincon Band of Luiseño Indians  
Bo Mazzetti, Chairperson  
One Government Center Lane  
Valley Center, CA 92082  
[bomazzetti@aol.com](mailto:bomazzetti@aol.com)

**RE: Club Dock Replacement Project, City of Avalon, Santa Catalina Island, Los Angeles County, California**

Dear Chairperson Mazzetti:

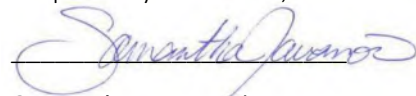
South Environmental was retained to conduct a cultural resources inventory for the proposed Club Dock Replacement Project (proposed project). The project site occupies an approximately 0.25-acre area located at the shoreline near St. Catherine Way in the City of Avalon on Santa Catalina Island, Los Angeles County, California. The project site is located on the United States Geological Survey (USGS) Santa Catalina East 7.5-minute Quadrangle Map in Section 27 of Township 09 and Range 14 (see enclosed Figure 1). The project proposes to replace the existing club dock with an 80-foot-long gangway, the maximum length as required by the Americans with Disabilities Act (ADA). The connection at the sidewalk will be a simple hinge. The H-frame would be pile driven (or otherwise, it's close to the shore) and include a hoist which would allow City staff to raise the gangway and pin it in place above a heavy swell when required. The work will all be within disturbed areas both upland and underwater replacing deteriorated infrastructure.

As part of the process of identifying potential cultural resources, South Environmental contacted the Native American Heritage Commission (NAHC) and requested a Sacred Lands File search on May 3, 2024. The NAHC has not yet responded; however, we anticipate they will recommend we contact you to seek comment.

If you have any knowledge of cultural resources that may exist within or near the project site, please contact me at [sjovanovic@southenvironmental.com](mailto:sjovanovic@southenvironmental.com) or 562-900-8816, or via U.S. mail at the address above.

Please note that the request herein is for informational purposes only and does not constitute Assembly Bill 52 notification or initiation of consultation.

Respectfully submitted,



Samantha Jovanovic  
Archaeologist

Attachment: Figure 1. Project Location Map



May 3, 2024

Pechanga Band of Luiseño Indians  
Mark Macarro, Chairperson  
P.O. Box 1477  
Temecula, CA 92593  
[epreston@pechanga-nsn.gov](mailto:epreston@pechanga-nsn.gov)

**RE: Club Dock Replacement Project, City of Avalon, Santa Catalina Island, Los Angeles County, California**

Dear Chairperson Macarro:

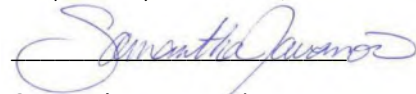
South Environmental was retained to conduct a cultural resources inventory for the proposed Club Dock Replacement Project (proposed project). The project site occupies an approximately 0.25-acre area located at the shoreline near St. Catherine Way in the City of Avalon on Santa Catalina Island, Los Angeles County, California. The project site is located on the United States Geological Survey (USGS) Santa Catalina East 7.5-minute Quadrangle Map in Section 27 of Township 09 and Range 14 (see enclosed Figure 1). The project proposes to replace the existing club dock with an 80-foot-long gangway, the maximum length as required by the Americans with Disabilities Act (ADA). The connection at the sidewalk will be a simple hinge. The H-frame would be pile driven (or otherwise, it's close to the shore) and include a hoist which would allow City staff to raise the gangway and pin it in place above a heavy swell when required. The work will all be within disturbed areas both upland and underwater replacing deteriorated infrastructure.

As part of the process of identifying potential cultural resources, South Environmental contacted the Native American Heritage Commission (NAHC) and requested a Sacred Lands File search on May 3, 2024. The NAHC has not yet responded; however, we anticipate they will recommend we contact you to seek comment.

If you have any knowledge of cultural resources that may exist within or near the project site, please contact me at [sjovanovic@southenvironmental.com](mailto:sjovanovic@southenvironmental.com) or 562-900-8816, or via U.S. mail at the address above.

Please note that the request herein is for informational purposes only and does not constitute Assembly Bill 52 notification or initiation of consultation.

Respectfully submitted,



Samantha Jovanovic  
Archaeologist

Attachment: Figure 1. Project Location Map



May 3, 2024

Gabrieleno/Tongva San Gabriel Band of Mission Indians  
Anthony Morales, Chairperson  
P.O. Box 693  
San Gabriel, CA 91778  
GTtribalcouncil@aol.com

**RE: Club Dock Replacement Project, City of Avalon, Santa Catalina Island, Los Angeles County, California**

Dear Chairperson Morales:

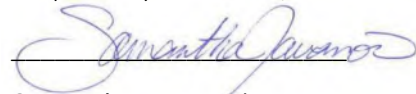
South Environmental was retained to conduct a cultural resources inventory for the proposed Club Dock Replacement Project (proposed project). The project site occupies an approximately 0.25-acre area located at the shoreline near St. Catherine Way in the City of Avalon on Santa Catalina Island, Los Angeles County, California. The project site is located on the United States Geological Survey (USGS) Santa Catalina East 7.5-minute Quadrangle Map in Section 27 of Township 09 and Range 14 (see enclosed Figure 1). The project proposes to replace the existing club dock with an 80-foot-long gangway, the maximum length as required by the Americans with Disabilities Act (ADA). The connection at the sidewalk will be a simple hinge. The H-frame would be pile driven (or otherwise, it's close to the shore) and include a hoist which would allow City staff to raise the gangway and pin it in place above a heavy swell when required. The work will all be within disturbed areas both upland and underwater replacing deteriorated infrastructure.

As part of the process of identifying potential cultural resources, South Environmental contacted the Native American Heritage Commission (NAHC) and requested a Sacred Lands File search on May 3, 2024. The NAHC has not yet responded; however, we anticipate they will recommend we contact you to seek comment.

If you have any knowledge of cultural resources that may exist within or near the project site, please contact me at [sjovanovic@southenvironmental.com](mailto:sjovanovic@southenvironmental.com) or 562-900-8816, or via U.S. mail at the address above.

Please note that the request herein is for informational purposes only and does not constitute Assembly Bill 52 notification or initiation of consultation.

Respectfully submitted,



Samantha Jovanovic  
Archaeologist

Attachment: Figure 1. Project Location Map



May 3, 2024

Pechanga Band of Luiseño Indians  
Paul Macarro, Cultural Resources Coordinator  
P.O. Box 1477  
Temecula, CA 92593  
[pmacarro@pechanga-nsn.gov](mailto:pmacarro@pechanga-nsn.gov)

**RE: Club Dock Replacement Project, City of Avalon, Santa Catalina Island, Los Angeles County, California**

Dear Coordinator Macarro:

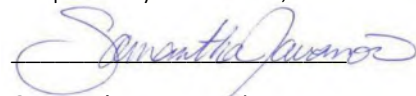
South Environmental was retained to conduct a cultural resources inventory for the proposed Club Dock Replacement Project (proposed project). The project site occupies an approximately 0.25-acre area located at the shoreline near St. Catherine Way in the City of Avalon on Santa Catalina Island, Los Angeles County, California. The project site is located on the United States Geological Survey (USGS) Santa Catalina East 7.5-minute Quadrangle Map in Section 27 of Township 09 and Range 14 (see enclosed Figure 1). The project proposes to replace the existing club dock with an 80-foot-long gangway, the maximum length as required by the Americans with Disabilities Act (ADA). The connection at the sidewalk will be a simple hinge. The H-frame would be pile driven (or otherwise, it's close to the shore) and include a hoist which would allow City staff to raise the gangway and pin it in place above a heavy swell when required. The work will all be within disturbed areas both upland and underwater replacing deteriorated infrastructure.

As part of the process of identifying potential cultural resources, South Environmental contacted the Native American Heritage Commission (NAHC) and requested a Sacred Lands File search on May 3, 2024. The NAHC has not yet responded; however, we anticipate they will recommend we contact you to seek comment.

If you have any knowledge of cultural resources that may exist within or near the project site, please contact me at [sjovanovic@southenvironmental.com](mailto:sjovanovic@southenvironmental.com) or 562-900-8816, or via U.S. mail at the address above.

Please note that the request herein is for informational purposes only and does not constitute Assembly Bill 52 notification or initiation of consultation.

Respectfully submitted,



Samantha Jovanovic  
Archaeologist

Attachment: Figure 1. Project Location Map



May 3, 2024

Gabrieleno Band of Mission Indians - Kizh Nation  
Andrew Salas, Chairperson  
P.O. Box 393  
Covina, CA 91723  
[admin@gabrielenoindians.org](mailto:admin@gabrielenoindians.org)

**RE: Club Dock Replacement Project, City of Avalon, Santa Catalina Island, Los Angeles County, California**

Dear Chairperson Salas:

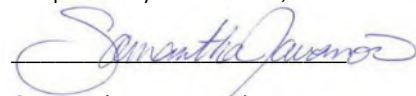
South Environmental was retained to conduct a cultural resources inventory for the proposed Club Dock Replacement Project (proposed project). The project site occupies an approximately 0.25-acre area located at the shoreline near St. Catherine Way in the City of Avalon on Santa Catalina Island, Los Angeles County, California. The project site is located on the United States Geological Survey (USGS) Santa Catalina East 7.5-minute Quadrangle Map in Section 27 of Township 09 and Range 14 (see enclosed Figure 1). The project proposes to replace the existing club dock with an 80-foot-long gangway, the maximum length as required by the Americans with Disabilities Act (ADA). The connection at the sidewalk will be a simple hinge. The H-frame would be pile driven (or otherwise, it's close to the shore) and include a hoist which would allow City staff to raise the gangway and pin it in place above a heavy swell when required. The work will all be within disturbed areas both upland and underwater replacing deteriorated infrastructure.

As part of the process of identifying potential cultural resources, South Environmental contacted the Native American Heritage Commission (NAHC) and requested a Sacred Lands File search on May 3, 2024. The NAHC has not yet responded; however, we anticipate they will recommend we contact you to seek comment.

If you have any knowledge of cultural resources that may exist within or near the project site, please contact me at [sjovanovic@southenvironmental.com](mailto:sjovanovic@southenvironmental.com) or 562-900-8816, or via U.S. mail at the address above.

Please note that the request herein is for informational purposes only and does not constitute Assembly Bill 52 notification or initiation of consultation.

Respectfully submitted,



Samantha Jovanovic  
Archaeologist

Attachment: Figure 1. Project Location Map



May 31, 2024

Gabrielino Tongva Indians of California Tribal Council  
Christina Conley, Cultural Resource Administrator  
P.O. Box 941078  
Simi Valley, CA 93094  
Email: [christina.marsden@alumni.usc.edu](mailto:christina.marsden@alumni.usc.edu)

**RE: Club Dock Replacement Project, City of Avalon, Santa Catalina Island, Los Angeles County, California**

Dear Administrator Conley:

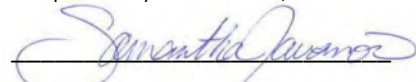
South Environmental was retained to conduct a cultural resources inventory for the proposed Club Dock Replacement Project (proposed project). The project site occupies an approximately 0.25-acre area located at the shoreline near St. Catherine Way in the City of Avalon on Santa Catalina Island, Los Angeles County, California. The project site is located on the United States Geological Survey (USGS) *Santa Catalina East, California* 7.5-minute Quadrangle Map in Section 27 of Township 09 and Range 14 (see enclosed Figure 1). The project proposes to replace the existing dock with an 80-foot-long gangway, the maximum length as required by the Americans with Disabilities Act (ADA). The connection at the sidewalk will be a simple hinge. The H-frame would be pile driven and include a hoist which would allow City staff to raise the gangway and pin it in place above a heavy swell when required. The work will all be within disturbed areas both upland and underwater replacing deteriorated infrastructure.

As part of the process of identifying potential cultural resources, South Environmental contacted the Native American Heritage Commission (NAHC) and requested a Sacred Lands File search on May 3, 2024. The NAHC responded to the request on May 29, 2024, and reported positive results. The NAHC also provided a list of tribal contacts who may have knowledge of the presence of cultural resources that may be impacted by the proposed Project.

If you have any knowledge of cultural resources that may exist within or near the project site, please contact me at [sjovanovic@southenvironmental.com](mailto:sjovanovic@southenvironmental.com) or 562-900-8816, or via U.S. mail at the address above.

Please note that the request herein is for informational purposes only and does not constitute Assembly Bill 52 notification or initiation of consultation.

Respectfully submitted,



Samantha Jovanovic  
Archaeologist

Attachment: Figure 1. Project Location Map



May 31, 2024

Gabrieleno Band of Mission Indians - Kizh Nation  
Christina Swindall Martinez, Secretary  
P.O. Box 393  
Covina, CA 91723  
Email: [admin@gabrielenoindians.org](mailto:admin@gabrielenoindians.org)

**RE: Club Dock Replacement Project, City of Avalon, Santa Catalina Island, Los Angeles County, California**

Dear Secretary Martinez:

South Environmental was retained to conduct a cultural resources inventory for the proposed Club Dock Replacement Project (proposed project). The project site occupies an approximately 0.25-acre area located at the shoreline near St. Catherine Way in the City of Avalon on Santa Catalina Island, Los Angeles County, California. The project site is located on the United States Geological Survey (USGS) *Santa Catalina East, California* 7.5-minute Quadrangle Map in Section 27 of Township 09 and Range 14 (see enclosed Figure 1). The project proposes to replace the existing dock with an 80-foot-long gangway, the maximum length as required by the Americans with Disabilities Act (ADA). The connection at the sidewalk will be a simple hinge. The H-frame would be pile driven and include a hoist which would allow City staff to raise the gangway and pin it in place above a heavy swell when required. The work will all be within disturbed areas both upland and underwater replacing deteriorated infrastructure.

As part of the process of identifying potential cultural resources, South Environmental contacted the Native American Heritage Commission (NAHC) and requested a Sacred Lands File search on May 3, 2024. The NAHC responded to the request on May 29, 2024, and reported positive results. The NAHC also provided a list of tribal contacts who may have knowledge of the presence of cultural resources that may be impacted by the proposed Project.

If you have any knowledge of cultural resources that may exist within or near the project site, please contact me at [sjovanovic@southenvironmental.com](mailto:sjovanovic@southenvironmental.com) or 562-900-8816, or via U.S. mail at the address above.

Please note that the request herein is for informational purposes only and does not constitute Assembly Bill 52 notification or initiation of consultation.

Respectfully submitted,



Samantha Jovanovic

Archaeologist

Attachment: Figure 1. Project Location Map



May 31, 2024

Pechanga Band of Indians  
Steve Bodmer, General Counsel for Pechanga Band of Indians  
P.O. Box 1477  
Temecula, CA 92593  
Email: [sbodmer@pechanga-nsn.gov](mailto:sbodmer@pechanga-nsn.gov)

**RE: Club Dock Replacement Project, City of Avalon, Santa Catalina Island, Los Angeles County, California**

Dear General Counsel Bodmer:

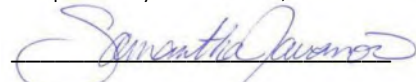
South Environmental was retained to conduct a cultural resources inventory for the proposed Club Dock Replacement Project (proposed project). The project site occupies an approximately 0.25-acre area located at the shoreline near St. Catherine Way in the City of Avalon on Santa Catalina Island, Los Angeles County, California. The project site is located on the United States Geological Survey (USGS) *Santa Catalina East, California* 7.5-minute Quadrangle Map in Section 27 of Township 09 and Range 14 (see enclosed Figure 1). The project proposes to replace the existing dock with an 80-foot-long gangway, the maximum length as required by the Americans with Disabilities Act (ADA). The connection at the sidewalk will be a simple hinge. The H-frame would be pile driven and include a hoist which would allow City staff to raise the gangway and pin it in place above a heavy swell when required. The work will all be within disturbed areas both upland and underwater replacing deteriorated infrastructure.

As part of the process of identifying potential cultural resources, South Environmental contacted the Native American Heritage Commission (NAHC) and requested a Sacred Lands File search on May 3, 2024. The NAHC responded to the request on May 29, 2024, and reported positive results. The NAHC also provided a list of tribal contacts who may have knowledge of the presence of cultural resources that may be impacted by the proposed Project.

If you have any knowledge of cultural resources that may exist within or near the project site, please contact me at [sjovanovic@southenvironmental.com](mailto:sjovanovic@southenvironmental.com) or 562-900-8816, or via U.S. mail at the address above.

Please note that the request herein is for informational purposes only and does not constitute Assembly Bill 52 notification or initiation of consultation.

Respectfully submitted,



Samantha Jovanovic  
Archaeologist

Attachment: Figure 1. Project Location Map



May 31, 2024

Santa Ynez Band of Chumash Indians  
Sam Cohen, Government & Legal Affairs Director  
100 Via Juana Road  
Santa Ynez, CA 93460  
Email: [scohen@chumash.gov](mailto:scohen@chumash.gov)

**RE: Club Dock Replacement Project, City of Avalon, Santa Catalina Island, Los Angeles County, California**

Dear Director Cohen:

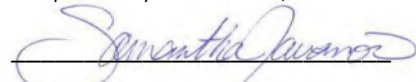
South Environmental was retained to conduct a cultural resources inventory for the proposed Club Dock Replacement Project (proposed project). The project site occupies an approximately 0.25-acre area located at the shoreline near St. Catherine Way in the City of Avalon on Santa Catalina Island, Los Angeles County, California. The project site is located on the United States Geological Survey (USGS) *Santa Catalina East, California* 7.5-minute Quadrangle Map in Section 27 of Township 09 and Range 14 (see enclosed Figure 1). The project proposes to replace the existing dock with an 80-foot-long gangway, the maximum length as required by the Americans with Disabilities Act (ADA). The connection at the sidewalk will be a simple hinge. The H-frame would be pile driven and include a hoist which would allow City staff to raise the gangway and pin it in place above a heavy swell when required. The work will all be within disturbed areas both upland and underwater replacing deteriorated infrastructure.

As part of the process of identifying potential cultural resources, South Environmental contacted the Native American Heritage Commission (NAHC) and requested a Sacred Lands File search on May 3, 2024. The NAHC responded to the request on May 29, 2024, and reported positive results. The NAHC also provided a list of tribal contacts who may have knowledge of the presence of cultural resources that may be impacted by the proposed Project.

If you have any knowledge of cultural resources that may exist within or near the project site, please contact me at [sjovanovic@southenvironmental.com](mailto:sjovanovic@southenvironmental.com) or 562-900-8816, or via U.S. mail at the address above.

Please note that the request herein is for informational purposes only and does not constitute Assembly Bill 52 notification or initiation of consultation.

Respectfully submitted,



Samantha Jovanovic  
Archaeologist

Attachment: Figure 1. Project Location Map



May 31, 2024

Santa Ynez Band of Chumash Indians  
Crystal Mendoza, Elders' Council Administrative Assistant  
100 Via Juana Road  
Santa Ynez, CA 93460  
Email: [cmendoza@chumash.gov](mailto:cmendoza@chumash.gov)

**RE: Club Dock Replacement Project, City of Avalon, Santa Catalina Island, Los Angeles County, California**

Dear Assistant Mendoza:

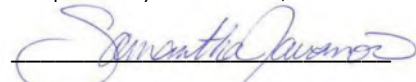
South Environmental was retained to conduct a cultural resources inventory for the proposed Club Dock Replacement Project (proposed project). The project site occupies an approximately 0.25-acre area located at the shoreline near St. Catherine Way in the City of Avalon on Santa Catalina Island, Los Angeles County, California. The project site is located on the United States Geological Survey (USGS) *Santa Catalina East, California* 7.5-minute Quadrangle Map in Section 27 of Township 09 and Range 14 (see enclosed Figure 1). The project proposes to replace the existing dock with an 80-foot-long gangway, the maximum length as required by the Americans with Disabilities Act (ADA). The connection at the sidewalk will be a simple hinge. The H-frame would be pile driven and include a hoist which would allow City staff to raise the gangway and pin it in place above a heavy swell when required. The work will all be within disturbed areas both upland and underwater replacing deteriorated infrastructure.

As part of the process of identifying potential cultural resources, South Environmental contacted the Native American Heritage Commission (NAHC) and requested a Sacred Lands File search on May 3, 2024. The NAHC responded to the request on May 29, 2024, and reported positive results. The NAHC also provided a list of tribal contacts who may have knowledge of the presence of cultural resources that may be impacted by the proposed Project.

If you have any knowledge of cultural resources that may exist within or near the project site, please contact me at [sjovanovic@southenvironmental.com](mailto:sjovanovic@southenvironmental.com) or 562-900-8816, or via U.S. mail at the address above.

Please note that the request herein is for informational purposes only and does not constitute Assembly Bill 52 notification or initiation of consultation.

Respectfully submitted,



Samantha Jovanovic  
Archaeologist

Attachment: Figure 1. Project Location Map



May 31, 2024

Gabrielino-Tongva Tribe  
Sam Dunlap, Cultural Resource Director  
P.O. Box 3919  
Seal Beach, CA 90740  
Email: [tongvatcr@gmail.com](mailto:tongvatcr@gmail.com)

**RE: Club Dock Replacement Project, City of Avalon, Santa Catalina Island, Los Angeles County, California**

Dear Director Dunlap:

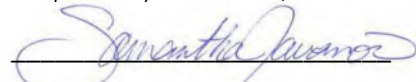
South Environmental was retained to conduct a cultural resources inventory for the proposed Club Dock Replacement Project (proposed project). The project site occupies an approximately 0.25-acre area located at the shoreline near St. Catherine Way in the City of Avalon on Santa Catalina Island, Los Angeles County, California. The project site is located on the United States Geological Survey (USGS) *Santa Catalina East, California* 7.5-minute Quadrangle Map in Section 27 of Township 09 and Range 14 (see enclosed Figure 1). The project proposes to replace the existing dock with an 80-foot-long gangway, the maximum length as required by the Americans with Disabilities Act (ADA). The connection at the sidewalk will be a simple hinge. The H-frame would be pile driven and include a hoist which would allow City staff to raise the gangway and pin it in place above a heavy swell when required. The work will all be within disturbed areas both upland and underwater replacing deteriorated infrastructure.

As part of the process of identifying potential cultural resources, South Environmental contacted the Native American Heritage Commission (NAHC) and requested a Sacred Lands File search on May 3, 2024. The NAHC responded to the request on May 29, 2024, and reported positive results. The NAHC also provided a list of tribal contacts who may have knowledge of the presence of cultural resources that may be impacted by the proposed Project.

If you have any knowledge of cultural resources that may exist within or near the project site, please contact me at [sjovanovic@southenvironmental.com](mailto:sjovanovic@southenvironmental.com) or 562-900-8816, or via U.S. mail at the address above.

Please note that the request herein is for informational purposes only and does not constitute Assembly Bill 52 notification or initiation of consultation.

Respectfully submitted,



Samantha Jovanovic  
Archaeologist

Attachment: Figure 1. Project Location Map



May 31, 2024

Rincon Band of Luiseno Indians  
Laurie Gonzalez, Tribal Council/Culture Committee Member  
One Government Center Lane  
Valley Center, CA 92082  
Email: [lgonzalez@rincon-nsn.gov](mailto:lgonzalez@rincon-nsn.gov)

**RE: Club Dock Replacement Project, City of Avalon, Santa Catalina Island, Los Angeles County, California**

Dear Council Member Gonzalez:

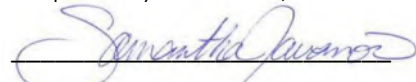
South Environmental was retained to conduct a cultural resources inventory for the proposed Club Dock Replacement Project (proposed project). The project site occupies an approximately 0.25-acre area located at the shoreline near St. Catherine Way in the City of Avalon on Santa Catalina Island, Los Angeles County, California. The project site is located on the United States Geological Survey (USGS) *Santa Catalina East, California* 7.5-minute Quadrangle Map in Section 27 of Township 09 and Range 14 (see enclosed Figure 1). The project proposes to replace the existing dock with an 80-foot-long gangway, the maximum length as required by the Americans with Disabilities Act (ADA). The connection at the sidewalk will be a simple hinge. The H-frame would be pile driven and include a hoist which would allow City staff to raise the gangway and pin it in place above a heavy swell when required. The work will all be within disturbed areas both upland and underwater replacing deteriorated infrastructure.

As part of the process of identifying potential cultural resources, South Environmental contacted the Native American Heritage Commission (NAHC) and requested a Sacred Lands File search on May 3, 2024. The NAHC responded to the request on May 29, 2024, and reported positive results. The NAHC also provided a list of tribal contacts who may have knowledge of the presence of cultural resources that may be impacted by the proposed Project.

If you have any knowledge of cultural resources that may exist within or near the project site, please contact me at [sjovanovic@southenvironmental.com](mailto:sjovanovic@southenvironmental.com) or 562-900-8816, or via U.S. mail at the address above.

Please note that the request herein is for informational purposes only and does not constitute Assembly Bill 52 notification or initiation of consultation.

Respectfully submitted,



Samantha Jovanovic  
Archaeologist

Attachment: Figure 1. Project Location Map



May 31, 2024

Rincon Band of Luiseno Indians  
Joseph Linton, Tribal Council/Culture Committee Member  
One Government Center Lane  
Valley Center, CA 92082  
Email: [jlinton@rincon-nsn.gov](mailto:jlinton@rincon-nsn.gov)

**RE: Club Dock Replacement Project, City of Avalon, Santa Catalina Island, Los Angeles County, California**

Dear Council Member Linton:

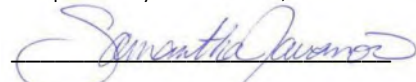
South Environmental was retained to conduct a cultural resources inventory for the proposed Club Dock Replacement Project (proposed project). The project site occupies an approximately 0.25-acre area located at the shoreline near St. Catherine Way in the City of Avalon on Santa Catalina Island, Los Angeles County, California. The project site is located on the United States Geological Survey (USGS) *Santa Catalina East, California* 7.5-minute Quadrangle Map in Section 27 of Township 09 and Range 14 (see enclosed Figure 1). The project proposes to replace the existing dock with an 80-foot-long gangway, the maximum length as required by the Americans with Disabilities Act (ADA). The connection at the sidewalk will be a simple hinge. The H-frame would be pile driven and include a hoist which would allow City staff to raise the gangway and pin it in place above a heavy swell when required. The work will all be within disturbed areas both upland and underwater replacing deteriorated infrastructure.

As part of the process of identifying potential cultural resources, South Environmental contacted the Native American Heritage Commission (NAHC) and requested a Sacred Lands File search on May 3, 2024. The NAHC responded to the request on May 29, 2024, and reported positive results. The NAHC also provided a list of tribal contacts who may have knowledge of the presence of cultural resources that may be impacted by the proposed Project.

If you have any knowledge of cultural resources that may exist within or near the project site, please contact me at [sjovanovic@southenvironmental.com](mailto:sjovanovic@southenvironmental.com) or 562-900-8816, or via U.S. mail at the address above.

Please note that the request herein is for informational purposes only and does not constitute Assembly Bill 52 notification or initiation of consultation.

Respectfully submitted,



Samantha Jovanovic  
Archaeologist

Attachment: Figure 1. Project Location Map



May 31, 2024

Juaneno Band of Mission Indians Acjachemen Nation 84A  
Heidi Lucero, Chairperson, THPO  
31411-A La Matanza Street  
San Juan Capistrano, CA 92675  
Email: [jbmian.chairwoman@gmail.com](mailto:jbmian.chairwoman@gmail.com)

**RE: Club Dock Replacement Project, City of Avalon, Santa Catalina Island, Los Angeles County, California**

Dear THPO Lucero:

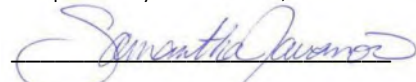
South Environmental was retained to conduct a cultural resources inventory for the proposed Club Dock Replacement Project (proposed project). The project site occupies an approximately 0.25-acre area located at the shoreline near St. Catherine Way in the City of Avalon on Santa Catalina Island, Los Angeles County, California. The project site is located on the United States Geological Survey (USGS) *Santa Catalina East, California* 7.5-minute Quadrangle Map in Section 27 of Township 09 and Range 14 (see enclosed Figure 1). The project proposes to replace the existing dock with an 80-foot-long gangway, the maximum length as required by the Americans with Disabilities Act (ADA). The connection at the sidewalk will be a simple hinge. The H-frame would be pile driven and include a hoist which would allow City staff to raise the gangway and pin it in place above a heavy swell when required. The work will all be within disturbed areas both upland and underwater replacing deteriorated infrastructure.

As part of the process of identifying potential cultural resources, South Environmental contacted the Native American Heritage Commission (NAHC) and requested a Sacred Lands File search on May 3, 2024. The NAHC responded to the request on May 29, 2024, and reported positive results. The NAHC also provided a list of tribal contacts who may have knowledge of the presence of cultural resources that may be impacted by the proposed Project.

If you have any knowledge of cultural resources that may exist within or near the project site, please contact me at [sjovanovic@southenvironmental.com](mailto:sjovanovic@southenvironmental.com) or 562-900-8816, or via U.S. mail at the address above.

Please note that the request herein is for informational purposes only and does not constitute Assembly Bill 52 notification or initiation of consultation.

Respectfully submitted,



Samantha Jovanovic  
Archaeologist

Attachment: Figure 1. Project Location Map



May 31, 2024

Pechanga Band of Indians  
Tuba Ebru Ozdil, Pechanga Cultural Analyst  
P.O. Box 2183  
Temecula, CA 92593  
Email: [eozdil@pechanga-nsn.gov](mailto:eozdil@pechanga-nsn.gov)

**RE: Club Dock Replacement Project, City of Avalon, Santa Catalina Island, Los Angeles County, California**

Dear Analyst Ozdil:

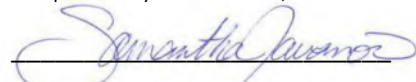
South Environmental was retained to conduct a cultural resources inventory for the proposed Club Dock Replacement Project (proposed project). The project site occupies an approximately 0.25-acre area located at the shoreline near St. Catherine Way in the City of Avalon on Santa Catalina Island, Los Angeles County, California. The project site is located on the United States Geological Survey (USGS) *Santa Catalina East, California* 7.5-minute Quadrangle Map in Section 27 of Township 09 and Range 14 (see enclosed Figure 1). The project proposes to replace the existing dock with an 80-foot-long gangway, the maximum length as required by the Americans with Disabilities Act (ADA). The connection at the sidewalk will be a simple hinge. The H-frame would be pile driven and include a hoist which would allow City staff to raise the gangway and pin it in place above a heavy swell when required. The work will all be within disturbed areas both upland and underwater replacing deteriorated infrastructure.

As part of the process of identifying potential cultural resources, South Environmental contacted the Native American Heritage Commission (NAHC) and requested a Sacred Lands File search on May 3, 2024. The NAHC responded to the request on May 29, 2024, and reported positive results. The NAHC also provided a list of tribal contacts who may have knowledge of the presence of cultural resources that may be impacted by the proposed Project.

If you have any knowledge of cultural resources that may exist within or near the project site, please contact me at [sjovanovic@southenvironmental.com](mailto:sjovanovic@southenvironmental.com) or 562-900-8816, or via U.S. mail at the address above.

Please note that the request herein is for informational purposes only and does not constitute Assembly Bill 52 notification or initiation of consultation.

Respectfully submitted,



Samantha Jovanovic  
Archaeologist

Attachment: Figure 1. Project Location Map



May 31, 2024

Santa Ynez Band of Chumash Indians  
Wendy Teeter, Cultural Resources Archaeologist  
100 Via Juana Road  
Santa Ynez, CA 93460  
Email: [wteeter@chumash.gov](mailto:wteeter@chumash.gov)

**RE: Club Dock Replacement Project, City of Avalon, Santa Catalina Island, Los Angeles County, California**

Dear Archaeologist Teeter:

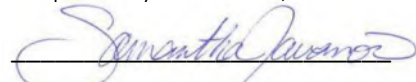
South Environmental was retained to conduct a cultural resources inventory for the proposed Club Dock Replacement Project (proposed project). The project site occupies an approximately 0.25-acre area located at the shoreline near St. Catherine Way in the City of Avalon on Santa Catalina Island, Los Angeles County, California. The project site is located on the United States Geological Survey (USGS) *Santa Catalina East, California* 7.5-minute Quadrangle Map in Section 27 of Township 09 and Range 14 (see enclosed Figure 1). The project proposes to replace the existing dock with an 80-foot-long gangway, the maximum length as required by the Americans with Disabilities Act (ADA). The connection at the sidewalk will be a simple hinge. The H-frame would be pile driven and include a hoist which would allow City staff to raise the gangway and pin it in place above a heavy swell when required. The work will all be within disturbed areas both upland and underwater replacing deteriorated infrastructure.

As part of the process of identifying potential cultural resources, South Environmental contacted the Native American Heritage Commission (NAHC) and requested a Sacred Lands File search on May 3, 2024. The NAHC responded to the request on May 29, 2024, and reported positive results. The NAHC also provided a list of tribal contacts who may have knowledge of the presence of cultural resources that may be impacted by the proposed Project.

If you have any knowledge of cultural resources that may exist within or near the project site, please contact me at [sjovanovic@southenvironmental.com](mailto:sjovanovic@southenvironmental.com) or 562-900-8816, or via U.S. mail at the address above.

Please note that the request herein is for informational purposes only and does not constitute Assembly Bill 52 notification or initiation of consultation.

Respectfully submitted,



Samantha Jovanovic  
Archaeologist

Attachment: Figure 1. Project Location Map



May 31, 2024

Rincon Band of Luiseno Indians  
Denise Turner Walsh, Attorney General  
One Government Center Lane  
Valley Center, CA 92082  
Email: [dwalsh@rincon-nsn.gov](mailto:dwalsh@rincon-nsn.gov)

**RE: Club Dock Replacement Project, City of Avalon, Santa Catalina Island, Los Angeles County, California**

Dear Attorney General Turner Walsh:

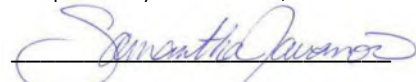
South Environmental was retained to conduct a cultural resources inventory for the proposed Club Dock Replacement Project (proposed project). The project site occupies an approximately 0.25-acre area located at the shoreline near St. Catherine Way in the City of Avalon on Santa Catalina Island, Los Angeles County, California. The project site is located on the United States Geological Survey (USGS) *Santa Catalina East, California* 7.5-minute Quadrangle Map in Section 27 of Township 09 and Range 14 (see enclosed Figure 1). The project proposes to replace the existing dock with an 80-foot-long gangway, the maximum length as required by the Americans with Disabilities Act (ADA). The connection at the sidewalk will be a simple hinge. The H-frame would be pile driven and include a hoist which would allow City staff to raise the gangway and pin it in place above a heavy swell when required. The work will all be within disturbed areas both upland and underwater replacing deteriorated infrastructure.

As part of the process of identifying potential cultural resources, South Environmental contacted the Native American Heritage Commission (NAHC) and requested a Sacred Lands File search on May 3, 2024. The NAHC responded to the request on May 29, 2024, and reported positive results. The NAHC also provided a list of tribal contacts who may have knowledge of the presence of cultural resources that may be impacted by the proposed Project.

If you have any knowledge of cultural resources that may exist within or near the project site, please contact me at [sjovanovic@southenvironmental.com](mailto:sjovanovic@southenvironmental.com) or 562-900-8816, or via U.S. mail at the address above.

Please note that the request herein is for informational purposes only and does not constitute Assembly Bill 52 notification or initiation of consultation.

Respectfully submitted,



Samantha Jovanovic  
Archaeologist

Attachment: Figure 1. Project Location Map



May 31, 2024

Santa Ynez Band of Chumash Indians  
Nakia Zavalla, Tribal Historic Preservation Officer  
100 Via Juana Road  
Santa Ynez, CA 93460  
Email: [nzavalla@chumash.gov](mailto:nzavalla@chumash.gov)

**RE: Club Dock Replacement Project, City of Avalon, Santa Catalina Island, Los Angeles County, California**

Dear THPO Zavalla:

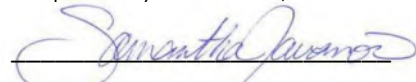
South Environmental was retained to conduct a cultural resources inventory for the proposed Club Dock Replacement Project (proposed project). The project site occupies an approximately 0.25-acre area located at the shoreline near St. Catherine Way in the City of Avalon on Santa Catalina Island, Los Angeles County, California. The project site is located on the United States Geological Survey (USGS) *Santa Catalina East, California* 7.5-minute Quadrangle Map in Section 27 of Township 09 and Range 14 (see enclosed Figure 1). The project proposes to replace the existing dock with an 80-foot-long gangway, the maximum length as required by the Americans with Disabilities Act (ADA). The connection at the sidewalk will be a simple hinge. The H-frame would be pile driven and include a hoist which would allow City staff to raise the gangway and pin it in place above a heavy swell when required. The work will all be within disturbed areas both upland and underwater replacing deteriorated infrastructure.

As part of the process of identifying potential cultural resources, South Environmental contacted the Native American Heritage Commission (NAHC) and requested a Sacred Lands File search on May 3, 2024. The NAHC responded to the request on May 29, 2024, and reported positive results. The NAHC also provided a list of tribal contacts who may have knowledge of the presence of cultural resources that may be impacted by the proposed Project.

If you have any knowledge of cultural resources that may exist within or near the project site, please contact me at [sjovanovic@southenvironmental.com](mailto:sjovanovic@southenvironmental.com) or 562-900-8816, or via U.S. mail at the address above.

Please note that the request herein is for informational purposes only and does not constitute Assembly Bill 52 notification or initiation of consultation.

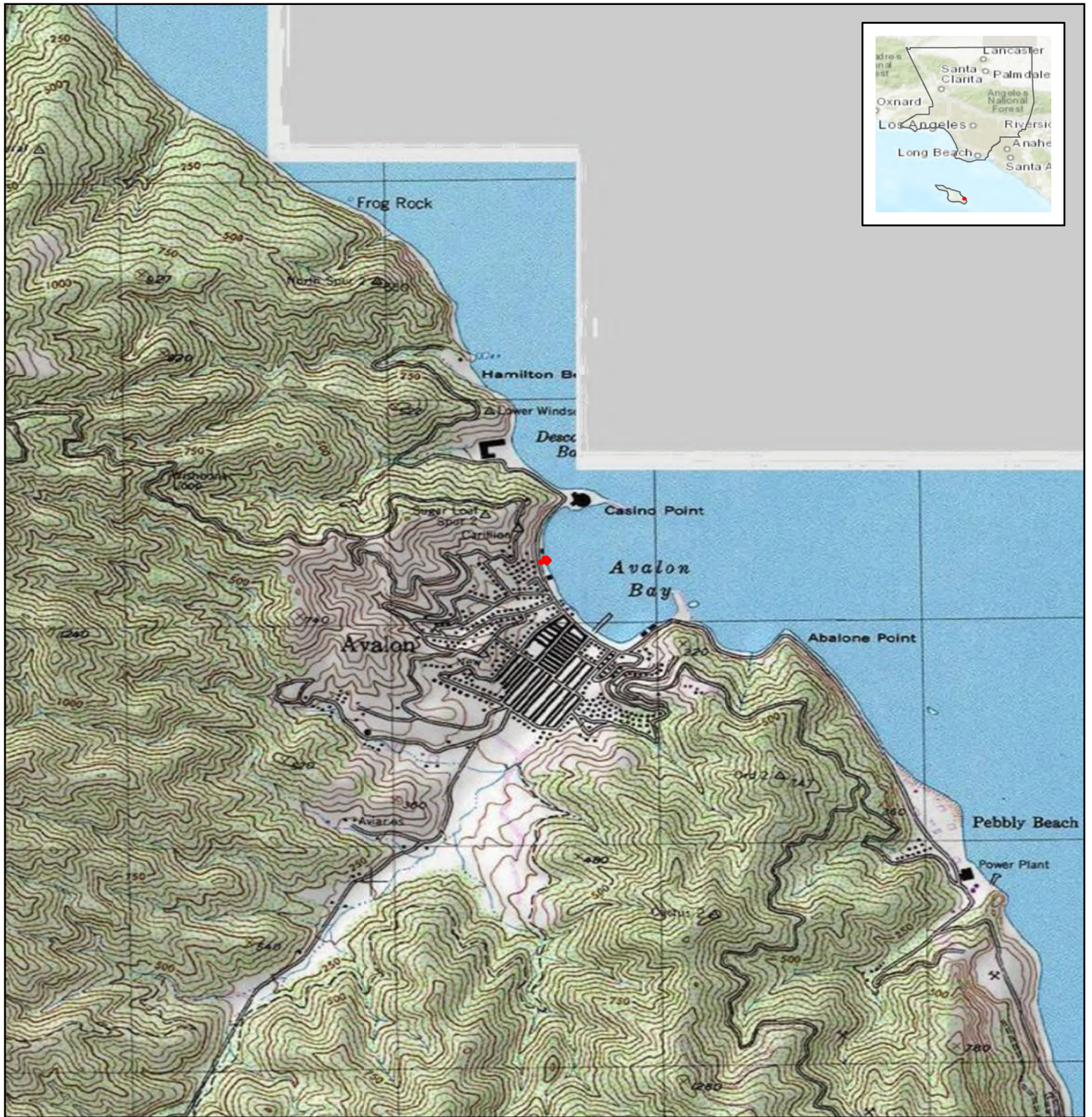
Respectfully submitted,



Samantha Jovanovic  
Archaeologist

Attachment: Figure 1. Project Location Map





Source: ESRI USA Topo Maps and World Topo Map 2024

Club Dock Replacement Project

# Figure 1. Project Location Map

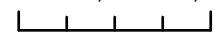
Project Site

Project Location is within Avalon, California, in Los Angeles County on the USGS Santa Catalina East 7.5-minute quadrangle map in Section 27 of Township 09 South and Range 14 West

Center Coordinate (Decimal Degrees):  
 Latitude: 33.3463862N Longitude: -118.3270814W



0 1,000 2,000 Feet



Scale: 1: 24,000





*Santa Ynez Band of Chumash Indians*  
*Tribal Elders' Council*

P.O. Box 517 ♦ Santa Ynez ♦ CA ♦ 93460

Phone: (805)688-7997 ♦ Fax: (805)688-9578

Monday, June 24, 2024

South Environmental  
2061 N. Los Robles Avenue, Ste.205  
Pasadena, CA 91104

Att.: Samantha Jovanovic, Archaeologist

Re: Avalon Club Dock Replacement

Dear Ms. Jovanovic:

Thank you for contacting the Tribal Elders' Council for the Santa Ynez Band of Chumash Indians. We would like to have a formal consultation with regards to the above-mentioned project.

Please contact Cultural Resource Archaeologist, Dr. Wendy Teeter at your earliest availability for a time and date. You may contact her via email, phone or mail. See below for contact information.

[wteeter@chumash.org](mailto:wteeter@chumash.org) ; (805) 325-8630  
P.O. Box 517, Santa Ynez, CA 93460

Thank you for your time and attention to this matter.

Sincerely Yours,

*Crystal Mendoza*

Crystal Mendoza  
Administrative Assistant | Cultural Resources  
Santa Ynez Band of Chumash Indians | Tribal Hall  
(805) 325-5537  
cmendoza@chumash.gov

# Rincon Band of Luiseño Indians

## CULTURAL RESOURCES DEPARTMENT

---

One Government Center Lane | Valley Center | CA 92082  
(760) 749-1092 | Fax: (760) 749-8901 | rincon-nsn.gov



June 3, 2024

Sent via email: [sjovanovic@southenvirionmental.com](mailto:sjovanovic@southenvirionmental.com)

### Re: Club Dock Replacement Project, City of Avalon, California

Dear Ms. Jovanovic,

This letter is written on behalf of the Rincon Band of Luiseño Indians (“Rincon Band” or “Tribe”), a federally recognized Indian tribe and sovereign government. We have received your notification regarding the above referenced project and we thank you for the opportunity to consult on the project. The identified location is within the Traditional Use Area of the Luiseño people and within the Tribe’s specific Area of Historic Interest (AHI). As such, the Rincon Band is traditionally and culturally affiliated to the project area.

After review of the provided documents and our internal information, the Rincon Band has specific concerns that the project may impact tangible Tribal Cultural Resources. The project site is culturally sensitive, with many resources and known gathering areas. At this time the Rincon Band would like to consult directly with the lead agency, to review any potential impacts in this project site.

If you have additional questions or concerns, please do not hesitate to contact our office at your convenience at (760) 749 1092 ext. 320 or via electronic mail at [slinton@rincon-nsn.gov](mailto:slinton@rincon-nsn.gov). Thank you for the opportunity to protect and preserve our cultural assets.

Sincerely,



Shuuluk Linton  
Tribal Historic Preservation Coordinator  
Cultural Resources Department

## Club Dock Replacement Project, City of Avalon, Santa Catalina Island, Los Angeles County, California

Christina Marsden Conley <christina.marsden@alumni.usc.edu>

Tue 5/7/2024 10:04 AM

To:Samantha Jovanovic <sjovanovic@southernenvironmental.com>

Cc:Robert Dorame <gtongva@gmail.com>

Good morning,

We are in receipt of your project location and are highly concerned with respect to tribal cultural resources that are there. Please let us know of your next steps and we will need to be there to monitor the ground disturbances.

Thank you,

tehoovet taamet

CHRISTINA CONLEY

•Cultural Resource Administrator Under Tribal Chair, Robert Dorame

•HAZWOPER Certified

•626.407.8761

[https://file.lacounty.gov/SDSInter/lac/1137966\\_AREPORTONHARMSCountyofLosAngeles.pdf](https://file.lacounty.gov/SDSInter/lac/1137966_AREPORTONHARMSCountyofLosAngeles.pdf)

### GABRIELINO TONGVA INDIANS OF CALIFORNIA

The Gabrielino Tongva Indians of California tribe is traditionally and culturally recognized in the State of California Bill AJR96 as the aboriginal tribe to encompass the entire Los Angeles Basin area to Laguna Beach, extending to the Channel Islands of Santa Catalina, San Nicholas and San Clemente Islands



This e-mail transmission and any documents, files or previous e-mail messages attached to it, maybe privileged and confidential and is intended only for the use of the intended recipient of this message. If you are not the intended recipient, or a person responsible for delivering it to the intended recipient, you are hereby notified that any review, disclosure, retention, copying, dissemination, distribution or use of any of the information contained in, or attached to this e-mail transmission is STRICTLY PROHIBITED. If you have received this transmission in error, please immediately notify me by return email or by telephone at the above number and delete the message and its attachments.

## Re: Scoping Letter: Club Dock Replacement Project, Avalon, Santa Catalina Island

Christina Marsden Conley <christina.marsden@alumni.usc.edu>

Fri 5/31/2024 3:34 PM

To:Samantha Jovanovic <sjovanovic@southenvironmental.com>

Good afternoon,

This area is highly sensitive for cultural resources. We will need our tribal monitor there for ALL ground disturbances.

Please keep me informed on the status.

Also, the South Beach Restoration Project, what is the status of that?

Thank you kindly and have a restful weekend,  
Christina

tehoovet taamet

CHRISTINA CONLEY

•Tribal Cultural Resource Administrator Under Tribal Chair, Robert Dorame

•Catalina Tribal Coalition

•California Coalition of State Tribes, Executive Board

•HAZWOPER Certified

[https://file.lacounty.gov/SDSInter/lac/1137966\\_AREPORTONHARMSCountyofLosAngeles.pdf](https://file.lacounty.gov/SDSInter/lac/1137966_AREPORTONHARMSCountyofLosAngeles.pdf)

---

GABRIELINO TONGVA INDIANS OF CALIFORNIA

The Gabrielino Tongva Indians of California tribe is traditionally and culturally recognized in the State of California Bill AJR96 as the aboriginal tribe to encompass the entire Los Angeles Basin area to Laguna Beach, extending to the Channel Islands of Santa Catalina, San Nicholas and San Clemente Islands



This e-mail transmission and any documents, files or previous e-mail messages attached to it, maybe privileged and confidential and is intended only for the use of the intended recipient of this message. If you are not the intended recipient, or a person responsible for delivering it to the intended recipient, you are hereby notified that any review, disclosure, retention, copying, dissemination, distribution or use of any of the information contained in, or attached to this e-mail transmission is STRICTLY PROHIBITED. If you have received this transmission in error, please immediately notify me by return email or by telephone at the above number and delete the message and its attachments.

On May 31, 2024, at 2:48 PM, Samantha Jovanovic  
<sjovanovic@southenvironmental.com> wrote:

Dear Administrator Conley,

Attached please find a scoping letter for the above referenced project.

Please contact me if you have questions or comments.

Regards,

Samantha Jovanovic, MA, MS  
Archaeologist  
<Outlook-b15n5f4o.png>  
Mobile: 562.900.8816  
[www.southenvironmental.com](http://www.southenvironmental.com)  
<Avalon Club Dock Replacement\_ Conley.pdf>

**Read: {EXTERNAL} Fw: Scoping Letter: Club Dock Replacement Project, Avalon, Santa Catalina Island**

Sam Cohen <scohen@chumash.gov>

Thu 6/20/2024 9:30 AM

To:Samantha Jovanovic <sjovanovic@southernenvironmental.com>

Your message

To: Sam Cohen

Subject: {EXTERNAL} Fw: Scoping Letter: Club Dock Replacement Project, Avalon, Santa Catalina Island

Sent: Thursday, June 20, 2024 9:13:09 AM (UTC-08:00) Pacific Time (US & Canada)

was read on Thursday, June 20, 2024 9:28:57 AM (UTC-08:00) Pacific Time (US & Canada).

**Read: {EXTERNAL} Fw: Scoping Letter: Club Dock Replacement Project, Avalon, Santa Catalina Island**

Wendy Teeter <wteeter@chumash.gov>

Thu 6/20/2024 9:47 AM

To:Samantha Jovanovic <sjovanovic@southernenvironmental.com>

Your message

To: Wendy Teeter

Subject: {EXTERNAL} Fw: Scoping Letter: Club Dock Replacement Project, Avalon, Santa Catalina Island

Sent: Thursday, June 20, 2024 9:07:45 AM (UTC-08:00) Pacific Time (US & Canada)

was read on Thursday, June 20, 2024 9:47:42 AM (UTC-08:00) Pacific Time (US & Canada).

**Read: {EXTERNAL} Scoping Letter: Club Dock Replacement Project, Avalon, Santa Catalina Island**

Wendy Teeter <wteeter@chumash.gov>

Fri 5/31/2024 4:01 PM

To:Samantha Jovanovic <sjovanovic@southenvironmental.com>

Your message

To: Wendy Teeter

Subject: {EXTERNAL} Scoping Letter: Club Dock Replacement Project, Avalon, Santa Catalina Island

Sent: Friday, May 31, 2024 3:08:59 PM (UTC-08:00) Pacific Time (US & Canada)

was read on Friday, May 31, 2024 4:01:46 PM (UTC-08:00) Pacific Time (US & Canada).

**Read: {EXTERNAL} Scoping Letter: Club Dock Replacement Project, Avalon, Santa Catalina Island**

Crystal Mendoza <cmendoza@chumash.gov>

Mon 6/17/2024 12:47 PM

To:Samantha Jovanovic <sjovanovic@southenvironmental.com>

Your message

To: Crystal Mendoza

Subject: {EXTERNAL} Scoping Letter: Club Dock Replacement Project, Avalon, Santa Catalina Island

Sent: Friday, May 31, 2024 3:04:44 PM (UTC-08:00) Pacific Time (US & Canada)

was read on Monday, June 17, 2024 12:46:15 PM (UTC-08:00) Pacific Time (US & Canada).

**Read: Scoping Letter: Club Dock Replacement Project, Avalon, Santa Catalina Island**

Cultural Resources Department <CRD@rincon-nsn.gov>

Fri 5/3/2024 2:59 PM

To:Samantha Jovanovic <sjovanovic@southenvironmental.com>

Your message

To: Cultural Resources Department

Subject: Scoping Letter: Club Dock Replacement Project, Avalon, Santa Catalina Island

Sent: Friday, May 3, 2024 2:55:20 PM (UTC-08:00) Pacific Time (US & Canada)

was read on Friday, May 3, 2024 2:58:35 PM (UTC-08:00) Pacific Time (US & Canada).

**Read: Scoping Letter: Club Dock Replacement Project, Avalon, Santa Catalina Island**

Paul Macarro <pmacarro@pechanga-nsn.gov>

Sun 5/5/2024 8:01 PM

To:Samantha Jovanovic <sjovanovic@southenvironmental.com>

Your message

To: Paul Macarro

Subject: Scoping Letter: Club Dock Replacement Project, Avalon, Santa Catalina Island

Sent: Friday, May 3, 2024 3:00:50 PM (UTC-08:00) Pacific Time (US & Canada)

was read on Sunday, May 5, 2024 8:01:23 PM (UTC-08:00) Pacific Time (US & Canada).

## Appendix C: Preparers' Qualifications

---

## EDUCATION

M.S., Conservation for  
Archaeology & Museums,  
University College London,  
2018

M.A., Principles of  
Conservation, University  
College London, 2016

B.S., Anthropology,  
University of California,  
Riverside, 2013

B.A., Art History, University of  
California, Riverside, 2013

## PROFESSIONAL

### AFFILIATIONS

Society for California  
Archaeology  
Assoc. for Environmental  
Archaeology

Assoc. for Environmental  
Professionals.

Geological Society of  
America

## PROFESSIONAL

### CERTIFICATIONS

Google Project Management  
Professional Certification,  
Coursera, (2021)

# Samantha Jovanovic, MS

## ARCHAEOLOGIST

Samantha Jovanovic is an archaeologist with over six years of professional experience in archaeology and museums, and supporting various cultural resources projects. Ms. Jovanovic currently works as an archaeologist and cultural resource technician at South Environmental LLC writing reports, performing pedestrian surveys, and monitoring in both urban and undeveloped contexts, and assessing artifacts and buildings for historical significance based on the National Register of Historic Places (NRHP), California Register of Historical Resources (CRHR), and local-level designation criteria. Ms. Jovanovic has analyzed hundreds of artifacts in several museum institutions ranging from several thousand years to less than a decade old.

## EXPERTISE

- CEQA, NAGPRA, and Section 106 of the NHPA compliance documentation in consideration of impacts to historical, archaeological, and tribal cultural resources, and historic properties.
- Resource significance evaluations in consideration of NRHP, CRHR, NAGPRA, ICOMOS (International Council of Monuments and Sites) and local designation criteria.
- Object conservation, stabilization, handling, and storage according to American Institute of Conservation (AIC) standards.

## RELEVANT PROJECT EXPERIENCE

**Metro Link Union Station (Link US) Utilities Project, Los Angeles, California (2024-ongoing).** South Environmental is a subconsultant to HDR Engineering, Inc. providing cultural resources services to the Los Angeles County Metropolitan Transportation Authority (Metro). Ms. Jovanovic serves as the lead archaeological monitor ensuring compliance with state and local codes for cultural resource protection. In the field, Ms. Jovanovic coordinates with LADWP and Rasic Construction field representatives, provides WEAP training, ensures HASP compliance of cultural resource monitors, monitors soil disturbing activities, and writes daily reports. Ms. Jovanovic collaborates with local tribal monitors on the identification and significance of artifacts found in the field. Ms. Jovanovic also provides oversight of additional archaeological monitors and compiles quarterly cultural resource reports.

**Vallarta Palmdale Supermarket Project (2024).** South Environmental was retained to complete a cultural resources study for this project to refurbish the existing grocery store and build a new one. Ms. Jovanovic served as field archaeologist, performing pedestrian survey, conducted cultural resources records search, Sacred Lands File search, Native American outreach, and was primary author of the comprehensive cultural resources technical report.

**Southern California Edison (SCE) Pole Upgrade Projects (2023).** Under Rincon Consultants, Ms. Jovanovic performed intensive-level archaeological surveys, historic built environment surveys, and evaluations around SCE power poles in various locations in Los Angeles, Orange, and Riverside Counties. These surveys seek to identify the presence of archaeological/historical resources.

**On-Call Southern California Gas Company (SoCalGas) Support (2023).** South Environmental is a sub-consultant to Rincon Consultants, Inc. on SoCalGas's on-call services contract and provides cultural resources services throughout SoCalGas's service territory. Ms. Jovanovic performs intensive-level pedestrian surveys of areas along gas lines in urban and undeveloped areas.

**Sequoia National Forest (SQNF) Survey of Windy and Castle Burn Zones (2023).** Under Rincon Consultants, Ms. Jovanovic performed intensive-level pedestrian surveys of the Castle Fire (2020) and Windy Fire (2021) burn zones within Sequoia National Forest.

**Southern California Edison (SCE) Subconsultant Agreement for Capital Projects (2021-2022).** South Environmental is a sub-consultant to Rincon Consultants, Inc. on SCE's Environmental Clearance contract and provides cultural resources services throughout SCE's service territory in Southern California. 2021-2022, Ms. Jovanovic performed a pedestrian survey along the SCE power lines near California City for the Cal City 115kV Upgrade project.

**Athos I & II Solar Project in Desert Center, California (2021).** Under Rincon Consultants, Ms. Jovanovic performed intensive-level pedestrian surveys and test pits of zones before construction, followed by archaeological monitoring and completion of cultural resources assessment reports in compliance with Section 106 of the NHPA.



## EDUCATION

B.A., Anthropology, minor in American Indian Studies, San Diego State University, 1995

## PROFESSIONAL AFFILIATIONS

Society for California Archaeology

## TRAININGS

AB 52 and CEQA Training, 2016

Cultural Side of NEPA Seminar, 2007

Traditional Cultural Properties Management Seminar, 2005

# Kevin Hunt

## PRINCIPAL ARCHAEOLOGIST

Kevin Hunt is a cultural resources management professional with more than 30 years of experience in California with specific expertise in the cultural resources requirements of the California Environmental Quality Act (CEQA), CEQA-Plus, National Historic Preservation Act (NHPA), and National Environmental Policy Act (NEPA). His responsibilities include the management and preparation of cultural resources studies, Native American scoping and consultation, and quality assurance and quality control for cultural resources documents. Mr. Hunt draws from his experience and training to ensure that all projects consider the full spectrum of cultural resources including archaeological, historic built environment, and tribal cultural resources. He is an expert in Native American consultation and has strong working relationships with California tribes and Native American consultants. Mr. Hunt coauthored and instructed a Native American monitor training course at the Cahuilla Reservation in 2005. Mr. Hunt also served on the City of Oceanside's Historic Preservation Advisory Commission from 2020-2023, when he moved out of the city.

In addition to experience with cultural resources, Mr. Hunt has managed multidisciplinary projects that included biological and paleontological resources services. Mr. Hunt has conducted paleontological monitoring and salvage and is approved by the County of Orange as a paleontologist and the City of San Diego as a paleontological monitor.

## EXPERTISE

- CEQA, CEQA-Plus, NEPA, and Sections 106 and 110 of the NHPA compliance documentation in consideration of impacts to historical, archaeological, and tribal cultural resources, and historic properties.
- Resource significance evaluations in consideration of National Register of Historic Places (NRHP), California Register of Historical Resources (CRHR), and local designation criteria.
- Design and execution of archaeological data recovery programs for mitigation of impacts/effects to significant archaeological resources.
- Management of cultural resources and multidisciplinary construction monitoring programs.
- Third party peer review of cultural resources technical studies and environmental document sections.

## RELEVANT PROJECT EXPERIENCE

**Wilshire Country Club Stream Restoration Project, Los Angeles, California (2024).** South Environmental was retained to complete a cultural resources study for this project that would restore a streambed within the golf course on the approximately 96-acre country club. The project requires federal permitting through the U.S. Army Corps of Engineers and is subject to Section 106 of the NHPA. Mr. Hunt served as the Principal Archaeologist and conducted the cultural resources records search, Sacred Lands File search, Native American outreach, and contributed the archaeological portions of the comprehensive cultural resources technical report that also included historic built environment survey and evaluation.

**Metro Link Union Station (Link US) Utilities Project, Los Angeles, California (2024-ongoing).** South Environmental is a subconsultant to HDR Engineering, Inc. providing cultural resources services to the Los Angeles County Metropolitan Transportation Authority (Metro). Metro is providing environmental oversight for this Los Angeles Department of Water and Power (LADWP) utilities replacement project located near the Little Tokyo neighborhood of Los Angeles. Mr. Hunt is South Environmental's Project Manager, responsible for coordination with HDR, our Native American monitoring subconsultant, and managing two archaeological monitors observing night construction.

**Southern California Edison (SCE) Subconsultant Agreement for Capital Projects (2021-ongoing).** South Environmental is a subconsultant to Rincon Consultants, Inc. on SCE's Environmental Clearance contract and provides cultural resources services throughout SCE's service territory in Southern California. Mr. Hunt provides senior oversight and review on archaeological and ethnographic studies in support of this program and participated in pedestrian survey of project alignments. Technical reports recently completed by South Environmental and reviewed by Mr. Hunt include the following:

- Ethnographic Literature Review Report for the Cal City 115 kV Upgrade Project in Kern and San Bernardino Counties

**Avalon Cabrillo Mole Phase II Project, Avalon, Santa Catalina Island, Los Angeles County, California (2020-2021).** During previous employment, Mr. Hunt served as Principal and Project Manager of the cultural resources study that included a cultural resource records search, Native American scoping, pedestrian survey, evaluation of historic environment resources, and preparation of a technical report. The study was subject to CEQA, NEPA, and Section 106 of the NHPA.

**Pebbly Beach Road Shoreline Improvements Project, Avalon, Santa Catalina Island, Los Angeles County, California (2021).** During previous employment, Mr. Hunt served as Principal and Project Manager of the cultural resources study that included a cultural resource records search, Native American scoping, pedestrian survey, evaluation of historic environment resources, and preparation of a technical report. The study was subject to CEQA, NEPA, and Section 106 of the NHPA.

**Five Corners Intersection Improvements Project, Avalon, Santa Catalina Island, Los Angeles County, California (2020).** During previous employment, Mr. Hunt served as Principal and Project Manager of the cultural resources study that included a cultural resource records search, Native American scoping, pedestrian survey, evaluation of historic environment resources, and preparation of a technical report. The study was subject to CEQA, NEPA, and Section 106 of the NHPA.



## EDUCATION

M.A., Anthropology,  
California State University,  
Los Angeles, 2013

B.A., Anthropology,  
California State University,  
Northridge, 2003

## PROFESSIONAL

### AFFILIATIONS

California Preservation  
Foundation

National Trust for Historic  
Preservation

## PROFESSIONAL

### CERTIFICATIONS

Registered Professional  
Archaeologist (2013)

# Samantha Murray, MA, RPA

## CULTURAL RESOURCES DIRECTOR

Samantha Murray is the cultural resources director and archaeological principal investigator at South Environmental with over 18 years' experience in all elements of cultural resources management, including project management, archaeology and architectural history studies, and significance evaluations in consideration of the National Register of Historic Places (NRHP), California Register of Historical Resources (CRHR), and local-level designation criteria. Ms. Murray has conducted thousands of Phase I archaeological studies, historical resource evaluations, and has developed detailed historic context statements for a multitude of property types and architectural styles. She has also provided expertise on numerous projects requiring conformance with the Secretary of the Interior's Standards for the Treatment of Historic Properties.

Ms. Murray meets the Secretary of the Interior's Professional Qualification Standards for both Archaeology and History. She is experienced managing multidisciplinary projects in the lines of private development, transportation, transmission and generation, federal land management, land development, and state and local government. She is an expert in preparation of cultural resources compliance documentation for projects that fall under the California Environmental Quality Act (CEQA), National Environmental Policy Act (NEPA), and Sections 106 and 110 of the National Historic Preservation Act (NHPA). Ms. Murray has also served as an expert witness in legal proceedings concerning historical resources under CEQA and local ordinance protection.

## EXPERTISE

- CEQA, NEPA, and Section 106 of the NHPA compliance documentation in consideration of impacts to historical, archaeological, and tribal cultural resources, and historic properties.
- Resource significance evaluations in consideration of NRHP, CRHR, and local designation criteria.
- Project design review for conformance with the Secretary of the Interior's Standards.
- Assistance with complex mitigation including HABS/HAER/HALS, salvage, and interpretive displays.
- Peer review.

## RELEVANT PROJECT EXPERIENCE

### **Metro Link Union Station (Link US) Utilities Project, City of Los Angeles, California (2024-ongoing).**

South Environmental is a subconsultant providing cultural resources services to the Los Angeles County Metropolitan Transportation Authority (Metro) for a utilities replacement project located near the Little Tokyo neighborhood of Los Angeles. South Environmental is providing archaeological monitoring, reporting, and historic built environment archival documentation services. Ms. Murray is the contract manager, responsible for coordination with HDR and all subconsultants.

### **Southern California Edison's San Francisquito Canyon Project on the Orion 16kV Located on Lands Managed by the United States Army Corps of Engineers, Los Angeles County, California (2023).**

South Environmental was retained to complete a cultural resources study in support of Southern California Edison's (SCE) Operations and Maintenance (O&M) project along the Orion 16kV circuit in unincorporated Los Angeles County, California on federal lands administered by the United States Army Corps of Engineers (USACE). The study was conducted to assess whether cultural resources are present in the APE and make recommendations for avoiding potentially adverse effects to historic properties resulting from project implementation. This report documents the methods and results of the cultural resources records search and survey conducted to assess any potential impacts to cultural resources that may occur as a result of the work.

**Hope Gardens Sequoia Building Project, Los Angeles County, California (2022).** South Environmental was retained by Union Rescue Mission to complete a cultural resources technical report for the Hope Gardens Sequoia Building Project located at 12249 Lopez Canyon Drive in unincorporated Los Angeles County, California, which proposes demolition of the existing building on the site and construction of a new facility. Ms. Murray authored the cultural resources technical report, serving as principal archaeologist and architectural historian. This study included a California Historical Resources Information Center (CHRIS) records search; a California Native American Heritage Commission (NAHC) Sacred Lands File search; an intensive pedestrian survey of the project site; building development and archival research; and recordation and evaluation of the Hope Gardens property for historical significance and integrity in consideration of CRHR and Los Angeles County designation criteria. As a result of the property significance evaluation, eight buildings on the property were found eligible as contributing resources to the newly identified Forester Haven Historic District.

**1501 Marlay Drive, City of Los Angeles, Los Angeles County, California (2022).** South Environmental was retained to prepare two documents: 1) a Tribal Cultural Resources (TCR) report, and 2) a Historic Resources Assessment (HRA) for a proposed new single-family development located at 1501 Marlay Drive in the City of Los Angeles. Ms. Murray served as both principal archaeologist and architectural historian. The TCR report included completion of a CHRIS records search, Native American outreach, archival/ethnographic research, and development of a cultural context to examine the presence of likelihood of TCRs within the project site. No TCRs were identified.

**Santa Clarita TTM 68203 Project, City of Santa Clarita, Los Angeles County, California (2021).** South Environmental was retained to complete a cultural resources technical report for the Tentative Tract Map (TTM) 68203 Project located in the City of Santa Clarita, Los Angeles County, California. Ms. Murray served as principal archaeologist and architectural historian and prepared the report which included the results of a CHRIS records search of the project site and a one-mile radius; a NAHC Sacred Lands File search and informational letters to local tribes; an intensive pedestrian survey of the project site; building development and archival research; and recordation and evaluation of the existing single-family residence (built 1966) for historical significance and integrity in consideration of CRHR and City of Santa Clarita designation criteria. No archaeological or historical resources were identified within the project site.

