

Appendix G

Noise Data



NOISE RECEPTOR & MEASUREMENT LOCATION MAP
The Commons at Aliso Viejo Project
Imagery via Google

1. Near Intersection of Aliso Creek Rd. and Enterprise

Summary

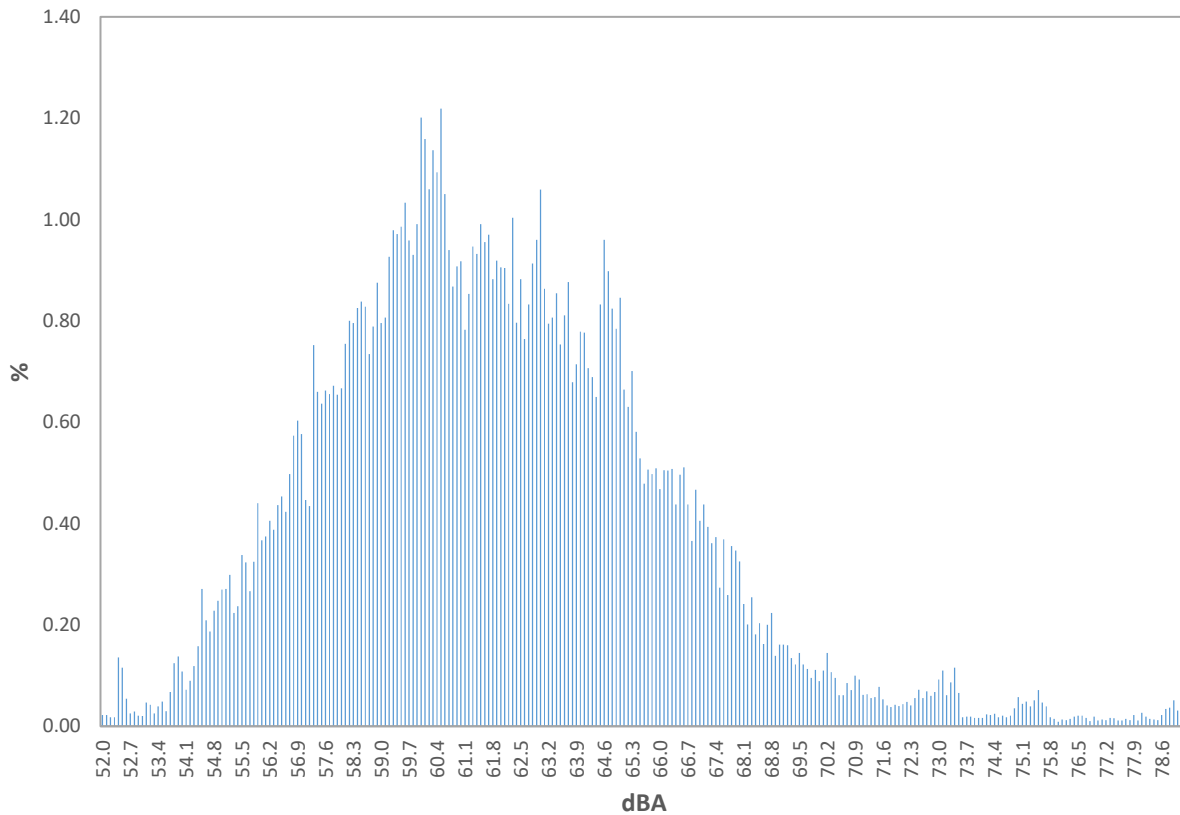
Date: Wednesday, October 26, 2022
Start Time: 2:26pm
End Time: 2:41pm
File Name: 831_Data.088
Device Model: Larson Davis Model 831
Weighting: A
Response: Slow

Results

Description	Value	Description	Value
L _{eq}	64.6dB	L ₁₀	67.2dB
L _{max}	79.2dB	L ₅₀	61.6dB
L _{min}	52.0dB	L ₉₀	56.9dB

LAS > 65.0 dBA (Exceedance Count/Duration): 45, 268.3s
LAS > 85.0 dBA (Exceedance Count/Duration): 0, 0s

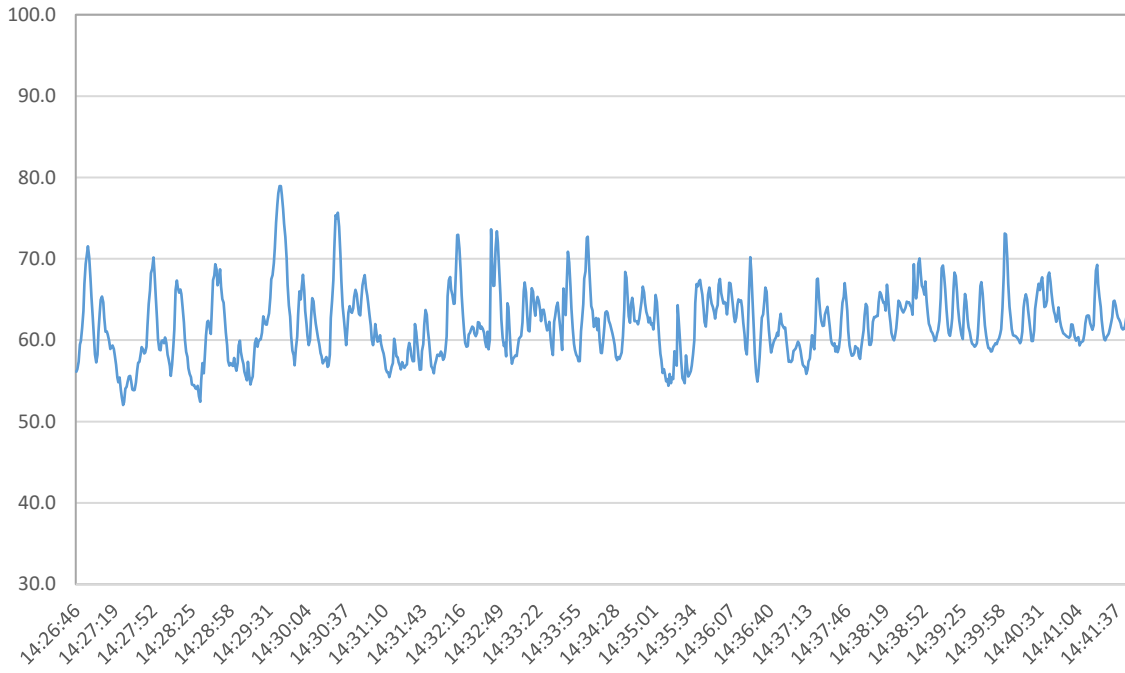
Statistics Chart



Statistics Table

dB	0.0	0.1	0.2	0.3	0.4	0.5	0.6	0.7	0.8	0.9	%
52.0	0.02	0.02	0.02	0.02	0.14	0.12	0.05	0.03	0.03	0.02	0.5
53.0	0.02	0.05	0.04	0.03	0.04	0.05	0.03	0.07	0.12	0.14	0.6
54.0	0.11	0.07	0.09	0.12	0.16	0.27	0.21	0.19	0.23	0.25	1.69
55.0	0.27	0.27	0.30	0.22	0.24	0.34	0.32	0.27	0.32	0.44	2.99
56.0	0.37	0.37	0.41	0.39	0.44	0.45	0.42	0.50	0.57	0.60	4.52
57.0	0.58	0.45	0.43	0.75	0.66	0.64	0.66	0.66	0.67	0.65	6.15
58.0	0.67	0.75	0.80	0.80	0.83	0.84	0.83	0.73	0.79	0.88	7.91
59.0	0.80	0.81	0.93	0.98	0.97	0.99	1.03	0.96	0.93	0.99	9.38
60.0	1.20	1.16	1.06	1.14	1.09	1.22	1.05	0.94	0.87	0.91	10.63
61.0	0.92	0.78	0.85	0.95	0.93	0.99	0.96	0.97	0.88	0.92	9.15
62.0	0.91	0.90	0.83	1.00	0.80	0.88	0.76	0.83	0.91	0.96	8.80
63.0	1.06	0.86	0.79	0.81	0.85	0.75	0.81	0.88	0.68	0.71	8.21
64.0	0.78	0.78	0.71	0.69	0.65	0.83	0.96	0.90	0.82	0.78	7.90
65.0	0.85	0.66	0.63	0.70	0.58	0.53	0.48	0.51	0.50	0.51	5.94
66.0	0.47	0.51	0.50	0.51	0.44	0.50	0.51	0.44	0.37	0.47	4.70
67.0	0.41	0.44	0.39	0.36	0.37	0.27	0.37	0.26	0.36	0.35	3.57
68.0	0.33	0.24	0.20	0.25	0.18	0.20	0.16	0.20	0.22	0.14	2.13
69.0	0.16	0.16	0.16	0.13	0.12	0.14	0.12	0.11	0.10	0.11	1.33
70.0	0.09	0.11	0.14	0.11	0.10	0.06	0.06	0.09	0.07	0.10	0.92
71.0	0.09	0.06	0.06	0.06	0.06	0.08	0.05	0.04	0.04	0.04	0.58
72.0	0.04	0.04	0.05	0.04	0.06	0.07	0.06	0.07	0.06	0.07	0.55
73.0	0.09	0.11	0.06	0.09	0.12	0.07	0.02	0.02	0.02	0.02	0.60
74.0	0.02	0.02	0.02	0.02	0.02	0.02	0.02	0.02	0.02	0.04	0.22
75.0	0.06	0.04	0.05	0.04	0.05	0.07	0.05	0.04	0.02	0.01	0.43
76.0	0.01	0.01	0.01	0.01	0.02	0.02	0.02	0.02	0.01	0.02	0.16
77.0	0.01	0.01	0.01	0.02	0.02	0.01	0.01	0.01	0.01	0.02	0.14
78.0	0.01	0.03	0.02	0.01	0.01	0.01	0.02	0.03	0.04	0.05	0.24
79.0	0.03	0.06	0.01	0.00	0.00	0.00	0.00	0.00	0.00	0.00	0.10

Logged Data Chart



2. Enterprise, Near Vantis Dr.

Summary

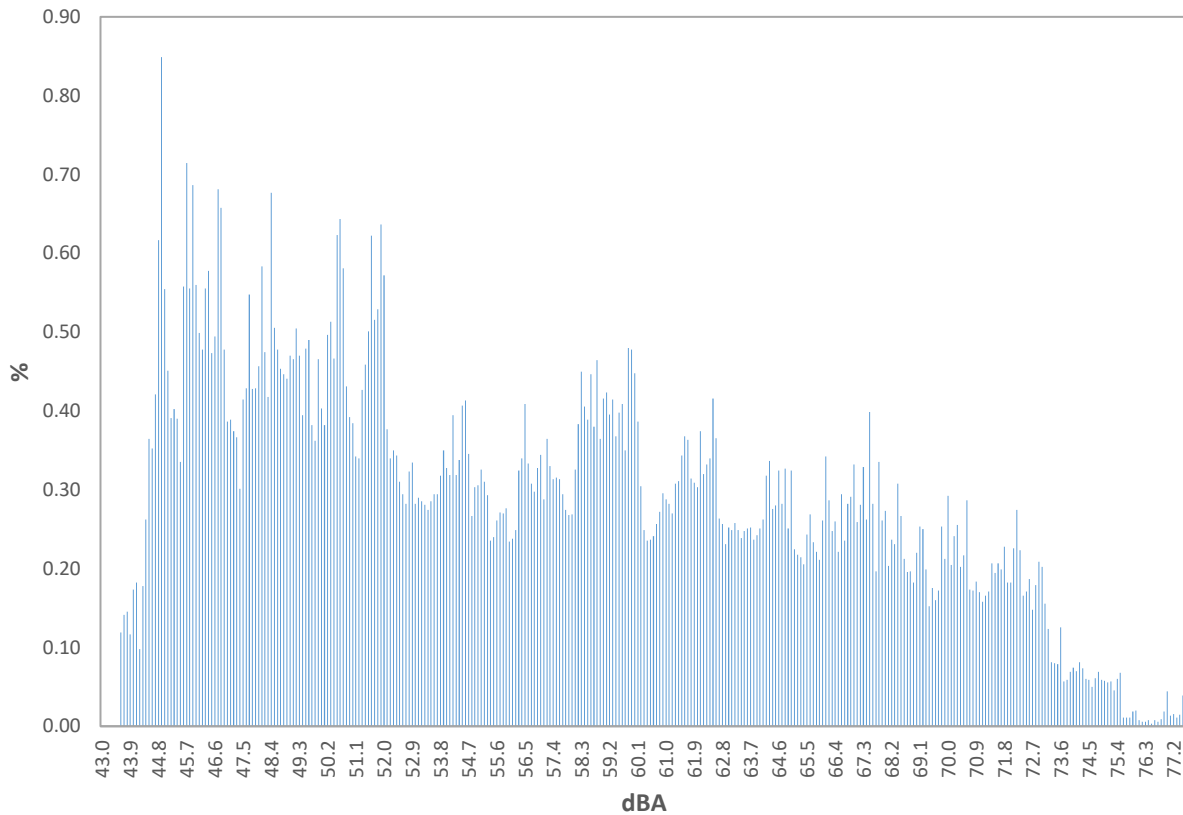
Date Wednesday, October 26, 2022
Start Time 3:06pm
End Time 3:21pm
File Name 831_Data.090
Device Model Larson Davis Model 831
Weighting A
Response Slow

Results

<u>Description</u>	<u>Value</u>	<u>Description</u>	<u>Value</u>
L _{eq}	64.3dB	L ₁₀	69.1dB
L _{max}	77.6dB	L ₅₀	55.8dB
L _{min}	43.6dB	L ₉₀	46.1dB

LAS > 65.0 dBA (Exceedance Count/Duration): 33, 213.0s
LAS > 85.0 dBA (Exceedance Count/Duration): 0, 0.0s

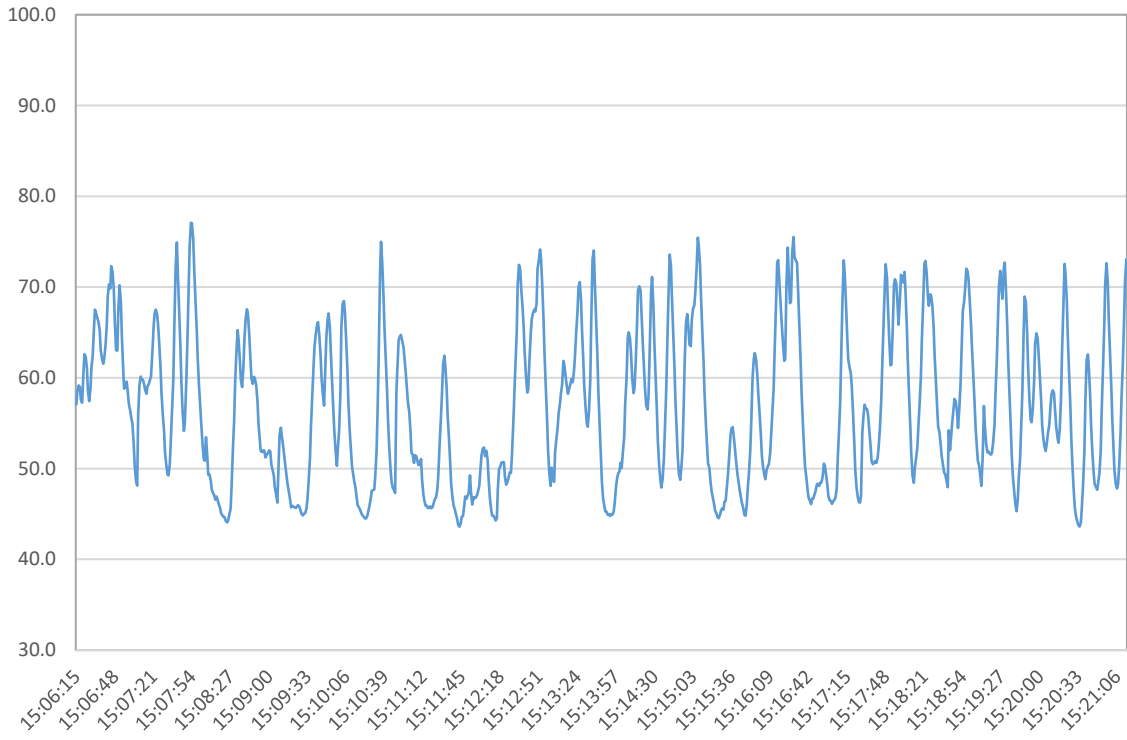
Statistics Chart



Statistics Table

dB	0.0	0.1	0.2	0.3	0.4	0.5	0.6	0.7	0.8	0.9	%
43.0	0.00	0.00	0.00	0.00	0.00	0.00	0.12	0.14	0.15	0.12	0.5
44.0	0.17	0.18	0.10	0.18	0.26	0.36	0.35	0.42	0.62	0.85	3.5
45.0	0.55	0.45	0.39	0.40	0.39	0.34	0.56	0.71	0.56	0.69	5.04
46.0	0.56	0.50	0.48	0.56	0.58	0.47	0.49	0.68	0.66	0.48	5.45
47.0	0.39	0.39	0.37	0.37	0.30	0.41	0.43	0.55	0.43	0.43	4.07
48.0	0.46	0.58	0.47	0.42	0.68	0.51	0.48	0.45	0.45	0.44	4.93
49.0	0.47	0.47	0.50	0.47	0.39	0.48	0.49	0.38	0.36	0.47	4.48
50.0	0.40	0.38	0.50	0.51	0.47	0.62	0.64	0.58	0.43	0.39	4.93
51.0	0.38	0.34	0.34	0.43	0.46	0.50	0.62	0.52	0.53	0.64	4.76
52.0	0.57	0.38	0.34	0.35	0.34	0.31	0.29	0.28	0.32	0.33	3.53
53.0	0.28	0.29	0.29	0.28	0.27	0.29	0.29	0.29	0.32	0.35	2.96
54.0	0.33	0.32	0.39	0.32	0.34	0.41	0.41	0.35	0.27	0.30	3.43
55.0	0.31	0.33	0.31	0.29	0.24	0.24	0.26	0.27	0.27	0.28	2.79
56.0	0.23	0.24	0.25	0.32	0.34	0.41	0.33	0.31	0.30	0.33	3.06
57.0	0.34	0.29	0.36	0.33	0.31	0.32	0.31	0.29	0.27	0.27	3.11
58.0	0.27	0.33	0.38	0.45	0.41	0.39	0.45	0.38	0.46	0.36	3.88
59.0	0.42	0.42	0.40	0.41	0.37	0.40	0.41	0.35	0.48	0.48	4.13
60.0	0.45	0.39	0.30	0.25	0.24	0.24	0.24	0.26	0.27	0.30	2.93
61.0	0.29	0.28	0.27	0.31	0.31	0.34	0.37	0.36	0.31	0.31	3.16
62.0	0.30	0.37	0.32	0.33	0.34	0.42	0.37	0.26	0.26	0.23	3.20
63.0	0.25	0.25	0.26	0.25	0.24	0.25	0.25	0.25	0.24	0.24	2.48
64.0	0.25	0.26	0.32	0.34	0.28	0.28	0.32	0.28	0.33	0.25	2.91
65.0	0.32	0.22	0.22	0.21	0.21	0.24	0.27	0.23	0.22	0.21	2.36
66.0	0.26	0.34	0.29	0.25	0.26	0.22	0.29	0.24	0.28	0.29	2.72
67.0	0.33	0.26	0.28	0.33	0.26	0.40	0.28	0.20	0.34	0.26	2.94
68.0	0.27	0.20	0.24	0.23	0.31	0.27	0.21	0.20	0.20	0.18	2.31
69.0	0.22	0.25	0.25	0.20	0.15	0.18	0.16	0.17	0.25	0.21	2.05
70.0	0.29	0.20	0.24	0.26	0.20	0.22	0.29	0.17	0.17	0.18	2.23
71.0	0.17	0.16	0.17	0.17	0.21	0.19	0.21	0.20	0.23	0.18	1.88
72.0	0.18	0.23	0.27	0.22	0.17	0.17	0.19	0.15	0.18	0.21	1.96
73.0	0.20	0.16	0.12	0.08	0.08	0.08	0.13	0.06	0.06	0.07	1.03
74.0	0.07	0.07	0.08	0.07	0.06	0.06	0.05	0.06	0.07	0.06	0.66
75.0	0.06	0.06	0.06	0.05	0.06	0.07	0.01	0.01	0.01	0.02	0.40
76.0	0.02	0.01	0.01	0.01	0.01	0.00	0.01	0.01	0.01	0.02	0.09
77.0	0.04	0.01	0.02	0.01	0.01	0.04	0.00	0.00	0.00	0.00	0.14

Logged Data Chart



3. Vantis Residences – Facing Project Site

Summary

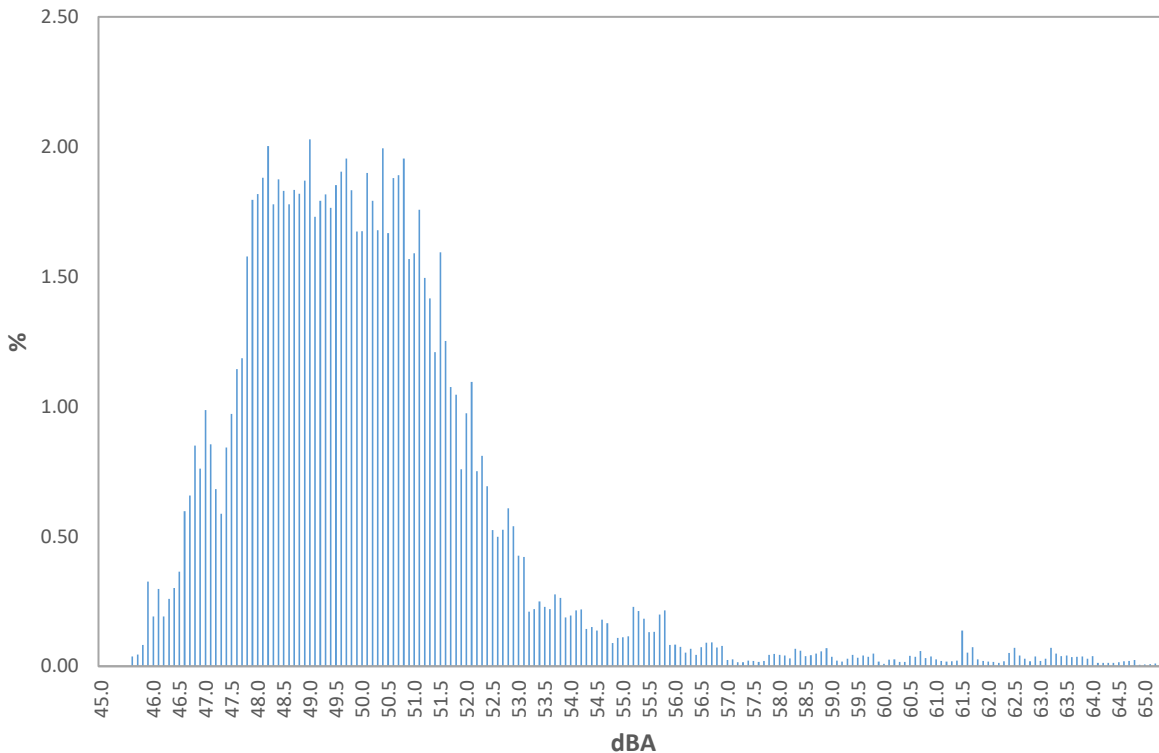
Date Thursday, March 21, 2024
Start Time 3:00pm
End Time 3:15pm
File Name 831_Data.122
Device Model Larson Davis Model 831
Weighting A
Response Slow

Results

<u>Description</u>	<u>Value</u>	<u>Description</u>	<u>Value</u>
L _{eq}	51.6dB	L ₁₀	52.8dB
L _{max}	65.4dB	L ₅₀	49.8dB
L _{min}	45.6dB	L ₉₀	47.6dB

LAS > 65.0 dBA (Exceedance Count/Duration): 1, 2.9s
LAS > 85.0 dBA (Exceedance Count/Duration): 0, 0s

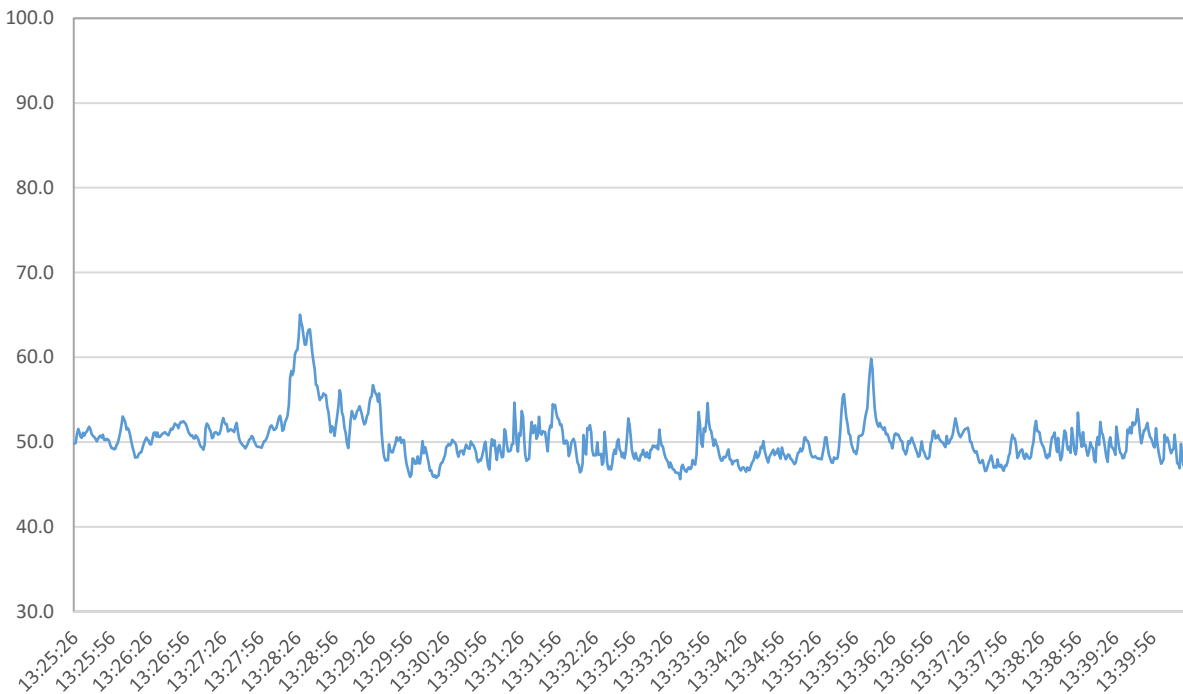
Statistics Chart



Statistics Table

dB	0.0	0.1	0.2	0.3	0.4	0.5	0.6	0.7	0.8	0.9	%
45.0	0.00	0.00	0.00	0.00	0.00	0.00	0.04	0.05	0.08	0.33	0.5
46.0	0.19	0.30	0.19	0.26	0.30	0.36	0.60	0.66	0.85	0.76	4.5
47.0	0.99	0.85	0.68	0.59	0.84	0.97	1.14	1.19	1.58	1.80	10.63
48.0	1.82	1.88	2.00	1.78	1.87	1.83	1.78	1.83	1.82	1.87	18.48
49.0	2.03	1.73	1.79	1.82	1.76	1.85	1.90	1.95	1.83	1.67	18.35
50.0	1.67	1.90	1.79	1.68	1.99	1.67	1.88	1.89	1.95	1.57	18.00
51.0	1.59	1.76	1.49	1.42	1.21	1.59	1.25	1.07	1.05	0.76	13.19
52.0	0.97	1.09	0.75	0.81	0.69	0.52	0.50	0.53	0.61	0.54	7.02
53.0	0.43	0.42	0.21	0.22	0.25	0.23	0.22	0.28	0.26	0.19	2.70
54.0	0.20	0.22	0.22	0.14	0.15	0.14	0.18	0.17	0.09	0.11	1.60
55.0	0.11	0.12	0.23	0.21	0.18	0.13	0.13	0.20	0.21	0.08	1.61
56.0	0.08	0.07	0.05	0.07	0.04	0.07	0.09	0.09	0.07	0.08	0.73
57.0	0.02	0.03	0.02	0.02	0.02	0.02	0.02	0.02	0.04	0.05	0.25
58.0	0.04	0.04	0.03	0.07	0.06	0.04	0.04	0.05	0.06	0.07	0.50
59.0	0.04	0.02	0.02	0.03	0.04	0.03	0.04	0.04	0.05	0.02	0.33
60.0	0.01	0.03	0.03	0.02	0.02	0.04	0.04	0.06	0.03	0.04	0.30
61.0	0.03	0.02	0.02	0.02	0.02	0.14	0.05	0.07	0.03	0.02	0.41
62.0	0.02	0.02	0.01	0.02	0.05	0.07	0.04	0.04	0.02	0.04	0.32
63.0	0.02	0.03	0.07	0.05	0.04	0.04	0.04	0.04	0.04	0.03	0.39
64.0	0.04	0.01	0.01	0.01	0.01	0.02	0.02	0.02	0.02	0.01	0.18
65.0	0.01	0.01	0.01	0.01	0.02	0.00	0.00	0.00	0.00	0.00	0.06

Logged Data Chart



4. Near 101 Summit Office Park

Summary

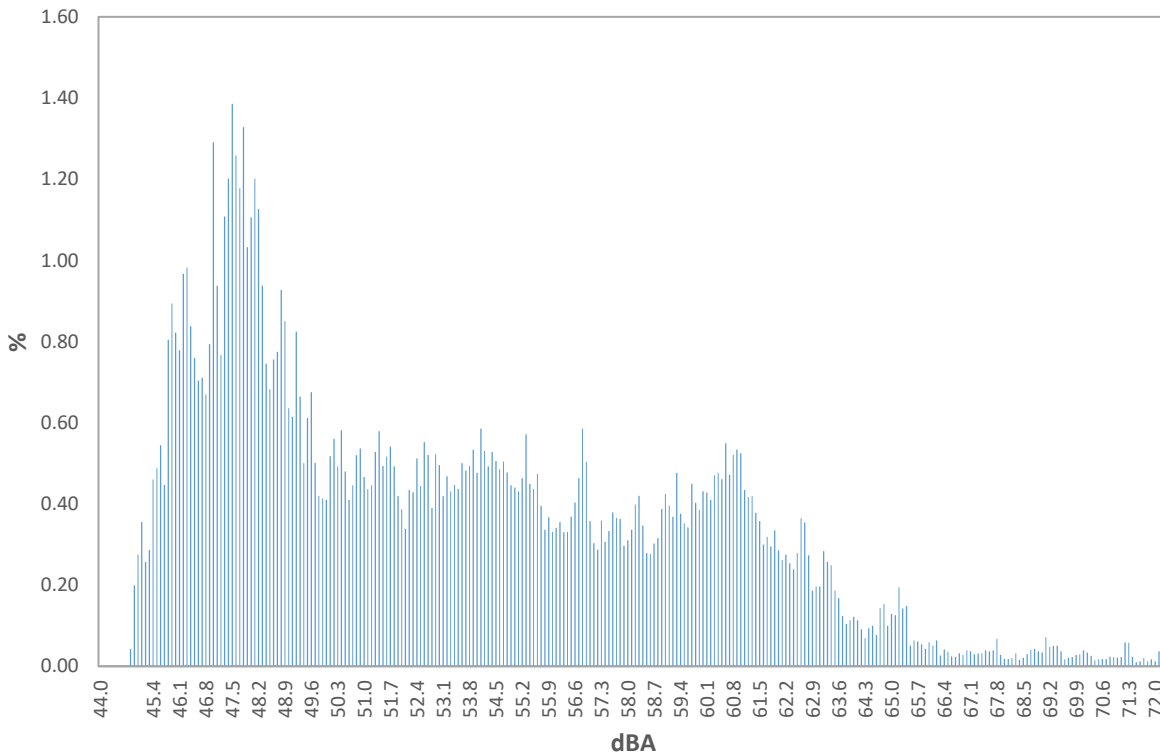
Date: Thursday, March 21, 2024
Start Time: 3:30pm
End Time: 3:45pm
File Name: 831_Data.123
Device Model: Larson Davis Model 831
Weighting: A
Response: Slow

Results

Description	Value	Description	Value
L _{eq}	57.8dB	L ₁₀	61.5dB
L _{max}	72.3dB	L ₅₀	52.1dB
L _{min}	44.8dB	L ₉₀	46.5dB

LAS > 65.0 dBA (Exceedance Count/Duration): 5, 34.6s
LAS > 85.0 dBA (Exceedance Count/Duration): 0, 0s

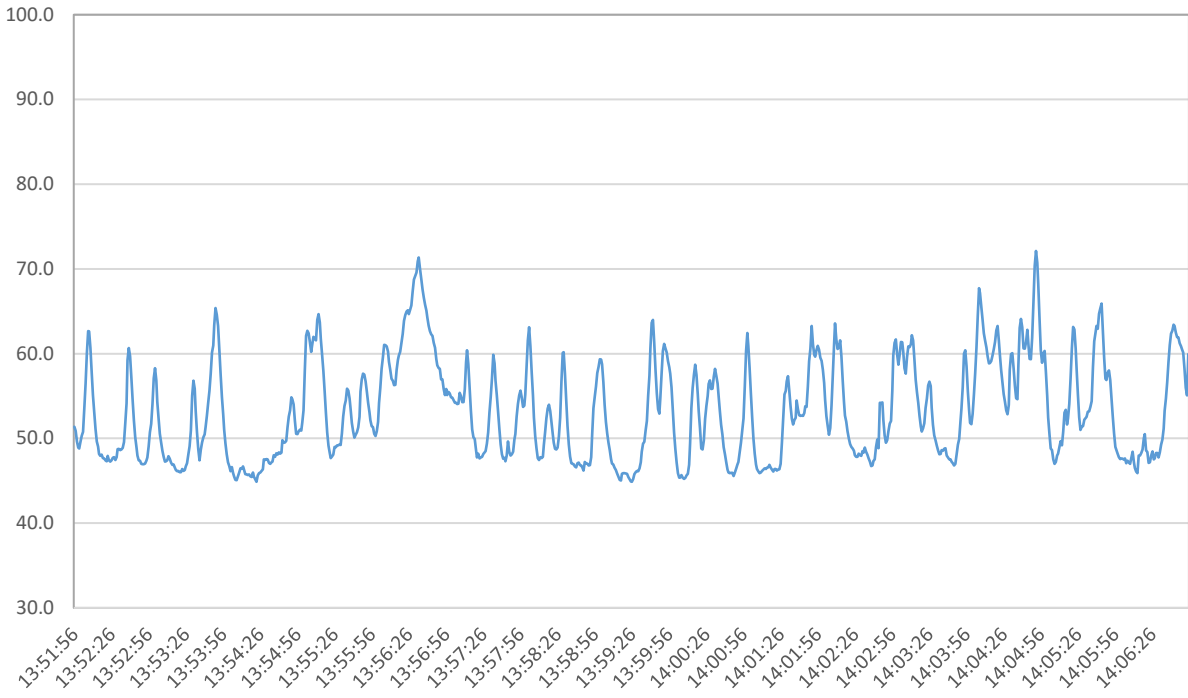
Statistics Chart



Statistics Table

dB	0.0	0.1	0.2	0.3	0.4	0.5	0.6	0.7	0.8	0.9	%
44.0	0.00	0.00	0.00	0.00	0.00	0.00	0.00	0.00	0.04	0.20	0.2
45.0	0.27	0.36	0.26	0.29	0.46	0.49	0.54	0.45	0.80	0.89	4.8
46.0	0.82	0.78	0.97	0.98	0.84	0.76	0.70	0.71	0.67	0.79	8.03
47.0	1.29	0.94	0.77	1.11	1.20	1.39	1.26	1.18	1.33	1.03	11.49
48.0	1.11	1.20	1.13	0.94	0.75	0.68	0.76	0.77	0.93	0.85	9.11
49.0	0.64	0.61	0.82	0.66	0.50	0.61	0.68	0.50	0.42	0.41	5.86
50.0	0.41	0.52	0.56	0.49	0.58	0.48	0.41	0.45	0.52	0.54	4.95
51.0	0.47	0.44	0.45	0.53	0.58	0.49	0.52	0.54	0.49	0.42	4.92
52.0	0.39	0.34	0.43	0.43	0.51	0.44	0.55	0.52	0.39	0.52	4.53
53.0	0.50	0.42	0.47	0.43	0.45	0.44	0.50	0.48	0.49	0.53	4.71
54.0	0.48	0.59	0.53	0.49	0.53	0.51	0.49	0.50	0.48	0.45	5.03
55.0	0.44	0.43	0.46	0.57	0.45	0.44	0.47	0.40	0.34	0.37	4.36
56.0	0.33	0.34	0.36	0.33	0.33	0.37	0.40	0.46	0.59	0.50	4.01
57.0	0.36	0.30	0.29	0.36	0.31	0.33	0.38	0.37	0.36	0.30	3.35
58.0	0.31	0.34	0.40	0.42	0.35	0.28	0.28	0.30	0.32	0.39	3.37
59.0	0.42	0.40	0.37	0.48	0.38	0.35	0.34	0.45	0.40	0.39	3.97
60.0	0.43	0.43	0.41	0.47	0.48	0.46	0.55	0.47	0.52	0.53	4.75
61.0	0.52	0.43	0.42	0.42	0.38	0.36	0.30	0.32	0.30	0.33	3.78
62.0	0.29	0.26	0.27	0.25	0.24	0.28	0.36	0.35	0.27	0.19	2.77
63.0	0.20	0.20	0.28	0.26	0.25	0.19	0.17	0.12	0.10	0.11	1.88
64.0	0.12	0.11	0.09	0.07	0.09	0.10	0.08	0.14	0.15	0.10	1.06
65.0	0.13	0.13	0.19	0.14	0.15	0.05	0.06	0.06	0.05	0.04	1.01
66.0	0.06	0.05	0.06	0.03	0.04	0.04	0.02	0.02	0.03	0.03	0.38
67.0	0.04	0.04	0.03	0.03	0.03	0.04	0.04	0.04	0.07	0.03	0.38
68.0	0.02	0.02	0.02	0.03	0.02	0.02	0.03	0.04	0.04	0.04	0.28
69.0	0.03	0.07	0.05	0.05	0.05	0.04	0.02	0.02	0.02	0.03	0.38
70.0	0.03	0.04	0.03	0.03	0.01	0.02	0.02	0.02	0.02	0.02	0.24
71.0	0.02	0.02	0.06	0.06	0.02	0.01	0.01	0.02	0.01	0.02	0.25
72.0	0.01	0.04	0.02	0.02	0.00	0.00	0.00	0.00	0.00	0.00	0.09

Logged Data Chart



5. Nearby Restaurant Outdoor Seating

Summary

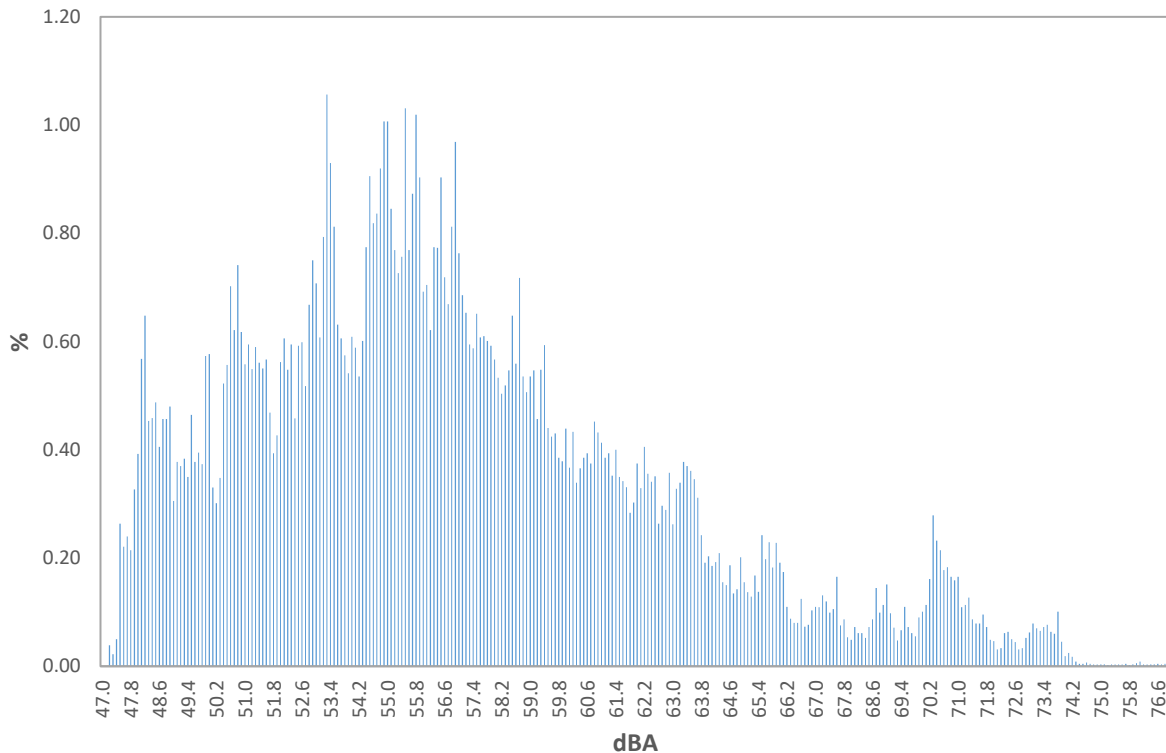
Date: Thursday, March 21, 2024
Start Time: 4:04pm
End Time: 4:19pm
File Name: 831_Data.124
Device Model: Larson Davis Model 831
Weighting: A
Response: Slow

Results

Description	Value	Description	Value
L _{eq}	61.6dB	L ₁₀	64.8dB
L _{max}	76.9dB	L ₅₀	55.9dB
L _{min}	47.2dB	L ₉₀	49.9dB

LAS > 65.0 dBA (Exceedance Count/Duration): 13, 101.8s
LAS > 85.0 dBA (Exceedance Count/Duration): 0, 0s

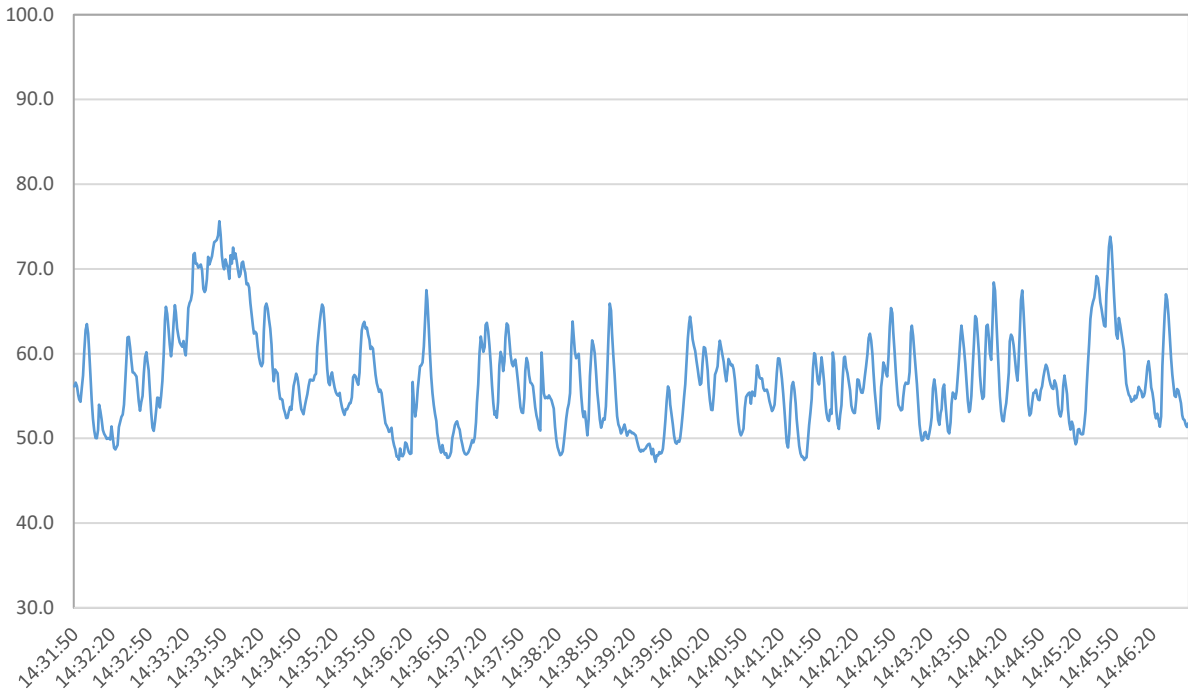
Statistics Chart



Statistics Table

dB	0.0	0.1	0.2	0.3	0.4	0.5	0.6	0.7	0.8	0.9	%
47.0	0.00	0.00	0.04	0.02	0.05	0.26	0.22	0.24	0.21	0.33	1.4
48.0	0.39	0.57	0.65	0.45	0.46	0.49	0.41	0.46	0.46	0.48	4.8
49.0	0.31	0.38	0.37	0.38	0.35	0.46	0.38	0.39	0.37	0.57	3.97
50.0	0.58	0.33	0.30	0.35	0.52	0.56	0.70	0.62	0.74	0.62	5.32
51.0	0.56	0.59	0.55	0.59	0.56	0.55	0.57	0.47	0.39	0.43	5.26
52.0	0.56	0.61	0.55	0.59	0.46	0.59	0.60	0.52	0.67	0.75	5.89
53.0	0.71	0.61	0.79	1.06	0.93	0.81	0.63	0.61	0.57	0.54	7.26
54.0	0.61	0.59	0.54	0.60	0.77	0.91	0.82	0.84	0.92	1.01	7.60
55.0	1.01	0.85	0.77	0.73	0.76	1.03	0.77	0.87	1.02	0.90	8.70
56.0	0.69	0.70	0.62	0.77	0.77	0.90	0.72	0.67	0.81	0.97	7.64
57.0	0.76	0.69	0.65	0.59	0.59	0.65	0.61	0.61	0.60	0.59	6.35
58.0	0.57	0.53	0.50	0.52	0.55	0.65	0.56	0.72	0.54	0.51	5.64
59.0	0.54	0.55	0.46	0.55	0.59	0.44	0.42	0.43	0.39	0.38	4.74
60.0	0.44	0.37	0.43	0.34	0.37	0.39	0.39	0.37	0.45	0.43	3.98
61.0	0.41	0.39	0.39	0.35	0.40	0.35	0.34	0.33	0.28	0.30	3.55
62.0	0.37	0.33	0.41	0.36	0.34	0.35	0.26	0.30	0.29	0.36	3.36
63.0	0.26	0.33	0.34	0.38	0.37	0.36	0.35	0.31	0.24	0.19	3.13
64.0	0.20	0.19	0.19	0.21	0.16	0.15	0.19	0.13	0.14	0.20	1.76
65.0	0.16	0.14	0.13	0.17	0.14	0.24	0.20	0.23	0.18	0.23	1.81
66.0	0.19	0.17	0.11	0.09	0.08	0.08	0.12	0.07	0.08	0.10	1.10
67.0	0.11	0.11	0.13	0.12	0.10	0.11	0.17	0.08	0.09	0.05	1.06
68.0	0.05	0.07	0.06	0.06	0.05	0.07	0.09	0.14	0.10	0.11	0.81
69.0	0.15	0.10	0.07	0.05	0.07	0.11	0.07	0.06	0.06	0.09	0.82
70.0	0.10	0.11	0.16	0.28	0.23	0.21	0.18	0.18	0.17	0.16	1.79
71.0	0.17	0.11	0.11	0.13	0.09	0.08	0.08	0.10	0.07	0.05	0.98
72.0	0.05	0.03	0.03	0.06	0.06	0.05	0.04	0.03	0.03	0.05	0.45
73.0	0.06	0.08	0.07	0.07	0.07	0.08	0.06	0.06	0.10	0.05	0.70
74.0	0.02	0.02	0.02	0.01	0.00	0.00	0.01	0.00	0.00	0.00	0.10
75.0	0.00	0.00	0.00	0.00	0.00	0.00	0.00	0.00	0.00	0.00	0.03
76.0	0.01	0.01	0.00	0.00	0.00	0.00	0.00	0.00	0.00	0.01	0.05

Logged Data Chart



6. Intersection of Enterprise and Town Center (Midday)

Noise Report

Summary

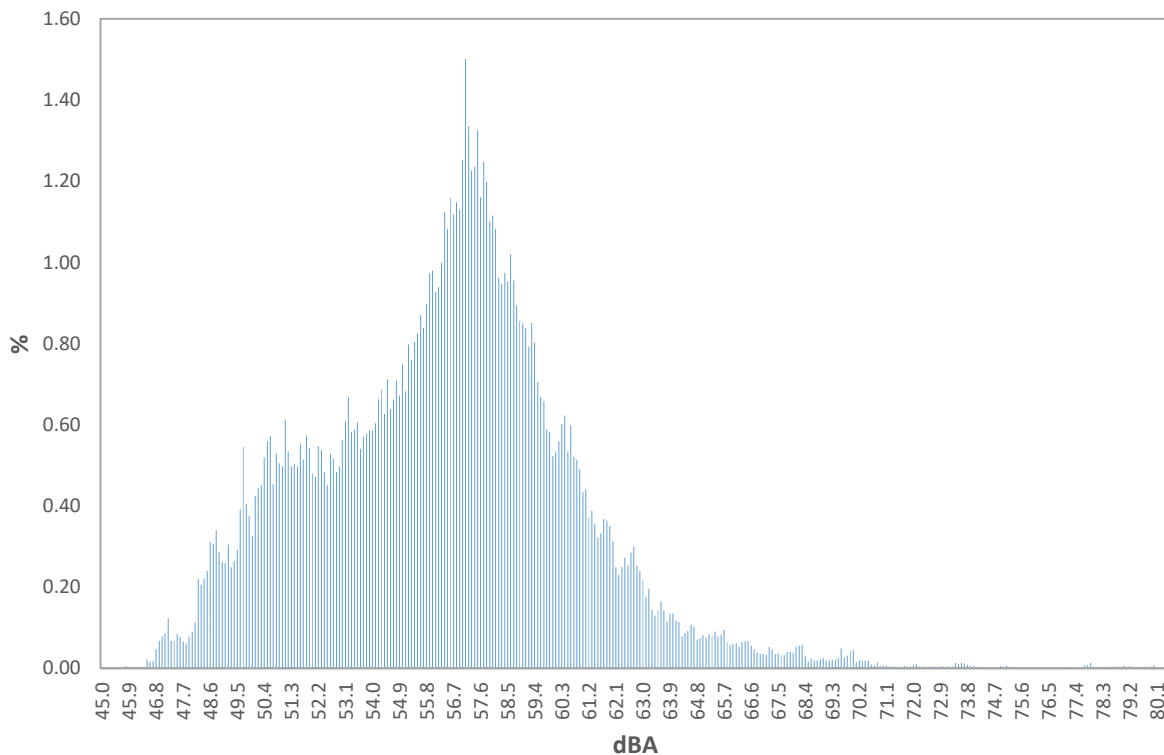
Date Thursday, March 21, 2024
Start Time 1:47pm
End Time 2:47pm
File Name 831_Data.121
Device Model Larson Davis Model 831
Weighting A
Response Slow

Results

<u>Description</u>	<u>Value</u>	<u>Description</u>	<u>Value</u>
L _{eq}	59.3dB	L ₁₀	61.4dB
L _{max}	80.5dB	L ₅₀	56.7dB
L _{min}	45.8dB	L ₉₀	50.7dB

LAS > 65.0 dBA (Exceedance Count/Duration): 37, 141.8s
LAS > 85.0 dBA (Exceedance Count/Duration): 0, 0s

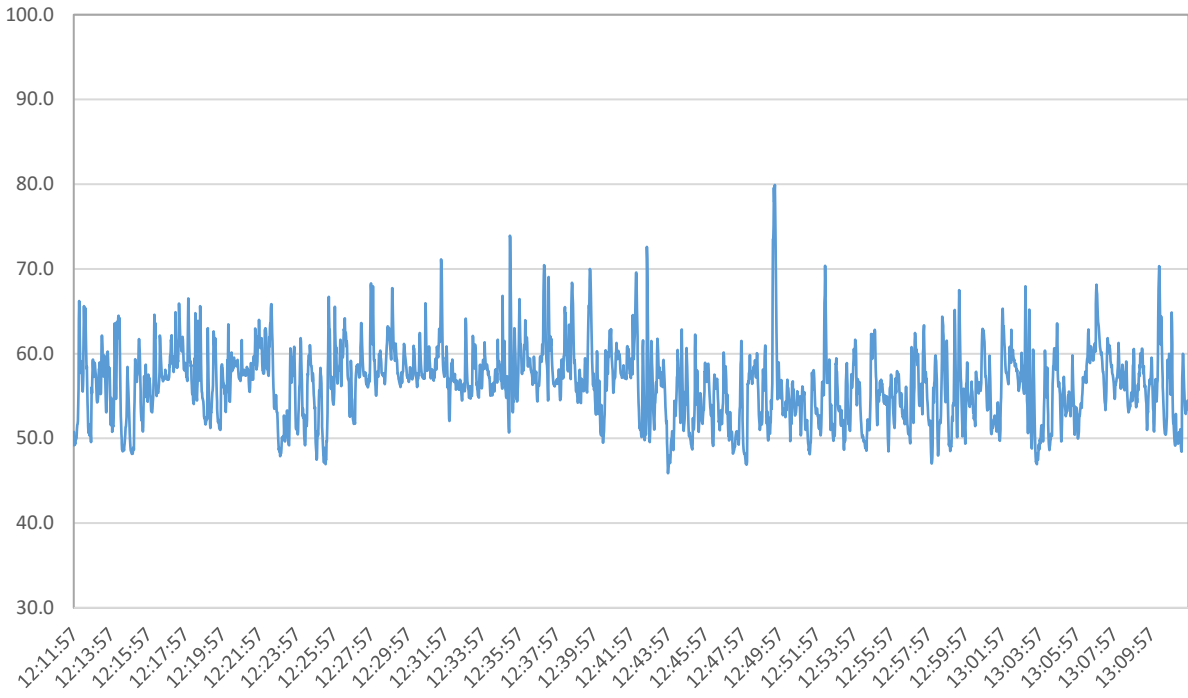
Statistics Chart



Statistics Table

dB	0.0	0.1	0.2	0.3	0.4	0.5	0.6	0.7	0.8	0.9	%
45.0	0.00	0.00	0.00	0.00	0.00	0.00	0.00	0.00	0.01	0.00	0.0
46.0	0.00	0.00	0.00	0.00	0.00	0.02	0.02	0.02	0.05	0.07	0.2
47.0	0.08	0.09	0.12	0.07	0.07	0.08	0.08	0.07	0.06	0.08	0.79
48.0	0.09	0.11	0.22	0.21	0.22	0.24	0.31	0.31	0.34	0.29	2.33
49.0	0.26	0.26	0.30	0.25	0.26	0.29	0.39	0.55	0.41	0.37	3.35
50.0	0.33	0.42	0.44	0.45	0.52	0.56	0.57	0.45	0.53	0.51	4.78
51.0	0.50	0.61	0.53	0.50	0.50	0.50	0.55	0.51	0.57	0.54	5.33
52.0	0.48	0.47	0.55	0.54	0.48	0.45	0.53	0.52	0.48	0.50	5.00
53.0	0.56	0.61	0.67	0.58	0.59	0.61	0.54	0.57	0.58	0.59	5.89
54.0	0.59	0.60	0.66	0.69	0.63	0.71	0.64	0.66	0.71	0.67	6.56
55.0	0.75	0.68	0.80	0.76	0.80	0.83	0.87	0.84	0.90	0.97	8.20
56.0	0.98	0.93	0.94	1.00	1.12	1.08	1.16	1.12	1.15	1.13	10.61
57.0	1.25	1.50	1.34	1.23	1.24	1.33	1.16	1.25	1.20	1.10	12.58
58.0	1.12	1.08	0.96	0.95	0.97	0.95	1.02	0.96	0.89	0.86	9.76
59.0	0.85	0.84	0.79	0.85	0.80	0.71	0.67	0.66	0.59	0.58	7.34
60.0	0.52	0.53	0.56	0.60	0.62	0.53	0.60	0.52	0.51	0.49	5.50
61.0	0.43	0.44	0.37	0.39	0.36	0.32	0.33	0.37	0.36	0.35	3.73
62.0	0.31	0.25	0.23	0.25	0.27	0.25	0.29	0.30	0.25	0.24	2.64
63.0	0.22	0.18	0.20	0.14	0.13	0.14	0.17	0.14	0.11	0.13	1.56
64.0	0.13	0.12	0.11	0.08	0.09	0.09	0.11	0.10	0.07	0.07	0.98
65.0	0.08	0.08	0.08	0.08	0.09	0.08	0.08	0.09	0.06	0.06	0.79
66.0	0.06	0.06	0.05	0.06	0.07	0.07	0.06	0.05	0.04	0.04	0.55
67.0	0.04	0.03	0.05	0.05	0.03	0.04	0.03	0.03	0.04	0.04	0.38
68.0	0.04	0.05	0.06	0.06	0.03	0.02	0.02	0.02	0.02	0.02	0.33
69.0	0.03	0.02	0.02	0.02	0.02	0.02	0.03	0.05	0.03	0.03	0.28
70.0	0.05	0.02	0.02	0.02	0.02	0.02	0.01	0.01	0.01	0.01	0.17
71.0	0.01	0.01	0.00	0.00	0.00	0.00	0.00	0.01	0.00	0.00	0.05
72.0	0.01	0.01	0.01	0.00	0.00	0.00	0.00	0.00	0.00	0.00	0.05
73.0	0.00	0.00	0.01	0.00	0.01	0.01	0.01	0.01	0.01	0.01	0.08
74.0	0.01	0.00	0.00	0.00	0.00	0.00	0.00	0.00	0.00	0.01	0.03
75.0	0.00	0.01	0.00	0.00	0.00	0.00	0.00	0.00	0.00	0.00	0.03
76.0	0.00	0.00	0.00	0.00	0.00	0.00	0.00	0.00	0.00	0.00	0.02
77.0	0.00	0.00	0.00	0.00	0.00	0.00	0.00	0.01	0.01	0.01	0.04
78.0	0.00	0.00	0.00	0.00	0.00	0.00	0.00	0.00	0.00	0.00	0.03
79.0	0.01	0.00	0.01	0.00	0.00	0.00	0.00	0.00	0.00	0.00	0.04
80.0	0.01	0.00	0.00	0.00	0.00	0.01	0.00	0.00	0.00	0.00	0.02

Logged Data Chart



7. Intersection of Enterprise and Town Center (Peak Hour) *Noise Report*

Summary

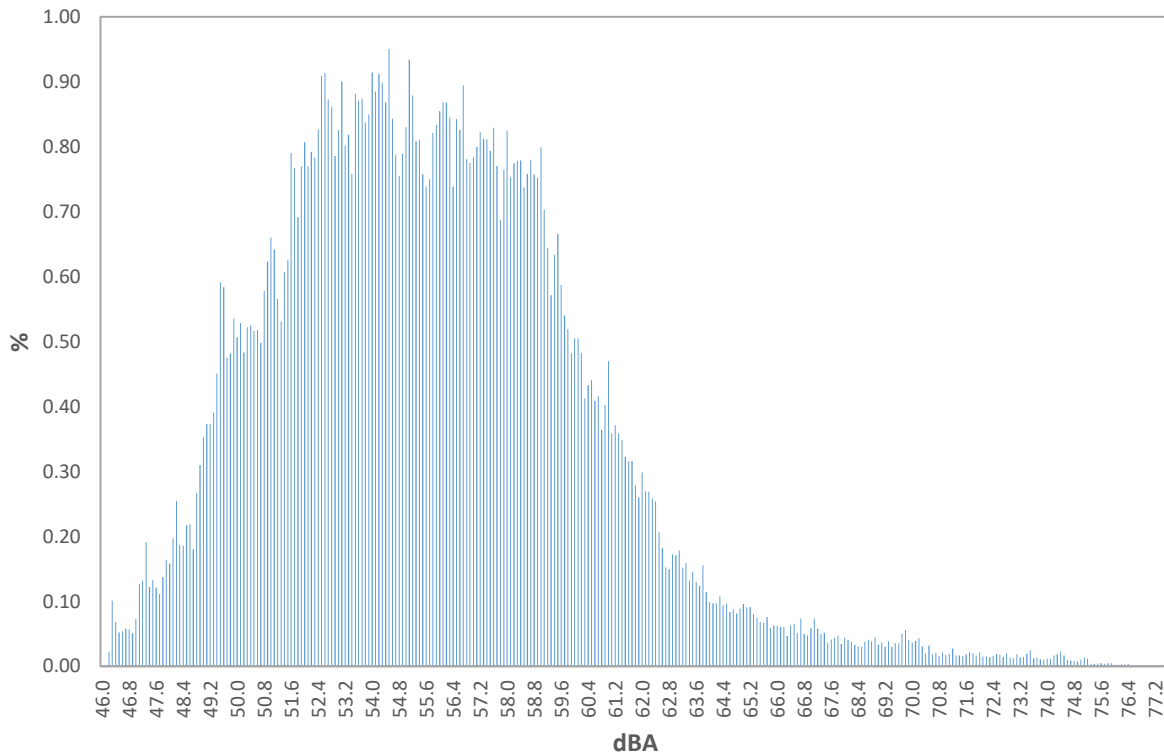
Date: Thursday, March 21, 2024
Start Time: 4:21pm
End Time: 5:21pm
File Name: 831_Data.125
Device Model: Larson Davis Model 831
Weighting: A
Response: Slow

Results

<u>Description</u>	<u>Value</u>	<u>Description</u>	<u>Value</u>
L _{eq}	59.2dB	L ₁₀	61.4dB
L _{max}	77.6dB	L ₅₀	55.4dB
L _{min}	46.1dB	L ₉₀	50.2dB

LAS > 65.0 dBA (Exceedance Count/Duration): 33, 163.3s
LAS > 85.0 dBA (Exceedance Count/Duration): 0, 0s

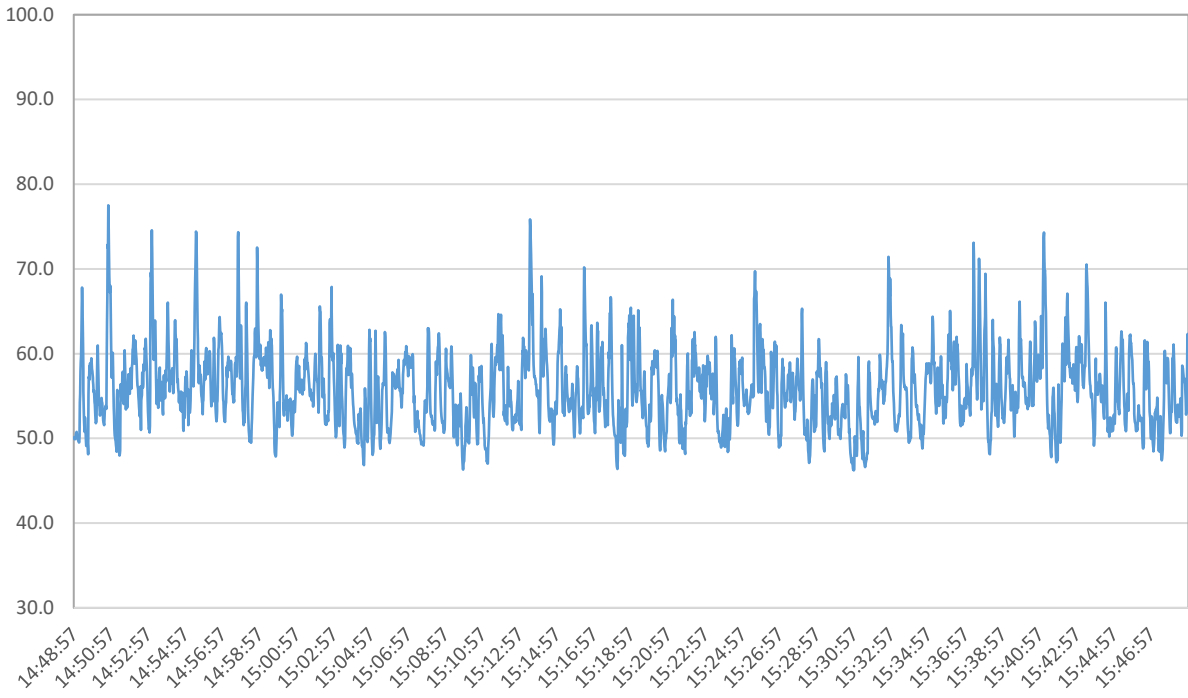
Statistics Chart



Statistics Table

dB	0.0	0.1	0.2	0.3	0.4	0.5	0.6	0.7	0.8	0.9	%
46.0	0.00	0.00	0.02	0.10	0.07	0.05	0.05	0.06	0.06	0.05	0.5
47.0	0.07	0.13	0.13	0.19	0.12	0.13	0.12	0.11	0.14	0.16	1.3
48.0	0.16	0.20	0.25	0.19	0.19	0.22	0.22	0.18	0.27	0.31	2.17
49.0	0.35	0.37	0.37	0.39	0.45	0.59	0.58	0.48	0.48	0.54	4.61
50.0	0.51	0.53	0.48	0.52	0.53	0.52	0.52	0.50	0.58	0.62	5.30
51.0	0.66	0.64	0.57	0.53	0.61	0.63	0.79	0.77	0.69	0.77	6.65
52.0	0.81	0.77	0.79	0.78	0.83	0.91	0.91	0.87	0.86	0.79	8.32
53.0	0.83	0.90	0.80	0.82	0.76	0.88	0.87	0.87	0.84	0.85	8.42
54.0	0.91	0.89	0.91	0.90	0.87	0.95	0.84	0.79	0.75	0.79	8.60
55.0	0.83	0.93	0.88	0.81	0.81	0.76	0.74	0.75	0.82	0.83	8.16
56.0	0.85	0.87	0.87	0.85	0.74	0.84	0.83	0.89	0.78	0.77	8.29
57.0	0.78	0.80	0.82	0.81	0.81	0.79	0.83	0.77	0.69	0.76	7.87
58.0	0.83	0.75	0.77	0.78	0.78	0.74	0.76	0.78	0.76	0.75	7.69
59.0	0.80	0.70	0.64	0.57	0.63	0.67	0.59	0.54	0.52	0.48	6.15
60.0	0.51	0.50	0.48	0.41	0.43	0.44	0.41	0.42	0.36	0.40	4.37
61.0	0.47	0.36	0.37	0.36	0.35	0.32	0.32	0.32	0.28	0.26	3.40
62.0	0.30	0.27	0.27	0.26	0.25	0.21	0.18	0.15	0.15	0.17	2.21
63.0	0.17	0.18	0.15	0.16	0.13	0.15	0.13	0.12	0.16	0.11	1.46
64.0	0.10	0.10	0.10	0.11	0.09	0.10	0.08	0.09	0.08	0.09	0.93
65.0	0.10	0.09	0.09	0.08	0.07	0.07	0.07	0.08	0.06	0.06	0.76
66.0	0.06	0.06	0.06	0.05	0.06	0.07	0.05	0.07	0.05	0.05	0.58
67.0	0.06	0.07	0.06	0.05	0.05	0.04	0.04	0.04	0.05	0.03	0.49
68.0	0.04	0.04	0.04	0.03	0.03	0.03	0.04	0.04	0.04	0.04	0.38
69.0	0.03	0.04	0.03	0.04	0.03	0.04	0.04	0.05	0.06	0.04	0.39
70.0	0.04	0.04	0.04	0.03	0.02	0.03	0.02	0.02	0.02	0.02	0.28
71.0	0.02	0.02	0.03	0.02	0.02	0.02	0.02	0.02	0.02	0.02	0.19
72.0	0.02	0.02	0.02	0.01	0.02	0.02	0.02	0.01	0.02	0.01	0.17
73.0	0.01	0.02	0.01	0.01	0.02	0.02	0.01	0.01	0.01	0.01	0.15
74.0	0.01	0.01	0.02	0.02	0.02	0.02	0.01	0.01	0.01	0.01	0.13
75.0	0.01	0.01	0.01	0.00	0.00	0.00	0.00	0.00	0.00	0.00	0.07
76.0	0.00	0.00	0.00	0.00	0.00	0.00	0.00	0.00	0.00	0.00	0.02
77.0	0.00	0.00	0.00	0.00	0.00	0.00	0.00	0.00	0.00	0.00	0.02

Logged Data Chart



8. Intersection of Enterprise and Town Center (Late Night) *Noise Report*

Summary

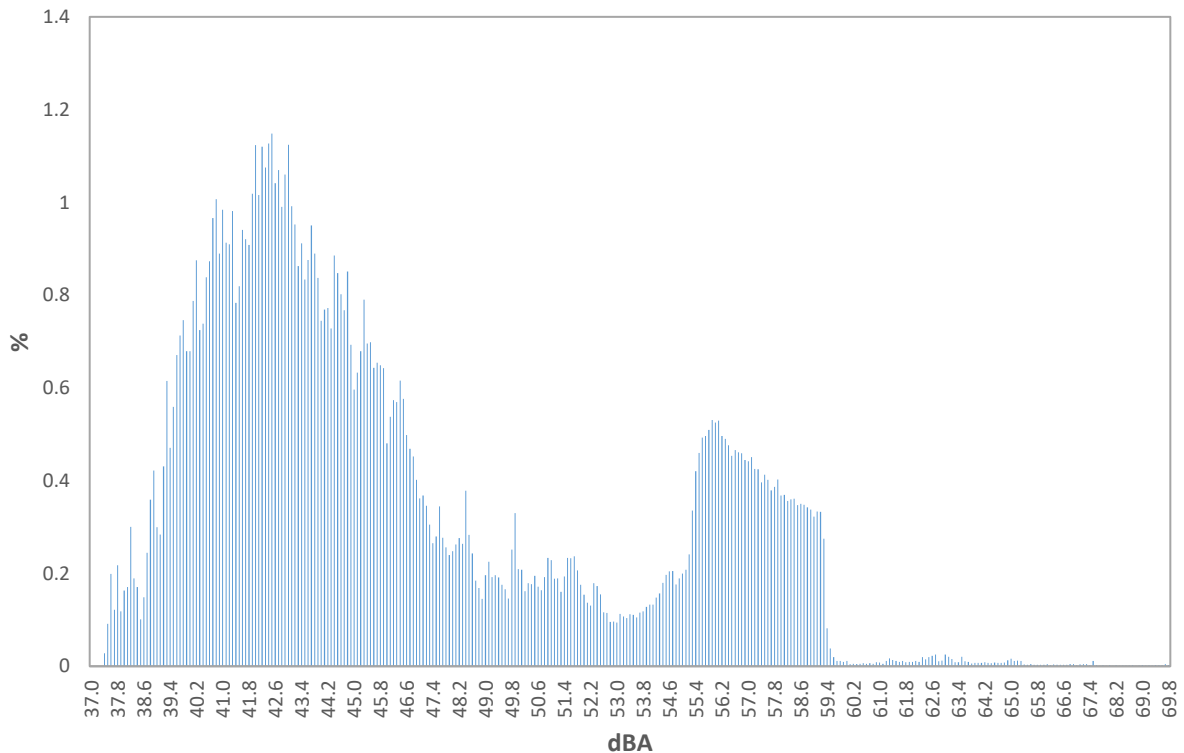
Date Friday, March 22, 2024
Start Time 12:15am
End Time 12:45am
File Name 831_Data.126
Device Model Larson Davis Model 831
Weighting A
Response Slow

Results

<u>Description</u>	<u>Value</u>	<u>Description</u>	<u>Value</u>
L _{eq}	51.7dB	L ₁₀	56.9dB
L _{max}	69.8dB	L ₅₀	44.5dB
L _{min}	37.4dB	L ₉₀	40.2dB

LAS > 65.0 dBA (Exceedance Count/Duration): 3, 5.2s
LAS > 85.0 dBA (Exceedance Count/Duration): 0, 0s

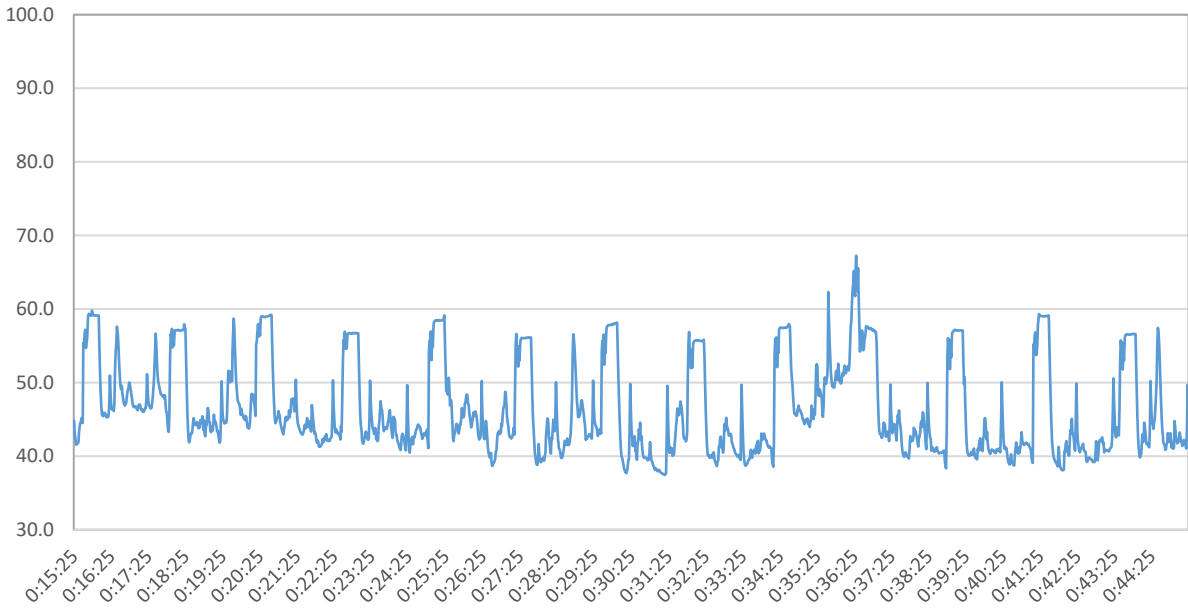
Statistics Chart



Statistics Table

dB	0.0	0.1	0.2	0.3	0.4	0.5	0.6	0.7	0.8	0.9	%
37.0	0.00	0.00	0.00	0.00	0.03	0.09	0.20	0.12	0.22	0.12	0.8
38.0	0.16	0.17	0.30	0.19	0.17	0.10	0.15	0.24	0.36	0.42	2.3
39.0	0.30	0.28	0.43	0.62	0.47	0.56	0.67	0.71	0.75	0.68	5.47
40.0	0.68	0.79	0.88	0.73	0.74	0.84	0.87	0.97	1.01	0.89	8.38
41.0	0.98	0.91	0.91	0.98	0.78	0.82	0.94	0.92	0.91	1.02	9.18
42.0	1.12	1.02	1.12	1.08	1.13	1.15	1.04	1.07	0.99	1.06	10.77
43.0	1.12	0.99	0.95	0.86	0.91	0.83	0.88	0.95	0.89	0.84	9.23
44.0	0.75	0.77	0.77	0.73	0.89	0.85	0.80	0.77	0.85	0.69	7.86
45.0	0.60	0.63	0.68	0.79	0.70	0.70	0.64	0.65	0.65	0.64	6.68
46.0	0.48	0.54	0.57	0.57	0.62	0.58	0.50	0.47	0.45	0.40	5.17
47.0	0.36	0.37	0.35	0.31	0.27	0.28	0.34	0.28	0.26	0.24	3.05
48.0	0.25	0.26	0.28	0.26	0.38	0.28	0.24	0.18	0.17	0.15	2.45
49.0	0.20	0.23	0.19	0.20	0.19	0.18	0.17	0.15	0.25	0.33	2.07
50.0	0.21	0.21	0.16	0.18	0.18	0.20	0.17	0.16	0.19	0.23	1.89
51.0	0.23	0.19	0.19	0.16	0.19	0.23	0.23	0.24	0.21	0.18	2.05
52.0	0.15	0.14	0.13	0.18	0.17	0.16	0.12	0.12	0.10	0.10	1.35
53.0	0.09	0.11	0.11	0.10	0.11	0.11	0.11	0.12	0.12	0.13	1.11
54.0	0.13	0.13	0.15	0.16	0.18	0.20	0.20	0.21	0.18	0.19	1.72
55.0	0.20	0.21	0.24	0.34	0.42	0.46	0.49	0.50	0.51	0.53	3.90
56.0	0.53	0.53	0.50	0.49	0.48	0.45	0.47	0.46	0.46	0.45	4.80
57.0	0.44	0.45	0.43	0.42	0.40	0.41	0.40	0.38	0.39	0.40	4.12
58.0	0.37	0.37	0.36	0.36	0.36	0.35	0.35	0.35	0.34	0.34	3.54
59.0	0.32	0.33	0.33	0.28	0.08	0.04	0.02	0.01	0.01	0.01	1.44
60.0	0.01	0.00	0.01	0.00	0.01	0.01	0.01	0.01	0.01	0.01	0.06
61.0	0.01	0.01	0.01	0.02	0.01	0.01	0.01	0.01	0.01	0.01	0.10
62.0	0.01	0.01	0.01	0.02	0.02	0.02	0.02	0.03	0.01	0.01	0.16
63.0	0.03	0.02	0.02	0.01	0.01	0.02	0.01	0.01	0.01	0.01	0.13
64.0	0.01	0.01	0.01	0.01	0.01	0.01	0.01	0.01	0.01	0.01	0.08
65.0	0.02	0.01	0.01	0.01	0.00	0.00	0.00	0.00	0.00	0.00	0.07
66.0	0.00	0.00	0.00	0.00	0.00	0.00	0.00	0.00	0.00	0.00	0.04
67.0	0.00	0.00	0.00	0.00	0.00	0.01	0.00	0.00	0.00	0.00	0.04
68.0	0.00	0.00	0.00	0.00	0.00	0.00	0.00	0.00	0.00	0.00	0.02
69.0	0.00	0.00	0.00	0.00	0.00	0.00	0.00	0.00	0.00	0.00	0.02

Logged Data Chart



Additional Noise Measurement Details – The Commons at Aliso Viejo Project

Noise Measurement	Duration	Sound Level (dBA L _{eq})	Notes
1. Near Intersection of Aliso Creek Rd. and Enterprise	2:26 p.m. – 2:41 p.m.	64.6	<ul style="list-style-type: none"> • The noise measurement was taken at the intersection of Aliso Creek Rd. and Enterprise, from the sidewalk. The distance from this location to the center of the intersection was approximately 75 feet. • The noise measurement characterizes existing daytime ambient noise levels at St. Moritz Resort Apartments, which are located at a similar setback from this intersection.
2. Enterprise, Near Vantis Dr.	3:06 p.m. – 3:21 p.m.	64.3	<ul style="list-style-type: none"> • The noise measurement was taken from the sidewalk, approximately 35 feet from the Enterprise roadway's centerline. • The noise measurement is disclosed for informational purposes and has not been applied for impact analysis at any receptor.
3. Vantis Residences – Facing Project Site	3:00 p.m. – 3:15 p.m.	51.6	<ul style="list-style-type: none"> • The noise measurement was taken from an outdoor area at Vantis Residences that overlooks the Project Site. • The primary source of noise at this location was distant traffic noise, mostly from Enterprise. • The noise measurement location was taken approximately 275 feet (slant distance) from the Enterprise roadway's centerline. • The noise measurement characterizes existing daytime ambient noise levels at Vantis Residences.
4. Near 101 Summit Office Park	3:30 p.m. – 3:45 p.m.	57.8	<ul style="list-style-type: none"> • This noise measurement was taken from the parking lot near 101 Summit Office Park, approximately 80 feet from the Enterprise roadway's centerline. • The noise measurement is disclosed for informational purposes and has not been applied for impact analysis at any receptor.

5. Nearby Restaurant Outdoor Seating	4:04 p.m. – 4:19 p.m.	61.6	<ul style="list-style-type: none"> • This noise measurement was taken from the parking lot, near the location of outdoor dining areas for nearby restaurant uses. • The primary source of noise was vehicles circulating within the parking lot. • Noise levels at the measurement location were deemed to be similar to noise levels at the outdoor dining area. • The noise measurement is disclosed for informational purposes and has not been applied for impact analysis at any receptor.
6. Intersection of Enterprise and Town Center (Midday)	1:47 p.m. – 2:47 p.m.	59.3	<ul style="list-style-type: none"> • This noise measurement was taken at the intersection of Enterprise and Town Center, from a grassy area. The distance to the center of the intersection was approximately 85 feet. • The noise measurement characterizes existing daytime ambient noise levels at land uses fronting this intersection (e.g., Hoag Health Center, various restaurants, etc.). • The noise measurement has been utilized in conjunction with other measurements at this location to estimate 24-hour CNEL noise levels. It has not been applied for impact analysis at any receptor.
7. Intersection of Enterprise and Town Center (Peak Hour)	4:21 p.m. – 5:21 p.m.	59.2	<ul style="list-style-type: none"> • Same as above.
8. Intersection of Enterprise and Town Center (Late Night)	12:15 a.m. – 12:45 a.m.	51.7	<ul style="list-style-type: none"> • Same as above.

Construction Noise Impact Analysis

noah tanski environmental consulting

Vantis Residences: GRADING

Ambient Noise Level:	51.6 dBA Leq
----------------------	--------------

Unmitigated

Equipment Noise Levels

Equipment	Noise Level - dBA		Workday Noise Level - dBA Leq
	Leq	Usage %	
Excavator - 400ft	56.7	0.4	52.7
Loader - 400ft	53.2	0.4	49.2
-	-	-	-
-	-	-	-
-	-	-	-
Combined dBA Leq:			54.3

Unmitigated Construction Noise Impact

Combined Equipment Noise Level	54.3 dBA Leq
Existing Shielding	0 dBA
Ground Factor	0
Unmitigated Construction Noise Level	54.3 dBA Leq
Ambient Noise Level	51.6 dBA
New Noise Level	56.2 dBA Leq
Unmitigated Noise Increase	4.6 dBA

Notes

Reference equipment noise levels were derived from the Federal Highway Administration's Roadway Construction Noise Model Version 2.0 (FHWA RCNM 2.0).

Construction noise from equipment was modeled as a half-acre rectangular source at a receptor distance of 400ft to simulate noise that would be generated by equipment operating across a half-acre parcel.

Conservatively, no terrain shielding or ground factor attenuation was assumed.

Construction Noise Impact Analysis

noah tanski environmental consulting

St. Moritz Resort Apartments: GRADING

Ambient Noise Level:	64.6 dBA Leq
----------------------	--------------

Unmitigated

Equipment Noise Levels

Equipment	Noise Level - dBA		Workday Noise Level - dBA Leq
	Leq	Usage %	
Excavator - 550ft	54.2	0.4	50.2
Loader - 550ft	50.7	0.4	46.7
-	-	-	-
-	-	-	-
-	-	-	-
Combined dBA Leq:			51.8

Unmitigated Construction Noise Impact

Combined Equipment Noise Level	51.8 dBA Leq
Existing Shielding	0 dBA
Ground Factor	0
Unmitigated Construction Noise Level	51.8 dBA Leq
Ambient Noise Level	64.6 dBA
New Noise Level	64.8 dBA Leq
Unmitigated Noise Increase	0.2 dBA

Notes

Reference equipment noise levels were derived from the Federal Highway Administration's Roadway Construction Noise Model Version 2.0 (FHWA RCNM 2.0).

Construction noise from equipment was modeled as a half-acre rectangular source at a receptor distance of 550ft to simulate noise that would be generated by equipment operating across a half-acre parcel.

Conservatively, no shielding from existing buildings was assumed.

RESULTS: SOUND LEVELS

AVB Commons

NTEC		21 November 2022										
Noah Tanski		TNM 2.5										
		Calculated with TNM 2.5										
RESULTS: SOUND LEVELS												
PROJECT/CONTRACT:		AVB Commons										
RUN:		AVB Commons: Construction Trucks										
BARRIER DESIGN:		INPUT HEIGHTS										
		Average pavement type shall be used unless a State highway agency substantiates the use of a different type with approval of FHWA.										
ATMOSPHERICS:		68 deg F, 50% RH										
Receiver												
Name	No.	#DUs	Existing LAeq1h	No Barrier LAeq1h	Increase over existing		Type	With Barrier		Noise Reduction		
				Calculated	Crit'n	Calculated	Crit'n	Impact	Calculated LAeq1h	Calculated	Goal	Calculated minus Goal
							Sub'l Inc					
			dB	dB	dB	dB	dB		dB	dB	dB	dB
75ft from Center of Roadway	1	1	0.0	59.9	66	59.9	10	----	59.9	0.0	8	-8.0
Dwelling Units		# DUs	Noise Reduction									
			Min	Avg	Max							
			dB	dB	dB							
All Selected		1	0.0	0.0	0.0							
All Impacted		0	0.0	0.0	0.0							
All that meet NR Goal		0	0.0	0.0	0.0							