



PROTECTED TREE REPORT

PREPARED FOR

Chaminade College Preparatory - High School

PROPERTY

Chaminade College Preparatory - High School

7500 Chaminade Ave

West Hills, CA 91304

CONTACT

Jessica Pakdaman

818-716-2797

jessica@raa-inc.com

December 7, 2023

PREPARED BY

LISA SMITH, THE TREE RESOURCE ®

REGISTERED CONSULTING ARBORIST #464

ISA BOARD CERTIFIED MASTER ARBORIST #WE3782BM

ISA TREE RISK ASSESSOR QUALIFIED - INSTRUCTOR

MEMBER OF AMERICAN SOCIETY OF CONSULTING ARBORISTS

P.O. BOX 49314, LOS ANGELES, CA 90049

T 310-663-2290 E lisa@thetreeresource.com

TABLE OF CONTENTS

SUMMARY	3
ASSIGNMENT	5
LIMITATIONS	5
TREE CHARACTERISTICS AND SITE CONDITIONS	5
IMPACT ANALYSIS AND SPECIFIC RECOMMENDATIONS	6
SUMMARY OF DATA - Tree Counts	7
APPENDIX A –TREE LOCATION MAP - SURVEY L1.1	8
APPENDIX A –TREE LOCATION MAP - SURVEY L1.2	9
APPENDIX A –TREE LOCATION MAP - SURVEY L1.3	10
APPENDIX A –TREE LOCATION MAP - SURVEY L1.4	11
APPENDIX B - PHOTOGRAPHS	12
APPENDIX C – SUMMARY OF FIELD INSPECTION	23
APPENDIX D – SUMMARY OF DATA	49
GENERAL RECOMMENDATIONS	
New Tree Planting	50
Tree Maintenance and Pruning	52
Diseases and Insects, Grade Changes, Inspection	54
ASSUMPTIONS AND LIMITING CONDITIONS	55

PROTECTED TREE REPORT

7500 Chaminade Ave, West Hills, CA 91304

SUMMARY

PROJECT OVERVIEW	
Site Address	7500 Chaminade Ave, West Hills, CA 91304
Location and/or Specific Plan	Chatsworth
Project Description	New Buildings and Revised Campus Plans
Date of Site Visit	1/13/23 & 01/25/23
Number of Protected Trees on Site	0
Number of Non-Protected Significant Trees 8" + on Site	364 Trees
REMOVAL of Non-Protected Significant 8" + Trees on Site	40 removals
Number of Street Parkway Trees on Site	33 Trees with 1 removal

This Tree Report was prepared at the request of the property owner, Chaminade College Preparatory High School, who is preparing to revise and update the campus plan to build two new buildings, relocate and upgrade existing athletic and other outdoor facilities, and reconfigure existing on-site surface parking areas, in conjunction with the continued operation of the High School on this property. The subject property is x square feet and is located in the Chatsworth area of Los Angeles.

PROTECTED TREES, URBAN FORESTRY DIVISION

This property is under the jurisdiction of the City of Los Angeles and guided by the Native Tree Protection Ordinance No. 186873. **Protected Trees** are defined by this ordinance as oaks (*Quercus* sp) indigenous to California but excluding the scrub oak (*Quercus dumosa*); Southern California black walnut (*Juglans californica* var. *californica*); Western sycamore (*Platanus racemosa*) and California bay laurel (*Umbellularia californica*) trees with a diameter at breast height (DBH) of four inches (4") or greater. **Protected Shrubs** are defined as Mexican elderberry (*Sambucus mexicana*); Toyon (*Heteromeles arbutifolia*) which measure four inches or more in cumulative diameter, four and one-half feet above the ground level at the base of the shrub.

There are NO trees or shrubs on this property that would be considered protected native within the City of Los Angeles Native Tree Protection Ordinance.

NEIGHBOR TREES

I have also inspected the neighboring properties to confirm there are no protected tree or shrub species that are adjacent to the construction zone, or in areas of impact.

CITY OF LOS ANGELES PARKWAY STREET TREES, URBAN FORESTRY DIVISION

At this time, I observed (33) Parkway Street Trees, 32 to be retained and protected in place. 1 removal.

Cohasset Street - There are (13) thirteen Parkway Street Trees - all Chitalpa 'Pink Dawn'

Saticoy Street - There are (13) thirteen Parkway Street Trees - all Chitalpa 'Pink Dawn'

Saticoy Street- There are (3) three Parkway Street Trees- all Crepe Myrtle

Keswick Avenue - There are (4) four Parkway Street Trees - 2 Pear and 2 African Sumac

One of these parkway street trees #ST489 will be impacted by the proposed project installation of a pedestrian bridge located over Saticoy Street.

All other street trees will be retained and protected in place.

NON-PROTECTED SIGNIFICANT TREES, DEPARTMENT OF CITY PLANNING

The Department of City Planning requires the identification of the location, size, type and condition of all existing trees on the site with a DBH (Diameter at Breast Height) of 8 inches (8") or greater. These trees will be identified as **Non-Protected Significant Trees**.

ACCURATE TOTAL: At this time, I observed three hundred and sixty-four (364) **Non-Protected Significant Trees 8" DBH (Diameter at Breast Height) or greater** on the property.

RETAIN: Three Hundred and twenty-four (324) trees will be retained and protected in place.

REMOVAL: Forty (40) non-protected significant trees 8" + will be impacted by construction and are recommended for removal and replacement to the satisfaction of the City of Los Angeles Department of City Planning.

SMALLER THAN 8" - Non-Protected and NON significant Trees (1" - 8" trunk diameter)

There are one-hundred and eight (108) **Non-protected NON significant trees** on the property.

Seven (7) will be removed. These trees require no replacement. Most of these trees are small, such as 1" - 2" diameter, newly installed, poorly establishing, such as Pink Trumpet Trees that are averaging 2" in diameter, and a few small pepper trees and London plane trees.

One-hundred and one trees (101) will be retained and protected in place.

No Existing Trees from old Survey - 12 trees not on map, placeholder #'s are in the spreadsheet.

The original survey had inadvertently mapped some trees that are not there, and appear to not have been there or died due to the mega-drought and were removed.

These trees #'s are on the spreadsheet, but indicated as a GREY numbered circle on the map.

These #'s are 23, 24, 118, 119, 131, 170, 180, 191, 203, 204, 220 & 478

ASSIGNMENT

The Assignment included:

- Field Observation and Inventory of Trees on Site
- Recommendations for the protection of trees to remain
- Photographs of the subject trees are included in Appendix B
- Matrix of proposed protected tree removals and protected trees to remain
- Evaluation of potential construction impacts
- A Tree Location Plot Map is included in Appendix A
- Protected tree construction impact guidelines

LIMITS OF THE ASSIGNMENT

The field inspection was a visual, grade level tree assessment. No special tools or equipment were used. No tree risk assessments were performed. My site examination and the information in this report is limited to the date and time the inspection occurred. The information in this report is limited to the condition of the trees at the time of my inspection.

TREE CHARACTERISTICS AND SITE CONDITIONS

Detailed information with respect to size, condition, species and recommendations are included in the Summary of Field Inspections in Appendix C. The trees are numbered on the Tree Location Map in Appendix A.

IMPACT ANALYSIS AND SPECIFIC RECOMMENDATIONS

NON-PROTECTED SIGNIFICANT TREES 8" or GREATER in Trunk Diameter

TOTAL: At this time, I observed three hundred and sixty-four (364) **Non-Protected Significant Trees 8" or greater** on the property.

RETAINED: Three hundred and twenty-four (324) trees will be retained and protected in place.

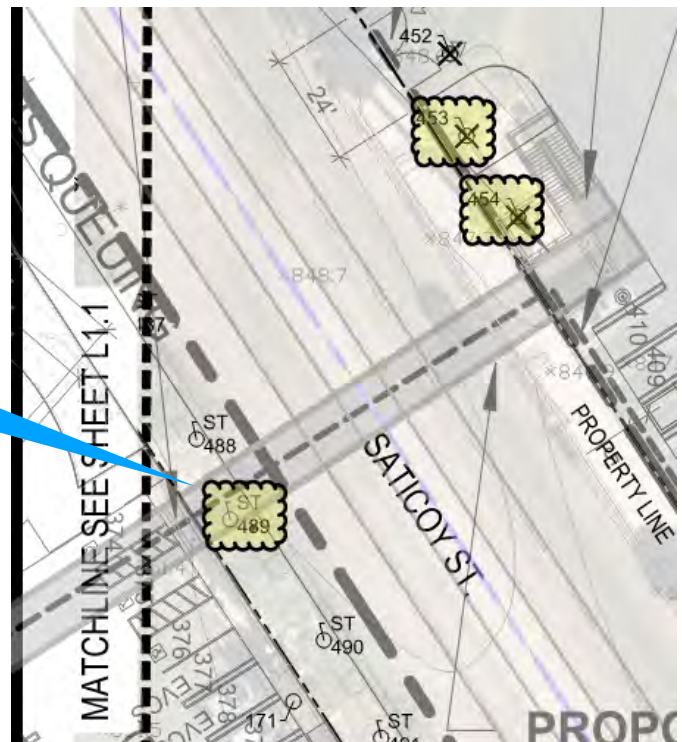
REMOVAL: Forty (40) non-protected significant trees 8" or greater will be impacted by construction and are recommended for removal and replacement to the satisfaction of the City of Los Angeles Department of City Planning.

The majority of these removals are less desirable species, such as stone pine which are highly prone to root plate failure when overly mature. Other species are Redwood (*Sequoia sempervirens*), which are not climate adapted, and do not perform well in the San Fernando Valley. Other removal species are non-native and less desirable, such as evergreen ash, Mexican fan palms, which provide no shade and queen palms.

STREET TREES

Thirty-two parkway trees to be retained and protected in place. One parkway street tree #ST489 a Pink Dawn (*Chitalpa tashkentensis*) will be impacted by the proposed pedestrian bridge. This tree will be removed and replaced at a 2:1 ratio to the satisfaction of the Urban Forestry Division.

**Street tree #ST489
impacted by
pedestrian bridge**



SUMMARY OF DATA COUNTS

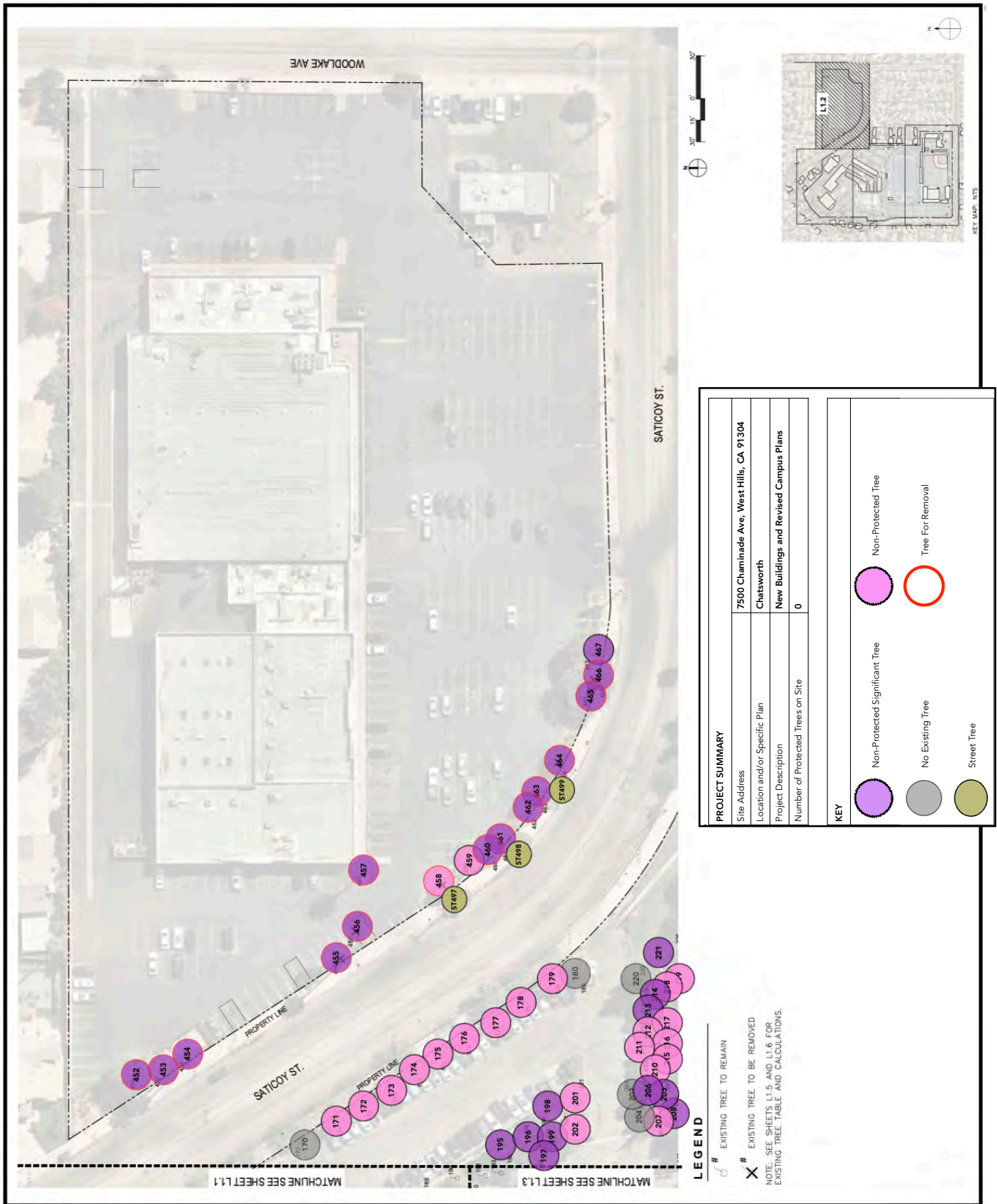
Summary of Data (also located on page 47)

	TOTAL	TOTAL FOR REMOVAL	TOTAL TO BE RETAINED	Trees to be Planted in Replacement
Non-Protected Significant Trees 8" or Greater (Less than 12")	54	10	44	10
Non-Protected Significant Trees 12" or Greater	310	30	280	30
Non-Protected Trees LESS than 8"	108	7	101	0
Street Trees	33	1	32	2
Not existing trees - place holder # (grey circle on map)	12	0	0	0
Totals	517	48	457	42

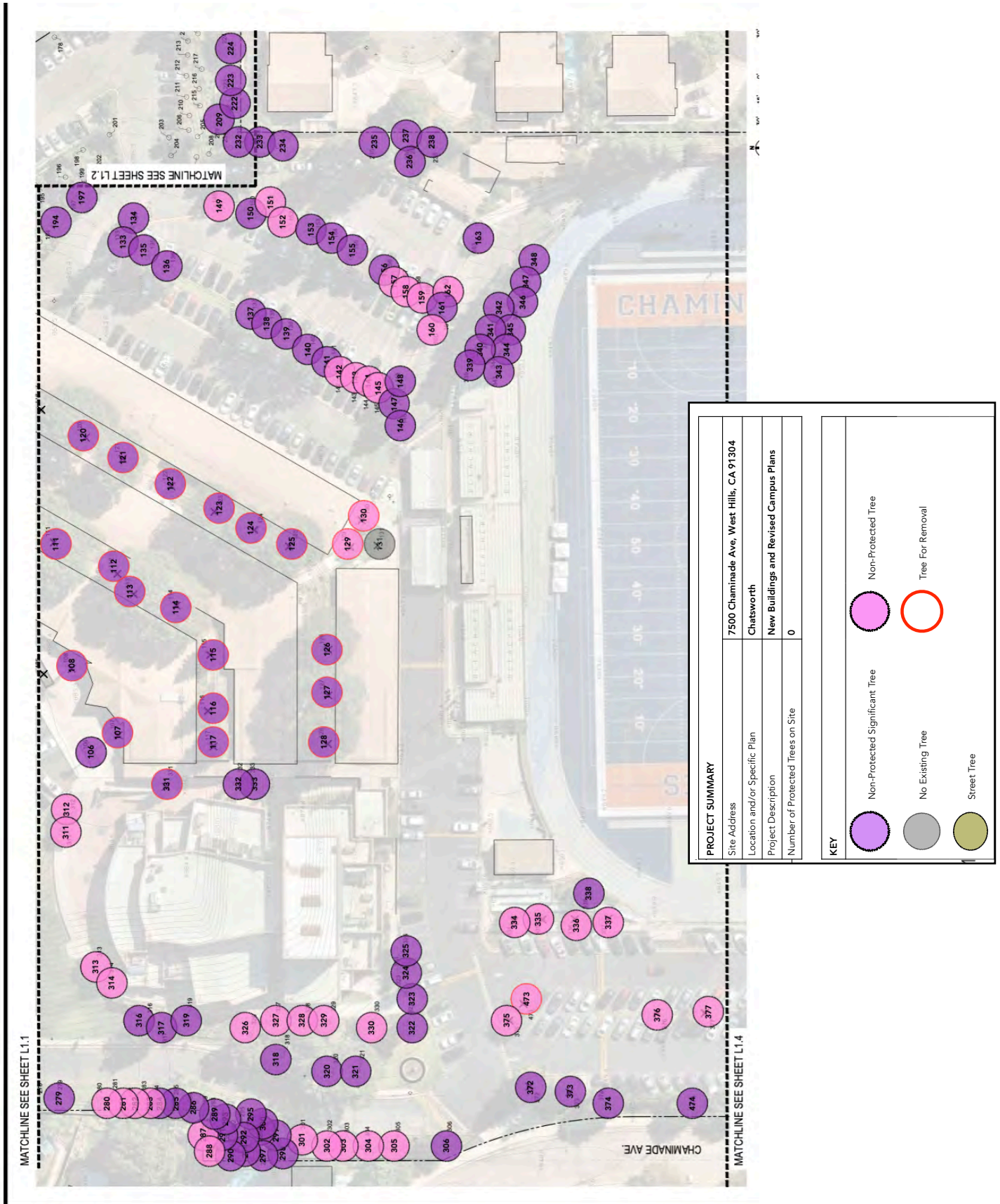
APPENDIX A - TREE LOCATION - SURVEY MAP, REDUCED L1.1



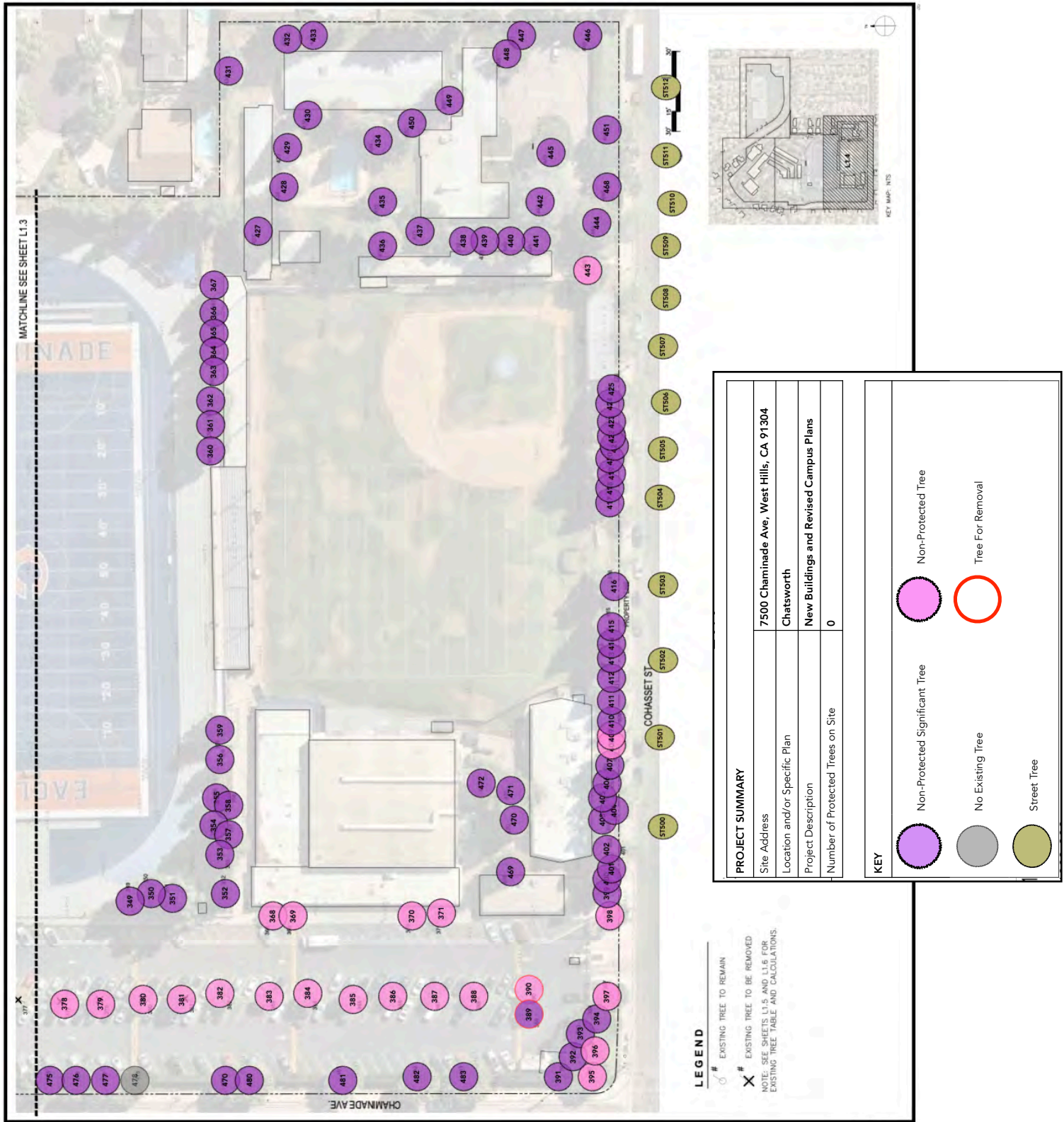
APPENDIX A - TREE LOCATION MAP, SITE PLAN REDUCED L1.2



APPENDIX A - TREE LOCATION MAP, SITE PLAN REDUCED L1.3



APPENDIX A - TREE LOCATION MAP, SITE PLAN REDUCED L1.4



APPENDIX B - PHOTOGRAPHS



PHOTO 1 - Shows parkway street tree #ST489 a Pink Dawn (*Chitalpa tashkentensis*) that will be impacted by the proposed pedestrian bridge. This tree will be removed and replaced to the satisfaction of the Urban Forestry Division.

APPENDIX B - PHOTOGRAPHS



PHOTO 2 - Shows some of the trees on site.

APPENDIX B - PHOTOGRAPHS



PHOTO 3 - Shows some of the trees on site.

APPENDIX B - PHOTOGRAPHS



PHOTO 4 - Shows some of the trees on site.

APPENDIX B - PHOTOGRAPHS



PHOTO 5- Shows some of the trees on site.

APPENDIX B - PHOTOGRAPHS



PHOTO 6 - Shows some of the trees on site.

APPENDIX B - PHOTOGRAPHS



PHOTO 7 - Shows some of the trees on site.

APPENDIX B - PHOTOGRAPHS



PHOTO 8 - Shows some of the trees on site.

APPENDIX B - PHOTOGRAPHS



PHOTO 9 - Shows some of the trees on site.

APPENDIX B - PHOTOGRAPHS



PHOTO 10 - Shows some of the trees on site.

APPENDIX B - PHOTOGRAPHS



PHOTO 11 - Shows some of the trees on site.

APPENDIX C - SUMMARY OF FIELD INSPECTION

KEY	12" or Greater	8" or greater	Remove	Rating Code: A = Excellent, B = Good, C = Fair, D = Poor, E = Nearly Dead, F = Dead				
Tree #	Species	Status	DBH (")	Height (')	Spread (')	Summary of Condition	REMOVE	RETAIN
1	Coast Redwood <i>Sequoia sempervirens</i>	Non-Protected Significant	12	60	20	C-D		RETAIN
2	Coast Redwood <i>Sequoia sempervirens</i>	Non-Protected Significant	20	65	25	C-D		RETAIN
3	Coast Redwood <i>Sequoia sempervirens</i>	Non-Protected Significant	12	50	20	D		RETAIN
4	Coast Redwood <i>Sequoia sempervirens</i>	Non-Protected Significant	15	50	20	D		RETAIN
5	Coast Redwood <i>Sequoia sempervirens</i>	Non-Protected Significant	12	40	20	D		RETAIN
6	Coast Redwood <i>Sequoia sempervirens</i>	Non-Protected Significant	14	50	20	D		RETAIN
7	Coast Redwood <i>Sequoia sempervirens</i>	Non-Protected Significant	14	50	20	D		RETAIN
8	Coast Redwood <i>Sequoia sempervirens</i>	Non-Protected Significant	14	40	20	D		RETAIN
9	Coast Redwood <i>Sequoia sempervirens</i>	Non-Protected Significant	13	40	20	D		RETAIN
10	Coast Redwood <i>Sequoia sempervirens</i>	Non-Protected Significant	12	40	20	D		RETAIN
11	Coast Redwood <i>Sequoia sempervirens</i>	Non-Protected Significant	12	40	20	D		RETAIN
12	California Pepper <i>Schinus molle</i>	Non-Protected	5	15	6	C		RETAIN
13	California Pepper <i>Schinus molle</i>	Non-Protected	4	15	6	C		RETAIN
14	Coast Redwood <i>Sequoia sempervirens</i>	Non-Protected Significant	12	15	15	C-D		RETAIN
15	Canary Island Pine <i>Pinus canariensis</i>	Non-Protected Significant	14	45	15	C		RETAIN
16	Canary Island Pine <i>Pinus canariensis</i>	Non-Protected Significant	14	45	15	C		RETAIN
17	Canary Island Pine <i>Pinus canariensis</i>	Non-Protected Significant	18	50	20	C		RETAIN
18	Canary Island Pine <i>Pinus canariensis</i>	Non-Protected Significant	15	55	15	C		RETAIN
19	Canary Island Pine <i>Pinus canariensis</i>	Non-Protected Significant	20	55	15	C		RETAIN
20	Canary Island Pine <i>Pinus canariensis</i>	Non-Protected Significant	20	60	15	C		RETAIN

APPENDIX C - SUMMARY OF FIELD INSPECTION

KEY	12" or Greater	8" or greater	Remove					
Tree #	Species	Status	DBH (")	Height (')	Spread (')	Summary of Condition	REMOVE	RETAIN
21	Canary Island Pine <i>Pinus canariensis</i>	Non-Protected Significant	19	60	20	C		RETAIN
22	Canary Island Pine <i>Pinus canariensis</i>	Non-Protected Significant	16	60	20	C		RETAIN
23	Canary Island Pine <i>Pinus canariensis</i>	No Existing Tree						
24	Canary Island Pine <i>Pinus canariensis</i>	No Existing Tree						
25	Canary Island Pine <i>Pinus canariensis</i>	Non-Protected Significant	19	60	20	C		RETAIN
26	Canary Island Pine <i>Pinus canariensis</i>	Non-Protected Significant	18	50	20	C		RETAIN
27	Canary Island Pine <i>Pinus canariensis</i>	Non-Protected Significant	18	50	15	C		RETAIN
28	Canary Island Pine <i>Pinus canariensis</i>	Non-Protected Significant	14	60	15	C		RETAIN
29	Canary Island Pine <i>Pinus canariensis</i>	Non-Protected Significant	14	60	15	C		RETAIN
30	Coast Redwood <i>Sequoia sempervirens</i>	Non-Protected Significant	16	60	15	C		RETAIN
31	Coast Redwood <i>Sequoia sempervirens</i>	Non-Protected Significant	10	40	10	D		RETAIN
32	Coast Redwood <i>Sequoia sempervirens</i>	Non-Protected Significant	11	45	15	D		RETAIN
33	Coast Redwood <i>Sequoia sempervirens</i>	Non-Protected Significant	12	45	15	D		RETAIN
34	Coast Redwood <i>Sequoia sempervirens</i>	Non-Protected Significant	12	40	15	D		RETAIN
35	Coast Redwood <i>Sequoia sempervirens</i>	Non-Protected Significant	20	65	20	C		RETAIN
36	Coast Redwood <i>Sequoia sempervirens</i>	Non-Protected Significant	12	45	15	C-D		RETAIN
37	Canary Island Pine <i>Pinus canariensis</i>	Non-Protected Significant	10	45	15	C-D		RETAIN
38	Canary Island Pine <i>Pinus canariensis</i>	Non-Protected Significant	18	65	20	C		RETAIN
39	Canary Island Pine <i>Pinus canariensis</i>	Non-Protected Significant	14	55	15	C		RETAIN
40	Canary Island Pine <i>Pinus canariensis</i>	Non-Protected Significant	19	65	20	C		RETAIN

APPENDIX C - SUMMARY OF FIELD INSPECTION

KEY	12" or Greater	8" or greater	Remove	Rating Code: A = Excellent, B = Good, C = Fair, D = Poor, E = Nearly Dead, F = Dead				
Tree #	Species	Status	DBH (")	Height (')	Spread (')	Summary of Condition	REMOVE	RETAIN
41	Canary Island Pine <i>Pinus canariensis</i>	Non-Protected Significant	19	65	20	C		RETAIN
42	California Pepper <i>Schinus molle</i>	Non-Protected	5	15	12	D		RETAIN
43	California Pepper <i>Schinus molle</i>	Non-Protected	6	15	15	C-D		RETAIN
44	California Pepper <i>Schinus molle</i>	Non-Protected	6	15	12	C		RETAIN
45	California Pepper <i>Schinus molle</i>	Non-Protected Significant	25	25	20	C-D		RETAIN
46	California Pepper <i>Schinus molle</i>	Non-Protected Significant	8, 8	25	20	C-D		RETAIN
47	California Pepper <i>Schinus molle</i>	Non-Protected Significant	12	25	15	D		RETAIN
48	Camphor Tree <i>Cinnamomum camphora</i>	Non-Protected Significant	9	25	25	D		RETAIN
49	Camphor Tree <i>Cinnamomum camphora</i>	Non-Protected Significant	9	25	25	D		RETAIN
50	Camphor Tree <i>Cinnamomum camphora</i>	Non-Protected Significant	8	25	25	D		RETAIN
51	Coast Redwood <i>Sequoia sempervirens</i>	Non-Protected Significant	14	40	15	C-D		RETAIN
52	Coast Redwood <i>Sequoia sempervirens</i>	Non-Protected Significant	14	40	15	C-D		RETAIN
53	Coast Redwood <i>Sequoia sempervirens</i>	Non-Protected Significant	19	40	15	C-D		RETAIN
54	Coast Redwood <i>Sequoia sempervirens</i>	Non-Protected Significant	19	40	15	C-D		RETAIN
55	Coast Redwood <i>Sequoia sempervirens</i>	Non-Protected Significant	18	40	15	C-D		RETAIN
56	Coast Redwood <i>Sequoia sempervirens</i>	Non-Protected Significant	18	40	15	C		RETAIN
57	Canary Island Pine <i>Pinus canariensis</i>	Non-Protected Significant	19	50	25	C		RETAIN
58	Canary Island Pine <i>Pinus canariensis</i>	Non-Protected Significant	19	50	25	C		RETAIN
59	Canary Island Pine <i>Pinus canariensis</i>	Non-Protected	5	30	6	C		RETAIN
60	Canary Island Pine <i>Pinus canariensis</i>	Non-Protected Significant	12	45	20	C		RETAIN

APPENDIX C - SUMMARY OF FIELD INSPECTION

KEY	12" or Greater	8" or greater	Remove	Rating Code: A = Excellent, B = Good, C = Fair, D = Poor, E = Nearly Dead, F = Dead				
Tree #	Species	Status	DBH (")	Height (')	Spread (')	Summary of Condition	REMOVE	RETAIN
61	Sweetgum <i>Liquidambar styraciflua</i>	Non-Protected Significant	8	35	25	C		RETAIN
62	Canary Island Pine <i>Pinus canariensis</i>	Non-Protected	2	25	20	C		RETAIN
63	Canary Island Pine <i>Pinus canariensis</i>	Non-Protected	2	25	20	C		RETAIN
64	Canary Island Pine <i>Pinus canariensis</i>	Non-Protected	3	15	15	C		RETAIN
65	Canary Island Pine <i>Pinus canariensis</i>	Non-Protected	3	25	25	D		RETAIN
66	Canary Island Pine <i>Pinus canariensis</i>	Non-Protected	4	20	15	C		RETAIN
67	Canary Island Pine <i>Pinus canariensis</i>	Non-Protected	4	45	25	D		RETAIN
68	Canary Island Pine <i>Pinus canariensis</i>	Non-Protected Significant	16	65	25	C		RETAIN
69	Mexican Fan palm <i>Washingtonia robusta</i>	Non-Protected Significant	16	50	5	C		RETAIN
70	Mexican Fan palm <i>Washingtonia robusta</i>	Non-Protected Significant	16	50	5	C		RETAIN
71	Mexican Fan palm <i>Washingtonia robusta</i>	Non-Protected Significant	16	50	5	C		RETAIN
72	Windmill Palm <i>Trachycarpus fortunei</i>	Non-Protected Significant	16	10	5	C		RETAIN
73	Windmill Palm <i>Trachycarpus fortunei</i>	Non-Protected Significant	16	10	5	C		RETAIN
74	Mexican Fan palm <i>Washingtonia robusta</i>	Non-Protected Significant	16	50	5	C		RETAIN
75	Mexican Fan palm <i>Washingtonia robusta</i>	Non-Protected Significant	16	65	10	C		RETAIN
76	Mexican Fan palm <i>Washingtonia robusta</i>	Non-Protected Significant	16	25	10	C		RETAIN
77	Mexican Fan palm <i>Washingtonia robusta</i>	Non-Protected Significant	16	20	10	C		RETAIN
78	Mexican Fan palm <i>Washingtonia robusta</i>	Non-Protected Significant	16	20	10	C		RETAIN
79	Mexican Fan palm <i>Washingtonia robusta</i>	Non-Protected Significant	16	50	10	C		RETAIN
80	Mexican Fan Palm <i>Washingtonia robusta</i>	Non-Protected Significant	16	50	10	C		RETAIN

APPENDIX C - SUMMARY OF FIELD INSPECTION

KEY	12" or Greater	8" or greater	Remove	Rating Code: A = Excellent, B = Good, C = Fair, D = Poor, E = Nearly Dead, F = Dead				
Tree #	Species	Status	DBH (")	Height (')	Spread (')	Summary of Condition	REMOVE	RETAIN
81	Windmill Palm <i>Trachycarpus fortunei</i>	Non-Protected	4	10	5	C		RETAIN
82	Windmill Palm <i>Trachycarpus fortunei</i>	Non-Protected	5	10	5	C		RETAIN
83	Jacaranda <i>Jacaranda mimosifolia</i>	Non-Protected Significant	20	40	40	C		RETAIN
84	Jacaranda <i>Jacaranda mimosifolia</i>	Non-Protected Significant	20	40	40	C		RETAIN
85	Stone pine <i>Pinus pinea</i>	Non-Protected Significant	18	35	30	C		RETAIN
86	Deodar Cedar <i>Cedrus deodara</i>	Non-Protected Significant	20	50	35	C		RETAIN
87	Deodar Cedar <i>Cedrus deodara</i>	Non-Protected Significant	15	45	20	C		RETAIN
88	Silver Dollar Gum <i>Eucalyptus polyanthemos</i>	Non-Protected Significant	22	40	20	C-D		RETAIN
89	Citrus <i>Citrus sp.</i>	Non-Protected	5	8	8	C		RETAIN
90	Citrus <i>Citrus sp.</i>	Non-Protected	6	8	8	C		RETAIN
91	Citrus <i>Citrus sp.</i>	Non-Protected	7	8	8	C		RETAIN
92	Avocado <i>Persea americana</i>	Non-Protected	6	10	8	C		RETAIN
93	Sweetgum <i>Liquidambar styraciflua</i>	Non-Protected Significant	14	35	20	C		RETAIN
94	Coast Redwood <i>Sequoia sempervirens</i>	Non-Protected Significant	31	60	25	C		RETAIN
95	Coast Redwood <i>Sequoia sempervirens</i>	Non-Protected Significant	32	55	25	D		RETAIN
96	Coast Redwood <i>Sequoia sempervirens</i>	Non-Protected Significant	30	55	25	D		RETAIN
97	Coast Redwood <i>Sequoia sempervirens</i>	Non-Protected Significant	30	55	25	D		RETAIN
98	Coast Redwood <i>Sequoia sempervirens</i>	Non-Protected Significant	30	55	25	D		RETAIN
99	Coast Redwood <i>Sequoia sempervirens</i>	Non-Protected Significant	30	55	25	D		RETAIN
100	Coast Redwood <i>Sequoia sempervirens</i>	Non-Protected Significant	24	55	25	D		RETAIN

APPENDIX C - SUMMARY OF FIELD INSPECTION

KEY	12" or Greater	8" or greater	Remove	Rating Code: A = Excellent, B = Good, C = Fair, D = Poor, E = Nearly Dead, F = Dead				
Tree #	Species	Status	DBH (")	Height (')	Spread (')	Summary of Condition	REMOVE	RETAIN
101	Sweetgum <i>Liquidambar styraciflua</i>	Non-Protected Significant	18	30	15	C-D		RETAIN
102	Queen Palm <i>Syagrus romanzoffiana</i>	Non-Protected Significant	9	25	10	C	REMOVE	
103	Queen Palm <i>Syagrus romanzoffiana</i>	Non-Protected Significant	11	25	10	C	REMOVE	
104	Queen Palm <i>Syagrus romanzoffiana</i>	Non-Protected Significant	11	25	10	C	REMOVE	
105	Windmill Palm <i>Trachycarpus fortunei</i>	Non-Protected	7	20	5	C	REMOVE	
106	Windmill Palm <i>Trachycarpus fortunei</i>	Non-Protected	7	20	5	C		RETAIN
107	Queen Palm <i>Syagrus romanzoffiana</i>	Non-Protected Significant	12	25	4	D	REMOVE	
108	Queen Palm <i>Syagrus romanzoffiana</i>	Non-Protected Significant	12	35	10	C	REMOVE	
109	Stone Pine <i>Pinus pinea</i>	Non-Protected Significant	40	70	35	C-D	REMOVE	
110	Stone Pine <i>Pinus pinea</i>	Non-Protected Significant	29	70	35	C-D	REMOVE	
111	Stone Pine <i>Pinus pinea</i>	Non-Protected Significant	30	70	35	C-D	REMOVE	
112	Stone Pine <i>Pinus pinea</i>	Non-Protected Significant	35	70	35	C-D	REMOVE	
113	Stone Pine <i>Pinus pinea</i>	Non-Protected Significant	30	70	35	C-D	REMOVE	
114	Stone Pine <i>Pinus pinea</i>	Non-Protected Significant	30	70	35	C-D	REMOVE	
115	Coast Redwood <i>Sequoia sempervirens</i>	Non-Protected Significant	18	50	20	C-D	REMOVE	
116	Coast Redwood <i>Sequoia sempervirens</i>	Non-Protected Significant	20	50	20	C-D	REMOVE	
117	Coast Redwood <i>Sequoia sempervirens</i>	Non-Protected Significant	24	50	20	C-D	REMOVE	
118	Stone Pine <i>Pinus pinea</i>	No Existing Tree						
119	Stone Pine <i>Pinus pinea</i>	No Existing Tree						
120	Canary Island Pine <i>Pinus canariensis</i>	Non-Protected Significant	20	75	20	C	REMOVE	

APPENDIX C - SUMMARY OF FIELD INSPECTION

KEY	12" or Greater	8" or greater	Remove	Rating Code: A = Excellent, B = Good, C = Fair, D = Poor, E = Nearly Dead, F = Dead				
Tree #	Species	Status	DBH (")	Height (')	Spread (')	Summary of Condition	REMOVE	RETAIN
121	Stone Pine <i>Pinus pinea</i>	Non-Protected Significant	40	80	40	C-D	REMOVE	
122	Stone Pine <i>Pinus pinea</i>	Non-Protected Significant	30	80	35	C-D	REMOVE	
123	Stone Pine <i>Pinus pinea</i>	Non-Protected Significant	30	80	35	C-D	REMOVE	
124	Stone Pine <i>Pinus pinea</i>	Non-Protected Significant	27	80	35	C-D	REMOVE	
125	Stone Pine <i>Pinus pinea</i>	Non-Protected Significant	25	80	35	C-D	REMOVE	
126	Stone Pine <i>Pinus pinea</i>	Non-Protected Significant	30	80	35	C-D	REMOVE	
127	Stone Pine <i>Pinus pinea</i>	Non-Protected Significant	30	80	45	C-D	REMOVE	
128	Stone Pine <i>Pinus pinea</i>	Non-Protected Significant	30	80	40	C-D	REMOVE	
129	Golden Trumpet <i>Handroanthus chrysotrichus</i>	Non-Protected	6	15	12	C-D	REMOVE	
130	Purple Leaf Plum <i>Prunus cerasifera</i>	Non-Protected	5	6	5	C-D	REMOVE	
131	Purple Leaf Plum <i>Prunus cerasifera</i>	No Existing Tree						
132	Coast Redwood <i>Sequoia sempervirens</i>	Non-Protected Significant	21	40	20	C-D	REMOVE	
133	Canary Island Pine <i>Pinus canariensis</i>	Non-Protected Significant	15	60	20	C		RETAIN
134	Coast Redwood <i>Sequoia sempervirens</i>	Non-Protected Significant	13	40	20	D		RETAIN
135	Canary Island Pine <i>Pinus canariensis</i>	Non-Protected Significant	17	60	20	C		RETAIN
136	Canary Island Pine <i>Pinus canariensis</i>	Non-Protected Significant	15	65	20	C		RETAIN
137	Canary Island Pine <i>Pinus canariensis</i>	Non-Protected Significant	18	65	20	C		RETAIN
138	Canary Island Pine <i>Pinus canariensis</i>	Non-Protected Significant	19	65	20	C		RETAIN
139	Canary Island Pine <i>Pinus canariensis</i>	Non-Protected Significant	17	65	20	C		RETAIN
140	Canary Island Pine <i>Pinus canariensis</i>	Non-Protected Significant	18	65	20	C		RETAIN

APPENDIX C - SUMMARY OF FIELD INSPECTION

KEY	12" or Greater	8" or greater	Remove	Rating Code: A = Excellent, B = Good, C = Fair, D = Poor, E = Nearly Dead, F = Dead				
Tree #	Species	Status	DBH (")	Height (')	Spread (')	Summary of Condition	REMOVE	RETAIN
141	Canary Island Pine <i>Pinus canariensis</i>	Non-Protected Significant	22	65	20	C		RETAIN
142	Canary Island Pine <i>Pinus canariensis</i>	Non-Protected	4	12	3	C		RETAIN
143	Canary Island Pine <i>Pinus canariensis</i>	Non-Protected	3	15	3	C		RETAIN
144	Canary Island Pine <i>Pinus canariensis</i>	Non-Protected	3	15	3	C		RETAIN
145	Canary Island Pine <i>Pinus canariensis</i>	Non-Protected	4	40	20	C		RETAIN
146	Coast Redwood <i>Sequoia sempervirens</i>	Non-Protected Significant	17	35	20	C		RETAIN
147	Coast Redwood <i>Sequoia sempervirens</i>	Non-Protected Significant	11	40	20	C		RETAIN
148	Coast Redwood <i>Sequoia sempervirens</i>	Non-Protected Significant	14	40	20	C		RETAIN
149	Melaleuca <i>Melaleuca quinquenervia</i>	Non-Protected	7	30	10	C		RETAIN
150	Sweetgum <i>Liquidambar styraciflua</i>	Non-Protected Significant	9	25	20	C		RETAIN
151	Sweetgum <i>Liquidambar styraciflua</i>	Non-Protected	4	20	8	C		RETAIN
152	Sweetgum <i>Liquidambar styraciflua</i>	Non-Protected	6	30	15	C		RETAIN
153	Canary Island Pine <i>Pinus canariensis</i>	Non-Protected Significant	23	65	30	C		RETAIN
154	Coast Redwood <i>Sequoia sempervirens</i>	Non-Protected Significant	18	55	25	C-D		RETAIN
155	Coast Redwood <i>Sequoia sempervirens</i>	Non-Protected Significant	18	55	25	C-D		RETAIN
156	Coast Redwood <i>Sequoia sempervirens</i>	Non-Protected Significant	11	35	20	C-D		RETAIN
157	Sweetgum <i>Liquidambar styraciflua</i>	Non-Protected	5	25	15	C		RETAIN
158	Sweetgum <i>Liquidambar styraciflua</i>	Non-Protected	6	15	15	C-D		RETAIN
159	Sweetgum <i>Liquidambar styraciflua</i>	Non-Protected	7	30	8	C		RETAIN
160	Sweetgum <i>Liquidambar styraciflua</i>	Non-Protected	6	30	10	C		RETAIN

APPENDIX C - SUMMARY OF FIELD INSPECTION

KEY	12" or Greater	8" or greater	Remove	Rating Code: A = Excellent, B = Good, C = Fair, D = Poor, E = Nearly Dead, F = Dead				
Tree #	Species	Status	DBH (")	Height (')	Spread (')	Summary of Condition	REMOVE	RETAIN
161	Canary Island Pine <i>Pinus canariensis</i>	Non-Protected Significant	13	40	20	C		RETAIN
162	Sweetgum <i>Liquidambar styraciflua</i>	Non-Protected	6	30	15	C		RETAIN
163	Paperbark <i>Melaleuca quinquinervia</i>	Non-Protected Significant	7, 4, 4	30	10	C		RETAIN
164	London Plane <i>Platanus x hispanica</i>	Non-Protected Significant	9	30	25	C		RETAIN
165	Canary Island Pine <i>Pinus canariensis</i>	Non-Protected Significant	16	45	15	C-D		RETAIN
166	London Plane <i>Platanus x hispanica</i>	Non-Protected Significant	12	35	30	C		RETAIN
167	Canary Island Pine <i>Pinus canariensis</i>	Non-Protected Significant	9	40	8	C-D		RETAIN
168	London Plane <i>Platanus x hispanica</i>	Non-Protected Significant	12	40	35	C		RETAIN
169	Camphor <i>Cinnamomum camphora</i>	Non-Protected Significant	9	20	15	C		RETAIN
170	Camphor <i>Cinnamomum camphora</i>	No Existing Tree						
171	London Plane <i>Platanus x hispanica</i>	Non-Protected	7	15	10	C-D		RETAIN
172	London Plane <i>Platanus x hispanica</i>	Non-Protected	7	15	10	C-D		RETAIN
173	London Plane <i>Platanus x hispanica</i>	Non-Protected	6	15	10	C-D		RETAIN
174	London Plane <i>Platanus x hispanica</i>	Non-Protected	5	15	10	C-D		RETAIN
175	London Plane <i>Platanus x hispanica</i>	Non-Protected	6	15	10	C-D		RETAIN
176	London Plane <i>Platanus x hispanica</i>	Non-Protected	6	15	10	C-D		RETAIN
177	London Plane <i>Platanus x hispanica</i>	Non-Protected	6	15	10	C-D		RETAIN
178	London Plane <i>Platanus x hispanica</i>	Non-Protected	7	15	10	C-D		RETAIN
179	London Plane <i>Platanus x hispanica</i>	Non-Protected	7	15	10	C-D		RETAIN
180	Sweetgum <i>Liquidambar styraciflua</i>	No Existing Tree						

APPENDIX C - SUMMARY OF FIELD INSPECTION

KEY	12" or Greater	8" or greater	Remove	Rating Code: A = Excellent, B = Good, C = Fair, D = Poor, E = Nearly Dead, F = Dead				
Tree #	Species	Status	DBH (")	Height (')	Spread (')	Summary of Condition	REMOVE	RETAIN
181	Coast Redwood <i>Sequoia sempervirens</i>	Non-Protected Significant	10	35	15	D		RETAIN
182	Coast Redwood <i>Sequoia sempervirens</i>	Non-Protected Significant	10	35	15	C-D	REMOVE	
183	Coast Redwood <i>Sequoia sempervirens</i>	Non-Protected Significant	10	35	15	D	REMOVE	
184	Coast Redwood <i>Sequoia sempervirens</i>	Non-Protected Significant	11	35	15	D		RETAIN
185	Coast Redwood <i>Sequoia sempervirens</i>	Non-Protected Significant	11	35	15	D		RETAIN
186	Coast Redwood <i>Sequoia sempervirens</i>	Non-Protected Significant	11	35	15	D		RETAIN
187	Coast Redwood <i>Sequoia sempervirens</i>	Non-Protected Significant	12	35	15	D		RETAIN
188	Coast Redwood <i>Sequoia sempervirens</i>	Non-Protected Significant	12	30	15	C-D		RETAIN
189	Coast Redwood <i>Sequoia sempervirens</i>	Non-Protected Significant	12					RETAIN
190	Coast Redwood <i>Sequoia sempervirens</i>	Non-Protected Significant	12	35	15	C-D		RETAIN
191	Coast Redwood <i>Sequoia sempervirens</i>	No Existing Tree						RETAIN
192	Canary Island Pine <i>Pinus canariensis</i>	Non-Protected Significant	13	40	20	C		RETAIN
193	Canary Island Pine <i>Pinus canariensis</i>	Non-Protected Significant	13	40	20	C		RETAIN
194	Canary Island Pine <i>Pinus canariensis</i>	Non-Protected Significant	13	40	20	C		RETAIN
195	Canary Island Pine <i>Pinus canariensis</i>	Non-Protected Significant	14	40	20	C		RETAIN
196	Canary Island Pine <i>Pinus canariensis</i>	Non-Protected Significant	14	40	20	C		RETAIN
197	Canary Island Pine <i>Pinus canariensis</i>	Non-Protected Significant	14	40	20	C		RETAIN
198	Canary Island Pine <i>Pinus canariensis</i>	Non-Protected Significant	15	40	20	C		RETAIN
199	Canary Island Pine <i>Pinus canariensis</i>	Non-Protected Significant	15	40	20	C		RETAIN
200	Canary Island Pine <i>Pinus canariensis</i>	Non-Protected Significant	15	40	20	C		RETAIN

APPENDIX C - SUMMARY OF FIELD INSPECTION

KEY	12" or Greater	8" or greater	Remove	Rating Code: A = Excellent, B = Good, C = Fair, D = Poor, E = Nearly Dead, F = Dead				
Tree #	Species	Status	DBH (")	Height (')	Spread (')	Summary of Condition	REMOVE	RETAIN
201	Sweetgum <i>Liquidambar styraciflua</i>	Non-Protected	6	15	10	C		RETAIN
202	Sweetgum <i>Liquidambar styraciflua</i>	Non-Protected	5	15	10	C		RETAIN
203	Coast Redwood <i>Sequoia sempervirens</i>	No Existing Tree						
204	Coast Redwood <i>Sequoia sempervirens</i>	No Existing Tree						
205	Coast Redwood <i>Sequoia sempervirens</i>	Non-Protected Significant	16	45	15	D		RETAIN
206	Sweetgum <i>Liquidambar styraciflua</i>	Non-Protected	6	15	15	C		RETAIN
207	Sweetgum <i>Liquidambar styraciflua</i>	Non-Protected Significant	8	25	15	C-D		RETAIN
208	Canary Island Pine <i>Pinus canariensis</i>	Non-Protected Significant	22	60	20	C		RETAIN
209	Canary Island Pine <i>Pinus canariensis</i>	Non-Protected Significant	22	60	20	C		RETAIN
210	London Plane <i>Platanus x hispanica</i>	Non-Protected	6	15	8	C-D		RETAIN
211	London Plane <i>Platanus x hispanica</i>	Non-Protected	6	15	8	C-D		RETAIN
212	London Plane <i>Platanus x hispanica</i>	Non-Protected	7	15	8	C-D		RETAIN
213	London Plane <i>Platanus x hispanica</i>	Non-Protected Significant	8	15	8	C-D		RETAIN
214	London Plane <i>Platanus x hispanica</i>	Non-Protected Significant	8	15	8	C-D		RETAIN
215	Camphor <i>Cinnamomum camphora</i>	Non-Protected	3	8	4	D		RETAIN
216	Camphor <i>Cinnamomum camphora</i>	Non-Protected	3	8	4	D		RETAIN
217	Camphor <i>Cinnamomum camphora</i>	Non-Protected	3	8	4	D		RETAIN
218	Camphor <i>Cinnamomum camphora</i>	Non-Protected	3	8	4	D		RETAIN
219	Camphor <i>Cinnamomum camphora</i>	Non-Protected	3	8	4	D		RETAIN
220	Citrus <i>Citrus sp.</i>	No Existing Tree						

APPENDIX C - SUMMARY OF FIELD INSPECTION

KEY	12" or Greater	8" or greater	Remove	Rating Code: A = Excellent, B = Good, C = Fair, D = Poor, E = Nearly Dead, F = Dead				
Tree #	Species	Status	DBH (")	Height (')	Spread (')	Summary of Condition	REMOVE	RETAIN
221	Citrus <i>Citrus sp.</i>	Non-Protected Significant	18	15	15	C		RETAIN
222	Camphor <i>Cinnamomum camphora</i>	Non-Protected Significant	12	20	20	C		RETAIN
223	Camphor <i>Cinnamomum camphora</i>	Non-Protected Significant	13	20	20	C		RETAIN
224	Camphor <i>Cinnamomum camphora</i>	Non-Protected Significant	14	20	20	C		RETAIN
225	Brazilian Pepper <i>Schinus terebinthifolius</i>	Non-Protected Significant	13	20	20	C		RETAIN
226	Brazilian Pepper <i>Schinus terebinthifolius</i>	Non-Protected Significant	17	25	25	C		RETAIN
227	Brazilian Pepper <i>Schinus terebinthifolius</i>	Non-Protected Significant	18	25	25	C		RETAIN
228	Brazilian Pepper <i>Schinus terebinthifolius</i>	Non-Protected Significant	20	25	25	C		RETAIN
229	Brazilian Pepper <i>Schinus terebinthifolius</i>	Non-Protected Significant	22	25	25	C		RETAIN
230	Brazilian Pepper <i>Schinus terebinthifolius</i>	Non-Protected Significant	21	25	25	C		RETAIN
231	Paperbark <i>Melaleuca quinquinervia</i>	Non-Protected Significant	9	15	5	C-D		RETAIN
232	Paperbark <i>Melaleuca quinquinervia</i>	Non-Protected Significant	10	15	5	C-D		RETAIN
233	Paperbark <i>Melaleuca quinquinervia</i>	Non-Protected Significant	13	15	5	C-D		RETAIN
234	Paperbark <i>Melaleuca quinquinervia</i>	Non-Protected Significant	16	15	5	C-D		RETAIN
235	Canary Island Pine <i>Pinus canariensis</i>	Non-Protected Significant	13	70	15	C		RETAIN
236	Canary Island Pine <i>Pinus canariensis</i>	Non-Protected Significant	13	70	15	C		RETAIN
237	Canary Island Pine <i>Pinus canariensis</i>	Non-Protected Significant	13	70	15	C		RETAIN
238	Canary Island Pine <i>Pinus canariensis</i>	Non-Protected Significant	13	70	15	C		RETAIN
239	Canary Island Pine <i>Pinus canariensis</i>	Non-Protected Significant	13	70	15	C		RETAIN
240	Canary Island Pine <i>Pinus canariensis</i>	Non-Protected Significant	13	65	15	C		RETAIN

APPENDIX C - SUMMARY OF FIELD INSPECTION

KEY	12" or Greater	8" or greater	Remove	Rating Code: A = Excellent, B = Good, C = Fair, D = Poor, E = Nearly Dead, F = Dead				
Tree #	Species	Status	DBH (")	Height (')	Spread (')	Summary of Condition	REMOVE	RETAIN
241	Canary Island Pine <i>Pinus canariensis</i>	Non-Protected Significant	17	65	15	C		RETAIN
242	Canary Island Pine <i>Pinus canariensis</i>	Non-Protected Significant	17	65	15	C		RETAIN
243	Canary Island Pine <i>Pinus canariensis</i>	Non-Protected Significant	17	65	15	C		RETAIN
244	Canary Island Pine <i>Pinus canariensis</i>	Non-Protected Significant	17	65	15	C		RETAIN
245	Canary Island Pine <i>Pinus canariensis</i>	Non-Protected Significant	17	65	15	C		RETAIN
246	Canary Island Pine <i>Pinus canariensis</i>	Non-Protected Significant	10	65	15	C		RETAIN
247	Canary Island Pine <i>Pinus canariensis</i>	Non-Protected Significant	10	65	15	C		RETAIN
248	Canary Island Pine <i>Pinus canariensis</i>	Non-Protected Significant	10	65	15	C		RETAIN
249	Canary Island Pine <i>Pinus canariensis</i>	Non-Protected Significant	10	65	15	C		RETAIN
250	Canary Island Pine <i>Pinus canariensis</i>	Non-Protected Significant	17	65	15	C		RETAIN
251	Canary Island Pine <i>Pinus canariensis</i>	Non-Protected Significant	10	65	15	C		RETAIN
252	Canary Island Pine <i>Pinus canariensis</i>	Non-Protected Significant	10	65	15	C		RETAIN
253	Canary Island Pine <i>Pinus canariensis</i>	Non-Protected Significant	10	65	15	C		RETAIN
254	Canary Island Pine <i>Pinus canariensis</i>	Non-Protected Significant	16	65	15	C		RETAIN
255	Canary Island Pine <i>Pinus canariensis</i>	Non-Protected Significant	16	65	15	C		RETAIN
256	Canary Island Pine <i>Pinus canariensis</i>	Non-Protected Significant	17	65	15	C		RETAIN
257	Canary Island Pine <i>Pinus canariensis</i>	Non-Protected Significant	18	65	15	C		RETAIN
258	Canary Island Pine <i>Pinus canariensis</i>	Non-Protected Significant	19	65	15	C		RETAIN
259	Coast Redwood <i>Sequoia sempervirens</i>	Non-Protected Significant	13	65	15	C		RETAIN

APPENDIX C - SUMMARY OF FIELD INSPECTION

KEY	12" or Greater	8" or greater	Remove	Rating Code: A = Excellent, B = Good, C = Fair, D = Poor, E = Nearly Dead, F = Dead				
Tree #	Species	Status	DBH (")	Height (')	Spread (')	Summary of Condition	REMOVE	RETAIN
260	Coast Redwood <i>Sequoia sempervirens</i>	Non-Protected Significant	13	60	20	C		RETAIN
261	Coast Redwood <i>Sequoia sempervirens</i>	Non-Protected Significant	14	60	20	C		RETAIN
262	Canary Island Pine <i>Pinus canariensis</i>	Non-Protected Significant	12	65	15	C		RETAIN
263	Canary Island Pine <i>Pinus canariensis</i>	Non-Protected Significant	12	65	15	C		RETAIN
264	Canary Island Pine <i>Pinus canariensis</i>	Non-Protected Significant	12	65	15	C		RETAIN
265	Canary Island Pine <i>Pinus canariensis</i>	Non-Protected Significant	12	65	15	C		RETAIN
266	Canary Island Pine <i>Pinus canariensis</i>	Non-Protected Significant	18	80	20	C-D		RETAIN
267	Canary Island Pine <i>Pinus canariensis</i>	Non-Protected Significant	18	80	20	C-D		RETAIN
268	Canary Island Pine <i>Pinus canariensis</i>	Non-Protected Significant	20	80	20	C-D		RETAIN
269	Canary Island Pine <i>Pinus canariensis</i>	Non-Protected Significant	16	80	20	C-D		RETAIN
270	Canary Island Pine <i>Pinus canariensis</i>	Non-Protected Significant	13	60	20	C		RETAIN
271	Canary Island Pine <i>Pinus canariensis</i>	Non-Protected	4	25	8	C		RETAIN
272	Canary Island Pine <i>Pinus canariensis</i>	Non-Protected	4	25	8	C		RETAIN
273	Canary Island Pine <i>Pinus canariensis</i>	Non-Protected Significant	16	80	25	C		RETAIN
274	Canary Island Pine <i>Pinus canariensis</i>	Non-Protected Significant	16	80	25	C		RETAIN
275	Canary Island Pine <i>Pinus canariensis</i>	Non-Protected Significant	16	80	25	C		RETAIN
276	Canary Island Pine <i>Pinus canariensis</i>	Non-Protected Significant	16	80	25	C		RETAIN
277	Canary Island Pine <i>Pinus canariensis</i>	Non-Protected Significant	16	80	25	C		RETAIN
278	Canary Island Pine <i>Pinus canariensis</i>	Non-Protected Significant	16	80	25	C		RETAIN
279	Coast Redwood <i>Sequoia sempervirens</i>	Non-Protected Significant	14	60	15	D		RETAIN

APPENDIX C - SUMMARY OF FIELD INSPECTION

KEY	12" or Greater	8" or greater	Remove	Rating Code: A = Excellent, B = Good, C = Fair, D = Poor, E = Nearly Dead, F = Dead				
Tree #	Species	Status	DBH (")	Height (')	Spread (')	Summary of Condition	REMOVE	RETAIN
280	Canary Island Pine <i>Pinus canariensis</i>	Non-Protected	5	15	5	C		RETAIN
281	Canary Island Pine <i>Pinus canariensis</i>	Non-Protected	5	15	5	C		RETAIN
282	Canary Island Pine <i>Pinus canariensis</i>	Non-Protected	5	15	5	C		RETAIN
283	Canary Island Pine <i>Pinus canariensis</i>	Non-Protected	5	15	5	C		RETAIN
284	Canary Island Pine <i>Pinus canariensis</i>	Non-Protected Significant	22	60	20	C		RETAIN
285	Canary Island Pine <i>Pinus canariensis</i>	Non-Protected Significant	22	60	20	C		RETAIN
286	Canary Island Pine <i>Pinus canariensis</i>	Non-Protected Significant	20	60	20	C		RETAIN
287	Canary Island Pine <i>Pinus canariensis</i>	Non-Protected	5	15	8	C		RETAIN
288	Canary Island Pine <i>Pinus canariensis</i>	Non-Protected	5	15	8	C		RETAIN
289	Canary Island Pine <i>Pinus canariensis</i>	Non-Protected Significant	17	60	20	C		RETAIN
290	Canary Island Pine <i>Pinus canariensis</i>	Non-Protected Significant	17	60	20	C		RETAIN
291	Canary Island Pine <i>Pinus canariensis</i>	Non-Protected Significant	17	60	20	C		RETAIN
292	Canary Island Pine <i>Pinus canariensis</i>	Non-Protected Significant	17	60	20	C		RETAIN
293	Canary Island Pine <i>Pinus canariensis</i>	Non-Protected Significant	17	60	20	C		RETAIN
294	Canary Island Pine <i>Pinus canariensis</i>	Non-Protected Significant	17	60	20	C		RETAIN
295	Canary Island Pine <i>Pinus canariensis</i>	Non-Protected Significant	17	60	20	C		RETAIN
296	Canary Island Pine <i>Pinus canariensis</i>	Non-Protected Significant	17	60	20	C		RETAIN
297	Canary Island Pine <i>Pinus canariensis</i>	Non-Protected Significant	17	60	20	C		RETAIN
298	Canary Island Pine <i>Pinus canariensis</i>	Non-Protected Significant	17	60	20	C		RETAIN
299	Canary Island Pine <i>Pinus canariensis</i>	Non-Protected Significant	22	60	20	C		RETAIN

APPENDIX C - SUMMARY OF FIELD INSPECTION

KEY	12" or Greater	8" or greater	Remove	Rating Code: A = Excellent, B = Good, C = Fair, D = Poor, E = Nearly Dead, F = Dead				
Tree #	Species	Status	DBH (")	Height (')	Spread (')	Summary of Condition	REMOVE	RETAIN
300	Canary Island Pine <i>Pinus canariensis</i>	Non-Protected Significant	22	65	20	C		RETAIN
301	Canary Island Pine <i>Pinus canariensis</i>	Non-Protected	5	15	8	C		RETAIN
302	Canary Island Pine <i>Pinus canariensis</i>	Non-Protected	5	15	8	C		RETAIN
303	Canary Island Pine <i>Pinus canariensis</i>	Non-Protected	5	15	8	C		RETAIN
304	Coast Redwood <i>Sequoia sempervirens</i>	Non-Protected	6	15	8	C		RETAIN
305	Coast Redwood <i>Sequoia sempervirens</i>	Non-Protected Significant	8	20	8	C		RETAIN
306	Coast Redwood <i>Sequoia sempervirens</i>	Non-Protected Significant	14	22	10	D		RETAIN
307	Coast Redwood <i>Sequoia sempervirens</i>	Non-Protected Significant	20	35	20	C-D		RETAIN
308	Evergreen Ash <i>Fraxinus uhdei</i>	Non-Protected Significant	25	30	30	C-D		RETAIN
309	Evergreen Ash <i>Fraxinus uhdei</i>	Non-Protected Significant	10	30	20	C		RETAIN
310	Evergreen Ash <i>Fraxinus uhdei</i>	Non-Protected Significant	9	30	20	C		RETAIN
311	Crape Myrtle <i>Lagerstroemia indica</i>	Non-Protected	6	15	15	C		RETAIN
312	Crape Myrtle <i>Lagerstroemia indica</i>	Non-Protected	6	15	15	C		RETAIN
313	Crape Myrtle <i>Lagerstroemia indica</i>	Non-Protected	5	15	10	C		RETAIN
314	Crape Myrtle <i>Lagerstroemia indica</i>	Non-Protected	6	15	10	C		RETAIN
315	Stone Pine <i>Pinus pinea</i>	Non-Protected Significant	43	80	40	C		RETAIN
316	Evergreen Ash <i>Fraxinus uhdei</i>	Non-Protected Significant	16	35	20	C		RETAIN
317	Evergreen Ash <i>Fraxinus uhdei</i>	Non-Protected Significant	12	35	20	C		RETAIN
318	Canary Island Pine <i>Pinus canariensis</i>	Non-Protected Significant	14	50	20	C		RETAIN
319	Evergreen Ash <i>Fraxinus uhdei</i>	Non-Protected Significant	12	35	20	C		RETAIN

APPENDIX C - SUMMARY OF FIELD INSPECTION

KEY	12" or Greater	8" or greater	Remove	Rating Code: A = Excellent, B = Good, C = Fair, D = Poor, E = Nearly Dead, F = Dead				
Tree #	Species	Status	DBH (")	Height (')	Spread (')	Summary of Condition	REMOVE	RETAIN
320	Evergreen Ash <i>Fraxinus uhdei</i>	Non-Protected Significant	12	30	15	C		RETAIN
321	Canary Island Pine <i>Pinus canariensis</i>	Non-Protected Significant	12	30	20	C		RETAIN
322	Canary Island Pine <i>Pinus canariensis</i>	Non-Protected Significant	21	35	20	C		RETAIN
323	Melaleuca <i>Melaleuca quinquenervia</i>	Non-Protected Significant	11	30	15	C		RETAIN
324	Melaleuca <i>Melaleuca quinquenervia</i>	Non-Protected Significant	21	30	15	C		RETAIN
325	Melaleuca <i>Melaleuca quinquenervia</i>	Non-Protected Significant	11, 8	30	15	C		RETAIN
326	Crape Myrtle <i>Lagerstroemia indica</i>	Non-Protected	5	15	12	C		RETAIN
327	Crape Myrtle <i>Lagerstroemia indica</i>	Non-Protected	5	15	12	C		RETAIN
328	Crape Myrtle <i>Lagerstroemia indica</i>	Non-Protected	5	15	12	C		RETAIN
329	Crape Myrtle <i>Lagerstroemia indica</i>	Non-Protected	5	15	12	C		RETAIN
330	Crape Myrtle <i>Lagerstroemia indica</i>	Non-Protected	5	15	12	C		RETAIN
331	Melaleuca <i>Melaleuca quinquenervia</i>	Non-Protected Significant	11	30	10	C-D	REMOVE	
332	Melaleuca <i>Melaleuca quinquenervia</i>	Non-Protected Significant	8	20	10	C-D		RETAIN
333	Melaleuca <i>Melaleuca quinquenervia</i>	Non-Protected Significant	10	25	10	C		RETAIN
334	Crape Myrtle <i>Lagerstroemia indica</i>	Non-Protected	5	10	6	C		RETAIN
335	Crape Myrtle <i>Lagerstroemia indica</i>	Non-Protected	4	10	6	C		RETAIN
336	Crape Myrtle <i>Lagerstroemia indica</i>	Non-Protected	3	10	6	C		RETAIN
337	Crape Myrtle <i>Lagerstroemia indica</i>	Non-Protected	4	10	6	C		RETAIN
338	Desert Museum Palo Verde <i>Parkinsonia</i> x 'Desert Museum'	Non-Protected Significant	15	20	20	C		RETAIN
339	Canary Island Pine <i>Pinus canariensis</i>	Non-Protected Significant	22	40	15	C		RETAIN

APPENDIX C - SUMMARY OF FIELD INSPECTION

KEY	12" or Greater	8" or greater	Remove	Rating Code: A = Excellent, B = Good, C = Fair, D = Poor, E = Nearly Dead, F = Dead				
Tree #	Species	Status	DBH (")	Height (')	Spread (')	Summary of Condition	REMOVE	RETAIN
340	Canary Island Pine <i>Pinus canariensis</i>	Non-Protected Significant	25	40	15	C		RETAIN
341	Canary Island Pine <i>Pinus canariensis</i>	Non-Protected Significant	18	40	15	C		RETAIN
342	Canary Island Pine <i>Pinus canariensis</i>	Non-Protected Significant	14	40	15	C		RETAIN
343	Canary Island Pine <i>Pinus canariensis</i>	Non-Protected Significant	12	40	15	C		RETAIN
344	Canary Island Pine <i>Pinus canariensis</i>	Non-Protected Significant	10	40	15	C		RETAIN
345	Canary Island Pine <i>Pinus canariensis</i>	Non-Protected Significant	23	40	15	C		RETAIN
346	Canary Island Pine <i>Pinus canariensis</i>	Non-Protected Significant	18	40	15	C		RETAIN
347	Canary Island Pine <i>Pinus canariensis</i>	Non-Protected Significant	19	40	15	C		RETAIN
348	Canary Island Pine <i>Pinus canariensis</i>	Non-Protected Significant	19	40	15	C		RETAIN
349	Canary Island Pine <i>Pinus canariensis</i>	Non-Protected Significant	21	45	20	C		RETAIN
350	Canary Island Pine <i>Pinus canariensis</i>	Non-Protected Significant	20	45	20	C		RETAIN
351	Canary Island Pine <i>Pinus canariensis</i>	Non-Protected Significant	27	55	30	C		RETAIN
352	Coast Redwood <i>Sequoia sempervirens</i>	Non-Protected Significant	24	50	25	E		RETAIN
353	Canary Island Pine <i>Pinus canariensis</i>	Non-Protected Significant	22	65	20	C		RETAIN
354	Canary Island Pine <i>Pinus canariensis</i>	Non-Protected Significant	18	55	20	C		RETAIN
355	Canary Island Pine <i>Pinus canariensis</i>	Non-Protected Significant	18	60	20	C		RETAIN
356	Coast Redwood <i>Sequoia sempervirens</i>	Non-Protected Significant	16	50	20	D		RETAIN
357	Coast Redwood <i>Sequoia sempervirens</i>	Non-Protected Significant	11	45	15	E		RETAIN
358	Coast Redwood <i>Sequoia sempervirens</i>	Non-Protected Significant	16	45	20	D		RETAIN
359	Coast Redwood <i>Sequoia sempervirens</i>	Non-Protected Significant	23	45	20	D		RETAIN

APPENDIX C - SUMMARY OF FIELD INSPECTION

KEY	12" or Greater	8" or greater	Remove	Rating Code: A = Excellent, B = Good, C = Fair, D = Poor, E = Nearly Dead, F = Dead				
Tree #	Species	Status	DBH (")	Height (')	Spread (')	Summary of Condition	REMOVE	RETAIN
360	Canary Island Pine <i>Pinus canariensis</i>	Non-Protected Significant	29	65	25	C		RETAIN
361	Canary Island Pine <i>Pinus canariensis</i>	Non-Protected Significant	29	65	25	C		RETAIN
362	Canary Island Pine <i>Pinus canariensis</i>	Non-Protected Significant	22	60	25	C		RETAIN
363	Coast Redwood <i>Sequoia sempervirens</i>	Non-Protected Significant	20	45	20	C		RETAIN
364	Coast Redwood <i>Sequoia sempervirens</i>	Non-Protected Significant	14	45	20	C		RETAIN
365	Coast Redwood <i>Sequoia sempervirens</i>	Non-Protected Significant	14	45	20	C		RETAIN
366	Coast Redwood <i>Sequoia sempervirens</i>	Non-Protected Significant	10, 10, 6	45	20	C		RETAIN
367	Coast Redwood <i>Sequoia sempervirens</i>	Non-Protected Significant	18	45	20	C		RETAIN
368	Gold Medallion <i>Cassia leptophylla</i>	Non-Protected	6	8	8	D		RETAIN
369	Gold Medallion <i>Cassia leptophylla</i>	Non-Protected	4	8	8	D		RETAIN
370	Gold Medallion <i>Cassia leptophylla</i>	Non-Protected	4	8	8	D		RETAIN
371	Gold Medallion <i>Cassia leptophylla</i>	Non-Protected	7	8	8	D		RETAIN
372	Coast Redwood <i>Sequoia sempervirens</i>	Non-Protected Significant	25	40	25	D		RETAIN
373	Coast Redwood <i>Sequoia sempervirens</i>	Non-Protected Significant	25	40	20	D		RETAIN
374	Coast Redwood <i>Sequoia sempervirens</i>	Non-Protected Significant	25	35	20	D		RETAIN
375	Crape Myrtle <i>Lagerstroemia indica</i>	Non-Protected	5	8	4	C		RETAIN
376	London Plane <i>Platanus x hispanica</i>	Non-Protected	5	15	12	C-D		RETAIN
377	London Plane <i>Platanus x hispanica</i>	Non-Protected	6	18	15	C-D		RETAIN
378	London Plane <i>Platanus x hispanica</i>	Non-Protected	5	15	10	C-D		RETAIN
379	London Plane <i>Platanus x hispanica</i>	Non-Protected	5	15	10	C-D		RETAIN

APPENDIX C - SUMMARY OF FIELD INSPECTION

KEY	12" or Greater	8" or greater	Remove	Rating Code: A = Excellent, B = Good, C = Fair, D = Poor, E = Nearly Dead, F = Dead				
Tree #	Species	Status	DBH (")	Height (')	Spread (')	Summary of Condition	REMOVE	RETAIN
380	London Plane <i>Platanus x hispanica</i>	Non-Protected	6	15	10	C-D		RETAIN
381	London Plane <i>Platanus x hispanica</i>	Non-Protected	4	25	15	C-D		RETAIN
382	London Plane <i>Platanus x hispanica</i>	Non-Protected	5	15	10	C-D		RETAIN
383	London Plane <i>Platanus x hispanica</i>	Non-Protected	4	15	8	C-D		RETAIN
384	London Plane <i>Platanus x hispanica</i>	Non-Protected	6	20	12	C-D		RETAIN
385	London Plane <i>Platanus x hispanica</i>	Non-Protected	6	15	10	C-D		RETAIN
386	London Plane <i>Platanus x hispanica</i>	Non-Protected	4	15	10	C-D		RETAIN
387	London Plane <i>Platanus x hispanica</i>	Non-Protected	4	15	10	C-D		RETAIN
388	London Plane <i>Platanus x hispanica</i>	Non-Protected	4	15	10	C-D		RETAIN
389	Crape Myrtle <i>Lagerstroemia indica</i>	Non-Protected	4	10	5	C	REMOVE	
390	Crape Myrtle <i>Lagerstroemia indica</i>	Non-Protected	4	10	5	C	REMOVE	
391	Juniper <i>Juniperus chinensis</i>	Non-Protected Significant	31	30	30	C		RETAIN
392	Juniper <i>Juniperus chinensis</i>	Non-Protected Significant	23	25	25	C		RETAIN
393	Juniper <i>Juniperus chinensis</i>	Non-Protected Significant	20	25	20	C		RETAIN
394	Juniper <i>Juniperus chinensis</i>	Non-Protected Significant	24	25	30	C		RETAIN
395	Crape Myrtle <i>Lagerstroemia indica</i>	Non-Protected	3	10	5	C		RETAIN
396	Crape Myrtle <i>Lagerstroemia indica</i>	Non-Protected	3	10	5	C		RETAIN
397	Crape Myrtle <i>Lagerstroemia indica</i>	Non-Protected	6	15	15	C		RETAIN
398	Crape Myrtle <i>Lagerstroemia indica</i>	Non-Protected	5	15	15	C		RETAIN
399	Coast Redwood <i>Sequoia sempervirens</i>	Non-Protected Significant	22	50	20	D		RETAIN

APPENDIX C - SUMMARY OF FIELD INSPECTION

KEY	12" or Greater	8" or greater	Remove	Rating Code: A = Excellent, B = Good, C = Fair, D = Poor, E = Nearly Dead, F = Dead				
Tree #	Species	Status	DBH (")	Height (')	Spread (')	Summary of Condition	REMOVE	RETAIN
400	Coast Redwood <i>Sequoia sempervirens</i>	Non-Protected Significant	16	40	20	D		RETAIN
401	Coast Redwood <i>Sequoia sempervirens</i>	Non-Protected Significant	20	50	20	D		RETAIN
402	Sweetgum <i>Liquidambar styraciflua</i>	Non-Protected Significant	13	50	15	C-D		RETAIN
403	Canary Island Pine <i>Pinus canariensis</i>	Non-Protected Significant	20	60	20	C		RETAIN
404	Canary Island Pine <i>Pinus canariensis</i>	Non-Protected Significant	12	60	20	C		RETAIN
405	Canary Island Pine <i>Pinus canariensis</i>	Non-Protected Significant	13	60	20	C		RETAIN
406	Canary Island Pine <i>Pinus canariensis</i>	Non-Protected Significant	13	60	20	C		RETAIN
407	Canary Island Pine <i>Pinus canariensis</i>	Non-Protected Significant	18	60	20	C		RETAIN
408	Sweetgum <i>Liquidambar styraciflua</i>	Non-Protected	7	30	12	C		RETAIN
409	Sweetgum <i>Liquidambar styraciflua</i>	Non-Protected Significant	8	45	12	C		RETAIN
410	Sweetgum <i>Liquidambar styraciflua</i>	Non-Protected Significant	13	45	25	D		RETAIN
411	Coast Redwood <i>Sequoia sempervirens</i>	Non-Protected Significant	24	60	25	C-D		RETAIN
412	Coast Redwood <i>Sequoia sempervirens</i>	Non-Protected Significant	13	45	25	C-D		RETAIN
413	Coast Redwood <i>Sequoia sempervirens</i>	Non-Protected Significant	16	45	25	C-D		RETAIN
414	Coast Redwood <i>Sequoia sempervirens</i>	Non-Protected Significant	18	45	25	C-D		RETAIN
415	Coast Redwood <i>Sequoia sempervirens</i>	Non-Protected Significant	25	50	25	C-D		RETAIN
416	Canary Island Pine <i>Pinus canariensis</i>	Non-Protected Significant	10	30	15	C-D		RETAIN
416A	Canary Island Pine <i>Pinus canariensis</i>	Non-Protected Significant	23	50	30	C		RETAIN
417	Coast Redwood <i>Sequoia sempervirens</i>	Non-Protected Significant	22	50	25	C		RETAIN
418	Canary Island Pine <i>Pinus canariensis</i>	Non-Protected Significant	12	30	12	C		RETAIN
419	Canary Island Pine <i>Pinus canariensis</i>	Non-Protected Significant	16	40	15	C		RETAIN

APPENDIX C - SUMMARY OF FIELD INSPECTION

KEY	12" or Greater	8" or greater	Remove	Rating Code: A = Excellent, B = Good, C = Fair, D = Poor, E = Nearly Dead, F = Dead				
Tree #	Species	Status	DBH (")	Height (')	Spread (')	Summary of Condition	REMOVE	RETAIN
420	Canary Island Pine <i>Pinus canariensis</i>	Non-Protected Significant	20	50	20	C		RETAIN
421	Coast Redwood <i>Sequoia sempervirens</i>	Non-Protected Significant	14	35	20	C-D		RETAIN
422	Coast Redwood <i>Sequoia sempervirens</i>	Non-Protected Significant	18	45	20	C-D		RETAIN
423	Coast Redwood <i>Sequoia sempervirens</i>	Non-Protected Significant	16	45	20	C-D		RETAIN
424	Coast Redwood <i>Sequoia sempervirens</i>	Non-Protected Significant	20	45	20	C-D		RETAIN
425	Coast Redwood <i>Sequoia sempervirens</i>	Non-Protected Significant	22	50	25	C-D		RETAIN
426	Japanese Zelkova <i>Zelkova serrata</i>	Non-Protected Significant	17	35	35	C-D		RETAIN
427	Canary Island Pine <i>Pinus canariensis</i>	Non-Protected Significant	14	55	20	C		RETAIN
428	Coast Redwood <i>Sequoia sempervirens</i>	Non-Protected Significant	12	55	20	C		RETAIN
429	Coast Redwood <i>Sequoia sempervirens</i>	Non-Protected Significant	11	55	20	C		RETAIN
430	Coast Redwood <i>Sequoia sempervirens</i>	Non-Protected Significant	13	55	20	C		RETAIN
431	Canary Island Pine <i>Pinus canariensis</i>	Non-Protected Significant	14	55	20	C		RETAIN
432	Canary Island Pine <i>Pinus canariensis</i>	Non-Protected Significant	10	55	20	C		RETAIN
433	Canary Island Pine <i>Pinus canariensis</i>	Non-Protected Significant	12	55	20	C		RETAIN
434	Coast Redwood <i>Sequoia sempervirens</i>	Non-Protected Significant	23	45	25	C-D		RETAIN
435	Coast Redwood <i>Sequoia sempervirens</i>	Non-Protected Significant	17	55	25	C-D		RETAIN
436	Coast Redwood <i>Sequoia sempervirens</i>	Non-Protected Significant	14	45	20	C-D		RETAIN
437	Carob <i>Ceratonia siliqua</i>	Non-Protected Significant	35	30	30	C		RETAIN
438	Sweetgum <i>Liquidambar styraciflua</i>	Non-Protected Significant	12	35	15	C-D		RETAIN
439	Sweetgum <i>Liquidambar styraciflua</i>	Non-Protected Significant	12	40	15	C-D		RETAIN

APPENDIX C - SUMMARY OF FIELD INSPECTION

KEY	12" or Greater	8" or greater	Remove	Rating Code: A = Excellent, B = Good, C = Fair, D = Poor, E = Nearly Dead, F = Dead				
Tree #	Species	Status	DBH (")	Height (')	Spread (')	Summary of Condition	REMOVE	RETAIN
440	Sweetgum <i>Liquidambar styraciflua</i>	Non-Protected Significant	19	45	15	C-D		RETAIN
441	Sweetgum <i>Liquidambar styraciflua</i>	Non-Protected Significant	10	35	10	D		RETAIN
442	Deodar Cedar <i>Cedrus deodara</i>	Non-Protected Significant	23	40	35	C-D		RETAIN
443	Crape Myrtle <i>Lagerstroemia indica</i>	Non-Protected	6	12	6	C		RETAIN
444	Southern Magnolia <i>Magnolia grandiflora</i>	Non-Protected Significant	22	40	25	C		RETAIN
445	Olive <i>Olea europaea</i>	Non-Protected Significant	20, 20, 18	35	30	C		RETAIN
446	Citrus <i>Citrus sp.</i>	Non-Protected Significant	10	10	10	C		RETAIN
447	Citrus <i>Citrus sp.</i>	Non-Protected Significant	8	8	8	C		RETAIN
448	Juniper <i>Juniperus chinensis</i>	Non-Protected Significant	30	25	30	C		RETAIN
449	Redwood <i>Sequoia sempervirens</i>	Non-Protected Significant	38	45	25	C-D		RETAIN
450	Sweetgum <i>Liquidambar styraciflua</i>	Non-Protected Significant	14	25	15	C-D		RETAIN
451	Juniper <i>Juniperus chinensis</i>	Non-Protected Significant	30	30	30	C		RETAIN
452	Desert Museum Palo Verde <i>Parkinsonia x 'Desert Museum'</i>	Non-Protected Significant	22	30	25	D	REMOVE	
453	Mexican Fan Palm <i>Washingtonia robusta</i>	Non-Protected Significant	18	55	10	C	REMOVE	
454	Mexican Fan Palm <i>Washingtonia robusta</i>	Non-Protected Significant	18	60	10	C	REMOVE	
455	Mexican Fan Palm <i>Washingtonia robusta</i>	Non-Protected Significant	18	60	10	C	REMOVE	
456	Mexican Fan Palm <i>Washingtonia robusta</i>	Non-Protected Significant	18	60	10	C	REMOVE	
457	Mexican Fan Palm <i>Washingtonia robusta</i>	Non-Protected Significant	18	55	10	C	REMOVE	
458	Carolina Cherry <i>Prunus caroliniana</i>	Non-Protected	7	15	12	C-D	REMOVE	
459	Desert Museum Palo Verde <i>Parkinsonia x 'Desert Museum'</i>	Non-Protected	7	14	15	C-D		RETAIN

APPENDIX C - SUMMARY OF FIELD INSPECTION

KEY	12" or Greater	8" or greater	Remove	Rating Code: A = Excellent, B = Good, C = Fair, D = Poor, E = Nearly Dead, F = Dead				
Tree #	Species	Status	DBH (")	Height (')	Spread (')	Summary of Condition	REMOVE	RETAIN
460	Crape Myrtle <i>Lagerstroemia indica</i>	Non-Protected Significant	Multi- 8" +	12	10	C	REMOVE	
461	Crape Myrtle <i>Lagerstroemia indica</i>	Non-Protected Significant	Multi- 8" +	12	8	C	REMOVE	
462	Crape Myrtle <i>Lagerstroemia indica</i>	Non-Protected Significant	Multi- 8" +	12	15	C	REMOVE	
463	Crape Myrtle <i>Lagerstroemia indica</i>	Non-Protected Significant	Multi- 8" +	15	15	C	REMOVE	
464	Crape Myrtle <i>Lagerstroemia indica</i>	Non-Protected Significant	Multi - 12" +	15	15	C	REMOVE	
465	Evergreen Ash <i>Fraxinus uhdei</i>	Non-Protected Significant	24	35	30	D	REMOVE	
466	Evergreen Ash <i>Fraxinus uhdei</i>	Non-Protected Significant	17	30	30	D	REMOVE	
467	Evergreen Ash <i>Fraxinus uhdei</i>	Non-Protected Significant	20, 22	35	35	D		RETAIN
468	Juniper <i>Juniperus chinensis</i>	Non-Protected Significant	30	30	25	C		RETAIN
469	Redwood <i>Sequoia sempervirens</i>	Non-Protected Significant	24	60	25	C-D		RETAIN
470	Redwood <i>Sequoia sempervirens</i>	Non-Protected Significant	14	55	20	C-D		RETAIN
471	Canary Island Pine <i>Pinus canariensis</i>	Non-Protected Significant	18	60	25	C		RETAIN
472	Canary Island Pine <i>Pinus canariensis</i>	Non-Protected Significant	18	60	25	C		RETAIN
473	Crape Myrtle <i>Lagerstroemia indica</i>	Non-Protected	5				REMOVE	
474	Raywood Ash <i>Fraxinus oxycarpa</i> 'Raywood'	Non-Protected Significant	18	25	25	C-D		RETAIN
475	Raywood Ash <i>Fraxinus oxycarpa</i> 'Raywood'	Non-Protected Significant	20	25	20	C-D		RETAIN
476	Raywood Ash <i>Fraxinus oxycarpa</i> 'Raywood'	Non-Protected Significant	24	25	25	D		RETAIN
477	Raywood Ash <i>Fraxinus oxycarpa</i> 'Raywood'	Non-Protected Significant	22	25	25	C-D		RETAIN
478	Raywood Ash GONE <i>Fraxinus oxycarpa</i> 'Raywood'	No Existing Tree						
479	Raywood Ash <i>Fraxinus oxycarpa</i> 'Raywood'	Non-Protected Significant	16	20	15	D		RETAIN

APPENDIX C - SUMMARY OF FIELD INSPECTION

KEY	12" or Greater	8" or greater	Remove	Rating Code: A = Excellent, B = Good, C = Fair, D = Poor, E = Nearly Dead, F = Dead				
Tree #	Species	Status	DBH (")	Height (')	Spread (')	Summary of Condition	REMOVE	RETAIN
480	Raywood Ash <i>Fraxinus oxycarpa</i> 'Raywood'	Non-Protected Significant	22	25	25	C-D		RETAIN
481	Raywood Ash <i>Fraxinus oxycarpa</i> 'Raywood'	Non-Protected Significant	20	25	25	C-D		RETAIN
482	Raywood Ash <i>Fraxinus oxycarpa</i> 'Raywood'	Non-Protected Significant	20	25	25	D		RETAIN
483	Raywood Ash <i>Fraxinus oxycarpa</i> 'Raywood'	Non-Protected Significant	24	30	30	C-D		RETAIN
ST484	Pink Dawn <i>Chitalpa tashkentensis</i>	Saticoy St. Street Tree	8	20	10	C		RETAIN
ST485	Pink Dawn <i>Chitalpa tashkentensis</i>	Saticoy St. Street Tree	8	15	6	C-D		RETAIN
ST486	Pink Dawn <i>Chitalpa tashkentensis</i>	Saticoy St. Street Tree	11	20	15	C-D		RETAIN
ST487	Pink Dawn <i>Chitalpa tashkentensis</i>	Saticoy St. Street Tree	11	22	15	C		RETAIN
ST488	Pink Dawn <i>Chitalpa tashkentensis</i>	Saticoy St. Street Tree	11	20	15	C		RETAIN
ST489	Pink Dawn <i>Chitalpa tashkentensis</i>	Saticoy St. Street Tree	11	20	15	C	REMOVE	
ST490	Pink Dawn <i>Chitalpa tashkentensis</i>	Saticoy St. Street Tree	10	20	15	C		RETAIN
ST491	Pink Dawn <i>Chitalpa tashkentensis</i>	Saticoy St. Street Tree	10	20	10	C-D		RETAIN
ST492	Pink Dawn <i>Chitalpa tashkentensis</i>	Saticoy St. Street Tree	11	20	15	C-D		RETAIN
ST493	Pink Dawn <i>Chitalpa tashkentensis</i>	Saticoy St. Street Tree	5	12	10	C-D		RETAIN
ST494	Pink Dawn <i>Chitalpa tashkentensis</i>	Saticoy St. Street Tree	12	20	12	C-D		RETAIN
ST495	Pink Dawn <i>Chitalpa tashkentensis</i>	Saticoy St. Street Tree	10	18	15	C-D		RETAIN
ST496	Pink Dawn <i>Chitalpa tashkentensis</i>	Saticoy St. Street Tree	12	20	20	C-D		RETAIN

APPENDIX C - SUMMARY OF FIELD INSPECTION

Rating Code: A = Excellent, B = Good, C = Fair, D = Poor, E = Nearly Dead, F = Dead

Tree #	Species	Status	DBH (")	Height (')	Spread (')	Summary of Condition	REMOVE	RETAIN
ST497	Crape Myrtle <i>Lagerstroemia indica</i>	Saticoy St. Street Tree	6	15	12	C		RETAIN
ST498	Crape Myrtle <i>Lagerstroemia indica</i>	Saticoy St. Street Tree	7	14	12	C		RETAIN
ST499	Crape Myrtle <i>Lagerstroemia indica</i>	Saticoy St. Street Tree	12@1	15	15	C		RETAIN
ST500	Pink Dawn <i>Chitalpa tashkentensis</i>	Cohasset St. Street Tree	6	12	12	C		RETAIN
ST501	Pink Dawn <i>Chitalpa tashkentensis</i>	Cohasset St. Street Tree	6	12	12	C		RETAIN
ST502	Pink Dawn <i>Chitalpa tashkentensis</i>	Cohasset St. Street Tree	6	12	12	C		RETAIN
ST503	Pink Dawn <i>Chitalpa tashkentensis</i>	Cohasset St. Street Tree	6	12	12	C		RETAIN
ST504	Pink Dawn <i>Chitalpa tashkentensis</i>	Cohasset St. Street Tree	6	12	12	C		RETAIN
ST505	Pink Dawn <i>Chitalpa tashkentensis</i>	Cohasset St. Street Tree	6	12	12	C		RETAIN
ST506	Pink Dawn <i>Chitalpa tashkentensis</i>	Cohasset St. Street Tree	6	12	12	C		RETAIN
ST507	Pink Dawn <i>Chitalpa tashkentensis</i>	Cohasset St. Street Tree	6	12	12	C		RETAIN
ST508	Pink Dawn <i>Chitalpa tashkentensis</i>	Cohasset St. Street Tree	6	12	12	C		RETAIN
ST509	Pink Dawn <i>Chitalpa tashkentensis</i>	Cohasset St. Street Tree	6	12	12	C		RETAIN
ST510	Pink Dawn <i>Chitalpa tashkentensis</i>	Cohasset St. Street Tree	6	12	12	C		RETAIN
ST511	Pink Dawn <i>Chitalpa tashkentensis</i>	Cohasset St. Street Tree	6	12	12	C		RETAIN
ST512	Pink Dawn <i>Chitalpa tashkentensis</i>	Cohasset St. Street Tree	6	12	12	C		RETAIN
ST513	African Sumac <i>Rhus lancea</i>	Keswick Street Tree	7	18	15	C		RETAIN
ST514	African Sumac <i>Rhus lancea</i>	Keswick Street Tree	8	20	20	C		RETAIN
ST515	Bradford Pear <i>Pyrus calleryana</i>	Keswick Street Tree	12	20	20	C-D		RETAIN
ST516	Evergreen Pear <i>Pyrus kawakamii</i>	Keswick Street Tree	10	20	20	C-D		RETAIN
TOTAL TREES are 517 - Note - Tree #416A is a missed tree on original survey and is added after tree #416								

APPENDIX D - SUMMARY OF DATA

Summary of Data

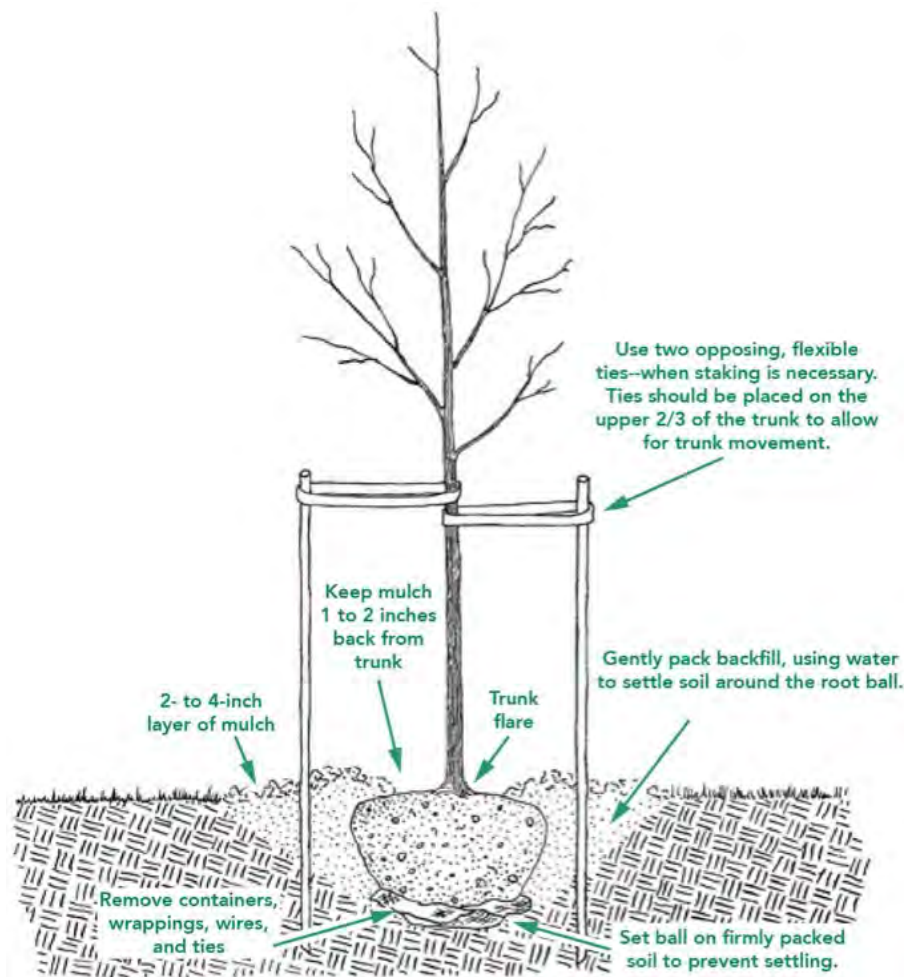
	TOTAL	TOTAL FOR REMOVAL	TOTAL TO BE RETAINED	Trees to be Planted in Replacement
Non-Protected Significant Trees 8" or Greater (Less than 12")	54	10	44	10
Non-Protected Significant Trees 12" or Greater	310	30	280	30
Non-Protected Trees LESS than 8"	108	7	101	0
Street Trees	33	1	32	2
Not existing trees - place holder # (grey circle on map)	12	0	0	0
Totals	517	48	457	42

Recommended Species and Size of Replacement Trees

Non-Protected Significant trees will be replaced at a one-to-one (1:1) ratio, to the satisfaction of the City of Los Angeles Department of City Planning.

Street trees to be replaced at a 2:1 ratio to the satisfaction of the Urban Forestry Department.

NEW TREE PLANTING



The ideal time to plant trees and shrubs is during the dormant season, in the fall after leaf drop or early spring before budbreak. Weather conditions are cool and allow plants to establish roots in the new location before spring rains and summer heat stimulate new top growth. Before you begin planting your tree, be sure you have had all underground utilities located prior to digging.

If the tree you are planting is balled or bare root, it is important to understand that its root system has been reduced by 90 to 95 percent of its original size during transplanting. As a result of the trauma caused by the digging process, trees commonly exhibit what is known as transplant shock. Containerized trees may also experience transplant shock, particularly if they have circling roots that must be cut. Transplant shock is indicated by slow growth and reduced vigor following transplanting. Proper site preparation before and during planting coupled with good follow-up care reduces the amount of time the plant experiences transplant shock and allows the tree to quickly establish in its new location. Carefully follow nine simple steps, and you can significantly reduce the stress placed on the plant at the time of planting.

NEW TREE PLANTING, continued

- 1. Dig a shallow, broad planting hole.** Make the hole wide, as much as three times the diameter of the root ball but only as deep as the root ball. It is important to make the hole wide because the roots on the newly establishing tree must push through surrounding soil in order to establish. On most planting sites in new developments, the existing soils have been compacted and are unsuitable for healthy root growth. Breaking up the soil in a large area around the tree provides the newly emerging roots room to expand into loose soil to hasten establishment.
- 2. Identify the trunk flare.** The trunk flare is where the roots spread at the base of the tree. This point should be partially visible after the tree has been planted (see diagram). If the trunk flare is not partially visible, you may have to remove some soil from the top of the root ball. Find it so you can determine how deep the hole needs for proper planting.
- 3. Remove tree container for containerized trees.** Carefully cutting down the sides of the container may make this easier. Inspect the root ball for circling roots and cut or remove them. Expose the trunk flare, if necessary.
- 4. Place the tree at the proper height.** Before placing the tree in the hole, check to see that the hole has been dug to the proper depth and no more. The majority of the roots on the newly planted tree will develop in the top 12 inches of soil. If the tree is planted too deeply, new roots will have difficulty developing because of a lack of oxygen. It is better to plant the tree a little high, 1-2 inches above the base of the trunk flare, than to plant it at or below the original growing level. This planting level will allow for some settling.
- 5. Straighten the tree in the hole.** Before you begin backfilling, have someone view the tree from several directions to confirm that the tree is straight. Once you begin backfilling, it is difficult to reposition the tree.
- 6. Fill the hole gently but firmly.** Fill the hole about one-third full and gently but firmly pack the soil around the base of the root ball. Be careful not to damage the trunk or roots in the process. Fill the remainder of the hole, taking care to firmly pack soil to eliminate air pockets that may cause roots to dry out. To avoid this problem, add the soil a few inches at a time and settle with water. Continue this process until the hole is filled and the tree is firmly planted. It is not recommended to apply fertilizer at time of planting.
- 7. Stake the tree, if necessary.** If the tree is grown properly at the nursery, staking for support will not be necessary in most home landscape situations. Studies have shown that trees establish more quickly and develop stronger trunk and root systems if they are not staked at the time of planting. However, protective staking may be required on sites where lawn mower damage, vandalism, or windy conditions are concerns. If staking is necessary for support, there are three methods to choose among: staking, guying, and ball stabilizing. One of the most common methods is staking. With this method, two stakes used in conjunction with a wide, flexible tie material on the lower half of the tree will hold the tree upright, provide flexibility, and minimize injury to the trunk (see diagram). Remove support staking and ties after the first year of growth.
- 8. Mulch the base of the tree.** Mulch is simply organic matter applied to the area at the base of the tree. It acts as a blanket to hold moisture, it moderates soil temperature extremes, and it reduces competition from grass and weeds. A 2- to 3-inch layer is ideal. More than 3 inches may cause a problem with oxygen and moisture levels. When placing mulch, be sure that the actual trunk of the tree is not covered. Doing so may cause decay of the living bark at the base of the tree. A mulch-free area, 1 to 2 inches wide at the base of the tree, is sufficient to avoid moist bark conditions and prevent decay.

TREE MAINTENANCE AND PRUNING

Some trees do not generally require pruning. The occasional removal of dead twigs or wood is typical. Occasionally a tree has a defect or structural condition that would benefit from pruning. Any pruning activity should be performed under the guidance of a certified arborist or tree expert.

Because each cut has the potential to change the growth of the tree, no branch should be removed without a reason. Common reasons for pruning are to remove dead branches, to remove crowded or rubbing limbs, and to eliminate hazards. Trees may also be pruned to increase light and air penetration to the inside of the tree's crown or to the landscape below. In most cases, mature trees are pruned as a corrective or preventive measure.

Routine thinning does not necessarily improve the health of a tree. Trees produce a dense crown of leaves to manufacture the sugar used as energy for growth and development. Removal of foliage through pruning can reduce growth and stored energy reserves. Heavy pruning can be a significant health stress for the tree.

Yet if people and trees are to coexist in an urban or suburban environment, then we sometimes have to modify the trees. City environments do not mimic natural forest conditions. Safety is a major concern. Also, we want trees to complement other landscape plantings and lawns. Proper pruning, with an understanding of tree biology, can maintain good tree health and structure while enhancing the aesthetic and economic values of our landscapes.

Pruning Techniques – From the I.S.A. Guideline

Specific types of pruning may be necessary to maintain a mature tree in a healthy, safe, and attractive condition.

Cleaning is the removal of dead, dying, diseased, crowded, weakly attached, and low- vigor branches from the crown of a tree.

Thinning is the selective removal of branches to increase light penetration and air movement through the crown. Thinning opens the foliage of a tree, reduces weight on heavy limbs, and helps retain the tree's natural shape.

Raising removes the lower branches from a tree to provide clearance for buildings, vehicles, pedestrians, and vistas.

Reduction reduces the size of a tree, often for clearance for utility lines. Reducing the height or spread of a tree is best accomplished by pruning back the leaders and branch terminals to lateral branches that are large enough to assume the terminal roles (at least one-third the diameter of the cut stem). Compared to topping, reduction helps maintain the form and structural integrity of the tree.

TREE MAINTENANCE AND PRUNING, continued

How Much Should Be Pruned?

Mature trees should require little routine pruning. A widely accepted rule of thumb is never to remove more than one-quarter of a tree's leaf-bearing crown. In a mature tree, pruning even that much could have negative effects. Removing even a single, large- diameter limb can create a wound that the tree may not be able to close. The older and larger a tree becomes, the less energy it has in reserve to close wounds and defend against decay or insect attack. Pruning of mature trees is usually limited to removal of dead or potentially hazardous limbs.

Wound Dressings

Wound dressings were once thought to accelerate wound closure, protect against insects and diseases, and reduce decay. However, research has shown that dressings do not reduce decay or speed closure and rarely prevent insect or disease infestations. Most experts recommend that wound dressings not be used.

DISEASES AND INSECTS

Continual observation and monitoring of your tree can alert you to any abnormal changes. Some indicators are: excessive leaf drop, leaf discoloration, sap oozing from the trunk and bark with unusual cracks. Should you observe any changes, you should contact a Tree specialist or Certified Arborist to review the tree and provide specific recommendations. Trees are susceptible to hundreds of pests, many of which are typical and may not cause enough harm to warrant the use of chemicals. However, diseases and insects may be indication of further stress that should be identified by a professional.

GRADE CHANGES

The growing conditions and soil level of trees are subject to detrimental stress should they be changed during the course of construction. Raising the grade at the base of a tree trunk can have long-term negative consequences. This grade level should be maintained throughout the protected zone. This will also help in maintaining the drainage in which the tree has become accustomed.

INSPECTION

The property owner should establish an inspection calendar based on the recommendation provided by the tree specialist. This calendar of inspections can be determined based on several factors: the maturity of the tree, location of tree in proximity to high-use areas vs. low-use area, history of the tree, prior failures, external factors (such as construction activity) and the perceived value of the tree to the homeowner.

Assumptions and Limiting Conditions

No warranty is made, expressed or implied, that problems or deficiencies of the trees or the property will not occur in the future, from any cause. The Consultant shall not be responsible for damages or injuries caused by any tree defects, and assumes no responsibility for the correction of defects or tree related problems.

The owner of the trees may choose to accept or disregard the recommendations of the Consultant, or seek additional advice to determine if a tree meets the owner's risk abatement standards.

The Consulting Arborist has no past, present or future interest in the removal or retaining of any tree. Opinions contained herein are the independent and objective judgments of the consultant relating to circumstances and observations made on the subject site.

The recommendations contained in this report are the opinions of the Consulting Arborist at the time of inspection. These opinions are based on the knowledge, experience, and education of the Consultant. The field inspection was a visual, grade level tree assessment.

The Consulting Arborist shall not be required to give testimony, perform site monitoring, provide further documentation, be deposed, or to attend any meeting without subsequent contractual arrangements for this additional employment, including payment of additional fees for such services as described by the Consultant.

The Consultant assumes no responsibility for verification of ownership or locations of property lines, or for results of any actions or recommendations based on inaccurate information.

This Arborist report may not be reproduced without the express permission of the Consulting Arborist and the client to whom the report was issued. Any change or alteration to this report invalidates the entire report.

Should you have any further questions regarding this property, please contact me at (310) 663-2290.

Respectfully submitted,



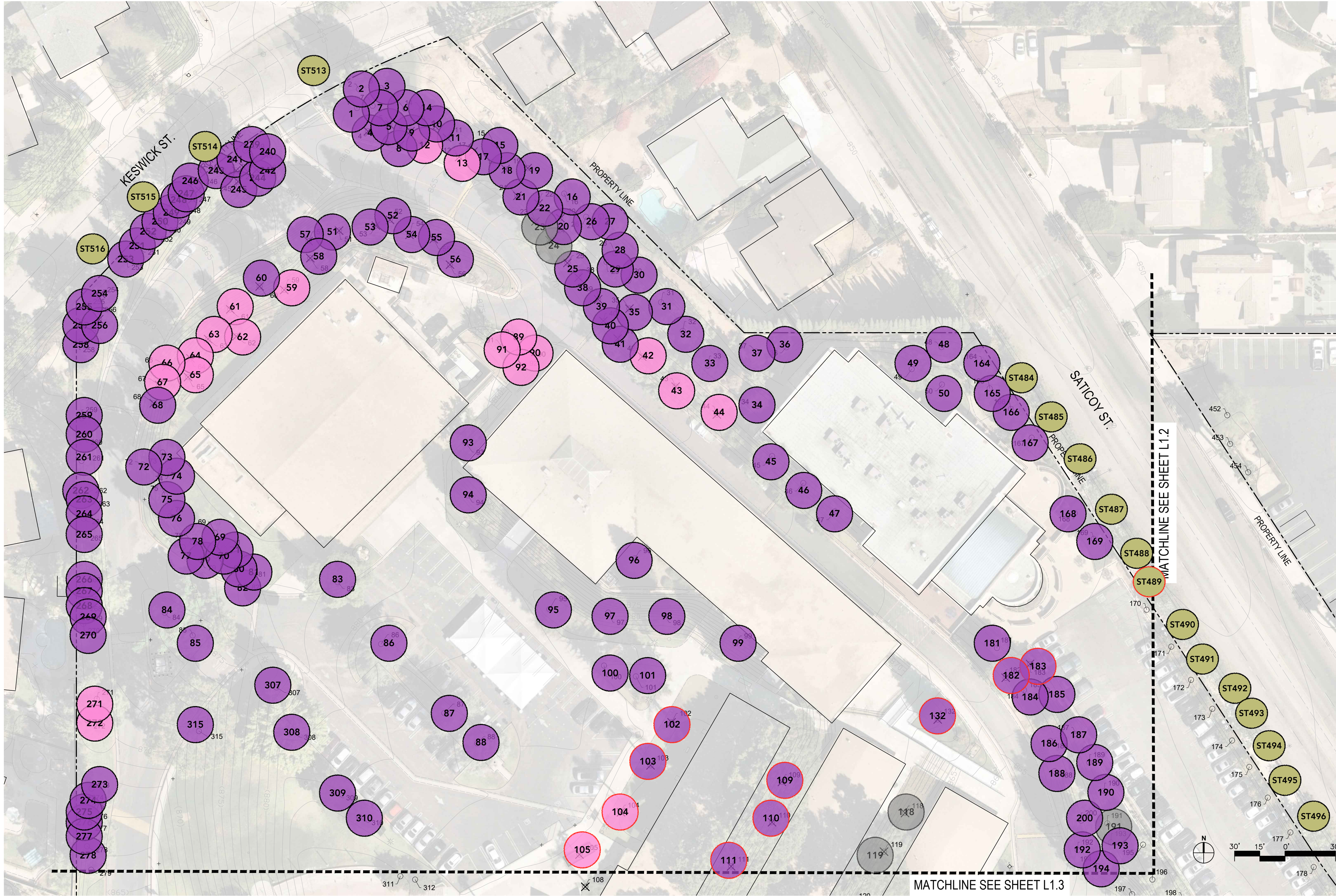
Lisa Smith

Registered Consulting Arborist #464
ISA Board Certified Master Arborist #WE3782BM
ISA Tree Risk Assessor Qualified- Instructor
American Society of Consulting Arborists, Member



THE LINE SHOWN INDICATES
SHEET ORIGINAL PAGE SIZE

11/29/2021 5:13:25 PM

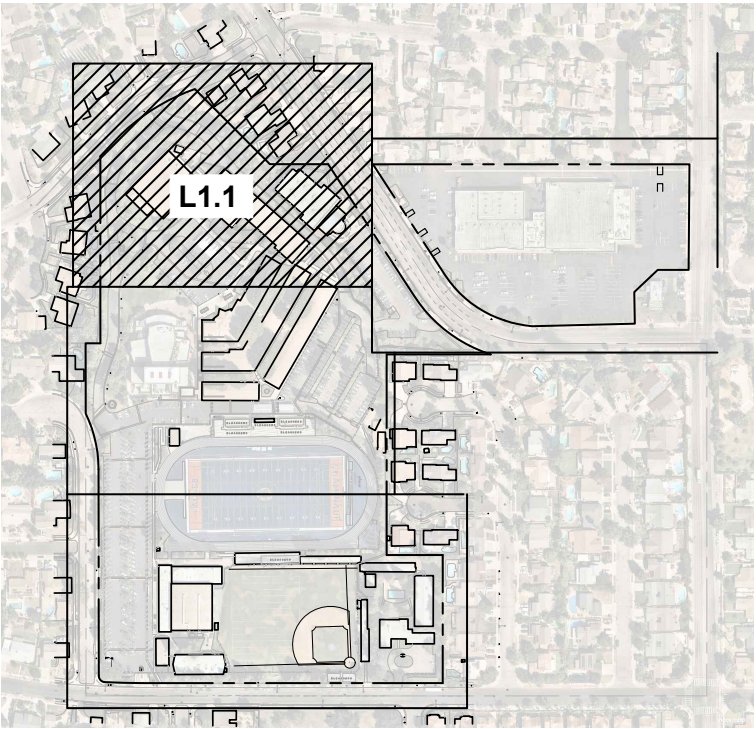


LEGEND

EXISTING TREE TO REMAIN

EXISTING TREE TO BE REMOVED

NOTE: SEE SHEETS L1.5 AND L1.6 FOR EXISTING TREE TABLE AND CALCULATIONS.



KEY MAP: NTS

PLEASE RECYCLE

Appendix A.1: Tree Locations on Project Survey
L1.1

PROJECT SUMMARY	
Site Address	7500 Chaminade Ave, West Hills, CA 91304
Location and/or Specific Plan	Chatsworth
Project Description	New Buildings and Revised Campus Plans
Number of Protected Trees on Site	0

KEY

Non-Protected Significant Tree

Non-Protected Tree

No Existing Tree

Tree For Removal

Street Tree

HM
3561003-000

3548 CONCOURS STREET
ONTARIO, CA 91764
909 989 9979 / www.hmcarchitects.com

SPURLOCK
LANDSCAPE ARCHITECTS
2122 Hancock Street
San Diego, California 92110
619.681.0090
spurlock-land.com

DESCRIPTION	DATE
-------------	------

KEYNOTES

FACILITY:

7500 CHAMINADE AVE.
WEST HILLS, CA 91304

PROJECT:
CHAMINADE COLLEGE PREP HIGH SCHOOL CUP

SHEET NAME:
EXISTING TREE SURVEY

CUP SUBMITTAL

DATE: 03/11/22






CLIENT PROJ NO:

SHEET:

L1.1

Appendix A.1: Tree Locations on Project Survey
L1.2

PROJECT SUMMARY	
Site Address	7500 Chaminade Ave, West Hills, CA 91304
Location and/or Specific Plan	Chatsworth
Project Description	New Buildings and Revised Campus Plans
Number of Protected Trees on Site	0

KEY	
	Non-Protected Significant Tree
	Non-Protected Tree
	No Existing Trees
	Tree For Removal
	Street Tree

3561003-000

3546 CONCOURS STREET
ONTARIO, CA 91764
909 989 9979 / www.hmcarchitects.com

SPURLOCK
LANDSCAPE ARCHITECTS
2122 Hamcock Street
San Diego, California 92110
619.881.0080
spurlock-land.com

DESCRIPTION	DATE
-------------	------

KEYNOTES

FACILITY:

7500 CHAMINADE AVE.
WEST HILLS, CA 91304

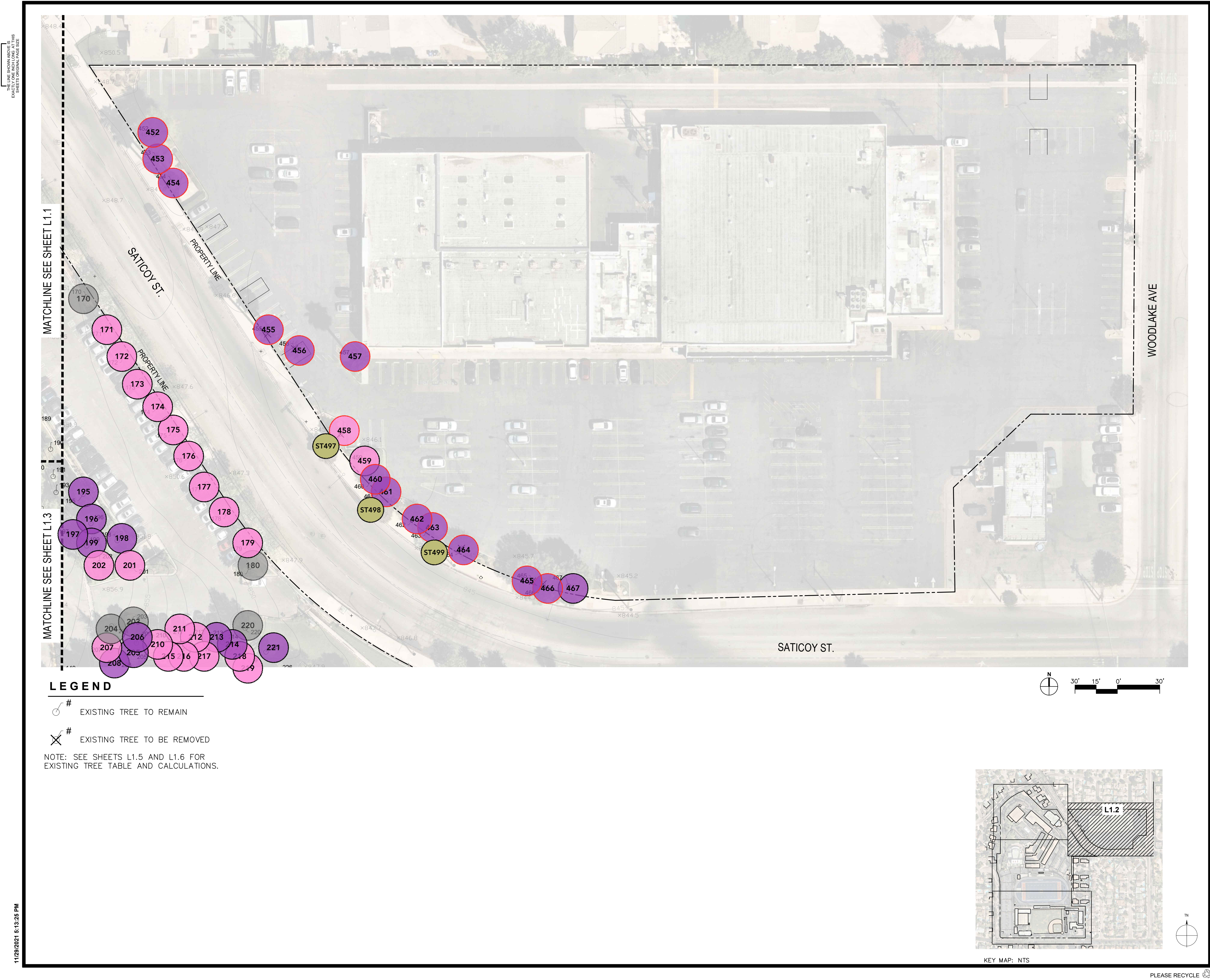
PROJECT:
CHAMINADE COLLEGE PREP HIGH SCHOOL CUP

SHEET NAME:
EXISTING TREE SURVEY

CUP SUBMITTAL

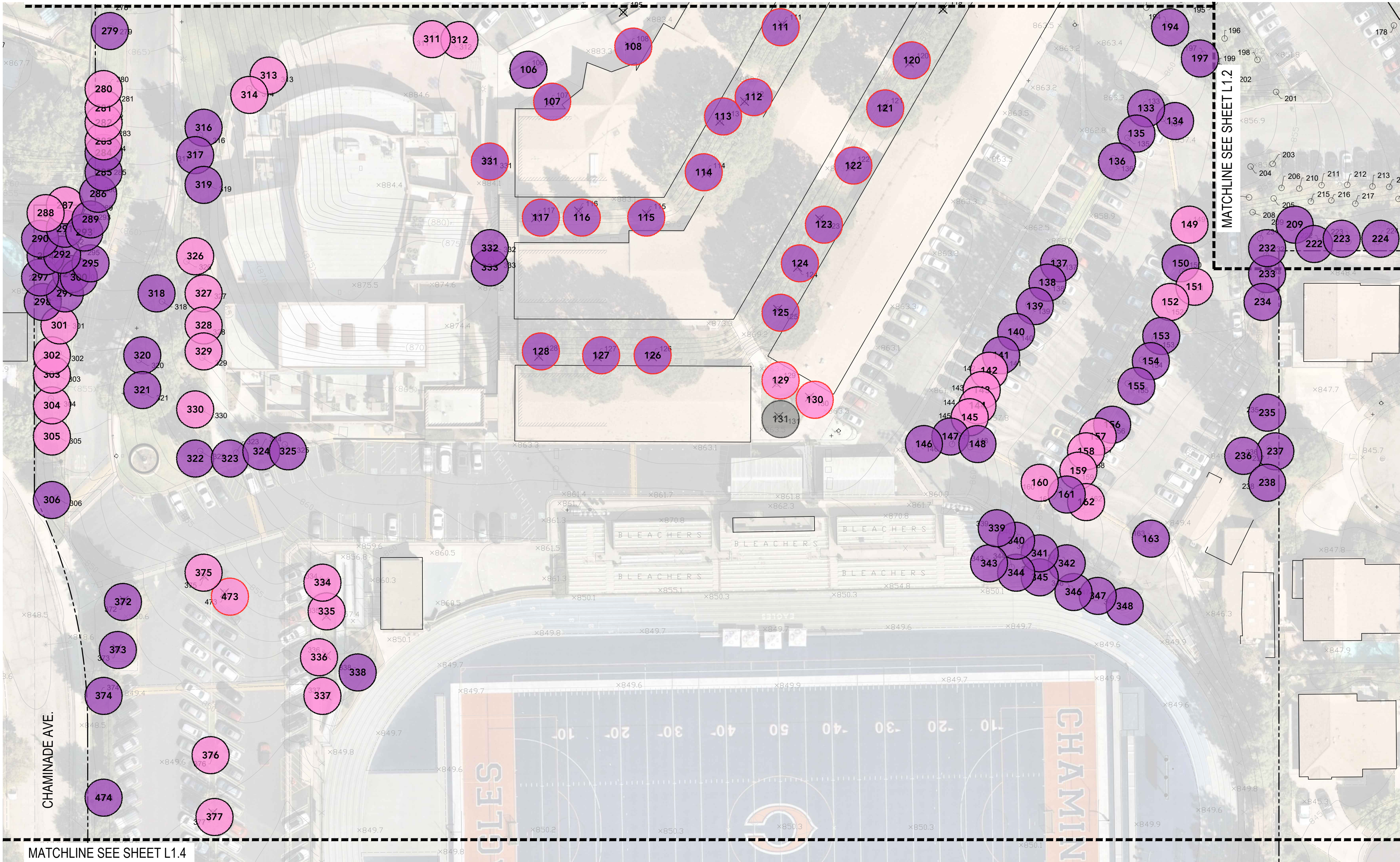
DATE: 03/11/22	CLIENT PROJ NO:
SHEET:	

L1.2



11/20/2021 5:15:25 PM
SHEETS ORIGINAL PAGE SIZE

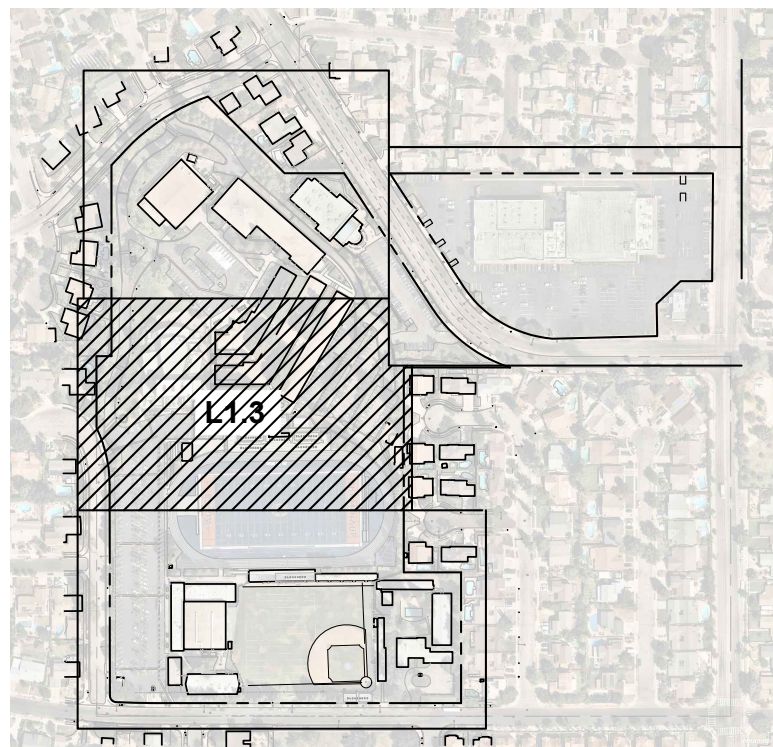
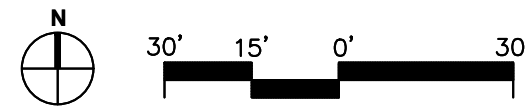
MATCHLINE SEE SHEET L1.1



LEGEND

- # EXISTING TREE TO REMAIN
- # EXISTING TREE TO BE REMOVED

NOTE: SEE SHEETS L1.5 AND L1.6 FOR EXISTING TREE TABLE AND CALCULATIONS.



KEY MAP: NTS

PLEASE RECYCLE ♻️

Appendix A.1: Tree Locations on Project Survey
L1.3

PROJECT SUMMARY	
Site Address	7500 Chaminade Ave, West Hills, CA 91304
Location and/or Specific Plan	Chatsworth
Project Description	New Buildings and Revised Campus Plans
Number of Protected Trees on Site	0
Number of Recommended Removals	

KEY	
	Non-Protected Significant Tree
	Non-Protected Tree
	No Existing Trees
	Tree For Removal

3561003-000

3546 CONCOURS STREET
ONTARIO, CA 91764
909 989 9979 / www.hmcarchitects.com

SPURLOCK
LANDSCAPE ARCHITECTS
2122 Hancock Street
San Diego, California 92110
619.681.0080
spurlock-land.com

DESCRIPTION	DATE
-------------	------

KEYNOTES

FACILITY:

7500 CHAMINADE AVE.
WEST HILLS, CA 91304

PROJECT:
CHAMINADE COLLEGE PREP HIGH SCHOOL CUP

SHEET NAME:
EXISTING TREE SURVEY

CUP SUBMITTAL

DATE: 03/11/22 CLIENT PROJ NO:

SHEET:

L1.3

11/20/2021 5:15:25 PM

