



## **E. Cultural and Paleontological Resources Identification Memorandum**

---

**This page intentionally left blank.**

June 3, 2024

Chris Yeager  
Associate Planner  
**City of Costa Mesa**  
Economic and Development Services Department  
77 Fair Drive  
Costa Mesa, CA 92628

**RE: CULTURAL AND PALEONTOLOGICAL RESOURCES IDENTIFICATION MEMORANDUM  
FOR THE COSTA MESA HIVE LIVE PROJECT, CITY OF COSTA MESA, ORANGE COUNTY,  
CALIFORNIA**

Dear Mr. Yeager:

In support of the Costa Mesa Hive Live Project (project), Michael Baker International completed a South Central Coastal Information Center (SCCIC) records search, literature and historical map review, Native American Heritage Commission (NAHC) Sacred Lands File search, archaeological field survey, and buried archaeological site sensitivity analysis to determine if the project area contains historical resources, as defined in California Environmental Quality Act (CEQA) Guidelines Section 15064.5(a), that may be impacted by the project. Additionally, a Natural History Museum of Los Angeles County (NHMLAC) paleontological records search and search of online and published databases were completed to identify paleontological localities. The project is subject to CEQA review; the City of Costa Mesa (City) is the lead agency. Methods, results, and recommendations are summarized below.

**PROJECT DESCRIPTION**

The 14.25-acre project site is located at 3333 Susan Street, Costa Mesa, California, 92626. The project proposes redeveloping the existing Hive Costa Mesa Business Park and Los Angeles Chargers Hoag Performance Center into a residential development with a small resident-serving commercial component. Three five-story multifamily residential buildings are proposed, with a total of 1,050 rental units and an affordable housing component.

**PROJECT AREA**

The project area is identified as the boundaries of Assessor's Parcel Numbers 140-042-11 and 140-042-12. This includes the maximum extent of ground disturbance and project activities associated with demolition, site preparation, and construction. The project is mapped within the *Newport Beach, California* US Geological Survey (USGS) 7.5-minute topographic quadrangle map Township 5 South, Range 10 West, Section 34 (see **Figures 1-3** in **Attachment 1**).

## MICHAEL BAKER INTERNATIONAL

### RE: CULTURAL AND PALEONTOLOGICAL RESOURCES IDENTIFICATION MEMORANDUM FOR THE COSTA MESA HIVE LIVE PROJECT, CITY OF COSTA MESA, ORANGE COUNTY, CALIFORNIA

Page 2

## CULTURAL RESOURCES IDENTIFICATION METHODS

The methods and results of the SCCIC records search, literature and historical map search, Sacred Lands File search, archaeological field survey, and buried archaeological site sensitivity analysis are presented below.

### SOUTH CENTRAL COASTAL INFORMATION CENTER

Michael Baker International staff conducted a records search of the project area and half-mile search radius at the SCCIC on April 24, 2024 (see **Attachment 2**). The SCCIC, as part of the California Historical Resources Information System, California State University, Fullerton, an affiliate of the California Office of Historic Preservation (OHP), is the official state repository of cultural resources records and reports for Orange County. As part of the records search, the following federal and California inventories were reviewed:

- Archaeological Determinations of Eligibility (OHP 2022). The directory includes eligibility determinations for archaeological resources in Orange County.
- California Inventory of Historic Resources (OHP 2024a).
- California Points of Historical Interest (OHP 2024b).
- California Historical Landmarks (OHP 2024c).
- Built Environment Resources Directory (BERD) (OHP 2024d). The directory includes resources evaluated for listing and listed in the National Register of Historic Places, National Historic Landmarks, California Register of Historical Resources, California Historical Landmarks, and California Points of Historical Interest in Orange County.

## Results

According to SCCIC records, 14 studies have been completed within a half-mile search radius of the project area, as identified in **Table 1**. No studies have been previously completed within the project area.

**Table 1: Previous Cultural Resource Investigations within 0.5 Miles**

Report No.	Author(s)	Date	Title	In Project Area?	Resources in Project Area?
OR-01016	Leonard, Nelson N. III	1975	Environmental Impact Evaluation: Route Alternates Between the Michelson Treatment Plant and Plants on the Santa Ana River, Orange County, California	No	No
OR-01952	Casen, George	1996	Notification of Finding of No Adverse Effect with Standard Conditions for the Bridge Deck Maintenance and Sealing at 30 Locations Throughout Orange County, California	No	No



**MICHAEL BAKER INTERNATIONAL****RE: CULTURAL AND PALEONTOLOGICAL RESOURCES IDENTIFICATION MEMORANDUM FOR THE COSTA MESA HIVE LIVE PROJECT, CITY OF COSTA MESA, ORANGE COUNTY, CALIFORNIA**

Page 3

Report No.	Author(s)	Date	Title	In Project Area?	Resources in Project Area?
OR-01952	Huey, Gene	1989	Notification of Finding of No Adverse Effect with Standard Conditions for the Bridge Deck Maintenance and Sealing at 30 Locations Throughout Orange County, California	No	No
OR-01952	McLean, Deborah and Gene Huey	1995	Notification of Finding of No Adverse Effect with Standard Conditions for the Bridge Deck Maintenance and Sealing at 30 Locations Throughout Orange County, California	No	No
OR-02230	Duke, Curt	2000	Notification of Finding of No Adverse Effect with Standard Conditions for the Bridge Deck Maintenance and Sealing at 30 Locations Throughout Orange County, California	No	No
OR-02230	Bonner, Wayne H.	1998	Notification of Finding of No Adverse Effect with Standard Conditions for the Bridge Deck Maintenance and Sealing at 30 Locations Throughout Orange County, California	No	No
OR-02550	Duke, Curt	2002	Notification of Finding of No Adverse Effect with Standard Conditions for the Bridge Deck Maintenance and Sealing at 30 Locations Throughout Orange County, California	No	No
OR-03041	Wlodarski, Robert J.	2006	Notification of Finding of No Adverse Effect with Standard Conditions for the Bridge Deck Maintenance and Sealing at 30 Locations Throughout Orange County, California	No	No

**MICHAEL BAKER INTERNATIONAL****RE: CULTURAL AND PALEONTOLOGICAL RESOURCES IDENTIFICATION MEMORANDUM FOR THE COSTA MESA HIVE LIVE PROJECT, CITY OF COSTA MESA, ORANGE COUNTY, CALIFORNIA**

Page 4

Report No.	Author(s)	Date	Title	In Project Area?	Resources in Project Area?
OR-03776	Padon, Beth	2000	Notification of Finding of No Adverse Effect with Standard Conditions for the Bridge Deck Maintenance and Sealing at 30 Locations Throughout Orange County, California	No	No
OR-03776	McElroy, Sheila	2000	Notification of Finding of No Adverse Effect with Standard Conditions for the Bridge Deck Maintenance and Sealing at 30 Locations Throughout Orange County, California	No	No
OR-03977	Futon, Phil and Terri Fulton	2007	Notification of Finding of No Adverse Effect with Standard Conditions for the Bridge Deck Maintenance and Sealing at 30 Locations Throughout Orange County, California	No	No
OR-04007	Fulton, Phil and Terri Fulton	2009	Notification of Finding of No Adverse Effect with Standard Conditions for the Bridge Deck Maintenance and Sealing at 30 Locations Throughout Orange County, California	No	No
OR-04172	Chasteen, Carrie	2011	Notification of Finding of No Adverse Effect with Standard Conditions for the Bridge Deck Maintenance and Sealing at 30 Locations Throughout Orange County, California	No	No
OR-04223	Flynn, Chris	2011	Notification of Finding of No Adverse Effect with Standard Conditions for the Bridge Deck Maintenance and Sealing at 30 Locations Throughout Orange County, California	No	No

A total of eleven resources are documented within the half-mile search radius of the project area, as detailed in **Table 2**. None of these resources are located within or adjacent to the project area.

The BERD was searched for any resources located within 0.5 miles of the project site. No built environment resources within the project area were identified in the BERD (OHP 2024d).

## MICHAEL BAKER INTERNATIONAL

### RE: CULTURAL AND PALEONTOLOGICAL RESOURCES IDENTIFICATION MEMORANDUM FOR THE COSTA MESA HIVE LIVE PROJECT, CITY OF COSTA MESA, ORANGE COUNTY, CALIFORNIA

Page 5

**Table 2: Previously Recorded Cultural Resources within 0.5 Miles**

Primary Number	Trinomial	Description	Location in Relation to Project Site
P-30-001617	CA-ORA-001617	Prehistoric shell scatter	Outside
P-30-001629	CA-ORA-001629H	Home ranch historic period refuse deposits	Outside
P-30-100337	None	Isolate – Unifacial core	Outside
P-30-100341	None	Isolate – Historic period ceramic fragment	Outside
P-30-176764	None	Single-family residence	Outside
P-30-176765	None	Ancillary building and farm/ranch	Outside
P-30-176945	None	General store	Outside
P-30-176949	None	Single-family residence	Outside
P-30-177141	None	Single-family residence	Outside
P-30-177411	None	Single-family residence	Outside
P-30-177413	None	One story commercial building	Outside

## LITERATURE AND HISTORICAL MAP REVIEW

Michael Baker International staff reviewed literature and historical maps for historical information about the project area and the vicinity. Below is a list of resources reviewed, followed by a narrative description of the results.

### Historical Maps

- Plat of the Santiago de Santa Ana Rancho (Huntington Library 1860)
- *Santa Ana, California*, 1:62,500 topographic map (USGS 1896)
- *Santa Ana, California*, 1:62,500 topographic map (USGS 1901)
- *Newport Beach, California*, 1:31,680 topographic map (USGS 1932)
- *Newport Beach, California*, 1:31,680 topographic map (USGS 1935)
- *Santa Ana, California*, 1:62,500 topographic map (USGS 1942)
- *Newport Beach, California*, 1:24,000 topographic map (USGS 1951)
- *Newport Beach, California*, 1:24,000 topographic map (USGS 1965a)
- *Newport Beach, California*, 1:24,000 topographic map (USGS 1965b)
- *Costa Mesa, California*, 1:24,000 orthophotoquad map (USGS 1974)

### Historical Aerial Images

- University of California, Santa Barbara Library (UCSB) Geospatial Collection (2024)
- National Environmental Title Research (NETR) (n.d.)

### Literature

- "The Archaeology of California" (Arnold, Walsh, and Hollimon 2004)

## MICHAEL BAKER INTERNATIONAL

### RE: CULTURAL AND PALEONTOLOGICAL RESOURCES IDENTIFICATION MEMORANDUM FOR THE COSTA MESA HIVE LIVE PROJECT, CITY OF COSTA MESA, ORANGE COUNTY, CALIFORNIA

Page 6

- "Gabrielino" (Bean and Smith 1978)
- "One If by Land, Two If by Sea: Who Were the First Californians?" (Erlandson et al. 2007)
- "Agriculture, Drought & Chumash Congregation in the California Missions (1782-1834)" (Jackson 1999)
- *Handbook of the Indians of California* (Kroeber 1925)
- *The First Angelinos: The Gabrielino Indians of Los Angeles* (McCawley 1996)
- "Los Angeles, 1781–1981" (Meyer 1981)
- *California Archaeology* (Moratto 1984)
- *Vineyards and Vaqueros: Indian Labor and the Economic Expansion of Southern California, 1771–1877* (Phillips 2010)
- "Reconceptualizing the Encinitas Tradition of Southern California (Sutton and Gardener 2010)
- "Cultural Tradition and Ecological Adaptation on the Southern California Coast" (Warren 1968)

## Results

The earliest habitation of the Los Angeles Basin and Santa Ana River watershed likely occurred in the Paleocoastal or Paleoindian period, which is generally dated between about 13,000 and 8,500 before present (BP) (Arnold Walsh, and Hollimon 2004; Moratto 1984; Erlandson et al. 2007). These earliest inhabitants were highly mobile hunter-gatherers who left behind little in the way of archaeological remains.

The first uncontested evidence of human occupation in this area dates to about 9,000 BP. The archaeological evidence is associated with the Millingstone Cultural Horizon, or, as it is also known, the Encinitas Tradition. Millingstone populations established permanent settlements that were located primarily on the coast and in other locations with reliable water sources and a variety of potential foodstuffs. There, they relied heavily on shellfish, seeds, and small animals. The period takes its name from the appearance of ground stone artifacts. In the Early Millingstone, these ground stone artifacts are manos and metates, but after approximately 5,000 BP, when acorns become important in the diet, mortars and pestles become an important component of the artifact assemblage (Warren 1968; Sutton and Gardner 2010).

The period between 3,500 BP and 1,500 BP is known as the Intermediate period. Increasing population pressures led to intensified exploitation of existing terrestrial and marine resources. The intensified resource procurement was enabled by technological innovations such as the circular fishhook on the coast, greater use of the mortar and pestle to exploit acorns more efficiently, and the use of the dart and atlatl to diversify hunting (Erlandson et al. 2007). Larger numbers of settlements that are also bigger in size are observed in the archaeological record, suggesting a larger and more sedentary population. Trade networks and greater craft specialization developed during this period.

During the Late Prehistoric, which began approximately 1,500 BP and continued until European intrusion, is the period of the development and florescence of the Native American tribes

## **MICHAEL BAKER INTERNATIONAL**

### **RE: CULTURAL AND PALEONTOLOGICAL RESOURCES IDENTIFICATION MEMORANDUM FOR THE COSTA MESA HIVE LIVE PROJECT, CITY OF COSTA MESA, ORANGE COUNTY, CALIFORNIA**

**Page 7**

encountered by the Spanish. Late Prehistoric subsistence consisted of hunting, trapping, fishing, and gathering, and continued the pattern of increased population and sedentism.

#### **Ethnohistoric and Historic Context**

This project site is located in a region traditionally important to multiple Native American groups. In particular, these include the Gabrielino (including the Tongva and Kizh), the Juaneño or Acjachemen, and the Luiseño. The terms Tongva, Kizh, and Acjachemen are preferred by many descendant groups over the Spanish words that have historically been used to describe them, while the Luiseño are typically identified by their band (including La Jolla, Pala, Pauma, Pechanga, Rincon, Soboba, and San Luis Rey). Each group is described below.

Spanish explorers first visited the coast of southern California in 1542, but European settlement did not begin in the area until 1769 when Gaspar de Portola led an exploratory mission intended to open up Alta California to settlement. On September 8, 1771, Franciscan friars established Mission San Gabriel Arcángel, approximately 30 miles northwest of the project site. The Franciscans called the local Native Americans Gabrielinos after the mission. The Tongva and Acjachemen Native American tribes are most closely tied to the Costa Mesa area. When the Spanish missionaries from Mission San Juan Capistrano visited the area, it was referred to by the Natives who lived there as Lukup (City of Costa Mesa 2024, Costa Mesa Historical Society 2024).

#### **Gabrielino (or Tongva and Kizh)**

The term "Gabrielino" is a general term that refers to those Native Americans whom the Spanish sent to the Mission San Gabriel Arcángel. Two indigenous terms are commonly used by tribal groups to refer to themselves and are preferred by descendant groups: Tongva and Kizh. Ethnographer C. Hart Merriam recorded the term Tongva in 1903 (Merriam 1905). The term Kizh was first published by ethnologist Horatio Hale, relying on word lists given to him by James Dwight Dana, in 1846 (Hale 1846: 222). Since there are two terms that different groups use to refer to themselves, the term Gabrielino is used in this section to encompass both Tongva and Kizh groups.

Prior to European colonization, the Gabrielino occupied a diverse area that included the watersheds of the Los Angeles, San Gabriel, and Santa Ana Rivers; the Los Angeles basin; and the islands of San Clemente, San Nicolas, and Santa Catalina (Bean and Smith 1978). Their neighbors included the Chumash and Tataviam to the north, the Juaneño to the south, and the Serrano and Cahuilla to the east. The Gabrielino are reported to have been second only to the Chumash in terms of population size and regional influence (Bean and Smith 1978). The Gabrielino language was part of the Takic branch of the Uto-Aztecan language family.

Gabrielino villages were most common along the coast and along the region's major rivers, where villages formed of domed semipermanent structures, the Spanish likened to half-oranges centered around a temple and the home of the village chief. The project area is located between two known Gabrieleño village locations: *Pasbenga*, approximately 4 miles northeast, and *Lukup*, approximately 4.5 miles southwest (McCawley 1996). Other villages, the names of which are not

## **MICHAEL BAKER INTERNATIONAL**

### **RE: CULTURAL AND PALEONTOLOGICAL RESOURCES IDENTIFICATION MEMORANDUM FOR THE COSTA MESA HIVE LIVE PROJECT, CITY OF COSTA MESA, ORANGE COUNTY, CALIFORNIA**

#### **Page 8**

recorded, may have also existed in the area. By the early 1800s, as introduced diseases led to population decline, and Spanish use of the land for agriculture and grazing made the Gabrielinos' reliance on their traditional lifestyle increasingly untenable, the majority of California's coastal Native American populations had entered the mission system (Jackson 1999).

The Gabrielino Indians were hunter-gatherers and lived in permanent communities located near the presence of a stable food supply. Subsistence consisted of hunting, fishing, and gathering. Small terrestrial game was hunted with deadfalls and rabbit drives and by burning undergrowth, while larger game, such as deer, were hunted using bows and arrows. Fish were taken by hook and line, nets, traps, spears, and poison (Bean and Smith 1978). The primary plant resources were acorns, gathered in the fall and processed in mortars and pestles, and various seeds that were harvested in late spring and summer and ground with manos and metates. The seeds included chia and other sages, various grasses, and islay or holly-leafed cherry. Community populations generally ranged from 50 to 100 inhabitants, although larger settlements may have existed. The Gabrielino are estimated to have had a population numbering around 5,000 in the precontact period (Kroeber 1925).

#### **Juaneño (or Acjachemen)**

As the preferred term of the descendant community, the term Acjachemen is used hereafter to refer to the group more widely known to historians and anthropologists as the Juaneño. The Acjachemen spoke a language belonging to the Cupan group of the Takic subfamily of the Uto-Aztecan language family. They were known as Juaneño because of their association with Mission San Juan Capistrano. Fray Gerónimo de Boscana used the term Acjachemen to describe the indigenous group associated with the Mission San Juan Capistrano, and according to J. P. Harrington, "informants remembered that the name was used as that of San Juan Capistrano town" (Harrington 1978: 103). During his time at San Juan Capistrano, Boscana compiled an ethnographic account of the Acjachemen, including an account of the belief system centered around Chinigchinich.

The Acjachemen were linguistically and culturally related to the neighboring Luiseño (with whom they are often grouped; see Bean and Shipek 1978), Cahuilla, and Cupeño. Twentieth-century anthropologists agreed that Acjachemen territory extended from San Onofre Canyon in the south and inland from the Pacific Ocean to Santiago Peak and the ridges above Lake Elsinore (Bean and Shipek 1978; Kroeber 1925: 636). The northern Acjachemen border has been described as either just above Aliso Creek (Kroeber 1925: 636) or somewhere somewhat farther north, possibly the Santa Ana River or somewhere in the vicinity of Newport Beach (O'Neil 1988). However, Acjachemen descendant communities dispute this claim. According to Joyce Stanfield Perry, Cultural Resource Director for the Juaneño Band of Mission Indians, Acjachemen Nation-Belardes, "Our homeland extends from coastal Long Beach to the north, to Camp Pendleton to the south and includes all of Orange County as well as parts of western Riverside County" (Perry 2023: 1). Santa Ana is seen by the modern Acjachemen as shared territory with the Gabrielino.

## **MICHAEL BAKER INTERNATIONAL**

### **RE: CULTURAL AND PALEONTOLOGICAL RESOURCES IDENTIFICATION MEMORANDUM FOR THE COSTA MESA HIVE LIVE PROJECT, CITY OF COSTA MESA, ORANGE COUNTY, CALIFORNIA**

#### **Page 9**

The Acjachemen lived in sedentary autonomous villages located in diverse ecological zones. Each settlement claimed specific fishing and collecting regions. Typically, villages were located in valley bottoms, along coastal strands and streams, and near mountain foothills. Villages were usually sheltered in coves or canyons, on the side of slopes near water, and in good defensive spots (O'Neil and Evans 1980).

Trails, hunting sites, temporary hunting camps, quarry sites, and ceremonial and gaming locations were communally owned, while individuals or families owned houses, gardens, tools, ritual equipment, and ornamentation. Most groups had fishing and gathering sites along the coast that they visited annually from January to March when inland supplies were scarce. October to November was an acorn-gathering time when most of the village would settle in the mountain oak groves. Houses were conical in form, partially subterranean, covered with thatch, reeds, brush, or bark. Sweathouses were round and earth-covered. Each village was enclosed with a circular fence and had a communal ceremonial structure at the center (Bean and Shipek 1978).

#### **Luiseno**

The Luiseno are a tribal group located south and west of the Acjachemen. Like the Gabrielino and Acjachemen, they take their English name from the Spanish mission to which most of them were assigned, San Luis Rey de Francia, located in today's Oceanside. Luiseno language and culture are so closely related to those of the Acjachemen that the authors of the Smithsonian Institution's *Handbook* treat them as a single tribe (Bean and Shipek 1978).

#### **Spanish, Mexican, and American Santa Ana**

In 1810, Mexican Governor Jose Joaquin de Arrillaga granted the 63,414-acre Rancho Santiago de Santa Ana, including the project area, to Jose Antonio Yorba and his nephew Pablo Peralta. The project area is located within the mapped boundaries of Rancho Santiago de Santa Ana (Huntington Library 1860). Native Americans continued to live on the land grant and made up much of the rancho's workforce. California's Native Americans sometimes preferred to live as vaqueros and laborers on the region's vast land grants in order to avoid living more directly under the mission system (Phillips 2010).

In 1821, Mexico won its independence from Spain. The new state was secular in nature and moved increasingly toward secularization of the mission and dispersal of the mission properties among politically connected elites. In 1834, the missions began to be secularized, and their lands were divided up. Little of the missions' lands and wealth went to the Native Americans. More than 600 ranchos were granted between 1833 and 1846 as the Mexican government sought to solidify its authority over Alta California amid fears of intrusion by the United States.

The United States captured California during the Mexican-American War of 1846–1848. The discovery of gold in California led to a population boom in the 1850s and 1860s. American settlers began to arrive in the area that is now Costa Mesa in the late 19<sup>th</sup> century, leading to the establishment of the towns of Fairview and Harper. Fairview, founded in 1887, quickly grew into a boomtown but faced decline by 1889. Harper, a community that arose alongside the Santa Ana

## **MICHAEL BAKER INTERNATIONAL**

### **RE: CULTURAL AND PALEONTOLOGICAL RESOURCES IDENTIFICATION MEMORANDUM FOR THE COSTA MESA HIVE LIVE PROJECT, CITY OF COSTA MESA, ORANGE COUNTY, CALIFORNIA**

**Page 10**

and Newport Railway, was renamed Costa Mesa in 1920 after a contest sponsored by resident Fanny Bixby Spencer and her husband (Costa Mesa Historical Society 2024).

Agriculture played a crucial role in Costa Mesa's early economy, with the region known for its apple and lima bean production. However, severe droughts in the early 20<sup>th</sup> century caused many farming families to leave. The introduction of oil drilling in 1906 marked a shift towards industrial development (Costa Mesa Historical Society 2024, Mesa Water District 2024).

Costa Mesa experienced significant growth during and after World War II. The establishment of the Santa Ana Army Air Base brought thousands of service members to the area, many of whom settled there permanently after the war. This influx of new residents spurred the city's incorporation in 1953 (Costa Mesa Historical Society 2024).

Today, Costa Mesa is known for its vibrant economy based on retail, commerce, and light manufacturing. It is home to cultural landmarks such as the Orange County Fairgrounds, the Segerstrom Center for the Arts, and numerous parks and recreational facilities (City of Costa Mesa 2024, Costa Mesa Historical Society 2024).

#### **Project Area Development History**

The proposed project area was used for agricultural purposes or undeveloped up to 2004. The earliest aerial from Historicaerials.com is from 1953 and shows the project area as an underdeveloped land situated within the confines of Huntzinger Avenue, Santa Ana Road, Baker, and Harbor Boulevard. In the far northwest corner of the project area, there appears to be a tank situated on the ground that was likely a water storage tank, as this location is still owned and operated by the Mesa Water District as one of the well locations.

In the 1963 aerial of the project area, the land was still underdeveloped, with the exception of the water facility. However, the landscape around it, within less than a half mile each way, had new roads installed. Just over 100 feet from the southernmost tip of the project area, a new road, Greenville Road, curved in from Huntzinger Avenue and scooped itself west towards the Santa Ana boundary. The project area changes little in the 1972 aerial, but a large commercial building is shown in the parcel immediately west of the project area.

The 1987, 1992, and 1993 aerials show the project area as still undeveloped, but much of the area surrounding it is developed. The aerial from 1994 depicts an area of approximately 94 feet by 160 feet in the location of the previously mentioned water tank that has been graded or worked. The tank visible in previous aerials was removed. The beginnings of new structure foundations are visible along the southern edge of the graded area.

The 1995 aerial of the project area shows two small structures and a paved lot enclosed by a wall in the northwest portion of the project area where the water tank once was and where the area was being graded in the aerial from the year before. Additionally, the project area and the areas just west appear to have been graded or perhaps mowed with a 170-foot by 700-foot strip immediately west of the project area with new green growth.



## **MICHAEL BAKER INTERNATIONAL**

### **RE: CULTURAL AND PALEONTOLOGICAL RESOURCES IDENTIFICATION MEMORANDUM FOR THE COSTA MESA HIVE LIVE PROJECT, CITY OF COSTA MESA, ORANGE COUNTY, CALIFORNIA**

**Page 11**

The 1996 aerial shows a newly completed road, known now as Susan Street, along the eastern edge of the project area connecting South Coast Drive and West Sunflower Avenue. Susan Street now separates the project area from the land to its east and west of Greenville Road. The southern half of that area is shown as developed into a large parking lot, while the northern top half remained undeveloped.

By 1998, the parking lot at what is now the Costa Mesa Justice Center had been expanded toward the building of what is now the AAA Costa Mesa building. The land in between the parking lot and building remained undeveloped; the project area land also remained undeveloped, outside of the two small standing buildings in the northwest corner. The state of development remained the same in 1999, 2000, and 2002.

An aerial from 2003 shows the project area under grading in preparation for the construction of the now-existing building complex. The undeveloped area on the east side of Susan Street was also prepped for construction, with a 2004 photo showing the start of the foundation north of the developed parking lot.

By 2004, the building structure, which currently serves as the Hive and Los Angeles Chargers Hoag Performance Center, had been built. The parking lot around it was also developed, and the two small buildings that had previously been erected remained. The 2005, 2009, and 2010 aerials show the same developmental state with no visible alterations. By 2010, no visible construction alterations had been made to the project area; however, the undeveloped land between the Costa Mesa Justice Center parking lot and the AAA Costa Mesa Insurance building had some work done to it. Aerial photographs from 2012 show the same developmental state of the project area and its surrounding areas with no visible alterations. No historic-aged buildings are present within the project area.

## **NATIVE AMERICAN HERITAGE COMMISSION SACRED LANDS FILE SEARCH**

On April 11, 2024, Michael Baker International requested that the NAHC search the Sacred Lands File for any Native American cultural resources that might be affected by the project. The NAHC responded in a letter dated April 24, 2024, that the Sacred Lands File had been searched with negative results. The NAHC correspondence is presented in **Attachment 3**. The City has mailed Assembly Bill 52 and Senate Bill 18 consultation letters to the tribal contacts provided by the NAHC. A record of that consultation is provided in the associated environmental documents.

## **ARCHAEOLOGICAL FIELD SURVEY**

### *Methods*

An archaeological survey of the project area was conducted on April 30, 2024, by Michael Baker International archaeologists Rachel Garcia and James Daniels. Nearly the entire project area was developed and was thus subjected to a reconnaissance-level survey. Regular transect intervals were not employed. The existing buildings and structures were photographed, but as they are not yet historic in age, they were not documented. The ditches along the perimeter of the project area

**MICHAEL BAKER INTERNATIONAL**

**RE: CULTURAL AND PALEONTOLOGICAL RESOURCES IDENTIFICATION MEMORANDUM FOR THE  
COSTA MESA HIVE LIVE PROJECT, CITY OF COSTA MESA, ORANGE COUNTY, CALIFORNIA**

**Page 12**

and in the center of the parking lot on the west side of the complex were inspected for artifacts, as these were the only areas with exposed dirt.

*Results*

In the developed portions of the project site, the ground is covered with lawns, landscaping, and structures, and the Chargers training field associated with the Hoag Center is covered with artificial turf, so there was very little to no surface visibility of undisturbed soils (**Photo 1**). These improvements would have resulted in substantial subsurface disturbances. No archaeological resources were identified within this part of the project site.

In the ditches inspected along the perimeter of the project area, four *Chione sp.* shell fragments and one historic ceramic fragment were identified on the shallow banks of the ditches (**Figure 4**). The distances between the artifacts are such that the discoveries are considered isolate finds. Based on the geotechnical study by Nova Services, the first three feet of the project area are composed of primarily undocumented artificial fill (Bergeland et al. 2024). Since the origin of the fill is not documented, it is unclear if the fill came from on-site or off-site.

Regardless, the context of the surface finds lack integrity as a result of previous filling and grading in the area, and the isolate finds are considered not significant.



**Photo 1: The Hoag Performance Center training field behind one of three buildings present in the project area.**

### **ARCHAEOLOGICAL SITE SENSITIVITY ANALYSIS**

Sensitivity for cultural resources consisting of archaeological sites is considered low at and near the surface but increases to moderate with depth.

The geotechnical report and geologic and soil maps indicate that the surficial deposits of the site consist of artificial fill, but below approximately three feet, the soil consists of younger Quaternary alluvial sediments. These sediments have the potential to contain buried archaeological deposits. The late nineteenth- to early twentieth-century bed of the Santa Ana River was located approximately 0.6 miles to the northwest and would have provided abundant resources to area inhabitants. As the river meandered and changed its course, it or its tributaries may have been located closer to the project area at times. These conditions heighten the sensitivity of the project area for buried cultural resources.

However, the project area has experienced recent disturbances associated with the construction of the existing development. Building methods at the time and the installation of associated

## **MICHAEL BAKER INTERNATIONAL**

### **RE: CULTURAL AND PALEONTOLOGICAL RESOURCES IDENTIFICATION MEMORANDUM FOR THE COSTA MESA HIVE LIVE PROJECT, CITY OF COSTA MESA, ORANGE COUNTY, CALIFORNIA**

**Page 14**

utilities would have resulted in the disturbance of archaeological sites buried at shallow depths. The geotechnical testing indicates that a layer of artificial fill, up to three feet thick, covers the entire project site. However, buried resources may remain in areas where developments such as parking lots or structures with shallow foundations have required only minimal ground disturbance or below the existing imported fill.

Therefore, the sensitivity of the project area at the surface and near surface is low due to past disturbances. However, excavations for the project are anticipated to disturb a large part of the project area to points below the level of existing fill and other disturbances. The sensitivity for potential buried prehistoric archaeological sites is moderate in these undisturbed soils.

## **PALEONTOLOGICAL RESOURCES IDENTIFICATION METHODS**

The records search results, literature review, and paleontological sensitivity analysis are presented below.

### **RECORDS SEARCHES AND LITERATURE REVIEW**

California is divided into eleven geomorphic provinces, each defined by unique geologic and geomorphic characteristics. The project area is located in the northwestern portion of the Peninsular Ranges geomorphic province. The province consists of a series of ranges separated by northwest-trending valleys with geology typified by granitic rock intruding into older metamorphic rocks (CGS 2002).

The geology of Costa Mesa has been mapped by Rogers (1965) at a scale of 1:250,000 and by Langenheim et al. (2006), Morton and Miller (2006), and Bedrossian et al. (2012) at a scale of 1:100,000. Geologic units underlying the project area have been mapped as Holocene alluvial deposits (Qal of Rogers 1965), late Holocene to late Pleistocene-age young Quaternary deposits (Qya of Langenheim et al. 2006), Holocene to late Pleistocene-age young axial-channel deposits (Qyas of Morton and Miller 2006), and Holocene to late Pleistocene-age young alluvial deposits (Qya of Bedrossian 2012). Deposits from the Holocene epoch (less than 11,700 years ago) can contain remains of animals and plants; however, only those from the middle to early Holocene (older than about 5,000 radiocarbon years) are considered scientifically important or significant (Society of Vertebrate Paleontology 2010). Holocene-age deposits may overlie older alluvium of Pleistocene age at unknown but potentially shallow depths. Pleistocene-age alluvial deposits are also potentially present in the project area and have yielded scientifically important fossils elsewhere in the region, including horses, camels, reptiles, birds, marine mammals, and fish at various depths below the current ground surface (**Tables 3 and 4**).

Soils of the project area are mapped as Bolsa silt loam, drained (NRCS n.d.). Bolsa series soils are deep, somewhat poorly drained soils that formed in mixed alluvium in flood plains and basins. The mean annual precipitation is about 13 inches (USDA 1997). The project geotechnical study confirms that alluvial deposits of clays, sands, and silts extend from approximately 3 to 4.5 feet below the surface down to the maximum depth required for excavations for the proposed project.

**MICHAEL BAKER INTERNATIONAL****RE: CULTURAL AND PALEONTOLOGICAL RESOURCES IDENTIFICATION MEMORANDUM FOR THE COSTA MESA HIVE LIVE PROJECT, CITY OF COSTA MESA, ORANGE COUNTY, CALIFORNIA**

Page 15

The NHMLAC completed a paleontology collection records search for locality and specimen data on March 3, 2024. The results of that search are included in **Attachment 4**. The records search identified ten known fossil localities in the NHMLAC's collection in the vicinity of the project site (**Table 3**). Pleistocene-age alluvial deposits have yielded scientifically important fossils such as identifiable freshwater invertebrate fossils, including clams and bryozoans, and vertebrate fossils, such as camels, horses, and elephants, within 5 miles of the project.

**Table 3: NHMLAC Paleontological Records Search Results**

Locality Number	Distance to Project Area	Formation	Taxa	Depth
LACM IP 4695	< 2 miles SE	Palos Verdes Sand	Invertebrates - clam ( <i>Saxidomus</i> ), bryozoan ( <i>Bryozoa indet.</i> , <i>Conopeum</i> )	Unknown
LACM VPP 4219; LACM IP 31322, 5062	~ 3 miles S	Palos Verdes Sand (coarse poorly sorted friable sand)	Camel family (Camelidae), sea turtle (Cheloniidae); uncatalogued fish and birds; invertebrates ( <i>Entobia</i> , <i>Lottia</i> , <i>Caesia</i> , <i>Volvania</i> , <i>Ala</i> , <i>Eulithidium</i> , <i>Chama</i> , <i>Glossaulax</i> , <i>Agathistoma</i> , <i>Sinum</i> , <i>Chlorostoma</i> , <i>Calianax</i> , <i>Ophidi Dermella</i> , <i>Serpulorbis</i> , <i>Argopecten</i> , and others)	30 feet bgs
LACM IP 21488	~ 3 miles S	Unknown Formation (Pleistocene; med to coarse limonitic stained sand)	Invertebrates (unspecified)	Unknown
LACM VP 7657-7659	~ 4 miles W	Unknown formation (Pleistocene; gray siltstone)	School shark ( <i>Galeorhinus</i> ), eagle ray ( <i>Myliobatus</i> ), goby ( <i>Lepidogobius</i> , <i>Leptocottus</i> ), midshipmen ( <i>Porichthys</i> ), croaker ( <i>Seriphus</i> ), flatfish ( <i>Citharichthys</i> ), cusk-eel ( <i>Otophidium</i> ), skate ( <i>Raja</i> ), angelshark ( <i>Squatina</i> ), sculpin (Cottidae)	150-350 feet bgs
LACM VP 3267	~ 4 miles S	Unknown formation (Pleistocene)	Elephant clade (Proboscidea)	Unknown

**MICHAEL BAKER INTERNATIONAL****RE: CULTURAL AND PALEONTOLOGICAL RESOURCES IDENTIFICATION MEMORANDUM FOR THE COSTA MESA HIVE LIVE PROJECT, CITY OF COSTA MESA, ORANGE COUNTY, CALIFORNIA****Page 16**

Additionally, Michael Baker International conducted a supplemental investigation within 5 miles of the project area using the following online sources:

- University of California Museum of Paleontology Locality Search (UCMP n.d.)
- San Diego Natural History Museum Collection Database (SDNHM n.d.)
- The Paleobiology Database (PBDB n.d.)

The supplemental investigation resulted in the identification of three additional fossil localities within 5 miles of the project area (**Table 4**).

**Table 4: Supplemental Paleontological Records Search**

Locality Number	Formation	Taxa	Depth
187072 (PBDB)	Fernando Formation (Pliocene to Pleistocene)	Invertebrates - ( <i>Chlamys rubida</i> )	Unknown
190889 (PBDB)	Palos Verdes Sand Formation (Pleistocene)	Turtles ( <i>Emys marmorata</i> ), loons ( <i>Gavia</i> ), murre ( <i>Uria aalge</i> ), albatrosses ( <i>Diomedea</i> ), shearwaters ( <i>Puffinus</i> ), otters ( <i>Enhydra lutris</i> ), sea lions ( <i>Eumetopias jubata</i> and <i>Zalophus californianus</i> ), horses ( <i>Equus</i> ), camels ( <i>Camelops hesternus</i> ), bison ( <i>Bison</i> ), rabbits (Lagomorpha), sharks and rays, bony fish	Unknown
4447 (SDNHM)	Palos Verdes Sand Formation (Pleistocene)	Sharks, rays, bryozoans, corals, worms, snails, bivalves, scaphopods, barnacles, chitons, crabs, sea stars, bony fish, birds, seals, camels, even-toed ungulates	Unknown

**PALEONTOLOGICAL RESOURCES SENSITIVITY ANALYSIS**

The Holocene-age deposits in the project area have low sensitivity, but Pleistocene-age alluvial sediments may underlie these younger sediments at a relatively shallow depth. The NHMLAC records search results indicate that potentially fossil-bearing units may underlie the project area since Pleistocene-age deposits outside of the project area have contained fossils. Therefore, sediments in the project area are considered to have paleontological sensitivity increasing with depth or Low-to-High Sensitivity.

## **FINDINGS AND RECOMMENDATIONS**

### **CULTURAL RESOURCES**

The SCCIC records search, literature and historical map review, NAHC consultation, and field survey identified no historic resources, as defined by CEQA Section 15064.5(a), within the project area. Four *Chione* sp. shell fragments and one historic ceramic fragment were identified but are isolates in a disturbed context and do not meet the criteria of a historic resource. Three buildings will be demolished for the project, but they are not historic in age and so were not recorded, and no further work is recommended for these resources.

Sensitivity for buried archaeological resources is low at the surface but increases to moderate in undisturbed deposits. There is a potential for disturbing previously unknown archaeological resources during excavation into native soil. As such, archaeological monitoring is recommended during the construction of the project. The archaeologist shall inform all construction personnel prior to construction activities about the proper procedures in the event of an archaeological discovery. The preconstruction training shall be held in conjunction with the project's initial on-site safety meeting and shall explain the importance and legal basis for the protection of significant archaeological resources. In the event that archaeological resources (artifacts or features) are exposed during ground-disturbing activities, construction activities in the immediate vicinity of the discovery shall be halted while the on-call archaeologist is contacted. The resource shall be evaluated for significance, and tribal consultation shall be conducted in the case of a tribal resource. If the discovery proves to be significant, the long-term disposition of any collected materials should be determined in consultation with the affiliated tribe(s), where relevant.

### **PALEONTOLOGICAL**

No significant fossils have been previously recovered from the project area, but several vertebrate and invertebrate fossils have been recovered from nearby (within 5 miles of the project area) exposures of rock formations anticipated also to underlie the project area. The project area has low sensitivity for paleontological resources. However, the project area's geology may include Pleistocene-age deposits at unknown depths, suggesting that project-related ground-disturbing activities have the potential to destroy or otherwise adversely impact significant paleontological resources below young Holocene-age soils at unknown depths within the project area. The following recommendations will ensure that any impacts to paleontological resources are avoided:

Prior to issuance of a grading permit for projects involving ground disturbance, the project applicant shall consult with a geologist or paleontologist to confirm whether the grading would occur at depths that could encounter highly sensitive sediments for paleontological resources. If confirmed that underlying sediments may have high sensitivity, construction activity shall be monitored by a qualified paleontologist. The paleontologist shall have the authority to halt construction during construction activity.

Because the project area is immediately underlain by Holocene sediments (low sensitivity) and the depth of these sediments is unknown, spot-check monitoring is recommended to identify potential fossils and the lithological transition to Pleistocene sediments. If Pleistocene-aged



## **MICHAEL BAKER INTERNATIONAL**

### **RE: CULTURAL AND PALEONTOLOGICAL RESOURCES IDENTIFICATION MEMORANDUM FOR THE COSTA MESA HIVE LIVE PROJECT, CITY OF COSTA MESA, ORANGE COUNTY, CALIFORNIA**

**Page 18**

sediments are discovered at depth, monitoring must transition to full-time as ground-disturbing activities occur at or below this identified depth because these Pleistocene units have been identified as having high sensitivity for paleontological resources.

In the event of any fossil discovery, regardless of depth or geologic formation, construction work shall halt within a 50-foot radius of the find until a Qualified Paleontologist can determine its significance. Significant fossils shall be recovered, prepared to the point of curation, identified by qualified experts, listed in a database to facilitate analysis, and deposited in a designated paleontological curation facility in accordance with the standards of the Society of Vertebrate Paleontology (2010). The most likely repository is the Natural History Museum of Los Angeles County (NHMLAC). The repository shall be identified, and a curatorial arrangement shall be signed prior to the collection of the fossils.

### **PREPARER QUALIFICATIONS**

This document was prepared by James Daniels, MA, RPA, Senior Archaeologist and Principal Investigator; Rachel Garcia, MA, Associate Archaeologist; and Peter Kloess, PhD, Principal Investigator for paleontology. Rachel Garcia conducted the field survey. Marc Beherec, PhD, RPA, reviewed the document for quality assurance.

#### **JAMES DANIELS, MA, RPA, PRINCIPAL INVESTIGATOR/SENIOR ARCHAEOLOGIST**

Mr. Daniels has 17 years of cultural resources management experience in California, Nevada, and North Carolina. His experience includes archaeological surveys, evaluations of historic and precontact sites for listing in the California and National Registers, site mitigation data recoveries, mitigation monitoring, and preparation of archaeological resource management reports and cultural resources technical reports. As a senior archaeologist, he supports projects needing compliance with CEQA, National Environmental Policy Act, National Historic Preservation Act Section 106, Native American Graves Protection and Repatriation Act, Assembly Bill 52, US Army Corps of Engineers 404 permits, and local cultural resource regulations. He assists with environmental impact statements/reports and alternative mitigation measures for clients, including interpretive signage, informative website design, brochures, and ethnographic studies. He also assists in Native American consultation and coordination of Native American monitoring. Mr. Daniels provides advanced technical services for clients, including geophysical surveys with ground-penetrating radar, obsidian and ceramic sourcing using portable X-ray fluorescence, photogrammetry, and GIS predictive modeling and data collection using Esri Field Maps. He meets the Secretary of the Interior's Professional Qualification Standards for archaeology and historic preservation.

**Rachel Garcia, MA**, is an archaeologist specializing in prehistoric and historical archaeology with cultural resource management experience in California and the American Southwest, notably New Mexico. Her experience encompasses archaeological surveys, mapping, and excavation techniques. Additionally, she earned her MA in history where she has honed her skills in historical pedagogy, critical source analysis, research methodologies, and historical documentation



**MICHAEL BAKER INTERNATIONAL****RE: CULTURAL AND PALEONTOLOGICAL RESOURCES IDENTIFICATION MEMORANDUM FOR THE COSTA MESA HIVE LIVE PROJECT, CITY OF COSTA MESA, ORANGE COUNTY, CALIFORNIA****Page 19**

interpretation. Ms. Garcia meets the Secretary of the Interior's Professional Qualification Standards for history.

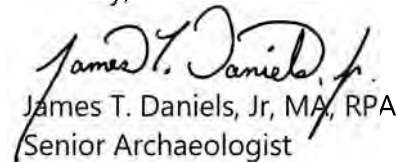
**MARC BEHEREC, PHD, RPA, PROJECT MANAGER/ARCHAEOLOGICAL TEAM LEAD**

Dr. Beherec has more than 20 years of experience in prehistoric and historical archaeology and cultural resources management. His experience includes writing technical reports, including the National Environmental Policy Act, National Historic Preservation Act, and CEQA compliance documents. He has supervised and managed all phases of archaeological fieldwork, including survey, Phase II testing and evaluations, Phase III data recovery, and archaeological construction monitoring at sites throughout Southern California. Dr. Beherec meets the Secretary of the Interior's Professional Qualification Standards for prehistory and historical archaeology and is listed in the Register of Professional Archaeologists.

**PETER KLOESS, PHD, SENIOR PALEONTOLOGIST/PRINCIPAL INVESTIGATOR**

Dr. Kloess has over 20 years of experience in paleontology, with eight years in paleontology mitigation, working as a project paleontologist, project coordinator, and principal investigator. His experience includes public and private consultation, field monitoring, excavation, and laboratory research on projects across the western United States, predominantly in California. He has consulting experience with a range of projects, including construction, transportation, utility, transmission, monitoring, and surveys, as well as experience recovering a diversity of fossils from project sites, such as marine invertebrates, microfossils, plants, small mammals and birds, large marine and terrestrial mammals, and dinosaurs. Dr. Kloess also has extensive experience in paleontological museum collections and lab settings. He has worked on and co-led scientific excavations of large mammals and dinosaurs in California, Utah, New Mexico, and Montana. Dr. Kloess has served as a lab preparator and assistant curator for paleontology museums in California and Montana, where his duties included manual preparation of specimens, casting, jacketing, public outreach, cataloging, and curation. In addition to extensive field and curation work, Dr. Kloess has researched, written, and published articles for paleontology publications. Several of his research projects have relied on paleontology and modern comparative collections housed in institutions across California, spanning geologic time from the Cretaceous period to the present. He meets the Society of Vertebrate Paleontology standards for a Qualified Professional Paleontologist.

Sincerely,



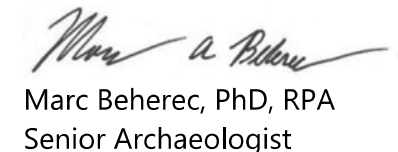
James T. Daniels, Jr, MA, RPA  
Senior Archaeologist



Rachel Garcia MA  
Archaeologist



Peter Kloess, PhD  
Paleontologist



Marc Beherec, PhD, RPA  
Senior Archaeologist

**MICHAEL BAKER INTERNATIONAL**

**RE: CULTURAL AND PALEONTOLOGICAL RESOURCES IDENTIFICATION MEMORANDUM FOR THE  
COSTA MESA HIVE LIVE PROJECT, CITY OF COSTA MESA, ORANGE COUNTY, CALIFORNIA**

**Page 20**

Attachments:

**Attachment 1** – Figures

**Attachment 2** – SCCIC Records Search Results

**Attachment 3** – NAHC Sacred Lands File Search Results

**Attachment 4** – Paleontological Record Search Results

## MICHAEL BAKER INTERNATIONAL

### RE: CULTURAL AND PALEONTOLOGICAL RESOURCES IDENTIFICATION MEMORANDUM FOR THE COSTA MESA HIVE LIVE PROJECT, CITY OF COSTA MESA, ORANGE COUNTY, CALIFORNIA

Page 21

## REFERENCES

- ACHP (Advisory Council on Historic Preservation). n.d. "Santa Ana, California." Accessed March 2024. <https://www.achp.gov/preserve-america/community/santa-ana-california>.
- Arnold, Jeanne E., Michael Walsh, and Sandra E. Hollimon. 2004. "The Archaeology of California." *Journal of Archaeological Research* 12(1):1–73.
- Bean, Lowell John, and Florence C. Shipek. 1978. Luiseño. In *Handbook of North American Indians*, vol. 8, pp. 550–563. Edited by Robert F. Heizer. Smithsonian Institution, Washington, DC.
- Bean, Lowell J. and Charles R. Smith. 1978. "Gabrielino." In *California*, edited by Robert F. Heizer, 538-549. Washington, DC: Smithsonian Institution.
- Bedrossian, T. L., P. Roffers, C. A. Hayhurst, J. T. Lancaster, and W. R. Short. 2012. Geologic compilation of Quaternary surficial deposits in southern California (2012 Revision), 1:100,000 scale. California Geological Survey, Special Report 217. [https://ngmdb.usgs.gov/Prodesc/proddesc\\_115626.htm](https://ngmdb.usgs.gov/Prodesc/proddesc_115626.htm).
- Bergeland, Sam, Paul Kim, and John F. O'Brien. 2024. *Geotechnical Investigation: The Hive – Proposed Multifamily Residential Development Susan Stree and West Sunflower Street Costa Mesa, California*. Prepared by Nova Services, San Clemente, CA. Submitted to Hive Live, Legacy Partners, Irvine, CA.
- Boscana, Geronimo. 1978. *Chinigchinich*. A Revised and Annotated Version of Alfred Robinson's Translation. Annotated by John P. Harrington. Banning, CA: Malki Museum Press.
- CGS (California Geological Society). 2002. "California Geomorphic Provinces, Note 36." <https://www.conservation.ca.gov/cgs/Documents/Publications/CGS-Notes/CGS-Note-36.pdf>.
- Erlandson, Jon M., Rick C. Torben, Terry L. Jones, and Judith F. Porcasi. 2007. "One If by Land, Two If by Sea: Who Were the First Californians?" in *California Prehistory: Colonization, Culture, and Complexity*, edited by Terry L. Jones and Kathryn Klar. Lanham, MD: AltaMira Press.
- Goddard, Francelia B. and Allen W. Goddard. 1988. "Santa Ana History." In *A Hundred Years of Yesterdays: A Centennial History of the People of Orange County and their Communities*. Santa Ana, CA: Orange County Centennial, Inc. <https://www.santaanahistory.com/santa-ana-history>.
- Hale, Horatio. 1846. *United States Exploring Expedition During the Years 1838, 1839, 1840, 1841, 1842 Under the Command of Charles Wilkes, U.S.N. Ethnography and Philology*. Philadelphia: Lea and Blanchard.

## MICHAEL BAKER INTERNATIONAL

### RE: CULTURAL AND PALEONTOLOGICAL RESOURCES IDENTIFICATION MEMORANDUM FOR THE COSTA MESA HIVE LIVE PROJECT, CITY OF COSTA MESA, ORANGE COUNTY, CALIFORNIA

Page 22

Harrington, John P. (1934) 1978. Annotations. Pp. 91–247 in *Chinigchinich*, by Geronimo Boscana. Banning, CA: Malki Museum Press.

Huntington Library. 1860. Plat of the Santiago de Santa Ana Rancho.  
<https://hdl.huntington.org/digital/collection/p15150coll4/id/11636>.

Jackson, Robert H. 1999. "Agriculture, Drought & Chumash Congregation in the California Missions (1782-1834)." *California Mission Studies Association*. Articles, May Newsletter.

Kroeber, A. L. 1925. *Handbook of the Indians of California*. Reprint. Washington, DC: Bureau of American Ethnology.

Langenheim, V.E., T.-C. Lee, S. Biehler, A.C. Jachens, and D.M. Morton. 2006. Isostatic gravity map with geology of the Santa Ana 30' x 60' quadrangle, southern California, 1:100,000 scale. U.S. Geological Survey, Scientific Investigations Map SIM-2951.  
[https://ngmdb.usgs.gov/Prodesc/proddesc\\_78146.htm](https://ngmdb.usgs.gov/Prodesc/proddesc_78146.htm).

McCawley, William. 1996. *The First Angelinos: The Gabrielino Indians of Los Angeles*. Banning, CA: Malki Museum Press.

Merriam, C. Hart. 1905. Vocabularies of North American Indians.  
[https://archive.org/details/bancroft\\_chartmerriam\\_1556\\_49/page/n81/mode/2up?view=theater](https://archive.org/details/bancroft_chartmerriam_1556_49/page/n81/mode/2up?view=theater)

Meyer, L. 1981. "Los Angeles, 1781–1981." *California History*, spring. Los Angeles: California Historical Society.

Moratto, Michael J. 1984. *California Archaeology*. New York: Academic Press.

Morton, D. M. and F. K. Miller. 2006. Geologic map of the San Bernardino and Santa Ana 30' x 60' quadrangles, California, 1:100,000 scale. U.S. Geological Survey, Open-File Report OF-2006-1217. [https://ngmdb.usgs.gov/Prodesc/proddesc\\_78686.htm](https://ngmdb.usgs.gov/Prodesc/proddesc_78686.htm).

NETR (National Environmental Title Research). n.d. Subject matter search. Aerial photograph database. Accessed March 2024. <https://www.historicaerials.com/viewer>.

NRCS (Natural Resources Conservation Service). n.d. Electronic georeferenced soil map. Accessed March 2024. <https://websoilsurvey.sc.egov.usda.gov/App/WebSoilSurvey.aspx>.

OHP (California Office of Historic Preservation). 2022. Archaeological Determinations of Eligibility for Orange County. Sacramento: California Department of Parks and Recreation. Electronic database. On file at the South Central Coastal Information Center.

**MICHAEL BAKER INTERNATIONAL**

**RE: CULTURAL AND PALEONTOLOGICAL RESOURCES IDENTIFICATION MEMORANDUM FOR THE COSTA MESA HIVE LIVE PROJECT, CITY OF COSTA MESA, ORANGE COUNTY, CALIFORNIA**

**Page 23**

- . 2024a. California Inventory of Historic Resources. Sacramento: California Department of Parks and Recreation. Electronic database. Accessed March 2024. <https://ohp.parks.ca.gov/ListedResources/?view=county&criteria=30>.
- . 2024b. California Points of Historical Interest. Sacramento: California Department of Parks and Recreation. Electronic database. Accessed March 2024. <https://ohp.parks.ca.gov/ListedResources/?view=county&criteria=30>.
- . 2024c. California Historical Landmarks. Sacramento: California Department of Parks and Recreation. Electronic database. Accessed March 2024. <https://ohp.parks.ca.gov/ListedResources/?view=county&criteria=30>.
- . 2024d. Built Environment Resources Directory for Orange County. Electronic database. Accessed March 2024. [https://ohp.parks.ca.gov/?page\\_id=30338](https://ohp.parks.ca.gov/?page_id=30338).
- O'Neil, Stephen, and Nancy H Evans. 1980. "Notes on historical Juaneno villages and geographical features." *Journal of California and Great Basin Anthropology* 2 (2): 226-232.
- O'Neil, Stephen. 1988. "Their Mark Upon the Land: Native American Place Names in Orange County and Adjacent Areas." In *Memoirs of the Natural History Foundation of Orange County, Volume 2: The Natural and Social Sciences of Orange County*, edited by Henry C. Koerper. Newport Beach, CA: Natural History Foundation of Orange County.
- OrangeCounty.net. n.d. "The History." Accessed March 2024. [https://www.orangecounty.net/cities/SantaAna\\_history.html](https://www.orangecounty.net/cities/SantaAna_history.html).
- PBDB (The Paleobiology Database). n.d. Subject matter search. Electronic database. Accessed March 2024. <https://paleobiodb.org/#/>.
- Perry, Joyce Stanfield. 2023. Letter to Chris Reese and Thalia Gomez RE: JBMIAN-Belardes Comments on Draft Archaeological Resources Technical Report and CSULB Master Plan DEIR. October 20, 2023. On file, California State University, Long Beach.
- Phillips, George Harwood. 2010. *Vineyards and Vaqueros: Indian Labor and the Economic Expansion of Southern California, 1771–1877*. Norman, OK: Arthur H. Clark Co.
- Richardson, Rob. 1994. "Santa Ana at 125." In *Santa Ana, An Illustrated History*, by Diann Marsh. Encinitas, CA: Heritage Publishing Company. <https://www.santaanahistory.com/santaanaat125>.
- Rogers, T. H. 1965. Geologic map of California: Santa Ana sheet, 1:250,000 scale. Geologic Atlas of California GAM-19.

## MICHAEL BAKER INTERNATIONAL

### RE: CULTURAL AND PALEONTOLOGICAL RESOURCES IDENTIFICATION MEMORANDUM FOR THE COSTA MESA HIVE LIVE PROJECT, CITY OF COSTA MESA, ORANGE COUNTY, CALIFORNIA

Page 24

SDNHM (San Diego Natural History Museum). n.d. Subject matter search. Paleontology Collections Database. Accessed March 2024. <https://www.sdnhm.org/science/paleontology/resources/collection-database>.

Society of Vertebrate Paleontology. 2010. "Standard Procedures for the Assessment and Mitigation of Adverse Impacts to Paleontological Resources." [https://vertpaleo.org/wp-content/uploads/2021/01/SVP\\_Impact\\_Mitigation\\_Guidelines.pdf](https://vertpaleo.org/wp-content/uploads/2021/01/SVP_Impact_Mitigation_Guidelines.pdf).

Sutton, Mark Q. and Jill K. Gardner. 2010. "Reconceptualizing the Encinitas Tradition of Southern California." *Pacific Coast Archaeological Society Quarterly* 42 (4): 1-64.

UCMP (University of California Museum of Paleontology). n.d. Locality Search. Electronic database. Accessed March 2024. <https://ucmpdb.berkeley.edu/loc.html>.

UCSB (University of California, Santa Barbara). 2024. Subject matter search. Geospatial Collection. Aerial photograph database. [https://mil.library.ucsb.edu/ap\\_indexes/FrameFinder/](https://mil.library.ucsb.edu/ap_indexes/FrameFinder/).

US Army Corps of Engineers. 2014. Public Notice for SPL-2014-00227-SME: Application for Permit, Greenville-Banning Channel Flood Risk Management Improvement Project. [https://www.spl.usace.army.mil/Portals/17/docs/publicnotices/P.N. %20SPL 2014 00227 SME.pdf?ver=IDGJBur6vhWPpGyIT3o-QA%3d%3d](https://www.spl.usace.army.mil/Portals/17/docs/publicnotices/P.N.%20SPL%202014%2000227%20SME.pdf?ver=IDGJBur6vhWPpGyIT3o-QA%3d%3d).

USDA (US Department of Agriculture). 1997. "Bolsa Series." [https://soilseries.sc.egov.usda.gov/OSD\\_Docs/B/BOLSA.html](https://soilseries.sc.egov.usda.gov/OSD_Docs/B/BOLSA.html).

USGS (US Geological Survey). 1896. *Santa Ana, California*. 1:62,500. Electronic resource map. <https://ngmdb.usgs.gov/topoview/viewer/#>.

———. 1901. *Santa Ana, California*. 1:62,500. Electronic resource map. <https://ngmdb.usgs.gov/topoview/viewer/#>.

———. 1932. *Newport Beach, California*. 1:31,680. Electronic resource map. <https://ngmdb.usgs.gov/topoview/viewer/#>.

———. 1935. *Newport Beach, California*. 1:31,680. Electronic resource map. <https://ngmdb.usgs.gov/topoview/viewer/#>.

———. 1942. *Santa Ana, California*. 1:62,500. Electronic resource map. <https://ngmdb.usgs.gov/topoview/viewer/#>.

———. 1951. *Newport Beach, California*. 1:24,000. Electronic resource map. <https://ngmdb.usgs.gov/topoview/viewer/#>.

**MICHAEL BAKER INTERNATIONAL**

**RE: CULTURAL AND PALEONTOLOGICAL RESOURCES IDENTIFICATION MEMORANDUM FOR THE  
COSTA MESA HIVE LIVE PROJECT, CITY OF COSTA MESA, ORANGE COUNTY, CALIFORNIA**

**Page 25**

———. 1965a. *Newport Beach, California*. 1:24,000. Revised 1968. Electronic resource map.  
<https://ngmdb.usgs.gov/topoview/viewer/#>.

———. 1965b. *Newport Beach, California*. 1:24,000. Revised 1982. Electronic resource map.  
<https://ngmdb.usgs.gov/topoview/viewer/#>.

———. 1974. *Costa Mesa, California*. 1:24,000. Revised 1975. Electronic orthophotoquad map.  
<https://ngmdb.usgs.gov/topoview/viewer/#>.

Warren, Claude N. 1968. "Cultural Tradition and Ecological Adaptation on the Southern California Coast." *Archaic Prehistory in the Western United States*. Portales, NM: Eastern New Mexico University.


# **Attachment 1**

## **Figures**



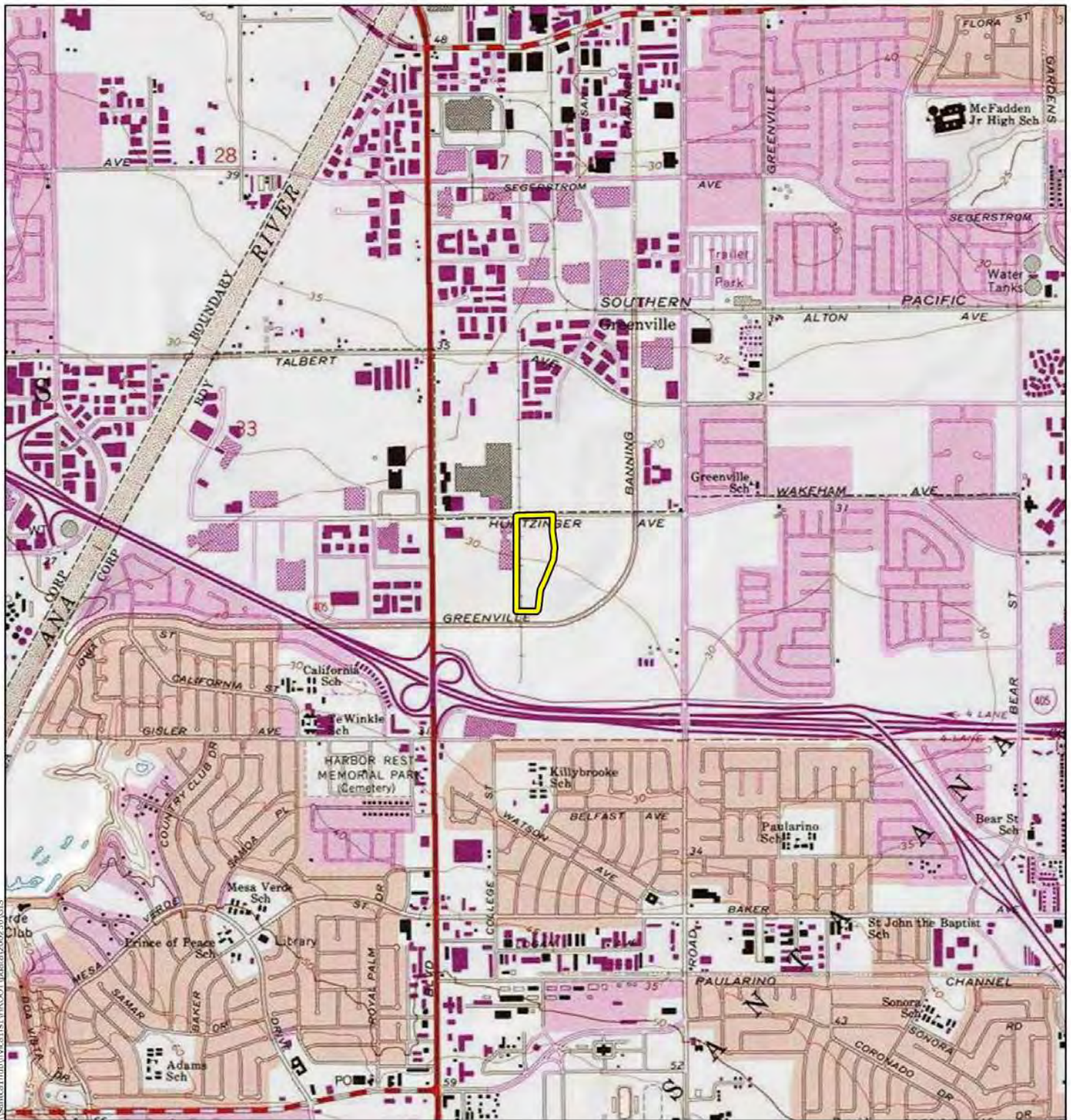


### Legend

 Project Area







### Legend


 Project Area

NEWPORT BEACH USGS 7.5-MINUTE TOPO QUAD  
T 05 S R 10 W, SECTION 34  
PART OF THE SANTIAGO DE SANTA ANA LANDGRANT





### Legend

 Costa Mesa Hive Live

# **Attachment 2**

## **SCCIC Records Search Results**

# Report Detail: OR-01016

Costa Mesa Hive Jive

---

## Identifiers

Report No.: OR-01016

Other IDs:

Cross-refs:

## Citation information

Author(s): Leonard, Nelson N. III

Year: 1975

Title: Environmental Impact Evaluation: Route Alternates Between the Michelson Treatment Plant and Plants on the Santa Ana River, Orange County, California

Affiliation: University of California, Riverside

No. pages: 9

No. maps:

Attributes: Archaeological, Field study

Inventory size: QC

Disclosure:

Collections:

## General notes

## Associated resources

Primary No.	Trinomial	Name
P-30-000057	CA-ORA-000057	San Joaquin Gun Club
P-30-000076	CA-ORA-000076	Eberhart's OR-9
P-30-000121	CA-ORA-000121/H	Fluor Site
P-30-000164	CA-ORA-000164	
P-30-000165	CA-ORA-000165	BANNING TRACT, PORTION "A
P-30-000170	CA-ORA-000170	STRANDT #107
P-30-000174	CA-ORA-000174	TRACT 1362
P-30-000193	CA-ORA-000193	
P-30-000347	CA-ORA-000347	
P-30-000348	CA-ORA-000348	VOIDED
P-30-000351	CA-ORA-000351	

No. resources: 11

Has informals:

## Location information

County(ies): Orange

USGS quad(s): NEWPORT BEACH

Address:

PLSS:

## Database record metadata

Date	User	
Entered: 5/5/2008	jay	
Last modified: 2/19/2015	agarcia	
IC actions: Date	User	Action taken
5/6/2008	jay	Appended records from old Surveys database.
2/19/2015	agarcia	GIS QC

Record status:

## Report Detail: OR-01952

Costa Mesa Hive Jive

---

### Identifiers

*Report No.:* OR-01952

*Other IDs:*

*Cross-refs:*

### Citation information

*Author(s):* Casen, George

*Year:* 1996

*Title:* Historic Property Survey Report, Route 73 and I-405 Improvements From Birch Street to I-405, From Bear Street to Euclid Street

*Affiliation:* Caltrans

*No. pages:* 34

*No. maps:*

*Attributes:* Archaeological, Architectural/Historical, Field study

*Inventory size:* QC

*Disclosure:* Not for publication

*Collections:* No

---

*Sub-design.:* A

*Author(s):* Huey, Gene

*Year:* 1989

*Title:* Highway Project Description District 12, Orange County, Route 405

*Affiliation:* LSA

*Report type(s):* Archaeological, Field study

*Inventory size:*

*No. pages:* 3

*Disclosure:* Not for publication

*Collections:* No

*PDF Pages:* 12-14

---

*Sub-design.:* B

*Author(s):* McLean, Deborah and Gene Huey

*Year:* 1995

*Title:* Highway Project Description District 12, Orange County, Route 73/405

*Affiliation:* LSA

*Report type(s):* Archaeological, Field study

*Inventory size:*

*No. pages:* 6

*Disclosure:* Not for publication

*Collections:* No

*PDF Pages:* 6-11

### General notes

### Associated resources

*No. resources:* 0

*Has informals:* No

### Location information

*County(ies):* Orange

*USGS quad(s):* NEWPORT BEACH, TUSTIN

*Address:*

*PLSS:*

## Report Detail: OR-01952

Costa Mesa Hive Jive

---

### Database record metadata

	<i>Date</i>	<i>User</i>	
	<i>Entered:</i> 5/5/2008	jay	
	<i>Last modified:</i> 6/8/2023	ikott	
<i>IC actions:</i>	<i>Date</i>	<i>User</i>	<i>Action taken</i>
	5/6/2008	jay	Appended records from old Surveys database.
	2/20/2015	agarcia	GIS QC
	11/23/2022	aswitals	A.S.
<i>Record status:</i>	Database Complete		

## Report Detail: OR-02230

Costa Mesa Hive Jive

---

### Identifiers

Report No.: OR-02230

Other IDs: 

Type	Name
Cellular	

Cross-refs:

### Citation information

Author(s): Duke, Curt

Year: 2000

Title: Cultural Resource Assessment for Modifications to Pacific Bell Wireless Facility CM 063-34, County of Orange, California

Affiliation: LSA Associates, Inc.

No. pages: 12

No. maps:

Attributes: Archaeological, Field study

Inventory size: QC

Disclosure: Not for publication

Collections: No

---

Sub-design.: A

Author(s): Bonner, Wayne H.

Year: 1998

Title: Cultural Resources Records Search and Literature Review Report for a Pacific Bell Mobile Services Telecommunications Facility: CM 063-34 in the City of Santa Ana, California

Affiliation: Chambers Group, Inc.

Report type(s): Literature search

Inventory size:

No. pages: 9

Disclosure: Not for publication

Collections: No

PDF Pages: 4-12

### General notes

### Associated resources

No. resources: 0

Has informals:

### Location information

County(ies): Orange

USGS quad(s): NEWPORT BEACH

Address:

PLSS:

### Database record metadata

Date	User	
Entered: 5/5/2008	jay	
Last modified: 12/6/2022	brookemae	
IC actions:	Date	User
	5/6/2008	jay
	2/23/2015	agarcia
	12/6/2022	brookemae
Action taken		
		Appended records from old Surveys database.
		GIS QC
		database complete
Record status:		Database Complete



## Report Detail: OR-02550

Costa Mesa Hive Jive

---

### Identifiers

*Report No.:* OR-02550

<i>Other IDs:</i>	<i>Type</i>	<i>Name</i>
	Cellular	

*Cross-refs:*

### Citation information

*Author(s):* Duke, Curt

*Year:* 2002

*Title:* Cultural Resource Assessment Cingular Wireless Facility No. Sc 035-05 Orange County, California

*Affiliation:* LSA Associates, Inc.

*No. pages:* 8

*No. maps:*

*Attributes:* Literature search

*Inventory size:* QC

*Disclosure:* Not for publication

*Collections:* No

### General notes

### Associated resources

*No. resources:* 0

*Has informals:*

### Location information

*County(ies):* Orange

*USGS quad(s):* NEWPORT BEACH

*Address:*

*PLSS:*

### Database record metadata

	<i>Date</i>	<i>User</i>	
<i>Entered:</i>	5/5/2008	jay	
<i>Last modified:</i>	12/19/2022	brookemae	
<i>IC actions:</i>	<i>Date</i>	<i>User</i>	<i>Action taken</i>
	5/6/2008	jay	Appended records from old Surveys database.
	2/23/2015	agarcia	GIS QC
	12/19/2022	brookemae	database complete
<i>Record status:</i>	Database Complete		

# Report Detail: OR-03041

Costa Mesa Hive Jive

---

## Identifiers

*Report No.:* OR-03041

*Other IDs:*

*Cross-refs:*

## Citation information

*Author(s):* Wlodarski, Robert J.

*Year:* 2006

*Title:* LLC Proposed Wireless Telecommunications Site LA0872a (Val Mesa Medical), Located at 100 East Valenica Mesa Drive, Fullerton, Orange County, California 92835

*Affiliation:* Cellular, Archaeological Resource, Evaluations

*No. pages:* 17

*No. maps:*

*Attributes:* Archaeological, Field study

*Inventory size:* <1 ac

*Disclosure:* Not for publication

*Collections:* No

## General notes

16 Historic Bldgs mentioned, no primary numbers assigned

## Associated resources

*No. resources:* 0

*Has informals:*

## Location information

*County(ies):* Orange

*USGS quad(s):* LA HABRA

*Address:*

*PLSS:*

## Database record metadata

	<i>Date</i>	<i>User</i>	
<i>Entered:</i>	5/5/2008	jay	
<i>Last modified:</i>	1/19/2023	brookemae	
<i>IC actions:</i>	<i>Date</i>	<i>User</i>	<i>Action taken</i>
	5/6/2008	jay	Appended records from old Surveys database.
	1/19/2023	brookemae	database complete
<i>Record status:</i>	Database Complete		

## Report Detail: OR-03776

Costa Mesa Hive Jive

---

### Identifiers

Report No.: OR-03776

Other IDs:

Cross-refs:

### Citation information

Author(s): Padon, Beth

Year: 2000

Title: Historic Property Survey Report for Harbor Boulevard Smart Street Improvements, City of Garden Grove, Orange County, California.

Affiliation: Discovery Works, Inc.

No. pages: 70

No. maps:

Attributes: Archaeological, Field study

Inventory size: QC

Disclosure: Not for publication

Collections: No

---

Sub-design.: A

Author(s): Mc Elory, Sheila

Year: 2000

Title: Historic Architectural Survey Report for Harbor Boulevard Smart Street Project For the City of Garden Grove, California

Affiliation: CIRCA

Report type(s): Architectural/Historical, Evaluation, Field study

Inventory size:

No. pages: 18

Disclosure: Not for publication

Collections: No

PDF Pages: 28-45

### General notes

### Associated resources

Primary No.	Trinomial	Name
P-30-157376		12582 Lampson St
P-30-176876		12522 Blue Spruce
P-30-176877		12502 Blue Spruce
P-30-176878		12501 Blue Spruce
P-30-176879		12521 Blue Spruce
P-30-176880		12522 Sandalwood Ln
P-30-176881		12521 Sandalwood Ln
P-30-176882		12502 Sandalwood Ln
P-30-176883		12501 Sandalwood Ln
P-30-176884		12502 Twinleaf
P-30-176885		12521 Twinleaf
P-30-176886		12561 Laux Ave
P-30-176887		12512 Citruswood
P-30-176888		12502 Citruswood
P-30-176889		12501 Citruswood
P-30-176890		12512 Twintree
P-30-176891		12511 Twintree
P-30-176892		12361 Harbor Blvd
P-30-176893		12371 Harbor Blvd
P-30-176894		12381 Harbor Blvd
P-30-176895		12401 Harbor Blvd
P-30-176896		12411 Harbor Blvd

## Report Detail: OR-03776

Costa Mesa Hive Jive

---

P-30-176897	12421 Harbor Blvd
P-30-176898	12431 Harbor Blvd
P-30-176899	12451 Harbor Blvd
P-30-176900	12461 Harbor Blvd
P-30-176901	12471 Harbor Blvd
P-30-176902	12232 Homestead St
P-30-176903	12212 Homestead St
P-30-176904	12221 Homestead St
P-30-176905	12231 Homestead St
P-30-176906	12521 Aspenwood Ln
P-30-176907	12501 Aspenwood Ln
P-30-176908	12792 Palm St
P-30-176909	12362 El Rancho Pl
P-30-176910	12354 El Rancho Pl
P-30-176911	13650 Harbor
P-30-176912	12022 Quatro
P-30-176913	13821 Figueroa
P-30-176914	13791 Figueroa
P-30-176915	13771 Figueroa
P-30-176916	1509 N Harbor
P-30-176917	1513 N Harbor
P-30-176918	3802 W Westminster
P-30-176919	1406 N Harbor
P-30-176920	1402 N Harbor
P-30-176921	1221 N Harbor
P-30-176922	Frank's Lawnmowers
P-30-176923	913 N Harbor
P-30-176924	US Airweld Inc
P-30-176925	Botanica Nursery
P-30-176926	Cozy Corner Drive-In
P-30-176927	214 N Figueroa St
P-30-176928	222 N Harbor
P-30-176929	226 N Harbor
P-30-176930	322 N Harbor
P-30-176931	Kings Kars
P-30-176932	Khoa's Auto Service
P-30-176933	205 S Harbor
P-30-176934	217 S Harbor
P-30-176935	217 A & B S Harbor
P-30-176936	217 C & E S Harbor
P-30-176937	217 D & F S Harbor
P-30-176938	Auto Body Supplies
P-30-176939	423 S Harbor
P-30-176940	329 S Harbor
P-30-176941	329 S Harbor
P-30-176942	329 S Harbor
P-30-176943	Ana Mesa Inn

No. resources: 69

Has informals: No

### Location information

County(ies): Orange

USGS quad(s): ANAHEIM, NEWPORT BEACH

Address: Address

Harbor Blvd.

City

Santa Ana

Assessor's parcel no.

Zip code

PLSS:

Report Detail: OR-03776

Costa Mesa Hive Jive

---

Database record metadata

<i>Date</i>		<i>User</i>	
<i>Entered:</i> 12/15/2009		mgalaz	
<i>Last modified:</i> 2/23/2023		brookemae	
<i>IC actions:</i> <i>Date</i>		<i>User</i>	<i>Action taken</i>
2/25/2015		agarcia	GIS QC
2/23/2023		brookemae	database complete
<i>Record status:</i> Database Complete			

## Report Detail: OR-03977

Costa Mesa Hive Jive

---

### Identifiers

Report No.: OR-03977

Other IDs:	Type	Name
	Cellular	

Cross-refs:

### Citation information

Author(s): Futon, Phil and Terri Fulton

Year: 2007

Title: Cutural Resource Assessment, Verizon Wireless Services, Calvary Chapel Facility, City of Santa Ana, Orange County, California

Affiliation: LSA Associates, Inc.

No. pages: 10

No. maps:

Attributes: Archaeological, Field study

Inventory size: QC

Disclosure: Not for publication

Collections: No

### General notes

### Associated resources

No. resources: 0

Has informals: No

### Location information

County(ies): Orange

USGS quad(s): NEWPORT BEACH

Address:

PLSS:

### Database record metadata

	Date	User	
Entered:	4/18/2011	agarcia	
Last modified:	3/2/2023	aswitals	
IC actions:	Date	User	Action taken
	2/25/2015	agarcia	GIS QC
	3/2/2023	aswitals	A.S.
Record status:	Database Complete		

## Report Detail: OR-04007

Costa Mesa Hive Jive

---

### Identifiers

Report No.: OR-04007

Other IDs:	Type	Name
	Cellular	

Cross-refs:

### Citation information

Author(s): Fulton, Phil and Terri Fulton

Year: 2009

Title: Cultural Resource Assessment Verizon Wireless Services Harbor Rest Relo Facility, City of Costa Mesa, Orange County, California

Affiliation: LSA Associates, Inc.

No. pages: 51

No. maps:

Attributes: Archaeological, Literature search

Inventory size: QC

Disclosure: Not for publication

Collections: No

### General notes

### Associated resources

No. resources: 0

Has informals: No

### Location information

County(ies): Orange

USGS quad(s): NEWPORT BEACH

Address: Address

City

Costa Mesa

Assessor's parcel no.

Zip code

PLSS:

### Database record metadata

Date

User

Entered: 7/18/2011

agarcia

Last modified: 3/7/2023

aswitals

IC actions: Date

User

Action taken

2/25/2015

agarcia

GIS QC

3/7/2023

aswitals

A.S.

Record status: Database Complete

# Report Detail: OR-04172

Costa Mesa Hive Jive

---

## Identifiers

*Report No.:* OR-04172

*Other IDs:*

*Cross-refs:*

## Citation information

*Author(s):* Chasteen, Carrie

*Year:* 2011

*Title:* Historic Property Survey Report San Diego Freeway (I-405) Improvement Project SR-73 to I-605, Orange and Los Angeles Counties

*Affiliation:* Parsons

*No. pages:* 467

*No. maps:*

*Attributes:* Other research

*Inventory size:* QC

*Disclosure:*

*Collections:*

## General notes

Also recorded as LA-11607

## Associated resources

<i>Primary No.</i>	<i>Trinomial</i>	<i>Name</i>
P-19-189879		1627 Stevely Ave
P-19-189880		7037 E El Cedral St
P-19-189881		6979 E El Cedral St
P-19-189882		1911 N Hidden Ln
P-19-189883		1921 N Hidden Ln
P-19-189884		1967 N Hidden Ln
P-19-189885		2015 N Hidden Lane
P-19-189886		7140 E Atherton Dr
P-19-189887		7100 E Atherton Dr
P-19-189888		1819 Lees Ave
P-19-189890		7800 E Tarma St
P-19-189891		7801 E Tibana St
P-19-189892		7806 E Timor St
P-19-189893		7800 E Timor St
P-19-189894		7801 E Torin St
P-19-189895		7805 E Torin St
P-19-189896		7801 E Turbo St
P-19-189897		7805 E Turbo St
P-19-189898		7820 E Ritchie St
P-19-189899		3645 N Pioneer Blvd
P-19-189900		3661 N Pioneer Blvd
P-19-189901		3665 N Pioneer Blvd
P-19-189902		3671 N Pioneer Blvd
P-19-189903		3675 N Pioneer Blvd
P-19-189904		3681 N Pioneer Blvd
P-19-189905		7856 E Berner St
P-19-189906		7850 E Berner St
P-19-189907		7840 E Berner St
P-19-189908		3021 Arlotte Ave
P-19-189909		3031 Arlotte Ave
P-19-189910		3041 Arlotte Ave
P-19-189911		3051 Arlotte Ave
P-19-189912		3061 Arlotte Ave
P-19-189913		3091 Arlotte Ave
P-19-189914		3101 Arlotte Ave



## Report Detail: OR-04172

Costa Mesa Hive Jive

---

P-19-189915		3111 Arlotte Ave
P-19-189916		3141 Arlotte Ave
P-19-189917		3145 Arlotte Ave
P-19-189918		3155 Arlotte Ave
P-19-189919		3161 Arlotte Ave
P-19-189920		3171 Arlotte Ave
P-19-189921		3175 Arlotte Ave
P-19-189922		3185 Arlotte Ave
P-19-189923		3195 Arlotte Ave
P-19-189924		Newcomb Academy
P-19-189925		1820 N Studebaker Rd
P-19-189926		2017 Ostrom Ave
P-19-189927		2129 Vuelta Grande Ave
P-30-000113	CA-ORA-000113	
P-30-000162	CA-ORA-000162	
P-30-001352	CA-ORA-001352	BIXBY RANCH SITE
P-30-001502	CA-ORA-001502	NWSSB-1
P-30-177135		1202 Parnell Pl
P-30-177136		1201 McCormack Ln
P-30-177137		3138 Bray Ln
P-30-177138		3154 Bray Ln
P-30-177139		3160 Bray Ln
P-30-177140		6462 Royal Oak Dr
P-30-177141		14612 Yucca Circle
P-30-177142		14582 Yucca Circle
P-30-177143		930 Cheyenne St
P-30-177144		934 Cheyenne St
P-30-177145		938 Cheyenne St
P-30-177146		948 Cheyenne St
P-30-177147		925 Cheyenne St
P-30-177148		956 Cheyenne St
P-30-177149		1056 Concord St
P-30-177150		1064 Concord St
P-30-177151		1072 Concord St
P-30-177152		3143 Pierce Ave
P-30-177153		1114 Charleston St
P-30-177154		1122 Charleston St
P-30-177155		1150 Charleston St
P-30-177156		1166 Charleston St
P-30-177157		1170 Charleston St
P-30-177158		1174 Charleston St
P-30-177159		3129 Boston Way
P-30-177160		1198 Boise Way
P-30-177161		1199 Boise Way
P-30-177162		1198 Bismark Way
P-30-177163		1199 Bismark Way
P-30-177164		1198 Augusta St
P-30-177165		3158 Yellowstone Dr
P-30-177166		13791 Olympic Ave
P-30-177167		13741 Olympic Ave
P-30-177168		13721 Olympic Ave
P-30-177169		13691 Olympic Ave
P-30-177170		13671 Olympic Ave
P-30-177171		13651 Olympic Ave
P-30-177172		502 Traverse Dr
P-30-177173		514 Traverse Dr
P-30-177174		538 Traverse Dr
P-30-177175		542 Traverse Dr
P-30-177176		546 Traverse Dr

## Report Detail: OR-04172

Costa Mesa Hive Jive

---

P-30-177177	562 Traverse Dr
P-30-177178	574 Traverse Dr
P-30-177179	582 Traverse Dr
P-30-177180	590 Traverse Dr
P-30-177181	594 Traverse Dr
P-30-177182	7801 McFadden Ave
P-30-177183	7681 Sugar Dr
P-30-177184	15452 Shasta Ln
P-30-177185	15431 Cascade Ln
P-30-177186	15421 Cascade Ln
P-30-177187	15411 Cascade Ln
P-30-177188	15401 Cascade Ln
P-30-177189	15381 Cascade Ln
P-30-177190	15371 Cascade Ln
P-30-177191	15351 Cascade Ln
P-30-177192	15341 Cascade Ln
P-30-177193	15321 Cascade Ln
P-30-177194	8841 De Ville Circle
P-30-177195	8822 Savoy Circle
P-30-177196	8791 Savoy Circle
P-30-177197	16522 Landau Ln
P-30-177198	16541 Landau Ln
P-30-177199	16511 Landau Ln
P-30-177200	9471 La Colonia Ave
P-30-177201	9486 La Luna Ave
P-30-177202	9456 La Luna Ave
P-30-177203	17398 Poplar St
P-30-177204	9437 La Luna Ave
P-30-177205	9450 El Sol Circle
P-30-177206	17330 Poplar St
P-30-177207	17318 Poplar St
P-30-177208	17292 Poplar St
P-30-177209	9181 El Cortez Ave
P-30-177210	9171 El Cortez Ave
P-30-177211	9157 El Cortez Ave
P-30-177212	9117 El Cortez Ave
P-30-177213	17540 Chestnut St
P-30-177214	17530 Chestnut St
P-30-177215	9300 Daisy Ave
P-30-177216	16853 Daisy Ave
P-30-177217	16789 Daisy Ave
P-30-177218	16763 Daisy Ave
P-30-177219	16741 Daisy Ave
P-30-177220	16645 Daisy Ave
P-30-177221	16635 Daisy Ave
P-30-177222	6902 Sowell Ave
P-30-177223	6862 Sowell Ave
P-30-177224	6856 Sowell Ave
P-30-177225	5831 Westminster Blvd
P-30-177226	Sherwood Plaza
P-30-177227	13882 Sherwood St
P-30-177228	6472 Sunside Ave
P-30-177229	6441 Walt St
P-30-177230	6462 Walt St
P-30-177231	6442 Walt St
P-30-177232	6372 Walt St
P-30-177233	5982 Meinhardt Rd
P-30-177234	13731 Springdale St
P-30-177235	5931 Meinhardt Rd

## Report Detail: OR-04172

Costa Mesa Hive Jive

---

P-30-177236	5921 Meinhardt Rd
P-30-177237	5871 Meinhardt Rd
P-30-177238	5851 Meinhardt Rd
P-30-177239	5811 Meinhardt Rd
P-30-177240	5751 Meinhardt Rd
P-30-177241	5711 Meinhardt Rd
P-30-177242	5671 Meinhardt Rd
P-30-177243	5661 Meinhardt Rd
P-30-177244	5641 Meinhardt Rd
P-30-177245	5601 Meinhardt Rd
P-30-177246	5541 Meinhardt Rd
P-30-177247	13712 Sioux Rd
P-30-177248	13691 Sioux Rd
P-30-177249	13652 Springdale St
P-30-177250	13642 Springdale St
P-30-177251	13622 Springdale St
P-30-177252	13582 Springdale St
P-30-177253	13011 Edwards St
P-30-177254	13021 Edwards St
P-30-177255	13012 Taos Pl
P-30-177256	13011 Taos Pl
P-30-177257	6312 Garden Grove Blvd
P-30-177258	5849 Vallecito Dr
P-30-177259	5847 Vallecito Dr
P-30-177260	5801 Vallecito Dr
P-30-177261	13121 Buckingham Circle
P-30-177262	8490 Drey Rd
P-30-177263	16430 Jody Circle
P-30-177264	16400 Jody Circle
P-30-177265	16320 Jody Circle
P-30-177266	7651 Benton Ave
P-30-177267	7641 Benton Ave
P-30-177268	7631 Benton Ave
P-30-177269	7601 Benton Ave
P-30-177270	7541 Benton Ave
P-30-177271	7521 Benton Ave
P-30-177272	7391 Natal Dr
P-30-177273	7331 Natal Dr
P-30-177274	7321 Natal Dr
P-30-177275	7271 Natal Dr
P-30-177276	16410 Tryon St
P-30-177277	16340 Timothy Ln
P-30-177278	16411 Laura Way
P-30-177279	16441 Laura Way
P-30-177280	Sterling Liquor Market
P-30-177281	8971 Neptune Circle
P-30-177282	16490 Van De Valde Way
P-30-177283	16481 Van De Velde Way
P-30-177284	16451 Venus Dr
P-30-177285	16391 Venus Dr
P-30-177286	16351 Venus Dr
P-30-177287	6802 Garden Grove Blvd
P-30-177288	6782 Garden Grove Blvd
P-30-177289	1860 St John Rd
P-30-177290	13040 Del Monte Dr
P-30-177291	1515 Northwood Rd
P-30-177292	13100 Oak Hills Dr
P-30-177293	13040 Oak Hills Dr
P-30-177294	1040 Foxburg Rd

## Report Detail: OR-04172

Costa Mesa Hive Jive

---

P-30-177295	136 College Park Dr
P-30-177296	156 College Park Dr
P-30-177297	196 College Park Dr
P-30-177298	200 College Park Dr
P-30-177299	212 College Park Dr
P-30-177300	216 College Park Dr
P-30-177301	224 College Park Dr
P-30-177302	232 College Park Dr
P-30-177303	244 College Park Dr
P-30-177304	256 College Park Dr
P-30-177305	268 College Park Dr
P-30-177306	276 College Park Dr
P-30-177307	296 College Park Dr
P-30-177308	300 College Park Dr
P-30-177309	108 Dartmouth Circle
P-30-177310	321 Harvard Ln
P-30-177311	6922 Anthony Ave
P-30-177312	6852 Anthony Ave
P-30-177313	6612 Anthony Ave
P-30-177314	6602 Anthony Ave
P-30-177315	6552 Anthony Ave
P-30-177316	6412 Anthony Ave
P-30-177317	6392 Anthony Ave
P-30-177318	6382 Anthony Ave
P-30-177319	6362 Anthony Ave
P-30-177320	6342 Anthony Ave
P-30-177321	6292 Anthony Ave
P-30-177322	6282 Anthony Ave
P-30-177323	6272 Anthony Ave
P-30-177324	6242 Anthony Ave
P-30-177325	6232 Anthony Ave
P-30-177326	6222 Anthony Ave
P-30-177327	6192 Anthony Ave
P-30-177328	6132 Anthony Ave
P-30-177329	6102 Anthony Ave
P-30-177330	6072 Anthony Ave
P-30-177331	5952 Anthony Ave
P-30-177332	5842 Anthony Ave
P-30-177333	5832 Anthony Ave
P-30-177334	5792 Anthony Ave
P-30-177335	3052 Yellowtail Dr
P-30-177336	3042 Yellowtail Dr
P-30-177337	3032 Yellowtail Dr
P-30-177338	2972 Yellowtail Dr
P-30-177339	2942 Yellowtail Dr
P-30-177340	2922 Druid Ln
P-30-177341	12901 Martha Ann Dr
P-30-177342	12895 Martha Ann Dr
P-30-177343	12865 Martha Ann Dr
P-30-177344	12861 Martha Ann Dr
P-30-177345	12855 Martha Ann Dr
P-30-177346	12841 Martha Ann Dr
P-30-177347	12831 Martha Ann Dr
P-30-177348	12821 Martha Ann Dr
P-30-177349	12791 Martha Ann Dr
P-30-177350	12781 Martha Ann Dr
P-30-177351	12771 Martha Ann Dr
P-30-177352	12745 Martha Ann Dr
P-30-177353	12741 Martha Ann Dr

## Report Detail: OR-04172

Costa Mesa Hive Jive

---

P-30-177354	12735 Martha Ann Dr
P-30-177355	12725 Martha Ann Dr
P-30-177356	12721 Martha Ann Dr
P-30-177357	12711 Martha Ann Dr
P-30-177358	12705 Martha Ann Dr
P-30-177359	12661 Martha Ann Dr
P-30-177360	12641 Martha Ann Dr
P-30-177361	12591 Martha Ann Dr
P-30-177362	12571 Martha Ann Dr
P-30-177363	12541 Martha Ann Dr
P-30-177364	12481 Martha Ann Dr
P-30-177365	12461 Martha Ann Dr
P-30-177366	12411 Martha Ann Dr
P-30-177367	12361 Martha Ann Dr
P-30-177368	12291 Martha Ann Dr
P-30-177369	12271 Martha Ann Dr
P-30-177370	12241 Martha Ann Dr
P-30-177371	12201 Martha Ann Dr
P-30-177372	12131 Martha Ann Dr
P-30-177373	12081 Martha Ann Dr
P-30-177374	12071 Martha Ann Dr
P-30-177375	11971 Martha Ann Dr
P-30-177376	11901 Martha Ann Dr
P-30-177377	11871 Martha Ann Dr
P-30-177378	11831 Martha Ann Dr
P-30-177379	11801 Martha Ann Dr
P-30-177380	11771 Martha Ann Dr
P-30-177381	11761 Martha Ann Dr
P-30-177382	11741 Martha Ann Dr
P-30-177383	11701 Martha Ann Dr
P-30-177384	11671 Martha Ann Dr
P-30-177385	11641 Martha Ann Dr
P-30-177386	11621 Martha Ann Dr
P-30-177387	11611 Martha Ann Dr
P-30-177388	11591 Martha Ann Dr
P-30-177389	11541 Martha Ann Dr
P-30-177390	11531 Martha Ann Dr
P-30-177391	11525 Martha Ann Dr
P-30-177392	11501 Martha Ann Dr
P-30-177393	11491 Martha Ann Dr
P-30-177394	11471 Martha Ann Dr
P-30-177395	11431 Martha Ann Dr
P-30-177396	11381 Martha Ann Dr
P-30-177397	11351 Martha Ann Dr
P-30-177398	11331 Martha Ann Dr
P-30-177399	11291 Martha Ann Dr
P-30-177400	11271 Martha Ann Dr
P-30-177401	11251 Martha Ann Dr
P-30-177402	11211 Martha Ann Dr
P-30-177403	11207 Martha Ann Dr
P-30-177404	11181 Martha Ann Dr
P-30-177405	11171 Martha Ann Dr
P-30-177406	11161 Martha Ann Dr
P-30-177407	11151 Martha Ann Dr
P-30-177408	11111 Martha Ann Dr
P-30-177409	3041 Ruth Elaine Dr
P-30-177410	3091 Ruth Elaine Dr
P-30-177411	Seegerstrom Ranch Complex
P-30-177412	Oak Middle School

## Report Detail: OR-04172

Costa Mesa Hive Jive

---

P-30-177413	3195 Harbor Blvd
P-30-177414	Wells Fargo
P-30-177415	8052 Larson Ave
P-30-177416	15557 Beach Blvd
P-30-177417	The Atkinson
P-30-177418	6342 Rochelle Ave
P-30-177419	6201 Mahogany Ave
P-30-177420	8032 Larson Ave
P-30-177421	Driftwood Mobile Home Park; Hy
P-30-177422	7041 Sowell Ave
P-30-177423	6531 Homer St
P-30-177424	International Billiards; Family Billi
P-30-177425	Westminster Lanes

No. resources: 343

Has informals:

### Location information

County(ies): Orange

USGS quad(s): ANAHEIM, LOS ALAMITOS, NEWPORT BEACH, SEAL BEACH, TUSTIN

Address:

PLSS:

### Database record metadata

Date	User	
Entered: 6/8/2012	Inoyes	
Last modified: 2/25/2015	agarcia	
IC actions: Date	User	Action taken
2/25/2015	agarcia	GIS QC

Record status:

## Report Detail: OR-04223

Costa Mesa Hive Jive

---

### Identifiers

*Report No.:* OR-04223

*Other IDs:*

*Cross-refs:*

### Citation information

*Author(s):* Flynn, Chris

*Year:* 2011

*Title:* Notification of Finding of No Adverse Effect with Standard Conditions for the Bridge Deck Maintenance and Sealing at 30 Locations Throughout Orange County, California

*Affiliation:* Department of Transportation

*No. pages:* 59

*No. maps:*

*Attributes:* Architectural/Historical, Field study, Management/planning

*Inventory size:* QC

*Disclosure:* Not for publication

*Collections:* No

### General notes

### Associated resources

*No. resources:* 0

*Has informals:* No

### Location information

*County(ies):* Orange

*USGS quad(s):* CANADA GOVERNADORA, DANA POINT, EL TORO, LOS ALAMITOS, NEWPORT BEACH, SAN JUAN CAPISTRANO, SEAL BEACH, TUSTIN, YORBA LINDA

*Address:*

*PLSS:*

### Database record metadata

	<i>Date</i>	<i>User</i>	
<i>Entered:</i>	10/3/2012	Inoyes	
<i>Last modified:</i>	10/10/2023	aswitals	
<i>IC actions:</i>	<i>Date</i>	<i>User</i>	<i>Action taken</i>
	1/5/2015	agarcia	GIS QC
	10/10/2023	aswitals	A.S.
<i>Record status:</i>	Database Complete		

## Resource Detail: P-30-100337

Costa Mesa Hive Jive

---

### Identifying information

Primary No.: P-30-100337

Trinomial:

Name: Ikea Isolate

Other IDs: Type

Name

Resource Name

Ikea Isolate

Cross-refs:

### Attributes

Resource type: Other

Age: Prehistoric

Information base: Other

Attribute codes: AP02 (Lithic scatter)

Disclosure: Not for publication

Collections: Yes

Accession no(s):

Facility:

### General notes

### Recording events

Date	Recorder(s)	Affiliation	Notes
2/6/2003	N.E. Sikes	SWCA	

### Associated reports

Report No.	Year	Title	Affiliation
OR-02623	2003	Cultural Resources Monitoring for the Ikea Costa Mesa Project, Orange County, California -Revised	SWCA Environmental Consultants, Inc.

### Location information

County: Orange

USGS quad(s): NEWPORT BEACH

Address: Address

City

Assessor's parcel no.

Zip code

Costa Mesa

PLSS:

UTMs:

### Management status

### Database record metadata

Date	User
Entered: 5/1/2008	jay
Last modified: 9/4/2019	sstjames
IC actions: Date	User
5/1/2008	jay
Action taken	Appended records from Encodent database.

Record status: Verified



## Resource Detail: P-30-176764

Costa Mesa Hive Jive

---

### Identifying information

Primary No.: P-30-176764

Trinomial:

Name: Segerstrom Farm Complex

Other IDs:	Type	Name
	Resource Name	Segerstrom Farm Complex
	Other	Segerstrom House, Garage & Cottage
	Other	zip 92627

Cross-refs: Is an element of district 30-177411

### Attributes

Resource type: Building, Structure

Age: Historic

Information base: Survey

Attribute codes: HP02 (Single family property)

Disclosure: Unrestricted

Collections: No

Accession no(s):

Facility:

### General notes

### Recording events

Date	Recorder(s)	Affiliation	Notes
7/6/1999	Jan Ostashay	PCR	

### Associated reports

Report No.	Year	Title	Affiliation
OR-03536	2008	Cultural Resources Records Search and Site Visit Results for Royal Street Communications, LLC Candidate LA2748A (Wimbledon), 1142 Buckingham Drive, Costa Mesa, Orange County, California	Michael Brandman Associates
OR-03716	2008	Cultural Resources Records Search and Site Visit Results for T-Mobile Candidate LA23637A (Wimbledon Glen), 1142 Buckingham Drive, Costa Mesa, Orange County, California	Michael Brandman Associates

### Location information

County: Orange

USGS quad(s): NEWPORT BEACH

Address:	Address	City	Assessor's parcel no.	Zip code
	3315 Fairview Rd	Costa Mesa	140-041-55	92627

PLSS:

UTMs:

### Management status

### Database record metadata

Date	User	Action taken
Entered: 5/1/2008	jay	
Last modified: 9/4/2019	sstjames	
IC actions: Date	User	Action taken
5/1/2008	jay	Appended records from Encodent database.
4/26/2011	sstjames	added other identifier
Record status: Verified		

## Resource Detail: P-30-176765

Costa Mesa Hive Jive

---

### Identifying information

Primary No.: P-30-176765

Trinomial:

Name: Segerstrom Barn

Other IDs: Type

Name

Resource Name

Segerstrom Barn

Other

zip 92627

Cross-refs: Is an element of district 30-177411

### Attributes

Resource type: Building

Age: Historic

Information base: Survey

Attribute codes: HP04 (Ancillary building); HP33 (Farm/ranch)

Disclosure: Unrestricted

Collections: No

Accession no(s):

Facility:

### General notes

### Recording events

Date	Recorder(s)	Affiliation	Notes
7/6/1999	Jan Ostashay	PCR	
1/20/2006	Janet Hansen	LSA	Update

### Associated reports

Report No.	Year	Title	Affiliation
OR-03536	2008	Cultural Resources Records Search and Site Visit Results for Royal Street Communications, LLC Candidate LA2748A (Wimbledon), 1142 Buckingham Drive, Costa Mesa, Orange County, California	Michael Brandman Associates
OR-03716	2008	Cultural Resources Records Search and Site Visit Results for T-Mobile Candidate LA23637A (Wimbledon Glen), 1142 Buckingham Drive, Costa Mesa, Orange County, California	Michael Brandman Associates

### Location information

County: Orange

USGS quad(s): NEWPORT BEACH

Address: Address

City

Assessor's parcel no.

Zip code

3315 Fairview Rd

Costa Mesa

140-041-55

92627

PLSS:

UTMs:

### Management status

### Database record metadata

Date User

Entered: 5/1/2008

jay

Last modified: 9/4/2019

sstjames

IC actions: Date

User

Action taken

5/1/2008

jay

Appended records from Encodent database.

4/26/2011

sstjames

added other identifier

Record status: Verified

## Resource Detail: P-30-176945

Costa Mesa Hive Jive

---

### Identifying information

Primary No.: P-30-176945

Trinomial:

Name: Irvine General Store

Other IDs: Type

Name

Resource Name

Irvine General Store

Other

Wee House Gifts

Other

zip 92650

Cross-refs:

### Attributes

Resource type: Building

Age: Historic

Information base: Other

Attribute codes: HP06 (1-3 story commercial building)

Disclosure: Not for publication

Collections: No

Accession no(s):

Facility:

### General notes

### Recording events

Date	Recorder(s)	Affiliation	Notes
12/27/1990	Casen, George	PBQ&D	

### Associated reports

Report No.	Year	Title	Affiliation
OR-01944	1984	Draft Environmental Impact Report East Irvine Historical Site, Irvine, California	Sanchez Talarico Associates

### Location information

County: Orange

USGS quad(s): TUSTIN

Address: Address

City

Assessor's parcel no.

Zip code

14980 Sand Canyon Ave

Irvine 92650

104-583-09

14951 Sand Canyon Ave

Irvine 92650

PLSS:

UTMs:

### Management status

### Database record metadata

Date

User

Entered: 2/9/2010

mgalaz

Last modified: 9/4/2019

sstjames

IC actions:

Record status: Verified

## Resource Detail: P-30-177411

Costa Mesa Hive Jive

---

### Identifying information

Primary No.: P-30-177411

Trinomial:

Name: Segerstrom Ranch Complex

Other IDs: Type Name

OHP Property Numb 186251

Resource Name Segerstrom Ranch Complex

Other Segerstrom Farm Complex

Cross-refs: Is a district with element 30-176764

Is a district with element 30-176765

### Attributes

Resource type: Building, District

Age: Historic

Information base: Survey

Attribute codes: HP02 (Single family property); HP04 (Ancillary building); HP33 (Farm/ranch)

Disclosure: Unrestricted

Collections: No

Accession no(s):

Facility:

### General notes

### Recording events

Date	Recorder(s)	Affiliation	Notes
1/20/2006	Janet Hansen	LSA Associates	
6/25/2010	Carrie Chasteen	Parsons	Update.

### Associated reports

Report No.	Year	Title	Affiliation
OR-04172	2011	Historic Property Survey Report San Diego Freeway (I-405) Improvement Project SR-73 to I-605, Orange and Los Angeles Counties	Parsons

### Location information

County: Orange

USGS quad(s): NEWPORT BEACH

Address: Address	City	Assessor's parcel no.	Zip code
3315 Fairview Rd	Costa Mesa	140-041-55	92627
		140-041-82	

PLSS: T5S R10W Sec. SBBM

UTMs: Zone 11 415818mE 3728209mN NAD83

### Management status

### Database record metadata

Date	User
Entered: 4/12/2012	mgalaz
Last modified: 9/4/2019	sstjames
IC actions:	
Record status: Verified	

## Resource Detail: P-30-177413

Costa Mesa Hive Jive

---

### Identifying information

Primary No.: P-30-177413

Trinomial:

Name: 3195 Harbor Blvd

Other IDs: Type

Name

Resource Name

3195 Harbor Blvd

Cross-refs:

### Attributes

Resource type: Building

Age: Historic

Information base: Survey

Attribute codes: HP06 (1-3 story commercial building)

Disclosure: Unrestricted

Collections: No

Accession no(s):

Facility:

### General notes

### Recording events

Date	Recorder(s)	Affiliation	Notes
9/30/2010	Carrie Chasteen	Parsons	

### Associated reports

Report No.	Year	Title	Affiliation
OR-04172	2011	Historic Property Survey Report San Diego Freeway (I-405) Improvement Project SR-73 to I-605, Orange and Los Angeles Counties	Parsons

### Location information

County: Orange

USGS quad(s): NEWPORT BEACH

Address: Address

City

Assessor's parcel no.

Zip code

3195 Harbor Blvd

Costa Mesa

139-501-01

90277

PLSS:

UTMs:

### Management status

### Database record metadata

Date

User

Entered: 4/17/2012

mgalaz

Last modified: 9/4/2019

sstjames

IC actions:

Record status: Verified

**Attachment 3**  
**NAHC Sacred Lands File**  
**Search Results**

April 11, 2024

Laura Miranda  
California Native American Heritage Commission  
1550 Harbor Blvd., Suite 100  
West Sacramento, CA 95691  
nahc@nahc.ca.gov

Re: Cultural Resources Inventory for the Costa Mesa Live Hive Project, Costa Mesa, California

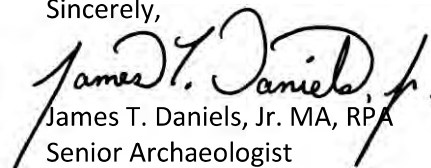
Dear Chairperson Miranda,

Michael Baker International is conducting a cultural resources inventory for the proposed Costa Mesa Live Hive Project in Costa Mesa, CA. The cultural resources inventory will be conducted in compliance with the California Environmental Quality Act. The proposed project includes redeveloping the existing Hive Costa Mesa Business Park and Los Angeles Chargers Hoag Performance Center into a residential development with a small resident-serving commercial component. The residential components consist of three, five-story, multi-family residential buildings with a total of 1,050 rental units with an affordable housing component. Each “wrap” style building would wrap around a parking structure in a manner that screens the parking structure from public view and provides residents with direct access to the parking structure from their resident floor level. Open space and recreational areas consisting of courtyards, plazas, landscaped paseos, pools, pedestrian connections, and other recreational amenities are also proposed. The project’s open space areas would connect to the adjacent “Rail Trail” open space area to the west.

Michael Baker International will complete a cultural resources records search of the project site with a ½ mile search radius at the South Central Coastal Information Center (SCCIC), Native American Heritage Commission Sacred Lands File search; literature, historic map and aerial photo review, outreach to one local historical society or preservation organization, an archaeological pedestrian survey of approximately 14 acres, and an archaeological sensitivity analysis of the project site. The intent of the above-mentioned cultural resources identification efforts is to determine if there are historical resources, as defined in Section 15064.5(a) of the California Environmental Quality Act, within the project site.

We would also like to request a list of Native American tribes that may have knowledge of cultural resources in the project area or who may wish to be notified of the investigation. Please submit your response to me via e-mail at james.daniels@mbakerintl.com.

Sincerely,

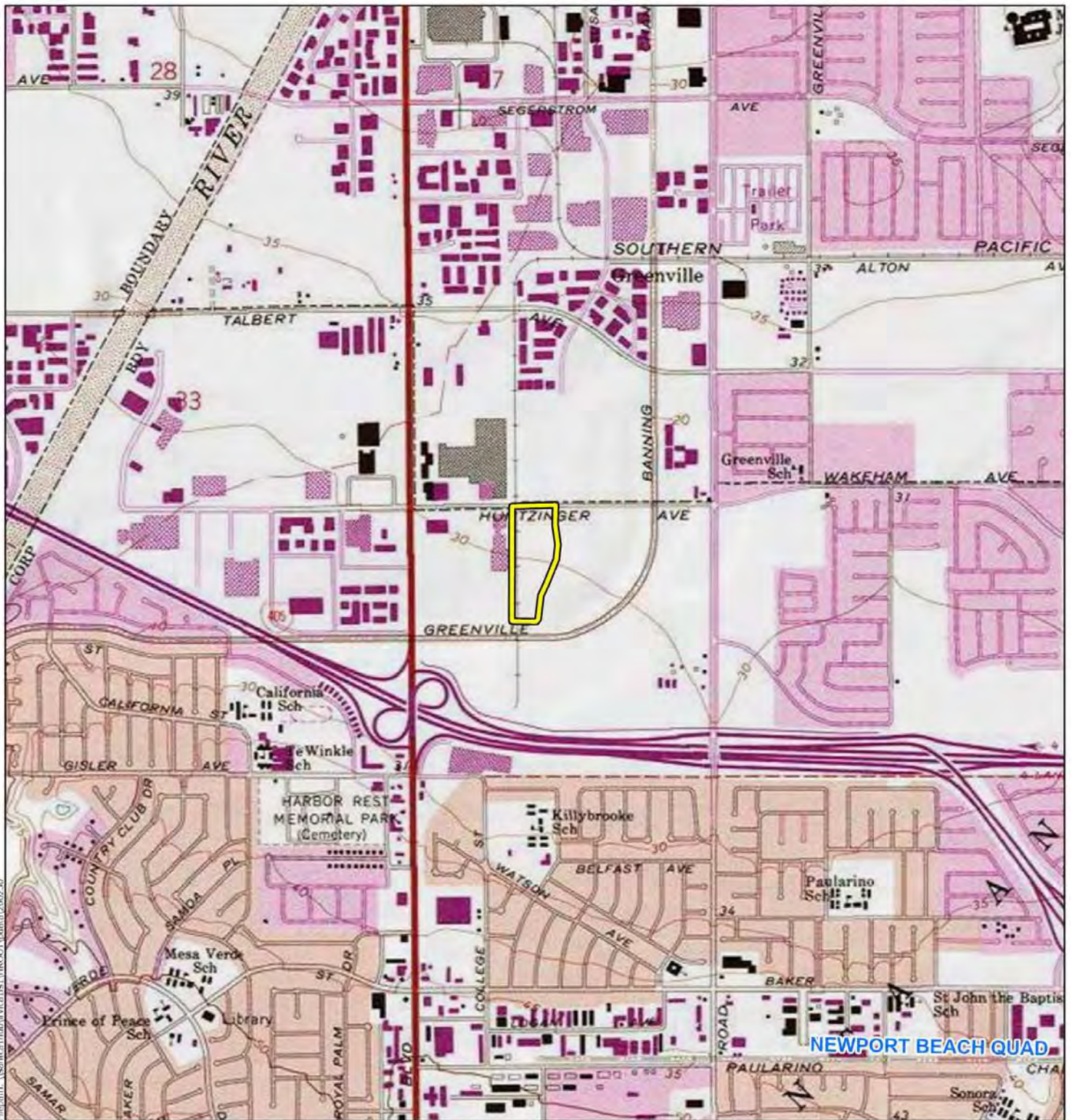
  
James T. Daniels, Jr. MA, RPA  
Senior Archaeologist  
james.daniels@mbakerintl.com

**Your Requested Information:**

County – Orange County  
USGS Quad – Newport Beach  
Township and Range – T05S R10W Sec. 34

Attachments: 1. 1:24,000 Scale Location Map of Project Area  
2. Sacred Lands File & Native American Contacts List Request





### Legend

- Project Area
- 7.5' USGS Topo

NEWPORT BEACH USGS 7.5-MINUTE TOPO QUAD  
T 05 S R 10 W, SECTION 34  
PART OF THE SANTIAGO DE SANTA ANA LANDGRANT





# Sacred Lands File & Native American Contacts List Request

## Native American Heritage Commission

1550 Harbor Blvd, Suite 100

West Sacramento, CA 95691

916-373-3710

916-373-5471 – Fax

[nahc@nahc.ca.gov](mailto:nahc@nahc.ca.gov)

*Information Below is Required for a Sacred Lands File Search*

**Project:** Costa Mesa Live Hive Project

**County:** Orange County

**USGS Quadrangle Name:** Newport Beach

**Township:** 05 S **Range:** 10 W **Section(s):** 34

**Company/Firm/Agency:** Michael Baker International

**Street Address:** 5050 Avenida Encinas Suite 260

**City:** Carlsbad, CA **Zip:** 92008

**Phone:** (760) 603-6251

**Fax:** \_\_\_\_\_

**Email:** james.daniels@mbakerintl.com

### Project Description:

The Hive Live Project involves redeveloping the existing Hive Costa Mesa Business Park and Los Angeles Chargers Hoag Performance Center into a residential development with a small resident-serving commercial component. Residential components consist of three, five-story, multi-family residential buildings with a total of 1,050 rental units with an affordable housing component. Each wrap style building would wrap around a parking structure in a manner that screens the parking structure from public view and provides residents with direct access to the parking structure from their resident floor level. Open space and recreational areas consisting of courtyards, plazas, landscaped paseos, pools, pedestrian connections, and other recreational amenities are also proposed. The project's open space areas would connect to the adjacent Rail Trail open space area to the west.

# NATIVE AMERICAN HERITAGE COMMISSION

April 24, 2024

James T. Daniels  
Michael Baker International

Via Email to: [James.Daniels@mbakerintl.com](mailto:James.Daniels@mbakerintl.com)

**Re: Native American Tribal Consultation, Pursuant to the Assembly Bill 52 (AB 52), Amendments to the California Environmental Quality Act (CEQA) (Chapter 532, Statutes of 2014), Public Resources Code Sections 5097.94 (m), 21073, 21074, 21080.3.1, 21080.3.2, 21082.3, 21083.09, 21084.2 and 21084.3, Costa Mesa Live Hive Project, Orange County**

To Whom It May Concern:

Pursuant to Public Resources Code section 21080.3.1 (c), attached is a consultation list of tribes that are traditionally and culturally affiliated with the geographic area of the above-listed project. Please note that the intent of the AB 52 amendments to CEQA is to avoid and/or mitigate impacts to tribal cultural resources, (Pub. Resources Code §21084.3 (a)) ("Public agencies shall, when feasible, avoid damaging effects to any tribal cultural resource.")

Public Resources Code sections 21080.3.1 and 21084.3(c) require CEQA lead agencies to consult with California Native American tribes that have requested notice from such agencies of proposed projects in the geographic area that are traditionally and culturally affiliated with the tribes on projects for which a Notice of Preparation or Notice of Negative Declaration or Mitigated Negative Declaration has been filed on or after July 1, 2015. Specifically, Public Resources Code section 21080.3.1 (d) provides:

*Within 14 days of determining that an application for a project is complete or a decision by a public agency to undertake a project, the lead agency shall provide formal notification to the designated contact of, or a tribal representative of, traditionally and culturally affiliated California Native American tribes that have requested notice, which shall be accomplished by means of at least one written notification that includes a brief description of the proposed project and its location, the lead agency contact information, and a notification that the California Native American tribe has 30 days to request consultation pursuant to this section.*

The AB 52 amendments to CEQA law does not preclude initiating consultation with the tribes that are culturally and traditionally affiliated within your jurisdiction prior to receiving requests for notification of projects in the tribe's areas of traditional and cultural affiliation. The Native American Heritage Commission (NAHC) recommends, but does not require, early consultation as a best practice to ensure that lead agencies receive sufficient information about cultural resources in a project area to avoid damaging effects to tribal cultural resources.

The NAHC also recommends, but does not require that agencies should also include with their notification letters, information regarding any cultural resources assessment that has been completed on the area of potential effect (APE), such as:

1. The results of any record search that may have been conducted at an Information Center of the California Historical Resources Information System (CHRIS), including, but not limited to:



CHAIRPERSON  
**Reginald Pagaling**  
Chumash

VICE-CHAIRPERSON  
**Buffy McQuillen**  
Yokayo Pomo, Yuki,  
Nomlaki

SECRETARY  
**Sara Dutschke**  
Miwok

PARLIAMENTARIAN  
**Wayne Nelson**  
Luiseño

COMMISSIONER  
**Isaac Bojorquez**  
Ohlone-Costanoan

COMMISSIONER  
**Stanley Rodriguez**  
Kumeyaay

COMMISSIONER  
**Laurena Bolden**  
Serrano

COMMISSIONER  
**Reid Milanovich**  
Cahuilla

COMMISSIONER  
**Bennae Calac**  
Pauma-Yuima Band of  
Luiseño Indians

EXECUTIVE SECRETARY  
**Raymond C. Hitchcock**  
Miwok, Nisenan

**NAHC HEADQUARTERS**  
1550 Harbor Boulevard  
Suite 100  
West Sacramento,  
California 95691  
(916) 373-3710  
[nahc@nahc.ca.gov](mailto:nahc@nahc.ca.gov)

- A listing of any and all known cultural resources that have already been recorded on or adjacent to the APE, such as known archaeological sites;
- Copies of any and all cultural resource records and study reports that may have been provided by the Information Center as part of the records search response;
- Whether the records search indicates a low, moderate, or high probability that unrecorded cultural resources are located in the APE; and
- If a survey is recommended by the Information Center to determine whether previously unrecorded cultural resources are present.

2. The results of any archaeological inventory survey that was conducted, including:

- Any report that may contain site forms, site significance, and suggested mitigation measures.

All information regarding site locations, Native American human remains, and associated funerary objects should be in a separate confidential addendum, and not be made available for public disclosure in accordance with Government Code section 6254.10.

3. The result of any Sacred Lands File (SLF) check conducted through the Native American Heritage Commission was negative.

4. Any ethnographic studies conducted for any area including all or part of the APE; and

5. Any geotechnical reports regarding all or part of the APE.

Lead agencies should be aware that records maintained by the NAHC and CHRIS are not exhaustive and a negative response to these searches does not preclude the existence of a tribal cultural resource. A tribe may be the only source of information regarding the existence of a tribal cultural resource.

This information will aid tribes in determining whether to request formal consultation. In the event that they do, having the information beforehand will help to facilitate the consultation process.

If you receive notification of change of addresses and phone numbers from tribes, please notify the NAHC. With your assistance, we can assure that our consultation list remains current.

If you have any questions, please contact me at my email address: [Andrew.Green@nahc.ca.gov](mailto:Andrew.Green@nahc.ca.gov).

Sincerely,



Andrew Green  
Cultural Resources Analyst

Attachment

Native American Heritage Commission  
Native American Contact List  
Orange County  
4/24/2024

Tribe Name	Fed (F) Non-Fed (N)	Contact Person	Contact Address	Phone #	Fax #	Email Address	Cultural Affiliation	Counties	Last Updated
Gabrieleno Band of Mission Indians - Kizh Nation	N	Christina Swindall Martinez, Secretary	P.O. Box 393 Covina, CA, 91723	(844) 390-0787		admin@gabrielenoindians.org	Gabrieleno	Los Angeles, Orange, Riverside, San Bernardino, Santa Barbara, Ventura	8/18/2023
Gabrieleno Band of Mission Indians - Kizh Nation	N	Andrew Salas, Chairperson	P.O. Box 393 Covina, CA, 91723	(844) 390-0787		admin@gabrielenoindians.org	Gabrieleno	Los Angeles, Orange, Riverside, San Bernardino, Santa Barbara, Ventura	8/18/2023
Gabrieleno/Tongva San Gabriel Band of Mission Indians	N	Anthony Morales, Chairperson	P.O. Box 693 San Gabriel, CA, 91778	(626) 483-3564	(626) 286-1262	GTTribalcouncil@aol.com	Gabrieleno	Los Angeles, Orange, Riverside, San Bernardino, Santa Barbara, Ventura	12/4/2023
Gabrielino Tongva Indians of California Tribal Council	N	Robert Dorame, Chairperson	P.O. Box 490 Bellflower, CA, 90707	(562) 761-6417	(562) 761-6417	gtongva@gmail.com	Gabrielino	Los Angeles, Orange, Riverside, San Bernardino, Santa Barbara, Ventura	3/16/2023
Gabrielino Tongva Indians of California Tribal Council	N	Christina Conley, Cultural Resource Administrator	P.O. Box 941078 Simi Valley, CA, 93094	(626) 407-8761		<a href="mailto:christina.marsden@alumni.usc.edu">christina.marsden@alumni.usc.edu</a>	Gabrielino	Los Angeles, Orange, Riverside, San Bernardino, Santa Barbara, Ventura	3/16/2023
Gabrielino/Tongva Nation	N	Sandonne Goad, Chairperson	106 1/2 Judge John Aiso St., #231 Los Angeles, CA, 90012	(951) 807-0479		sgoad@gabrielino-tongva.com	Gabrielino	Los Angeles, Orange, Riverside, San Bernardino, Santa Barbara, Ventura	3/28/2023
Gabrielino-Tongva Tribe	N	Sam Dunlap, Cultural Resource Director	P.O. Box 3919 Seal Beach, CA, 90740	(909) 262-9351		tongvatcr@gmail.com	Gabrielino	Los Angeles, Orange, Riverside, San Bernardino, Santa Barbara, Ventura	5/30/2023
Gabrielino-Tongva Tribe	N	Charles Alvarez, Chairperson	23454 Vanowen Street West Hills, CA, 91307	(310) 403-6048		Chavez1956metro@gmail.com	Gabrielino	Los Angeles, Orange, Riverside, San Bernardino, Santa Barbara, Ventura	5/30/2023
Juaneno Band of Mission Indians Acjachemen Nation - Belardes	N	Joyce Perry, Cultural Resource Director	4955 Paseo Segovia Irvine, CA, 92603	(949) 293-8522		kaamalam@gmail.com	Juaneno	Los Angeles, Orange, Riverside, San Bernardino, San Diego	3/17/2023
Juaneno Band of Mission Indians Acjachemen Nation 84A	N	Heidi Lucero, Chairperson, THPO	31411-A La Matanza Street San Juan Capistrano, CA, 92675	(562) 879-2884		jbmian.chairwoman@gmail.com	Juaneno	Los Angeles, Orange, Riverside, San Bernardino, San Diego	3/28/2023
Pala Band of Mission Indians	F	Shasta Gaughen, Tribal Historic Preservation Officer	PMB 50, 35008 Pala Temecula Road Pala, CA, 92059	(760) 891-3515		sgaughen@palatribe.com	Cupeno Luiseno	Orange, Riverside, San Bernardino, San Diego	11/27/2023
Pala Band of Mission Indians	F	Christopher Nejo, Legal Analyst/Researcher	PMB 50, 35008 Pala Temecula Road Pala, CA, 92059	(760) 891-3564		cnejo@palatribe.com	Cupeno Luiseno	Orange, Riverside, San Bernardino, San Diego	11/27/2023

**Native American Heritage Commission  
Native American Contact List  
Orange County  
4/24/2024**

Pala Band of Mission Indians	F	Alexis Wallick, Assistant THPO	PMB 50, 35008 Pala Temecula Road Pala, CA, 92059	(760) 891-3537		awallick@palatribe.com	Cupeno Luiseno	Orange,Riverside,San Bernardino,San Diego	11/27/2023
Santa Rosa Band of Cahuilla Indians	F	Steven Estrada, Tribal Chairman	P.O. Box 391820 Anza, CA, 92539	(951) 659-2700	(951) 659-2228	sestrada@santarosa-nsn.gov	Cahuilla	Imperial,Los Angeles,Orange,Riverside,San Bernardino,San Diego	4/8/2024
Santa Rosa Band of Cahuilla Indians	F	Vanessa Minott, Tribal Administrator	P.O. Box 391820 Anza, CA, 92539	(951) 659-2700	(951) 659-2228	vminott@santarosa-nsn.gov	Cahuilla	Imperial,Los Angeles,Orange,Riverside,San Bernardino,San Diego	4/8/2024
Soboba Band of Luiseno Indians	F	Jessica Valdez, Cultural Resource Specialist	P.O. Box 487 San Jacinto, CA, 92581	(951) 663-6261	(951) 654-4198	jvaldez@soboba-nsn.gov	Cahuilla Luiseno	Imperial,Los Angeles,Orange,Riverside,San Bernardino,San Diego	7/14/2023
Soboba Band of Luiseno Indians	F	Joseph Ontiveros, Tribal Historic Preservation Officer	P.O. Box 487 San Jacinto, CA, 92581	(951) 663-5279	(951) 654-4198	jontiveros@soboba-nsn.gov	Cahuilla Luiseno	Imperial,Los Angeles,Orange,Riverside,San Bernardino,San Diego	7/14/2023

This list is current only as of the date of this document. Distribution of this list does not relieve any person of statutory responsibility as defined in Section 7050.5 of the Health and Safety Code, Section 5097.94 of the Public Resources Code and section 5097.98 of the Public Resources Code.

Record: PROJ-2024-002210  
Report Type: AB52 GIS  
Counties: Orange  
NAHC Group: All

This list is only applicable for consultation with Native American tribes under Public Resources Code Sections 21080.3.1 for the proposed Costa Mesa Live Hive Project, Orange County

**Attachment 4**

**Paleontological Record**

**Search Results**



Natural History Museum  
of Los Angeles County  
900 Exposition Boulevard  
Los Angeles, CA 90007  
tel 213.763.DINO  
www.nhm.org

Research & Collections

e-mail: [paleorecords@nhm.org](mailto:paleorecords@nhm.org)

June 23, 2024

Michael Baker International  
Attn: James T. Daniels

re: Paleontological resources for the Costa Mesa Hive Live Project

Dear James:

I have conducted a thorough search of our paleontology collection records for the locality and specimen data for proposed development at the Costa Mesa Hive Live project area as outlined on the portion of the Newport Beach USGS topographic quadrangle map that you requested via e-mail on June 10, 2024. We do not have any fossil localities that lie directly within the proposed project area, but we do have fossil localities nearby from the same sedimentary deposits that may occur in the proposed project area, either at the surface or at depth.

The following table shows the closest known localities in the collection of the Natural History Museum of Los Angeles County (NHMLA).

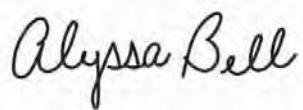
Locality Number	Location	Formation	Taxa	Depth
LACM IP 4695	Bristol St. and Paularino Ave.	Palos Verdes Sand	Invertebrates - clam ( <i>Saxidomus</i> ), bryozoan (Bryozoa indet., <i>Conopeum</i> )	Unknown
LACM VP 4219; LACM IP 31322	SW end of the Newport Fwy between Santa Isabel Ave & 23rd St	Palos Verdes Sand (coarse poorly sorted friable sand)	Camel family (Camelidae), sea turtle (Cheloniidae); uncatalogued fish and birds; invertebrates ( <i>Entobia</i> , <i>Lottia</i> , <i>Caesia</i> , <i>Volvania</i> , <i>Ala</i> , <i>Eulithidium</i> , <i>Chama</i> , <i>Glossaulax</i> , <i>Agathistoma</i> , <i>Sinum</i> , <i>Chlorostoma</i> , <i>Calianax</i> , <i>Ophiodermella</i> , <i>Serpulorbis</i> , <i>Argopecten</i> , and others)	30 ft bgs
LACM IP 21488	S of the Santa Ana River near Adams Ave	Unknown Formation (Pleistocene; med to coarse limonitic stained sand)	Invertebrates (unspecified)	Unknown
LACM VP 7657 - 7659	Ellis Avenue & Patterson Lane, Huntington Beach	Unknown Formation (Pleistocene; gray	School shark ( <i>Galeorhinus</i> ), eagle ray ( <i>Myliobatus</i> ), goby ( <i>Lepidogobius</i> , <i>Leptocottus</i> ),	150 - 350 ft bgs

Locality Number	Location	Formation	Taxa	Depth
		siltstone)	midshipmen ( <i>Porichthys</i> ), croaker ( <i>Seriphus</i> ), flatfish ( <i>Citharichthys</i> ), cusk-eel ( <i>Otophidium</i> ), skate ( <i>Raja</i> ), angelshark ( <i>Squatina</i> ), sculpin ( <i>Cottidae</i> )	
LACM VP 3267	Near intersection of 19th & Anaheim in Costa Mesa	Unknown Formation (Pleistocene)	Elephant clade (Proboscidea)	Unknown

*VP, Vertebrate Paleontology; IP, Invertebrate Paleontology; bgs, below ground surface*

This records search covers only the records of the NHMLA. It is not intended as a paleontological assessment of the project area for the purposes of CEQA or NEPA. Potentially fossil-bearing units are present in the project area, either at the surface or in the subsurface. As such, NHMLA recommends that a full paleontological assessment of the project area be conducted by a paleontologist meeting Federal (43 Code of Federal Regulations Part 49.110) or Society of Vertebrate Paleontology standards.

Sincerely,



Alyssa Bell, Ph.D.  
Natural History Museum of Los Angeles County

enclosure: invoice