

October 27, 2023

Jennifer Wu
Senior Environmental Planner
3760 Kilroy Airport Way, Suite 270
Long Beach, CA 90806

RE: Roosevelt Elementary School Campus Plan Project California Historical Resources Information System Records Search, City of Santa Monica, Los Angeles County, California

Dear Ms. Wu:

In support of the Roosevelt Elementary School Campus Plan Project (project), Michael Baker International has conducted a California Historical Resources Information System records search at the South Central Coastal Information Center (SCCIC). The project area consists of the campus of Roosevelt Elementary School, located at 801 Montana Avenue, in the City of Santa Monica. Michael Baker International archaeologist Marc A. Beherec, Ph.D., RPA, conducted a cultural resources records search of the project area and a quarter-mile search radius at the SCCIC on October 25, 2023 (see **Attachment 1**). The SCCIC at California State University, Fullerton, is part of the California Historical Resources Information System, an affiliate of the California Office of Historic Preservation (OHP). The SCCIC is the official state repository of cultural resources records and reports for Los Angeles County.

Results

Previous Studies

No previous studies are mapped within the project site itself. One previous cultural resources study has been completed within the quarter-mile search radius, as summarized below (**Table 1**). Less than one percent of the study area has been subjected to study as a result of this study.

Table 1: Previous Cultural Resource Studies Within 0.25 Mile of the Project Area

Report No.	Author(s)	Date	Report Title
LA-11633	Bonner, Wayne H. and Kathleen A. Crawford	2011	Cultural Recourse Records Search and Site Visit Results for AT&T Mobility, LLC Candidate LAC319-01, USID 11915 (7th & Montana), 703 Montana Avenue, Santa Monica, Los Angeles County, California

Previously Documented Cultural Resources

Two previously recorded resources were identified within the project site, as summarized below (**Table 2**). No additional resources were identified within one-quarter mile of the project site. The SCCIC documentation for these resources is included in **Attachment 2**.

California Historical Resources Information System Records Search Results

Roosevelt Elementary School Campus Plan Project

Page 2

No archaeological sites are documented within the project site or within one-quarter mile of the project site. The closest archaeological sites are a cemetery and refuse scatter associated with the Marquez Adobe and located approximately 0.58-mile northwest of the project site.

Table 2: Previously Documented Cultural Resources Within 0.25 Mile of the Project Site

Primary/ Trinomial No.	Resource Name/ Description	OHP Status Code/ Eligibility Status	Location Relative to Project Site
P-19-188708	Santa Monica Public Schools Thematic District	5D1, Contributor to a district that is listed or designated locally	Overlaps
P-19-188712	Roosevelt School	5D1, Contributor to a district that is listed or designated locally	Within

Sincerely,



Marc A. Beherec, PhD, RPA
Senior Archaeologist

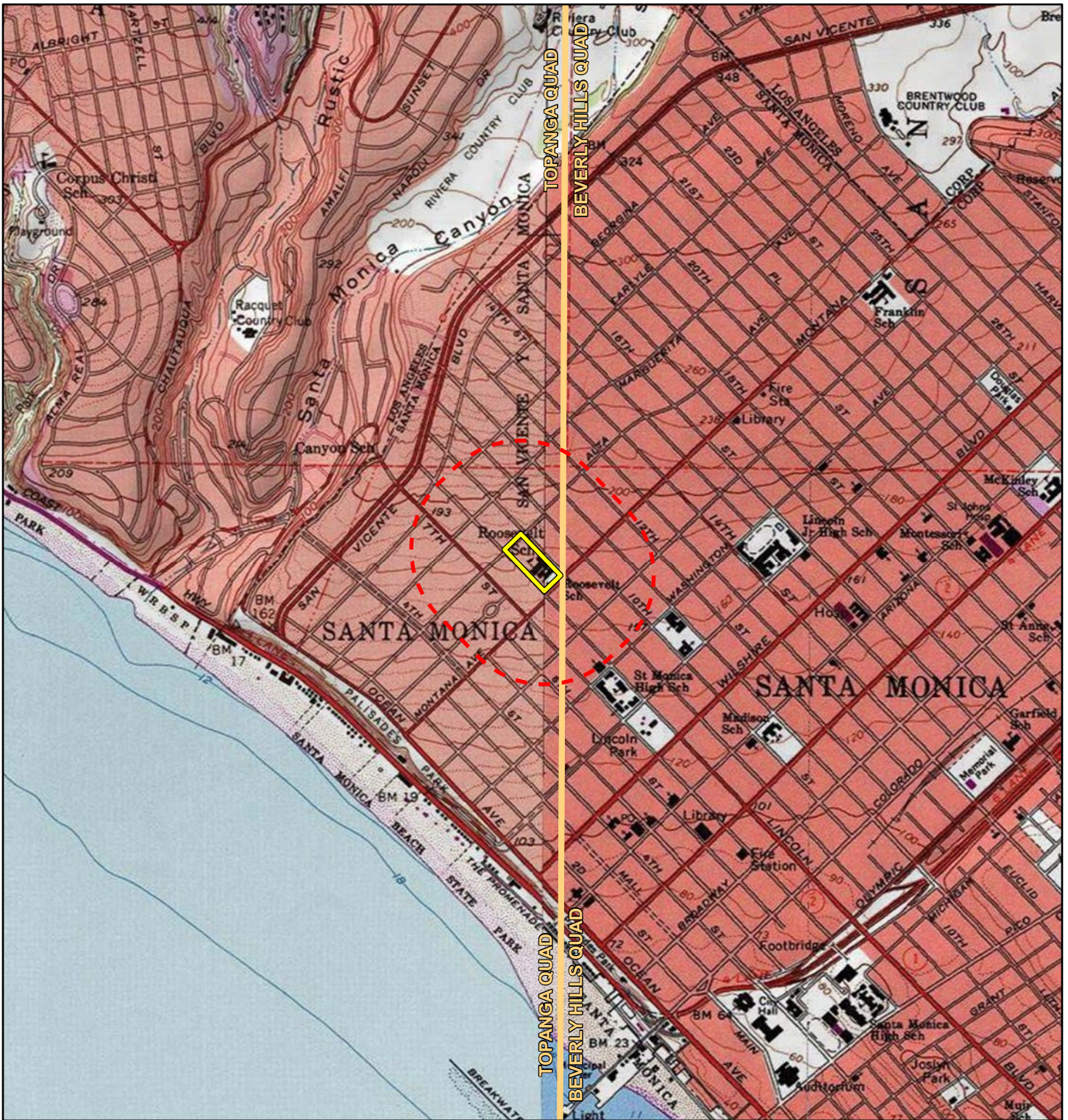
Attachments:

Attachment 1 – Figures

Attachment 2 – South Central Coastal Information Center Records Search Results

Attachment 1

Figures



Legend

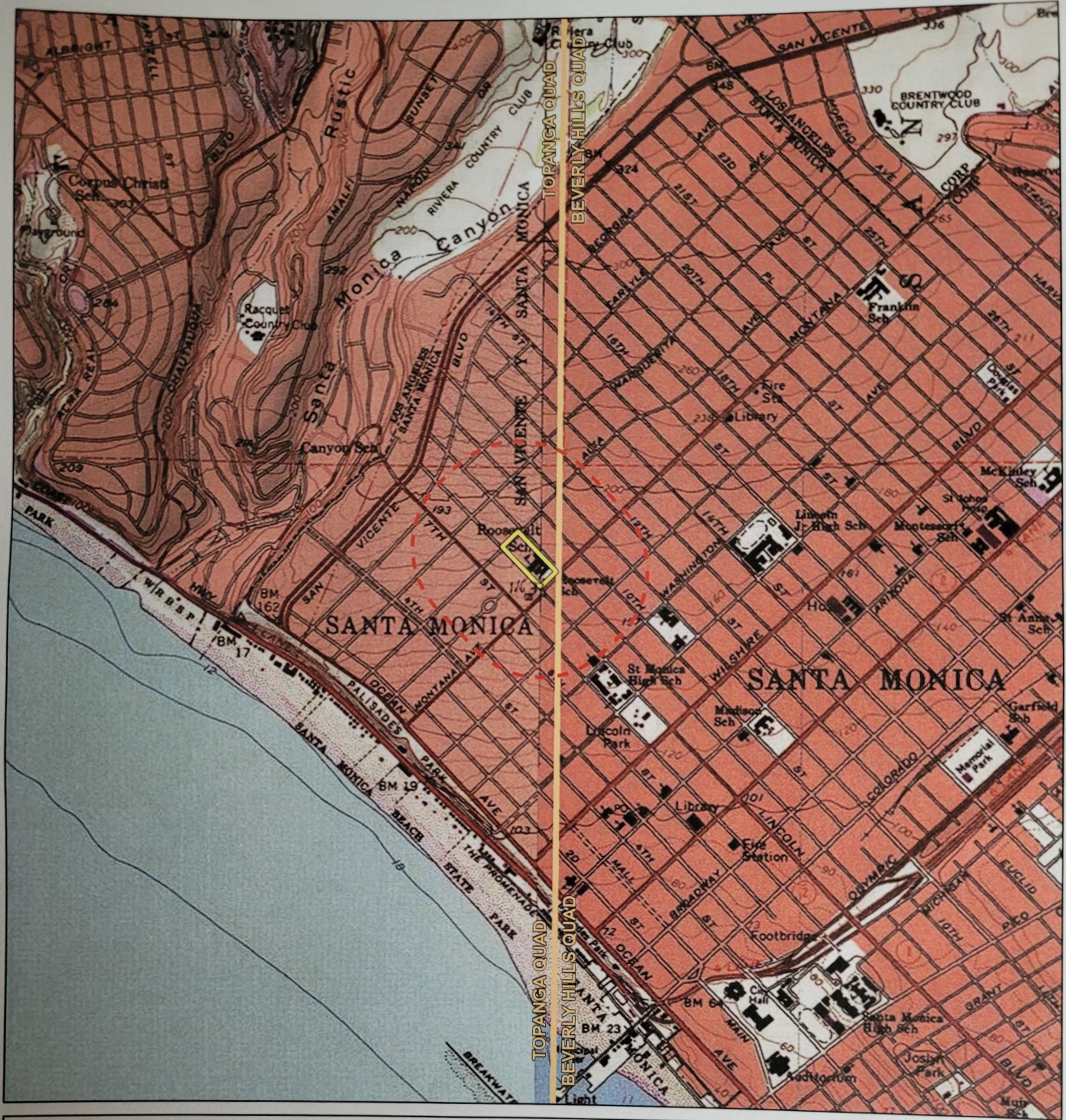
- 1/4 Mile Search Area
- Project Site

TOPANGA USGS 7.5-MINUTE TOPO QUAD
T 02 S R 16 W, SECTION 1 (UN-SURVEYED)
PART OF SAN VICENTE Y SANTA MONICA LAND GRANT



Attachment 2

South Central Coastal Information Center Records Search Results



Legend

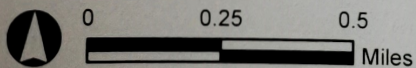
- 1/4 Mile Search Area
- Project Site

BH - 4 mylors
Topanga - 6 mylors

11633

TOPANGA USGS 7.5-MINUTE TOPO QUAD
T 02 S R 16 W, SECTION 1 (UN-SURVEYED)
PART OF SAN VICENTE Y SANTA MONICA LAND GRANT

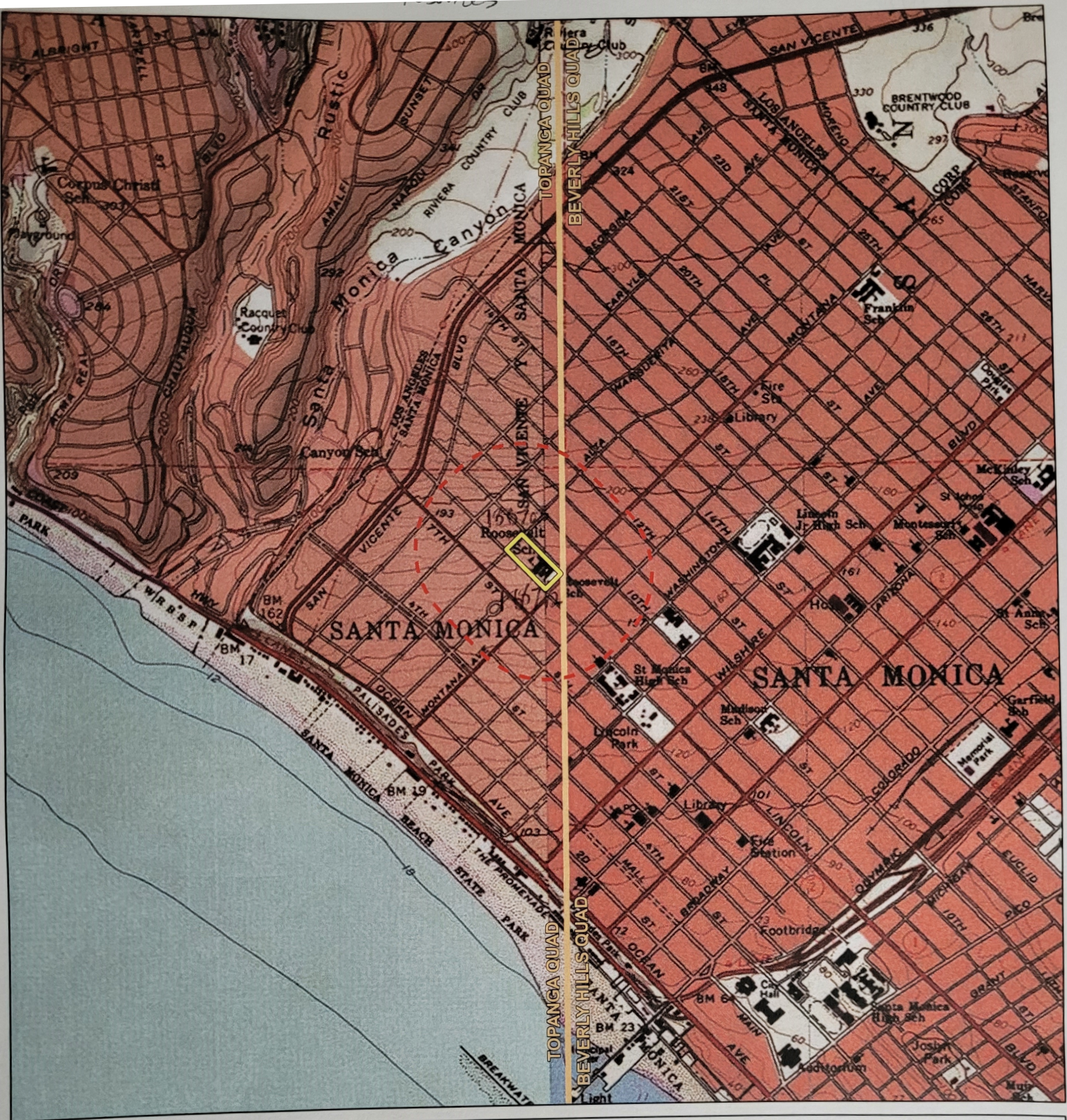
Michael Baker
INTERNATIONAL



Source: Esri, ArcGIS Online, Topanga USGS 7.5-Minute topographic quadrangle maps: Santa Monica, California

Roosevelt Elementary School Project
Santa Monica, CA

Record Search Map



Legend

1/4 Mile Search Area

Project Site

188768
188712

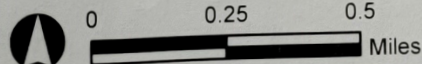
TOPANGA USGS 7.5-MINUTE TOPO QUAD
T 02 S R 16 W, SECTION 1 (UN-SURVEYED)
PART OF SAN VICENTE Y SANTA MONICA LAND GRANT

Beverly Hills - 13 resource enlargements, 11 report enlargements, 1 top

ROOSEVELT ELEMENTARY SCHOOL PROJECT
SANTA MONICA, CA

Record Search Map

Michael Baker
INTERNATIONAL



Source: Source: Esri, ArcGIS Online, Topanga USGS 7.5-Minute topographic quadrangle maps: Santa Monica, California

Topanga 6 resource enlargements 16 report enlargements 2 top

Report List

Roosevelt Elementary

Report No.	Other IDs	Year	Author(s)	Title	Affiliation	Resources
LA-11633		2011	Bonner, Wayne H. and Kathleen A. Crawford	Cultural Recourse Records Search and Site Visit Results for AT&T Mobility, LLC Candidate LAC319-01, USID 11915 (7th & Montana), 703 Montana Avenue, Santa Monica, Los Angeles County, California	Environmental Assessment Specialists	

Resource List

Roosevelt Elementary

Primary No.	Trinomial	Other IDs	Type	Age	Attribute codes	Recorded by	Reports
P-19-188708		Resource Name - Santa Monica Public Schools Thematic District	District	Historic	HP15	1993 (Leslie Heumann, City of Santa Monica)	LA-10603, LA-11908, LA-11994, LA-12373, LA-12721
P-19-188712		Resource Name - Roosevelt School	Building, Element of district	Historic	HP15	1993 (Leslie Heumann, City of Santa Monica); 2007	LA-10603, LA-11908

State of California - The Resources Agency
DEPARTMENT OF PARKS AND RECREATION
OFFICE OF HISTORIC PRESERVATION

HISTORIC RESOURCES INVENTORY

IDENTIFICATION AND LOCATION

1. Historic name [Potential Thematic District]
2. Common or current name Santa Monica Public Schools
3. Number & street See continuation sheets Cross-corridor _____
City Santa Monica Vicinity only _____ Zip _____ County LAN
4. UTM zone 11 A _____ B _____ C _____ D _____
5. Quad map No. _____ Parcel No. Multiple Other _____

Ser. No. _____
National Register Status 5D1
Local Designation _____

DESCRIPTION

6. Property category District If district, number of documented resources 6
7. Briefly describe the present physical appearance of the property, including condition, boundaries, related features, surroundings, and (if appropriate) architectural style.

The Santa Monica Public Schools Thematic District contains six schools city-wide which retain their historic appearance: McKinley School (2401 Santa Monica Boulevard), Franklin School (2400 Montana Avenue), Madison School (1018 Arizona Avenue), Roosevelt School (801 Montana Avenue), John Adams Junior High School (2355-2417 17th Street), and Grant School (2400 Pearl Street). Five of the campuses reflect the influence of the PWA Moderne style which was popular in the years following the 1933 earthquake when they were either constructed or rebuilt. The sixth, McKinley, although rehabilitated following the earthquake, retains its original Spanish Colonial Revival styling. All of the schools have been altered to some degree since the late 1930s, many having received additional buildings in 1940 and 1948. These six schools were identified as contributors to the thematic district based on their overall integrity. However, individual features of other campuses, including the stadium and bleachers at Santa Monica City College (Marsh, Smith and Powell, 1947), the open air theater at Santa Monica High School (1921), and the additions to Lincoln School (Parkinson, 1936) which may be intact could be added to the district.

*Attach photo envelope here
Put address and photo date on rear of photo

8. Planning agency City of Santa Monica
9. Owner & address Santa Monica Unified School District
10. Type of ownership Public
11. Present use Public
12. Zoning Public
13. Threats _____

Send a copy of this form to: State Office of Historic Preservation, P.O. Box 942896, Sacramento, CA 94296-0001

*Complete these items for historic preservation compliance projects under Section 106 (36 CFR 800). All items must be completed for historical resources survey information.

HISTORICAL INFORMATION

- *14. Construction date(s) 1924-48 F Original location _____ Date moved _____
15. Alterations & date _____
16. Architect See continuation sheets Builder See continuation sheets
17. Historic attributes (with number from list) 15—Educational Building

SIGNIFICANCE AND EVALUATION

18. Context for evaluation: Theme Institutions Area Santa Monica
 Period 1875-1943 Property type Schools Context formally developed? No
- *19. Briefly discuss the property's importance within the context. Use historical and architectural analysis as appropriate. Compare with similar properties.

The Santa Monica School District has historically been one of the most important aspects of life in Santa Monica. Almost as old as the town itself, the district was established in 1875 within months of the recording of the subdivision of Santa Monica and the first sale of lots for homesites. In 1876 the first school building to be erected in the young community opened at 6th Street and Arizona on land donated by the town founders, Senator John P. Jones and Colonel Robert S. Baker. Additional schools were built in the 1890s in South Santa Monica (Ocean Park) and in Santa Monica Canyon. Beginning with the construction of Lincoln High School at 10th and Arizona in 1897, a school building boom ensued, resulting in eight new schools in eighteen years. A high point of this activity, which mirrored the growth in residential construction, was the building of Santa Monica High School in 1912.

In 1933, the Long Beach earthquake substantially damaged all of the school buildings in Santa Monica as elsewhere in the region. As a result, the Santa Monica schools were

20. Sources
Santa Monica Building Permits
Los Angeles County Tax Assessment Records
City Directories, Sanborn maps
See continuation sheet
21. Applicable National Register criteria A, C
22. Other recognition _____
 State Landmark No. (if applicable) _____
23. Evaluator L. Heumann/Review Committee
 Date of evaluation 1992
24. Survey type Comprehensive
25. Survey name Historic Resources Inventory/Phase 3
- *26. Year form prepared 1993
 By (name) Leslie Heumann & Associates
 Organization City of Santa Monica
 Address 1685 Main Street
 City & Zip Santa Monica 90401
 Phone (310) 458 8341

*Sketch map. Show location and boundaries of property in relation to nearby streets, railways, natural landmarks, etc. Name each feature.



HISTORIC RESOURCES INVENTORY

Continuation Sheet: Santa Monica Public Schools

Significance:

closed, and classes were held in tents. Between 1934 and 1938, schools were rebuilt, meeting the earthquake safety standards mandated by the Field Act. Most of the reconstructive activity was accomplished with the assistance of the Works Progress Administration, supplemented by local funds. Santa Monica's historic schools thus mirror the architectural fashions of the mid and late 1930s, when architects were shedding traditional styles in favor of the stripped streamlining of the PWA Moderne. This stylistic trend links the schools from the period as well as the practice of facilitating access to the outdoors through individual entrances into classrooms, outdoor corridors, and interior courtyards.

The architects chosen to design the schools were amongst the best in the area. In the 1920s, Francis D. Rutherford of Santa Monica and Allison and Allison of Los Angeles provided the District with designs for Franklin, Madison and McKinley Schools. The reconstruction utilized the services of the premier school architects of the day, Marsh, Smith and Powell, and Parkinson and Parkinson, one of the leaders in architecture in Los Angeles. Subsequently, the District employed Joseph Estep, associate of Donald Parkinson in the design of the Santa Monica City Hall, and H. L. Gogerty for additions to some of the campuses.

These six schools represent the historic character of school design in Santa Monica. Each has been a focal point of their respective neighborhoods since the late 1930s or earlier. All have associations with architects of note as well as with thousands of past and present residents. The thematic district recognizes these contributions to the City.

State of California - The Resources Agency
DEPARTMENT OF PARKS AND RECREATION
OFFICE OF HISTORIC PRESERVATION

HISTORIC RESOURCES INVENTORY

19-188712
district: 19-18870

IDENTIFICATION AND LOCATION

1. Historic name Roosevelt School
2. Common or current name Roosevelt School
3. Number & street 801 Montana Avenue Cross-corridor AKA 733 Lincoln Blvd.
City Santa Monica Vicinity only _____ Zip 90402 County LAN
4. UTM zone 11 A _____ B _____ C _____ D _____
5. Quad map No. _____ Parcel No. 0-0-0 Other _____

Ser. No. _____
National Register Status 5D1
Local Designation _____

DESCRIPTION

6. Property category Building If district, number of documented resources _____
7. Briefly describe the present physical appearance of the property, including condition, boundaries, related features, surroundings, and (if appropriate) architectural style.

Roosevelt School occupies the city block bounded by Montana Avenue, Lincoln Boulevard, California Avenue, and 9th Street. It consists of a complex of one story buildings grouped around interior courtyards. The buildings are of wood frame construction, sheathed in stucco, and flat-roofed. Detailing suggests the influence of the Moderne style. Windows are arranged in vertical stacks and the proportions of the individual sash are echoed by horizontal grooving of raised piers. Notable features of the design include exterior corridors sheltered by flat roofs carried on pipe columns, individual access classrooms to the exterior, banks of windows which illuminate the classroom interiors, and the lettering over the main entry to the school.



Planning agency
City of Santa Monica

Owner & address
Santa Monica School District

Type of ownership Public

Present use Public

Zoning Public

13. Threats _____

Send a copy of this form to: State Office of Historic Preservation, P.O. Box 942896, Sacramento, CA 94296-0001

*Complete these items for historic preservation compliance projects under Section 106 (36 CFR 800). All items must be completed for historical resources survey information.

19-188712
district: 19-18870

HISTORICAL INFORMATION

14. Construction date(s) 1935/40 F Original location _____ Date moved _____
15. Alterations & date _____
16. Architect Marsh, Smith & Powell/Joe Estep Builder Owner/Owner & WPA
17. Historic attributes (with number from list) 15--Educational Building

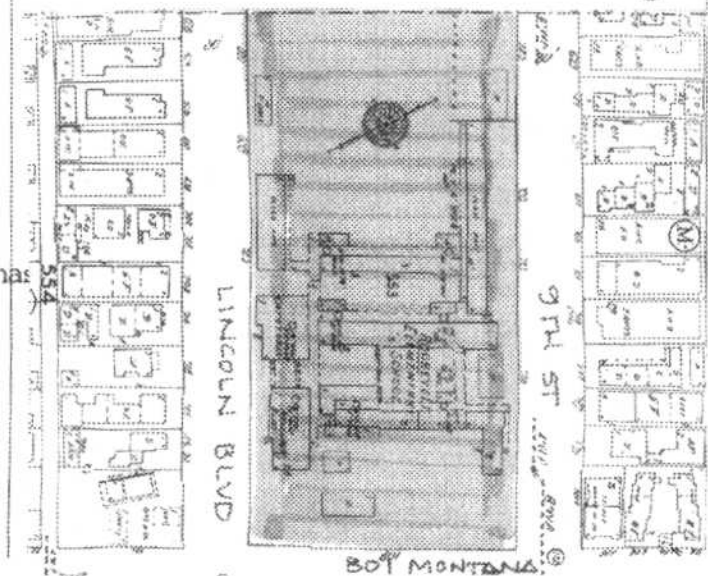
SIGNIFICANCE AND EVALUATION

18. Context for evaluation: Theme Institutions Area Santa Monica
Period 1875-1943 Property type Schools Context formally developed? No
19. Briefly discuss the property's importance within the context. Use historical and architectural analysis as appropriate. Compare with similar properties.

Roosevelt School is significant for its architectural associations and for its contribution to a thematic district of historic public schools in Santa Monica. The original Roosevelt School was located a few blocks away on 6th Street and Montana and was destroyed as a result of the 1933 Long Beach earthquake. Architects Marsh, Smith, and Powell, the premier school architects in the region during the late 1930s through the 1940s, were chosen to design the new facility in 1934. According to author James Lunsford (Looking at Santa Monica page 75), the school reflected the "'Santa Monica Plan' incorporating outdoor activity areas immediately accessible to classrooms." This model became the standard for most schools in Southern California, where the climate favored such a design. In 1940, architect Joe Estep designed provided the plans for new buildings at both Roosevelt and Grant Schools. Estep was well known in Santa Monica at the time as one of the architects of the new City Hall.

20. Sources
Santa Monica Building Permits
Los Angeles County Tax Assessment Records
City Directories, Sanborn maps
Ca. Arts & Architecture 9/35
21. Applicable National Register criteria A, C
22. Other recognition _____
State Landmark No. (if applicable) _____
23. Evaluator L. Heumann/Review Committee
Date of evaluation 1992
24. Survey type Comprehensive
25. Survey name Historic Resources Inventory/Phase
26. Year form prepared 1993
By (name) Leslie Heumann & Associates
Organization City of Santa Monica
Address 1685 Main Street
City & Zip Santa Monica 90401
Phone (310) 458 8341

Sketch map. Show location and boundaries of property in relation to nearby streets, railways, natural landmarks, etc. Name each feature.



CONTINUATION SHEET

Page 1 of 1

Resource Name or #: Roosevelt School

Recorded by: Jones & Stokes

Date: December 2007

☐ Continuation ☒ Update

Address on Inventory: 801 Montana Ave
Legal Address (Tax Assessor): 801 Montana Ave, Santa Monica, CA
Property Name: Roosevelt School

APN: 4280022900

Description: The property contains a two-story government owned property, which was originally constructed as a school. It was designed in the Moderne style. The resource is recorded in the Historic Resources Inventory with a prior evaluation of 5D1 - Phase 3. Also qualifies under local criterion A.4. This property does not appear to have been substantially altered since it was most recently surveyed and continues to appear eligible for listing as a contributor to a "Santa Monica Public Schools District" in the City.

Alterations: No significant alterations have occurred since the property was last evaluated.

Updated Status Code: 5D3

Historic District(s): Santa Monica Public Schools (formerly Schools)

Evaluation: The survey evaluated the resource on the property as falling under criterion A.1 - Contributes to a district that exemplifies, symbolizes, or manifests elements of the cultural, social, economic, political or architectural history of the City.



Santa Monica Citywide Historic Resources Survey

Prepared for: City of Santa Monica
1685 Main Street, Santa Monica, CA 90407-2200

Prepared by:
Jones & Stokes
811 W 7th ST, Suite 800
Los Angeles, CA 90017