

NOTICE OF EXEMPTION

TO:

- ☒ **Office of Planning and Research**
1400 Tenth St.
Sacramento, CA 95814
- ☒ **Shasta County Clerk**
1643 Market Street
Redding, CA 96001

FROM:

Mountain Gate Community Services District
14508 Wonderland Blvd.
Redding, CA 96003

Project Title: Mountain Gate Community Services District – Emergency Water Supply Improvement Project

Project Location: Proposed improvements are located within various locations near Shasta Lake and within the unincorporated community of Mountain Gate in Shasta County. As shown in **Figure 1**, booster pump station improvements would occur in Section 33, Township 34N, Range 4W and Section 4, Township 33N, Range 4W of the U.S. Geological Survey's (USGS) O'Brien 7.5-minute quadrangle and well improvements would occur at three separate locations in Section 16, Township 33N, Range 4W, of the USGS Project City 7.5-minute quadrangle. The Beaver Island Booster Pump Station is located in Shasta County Assessor's Parcel Number (APN) 085-280-019; the Lake Booster Pump Station is located in APN 307-010-001; Well 1A is located in APN 307-170-010; Well 2 is located in APN 307-170-011; and Well 3 is located in APN 307-170-005.

City: Mountain Gate (unincorporated)

County: Shasta

Description of Nature, Purpose, and Beneficiaries of Project: The project includes improvements to the Mountain Gate Community Services District (MGCSD) water supply system that are required in order to replace aging infrastructure and equipment, and ensure a safe and reliable potable water supply for MGCSD customers. The Beaver Island Pump Station and the Lake Booster Pump Station are both located on U.S. Forest Service (USFS) land just above the high-water mark of Shasta Lake with limited access and space for permanent emergency generators. Therefore, project improvements consist of purchasing portable generators and installing manual transfer switches at both pump stations. As shown in **Figures 2, 3, and 4**, improvements at three of the District's wells (Well 1A, Well 2, Well 3) include demolishing and replacing existing well and chlorination components; cleaning and air-developing the wells; installing new pitless adapters and protective bollards; and making various electrical upgrades including installing Supervisory Control and Data Acquisition (SCADA) equipment. In addition, the existing portable emergency generator utilized to power Wells 1A, 2, and 3 during power outages would be replaced with a new portable emergency generator at the Well 1A site.

Name of Public Agency Approving Project: Mountain Gate Community Services District

Name of Agency Carrying out the Project: Mountain Gate Community Services District

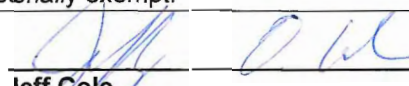
Local Agency Contact Person: Jeff Cole, General Manager, 530.275.3002

Exempt Status: Ministerial Exemption:

§15268 of the California Code of Regulations (CCR), Title 14, Division 6, Chapter 3.

Reason Why Project Is Exempt: §15268 of the CCR states that ministerial projects are exempt from the requirements of CEQA. As defined in §15268 of the CCR, a ministerial project is one that requires only conformance with a fixed standard or objective measurement and requires little or no personal judgment by a public official as to the wisdom or manner of carrying out the project. Generally, ministerial permits require a public official to determine only that the project conforms with applicable zoning and building code requirements. The proposed MGCSD booster pump station and well improvements do not require discretionary review by Shasta County or any other public agency; therefore, the project is ministerially exempt.

Signature:


Jeff Cole
General Manager

Date: 7-11-2023

Date Received for Filing at OPR: _____

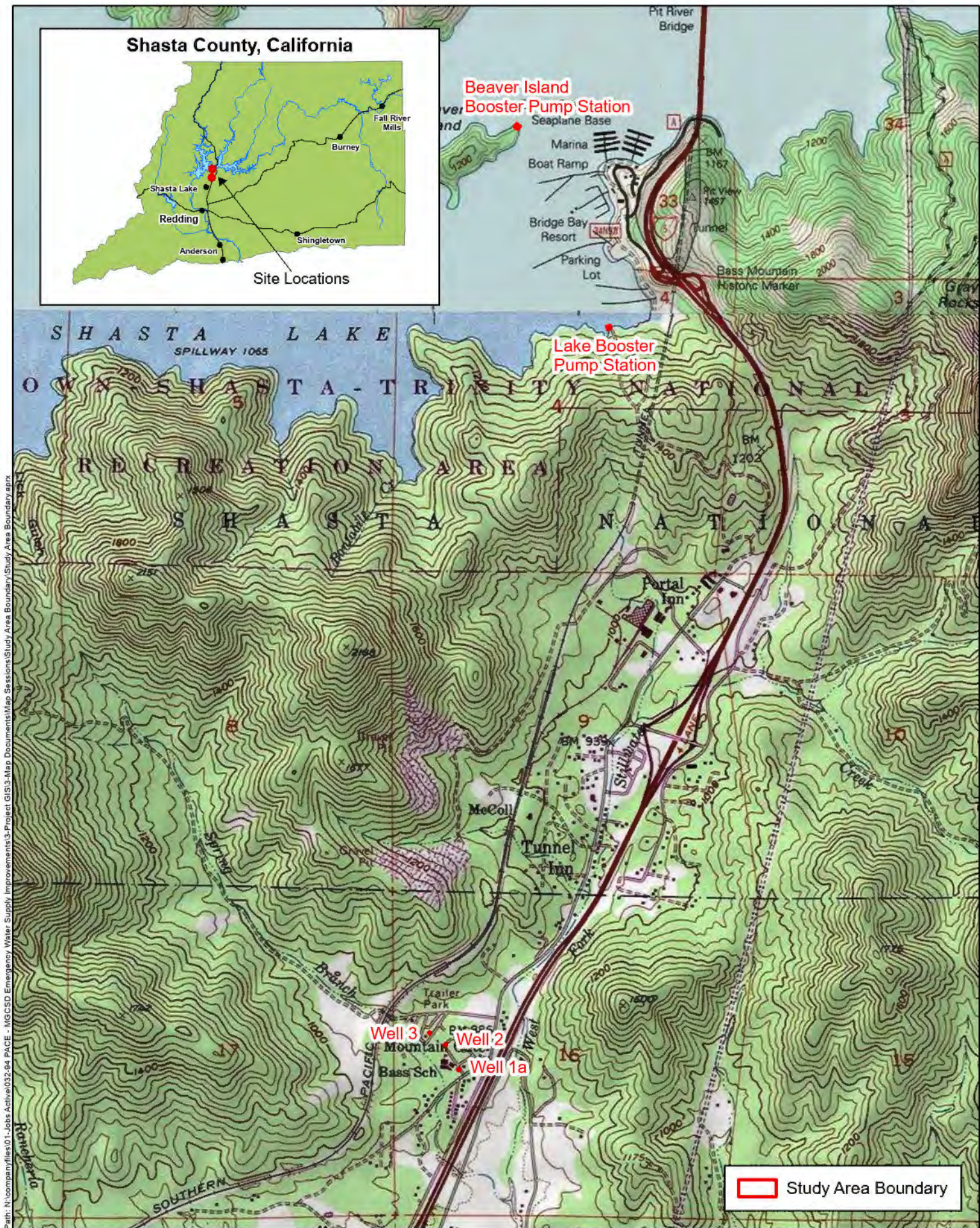
Attachments:

Figure 1: Project Location and Vicinity

Figure 2: Well 1A Plan

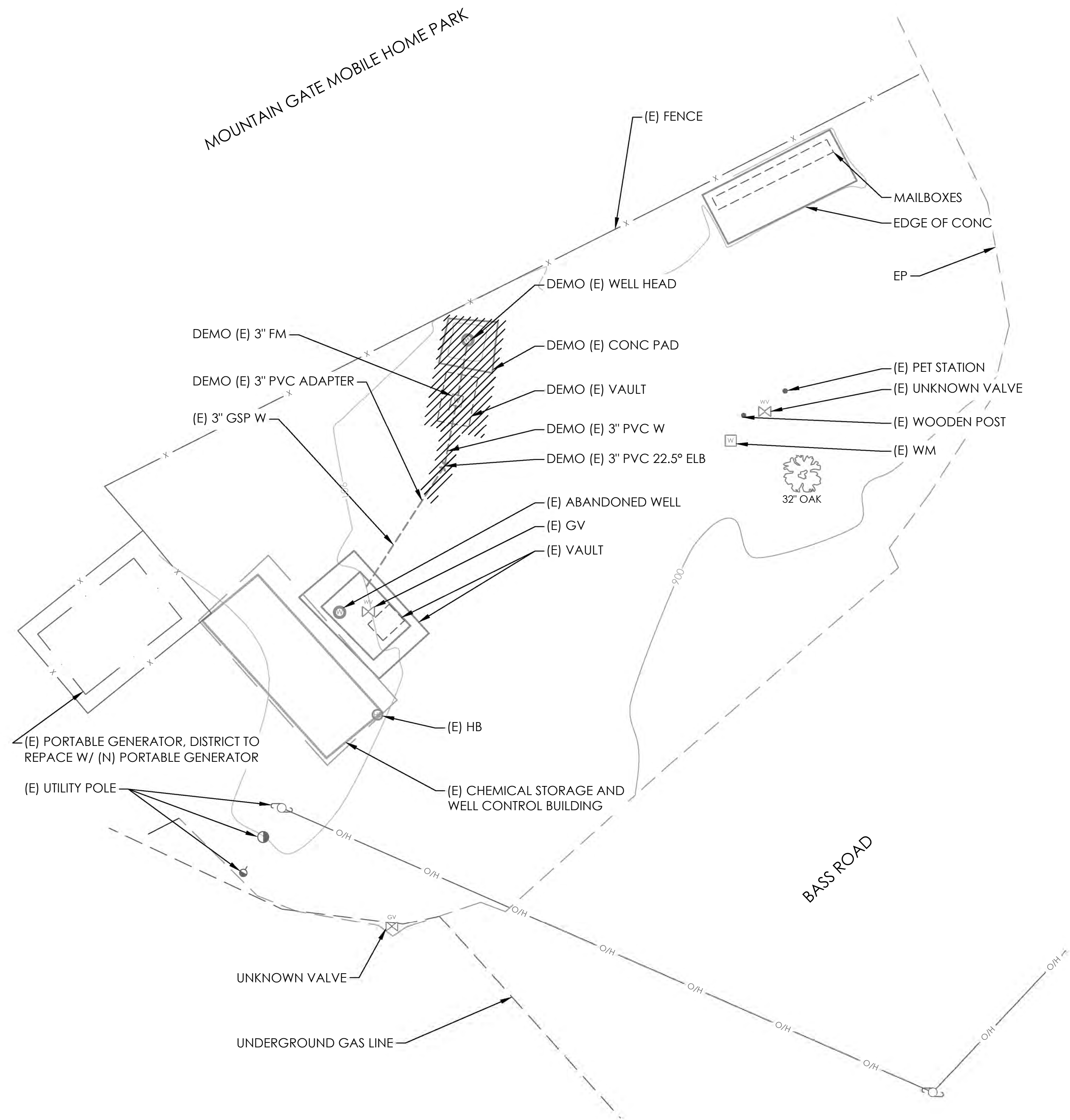
Figure 3: Well 2 Plan

Figure 4: Well 3 Plan

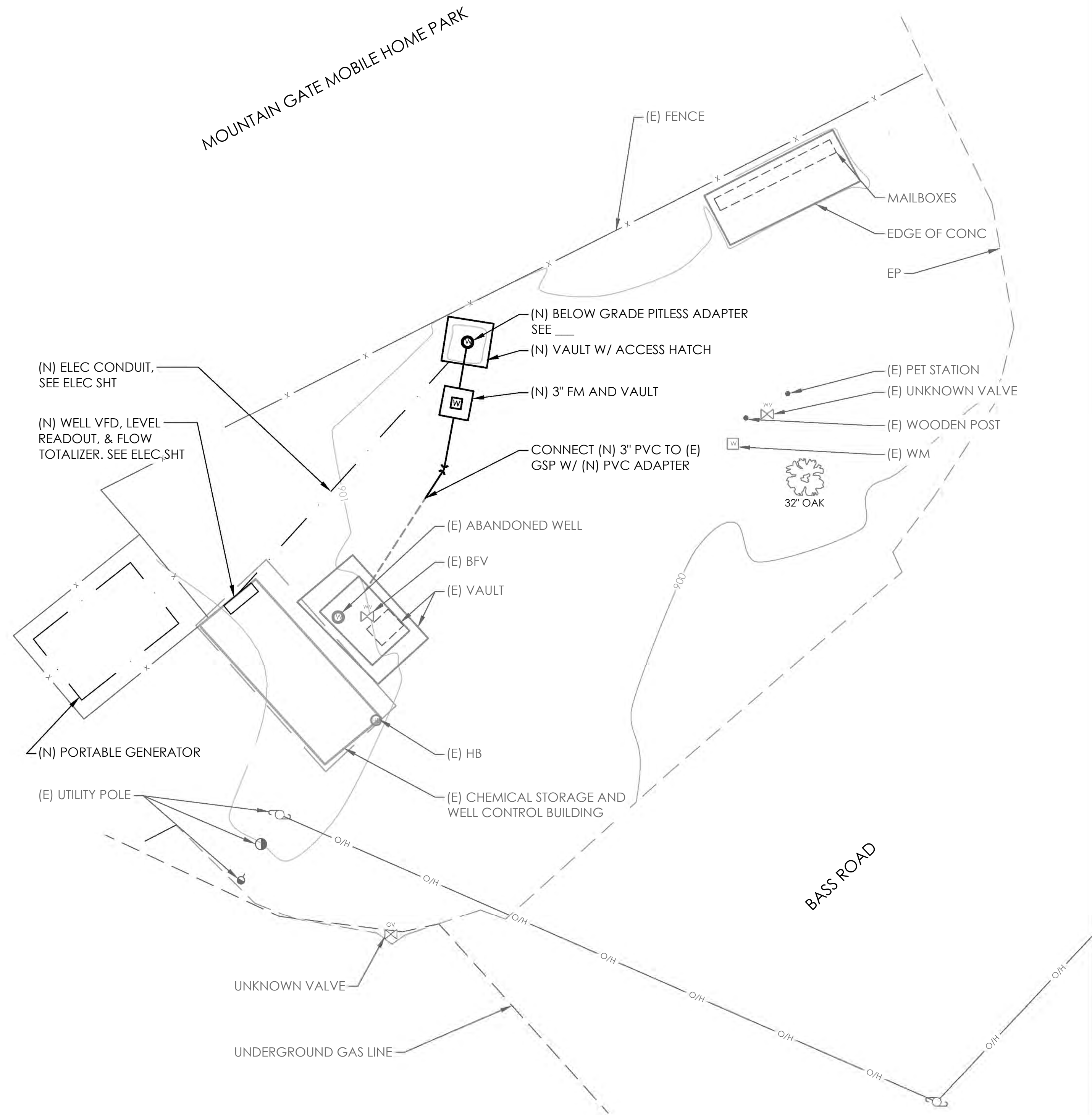


All depictions are approximate. Not a survey product.

07.05.23



WELL 1A DEMO PLAN
1"=5'



WELL 1A IMPROVEMENT PLAN
1"=5'

50% DRAFT

BAR IS ONE INCH ON ORIGINAL DRAWING
0' 1"
IF NOT ONE INCH ON THIS SHEET, ADJUST SCALES ACCORDINGLY.

REVISIONS		
NO	DATE	DESCRIPTION

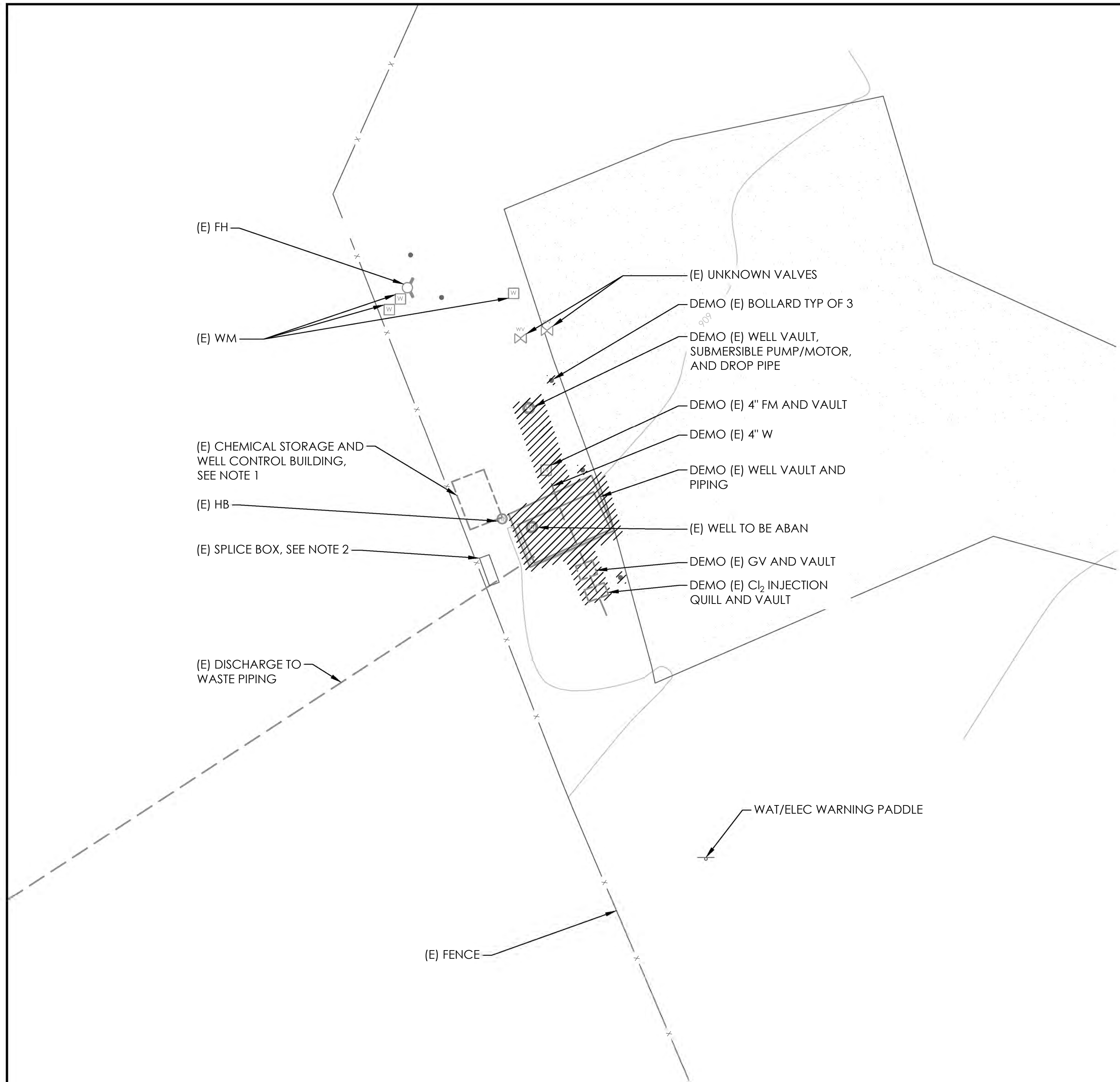
DES: MVZ	CKD: GH	JOB NO. 1639.16
DRN: MVZ	DATE: 7/3/23	

SIGNED
PRELIMINARY
NOT FOR
CONSTRUCTION

MOUNTAIN GATE CSD
EMERGENCY WATER SUPPLY IMPROVEMENT PROJECT
FIGURE 2
WELL 1A PLAN

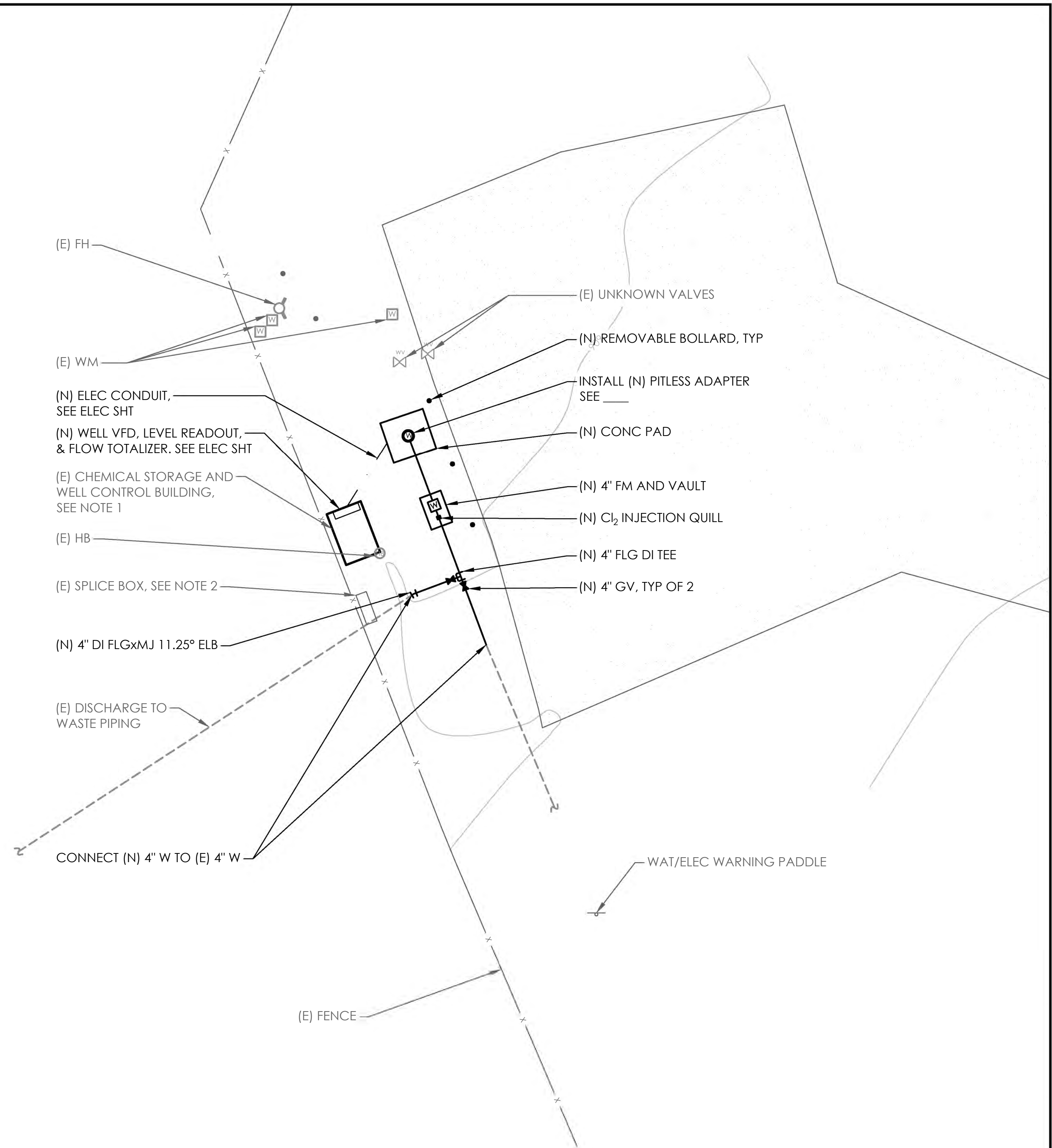
SHEET
C1.0
PG 2 OF 5

Plot Date: July 03, 2023 - 8:53 pm Log Name: mwanof
File Name: M:\Land Projects\1639.16 Emergency Water Supply Improvement Project\01_DWG\LS\DWG\WELL 1A Plan



- NOTES:
- DISTRICT TO DEMO (E) CHEMICAL STORAGE AND WELL CONTROL BUILDING AND CONSTRUCT (N) BUILDING
 - DISTRICT IS TO DEMO (E) SPLICE BOX


WELL 2 DEMO PLAN
 1"=5'





WELL 2 IMPROVEMENT PLAN
 1"=5'

50% DRAFT

BAR IS ONE INCH ON ORIGINAL DRAWING
 0' ————— 1"
 IF NOT ONE INCH ON THIS SHEET, ADJUST SCALES ACCORDINGLY.

REVISIONS		
NO	DATE	DESCRIPTION



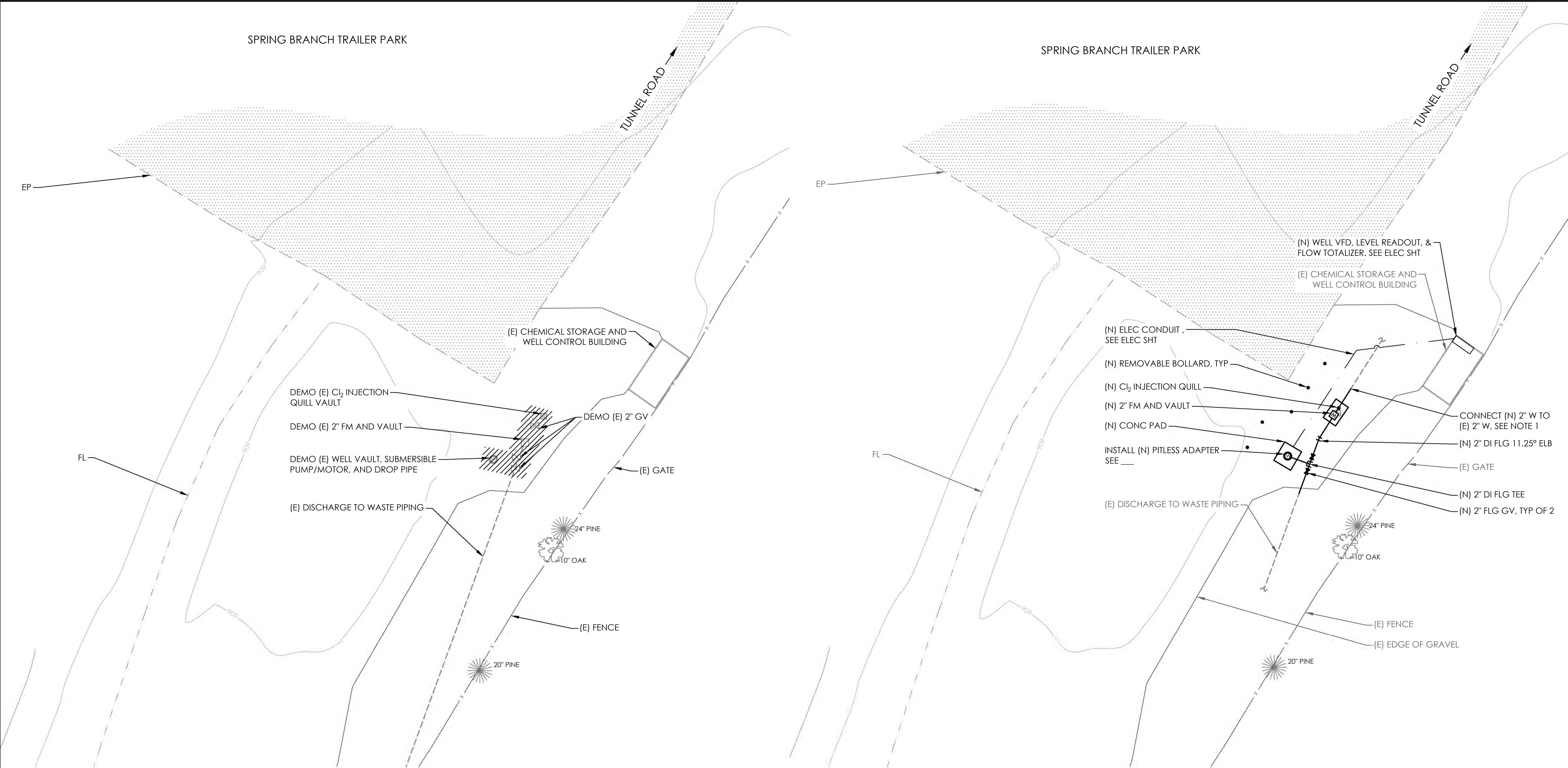
DES	MVZ	CKD	GH	JOB NO.
DRN	MVZ	DATE	7/3/23	1639.16

SIGNED
 PRELIMINARY
 NOT FOR
 CONSTRUCTION

MOUNTAIN GATE CSD
 EMERGENCY WATER SUPPLY IMPROVEMENT PROJECT
FIGURE 3
WELL 2 PLAN

SHEET
C1.1
 PG 3 OF 5

Plot Date: July 03, 2023 - 8:53 PM Logon Name: mvanoy
 File Name: M-Gate-Proj\63816 Emergency Water Supply Improvement Project\01_DWG\1_SDC\1 - WELLS PLAN\DWG Layout Well 2 Plan



NOTES:
1. CONTRACTOR TO POT HOLE AND VERIFY LOCATION OF EXISTING 2" W PRIOR TO CONSTRUCTION AT NO ADDN'L COST TO OWNER



WELL 3 DEMO PLAN
1"=5'



WELL 3 IMPROVEMENT PLAN
1"=5'

50% DRAFT

BAR IS ONE INCH ON ORIGINAL DRAWING
0" 1"
IF NOT ONE INCH ON THIS SHEET, ADJUST SCALES ACCORDINGLY.

REVISIONS		
NO	DATE	DESCRIPTION



DES	MVZ	CKD	GH	JOB NO.
DRN	MVZ	DATE	7/3/23	1639.16

SIGNED
PRELIMINARY
NOT FOR
CONSTRUCTION

MOUNTAIN GATE CSD
EMERGENCY WATER SUPPLY IMPROVEMENT PROJECT

FIGURE 4
WELL 3 PLAN

Plot Date: July 03, 2023 - 8:53 pm Login Name: mvanoy
File Name: M-Gate Projects\63916 Emergency Water Supply Improvement Project\01_DWG\LS\SD\WELL 3 PLAN.dwg - WELLS PLAN.dwg Layout: Well 3 Plan