

Mark Hagan
44715 17th Street East
Lancaster, CA 93535
(661) 723-0086
(661) 433-9956

August 11, 2020

Royal Investors Group, LLC
Attn: Ms. Kris Pinero
15821 Ventura Blvd, Suite 460
Encino, CA 91436

Dear Ms. Kris Pinero

Re: Update to the 2005 Biological Resource Assessment of APN 3150-008-069, Lancaster, California

Development has been proposed for APN 3150-008-069 (TTM 64877), Lancaster, California. This parcel has been redesignated as APN 3150-008-072. The approximately 10 acre (4 ha) study area was located north of Nugent Street and east of 20th Street East. The purpose of this update was to determine whether or not the original 2005 report was still valid (Hagan 2005).

The original report noted the area was characteristic of a highly disturbed field. The western and southern boundaries were developed. The northern boundary was a graded field with ongoing construction activities. Chicken wire fencing and a single family home was present along the eastern boundary (Figure 1). The original report indicated eight plant and ten wildlife species or their sign were observed on 24 September 2005. A potential desert kit fox den was observed within the study area but no other desert kit fox sign was noted. No desert tortoises, Mohave ground squirrels, or burrowing owls were present within the study area. Cover sites that could be used by burrowing owls in the future were present. A burrowing owl survey was recommended 30 days prior to ground disturbing activities. No suitable habitat for sensitive plant species was observed during the original survey. The project was not expected to result in a significant adverse impact to biological resources.

The area is still characteristic of a highly disturbed field. Single family residences, both occupied and under construction, are now present along the northern boundary. Single family residences are present along the eastern boundary (Figure 2).

A field survey was conducted on 8 August 2020 to assess biological resources. Weather conditions consisted of warm temperatures (estimated 95 degrees F), 0% cloud cover, and moderate wind. A total of 4 transects were walked in an east-west orientation to obtain a representative sample of the study area. Photographs of the study area were taken (Figure 3).

During the 8 August 2020 survey eight additional plants were observed within the study site (Table 1). Two additional wildlife species were observed within the study site (Table 1). No desert kit foxes (*Vulpes macrotis*) or their sign were observed within the study area.



Figure 1. Aerial photo (Google Earth, 2005) showing surrounding land uses.

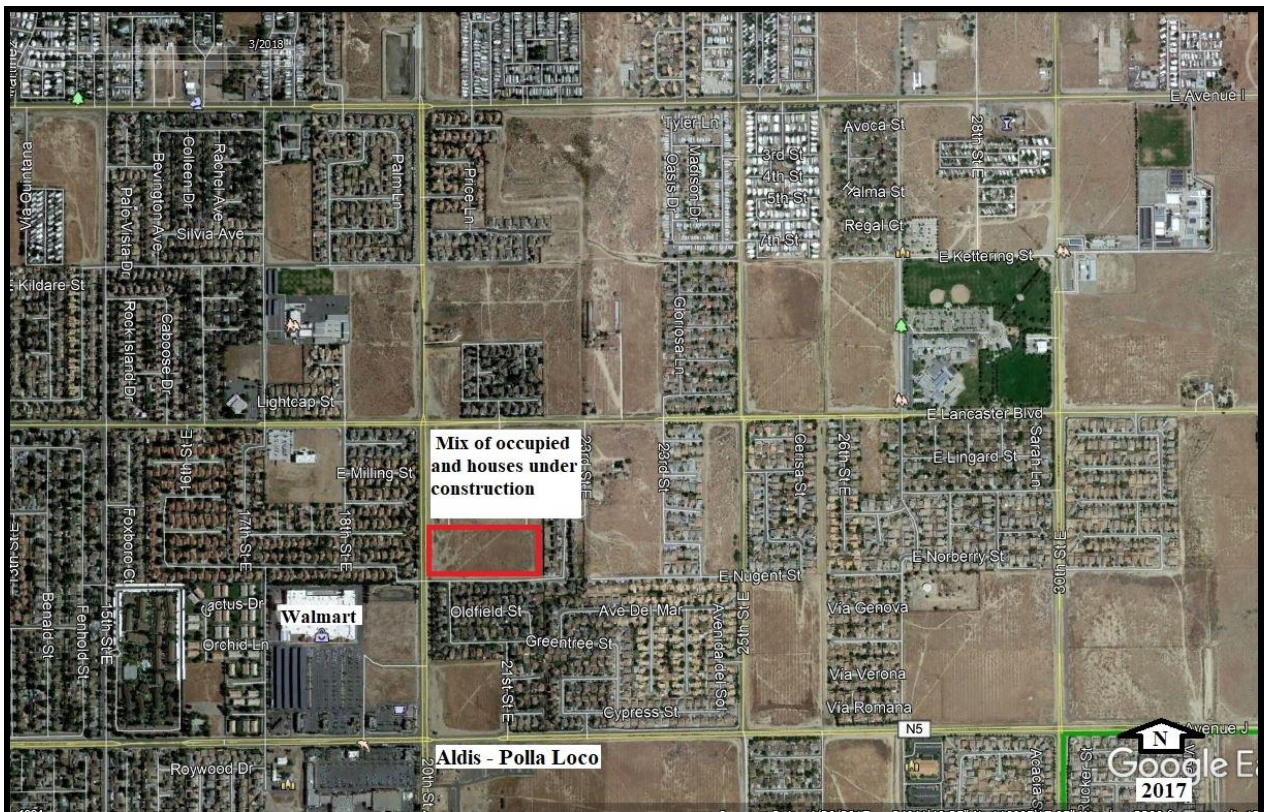


Figure 2. Aerial photo (Google Earth, 2017) showing surrounding land uses.



Southwest corner looking east.



Southwest corner looking north.

Figure 3. Representative photographs of the study site.

Table 1. List of additional plant and wildlife species that were observed during the line transect survey of APN 3150-008-069, Lancaster, California.

<u>Common Name</u>	<u>Scientific Name</u>
Jimson weed	<i>Datura meteloides</i>
Fiddleneck	<i>Amsinckia tessellata</i>
Vinegar weed	<i>Trichostema lanceolatum</i>
Spotted buckwheat	<i>Eriogonum maculatum</i>
Annual burweed	<i>Franseria acanthicarpa</i>
Horseweed	<i>Canyza honariensis</i>
Foxtail barley	<i>Hordeum leporinum</i>
Red brome	<i>Bromus rubens</i>
Domestic cat	<i>Felis sp.</i>
Common Raven	<i>Corvus corax</i>

Although plant species diversity increased within the study site since 2005, the additional plants were common and primarily invasive species. Two wildlife species were observed not originally observed in 2005. These animals were common urban species. Additionally, the potential desert kit fox den is no longer present. Increased development around the project site has eliminated potential areas where desert kit foxes could move into the project site. All burrows currently within the study site are associated only with California ground squirrels. The project area has continued to degrade eliminating native wildlife species. The project site is now surrounded by development on all four sides. Many of the fields that were nearby have now been developed.

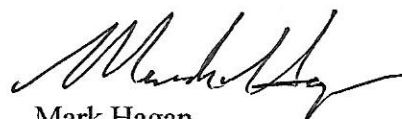
The 2005 report reflects the current condition of the project site with the deletion of potential desert kit fox presence. The 2005 biological report is still valid.

Literature Cited

Hagan, Mark. 2005. "Biological resource assessment of apn 3150-008-069, lancaster, california."
Mark Hagan, 44715 17th Street East, Lancaster, California. 10pp.

Please let me know if you have any questions.

Sincerely,



Mark Hagan
Wildlife Biologist