

# **Addendum #2 to 2023 Subsequent Mitigated Negative Declaration**

**Water System Reconstruction Project-  
Water Supply and Storage Improvements  
SCH No. 2020080439**

Mendocino Unified School District

5 May 2026

# Contents

<b>1. Introduction</b>	<b>1</b>
1.1 Project Background	1
1.2 Proposed Minor Modifications	1
1.3 Purpose of Addendum	2
<b>2. Project Modification</b>	<b>2</b>
2.1 Proposed Channel Reroute and Restoration	2
2.2 Restoration Planting and Site Stabilization	3
2.3 Monitoring and Compliance Measures	3
<b>3. Analysis of Potential Environmental Effects</b>	<b>3</b>
<b>4. List of Preparers</b>	<b>4</b>
4.1 Mendocino Unified School District	4
4.2 GHD	4

## Figures:

Figure 1 – Vicinity Map	5
Figure 2 – Delineated Aquatic Resources	6
Figure 3 – Existing and Proposed Aquatic Resources	7

## Attachments:

Attachment 1 – Restoration Plan Set

# 1. Introduction

## 1.1 Project Background

The Mendocino Unified School District (MUSD) owns, operates and maintains a potable and fire water system to serve its K-8 School, High School and District Office, as well as Friendship Park, the Community Center of Mendocino, and a number of irrigation areas affiliated with these primary consumers. The water supply and storage site is located at 44020 Little Lake Road in Mendocino County (see Figure 1, Vicinity Map).

A previous inspection conducted by the State Water Resources Control Board (SWRCB) Division of Drinking Water (DDW) identified several system deficiencies, and key components of the MUSD's water system infrastructure have reached the end of their useful life. The MUSD prepared a Water System Plan Report to address water system deficiencies and to evaluate alternatives for water sources, water storage and water treatment design. Based on the Water System Plan Report, the MUSD plans to improve its potable water system assets and operations to meet regulatory requirements. Improvements to meet long-term service needs include providing sufficient storage to meet NFPA and California Fire Code requirements, providing water supply redundancy, and protecting the integrity of the water system by replacing assets beyond their service life to ensure the health and safety of students, faculty and public who rely upon the potable and fire water system. Specifically, the MUSD plans to deconstruct and replace its two existing water storage tanks with new water storage tanks that meet current seismic design standards and provide sufficient storage capacity for the recommended operational, emergency and fire storage. The MUSD would also replace their existing water treatment building, redevelop/reconstruct two existing groundwater supply wells, convert one existing test well to an operational groundwater supply well, and construct a new access driveway.

Additionally, in 2022, the Mendocino City Community Services District (MCCSD), in cooperation with the MUSD, received a grant in response to a drought scenario from the State of California Department of Water Resources through the Urban and Multibenefit Drought Relief (UMBDR) grant program to help serve community emergency water needs. The UMBDR grant Agreement identifies the MUSD and MCCSD as Implementing Agencies and includes the development of potable water storage at the MUSD's water supply and storage site, and the drilling of new groundwater test wells at the MUSD's water supply and storage site to explore the viability of additional water supply for emergency purposes. Viable wells would also help to meet source production and supply reliability required by the Division of Drinking Water.

On June 28, 2023, the MUSD adopted a Subsequent Mitigated Negative Declaration (Subsequent MND) and Mitigation Monitoring and Reporting Program pursuant to the California Environmental Quality Act (CEQA). Following adoption of the Subsequent MND, the MUSD obtained a Coastal Development Permit for the project, which was approved by the County of Mendocino Department of Planning and Building Services (U\_2023-0004). As part of the ongoing water project, two groundwater test wells were installed along the property frontage at the MUSD's water supply and storage site located at 44020 Little Lake Road in the Mendocino community. The test wells were installed to evaluate the viability of water source capacity and redundancy, a key issue identified by the Division of Drinking Water for the MUSD's water system. Based on the findings, the MUSD proposed converting one of the test wells into a permitted production well to serve as a supplemental source and to fill fire protection and water supply storage tanks during the wet season, without increasing overall water use. The improvements carried out to date and the proposed conversion of a test well are adequately covered by the previously adopted Subsequent MND, and the MUSD has applied for a Coastal Development Permit Amendment for the proposed well conversion.

## 1.2 Proposed Minor Modifications

As part of the Coastal Development Permit amendment (CDP) process and associated resource permitting requirements, MUSD is proposing a modification to the approved project consisting of a stream restoration component. This modification was developed through coordination and consultation with California Department of Fish and Wildlife and responds to proposed conditions of approval identified during CDP review. The proposed restoration would reroute and restore an existing watercourse on the MUSD property to establish a new open channel intended to improve channel stability, continuity, and overall stream function. This restoration component constitutes a modification to the previously approved project and is the subject of this Addendum. The project additions are described in Section 2 of this Addendum.

### 1.3 Purpose of Addendum

As directed by CEQA Guidelines Section 15162, when an MND has been adopted for a project, no subsequent MND shall be prepared, unless one or more of the following circumstances occur:

1. Substantial changes are proposed in the project which will require major revisions of the previous MND due to the involvement of new significant environmental effects or a substantial increase in the severity of previously identified significant effects;
2. Substantial changes occur with respect to the circumstances under which the project is undertaken which will require major revision of the previous MND due to the involvement of new significant environmental effects or a substantial increase in the severity of previously identified significant effects;  
or
3. New information of substantial importance, which was not known and could not have been known with the exercise of reasonable diligence at the time the previous MND was adopted, shows any of the following:
  - a. The project will have one or more significant effects not discussed in the previous MND;
  - b. Significant effects previously examined will be substantially more severe than shown in the previous MND;
  - c. Mitigation measures or alternatives previously found not to be feasible would in fact be feasible and would substantially reduce one or more significant effects of the project, but the project proponents decline to adopt the mitigation measure or alternative; or
  - d. Mitigation measures or alternatives which are considerably different from those analyzed in the previous MND would substantially reduce one or more significant effects on the environment, but the project proponents decline to adopt the mitigation measure or alternative.

The changes in environmental impacts due to modifications in the project or changed conditions have been evaluated and measured against the standards set forth in paragraphs 1, 2, and 3 above. The environmental analysis is provided in Section 3 of this Addendum.

## 2. Project Modification

The following project modifications have been proposed since adoption of the first Addendum of the Subsequent MND, in response to a proposed condition of approval for a Coastal Development Permit Amendment. These modifications consist of a restoration component that was developed in coordination, and requested through consultation with, CDFW as part of the Coastal Development Permit Amendment and resource permitting and approval requirements.

### 2.1 Proposed Channel Reroute and Restoration

The project site includes two unnamed watercourses, referred to as WC1 and WC2 (see Figure 2 Delineated Aquatic Resources). WC1 and WC2 merge on site and eventually drain to Slaughterhouse Gulch off site. WC2 originates from a headwater swale and forms a narrow channel with generally perennial flow that increases during rain events. Downstream of the swale, WC2 has been culverted in multiple locations and re-aligned in a straight, engineered configuration, including a combination of open channel segments, buried pipes, and culverts. WC2 would be rerouted and restored (see Figure 3 Existing and Proposed Aquatic Resources) to improve channel function and continuity. Approximately 145 linear feet of new open channel would be constructed along a northwest alignment, as shown on the project plans (Attachment 1, Restoration Plan Set). There are three existing culverts along WC2. The reroute would begin immediately upstream of the second downstream culvert and would reconnect with WC1 just downstream of the third downstream culvert.

#### **Construction Activities and Culvert Abandonment**

Construction activities associated with the reroute and restoration would include excavation and grading to form the new channel alignment. Temporary disturbance would occur within the existing channel at the upstream and downstream connection points. The channel would be constructed from downstream, and progress to the upstream connection point. A temporary silt fence would be installed at the upstream end of the restored channel and around the upstream culvert entrance to filter any sediment generated during construction. Following completion of the rerouted channel, the abandoned culvert would be sealed and decommissioned, and the existing

drainage ditch adjacent to the Maintenance Building would be filled and revegetated, consistent with the Restoration Plan.

## **2.2 Restoration Planting and Site Stabilization**

Following construction, disturbed areas would be scarified to a depth of approximately three inches. A two-inch layer of organic, weed-free compost would be applied and incorporated into the soil, followed by light compaction and seeding with approved native upland and channel seed mixes. Approximately seven trees and 33 shrubs would be planted along both sides of the restored channel, and approximately 115 sedges would be installed within the channel. The detailed restoration and planting plan is provided in Attachment 1.

## **2.3 Monitoring and Compliance Measures**

Monitoring of planted areas would occur for a five-year period to verify 80% survival rate of the trees and shrubs at the end of the monitoring period. If the survival rate falls below 80%, replacement trees and shrubs would be planted. Standard best management practices to prevent erosion and control sediment from entering the stream would be implemented before, during, and after construction. All work would be conducted in accordance with applicable regulatory agency permit conditions to minimize impacts to aquatic resources and wildlife and to ensure long-term channel stability.

# **3. Analysis of Potential Environmental Effects**

The proposed project modifications would result in the restoration and rerouting of an existing degraded watercourse, including the construction of approximately 145 linear feet of new open channel. These changes are restorative in nature and are intended to improve channel function, continuity, and ecological conditions relative to existing on-site conditions. Construction activities associated with the proposed modifications would result in short-term, temporary impacts related to excavation and grading to establish the new channel alignment, as well as limited disturbance at the upstream and downstream connection points to the existing channel.

Temporary erosion and sediment control measures would be implemented during construction to minimize the potential for sediment generation and off-site transport. These measures would include installation of a temporary silt fence near the upstream connection point and culvert entrance, as well as implementation of best management practices during grading, channel construction, and culvert abandonment. Temporary disturbance would also occur during site restoration activities following construction, including soil scarification, compost application, revegetation, and planting.

The temporary impacts associated with the proposed modifications are primarily related to restoration activities intended to re-establish native vegetation and stabilize disturbed soils. Upon completion of construction and revegetation, disturbed areas would be restored with native upland and channel vegetation, including trees, shrubs, and sedges, consistent with the approved Restoration Plan. Monitoring of restoration areas would occur for a five-year period to ensure successful establishment and long-term stability.

Overall, the project area would be left in an improved condition compared to existing conditions. The restored open channel and revegetated areas would provide enhanced ecological function, improved hydrologic connectivity, and increased habitat value relative to the existing engineered and culverted configuration. The proposed modifications do not introduce new land uses, intensify site development, or expand the project footprint beyond what was previously evaluated.

The proposed project modifications would not result in new significant environmental effects or a substantial increase in the severity of previously identified impacts related to aesthetics, air quality, biological resources, cultural resources, paleontological resources, hazardous materials, hydrology and water quality, tribal cultural resources, wildfire, or other environmental topics addressed in the Subsequent MND. No new mitigation measures beyond those identified in the adopted Subsequent MND are required to address the proposed restoration activities. No changes in circumstances or new information of substantial importance have been identified that would trigger the need for additional environmental review.

In summary, the proposed project modifications are restorative in nature, would result in temporary and fully mitigated construction-related impacts, and would ultimately improve site conditions compared to the existing environment. The project changes do not result in new significant environmental effects or a substantial increase

in the severity of previously identified significant effects. Based on these findings, an Addendum to the adopted Subsequent MND is appropriate to meet CEQA requirements for the proposed project modifications, reflecting the analysis by MUSD as the CEQA lead agency.

## **4. List of Preparers**

### **4.1 Mendocino Unified School District**

Jason Morse, Superintendent

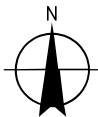
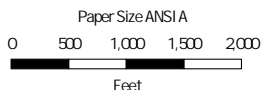
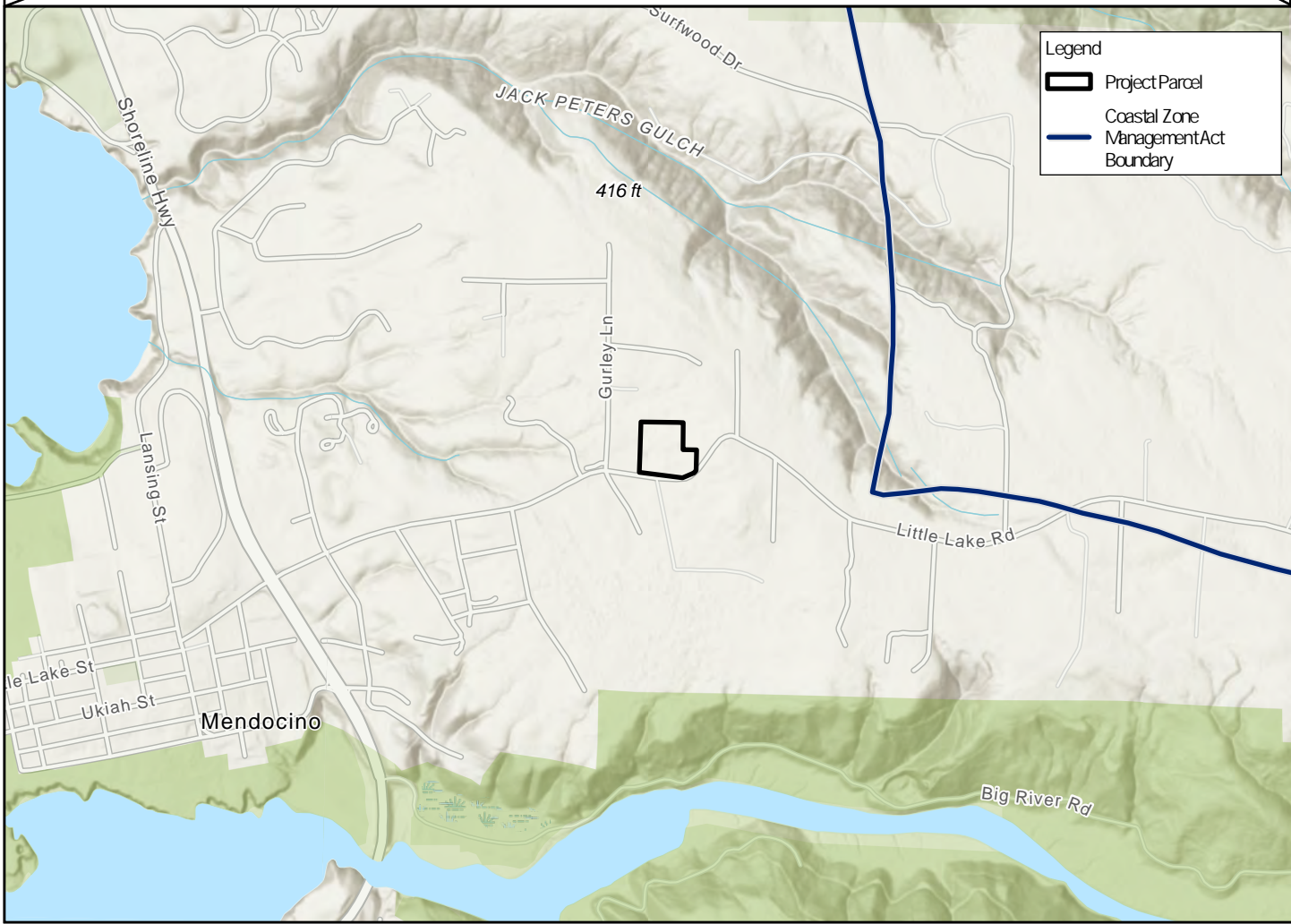
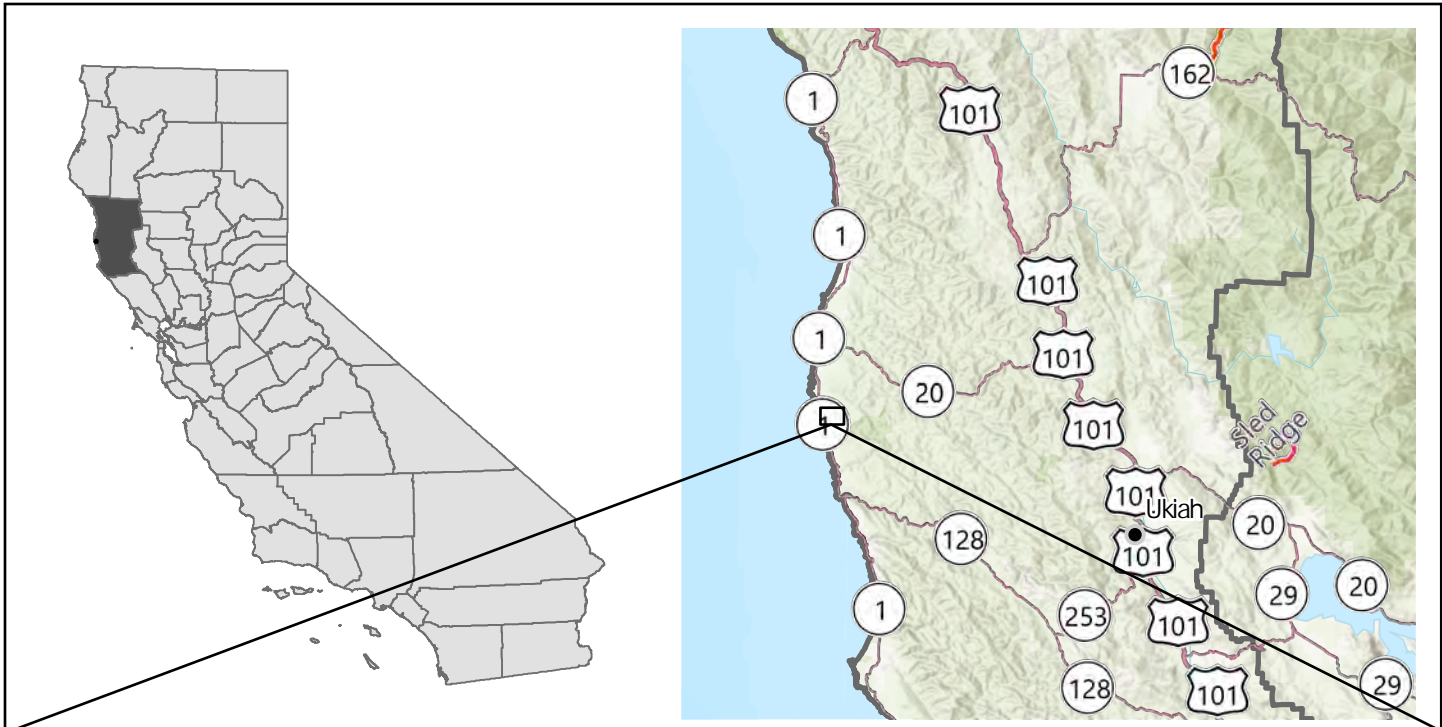
### **4.2 GHD**

Matt Kennedy, Project Manager

Kristine Gaspar, Senior Environmental Planner

Brian Bacciarini, Quality Control Review

Kunal Kardile, Environmental Planner



Mendocino City CSD  
PW Drought Tolerance Supply  
and Storage Improvements

Project No. 12584992  
Revision No. -  
Date September 2024

Map Projection: Mercator Auxiliary Sphere  
Horizontal Datum: WGS 1984  
Grid: WGS 1984 Web Mercator Auxiliary Sphere

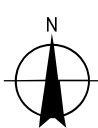
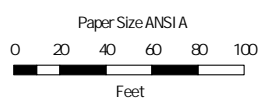
Vicinity Map

FIGURE 1

\\ghdnet\ghd\US\Santa Rosa\Projects\66112584992\GIS\Maps\Deliverables\12584992\_MCCSD\_WaterSupplyStorage.aprx - 12584992\_01\_Vicinity Print date: 10 Sep 2024 - 14:28  
Data source: World Terrain Base: California State Parks, Esri, TomTom, Garmin, SafeGraph, GeoTechnologies, Inc., METANASA, USGS, Bureau of Land Management, EPA, NPS, US Census Bureau, USDA, USFWS; World Topographic Map - labels: California State Parks, Esri, TomTom, Garmin, SafeGraph, GeoTechnologies, Inc., METANASA, USGS, Bureau of Land Management, EPA, NPS, US Census Bureau, USDA, USFWS; transportation: USGS The National Map National Transportation Dataset U.S. Census Bureau - TIGER/Line; U.S. Forest Service; Data Refreshed July, 2024; World Topographic Map -



- Legend**
- Transect Point
  - Upland Point
  - Watercourse Crossing
  - 1-Parameter Wetland
  - 3-Parameter Wetland
  - Watercourse
  - Project Study Boundary



Mendocino City CSD  
PW Drought Tolerance Supply  
and Storage Improvements

Project No. 12584992  
Revision No. -  
Date September 2024

Map Projection: Lambert Conformal Conic  
Horizontal Datum: North American 1983  
Grid: NAD 1983 StatePlane California II FIPS 0402 Feet

**Delineated Aquatic Resources**

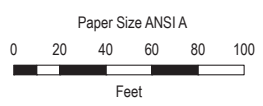
**FIGURE 2**



- Legend**
- Watercourse Crossing
  - 1-Parameter Wetland
  - 3-Parameter Wetland
  - Watercourse
  - Project Study Boundary
- Drainage Channel Reroute & Habitat Restoration**
- Channel Seed Mix
  - New Drainage Channel
  - Upland Seed Mix

Existing Watercourse

Proposed Stream Restoration



Mendocino City CSD (MUSD)  
Stream Restoration Project

Project No. 12584992  
Revision No. -  
Date March 2026

Map Projection: Lambert Conformal Conic  
Horizontal Datum: North American 1983  
Grid: NAD 1983 StatePlane California II FIPS 0402 Feet

Existing & Proposed Aquatic Resources

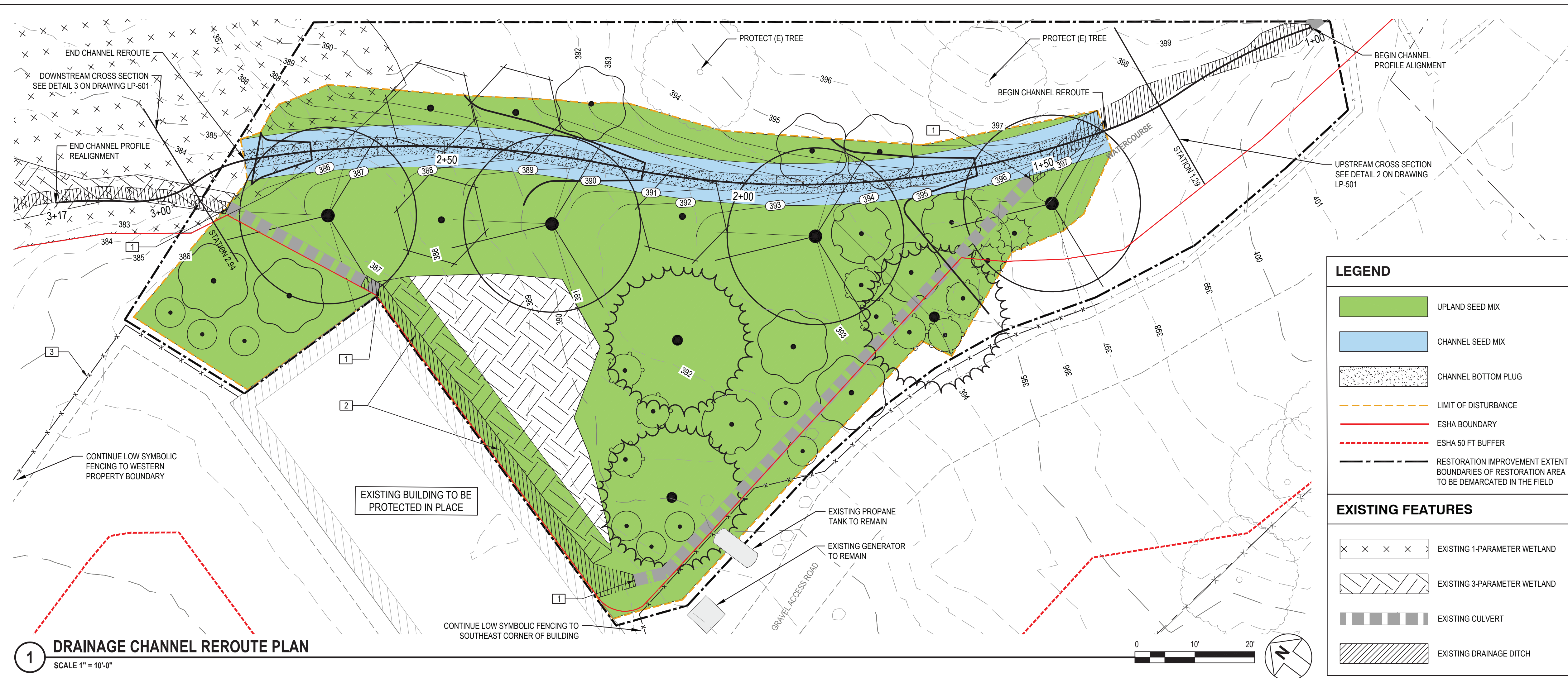
FIGURE 3

\\ghdnet\ghd\US\Azure\East\US\12584992\GIS\Maps\Deliverables\12584992\_MCCSD\_WaterSupplyStorage.aprx  
Print date: 16 Mar 2026 - 13:05

Data source: World Hillshade: Sources: Esri, Vantor, Airbus DS, USGS, NGA, NASA, CGIAR, N Robinson, NCEAS, NLS, OS, NMA, Geodaststyreisen, Rijkswaterstaat, GSA, Geoland, FEMA, Intermap, and the GIS user community  
World Imagery (Clarity): This work is licensed under the Esri Master License Agreement. View Summary | View Terms of Use. Export: This layer is not intended to be used



**Attachment 1**



**LEGEND**

- UPLAND SEED MIX
- CHANNEL SEED MIX
- CHANNEL BOTTOM PLUG
- LIMIT OF DISTURBANCE
- ESHA BOUNDARY
- ESHA 50 FT BUFFER
- RESTORATION IMPROVEMENT EXTENT. BOUNDARIES OF RESTORATION AREA TO BE DEMARCATED IN THE FIELD

**EXISTING FEATURES**

- EXISTING 1-PARAMETER WETLAND
- EXISTING 3-PARAMETER WETLAND
- EXISTING CULVERT
- EXISTING DRAINAGE DITCH

**DESIGN NARRATIVE**

CHANNEL HYDRAULIC DESIGN:

- THE CHANNEL WAS DESIGNED TO PREVENT SCOUR DURING PEAK FLOW EVENTS.
- PEAK FLOWS WERE DETERMINED BASED ON THE MAX. FLOW CAPACITY OF THE UPSTREAM CULVERT (6" DIA.), WHICH WAS DETERMINED TO BE 2 CFS.
- THE RESULTING VELOCITY (2.8 FT/SEC) AND SHEAR STRESS (1.1 LB/FT<sup>2</sup>) WERE USED TO DETERMINE THE APPROPRIATE CHANNEL LINING.
- THE RESULTING DEPTH OF FLOW (<6") RESULTS IN SUFFICIENT FREEBOARD TO PREVENT OVERTOPPING.

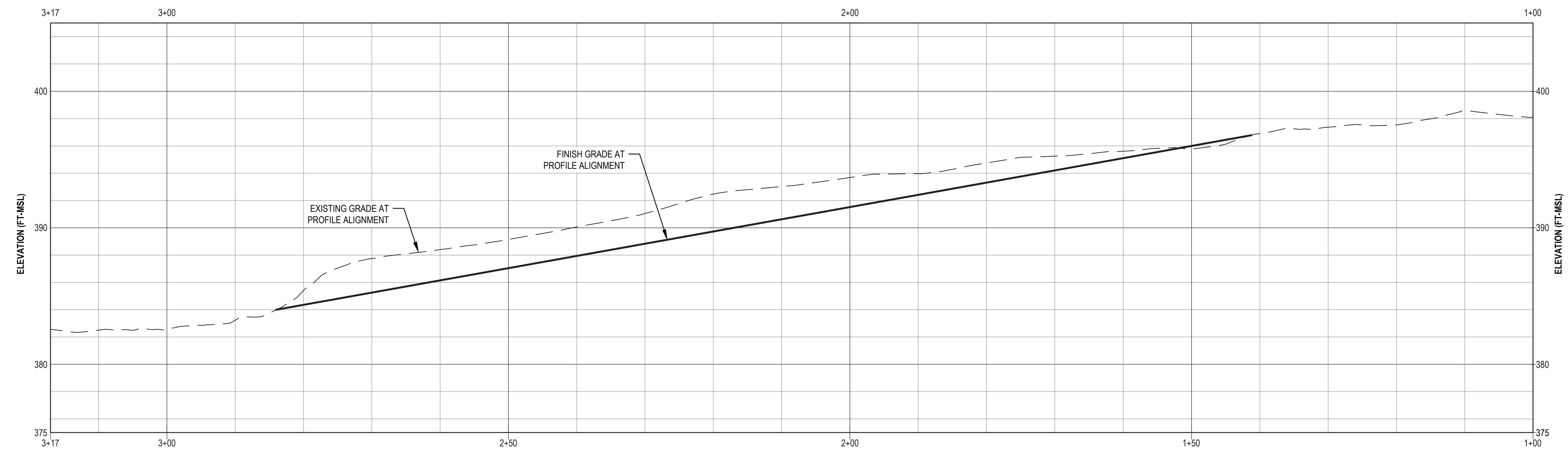
**GENERAL NOTES**

- SEE LP-501 FOR PLANT AND SEED MIX SCHEDULES, DETAILS, AND NOTES.
- PLANT PLUGS AT BOTTOM OF CHANNEL PRIOR TO SEEDING.
- SEED SIDE SLOPE OF CHANNEL PRIOR TO PLACEMENT OF FILTER FABRIC.
- SOIL SHALL BE AMENDED PER SOIL PREPARATION NOTES, DRAWING LP-501.
- DEMARCATÉ PLANTING AND SEEDING ZONE BOUNDARIES IN THE FIELD PRIOR TO PLANTING AND SEEDING OPERATIONS. PLANTING MAY NOT PROCEED UNTIL REVIEW AND APPROVAL.
- PRIOR TO SEEDING, ALL SEEDING AREAS SHALL BE DE-COMPACTED IN ACCORDANCE WITH SOIL BED PREPARATION AND SEEDING NOTES, DRAWING LP-501.
- CONTRACTOR TO PROTECT IN PLACE ALL EXISTING NATIVE TREES AND SHRUBS WITHIN THE RESTORATION AREA AND USE FLAGGING TO IDENTIFY THESE INDIVIDUALS IN THE FIELD.
- PLANTING TO OCCUR AFTER THE FIRST SEASONAL RAINS HAVE SATURATED SOILS BEYOND THE FIRST SEVERAL INCHES (NOVEMBER/DECEMBER) AND BEFORE APRIL.

**KEYNOTES**

- 1 FILL, PLUG, AND COVER EXISTING CULVERT TO ABANDON IN PLACE PER DETAIL 3 ON THIS DRAWING
- 2 BACKFILL EXISTING CHANNEL ADJACENT TO BUILDING FOUNDATION
- 3 LOW SYMBOLIC FENCING (LOGS)

**1 DRAINAGE CHANNEL REROUTE PLAN**  
SCALE 1" = 10'-0"



**2 DRAINAGE CHANNEL REROUTE THALWAG PROFILE**  
SCALE 1" = 10'-0"

**3 CONCRETE PIPE PLUG**  
NOT TO SCALE

**NOTES:**

- PIPE PLUGS SHALL BE INSTALLED TO THE SATISFACTION OF THE ENGINEER.
- SHALL BE INSPECTED BY THE ENGINEER BEFORE COVERING.
- PIPES 4" AND SMALLER MAY BE CAPPED WITHOUT FILLING WITH FLOWABLE FILL.
- EXCAVATE BACK TO EXPOSE 5' LENGTH OF CULVERT. CUT, FILL AND CAP SO THAT FILL MATERIAL DOES NOT ENTER INTO EXISTING STREAM. BACKFILL ABANDONED CULVERT TO PROVIDE A MINIMUM OF 12" COVER OVER CONCRETE PLUG.
- PROTECT CONCRETE PLUG FROM DIRECT CONTACT WITH STREAM.

No.	Issue	Drawn	Approved	Date	Bar is one inch on original size sheet 0 1"			Drawn	L. GOLLER	Designer	L. PIPER	Client <b>MENDOCINO UNIFIED SCHOOL DISTRICT</b>	Project <b>WATER SUPPLY AND STORAGE PROJECT</b>	Title <b>DRAINAGE CHANNEL REROUTE PLAN</b>	Project No. <b>11136611</b>	Original Size <b>ANSI D</b>	Drawing No. <b>LP-101</b>	Sheet <b>1 of 2</b>
								Drafting Check	M. KENNEDY	Design Check	M. KENNEDY							
Reuse of Documents This document and the ideas and designs incorporated herein, as an instrument of professional service, is the property of GHD and shall not be reused in whole or in part for any other project without GHD's written authorization. © 2026 GHD						GHD Inc. 2235 Mercury Way Suite 150 Santa Rosa California 95407 USA T 1 707 523 1010 F 1 707 527 8679 W www.ghd.com		This document shall not be used for construction unless signed and sealed for construction.		Project No. 11136611 Original Size ANSI D Drawing No. LP-101		Sheet 1 of 2						

**SOIL PREPARATION NOTES**

1. SCARIFY ALL DISTURBED AREAS TO A DEPTH OF 3 INCHES. ENSURE THAT THE TOP 3 INCHES OF SOIL IS LOOSE AND FRIABLE WITH NO CLODS LARGER THAN 1 INCH IN DIAMETER.
2. NEXT, APPLY A 2 INCH LAYER OF ORGANIC WEED FREE COMPOST ACROSS THE UPLAND AREA, DRAINAGE CHANNEL SLOPE, AND DRAINAGE CHANNEL BOTTOM AND INCORPORATE THE COMPOST INTO THE TOP 3 INCHES OF THE SOIL. ONCE FULLY INCORPORATED, THE SOIL SHALL BE COMPACTED TO APPROXIMATELY 85% RELATIVE COMPACTION. FINISH GRADES ARE SHOWN ON PLANS AS CONTOUR ELEVATIONS AND SHALL BE MET FOLLOWING INCORPORATION OF COMPOST AND COMPACTION. SEEDING TO FOLLOW.

**SEEDING NOTES**

FOLLOWING SOIL PREPARATION, SEED AND MULCH ACCORDING TO THE FOLLOWING SEQUENCE:

1. BROADCAST SEED IN ALL DISTURBED AREAS AT THE LOCATIONS AND RATES SHOWN ON THIS DRAWING. IN ADDITION TO THE SEED MIX, THE CONTRACTOR SHALL MIX IN MYCORRHIZAL INOCULUM AT A RATE OF 15 LBS PER ACRE.
2. FOLLOWING SEEDING, HYDRO-MULCH (OR SIMILAR) THE ENTIRE SEEDED AREA. HYDRO SLURRY SHALL CONTAIN THE FOLLOWING COMPONENTS AND MINIMUM RATES:
  - 2.1. COMMERCIALY AVAILABLE WEED FREE HYDRO-WOOD FIBER MULCH AT A RATE OF 2,000 LBS / ACRE.
  - 2.2. GREEN DYED CELLULOSE FIBER MULCH AT A RATE OF 500 LBS/ACRE (UNLESS INCLUDED IN WOOD FIBER MULCH)
  - 2.3. ORGANIC TACKIFIER AT 125 LBS/ACRE
  - 2.4. CLEAN WATER (TO CREATE AN ADEQUATE SLURRY FOR HYDRAULIC APPLICATION)
3. INSTALL BIODEGRADABLE EROSION CONTROL BLANKET ON BOTTOM AND SIDE SLOPES OF DRAINAGE CHANNEL PER CALIFORNIA STORMWATER QUALITY ASSOCIATION BEST MANAGEMENT PRACTICE GUIDELINES.
  - 3.1. BIODEGRADABLE EROSION CONTROL BLANKET SHALL BE 30% COCONUT / 70% STRAW MATRIX CONFINED BY A BIODEGRADABLE TOP AND BOTTOM NETTING. THE BLANKET SHALL BE MIN. 0.30 INCHES IN THICKNESS, A SHEAR STRESS MAX PSI OF 1.75, A MINIMUM TENSILE STRENGTH OF 75 PSI AND FUNCTIONAL LONGEVITY OF TWELVE MONTHS.
4. PLANT PLUGS AT THE BOTTOM OF CHANNEL. SEE SCHEDULE ON THIS SHEET FOR SPACING REQUIREMENTS.

**HABITAT TYPE: UPLAND SEED MIX**

AREA: 0.12 AC

BOTANICAL NAME / COMMON NAME	BROADCAST RATES (#LBS. PLS/ACRE)	SEED REQUIRED (#LBS. PLS/ACRE)
ACHILLEA MILLEFOLIUM / COMMON YARROW	1.00	0.10
BROMUS CARINATUS / CALIFORNIA BROME	3.00	0.50
ELYMUS GLAUCUS / BLUE WILD RYE	5.00	0.40
FESTUCA RUBRA / RED FESCUE	1.00	0.10
HORDUM BRACHYANTHERUM SSP. CALIFORNICUM / MEADOW BARLEY	5.00	0.40
IRIS DOUGLASIANA / DOUGLAS IRIS	7.00	0.80
LEYMUS TRITICOIDES / CREEPING WILD RYE	1.00	0.10
OXALIS OREGANA / REDWOOD SORREL	2.00	0.20
SISYRINCHIUM BELLUM / BLUE-EYED GRASS	2.00	0.20
STIPA PULCHRA / PURPLE NEEDLEGRASS	3.00	0.40
<b>TOTAL</b>	<b>35.00</b>	<b>4.20</b>

**HABITAT TYPE: CHANNEL SEED MIX**

AREA: 0.02 AC

BOTANICAL NAME / COMMON NAME	BROADCAST RATES (#LBS. PLS/ACRE)	SEED REQUIRED (#LBS. PLS/ACRE)
CAREX OBNUPTA / SLOUGH SEDGE	1.00	0.05
ELEOCHARIS MACROSTACHYA / COMMON SPIKERUSH	6.00	0.25
JUNCUS PATENS / CALIFORNIA GRAY RUSH	5.00	0.20
SCHOENOPLECTUS AMERICANUS / THREE-SQUARE BULRUSH	2.00	0.10
SCIRPUS MICROCARPUS / SMALL-FRUITED BULRUSH	1.00	0.05
<b>TOTAL</b>	<b>15.00</b>	<b>0.65</b>

**PLANT SCHEDULE**

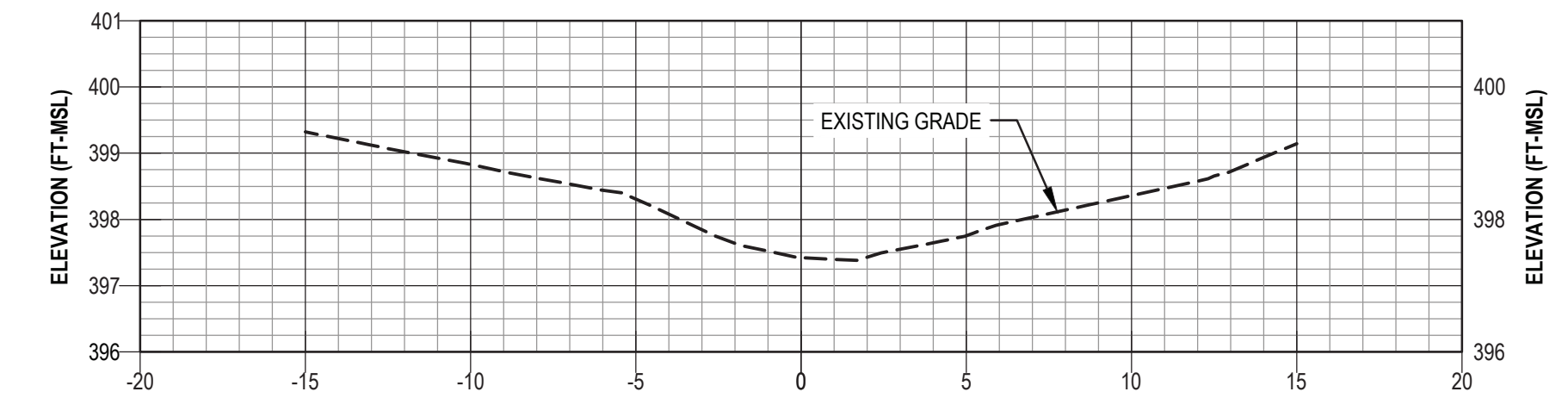
SYMBOL	QTY	BOTANICAL NAME	COMMON NAME	CONT
<b>TREES</b>				
	4	ALNUS RHOMBIFOLIA	WHITE ALDER	TP16
	3	PINUS MURICATA	BISHOP PINE	TP16
<b>SHRUBS</b>				
	2	BERBERIS AQUIFOLIUM	OREGON GRAPE	1 GAL
	4	GAULTHERIA SHALLON	SALAL	1 GAL
	4	MORELLA CALIFORNICA	CALIFORNIA WAX MYRTLE	1 GAL
	8	RIBES SANGUINEUM	RED FLOWERING CURRANT	1 GAL
	7	VACCINIUM OVATUM	EVERGREEN HUCKLEBERRY	1 GAL
	8	VACCINIUM PARVIFOLIUM	RED HUCKLEBERRY	1 GAL

**HABITAT TYPE: CHANNEL BOTTOM PLUG**

AREA: 436 SF

BOTANICAL NAME / COMMON NAME	SPACING	# PLUGS REQUIRED
CAREX OBNUPTA / SLOUGH SEDGE	24" O.C.	115
<b>TOTAL</b>		<b>115</b>

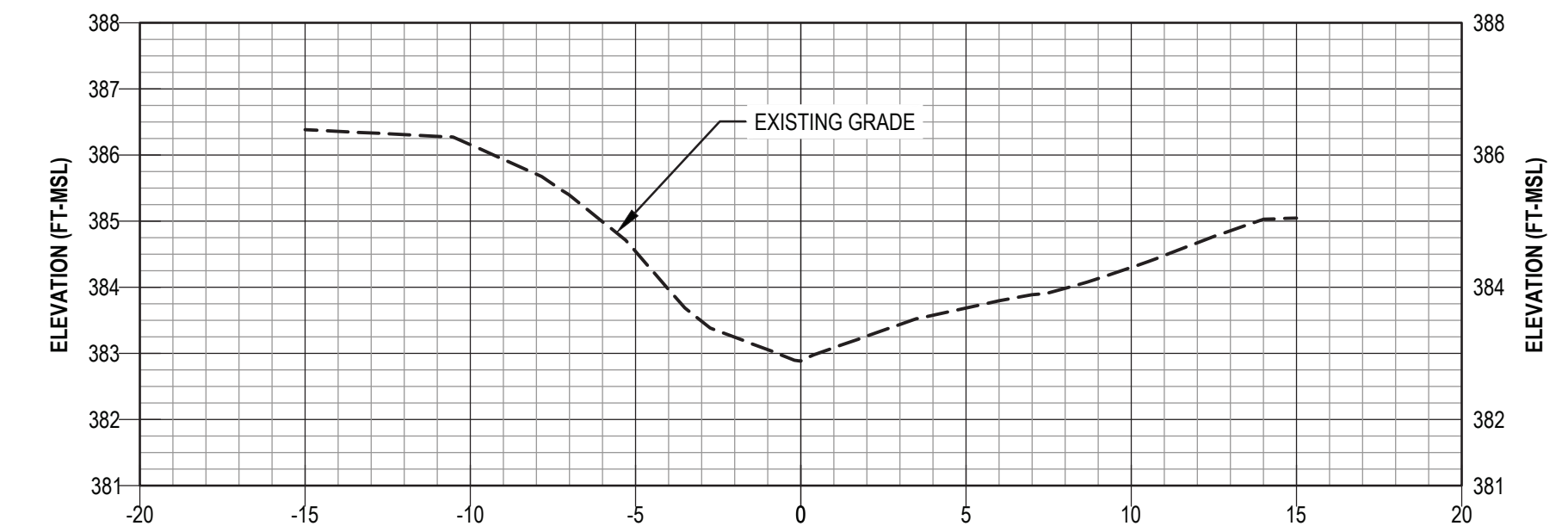
CHANNEL REROUTE THALWEG STATION 1+29



2 EXISTING CROSS SECTION 10' UPSTREAM FROM REROUTE

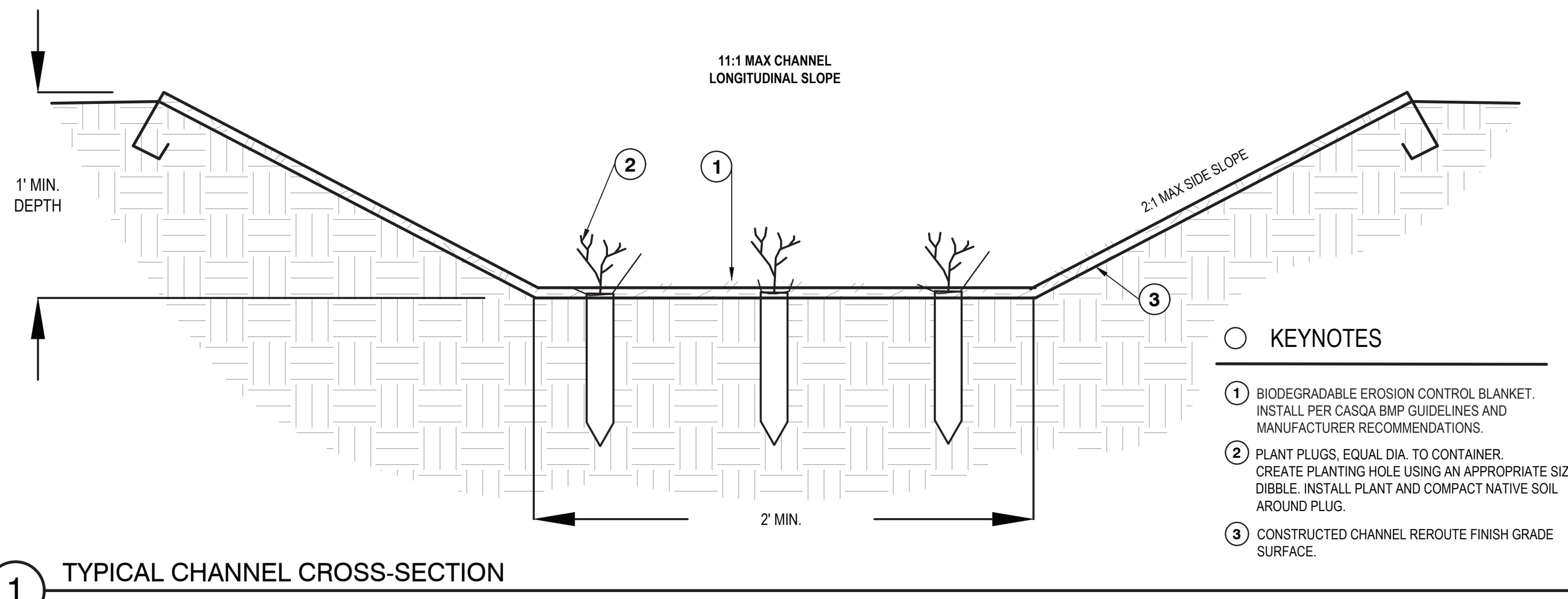
SCALE: HORIZONTAL: 1" = 5' VERTICAL: 1" = 2.5'

CHANNEL REROUTE THALWEG STATION 2+94



3 EXISTING CROSS SECTION 10' DOWNSTREAM FROM REROUTE

SCALE: HORIZONTAL: 1" = 5' VERTICAL: 1" = 2.5'



1 TYPICAL CHANNEL CROSS-SECTION

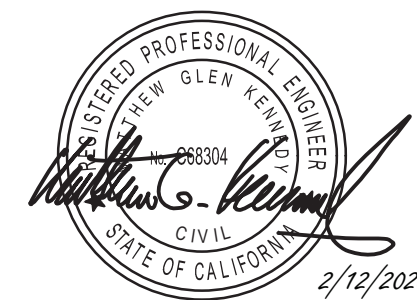
**KEYNOTES**

1. BIODEGRADABLE EROSION CONTROL BLANKET. INSTALL PER CASQA BMP GUIDELINES AND MANUFACTURER RECOMMENDATIONS.
2. PLANT PLUGS, EQUAL DIA. TO CONTAINER. CREATE PLANTING HOLE USING AN APPROPRIATE SIZE DIBBLE. INSTALL PLANT AND COMPACT NATIVE SOIL AROUND PLUG.
3. CONSTRUCTED CHANNEL REROUTE FINISH GRADE SURFACE.

No.	Issue	Drawn	Approved	Date

Bar is one inch on original size sheet  
0 1"

Reuse of Documents  
This document and the ideas and designs incorporated herein, as an instrument of professional service, is the property of GHD and shall not be reused in whole or in part for any other project without GHD's written authorization.  
© 2026 GHD



GHD Inc.  
2235 Mercury Way Suite 150  
Santa Rosa California 95407 USA  
T 1 707 523 1010 F 1 707 527 8679 W www.ghd.com

Drawn	L. GOLLER	Designer	L. PIPER
Drafting Check	M. KENNEDY	Design Check	M. KENNEDY
Project Manager	M. KENNEDY	Date	FEB 2026
This document shall not be used for construction unless signed and sealed for construction.		Scale	SHOWN

Client	MENDOCINO UNIFIED SCHOOL DISTRICT
Project	WATER SUPPLY AND STORAGE PROJECT
Title	DRAINAGE CHANNEL REROUTE DETAILS
Project No.	11136611
Original Size	ANSI D
Drawing No.	LP-501