

May 20, 2025

Lodi Unified School District
880 N. Guild Ave
Lodi, CA 95240

Attn: Amberly Kidder
E: akidder@lodiUSD.net

**Re: Cultural Resources Desktop Review for the Proposed Samuel M. Gantner School
in Lodi, San Joaquin County, California
Terracon Project: NA257017**

Terracon Consultants, Inc. (Terracon) on behalf of Lodi Unified School District (Client) has completed a Cultural Resources Desktop Review for the proposed development of Samuel M. Gantner School in Lodi, California. Terracon was retained by the Client to conduct CEQA Initial Study for construction of a new middle school located within a 12-acre lot at Vine Street and Westgate Drive, Lodi, San Joaquin County, CA 95247 (Parcel No. 027400016). The Project Area Limit (PAL) is approximately the 12-acre parcel (Figure 1).

This Desktop Review was conducted to determine if there are properties listed or eligible for listing on the National Register of Historic Places (NRHP) and California Register of Historical Resources (CRHR) within or near the PAL. This technical memorandum is in compliance with California Environmental Quality Act (CEQA; CA Pub Res Code §21000 et seq.). This work was done under contract to Lodi Unified School District in accordance with Terracon Proposal No. PB247075 dated May 24, 2024.

1.0 Cultural Resources Desktop Review

Terracon conducted a literature review including review of California Historical Resources Information System (CHRIS) confidential site database, National Park Service's (NPS) National Register Information System (NRIS), and historic USGS topographic maps, atlases, and aerial photography. The area examined included the 12-acre project tract and a 0.5-mile search radius. A confidential record search request was made to the CHRIS Central California Information Center (CCIC), at California State University Stanislaus, on May 12, 2025. Terracon received GIS shapefiles for all resources located within the predefined buffer of the project area on May 13, 2025.

Based on the results of the CHRIS CCIC background research, there are no archaeological sites recorded within the PAL and eight resources (P-39-004236-P-39-004243) within the 0.5-mile



search radius (Table 1). CHRIS also indicated that there are five prior cultural surveys within the 0.5-mile search radius (Table 2). One of these reports (Jones and Matzen. 2006) encompassed the entirety of the PAL (Figure 2). Jones and Matzen (2006) conducted a pedestrian survey consisting of 15 meter transects; no cultural resources or material were observed within the PAL.

Table 1. Previously Recorded Cultural Resources within 0.5-miles of the Project Area

| Resource ID | Description | NRHP Eligibility |
|----------------------|---|--|
| Primary: P-39-004236 | Woodbridge Irrigation Canal; South Main Canal | 6Y Determined ineligible for listing in the National Register through a consensus determination of a federal agency and the State Historic Preservation Officer. |
| Primary: P-39-004237 | 15417 North Lower Sacramento Rd | 6Y Determined ineligible for listing in the National Register through a consensus determination of a federal agency and the State Historic Preservation Officer. |
| Primary: P-39-004238 | 15431 North Lower Sacramento Rd., | 6Y Determined ineligible for listing in the National Register through a consensus determination of a federal agency and the State Historic Preservation Officer. |
| Primary: P-39-004239 | 15475 North Lower Sacramento Rd. | 6Y Determined ineligible for listing in the National Register through a consensus determination of a federal agency and the State Historic Preservation Officer. |
| Primary: P-39-004240 | 15485 North Lower Sacramento Rd. | 6Y Determined ineligible for listing in the National Register through a consensus determination of a federal agency and the State Historic Preservation Officer. |
| Primary: P-39-004241 | 15551 North Lower Sacramento Rd. | 6Y Determined ineligible for listing in the National Register through a consensus determination of a federal agency and the State Historic Preservation Officer. |
| Primary: P-39-004242 | 15567 & 15581 North Lower Sacramento Rd. | 6Y Determined ineligible for listing in the National Register through a consensus determination of a federal agency and the State Historic Preservation Officer. |
| Primary: P-39-004243 | 15671 North Lower Sacramento Rd. | 6Y Determined ineligible for listing in the National Register through a consensus determination of a federal agency and the State Historic Preservation Officer. |



Table 2. Previous Cultural Resources Surveys within 0.5-miles of the Project Area

| Report Number | Author | Title | Year |
|-----------------|--|---|-------------|
| SJ-04309 | Bowen, Mike | Department of Transportation Historic Property Survey Report, 10-SJO-Lower Sacramento Road Widening Project, Between Kettleman Lane and Turner Road. | 2000 |
| SJ-06097 | Jones, E. T. and B. Matzen | A Cultural and Paleontological Resources Study for the Westside and Southwest Gateway Projects, Lodi, San Joaquin County, California | 2006 |
| SJ-06546 | Jones & Stokes | Cultural Resources Sensitivity Assessment for Five Alternative Water Treatment Plant Sites and Associated Pipeline Routes, City of Lodi, San Joaquin County, California | 2007 |
| SJ-06911 | Environmental Science Associates, Inc. (ESA) | City of Lodi General Plan Update, Cultural Resources Section. | 2010 |
| SJ-09173 | Patrick GIS Group, Inc. | Cultural Resources Study for the Bank of Stockton Proposed Branch Office Project, 15671 N. Lower Sacramento Road, Lodi, California (APN 027-050-22) | 2019 |

Bold indicates survey intersects the PAL

Terracon reviewed the Bureau of Land Management General Land Office Records from 1865. The original survey in 1865 notes two fences and a road south of the PAL. Historic USGS topographical maps between 1894 and 1968 shows that the project parcel is located west of Lodi, adjacent, south and west of a canal. The PAL was never developed and aerial imagery, between 1957 and 2022, confirms the PAL was used as an agricultural field.

2.0 Conclusions

While it is not possible for a Desktop Review to definitively determine whether cultural resources may be present within a particular area, based on a review of historic maps and aerial photographs, the site has a low probability for containing archaeological sites. The PAL was previously surveyed in 2006 as part of a larger project by Jones and Matzen. No cultural resources or material was observed within the PAL. Eight historic resources were located within 0.5 miles of the PAL; these resources were determined ineligible for listing in the NHRP and CRHR. Terracon recommends no further cultural resources surveys for this project.

If human remains are encountered during activities associated with the proposed project, State Health and Safety Code Section 7050.5 states that no further disturbance shall occur until the County Coroner has made a determination of origin and disposition pursuant to Public Resources Code Section 5097.98. The County Coroner must be notified of the find immediately. If the remains are determined to be prehistoric, the Coroner will notify the Native American Heritage Commission (NAHC), which will determine and notify a Most Likely Descendant (MLD). With the permission of the landowner or his/her authorized representative, the MLD may inspect the site of the discovery. The MLD shall complete the inspection within 48 hours of notification by the NAHC.



3.0 Closing

Terracon appreciates the opportunity to provide you this report. If you have any questions, please contact Kelly Higelmire at (513) 612-9035.

Sincerely,
Terracon Consultants, Inc

A handwritten signature in black ink, appearing to read "K. Higelmire".

Kelly Higelmire, M.A.
Senior Archaeologist

A handwritten signature in black ink, appearing to read "Hunter Watkins".

Hunter Watkins
Project Manager

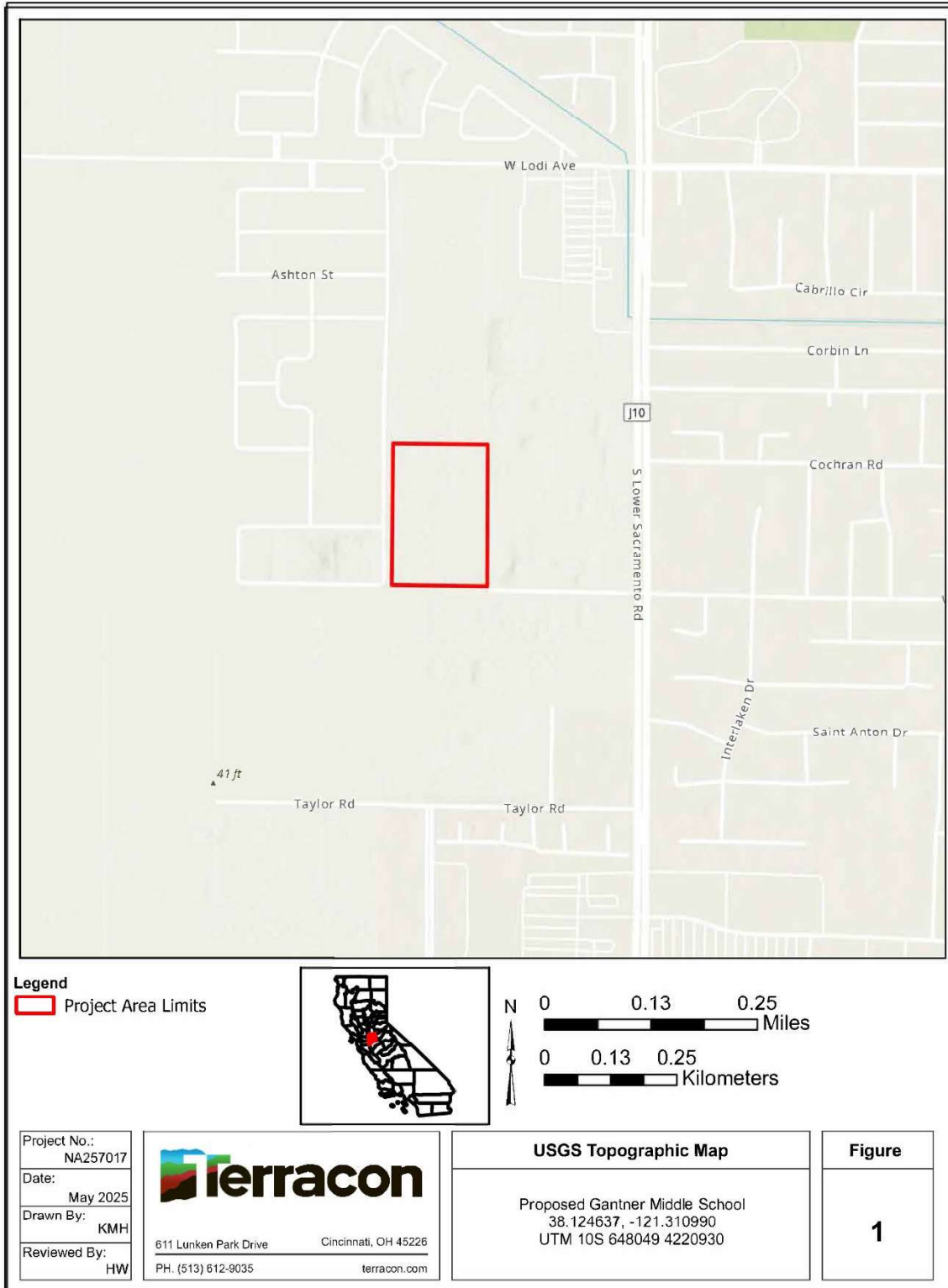


Figure 1. Project Area Limits

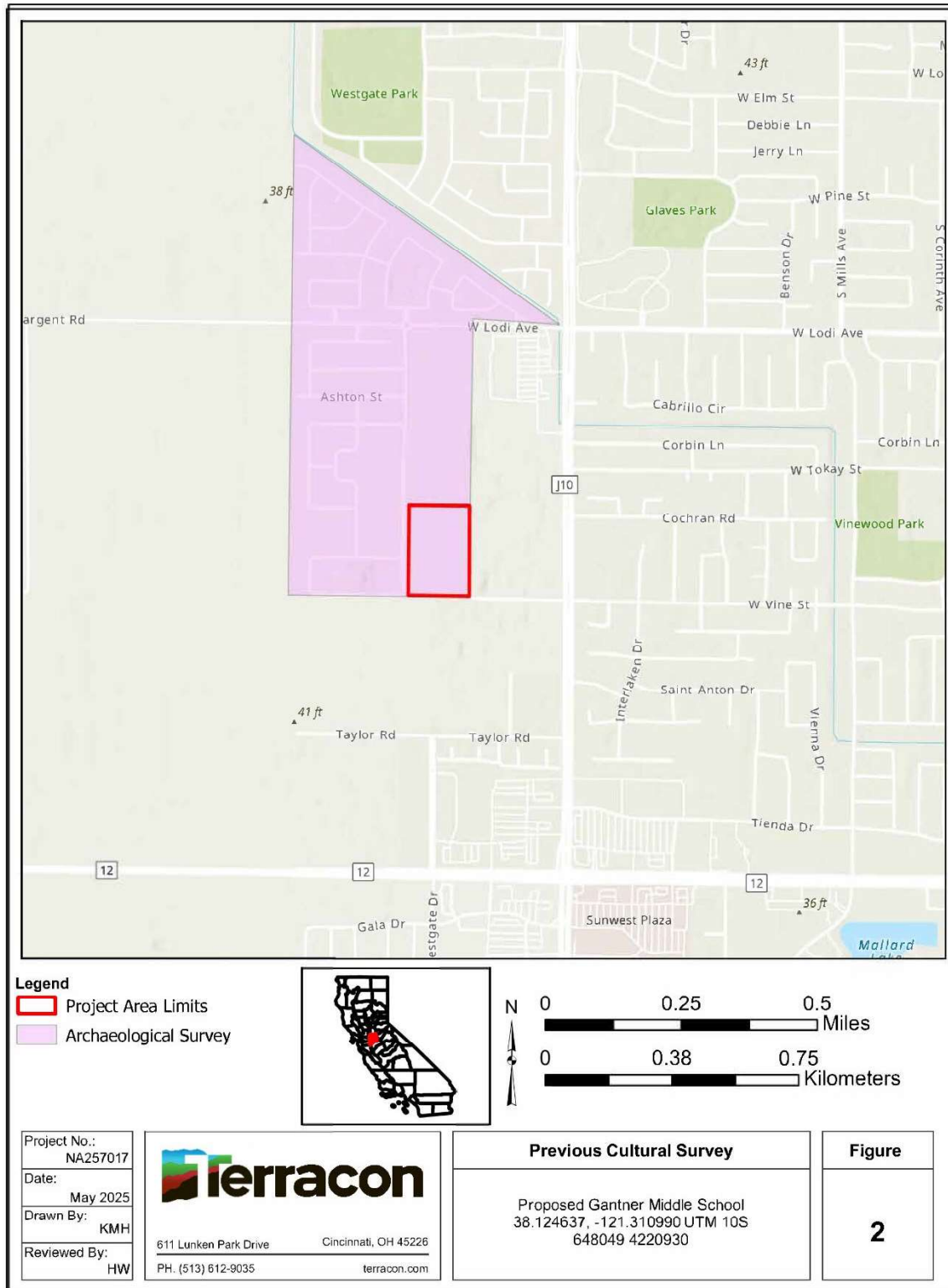


Figure 2. Previous Cultural Survey